

Data Path : Z:\VOASRV\HPCHEM1\MSVOA U\DATA\VU101620\
 Data File : VU040748.D
 Acq On : 16 Oct 2020 14:47
 Operator : SY/MD
 Sample : L4419-12
 Misc : 25.0mL/MSVOA U/WATER
 ALS Vial : 13 Sample Multiplier: 1

Instrument :
 MSVOA_U
 ClientSampleId :
 C0AJ1

Integration Parameters: rteint.p
 Integrator: RTE
 Smoothing : ON
 Sampling : 1
 Start Thrs: 0.1
 Stop Thrs : 0

Filtering: 5
 Min Area: 3 % of largest Peak
 Max Peaks: 100
 Peak Location: TOP

If leading or trailing edge < 100 prefer < Baseline drop else tangent >
 Peak separation: 5

Method : Z:\VOASRV\HPCHEM1\MSVOA_U\METHOD\SOMUTR100820WMA.M
 Title : TRACE VOA SOM01.0

Signal : TIC

peak #	R.T. min	first scan	max scan	last scan	PK TY	peak height	corr. area	corr. % max.	% of total
1	1.604	75	82	91	rBV	61993	67463	10.48%	1.435%
2	1.922	172	181	193	rVB	54978	70712	10.98%	1.504%
3	2.584	373	387	406	rBV4	135196	259298	40.26%	5.515%
4	3.192	572	576	596	rVB7	2873	7165	1.11%	0.152%
5	4.665	1016	1034	1068	rBV	71443	289814	45.00%	6.164%
6	5.083	1148	1164	1188	rVB2	102120	239070	37.12%	5.085%
7	5.330	1231	1241	1256	rVB6	2776	6714	1.04%	0.143%
8	5.539	1296	1306	1318	rVB3	3899	8590	1.33%	0.183%
9	5.742	1347	1369	1386	rBV3	188726	498081	77.34%	10.594%
10	6.263	1517	1531	1554	rBV	150177	282701	43.90%	6.013%
11	6.555	1609	1622	1639	rBV2	110159	208857	32.43%	4.442%
12	6.703	1653	1668	1687	rBV	127392	248424	38.57%	5.284%
13	7.574	1926	1939	1956	rBV2	55754	94932	14.74%	2.019%
14	7.906	2029	2042	2064	rBV	200905	348172	54.06%	7.405%
15	8.185	2115	2129	2149	rBV2	36702	63888	9.92%	1.359%
16	8.558	2233	2245	2258	rBV	115463	190668	29.61%	4.055%
17	8.642	2258	2271	2312	rVB	324135	644013	100.00%	13.697%
18	9.420	2500	2513	2542	rVB	223757	374217	58.11%	7.959%
19	10.754	2916	2928	2946	rBV	101358	163375	25.37%	3.475%
20	11.809	3244	3256	3270	rBV	190130	305647	47.46%	6.501%
21	12.188	3361	3374	3392	rBV	203409	329953	51.23%	7.018%

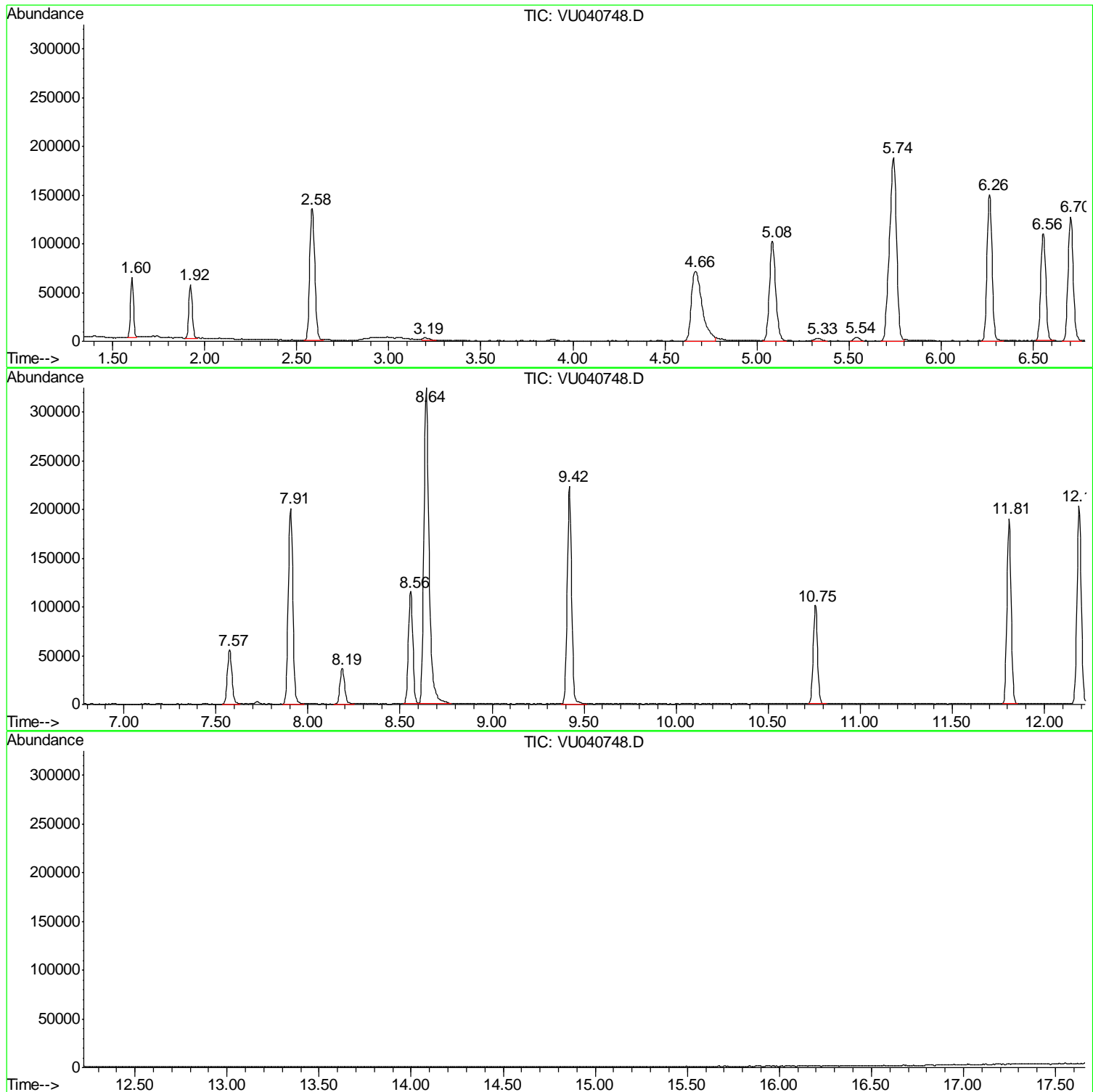
Sum of corrected areas: 4701754

Data Path : Z:\VOASRV\HPCHEM1\MSVOA U\DATA\VU101620\
Data File : VU040748.D
Acq On : 16 Oct 2020 14:47
Operator : SY/MD
Sample : L4419-12
Misc : 25.0mL/MSVOA U/WATER
ALS Vial : 13 Sample Multiplier: 1

Instrument :
MSVOA_U
ClientSampled :
C0AJ1

Quant Method : Z:\VOASRV\HPCHEM1\MSVOA_U\METHOD\SOMUTR100820WMA.M
Quant Title : TRACE VOA SOM01.0

TIC Library : C:\DATABASE\NIST11.L
TIC Integration Parameters: LSCINT.P



Data Path : Z:\VOASRV\HPCHEM1\MSVOA_U\DATA\VU101620\
Data File : VU040748.D
Acq On : 16 Oct 2020 14:47
Operator : SY/MD
Sample : L4419-12
Misc : 25.0mL/MSVOA_U/WATER
ALS Vial : 13 Sample Multiplier: 1

Instrument :
MSVOA_U
ClientSampleId :
C0AJ1

Quant Method : Z:\VOASRV\HPCHEM1\MSVOA_U\METHOD\SOMUTR100820WMA.M
Quant Title : TRACE VOA SOM01.0

TIC Library : C:\DATABASE\NIST11.L
TIC Integration Parameters: LSCINT.P

No Library Search Compounds Detected

Data Path : Z:\VOASRV\HPCHEM1\MSVOA_U\DATA\VU101620\
Data File : VU040748.D
Acq On : 16 Oct 2020 14:47
Operator : SY/MD
Sample : L4419-12
Misc : 25.0mL/MSVOA_U/WATER
ALS Vial : 13 Sample Multiplier: 1

Instrument :
MSVOA_U
ClientSampleId :
C0AJ1

Quant Method : Z:\VOASRV\HPCHEM1\MSVOA_U\METHOD\SOMUTR100820WMA.M
Quant Title : TRACE VOA SOM01.0

TIC Library : C:\DATABASE\NIST11.L
TIC Integration Parameters: LSCINT.P

TIC Top Hit name	RT	EstConc	Units	Response	--Internal Standard--			
					#	RT	Resp	Conc
