

Data Path : Z:\VOASRV\HPCHEM1\MSVOA\_U\DATA\VU101718\  
 Data File : VU027677.D  
 Acq On : 17 Oct 2018 14:46  
 Operator : MD/SY  
 Sample : J5463-04 200X  
 Misc : 25.0mL/MSVOA\_U/WATER  
 ALS Vial : 15 Sample Multiplier: 1

Instrument :  
 MSVOA\_U  
 ClientSampled :  
 C0JB5

Quant Time: Oct 19 06:49:19 2018  
 Quant Method : Z:\VOASRV\HPCHEM1\MSVOA\_U\METHOD\SOMUTR101718WMA.M  
 Quant Title : TRACE VOA SOM01.0  
 QLast Update : Fri Oct 19 06:41:15 2018  
 Response via : Initial Calibration

Internal Standards	R.T.	QIon	Response	Conc	Units	Dev(Min)
1) 1,4-Difluorobenzene	5.89	114	80241	5.00	ug/L	0.00
28) Chlorobenzene-d5	9.09	117	74908	5.00	ug/L	0.00
60) 1,4-Dichlorobenzene-d4	11.48	152	37466	5.00	ug/L	0.00

## System Monitoring Compounds

4) Vinyl Chloride-d3	1.40	65	29761	4.67	ug/L	0.00
Spiked Amount	5.000	Range	40 - 130	Recovery	=	93.40%
7) Chloroethane-d5	1.68	69	23760	4.95	ug/L	0.00
Spiked Amount	5.000	Range	65 - 130	Recovery	=	99.00%
11) 1,1-Dichloroethene-d2	2.28	63	41812	3.69	ug/L	0.00
Spiked Amount	5.000	Range	60 - 125	Recovery	=	73.80%
20) 2-Butanone-d5	4.21	46	88996	49.08	ug/L	-0.02
Spiked Amount	50.000	Range	40 - 130	Recovery	=	98.16%
24) Chloroform-d	4.65	84	50507	5.08	ug/L	0.00
Spiked Amount	5.000	Range	70 - 125	Recovery	=	101.60%
26) 1,2-Dichloroethane-d4	5.31	65	28613	5.13	ug/L	0.00
Spiked Amount	5.000	Range	70 - 130	Recovery	=	102.60%
32) Benzene-d6	5.34	84	106379	5.21	ug/L	0.00
Spiked Amount	5.000	Range	70 - 125	Recovery	=	104.20%
36) 1,2-Dichloropropane-d6	6.33	67	37647	5.29	ug/L	0.00
Spiked Amount	5.000	Range	60 - 140	Recovery	=	105.80%
41) Toluene-d8	7.57	98	103229	5.23	ug/L	0.00
Spiked Amount	5.000	Range	70 - 130	Recovery	=	104.60%
43) trans-1,3-Dichloropropene-	7.85	79	14826	4.72	ug/L	0.00
Spiked Amount	5.000	Range	55 - 130	Recovery	=	94.40%
46) 2-Hexanone-d5	8.32	63	79764	51.83	ug/L	0.00
Spiked Amount	50.000	Range	45 - 130	Recovery	=	103.66%
57) 1,1,2,2-Tetrachloroethane-	10.43	84	27262	4.91	ug/L	0.00
Spiked Amount	5.000	Range	65 - 120	Recovery	=	98.20%
64) 1,2-Dichlorobenzene-d4	11.86	152	36813	5.24	ug/L	0.00
Spiked Amount	5.000	Range	80 - 120	Recovery	=	104.80%

## Target Compounds

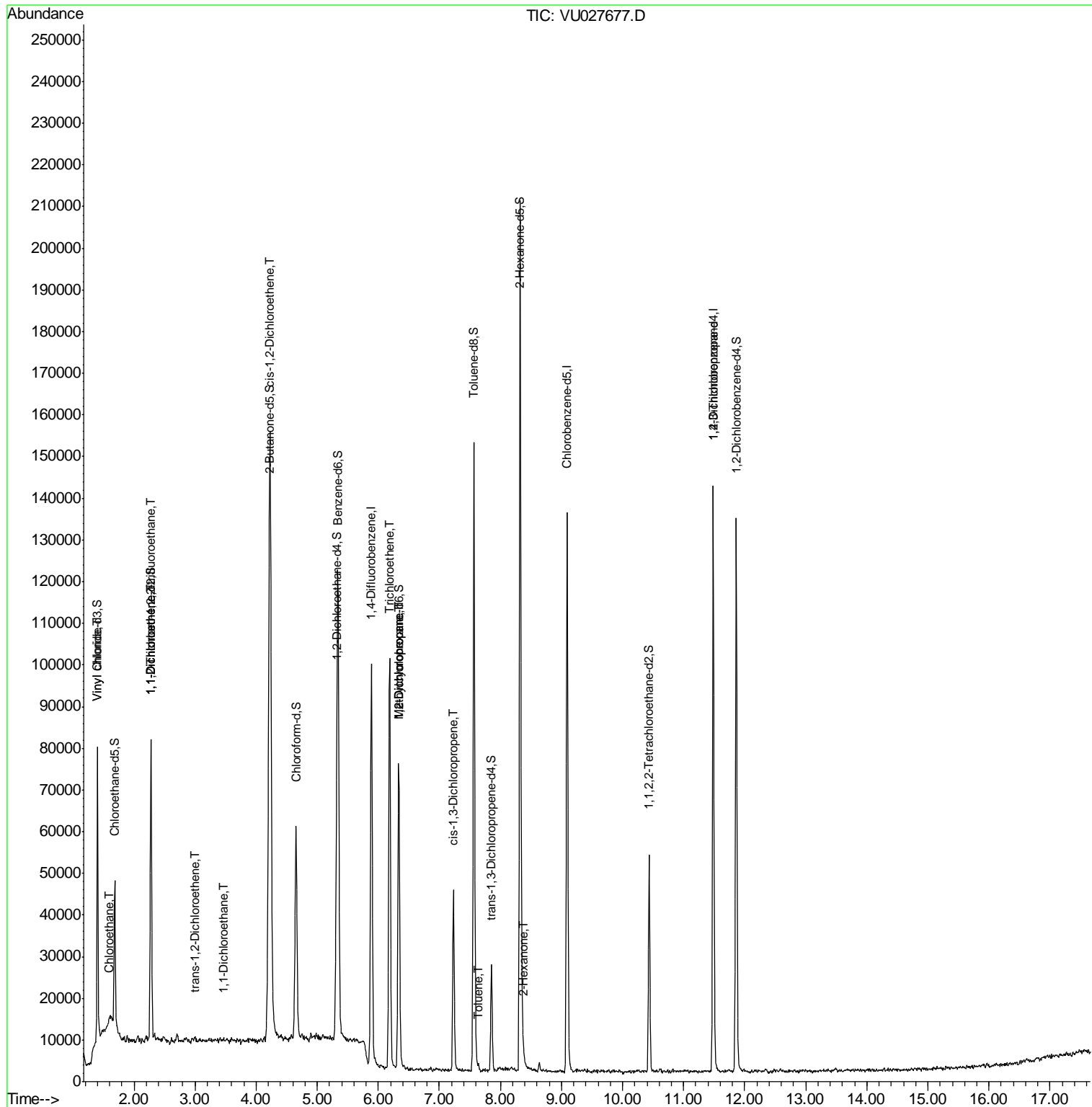
Target Compounds	R.T.	QIon	Response	Conc	Units	Qvalue
5) Vinyl chloride	1.41	62	19974	2.551	ug/L	84
8) Chloroethane	1.59	64	2812	0.623	ug/L #	53
10) 1,1,2-Trichloro-1,2,2-trif	2.28	101	370	0.068	ug/L #	29
12) 1,1-Dichloroethene	2.29	96	735	0.135	ug/L #	1
18) trans-1,2-Dichloroethene	2.99	96	445	0.077	ug/L #	52
19) 1,1-Dichloroethane	3.47	63	353	0.031	ug/L #	1
22) cis-1,2-Dichloroethene	4.23	96	68385	10.703	ug/L #	94
34) Trichloroethene	6.19	95	35534	5.600	ug/L	98
35) Methylcyclohexane	6.34	83	8475	0.775	ug/L #	18
37) 1,2-Dichloropropane	6.33	63	3715	0.528	ug/L #	89
39) cis-1,3-Dichloropropene	7.23	75	890	0.087	ug/L #	13
42) Toluene	7.64	91	805	0.031	ug/L	92
48) 2-Hexanone	8.38	43	1655	0.486	ug/L #	83
59) 1,2,3-Trichloropropane	11.48	75	4500	1.112	ug/L	93

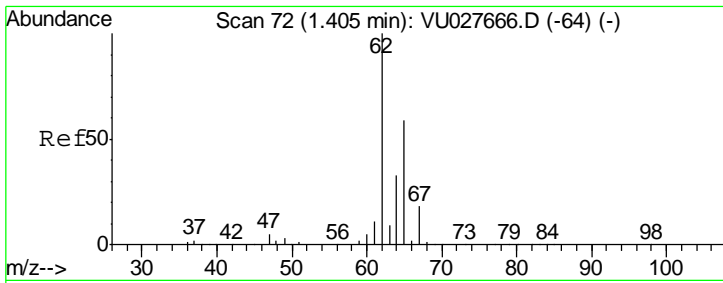
(#) = qualifier out of range (m) = manual integration (+) = signals summed

Data Path : Z:\VOASRV\HPCHEM1\MSVOA\_U\DATA\VU101718\  
 Data File : VU027677.D  
 Acq On : 17 Oct 2018 14:46  
 Operator : MD/SY  
 Sample : J5463-04 200X  
 Misc : 25.0mL/MSVOA\_U/WATER  
 ALS Vial : 15 Sample Multiplier: 1

Instrument :  
 MSVOA\_U  
 ClientSampled :  
 C0JB5

Quant Time: Oct 19 06:49:19 2018  
 Quant Method : Z:\VOASRV\HPCHEM1\MSVOA\_U\METHOD\SOMUTR101718WMA.M  
 Quant Title : TRACE VOA SOM01.0  
 QLast Update : Fri Oct 19 06:41:15 2018  
 Response via : Initial Calibration

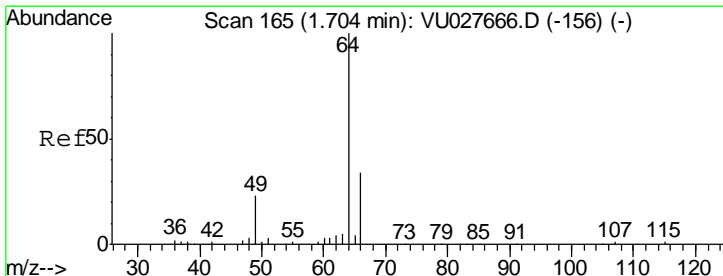
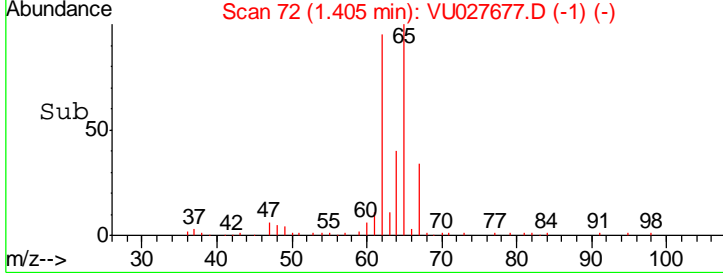
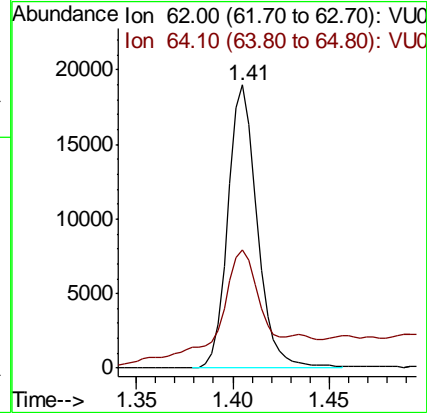
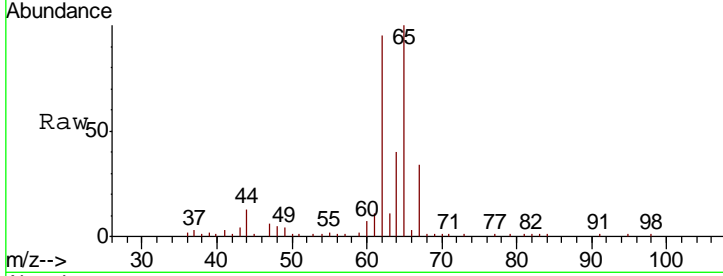




#5  
 Vinyl chloride  
 Concen: 2.551 ug/L  
 RT: 1.41 min Scan# 72  
 Delta R.T. 0.00 min  
 Lab File: VU027677.D  
 Acq: 17 Oct 2018 14:46

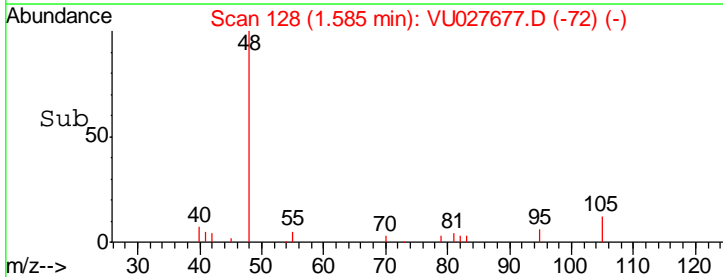
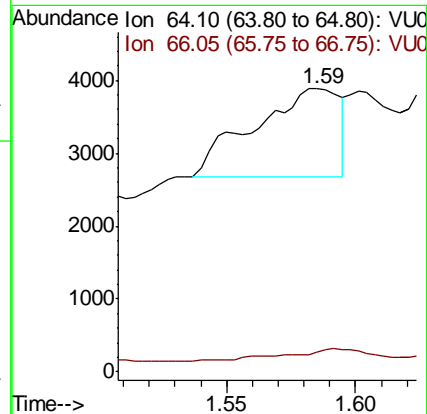
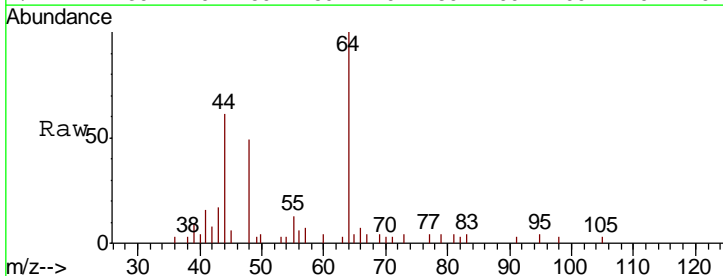
Instrument : MSVOA\_U  
 ClientSampled : C0JB5

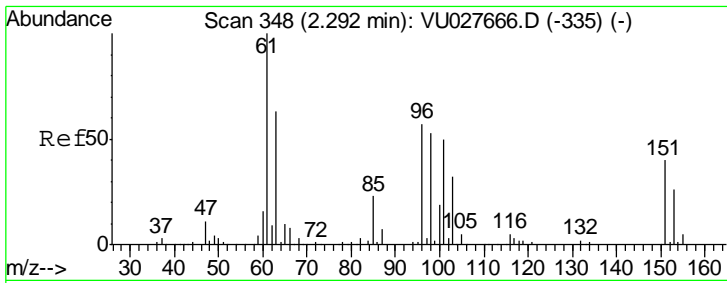
Tgt Ion: 62 Resp: 19974  
 Ion Ratio Lower Upper  
 62 100  
 64 41.9 22.9 42.5



#8  
 Chloroethane  
 Concen: 0.623 ug/L  
 RT: 1.59 min Scan# 128  
 Delta R.T. -0.12 min  
 Lab File: VU027677.D  
 Acq: 17 Oct 2018 14:46

Tgt Ion: 64 Resp: 2812  
 Ion Ratio Lower Upper  
 64 100  
 66 6.8 23.5 43.7#





#10

1,1,2-Trichloro-1,2,2-trifluoroethane

Concen: 0.068 ug/L

RT: 2.28 min Scan# 343

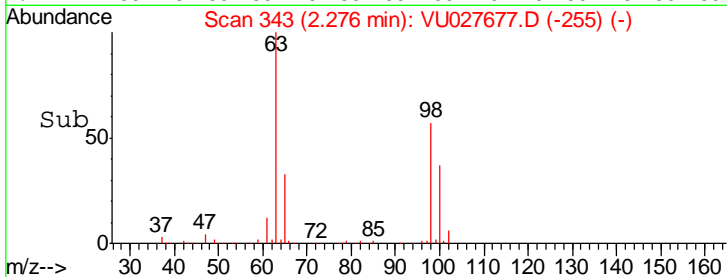
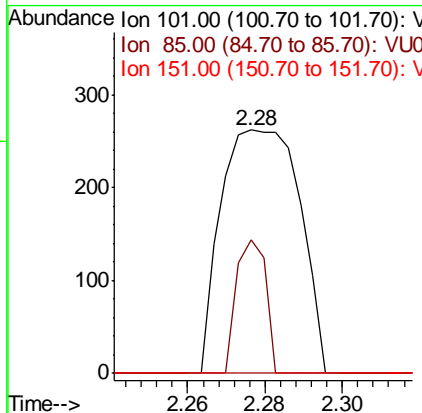
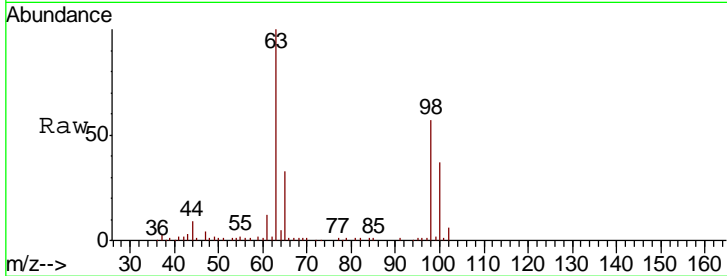
Delta R.T. -0.02 min

Lab File: VU027677.D

Acq: 17 Oct 2018 14:46

Instrument :  
MSVOA\_U  
ClientSampled :  
C0JB5

Tgt Ion	Resp	Lower	Upper
101	370		
101	100		
85	20.3	35.6	53.4#
151	0.0	63.8	95.6#



#12

1,1-Dichloroethene

Concen: 0.135 ug/L

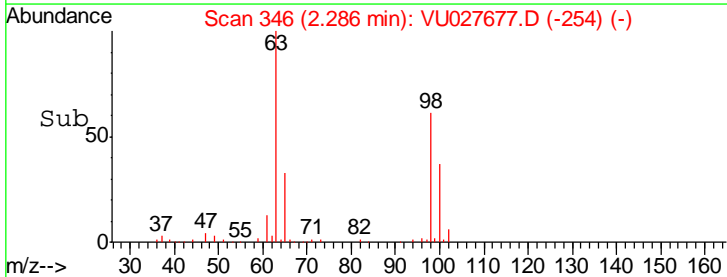
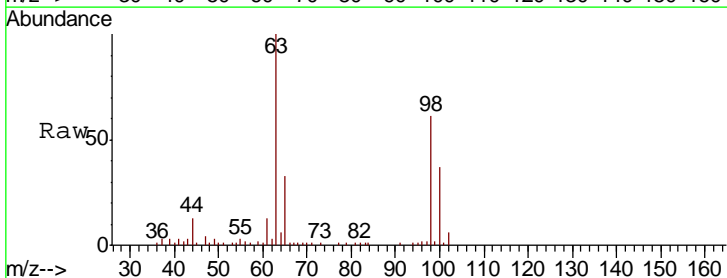
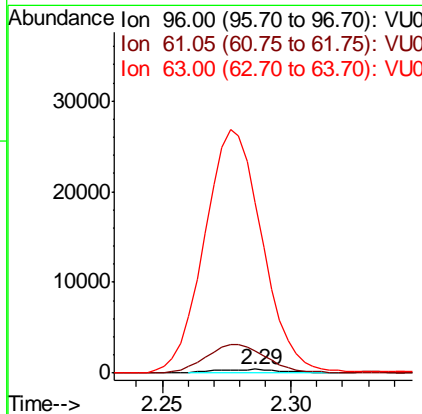
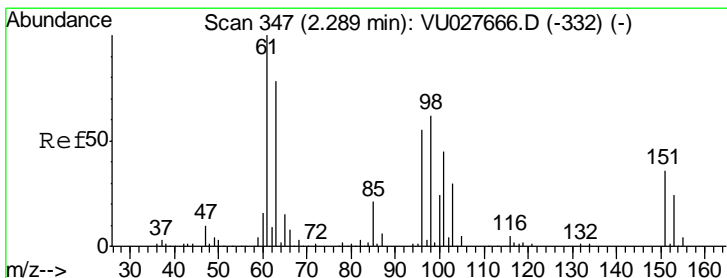
RT: 2.29 min Scan# 346

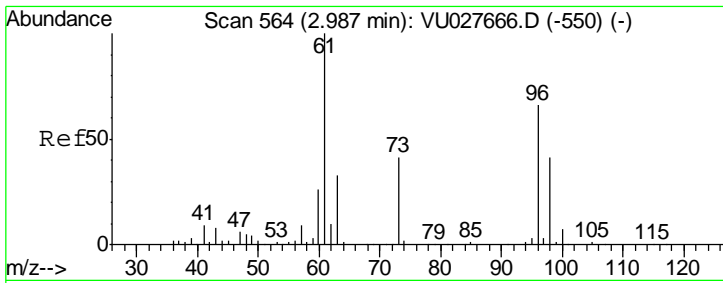
Delta R.T. -0.00 min

Lab File: VU027677.D

Acq: 17 Oct 2018 14:46

Tgt Ion	Resp	Lower	Upper
96	735		
96	100		
61	589.4	125.6	233.2#
63	4526.9	97.6	181.2#

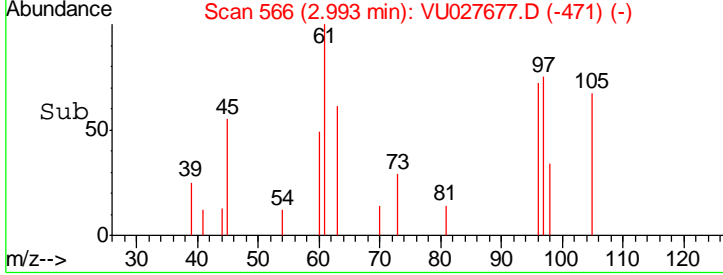
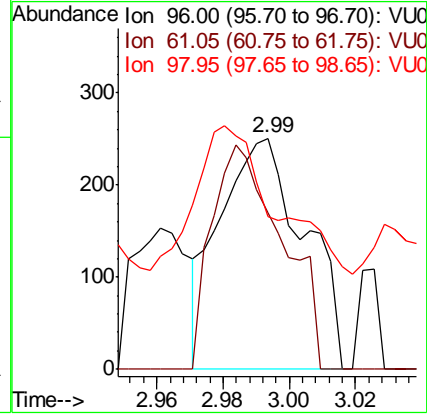
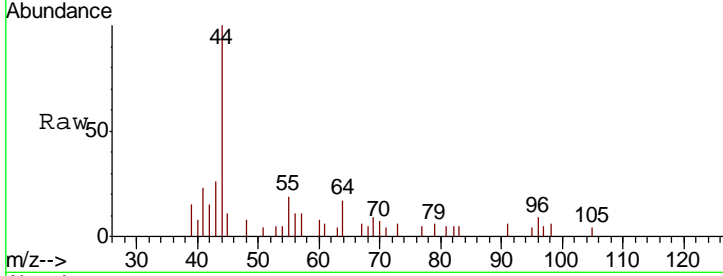




#18  
 trans-1,2-Dichloroethene  
 Concen: 0.077 ug/L  
 RT: 2.99 min Scan# 566  
 Delta R.T. 0.01 min  
 Lab File: VU027677.D  
 Acq: 17 Oct 2018 14:46

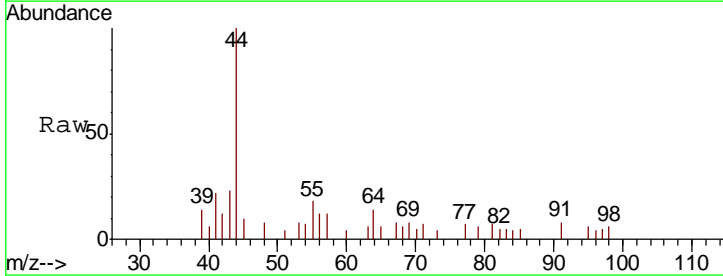
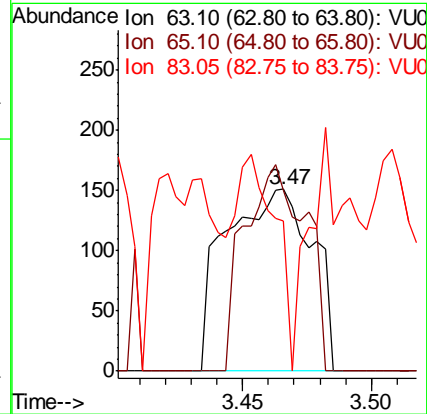
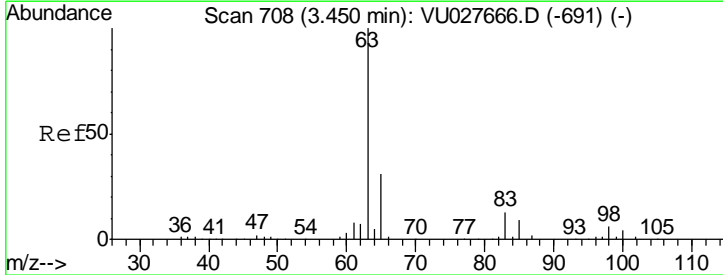
Instrument : MSVOA\_U  
 ClientSampled : C0JB5

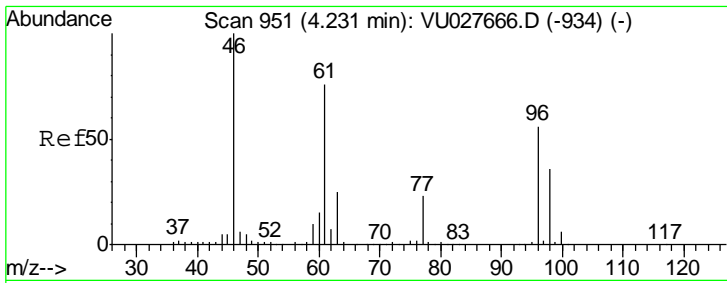
Tgt Ion	Resp	Lower	Upper
96	100		
61	67.7	105.8	196.4#
98	66.1	43.6	81.0



#19  
 1,1-Dichloroethane  
 Concen: 0.031 ug/L  
 RT: 3.47 min Scan# 713  
 Delta R.T. 0.02 min  
 Lab File: VU027677.D  
 Acq: 17 Oct 2018 14:46

Tgt Ion	Resp	Lower	Upper
63	100		
65	99.3	22.3	41.3#
83	82.8	9.7	17.9#

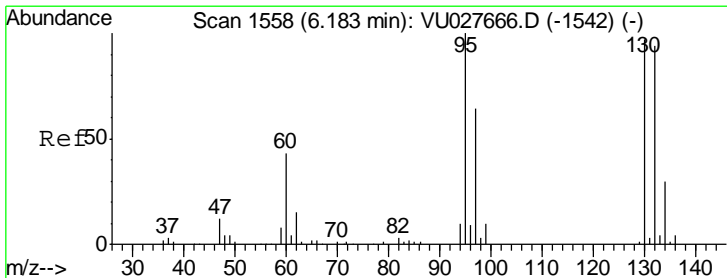
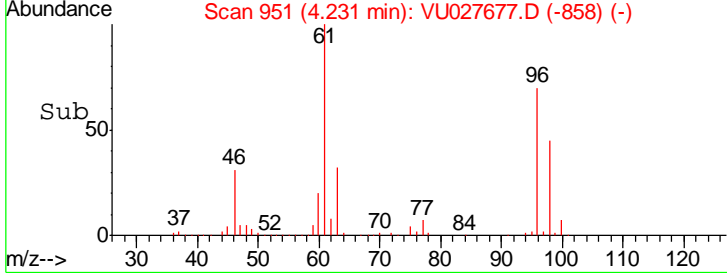
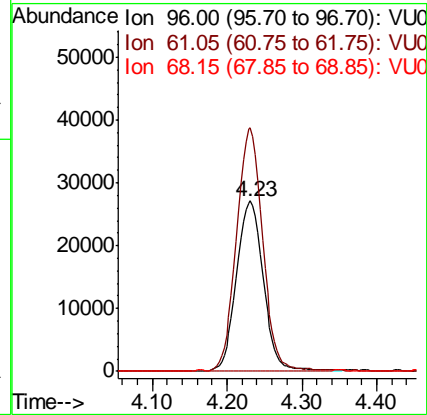
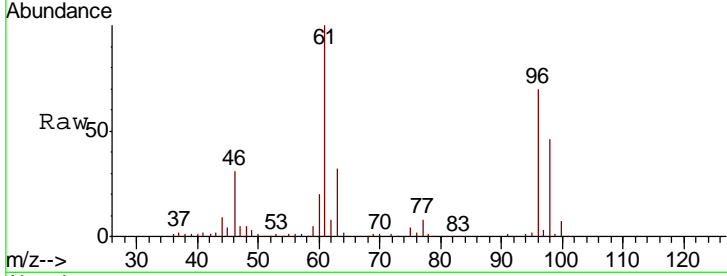




#22  
 cis-1,2-Dichloroethene  
 Concen: 10.703 ug/L  
 RT: 4.23 min Scan# 951  
 Delta R.T. 0.00 min  
 Lab File: VU027677.D  
 Acq: 17 Oct 2018 14:46

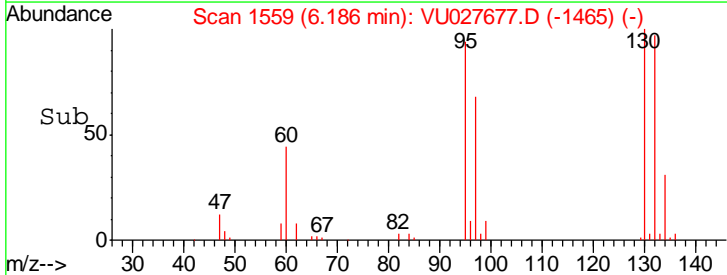
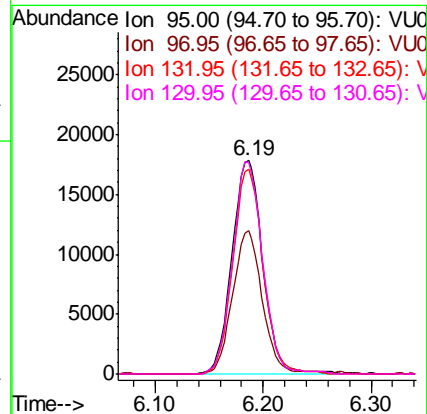
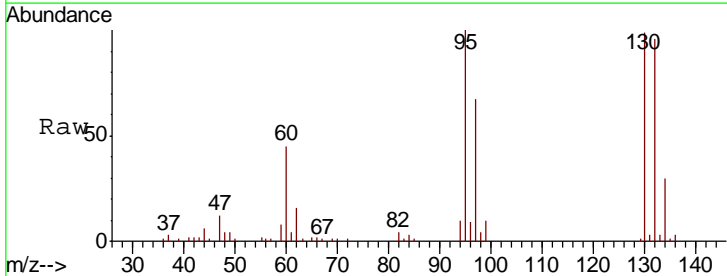
Instrument :  
 MSVOA\_U  
 ClientSampled :  
 C0JB5

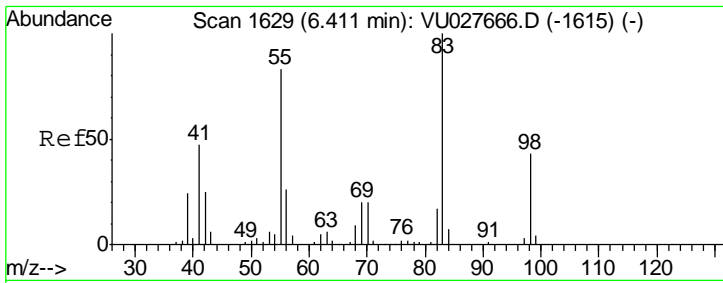
Tgt Ion	Resp	Lower	Upper
96	68385		
61	143.0	95.3	176.9
68	0.6	1.1	2.1#



#34  
 Trichloroethene  
 Concen: 5.600 ug/L  
 RT: 6.19 min Scan# 1559  
 Delta R.T. 0.00 min  
 Lab File: VU027677.D  
 Acq: 17 Oct 2018 14:46

Tgt Ion	Resp	Lower	Upper
95	35534		
97	67.1	44.7	83.1
132	95.7	65.9	122.5
130	99.0	67.9	126.1

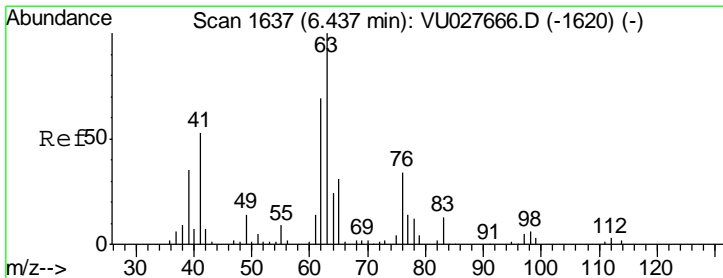
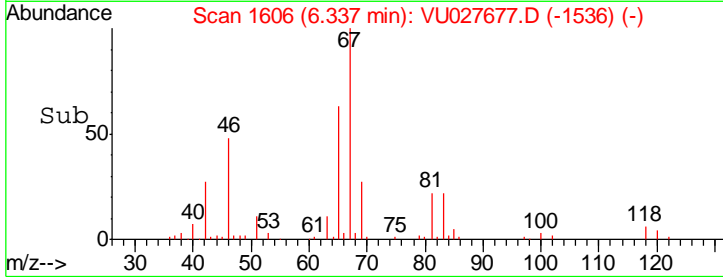
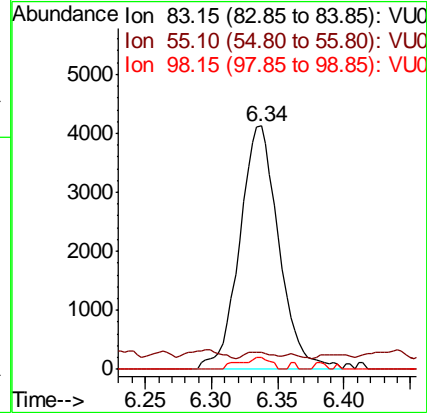
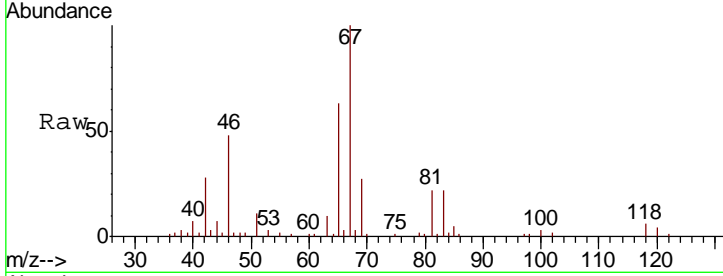




#35  
 Methylcyclohexane  
 Concen: 0.775 ug/L  
 RT: 6.34 min Scan# 1606  
 Delta R.T. -0.07 min  
 Lab File: VU027677.D  
 Acq: 17 Oct 2018 14:46

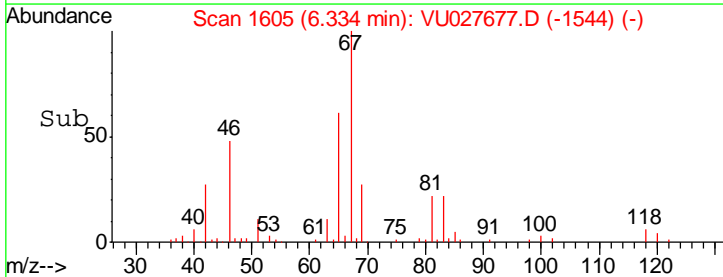
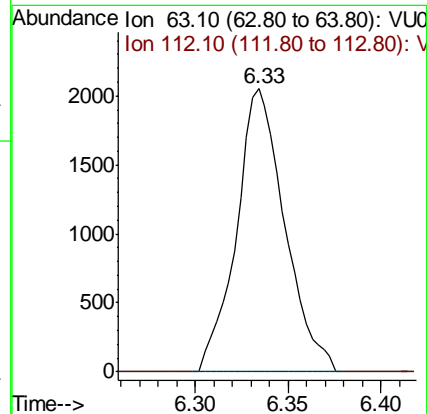
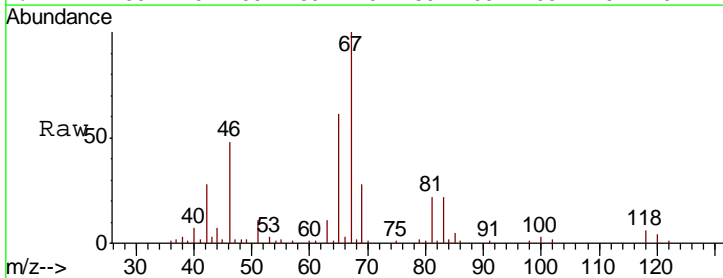
Instrument :  
 MSVOA\_U  
 ClientSampleID :  
 C0JB5

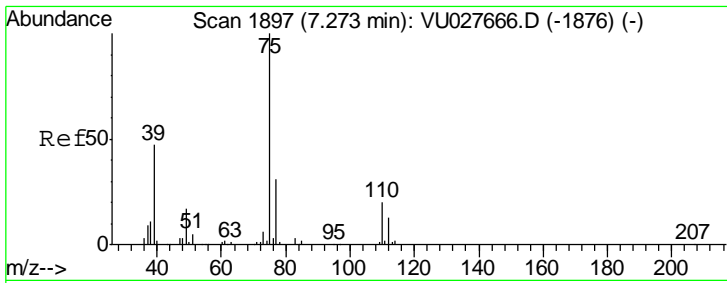
Tgt Ion	Resp	Lower	Upper
83	100		
55	1.7	69.0	103.4#
98	3.7	35.4	53.2#



#37  
 1,2-Dichloropropane  
 Concen: 0.528 ug/L  
 RT: 6.33 min Scan# 1605  
 Delta R.T. -0.10 min  
 Lab File: VU027677.D  
 Acq: 17 Oct 2018 14:46

Tgt Ion	Resp	Lower	Upper
63	100		
112	0.0	2.8	4.2#

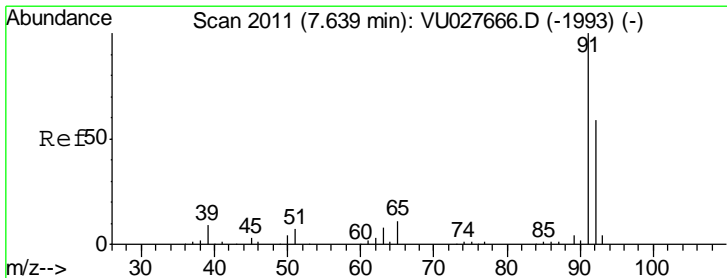
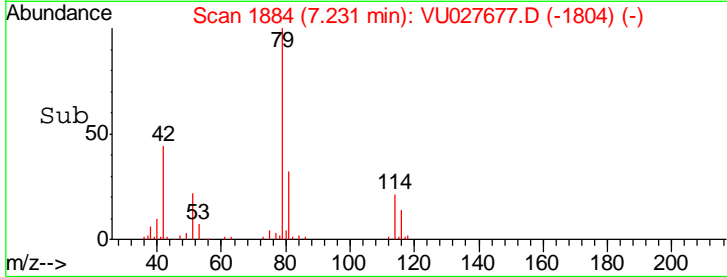
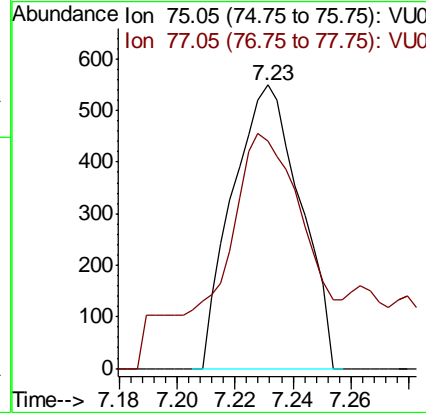
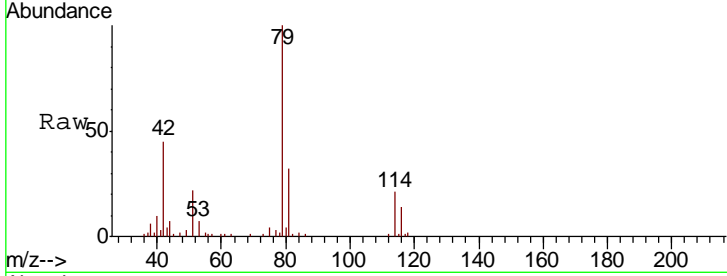




#39  
 cis-1,3-Dichloropropene  
 Concen: 0.087 ug/L  
 RT: 7.23 min Scan# 1884  
 Delta R.T. -0.04 min  
 Lab File: VU027677.D  
 Acq: 17 Oct 2018 14:46

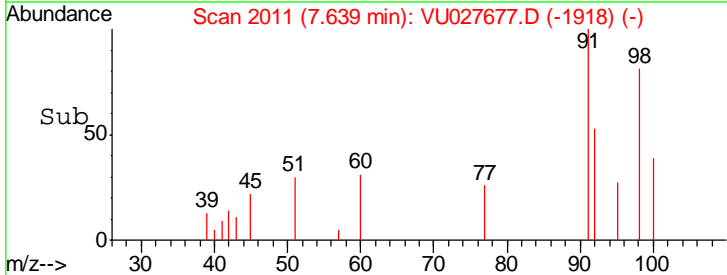
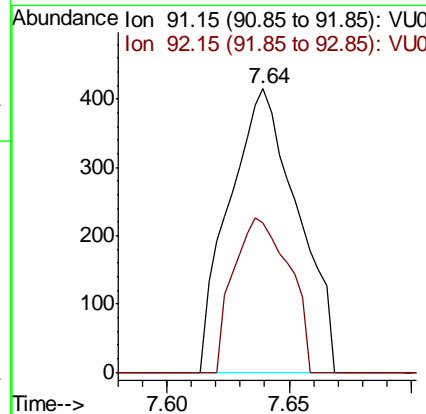
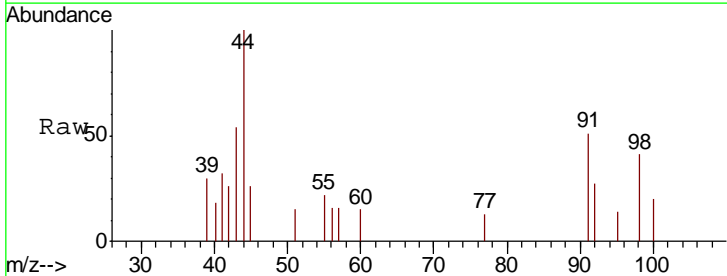
Instrument : MSVOA\_U  
 ClientSampled : C0JB5

Tgt Ion: 75 Resp: 890  
 Ion Ratio Lower Upper  
 75 100  
 77 80.1 22.2 41.2#

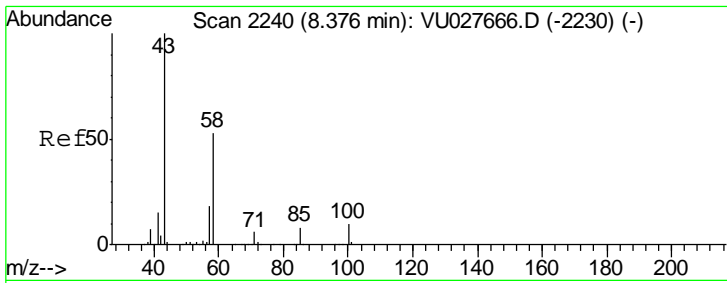


#42  
 Toluene  
 Concen: 0.031 ug/L  
 RT: 7.64 min Scan# 2011  
 Delta R.T. 0.00 min  
 Lab File: VU027677.D  
 Acq: 17 Oct 2018 14:46

Tgt Ion: 91 Resp: 805  
 Ion Ratio Lower Upper  
 91 100  
 92 52.8 41.1 76.3



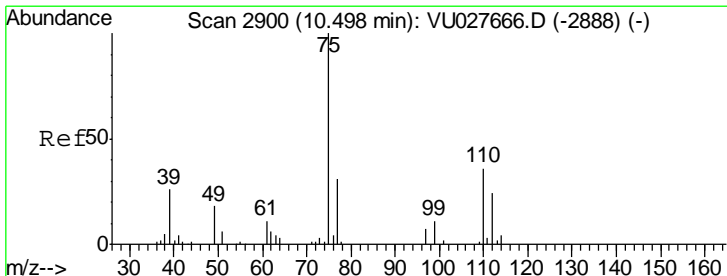
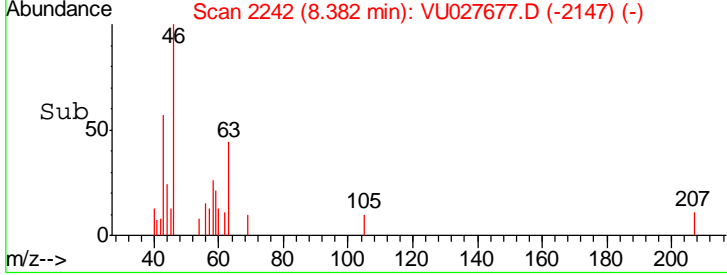
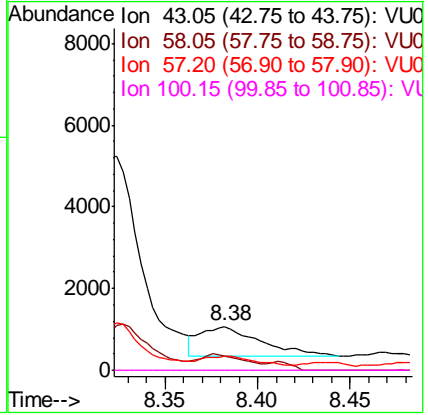
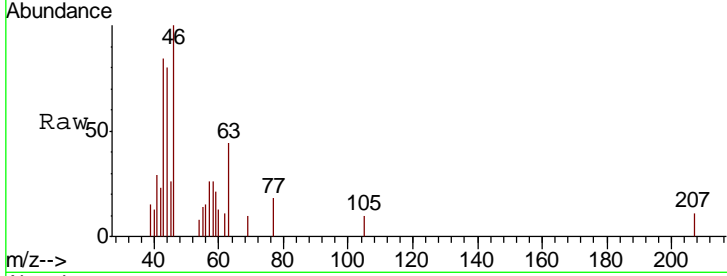




#48  
 2-Hexanone  
 Concen: 0.486 ug/L  
 RT: 8.38 min Scan# 2242  
 Delta R.T. 0.01 min  
 Lab File: VU027677.D  
 Acq: 17 Oct 2018 14:46

Instrument : MSVOA\_U  
 ClientSampled : C0JB5

Tgt Ion	Resp	Lower	Upper
43	1655		
58	42.5	42.7	64.1#
57	25.3	14.5	21.7#
100	0.0	8.1	12.1#



#59  
 1,2,3-Trichloropropane  
 Concen: 1.112 ug/L  
 RT: 11.48 min Scan# 3207  
 Delta R.T. 0.99 min  
 Lab File: VU027677.D  
 Acq: 17 Oct 2018 14:46

Tgt Ion	Resp	Lower	Upper
75	4500		
77	37.5	26.9	40.3

