

Data Path : Z:\VOASRV\HPCHEM1\MSVOA U\DATA\VU101718\  
 Data File : VU027670.D  
 Acq On : 17 Oct 2018 11:32  
 Operator : MD/SY  
 Sample : VU1017WBL01  
 Misc : 25.0mL/MSVOA U/WATER  
 ALS Vial : 8 Sample Multiplier: 1

Instrument :  
 MSVOA\_U  
 ClientSampled :  
 VBLK59

Integration Parameters: rteint.p  
 Integrator: RTE  
 Smoothing : ON Filtering: 5  
 Sampling : 1 Min Area: 3 % of largest Peak  
 Start Thrs: 0.1 Max Peaks: 100  
 Stop Thrs : 0 Peak Location: TOP

If leading or trailing edge < 100 prefer < Baseline drop else tangent >  
 Peak separation: 5

Method : Z:\VOASRV\HPCHEM1\MSVOA\_U\METHOD\SOMUTR101718WMA.M  
 Title : TRACE VOA SOM01.0

Signal : TIC

peak #	R.T. min	first scan	max scan	last scan	PK TY	peak height	corr. area	corr. % max.	% of total
1	1.328	38	48	51	rBV10	5310	9538	2.38%	0.351%
2	1.399	64	70	79	rVB	44702	47191	11.80%	1.737%
3	1.685	152	159	170	rVB	35507	43948	10.99%	1.617%
4	2.276	334	343	355	rBV	71623	109779	27.45%	4.040%
5	4.228	934	950	971	rBV2	33336	135769	33.95%	4.996%
6	4.652	1071	1082	1100	rVB	49728	116214	29.06%	4.277%
7	5.341	1279	1296	1313	rVB2	110555	284154	71.05%	10.457%
8	5.887	1454	1466	1485	rBV	106914	207101	51.78%	7.621%
9	6.334	1593	1605	1620	rBV	71331	139711	34.93%	5.141%
10	7.231	1872	1884	1900	rBV	42929	77966	19.49%	2.869%
11	7.566	1974	1988	2009	rBV	153333	275230	68.81%	10.129%
12	7.855	2067	2078	2089	rBV	27995	46493	11.62%	1.711%
13	8.328	2213	2225	2253	rBV	207160	399962	100.00%	14.719%
14	9.093	2447	2463	2479	rBV	150085	256284	64.08%	9.431%
15	10.437	2867	2881	2897	rBV	51892	85875	21.47%	3.160%
16	11.485	3196	3207	3229	rBV	148037	238646	59.67%	8.782%
17	11.861	3313	3324	3340	rBV	132847	218575	54.65%	8.044%
18	12.893	3638	3645	3657	rVB5	3199	5097	1.27%	0.188%
19	13.511	3828	3837	3848	rBV6	4248	7451	1.86%	0.274%
20	13.755	3900	3913	3920	rBV3	3572	6316	1.58%	0.232%
21	13.993	3980	3987	3998	rBV7	4085	6071	1.52%	0.223%

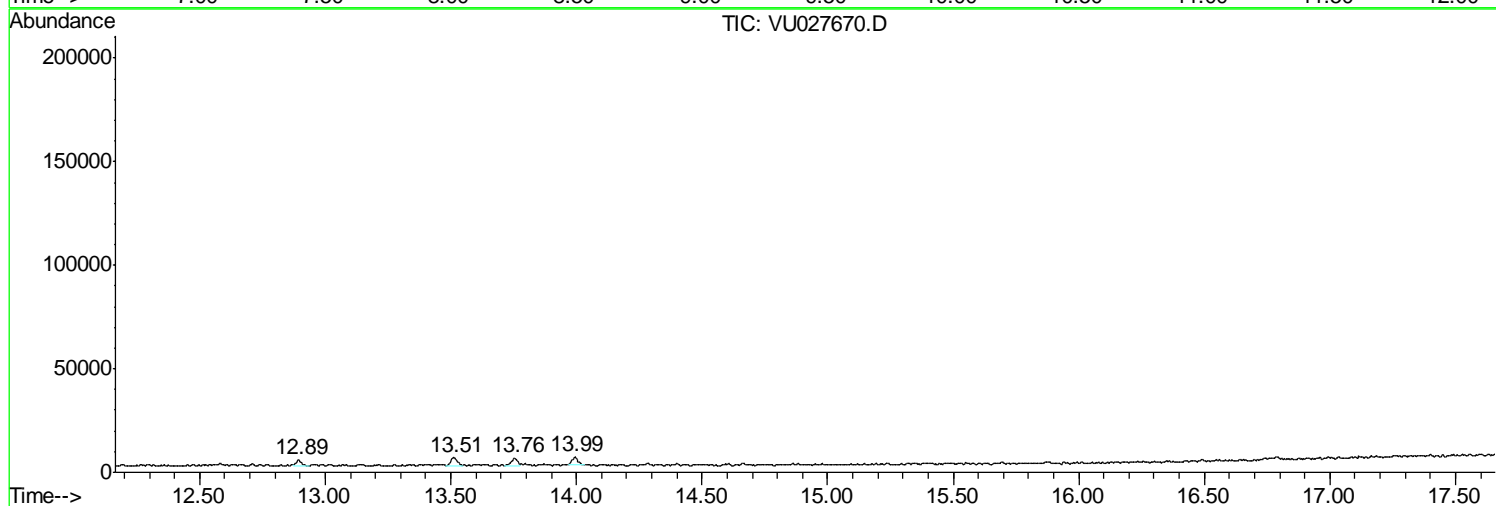
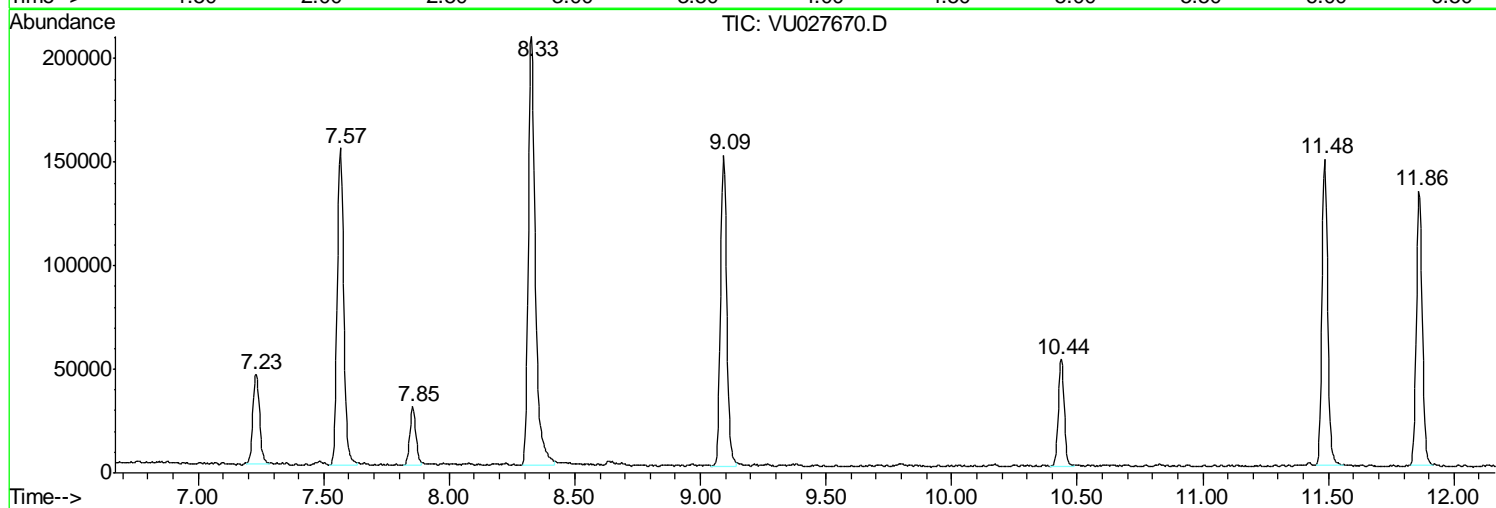
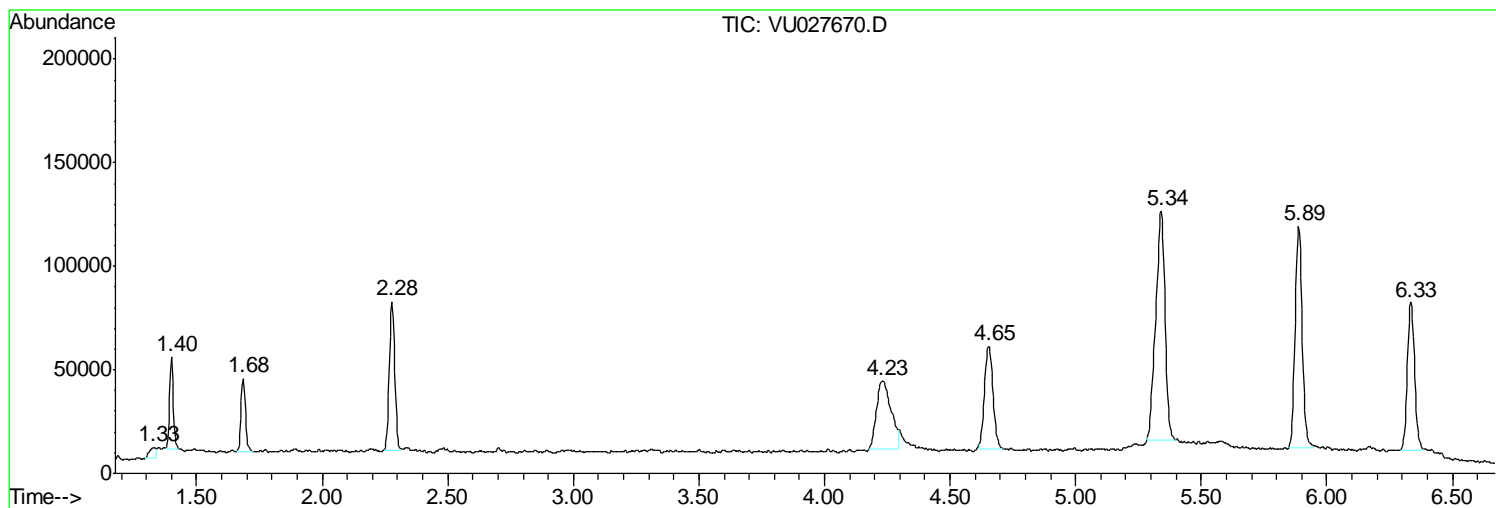
Sum of corrected areas: 2717371

Data Path : Z:\VOASRV\HPCHEM1\MSVOA U\DATA\VU101718\  
Data File : VU027670.D  
Acq On : 17 Oct 2018 11:32  
Operator : MD/SY  
Sample : VU1017WBL01  
Misc : 25.0mL/MSVOA U/WATER  
ALS Vial : 8 Sample Multiplier: 1

Instrument :  
MSVOA\_U  
ClientSampled :  
VBLK59

Quant Method : Z:\VOASRV\HPCHEM1\MSVOA\_U\METHOD\SOMUTR101718WMA.M  
Quant Title : TRACE VOA SOM01.0

TIC Library : C:\DATABASE\NIST11.L  
TIC Integration Parameters: LSCINT.P



Data Path : Z:\VOASRV\HPCHEM1\MSVOA\_U\DATA\VU101718\  
Data File : VU027670.D  
Acq On : 17 Oct 2018 11:32  
Operator : MD/SY  
Sample : VU1017WBL01  
Misc : 25.0mL/MSVOA\_U/WATER  
ALS Vial : 8 Sample Multiplier: 1

Instrument :  
MSVOA\_U  
ClientSampleId :  
VBLK59

Quant Method : Z:\VOASRV\HPCHEM1\MSVOA\_U\METHOD\SOMUTR101718WMA.M  
Quant Title : TRACE VOA SOM01.0

TIC Library : C:\DATABASE\NIST11.L  
TIC Integration Parameters: LSCINT.P

No Library Search Compounds Detected

\*\*\*\*\*

Data Path : Z:\VOASRV\HPCHEM1\MSVOA\_U\DATA\VU101718\  
Data File : VU027670.D  
Acq On : 17 Oct 2018 11:32  
Operator : MD/SY  
Sample : VU1017WBL01  
Misc : 25.0mL/MSVOA\_U/WATER  
ALS Vial : 8 Sample Multiplier: 1

Instrument :  
MSVOA\_U  
ClientSampleId :  
VBLK59

Quant Method : Z:\VOASRV\HPCHEM1\MSVOA\_U\METHOD\SOMUTR101718WMA.M  
Quant Title : TRACE VOA SOM01.0

TIC Library : C:\DATABASE\NIST11.L  
TIC Integration Parameters: LSCINT.P

TIC Top Hit name	RT	EstConc	Units	Response	--Internal Standard--			
					#	RT	Resp	Conc

---