

Data File : VU035211.D  
 Acq On : 17 Oct 2019 15:34  
 Operator : JC/SP  
 Sample : VU1017WBL01  
 Misc : 25.0mL/MSVOA\_U/WATER  
 ALS Vial : 13 Sample Multiplier: 1

Instrument :  
 MSVOA\_U  
 ClientSampleId :  
 VBLK24

Quant Time: Oct 18 03:49:02 2019  
 Quant Method : Z:\VOASRV\HPCHEM1\MSVOA\_U\METHOD\SOMUTR101719WMA.M  
 Quant Title : TRACE VOA SOM01.0  
 QLast Update : Fri Oct 18 03:45:16 2019  
 Response via : Initial Calibration

Internal Standards	R.T.	QIon	Response	Conc	Units	Dev(Min)
1) 1,4-Difluorobenzene	6.29	114	380110	5.00	ug/L	0.00
28) Chlorobenzene-d5	9.45	117	363725	5.00	ug/L	0.00
60) 1,4-Dichlorobenzene-d4	11.84	152	149626	5.00	ug/L	0.00

System Monitoring Compounds

4) Vinyl Chloride-d3	1.61	65	104963	4.53	ug/L	0.00
Spiked Amount	5.000	Range	40 - 130	Recovery	=	90.60%
7) Chloroethane-d5	1.93	69	96652	4.56	ug/L	0.00
Spiked Amount	5.000	Range	65 - 130	Recovery	=	91.20%
11) 1,1-Dichloroethene-d2	2.59	63	141505	3.30	ug/L	0.00
Spiked Amount	5.000	Range	60 - 125	Recovery	=	66.00%
20) 2-Butanone-d5	4.72	46	366017	54.95	ug/L	0.00
Spiked Amount	50.000	Range	40 - 130	Recovery	=	109.90%
24) Chloroform-d	5.11	84	194183	4.59	ug/L	0.00
Spiked Amount	5.000	Range	70 - 125	Recovery	=	91.80%
26) 1,2-Dichloroethane-d4	5.75	65	114843	4.89	ug/L	0.00
Spiked Amount	5.000	Range	70 - 130	Recovery	=	97.80%
32) Benzene-d6	5.77	84	389401	4.68	ug/L	0.00
Spiked Amount	5.000	Range	70 - 125	Recovery	=	93.60%
36) 1,2-Dichloropropane-d6	6.73	67	127995	4.85	ug/L	0.00
Spiked Amount	5.000	Range	60 - 140	Recovery	=	97.00%
41) Toluene-d8	7.93	98	359590	4.52	ug/L	0.00
Spiked Amount	5.000	Range	70 - 130	Recovery	=	90.40%
43) trans-1,3-Dichloropropene-	8.22	79	60444	4.72	ug/L	0.00
Spiked Amount	5.000	Range	55 - 130	Recovery	=	94.40%
46) 2-Hexanone-d5	8.69	63	300324	53.13	ug/L	0.00
Spiked Amount	50.000	Range	45 - 130	Recovery	=	106.26%
57) 1,1,2,2-Tetrachloroethane-	10.79	84	119203	5.06	ug/L	0.00
Spiked Amount	5.000	Range	65 - 120	Recovery	=	101.20%
64) 1,2-Dichlorobenzene-d4	12.22	152	126726	4.65	ug/L	0.00
Spiked Amount	5.000	Range	80 - 120	Recovery	=	93.00%

Target Compounds

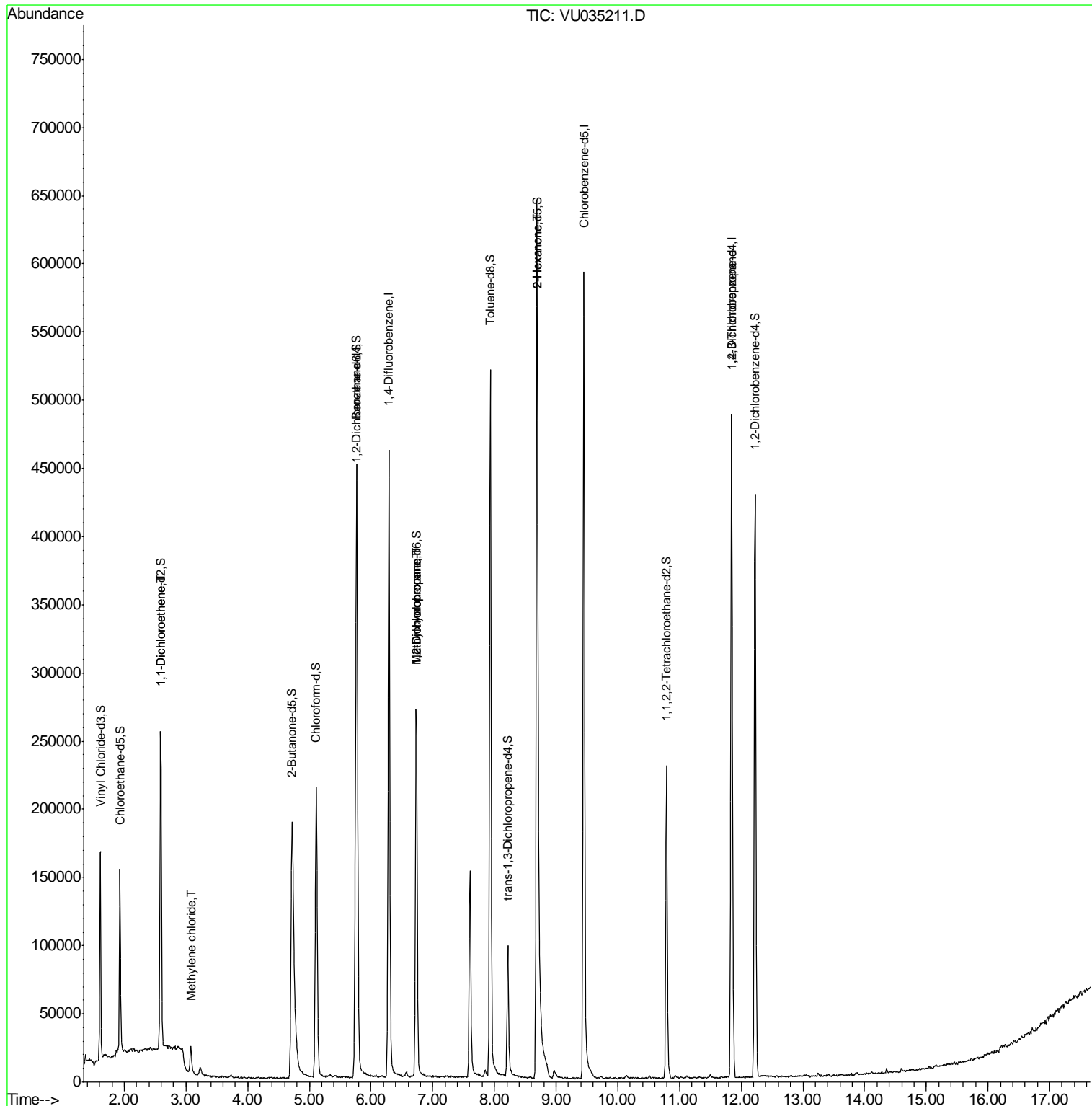
					Qvalue
12) 1,1-Dichloroethene	2.59	96	1532	0.063 ug/L #	1
16) Methylene chloride	3.08	84	10001	0.340 ug/L	91
35) Methylcyclohexane	6.73	83	29938	0.623 ug/L #	19
37) 1,2-Dichloropropane	6.74	63	14469	0.533 ug/L #	86
48) 2-Hexanone	8.69	43	30550	2.375 ug/L #	65
59) 1,2,3-Trichloropropane	11.84	75	18425	0.973 ug/L	90

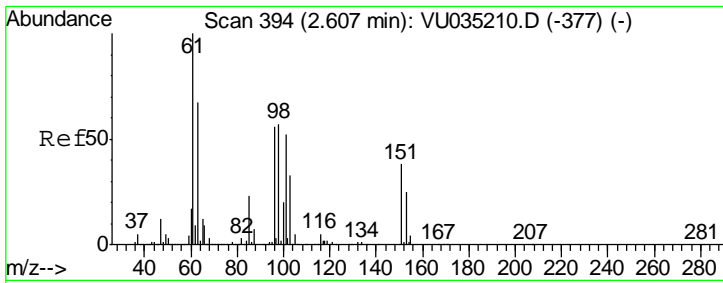
(#) = qualifier out of range (m) = manual integration (+) = signals summed

Data File : VU035211.D  
Acq On : 17 Oct 2019 15:34  
Operator : JC/SP  
Sample : VU1017WBL01  
Misc : 25.0mL/MSVOA\_U/WATER  
ALS Vial : 13 Sample Multiplier: 1

Instrument :  
MSVOA\_U  
Client Sampled :  
VBLK24

Quant Time: Oct 18 03:49:02 2019  
Quant Method : Z:\VOASRV\HPCHEM1\MSVOA\_U\METHOD\SOMUTR101719WMA.M  
Quant Title : TRACE VOA SOM01.0  
QLast Update : Fri Oct 18 03:45:16 2019  
Response via : Initial Calibration

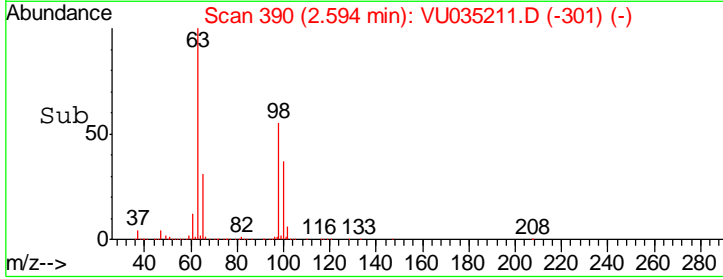
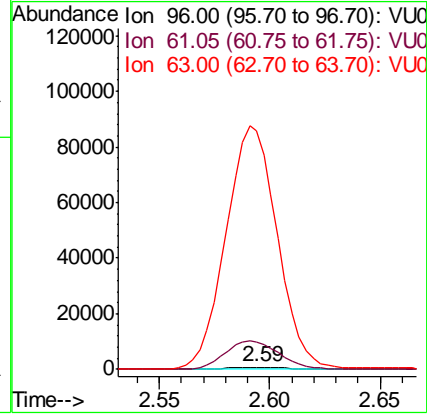
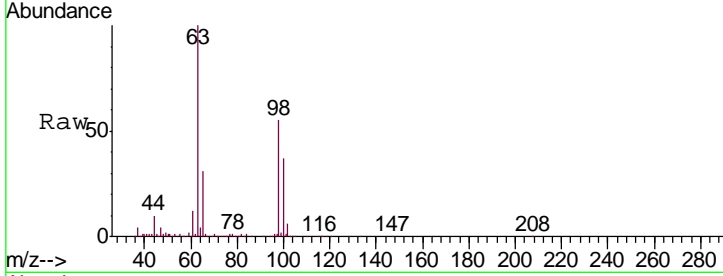




#12  
 1,1-Dichloroethene  
 Concen: 0.063 ug/L  
 RT: 2.59 min Scan# 390  
 Delta R.T. -0.01 min  
 Lab File: VU035211.D  
 Acq: 17 Oct 2019 15:34

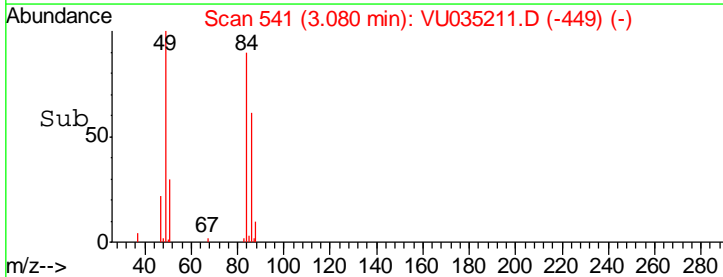
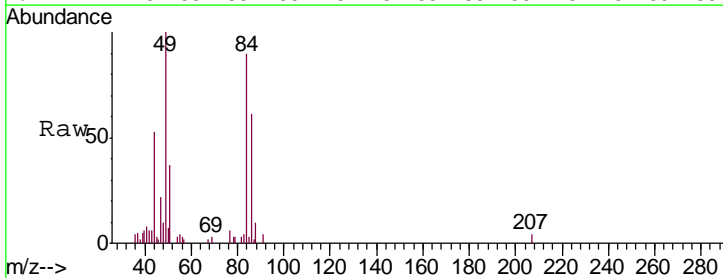
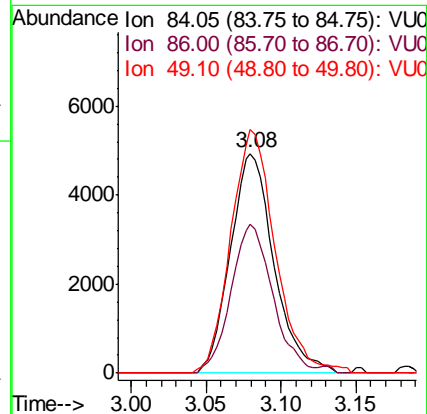
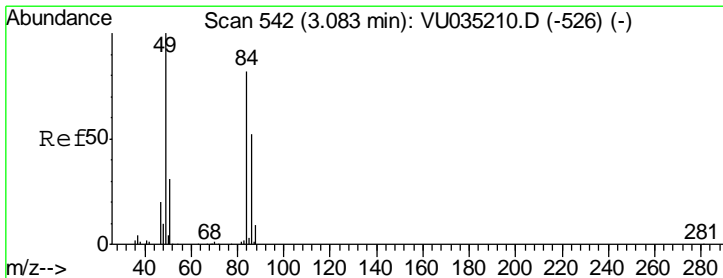
Instrument :  
 MSVOA\_U  
 ClientSampled :  
 VBLK24

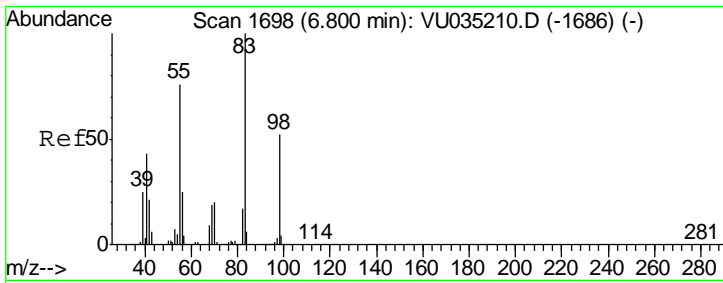
Tgt Ion: 96 Resp: 1532  
 Ion Ratio Lower Upper  
 96 100  
 61 1412.3 120.6 224.0#  
 63 12221.1 86.8 161.2#



#16  
 Methylene chloride  
 Concen: 0.340 ug/L  
 RT: 3.08 min Scan# 541  
 Delta R.T. -0.00 min  
 Lab File: VU035211.D  
 Acq: 17 Oct 2019 15:34

Tgt Ion: 84 Resp: 10001  
 Ion Ratio Lower Upper  
 84 100  
 86 67.6 45.4 84.2  
 49 110.7 86.8 161.2

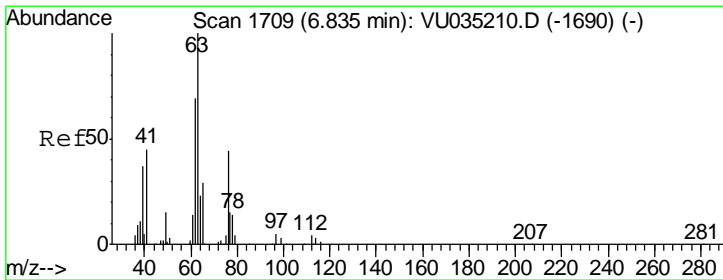
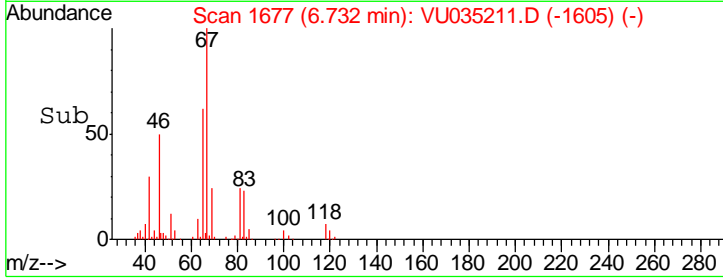
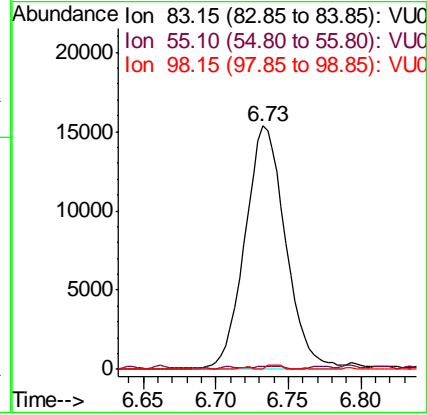
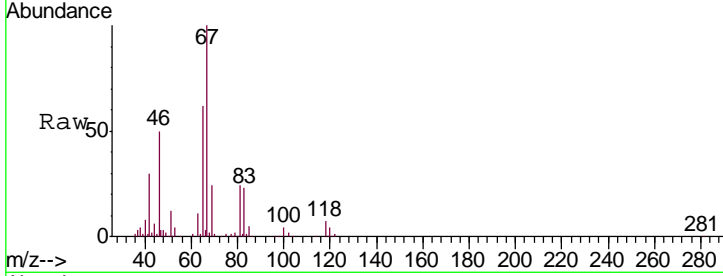




#35  
 Methylcyclohexane  
 Concen: 0.623 ug/L  
 RT: 6.73 min Scan# 1677  
 Delta R.T. -0.07 min  
 Lab File: VU035211.D  
 Acq: 17 Oct 2019 15:34

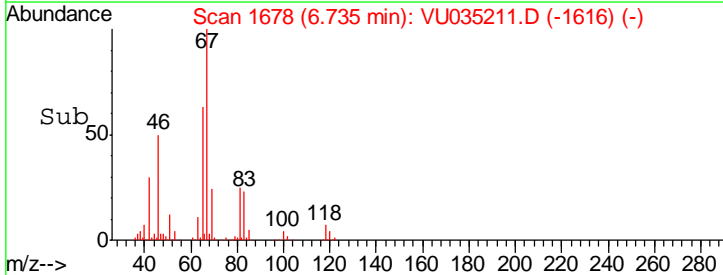
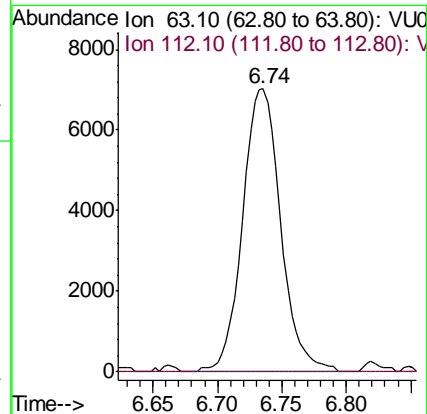
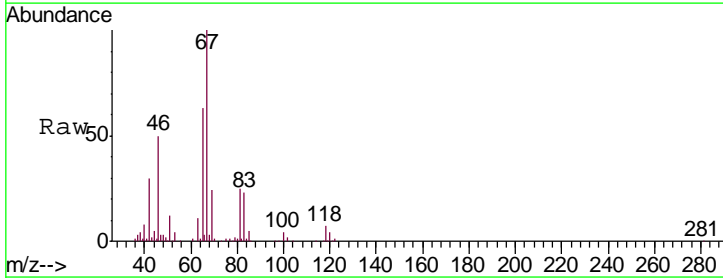
Instrument :  
 MSVOA\_U  
 ClientSampled :  
 VBLK24

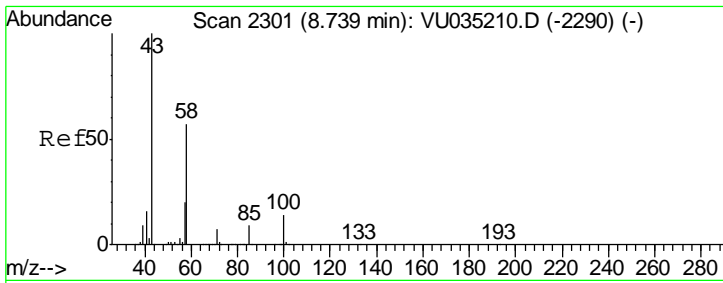
Tgt Ion	Resp	Lower	Upper
83	29938		
55	0.9	60.4	90.6#
98	0.7	39.5	59.3#



#37  
 1,2-Dichloropropane  
 Concen: 0.533 ug/L  
 RT: 6.74 min Scan# 1678  
 Delta R.T. -0.10 min  
 Lab File: VU035211.D  
 Acq: 17 Oct 2019 15:34

Tgt Ion	Resp	Lower	Upper
63	14469		
112	0.0	3.7	5.5#

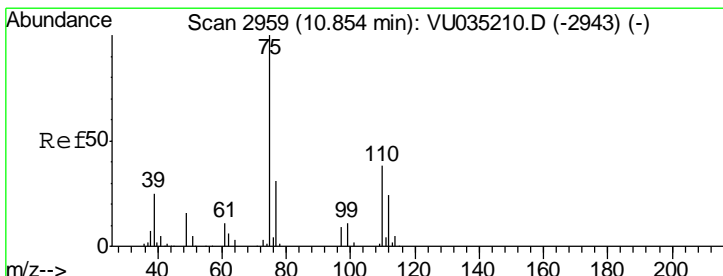
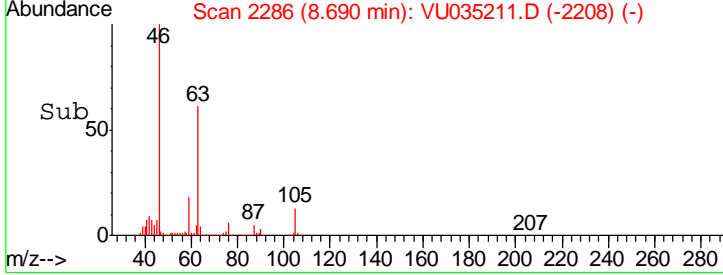
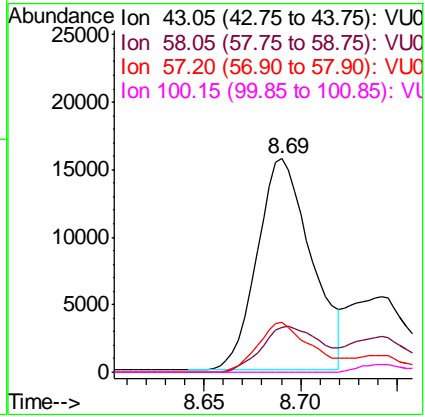
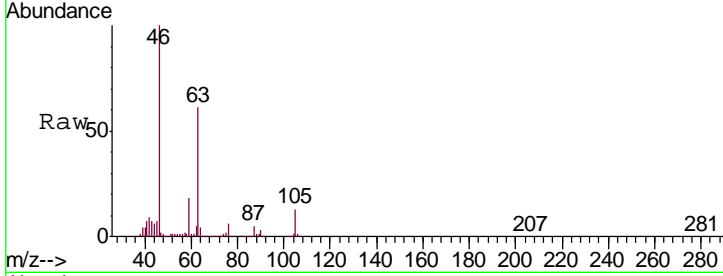




#48  
 2-Hexanone  
 Concen: 2.375 ug/L  
 RT: 8.69 min Scan# 2286  
 Delta R.T. -0.05 min  
 Lab File: VU035211.D  
 Acq: 17 Oct 2019 15:34

Instrument : MSVOA\_U  
 ClientSampled : VBLK24

Tgt Ion	Resp	Lower	Upper
43	30550		
58	24.1	45.1	67.7#
57	24.1	16.0	24.0#
100	0.0	10.4	15.6#



#59  
 1,2,3-Trichloropropane  
 Concen: 0.973 ug/L  
 RT: 11.84 min Scan# 3267  
 Delta R.T. 0.99 min  
 Lab File: VU035211.D  
 Acq: 17 Oct 2019 15:34

Tgt Ion	Resp	Lower	Upper
75	18425		
77	38.5	26.2	39.2

