

Data Path : Z:\VOASRV\HPCHEM1\MSVOA U\DATA\VU101720\
 Data File : VU040771.D
 Acq On : 17 Oct 2020 18:56
 Operator : SY/MD
 Sample : L4421-11
 Misc : 25.1mL/MSVOA U/WATER
 ALS Vial : 6 Sample Multiplier: 1

Instrument :
 MSVOA_U
 ClientSampled :
 BFSS5

Quant Time: Oct 19 03:09:35 2020
 Quant Method : Z:\VOASRV\HPCHEM1\MSVOA_U\METHOD\SOMUTR100820WMA.M
 Quant Title : TRACE VOA SOM01.0
 QLast Update : Mon Oct 19 03:08:11 2020
 Response via : Initial Calibration

Internal Standards	R.T.	QIon	Response	Conc	Units	Dev(Min)
1) 1,4-Difluorobenzene	6.26	114	118538	5.00	ug/L	0.00
28) Chlorobenzene-d5	9.42	117	122869	5.00	ug/L	0.00
60) 1,4-Dichlorobenzene-d4	11.81	152	51423	5.00	ug/L	0.00

System Monitoring Compounds

4) Vinyl Chloride-d3	1.61	65	33932	3.45	ug/L	0.00
Spiked Amount	5.000	Range	40 - 130	Recovery	=	69.00%
7) Chloroethane-d5	1.93	69	33847	4.47	ug/L	0.00
Spiked Amount	5.000	Range	65 - 130	Recovery	=	89.40%
11) 1,1-Dichloroethene-d2	2.58	63	56313	2.93	ug/L	0.00
Spiked Amount	5.000	Range	60 - 125	Recovery	=	58.60%#
20) 2-Butanone-d5	4.66	46	168449	53.59	ug/L	0.00
Spiked Amount	50.000	Range	40 - 130	Recovery	=	107.18%
24) Chloroform-d	5.08	84	84700	4.91	ug/L	0.00
Spiked Amount	5.000	Range	70 - 125	Recovery	=	98.20%
26) 1,2-Dichloroethane-d4	5.72	65	54140	5.16	ug/L	0.00
Spiked Amount	5.000	Range	70 - 130	Recovery	=	103.20%
32) Benzene-d6	5.74	84	147851	4.46	ug/L	0.00
Spiked Amount	5.000	Range	70 - 125	Recovery	=	89.20%
36) 1,2-Dichloropropane-d6	6.70	67	53301	4.84	ug/L	0.00
Spiked Amount	5.000	Range	60 - 140	Recovery	=	96.80%
41) Toluene-d8	7.91	98	111919	3.77	ug/L	0.00
Spiked Amount	5.000	Range	70 - 130	Recovery	=	75.40%
43) trans-1,3-Dichloropropene-	8.19	79	19188	4.12	ug/L	0.00
Spiked Amount	5.000	Range	55 - 130	Recovery	=	82.40%
46) 2-Hexanone-d5	8.64	63	114466	47.66	ug/L	0.00
Spiked Amount	50.000	Range	45 - 130	Recovery	=	95.32%
57) 1,1,2,2-Tetrachloroethane-	10.75	84	47974	4.86	ug/L	0.00
Spiked Amount	5.000	Range	65 - 120	Recovery	=	97.20%
64) 1,2-Dichlorobenzene-d4	12.19	152	50127	5.26	ug/L	0.00
Spiked Amount	5.000	Range	80 - 120	Recovery	=	105.20%

Target Compounds

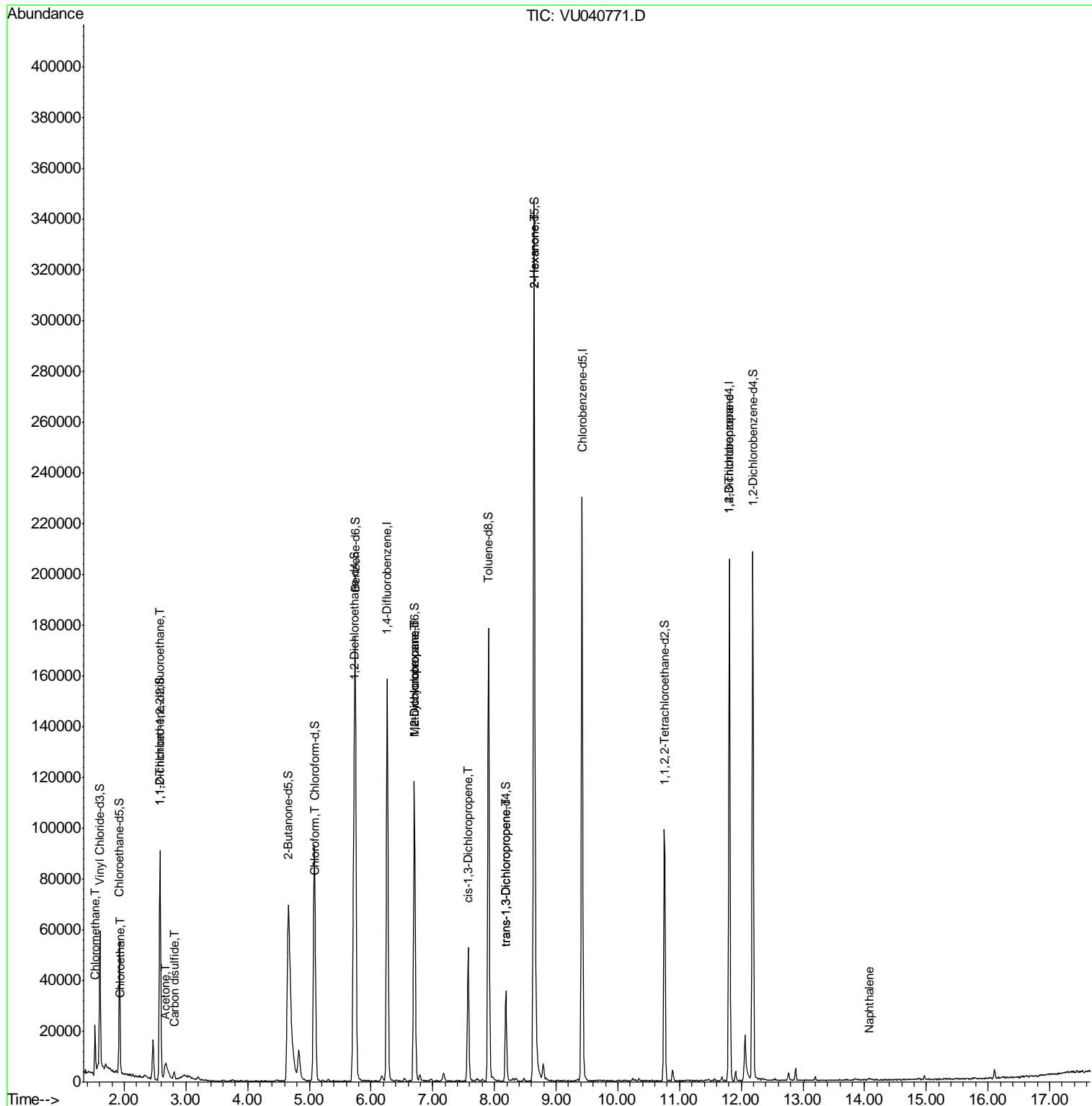
Target Compounds	R.T.	QIon	Response	Conc	Units	Ovalue
3) Chloromethane	1.53	50	12545	1.249	ug/L	95
8) Chloroethane	1.95	64	725	0.108	ug/L #	62
10) 1,1,2-Trichloro-1,2,2-trif	2.58	101	434	0.044	ug/L #	20
13) Acetone	2.66	43	4595	1.886	ug/L #	26
14) Carbon disulfide	2.81	76	3955	0.167	ug/L	98
25) Chloroform	5.11	83	2544	0.136	ug/L	82
35) Methylcyclohexane	6.70	83	12678	0.874	ug/L #	14
37) 1,2-Dichloropropane	6.70	63	6230	0.566	ug/L #	87
39) cis-1,3-Dichloropropene	7.58	75	1497	0.100	ug/L #	81
44) trans-1,3-Dichloropropene	8.19	75	1005	0.073	ug/L #	71
48) 2-Hexanone	8.64	43	15733	2.410	ug/L #	78
59) 1,2,3-Trichloropropane	11.81	75	7021	0.869	ug/L	97
69) Naphthalene	14.08	128	878	0.058	ug/L #	69

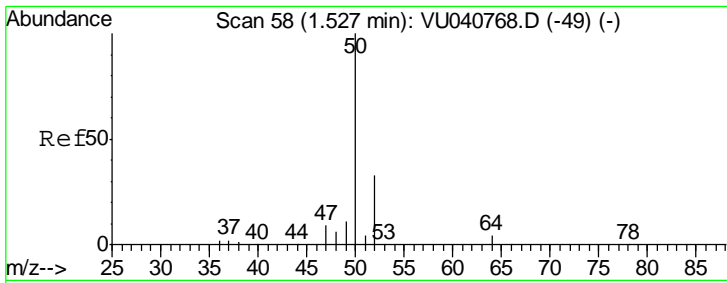
(#) = qualifier out of range (m) = manual integration (+) = signals summed

Data Path : Z:\VOASRV\HPCHEM1\MSVOA U\DATA\VU101720\
 Data File : VU040771.D
 Acq On : 17 Oct 2020 18:56
 Operator : SY/MD
 Sample : L4421-11
 Misc : 25.1mL/MSVOA U/WATER
 ALS Vial : 6 Sample Multiplier: 1

Instrument :
 MSVOA_U
 ClientSampleId :
 BFSS5

Quant Time: Oct 19 03:09:35 2020
 Quant Method : Z:\VOASRV\HPCHEM1\MSVOA_U\METHOD\SOMUTR100820WMA.M
 Quant Title : TRACE VOA SOM01.0
 QLast Update : Mon Oct 19 03:08:11 2020
 Response via : Initial Calibration

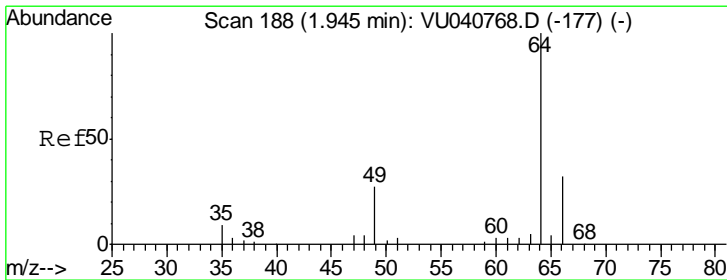
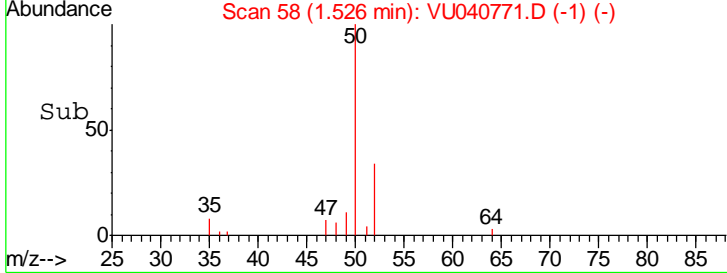
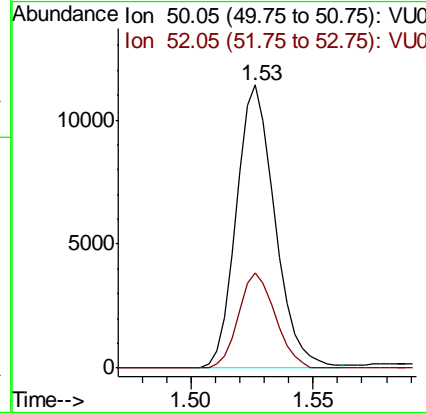
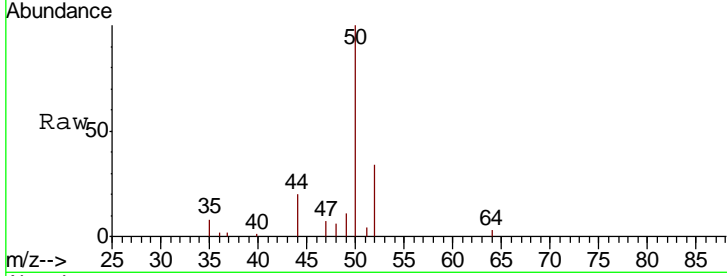




#3
 Chloromethane
 Concen: 1.249 ug/L
 RT: 1.53 min Scan# 58
 Delta R.T. -0.00 min
 Lab File: VU040771.D
 Acq: 17 Oct 2020 18:56

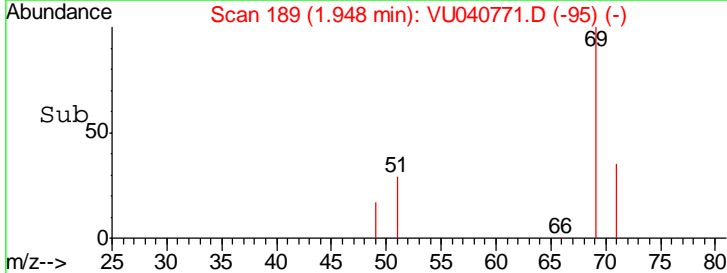
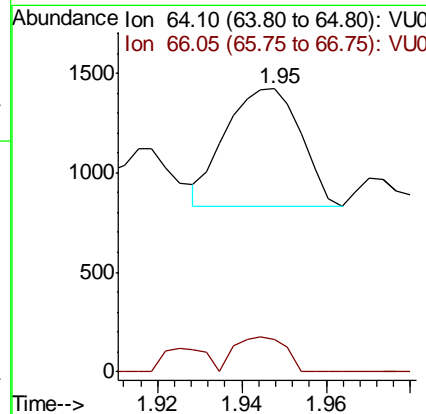
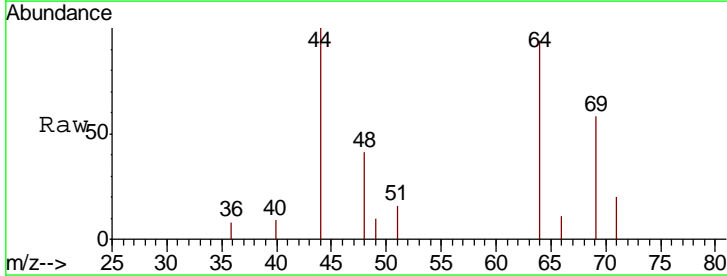
Instrument : MSVOA_U
 ClientSampled : BFSS5

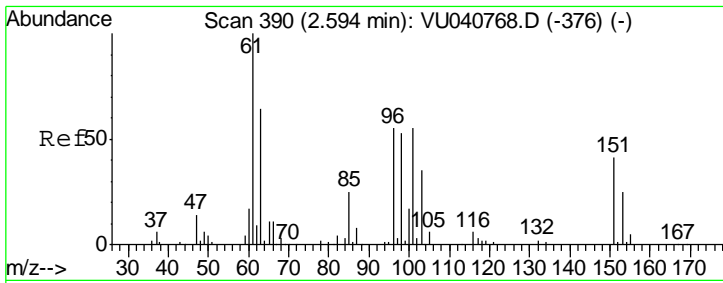
Tgt Ion	Resp	Lower	Upper
50	12545		
52	33.9	21.9	40.7



#8
 Chloroethane
 Concen: 0.108 ug/L
 RT: 1.95 min Scan# 189
 Delta R.T. 0.00 min
 Lab File: VU040771.D
 Acq: 17 Oct 2020 18:56

Tgt Ion	Resp	Lower	Upper
64	725		
66	11.6	23.3	43.3#

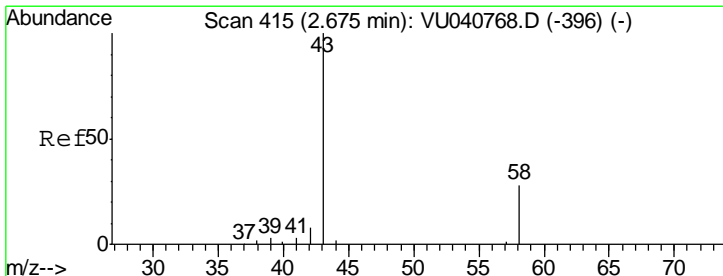
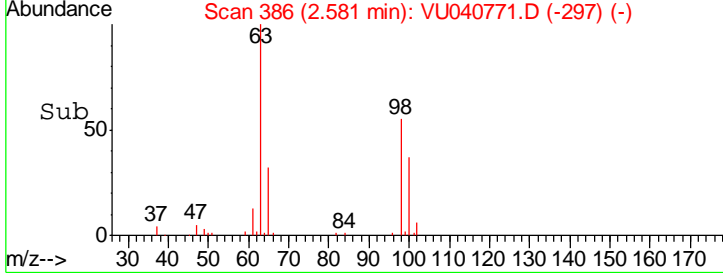
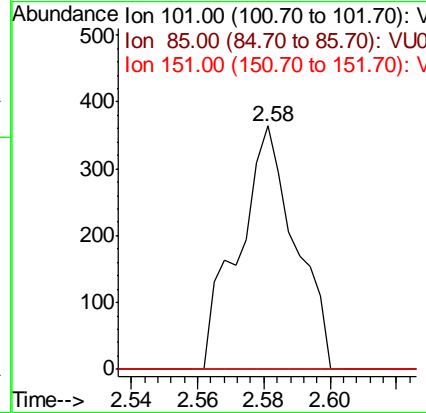
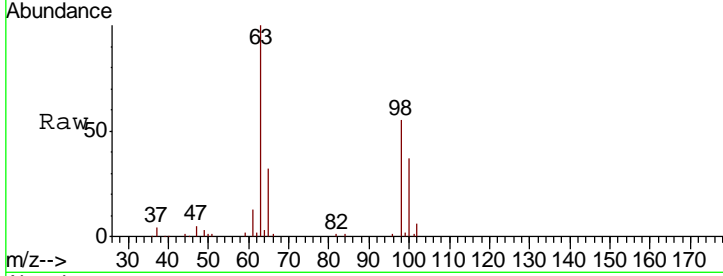




#10
 1,1,2-Trichloro-1,2,2-trifluoroethane
 Concen: 0.044 ug/L
 RT: 2.58 min Scan# 386
 Delta R.T. -0.01 min
 Lab File: VU040771.D
 Acq: 17 Oct 2020 18:56

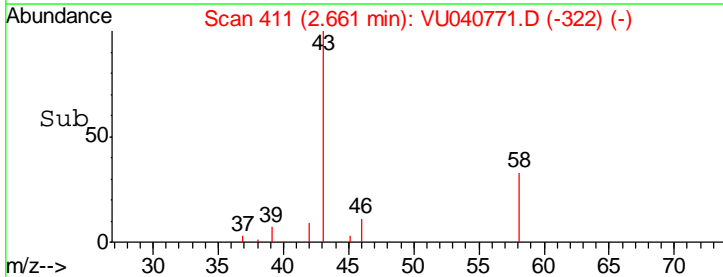
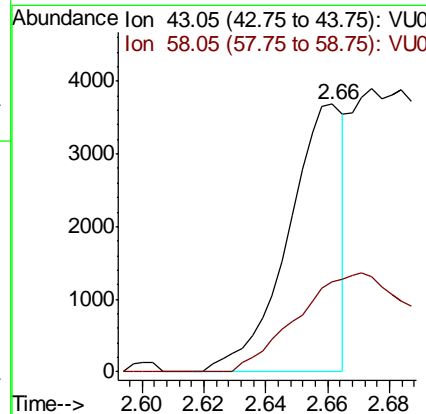
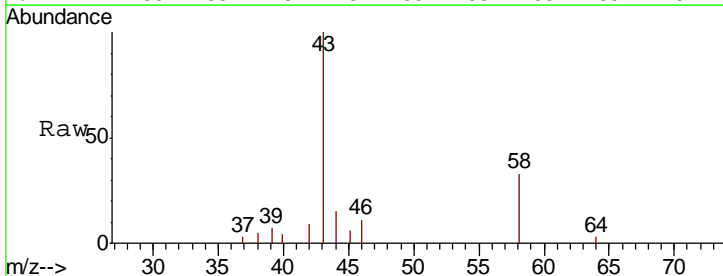
Instrument :
 MSVOA_U
ClientSampled :
 BFSS5

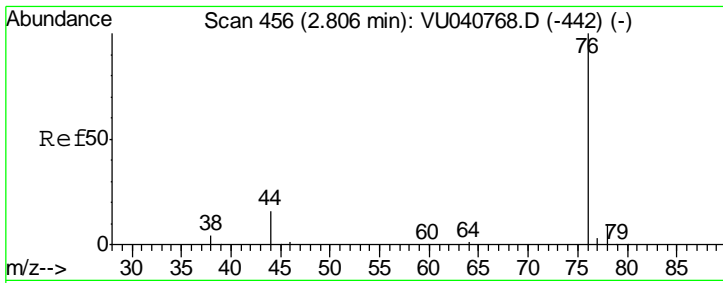
Tgt Ion	Resp	Lower	Upper
101	100		
85	0.0	36.7	55.1#
151	0.0	58.0	87.0#



#13
 Acetone
 Concen: 1.886 ug/L
 RT: 2.66 min Scan# 411
 Delta R.T. -0.01 min
 Lab File: VU040771.D
 Acq: 17 Oct 2020 18:56

Tgt Ion	Resp	Lower	Upper
43	100		
58	70.3	0.0	60.6#

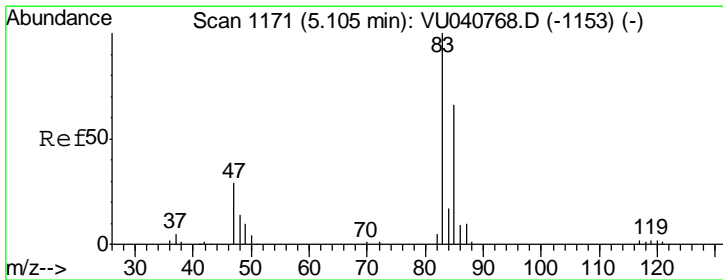
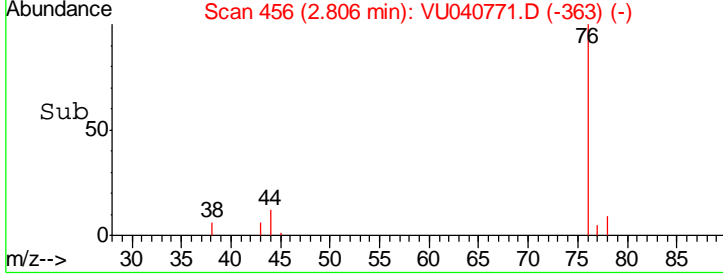
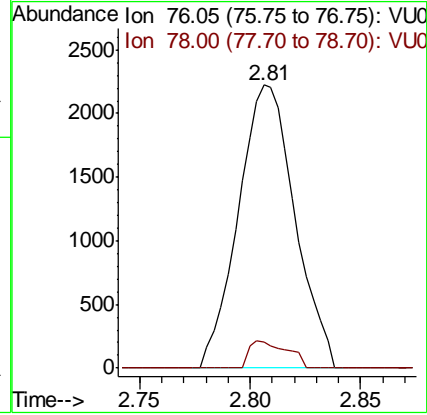
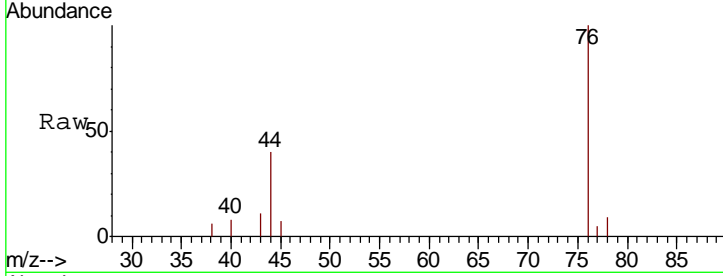




#14
 Carbon disulfide
 Concen: 0.167 ug/L
 RT: 2.81 min Scan# 456
 Delta R.T. -0.00 min
 Lab File: VU040771.D
 Acq: 17 Oct 2020 18:56

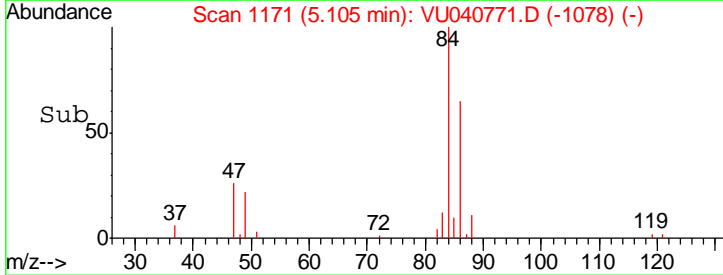
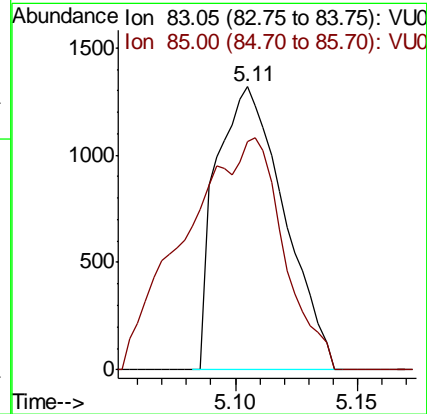
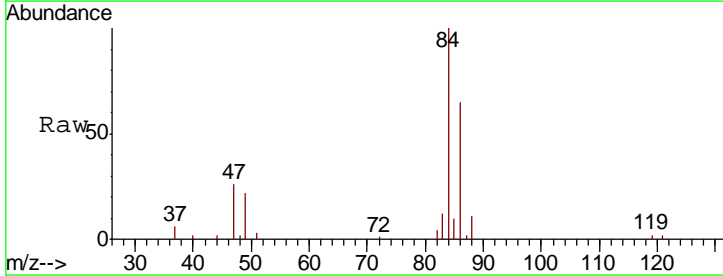
Instrument :
 MSVOA_U
 ClientSampled :
 BFSS5

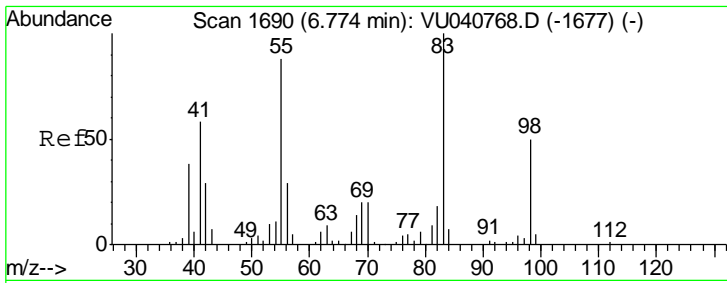
Tgt Ion	Resp	Lower	Upper
76	100		
78	9.1	6.8	10.2



#25
 Chloroform
 Concen: 0.136 ug/L
 RT: 5.11 min Scan# 1171
 Delta R.T. -0.00 min
 Lab File: VU040771.D
 Acq: 17 Oct 2020 18:56

Tgt Ion	Resp	Lower	Upper
83	100		
85	80.7	46.5	86.5

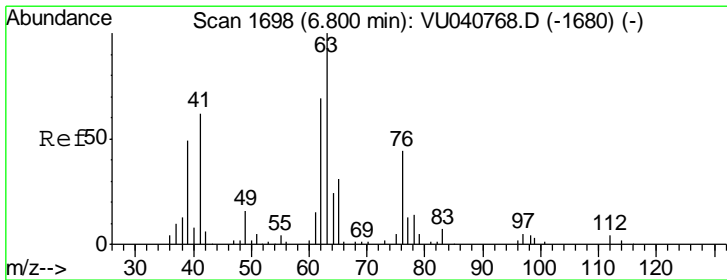
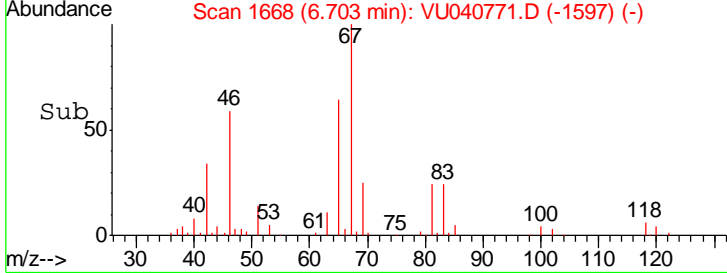
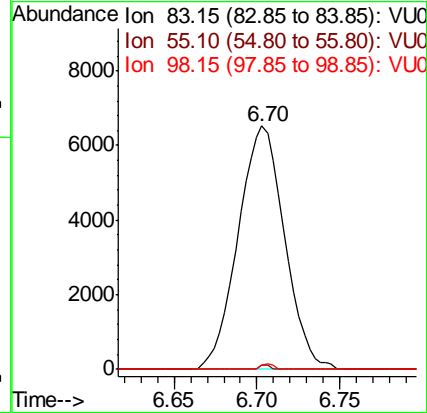
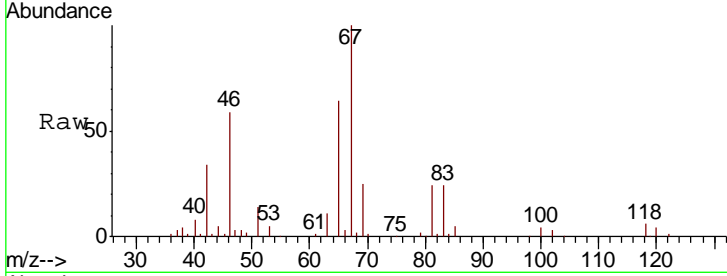




#35
 Methylcyclohexane
 Concen: 0.874 ug/L
 RT: 6.70 min Scan# 1668
 Delta R.T. -0.07 min
 Lab File: VU040771.D
 Acq: 17 Oct 2020 18:56

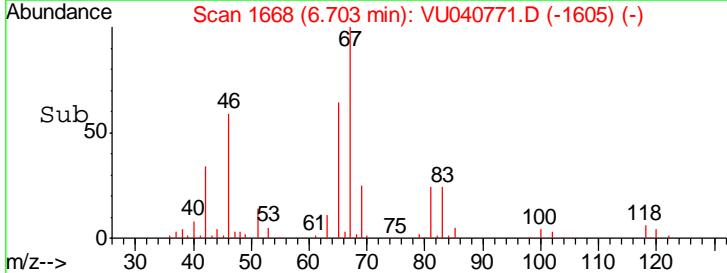
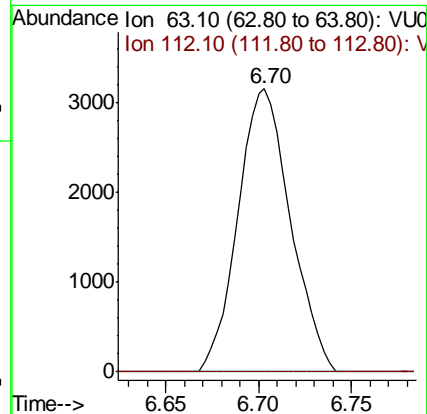
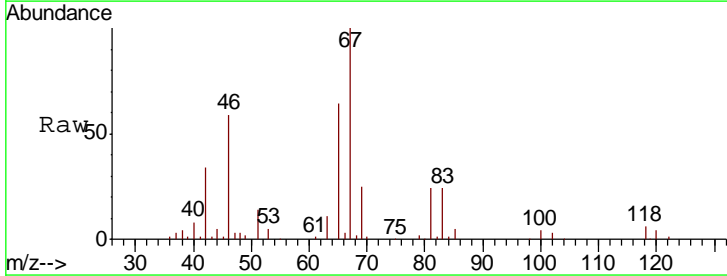
Instrument :
 MSVOA_U
 ClientSampled :
 BFSS5

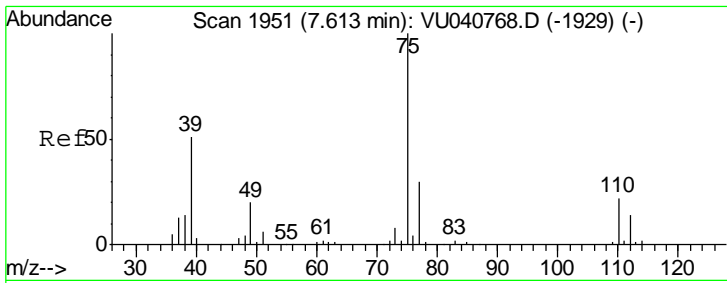
Tgt Ion	Resp	Lower	Upper
83	12678		
55	0.3	70.7	106.1#
98	0.6	38.4	57.6#



#37
 1,2-Dichloropropane
 Concen: 0.566 ug/L
 RT: 6.70 min Scan# 1668
 Delta R.T. -0.10 min
 Lab File: VU040771.D
 Acq: 17 Oct 2020 18:56

Tgt Ion	Resp	Lower	Upper
63	6230		
112	0.0	3.5	5.3#

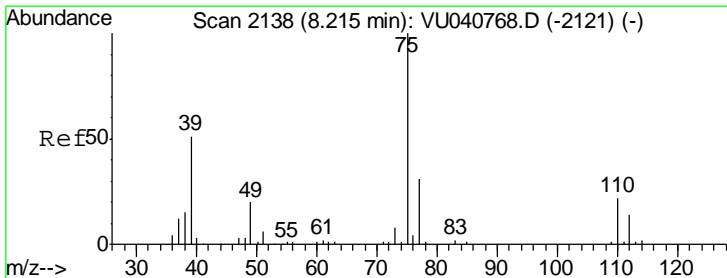
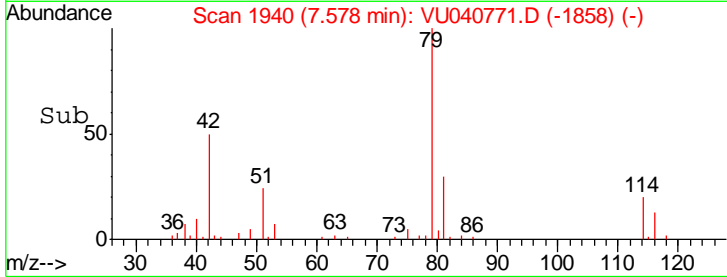
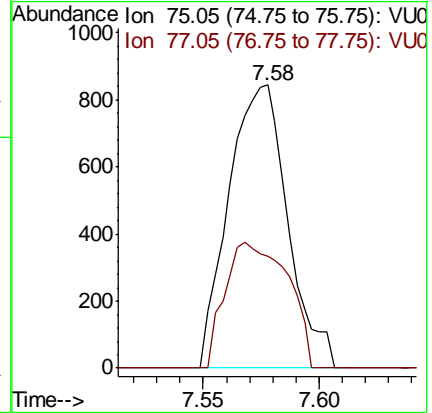
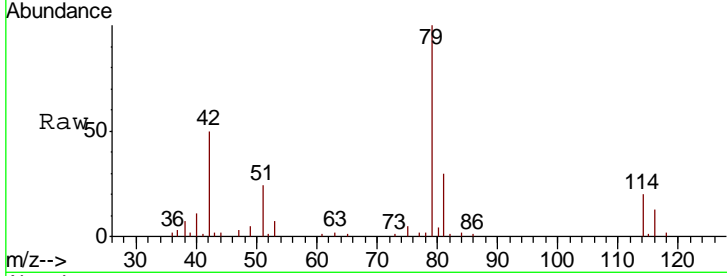




#39
 cis-1,3-Dichloropropene
 Concen: 0.100 ug/L
 RT: 7.58 min Scan# 1940
 Delta R.T. -0.04 min
 Lab File: VU040771.D
 Acq: 17 Oct 2020 18:56

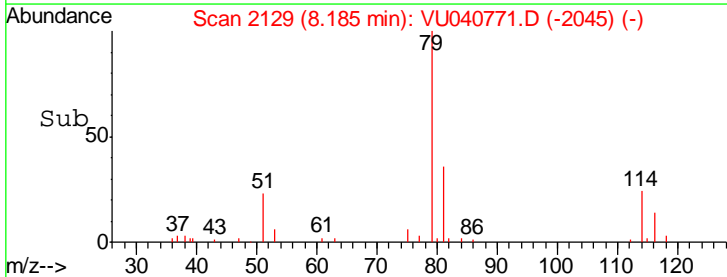
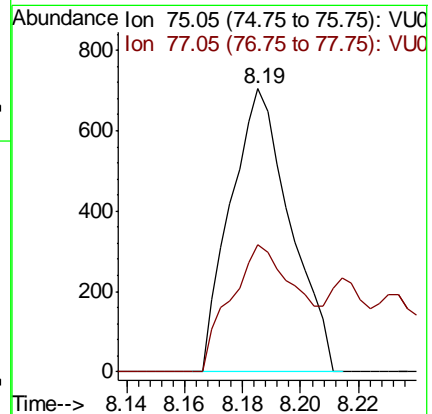
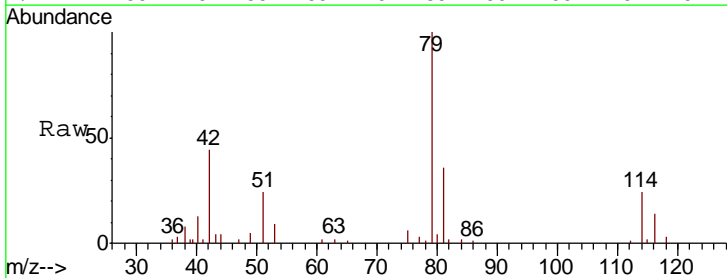
Instrument :
 MSVOA_U
 ClientSampled :
 BFSS5

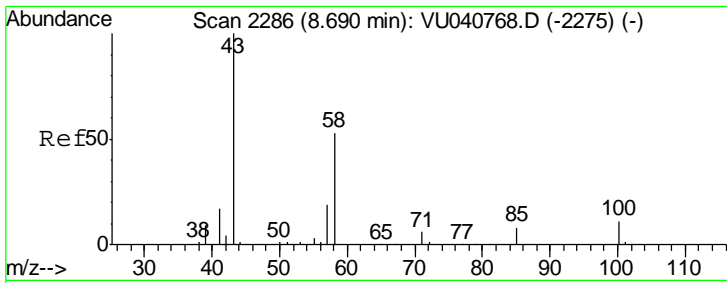
Tgt Ion: 75 Resp: 1497
 Ion Ratio Lower Upper
 75 100
 77 39.6 20.5 38.1#



#44
 trans-1,3-Dichloropropene
 Concen: 0.073 ug/L
 RT: 8.19 min Scan# 2129
 Delta R.T. -0.03 min
 Lab File: VU040771.D
 Acq: 17 Oct 2020 18:56

Tgt Ion: 75 Resp: 1005
 Ion Ratio Lower Upper
 75 100
 77 44.9 20.4 38.0#

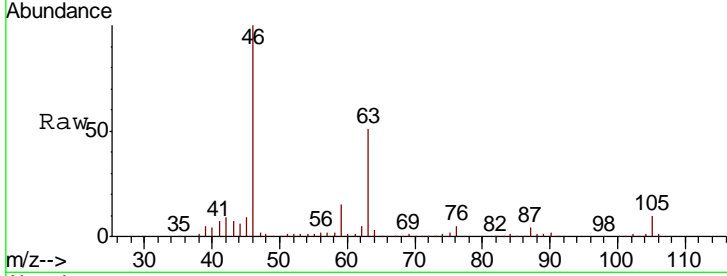




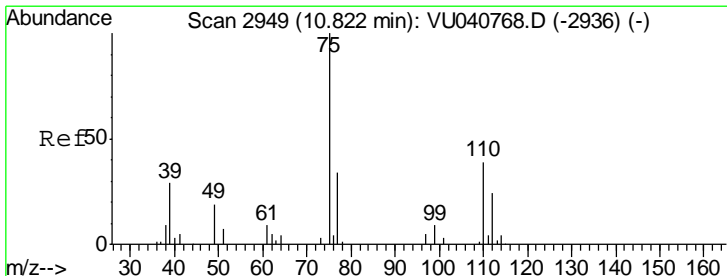
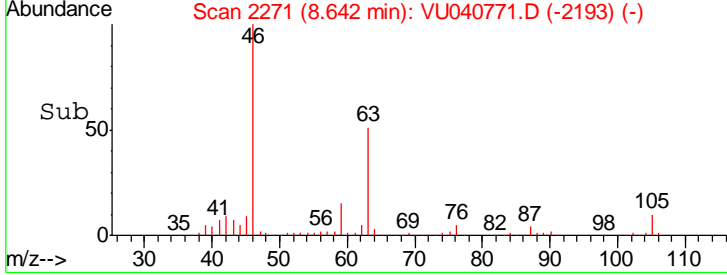
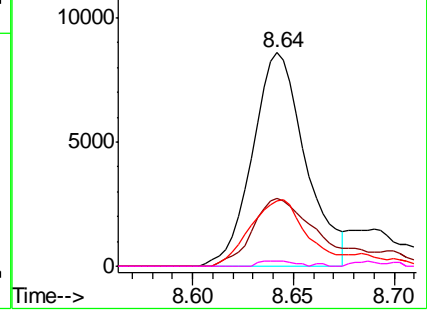
#48
 2-Hexanone
 Concen: 2.410 ug/L
 RT: 8.64 min Scan# 2271
 Delta R.T. -0.05 min
 Lab File: VU040771.D
 Acq: 17 Oct 2020 18:56

Instrument :
 MSVOA_U
 ClientSampled :
 BFSS5

Tgt Ion	Resp	Lower	Upper
43	15733		
58	39.8	41.0	61.6#
57	33.3	14.4	21.6#
100	1.7	8.6	13.0#

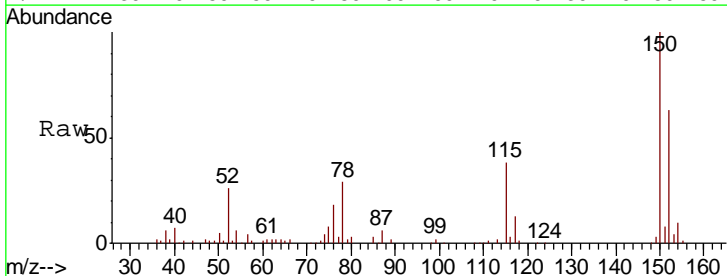


Abundance Ion 43.05 (42.75 to 43.75): VU0
 Ion 58.05 (57.75 to 58.75): VU0
 Ion 57.20 (56.90 to 57.90): VU0
 Ion 100.15 (99.85 to 100.85): VU0

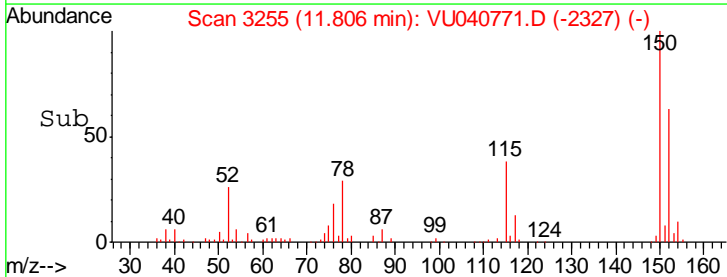
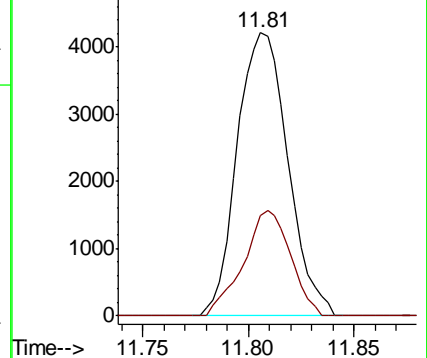


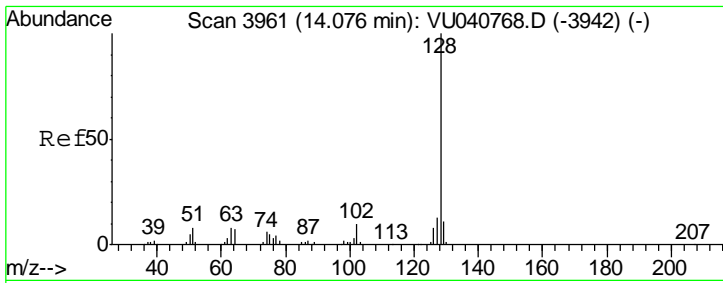
#59
 1,2,3-Trichloropropane
 Concen: 0.869 ug/L
 RT: 11.81 min Scan# 3255
 Delta R.T. 0.98 min
 Lab File: VU040771.D
 Acq: 17 Oct 2020 18:56

Tgt Ion	Resp	Lower	Upper
75	7021		
77	34.6	26.4	39.6



Abundance Ion 75.00 (74.70 to 75.70): VU0
 Ion 77.00 (76.70 to 77.70): VU0





#69
 Naphthalene
 Concen: 0.058 ug/L
 RT: 14.08 min Scan# 3963
 Delta R.T. 0.01 min
 Lab File: VU040771.D
 Acq: 17 Oct 2020 18:56

Instrument : MSVOA_U
 ClientSampled : BFSS5

Tot Ion	128	129	127
Resp:	878		
Ion Ratio	100	0.0	0.0
Lower		9.0	10.2
Upper		13.4#	15.4#

