

Data Path : Z:\VOASRV\HPCHEM1\MSVOA U\DATA\VU102120\
 Data File : VU040881.D
 Acq On : 21 Oct 2020 18:17
 Operator : SY/MD
 Sample : L4420-03
 Misc : 25.0mL/MSVOA U/WATER
 ALS Vial : 19 Sample Multiplier: 1

Instrument :
 MSVOA_U
 ClientSampleId :
 VHBLK01

Integration Parameters: rteint.p
 Integrator: RTE
 Smoothing : ON
 Sampling : 1
 Start Thrs: 0.1
 Stop Thrs : 0

Filtering: 5
 Min Area: 3 % of largest Peak
 Max Peaks: 100
 Peak Location: TOP

If leading or trailing edge < 100 prefer < Baseline drop else tangent >
 Peak separation: 5

Method : Z:\VOASRV\HPCHEM1\MSVOA_U\METHOD\SOMUTR102120WMA.M
 Title : TRACE VOA SOM01.0

Signal : TIC

peak #	R.T. min	first scan	max scan	last scan	PK TY	peak height	corr. area	corr. % max.	% of total
1	1.607	75	83	97	rVB	114862	129609	9.83%	1.626%
2	1.922	173	181	191	rVB	97268	124416	9.43%	1.561%
3	2.581	373	386	407	rBV	187610	312024	23.65%	3.914%
4	4.649	1009	1029	1062	rBV2	195455	536125	40.64%	6.725%
5	5.083	1148	1164	1182	rBV	182758	403656	30.60%	5.063%
6	5.742	1343	1369	1388	rBV2	344515	905633	68.65%	11.360%
7	6.263	1513	1531	1551	rBV	296690	557264	42.24%	6.990%
8	6.703	1653	1668	1685	rBV	229134	444112	33.67%	5.571%
9	7.575	1920	1939	1957	rBV2	108781	189404	14.36%	2.376%
10	7.906	2028	2042	2057	rBV	362260	621560	47.12%	7.797%
11	8.186	2117	2129	2145	rBV	74326	127204	9.64%	1.596%
12	8.639	2257	2270	2300	rBV	751841	1319149	100.00%	16.547%
13	9.420	2499	2513	2531	rBV	451602	739430	56.05%	9.275%
14	10.755	2916	2928	2943	rBV2	195035	317009	24.03%	3.976%
15	11.806	3243	3255	3270	rBV2	398263	625362	47.41%	7.844%
16	12.189	3359	3374	3390	rBV	380609	620160	47.01%	7.779%

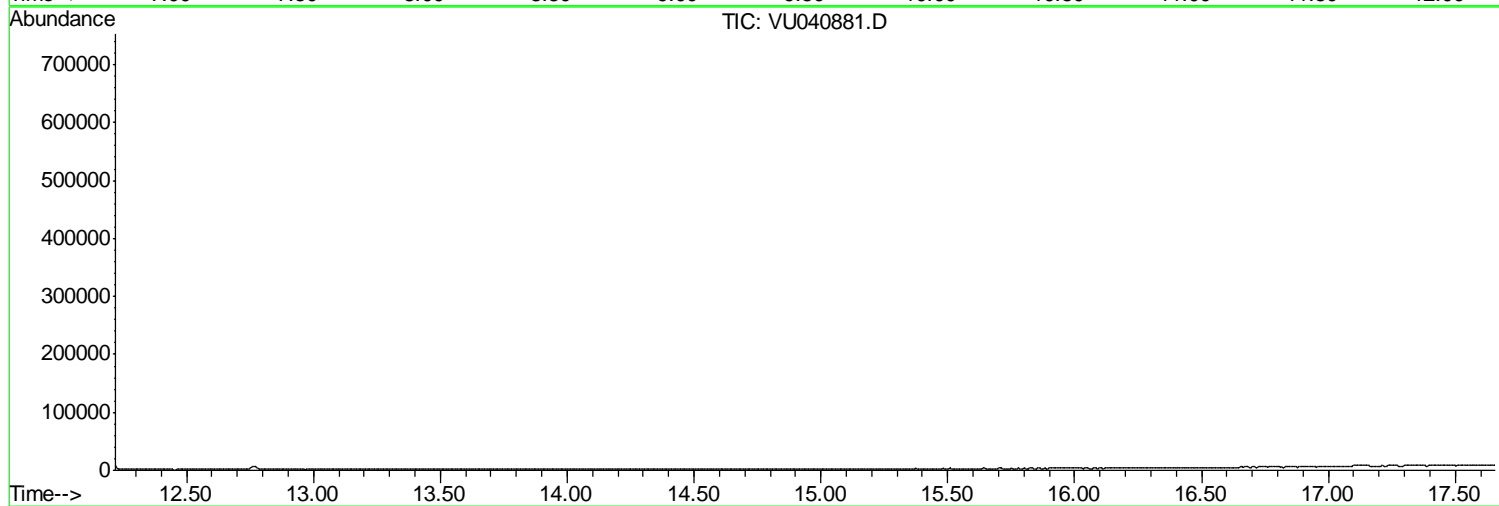
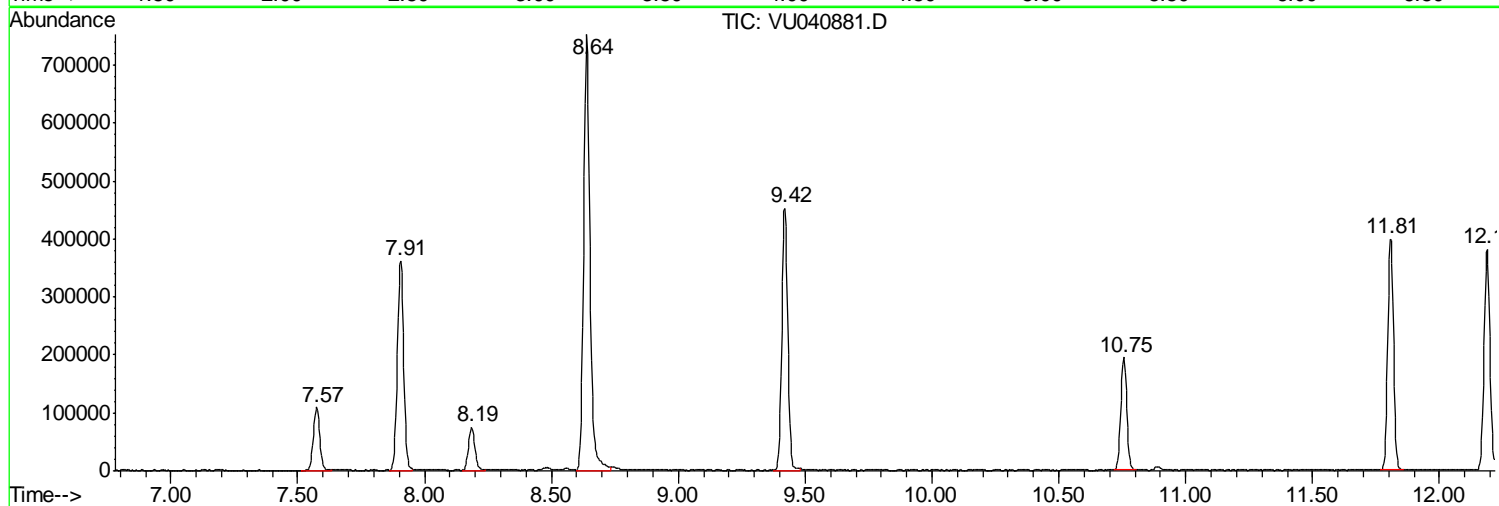
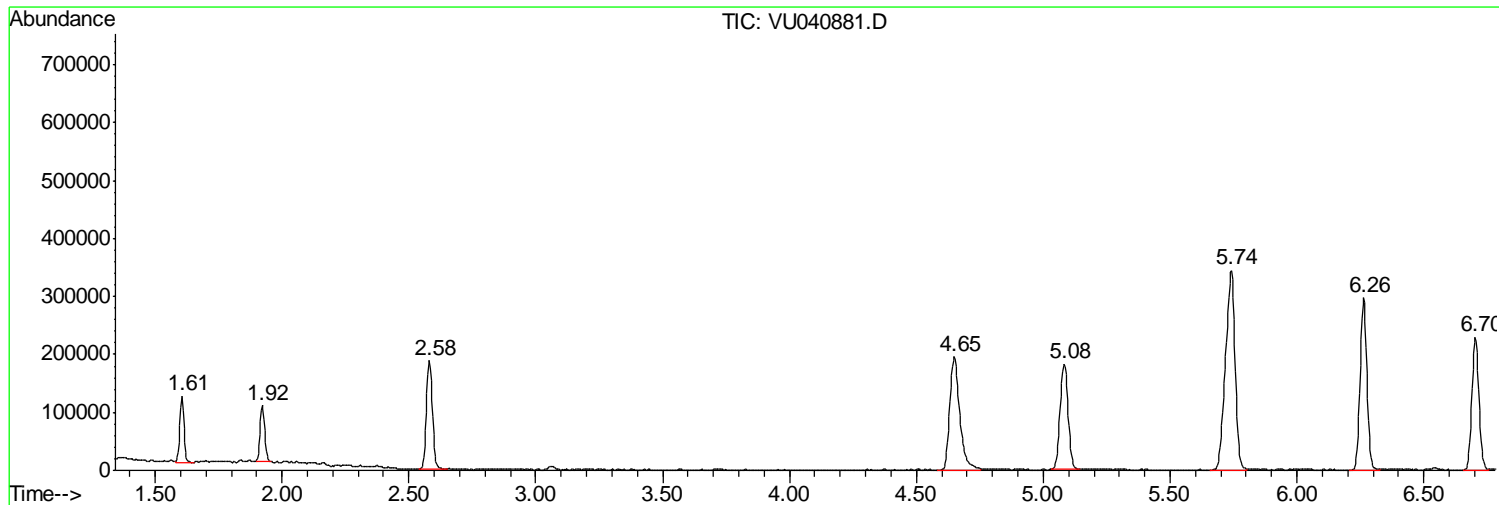
Sum of corrected areas: 7972117

Data Path : Z:\VOASRV\HPCHEM1\MSVOA U\DATA\VU102120\
Data File : VU040881.D
Acq On : 21 Oct 2020 18:17
Operator : SY/MD
Sample : L4420-03
Misc : 25.0mL/MSVOA U/WATER
ALS Vial : 19 Sample Multiplier: 1

Instrument :
MSVOA_U
ClientSampled :
VHBLK01

Quant Method : Z:\VOASRV\HPCHEM1\MSVOA_U\METHOD\SOMUTR102120WMA.M
Quant Title : TRACE VOA SOM01.0

TIC Library : C:\DATABASE\NIST11.L
TIC Integration Parameters: LSCINT.P



Data Path : Z:\VOASRV\HPCHEM1\MSVOA_U\DATA\VU102120\
Data File : VU040881.D
Acq On : 21 Oct 2020 18:17
Operator : SY/MD
Sample : L4420-03
Misc : 25.0mL/MSVOA_U/WATER
ALS Vial : 19 Sample Multiplier: 1

Instrument :
MSVOA_U
ClientSampleId :
VHBLK01

Quant Method : Z:\VOASRV\HPCHEM1\MSVOA_U\METHOD\SOMUTR102120WMA.M
Quant Title : TRACE VOA SOM01.0

TIC Library : C:\DATABASE\NIST11.L
TIC Integration Parameters: LSCINT.P

No Library Search Compounds Detected

Data Path : Z:\VOASRV\HPCHEM1\MSVOA_U\DATA\VU102120\
Data File : VU040881.D
Acq On : 21 Oct 2020 18:17
Operator : SY/MD
Sample : L4420-03
Misc : 25.0mL/MSVOA_U/WATER
ALS Vial : 19 Sample Multiplier: 1

Instrument :
MSVOA_U
ClientSampleId :
VHBLK01

Quant Method : Z:\VOASRV\HPCHEM1\MSVOA_U\METHOD\SOMUTR102120WMA.M
Quant Title : TRACE VOA SOM01.0

TIC Library : C:\DATABASE\NIST11.L
TIC Integration Parameters: LSCINT.P

TIC Top Hit name	RT	EstConc	Units	Response	--Internal Standard--			
					#	RT	Resp	Conc
