

Data Path : Z:\VOASRV\HPCHEM1\MSVOA U\DATA\VU102219\
 Data File : VU035331.D
 Acq On : 21 Oct 2019 19:41
 Operator : JC/SP
 Sample : K5421-03
 Misc : 25.0mL/MSVOA U/WATER
 ALS Vial : 8 Sample Multiplier: 1

Instrument :
 MSVOA_U
 ClientSampleId :
 C0AA2

Quant Time: Oct 22 07:11:11 2019
 Quant Method : Z:\VOASRV\HPCHEM1\MSVOA_U\METHOD\SOMUTR101719WMA.M
 Quant Title : TRACE VOA SOM01.0
 QLast Update : Tue Oct 22 06:40:31 2019
 Response via : Initial Calibration

Internal Standards	R.T.	QIon	Response	Conc	Units	Dev(Min)
1) 1,4-Difluorobenzene	6.29	114	312193	5.00	ug/L	0.00
28) Chlorobenzene-d5	9.45	117	304911	5.00	ug/L	0.00
60) 1,4-Dichlorobenzene-d4	11.84	152	116121	5.00	ug/L	0.00

System Monitoring Compounds

4) Vinyl Chloride-d3	1.62	65	85323	4.48	ug/L	0.00
Spiked Amount	5.000	Range	40 - 130	Recovery	=	89.60%
7) Chloroethane-d5	1.94	69	84879	4.88	ug/L	0.00
Spiked Amount	5.000	Range	65 - 130	Recovery	=	97.60%
11) 1,1-Dichloroethene-d2	2.59	63	121399	3.45	ug/L	0.00
Spiked Amount	5.000	Range	60 - 125	Recovery	=	69.00%
20) 2-Butanone-d5	4.70	46	262179	47.93	ug/L	0.00
Spiked Amount	50.000	Range	40 - 130	Recovery	=	95.86%
24) Chloroform-d	5.11	84	175916	5.06	ug/L	0.00
Spiked Amount	5.000	Range	70 - 125	Recovery	=	101.20%
26) 1,2-Dichloroethane-d4	5.75	65	95280	4.94	ug/L	0.00
Spiked Amount	5.000	Range	70 - 130	Recovery	=	98.80%
32) Benzene-d6	5.77	84	343136	4.92	ug/L	0.00
Spiked Amount	5.000	Range	70 - 125	Recovery	=	98.40%
36) 1,2-Dichloropropane-d6	6.74	67	114100	5.15	ug/L	0.00
Spiked Amount	5.000	Range	60 - 140	Recovery	=	103.00%
41) Toluene-d8	7.93	98	303981	4.56	ug/L	0.00
Spiked Amount	5.000	Range	70 - 130	Recovery	=	91.20%
43) trans-1,3-Dichloropropene-	8.22	79	43629	4.06	ug/L	0.00
Spiked Amount	5.000	Range	55 - 130	Recovery	=	81.20%
46) 2-Hexanone-d5	8.69	63	215291	45.43	ug/L	0.00
Spiked Amount	50.000	Range	45 - 130	Recovery	=	90.86%
57) 1,1,2,2-Tetrachloroethane-	10.79	84	94486	4.79	ug/L	0.00
Spiked Amount	5.000	Range	65 - 120	Recovery	=	95.80%
64) 1,2-Dichlorobenzene-d4	12.22	152	101897	4.82	ug/L	0.00
Spiked Amount	5.000	Range	80 - 120	Recovery	=	96.40%

Target Compounds

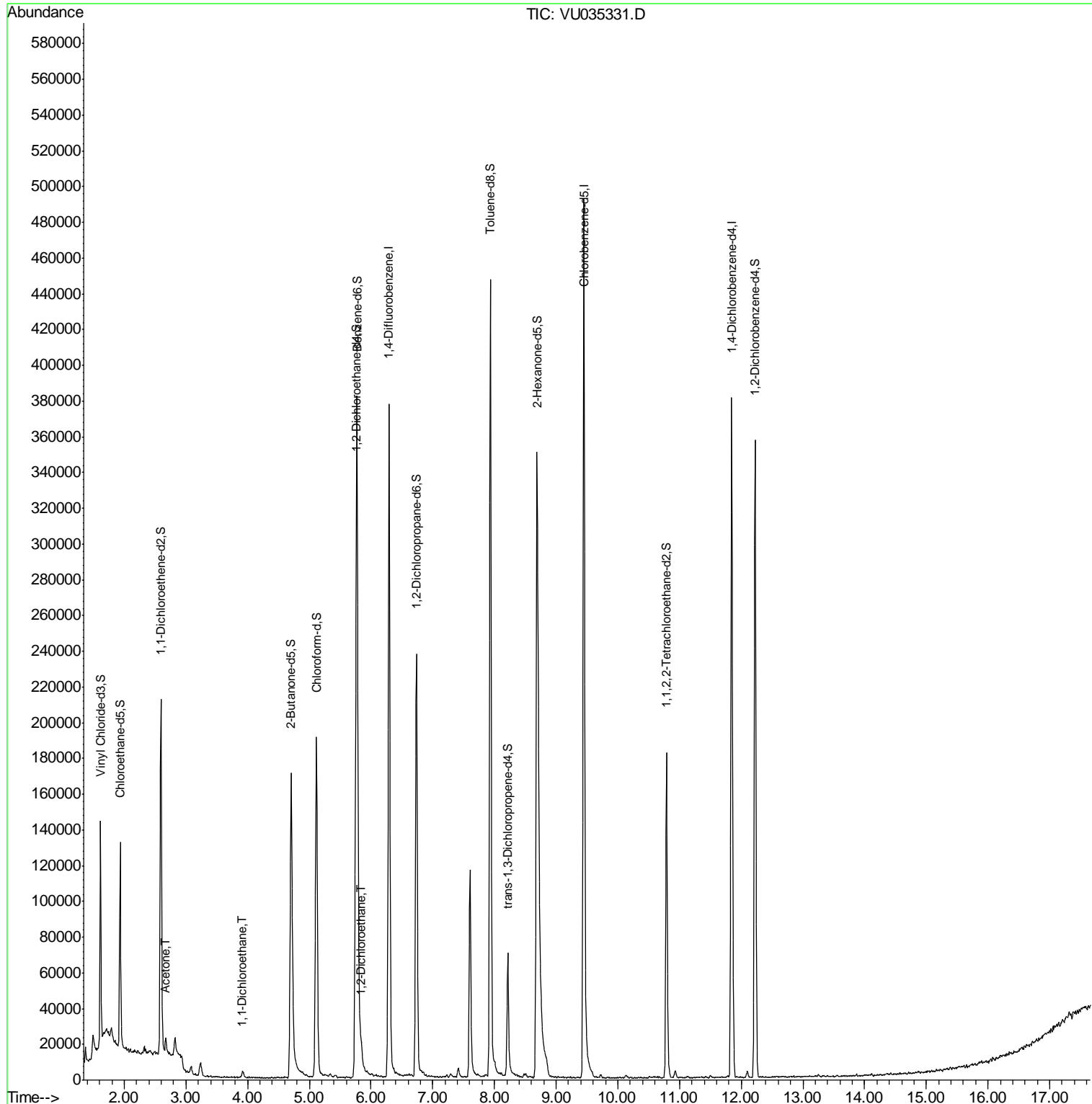
Target Compounds	R.T.	QIon	Response	Conc	Units	Ovalue
13) Acetone	2.67	43	9051	2.379	ug/L	95
19) 1,1-Dichloroethane	3.92	63	4255	0.109	ug/L	96
27) 1,2-Dichloroethane	5.85	62	5713	0.217	ug/L	99

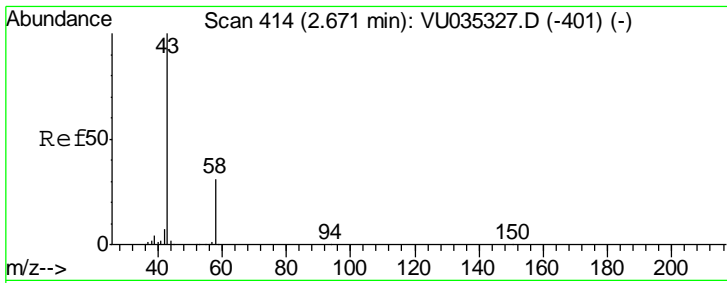
(#) = qualifier out of range (m) = manual integration (+) = signals summed

Data Path : Z:\VOASRV\HPCHEM1\MSVOA U\DATA\VU102219\
 Data File : VU035331.D
 Acq On : 21 Oct 2019 19:41
 Operator : JC/SP
 Sample : K5421-03
 Misc : 25.0mL/MSVOA U/WATER
 ALS Vial : 8 Sample Multiplier: 1

Instrument :
 MSVOA_U
 Client Sampled :
 C0AA2

Quant Time: Oct 22 07:11:11 2019
 Quant Method : Z:\VOASRV\HPCHEM1\MSVOA_U\METHOD\SOMUTR101719WMA.M
 Quant Title : TRACE VOA SOM01.0
 QLast Update : Tue Oct 22 06:40:31 2019
 Response via : Initial Calibration

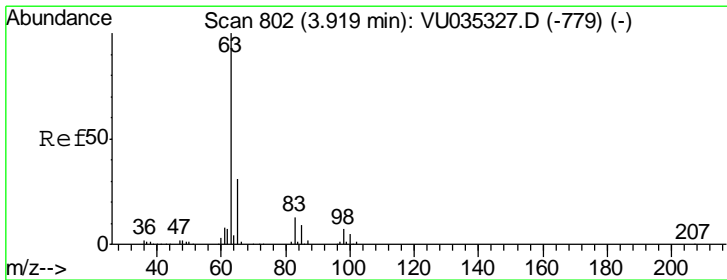
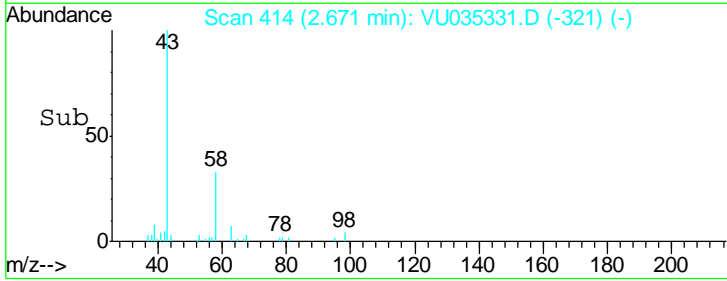
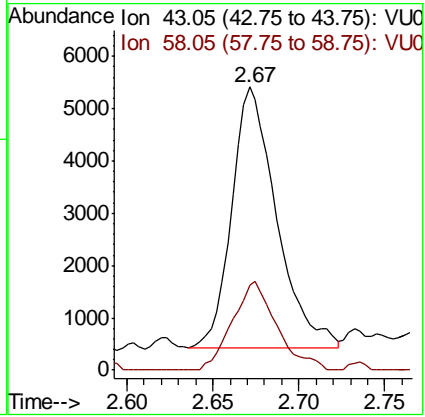
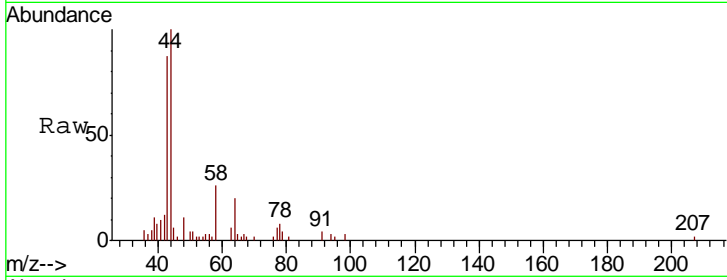




#13
 Acetone
 Concen: 2.379 ug/L
 RT: 2.67 min Scan# 414
 Delta R.T. 0.00 min
 Lab File: VU035331.D
 Acq: 21 Oct 2019 19:41

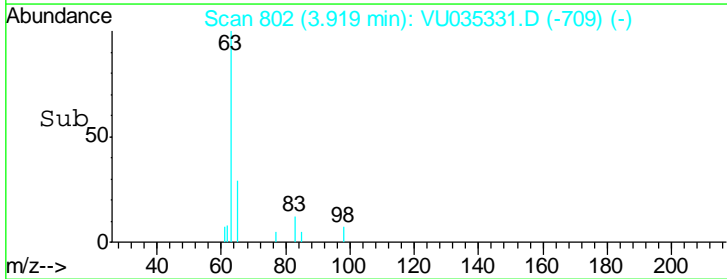
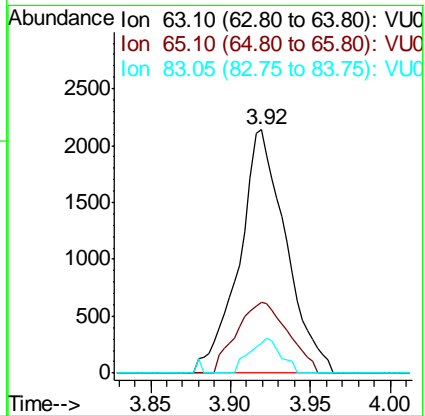
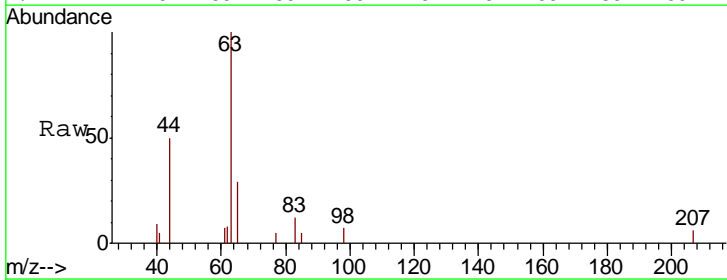
Instrument :
 MSVOA_U
ClientSampled :
 C0AA2

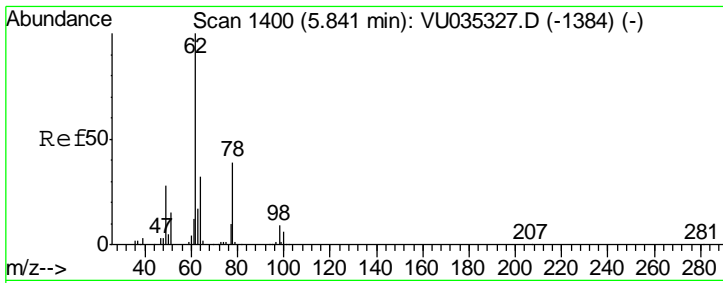
Tgt Ion	Resp	Lower	Upper
43	100		
58	33.7	0.0	61.8



#19
 1,1-Dichloroethane
 Concen: 0.109 ug/L
 RT: 3.92 min Scan# 802
 Delta R.T. 0.00 min
 Lab File: VU035331.D
 Acq: 21 Oct 2019 19:41

Tgt Ion	Resp	Lower	Upper
63	100		
65	29.0	22.4	41.6
83	12.5	9.3	17.3





#27
 1,2-Dichloroethane
 Concen: 0.217 ug/L
 RT: 5.85 min Scan# 1402
 Delta R.T. 0.01 min
 Lab File: VU035331.D
 Acq: 21 Oct 2019 19:41

Instrument :
 MSVOA_U
 ClientSampleId :
 C0AA2

Tot Ion: 62 Resp: 5713
 Ion Ratio Lower Upper
 62 100
 98 10.0 7.8 11.6

