

Data Path : Z:\VOASRV\HPCHEM1\MSVOA U\DATA\VU102219\
 Data File : VU035342.D
 Acq On : 22 Oct 2019 00:13
 Operator : JC/SP
 Sample : K5458-03
 Misc : 25.0mL/MSVOA U/WATER
 ALS Vial : 19 Sample Multiplier: 1

Instrument :
 MSVOA_U
 ClientSampled :
 C0K27

Integration Parameters: rteint.p
 Integrator: RTE
 Smoothing : ON Filtering: 5
 Sampling : 1 Min Area: 3 % of largest Peak
 Start Thrs: 0.1 Max Peaks: 100
 Stop Thrs : 0 Peak Location: TOP

If leading or trailing edge < 100 prefer < Baseline drop else tangent >
 Peak separation: 5

Method : Z:\VOASRV\HPCHEM1\MSVOA_U\METHOD\SOMUTR101719WMA.M
 Title : TRACE VOA SOM01.0

Signal : TIC

peak #	R.T. min	first scan	max scan	last scan	PK TY	peak height	corr. area	corr. % max.	% of total
1	1.517	38	55	80	rBV	632845	2975062	100.00%	23.663%
2	1.616	82	86	93	rVB2	183952	232010	7.80%	1.845%
3	1.935	180	185	228	rVB2	212088	502143	16.88%	3.994%
4	2.597	381	391	406	rVB	259565	416219	13.99%	3.310%
5	2.819	453	460	474	rVB2	35471	63888	2.15%	0.508%
6	4.706	1031	1047	1077	rBV	182323	486989	16.37%	3.873%
7	5.115	1157	1174	1199	rBV	213700	466223	15.67%	3.708%
8	5.771	1357	1378	1406	rBV2	438682	1114617	37.47%	8.865%
9	6.295	1527	1541	1560	rBV	344537	661631	22.24%	5.262%
10	6.584	1616	1631	1649	rBV3	68665	133078	4.47%	1.058%
11	6.735	1663	1678	1701	rBV	268188	530640	17.84%	4.221%
12	7.607	1936	1949	1973	rBV	128801	238491	8.02%	1.897%
13	7.935	2033	2051	2070	rBV	522138	932126	31.33%	7.414%
14	8.217	2127	2139	2168	rVB	76573	138826	4.67%	1.104%
15	8.687	2268	2285	2325	rBV	416055	1146517	38.54%	9.119%
16	9.449	2509	2522	2550	rBV	463159	837317	28.14%	6.660%
17	10.787	2923	2938	2961	rVB	196090	336585	11.31%	2.677%
18	11.844	3252	3267	3286	rBV	352435	653005	21.95%	5.194%
19	12.224	3372	3385	3405	rBV	401942	707416	23.78%	5.627%

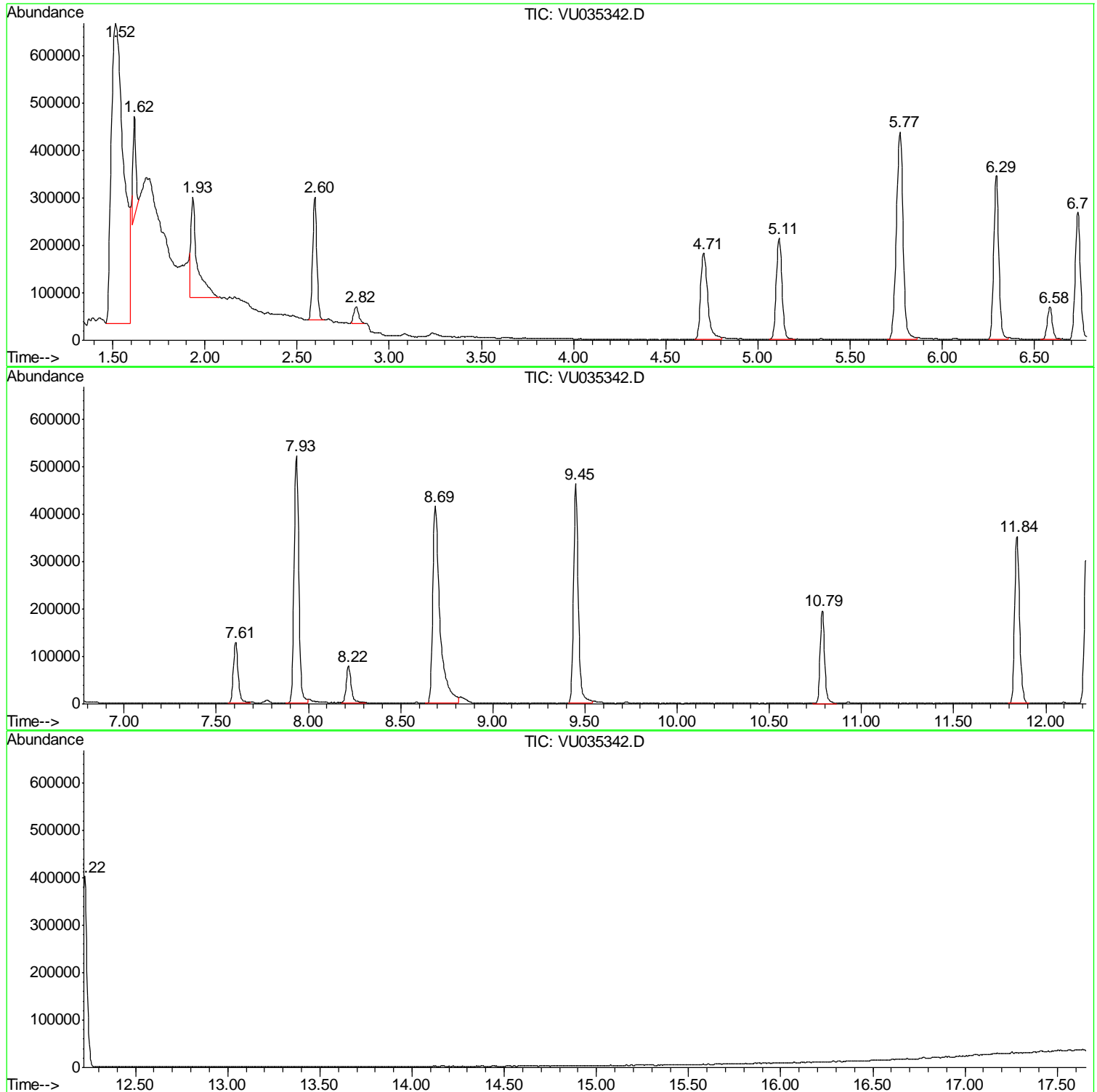
Sum of corrected areas: 12572783

Data Path : Z:\VOASRV\HPCHEM1\MSVOA U\DATA\VU102219\
Data File : VU035342.D
Acq On : 22 Oct 2019 00:13
Operator : JC/SP
Sample : K5458-03
Misc : 25.0mL/MSVOA U/WATER
ALS Vial : 19 Sample Multiplier: 1

Instrument :
MSVOA_U
ClientSampled :
C0K27

Quant Method : Z:\VOASRV\HPCHEM1\MSVOA_U\METHOD\SOMUTR101719WMA.M
Quant Title : TRACE VOA SOM01.0

TIC Library : C:\DATABASE\NIST11.L
TIC Integration Parameters: LSCINT.P



Data Path : Z:\VOASRV\HPCHEM1\MSVOA U\DATA\VU102219\
 Data File : VU035342.D
 Acq On : 22 Oct 2019 00:13
 Operator : JC/SP
 Sample : K5458-03
 Misc : 25.0mL/MSVOA U/WATER
 ALS Vial : 19 Sample Multiplier: 1

Instrument :
 MSVOA_U
 ClientSampleID :
 C0K27

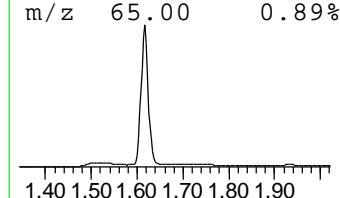
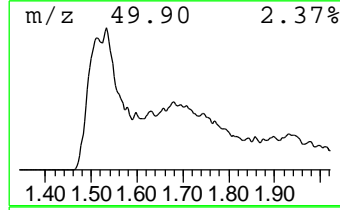
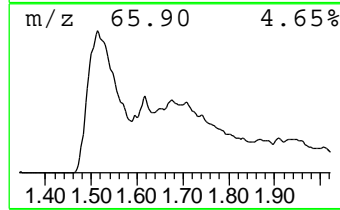
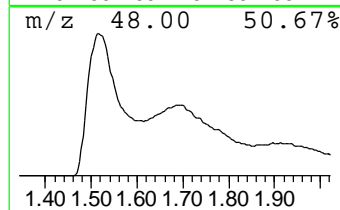
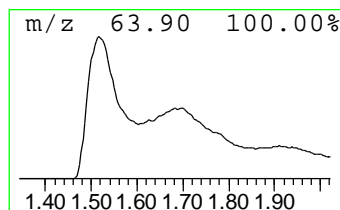
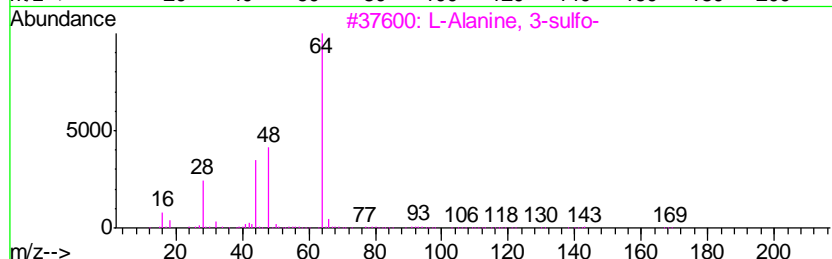
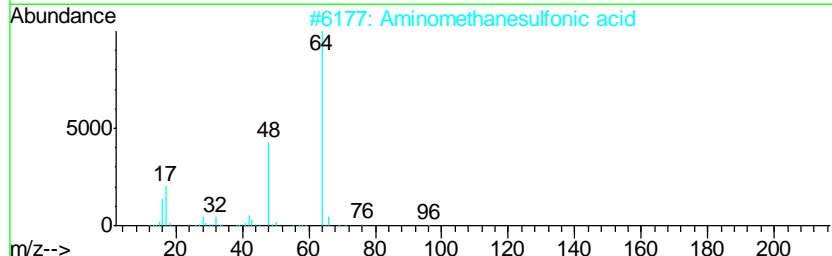
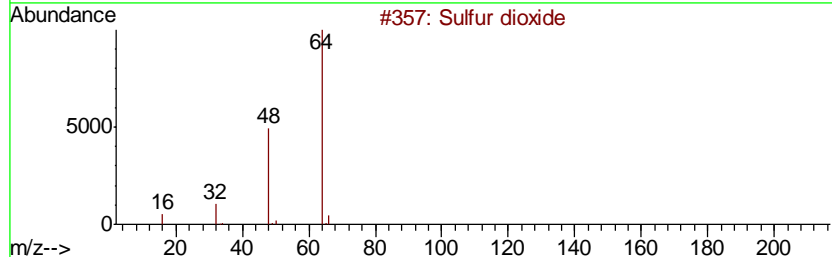
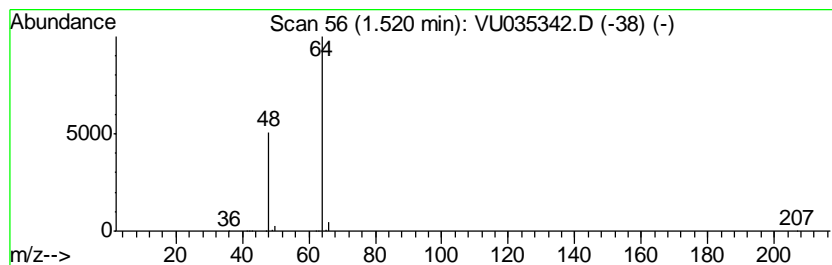
Quant Method : Z:\VOASRV\HPCHEM1\MSVOA_U\METHOD\SOMUTR101719WMA.M
 Quant Title : TRACE VOA SOM01.0

TIC Library : C:\DATABASE\NIST11.L
 TIC Integration Parameters: LSCINT.P

 Peak Number 1 Sulfur dioxide Concentration Rank 1

R.T.	EstConc	Area	Relative to ISTD	R.T.
1.52	22.48 ug/L	2975060	1,4-Difluorobenzene	6.29

Hit#	of	Tentative ID	MW	MolForm	CAS#	Qual
1	5	Sulfur dioxide	64	O2S	007446-09-5	83
2		Aminomethanesulfonic acid	111	CH5NO3S	013881-91-9	74
3		L-Alanine, 3-sulfo-	169	C3H7NO5S	000498-40-8	9
4		Aminomethanesulfonic acid	111	CH5NO3S	013881-91-9	9
5		Ethene, 1,1-difluoro-	64	C2H2F2	000075-38-7	4



Data Path : Z:\VOASRV\HPCHEM1\MSVOA_U\DATA\VU102219\
Data File : VU035342.D
Acq On : 22 Oct 2019 00:13
Operator : JC/SP
Sample : K5458-03
Misc : 25.0mL/MSVOA_U/WATER
ALS Vial : 19 Sample Multiplier: 1

Instrument :
MSVOA_U
ClientSampleId :
C0K27

Quant Method : Z:\VOASRV\HPCHEM1\MSVOA_U\METHOD\SOMUTR101719WMA.M
Quant Title : TRACE VOA SOM01.0

TIC Library : C:\DATABASE\NIST11.L
TIC Integration Parameters: LSCINT.P

TIC Top Hit name	RT	EstConc	Units	Response	--Internal Standard--			
					#	RT	Resp	Conc
Sulfur dioxide	1.52	22.5	ug/L	2975060	1	6.29	661631	5.0