

Data Path : Z:\VOASRV\HPCHEM1\MSVOA U\DATA\VU102319\
 Data File : VU035400.D
 Acq On : 23 Oct 2019 10:49
 Operator : JC/SP
 Sample : VU1023WBL01
 Misc : 25.0mL/MSVOA U/WATER
 ALS Vial : 3 Sample Multiplier: 1

Instrument :
 MSVOA_U
 ClientSampled :
 VBLK02

Integration Parameters: rteint.p
 Integrator: RTE
 Smoothing : ON
 Sampling : 1
 Start Thrs: 0.1
 Stop Thrs : 0

Filtering: 5
 Min Area: 3 % of largest Peak
 Max Peaks: 100
 Peak Location: TOP

If leading or trailing edge < 100 prefer < Baseline drop else tangent >
 Peak separation: 5

Method : Z:\VOASRV\HPCHEM1\MSVOA_U\METHOD\SOMUTR101719WMA.M
 Title : TRACE VOA SOM01.0

Signal : TIC

peak #	R.T. min	first scan	max scan	last scan	PK TY	peak height	corr. area	corr. % max.	% of total
1	1.613	77	85	97	rBV	124305	137908	15.11%	1.871%
2	1.932	176	184	197	rVB	113114	145966	16.00%	1.980%
3	2.594	378	390	411	rBV	187659	306199	33.56%	4.154%
4	3.083	534	542	554	rVB3	7792	14661	1.61%	0.199%
5	3.231	579	588	598	rBV4	6140	11985	1.31%	0.163%
6	4.719	1030	1051	1095	rBV2	134242	445215	48.79%	6.040%
7	5.115	1157	1174	1196	rBV	165914	376841	41.30%	5.112%
8	5.771	1355	1378	1412	rBV2	331372	840385	92.10%	11.401%
9	6.292	1526	1540	1562	rBV	320699	621508	68.11%	8.432%
10	6.735	1664	1678	1700	rBV	209849	414194	45.39%	5.619%
11	7.607	1936	1949	1975	rBV2	96397	183508	20.11%	2.490%
12	7.935	2037	2051	2070	rBV	358861	646600	70.86%	8.772%
13	8.217	2122	2139	2171	rBV2	59563	116222	12.74%	1.577%
14	8.687	2271	2285	2321	rBV	386289	912495	100.00%	12.379%
15	8.970	2361	2373	2382	rBV3	8842	19977	2.19%	0.271%
16	9.449	2509	2522	2552	rBV	433416	781371	85.63%	10.601%
17	10.787	2926	2938	2963	rVB	160170	271249	29.73%	3.680%
18	11.841	3253	3266	3287	rBV	324158	598276	65.56%	8.117%
19	12.221	3372	3384	3402	rBV	291947	526478	57.70%	7.143%

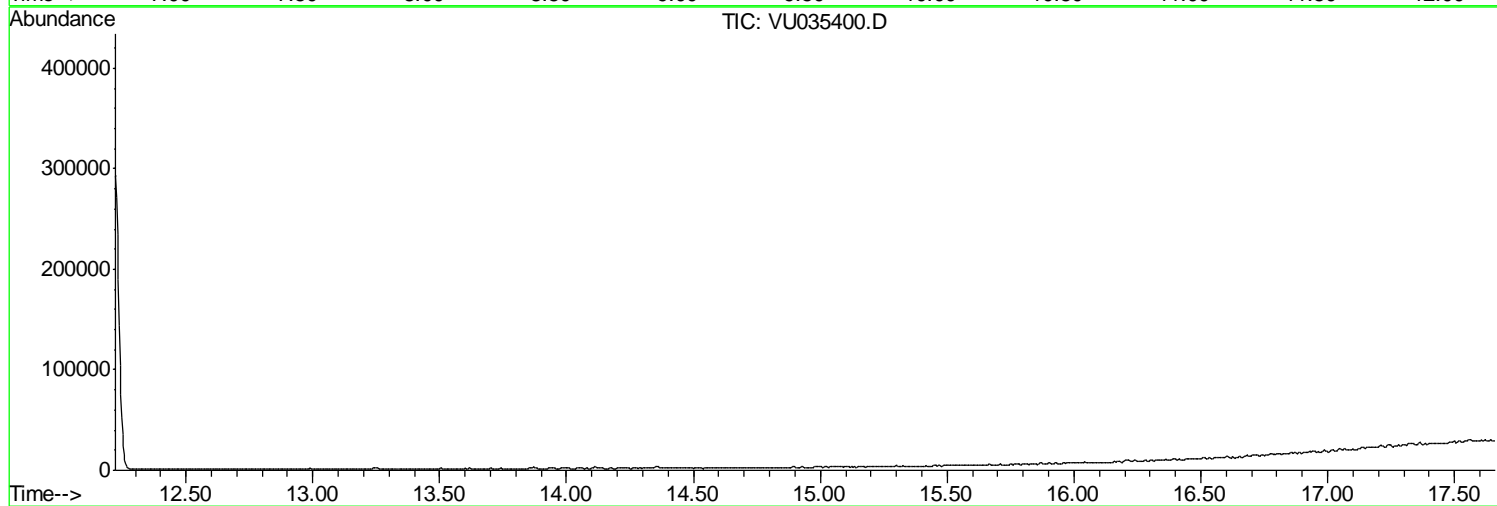
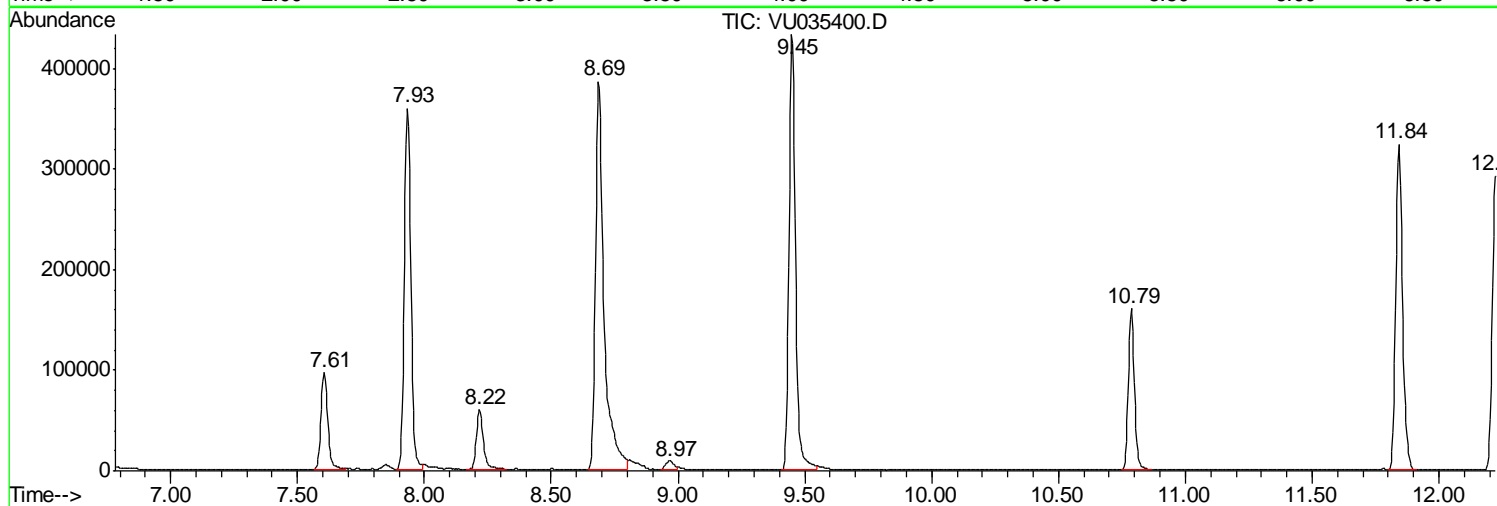
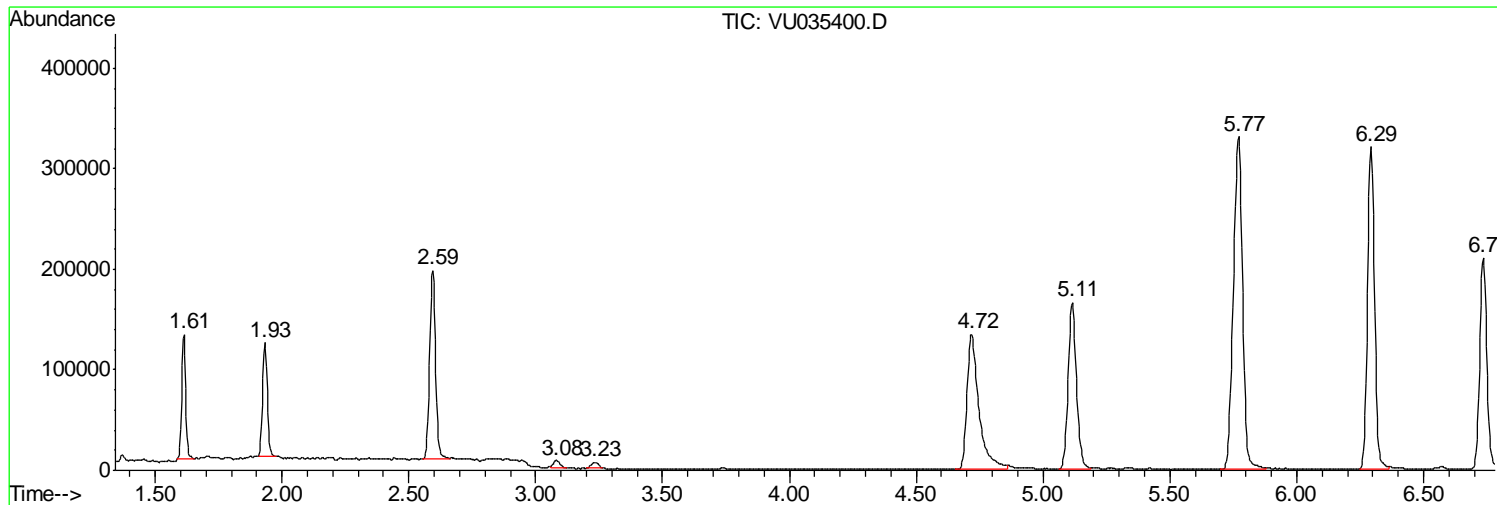
Sum of corrected areas: 7371038

Data Path : Z:\VOASRV\HPCHEM1\MSVOA U\DATA\VU102319\
Data File : VU035400.D
Acq On : 23 Oct 2019 10:49
Operator : JC/SP
Sample : VU1023WBL01
Misc : 25.0mL/MSVOA U/WATER
ALS Vial : 3 Sample Multiplier: 1

Instrument :
MSVOA_U
ClientSampled :
VBLK02

Quant Method : Z:\VOASRV\HPCHEM1\MSVOA_U\METHOD\SOMUTR101719WMA.M
Quant Title : TRACE VOA SOM01.0

TIC Library : C:\DATABASE\NIST11.L
TIC Integration Parameters: LSCINT.P



Data Path : Z:\VOASRV\HPCHEM1\MSVOA_U\DATA\VU102319\
Data File : VU035400.D
Acq On : 23 Oct 2019 10:49
Operator : JC/SP
Sample : VU1023WBL01
Misc : 25.0mL/MSVOA_U/WATER
ALS Vial : 3 Sample Multiplier: 1

Instrument :
MSVOA_U
ClientSampleId :
VBLK02

Quant Method : Z:\VOASRV\HPCHEM1\MSVOA_U\METHOD\SOMUTR101719WMA.M
Quant Title : TRACE VOA SOM01.0

TIC Library : C:\DATABASE\NIST11.L
TIC Integration Parameters: LSCINT.P

No Library Search Compounds Detected

Data Path : Z:\VOASRV\HPCHEM1\MSVOA_U\DATA\VU102319\
Data File : VU035400.D
Acq On : 23 Oct 2019 10:49
Operator : JC/SP
Sample : VU1023WBL01
Misc : 25.0mL/MSVOA_U/WATER
ALS Vial : 3 Sample Multiplier: 1

Instrument :
MSVOA_U
ClientSampleId :
VBLK02

Quant Method : Z:\VOASRV\HPCHEM1\MSVOA_U\METHOD\SOMUTR101719WMA.M
Quant Title : TRACE VOA SOM01.0

TIC Library : C:\DATABASE\NIST11.L
TIC Integration Parameters: LSCINT.P

TIC Top Hit name	RT	EstConc	Units	Response	--Internal Standard--			
					#	RT	Resp	Conc
