

Data Path : Z:\VOASRV\HPCHEM1\MSVOA U\DATA\VU102319\
 Data File : VU035401.D
 Acq On : 23 Oct 2019 11:19
 Operator : JC/SP
 Sample : K5458-07
 Misc : 25.0mL/MSVOA U/WATER
 ALS Vial : 4 Sample Multiplier: 1

Instrument :
 MSVOA_U
 ClientSampled :
 C0K31

Integration Parameters: rteint.p
 Integrator: RTE
 Smoothing : ON
 Sampling : 1
 Start Thrs: 0.1
 Stop Thrs : 0

Filtering: 5
 Min Area: 3 % of largest Peak
 Max Peaks: 100
 Peak Location: TOP

If leading or trailing edge < 100 prefer < Baseline drop else tangent >
 Peak separation: 5

Method : Z:\VOASRV\HPCHEM1\MSVOA_U\METHOD\SOMUTR101719WMA.M
 Title : TRACE VOA SOM01.0

Signal : TIC

peak #	R.T. min	first scan	max scan	last scan	PK TY	peak height	corr. area	corr. % max.	% of total
1	1.495	39	48	58	rBV2	9999	24614	1.65%	0.238%
2	1.617	79	86	101	rVB	91021	102528	6.86%	0.992%
3	1.935	177	185	197	rVB	91240	121129	8.11%	1.172%
4	2.601	379	392	407	rBV3	264560	524492	35.10%	5.073%
5	2.819	448	460	477	rBV	80103	162901	10.90%	1.576%
6	3.231	574	588	604	rBV2	10886	26631	1.78%	0.258%
7	3.922	788	803	817	rBV	7418	17291	1.16%	0.167%
8	4.710	1030	1048	1087	rBV3	226154	658385	44.06%	6.368%
9	5.112	1158	1173	1195	rBV	159763	367986	24.63%	3.559%
10	5.363	1237	1251	1265	rBV3	11528	26518	1.77%	0.256%
11	5.771	1357	1378	1404	rBV2	314505	808842	54.13%	7.824%
12	6.292	1525	1540	1565	rBV	296307	581338	38.90%	5.623%
13	6.581	1615	1630	1656	rBV	662069	1280514	85.69%	12.386%
14	6.732	1664	1677	1699	rVB	205014	400899	26.83%	3.878%
15	7.604	1931	1948	1977	rBV	94124	180208	12.06%	1.743%
16	7.774	1992	2001	2013	rVB4	9337	16424	1.10%	0.159%
17	7.935	2037	2051	2071	rBV	342103	617272	41.31%	5.971%
18	8.215	2128	2138	2164	rBV	54646	105008	7.03%	1.016%
19	8.584	2239	2253	2272	rBV	868020	1494319	100.00%	14.454%
20	8.687	2273	2285	2328	rVV	245934	870170	58.23%	8.417%
21	9.449	2506	2522	2557	rBV	389653	745268	49.87%	7.209%
22	10.787	2925	2938	2963	rBV	151952	276345	18.49%	2.673%
23	11.848	3255	3268	3287	rBV2	243425	482093	32.26%	4.663%
24	12.224	3372	3385	3401	rBV	245052	447317	29.93%	4.327%

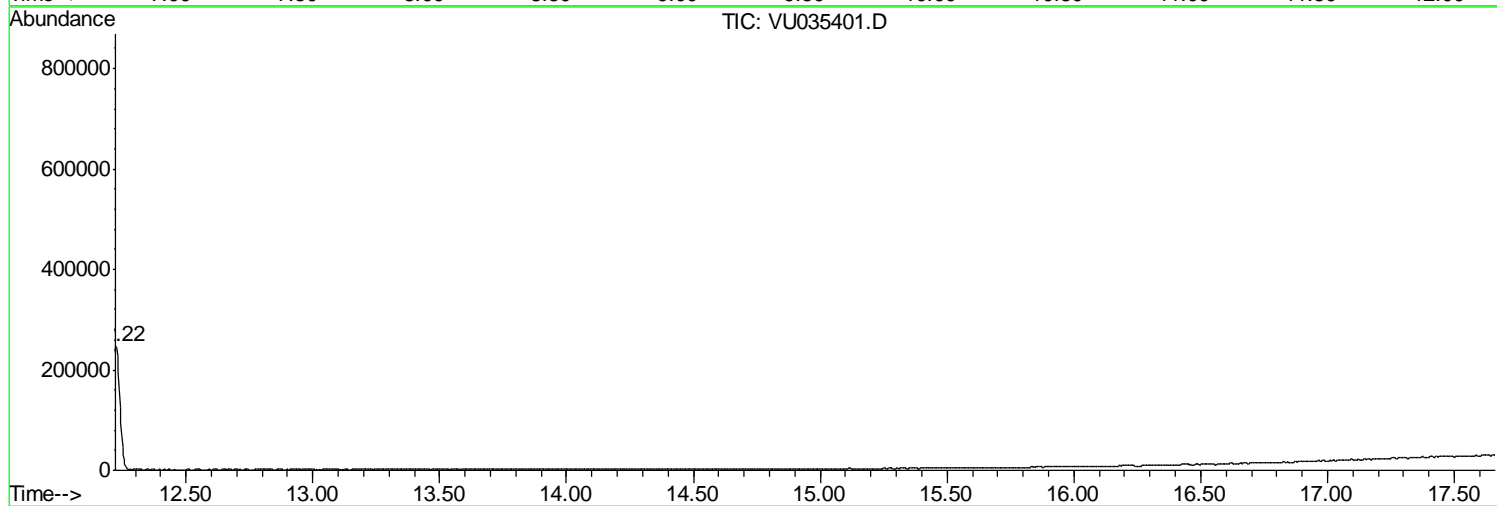
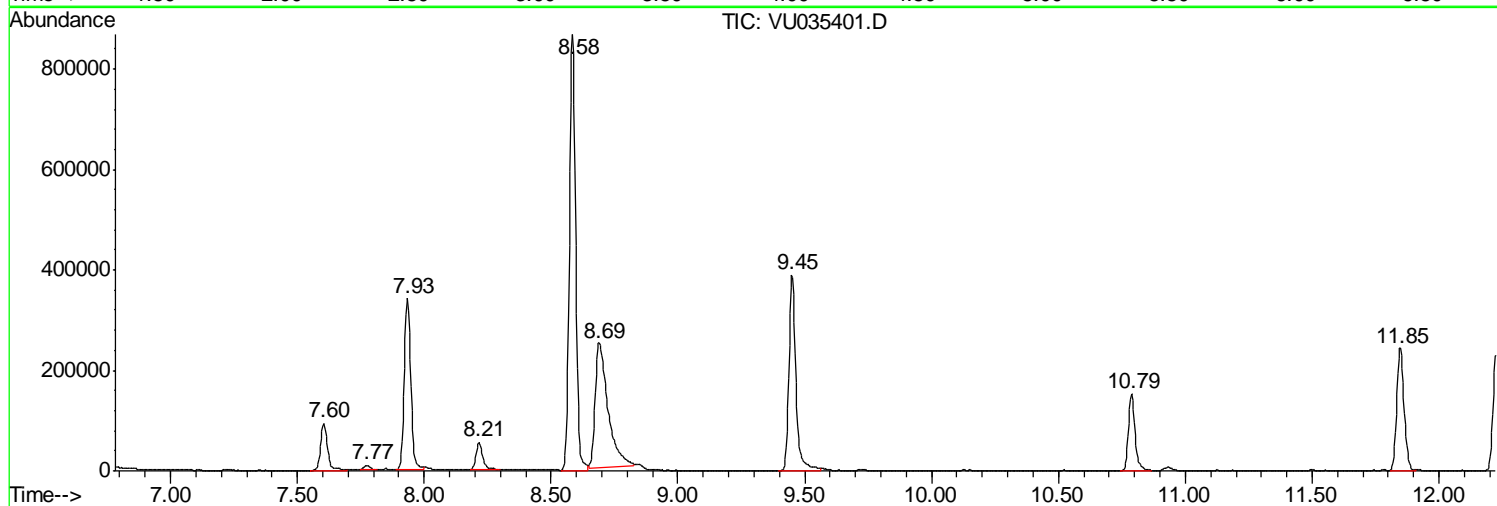
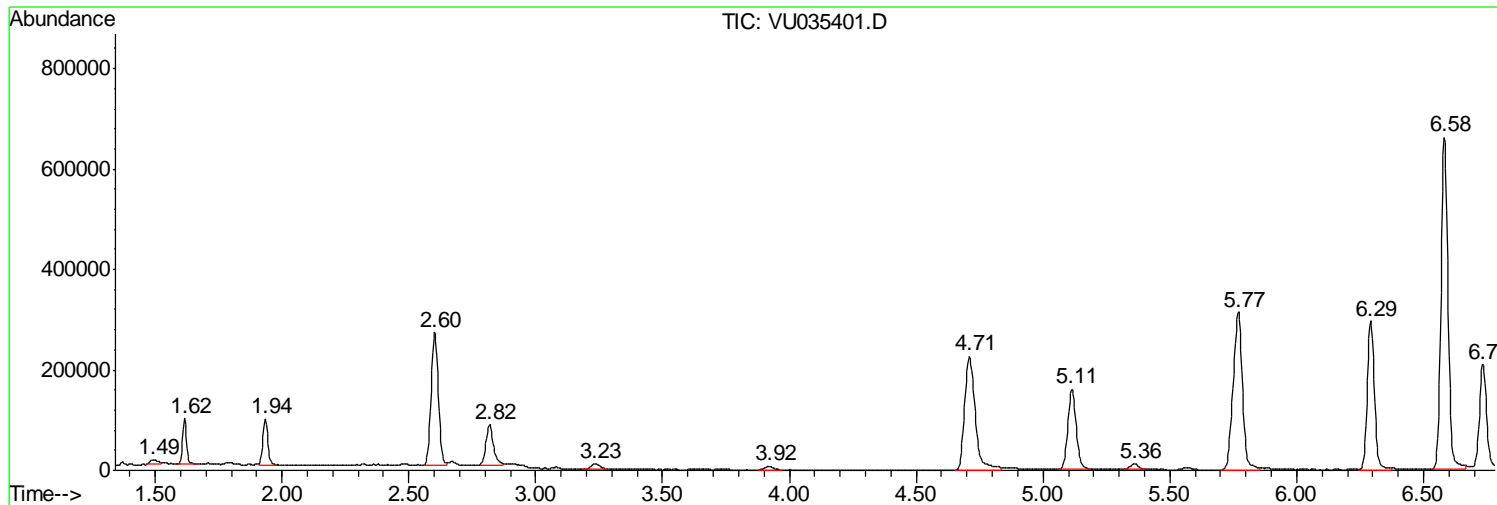
Sum of corrected areas: 10338492

Data Path : Z:\VOASRV\HPCHEM1\MSVOA U\DATA\VU102319\
Data File : VU035401.D
Acq On : 23 Oct 2019 11:19
Operator : JC/SP
Sample : K5458-07
Misc : 25.0mL/MSVOA U/WATER
ALS Vial : 4 Sample Multiplier: 1

Instrument :
MSVOA_U
ClientSampled :
C0K31

Quant Method : Z:\VOASRV\HPCHEM1\MSVOA_U\METHOD\SOMUTR101719WMA.M
Quant Title : TRACE VOA SOM01.0

TIC Library : C:\DATABASE\NIST11.L
TIC Integration Parameters: LSCINT.P



Data Path : Z:\VOASRV\HPCHEM1\MSVOA U\DATA\VU102319\
 Data File : VU035401.D
 Acq On : 23 Oct 2019 11:19
 Operator : JC/SP
 Sample : K5458-07
 Misc : 25.0mL/MSVOA U/WATER
 ALS Vial : 4 Sample Multiplier: 1

Instrument :
 MSVOA_U
 ClientSampleID :
 C0K31

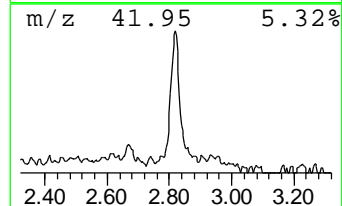
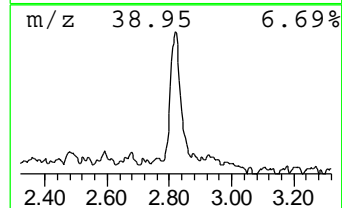
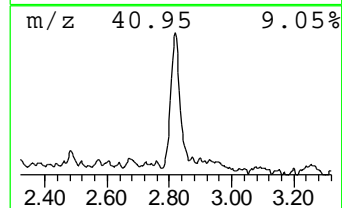
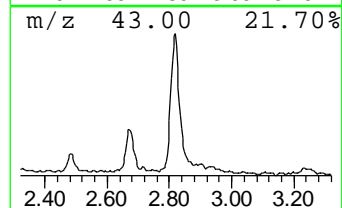
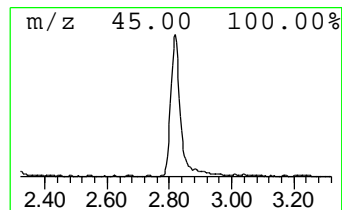
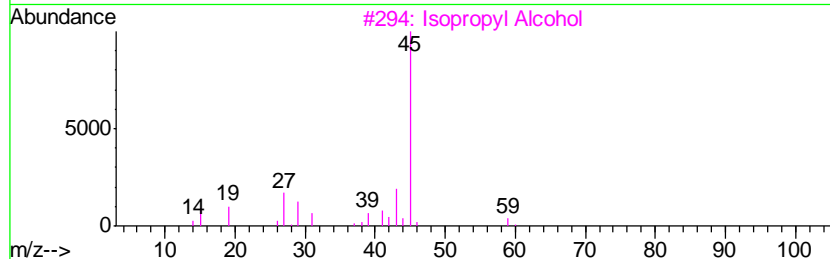
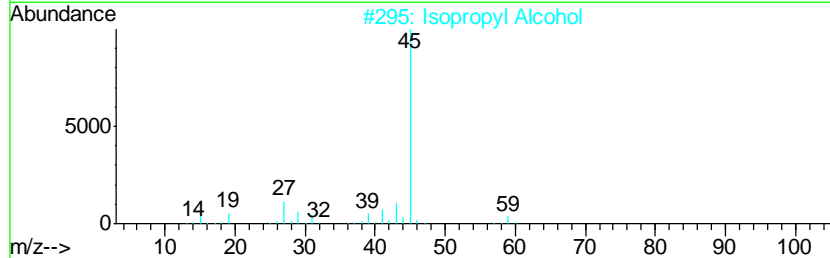
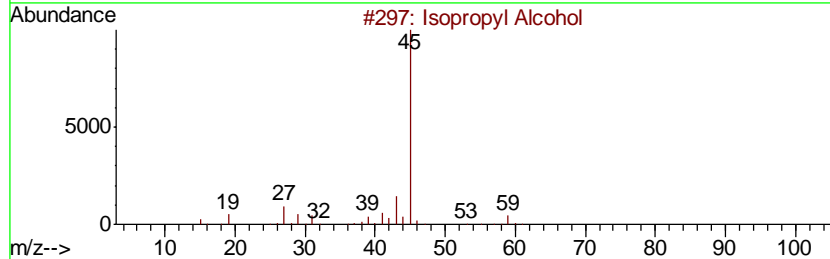
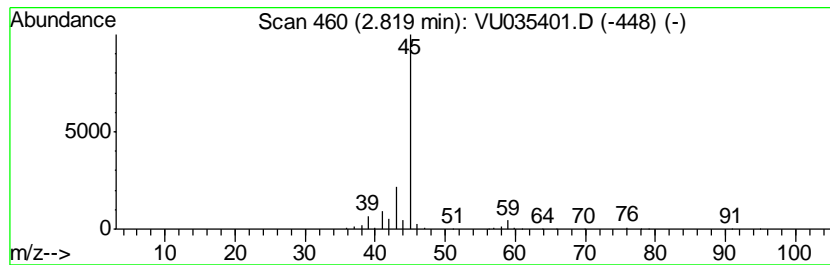
Quant Method : Z:\VOASRV\HPCHEM1\MSVOA_U\METHOD\SOMUTR101719WMA.M
 Quant Title : TRACE VOA SOM01.0

TIC Library : C:\DATABASE\NIST11.L
 TIC Integration Parameters: LSCINT.P

 Peak Number 1 Isopropyl Alcohol Concentration Rank 2

R.T.	EstConc	Area	Relative to ISTD	R.T.
2.82	1.40 ug/L	162901	1,4-Difluorobenzene	6.29

Hit#	of	Tentative ID	MW	MolForm	CAS#	Qual
1	5	Isopropyl Alcohol	60	C3H8O	000067-63-0	86
2		Isopropyl Alcohol	60	C3H8O	000067-63-0	86
3		Isopropyl Alcohol	60	C3H8O	000067-63-0	78
4		Isopropyl Alcohol	60	C3H8O	000067-63-0	56
5		Propane, 2-ethoxy-	88	C5H12O	000625-54-7	56



Data Path : Z:\VOASRV\HPCHEM1\MSVOA_U\DATA\VU102319\
Data File : VU035401.D
Acq On : 23 Oct 2019 11:19
Operator : JC/SP
Sample : K5458-07
Misc : 25.0mL/MSVOA_U/WATER
ALS Vial : 4 Sample Multiplier: 1

Instrument :
MSVOA_U
ClientSampleId :
C0K31

Quant Method : Z:\VOASRV\HPCHEM1\MSVOA_U\METHOD\SOMUTR101719WMA.M
Quant Title : TRACE VOA SOM01.0

TIC Library : C:\DATABASE\NIST11.L
TIC Integration Parameters: LSCINT.P

TIC Top Hit name	RT	EstConc	Units	Response	--Internal Standard--			
					#	RT	Resp	Conc
Isopropyl Alcohol	2.82	1.4	ug/L	162901	1	6.29	581338	5.0