

Data Path : Z:\VOASRV\HPCHEM1\MSVOA U\DATA\VU102319\
 Data File : VU035404.D
 Acq On : 23 Oct 2019 12:34
 Operator : JC/SP
 Sample : K5461-04
 Misc : 25.0mL/MSVOA U/WATER
 ALS Vial : 7 Sample Multiplier: 1

Instrument :
 MSVOA_U
 ClientSampled :
 H0G02

Integration Parameters: rteint.p
 Integrator: RTE
 Smoothing : ON
 Sampling : 1
 Start Thrs: 0.1
 Stop Thrs : 0

Filtering: 5
 Min Area: 3 % of largest Peak
 Max Peaks: 100
 Peak Location: TOP

If leading or trailing edge < 100 prefer < Baseline drop else tangent >
 Peak separation: 5

Method : Z:\VOASRV\HPCHEM1\MSVOA_U\METHOD\SOMUTR101719WMA.M
 Title : TRACE VOA SOM01.0

Signal : TIC

peak #	R.T. min	first scan	max scan	last scan	PK TY	peak height	corr. area	corr. % max.	% of total
1	1.620	76	87	99	rBV2	195804	245486	25.73%	3.446%
2	1.935	177	185	197	rVB	93200	123242	12.92%	1.730%
3	2.597	380	391	405	rBV	150975	254943	26.72%	3.579%
4	3.395	625	639	665	rBV3	43312	124186	13.02%	1.743%
5	4.578	993	1007	1022	rVB5	8098	19033	1.99%	0.267%
6	4.710	1028	1048	1080	rBV2	178679	516134	54.09%	7.245%
7	5.115	1158	1174	1197	rBV2	152529	354652	37.17%	4.979%
8	5.771	1355	1378	1406	rBV2	309476	809559	84.85%	11.365%
9	6.292	1527	1540	1564	rBV	277993	544964	57.12%	7.650%
10	6.578	1619	1629	1642	rVB9	5265	10038	1.05%	0.141%
11	6.735	1663	1678	1697	rBV	200698	402684	42.20%	5.653%
12	7.607	1935	1949	1974	rBV	88147	175322	18.38%	2.461%
13	7.935	2037	2051	2068	rBV	322830	594140	62.27%	8.341%
14	8.218	2127	2139	2164	rBV	50275	100677	10.55%	1.413%
15	8.697	2271	2288	2335	rBV2	268706	954127	100.00%	13.394%
16	9.449	2509	2522	2553	rBV	356070	696235	72.97%	9.774%
17	10.790	2926	2939	2961	rBV	154993	279282	29.27%	3.921%
18	11.845	3255	3267	3286	rVB	238030	461049	48.32%	6.472%
19	12.224	3372	3385	3403	rVB	249459	457788	47.98%	6.426%

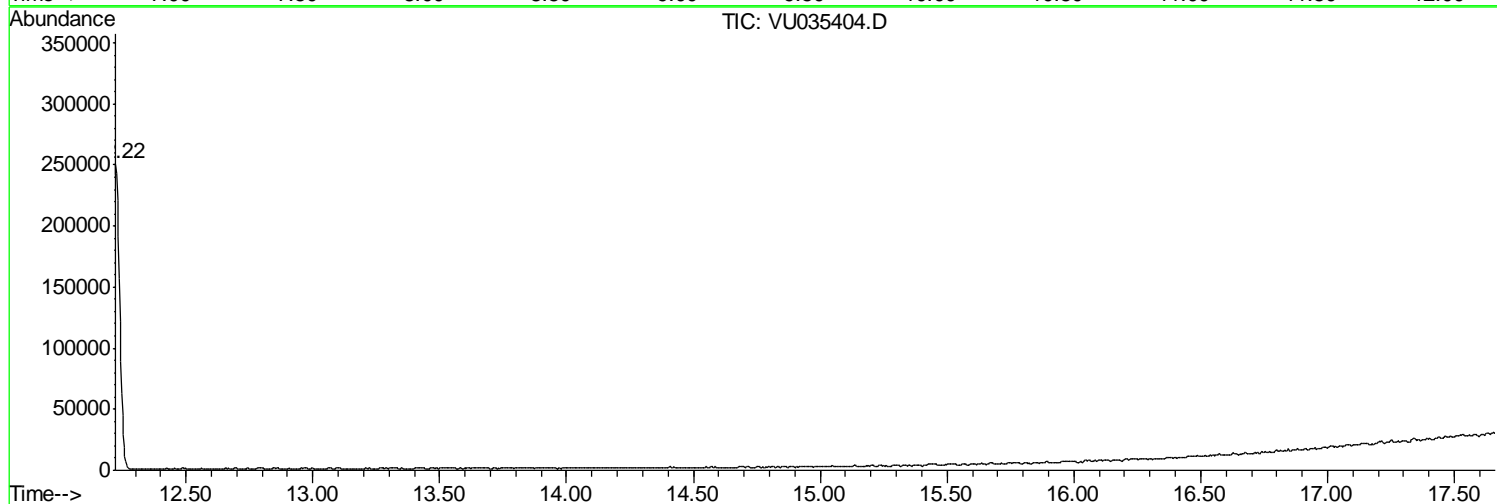
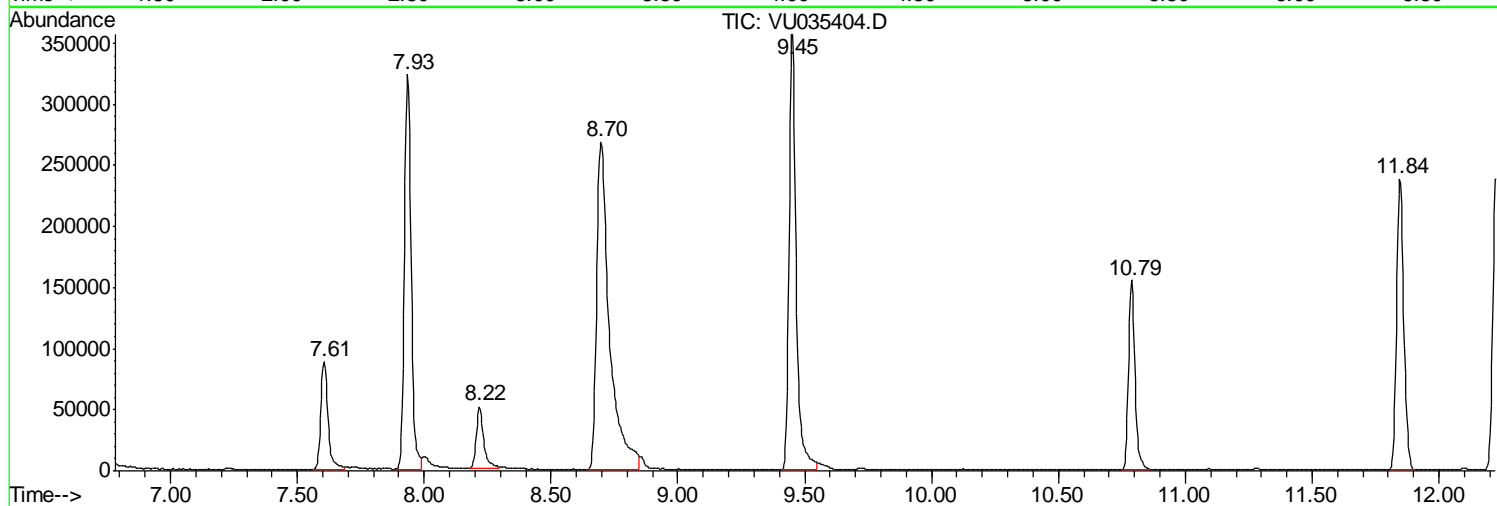
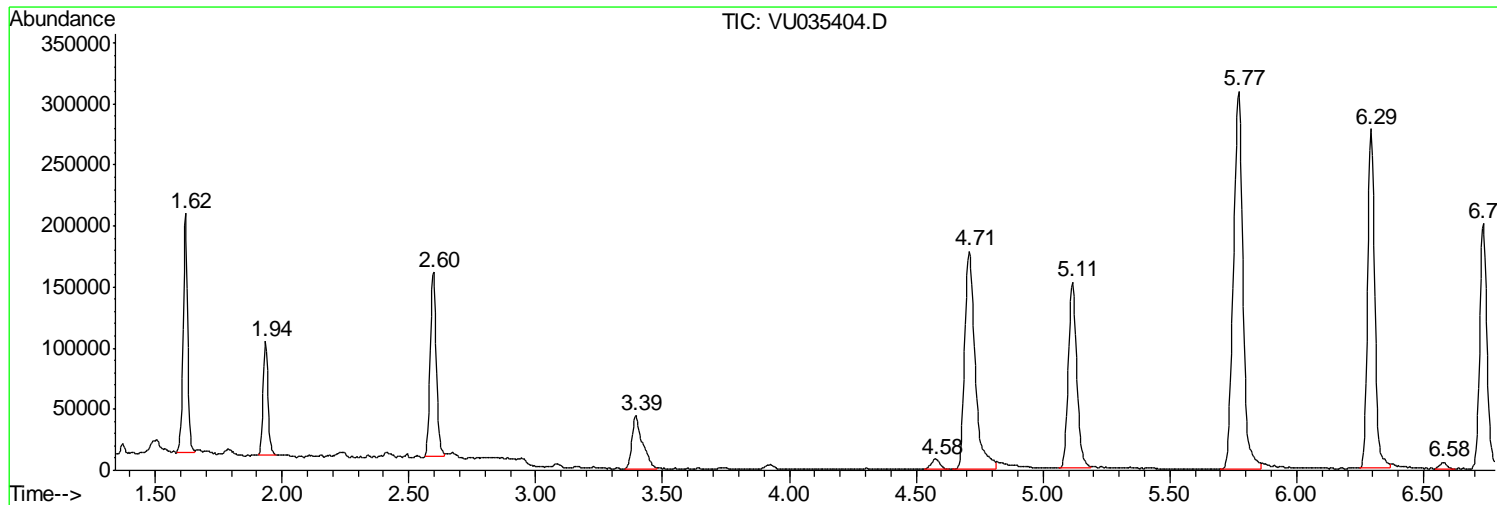
Sum of corrected areas: 7123541

Data Path : Z:\VOASRV\HPCHEM1\MSVOA U\DATA\VU102319\
Data File : VU035404.D
Acq On : 23 Oct 2019 12:34
Operator : JC/SP
Sample : K5461-04
Misc : 25.0mL/MSVOA U/WATER
ALS Vial : 7 Sample Multiplier: 1

Instrument :
MSVOA_U
ClientSampled :
H0G02

Quant Method : Z:\VOASRV\HPCHEM1\MSVOA_U\METHOD\SOMUTR101719WMA.M
Quant Title : TRACE VOA SOM01.0

TIC Library : C:\DATABASE\NIST11.L
TIC Integration Parameters: LSCINT.P



Data Path : Z:\VOASRV\HPCHEM1\MSVOA_U\DATA\VU102319\
Data File : VU035404.D
Acq On : 23 Oct 2019 12:34
Operator : JC/SP
Sample : K5461-04
Misc : 25.0mL/MSVOA_U/WATER
ALS Vial : 7 Sample Multiplier: 1

Instrument :
MSVOA_U
ClientSampleId :
H0G02

Quant Method : Z:\VOASRV\HPCHEM1\MSVOA_U\METHOD\SOMUTR101719WMA.M
Quant Title : TRACE VOA SOM01.0

TIC Library : C:\DATABASE\NIST11.L
TIC Integration Parameters: LSCINT.P

No Library Search Compounds Detected

Data Path : Z:\VOASRV\HPCHEM1\MSVOA_U\DATA\VU102319\
Data File : VU035404.D
Acq On : 23 Oct 2019 12:34
Operator : JC/SP
Sample : K5461-04
Misc : 25.0mL/MSVOA_U/WATER
ALS Vial : 7 Sample Multiplier: 1

Instrument :
MSVOA_U
ClientSampleId :
H0G02

Quant Method : Z:\VOASRV\HPCHEM1\MSVOA_U\METHOD\SOMUTR101719WMA.M
Quant Title : TRACE VOA SOM01.0

TIC Library : C:\DATABASE\NIST11.L
TIC Integration Parameters: LSCINT.P

TIC Top Hit name	RT	EstConc	Units	Response	--Internal Standard--			
					#	RT	Resp	Conc
