

Data Path : Z:\VOASRV\HPCHEM1\MSVOA U\DATA\VU102319\
 Data File : VU035430.D
 Acq On : 24 Oct 2019 00:37
 Operator : JC/SP
 Sample : K5488-15
 Misc : 25.0mL/MSVOA U/WATER
 ALS Vial : 35 Sample Multiplier: 1

Instrument :
 MSVOA_U
 ClientSampleId :
 H0FZO

Integration Parameters: rteint.p
 Integrator: RTE
 Smoothing : ON Filtering: 5
 Sampling : 1 Min Area: 3 % of largest Peak
 Start Thrs: 0.1 Max Peaks: 100
 Stop Thrs : 0 Peak Location: TOP

If leading or trailing edge < 100 prefer < Baseline drop else tangent >
 Peak separation: 5

Method : Z:\VOASRV\HPCHEM1\MSVOA_U\METHOD\SOMUTR101719WMA.M
 Title : TRACE VOA SOM01.0

Signal : TIC

peak #	R.T. min	first scan	max scan	last scan	PK TY	peak height	corr. area	corr. % max.	% of total
1	1.617	77	86	100	rBV2	436509	501739	4.94%	2.651%
2	1.932	177	184	201	rVB	77700	106182	1.05%	0.561%
3	2.594	380	390	411	rVB2	126821	219568	2.16%	1.160%
4	3.391	622	638	674	rBV2	1296633	2905653	28.64%	15.351%
5	4.719	1030	1051	1112	rBV	4455290	10147120	100.00%	53.610%
6	5.115	1160	1174	1197	rVB	128832	299146	2.95%	1.580%
7	5.771	1358	1378	1412	rBV2	256425	699426	6.89%	3.695%
8	6.292	1522	1540	1560	rBV	259629	506891	5.00%	2.678%
9	6.735	1663	1678	1701	rBV	169859	336041	3.31%	1.775%
10	7.603	1935	1948	1967	rBV	72398	137098	1.35%	0.724%
11	7.935	2036	2051	2071	rBV	260607	461095	4.54%	2.436%
12	8.687	2271	2285	2321	rBV	361203	861784	8.49%	4.553%
13	9.449	2509	2522	2548	rBV	361984	643629	6.34%	3.400%
14	10.787	2924	2938	2962	rVB	147633	249987	2.46%	1.321%
15	11.841	3252	3266	3290	rBV	241533	455944	4.49%	2.409%
16	12.221	3371	3384	3403	rBV	219892	396288	3.91%	2.094%

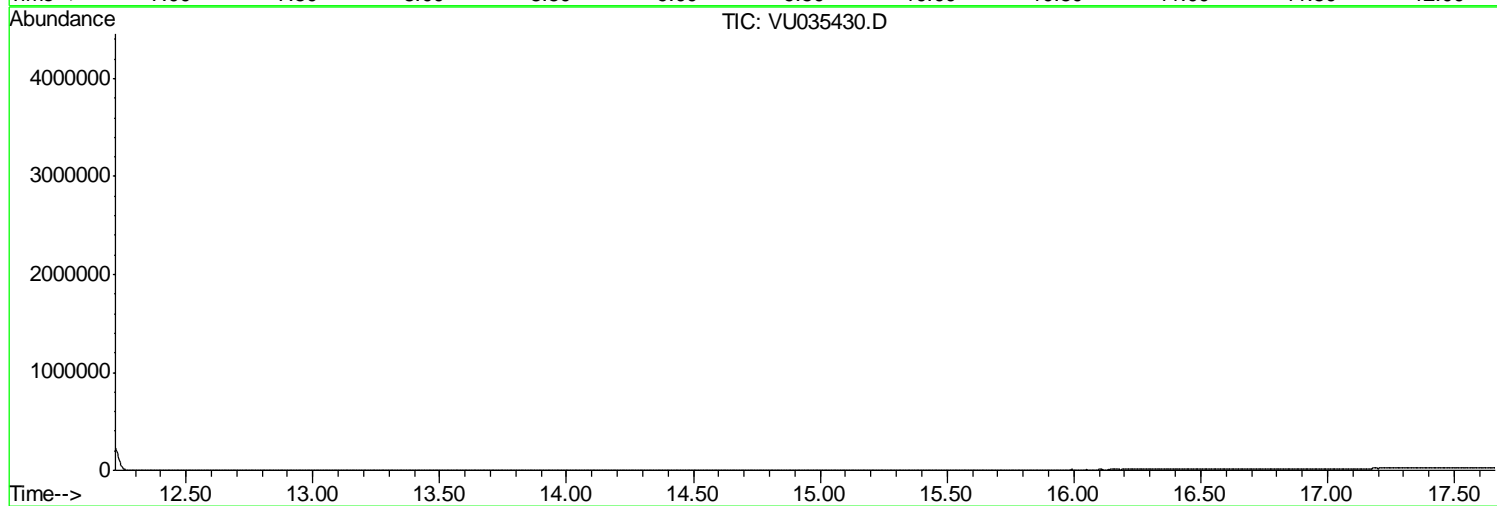
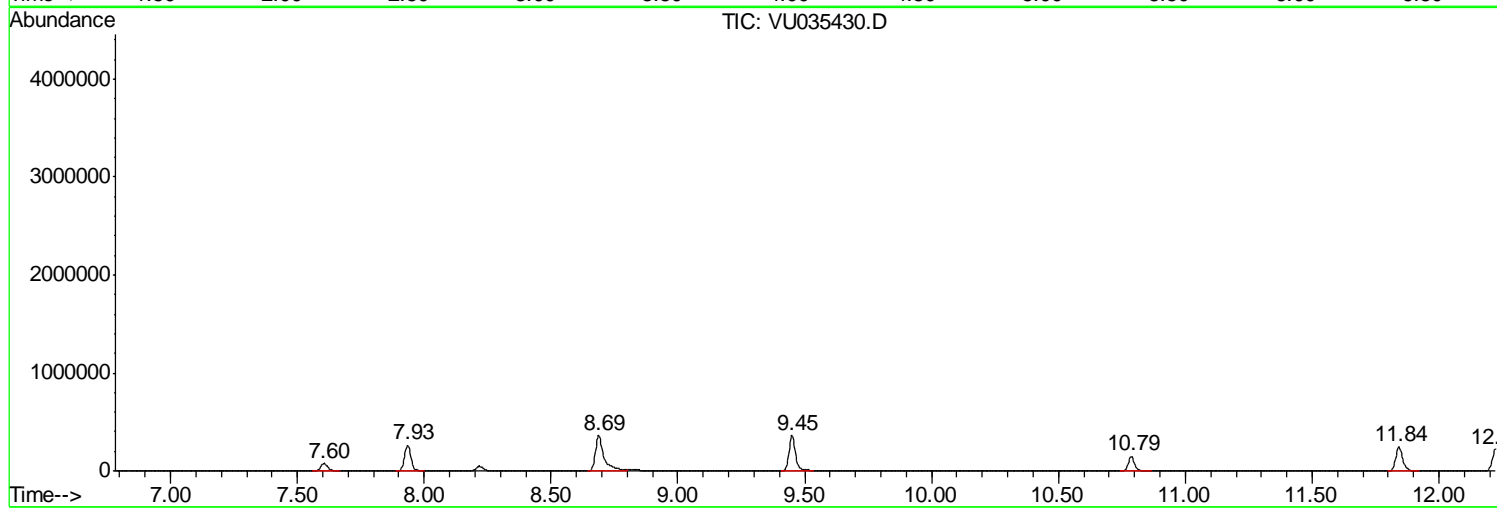
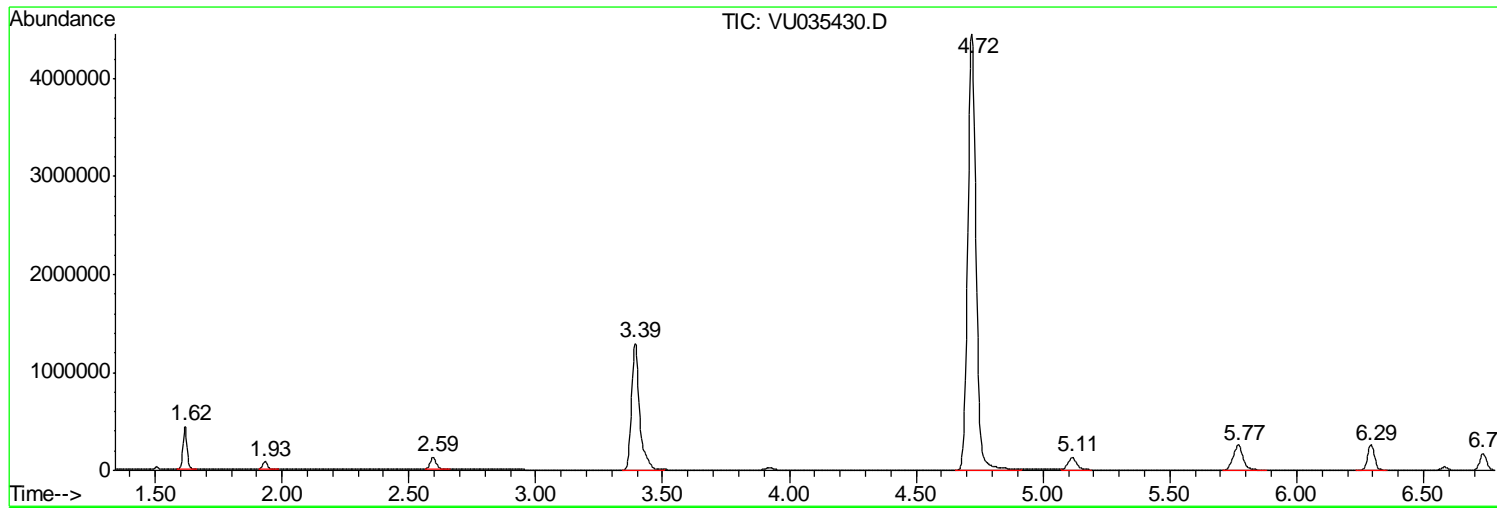
Sum of corrected areas: 18927591

Data Path : Z:\VOASRV\HPCHEM1\MSVOA U\DATA\VU102319\
Data File : VU035430.D
Acq On : 24 Oct 2019 00:37
Operator : JC/SP
Sample : K5488-15
Misc : 25.0mL/MSVOA U/WATER
ALS Vial : 35 Sample Multiplier: 1

Instrument :
MSVOA_U
ClientSampleId :
H0FZ0

Quant Method : Z:\VOASRV\HPCHEM1\MSVOA_U\METHOD\SOMUTR101719WMA.M
Quant Title : TRACE VOA SOM01.0

TIC Library : C:\DATABASE\NIST11.L
TIC Integration Parameters: LSCINT.P



Data Path : Z:\VOASRV\HPCHEM1\MSVOA_U\DATA\VU102319\
Data File : VU035430.D
Acq On : 24 Oct 2019 00:37
Operator : JC/SP
Sample : K5488-15
Misc : 25.0mL/MSVOA_U/WATER
ALS Vial : 35 Sample Multiplier: 1

Instrument :
MSVOA_U
ClientSampleId :
H0FZO

Quant Method : Z:\VOASRV\HPCHEM1\MSVOA_U\METHOD\SOMUTR101719WMA.M
Quant Title : TRACE VOA SOM01.0

TIC Library : C:\DATABASE\NIST11.L
TIC Integration Parameters: LSCINT.P

No Library Search Compounds Detected

Data Path : Z:\VOASRV\HPCHEM1\MSVOA_U\DATA\VU102319\
Data File : VU035430.D
Acq On : 24 Oct 2019 00:37
Operator : JC/SP
Sample : K5488-15
Misc : 25.0mL/MSVOA_U/WATER
ALS Vial : 35 Sample Multiplier: 1

Instrument :
MSVOA_U
ClientSampleId :
H0FZ0

Quant Method : Z:\VOASRV\HPCHEM1\MSVOA_U\METHOD\SOMUTR101719WMA.M
Quant Title : TRACE VOA SOM01.0

TIC Library : C:\DATABASE\NIST11.L
TIC Integration Parameters: LSCINT.P

TIC Top Hit name	RT	EstConc	Units	Response	--Internal Standard--			
					#	RT	Resp	Conc
