

Data Path : Z:\VOASRV\HPCHEM1\MSVOA U\DATA\VU102319\
 Data File : VU035446.D
 Acq On : 24 Oct 2019 08:51
 Operator : JC/SP
 Sample : K5509-09
 Misc : 25.0mL/MSVOA U/WATER
 ALS Vial : 55 Sample Multiplier: 1

Instrument :
 MSVOA_U
 ClientSampled :
 H0G60

Integration Parameters: rteint.p
 Integrator: RTE
 Smoothing : ON
 Sampling : 1
 Start Thrs: 0.1
 Stop Thrs : 0

Filtering: 5
 Min Area: 3 % of largest Peak
 Max Peaks: 100
 Peak Location: TOP

If leading or trailing edge < 100 prefer < Baseline drop else tangent >
 Peak separation: 5

Method : Z:\VOASRV\HPCHEM1\MSVOA_U\METHOD\SOMUTR101719WMA.M
 Title : TRACE VOA SOM01.0

Signal : TIC

peak #	R.T. min	first scan	max scan	last scan	PK TY	peak height	corr. area	corr. % max.	% of total
1	1.617	79	86	95	rBV	72910	77613	9.24%	1.362%
2	1.935	177	185	201	rVB	77827	101044	12.03%	1.774%
3	2.597	380	391	404	rBV	116390	192159	22.88%	3.373%
4	2.671	408	414	426	rVB	14852	25191	3.00%	0.442%
5	2.816	449	459	473	rBV2	25216	50173	5.97%	0.881%
6	4.703	1028	1046	1068	rBV	139244	361089	42.99%	6.338%
7	5.118	1157	1175	1202	rBV4	121722	315532	37.57%	5.538%
8	5.771	1354	1378	1410	rBV2	251577	659303	78.50%	11.572%
9	6.295	1526	1541	1571	rBV	238273	474777	56.53%	8.333%
10	6.568	1613	1626	1641	rBV2	60959	119669	14.25%	2.100%
11	6.735	1664	1678	1700	rBV2	173276	347422	41.37%	6.098%
12	7.607	1932	1949	1967	rBV	67890	132116	15.73%	2.319%
13	7.935	2035	2051	2069	rBV	246898	453745	54.03%	7.964%
14	8.218	2127	2139	2153	rBV	39981	76051	9.06%	1.335%
15	8.693	2271	2287	2352	rBV	195483	839857	100.00%	14.741%
16	9.449	2509	2522	2547	rBV	311926	602671	71.76%	10.578%
17	10.787	2927	2938	2965	rVB2	90526	169120	20.14%	2.968%
18	11.848	3255	3268	3289	rBV	183417	361253	43.01%	6.341%
19	12.224	3370	3385	3401	rBV2	180280	338608	40.32%	5.943%

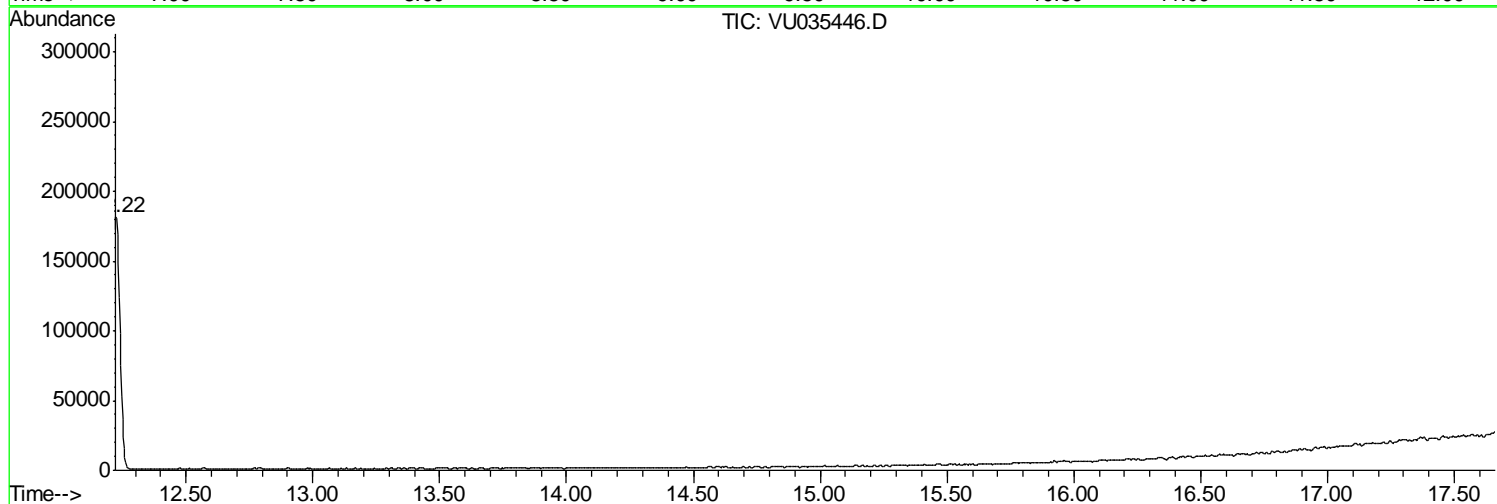
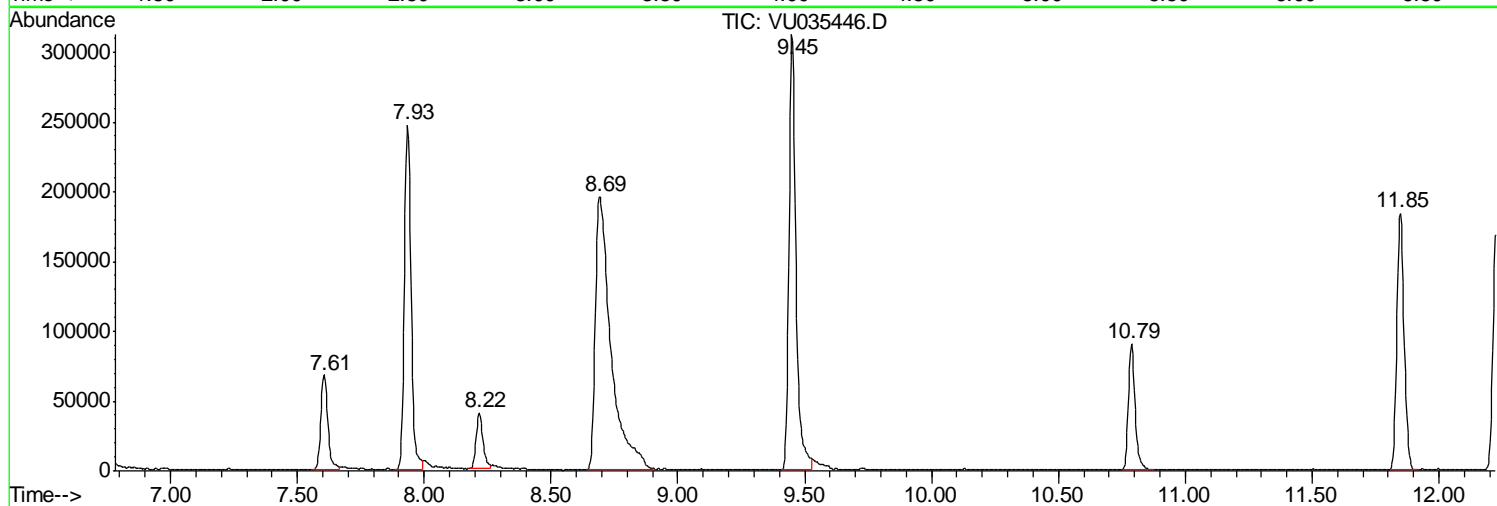
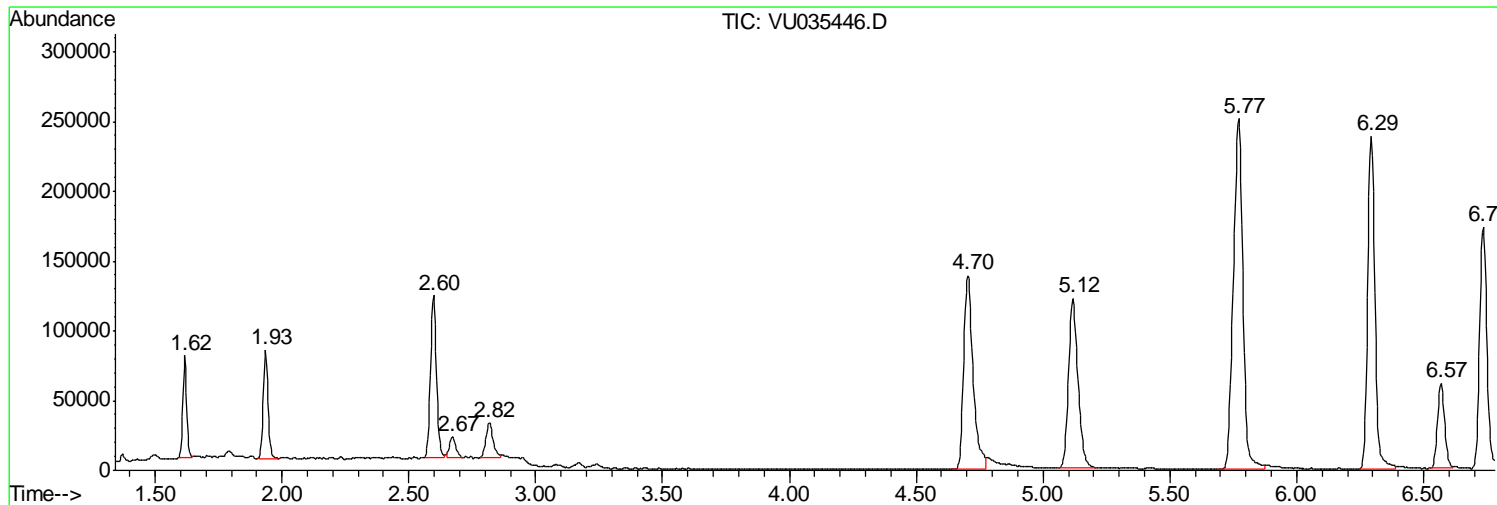
Sum of corrected areas: 5697393

Data Path : Z:\VOASRV\HPCHEM1\MSVOA U\DATA\VU102319\
Data File : VU035446.D
Acq On : 24 Oct 2019 08:51
Operator : JC/SP
Sample : K5509-09
Misc : 25.0mL/MSVOA U/WATER
ALS Vial : 55 Sample Multiplier: 1

Instrument :
MSVOA_U
ClientSampleId :
H0G60

Quant Method : Z:\VOASRV\HPCHEM1\MSVOA_U\METHOD\SOMUTR101719WMA.M
Quant Title : TRACE VOA SOM01.0

TIC Library : C:\DATABASE\NIST11.L
TIC Integration Parameters: LSCINT.P



Data Path : Z:\VOASRV\HPCHEM1\MSVOA U\DATA\VU102319\
 Data File : VU035446.D
 Acq On : 24 Oct 2019 08:51
 Operator : JC/SP
 Sample : K5509-09
 Misc : 25.0mL/MSVOA U/WATER
 ALS Vial : 55 Sample Multiplier: 1

Instrument :
 MSVOA_U
 ClientSampleID :
 H0G60

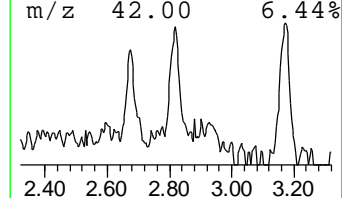
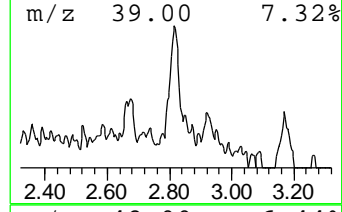
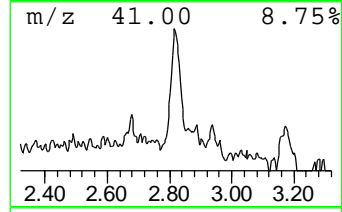
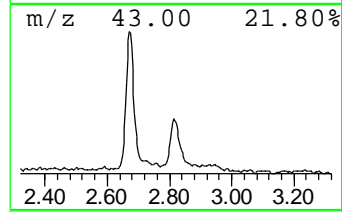
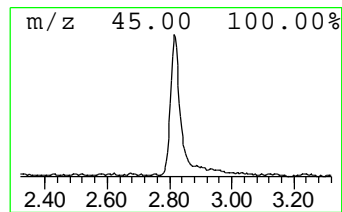
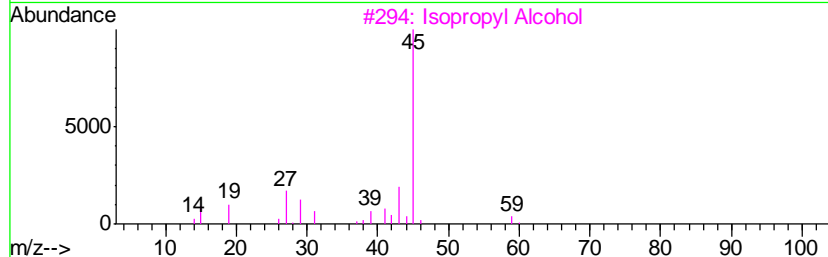
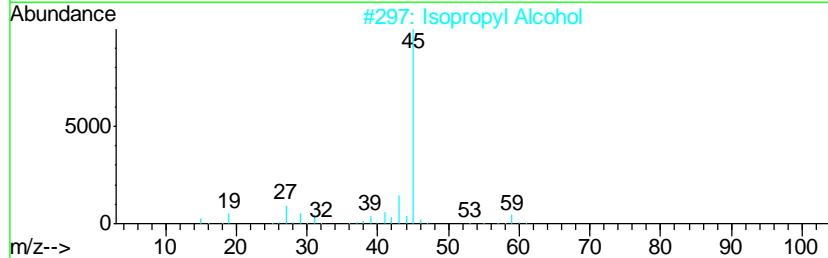
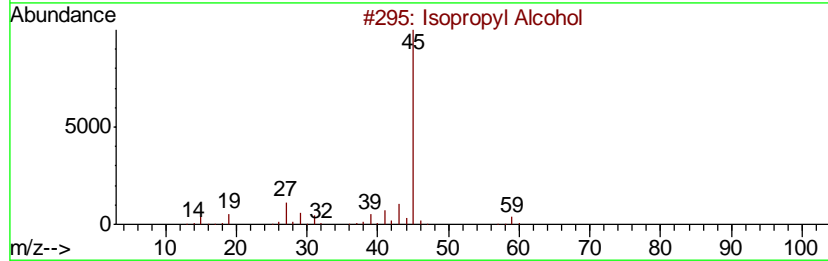
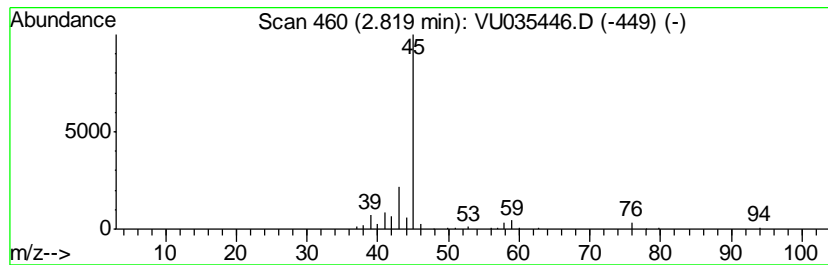
Quant Method : Z:\VOASRV\HPCHEM1\MSVOA_U\METHOD\SOMUTR101719WMA.M
 Quant Title : TRACE VOA SOM01.0

TIC Library : C:\DATABASE\NIST11.L
 TIC Integration Parameters: LSCINT.P

 Peak Number 1 Isopropyl Alcohol Concentration Rank 3

R.T.	EstConc	Area	Relative to ISTD	R.T.
2.82	0.53 ug/L	50173	1,4-Difluorobenzene	6.29

Hit#	of	Tentative ID	MW	MolForm	CAS#	Qual
1	5	Isopropyl Alcohol	60	C3H8O	000067-63-0	86
2		Isopropyl Alcohol	60	C3H8O	000067-63-0	78
3		Isopropyl Alcohol	60	C3H8O	000067-63-0	78
4		Isopropyl Alcohol	60	C3H8O	000067-63-0	72
5		Propane, 2-ethoxy-	88	C5H12O	000625-54-7	56



Data Path : Z:\VOASRV\HPCHEM1\MSVOA U\DATA\VU102319\
 Data File : VU035446.D
 Acq On : 24 Oct 2019 08:51
 Operator : JC/SP
 Sample : K5509-09
 Misc : 25.0mL/MSVOA U/WATER
 ALS Vial : 55 Sample Multiplier: 1

Instrument :
 MSVOA_U
 ClientSampled :
 H0G60

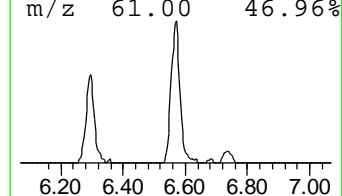
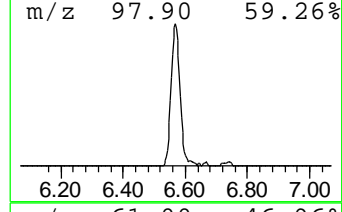
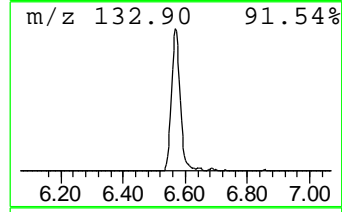
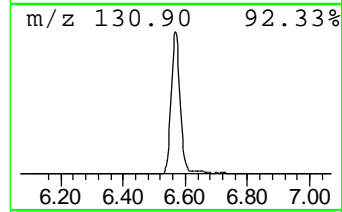
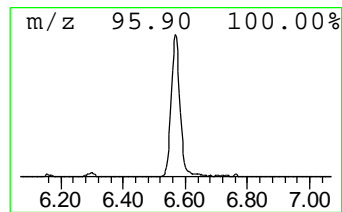
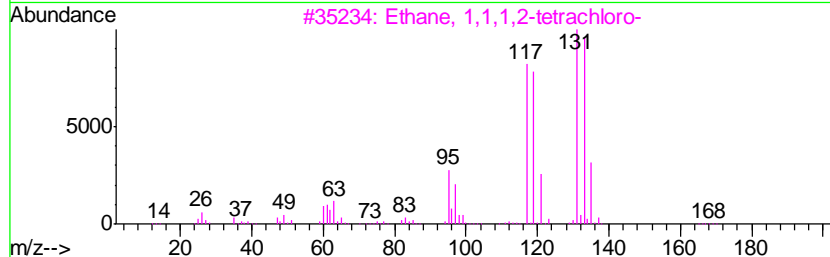
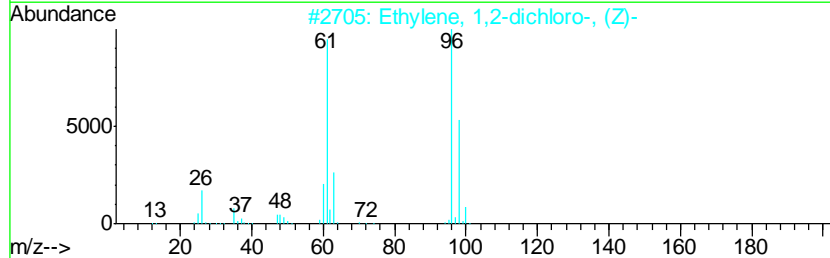
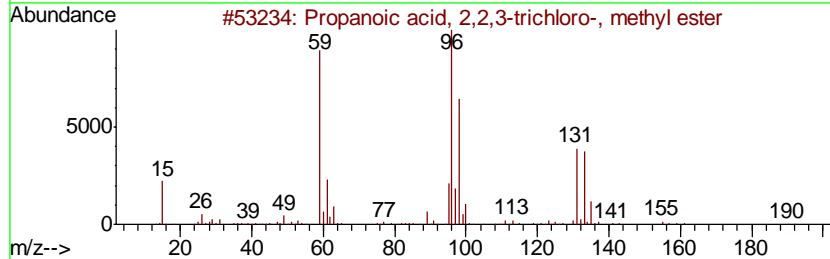
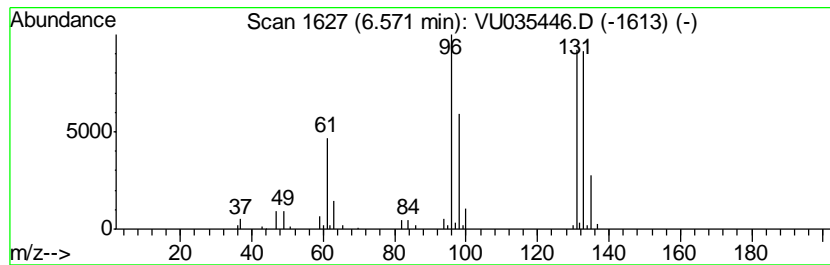
Quant Method : Z:\VOASRV\HPCHEM1\MSVOA_U\METHOD\SOMUTR101719WMA.M
 Quant Title : TRACE VOA SOM01.0

TIC Library : C:\DATABASE\NIST11.L
 TIC Integration Parameters: LSCINT.P

 Peak Number 2 Propanoic acid, 2,2,3-trich... Concentration Rank 2

R.T.	EstConc	Area	Relative to ISTD	R.T.
6.57	1.26 ug/L	119669	1,4-Difluorobenzene	6.29

Hit#	of	Tentative ID	MW	MolForm	CAS#	Qual
1	5	Propanoic acid, 2,2,3-trichloro-...	190	C4H5Cl3O2	004749-35-3	50
2		Ethylene, 1,2-dichloro-, (Z)-	96	C2H2Cl2	000156-59-2	35
3		Ethane, 1,1,1,2-tetrachloro-	166	C2H2Cl4	000630-20-6	25
4		m-Methoxybenzonitrile	133	C8H7NO	001527-89-5	9
5		Difluoro(methylamino)phosphine s...	131	CH4F2NPS	1000306-16-8	9



Data Path : Z:\VOASRV\HPCHEM1\MSVOA_U\DATA\VU102319\
Data File : VU035446.D
Acq On : 24 Oct 2019 08:51
Operator : JC/SP
Sample : K5509-09
Misc : 25.0mL/MSVOA_U/WATER
ALS Vial : 55 Sample Multiplier: 1

Instrument :
MSVOA_U
ClientSampleId :
H0G60

Quant Method : Z:\VOASRV\HPCHEM1\MSVOA_U\METHOD\SOMUTR101719WMA.M
Quant Title : TRACE VOA SOM01.0

TIC Library : C:\DATABASE\NIST11.L
TIC Integration Parameters: LSCINT.P

TIC Top Hit name	RT	EstConc	Units	Response	--Internal Standard--			
					#	RT	Resp	Conc
Isopropyl Alcohol	2.82	0.5	ug/L	50173	1	6.29	474777	5.0
Propanoic acid, 2...	6.57	1.3	ug/L	119669	1	6.29	474777	5.0