

Data Path : Z:\VOASRV\HPCHEM1\MSVOA U\DATA\VU102518\
 Data File : VU027808.D
 Acq On : 25 Oct 2018 16:43
 Operator : MD/SY
 Sample : J5635-22ME 10X
 Misc : 4.83g/5mL/100uL/5.0mL/MSVOA_U/MEOH
 ALS Vial : 4 Sample Multiplier: 1

Instrument :
 MSVOA_U
 ClientSampleId :
 A40F8ME

Quant Time: Oct 26 02:40:56 2018
 Quant Method : Z:\VOASRV\HPCHEM1\MSVOA_U\METHOD\SOMULM102218WMA.M
 Quant Title : VOC Analysis
 QLast Update : Fri Oct 26 02:27:34 2018
 Response via : Initial Calibration

Internal Standards	R.T.	QIon	Response	Conc	Units	Dev(Min)
1) 1,4-Difluorobenzene	5.89	114	93565	50.00	ug/L	0.00
28) Chlorobenzene-d5	9.09	117	88131	50.00	ug/L	0.00
60) 1,4-Dichlorobenzene-d4	11.48	152	43218	50.00	ug/L	0.00

System Monitoring Compounds

4) Vinyl Chloride-d3	1.40	65	25240	34.67	ug/L	0.00
Spiked Amount	50.000	Range	60 - 135	Recovery	=	69.34%
7) Chloroethane-d5	1.67	69	19487	34.77	ug/L	0.00
Spiked Amount	50.000	Range	70 - 130	Recovery	=	69.54%#
11) 1,1-Dichloroethene-d2	2.27	63	37517	28.61	ug/L	0.00
Spiked Amount	50.000	Range	60 - 125	Recovery	=	57.22%#
21) 2-Butanone-d5	4.18	46	47162	76.02	ug/L	0.00
Spiked Amount	100.000	Range	40 - 130	Recovery	=	76.02%
24) Chloroform-d	4.65	84	50528	38.61	ug/L	0.00
Spiked Amount	50.000	Range	70 - 125	Recovery	=	77.22%
26) 1,2-Dichloroethane-d4	5.31	65	38444	42.42	ug/L	0.00
Spiked Amount	50.000	Range	70 - 125	Recovery	=	84.84%
32) Benzene-d6	5.34	84	94086	37.49	ug/L	0.00
Spiked Amount	50.000	Range	70 - 125	Recovery	=	74.98%
36) 1,2-Dichloropropane-d6	6.33	67	34398	38.39	ug/L	0.00
Spiked Amount	50.000	Range	70 - 120	Recovery	=	76.78%
41) Toluene-d8	7.57	98	86522	37.37	ug/L	0.00
Spiked Amount	50.000	Range	80 - 120	Recovery	=	74.74%#
43) trans-1,3-Dichloropropene-	7.85	79	15441	35.48	ug/L	0.00
Spiked Amount	50.000	Range	60 - 125	Recovery	=	70.96%
47) 2-Hexanone-d5	8.31	63	34440	75.11	ug/L	0.00
Spiked Amount	100.000	Range	45 - 130	Recovery	=	75.11%
57) 1,1,2,2-Tetrachloroethane-	10.43	84	46043	39.79	ug/L	0.00
Spiked Amount	50.000	Range	65 - 120	Recovery	=	79.58%
64) 1,2-Dichlorobenzene-d4	11.86	152	34629	39.12	ug/L	0.00
Spiked Amount	50.000	Range	80 - 120	Recovery	=	78.24%#

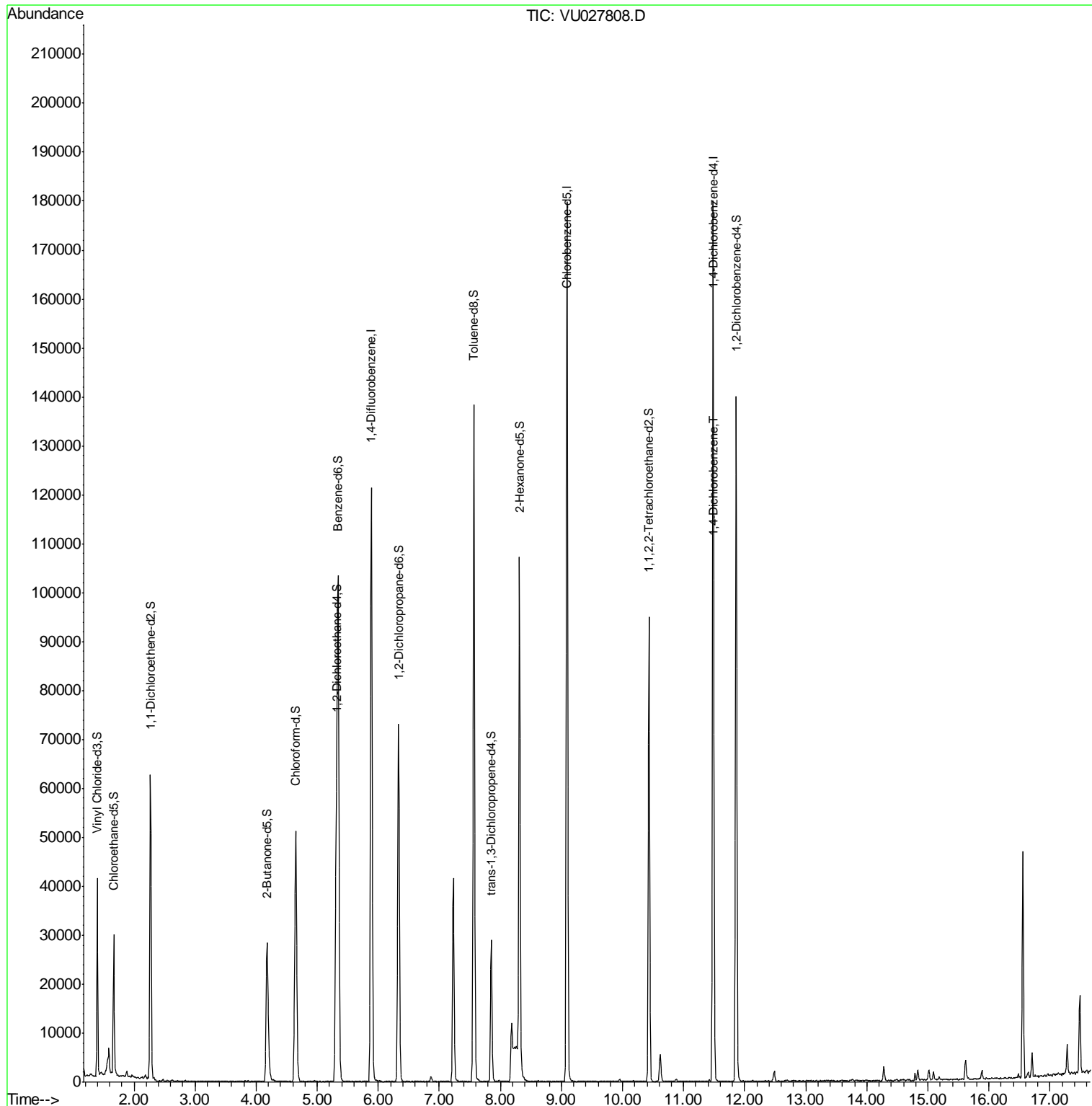
Target Compounds					Ovalue
63) 1,4-Dichlorobenzene	11.50	146	803	0.608 ug/L #	83

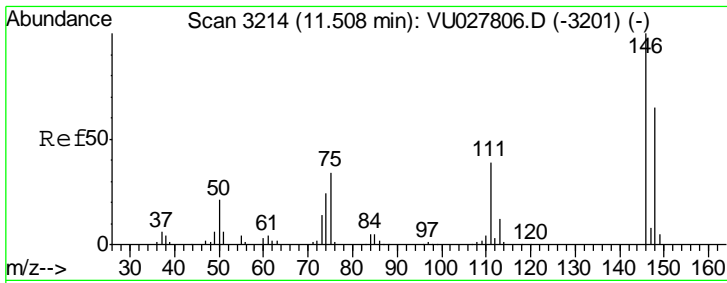
(#) = qualifier out of range (m) = manual integration (+) = signals summed

Data Path : Z:\VOASRV\HPCHEM1\MSVOA U\DATA\VU102518\
 Data File : VU027808.D
 Acq On : 25 Oct 2018 16:43
 Operator : MD/SY
 Sample : J5635-22ME 10X
 Misc : 4.83µ/5mL/100uL/5.0mL/MSVOA_U/MEOH
 ALS Vial : 4 Sample Multiplier: 1

Instrument :
 MSVOA_U
 ClientSampled :
 A40F8ME

Quant Time: Oct 26 02:40:56 2018
 Quant Method : Z:\VOASRV\HPCHEM1\MSVOA_U\METHOD\SOMULM102218WMA.M
 Quant Title : VOC Analysis
 QLast Update : Fri Oct 26 02:27:34 2018
 Response via : Initial Calibration





#63
 1,4-Dichlorobenzene
 Concen: 0.608 ug/L
 RT: 11.50 min Scan# 3213
 Delta R.T. -0.00 min
 Lab File: VU027808.D
 Acq: 25 Oct 2018 16:43

Instrument :
 MSVOA_U
 ClientSampled :
 A40F8ME

Tot Ion	Ratio	Lower	Upper
146	100		
111	55.1	27.5	51.1#
148	72.3	44.1	81.9

