

Data Path : Z:\VOASRV\HPCHEM1\MSVOA U\DATA\VU102518\
 Data File : VU027810.D
 Acq On : 25 Oct 2018 17:52
 Operator : MD/SY
 Sample : J5635-25ME 10X
 Misc : 4.91µ/5mL/100uL/5.0mL/MSVOA_U/MEOH
 ALS Vial : 7 Sample Multiplier: 1

Instrument :
 MSVOA_U
 ClientSampleId :
 A40G1ME

Quant Time: Oct 26 02:46:24 2018
 Quant Method : Z:\VOASRV\HPCHEM1\MSVOA_U\METHOD\SOMULM102218WMA.M
 Quant Title : VOC Analysis
 QLast Update : Fri Oct 26 02:27:34 2018
 Response via : Initial Calibration

Internal Standards	R.T.	QIon	Response	Conc	Units	Dev(Min)
1) 1,4-Difluorobenzene	5.89	114	95795	50.00	µg/L	0.00
28) Chlorobenzene-d5	9.09	117	92284	50.00	µg/L	0.00
60) 1,4-Dichlorobenzene-d4	11.48	152	44709	50.00	µg/L	0.00

System Monitoring Compounds

4) Vinyl Chloride-d3	1.40	65	25666	34.43	µg/L	0.00
Spiked Amount	50.000	Range	60 - 135	Recovery	=	68.86%
7) Chloroethane-d5	1.67	69	20668	36.02	µg/L	0.00
Spiked Amount	50.000	Range	70 - 130	Recovery	=	72.04%
11) 1,1-Dichloroethene-d2	2.27	63	37913	28.24	µg/L	0.00
Spiked Amount	50.000	Range	60 - 125	Recovery	=	56.48%#
21) 2-Butanone-d5	4.18	46	50011	78.73	µg/L	0.00
Spiked Amount	100.000	Range	40 - 130	Recovery	=	78.73%
24) Chloroform-d	4.65	84	51313	38.30	µg/L	0.00
Spiked Amount	50.000	Range	70 - 125	Recovery	=	76.60%
26) 1,2-Dichloroethane-d4	5.31	65	39533	42.61	µg/L	0.00
Spiked Amount	50.000	Range	70 - 125	Recovery	=	85.22%
32) Benzene-d6	5.34	84	95133	36.20	µg/L	0.00
Spiked Amount	50.000	Range	70 - 125	Recovery	=	72.40%
36) 1,2-Dichloropropane-d6	6.33	67	34788	37.08	µg/L	0.00
Spiked Amount	50.000	Range	70 - 120	Recovery	=	74.16%
41) Toluene-d8	7.57	98	89279	36.83	µg/L	0.00
Spiked Amount	50.000	Range	80 - 120	Recovery	=	73.66%#
43) trans-1,3-Dichloropropene-	7.85	79	17049	37.42	µg/L	0.00
Spiked Amount	50.000	Range	60 - 125	Recovery	=	74.84%
47) 2-Hexanone-d5	8.31	63	36163	75.31	µg/L	0.00
Spiked Amount	100.000	Range	45 - 130	Recovery	=	75.31%
57) 1,1,2,2-Tetrachloroethane-	10.43	84	46444	38.33	µg/L	0.00
Spiked Amount	50.000	Range	65 - 120	Recovery	=	76.66%
64) 1,2-Dichlorobenzene-d4	11.86	152	35963	39.27	µg/L	0.00
Spiked Amount	50.000	Range	80 - 120	Recovery	=	78.54%#

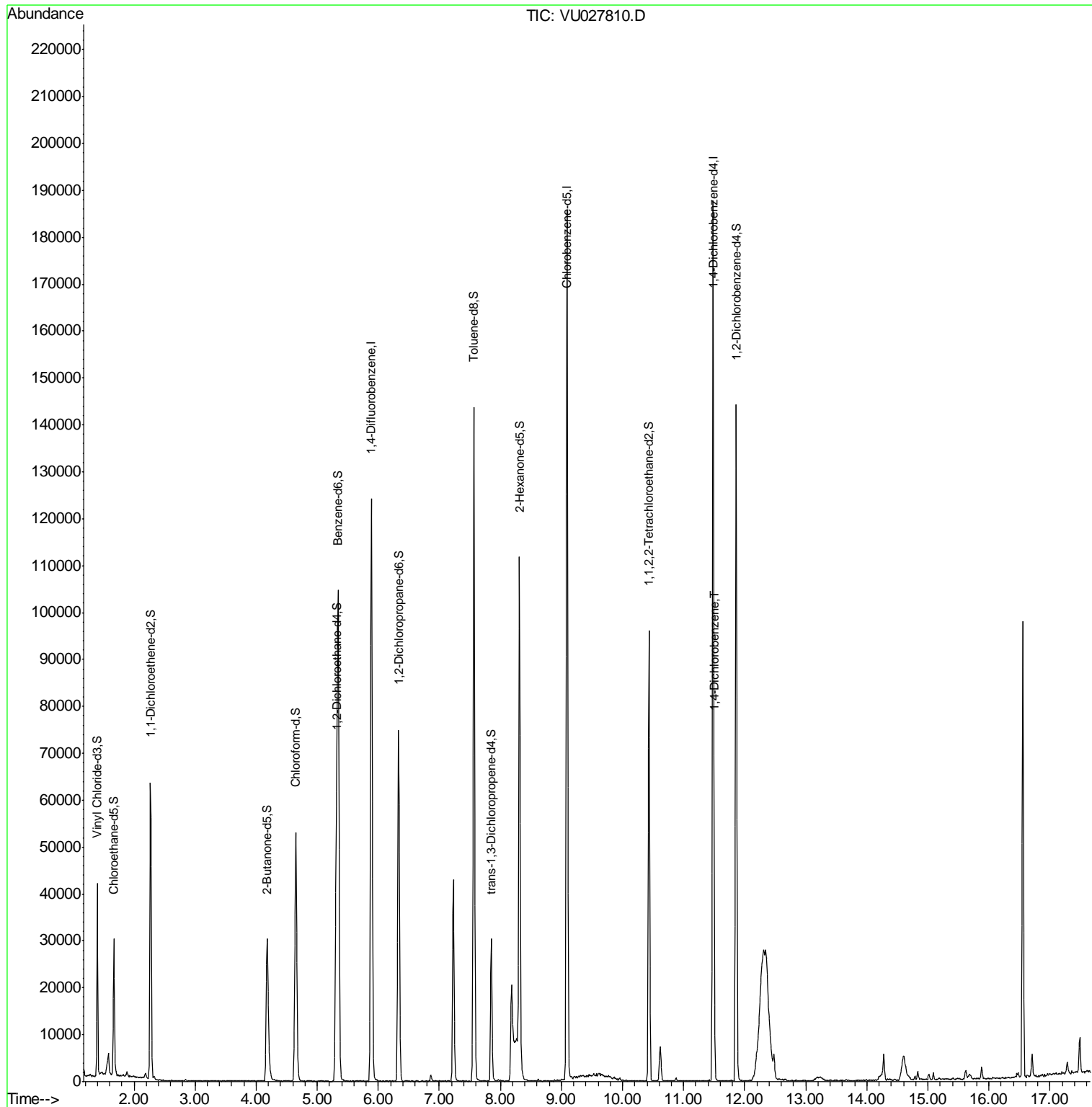
Target Compounds	R.T.	QIon	Response	Conc	Units	Ovalue
63) 1,4-Dichlorobenzene	11.51	146	1186	0.868	µg/L	92

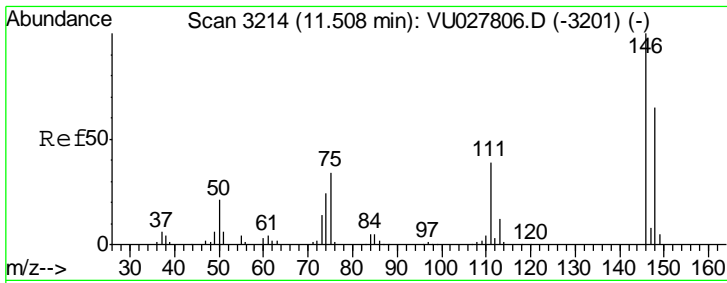
(#) = qualifier out of range (m) = manual integration (+) = signals summed

Data Path : Z:\VOASRV\HPCHEM1\MSVOA U\DATA\VU102518\
 Data File : VU027810.D
 Acq On : 25 Oct 2018 17:52
 Operator : MD/SY
 Sample : J5635-25ME 10X
 Misc : 4.91µ/5mL/100uL/5.0mL/MSVOA_U/MEOH
 ALS Vial : 7 Sample Multiplier: 1

Instrument :
 MSVOA_U
 Client Sampled :
 A40G1ME

Quant Time: Oct 26 02:46:24 2018
 Quant Method : Z:\VOASRV\HPCHEM1\MSVOA_U\METHOD\SOMULM102218WMA.M
 Quant Title : VOC Analysis
 QLast Update : Fri Oct 26 02:27:34 2018
 Response via : Initial Calibration





#63
 1,4-Dichlorobenzene
 Concen: 0.868 ug/L
 RT: 11.51 min Scan# 3214
 Delta R.T. -0.00 min
 Lab File: VU027810.D
 Acq: 25 Oct 2018 17:52

Instrument : MSVOA_U
 ClientSampled : A40G1ME

Tot Ion:146 Resp: 1186

Ion	Ratio	Lower	Upper
146	100		
111	35.7	27.5	51.1
148	55.3	44.1	81.9

