

Data Path : Z:\VOASRV\HPCHEM1\MSVOA U\DATA\VU102519\
 Data File : VU035497.D
 Acq On : 25 Oct 2019 19:36
 Operator : JC/SP
 Sample : K5554-06
 Misc : 25.0mL/MSVOA U/WATER
 ALS Vial : 24 Sample Multiplier: 1

Instrument :
 MSVOA_U
 ClientSampleId :
 GAQ86

Quant Time: Oct 26 05:36:08 2019
 Quant Method : Z:\VOASRV\HPCHEM1\MSVOA_U\METHOD\SOMUTR102519WMA.M
 Quant Title : TRACE VOA SOM01.0
 QLast Update : Sat Oct 26 04:07:11 2019
 Response via : Initial Calibration

Internal Standards	R.T.	QIon	Response	Conc	Units	Dev(Min)
1) 1,4-Difluorobenzene	6.29	114	194894	5.00	ug/L	0.00
28) Chlorobenzene-d5	9.45	117	220440	5.00	ug/L	0.00
60) 1,4-Dichlorobenzene-d4	11.84	152	75204	5.00	ug/L	0.00

System Monitoring Compounds

4) Vinyl Chloride-d3	1.62	65	125290	4.84	ug/L	0.00
Spiked Amount	5.000	Range	40 - 130	Recovery	=	96.80%
7) Chloroethane-d5	1.93	69	105062	4.99	ug/L	0.00
Spiked Amount	5.000	Range	65 - 130	Recovery	=	99.80%
11) 1,1-Dichloroethene-d2	2.59	63	154920	3.64	ug/L	0.00
Spiked Amount	5.000	Range	60 - 125	Recovery	=	72.80%
20) 2-Butanone-d5	4.70	46	252150	49.15	ug/L	0.00
Spiked Amount	50.000	Range	40 - 130	Recovery	=	98.30%
24) Chloroform-d	5.11	84	166653	4.48	ug/L	0.00
Spiked Amount	5.000	Range	70 - 125	Recovery	=	89.60%
26) 1,2-Dichloroethane-d4	5.75	65	103197	5.11	ug/L	0.00
Spiked Amount	5.000	Range	70 - 130	Recovery	=	102.20%
32) Benzene-d6	5.77	84	381690	4.95	ug/L	0.00
Spiked Amount	5.000	Range	70 - 125	Recovery	=	99.00%
36) 1,2-Dichloropropane-d6	6.74	67	126462	5.01	ug/L	0.00
Spiked Amount	5.000	Range	60 - 140	Recovery	=	100.20%
41) Toluene-d8	7.93	98	317402	4.52	ug/L	0.00
Spiked Amount	5.000	Range	70 - 130	Recovery	=	90.40%
43) trans-1,3-Dichloropropene-	8.22	79	44003	4.48	ug/L	0.00
Spiked Amount	5.000	Range	55 - 130	Recovery	=	89.60%
46) 2-Hexanone-d5	8.70	63	179666	47.27	ug/L	0.02
Spiked Amount	50.000	Range	45 - 130	Recovery	=	94.54%
57) 1,1,2,2-Tetrachloroethane-	10.79	84	97599	4.72	ug/L	0.00
Spiked Amount	5.000	Range	65 - 120	Recovery	=	94.40%
64) 1,2-Dichlorobenzene-d4	12.22	152	85830	5.65	ug/L	0.00
Spiked Amount	5.000	Range	80 - 120	Recovery	=	113.00%

Target Compounds

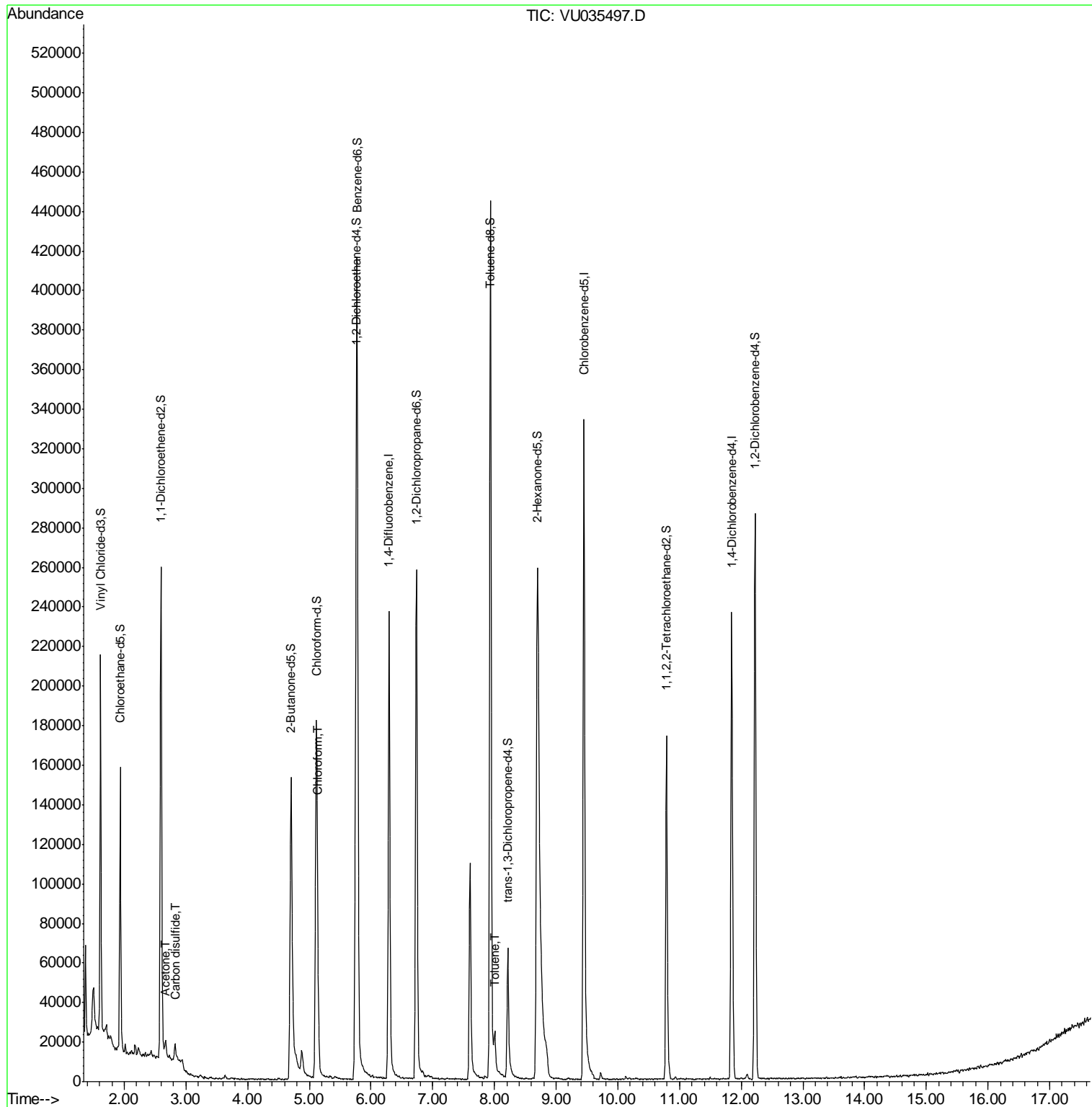
Target Compounds	R.T.	QIon	Response	Conc	Units	Ovalue
13) Acetone	2.67	43	7587	1.947	ug/L	94
14) Carbon disulfide	2.82	76	10133	0.154	ug/L #	85
25) Chloroform	5.14	83	22904	0.542	ug/L	95
42) Toluene	8.01	91	12132	0.135	ug/L	98

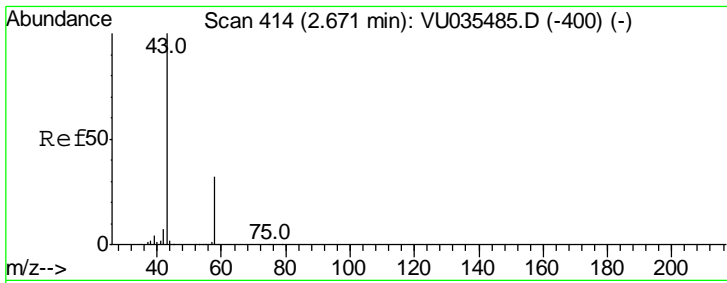
(#) = qualifier out of range (m) = manual integration (+) = signals summed

Data Path : Z:\VOASRV\HPCHEM1\MSVOA U\DATA\VU102519\
 Data File : VU035497.D
 Acq On : 25 Oct 2019 19:36
 Operator : JC/SP
 Sample : K5554-06
 Misc : 25.0mL/MSVOA U/WATER
 ALS Vial : 24 Sample Multiplier: 1

Instrument :
 MSVOA_U
 ClientSampled :
 GAQ86

Quant Time: Oct 26 05:36:08 2019
 Quant Method : Z:\VOASRV\HPCHEM1\MSVOA_U\METHOD\SOMUTR102519WMA.M
 Quant Title : TRACE VOA SOM01.0
 QLast Update : Sat Oct 26 04:07:11 2019
 Response via : Initial Calibration

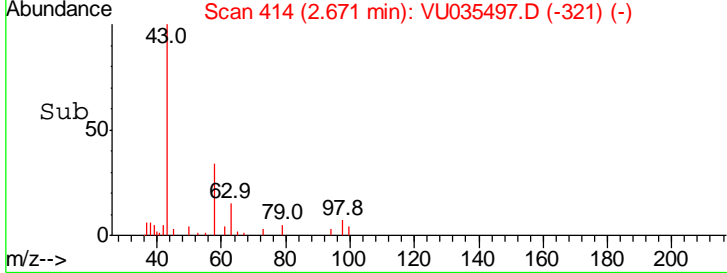
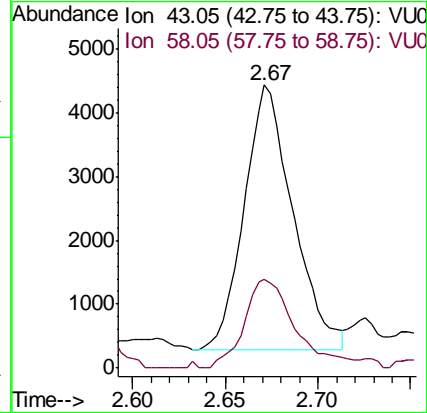
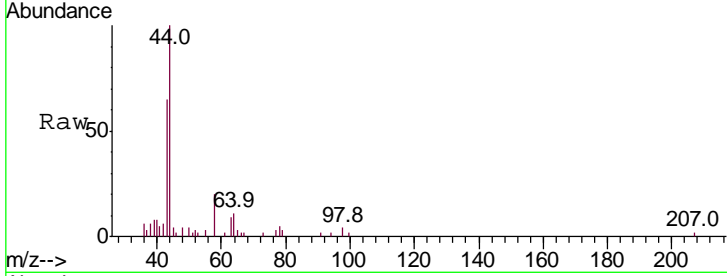




#13
 Acetone
 Concen: 1.947 ug/L
 RT: 2.67 min Scan# 414
 Delta R.T. -0.00 min
 Lab File: VU035497.D
 Acq: 25 Oct 2019 19:36

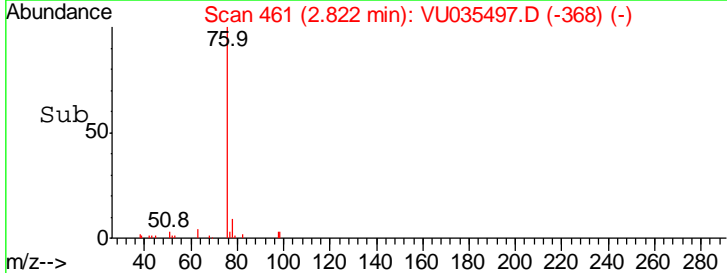
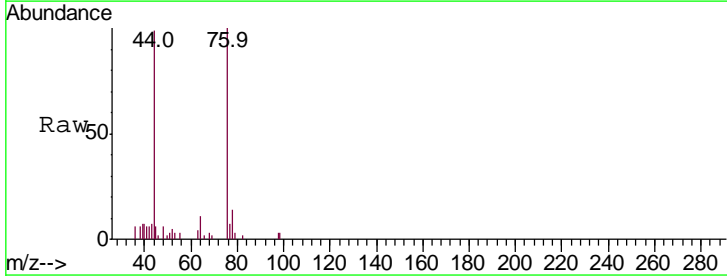
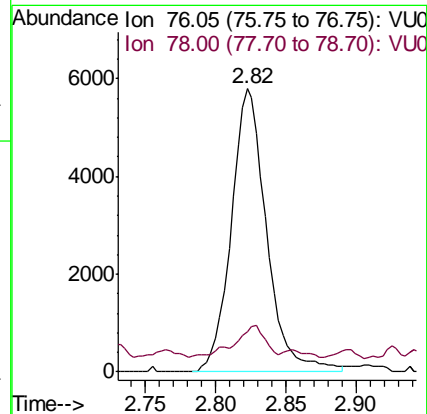
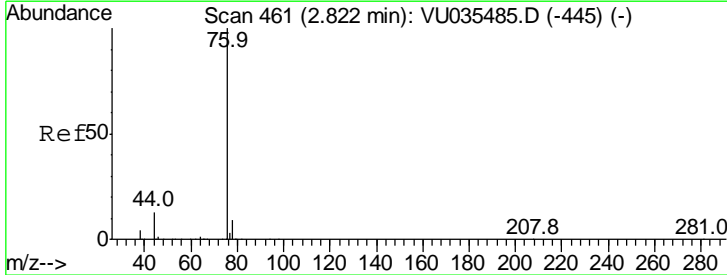
Instrument :
 MSVOA_U
ClientSampled :
 GAQ86

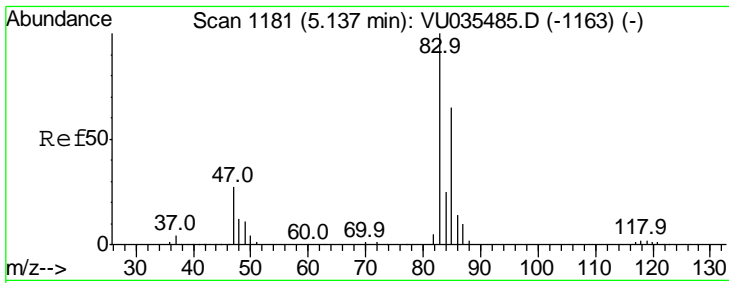
Tgt Ion	Ratio	Lower	Upper
43	100		
58	34.9	0.0	63.2



#14
 Carbon disulfide
 Concen: 0.154 ug/L
 RT: 2.82 min Scan# 461
 Delta R.T. -0.00 min
 Lab File: VU035497.D
 Acq: 25 Oct 2019 19:36

Tgt Ion	Ratio	Lower	Upper
76	100		
78	14.4	7.3	10.9#

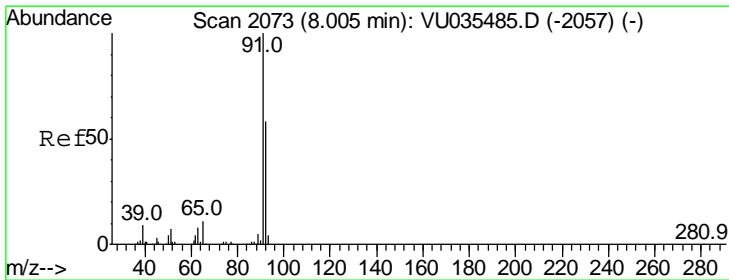
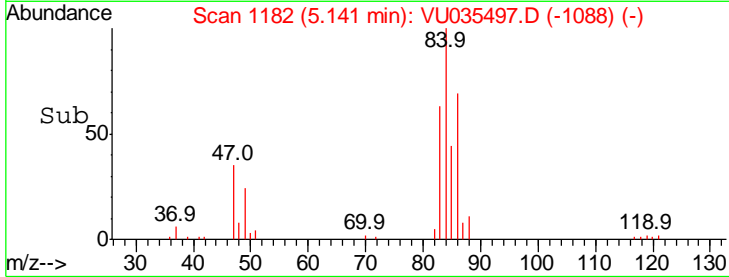
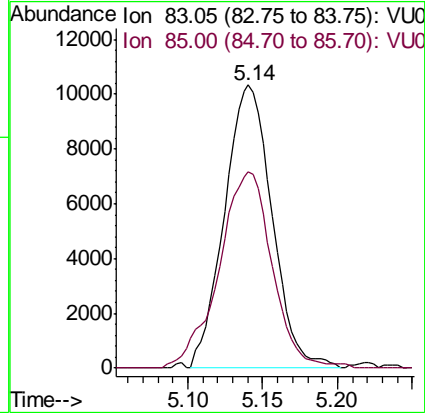
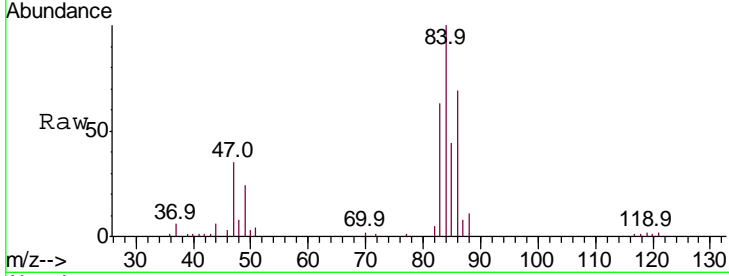




#25
 Chloroform
 Concen: 0.542 ug/L
 RT: 5.14 min Scan# 1182
 Delta R.T. 0.00 min
 Lab File: VU035497.D
 Acq: 25 Oct 2019 19:36

Instrument :
 MSVOA_U
 ClientSampled :
 GAQ86

Tgt Ion	Resp	Lower	Upper
83	100		
85	69.6	45.7	84.9



#42
 Toluene
 Concen: 0.135 ug/L
 RT: 8.01 min Scan# 2073
 Delta R.T. -0.00 min
 Lab File: VU035497.D
 Acq: 25 Oct 2019 19:36

Tgt Ion	Resp	Lower	Upper
91	100		
92	57.0	40.9	75.9

