

Data File : VU027828.D
 Acq On : 26 Oct 2018 13:09
 Operator : MD/SY
 Sample : J5668-02
 Misc : 5.0mL/MSVOA_U/WATER
 ALS Vial : 12 Sample Multiplier: 1

Instrument :
 MSVOA_U
 ClientSampleId :
 ETBP8

Quant Time: Oct 27 01:45:50 2018
 Quant Method : Z:\VOASRV\HPCHEM1\MSVOA_U\METHOD\SOMULM102218WMA.M
 Quant Title : VOC Analysis
 QLast Update : Sat Oct 27 01:41:17 2018
 Response via : Initial Calibration

Internal Standards	R.T.	QIon	Response	Conc	Units	Dev(Min)
1) 1,4-Difluorobenzene	5.89	114	108110	50.00	ug/L	0.00
28) Chlorobenzene-d5	9.09	117	102535	50.00	ug/L	0.00
60) 1,4-Dichlorobenzene-d4	11.48	152	49477	50.00	ug/L	0.00

System Monitoring Compounds

4) Vinyl Chloride-d3	1.40	65	30030	35.70	ug/L	0.00
Spiked Amount	50.000	Range	60 - 135	Recovery	=	71.40%
7) Chloroethane-d5	1.68	69	24964	38.55	ug/L	0.00
Spiked Amount	50.000	Range	70 - 130	Recovery	=	77.10%
11) 1,1-Dichloroethene-d2	2.27	63	45357	29.94	ug/L	0.00
Spiked Amount	50.000	Range	60 - 125	Recovery	=	59.88%#
21) 2-Butanone-d5	4.18	46	69054	96.33	ug/L	0.00
Spiked Amount	100.000	Range	40 - 130	Recovery	=	96.33%
24) Chloroform-d	4.65	84	64221	42.47	ug/L	0.00
Spiked Amount	50.000	Range	70 - 125	Recovery	=	84.94%
26) 1,2-Dichloroethane-d4	5.31	65	46702	44.60	ug/L	0.00
Spiked Amount	50.000	Range	70 - 125	Recovery	=	89.20%
32) Benzene-d6	5.34	84	120950	41.42	ug/L	0.00
Spiked Amount	50.000	Range	70 - 125	Recovery	=	82.84%
36) 1,2-Dichloropropane-d6	6.33	67	45049	43.21	ug/L	0.00
Spiked Amount	50.000	Range	70 - 120	Recovery	=	86.42%
41) Toluene-d8	7.57	98	111447	41.38	ug/L	0.00
Spiked Amount	50.000	Range	80 - 120	Recovery	=	82.76%
43) trans-1,3-Dichloropropene-	7.85	79	20720	40.93	ug/L	0.00
Spiked Amount	50.000	Range	60 - 125	Recovery	=	81.86%
47) 2-Hexanone-d5	8.31	63	51133	95.84	ug/L	0.00
Spiked Amount	100.000	Range	45 - 130	Recovery	=	95.84%
57) 1,1,2,2-Tetrachloroethane-	10.43	84	59843	44.45	ug/L	0.00
Spiked Amount	50.000	Range	65 - 120	Recovery	=	88.90%
64) 1,2-Dichlorobenzene-d4	11.86	152	43311	42.74	ug/L	0.00
Spiked Amount	50.000	Range	80 - 120	Recovery	=	85.48%

Target Compounds

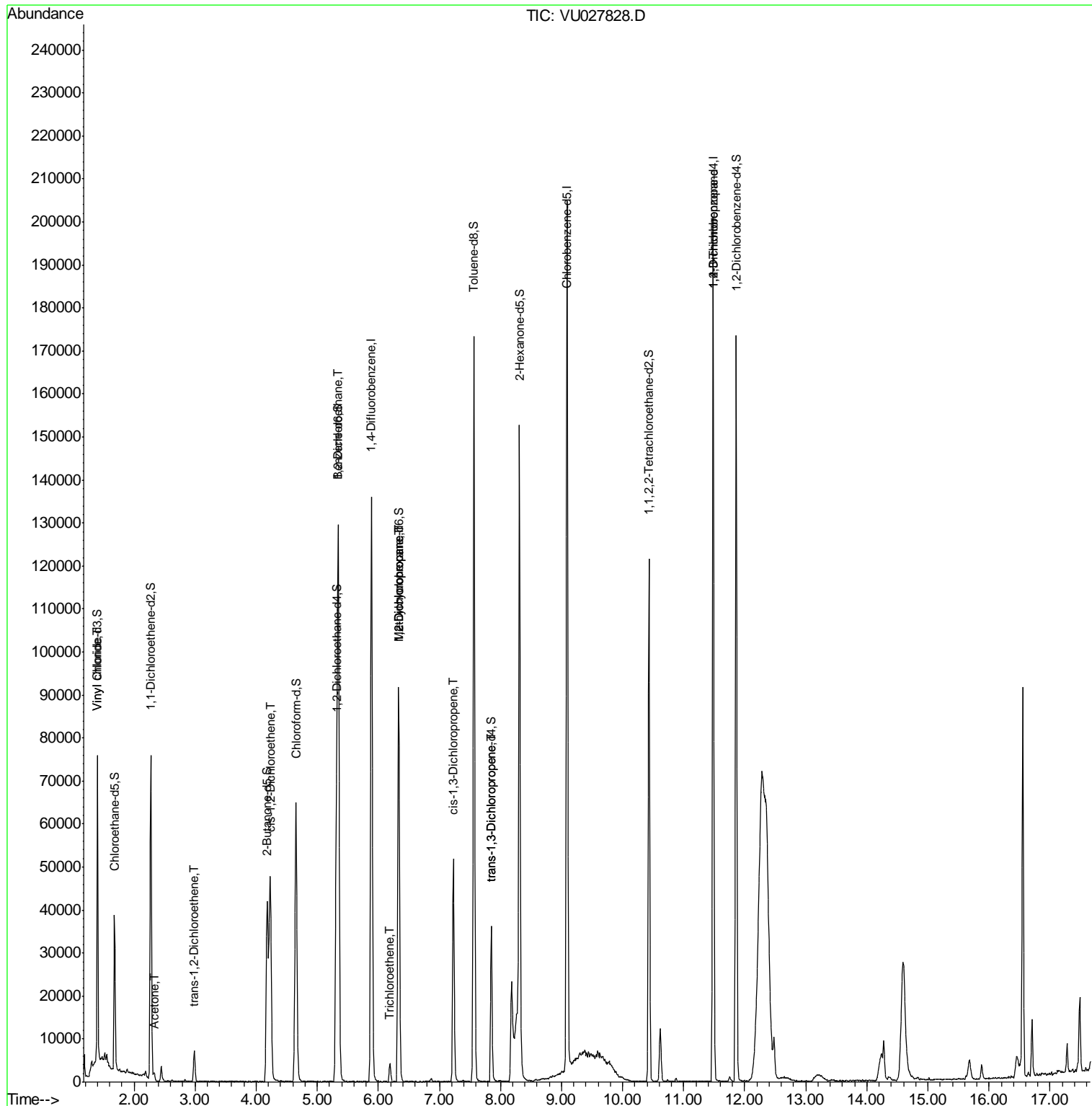
					Qvalue	
5) Vinyl chloride	1.40	62	16891	17.301	ug/L #	68
13) Acetone	2.32	43	1819	3.643	ug/L	76
17) trans-1,2-Dichloroethene	2.99	96	2630	3.947	ug/L	96
20) cis-1,2-Dichloroethene	4.23	96	24028	30.479	ug/L	100
27) 1,2-Dichloroethane	5.35	62	666	0.547	ug/L #	78
34) Trichloroethene	6.19	95	1715	2.246	ug/L	95
35) Methylcyclohexane	6.33	83	10076	7.630	ug/L #	14
37) 1,2-Dichloropropane	6.33	63	4973	5.518	ug/L #	90
39) cis-1,3-Dichloropropene	7.23	75	1211	0.873	ug/L #	68
44) trans-1,3-Dichloropropene	7.85	75	798	0.608	ug/L	87
59) 1,2,3-Trichloropropane	11.48	75	6252	5.870	ug/L	91

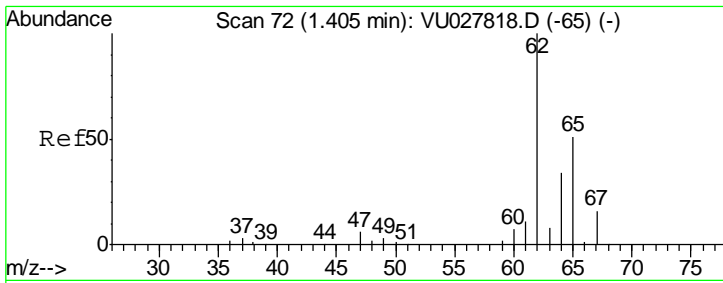
(#) = qualifier out of range (m) = manual integration (+) = signals summed

Data File : VU027828.D
Acq On : 26 Oct 2018 13:09
Operator : MD/SY
Sample : J5668-02
Misc : 5.0mL/MSVOA_U/WATER
ALS Vial : 12 Sample Multiplier: 1

Instrument :
MSVOA_U
Client Sampled :
ETBP8

Quant Time: Oct 27 01:45:50 2018
Quant Method : Z:\VOASRV\HPCHEM1\MSVOA_U\METHOD\SOMULM102218WMA.M
Quant Title : VOC Analysis
QLast Update : Sat Oct 27 01:41:17 2018
Response via : Initial Calibration

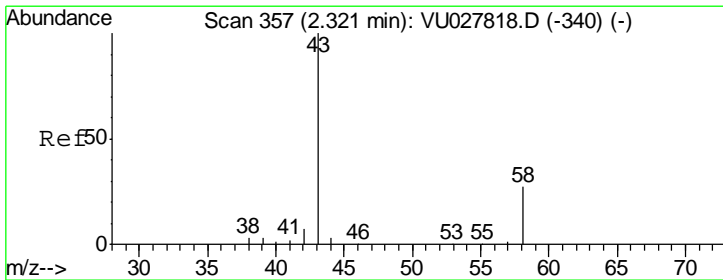
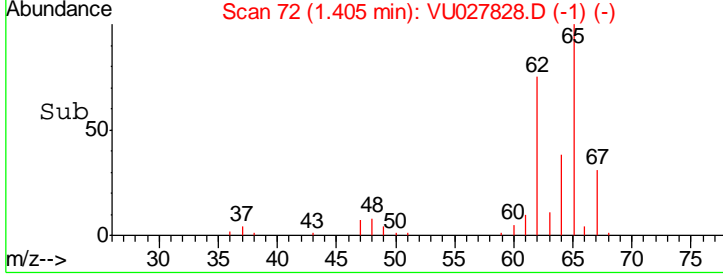
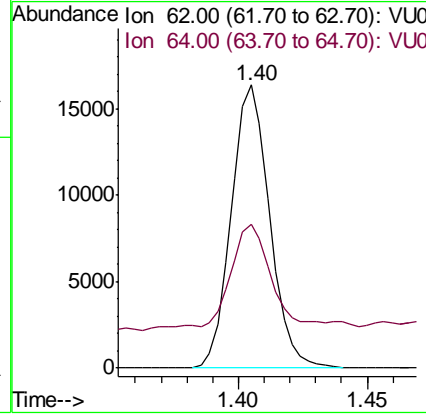
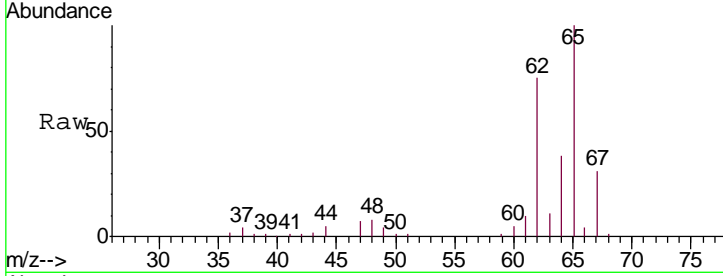




#5
 Vinyl chloride
 Concen: 17.301 ug/L
 RT: 1.40 min Scan# 72
 Delta R.T. -0.00 min
 Lab File: VU027828.D
 Acq: 26 Oct 2018 13:09

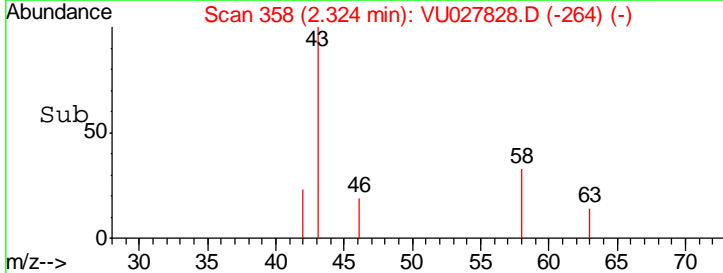
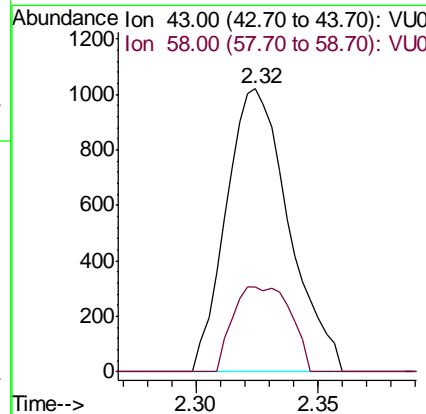
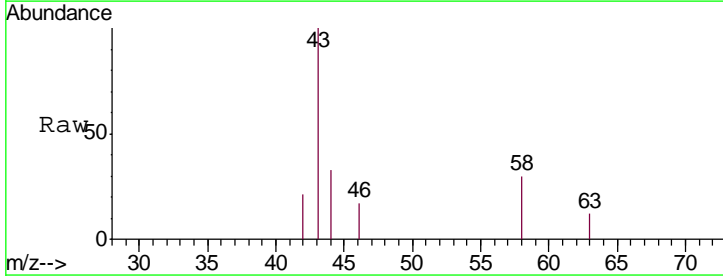
Instrument : MSVOA_U
 ClientSampled : ETBP8

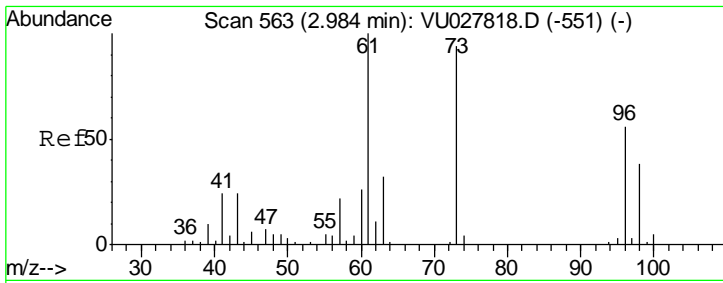
Tgt Ion: 62 Resp: 16891
 Ion Ratio Lower Upper
 62 100
 64 51.0 23.0 42.8#



#13
 Acetone
 Concen: 3.643 ug/L
 RT: 2.32 min Scan# 358
 Delta R.T. 0.00 min
 Lab File: VU027828.D
 Acq: 26 Oct 2018 13:09

Tgt Ion: 43 Resp: 1819
 Ion Ratio Lower Upper
 43 100
 58 15.7 0.0 57.4



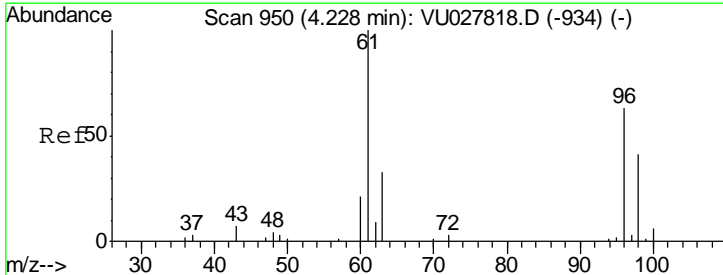
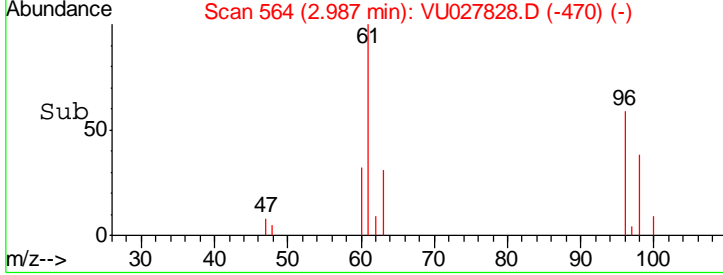
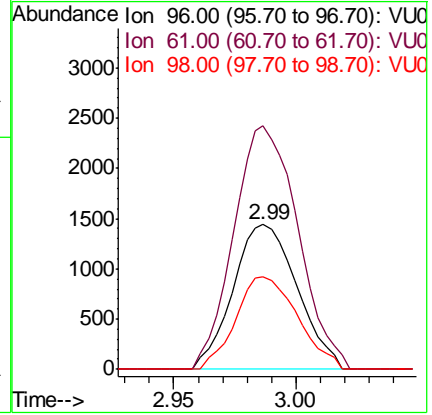
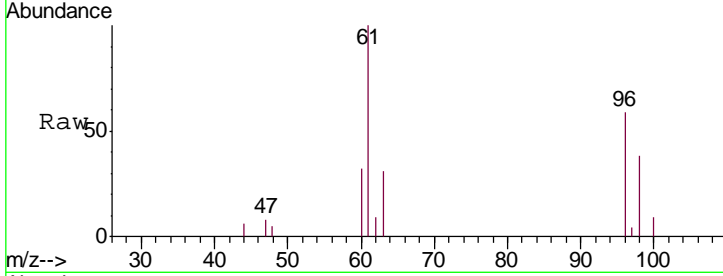


#17
 trans-1,2-Dichloroethene
 Concen: 3.947 ug/L
 RT: 2.99 min Scan# 564
 Delta R.T. 0.00 min
 Lab File: VU027828.D
 Acq: 26 Oct 2018 13:09

Instrument : MSVOA_U
 ClientSampled : VU027828.D
 ETBP8

Tgt Ion: 96 Resp: 2630

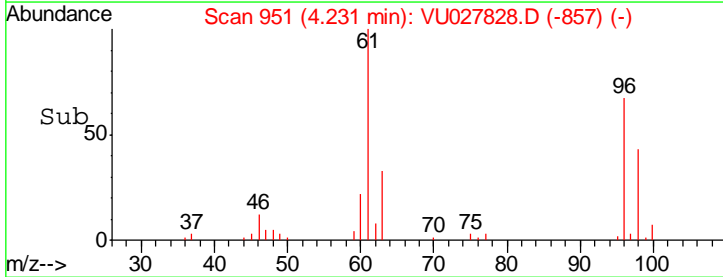
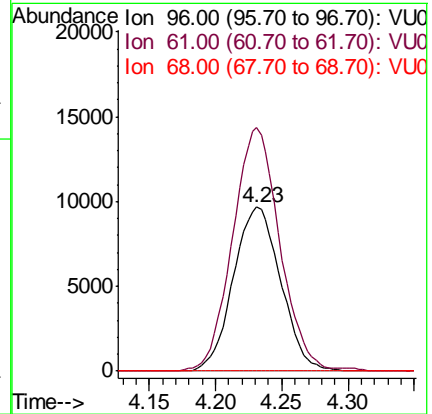
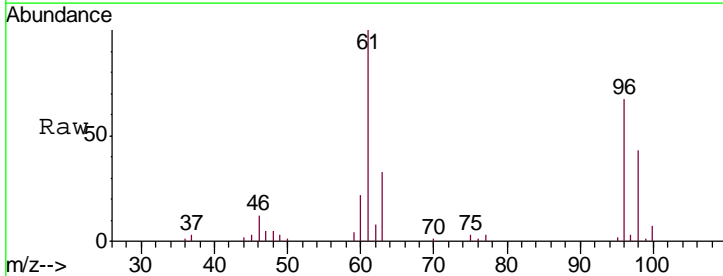
Ion	Ratio	Lower	Upper
96	100		
61	168.5	114.7	212.9
98	64.4	42.2	78.4

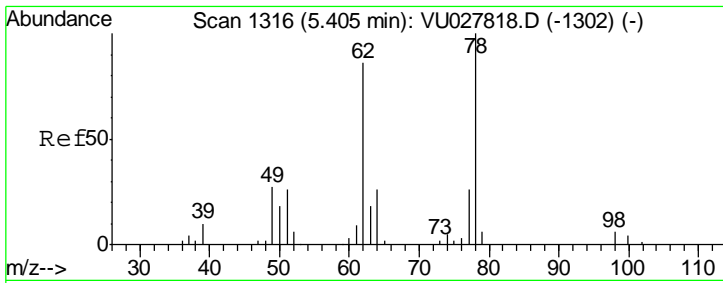


#20
 cis-1,2-Dichloroethene
 Concen: 30.479 ug/L
 RT: 4.23 min Scan# 951
 Delta R.T. 0.00 min
 Lab File: VU027828.D
 Acq: 26 Oct 2018 13:09

Tgt Ion: 96 Resp: 24028

Ion	Ratio	Lower	Upper
96	100		
61	148.6	104.2	193.4
68	0.0	0.0	0.0

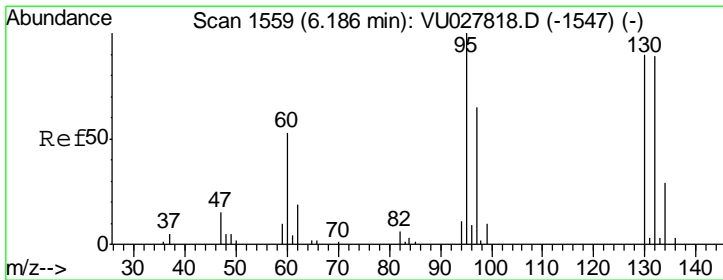
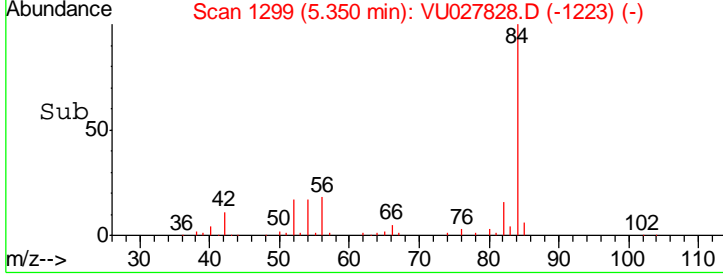
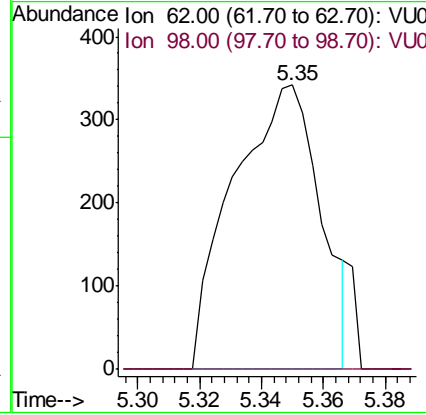
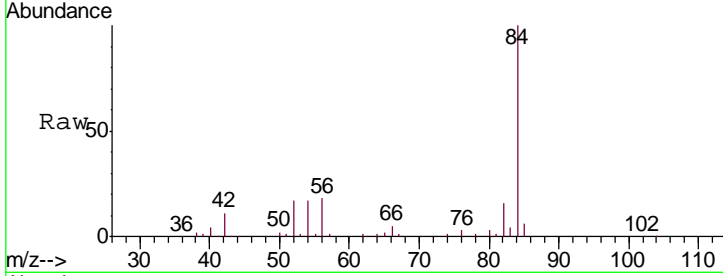




#27
 1,2-Dichloroethane
 Concen: 0.547 ug/L
 RT: 5.35 min Scan# 1299
 Delta R.T. -0.05 min
 Lab File: VU027828.D
 Acq: 26 Oct 2018 13:09

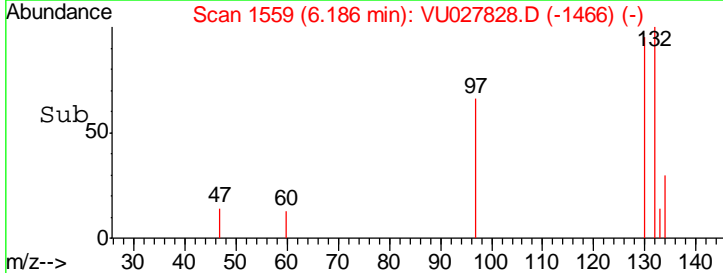
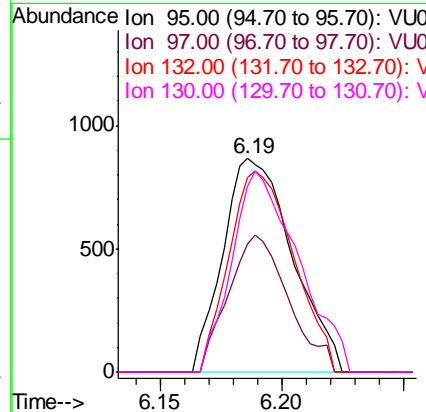
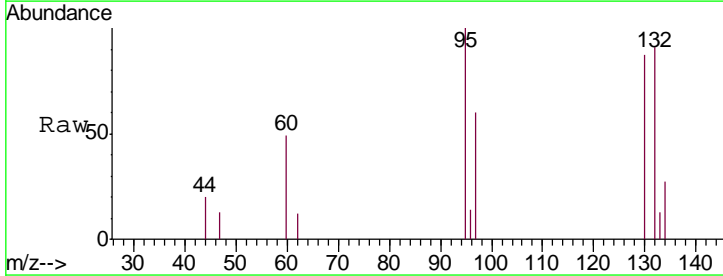
Instrument : MSVOA_U
 ClientSampled : ETBP8

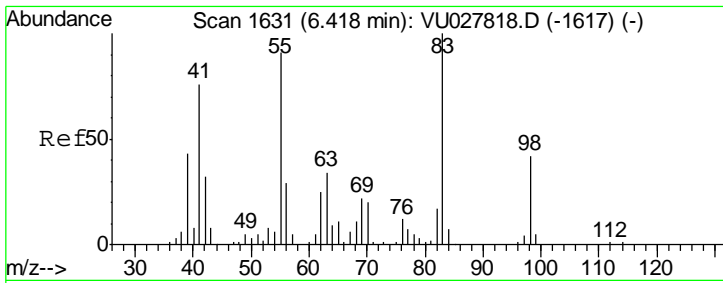
Tgt Ion	Resp	Lower	Upper
62	100		
98	0.0	6.3	9.5#



#34
 Trichloroethene
 Concen: 2.246 ug/L
 RT: 6.19 min Scan# 1559
 Delta R.T. -0.00 min
 Lab File: VU027828.D
 Acq: 26 Oct 2018 13:09

Tgt Ion	Resp	Lower	Upper
95	100		
97	60.1	45.8	85.2
132	91.2	62.1	115.3
130	86.6	65.0	120.6

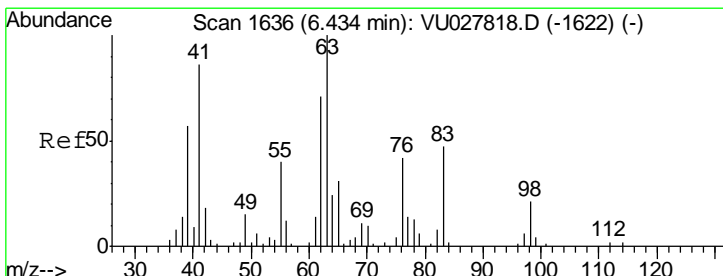
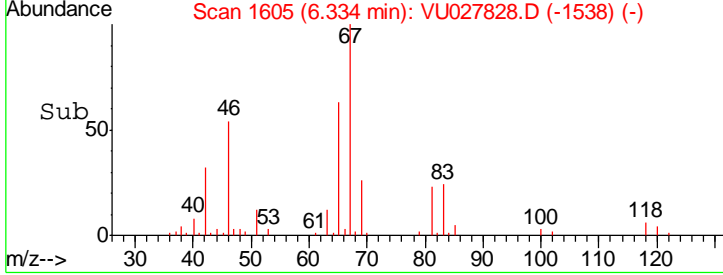
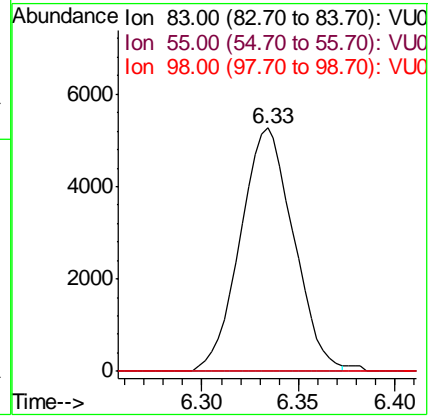
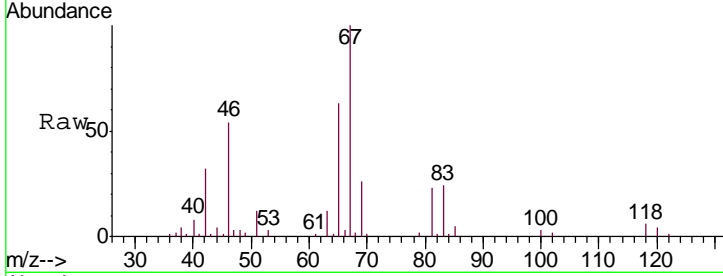




#35
 Methylcyclohexane
 Concen: 7.630 ug/L
 RT: 6.33 min Scan# 1605
 Delta R.T. -0.08 min
 Lab File: VU027828.D
 Acq: 26 Oct 2018 13:09

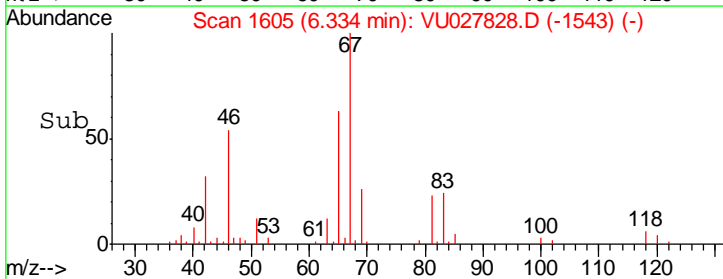
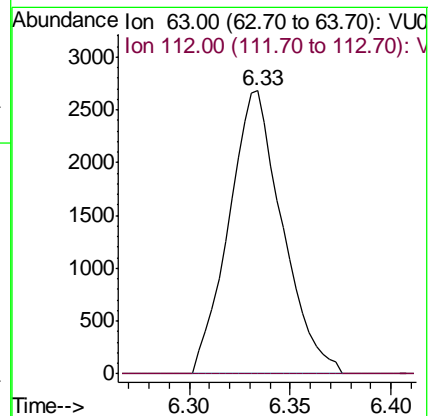
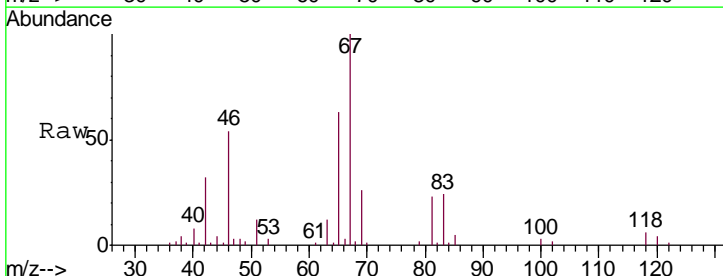
Instrument : MSVOA_U
 ClientSampled : ETBP8

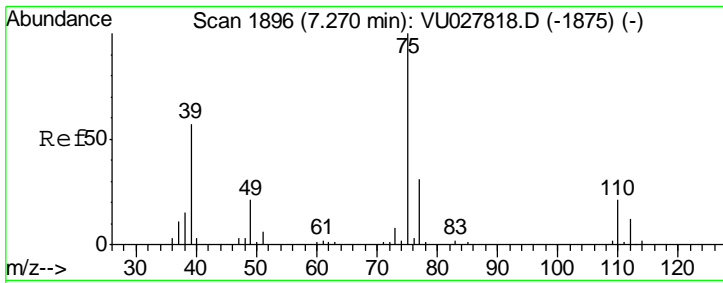
Tgt Ion	Resp	Lower	Upper
83	10076		
55	0.0	71.9	107.9#
98	0.0	34.6	52.0#



#37
 1,2-Dichloropropane
 Concen: 5.518 ug/L
 RT: 6.33 min Scan# 1605
 Delta R.T. -0.10 min
 Lab File: VU027828.D
 Acq: 26 Oct 2018 13:09

Tgt Ion	Resp	Lower	Upper
63	4973		
112	0.0	2.6	3.8#

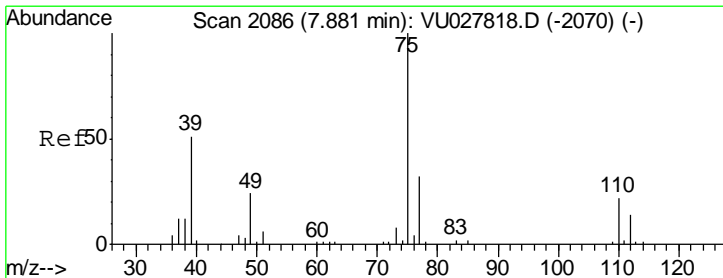
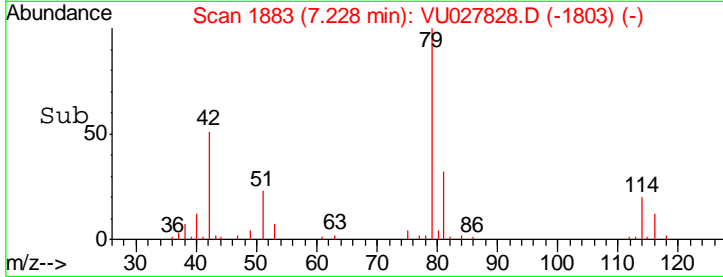
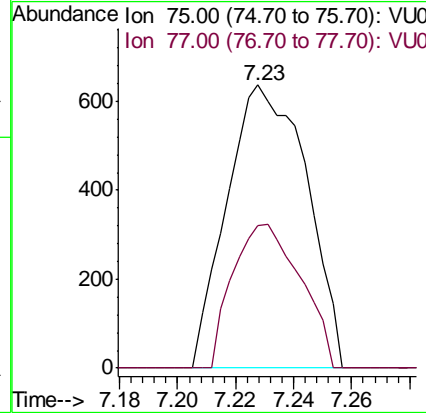
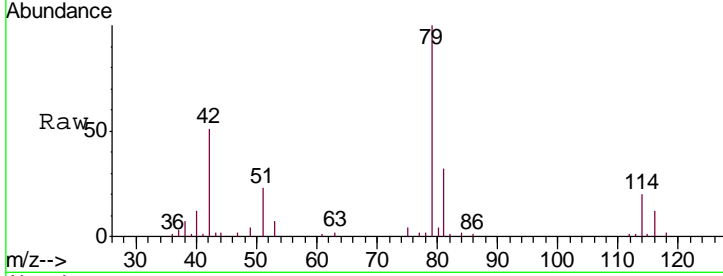




#39
 cis-1,3-Dichloropropene
 Concen: 0.873 ug/L
 RT: 7.23 min Scan# 1883
 Delta R.T. -0.04 min
 Lab File: VU027828.D
 Acq: 26 Oct 2018 13:09

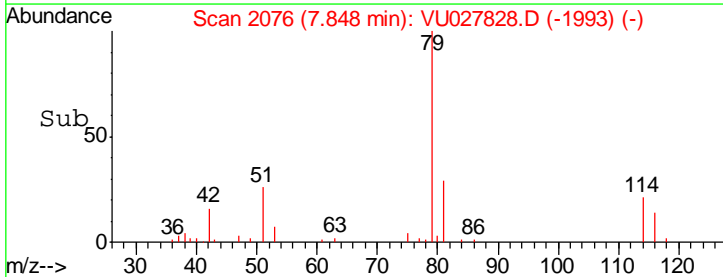
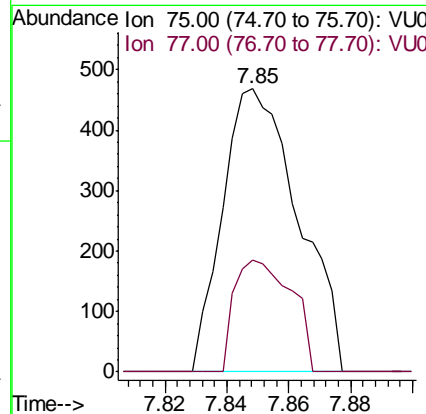
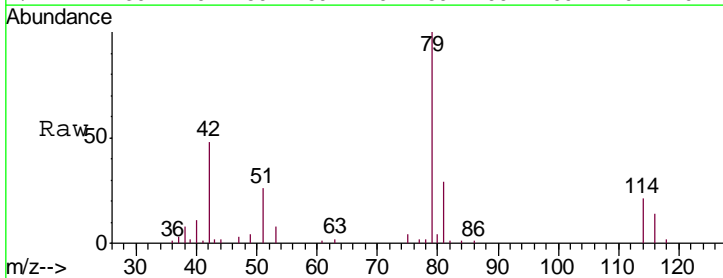
Instrument : MSVOA_U
 ClientSampled : ETBP8

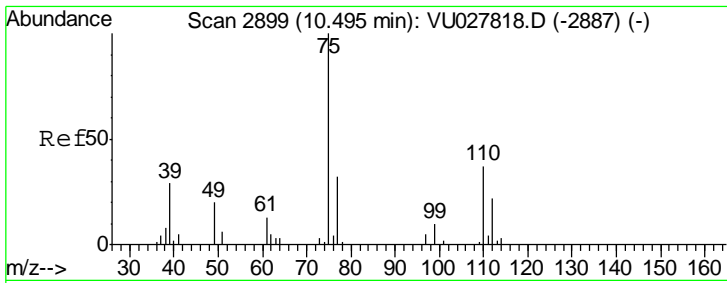
Tgt Ion: 75 Resp: 1211
 Ion Ratio Lower Upper
 75 100
 77 50.2 22.5 41.7#



#44
 trans-1,3-Dichloropropene
 Concen: 0.608 ug/L
 RT: 7.85 min Scan# 2076
 Delta R.T. -0.03 min
 Lab File: VU027828.D
 Acq: 26 Oct 2018 13:09

Tgt Ion: 75 Resp: 798
 Ion Ratio Lower Upper
 75 100
 77 39.7 22.8 42.4

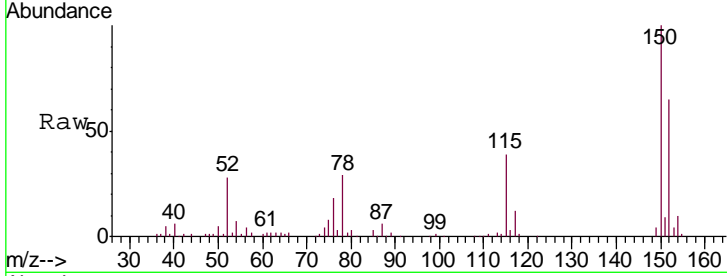




#59
 1,2,3-Trichloropropane
 Concen: 5.870 ug/L
 RT: 11.48 min Scan# 3206
 Delta R.T. 0.99 min
 Lab File: VU027828.D
 Acq: 26 Oct 2018 13:09

Instrument :
 MSVOA_U
 ClientSampled :
 ETBP8

Tgt Ion: 75 Resp: 6252
 Ion Ratio Lower Upper
 75 100
 77 38.2 26.5 39.7



Abundance Ion 75.00 (74.70 to 75.70): VU0
 Ion 77.00 (76.70 to 77.70): VU0

