

Data Path : Z:\VOASRV\HPCHEM1\MSVOA U\DATA\VU102618\
 Data File : VU027827.D
 Acq On : 26 Oct 2018 12:46
 Operator : MD/SY
 Sample : J5668-01
 Misc : 5.0mL/MSVOA U/WATER
 ALS Vial : 11 Sample Multiplier: 1

Instrument :
 MSVOA_U
 ClientSampleId :
 ETBP7

Integration Parameters: LSCINT.P

Integrator: RTE
 Smoothing : OFF
 Sampling : 1
 Start Thrs: 0.2
 Stop Thrs : 0

Filtering: 5
 Min Area: 0 % of largest Peak
 Max Peaks: 100
 Peak Location: TOP

If leading or trailing edge < 100 prefer < Baseline drop else tangent >
 Peak separation: 5

Method : Z:\VOASRV\HPCHEM1\MSVOA_U\METHOD\SOMULM102218WMA.M
 Title : VOC Analysis

Signal : TIC

peak #	R.T. min	first scan	max scan	last scan	PK TY	peak height	corr. area	corr. % max.	% of total
1	1.344	36	53	55	rBV3	16790	41995	11.04%	1.018%
2	1.399	65	70	80	rVB2	53758	56416	14.83%	1.368%
3	1.681	152	158	171	rVB	36616	48607	12.77%	1.178%
4	2.273	332	342	354	rBV	74010	111830	29.39%	2.711%
5	2.379	368	375	382	rVB5	1060	1589	0.42%	0.039%
6	2.447	387	396	403	rBV2	2836	4303	1.13%	0.104%
7	2.987	557	564	583	rVB3	2335	3965	1.04%	0.096%
8	3.312	662	665	668	rBV2	180	153	0.04%	0.004%
9	3.492	714	721	724	rBV	167	246	0.06%	0.006%
10	3.755	801	803	806	rBV	160	127	0.03%	0.003%
11	4.022	877	886	889	rBB	154	279	0.07%	0.007%
12	4.045	889	893	899	rBB	219	246	0.06%	0.006%
13	4.083	900	905	907	rBV	189	201	0.05%	0.005%
14	4.180	921	935	940	rBV2	40099	82853	21.77%	2.009%
15	4.350	985	988	991	rVV2	195	150	0.04%	0.004%
16	4.405	997	1005	1009	rVB3	284	495	0.13%	0.012%
17	4.649	1066	1081	1110	rBV	62464	147458	38.75%	3.575%
18	4.749	1110	1112	1116	rBV2	138	120	0.03%	0.003%
19	4.832	1135	1138	1140	rBV	197	163	0.04%	0.004%
20	4.874	1148	1151	1153	rBV	179	155	0.04%	0.004%
21	4.900	1156	1159	1162	rVB	169	121	0.03%	0.003%
22	4.945	1171	1173	1176	rBV	154	130	0.03%	0.003%
23	5.247	1263	1267	1269	rBV	162	165	0.04%	0.004%
24	5.344	1273	1297	1325	rVV2	126118	380510	100.00%	9.225%
25	5.656	1391	1394	1397	rBV	188	168	0.04%	0.004%
26	5.800	1436	1439	1443	rVB2	341	316	0.08%	0.008%
27	5.887	1453	1466	1489	rBV	136067	264849	69.60%	6.421%
28	6.025	1506	1509	1512	rBB	165	130	0.03%	0.003%
29	6.141	1541	1545	1549	rBV	132	190	0.05%	0.005%
30	6.189	1549	1560	1575	rVB2	24308	46488	12.22%	1.127%
31	6.260	1579	1582	1584	rBV	154	124	0.03%	0.003%
32	6.334	1592	1605	1628	rBV	90809	179664	47.22%	4.356%
33	6.566	1675	1677	1681	rBV	132	144	0.04%	0.003%
34	6.598	1684	1687	1693	rVB	170	217	0.06%	0.005%

Data Path : Z:\VOASRV\HPCHEM1\MSVOA U\DATA\VU102618\
 Data File : VU027827.D
 Acq On : 26 Oct 2018 12:46
 Operator : MD/SY
 Sample : J5668-01
 Misc : 5.0mL/MSVOA U/WATER
 ALS Vial : 11 Sample Multiplier: 1

Instrument :
 MSVOA_U
 ClientSampleId :
 ETBP7

Integration Parameters: LSCINT.P

Integrator: RTE
 Smoothing : OFF
 Sampling : 1
 Start Thrs: 0.2
 Stop Thrs : 0

Filtering: 5
 Min Area: 0 % of largest Peak
 Max Peaks: 100
 Peak Location: TOP

If leading or trailing edge < 100 prefer < Baseline drop else tangent >
 Peak separation: 5

Method : Z:\VOASRV\HPCHEM1\MSVOA_U\METHOD\SOMULM102218WMA.M
 Title : VOC Analysis

35	6.639	1696	1700	1706	rBB	170	209	0.05%	0.005%
36	6.672	1707	1710	1713	rBV	141	149	0.04%	0.004%
37	6.820	1755	1756	1762	rVB	245	181	0.05%	0.004%
38	6.861	1762	1769	1779	rBV3	1012	1639	0.43%	0.040%
39	6.961	1796	1800	1808	rBV	163	305	0.08%	0.007%
40	7.141	1853	1856	1858	rBV	181	151	0.04%	0.004%
41	7.228	1872	1883	1899	rBV	51569	90961	23.91%	2.205%
42	7.331	1911	1915	1918	rBB	151	159	0.04%	0.004%
43	7.392	1930	1934	1938	rVB2	224	250	0.07%	0.006%
44	7.469	1950	1958	1967	rBB3	616	1176	0.31%	0.029%
45	7.514	1968	1972	1976	rBV	133	187	0.05%	0.005%
46	7.565	1976	1988	2004	rBV	171305	291671	76.65%	7.071%
47	7.852	2067	2077	2091	rVV	36197	61166	16.07%	1.483%
48	8.183	2165	2180	2194	rBV2	31094	69729	18.33%	1.690%
49	8.311	2210	2220	2243	rVB	138444	238823	62.76%	5.790%
50	8.466	2265	2268	2271	rVB2	225	148	0.04%	0.004%
51	8.482	2271	2273	2276	rBV	252	155	0.04%	0.004%
52	8.617	2311	2315	2318	rBV2	323	327	0.09%	0.008%
53	8.774	2361	2364	2368	rBV2	394	330	0.09%	0.008%
54	9.090	2451	2462	2480	rBV	200485	332949	87.50%	8.072%
55	10.170	2795	2798	2802	rBV2	227	256	0.07%	0.006%
56	10.430	2867	2879	2897	rVB	116240	185927	48.86%	4.508%
57	10.614	2924	2936	2949	rVB	10517	19714	5.18%	0.478%
58	10.877	3010	3018	3025	rVB2	816	1248	0.33%	0.030%
59	11.154	3098	3104	3107	rBV2	278	226	0.06%	0.005%
60	11.318	3152	3155	3157	rVB2	217	124	0.03%	0.003%
61	11.482	3195	3206	3222	rBV	208074	320588	84.25%	7.772%
62	11.575	3231	3235	3239	rVB	281	260	0.07%	0.006%
63	11.752	3283	3290	3297	rBV2	1719	2249	0.59%	0.055%
64	11.781	3297	3299	3304	rVB2	297	223	0.06%	0.005%
65	11.861	3312	3324	3339	rBV	171304	275376	72.37%	6.676%
66	12.073	3386	3390	3392	rBV	235	181	0.05%	0.004%
67	12.286	3397	3456	3457	rBV4	77643	311854	81.96%	7.560%
68	12.880	3637	3641	3644	rBV2	215	245	0.06%	0.006%
69	13.054	3691	3695	3698	rBV	181	164	0.04%	0.004%
70	13.125	3711	3717	3719	rBV2	555	545	0.14%	0.013%
71	13.363	3786	3791	3794	rBV	182	213	0.06%	0.005%

Data Path : Z:\VOASRV\HPCHEM1\MSVOA U\DATA\VU102618\
 Data File : VU027827.D
 Acq On : 26 Oct 2018 12:46
 Operator : MD/SY
 Sample : J5668-01
 Misc : 5.0mL/MSVOA U/WATER
 ALS Vial : 11 Sample Multiplier: 1

Instrument :
 MSVOA_U
 ClientSampleId :
 ETBP7

Integration Parameters: LSCINT.P

Integrator: RTE
 Smoothing : OFF
 Sampling : 1
 Start Thrs: 0.2
 Stop Thrs : 0

Filtering: 5
 Min Area: 0 % of largest Peak
 Max Peaks: 100
 Peak Location: TOP

If leading or trailing edge < 100 prefer < Baseline drop else tangent >
 Peak separation: 5

Method : Z:\VOASRV\HPCHEM1\MSVOA_U\METHOD\SOMULM102218WMA.M
 Title : VOC Analysis

72	13.379	3794	3796	3798	rVV	275	171	0.04%	0.004%
73	13.398	3798	3802	3805	rVB2	805	678	0.18%	0.016%
74	13.601	3862	3865	3867	rBV	288	134	0.04%	0.003%
75	13.658	3881	3883	3886	rVB	283	129	0.03%	0.003%
76	13.755	3906	3913	3917	rBV	655	943	0.25%	0.023%
77	13.877	3949	3951	3954	rVB2	218	126	0.03%	0.003%
78	14.003	3987	3990	3994	rVB2	236	187	0.05%	0.005%
79	14.221	4037	4058	4059	rBV4	5324	10513	2.76%	0.255%
80	14.337	4092	4094	4097	rBV2	400	230	0.06%	0.006%
81	14.369	4097	4104	4105	rVV3	495	479	0.13%	0.012%
82	14.449	4127	4129	4131	rBV2	177	126	0.03%	0.003%
83	14.588	4150	4172	4206	rBV4	25166	112523	29.57%	2.728%
84	14.777	4229	4231	4232	rBV2	410	132	0.03%	0.003%
85	14.835	4239	4249	4255	rBV5	1709	2703	0.71%	0.066%
86	14.884	4262	4264	4269	rVB2	448	256	0.07%	0.006%
87	15.012	4298	4304	4311	rVB3	1629	2148	0.56%	0.052%
88	15.089	4324	4328	4336	rVB4	1411	1827	0.48%	0.044%
89	15.179	4353	4356	4361	rVB2	651	564	0.15%	0.014%
90	15.459	4439	4443	4446	rVB2	502	382	0.10%	0.009%
91	15.613	4483	4491	4501	rBV3	3392	6104	1.60%	0.148%
92	15.880	4563	4574	4585	rBV	4249	7049	1.85%	0.171%
93	16.086	4636	4638	4642	rVB2	541	331	0.09%	0.008%
94	16.183	4666	4668	4670	rBV	309	147	0.04%	0.004%
95	16.456	4744	4753	4757	rBV6	3137	5252	1.38%	0.127%
96	16.552	4773	4783	4795	rVB2	190202	283345	74.46%	6.869%
97	16.636	4802	4809	4817	rBV7	2020	3557	0.93%	0.086%
98	16.703	4821	4830	4843	rVB2	29806	45585	11.98%	1.105%
99	17.276	5002	5008	5020	rVB5	9291	13034	3.43%	0.316%
100	17.481	5065	5072	5085	rVB6	24200	41505	10.91%	1.006%

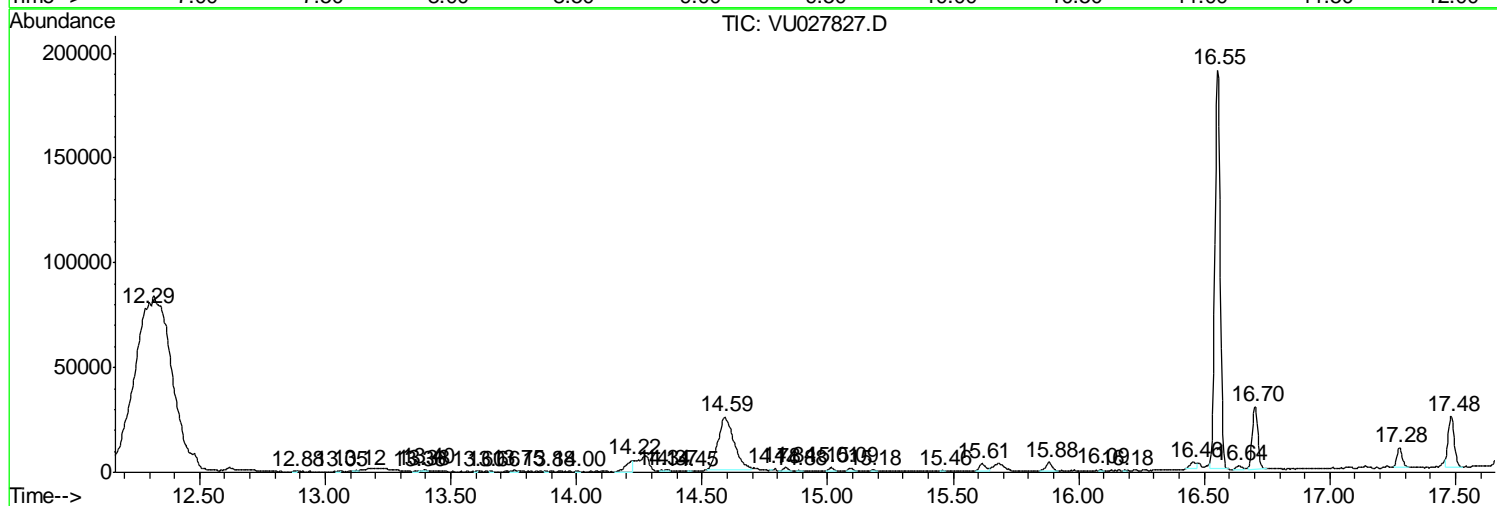
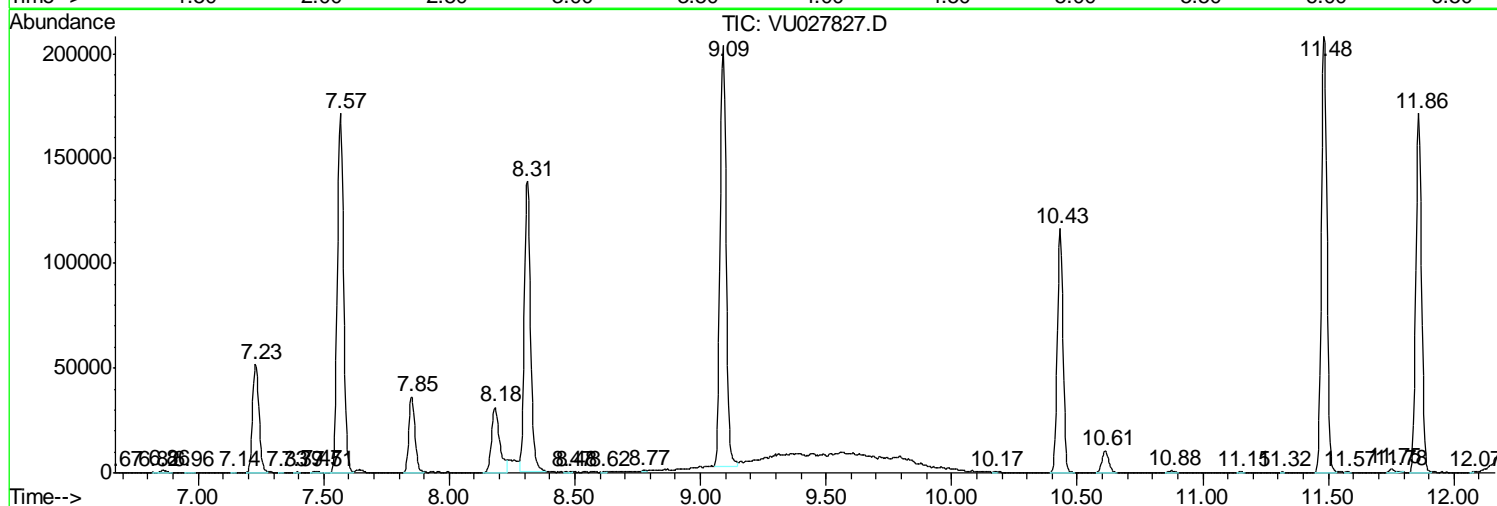
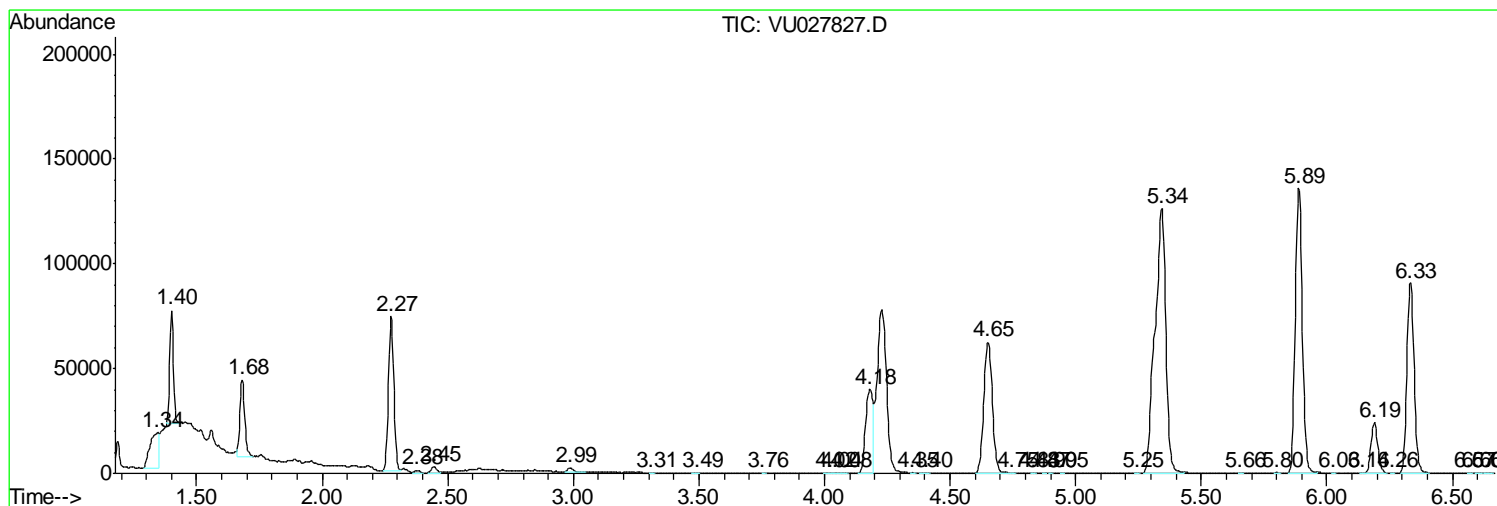
Sum of corrected areas: 4124785

Data Path : Z:\VOASRV\HPCHEM1\MSVOA U\DATA\VU102618\
 Data File : VU027827.D
 Acq On : 26 Oct 2018 12:46
 Operator : MD/SY
 Sample : J5668-01
 Misc : 5.0mL/MSVOA U/WATER
 ALS Vial : 11 Sample Multiplier: 1

Instrument :
 MSVOA_U
 ClientSampleId :
 ETBP7

Quant Method : Z:\VOASRV\HPCHEM1\MSVOA_U\METHOD\SOMULM102218WMA.M
 Quant Title : VOC Analysis

TIC Library : C:\DATABASE\NIST11.L
 TIC Integration Parameters: LSCINT.P



Data Path : Z:\VOASRV\HPCHEM1\MSVOA U\DATA\VU102618\
 Data File : VU027827.D
 Acq On : 26 Oct 2018 12:46
 Operator : MD/SY
 Sample : J5668-01
 Misc : 5.0mL/MSVOA U/WATER
 ALS Vial : 11 Sample Multiplier: 1

Instrument :
 MSVOA_U
 ClientSampled :
 ETBP7

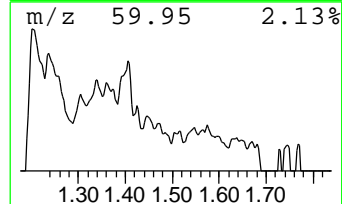
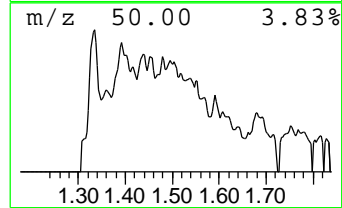
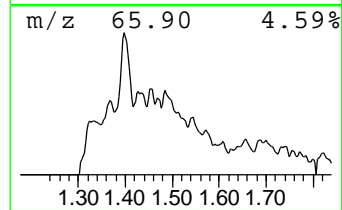
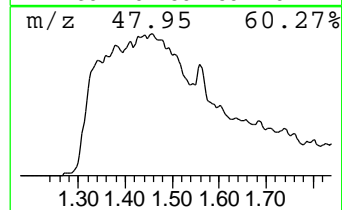
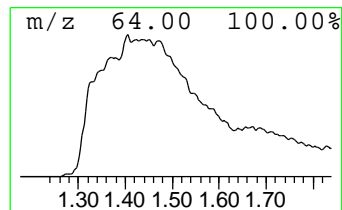
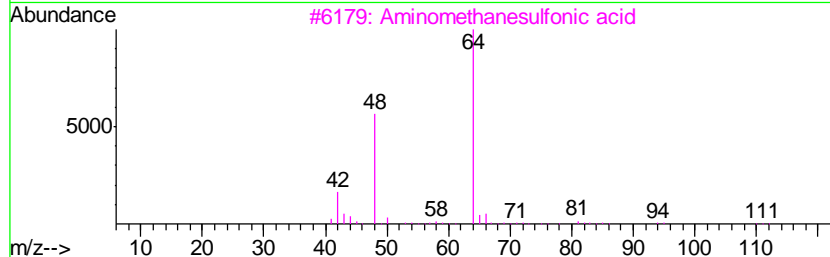
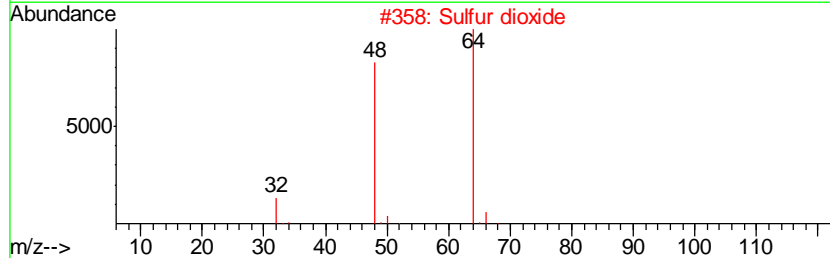
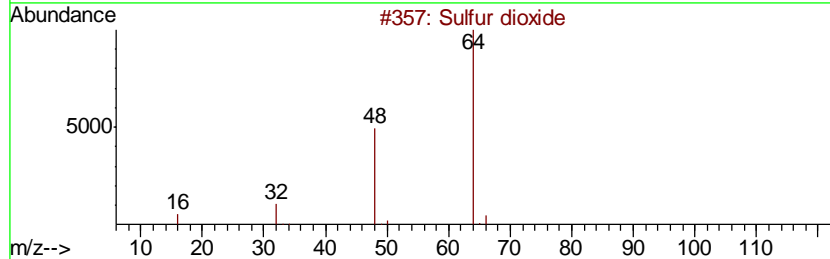
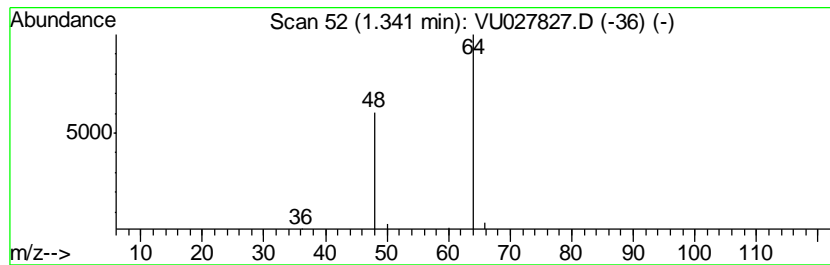
Quant Method : Z:\VOASRV\HPCHEM1\MSVOA_U\METHOD\SOMULM102218WMA.M
 Quant Title : VOC Analysis

TIC Library : C:\DATABASE\NIST11.L
 TIC Integration Parameters: LSCINT.P

 Peak Number 1 Sulfur dioxide Concentration Rank 6

R.T.	EstConc	Area	Relative to ISTD	R.T.
1.34	7.93 ug/L	41995	1,4-Difluorobenzene	5.89

Hit#	of	Tentative ID	MW	MolForm	CAS#	Qual
1	5	Sulfur dioxide	64	O2S	007446-09-5	90
2		Sulfur dioxide	64	O2S	007446-09-5	74
3		Aminomethanesulfonic acid	111	CH5NO3S	013881-91-9	9
4		Ethyl Chloride	64	C2H5Cl	000075-00-3	4
5		Ethene, 1,1-difluoro-	64	C2H2F2	000075-38-7	4



Data Path : Z:\VOASRV\HPCHEM1\MSVOA U\DATA\VU102618\
 Data File : VU027827.D
 Acq On : 26 Oct 2018 12:46
 Operator : MD/SY
 Sample : J5668-01
 Misc : 5.0mL/MSVOA U/WATER
 ALS Vial : 11 Sample Multiplier: 1

Instrument :
 MSVOA_U
 ClientSampled :
 ETBP7

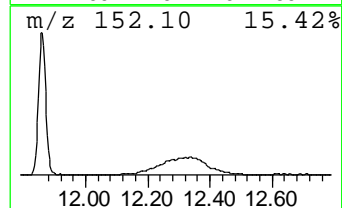
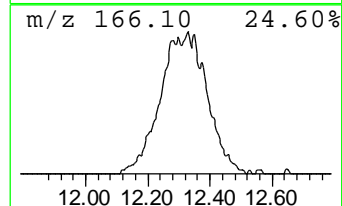
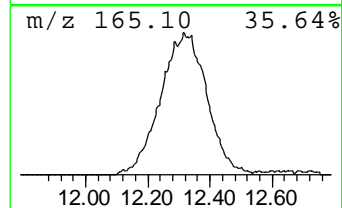
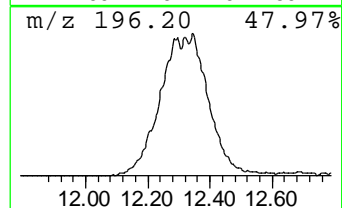
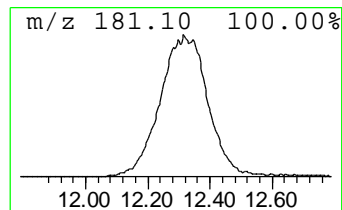
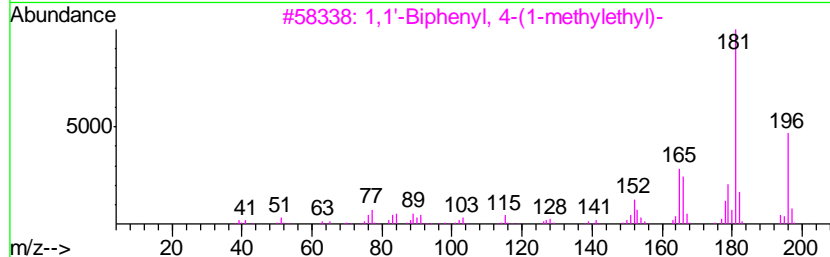
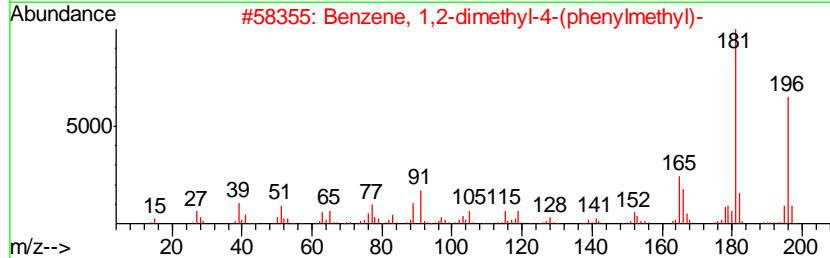
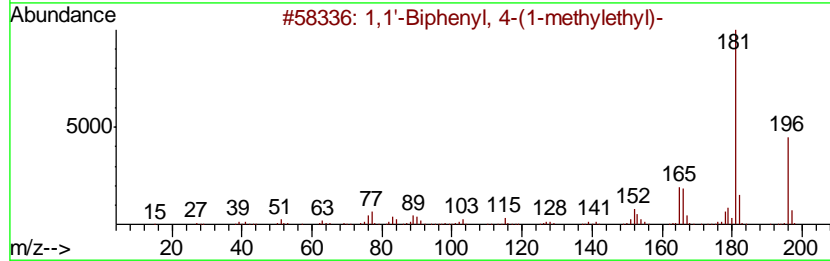
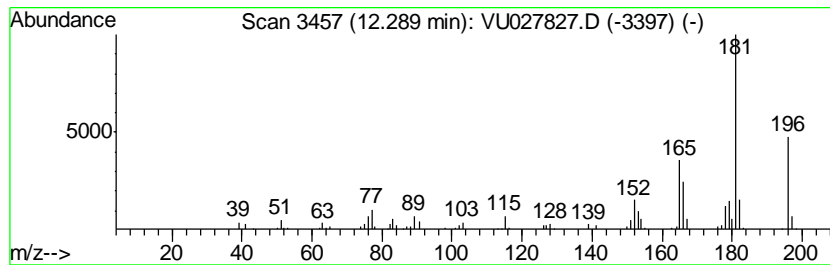
Quant Method : Z:\VOASRV\HPCHEM1\MSVOA_U\METHOD\SOMULM102218WMA.M
 Quant Title : VOC Analysis

TIC Library : C:\DATABASE\NIST11.L
 TIC Integration Parameters: LSCINT.P

 Peak Number 5 1,1'-Biphenyl, 4-(1-methyle... Concentration Rank 1

R.T.	EstConc	Area	Relative to ISTD	R.T.
12.29	48.64 ug/L	311854	1,4-Dichlorobenzene-d4	11.48

Hit#	of	Tentative ID	MW	MolForm	CAS#	Qual
1	5	1,1'-Biphenyl, 4-(1-methylethyl)-	196	C15H16	007116-95-2	97
2		Benzene, 1,2-dimethyl-4-(phenylm...	196	C15H16	013540-56-2	94
3		1,1'-Biphenyl, 4-(1-methylethyl)-	196	C15H16	007116-95-2	94
4		Methane, di-p-tolyl-	196	C15H16	004957-14-6	91
5		Benzene, 2,4-dimethyl-1-(phenylm...	196	C15H16	028122-28-3	91



Data Path : Z:\VOASRV\HPCHEM1\MSVOA U\DATA\VU102618\
 Data File : VU027827.D
 Acq On : 26 Oct 2018 12:46
 Operator : MD/SY
 Sample : J5668-01
 Misc : 5.0mL/MSVOA U/WATER
 ALS Vial : 11 Sample Multiplier: 1

Instrument :
 MSVOA_U
 ClientSampled :
 ETBP7

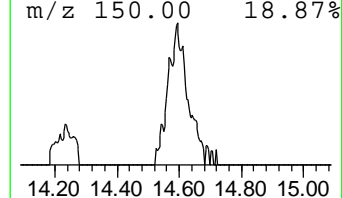
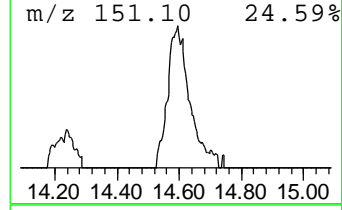
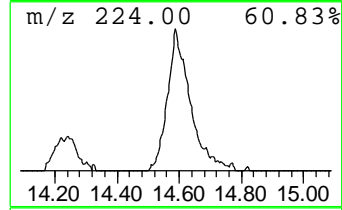
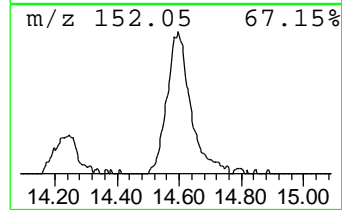
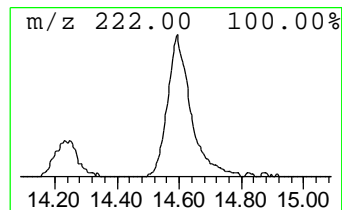
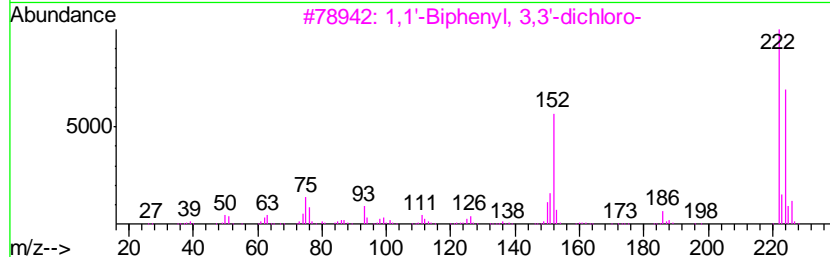
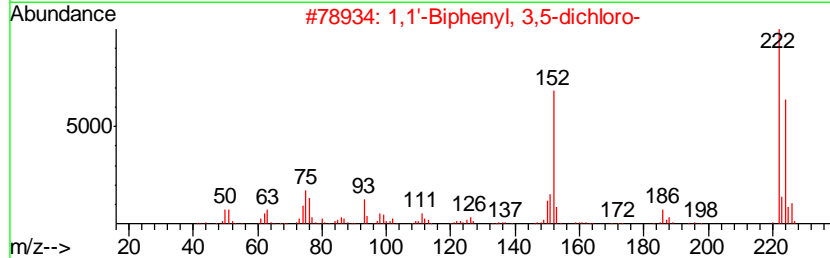
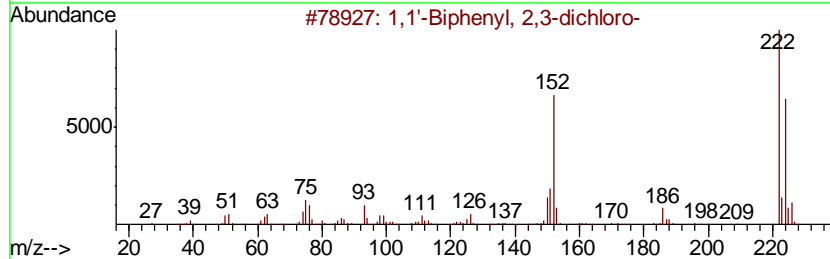
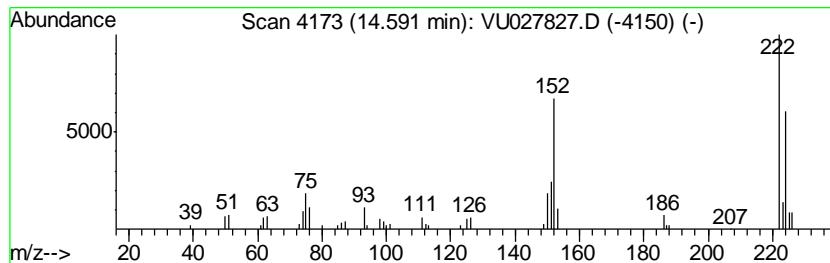
Quant Method : Z:\VOASRV\HPCHEM1\MSVOA_U\METHOD\SOMULM102218WMA.M
 Quant Title : VOC Analysis

TIC Library : C:\DATABASE\NIST11.L
 TIC Integration Parameters: LSCINT.P

 Peak Number 6 1,1'-Biphenyl, 2,3-dichloro- Concentration Rank 3

R.T.	EstConc	Area	Relative to ISTD	R.T.
14.59	17.55 ug/L	112523	1,4-Dichlorobenzene-d4	11.48

Hit#	of	Tentative ID	MW	MolForm	CAS#	Qual
1	5	1,1'-Biphenyl, 2,3-dichloro-	222	C12H8Cl2	016605-91-7	98
2		1,1'-Biphenyl, 3,5-dichloro-	222	C12H8Cl2	034883-41-5	98
3		1,1'-Biphenyl, 3,3'-dichloro-	222	C12H8Cl2	002050-67-1	98
4		1,1'-Biphenyl, 3,4-dichloro-	222	C12H8Cl2	002974-92-7	97
5		1,1'-Biphenyl, 2,5-dichloro-	222	C12H8Cl2	034883-39-1	97



Data Path : Z:\VOASRV\HPCHEM1\MSVOA U\DATA\VU102618\
 Data File : VU027827.D
 Acq On : 26 Oct 2018 12:46
 Operator : MD/SY
 Sample : J5668-01
 Misc : 5.0mL/MSVOA U/WATER
 ALS Vial : 11 Sample Multiplier: 1

Instrument :
 MSVOA_U
 ClientSampled :
 ETBP7

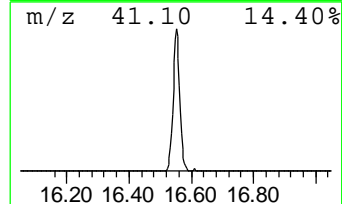
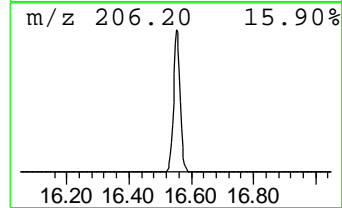
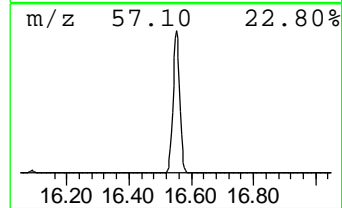
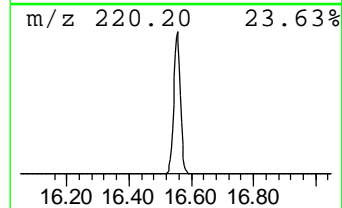
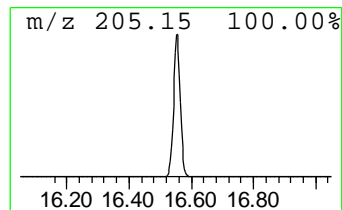
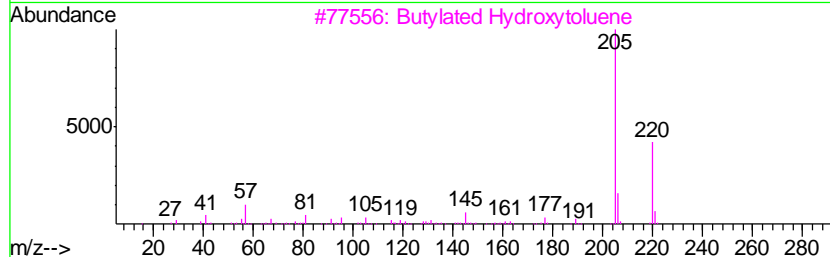
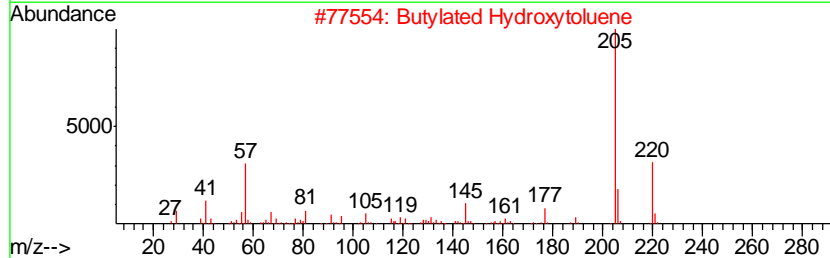
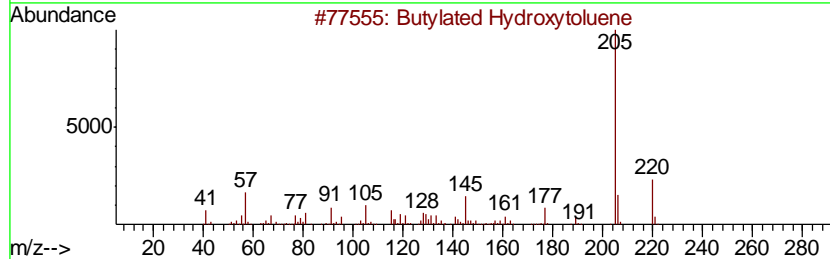
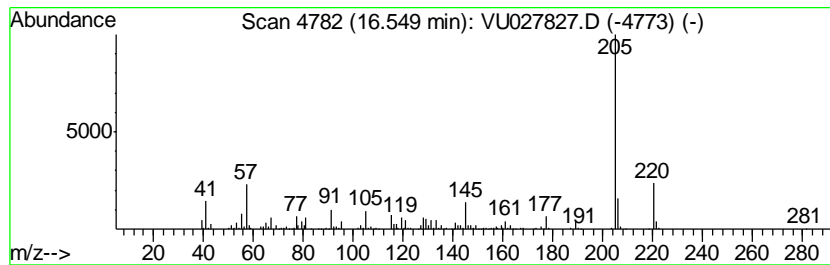
Quant Method : Z:\VOASRV\HPCHEM1\MSVOA_U\METHOD\SOMULM102218WMA.M
 Quant Title : VOC Analysis

TIC Library : C:\DATABASE\NIST11.L
 TIC Integration Parameters: LSCINT.P

 Peak Number 7 Butylated Hydroxytoluene Concentration Rank 2

R.T.	EstConc	Area	Relative to ISTD	R.T.
16.55	44.19 ug/L	283345	1,4-Dichlorobenzene-d4	11.48

Hit#	of	Tentative ID	MW	MolForm	CAS#	Qual
1	5	Butylated Hydroxytoluene	220	C15H24O	000128-37-0	98
2		Butylated Hydroxytoluene	220	C15H24O	000128-37-0	96
3		Butylated Hydroxytoluene	220	C15H24O	000128-37-0	94
4		Butylated Hydroxytoluene	220	C15H24O	000128-37-0	93
5		Phenol, 2,4,6-tris(1-methylethyl)-	220	C15H24O	002934-07-8	83



Data Path : Z:\VOASRV\HPCHEM1\MSVOA U\DATA\VU102618\
 Data File : VU027827.D
 Acq On : 26 Oct 2018 12:46
 Operator : MD/SY
 Sample : J5668-01
 Misc : 5.0mL/MSVOA U/WATER
 ALS Vial : 11 Sample Multiplier: 1

Instrument :
 MSVOA_U
 ClientSampleID :
 ETBP7

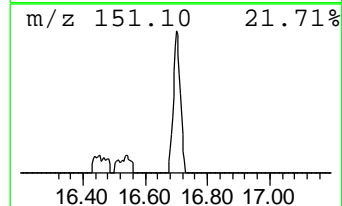
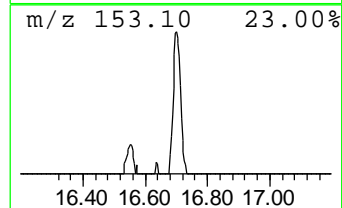
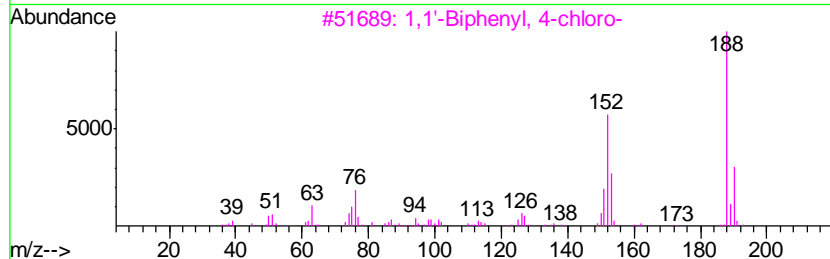
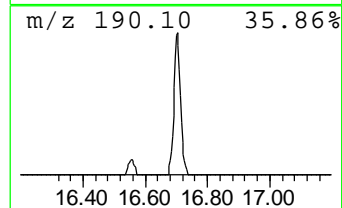
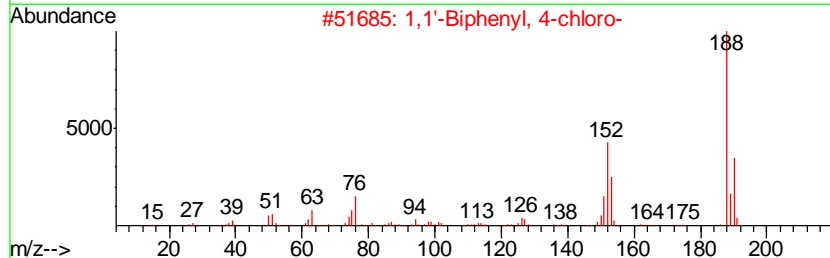
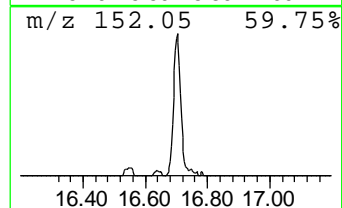
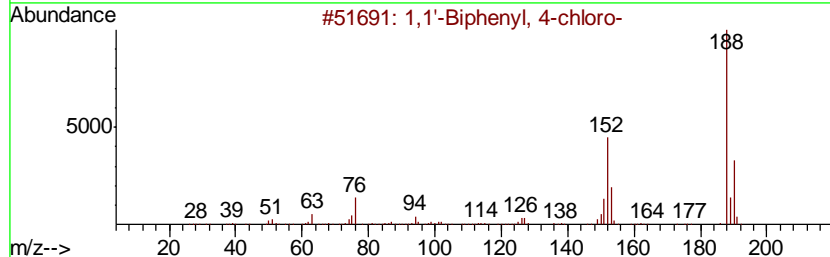
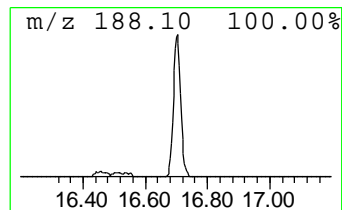
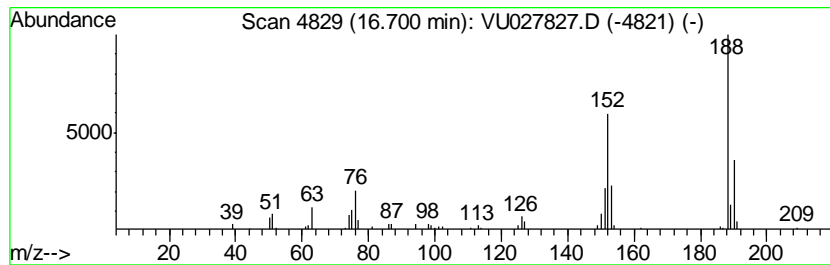
Quant Method : Z:\VOASRV\HPCHEM1\MSVOA_U\METHOD\SOMULM102218WMA.M
 Quant Title : VOC Analysis

TIC Library : C:\DATABASE\NIST11.L
 TIC Integration Parameters: LSCINT.P

 Peak Number 8 1,1'-Biphenyl, 4-chloro- Concentration Rank 7

R.T.	EstConc	Area	Relative to ISTD	R.T.
16.70	7.11 ug/L	45585	1,4-Dichlorobenzene-d4	11.48

Hit#	of	Tentative ID	MW	MolForm	CAS#	Qual
1	5	1,1'-Biphenyl, 4-chloro-	188	C12H9Cl	002051-62-9	94
2		1,1'-Biphenyl, 4-chloro-	188	C12H9Cl	002051-62-9	93
3		1,1'-Biphenyl, 4-chloro-	188	C12H9Cl	002051-62-9	93
4		1,1'-Biphenyl, 2-chloro-	188	C12H9Cl	002051-60-7	93
5		1,1'-Biphenyl, 2-chloro-	188	C12H9Cl	002051-60-7	93



Data Path : Z:\VOASRV\HPCHEM1\MSVOA U\DATA\VU102618\
 Data File : VU027827.D
 Acq On : 26 Oct 2018 12:46
 Operator : MD/SY
 Sample : J5668-01
 Misc : 5.0mL/MSVOA U/WATER
 ALS Vial : 11 Sample Multiplier: 1

Instrument :
 MSVOA_U
 ClientSampled :
 ETBP7

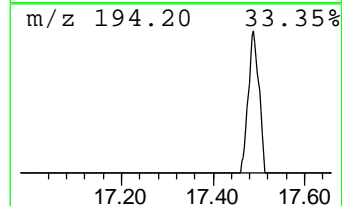
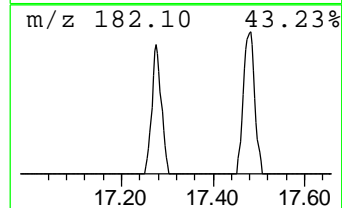
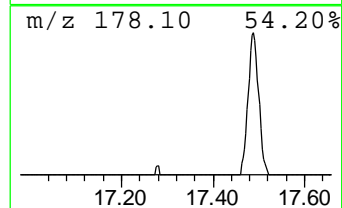
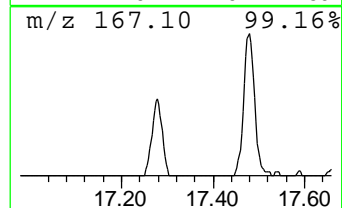
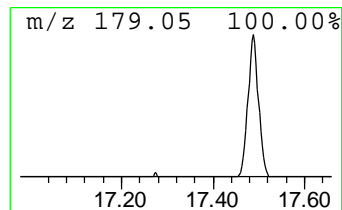
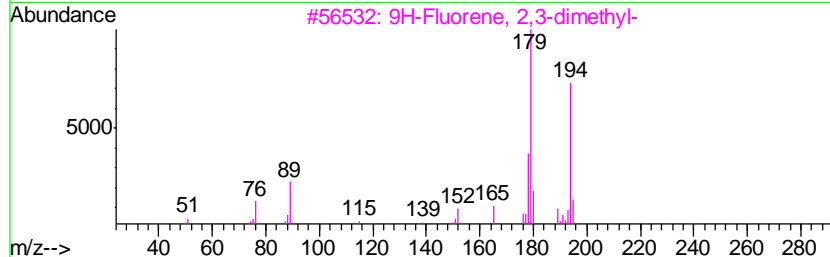
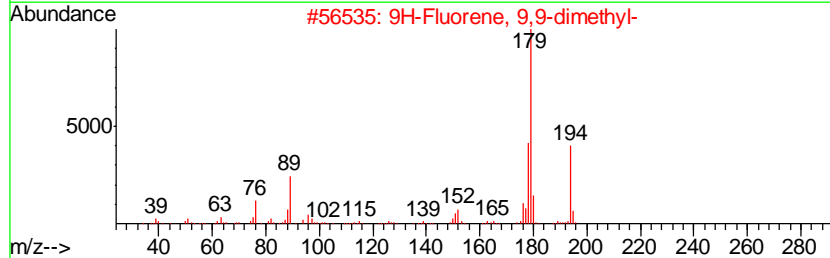
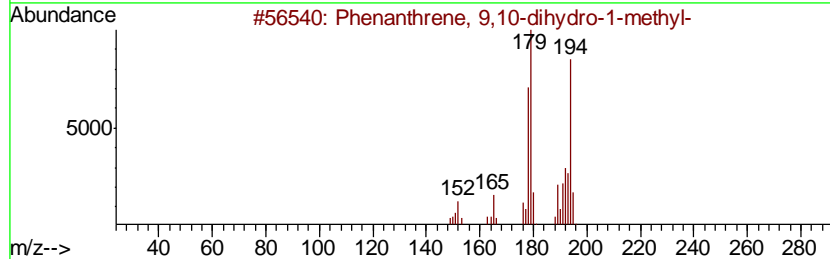
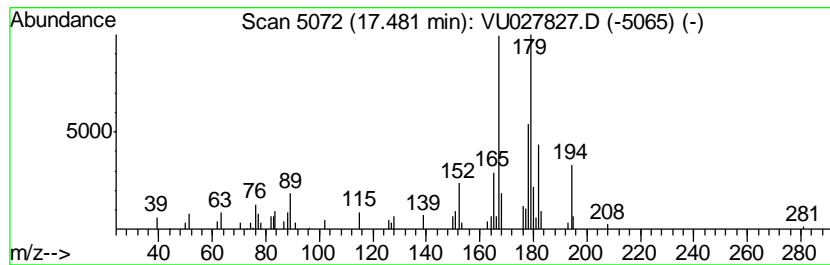
Quant Method : Z:\VOASRV\HPCHEM1\MSVOA_U\METHOD\SOMULM102218WMA.M
 Quant Title : VOC Analysis

TIC Library : C:\DATABASE\NIST11.L
 TIC Integration Parameters: LSCINT.P

 Peak Number 9 Phenanthrene, 9,10-dihydro-... Concentration Rank 8

R.T.	EstConc	Area	Relative to ISTD	R.T.
17.48	6.47 ug/L	41505	1,4-Dichlorobenzene-d4	11.48

Hit#	of	Tentative ID	MW	MolForm	CAS#	Qual
1	5	Phenanthrene, 9,10-dihydro-1-met...	194	C15H14	095676-48-5	64
2		9H-Fluorene, 9,9-dimethyl-	194	C15H14	004569-45-3	50
3		9H-Fluorene, 2,3-dimethyl-	194	C15H14	004612-63-9	49
4		1,1'-Biphenyl, 2-(1-azido-1-meth...	237	C15H15N3	032366-24-8	46
5		4-Ethylbiphenyl	182	C14H14	005707-44-8	43



Data Path : Z:\VOASRV\HPCHEM1\MSVOA_U\DATA\VU102618\
Data File : VU027827.D
Acq On : 26 Oct 2018 12:46
Operator : MD/SY
Sample : J5668-01
Misc : 5.0mL/MSVOA_U/WATER
ALS Vial : 11 Sample Multiplier: 1

Instrument :
MSVOA_U
ClientSampleId :
ETBP7

Quant Method : Z:\VOASRV\HPCHEM1\MSVOA_U\METHOD\SOMULM102218WMA.M
Quant Title : VOC Analysis

TIC Library : C:\DATABASE\NIST11.L
TIC Integration Parameters: LSCINT.P

TIC Top Hit name	RT	EstConc	Units	Response	--Internal Standard--			
					#	RT	Resp	Conc
Sulfur dioxide	1.34	7.9	ug/L	41995	1	5.89	264849	50.0
1,1'-Biphenyl, 4-...	12.29	48.6	ug/L	311854	3	11.48	320588	50.0
1,1'-Biphenyl, 2,...	14.59	17.6	ug/L	112523	3	11.48	320588	50.0
Butylated Hydroxy...	16.55	44.2	ug/L	283345	3	11.48	320588	50.0
1,1'-Biphenyl, 4-...	16.70	7.1	ug/L	45585	3	11.48	320588	50.0
Phenanthrene, 9,1...	17.48	6.5	ug/L	41505	3	11.48	320588	50.0