

Data Path : Z:\VOASRV\HPCHEM1\MSVOA U\DATA\VU102620\
 Data File : VU040947.D
 Acq On : 26 Oct 2020 16:24
 Operator : SY/MD
 Sample : L4492-20
 Misc : 25.0mL/MSVOA U/WATER
 ALS Vial : 16 Sample Multiplier: 1

Instrument :
 MSVOA_U
 ClientSampleId :
 COAP8

Quant Time: Oct 27 03:16:10 2020
 Quant Method : Z:\VOASRV\HPCHEM1\MSVOA_U\METHOD\SOMUTR102620WMA.M
 Quant Title : TRACE VOA SOM01.0
 QLast Update : Tue Oct 27 03:00:07 2020
 Response via : Initial Calibration

Internal Standards	R.T.	QIon	Response	Conc	Units	Dev(Min)
1) 1,4-Difluorobenzene	6.26	114	51507	5.00	ug/L	0.00
28) Chlorobenzene-d5	9.42	117	54274	5.00	ug/L	0.00
60) 1,4-Dichlorobenzene-d4	11.81	152	22003	5.00	ug/L	0.00

System Monitoring Compounds

4) Vinyl Chloride-d3	1.60	65	13468	3.11	ug/L	0.00
Spiked Amount	5.000	Range	40 - 130	Recovery	=	62.20%
7) Chloroethane-d5	1.92	69	13873	4.17	ug/L	0.00
Spiked Amount	5.000	Range	65 - 130	Recovery	=	83.40%
11) 1,1-Dichloroethene-d2	2.58	63	22811	2.69	ug/L	0.00
Spiked Amount	5.000	Range	60 - 125	Recovery	=	53.80%#
20) 2-Butanone-d5	4.67	46	87908	61.69	ug/L	0.00
Spiked Amount	50.000	Range	40 - 130	Recovery	=	123.38%
24) Chloroform-d	5.08	84	35646	4.66	ug/L	0.00
Spiked Amount	5.000	Range	70 - 125	Recovery	=	93.20%
26) 1,2-Dichloroethane-d4	5.72	65	23641	4.98	ug/L	0.00
Spiked Amount	5.000	Range	70 - 130	Recovery	=	99.60%
32) Benzene-d6	5.74	84	61087	4.21	ug/L	0.00
Spiked Amount	5.000	Range	70 - 125	Recovery	=	84.20%
36) 1,2-Dichloropropane-d6	6.70	67	22592	4.78	ug/L	0.00
Spiked Amount	5.000	Range	60 - 140	Recovery	=	95.60%
41) Toluene-d8	7.91	98	45811	3.48	ug/L	0.00
Spiked Amount	5.000	Range	70 - 130	Recovery	=	69.60%#
43) trans-1,3-Dichloropropene-	8.19	79	8234	4.02	ug/L	0.00
Spiked Amount	5.000	Range	55 - 130	Recovery	=	80.40%
46) 2-Hexanone-d5	8.64	63	60660	55.00	ug/L	0.00
Spiked Amount	50.000	Range	45 - 130	Recovery	=	110.00%
57) 1,1,2,2-Tetrachloroethane-	10.75	84	22243	5.07	ug/L	0.00
Spiked Amount	5.000	Range	65 - 120	Recovery	=	101.40%
64) 1,2-Dichlorobenzene-d4	12.19	152	20284	5.25	ug/L	0.00
Spiked Amount	5.000	Range	80 - 120	Recovery	=	105.00%

Target Compounds

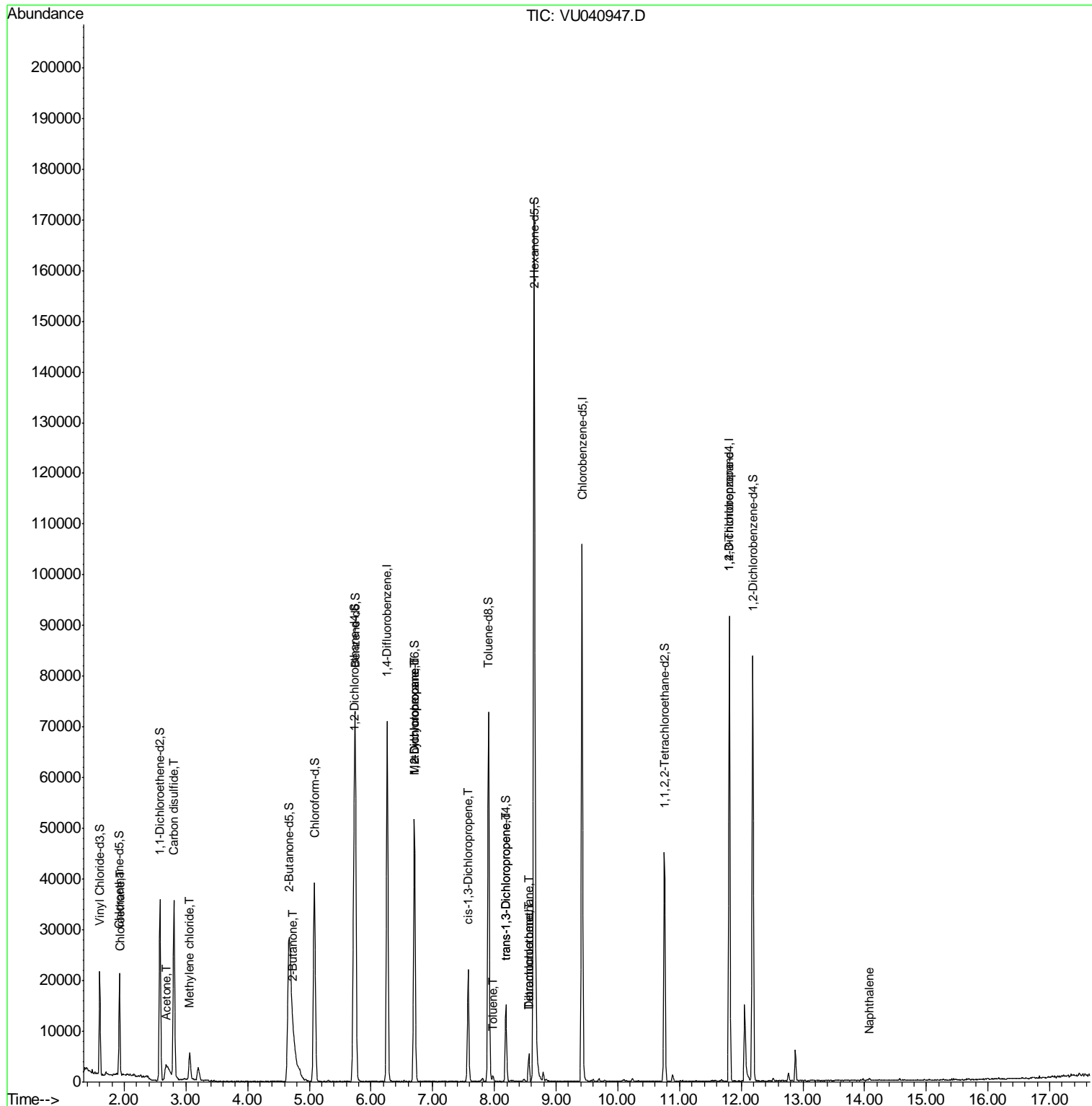
Target Compounds	R.T.	QIon	Response	Conc	Units	Ovalue
8) Chloroethane	1.94	64	110	0.036	ug/L #	43
13) Acetone	2.68	43	4476	4.594	ug/L #	3
14) Carbon disulfide	2.81	76	43625	3.588	ug/L	98
16) Methylene chloride	3.06	84	2385	0.563	ug/L	98
21) 2-Butanone	4.74	43	1207	0.793	ug/L #	52
35) Methylcyclohexane	6.70	83	5093	0.827	ug/L #	13
37) 1,2-Dichloropropane	6.70	63	2691	0.613	ug/L #	86
39) cis-1,3-Dichloropropene	7.58	75	436	0.072	ug/L #	42
42) Toluene	7.98	91	854	0.052	ug/L	89
44) trans-1,3-Dichloropropene	8.19	75	265	0.047	ug/L #	47
47) Tetrachloroethene	8.56	164	1221	0.402	ug/L	84
49) Dibromochloromethane	8.56	129	1411	0.372	ug/L #	11
59) 1,2,3-Trichloropropane	11.81	75	3175	0.971	ug/L	96
69) Naphthalene	14.08	128	423	0.064	ug/L #	69

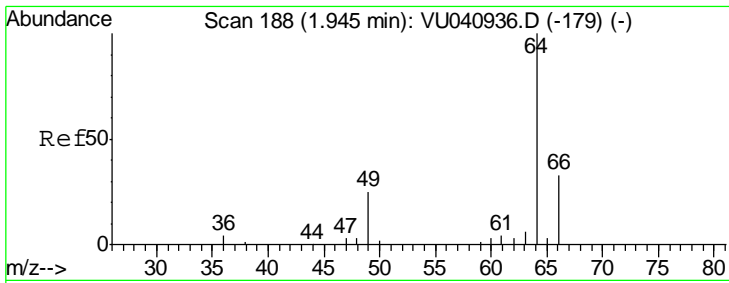
(#) = qualifier out of range (m) = manual integration (+) = signals summed

Data Path : Z:\VOASRV\HPCHEM1\MSVOA U\DATA\VU102620\
 Data File : VU040947.D
 Acq On : 26 Oct 2020 16:24
 Operator : SY/MD
 Sample : L4492-20
 Misc : 25.0mL/MSVOA U/WATER
 ALS Vial : 16 Sample Multiplier: 1

Instrument :
 MSVOA_U
 ClientSampled :
 C0AP8

Quant Time: Oct 27 03:16:10 2020
 Quant Method : Z:\VOASRV\HPCHEM1\MSVOA_U\METHOD\SOMUTR102620WMA.M
 Quant Title : TRACE VOA SOM01.0
 QLast Update : Tue Oct 27 03:00:07 2020
 Response via : Initial Calibration

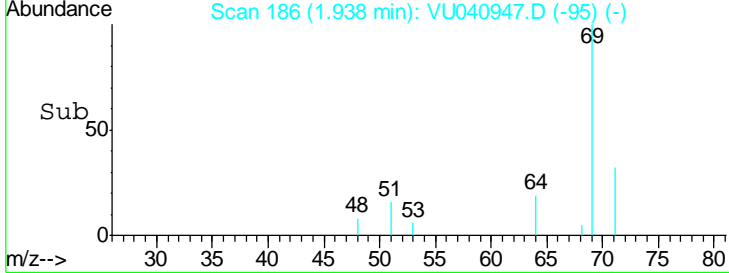
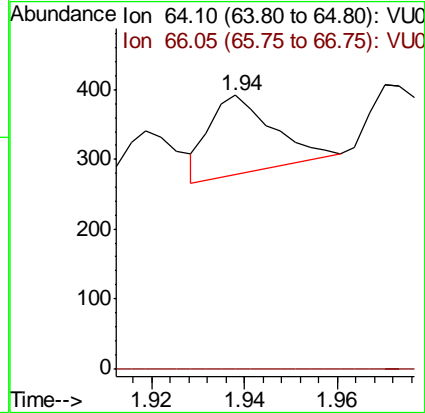
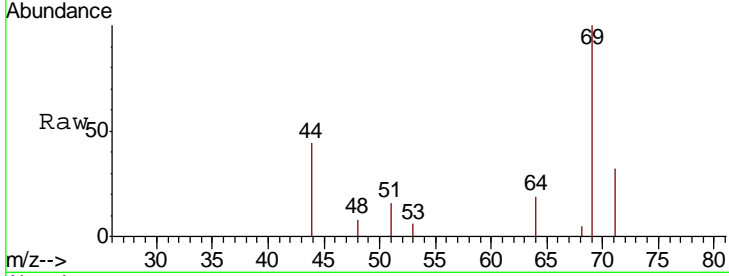




#8
 Chloroethane
 Concen: 0.036 ug/L
 RT: 1.94 min Scan# 186
 Delta R.T. -0.01 min
 Lab File: VU040947.D
 Acq: 26 Oct 2020 16:24

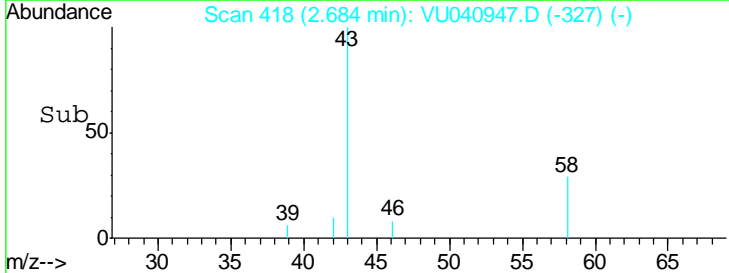
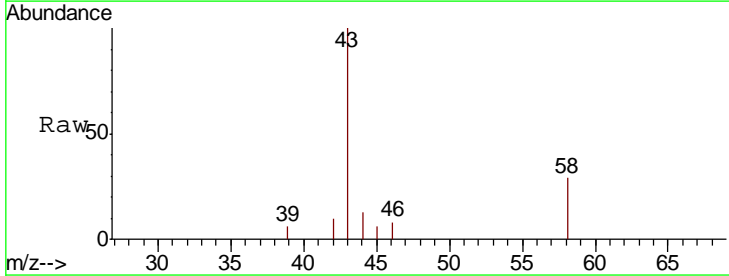
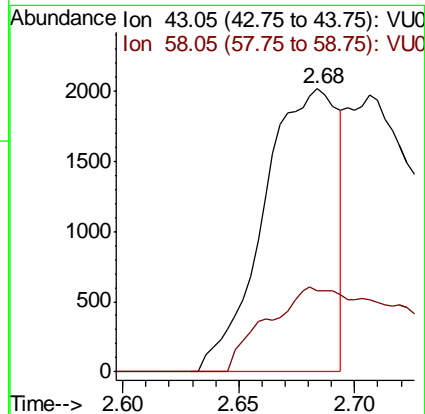
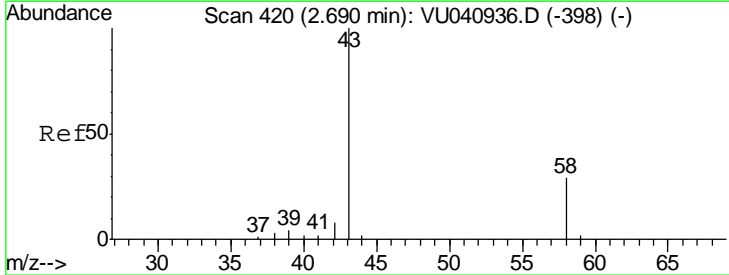
Instrument : MSVOA_U
 ClientSampled : VU040947.D
 COAP8

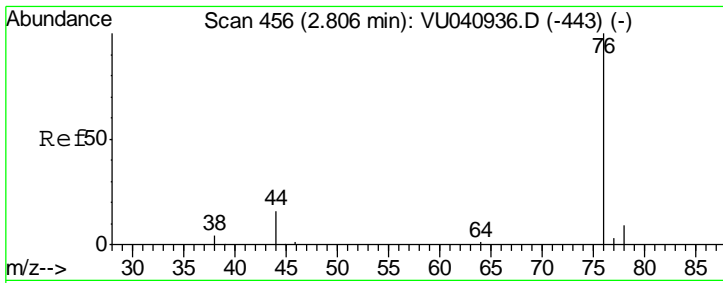
Tgt Ion	Resp	Lower	Upper
64	110		
66	0.0	22.3	41.5#



#13
 Acetone
 Concen: 4.594 ug/L
 RT: 2.68 min Scan# 418
 Delta R.T. -0.01 min
 Lab File: VU040947.D
 Acq: 26 Oct 2020 16:24

Tgt Ion	Resp	Lower	Upper
43	4476		
58	51.0	0.0	25.4#

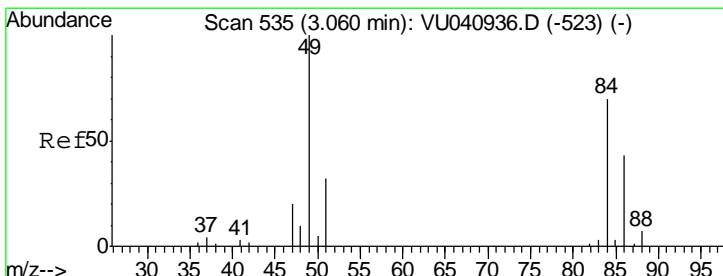
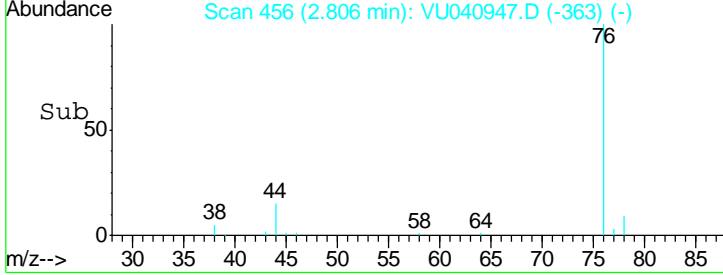
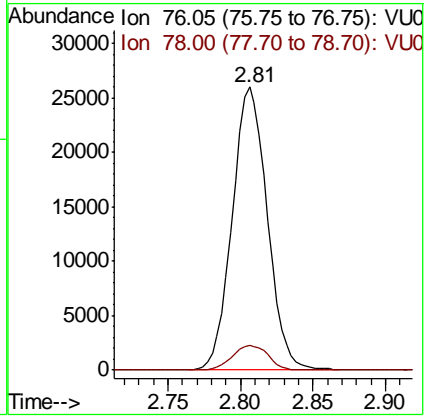
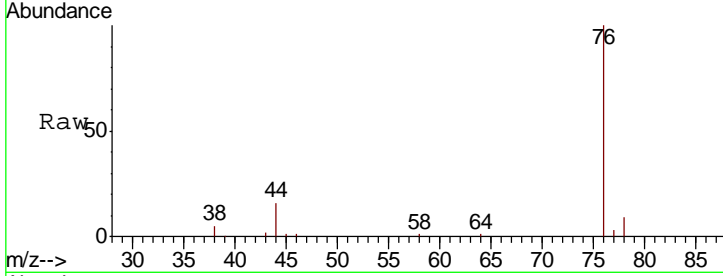




#14
 Carbon disulfide
 Concen: 3.588 ug/L
 RT: 2.81 min Scan# 456
 Delta R.T. -0.00 min
 Lab File: VU040947.D
 Acq: 26 Oct 2020 16:24

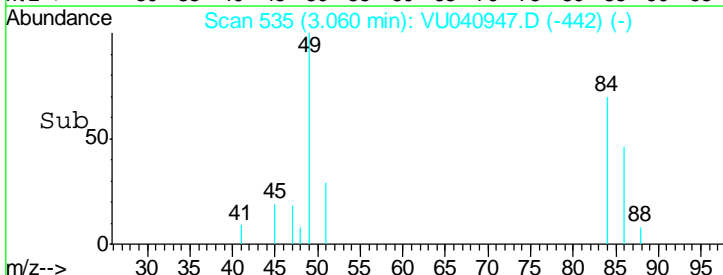
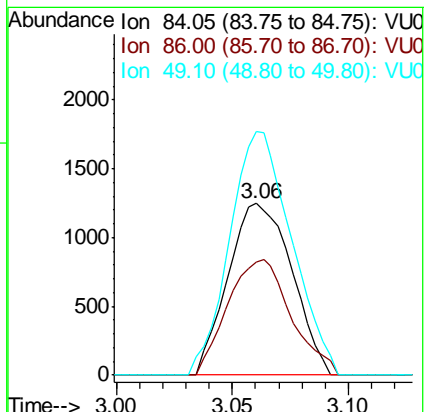
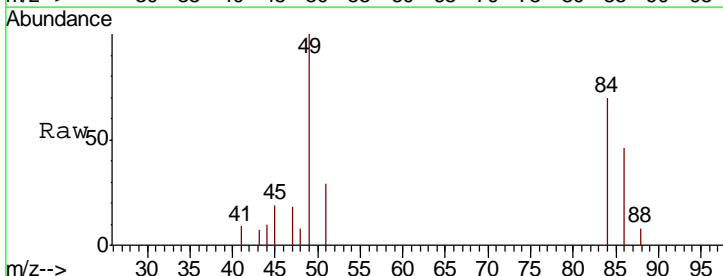
Instrument : MSVOA_U
 ClientSampled : VU040947.D
 C0AP8

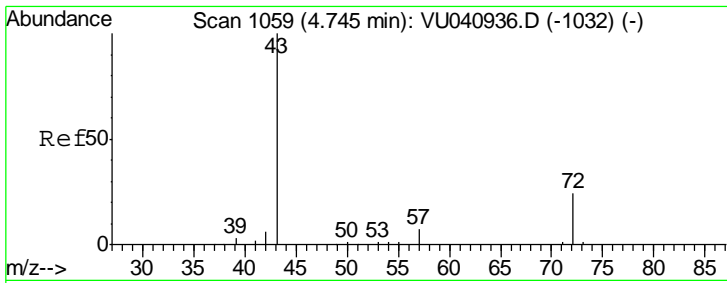
Tgt Ion	Resp	Lower	Upper
76	43625		
78	8.8	7.5	11.3



#16
 Methylene chloride
 Concen: 0.563 ug/L
 RT: 3.06 min Scan# 535
 Delta R.T. -0.00 min
 Lab File: VU040947.D
 Acq: 26 Oct 2020 16:24

Tgt Ion	Resp	Lower	Upper
84	2385		
86	65.7	42.8	79.6
49	142.1	99.5	184.7

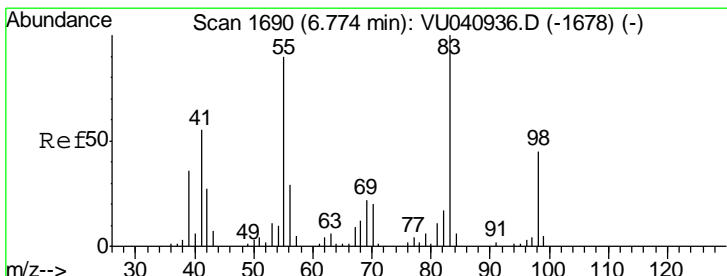
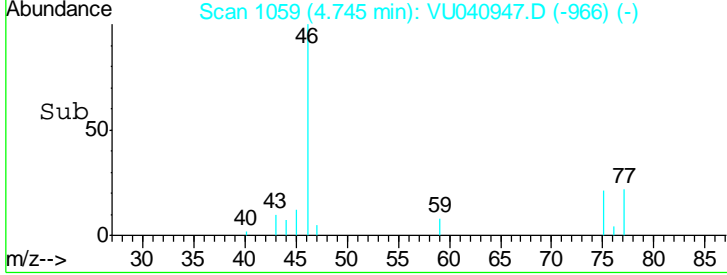
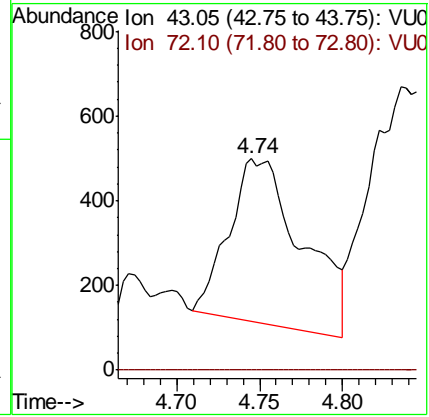
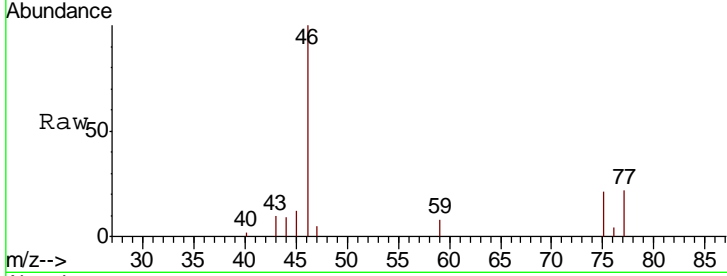




#21
 2-Butanone
 Concen: 0.793 ug/L
 RT: 4.74 min Scan# 1059
 Delta R.T. -0.00 min
 Lab File: VU040947.D
 Acq: 26 Oct 2020 16:24

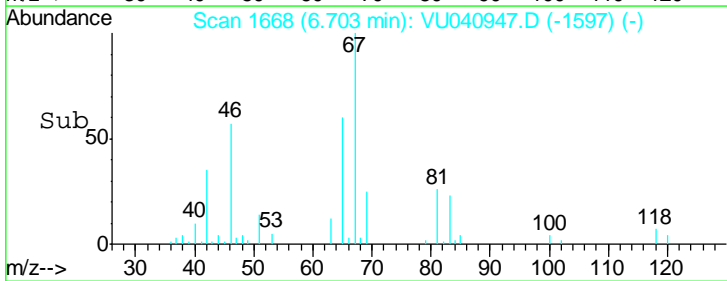
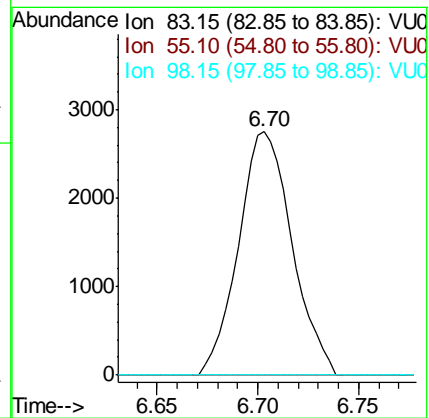
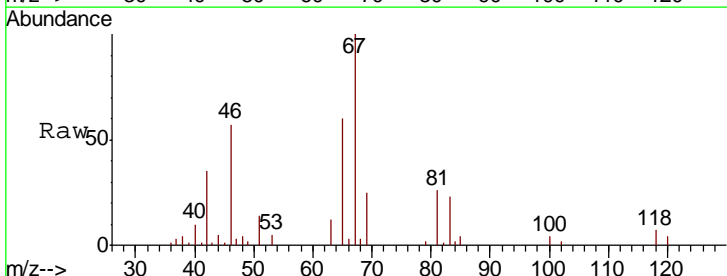
Instrument : MSVOA_U
 ClientSampled : COAP8

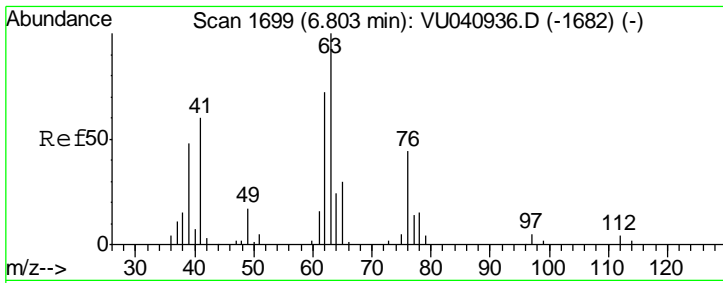
Tgt Ion	Resp	Lower	Upper
43	1207		
72	0.0	11.8	35.4#



#35
 Methylcyclohexane
 Concen: 0.827 ug/L
 RT: 6.70 min Scan# 1668
 Delta R.T. -0.07 min
 Lab File: VU040947.D
 Acq: 26 Oct 2020 16:24

Tgt Ion	Resp	Lower	Upper
83	5093		
55	0.0	72.0	108.0#
98	0.0	36.6	55.0#

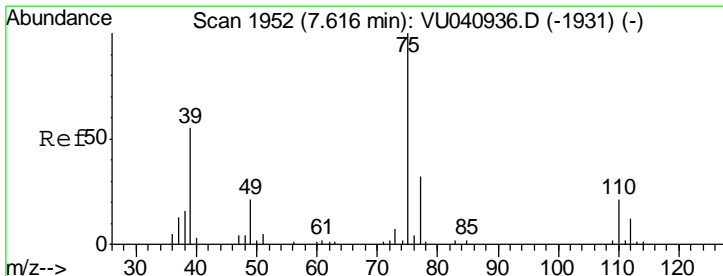
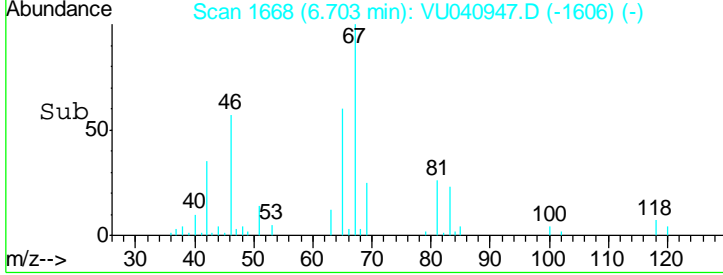
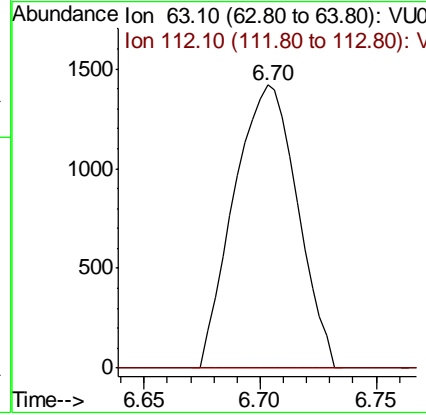
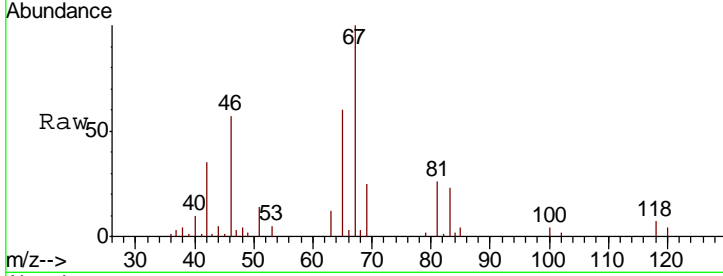




#37
 1,2-Dichloropropane
 Concen: 0.613 ug/L
 RT: 6.70 min Scan# 1668
 Delta R.T. -0.10 min
 Lab File: VU040947.D
 Acq: 26 Oct 2020 16:24

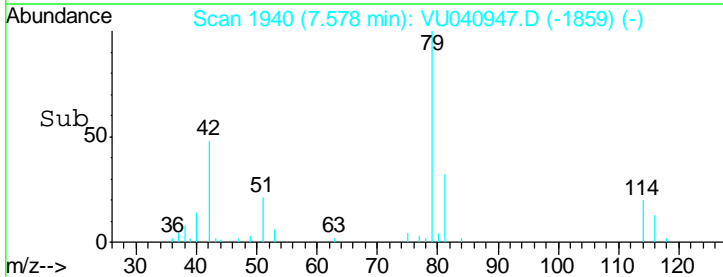
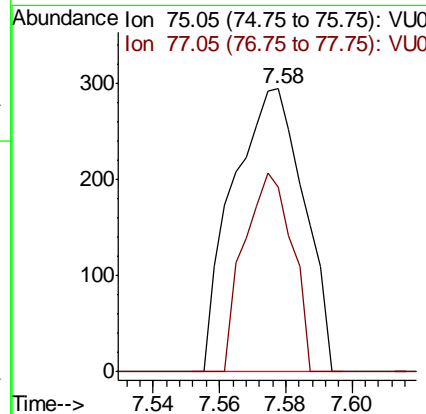
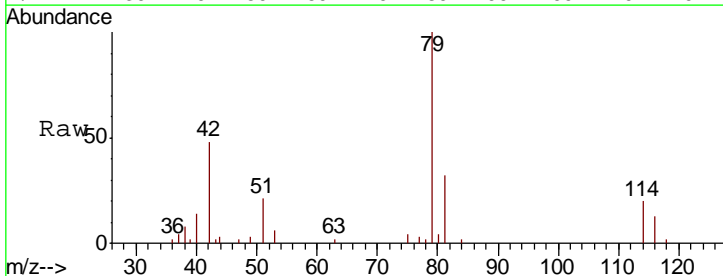
Instrument : MSVOA_U
 ClientSampled : C0AP8

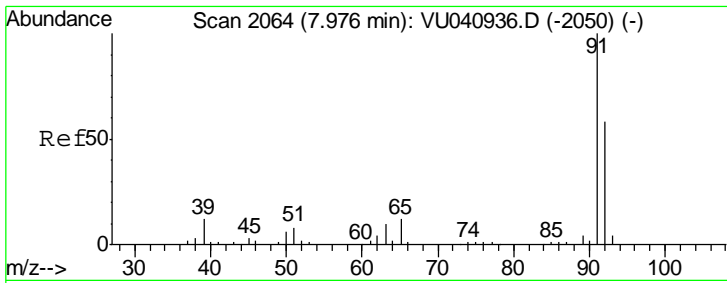
Tgt Ion	Resp	Lower	Upper
63	100		
112	0.0	3.6	5.4#



#39
 cis-1,3-Dichloropropene
 Concen: 0.072 ug/L
 RT: 7.58 min Scan# 1940
 Delta R.T. -0.04 min
 Lab File: VU040947.D
 Acq: 26 Oct 2020 16:24

Tgt Ion	Resp	Lower	Upper
75	100		
77	65.3	22.7	42.3#

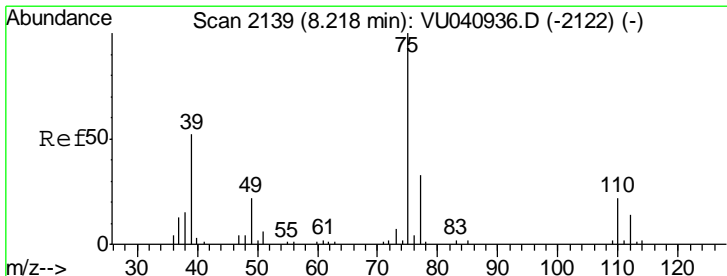
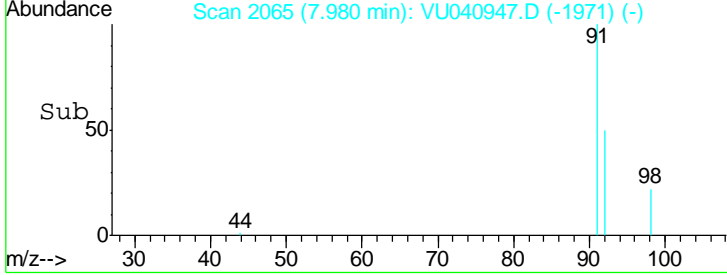
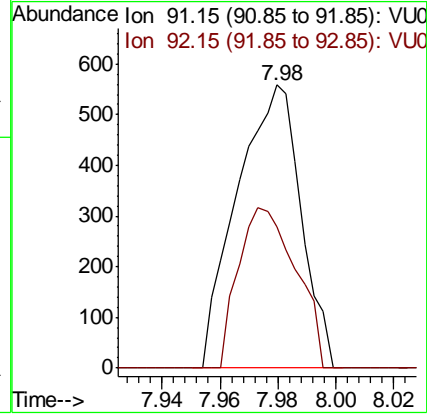
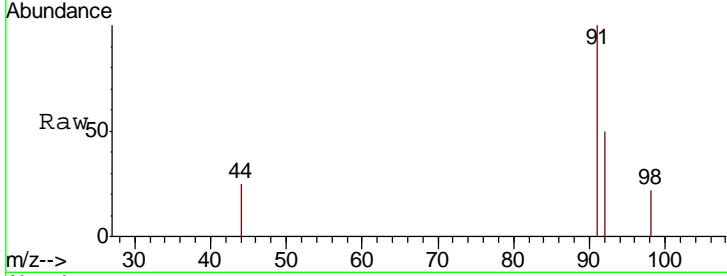




#42
 Toluene
 Concen: 0.052 ug/L
 RT: 7.98 min Scan# 2065
 Delta R.T. 0.00 min
 Lab File: VU040947.D
 Acq: 26 Oct 2020 16:24

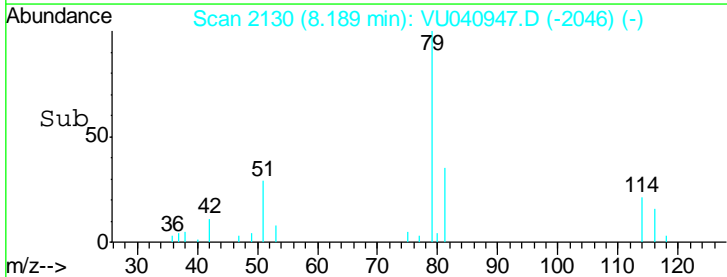
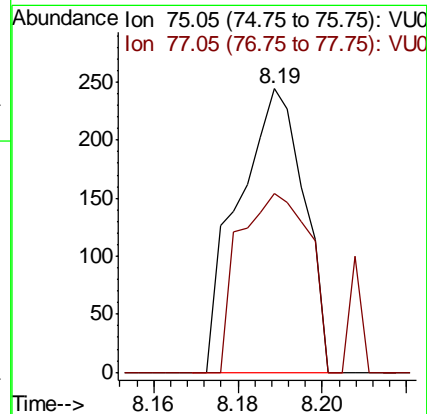
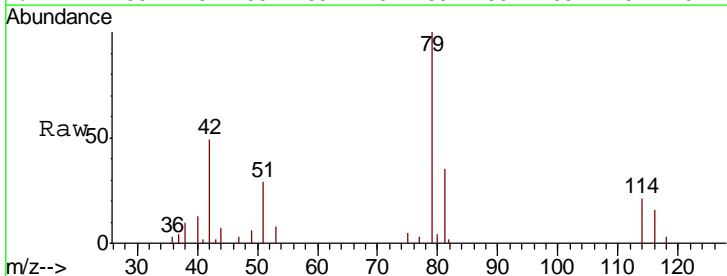
Instrument : MSVOA_U
 ClientSampled : C0AP8

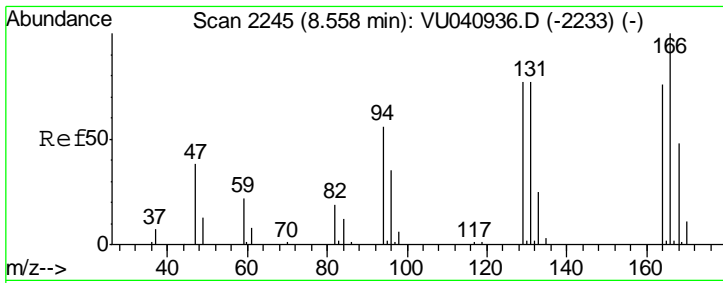
Tgt Ion	Resp	Lower	Upper
91	100		
92	49.8	40.6	75.4



#44
 trans-1,3-Dichloropropene
 Concen: 0.047 ug/L
 RT: 8.19 min Scan# 2130
 Delta R.T. -0.03 min
 Lab File: VU040947.D
 Acq: 26 Oct 2020 16:24

Tgt Ion	Resp	Lower	Upper
75	100		
77	63.1	23.3	43.3#

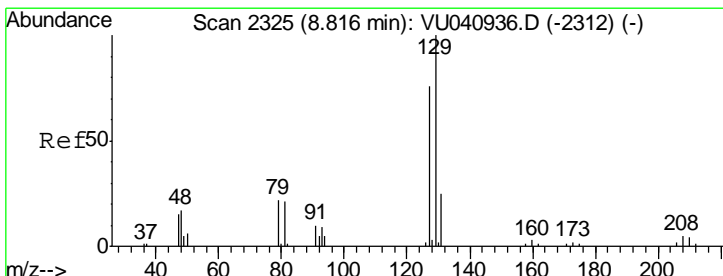
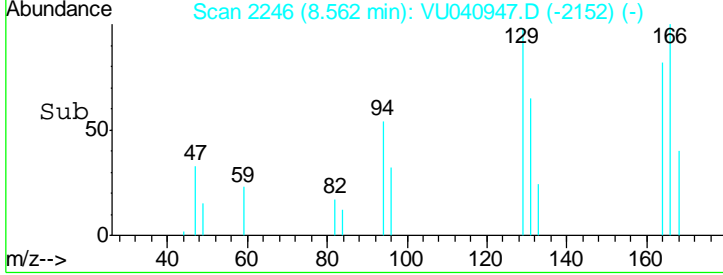
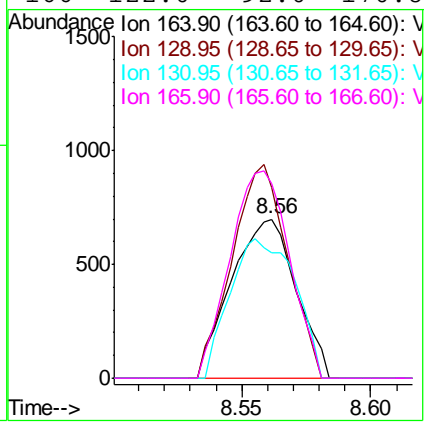
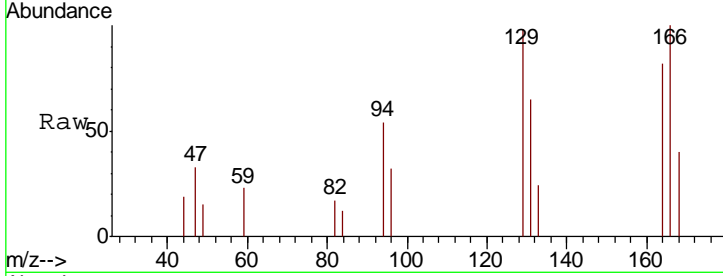




#47
 Tetrachloroethene
 Concen: 0.402 ug/L
 RT: 8.56 min Scan# 2246
 Delta R.T. 0.00 min
 Lab File: VU040947.D
 Acq: 26 Oct 2020 16:24

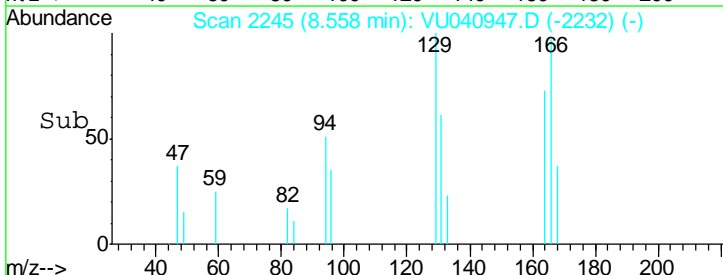
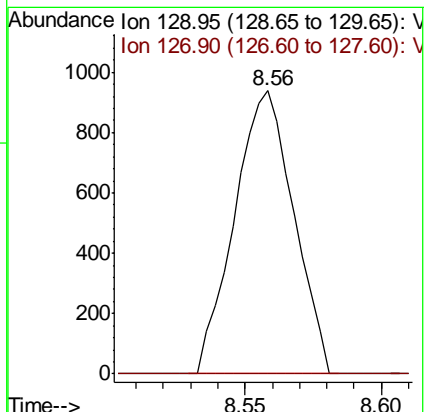
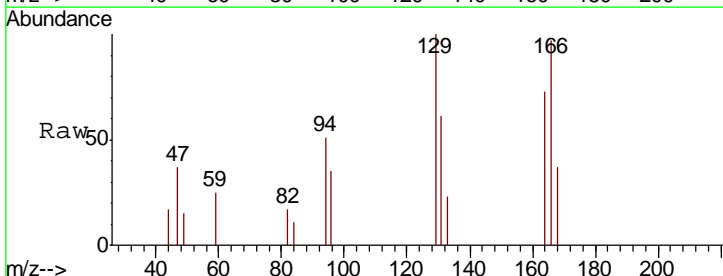
Instrument : MSVOA_U
 ClientSampled : VU040947.D
 COAP8

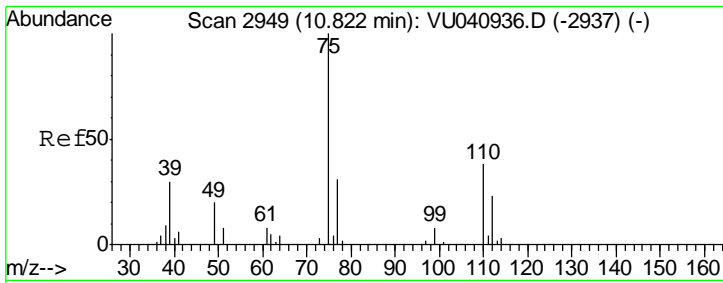
Tgt Ion	Resp	Lower	Upper
164	100		
129	120.0	70.3	130.7
131	78.8	70.8	131.4
166	122.0	92.0	170.8



#49
 Dibromochloromethane
 Concen: 0.372 ug/L
 RT: 8.56 min Scan# 2245
 Delta R.T. -0.26 min
 Lab File: VU040947.D
 Acq: 26 Oct 2020 16:24

Tgt Ion	Resp	Lower	Upper
129	100		
127	0.0	53.4	99.2#

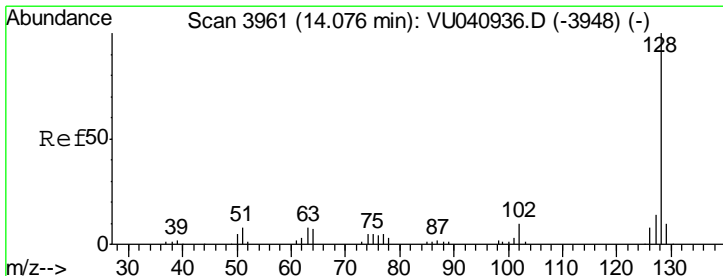
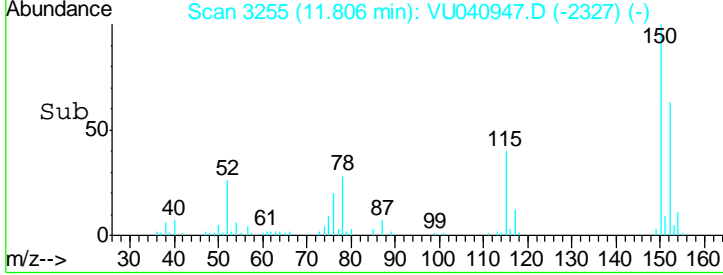
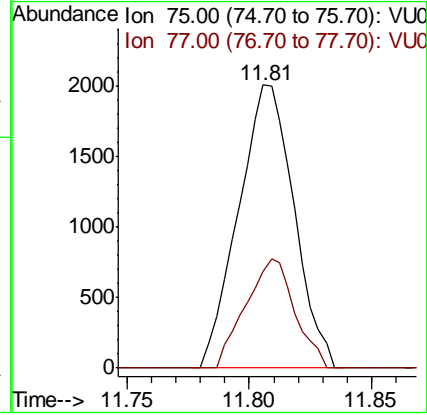
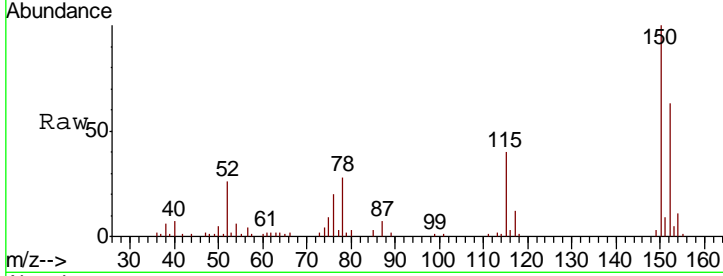




#59
 1,2,3-Trichloropropane
 Concen: 0.971 ug/L
 RT: 11.81 min Scan# 3255
 Delta R.T. 0.98 min
 Lab File: VU040947.D
 Acq: 26 Oct 2020 16:24

Instrument : MSVOA_U
 ClientSampled : C0AP8

Tgt Ion	Resp	Lower	Upper
75	3175		
77	34.1	25.7	38.5



#69
 Naphthalene
 Concen: 0.064 ug/L
 RT: 14.08 min Scan# 3961
 Delta R.T. -0.00 min
 Lab File: VU040947.D
 Acq: 26 Oct 2020 16:24

Tgt Ion	Resp	Lower	Upper
128	423		
129	0.0	8.7	13.1#
127	0.0	10.8	16.2#

