

Data Path : Z:\VOASRV\HPCHEM1\MSVOA U\DATA\VU102620\  
 Data File : VU040956.D  
 Acq On : 26 Oct 2020 19:53  
 Operator : SY/MD  
 Sample : L4492-14  
 Misc : 25.0mL/MSVOA U/WATER  
 ALS Vial : 25 Sample Multiplier: 1

Instrument :  
 MSVOA\_U  
 ClientSampled :  
 C0AP2

Integration Parameters: rteint.p  
 Integrator: RTE  
 Smoothing : ON Filtering: 5  
 Sampling : 1 Min Area: 3 % of largest Peak  
 Start Thrs: 0.1 Max Peaks: 100  
 Stop Thrs : 0 Peak Location: TOP

If leading or trailing edge < 100 prefer < Baseline drop else tangent >  
 Peak separation: 5

Method : Z:\VOASRV\HPCHEM1\MSVOA\_U\METHOD\SOMUTR102620WMA.M  
 Title : TRACE VOA SOM01.0

Signal : TIC

peak #	R.T. min	first scan	max scan	last scan	PK TY	peak height	corr. area	corr. % max.	% of total
1	1.366	3	8	19	rVB	94079	91174	8.39%	2.693%
2	1.604	54	82	91	rBV3	93840	279609	25.74%	8.259%
3	1.922	177	181	194	rVB	25137	33366	3.07%	0.986%
4	2.166	251	257	265	rVB3	12906	17059	1.57%	0.504%
5	2.581	372	386	396	rBV2	36380	59636	5.49%	1.762%
6	3.874	775	788	804	rBV2	10892	26344	2.43%	0.778%
7	4.668	1018	1035	1082	rBV3	34242	152841	14.07%	4.515%
8	5.083	1145	1164	1185	rBV	41202	89997	8.29%	2.658%
9	5.742	1349	1369	1394	rBV2	74014	198773	18.30%	5.872%
10	6.263	1517	1531	1548	rVB	70620	129875	11.96%	3.836%
11	6.703	1655	1668	1684	rVB2	51620	98488	9.07%	2.909%
12	7.574	1928	1939	1953	rVB	22446	37787	3.48%	1.116%
13	7.906	2030	2042	2055	rBV	74930	126811	11.68%	3.746%
14	8.185	2120	2129	2140	rBV2	14932	23438	2.16%	0.692%
15	8.558	2231	2245	2259	rBV	651176	1086153	100.00%	32.084%
16	8.642	2259	2271	2296	rVB	180572	337491	31.07%	9.969%
17	9.420	2501	2513	2527	rBV	105325	172309	15.86%	5.090%
18	10.754	2917	2928	2941	rVB	44913	70625	6.50%	2.086%
19	11.806	3242	3255	3268	rBV	95596	148170	13.64%	4.377%
20	12.057	3324	3333	3351	rBV3	6009	10982	1.01%	0.324%
21	12.188	3362	3374	3387	rBV	86682	135306	12.46%	3.997%
22	15.208	4303	4313	4326	rBV	22427	33476	3.08%	0.989%
23	15.397	4361	4372	4386	rBV	16700	25676	2.36%	0.758%

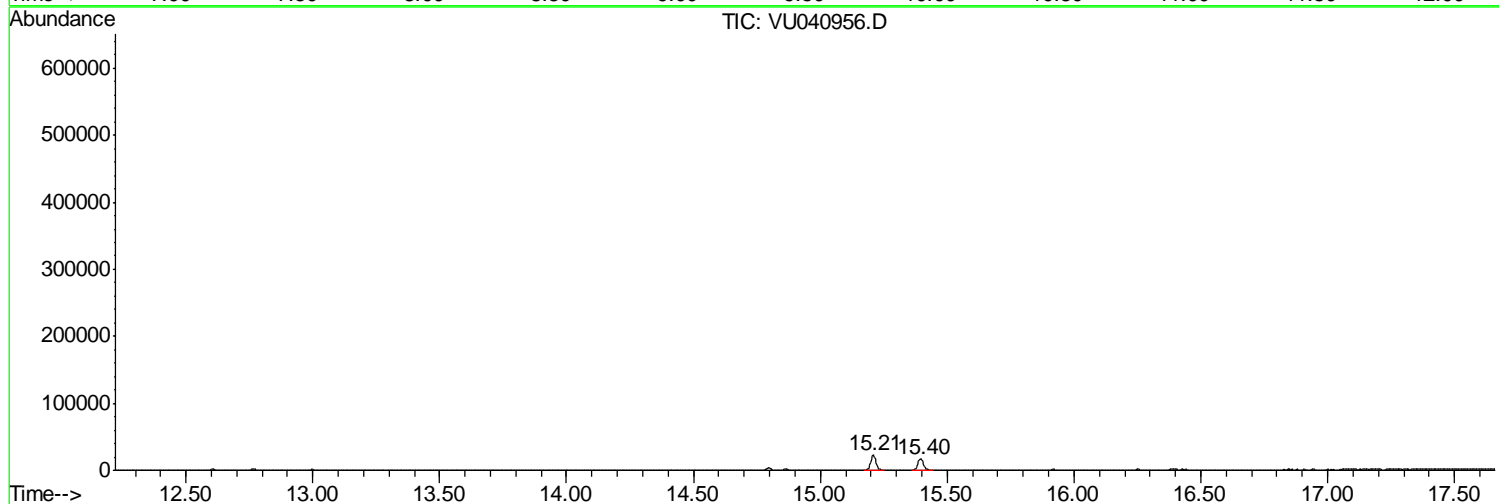
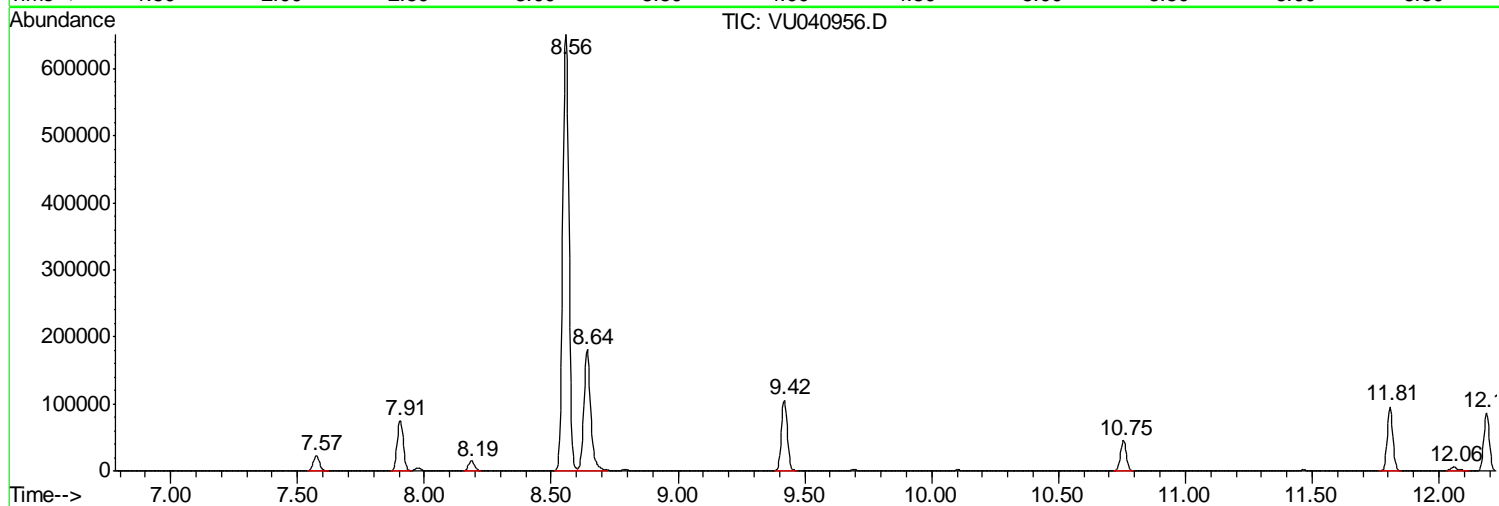
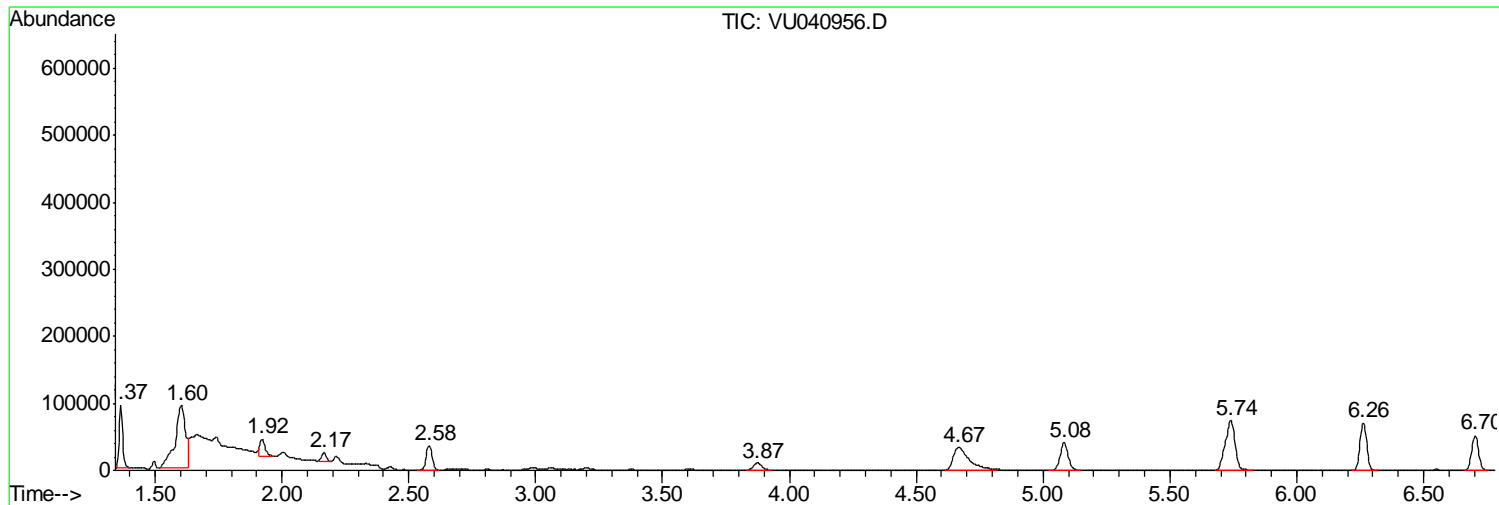
Sum of corrected areas: 3385386

Data Path : Z:\VOASRV\HPCHEM1\MSVOA U\DATA\VU102620\  
Data File : VU040956.D  
Acq On : 26 Oct 2020 19:53  
Operator : SY/MD  
Sample : L4492-14  
Misc : 25.0mL/MSVOA U/WATER  
ALS Vial : 25 Sample Multiplier: 1

Instrument :  
MSVOA\_U  
ClientSampleId :  
C0AP2

Quant Method : Z:\VOASRV\HPCHEM1\MSVOA\_U\METHOD\SOMUTR102620WMA.M  
Quant Title : TRACE VOA SOM01.0

TIC Library : C:\DATABASE\NIST11.L  
TIC Integration Parameters: LSCINT.P



Data Path : Z:\VOASRV\HPCHEM1\MSVOA U\DATA\VU102620\  
 Data File : VU040956.D  
 Acq On : 26 Oct 2020 19:53  
 Operator : SY/MD  
 Sample : L4492-14  
 Misc : 25.0mL/MSVOA U/WATER  
 ALS Vial : 25 Sample Multiplier: 1

Instrument :  
 MSVOA\_U  
 ClientSampleID :  
 C0AP2

Quant Method : Z:\VOASRV\HPCHEM1\MSVOA\_U\METHOD\SOMUTR102620WMA.M  
 Quant Title : TRACE VOA SOM01.0

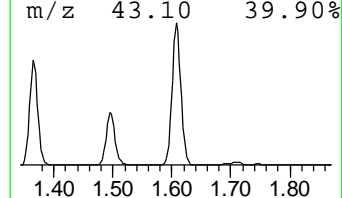
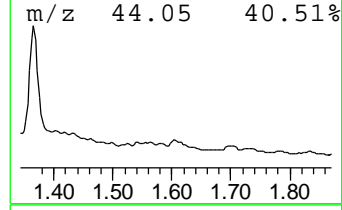
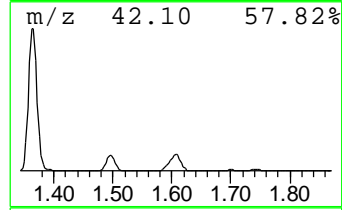
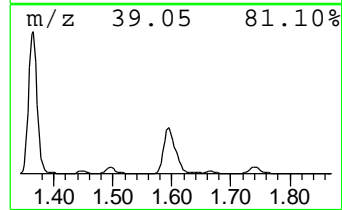
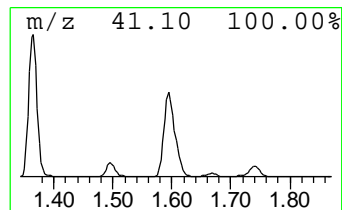
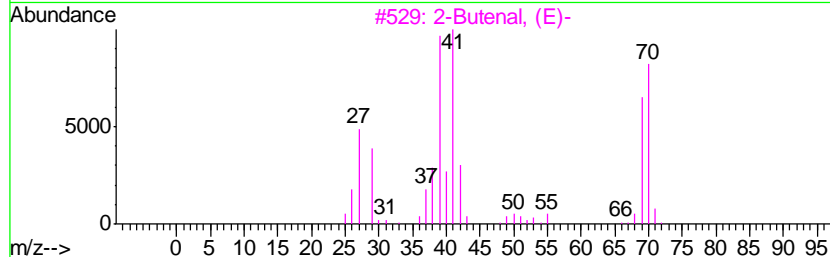
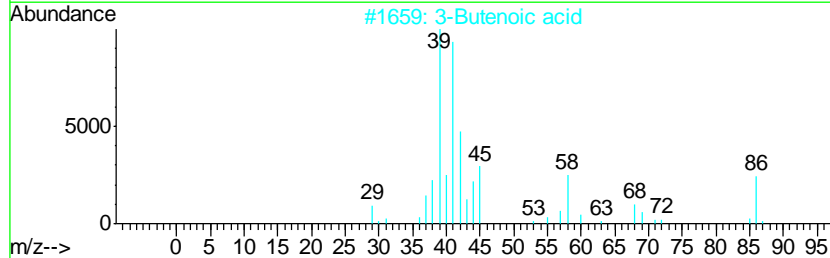
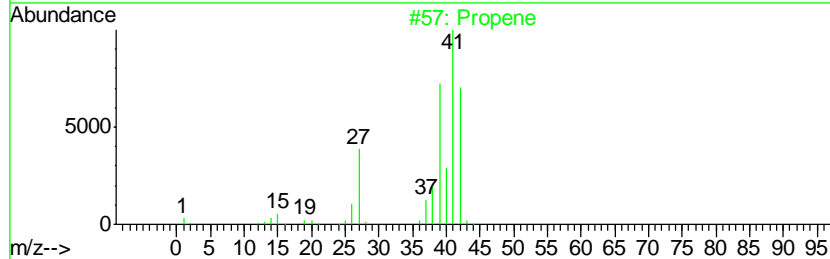
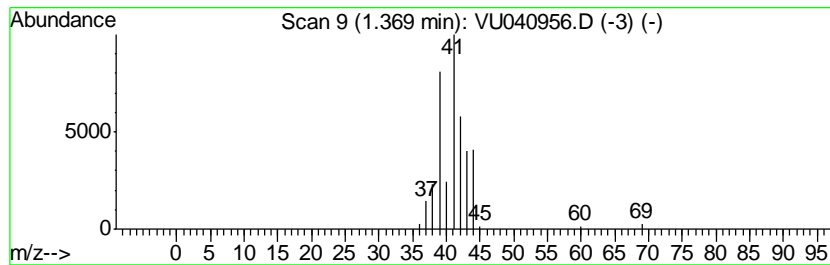
TIC Library : C:\DATABASE\NIST11.L  
 TIC Integration Parameters: LSCINT.P

\*\*\*\*\*  
 Peak Number 1 (DEL) Alkane: Straight-Chai... Concentration Rank 1

R.T.	EstConc	Area	Relative to ISTD	R.T.
1.37	3.51 ug/L	91174	1,4-Difluorobenzene	6.26

Hit#	of	Tentative ID	MW	MolForm	CAS#	Qual
1	5	Propene	42	C3H6	000115-07-1	90
2		3-Butenoic acid	86	C4H6O2	000625-38-7	83
3		2-Butenal, (E)-	70	C4H6O	000123-73-9	78
4		Furan, 2,5-dihydro-	70	C4H6O	001708-29-8	74
5		Cyclopropanecarboxylic acid	86	C4H6O2	001759-53-1	64



Data Path : Z:\VOASRV\HPCHEM1\MSVOA U\DATA\VU102620\  
 Data File : VU040956.D  
 Acq On : 26 Oct 2020 19:53  
 Operator : SY/MD  
 Sample : L4492-14  
 Misc : 25.0mL/MSVOA U/WATER  
 ALS Vial : 25 Sample Multiplier: 1

Instrument :  
 MSVOA\_U  
 ClientSampled :  
 C0AP2

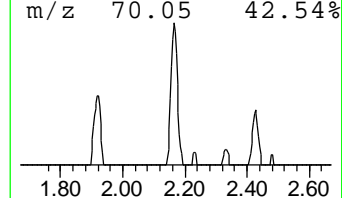
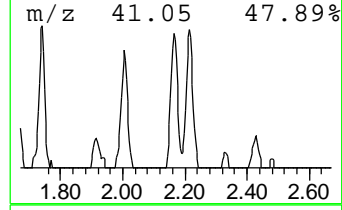
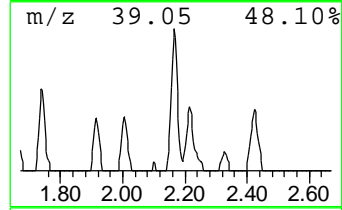
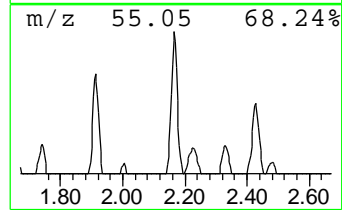
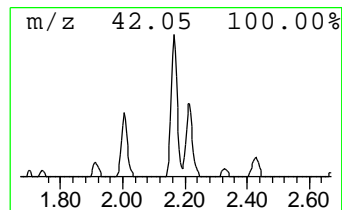
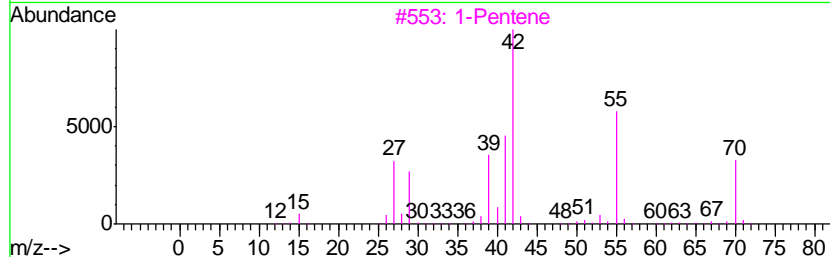
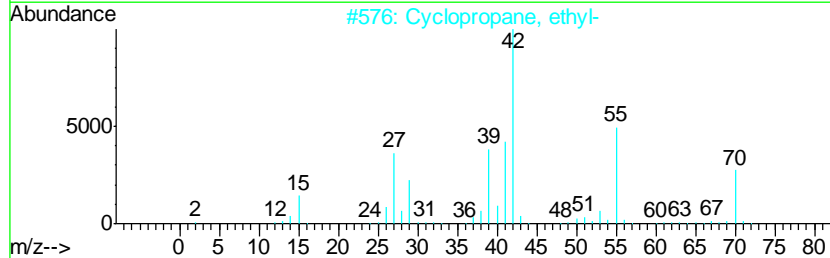
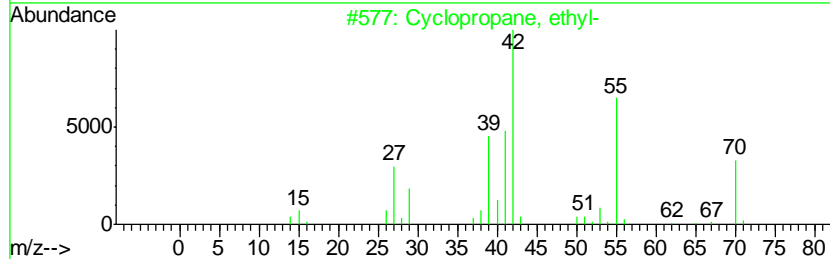
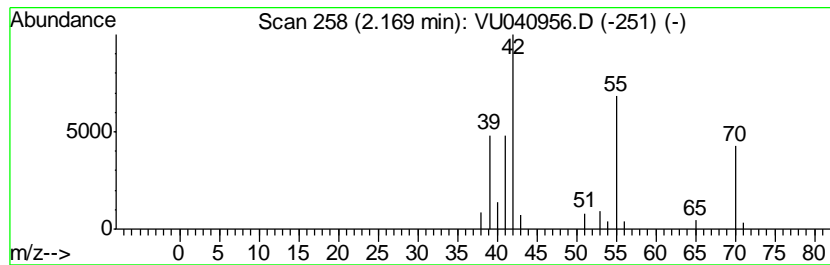
Quant Method : Z:\VOASRV\HPCHEM1\MSVOA\_U\METHOD\SOMUTR102620WMA.M  
 Quant Title : TRACE VOA SOM01.0

TIC Library : C:\DATABASE\NIST11.L  
 TIC Integration Parameters: LSCINT.P

\*\*\*\*\*  
 Peak Number 2 (DEL) Alkane: Cyclic2.17 Concentration Rank 6

R.T.	EstConc	Area	Relative to ISTD	R.T.
2.17	0.66 ug/L	17059	1,4-Difluorobenzene	6.26

Hit#	of	Tentative ID	MW	MolForm	CAS#	Qual
1	5	Cyclopropane, ethyl-	70	C5H10	001191-96-4	91
2		Cyclopropane, ethyl-	70	C5H10	001191-96-4	86
3		1-Pentene	70	C5H10	000109-67-1	64
4		Cyclopropane, ethyl-	70	C5H10	001191-96-4	64
5		1-Pentene	70	C5H10	000109-67-1	64



Data Path : Z:\VOASRV\HPCHEM1\MSVOA U\DATA\VU102620\  
 Data File : VU040956.D  
 Acq On : 26 Oct 2020 19:53  
 Operator : SY/MD  
 Sample : L4492-14  
 Misc : 25.0mL/MSVOA U/WATER  
 ALS Vial : 25 Sample Multiplier: 1

Instrument :  
 MSVOA\_U  
 ClientSampleID :  
 C0AP2

Quant Method : Z:\VOASRV\HPCHEM1\MSVOA\_U\METHOD\SOMUTR102620WMA.M  
 Quant Title : TRACE VOA SOM01.0

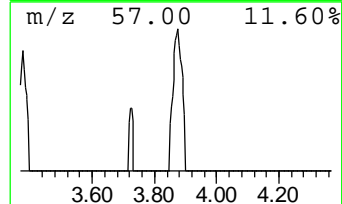
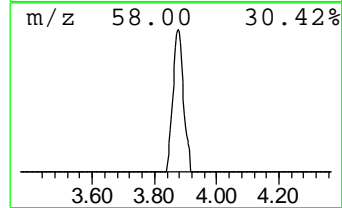
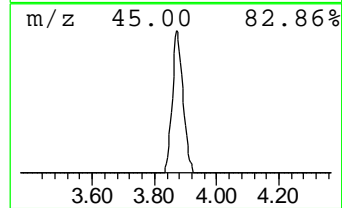
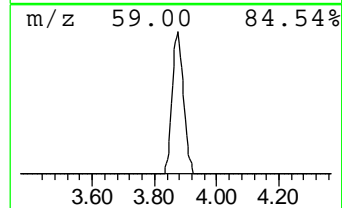
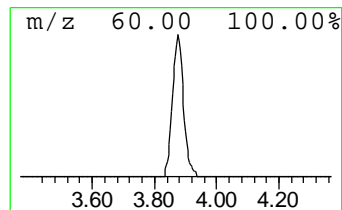
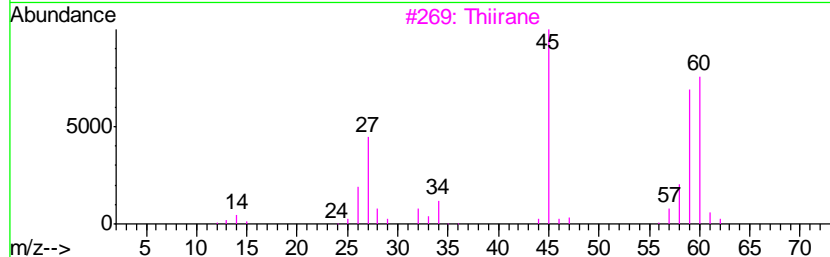
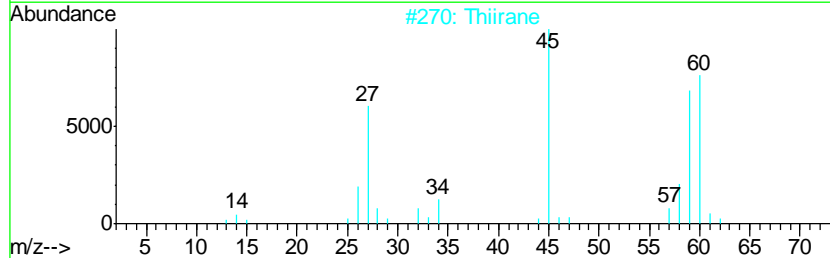
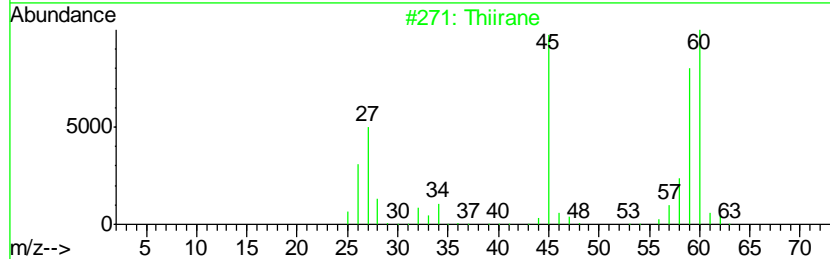
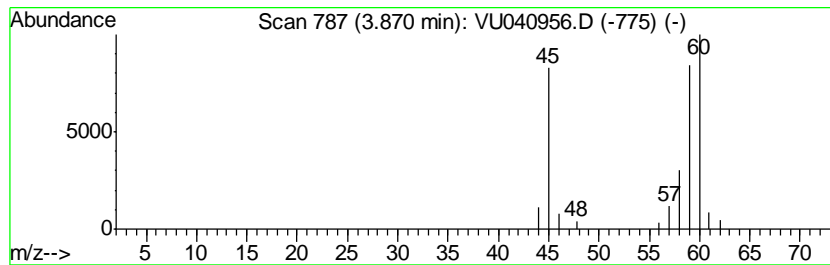
TIC Library : C:\DATABASE\NIST11.L  
 TIC Integration Parameters: LSCINT.P

\*\*\*\*\*  
 Peak Number 3 Thiirane Concentration Rank 4

R.T.	EstConc	Area	Relative to ISTD	R.T.
3.87	1.01 ug/L	26344	1,4-Difluorobenzene	6.26

Hit#	of	Tentative ID	MW	MolForm	CAS#	Qual
1	5	Thiirane	60	C2H4S	000420-12-2	86
2		Thiirane	60	C2H4S	000420-12-2	78
3		Thiirane	60	C2H4S	000420-12-2	78
4		Hydrazine, 1,1-dimethyl-	60	C2H8N2	000057-14-7	45
5		Hydrazine, ethyl-	60	C2H8N2	000624-80-6	9



Data Path : Z:\VOASRV\HPCHEM1\MSVOA U\DATA\VU102620\  
 Data File : VU040956.D  
 Acq On : 26 Oct 2020 19:53  
 Operator : SY/MD  
 Sample : L4492-14  
 Misc : 25.0mL/MSVOA U/WATER  
 ALS Vial : 25 Sample Multiplier: 1

Instrument :  
 MSVOA\_U  
 ClientSampleID :  
 C0AP2

Quant Method : Z:\VOASRV\HPCHEM1\MSVOA\_U\METHOD\SOMUTR102620WMA.M  
 Quant Title : TRACE VOA SOM01.0

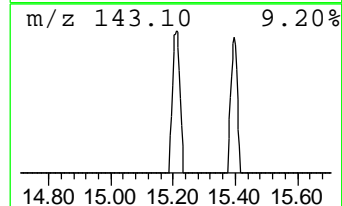
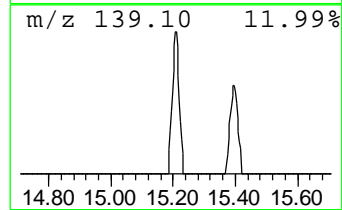
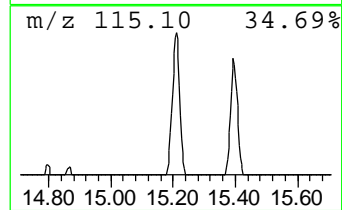
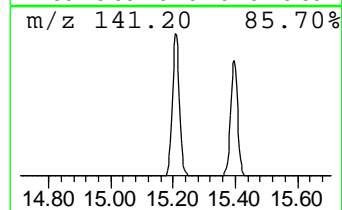
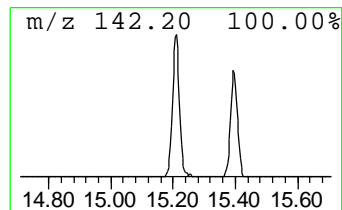
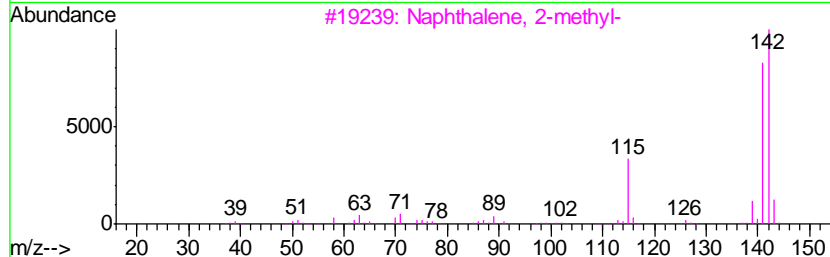
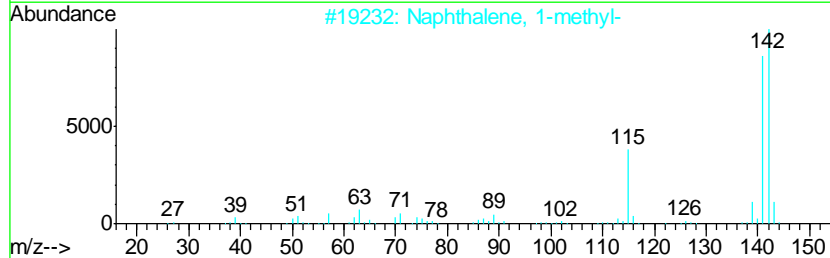
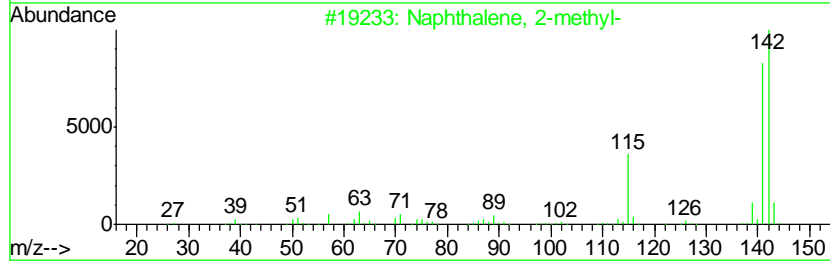
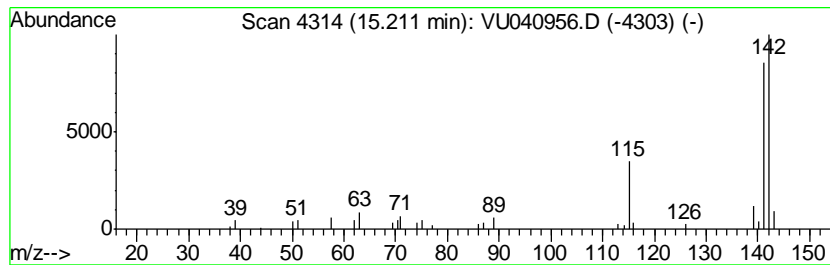
TIC Library : C:\DATABASE\NIST11.L  
 TIC Integration Parameters: LSCINT.P

\*\*\*\*\*  
 Peak Number 5 Naphthalene, 2-methyl- Concentration Rank 3

R.T.	EstConc	Area	Relative to ISTD	R.T.
15.21	1.13 ug/L	33476	1,4-Dichlorobenzene-d4	11.81

Hit#	of	Tentative ID	MW	MolForm	CAS#	Qual
1	5	Naphthalene, 2-methyl-	142	C11H10	000091-57-6	95
2		Naphthalene, 1-methyl-	142	C11H10	000090-12-0	95
3		Naphthalene, 2-methyl-	142	C11H10	000091-57-6	93
4		1,4-Methanonaphthalene, 1,4-dihy...	142	C11H10	004453-90-1	93
5		Bicyclo[4.4.1]undeca-1,3,5,7,9-p...	142	C11H10	002443-46-1	91



Data Path : Z:\VOASRV\HPCHEM1\MSVOA U\DATA\VU102620\  
 Data File : VU040956.D  
 Acq On : 26 Oct 2020 19:53  
 Operator : SY/MD  
 Sample : L4492-14  
 Misc : 25.0mL/MSVOA U/WATER  
 ALS Vial : 25 Sample Multiplier: 1

Instrument :  
 MSVOA\_U  
 ClientSampled :  
 C0AP2

Quant Method : Z:\VOASRV\HPCHEM1\MSVOA\_U\METHOD\SOMUTR102620WMA.M  
 Quant Title : TRACE VOA SOM01.0

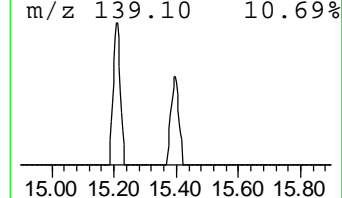
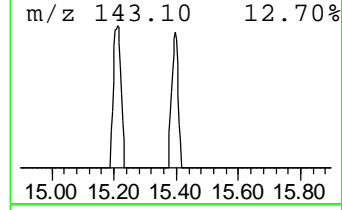
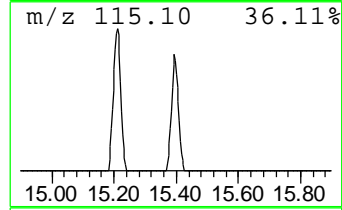
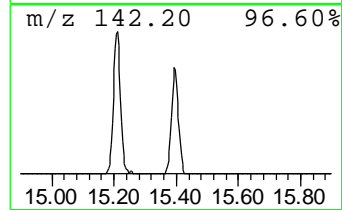
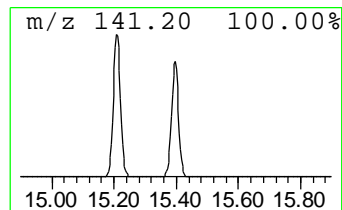
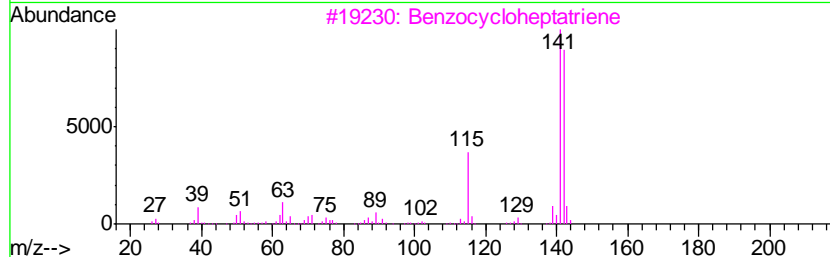
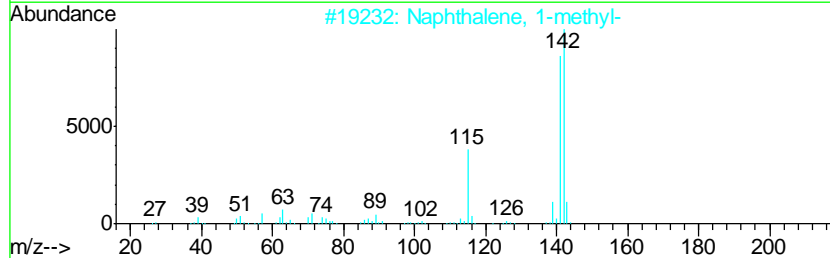
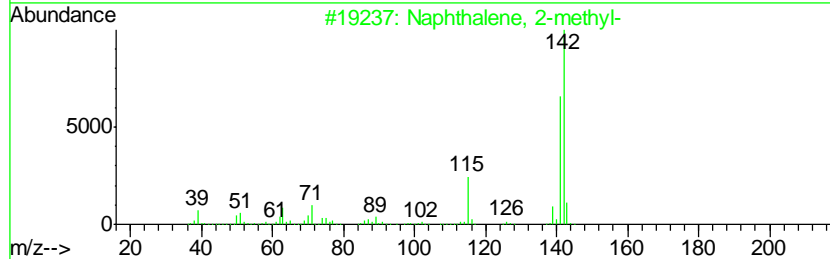
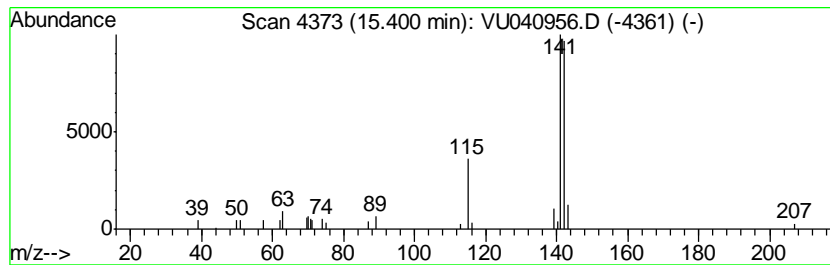
TIC Library : C:\DATABASE\NIST11.L  
 TIC Integration Parameters: LSCINT.P

\*\*\*\*\*  
 Peak Number 6 Naphthalene, 1-methyl- Concentration Rank 5

R.T.	EstConc	Area	Relative to ISTD	R.T.
15.40	0.87 ug/L	25676	1,4-Dichlorobenzene-d4	11.81

Hit#	of	Tentative ID	MW	MolForm	CAS#	Qual
1	5	Naphthalene, 2-methyl-	142	C11H10	000091-57-6	91
2		Naphthalene, 1-methyl-	142	C11H10	000090-12-0	90
3		Benzocycloheptatriene	142	C11H10	000264-09-5	90
4		Naphthalene, 2-methyl-	142	C11H10	000091-57-6	90
5		Naphthalene, 1-methyl-	142	C11H10	000090-12-0	90



Data Path : Z:\VOASRV\HPCHEM1\MSVOA\_U\DATA\VU102620\  
Data File : VU040956.D  
Acq On : 26 Oct 2020 19:53  
Operator : SY/MD  
Sample : L4492-14  
Misc : 25.0mL/MSVOA\_U/WATER  
ALS Vial : 25 Sample Multiplier: 1

Instrument :  
MSVOA\_U  
ClientSampleId :  
C0AP2

Quant Method : Z:\VOASRV\HPCHEM1\MSVOA\_U\METHOD\SOMUTR102620WMA.M  
Quant Title : TRACE VOA SOM01.0

TIC Library : C:\DATABASE\NIST11.L  
TIC Integration Parameters: LSCINT.P

TIC Top Hit name	RT	EstConc	Units	Response	--Internal Standard--			
					#	RT	Resp	Conc
(DEL) Alkane: Str...	1.37	3.5	ug/L	91174	1	6.26	129875	5.0
(DEL) Alkane: Cyc...	2.17	0.7	ug/L	17059	1	6.26	129875	5.0
Thiirane	3.87	1.0	ug/L	26344	1	6.26	129875	5.0
Naphthalene, 2-me...	15.21	1.1	ug/L	33476	3	11.81	148170	5.0
Naphthalene, 1-me...	15.40	0.9	ug/L	25676	3	11.81	148170	5.0