

Data Path : Z:\voasrv\HPCHEM1\MSVOA\_U\Data\VU102822\  
 Data File : VU051574.D  
 Acq On : 28 Oct 2022 17:54  
 Operator : JC/MD  
 Sample : N5300-07  
 Misc : 25.0mL/MSVOA\_U/WATER  
 ALS Vial : 15 Sample Multiplier: 1

Instrument :  
 MSVOA\_U  
 ClientSampleId :  
 BHAC1

Integration Parameters: rteint.p

Integrator: RTE  
 Smoothing : ON Filtering: 5  
 Sampling : 1 Min Area: 3 % of largest Peak  
 Start Thrs: 0.1 Max Peaks: 100  
 Stop Thrs : 0 Peak Location: TOP

If leading or trailing edge < 100 prefer < Baseline drop else tangent >  
 Peak separation: 5

Method : Z:\voasrv\HPCHEM1\MSVOA\_U\Method\SFAMUTR102822WMA.M  
 Title : TRACE VOA SFAM1.0

Signal : TIC: VU051574.D\data.ms

peak #	R.T. min	first scan	max scan	last scan	PK TY	peak height	corr. area	corr. % max.	% of total
1	1.395	12	17	26	rVB	22343	28090	1.03%	0.245%
2	1.465	30	39	51	rBV	215264	382308	14.05%	3.337%
3	1.597	75	80	87	rBV	96288	128108	4.71%	1.118%
4	1.909	170	177	194	rVB2	92367	167023	6.14%	1.458%
5	2.372	316	321	345	rVB	49829	87787	3.23%	0.766%
6	2.565	369	381	395	rBV	143756	234353	8.61%	2.046%
7	3.079	535	541	555	rVB3	25516	48266	1.77%	0.421%
8	3.356	612	627	648	rVB	88175	197803	7.27%	1.727%
9	3.880	762	790	807	rBV	12328	56637	2.08%	0.494%
10	3.989	807	824	849	rVV2	186421	475808	17.49%	4.154%
11	4.526	972	991	1008	rBV2	101756	247638	9.10%	2.162%
12	4.620	1008	1020	1054	rVV	173163	428481	15.75%	3.740%
13	5.060	1139	1157	1182	rBV2	174796	394140	14.49%	3.441%
14	5.382	1243	1257	1272	rVB7	13432	31187	1.15%	0.272%
15	5.722	1342	1363	1393	rBV2	318010	877073	32.24%	7.656%
16	6.247	1508	1526	1547	rBV	268329	520627	19.14%	4.545%
17	6.687	1650	1663	1679	rBV	206797	413959	15.22%	3.614%
18	7.565	1924	1936	1955	rBV2	70984	126960	4.67%	1.108%
19	7.896	2018	2039	2055	rBV	308378	542424	19.94%	4.735%
20	8.179	2116	2127	2143	rBV	43632	74581	2.74%	0.651%
21	8.632	2256	2268	2304	rBV	523227	976484	35.89%	8.524%
22	9.446	2498	2521	2551	rBV2	1251800	2720716	100.00%	23.751%
23	10.754	2912	2928	2939	rVV	182398	296618	10.90%	2.589%
24	10.886	2957	2969	2981	rBV4	37626	67981	2.50%	0.593%
25	11.028	3005	3013	3024	rVB2	25740	44297	1.63%	0.387%
26	11.809	3244	3256	3276	rBV3	367350	882777	32.45%	7.706%
27	12.092	3327	3344	3356	rBV2	90179	150223	5.52%	1.311%
28	12.192	3362	3375	3398	rBV2	349915	671137	24.67%	5.859%
29	12.298	3401	3408	3421	rVB2	17798	29056	1.07%	0.254%
30	12.860	3576	3583	3598	rVB3	41792	68087	2.50%	0.594%
31	12.970	3611	3617	3627	rVB	22081	31679	1.16%	0.277%
32	16.883	4826	4834	4846	rBV3	35596	53081	1.95%	0.463%

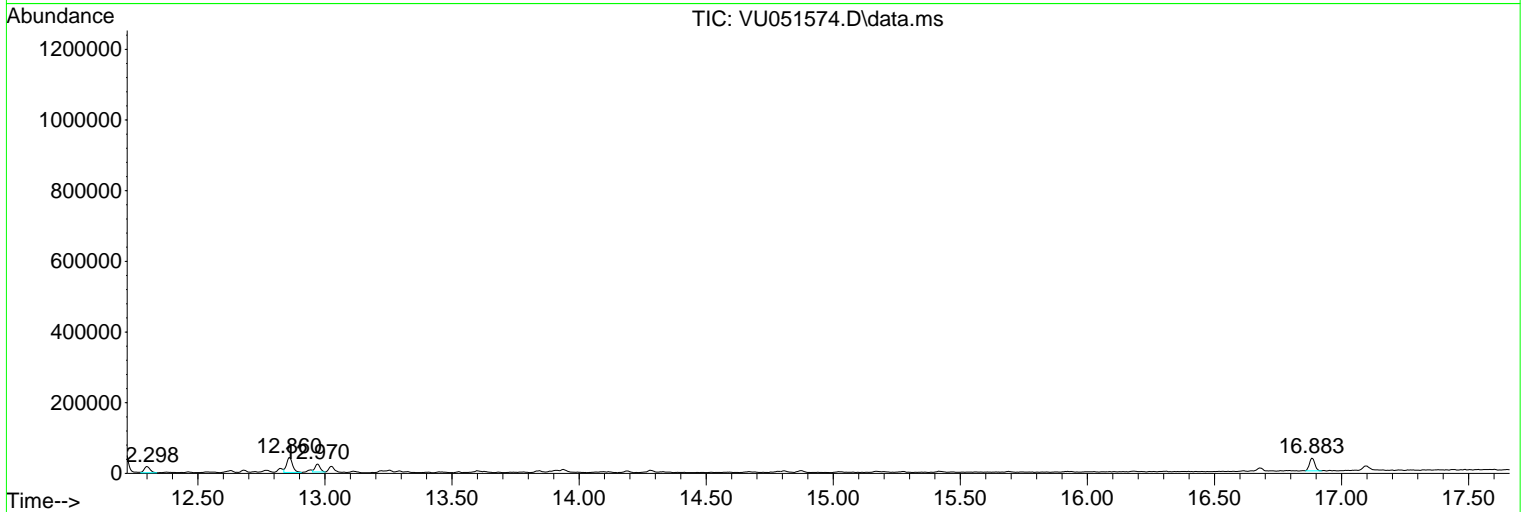
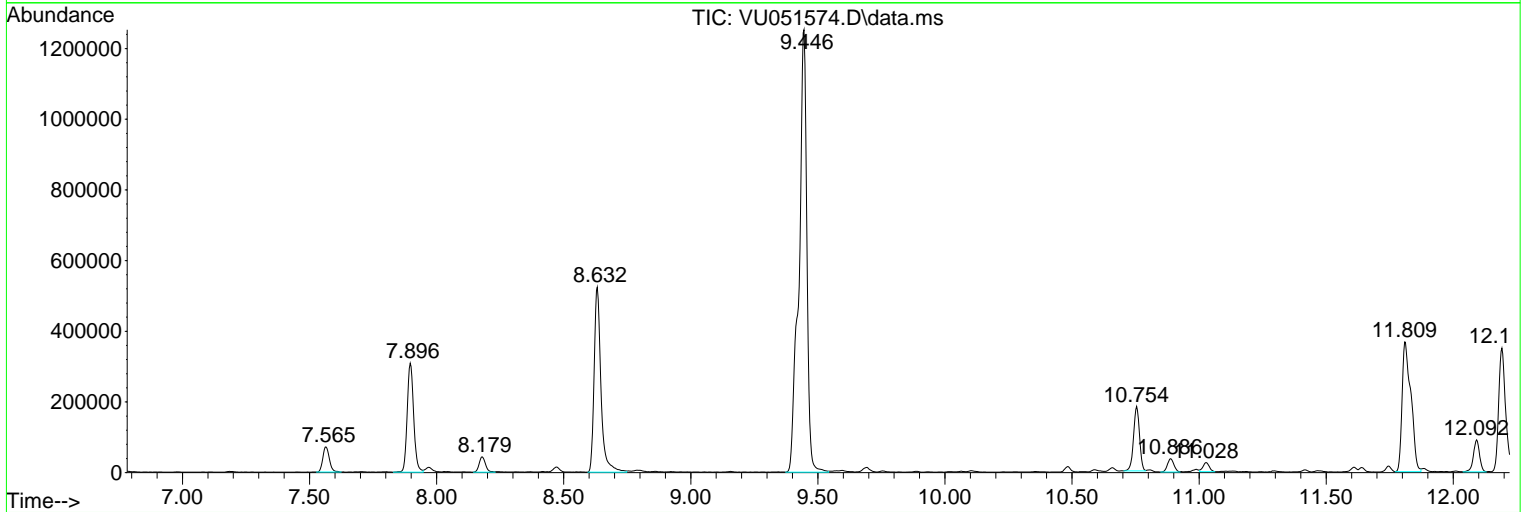
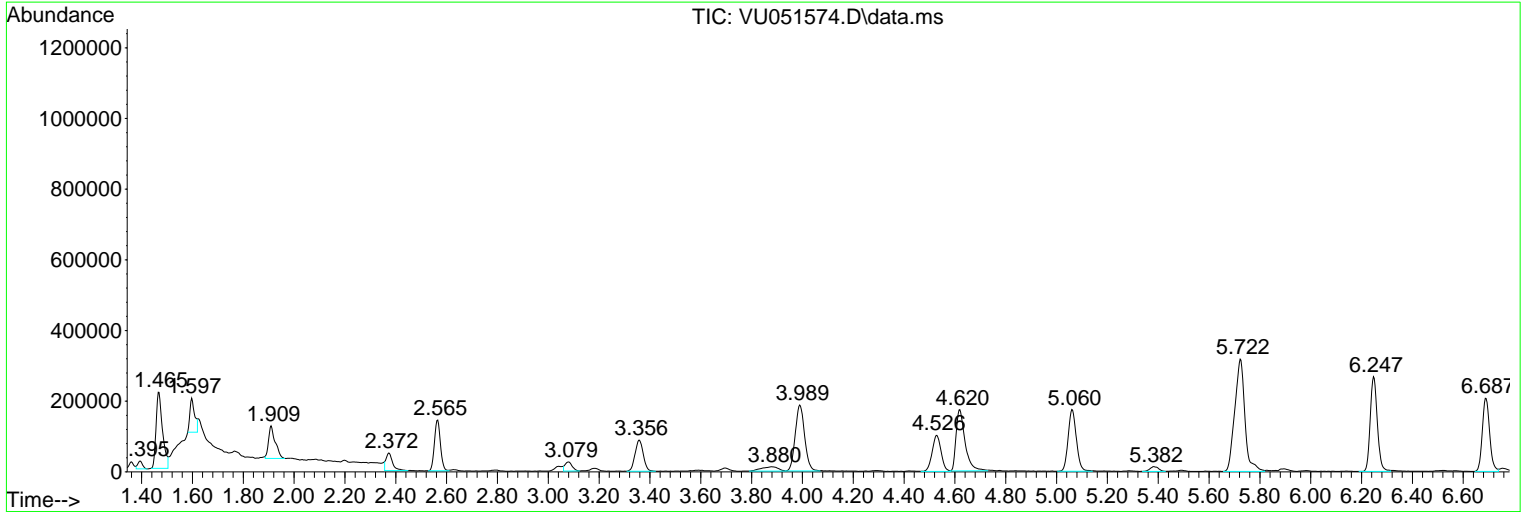
Sum of corrected areas: 11455389

Data Path : Z:\voasrv\HPCHEM1\MSVOA\_U\Data\VU102822\  
 Data File : VU051574.D  
 Acq On : 28 Oct 2022 17:54  
 Operator : JC/MD  
 Sample : N5300-07  
 Misc : 25.0mL/MSVOA\_U/WATER  
 ALS Vial : 15 Sample Multiplier: 1

Instrument :  
 MSVOA\_U  
 ClientSampleId :  
 BHAC1

Quant Method : Z:\voasrv\HPCHEM1\MSVOA\_U\Method\SFAMUTR102822WMA.M  
 Quant Title : TRACE VOA SFAM1.0

TIC Library : C:\Database\NIST20.L  
 TIC Integration Parameters: LSCINT.P



Data Path : Z:\voasrv\HPCHEM1\MSVOA\_U\Data\VU102822\  
 Data File : VU051574.D  
 Acq On : 28 Oct 2022 17:54  
 Operator : JC/MD  
 Sample : N5300-07  
 Misc : 25.0mL/MSVOA\_U/WATER  
 ALS Vial : 15 Sample Multiplier: 1

Instrument :  
 MSVOA\_U  
 ClientSampleId :  
 BHAC1

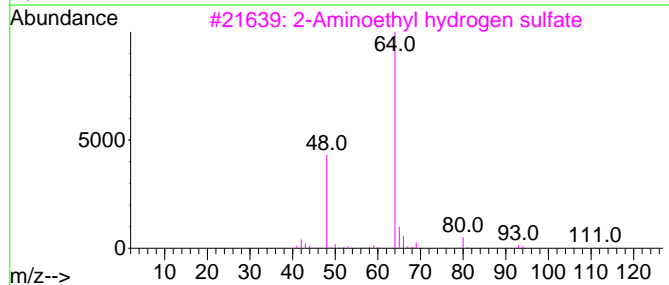
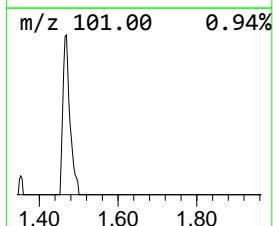
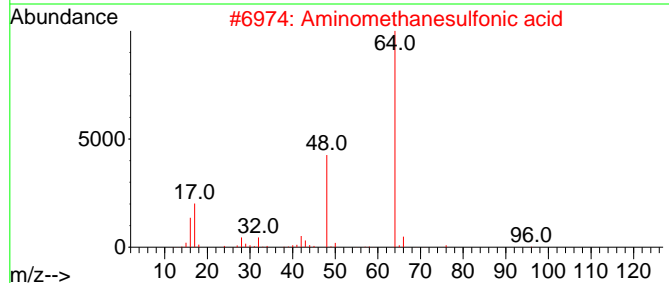
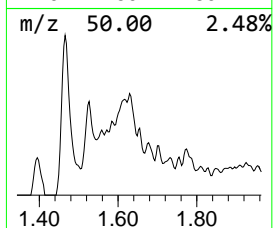
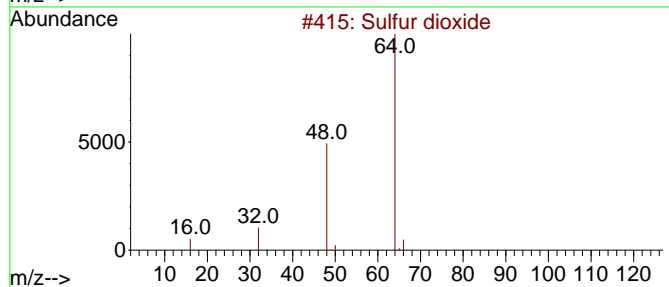
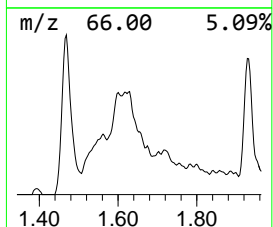
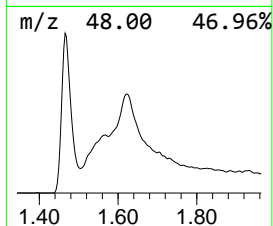
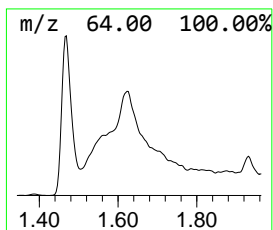
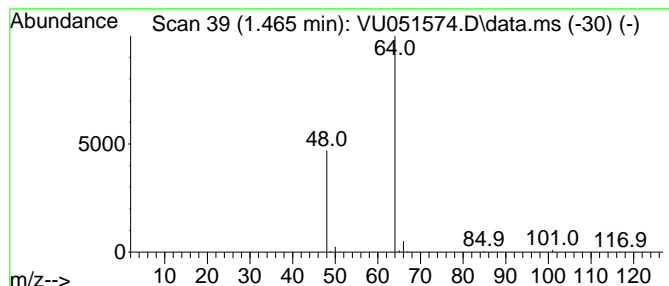
Quant Method : Z:\voasrv\HPCHEM1\MSVOA\_U\Method\SFAMUTR102822WMA.M  
 Quant Title : TRACE VOA SFAM1.0

TIC Library : C:\Database\NIST20.L  
 TIC Integration Parameters: LSCINT.P

\*\*\*\*\*  
 Peak Number 1 Sulfur dioxide Concentration Rank 2

R.T.	EstConc	Area	Relative to ISTD	R.T.
1.465	3.67 ug/L	382308	1,4-Difluorobenzene	6.247

Hit#	of	5	Tentative ID	MW	MolForm	CAS#	Qual
1			Sulfur dioxide	64	O2S	007446-09-5	83
2			Aminomethanesulfonic acid	111	CH5NO3S	013881-91-9	74
3			2-Aminoethyl hydrogen sulfate	141	C2H7NO4S	000926-39-6	74
4			Aminomethanesulfonic acid	111	CH5NO3S	013881-91-9	64
5			(N-(-2-Acetamido))-2-aminoethane...	182	C4H10N2O4S	007365-82-4	9



Data Path : Z:\voasrv\HPCHEM1\MSVOA\_U\Data\VU102822\  
 Data File : VU051574.D  
 Acq On : 28 Oct 2022 17:54  
 Operator : JC/MD  
 Sample : N5300-07  
 Misc : 25.0mL/MSVOA\_U/WATER  
 ALS Vial : 15 Sample Multiplier: 1

Instrument :  
 MSVOA\_U  
 ClientSampleId :  
 BHAC1

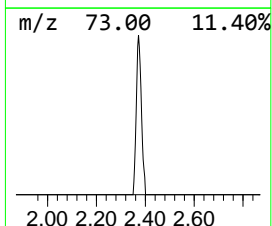
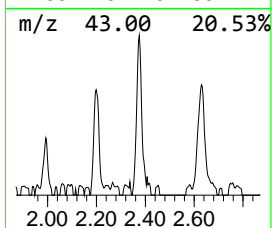
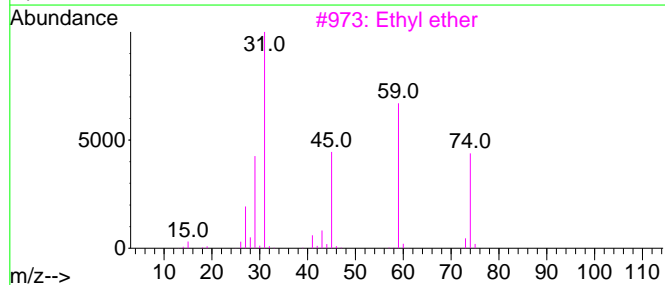
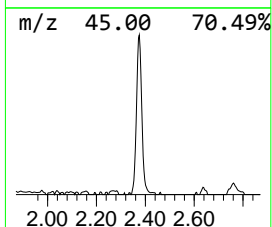
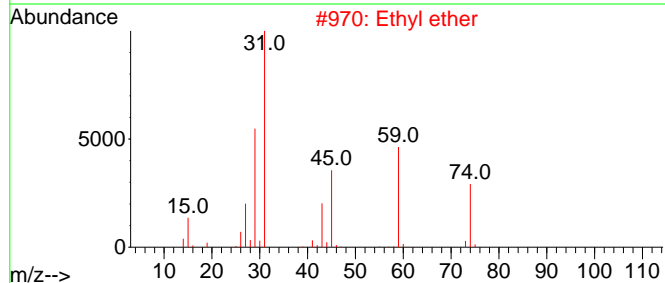
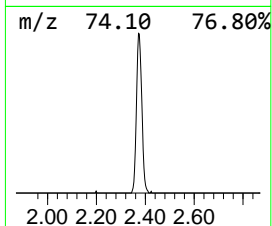
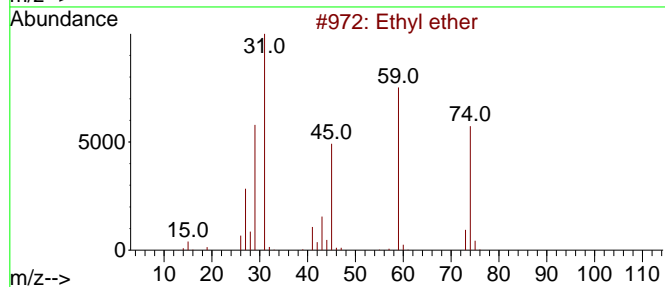
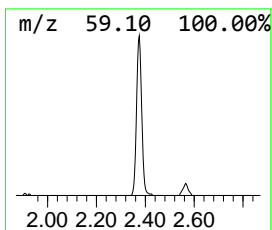
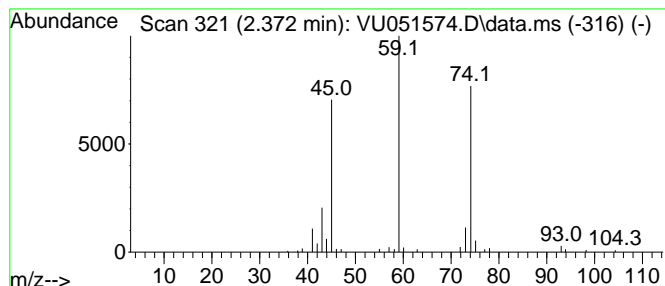
Quant Method : Z:\voasrv\HPCHEM1\MSVOA\_U\Method\SFAMUTR102822WMA.M  
 Quant Title : TRACE VOA SFAM1.0

TIC Library : C:\Database\NIST20.L  
 TIC Integration Parameters: LSCINT.P

\*\*\*\*\*  
 Peak Number 2 Ethyl ether Concentration Rank 7

R.T.	EstConc	Area	Relative to ISTD	R.T.
2.372	0.84 ug/L	87787	1,4-Difluorobenzene	6.247

Hit#	of 5	Tentative ID	MW	MolForm	CAS#	Qual
1		Ethyl ether	74	C4H10O	000060-29-7	91
2		Ethyl ether	74	C4H10O	000060-29-7	90
3		Ethyl ether	74	C4H10O	000060-29-7	90
4		Ethane, 1,2-diethoxy-	118	C6H14O2	000629-14-1	83
5		Propanoic acid	74	C3H6O2	000079-09-4	37



Data Path : Z:\voasrv\HPCHEM1\MSVOA\_U\Data\VU102822\  
 Data File : VU051574.D  
 Acq On : 28 Oct 2022 17:54  
 Operator : JC/MD  
 Sample : N5300-07  
 Misc : 25.0mL/MSVOA\_U/WATER  
 ALS Vial : 15 Sample Multiplier: 1

Instrument :  
 MSVOA\_U  
 ClientSampleId :  
 BHAC1

Quant Method : Z:\voasrv\HPCHEM1\MSVOA\_U\Method\SFAMUTR102822WMA.M  
 Quant Title : TRACE VOA SFAM1.0

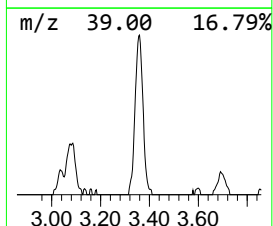
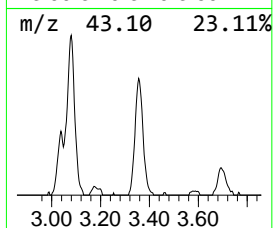
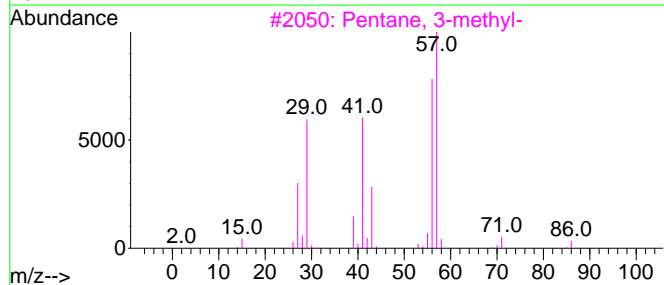
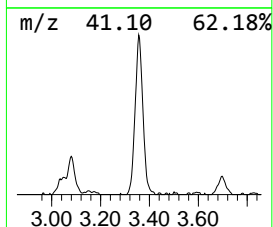
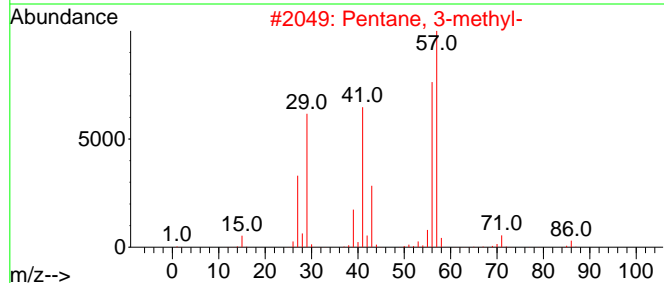
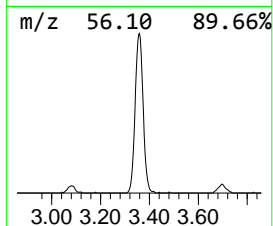
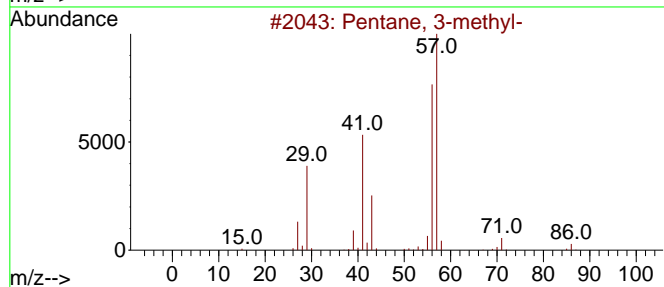
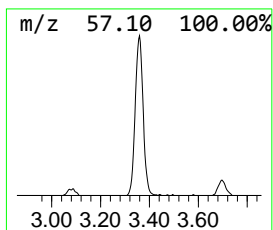
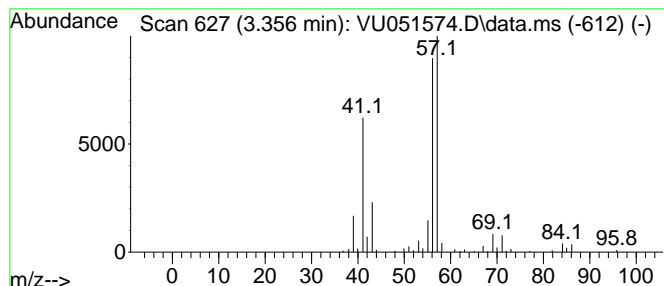
TIC Library : C:\Database\NIST20.L  
 TIC Integration Parameters: LSCINT.P

\*\*\*\*\*  
 Peak Number 3 (DEL) Alkane: Straight-Chai... Concentration Rank 4

R.T.	EstConc	Area	Relative to ISTD	R.T.
3.356	1.90 ug/L	197803	1,4-Difluorobenzene	6.247

Hit#	of 5	Tentative ID	MW	MolForm	CAS#	Qual
1		Pentane, 3-methyl-	86	C6H14	000096-14-0	80
2		Pentane, 3-methyl-	86	C6H14	000096-14-0	80
3		Pentane, 3-methyl-	86	C6H14	000096-14-0	80
4		Hexane, 2,2,3-trimethyl-	128	C9H20	016747-25-4	64
5		Butane, 2,2,3-trimethyl-	100	C7H16	000464-06-2	56



Data Path : Z:\voasrv\HPCHEM1\MSVOA\_U\Data\VU102822\  
 Data File : VU051574.D  
 Acq On : 28 Oct 2022 17:54  
 Operator : JC/MD  
 Sample : N5300-07  
 Misc : 25.0mL/MSVOA\_U/WATER  
 ALS Vial : 15 Sample Multiplier: 1

Instrument :  
 MSVOA\_U  
 ClientSampleId :  
 BHAC1

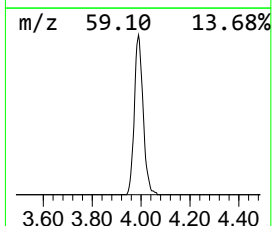
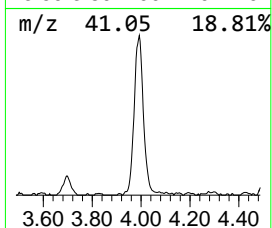
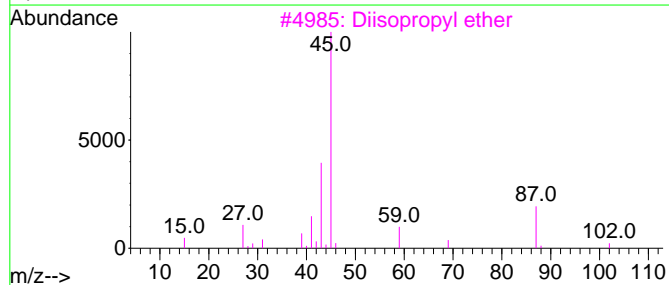
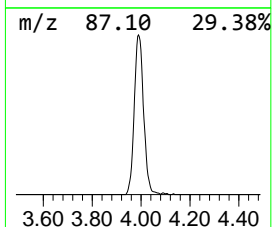
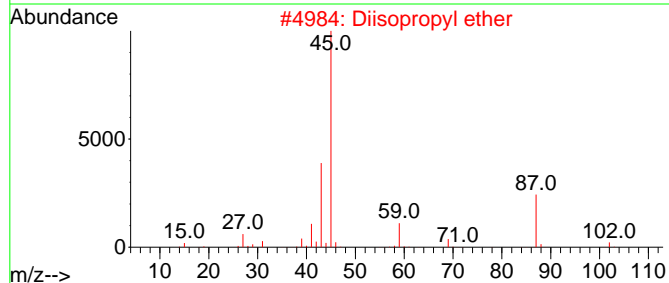
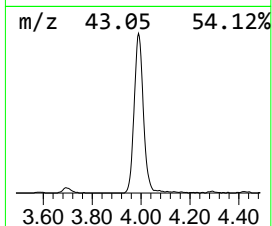
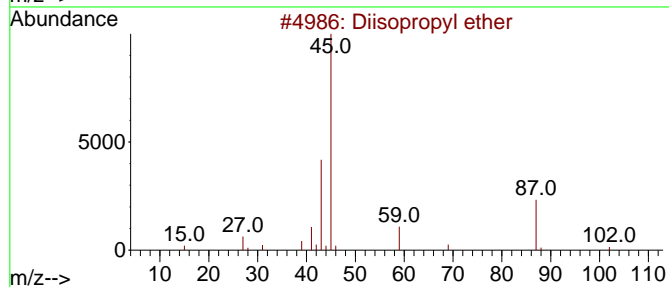
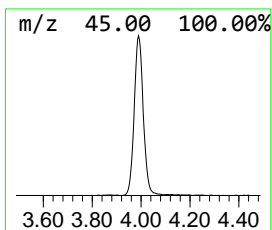
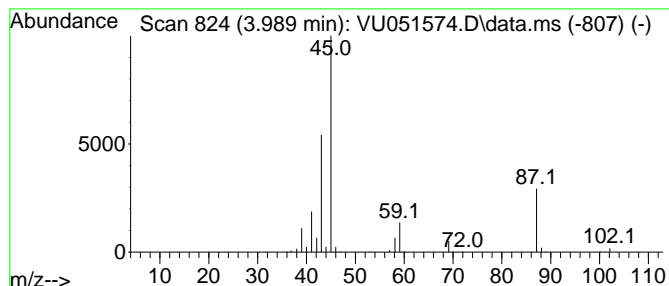
Quant Method : Z:\voasrv\HPCHEM1\MSVOA\_U\Method\SFAMUTR102822WMA.M  
 Quant Title : TRACE VOA SFAM1.0

TIC Library : C:\Database\NIST20.L  
 TIC Integration Parameters: LSCINT.P

\*\*\*\*\*  
 Peak Number 5 Diisopropyl ether Concentration Rank 1

R.T.	EstConc	Area	Relative to ISTD	R.T.
3.989	4.57 ug/L	475808	1,4-Difluorobenzene	6.247

Hit#	of	5	Tentative ID	MW	MolForm	CAS#	Qual
1			Diisopropyl ether	102	C6H14O	000108-20-3	90
2			Diisopropyl ether	102	C6H14O	000108-20-3	86
3			Diisopropyl ether	102	C6H14O	000108-20-3	78
4			1-Propanol, 2-(1-methylethoxy)-	118	C6H14O2	003944-37-4	78
5			Diisopropyl ether	102	C6H14O	000108-20-3	78



Data Path : Z:\voasrv\HPCHEM1\MSVOA\_U\Data\VU102822\  
 Data File : VU051574.D  
 Acq On : 28 Oct 2022 17:54  
 Operator : JC/MD  
 Sample : N5300-07  
 Misc : 25.0mL/MSVOA\_U/WATER  
 ALS Vial : 15 Sample Multiplier: 1

Instrument :  
 MSVOA\_U  
 ClientSampleId :  
 BHAC1

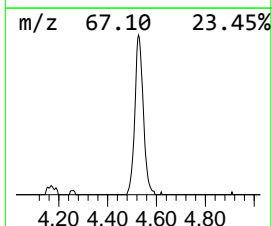
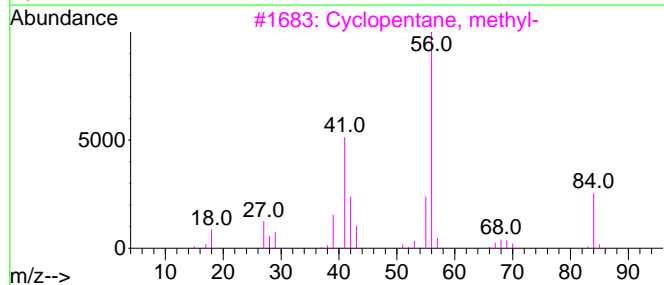
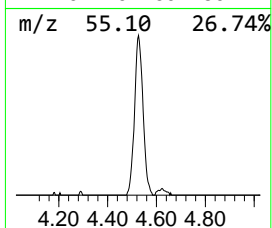
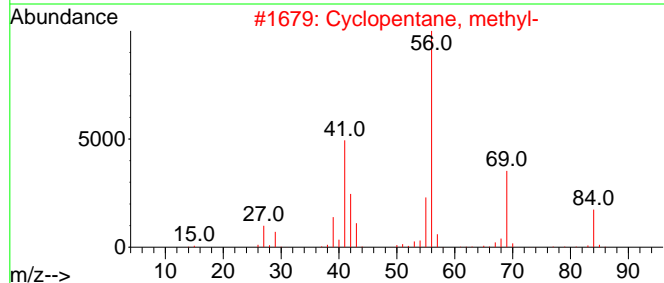
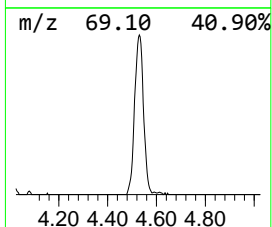
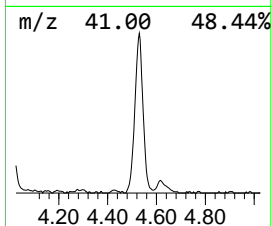
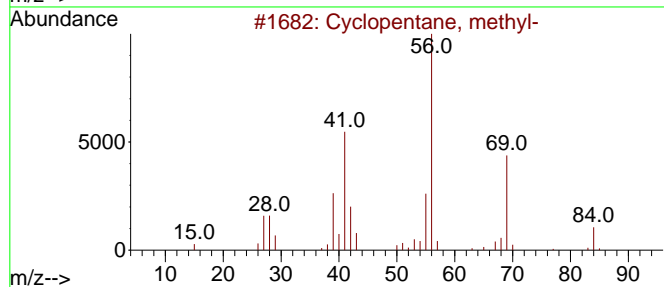
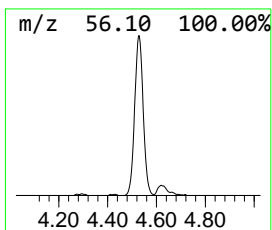
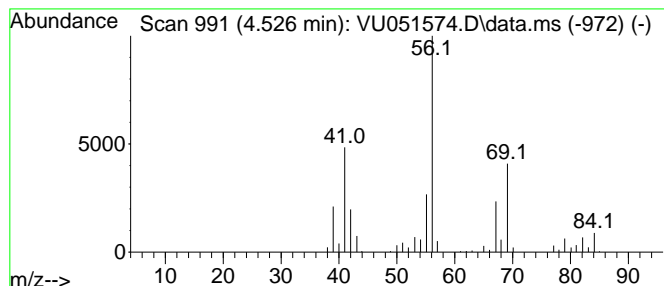
Quant Method : Z:\voasrv\HPCHEM1\MSVOA\_U\Method\SFAMUTR102822WMA.M  
 Quant Title : TRACE VOA SFAM1.0

TIC Library : C:\Database\NIST20.L  
 TIC Integration Parameters: LSCINT.P

\*\*\*\*\*  
 Peak Number 6 (DEL) Alkane: Cyclic4.526 Concentration Rank 3

R.T.	EstConc	Area	Relative to ISTD	R.T.
4.526	2.38 ug/L	247638	1,4-Difluorobenzene	6.247

Hit#	of 5	Tentative ID	MW	MolForm	CAS#	Qual
1		Cyclopentane, methyl-	84	C6H12	000096-37-7	81
2		Cyclopentane, methyl-	84	C6H12	000096-37-7	59
3		Cyclopentane, methyl-	84	C6H12	000096-37-7	59
4		Cyclopentane, methyl-	84	C6H12	000096-37-7	59
5		Cyclohexane	84	C6H12	000110-82-7	53



Data Path : Z:\voasrv\HPCHEM1\MSVOA\_U\Data\VU102822\  
 Data File : VU051574.D  
 Acq On : 28 Oct 2022 17:54  
 Operator : JC/MD  
 Sample : N5300-07  
 Misc : 25.0mL/MSVOA\_U/WATER  
 ALS Vial : 15 Sample Multiplier: 1

Instrument :  
 MSVOA\_U  
 ClientSampleId :  
 BHAC1

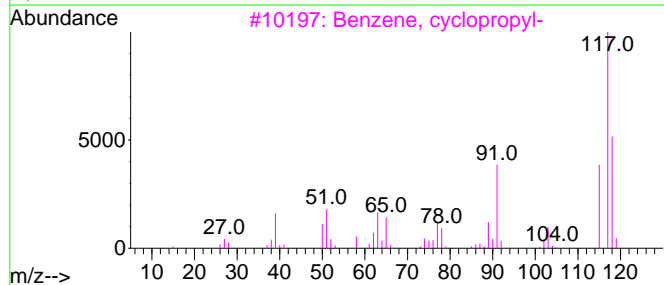
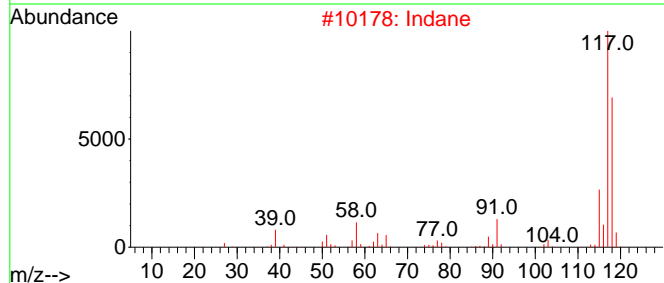
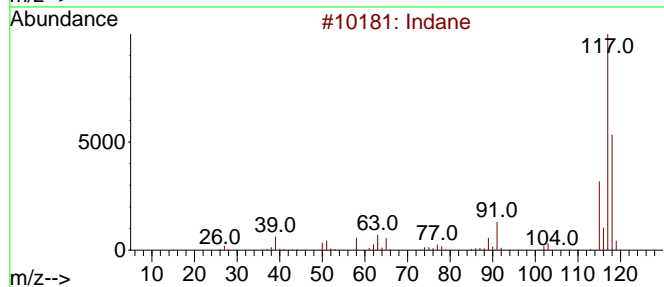
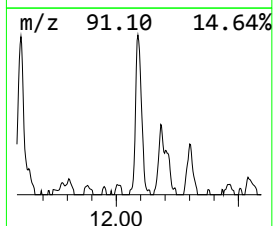
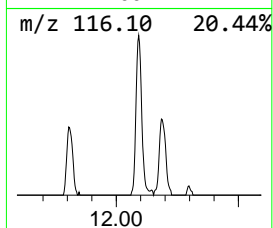
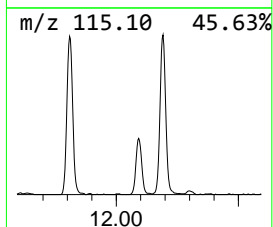
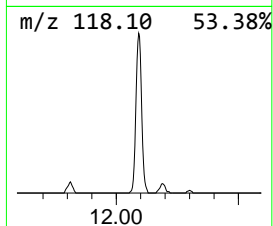
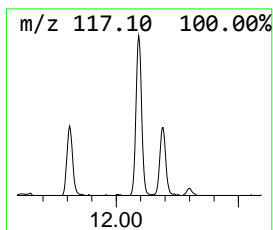
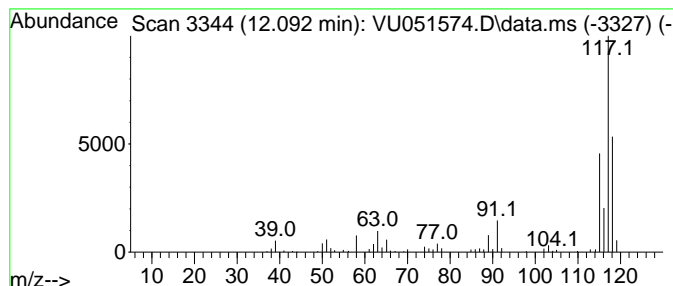
Quant Method : Z:\voasrv\HPCHEM1\MSVOA\_U\Method\SFAMUTR102822WMA.M  
 Quant Title : TRACE VOA SFAM1.0

TIC Library : C:\Database\NIST20.L  
 TIC Integration Parameters: LSCINT.P

\*\*\*\*\*  
 Peak Number 8 Indane Concentration Rank 6

R.T.	EstConc	Area	Relative to ISTD	R.T.
12.092	0.85 ug/L	150223	1,4-Dichlorobenzene-d4	11.809

Hit#	of 5	Tentative ID	MW	MolForm	CAS#	Qual
1		Indane	118	C9H10	000496-11-7	93
2		Indane	118	C9H10	000496-11-7	64
3		Benzene, cyclopropyl-	118	C9H10	000873-49-4	58
4		(Z)-1-Phenylpropene	118	C9H10	000766-90-5	58
5		Indane	118	C9H10	000496-11-7	55





Data Path : Z:\voasrv\HPCHEM1\MSVOA\_U\Data\VU102822\  
Data File : VU051574.D  
Acq On : 28 Oct 2022 17:54  
Operator : JC/MD  
Sample : N5300-07  
Misc : 25.0mL/MSVOA\_U/WATER  
ALS Vial : 15 Sample Multiplier: 1

Instrument :  
MSVOA\_U  
ClientSampleId :  
BHAC1

Quant Method : Z:\voasrv\HPCHEM1\MSVOA\_U\Method\SFAMUTR102822WMA.M  
Quant Title : TRACE VOA SFAM1.0

TIC Library : C:\Database\NIST0.L  
TIC Integration Parameters: LSCINT.P

TIC Top Hit name	RT	EstConc	Units	Response	--Internal Standard--			
					#	RT	Resp	Conc
Sulfur dioxide	1.465	3.7	ug/L	382308	1	6.247	520627	5.0
Ethyl ether	2.372	0.8	ug/L	87787	1	6.247	520627	5.0
(DEL) Alkane: S...	3.356	1.9	ug/L	197803	1	6.247	520627	5.0
Diisopropyl ether	3.989	4.6	ug/L	475808	1	6.247	520627	5.0
(DEL) Alkane: C...	4.526	2.4	ug/L	247638	1	6.247	520627	5.0
Indane	12.092	0.8	ug/L	150223	3	11.809	882777	5.0