

Data Path : Z:\VOASRV\HPCHEM1\MSVOA U\DATA\VU103018\
 Data File : VU027878.D
 Acq On : 30 Oct 2018 17:52
 Operator : MD/SY
 Sample : MDL07
 Misc : 25.0mL/MSVOA U/WATER
 ALS Vial : 17 Sample Multiplier: 1

Instrument :
 MSVOA_U
 ClientSampled :
 MDL07

Manual Integrations
 APPROVED

MMDadoda
 11/1/2018 11:16:00 AM

Quant Time: Oct 31 02:50:32 2018
 Quant Method : Z:\VOASRV\HPCHEM1\MSVOA_U\METHOD\SOMUTR103018WMA.M
 Quant Title : TRACE VOA SOM01.0
 QLast Update : Wed Oct 31 02:11:32 2018
 Response via : Initial Calibration

Internal Standards	R.T.	QIon	Response	Conc	Units	Dev(Min)
1) 1,4-Difluorobenzene	5.89	114	80753	5.00	ug/L	0.00
28) Chlorobenzene-d5	9.09	117	78699	5.00	ug/L	0.00
60) 1,4-Dichlorobenzene-d4	11.48	152	38841	5.00	ug/L	0.00

System Monitoring Compounds

4) Vinyl Chloride-d3	1.40	65	29660	4.70	ug/L	0.00
Spiked Amount	5.000	Range	40 - 130	Recovery	=	94.00%
7) Chloroethane-d5	1.68	69	23546	4.83	ug/L	0.00
Spiked Amount	5.000	Range	65 - 130	Recovery	=	96.60%
11) 1,1-Dichloroethene-d2	2.28	63	44100	3.68	ug/L	0.00
Spiked Amount	5.000	Range	60 - 125	Recovery	=	73.60%
20) 2-Butanone-d5	4.19	46	94370	50.14	ug/L	-0.01
Spiked Amount	50.000	Range	40 - 130	Recovery	=	100.28%
24) Chloroform-d	4.65	84	52576	4.63	ug/L	0.00
Spiked Amount	5.000	Range	70 - 125	Recovery	=	92.60%
26) 1,2-Dichloroethane-d4	5.31	65	32036	4.91	ug/L	0.00
Spiked Amount	5.000	Range	70 - 130	Recovery	=	98.20%
32) Benzene-d6	5.34	84	100988	4.69	ug/L	0.00
Spiked Amount	5.000	Range	70 - 125	Recovery	=	93.80%
36) 1,2-Dichloropropane-d6	6.33	67	36598	4.80	ug/L	0.00
Spiked Amount	5.000	Range	60 - 140	Recovery	=	96.00%
41) Toluene-d8	7.57	98	95408	4.66	ug/L	0.00
Spiked Amount	5.000	Range	70 - 130	Recovery	=	93.20%
43) trans-1,3-Dichloropropene-	7.85	79	13591	4.60	ug/L	0.00
Spiked Amount	5.000	Range	55 - 130	Recovery	=	92.00%
46) 2-Hexanone-d5	8.31	63	78583	48.65	ug/L	0.00
Spiked Amount	50.000	Range	45 - 130	Recovery	=	97.30%
57) 1,1,2,2-Tetrachloroethane-	10.43	84	25797	4.78	ug/L	0.00
Spiked Amount	5.000	Range	65 - 120	Recovery	=	95.60%
64) 1,2-Dichlorobenzene-d4	11.86	152	35535	4.78	ug/L	0.00
Spiked Amount	5.000	Range	80 - 120	Recovery	=	95.60%

Target Compounds

Target Compounds	R.T.	QIon	Response	Conc	Units	Ovalue
2) Dichlorodifluoromethane	1.21	85	2418	0.304	ug/L	92
3) Chloromethane	1.33	50	2468	0.313	ug/L	90
5) Vinyl chloride	1.40	62	2702	0.344	ug/L #	73
6) Bromomethane	1.64	94	898	0.348	ug/L	99
8) Chloroethane	1.70	64	2055	0.447	ug/L	88
9) Trichlorofluoromethane	1.89	101	3507	0.337	ug/L	98
10) 1,1,2-Trichloro-1,2,2-trif	2.30	101	2038	0.383	ug/L	86
12) 1,1-Dichloroethene	2.29	96	1886	0.376	ug/L #	1
13) Acetone	2.33	43	5162	4.351	ug/L	88
14) Carbon disulfide	2.49	76	5922	0.331	ug/L	96
15) Methyl Acetate	2.62	43	1378m	0.434	ug/L	
16) Methylene chloride	2.71	84	2391	0.424	ug/L	88
17) Methyl tert-butyl Ether	3.01	73	5164	0.345	ug/L	94
18) trans-1,2-Dichloroethene	2.99	96	1828	0.343	ug/L	96
19) 1,1-Dichloroethane	3.45	63	3854	0.342	ug/L	99
21) 2-Butanone	4.28	43	7473	3.623	ug/L	93
22) cis-1,2-Dichloroethene	4.23	96	1803	0.293	ug/L	94

Data Path : Z:\VOASRV\HPCHEM1\MSVOA U\DATA\VU103018\
 Data File : VU027878.D
 Acq On : 30 Oct 2018 17:52
 Operator : MD/SY
 Sample : MDL07
 Misc : 25.0mL/MSVOA U/WATER
 ALS Vial : 17 Sample Multiplier: 1

Instrument :
 MSVOA_U
ClientSampled :
 MDL07

Manual Integrations
APPROVED
 MMDadoda
 11/1/2018 11:16:00 AM

Quant Time: Oct 31 02:50:32 2018
 Quant Method : Z:\VOASRV\HPCHEM1\MSVOA_U\METHOD\SOMUTR103018WMA.M
 Quant Title : TRACE VOA SOM01.0
 QLast Update : Wed Oct 31 02:11:32 2018
 Response via : Initial Calibration

Internal Standards	R.T.	QIon	Response	Conc	Units	Dev(Min)
23) Bromochloromethane	4.56	128	879m	0.344	ug/L	
25) Chloroform	4.67	83	4255	0.373	ug/L	90
27) 1,2-Dichloroethane	5.41	62	2905	0.365	ug/L #	78
29) 1,1,1-Trichloroethane	4.92	97	3335	0.328	ug/L #	70
30) Cyclohexane	4.99	56	3657	0.306	ug/L #	94
31) Carbon tetrachloride	5.14	117	2953	0.339	ug/L	86
33) Benzene	5.39	78	7794	0.313	ug/L	100
34) Trichloroethene	6.19	95	2150	0.331	ug/L	89
35) Methylcyclohexane	6.42	83	3324	0.301	ug/L	95
37) 1,2-Dichloropropane	6.43	63	2194	0.309	ug/L #	90
38) Bromodichloromethane	6.76	83	2548	0.307	ug/L #	88
39) cis-1,3-Dichloropropene	7.27	75	3108	0.305	ug/L	94
40) 4-Methyl-2-pentanone	7.47	43	16572	3.304	ug/L #	91
42) Toluene	7.64	91	8395	0.322	ug/L	98
44) trans-1,3-Dichloropropene	7.88	75	2828m	0.324	ug/L	
45) 1,1,2-Trichloroethane	8.07	97	1450	0.332	ug/L	91
47) Tetrachloroethene	8.22	164	1624	0.326	ug/L	93
48) 2-Hexanone	8.37	43	12850	3.554	ug/L	99
49) Dibromochloromethane	8.48	129	1553	0.294	ug/L	100
50) 1,2-Dibromoethane	8.59	107	1301	0.311	ug/L #	94
51) Chlorobenzene	9.12	112	5232	0.323	ug/L	96
52) Ethylbenzene	9.25	91	9611	0.323	ug/L	99
53) m,p-xylene	9.38	106	3046	0.283	ug/L	86
54) o-xylene	9.78	106	3437	0.325	ug/L	79
55) Styrene	9.80	104	5616	0.316	ug/L	84
56) Isopropylbenzene	10.17	105	9147	0.317	ug/L	97
58) 1,1,2,2-Tetrachloroethane	10.46	83	1620	0.284	ug/L #	55
59) 1,2,3-Trichloropropane	10.49	75	1488m	0.346	ug/L	
61) Bromoform	9.95	173	829	0.290	ug/L #	82
62) 1,3-Dichlorobenzene	11.42	146	3945	0.316	ug/L	97
63) 1,4-Dichlorobenzene	11.51	146	4226	0.338	ug/L	86
65) 1,2-Dichlorobenzene	11.88	146	3983	0.338	ug/L	90
66) 1,2-Dibromo-3-chloropropan	12.66	75	237	0.256	ug/L	97
67) 1,3,5-Trichlorobenzene	12.89	180	3469	0.345	ug/L	94
68) 1,2,4-trichlorobenzene	13.51	180	2661	0.311	ug/L	97
69) Naphthalene	13.75	128	3700	0.278	ug/L #	93
70) 1,2,3-Trichlorobenzene	13.99	180	2082	0.267	ug/L	88

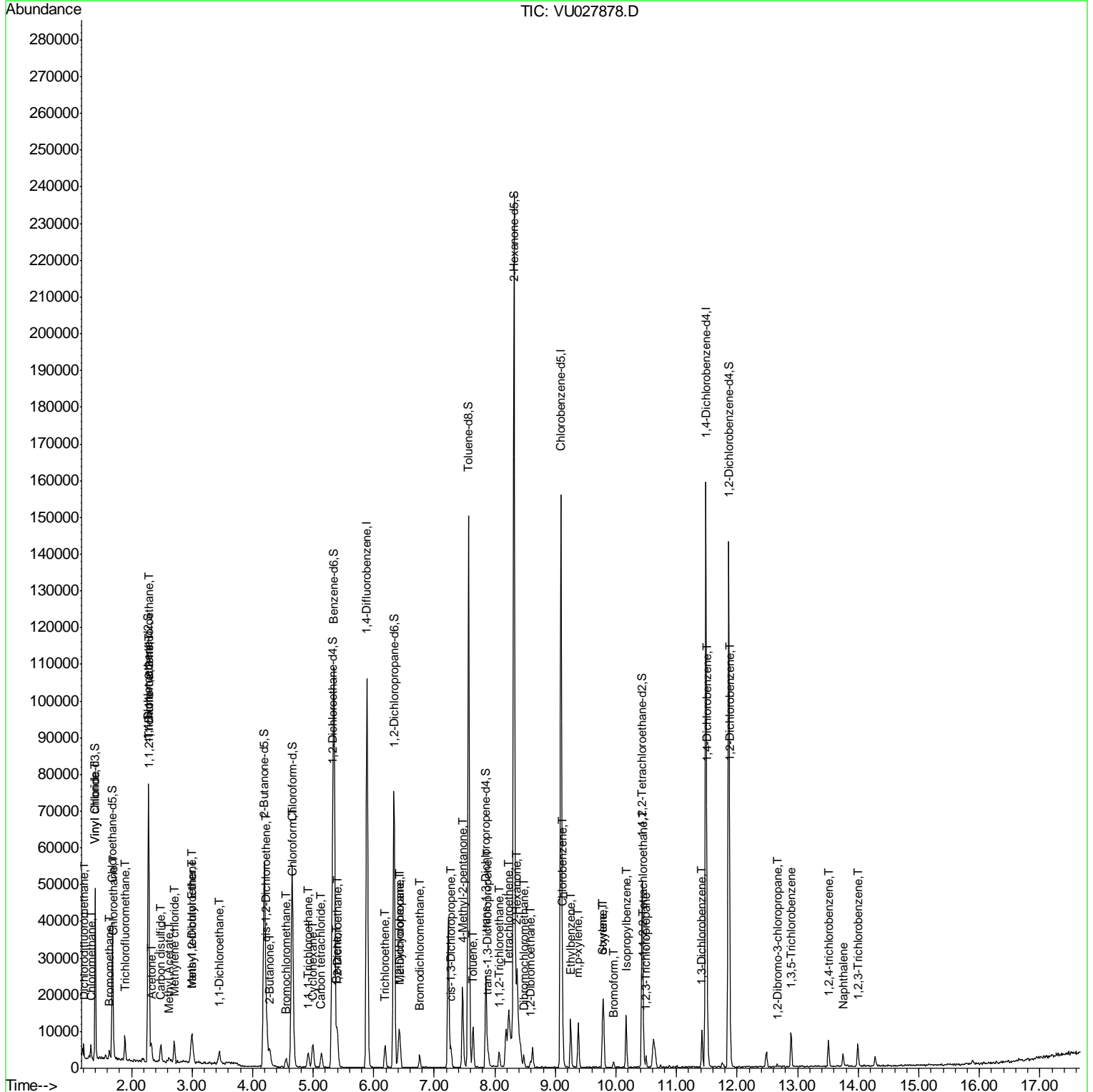
(#) = qualifier out of range (m) = manual integration (+) = signals summed

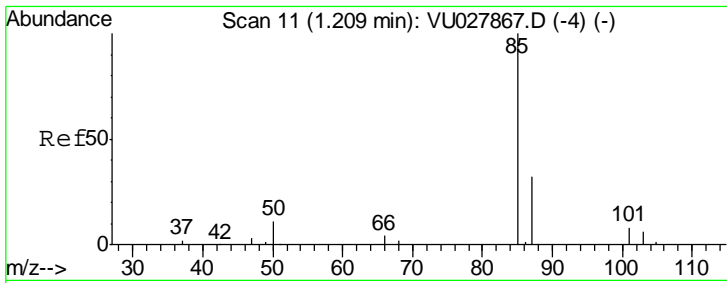
Data Path : Z:\VOASRV\HPCHEM1\MSVOA U\DATA\VU103018\
 Data File : VU027878.D
 Acq On : 30 Oct 2018 17:52
 Operator : MD/SY
 Sample : MDL07
 Misc : 25.0mL/MSVOA U/WATER
 ALS Vial : 17 Sample Multiplier: 1

Instrument : MSVOA_U
 Client Sampled : MDL07

Manual Integrations APPROVED
 MMDadoda
 11/1/2018 11:16:00 AM

Quant Time: Oct 31 02:50:32 2018
 Quant Method : Z:\VOASRV\HPCHEM1\MSVOA_U\METHOD\SOMUTR103018WMA.M
 Quant Title : TRACE VOA SOM01.0
 QLast Update : Wed Oct 31 02:11:32 2018
 Response via : Initial Calibration



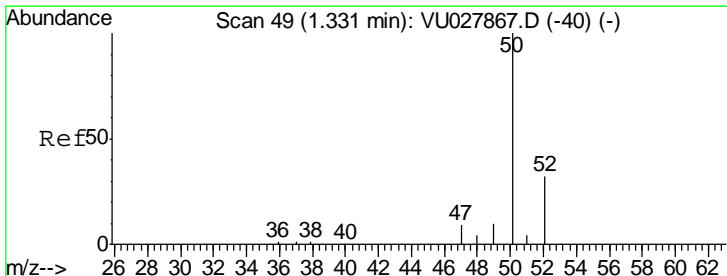
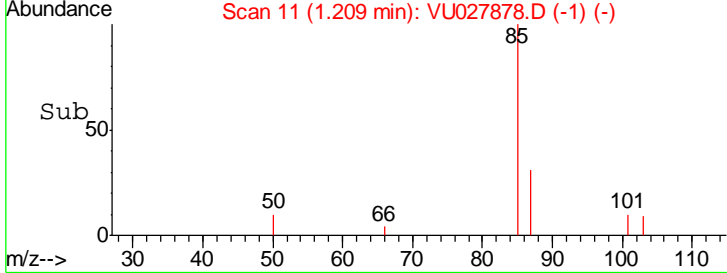
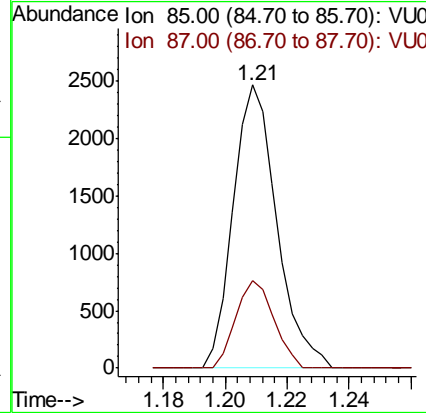
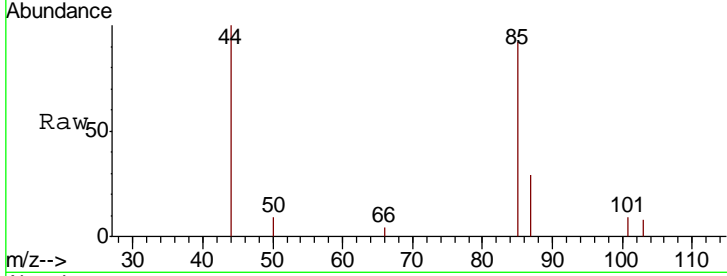


#2
 Dichlorodifluoromethane
 Concen: 0.304 ug/L
 RT: 1.21 min Scan# 11
 Delta R.T. -0.00 min
 Lab File: VU027878.D
 Acq: 30 Oct 2018 17:52

Instrument : MSVOA_U
 ClientSampled : MDL07

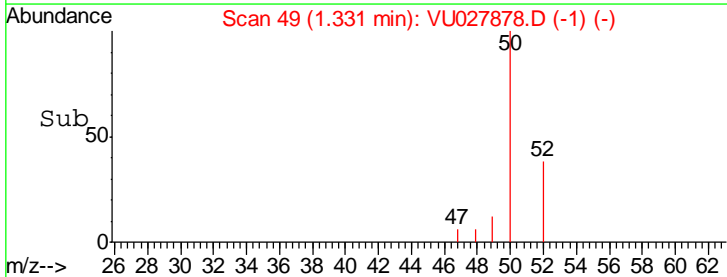
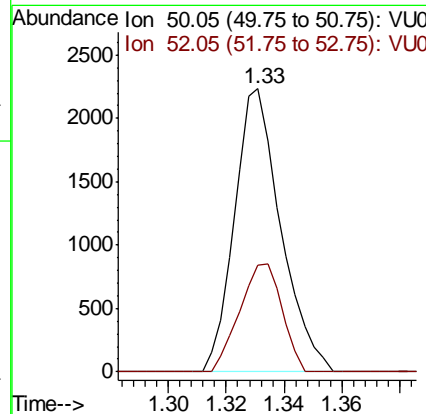
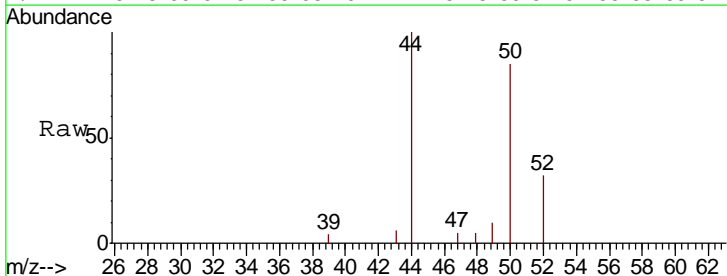
Tgt Ion	Resp	Lower	Upper
85	2418		
85	100		
87	26.9	25.2	37.8

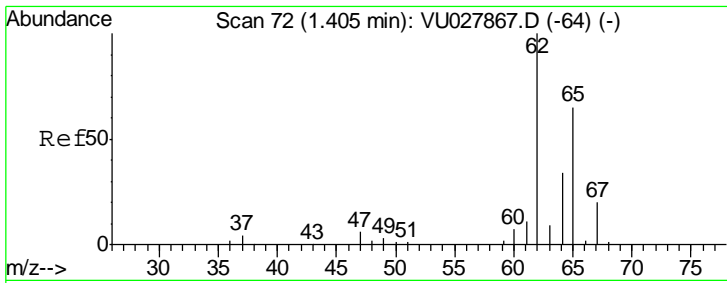
Manual Integrations
APPROVED
 MMDadoda
 11/1/2018 11:16:00 AM



#3
 Chloromethane
 Concen: 0.313 ug/L
 RT: 1.33 min Scan# 49
 Delta R.T. -0.00 min
 Lab File: VU027878.D
 Acq: 30 Oct 2018 17:52

Tgt Ion	Resp	Lower	Upper
50	2468		
50	100		
52	37.7	22.3	41.5



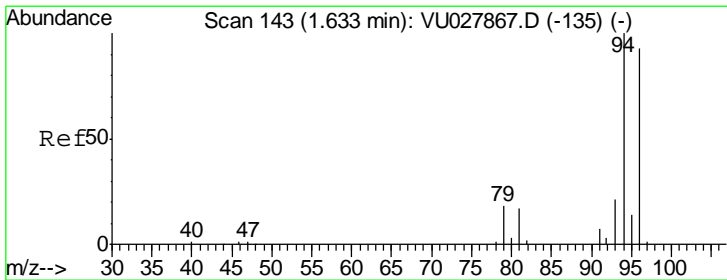
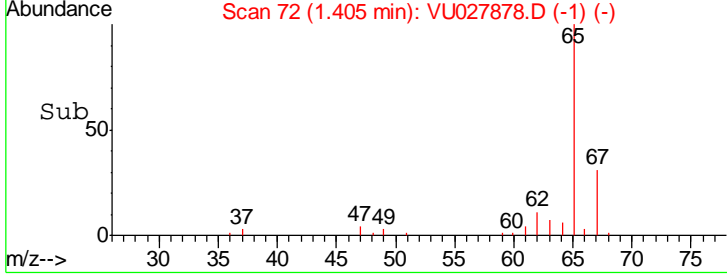
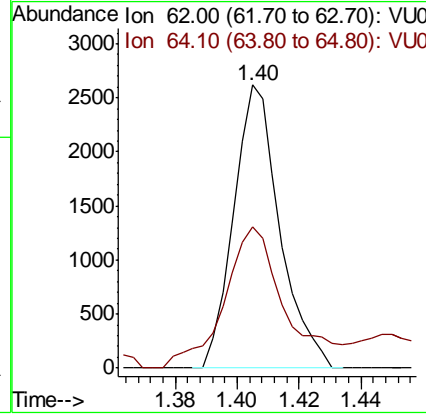
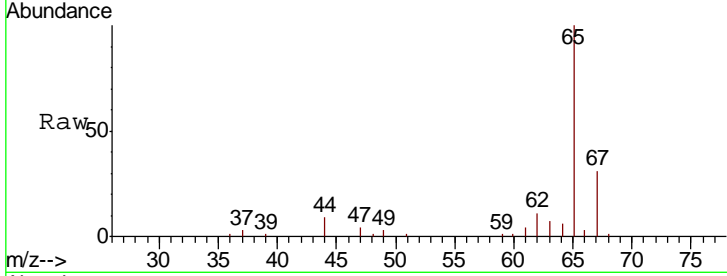


#5
 Vinyl chloride
 Concen: 0.344 ug/L
 RT: 1.40 min Scan# 72
 Delta R.T. -0.00 min
 Lab File: VU027878.D
 Acq: 30 Oct 2018 17:52

Instrument : MSVOA_U
 ClientSampleId : MDL07

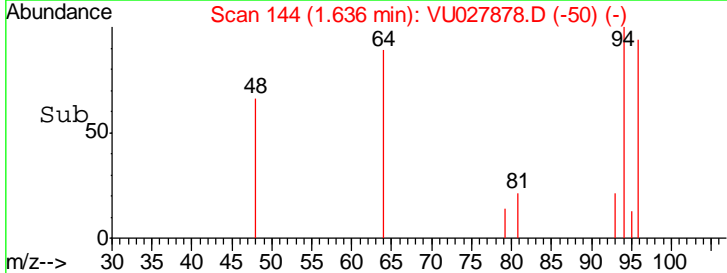
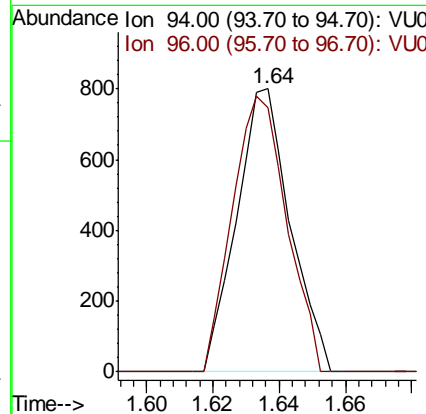
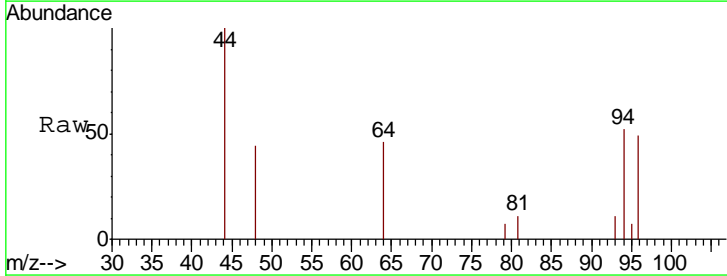
Tgt Ion	Resp	Lower	Upper
62	100		
64	50.0	24.0	44.6#

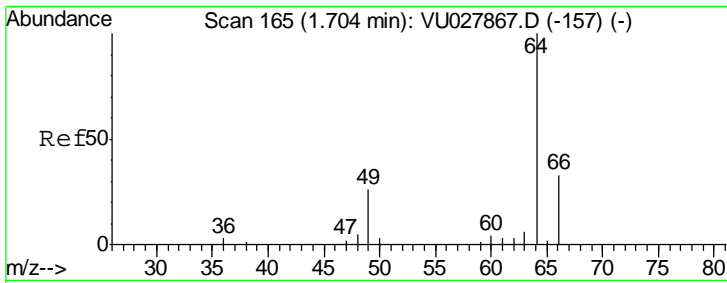
Manual Integrations
APPROVED
 MMDadoda
 11/1/2018 11:16:00 AM



#6
 Bromomethane
 Concen: 0.348 ug/L
 RT: 1.64 min Scan# 144
 Delta R.T. 0.00 min
 Lab File: VU027878.D
 Acq: 30 Oct 2018 17:52

Tgt Ion	Resp	Lower	Upper
94	100		
96	93.5	65.0	120.6





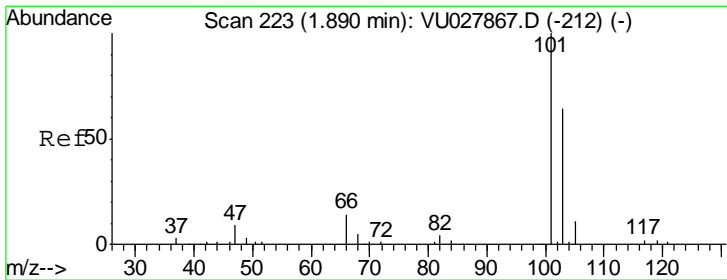
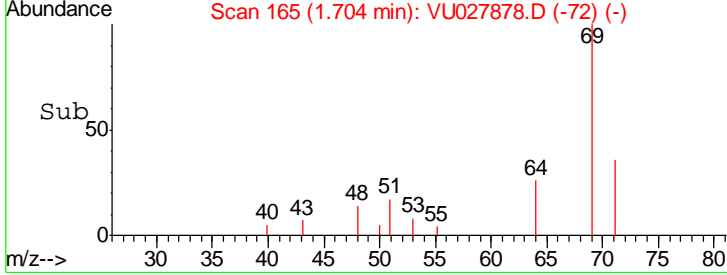
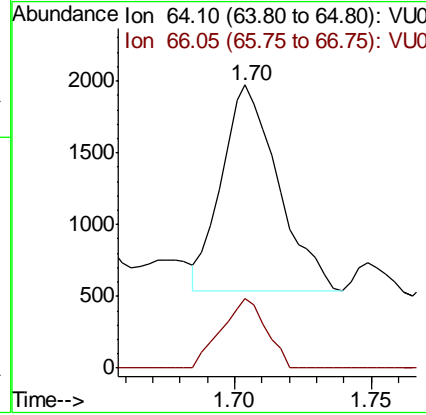
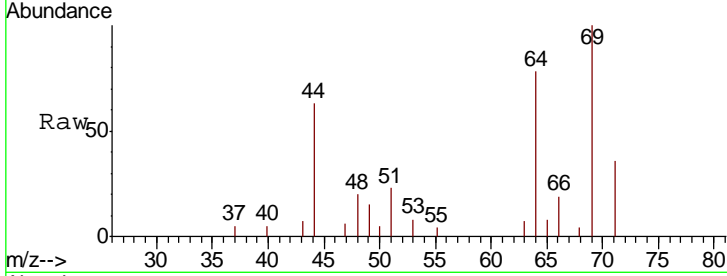
#8
 Chloroethane
 Concen: 0.447 ug/L
 RT: 1.70 min Scan# 165
 Delta R.T. -0.00 min
 Lab File: VU027878.D
 Acq: 30 Oct 2018 17:52

Instrument : MSVOA_U
 ClientSampled : MDL07

Tgt Ion	Resp	Lower	Upper
64	100		
66	24.7	21.8	40.6

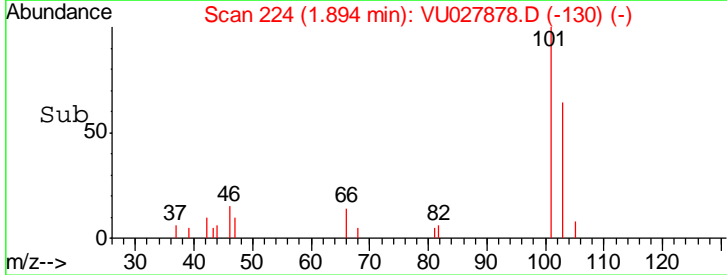
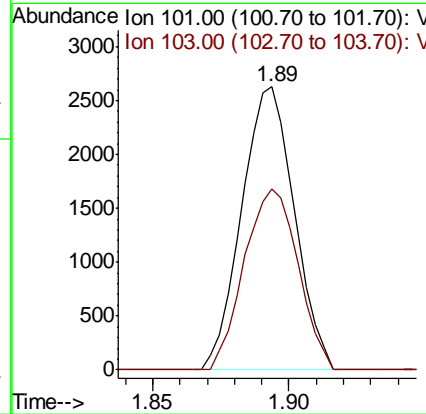
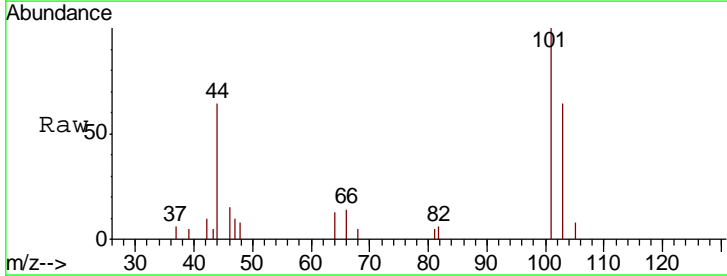
Manual Integrations
 APPROVED

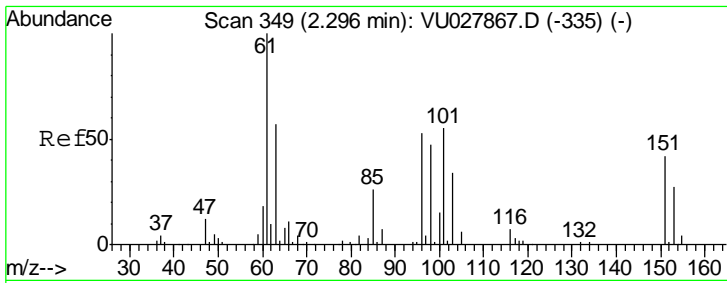
MMDadoda
 11/1/2018 11:16:00 AM



#9
 Trichlorofluoromethane
 Concen: 0.337 ug/L
 RT: 1.89 min Scan# 224
 Delta R.T. 0.00 min
 Lab File: VU027878.D
 Acq: 30 Oct 2018 17:52

Tgt Ion	Resp	Lower	Upper
101	100		
103	65.4	51.4	77.0





#10

1,1,2-Trichloro-1,2,2-trifluoroethane

Concen: 0.383 ug/L

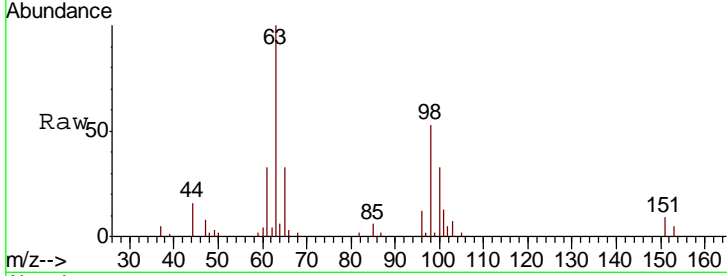
RT: 2.30 min Scan# 349

Delta R.T. -0.00 min

Lab File: VU027878.D

Acq: 30 Oct 2018 17:52

Instrument :
MSVOA_U
ClientSampled :
MDL07



Tgt Ion: 101 Resp: 2038

Ion Ratio Lower Upper

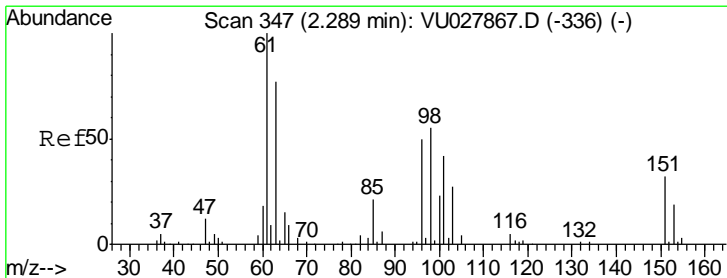
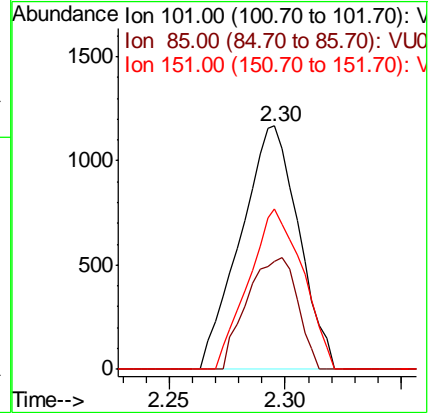
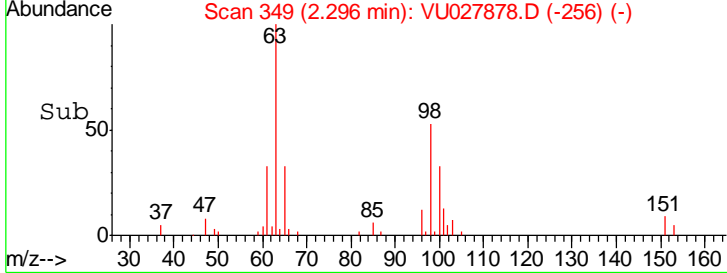
101 100

85 39.9 37.1 55.7

151 61.4 59.9 89.9

Manual Integrations
APPROVED

MMDadoda
11/1/2018 11:16:00 AM



#12

1,1-Dichloroethene

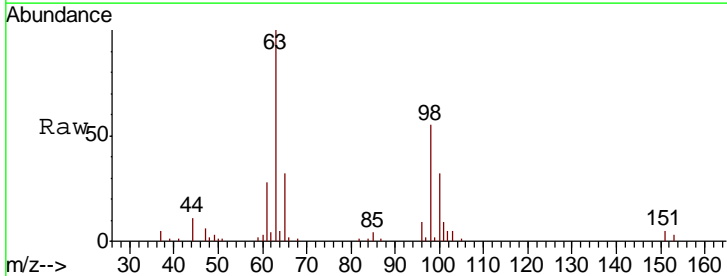
Concen: 0.376 ug/L

RT: 2.29 min Scan# 348

Delta R.T. 0.00 min

Lab File: VU027878.D

Acq: 30 Oct 2018 17:52



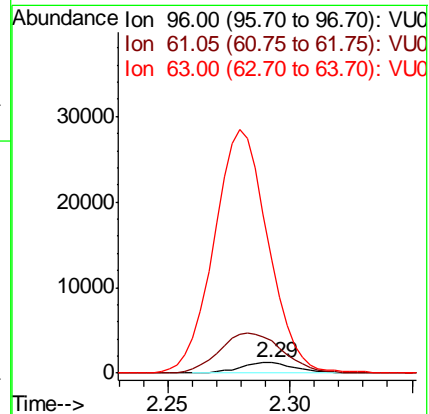
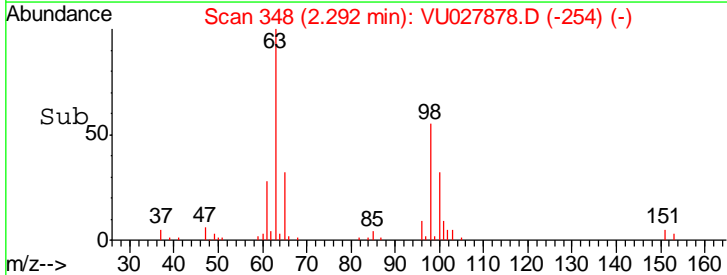
Tgt Ion: 96 Resp: 1886

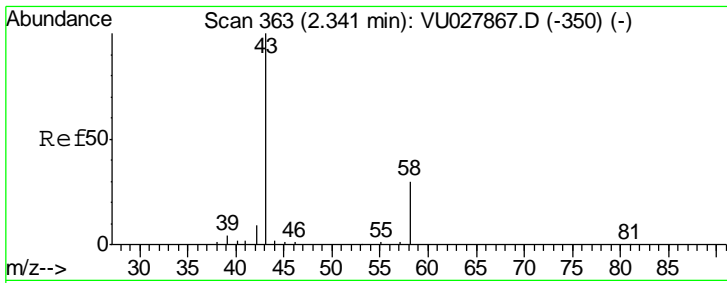
Ion Ratio Lower Upper

96 100

61 307.9 141.1 262.1#

63 1088.5 113.0 209.9#



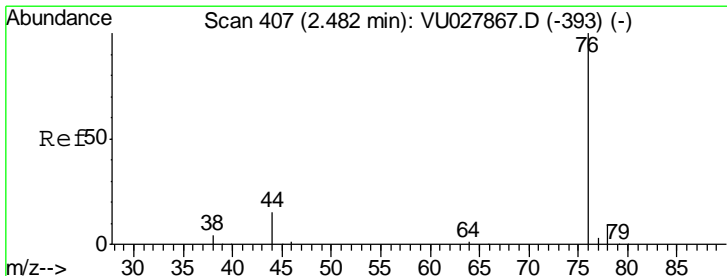
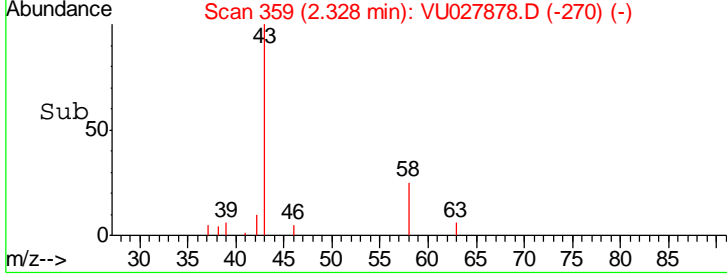
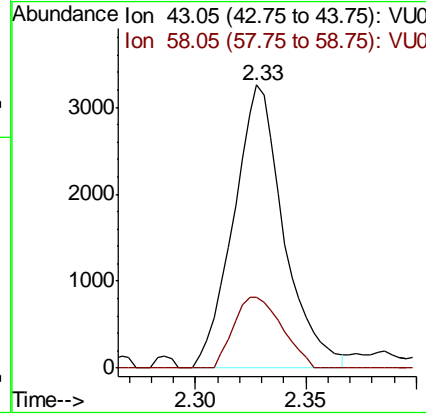
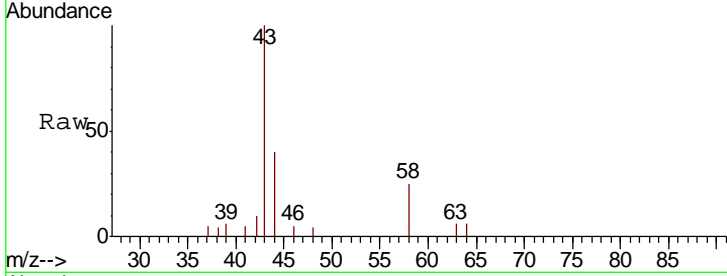


#13
 Acetone
 Concen: 4.351 ug/L
 RT: 2.33 min Scan# 359
 Delta R.T. -0.01 min
 Lab File: VU027878.D
 Acq: 30 Oct 2018 17:52

Instrument : MSVOA_U
 ClientSampled : MDL07

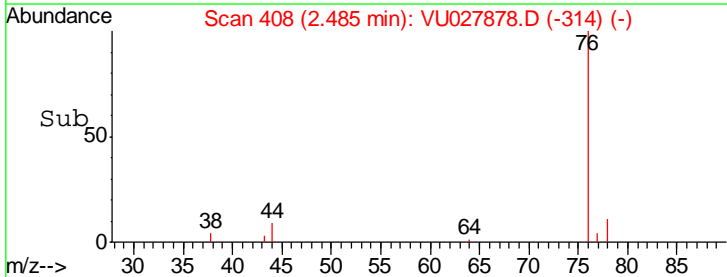
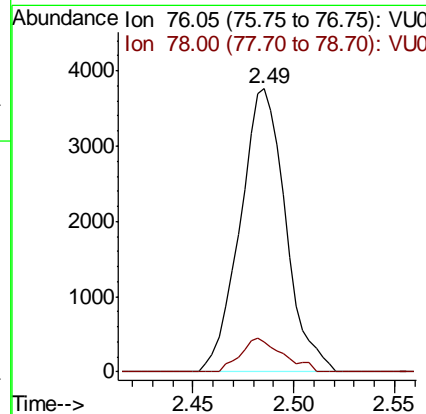
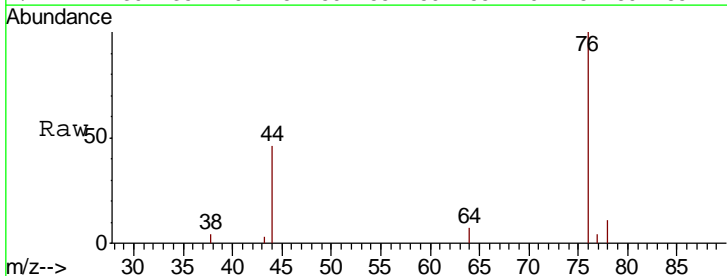
Tgt Ion	Ratio	Lower	Upper
43	100		
58	23.9	0.0	61.4

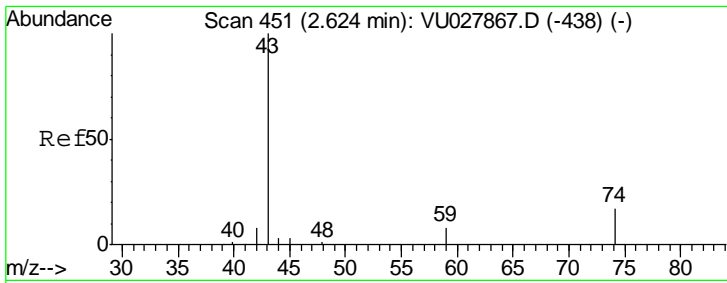
Manual Integrations
APPROVED
 MMDadoda
 11/1/2018 11:16:00 AM



#14
 Carbon disulfide
 Concen: 0.331 ug/L
 RT: 2.49 min Scan# 408
 Delta R.T. 0.00 min
 Lab File: VU027878.D
 Acq: 30 Oct 2018 17:52

Tgt Ion	Ratio	Lower	Upper
76	100		
78	10.8	7.5	11.3





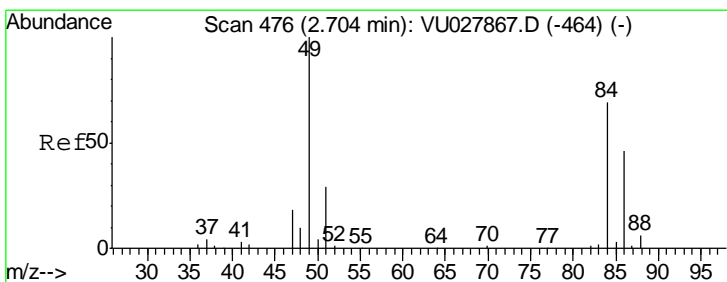
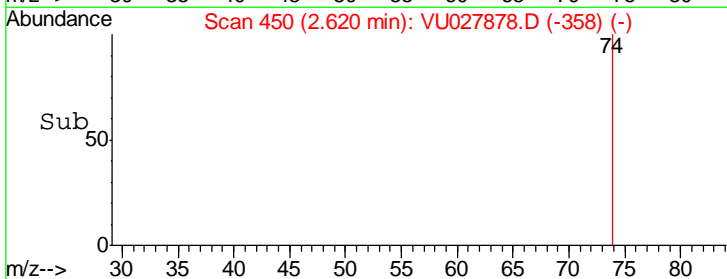
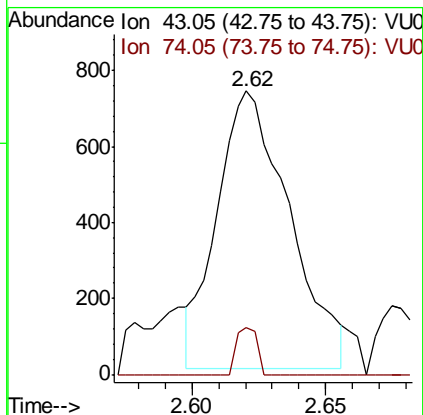
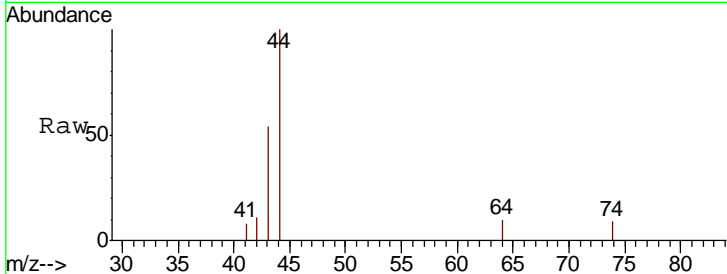
#15
Methyl Acetate
Concen: 0.434 ug/L m
RT: 2.62 min Scan# 450
Delta R.T. -0.00 min
Lab File: VU027878.D
Acq: 30 Oct 2018 17:52

Instrument :
MSVOA_U
ClientSampled :
MDL07

Tgt Ion	Resp	Lower	Upper
43	100		
74	4.9	14.9	22.3#

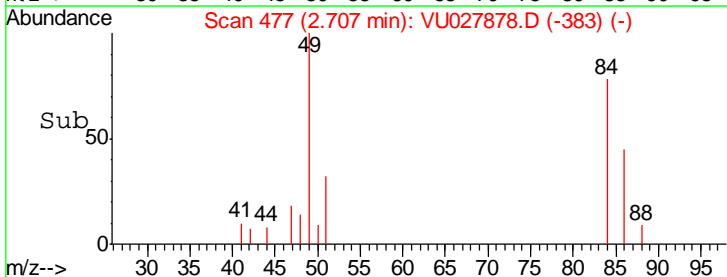
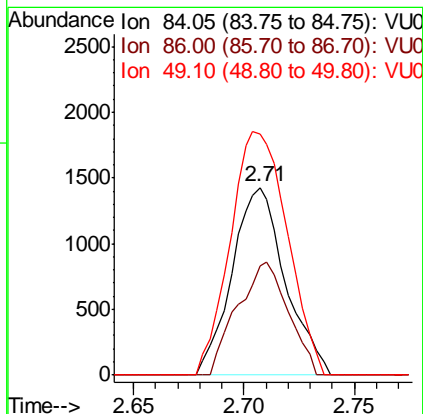
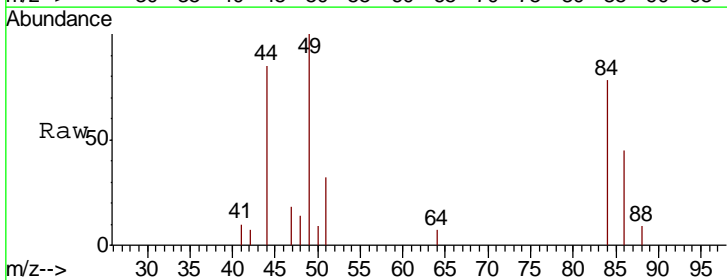
Manual Integrations
APPROVED

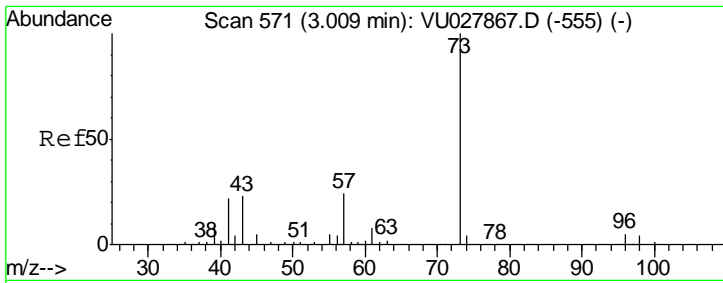
MMDadoda
11/1/2018 11:16:00 AM



#16
Methylene chloride
Concen: 0.424 ug/L
RT: 2.71 min Scan# 477
Delta R.T. 0.00 min
Lab File: VU027878.D
Acq: 30 Oct 2018 17:52

Tgt Ion	Resp	Lower	Upper
84	100		
86	58.1	46.7	86.7
49	128.5	101.3	188.1





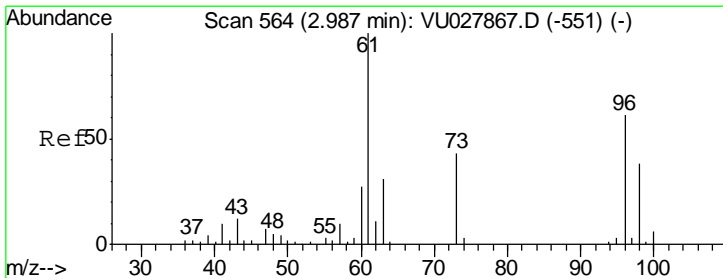
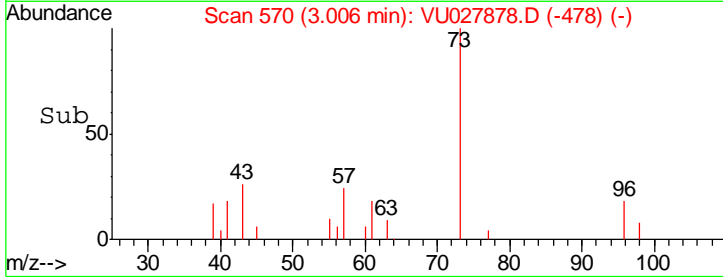
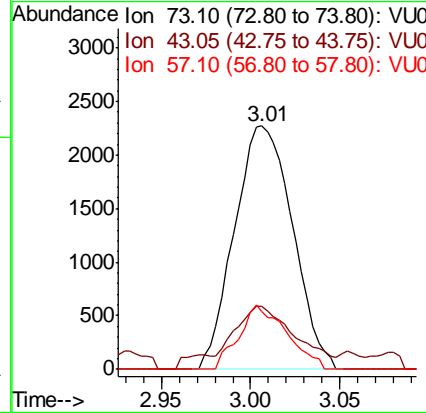
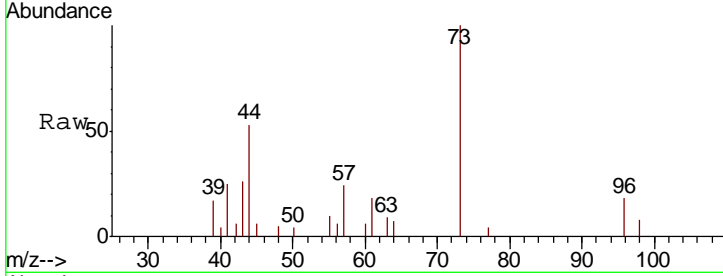
#17
 Methyl tert-butyl Ether
 Concen: 0.345 ug/L
 RT: 3.01 min Scan# 570
 Delta R.T. -0.00 min
 Lab File: VU027878.D
 Acq: 30 Oct 2018 17:52

Instrument : MSVOA_U
 ClientSampled : VU027878.D
 MDL07

Tgt Ion	Resp	Lower	Upper
73	5164		
43	27.7	18.7	28.1
57	21.8	18.7	28.1

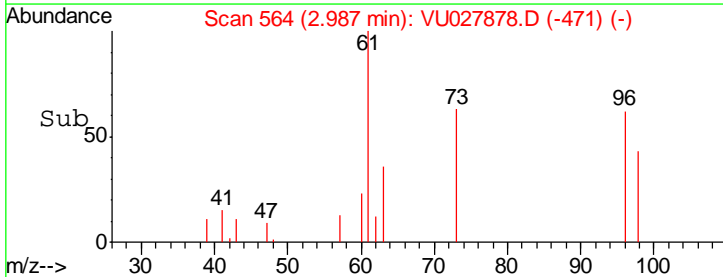
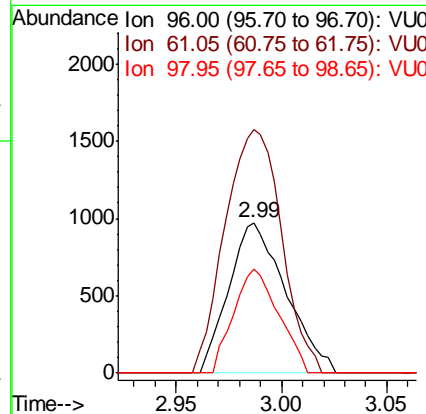
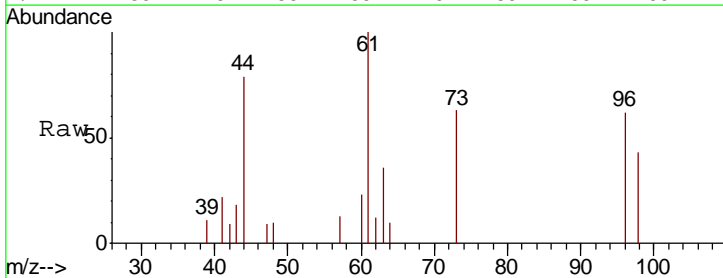
Manual Integrations
 APPROVED

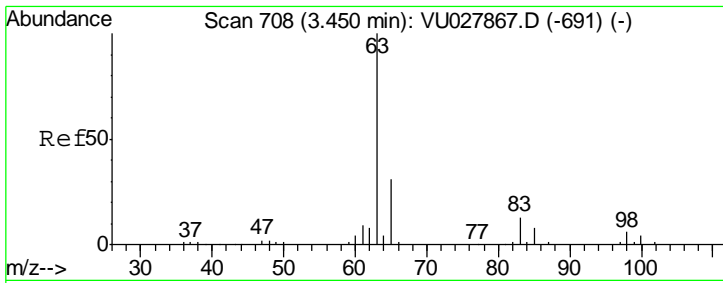
MMDadoda
 11/1/2018 11:16:00 AM



#18
 trans-1,2-Dichloroethene
 Concen: 0.343 ug/L
 RT: 2.99 min Scan# 564
 Delta R.T. -0.00 min
 Lab File: VU027878.D
 Acq: 30 Oct 2018 17:52

Tgt Ion	Resp	Lower	Upper
96	1828		
61	161.4	115.2	214.0
98	69.3	44.0	81.8





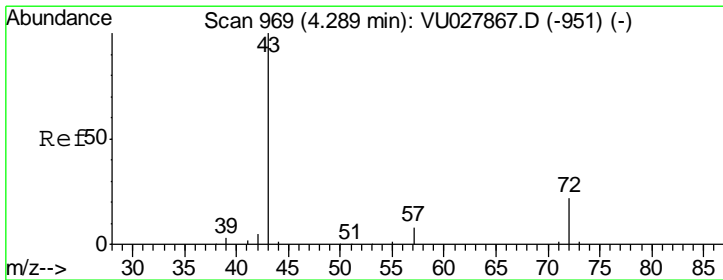
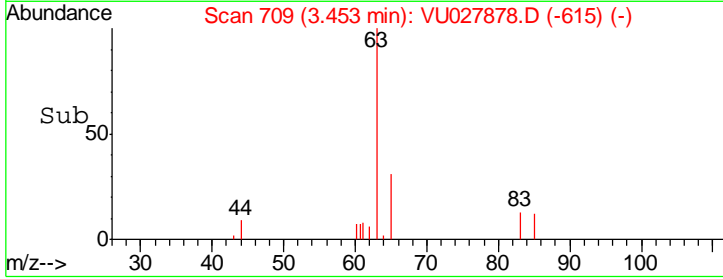
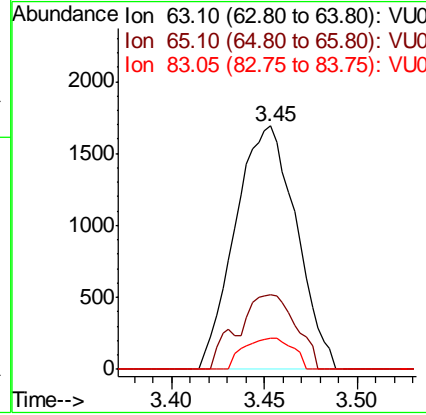
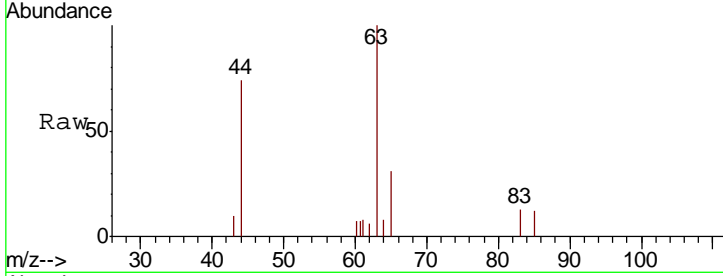
#19
 1,1-Dichloroethane
 Concen: 0.342 ug/L
 RT: 3.45 min Scan# 709
 Delta R.T. 0.00 min
 Lab File: VU027878.D
 Acq: 30 Oct 2018 17:52

Instrument : MSVOA_U
 ClientSampled : MDL07

Tgt Ion	Resp	Lower	Upper
63	100		
65	30.6	21.8	40.4
83	12.6	9.4	17.4

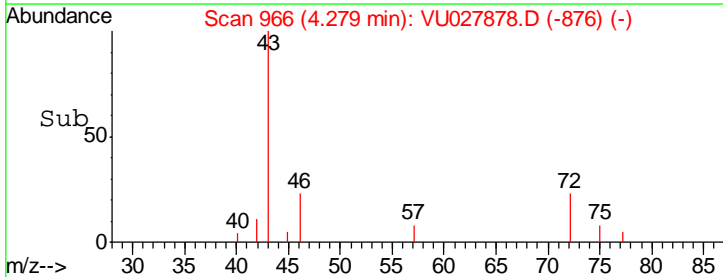
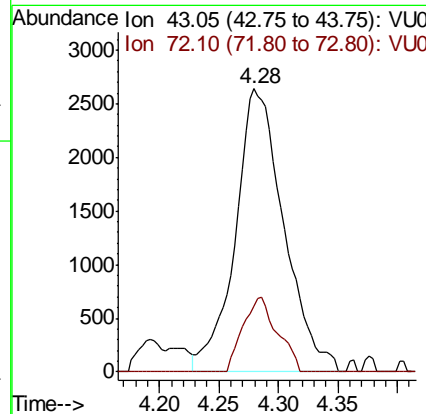
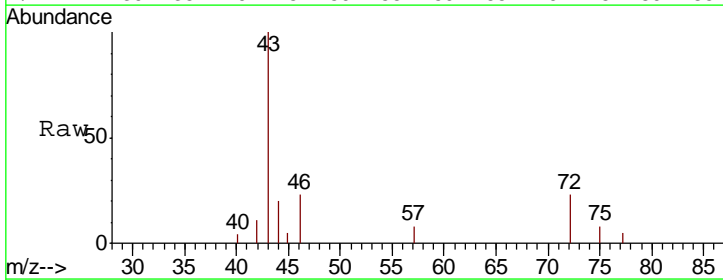
Manual Integrations
 APPROVED

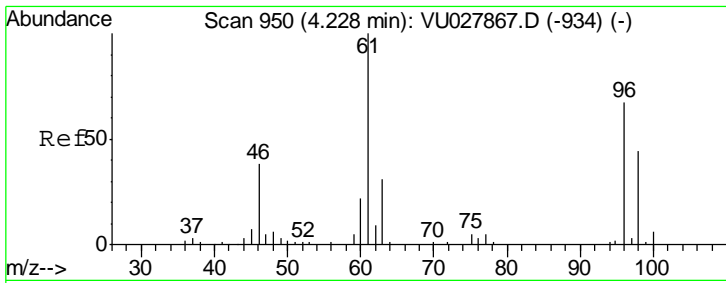
MMDadoda
 11/1/2018 11:16:00 AM



#21
 2-Butanone
 Concen: 3.623 ug/L
 RT: 4.28 min Scan# 966
 Delta R.T. -0.01 min
 Lab File: VU027878.D
 Acq: 30 Oct 2018 17:52

Tgt Ion	Resp	Lower	Upper
43	100		
72	18.6	10.9	32.9





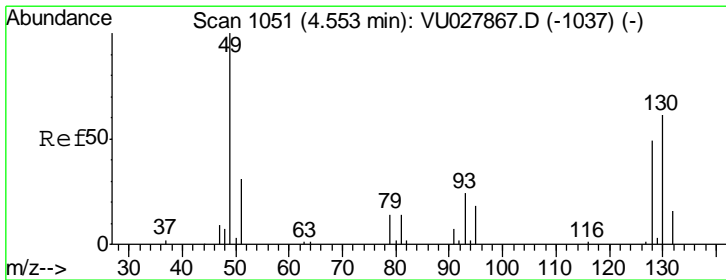
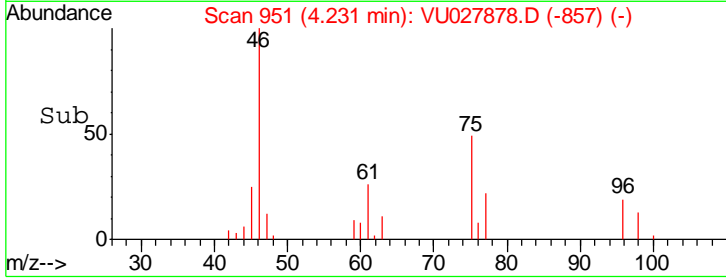
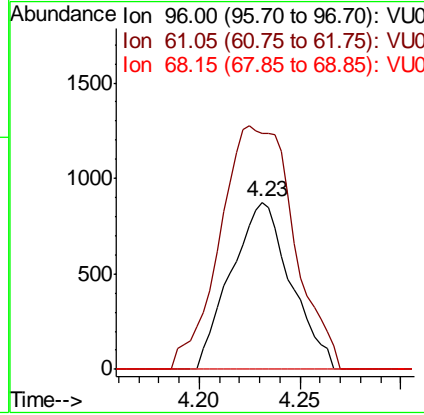
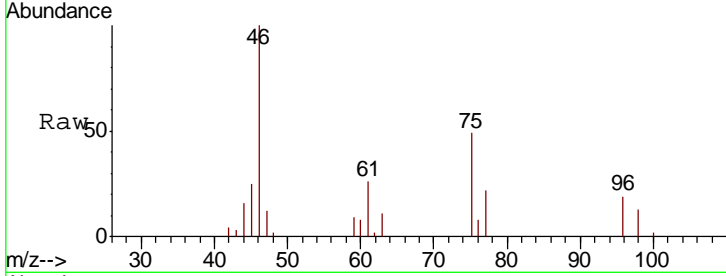
#22
 cis-1,2-Dichloroethene
 Concen: 0.293 ug/L
 RT: 4.23 min Scan# 951
 Delta R.T. 0.00 min
 Lab File: VU027878.D
 Acq: 30 Oct 2018 17:52

Instrument : MSVOA_U
 ClientSampled : VU027878.D
 MDL07

Tgt Ion	Resp	Lower	Upper
96	1803		
96	100		
61	141.5	104.0	193.2
68	0.0	0.0	0.0

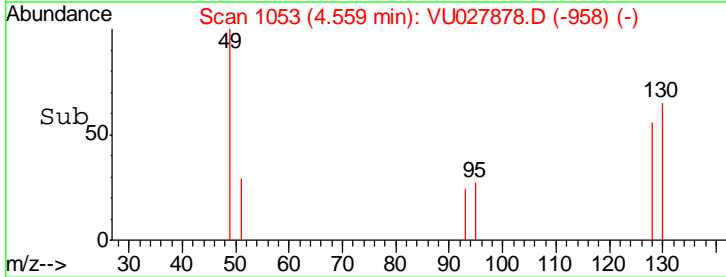
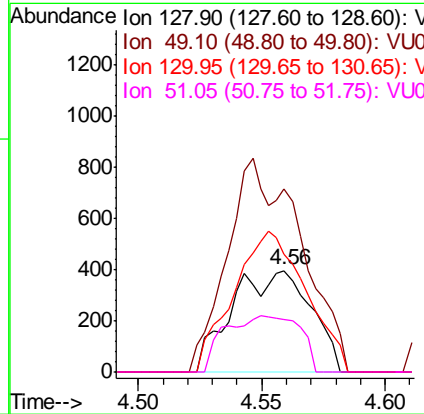
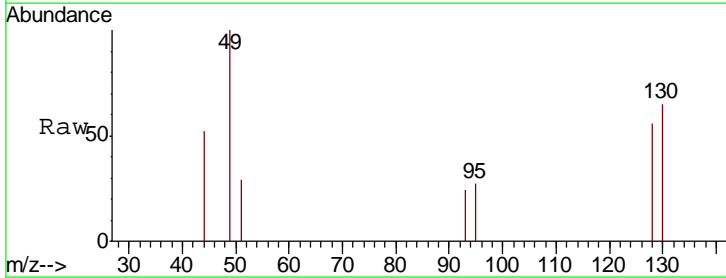
Manual Integrations
 APPROVED

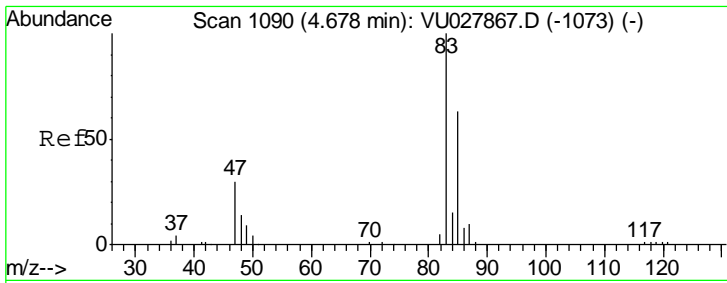
MMDadoda
 11/1/2018 11:16:00 AM



#23
 Bromochloromethane
 Concen: 0.344 ug/L m
 RT: 4.56 min Scan# 1053
 Delta R.T. 0.01 min
 Lab File: VU027878.D
 Acq: 30 Oct 2018 17:52

Tgt Ion	Resp	Lower	Upper
128	879		
128	100		
49	179.8	142.0	263.8
130	116.6	86.1	159.9
51	51.9	50.4	75.6



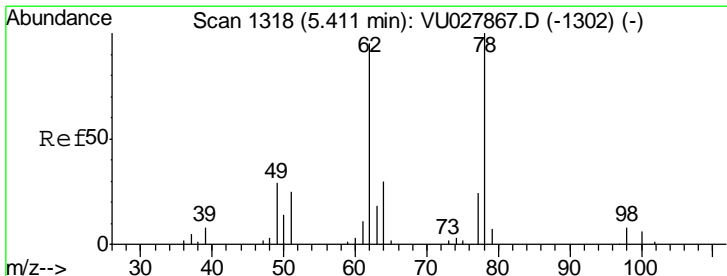
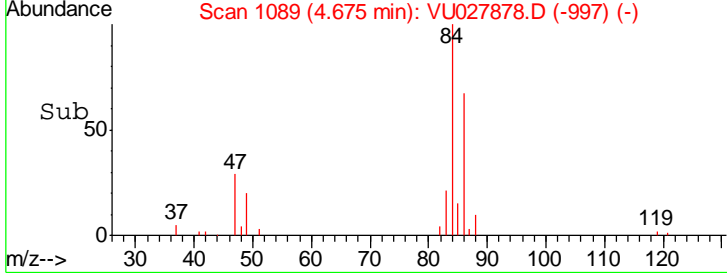
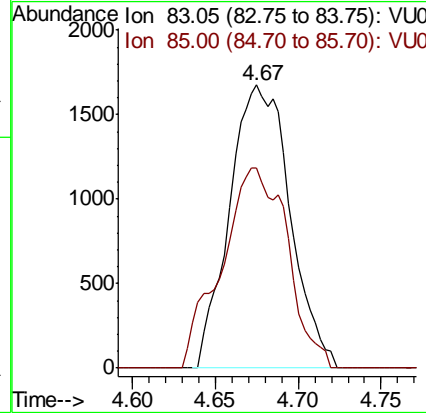
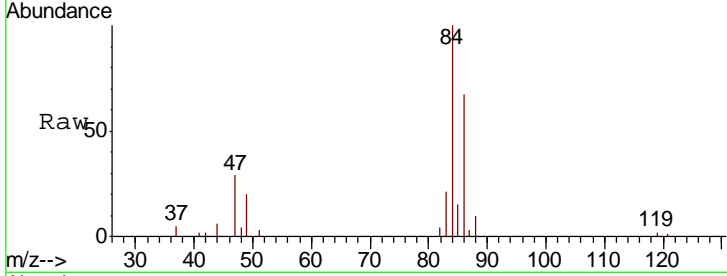


#25
 Chloroform
 Concen: 0.373 ug/L
 RT: 4.67 min Scan# 1089
 Delta R.T. -0.00 min
 Lab File: VU027878.D
 Acq: 30 Oct 2018 17:52

Instrument : MSVOA_U
 ClientSampled : MDL07

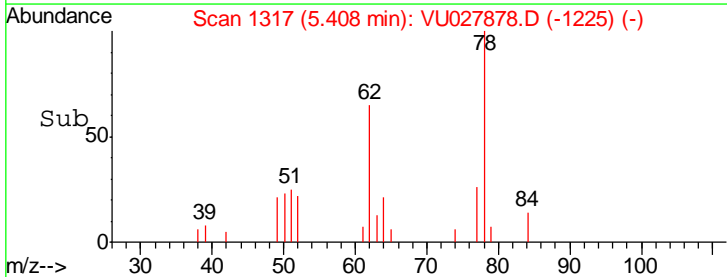
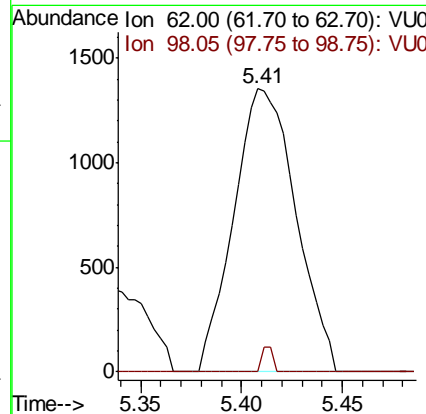
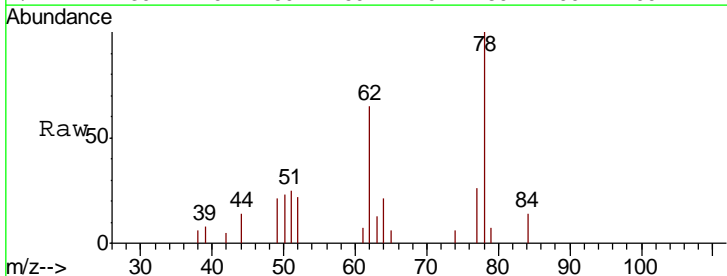
Tgt Ion	Resp	Lower	Upper
83	100		
85	70.7	44.0	81.8

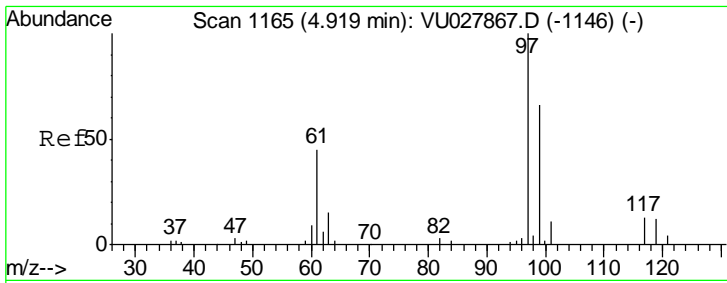
Manual Integrations
APPROVED
 MMDadoda
 11/1/2018 11:16:00 AM



#27
 1,2-Dichloroethane
 Concen: 0.365 ug/L
 RT: 5.41 min Scan# 1317
 Delta R.T. -0.00 min
 Lab File: VU027878.D
 Acq: 30 Oct 2018 17:52

Tgt Ion	Resp	Lower	Upper
62	100		
98	0.0	6.3	9.5#





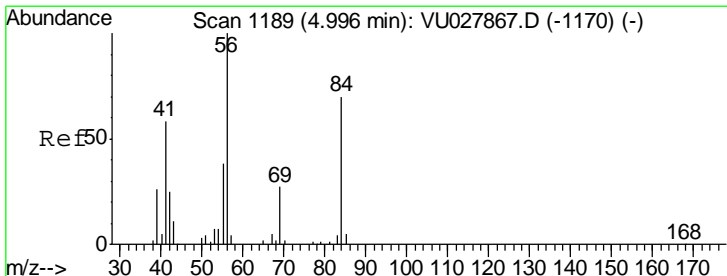
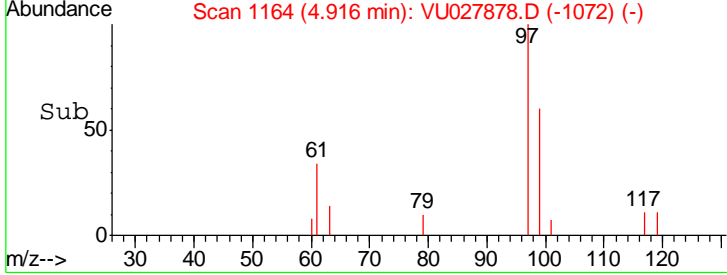
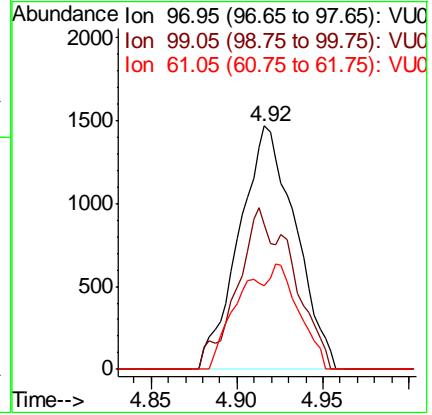
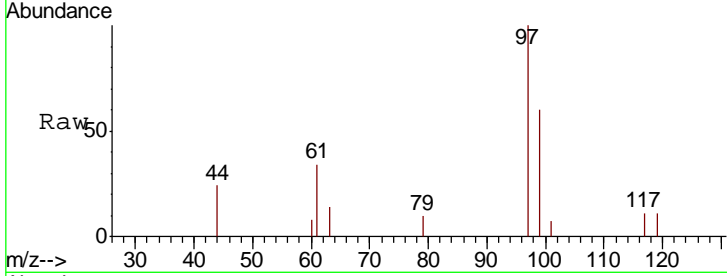
#29
 1,1,1-Trichloroethane
 Concen: 0.328 ug/L
 RT: 4.92 min Scan# 1164
 Delta R.T. -0.00 min
 Lab File: VU027878.D
 Acq: 30 Oct 2018 17:52

Instrument : MSVOA_U
 ClientSampled : MDL07

Tgt Ion	Resp	Lower	Upper
97	3335		
99	42.7	50.6	76.0#
61	22.6	35.8	53.6#

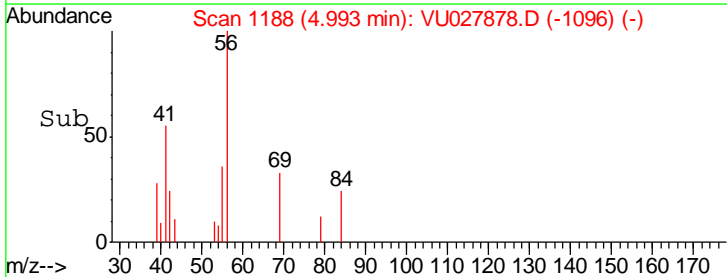
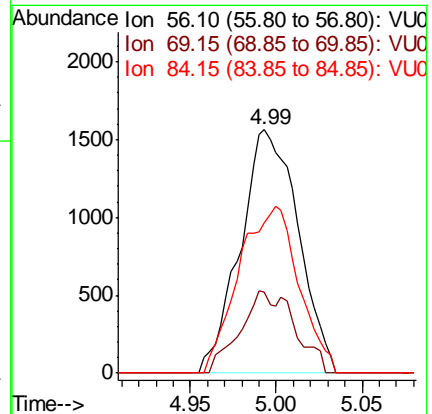
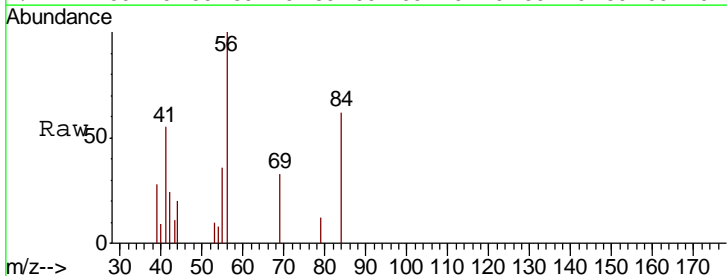
Manual Integrations
 APPROVED

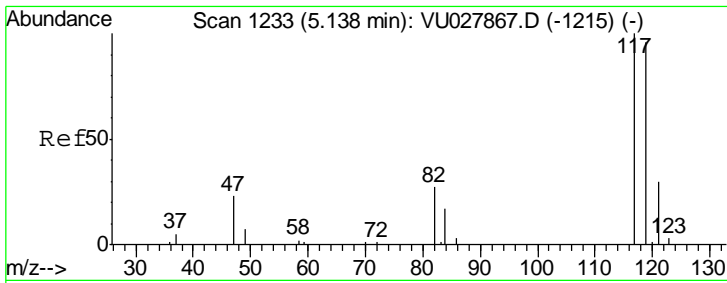
MMDadoda
 11/1/2018 11:16:00 AM



#30
 Cyclohexane
 Concen: 0.306 ug/L
 RT: 4.99 min Scan# 1188
 Delta R.T. -0.00 min
 Lab File: VU027878.D
 Acq: 30 Oct 2018 17:52

Tgt Ion	Resp	Lower	Upper
56	3657		
69	20.2	22.7	34.1#
84	70.9	58.1	87.1





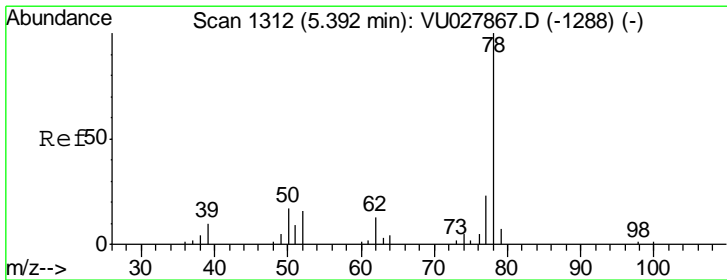
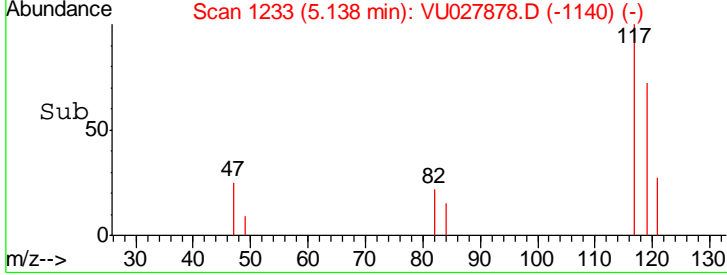
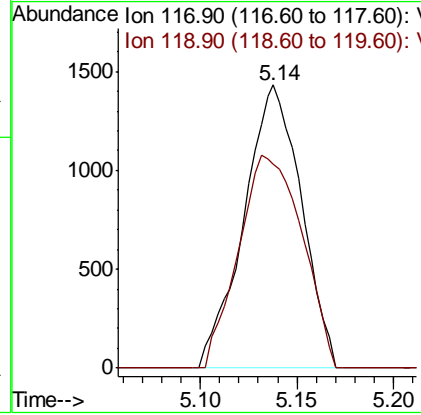
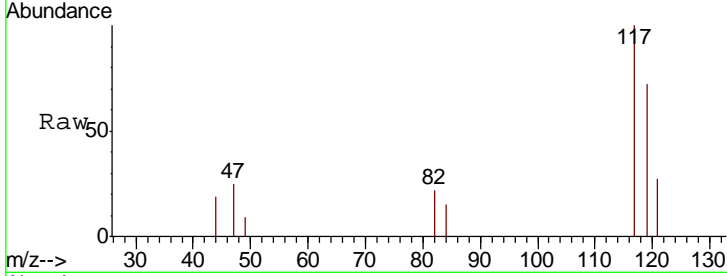
#31
 Carbon tetrachloride
 Concen: 0.339 ug/L
 RT: 5.14 min Scan# 1233
 Delta R.T. -0.00 min
 Lab File: VU027878.D
 Acq: 30 Oct 2018 17:52

Instrument : MSVOA_U
 ClientSampled : MDL07

Tgt Ion: 117 Resp: 2953

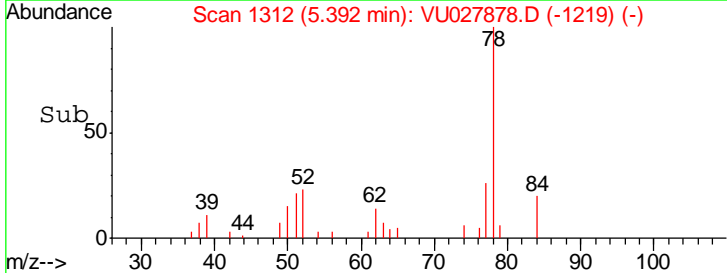
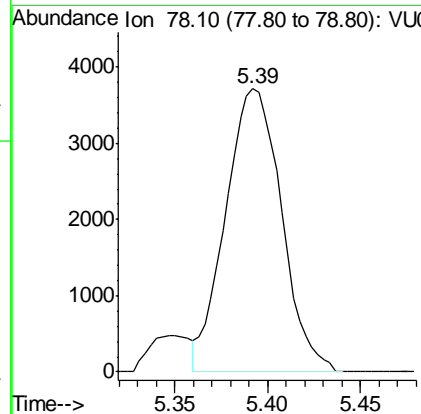
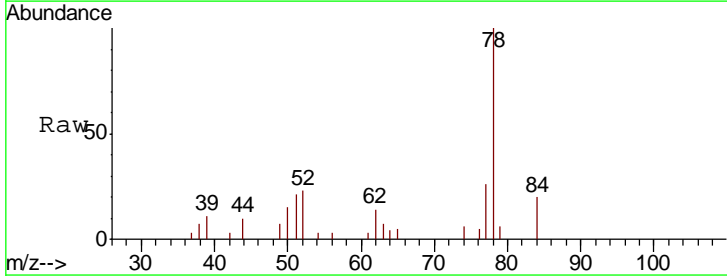
Ion	Ratio	Lower	Upper
117	100		
119	83.2	77.1	115.7

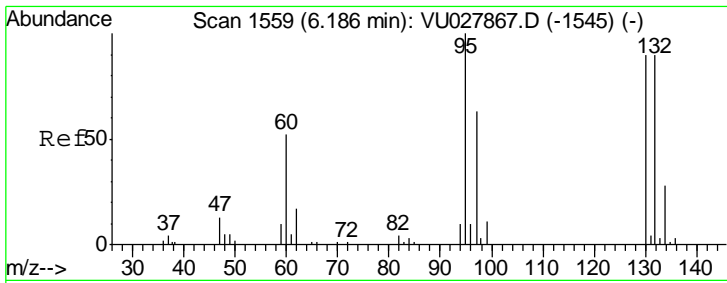
Manual Integrations
APPROVED
 MMDadoda
 11/1/2018 11:16:00 AM



#33
 Benzene
 Concen: 0.313 ug/L
 RT: 5.39 min Scan# 1312
 Delta R.T. -0.00 min
 Lab File: VU027878.D
 Acq: 30 Oct 2018 17:52

Tgt Ion: 78 Resp: 7794





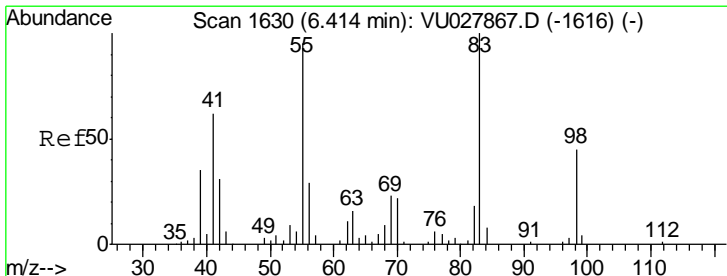
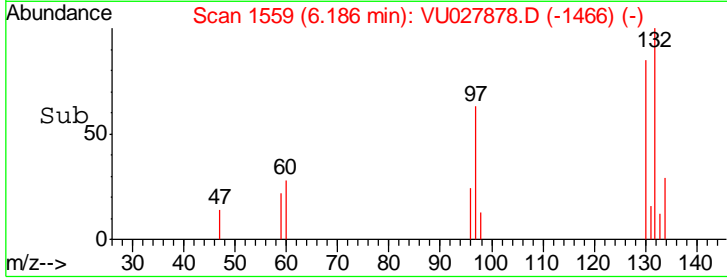
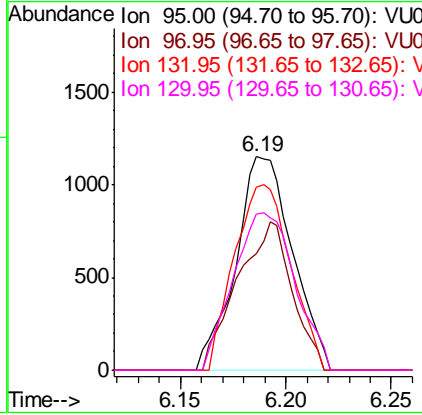
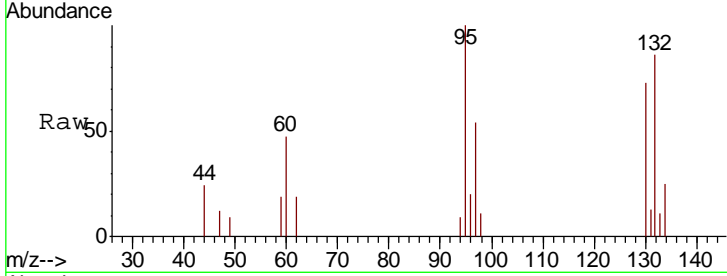
#34
 Trichloroethene
 Concen: 0.331 ug/L
 RT: 6.19 min Scan# 1559
 Delta R.T. -0.00 min
 Lab File: VU027878.D
 Acq: 30 Oct 2018 17:52

Instrument : MSVOA_U
 ClientSampled : MDL07

Tgt Ion	Resp	Lower	Upper
95	100		
97	54.3	44.0	81.6
132	85.6	63.3	117.5
130	73.0	63.1	117.3

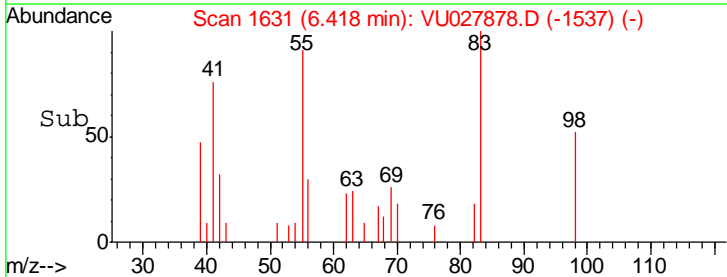
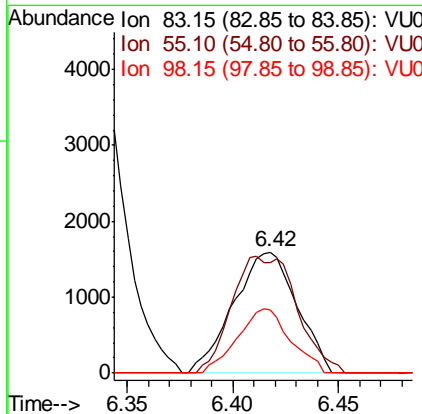
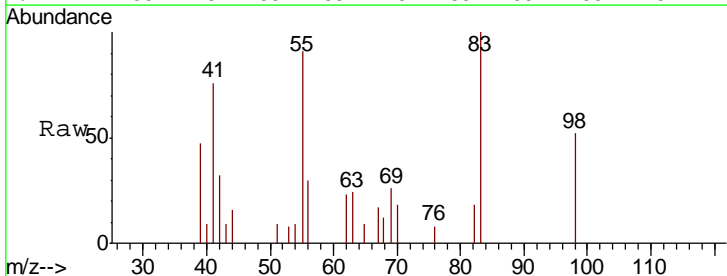
Manual Integrations
 APPROVED

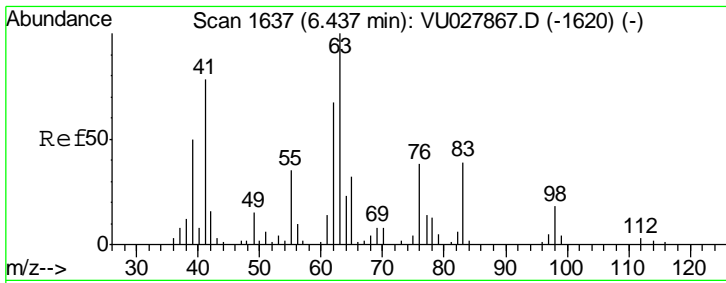
MMDadoda
 11/1/2018 11:16:00 AM



#35
 Methylcyclohexane
 Concen: 0.301 ug/L
 RT: 6.42 min Scan# 1631
 Delta R.T. 0.00 min
 Lab File: VU027878.D
 Acq: 30 Oct 2018 17:52

Tgt Ion	Resp	Lower	Upper
83	100		
55	99.2	73.4	110.0
98	44.3	35.3	52.9





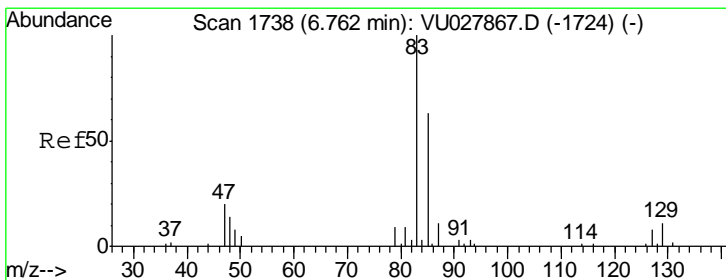
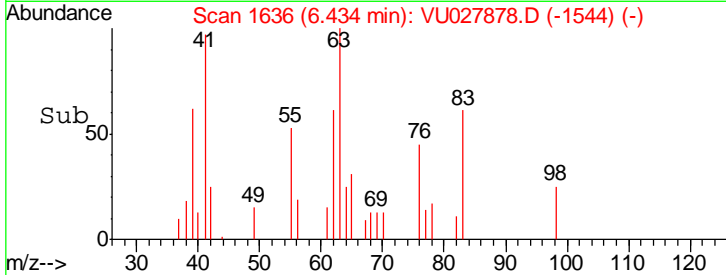
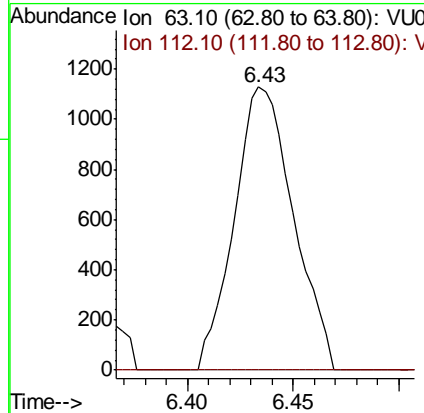
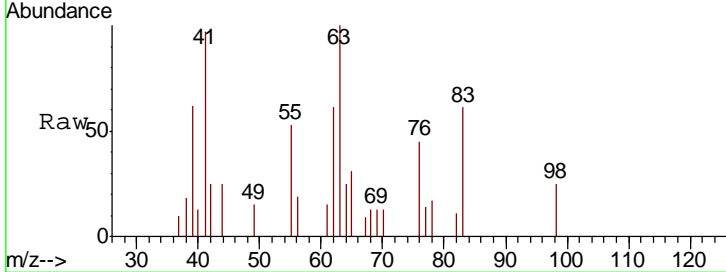
#37
 1,2-Dichloropropane
 Concen: 0.309 ug/L
 RT: 6.43 min Scan# 1636
 Delta R.T. -0.00 min
 Lab File: VU027878.D
 Acq: 30 Oct 2018 17:52

Instrument : MSVOA_U
 ClientSampled : MDL07

Tgt Ion	Resp	Lower	Upper
63	100		
112	0.0	2.6	3.8#

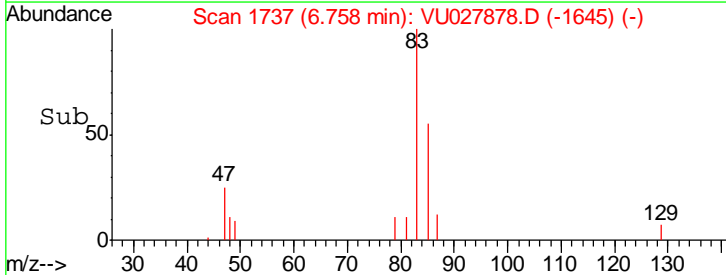
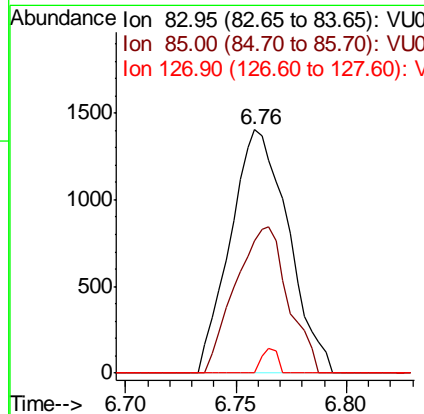
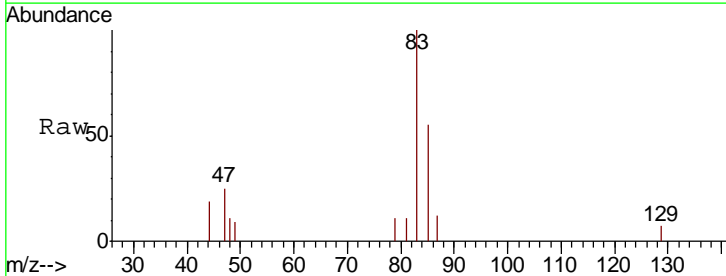
Manual Integrations
 APPROVED

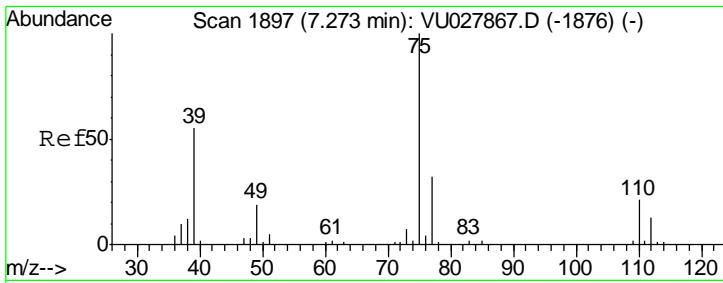
MMDadoda
 11/1/2018 11:16:00 AM



#38
 Bromodichloromethane
 Concen: 0.307 ug/L
 RT: 6.76 min Scan# 1737
 Delta R.T. -0.00 min
 Lab File: VU027878.D
 Acq: 30 Oct 2018 17:52

Tgt Ion	Resp	Lower	Upper
83	100		
85	54.6	43.8	81.4
127	0.0	6.4	9.6#





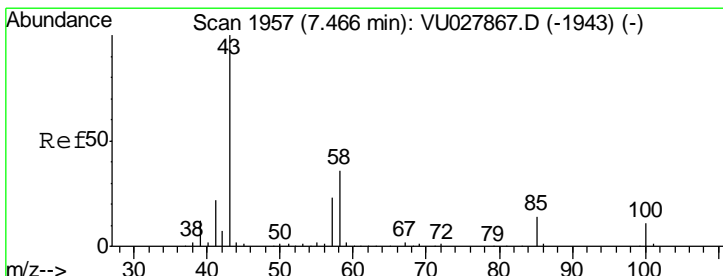
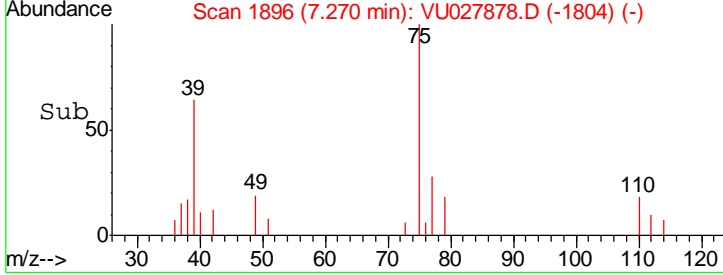
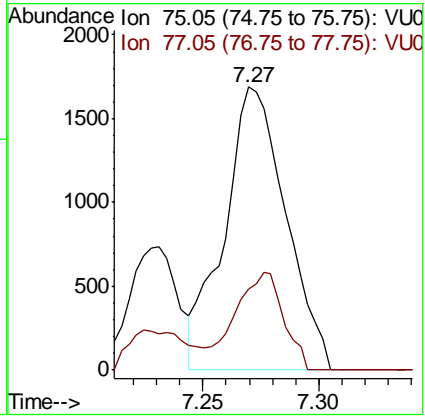
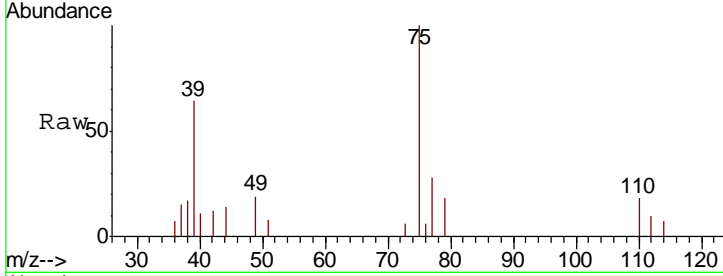
#39
 cis-1,3-Dichloropropene
 Concen: 0.305 ug/L
 RT: 7.27 min Scan# 1896
 Delta R.T. -0.00 min
 Lab File: VU027878.D
 Acq: 30 Oct 2018 17:52

Instrument :
 MSVOA_U
ClientSampled :
 MDL07

Tgt Ion: 75 Resp: 3108

Ion	Ratio	Lower	Upper
75	100		
77	28.4	22.2	41.2

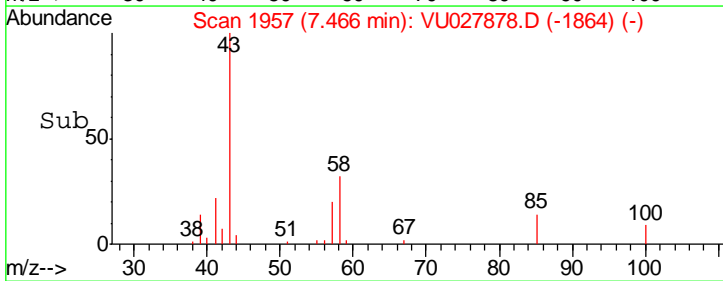
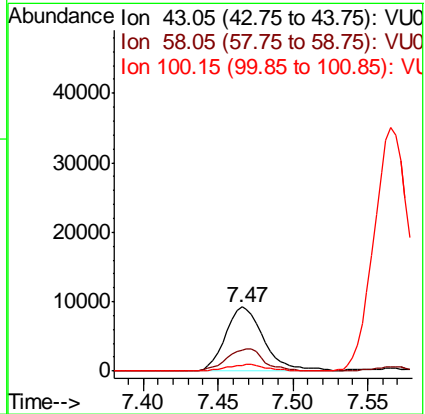
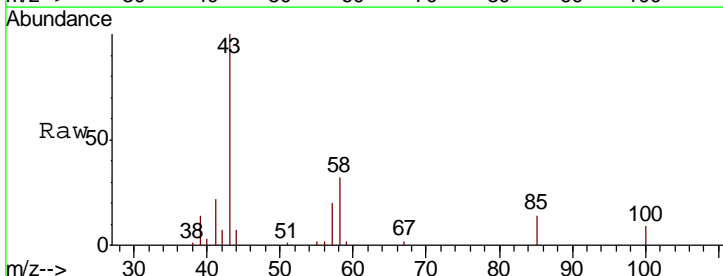
Manual Integrations
APPROVED
 MMDadoda
 11/1/2018 11:16:00 AM

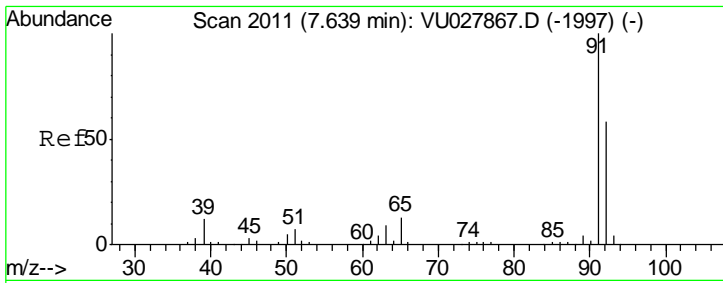


#40
 4-Methyl-2-pentanone
 Concen: 3.304 ug/L
 RT: 7.47 min Scan# 1957
 Delta R.T. -0.00 min
 Lab File: VU027878.D
 Acq: 30 Oct 2018 17:52

Tgt Ion: 43 Resp: 16572

Ion	Ratio	Lower	Upper
43	100		
58	33.8	28.5	42.7
100	0.0	8.8	13.2#



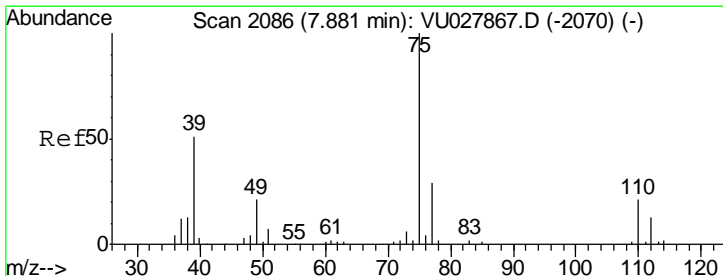
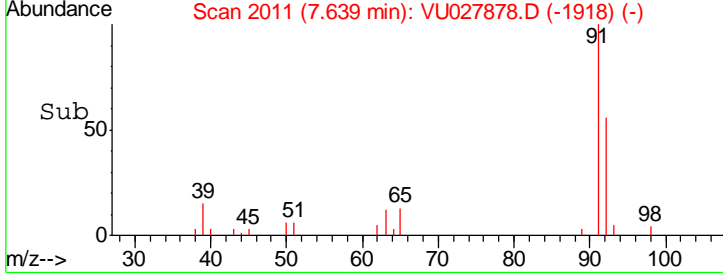
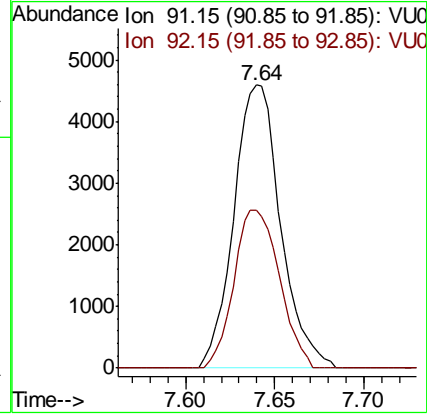
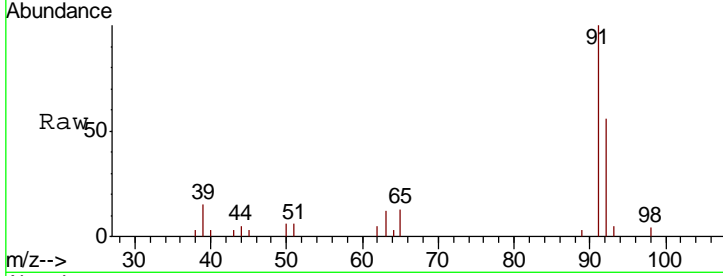


#42
 Toluene
 Concen: 0.322 ug/L
 RT: 7.64 min Scan# 2011
 Delta R.T. -0.00 min
 Lab File: VU027878.D
 Acq: 30 Oct 2018 17:52

Instrument : MSVOA_U
 ClientSampled : MDL07

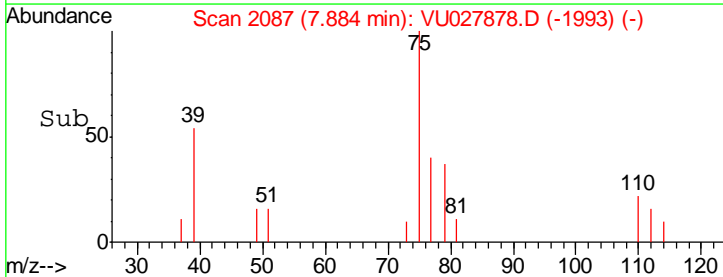
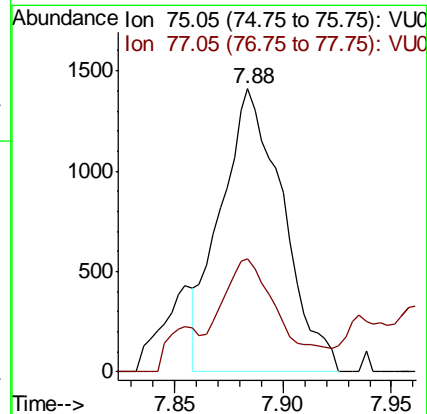
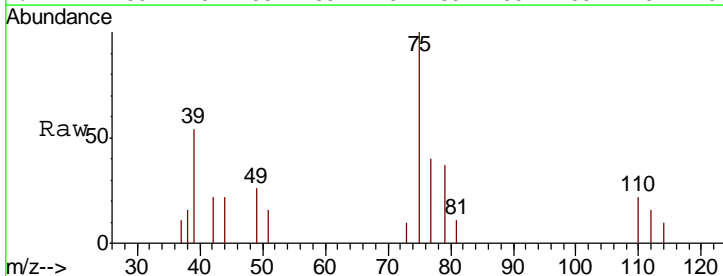
Tgt Ion	Resp	Lower	Upper
91	100		
92	55.9	40.3	74.9

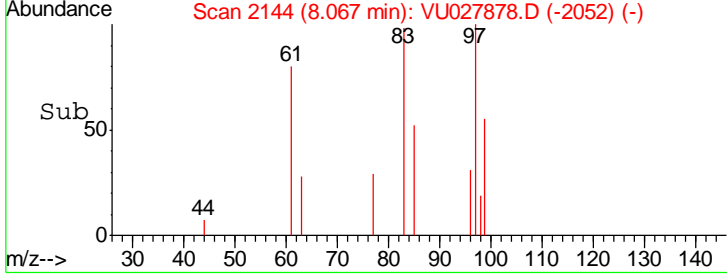
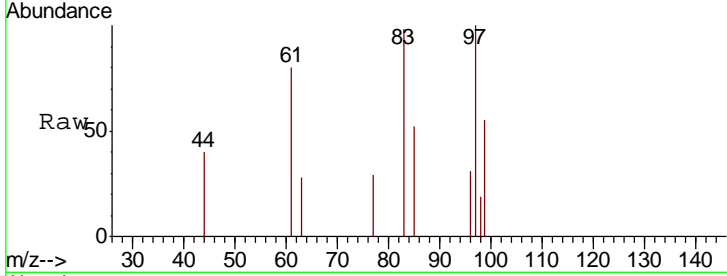
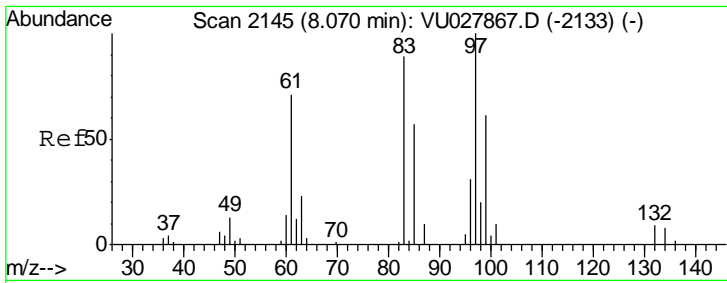
Manual Integrations
APPROVED
 MMDadoda
 11/1/2018 11:16:00 AM



#44
 trans-1,3-Dichloropropene
 Concen: 0.324 ug/L
 RT: 7.88 min Scan# 2087
 Delta R.T. 0.00 min
 Lab File: VU027878.D
 Acq: 30 Oct 2018 17:52

Tgt Ion	Resp	Lower	Upper
75	100		
77	40.0	20.5	38.1#



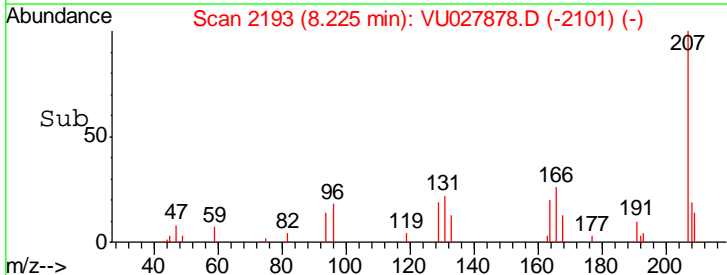
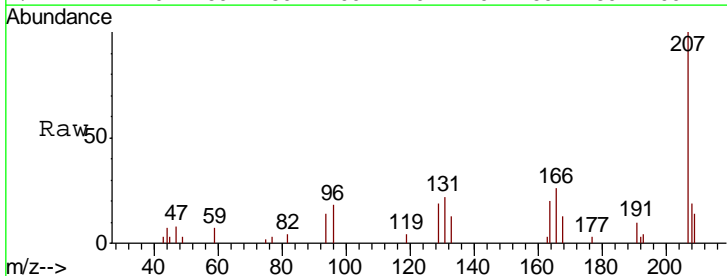
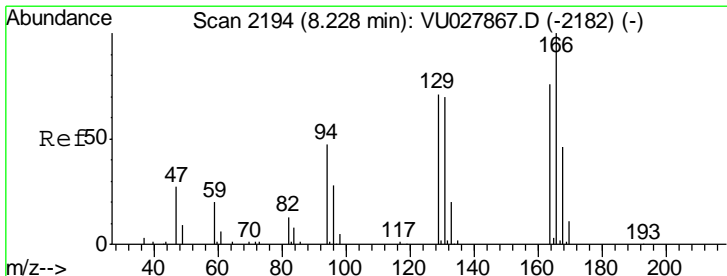
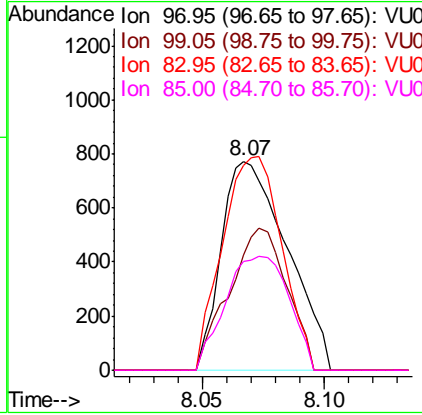


#45
 1,1,2-Trichloroethane
 Concen: 0.332 ug/L
 RT: 8.07 min Scan# 2144
 Delta R.T. -0.00 min
 Lab File: VU027878.D
 Acq: 30 Oct 2018 17:52

Tgt Ion	Resp	Lower	Upper
97	100		
99	55.4	42.9	79.7
83	98.2	62.2	115.6
85	51.8	40.2	74.6

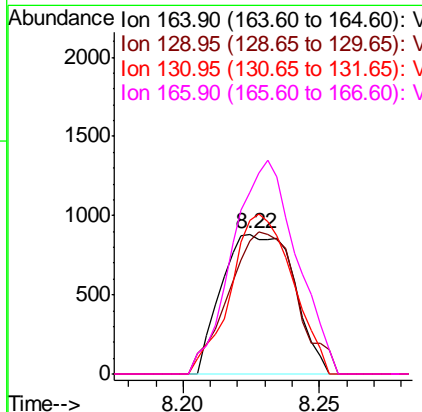
Instrument : MSVOA_U
 ClientSampled : MDL07

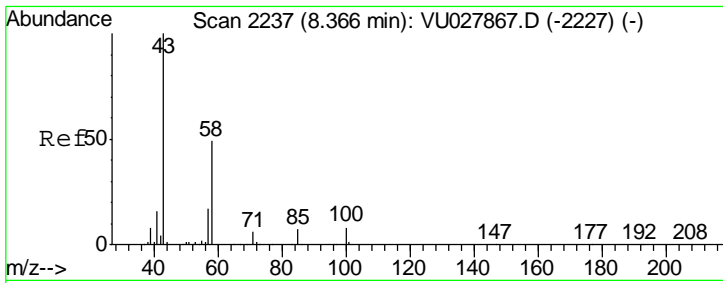
Manual Integrations APPROVED
 MMDadoda
 11/1/2018 11:16:00 AM



#47
 Tetrachloroethene
 Concen: 0.326 ug/L
 RT: 8.22 min Scan# 2193
 Delta R.T. -0.00 min
 Lab File: VU027878.D
 Acq: 30 Oct 2018 17:52

Tgt Ion	Resp	Lower	Upper
164	100		
129	95.6	64.9	120.5
131	109.9	64.3	119.5
166	130.1	91.8	170.4



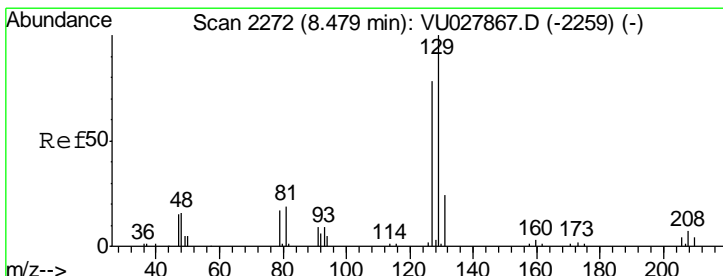
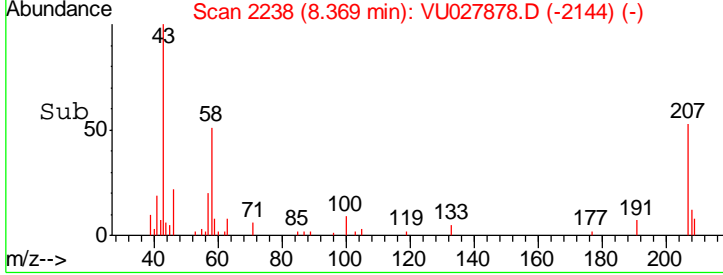
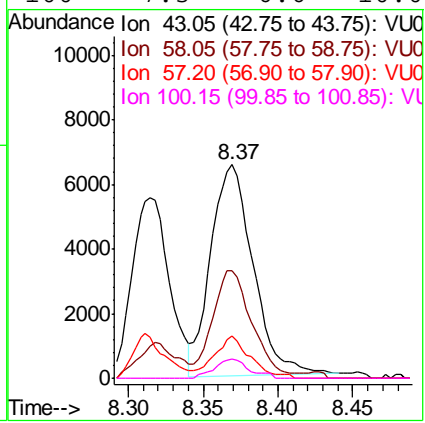
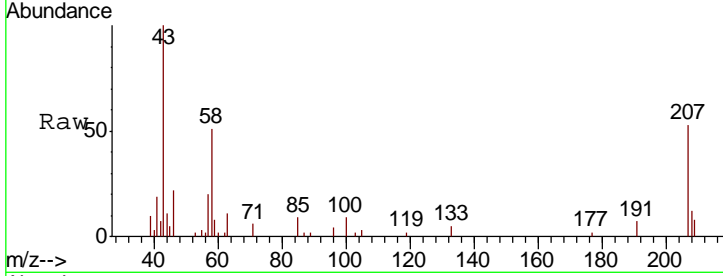


#48
 2-Hexanone
 Concen: 3.554 ug/L
 RT: 8.37 min Scan# 2238
 Delta R.T. 0.00 min
 Lab File: VU027878.D
 Acq: 30 Oct 2018 17:52

Instrument : MSVOA_U
 ClientSampled : VU027878.D
 MDL07

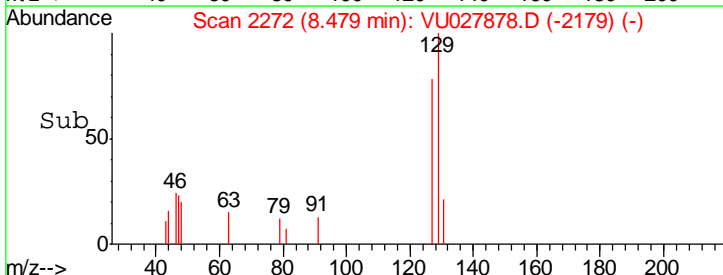
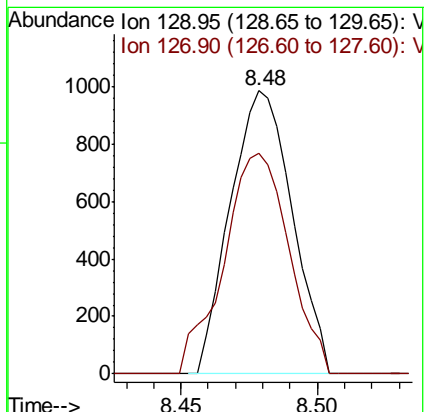
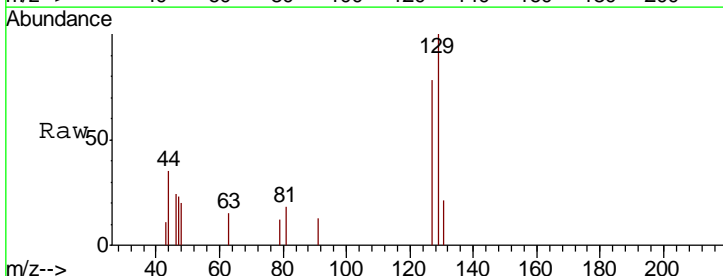
Tgt Ion	Resp	Lower	Upper
43	12850		
43	100		
58	48.3	38.9	58.3
57	17.2	13.3	19.9
100	7.3	6.6	10.0

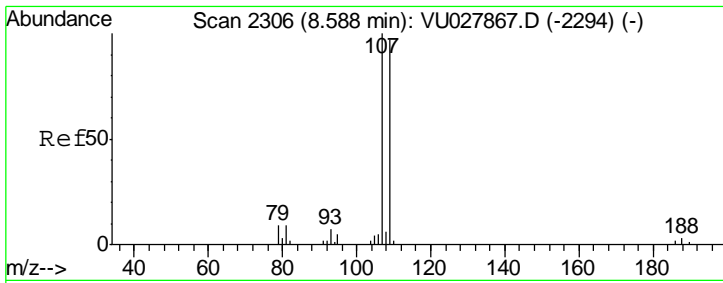
Manual Integrations
APPROVED
 MMDadoda
 11/1/2018 11:16:00 AM



#49
 Dibromochloromethane
 Concen: 0.294 ug/L
 RT: 8.48 min Scan# 2272
 Delta R.T. -0.00 min
 Lab File: VU027878.D
 Acq: 30 Oct 2018 17:52

Tgt Ion	Resp	Lower	Upper
129	1553		
129	100		
127	77.7	54.5	101.1





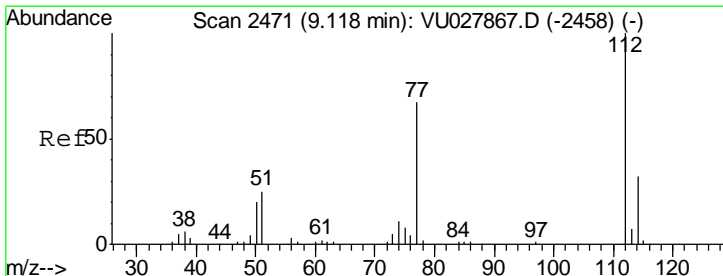
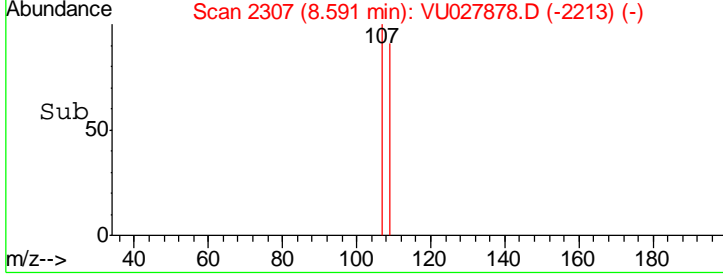
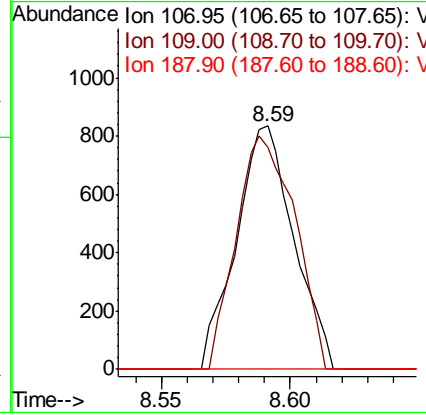
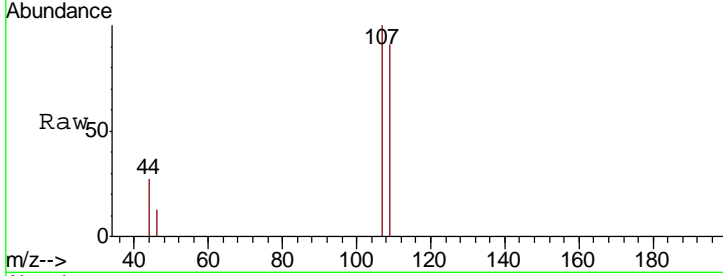
#50
 1,2-Dibromoethane
 Concen: 0.311 ug/L
 RT: 8.59 min Scan# 2307
 Delta R.T. 0.00 min
 Lab File: VU027878.D
 Acq: 30 Oct 2018 17:52

Instrument : MSVOA_U
 ClientSampled : MDL07

Tgt Ion	Ratio	Lower	Upper
107	100		
109	91.0	68.0	126.4
188	0.0	2.7	4.1#

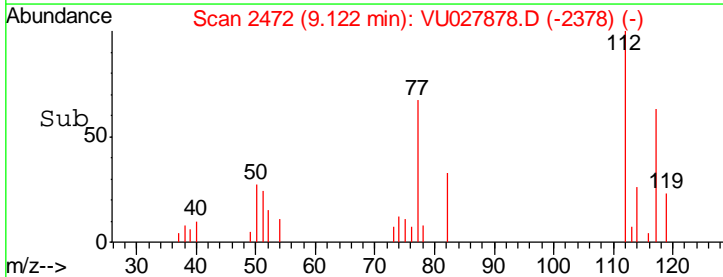
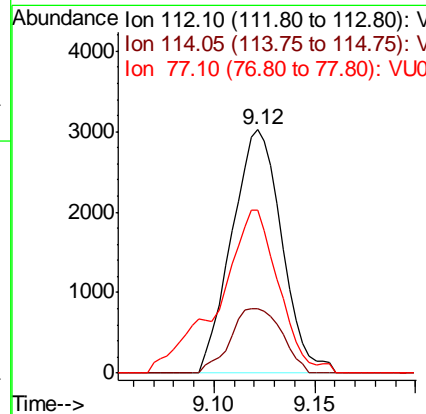
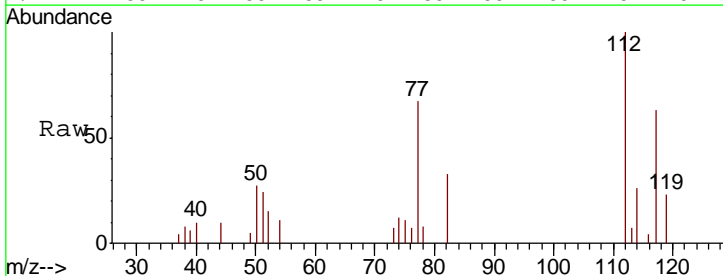
Manual Integrations
 APPROVED

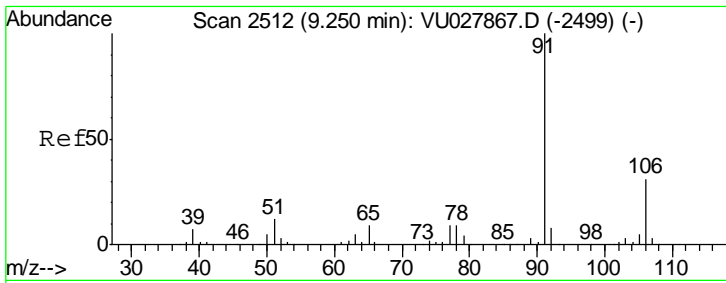
MMDadoda
 11/1/2018 11:16:00 AM



#51
 Chlorobenzene
 Concen: 0.323 ug/L
 RT: 9.12 min Scan# 2472
 Delta R.T. 0.00 min
 Lab File: VU027878.D
 Acq: 30 Oct 2018 17:52

Tgt Ion	Ratio	Lower	Upper
112	100		
114	26.5	22.0	41.0
77	66.7	54.3	81.5



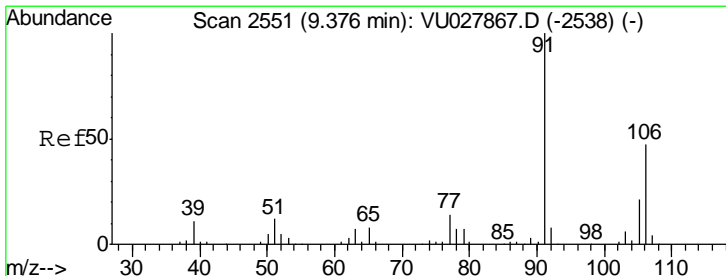
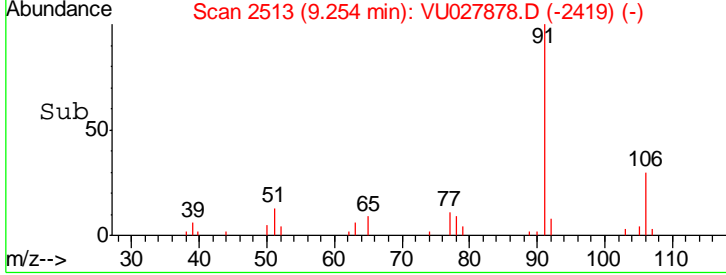
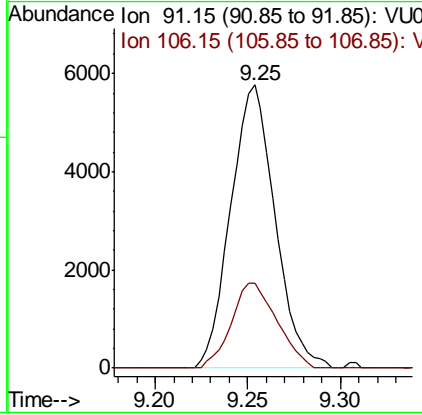
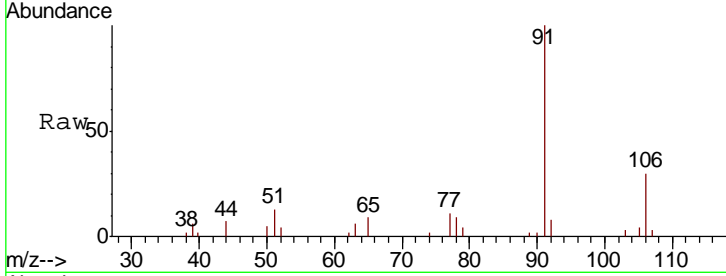


#52
 Ethylbenzene
 Concen: 0.323 ug/L
 RT: 9.25 min Scan# 2513
 Delta R.T. 0.00 min
 Lab File: VU027878.D
 Acq: 30 Oct 2018 17:52

Instrument : MSVOA_U
 ClientSampled : MDL07

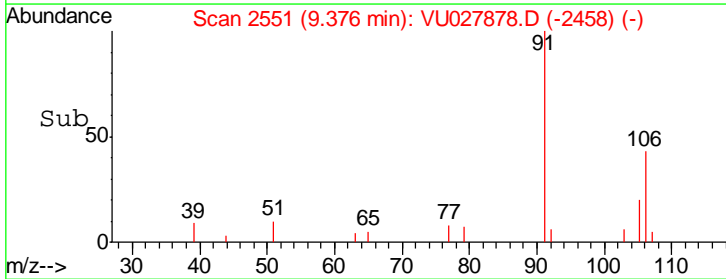
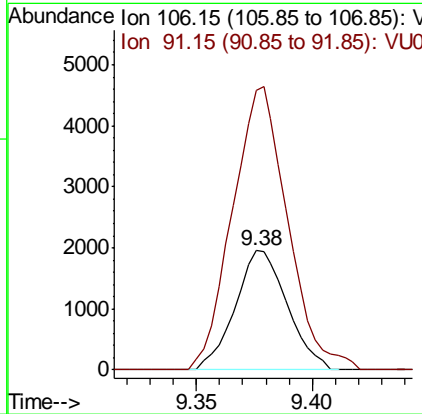
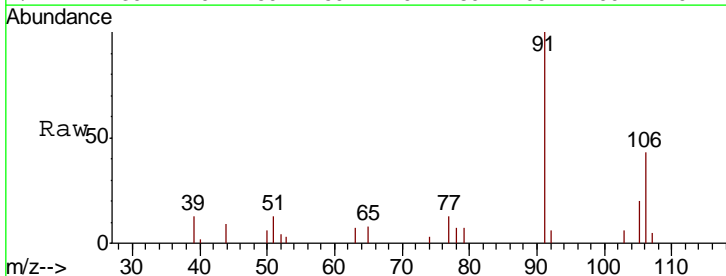
Tgt Ion	Resp	Lower	Upper
91	9611		
106	29.9	21.5	39.9

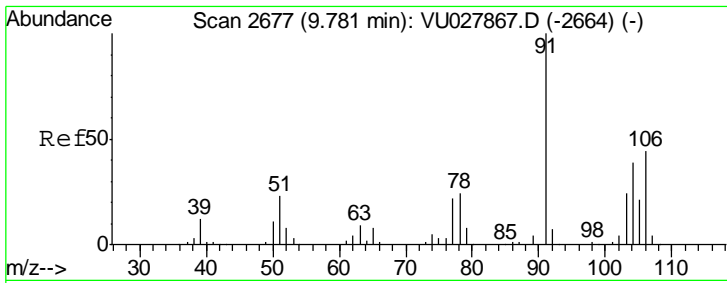
Manual Integrations
APPROVED
 MMDadoda
 11/1/2018 11:16:00 AM



#53
 m,p-xylene
 Concen: 0.283 ug/L
 RT: 9.38 min Scan# 2551
 Delta R.T. -0.00 min
 Lab File: VU027878.D
 Acq: 30 Oct 2018 17:52

Tgt Ion	Resp	Lower	Upper
106	3046		
91	235.0	148.7	276.1



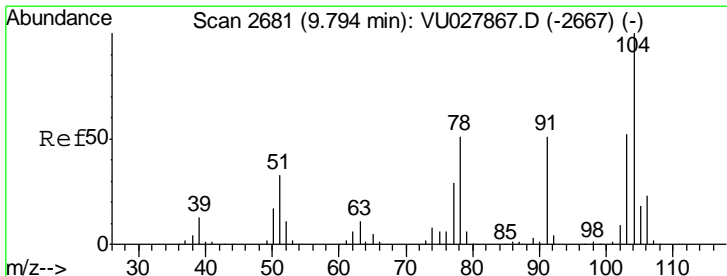
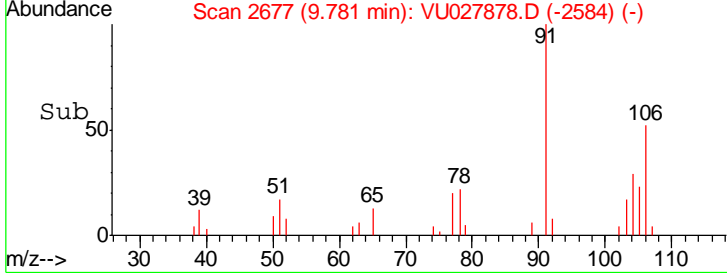
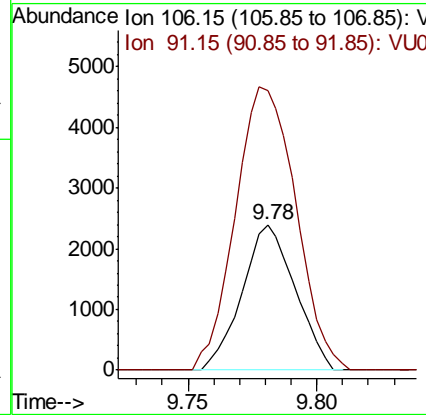
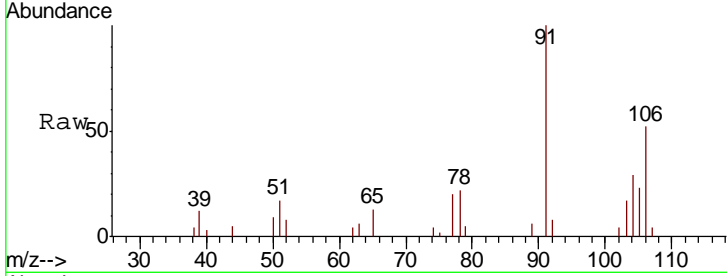


#54
 o-xylene
 Concen: 0.325 ug/L
 RT: 9.78 min Scan# 2677
 Delta R.T. -0.00 min
 Lab File: VU027878.D
 Acq: 30 Oct 2018 17:52

Instrument : MSVOA_U
 ClientSampled : MDL07

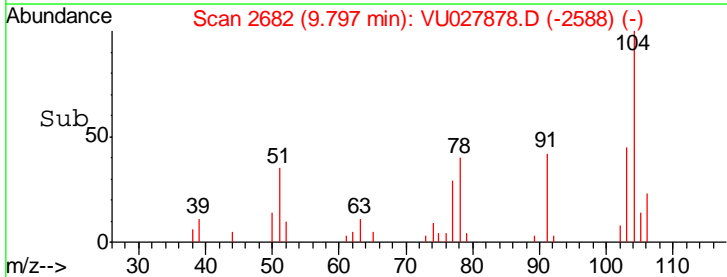
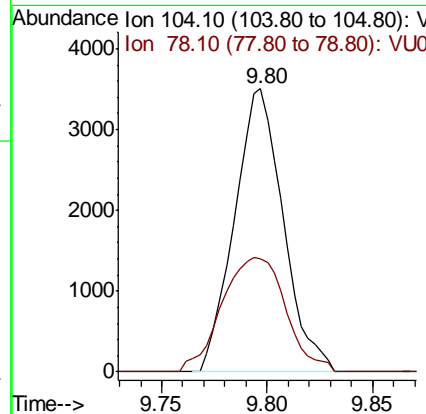
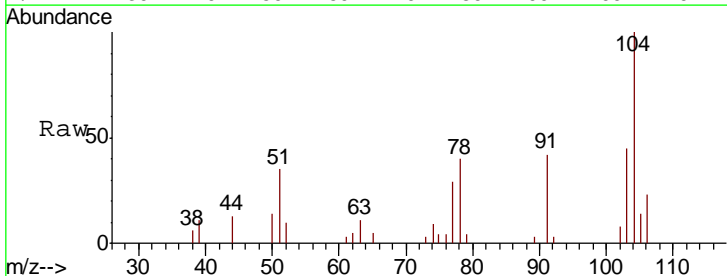
Tgt Ion	Resp	Lower	Upper
106	3437		
106	100		
91	192.2	158.3	293.9

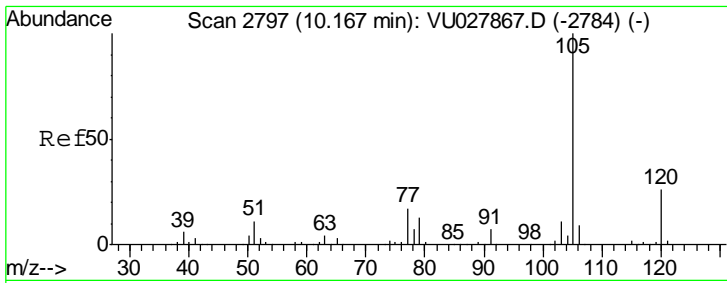
Manual Integrations
APPROVED
 MMDadoda
 11/1/2018 11:16:00 AM



#55
 Styrene
 Concen: 0.316 ug/L
 RT: 9.80 min Scan# 2682
 Delta R.T. 0.00 min
 Lab File: VU027878.D
 Acq: 30 Oct 2018 17:52

Tgt Ion	Resp	Lower	Upper
104	5616		
104	100		
78	40.0	35.6	66.0





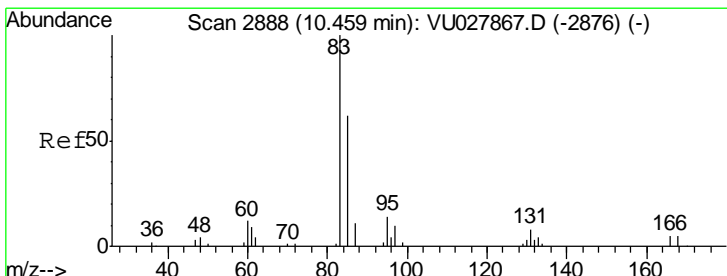
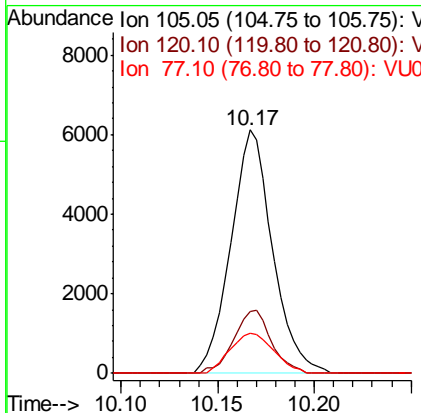
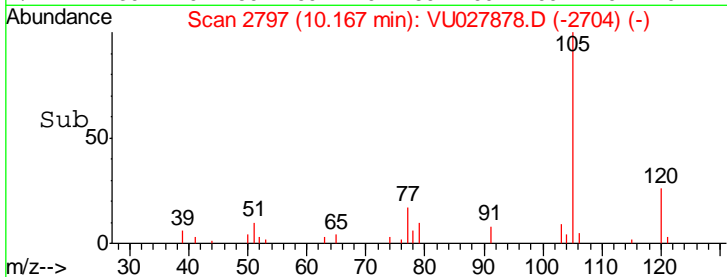
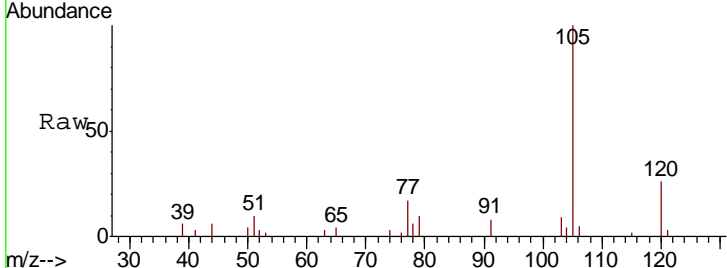
#56
 Isopropylbenzene
 Concen: 0.317 ug/L
 RT: 10.17 min Scan# 2797
 Delta R.T. -0.00 min
 Lab File: VU027878.D
 Acq: 30 Oct 2018 17:52

Instrument : MSVOA_U
 ClientSampled : MDL07

Tgt Ion	Resp	Lower	Upper
105	9147		
120	23.3	20.2	30.2
77	17.4	13.4	20.2

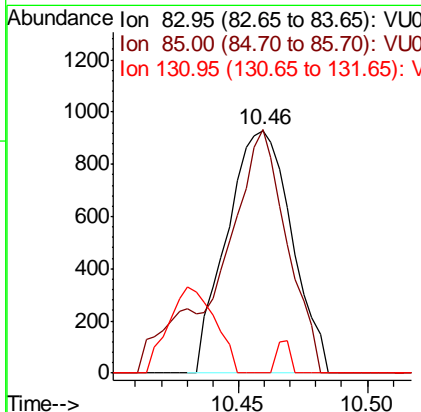
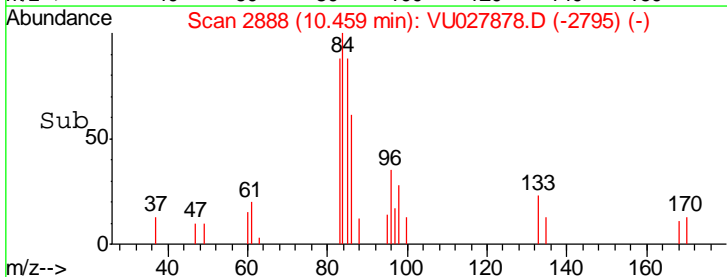
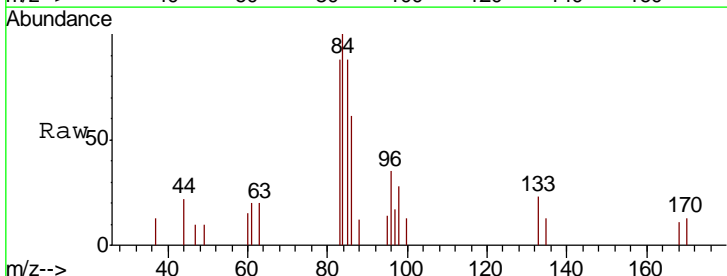
Manual Integrations
 APPROVED

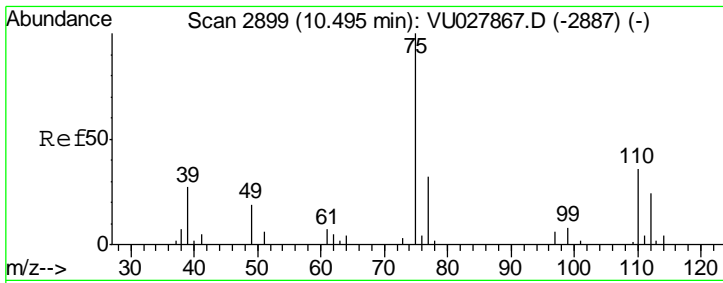
MMDadoda
 11/1/2018 11:16:00 AM



#58
 1,1,2,2-Tetrachloroethane
 Concen: 0.284 ug/L
 RT: 10.46 min Scan# 2888
 Delta R.T. -0.00 min
 Lab File: VU027878.D
 Acq: 30 Oct 2018 17:52

Tgt Ion	Resp	Lower	Upper
83	1620		
85	100.4	44.4	82.4#
131	0.0	6.8	10.2#





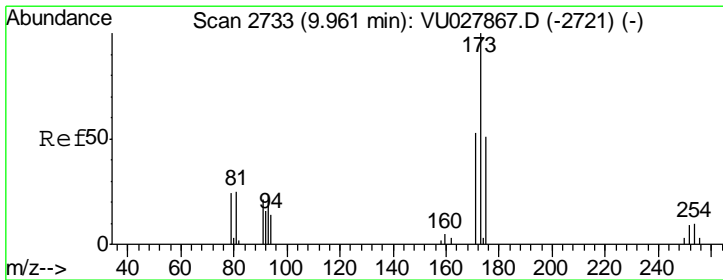
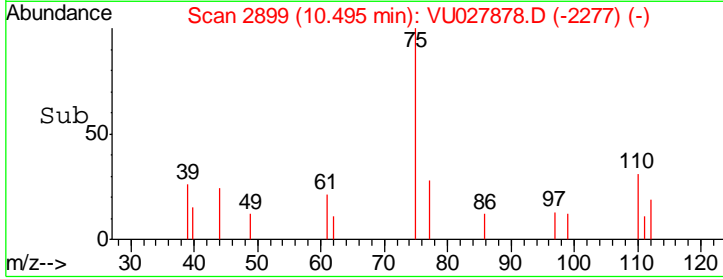
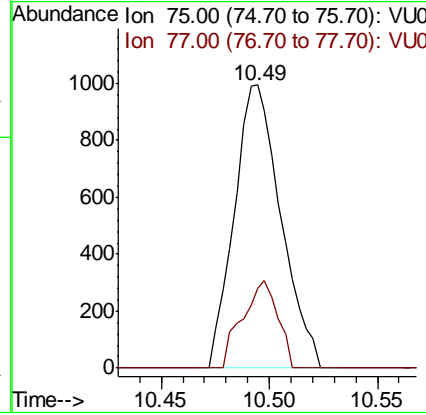
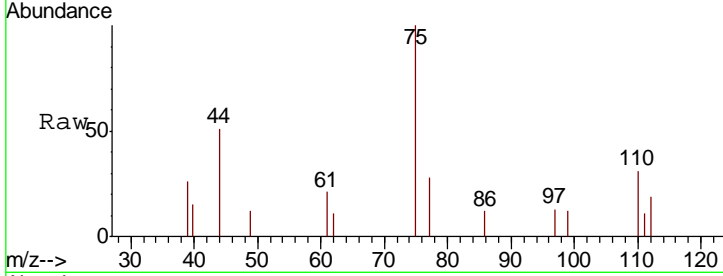
#59
 1,2,3-Trichloropropane
 Concen: 0.346 ug/L m
 RT: 10.49 min Scan# 2899
 Delta R.T. -0.00 min
 Lab File: VU027878.D
 Acq: 30 Oct 2018 17:52

Instrument : MSVOA_U
 ClientSampled : VU027878.D
 MDL07

Tgt Ion	Resp	Lower	Upper
75	1488		
75	100		
77	128.5	25.8	38.6#

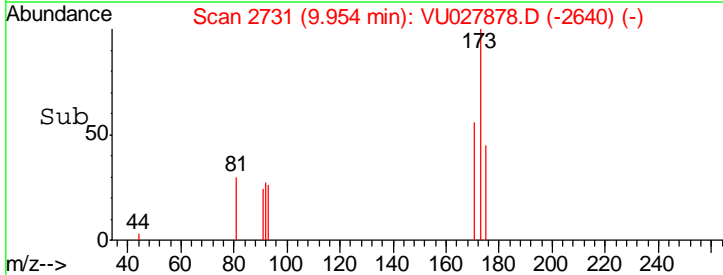
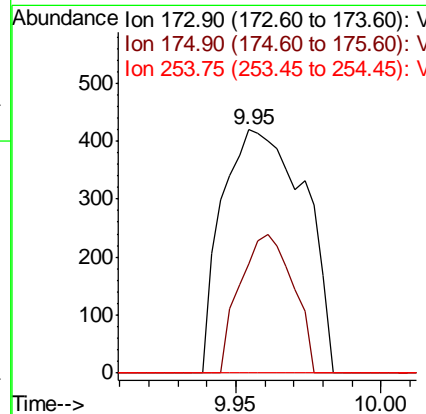
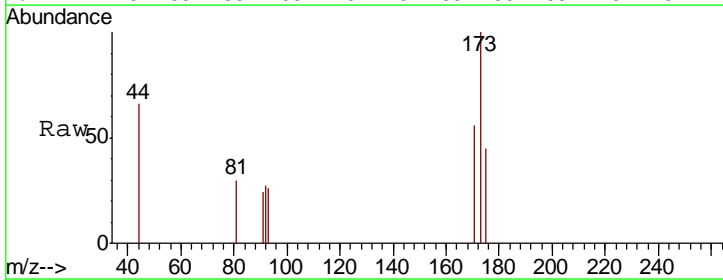
Manual Integrations
 APPROVED

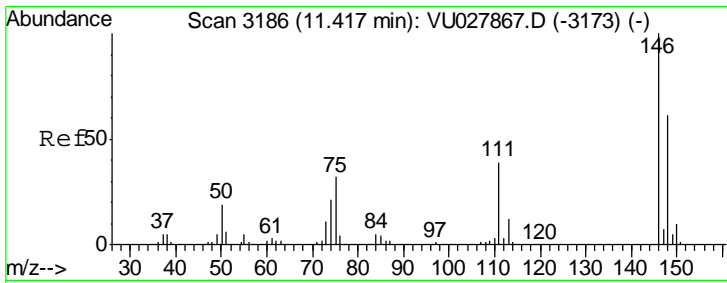
MMDadoda
 11/1/2018 11:16:00 AM



#61
 Bromoform
 Concen: 0.290 ug/L
 RT: 9.95 min Scan# 2731
 Delta R.T. -0.01 min
 Lab File: VU027878.D
 Acq: 30 Oct 2018 17:52

Tgt Ion	Resp	Lower	Upper
173	829		
173	100		
175	36.6	38.3	57.5#
254	0.0	7.8	11.6#



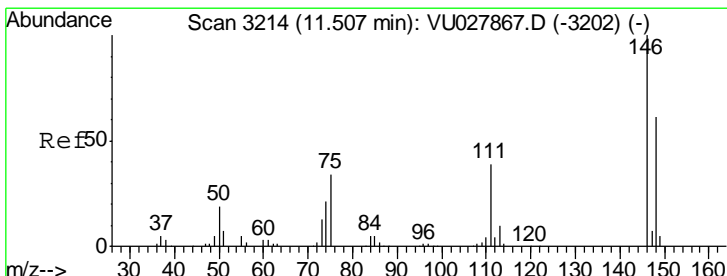
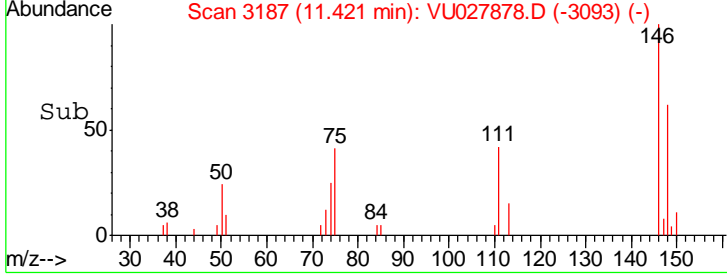
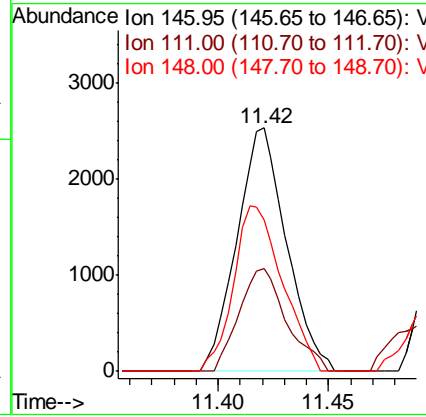
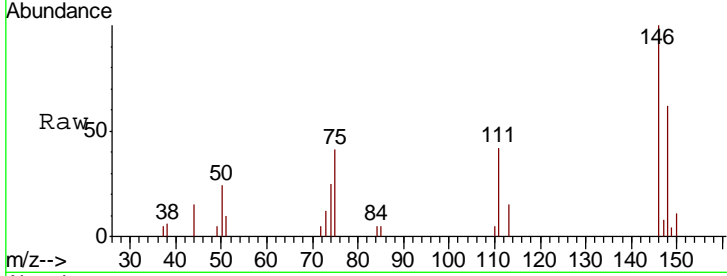


#62
 1,3-Dichlorobenzene
 Concen: 0.316 ug/L
 RT: 11.42 min Scan# 3187
 Delta R.T. 0.00 min
 Lab File: VU027878.D
 Acq: 30 Oct 2018 17:52

Instrument : MSVOA_U
 ClientSampled : MDL07

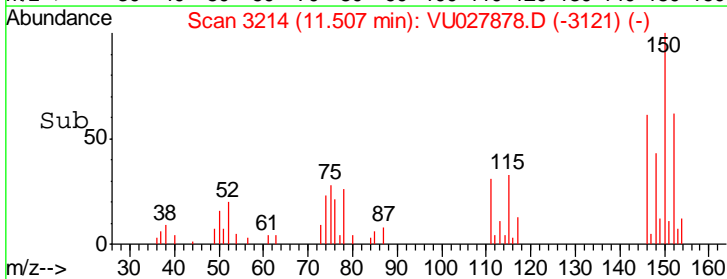
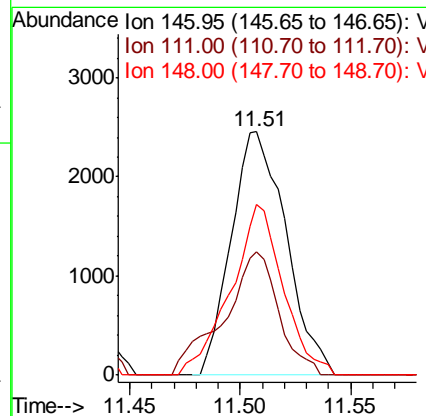
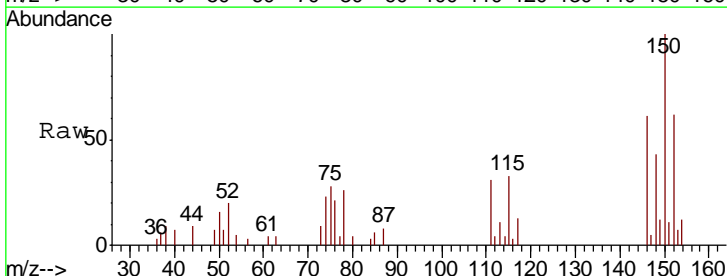
Tgt Ion	Resp	Lower	Upper
146	100		
111	42.3	27.4	51.0
148	62.3	42.6	79.0

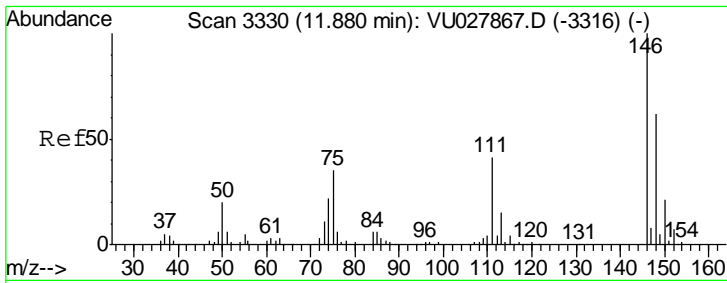
Manual Integrations
APPROVED
 MMDadoda
 11/1/2018 11:16:00 AM



#63
 1,4-Dichlorobenzene
 Concen: 0.338 ug/L
 RT: 11.51 min Scan# 3214
 Delta R.T. -0.00 min
 Lab File: VU027878.D
 Acq: 30 Oct 2018 17:52

Tgt Ion	Resp	Lower	Upper
146	100		
111	50.8	27.4	51.0
148	70.1	43.1	80.1





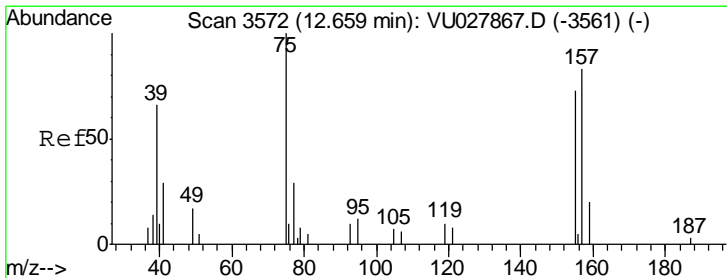
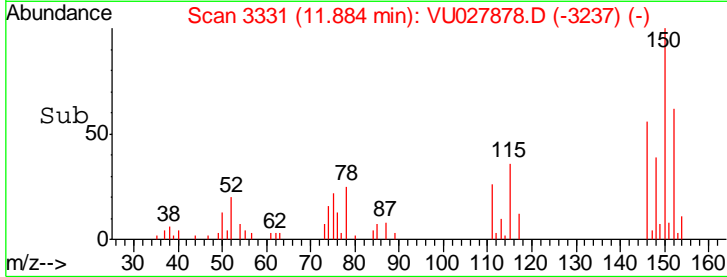
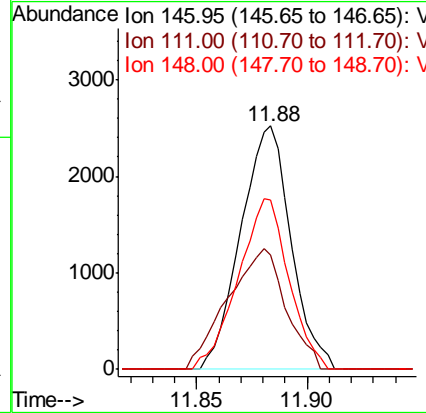
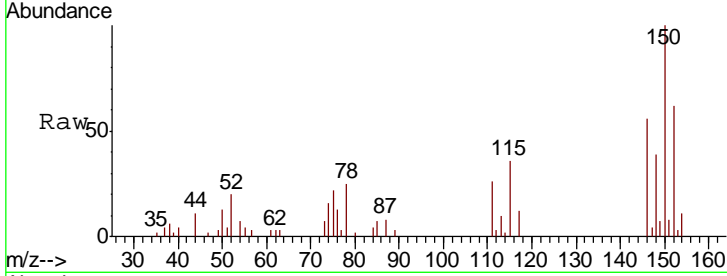
#65
 1,2-Dichlorobenzene
 Concen: 0.338 ug/L
 RT: 11.88 min Scan# 3331
 Delta R.T. 0.00 min
 Lab File: VU027878.D
 Acq: 30 Oct 2018 17:52

Instrument : MSVOA_U
 ClientSampled : VU027878.D
 MDL07

Tgt Ion	Resp	Lower	Upper
146	100		
111	47.0	33.0	49.4
148	69.5	49.2	73.8

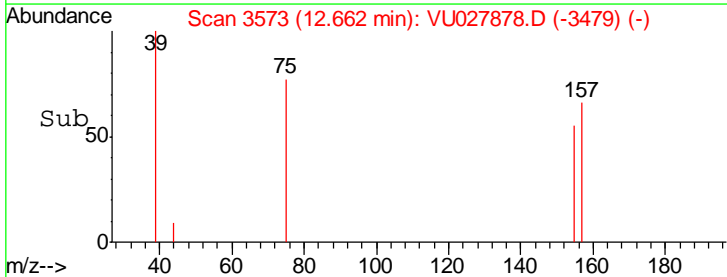
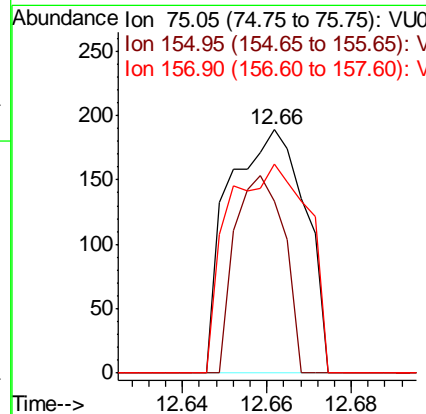
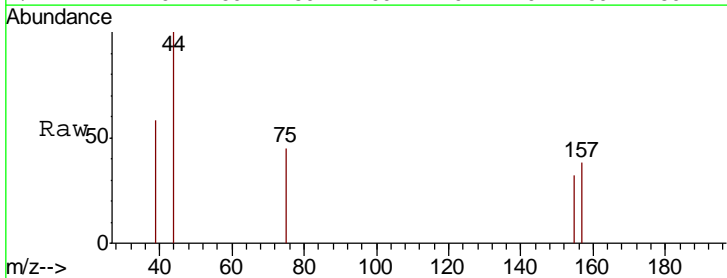
Manual Integrations
 APPROVED

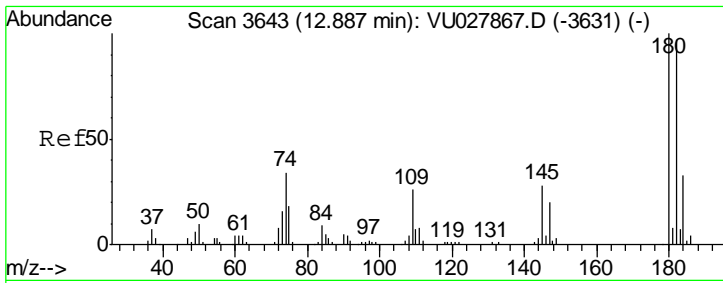
MMDadoda
 11/1/2018 11:16:00 AM



#66
 1,2-Dibromo-3-chloropropane
 Concen: 0.256 ug/L
 RT: 12.66 min Scan# 3573
 Delta R.T. 0.00 min
 Lab File: VU027878.D
 Acq: 30 Oct 2018 17:52

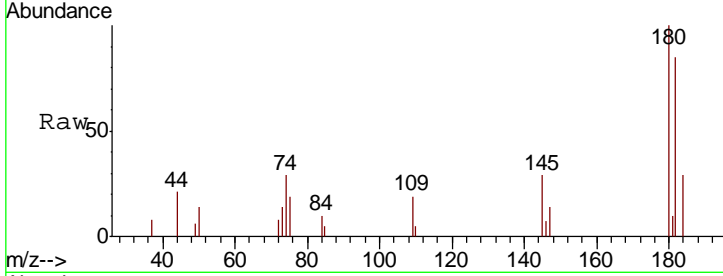
Tgt Ion	Resp	Lower	Upper
75	100		
155	70.9	58.6	87.8
157	85.7	66.7	100.1





#67
 1,3,5-Trichlorobenzene
 Concen: 0.345 ug/L
 RT: 12.89 min Scan# 3644
 Delta R.T. 0.00 min
 Lab File: VU027878.D
 Acq: 30 Oct 2018 17:52

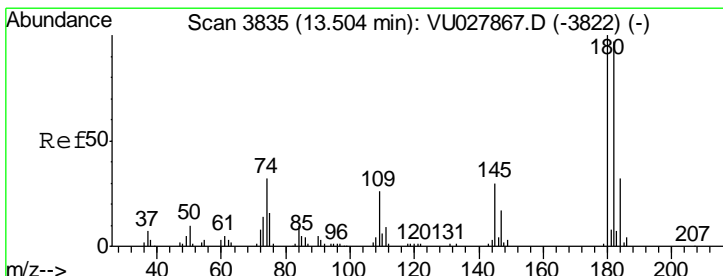
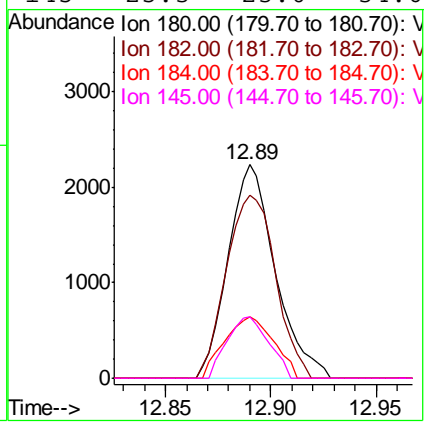
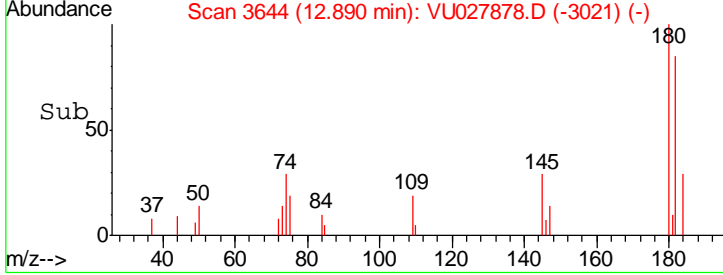
Instrument : MSVOA_U
 ClientSampled : VU027878.D
 MDL07



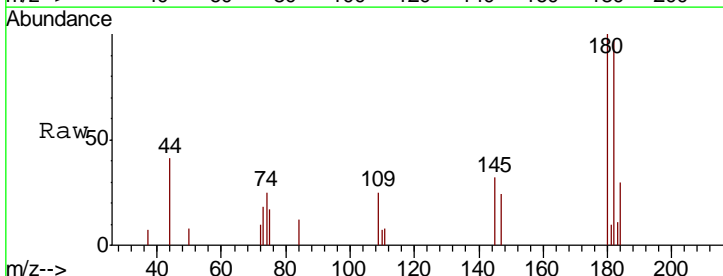
Tgt Ion:180 Resp: 3469

Ion	Ratio	Lower	Upper
180	100		
182	89.5	77.3	115.9
184	29.8	24.6	37.0
145	25.3	23.0	34.6

Manual Integrations
APPROVED
 MMDadoda
 11/1/2018 11:16:00 AM

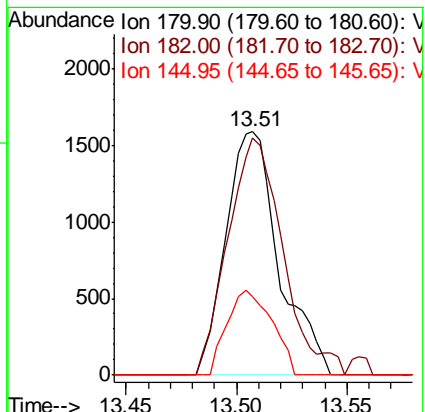
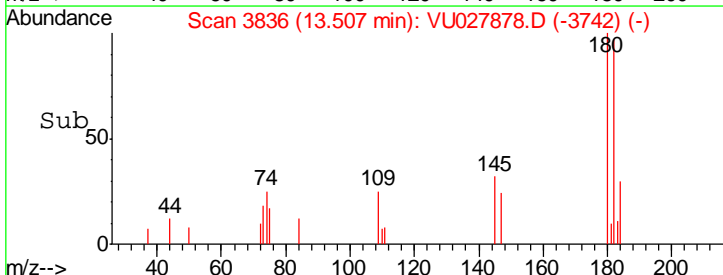


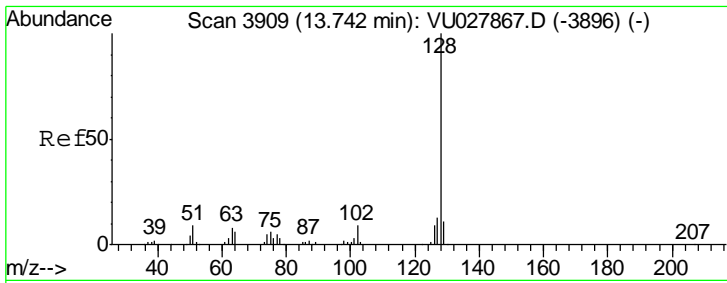
#68
 1,2,4-trichlorobenzene
 Concen: 0.311 ug/L
 RT: 13.51 min Scan# 3836
 Delta R.T. 0.00 min
 Lab File: VU027878.D
 Acq: 30 Oct 2018 17:52



Tgt Ion:180 Resp: 2661

Ion	Ratio	Lower	Upper
180	100		
182	100.7	77.8	116.6
145	29.6	22.9	34.3





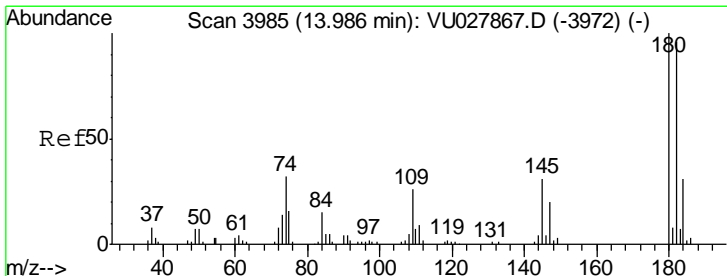
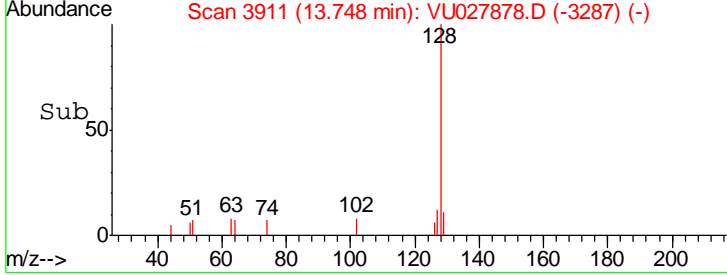
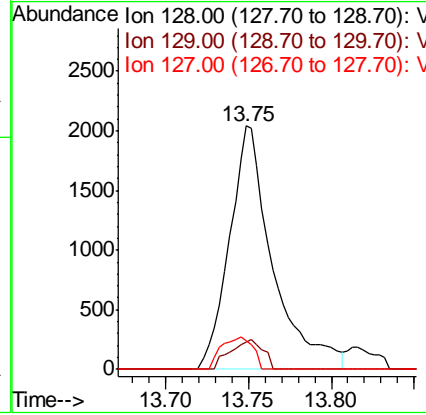
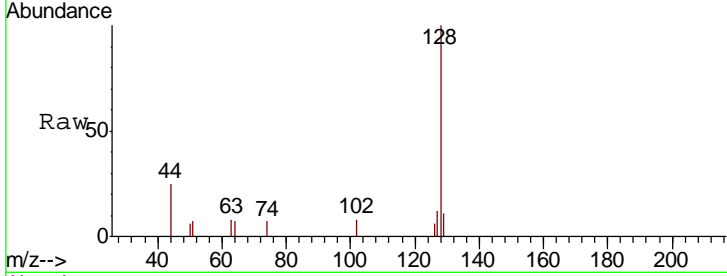
#69
 Naphthalene
 Concen: 0.278 ug/L
 RT: 13.75 min Scan# 3911
 Delta R.T. 0.01 min
 Lab File: VU027878.D
 Acq: 30 Oct 2018 17:52

Instrument : MSVOA_U
 ClientSampled : MDL07

Tgt Ion	Ratio	Lower	Upper
128	100		
129	9.1	8.6	12.8
127	9.7	10.5	15.7#

Manual Integrations
 APPROVED

MMDadoda
 11/1/2018 11:16:00 AM



#70
 1,2,3-Trichlorobenzene
 Concen: 0.267 ug/L
 RT: 13.99 min Scan# 3987
 Delta R.T. 0.01 min
 Lab File: VU027878.D
 Acq: 30 Oct 2018 17:52

Tgt Ion	Ratio	Lower	Upper
180	100		
182	114.2	79.4	119.0
145	32.5	25.4	38.0

