

Data Path : Z:\voasrv\HPCHEM1\MSVOA\_U\Data\VU103023\  
 Data File : VU055998.D  
 Acq On : 30 Oct 2023 15:36  
 Operator : MD/SY  
 Sample : 05113-14  
 Misc : 25.0mL/MSVOA\_U/WATER  
 ALS Vial : 14 Sample Multiplier: 1

Instrument :  
 MSVOA\_U  
 ClientSampleId :

Quant Time: Oct 31 05:31:30 2023  
 Quant Method : Z:\voasrv\HPCHEM1\MSVOA\_U\Method\SFAMUTR102423WMA.M  
 Quant Title : TRACE VOA SFAM1.0  
 QLast Update : Tue Oct 31 05:28:08 2023  
 Response via : Initial Calibration

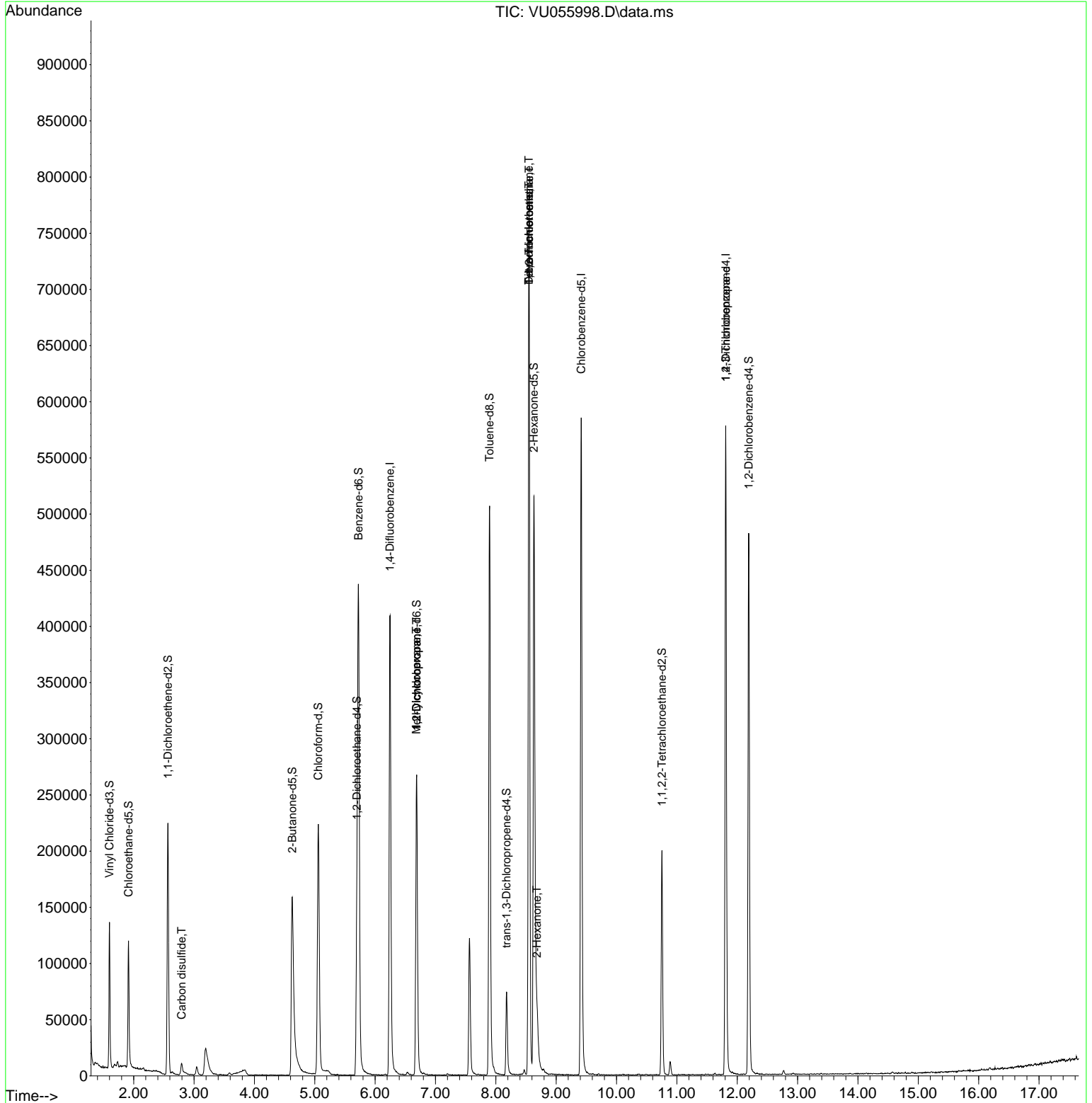
Compound	R.T.	QIon	Response	Conc	Units	Dev(Min)
Internal Standards						
1) 1,4-Difluorobenzene	6.248	114	350008	5.000	ug/L	0.00
28) Chlorobenzene-d5	9.415	117	358651	5.000	ug/L	0.00
58) 1,4-Dichlorobenzene-d4	11.810	152	161228	5.000	ug/L	0.00
System Monitoring Compounds						
4) Vinyl Chloride-d3	1.599	65	94340	3.407	ug/L	0.00
Spiked Amount	5.000	Range 40 - 130	Recovery	=	68.200%	
7) Chloroethane-d5	1.914	69	86359	4.001	ug/L	0.00
Spiked Amount	5.000	Range 65 - 130	Recovery	=	80.000%	
11) 1,1-Dichloroethene-d2	2.566	65	43576	3.707	ug/L	0.00
Spiked Amount	5.000	Range 60 - 125	Recovery	=	74.200%	
20) 2-Butanone-d5	4.627	46	243322	49.262	ug/L	0.00
Spiked Amount	50.000	Range 40 - 130	Recovery	=	98.520%	
24) Chloroform-d	5.058	84	218419	4.257	ug/L	0.00
Spiked Amount	5.000	Range 70 - 125	Recovery	=	85.200%	
26) 1,2-Dichloroethane-d4	5.698	65	106696	4.269	ug/L	0.00
Spiked Amount	5.000	Range 70 - 130	Recovery	=	85.400%	
32) Benzene-d6	5.724	84	435247	4.074	ug/L	0.00
Spiked Amount	5.000	Range 70 - 125	Recovery	=	81.400%	
36) 1,2-Dichloropropane-d6	6.688	67	138890	4.385	ug/L	0.00
Spiked Amount	5.000	Range 60 - 140	Recovery	=	87.800%	
41) Toluene-d8	7.897	98	365373	3.770	ug/L	0.00
Spiked Amount	5.000	Range 70 - 130	Recovery	=	75.400%	
43) trans-1,3-Dichloroprop...	8.177	79	47377	3.825	ug/L	0.00
Spiked Amount	5.000	Range 55 - 130	Recovery	=	76.400%	
46) 2-Hexanone-d5	8.630	63	188328	59.895	ug/L	0.00
Spiked Amount	50.000	Range 45 - 130	Recovery	=	119.780%	
56) 1,1,2,2-Tetrachloroeth...	10.753	84	103561	4.490	ug/L	0.00
Spiked Amount	5.000	Range 65 - 120	Recovery	=	89.800%	
66) 1,2-Dichlorobenzene-d4	12.190	152	135113	4.492	ug/L	0.00
Spiked Amount	5.000	Range 80 - 120	Recovery	=	89.800%	
Target Compounds						
14) Carbon disulfide	2.795	76	10215	0.235	ug/L	97
35) Methylcyclohexane	6.685	83	32656	1.093	ug/L #	18
37) 1,2-Dichloropropane	6.688	63	14055	0.669	ug/L #	89
45) 1,1,2-Trichloroethane	8.553	97	1457	0.099	ug/L #	1
47) Tetrachloroethene	8.550	164	176967	11.414	ug/L	97
48) 2-Hexanone	8.682	43	25020	3.141	ug/L #	79
49) Dibromochloromethane	8.550	129	177076	10.916	ug/L #	11
61) 1,2,3-Trichloropropane	11.810	75	18213	1.645	ug/L #	66

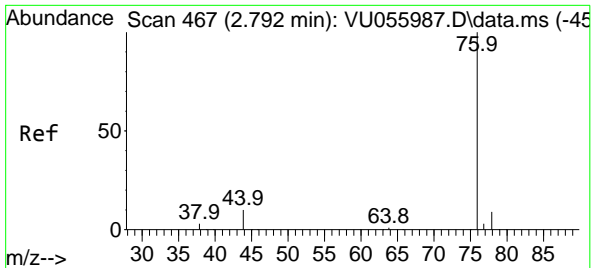
(#) = qualifier out of range (m) = manual integration (+) = signals summed

Data Path : Z:\voasrv\HPCHEM1\MSVOA\_U\Data\VU103023\  
 Data File : VU055998.D  
 Acq On : 30 Oct 2023 15:36  
 Operator : MD/SY  
 Sample : 05113-14  
 Misc : 25.0mL/MSVOA\_U/WATER  
 ALS Vial : 14 Sample Multiplier: 1

Instrument :  
 MSVOA\_U  
 ClientSampleId :

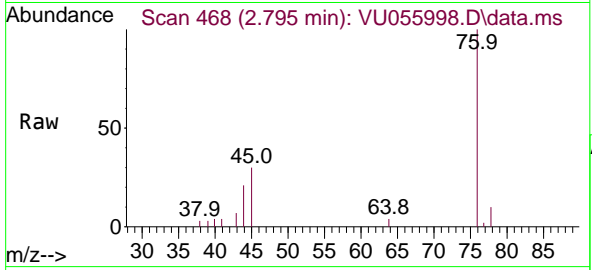
Quant Time: Oct 31 05:31:30 2023  
 Quant Method : Z:\voasrv\HPCHEM1\MSVOA\_U\Method\SFAMUTR102423WMA.M  
 Quant Title : TRACE VOA SFAM1.0  
 QLast Update : Tue Oct 31 05:28:08 2023  
 Response via : Initial Calibration



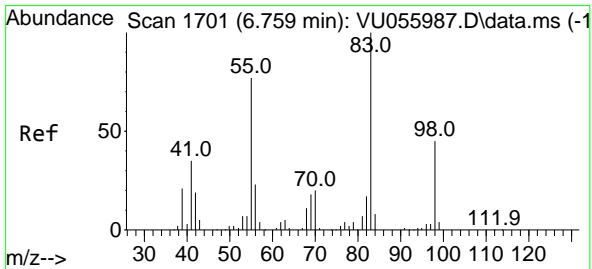
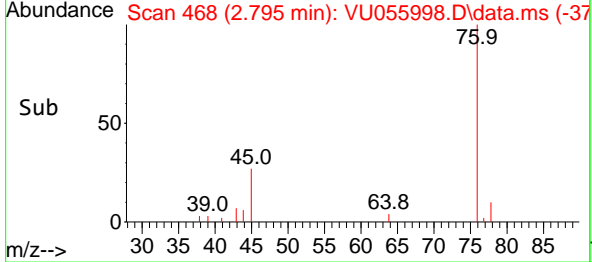
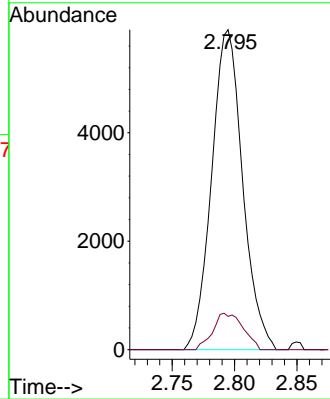


#14  
 Carbon disulfide  
 Concen: 0.235 ug/L  
 RT: 2.795 min Scan# 40  
 Delta R.T. 0.003 min  
 Lab File: VU055998.D  
 Acq: 30 Oct 2023 15:36

Instrument :  
 MSVOA\_U  
 ClientSampleId :

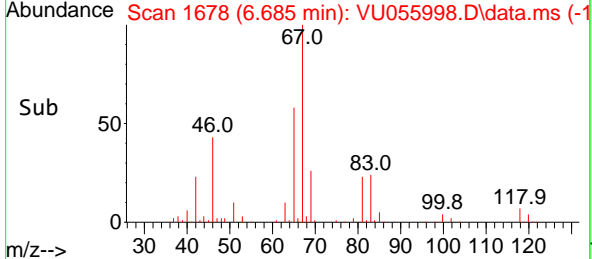
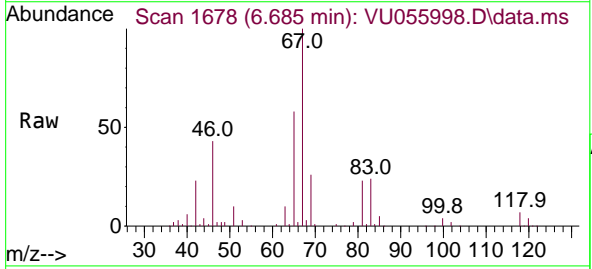
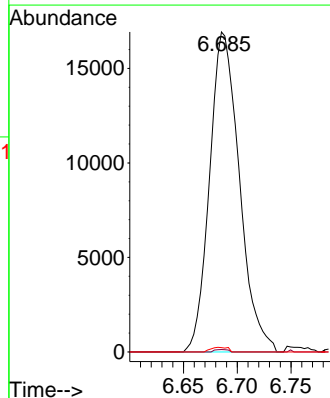


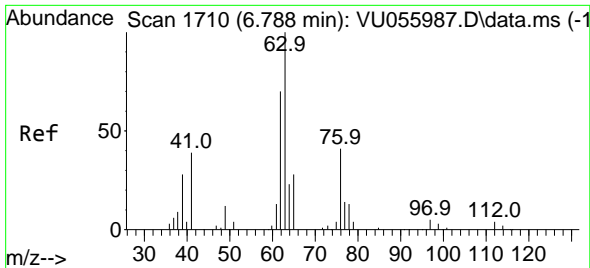
Tgt Ion: 76 Resp: 10215  
 Ion Ratio Lower Upper  
 76 100  
 78 10.4 7.5 11.3



#35  
 Methylcyclohexane  
 Concen: 1.093 ug/L  
 RT: 6.685 min Scan# 1678  
 Delta R.T. -0.074 min  
 Lab File: VU055998.D  
 Acq: 30 Oct 2023 15:36

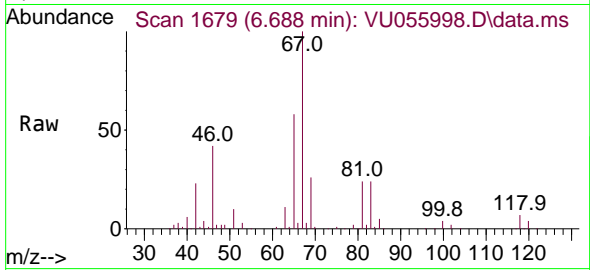
Tgt Ion: 83 Resp: 32656  
 Ion Ratio Lower Upper  
 83 100  
 55 0.3 62.4 93.6#  
 98 0.8 37.4 56.2#



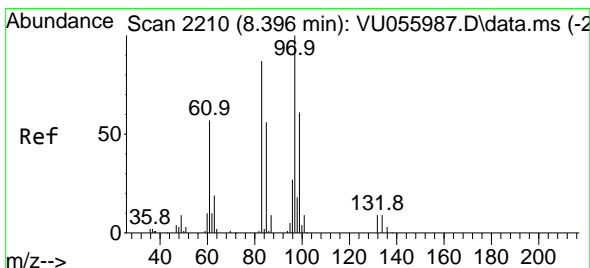
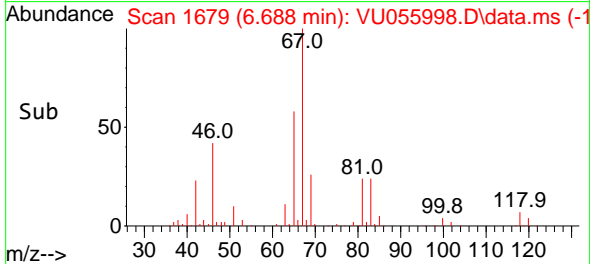
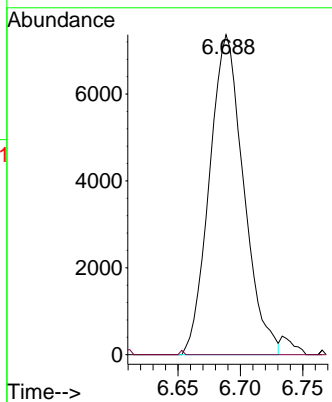


#37  
 1,2-Dichloropropane  
 Concen: 0.669 ug/L  
 RT: 6.688 min Scan# 1  
 Delta R.T. -0.100 min  
 Lab File: VU055998.D  
 Acq: 30 Oct 2023 15:36

Instrument :  
 MSVOA\_U  
 ClientSampleId :

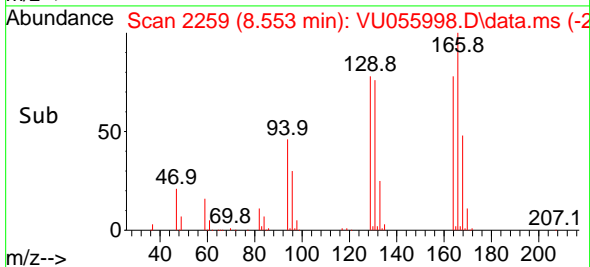
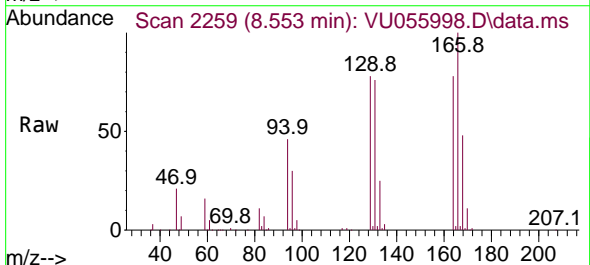
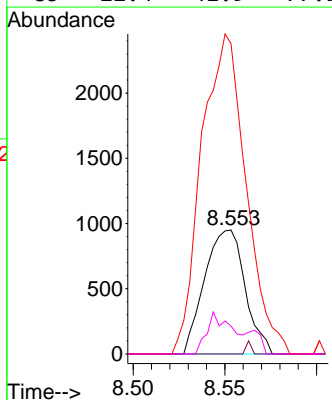


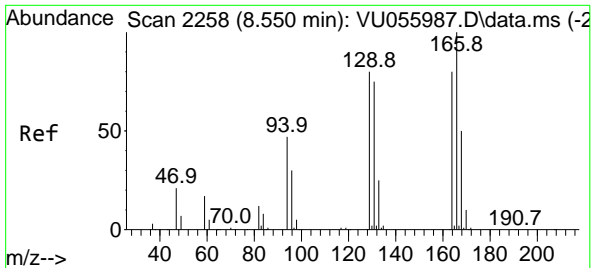
Tgt Ion: 63 Resp: 14055  
 Ion Ratio Lower Upper  
 63 100  
 112 0.1 3.1 4.7#



#45  
 1,1,2-Trichloroethane  
 Concen: 0.099 ug/L  
 RT: 8.553 min Scan# 2259  
 Delta R.T. 0.157 min  
 Lab File: VU055998.D  
 Acq: 30 Oct 2023 15:36

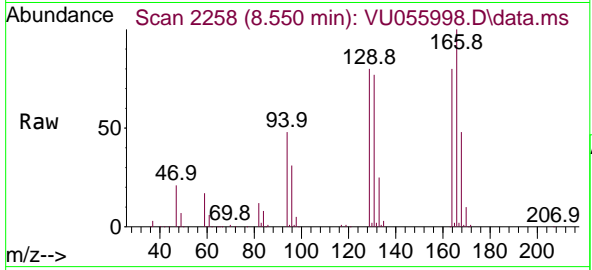
Tgt Ion: 97 Resp: 1457  
 Ion Ratio Lower Upper  
 97 100  
 99 0.0 45.3 84.1#  
 83 250.3 61.9 115.1#  
 85 22.4 41.9 77.9#



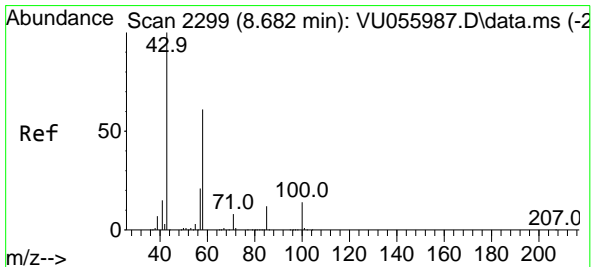
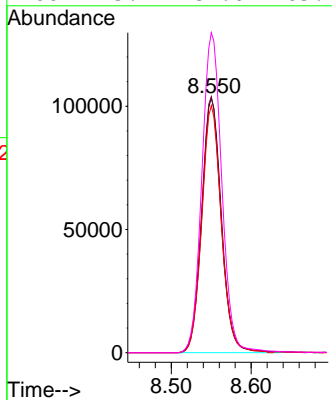
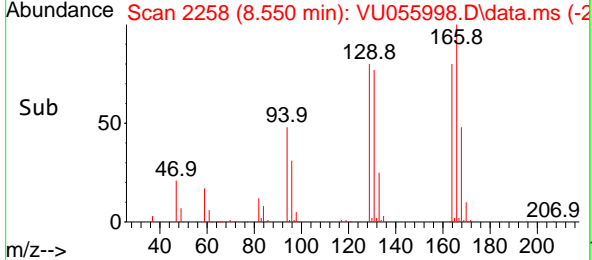


#47  
 Tetrachloroethene  
 Concen: 11.414 ug/L  
 RT: 8.550 min Scan# 21  
 Delta R.T. -0.000 min  
 Lab File: VU055998.D  
 Acq: 30 Oct 2023 15:36

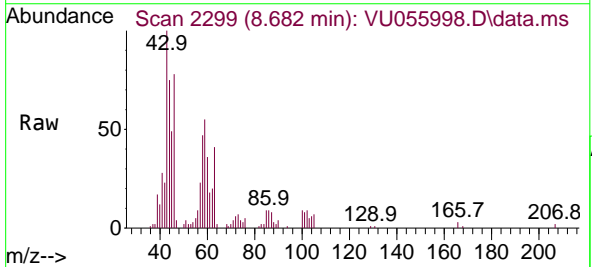
Instrument :  
 MSVOA\_U  
 ClientSampleId :



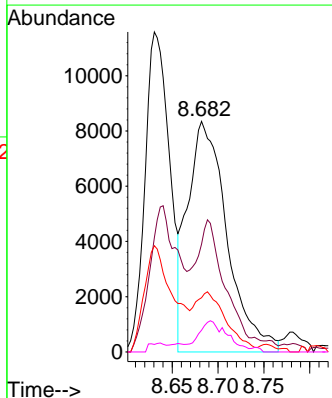
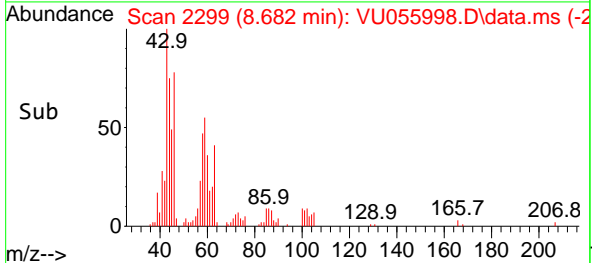
Tgt Ion:164 Resp: 176967  
 Ion Ratio Lower Upper  
 164 100  
 129 100.4 72.2 134.0  
 131 96.9 70.8 131.6  
 166 125.4 89.0 165.2

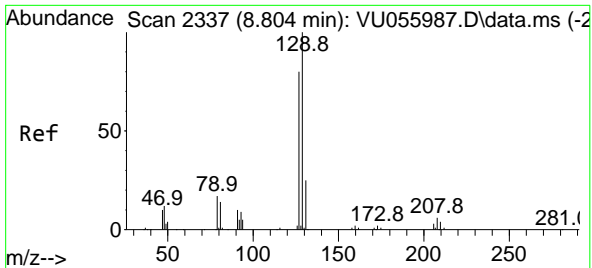


#48  
 2-Hexanone  
 Concen: 3.141 ug/L  
 RT: 8.682 min Scan# 2299  
 Delta R.T. -0.000 min  
 Lab File: VU055998.D  
 Acq: 30 Oct 2023 15:36



Tgt Ion: 43 Resp: 25020  
 Ion Ratio Lower Upper  
 43 100  
 58 37.7 49.5 74.3#  
 57 20.9 16.9 25.3  
 100 9.7 9.7 14.5

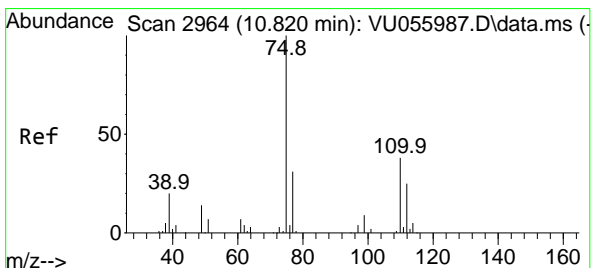
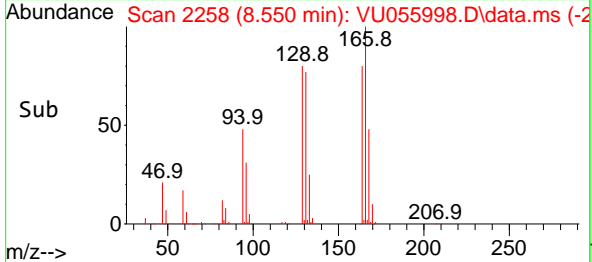
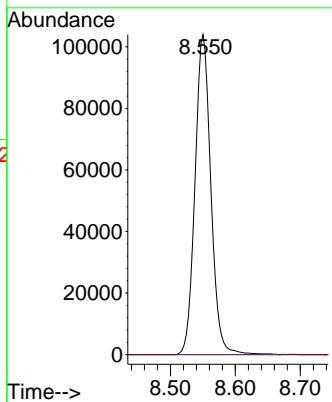
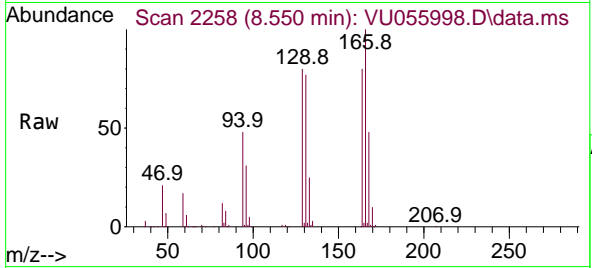




#49  
 Dibromochloromethane  
 Concen: 10.916 ug/L  
 RT: 8.550 min Scan# 211  
 Delta R.T. -0.254 min  
 Lab File: VU055998.D  
 Acq: 30 Oct 2023 15:36

Instrument :  
 MSVOA\_U  
 ClientSampleId :

Tgt Ion:129 Resp: 177076  
 Ion Ratio Lower Upper  
 129 100  
 127 0.0 53.5 99.5#



#61  
 1,2,3-Trichloropropane  
 Concen: 1.645 ug/L  
 RT: 11.810 min Scan# 3272  
 Delta R.T. 0.990 min  
 Lab File: VU055998.D  
 Acq: 30 Oct 2023 15:36

Tgt Ion: 75 Resp: 18213  
 Ion Ratio Lower Upper  
 75 100  
 110 2.0 29.0 43.6#  
 77 33.8 24.5 36.7

