

Data Path : Z:\VOASRV\HPCHEM1\MSVOA U\DATA\VU110220\
 Data File : VU041061.D
 Acq On : 02 Nov 2020 19:37
 Operator : SY/MD
 Sample : L4584-05
 Misc : 25.0mL/MSVOA U/WATER
 ALS Vial : 23 Sample Multiplier: 1

Instrument :
 MSVOA_U
 ClientSampleId :
 BFSF6

Quant Time: Nov 03 02:00:57 2020
 Quant Method : Z:\VOASRV\HPCHEM1\MSVOA_U\METHOD\SOMUTR102620WMA.M
 Quant Title : TRACE VOA SOM01.0
 QLast Update : Tue Nov 03 00:40:40 2020
 Response via : Initial Calibration

Internal Standards	R.T.	QIon	Response	Conc	Units	Dev(Min)
1) 1,4-Difluorobenzene	6.26	114	47209	5.00	ug/L	0.00
28) Chlorobenzene-d5	9.42	117	48459	5.00	ug/L	0.00
60) 1,4-Dichlorobenzene-d4	11.81	152	21297	5.00	ug/L	0.00

System Monitoring Compounds

4) Vinyl Chloride-d3	1.61	65	20032	5.05	ug/L	0.00
Spiked Amount	5.000	Range	40 - 130	Recovery	=	101.00%
7) Chloroethane-d5	1.93	69	15465	5.07	ug/L	0.00
Spiked Amount	5.000	Range	65 - 130	Recovery	=	101.40%
11) 1,1-Dichloroethene-d2	2.58	63	29303	3.77	ug/L	0.00
Spiked Amount	5.000	Range	60 - 125	Recovery	=	75.40%
20) 2-Butanone-d5	4.66	46	78965	60.46	ug/L	0.01
Spiked Amount	50.000	Range	40 - 130	Recovery	=	120.92%
24) Chloroform-d	5.08	84	37227	5.31	ug/L	0.00
Spiked Amount	5.000	Range	70 - 125	Recovery	=	106.20%
26) 1,2-Dichloroethane-d4	5.72	65	24142	5.55	ug/L	0.00
Spiked Amount	5.000	Range	70 - 130	Recovery	=	111.00%
32) Benzene-d6	5.74	84	67642	5.22	ug/L	0.00
Spiked Amount	5.000	Range	70 - 125	Recovery	=	104.40%
36) 1,2-Dichloropropane-d6	6.70	67	23636	5.60	ug/L	0.00
Spiked Amount	5.000	Range	60 - 140	Recovery	=	112.00%
41) Toluene-d8	7.91	98	55299	4.71	ug/L	0.00
Spiked Amount	5.000	Range	70 - 130	Recovery	=	94.20%
43) trans-1,3-Dichloropropene-	8.19	79	9051	4.95	ug/L	0.00
Spiked Amount	5.000	Range	55 - 130	Recovery	=	99.00%
46) 2-Hexanone-d5	8.64	63	55136	55.99	ug/L	0.00
Spiked Amount	50.000	Range	45 - 130	Recovery	=	111.98%
57) 1,1,2,2-Tetrachloroethane-	10.75	84	21622	5.52	ug/L	0.00
Spiked Amount	5.000	Range	65 - 120	Recovery	=	110.40%
64) 1,2-Dichlorobenzene-d4	12.19	152	20602	5.51	ug/L	0.00
Spiked Amount	5.000	Range	80 - 120	Recovery	=	110.20%

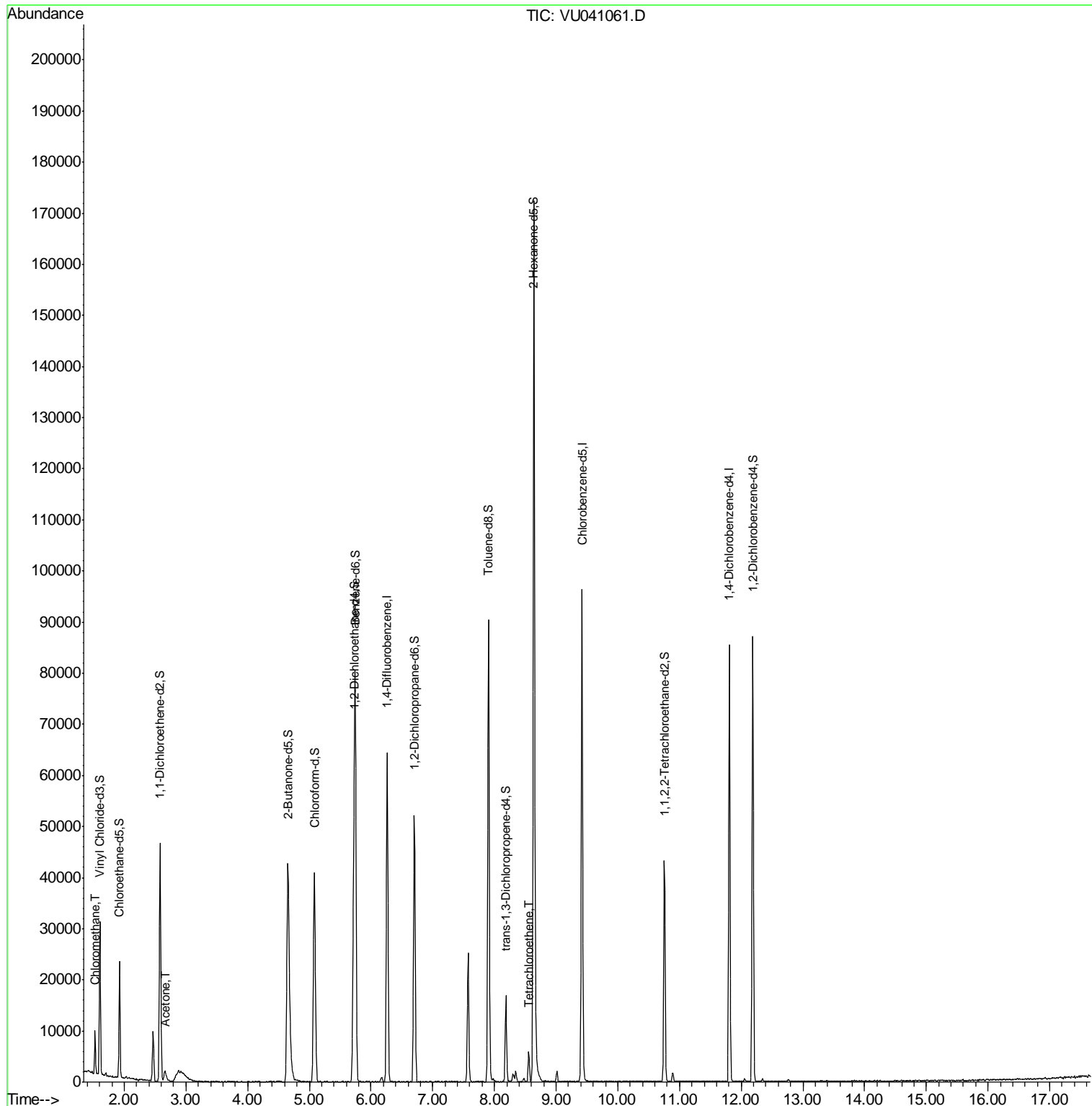
Target Compounds					Ovalue
3) Chloromethane	1.53	50	5823	1.296 ug/L	99
13) Acetone	2.66	43	4115	4.608 ug/L	95
47) Tetrachloroethene	8.56	164	1023	0.378 ug/L	81

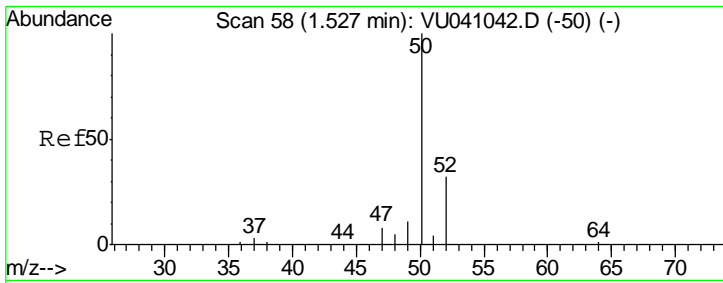
(#) = qualifier out of range (m) = manual integration (+) = signals summed

Data Path : Z:\VOASRV\HPCHEM1\MSVOA U\DATA\VU110220\
 Data File : VU041061.D
 Acq On : 02 Nov 2020 19:37
 Operator : SY/MD
 Sample : L4584-05
 Misc : 25.0mL/MSVOA U/WATER
 ALS Vial : 23 Sample Multiplier: 1

Instrument :
 MSVOA_U
 ClientSampled :
 BFSF6

Quant Time: Nov 03 02:00:57 2020
 Quant Method : Z:\VOASRV\HPCHEM1\MSVOA_U\METHOD\SOMUTR102620WMA.M
 Quant Title : TRACE VOA SOM01.0
 QLast Update : Tue Nov 03 00:40:40 2020
 Response via : Initial Calibration

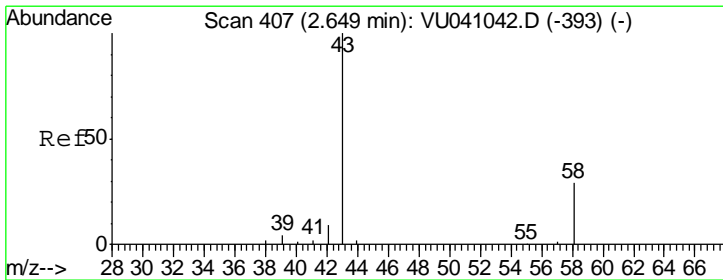
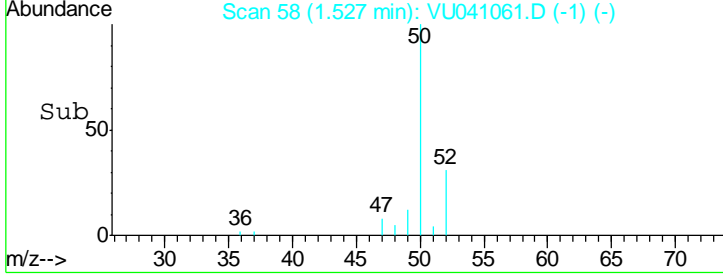
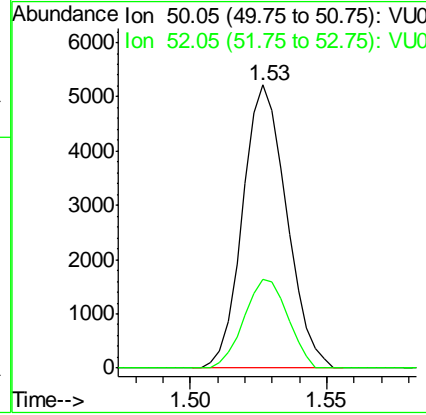
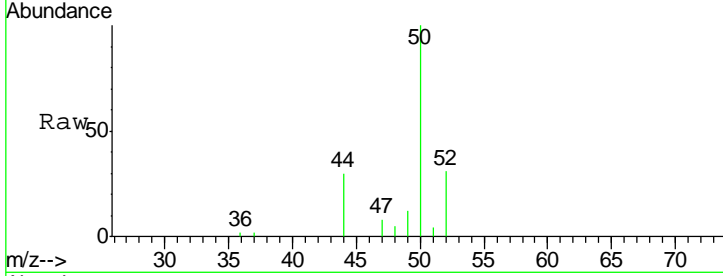




#3
 Chloromethane
 Concen: 1.296 ug/L
 RT: 1.53 min Scan# 58
 Delta R.T. 0.00 min
 Lab File: VU041061.D
 Acq: 02 Nov 2020 19:37

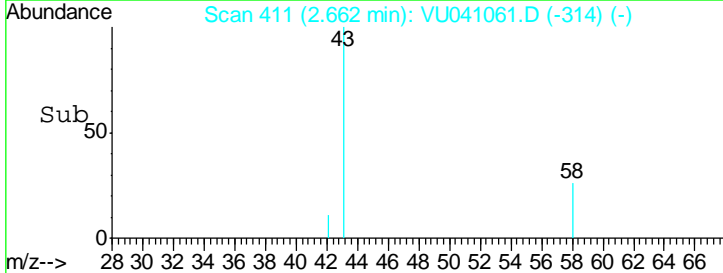
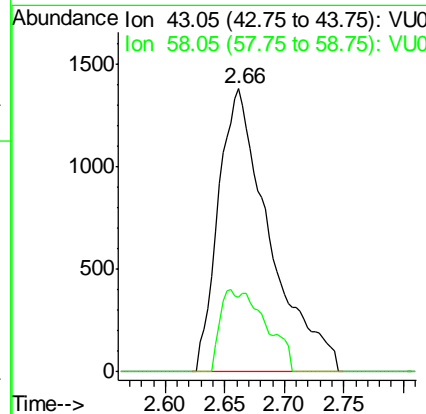
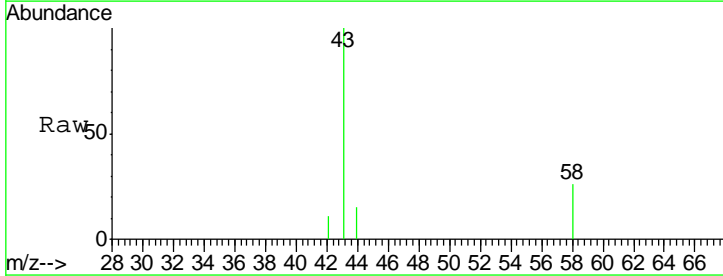
Instrument :
 MSVOA_U
ClientSampled :
 BFSF6

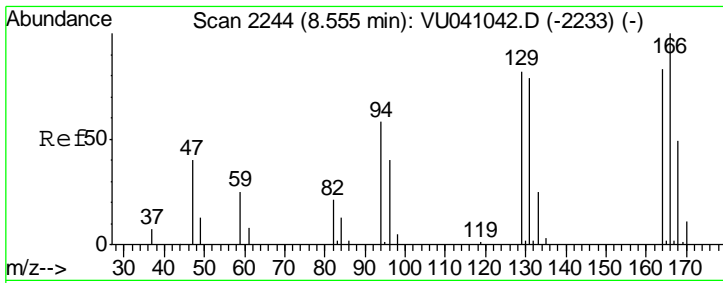
Tgt Ion	Resp	Lower	Upper
50	5823		
52	31.2	22.4	41.6



#13
 Acetone
 Concen: 4.608 ug/L
 RT: 2.66 min Scan# 411
 Delta R.T. 0.01 min
 Lab File: VU041061.D
 Acq: 02 Nov 2020 19:37

Tgt Ion	Resp	Lower	Upper
43	4115		
58	10.5	0.0	25.4





#47
 Tetrachloroethene
 Concen: 0.378 ug/L
 RT: 8.56 min Scan# 2246
 Delta R.T. 0.01 min
 Lab File: VU041061.D
 Acq: 02 Nov 2020 19:37

Instrument :
 MSVOA_U
ClientSampled :
 BFSF6

Tot Ion:164 Resp: 1023

Ion	Ratio	Lower	Upper
164	100		
129	122.4	70.3	130.7
131	122.8	70.8	131.4
166	150.0	92.0	170.8

