

Data Path : Z:\VOASRV\HPCHEM1\MSVOA U\DATA\VU110518\
 Data File : VU027965.D
 Acq On : 05 Nov 2018 18:14
 Operator : MD/SY
 Sample : J5778-05
 Misc : 5.0mL/MSVOA U/WATER
 ALS Vial : 27 Sample Multiplier: 1

Instrument :
 MSVOA_U
 ClientSampled :
 OILY-GRAVEL

Quant Time: Nov 06 03:26:17 2018
 Quant Method : Z:\VOASRV\HPCHEM1\MSVOA_U\METHOD\82U110218W.M
 Quant Title : SW846 8260
 QLast Update : Fri Nov 02 02:28:20 2018
 Response via : Initial Calibration

Internal Standards	R.T.	QIon	Response	Conc	Units	Dev(Min)
1) Pentafluorobenzene	4.99	168	189662	50.00	ug/l	0.00
34) 1,4-Difluorobenzene	5.89	114	351243	50.00	ug/l	0.00
63) Chlorobenzene-d5	9.09	117	315184	50.00	ug/l	0.00
72) 1,4-Dichlorobenzene-d4	11.48	152	134193	50.00	ug/l	0.00

System Monitoring Compounds

33) 1,2-Dichloroethane-d4	5.31	65	154039	54.63	ug/l	0.00
Spiked Amount	50.000		Recovery	=	109.26%	
35) Dibromofluoromethane	4.89	113	116264	52.50	ug/l	0.00
Spiked Amount	50.000		Recovery	=	105.00%	
50) Toluene-d8	7.57	98	450739	52.69	ug/l	0.00
Spiked Amount	50.000		Recovery	=	105.38%	
62) 4-Bromofluorobenzene	10.31	95	154004	48.81	ug/l	0.00
Spiked Amount	50.000		Recovery	=	97.62%	

Target Compounds

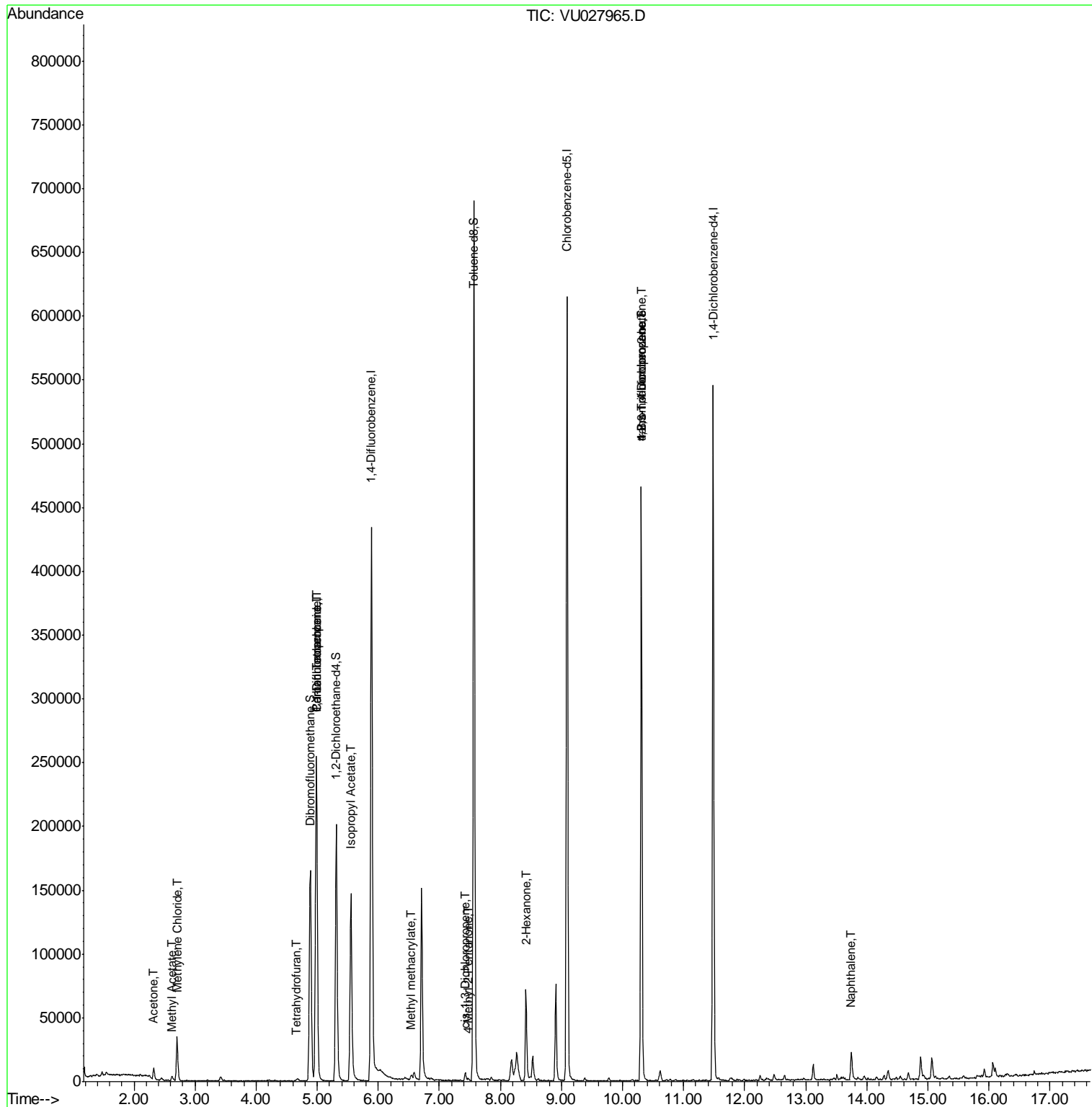
					Qvalue	
13) Acrolein	2.20	56	97	Below Cal	#	1
16) Acetone	2.32	43	9466	5.411	ug/l	93
18) Methyl Acetate	2.62	43	4417	0.918	ug/l	98
20) Methylene Chloride	2.71	84	14317	5.605	ug/l	97
29) Tetrahydrofuran	4.66	42	474	0.255	ug/l #	50
31) Cyclohexane	4.98	56	4666	Below Cal	#	1
36) 1,1-Dichloropropene	4.98	75	16520	4.491	ug/l #	49
38) Carbon Tetrachloride	4.98	117	18559	5.693	ug/l #	16
43) Isopropyl Acetate	5.55	43	179630	21.271	ug/l	99
48) Methyl methacrylate	6.54	41	6476	1.565	ug/l #	28
51) 4-Methyl-2-Pentanone	7.47	43	1151	0.204	ug/l #	78
54) cis-1,3-Dichloropropene	7.42	75	950	0.214	ug/l #	66
59) 2-Hexanone	8.42	43	11757	2.695	ug/l #	55
76) 1,2,3-Trichloropropane	10.31	75	79424	21.638	ug/l #	35
81) trans-1,4-Dichloro-2-buten	10.31	75	79424	54.005	ug/l #	100
95) Naphthalene	13.75	128	19736	1.617	ug/l	98

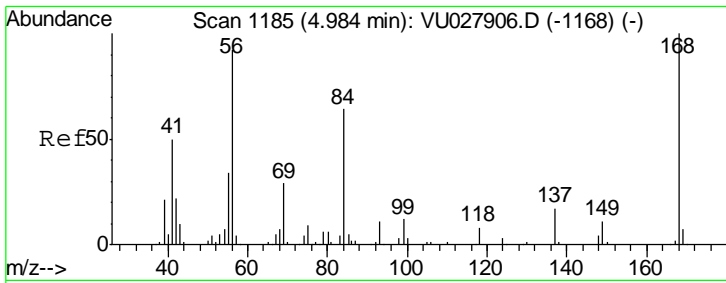
(#) = qualifier out of range (m) = manual integration (+) = signals summed

Data Path : Z:\VOASRV\HPCHEM1\MSVOA U\DATA\VU110518\
 Data File : VU027965.D
 Acq On : 05 Nov 2018 18:14
 Operator : MD/SY
 Sample : J5778-05
 Misc : 5.0mL/MSVOA U/WATER
 ALS Vial : 27 Sample Multiplier: 1

Instrument :
 MSVOA_U
 Client Sampled :
 OILY-GRAVEL

Quant Time: Nov 06 03:26:17 2018
 Quant Method : Z:\VOASRV\HPCHEM1\MSVOA_U\METHOD\82U110218W.M
 Quant Title : SW846 8260
 QLast Update : Fri Nov 02 02:28:20 2018
 Response via : Initial Calibration

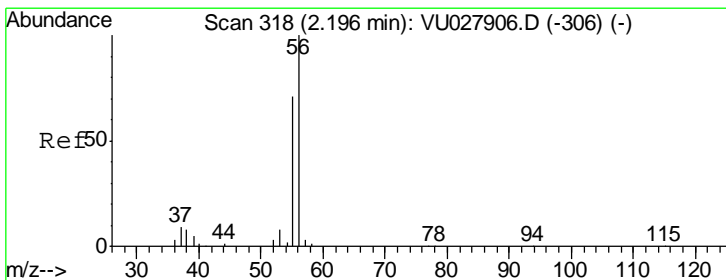
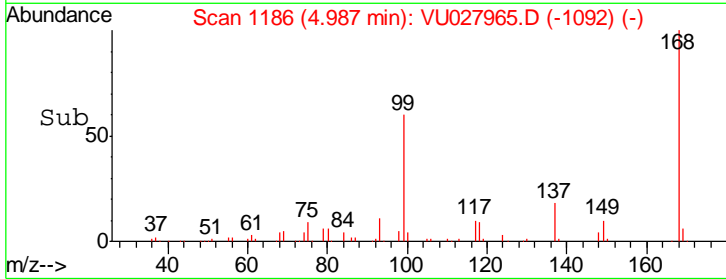
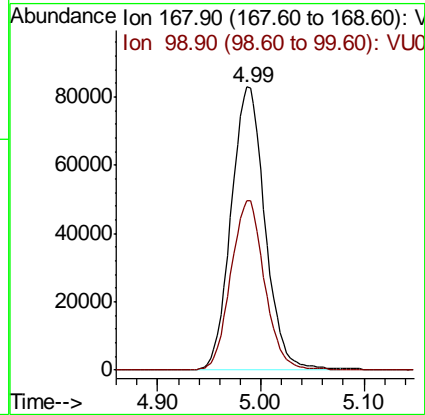
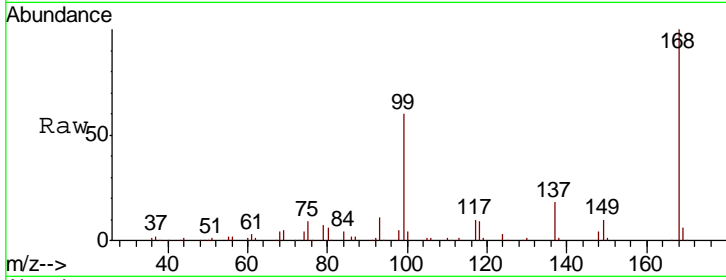




#1
 Pentafluorobenzene
 Concen: 50.000 ug/l
 RT: 4.99 min Scan# 1186
 Delta R.T. 0.00 min
 Lab File: VU027965.D
 Acq: 05 Nov 2018 18:14

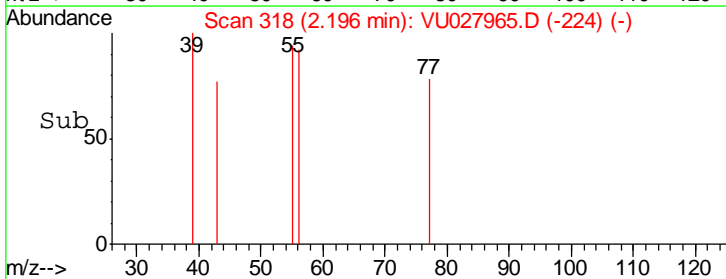
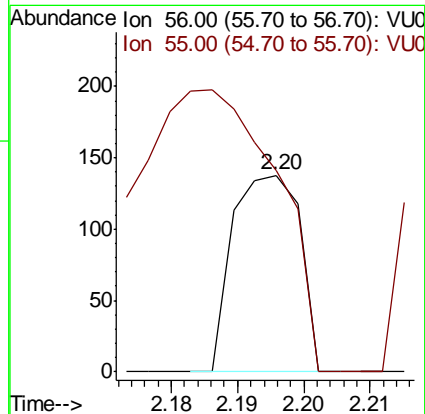
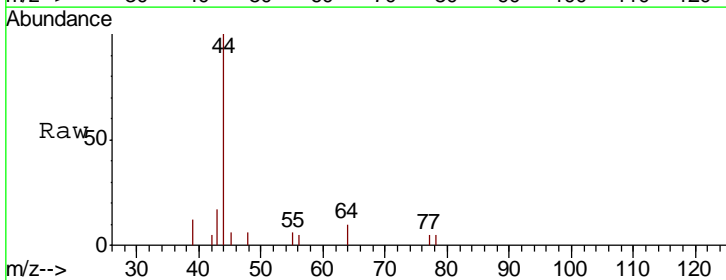
Instrument :
 MSVOA_U
 ClientSampled :
 OILY-GRAVEL

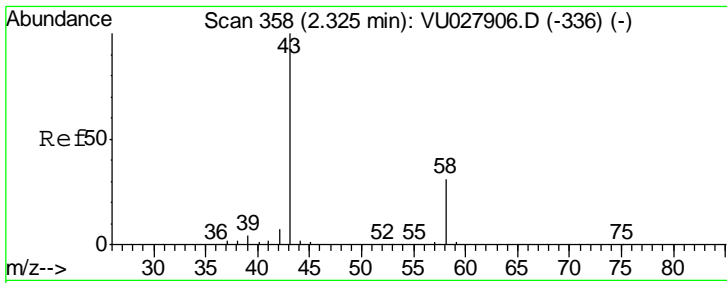
Tgt Ion	Resp	Lower	Upper
168	100		
99	59.8	47.9	71.9



#13
 Acrolein
 Concen: Below Cal
 RT: 2.20 min Scan# 318
 Delta R.T. 0.00 min
 Lab File: VU027965.D
 Acq: 05 Nov 2018 18:14

Tgt Ion	Resp	Lower	Upper
56	100		
55	310.3	56.2	84.4#

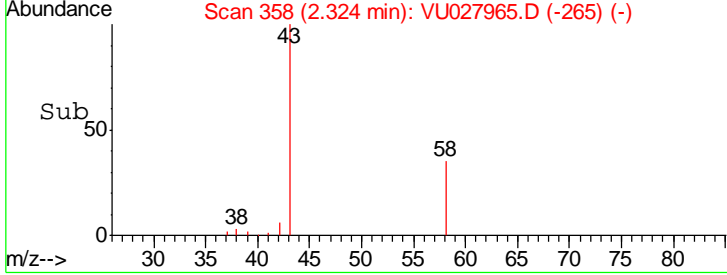
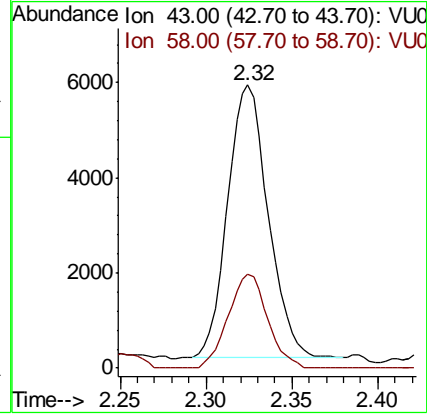
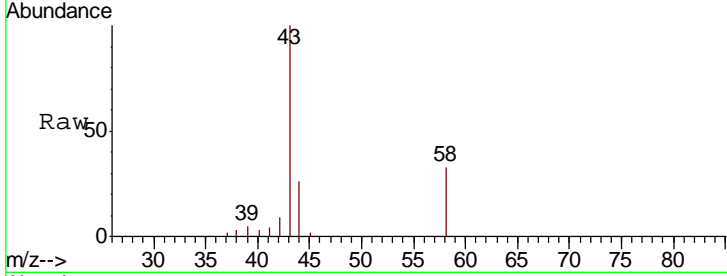




#16
 Acetone
 Concen: 5.411 ug/l
 RT: 2.32 min Scan# 358
 Delta R.T. -0.00 min
 Lab File: VU027965.D
 Acq: 05 Nov 2018 18:14

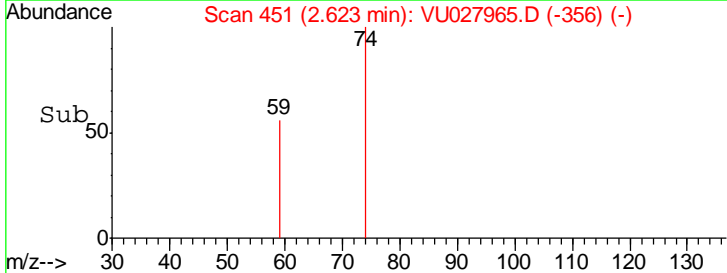
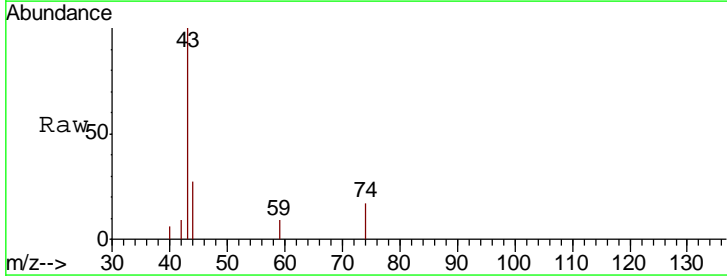
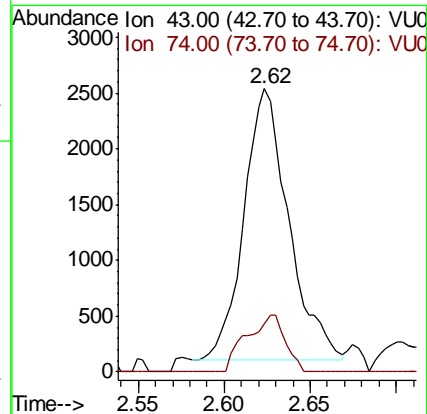
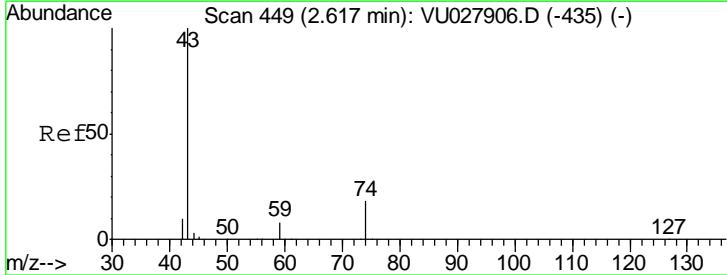
Instrument :
 MSVOA_U
ClientSampled :
 OILY-GRAVEL

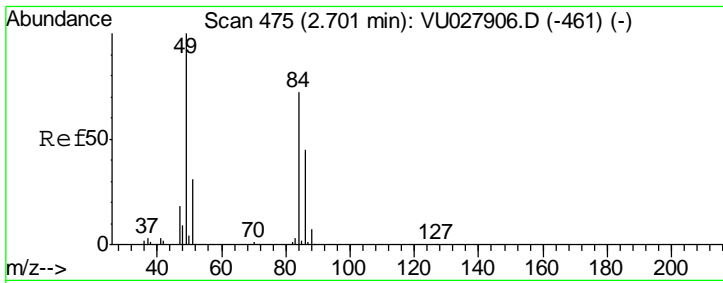
Tgt Ion	Resp	Lower	Upper
43	100		
58	34.4	24.6	37.0



#18
 Methyl Acetate
 Concen: 0.918 ug/l
 RT: 2.62 min Scan# 451
 Delta R.T. 0.01 min
 Lab File: VU027965.D
 Acq: 05 Nov 2018 18:14

Tgt Ion	Resp	Lower	Upper
43	100		
74	17.9	14.9	22.3

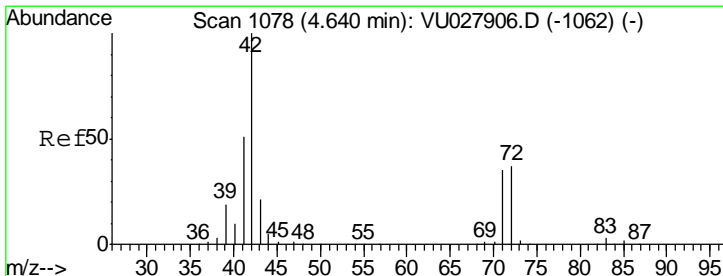
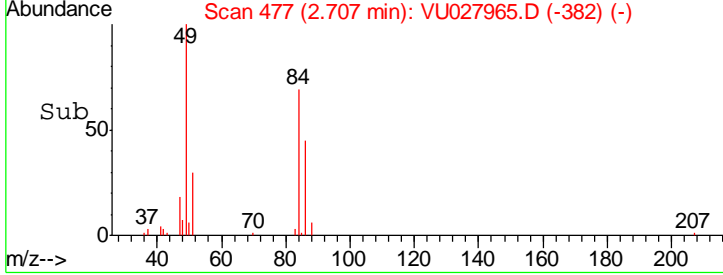
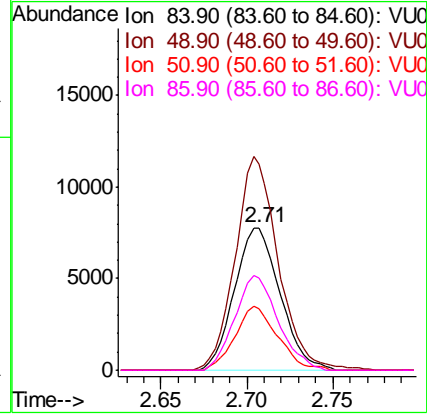
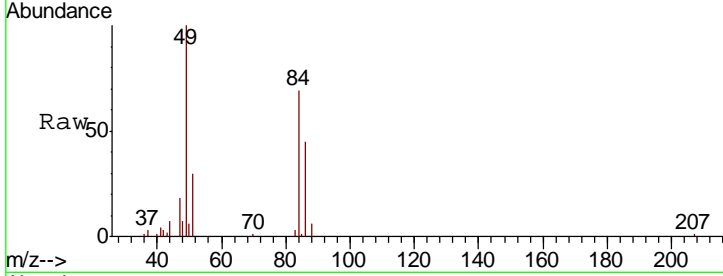




#20
 Methylene Chloride
 Concen: 5.605 ug/l
 RT: 2.71 min Scan# 477
 Delta R.T. 0.01 min
 Lab File: VU027965.D
 Acq: 05 Nov 2018 18:14

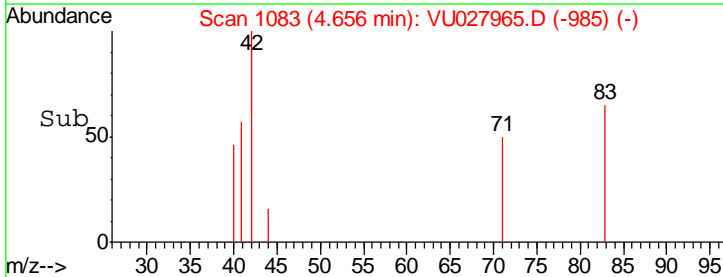
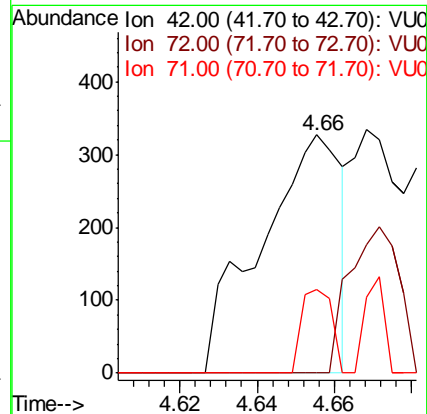
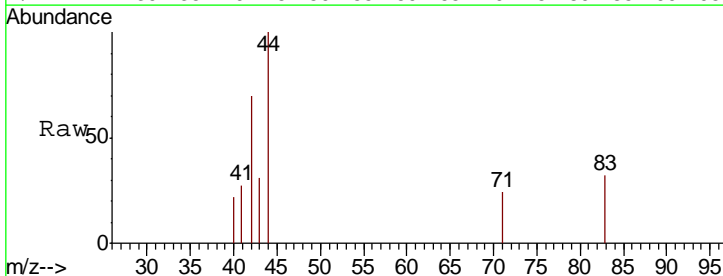
Instrument :
 MSVOA_U
ClientSampled :
 OILY-GRAVEL

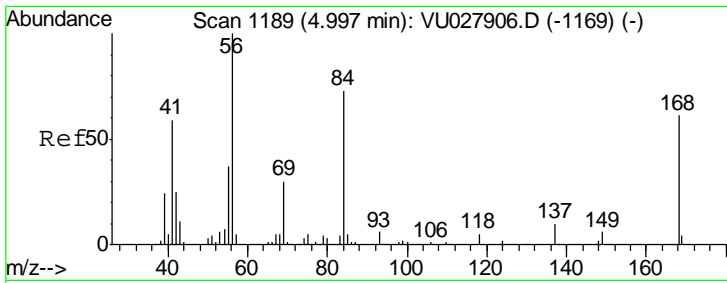
Tgt Ion	Resp	Lower	Upper
84	14317		
Ion Ratio			
84	100		
49	144.7	111.6	167.4
51	43.2	34.8	52.2
86	65.1	50.1	75.1



#29
 Tetrahydrofuran
 Concen: 0.255 ug/l
 RT: 4.66 min Scan# 1083
 Delta R.T. 0.02 min
 Lab File: VU027965.D
 Acq: 05 Nov 2018 18:14

Tgt Ion	Resp	Lower	Upper
42	474		
Ion Ratio			
42	100		
72	0.0	29.4	44.0#
71	13.3	27.9	41.9#

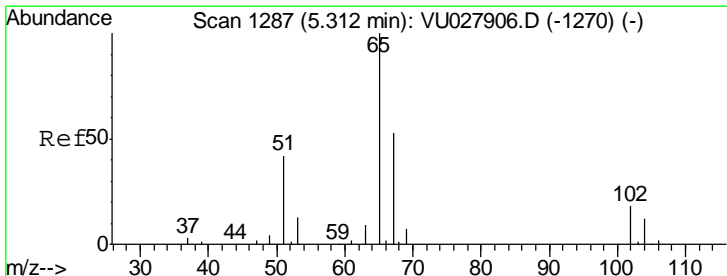
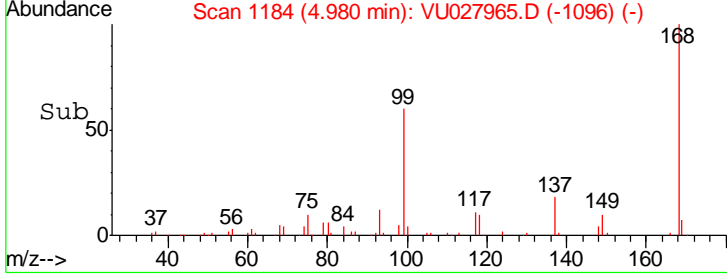
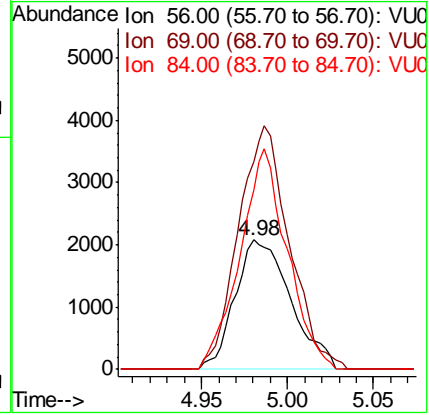
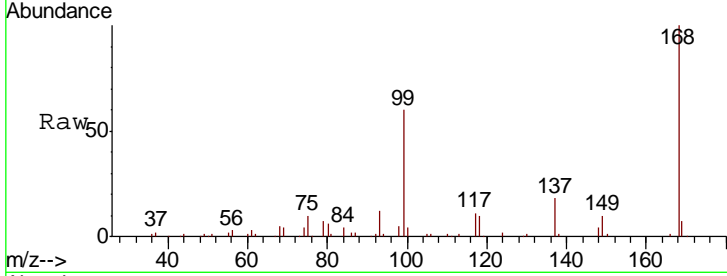




#31
 Cyclohexane
 Concen: Below Cal
 RT: 4.98 min Scan# 1184
 Delta R.T. -0.02 min
 Lab File: VU027965.D
 Acq: 05 Nov 2018 18:14

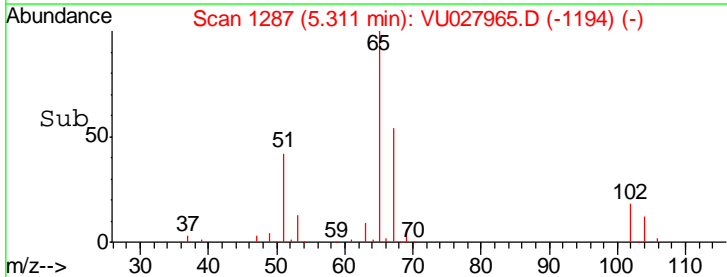
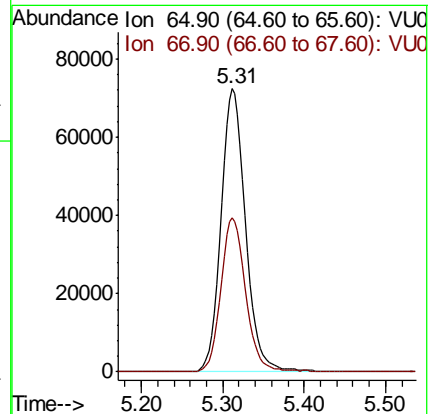
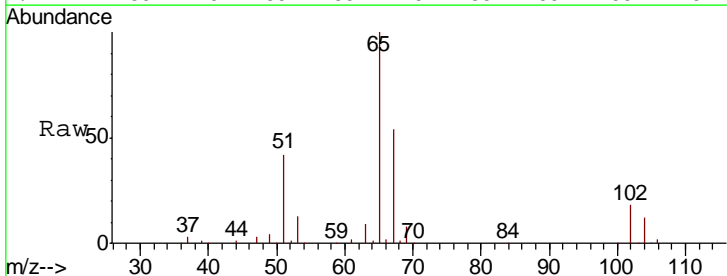
Instrument :
 MSVOA_U
 ClientSampled :
 OILY-GRAVEL

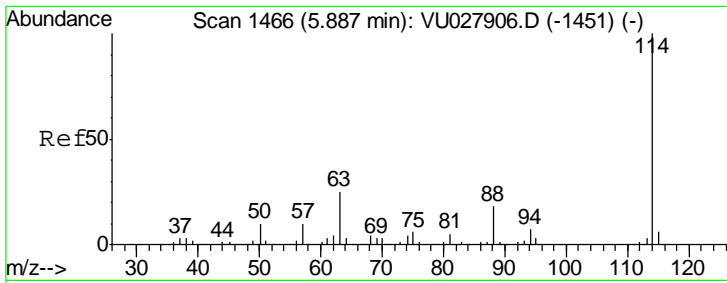
Tgt Ion	Resp	Lower	Upper
56	4666		
69	160.2	23.7	35.5#
84	138.3	58.2	87.4#



#33
 1,2-Dichloroethane-d4
 Concen: 54.628 ug/l
 RT: 5.31 min Scan# 1287
 Delta R.T. -0.00 min
 Lab File: VU027965.D
 Acq: 05 Nov 2018 18:14

Tgt Ion	Resp	Lower	Upper
65	154039		
67	54.8	0.0	109.0

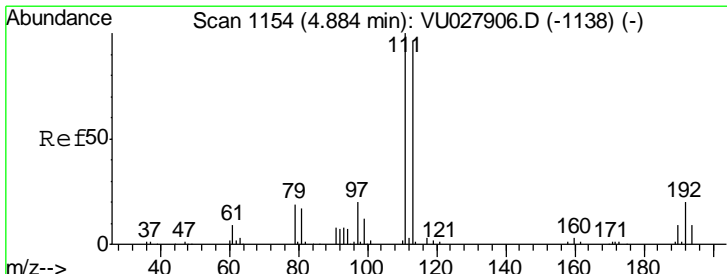
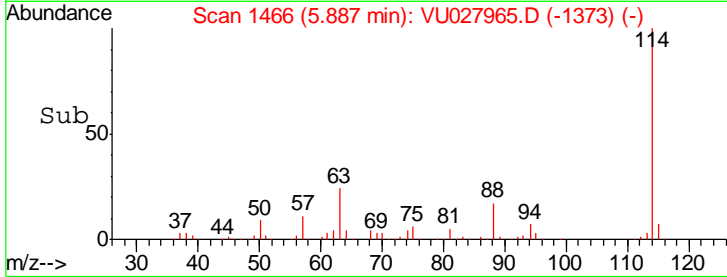
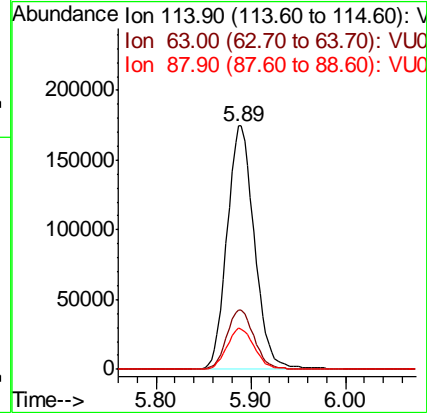
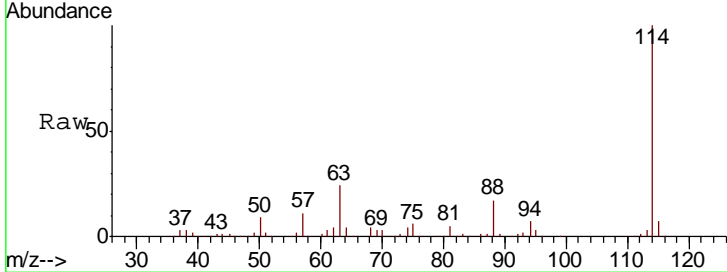




#34
 1,4-Difluorobenzene
 Concen: 50.000 ug/l
 RT: 5.89 min Scan# 1466
 Delta R.T. -0.00 min
 Lab File: VU027965.D
 Acq: 05 Nov 2018 18:14

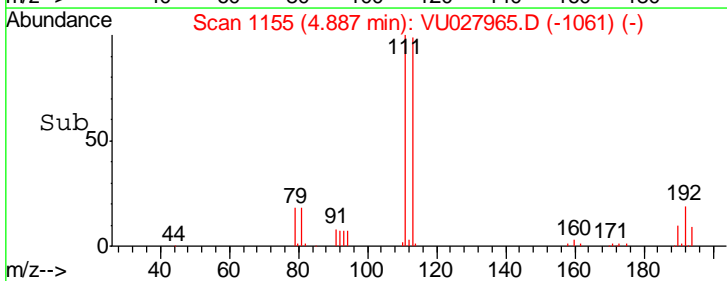
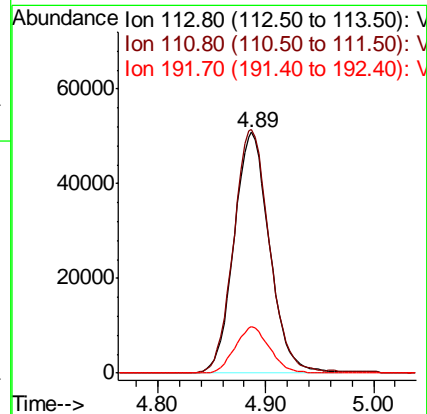
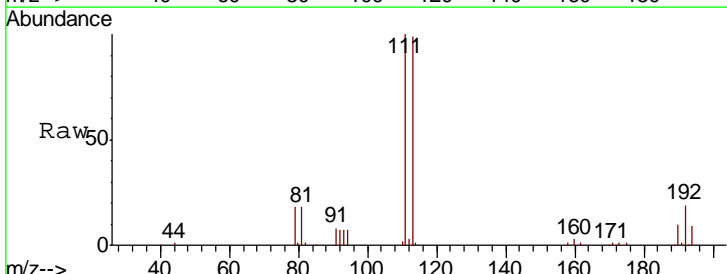
Instrument :
 MSVOA_U
 ClientSampleId :
 OILY-GRAVEL

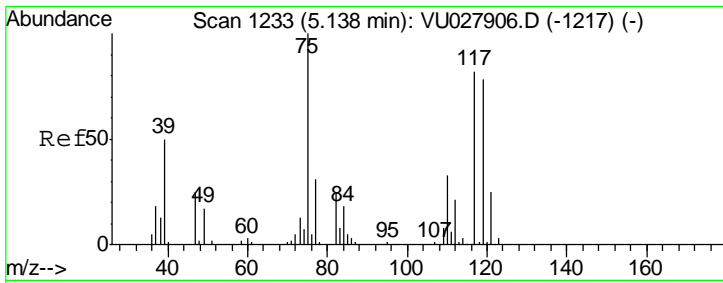
Tgt Ion	Resp	Lower	Upper
114	351243		
63	24.3	0.0	50.8
88	16.8	0.0	35.8



#35
 Dibromofluoromethane
 Concen: 52.498 ug/l
 RT: 4.89 min Scan# 1155
 Delta R.T. 0.00 min
 Lab File: VU027965.D
 Acq: 05 Nov 2018 18:14

Tgt Ion	Resp	Lower	Upper
113	116264		
111	101.8	83.0	124.6
192	18.8	15.6	23.4

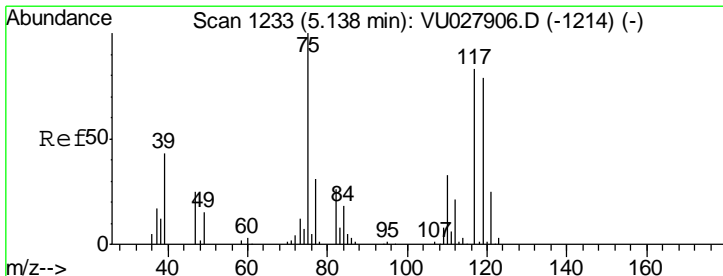
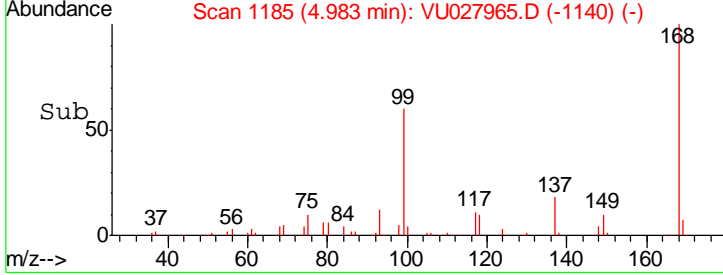
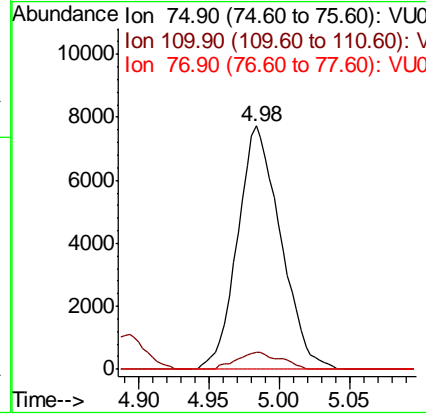
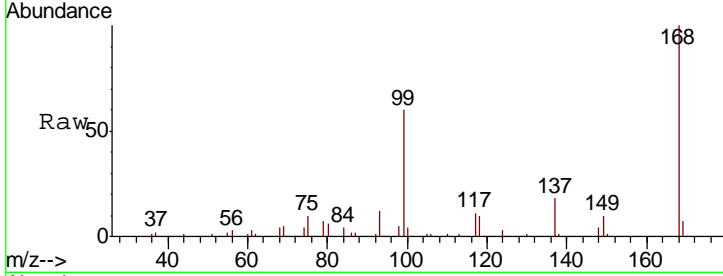




#36
 1,1-Dichloropropene
 Concen: 4.491 ug/l
 RT: 4.98 min Scan# 1185
 Delta R.T. -0.15 min
 Lab File: VU027965.D
 Acq: 05 Nov 2018 18:14

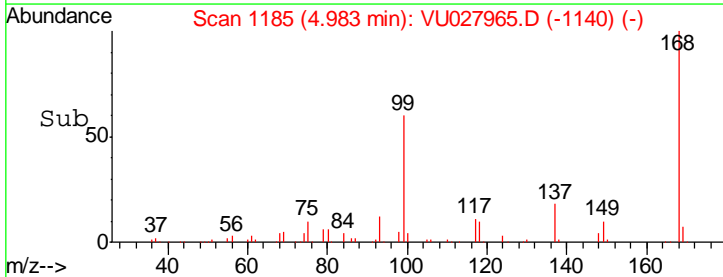
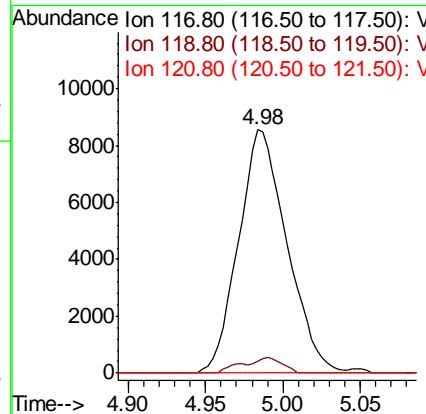
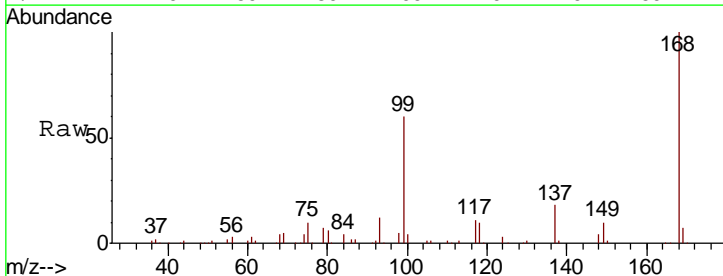
Instrument : MSVOA_U
 ClientSampled : OILY-GRAVEL

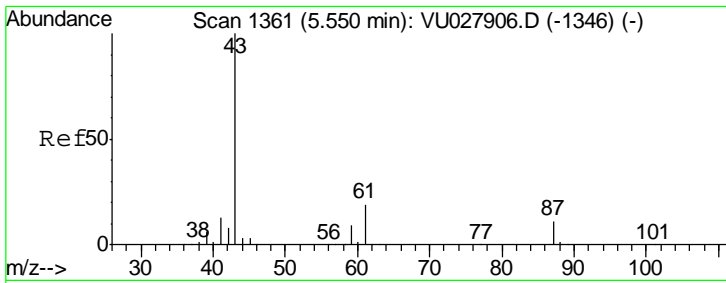
Tgt Ion	Resp	Lower	Upper
75	16520		
110	7.1	16.5	49.5#
77	0.0	24.9	37.3#



#38
 Carbon Tetrachloride
 Concen: 5.693 ug/l
 RT: 4.98 min Scan# 1185
 Delta R.T. -0.15 min
 Lab File: VU027965.D
 Acq: 05 Nov 2018 18:14

Tgt Ion	Resp	Lower	Upper
117	18559		
119	4.7	76.0	114.0#
121	0.0	24.5	36.7#

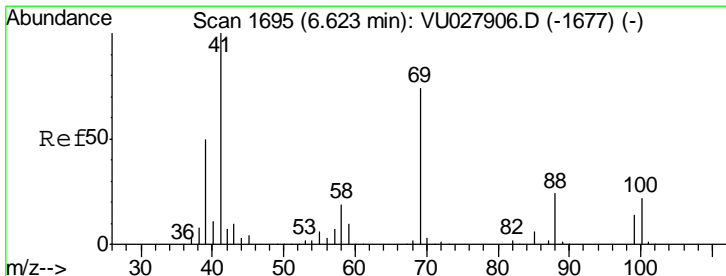
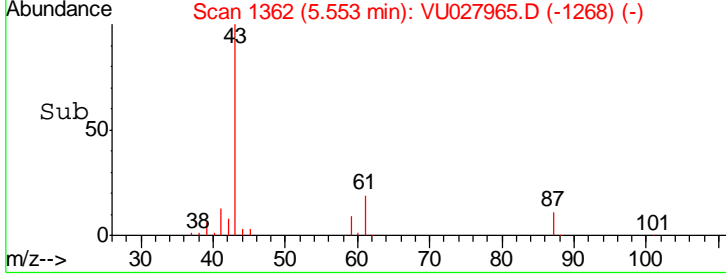
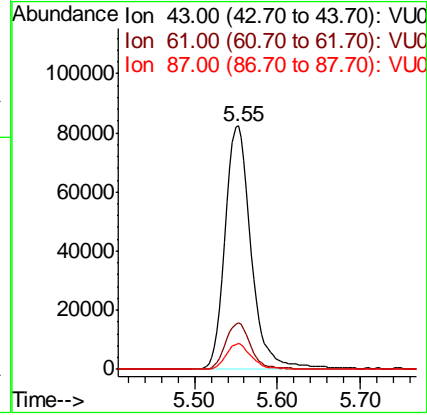
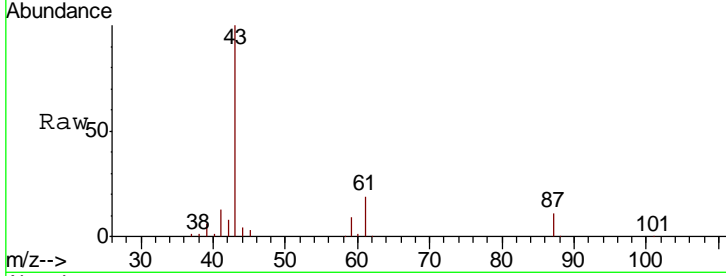




#43
 Isopropyl Acetate
 Concen: 21.271 ug/l
 RT: 5.55 min Scan# 1362
 Delta R.T. 0.00 min
 Lab File: VU027965.D
 Acq: 05 Nov 2018 18:14

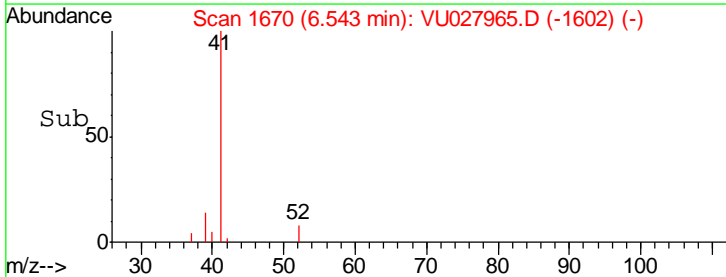
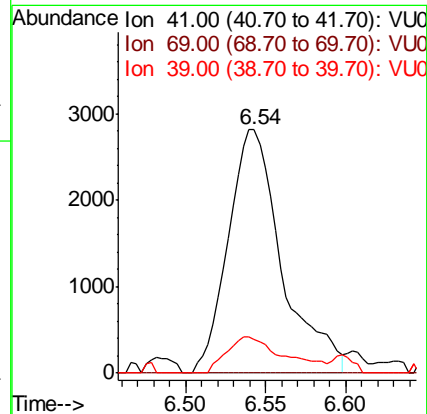
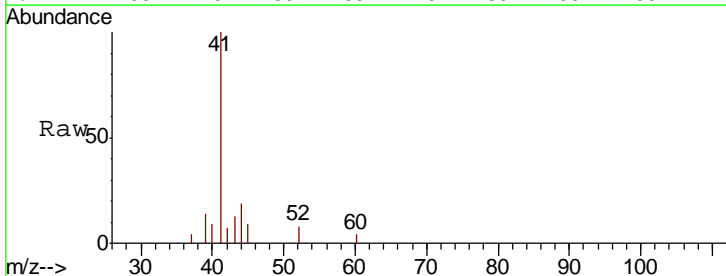
Instrument :
 MSVOA_U
 ClientSampled :
 OILY-GRAVEL

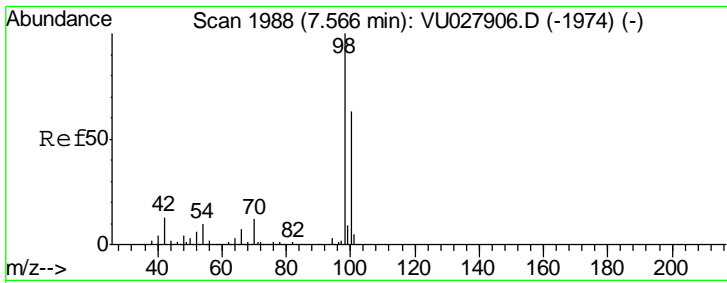
Tgt Ion	Resp	Lower	Upper
43	179630		
61	18.6	15.0	22.4
87	10.4	8.6	12.8



#48
 Methyl methacrylate
 Concen: 1.565 ug/l
 RT: 6.54 min Scan# 1670
 Delta R.T. -0.08 min
 Lab File: VU027965.D
 Acq: 05 Nov 2018 18:14

Tgt Ion	Resp	Lower	Upper
41	6476		
69	0.0	59.8	89.8#
39	16.2	40.0	60.0#

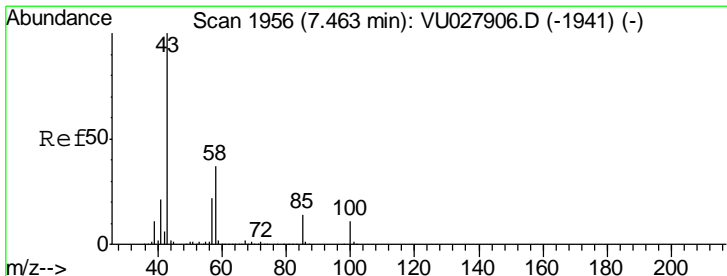
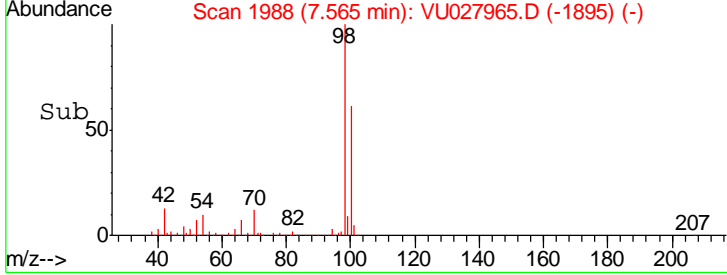
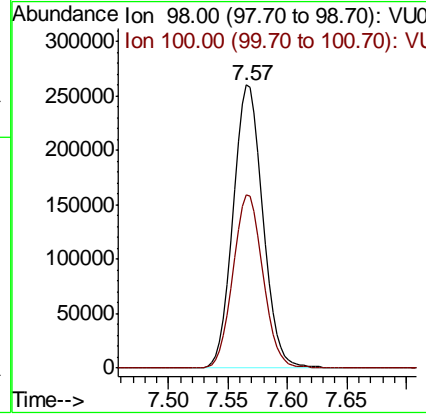
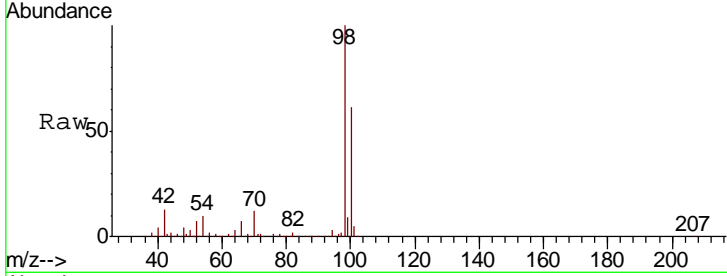




#50
 Toluene-d8
 Concen: 52.687 ug/l
 RT: 7.57 min Scan# 1988
 Delta R.T. -0.00 min
 Lab File: VU027965.D
 Acq: 05 Nov 2018 18:14

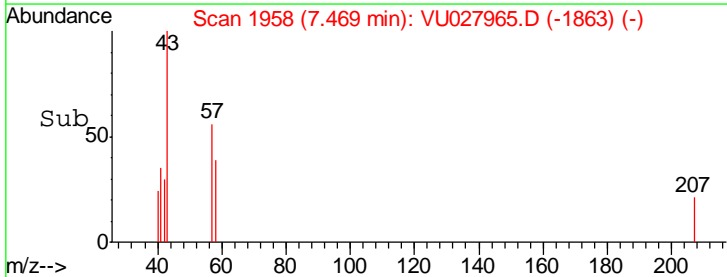
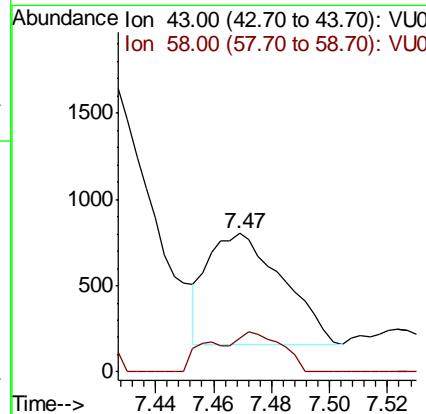
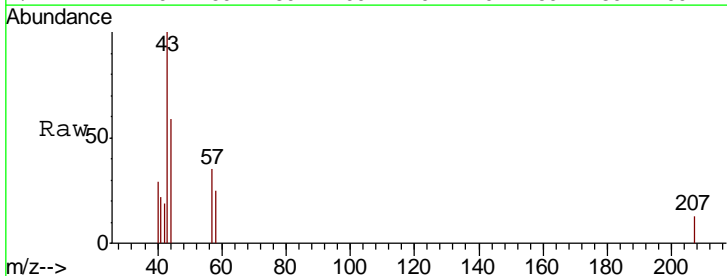
Instrument : MSVOA_U
 ClientSampled : OILY-GRAVEL

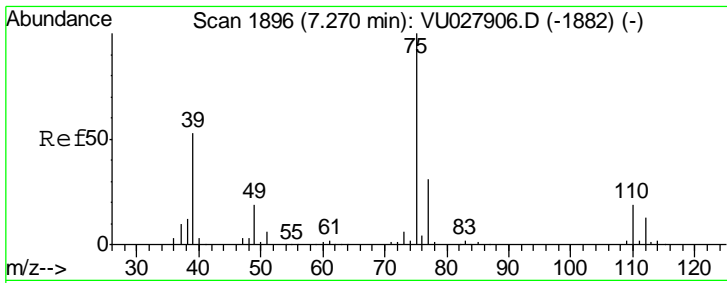
Tgt Ion: 98 Resp: 450739
 Ion Ratio Lower Upper
 98 100
 100 61.9 50.1 75.1



#51
 4-Methyl-2-Pentanone
 Concen: 0.204 ug/l
 RT: 7.47 min Scan# 1958
 Delta R.T. 0.01 min
 Lab File: VU027965.D
 Acq: 05 Nov 2018 18:14

Tgt Ion: 43 Resp: 1151
 Ion Ratio Lower Upper
 43 100
 58 23.5 29.5 44.3#

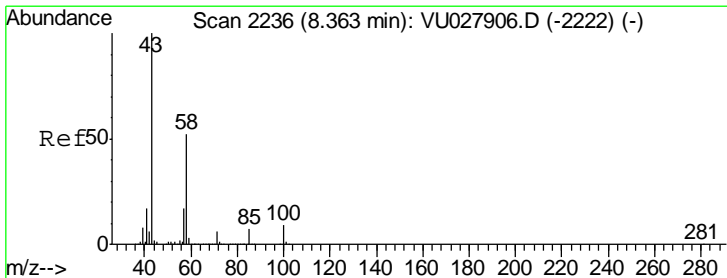
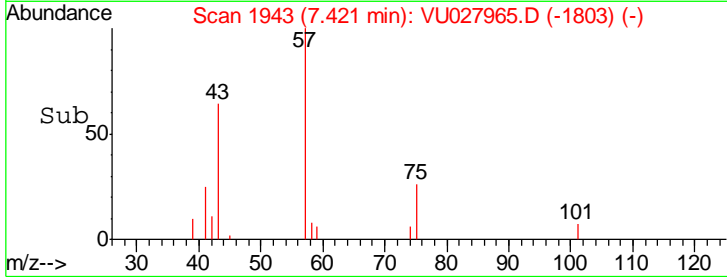
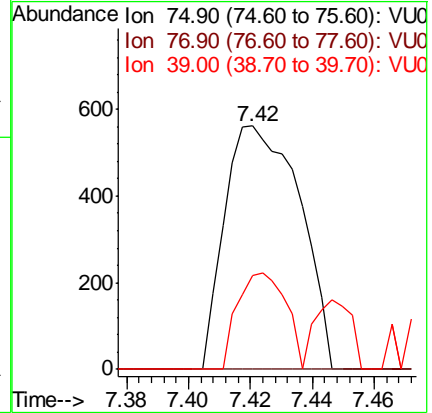
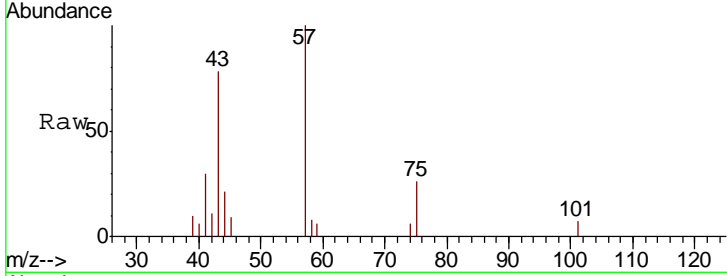




#54
 cis-1,3-Dichloropropene
 Concen: 0.214 ug/l
 RT: 7.42 min Scan# 1943
 Delta R.T. 0.15 min
 Lab File: VU027965.D
 Acq: 05 Nov 2018 18:14

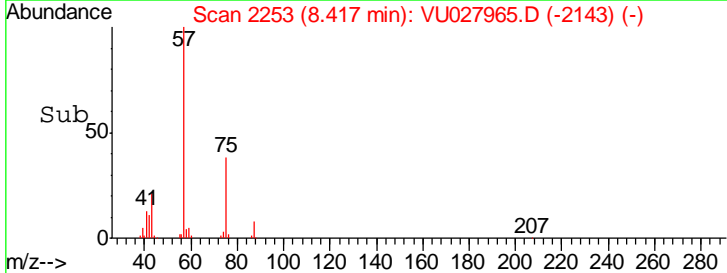
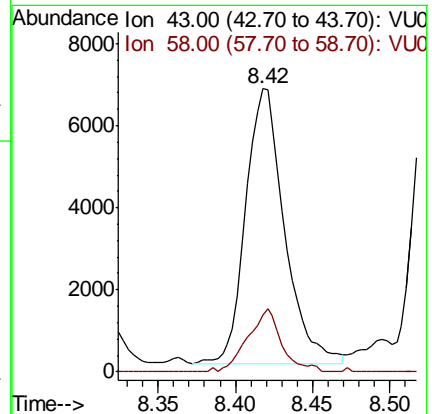
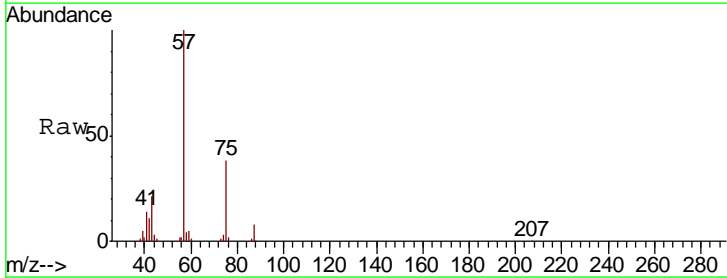
Instrument :
 MSVOA_U
 ClientSampled :
 OILY-GRAVEL

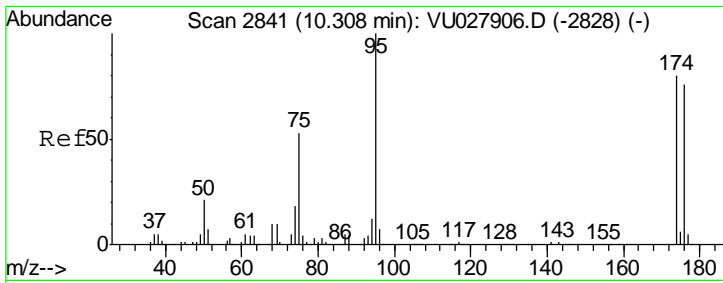
Tgt Ion	Resp	Lower	Upper
75	100		
77	0.0	24.6	37.0#
39	38.6	42.6	64.0#



#59
 2-Hexanone
 Concen: 2.695 ug/l
 RT: 8.42 min Scan# 2253
 Delta R.T. 0.05 min
 Lab File: VU027965.D
 Acq: 05 Nov 2018 18:14

Tgt Ion	Resp	Lower	Upper
43	100		
58	20.0	25.8	77.3#

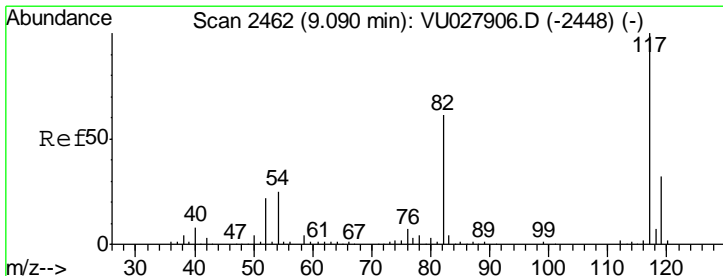
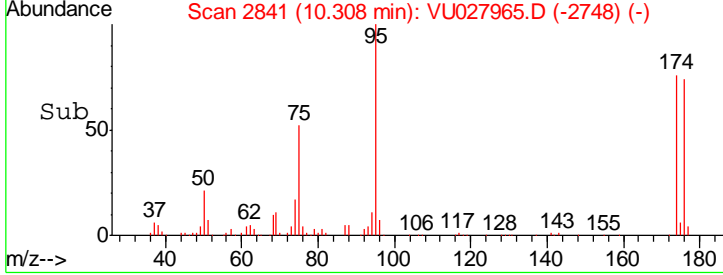
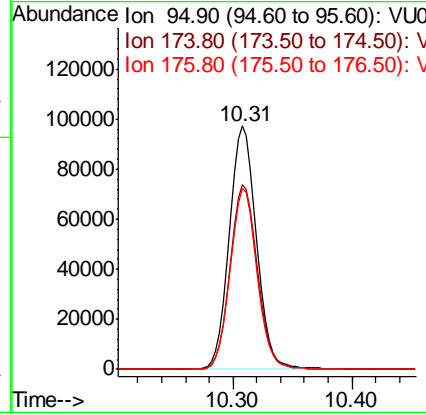
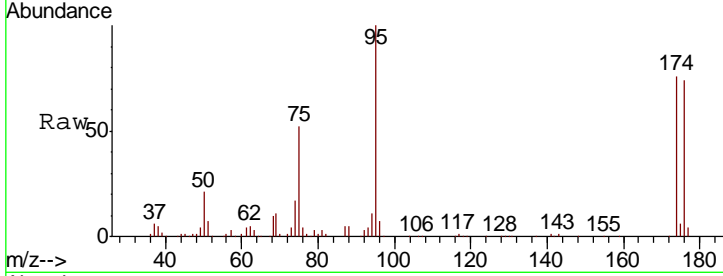




#62
 4-Bromofluorobenzene
 Concen: 48.806 ug/l
 RT: 10.31 min Scan# 2841
 Delta R.T. -0.00 min
 Lab File: VU027965.D
 Acq: 05 Nov 2018 18:14

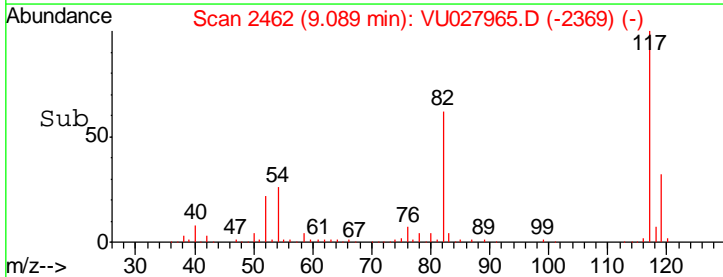
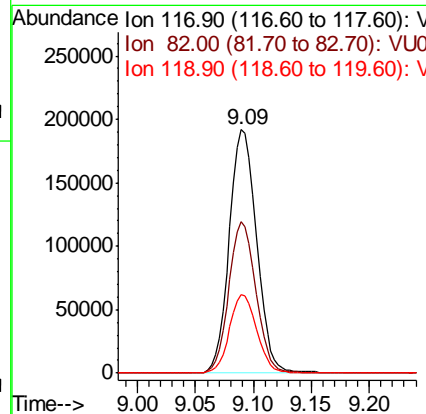
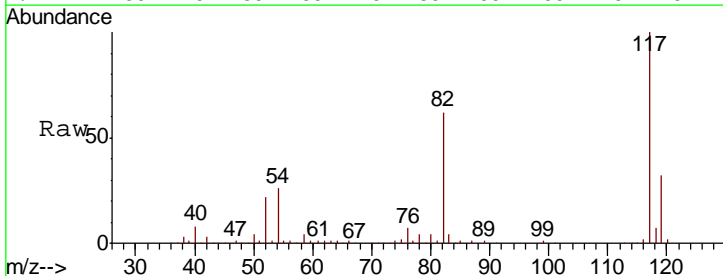
Instrument : MSVOA_U
 ClientSampled : OILY-GRAVEL

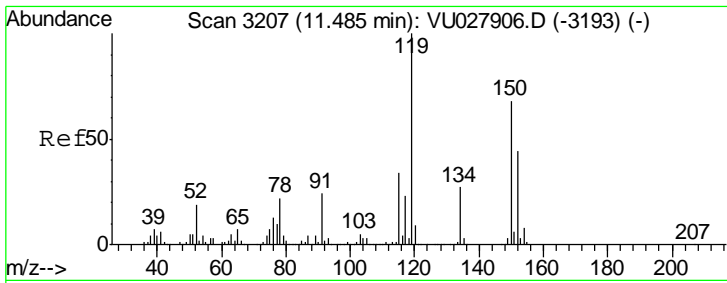
Tgt Ion	Resp	Lower	Upper
95	154004		
174	76.4	0.0	156.4
176	74.0	0.0	150.8



#63
 Chlorobenzene-d5
 Concen: 50.000 ug/l
 RT: 9.09 min Scan# 2462
 Delta R.T. -0.00 min
 Lab File: VU027965.D
 Acq: 05 Nov 2018 18:14

Tgt Ion	Resp	Lower	Upper
117	315184		
82	62.0	48.6	73.0
119	32.4	25.8	38.8

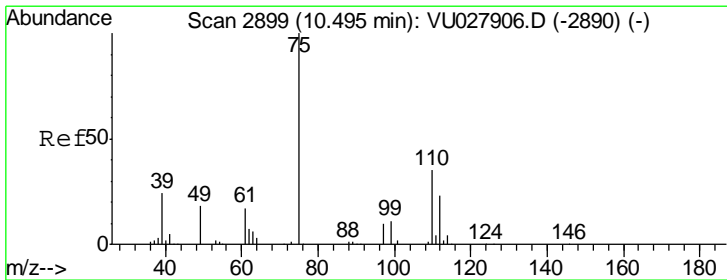
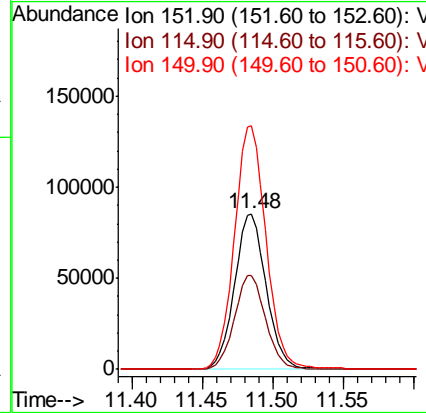
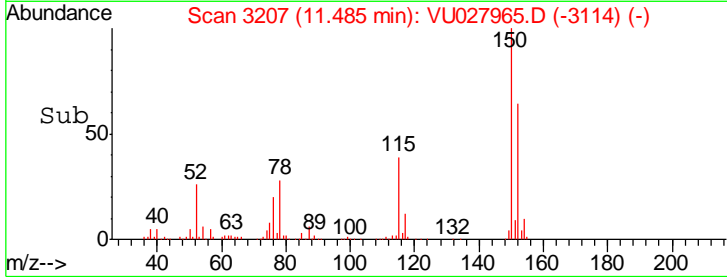
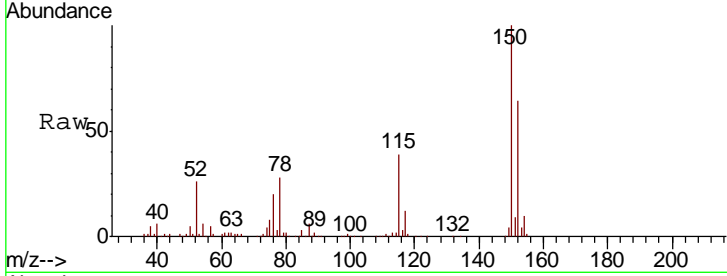




#72
 1,4-Dichlorobenzene-d4
 Concen: 50.000 ug/l
 RT: 11.48 min Scan# 3207
 Delta R.T. -0.00 min
 Lab File: VU027965.D
 Acq: 05 Nov 2018 18:14

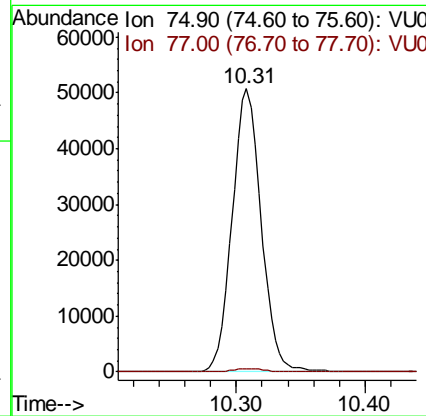
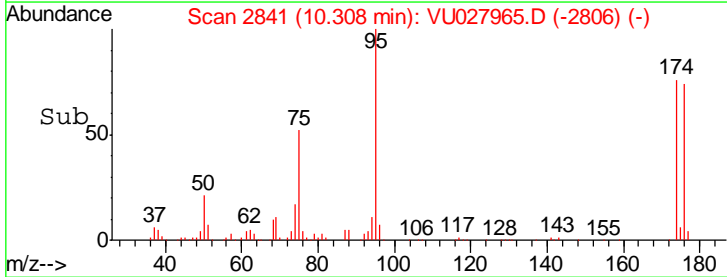
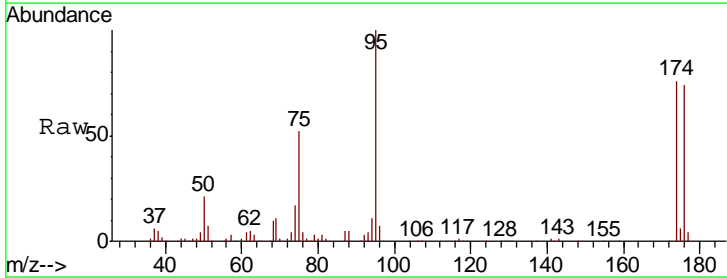
Instrument : MSVOA_U
 ClientSampled : OILY-GRAVEL

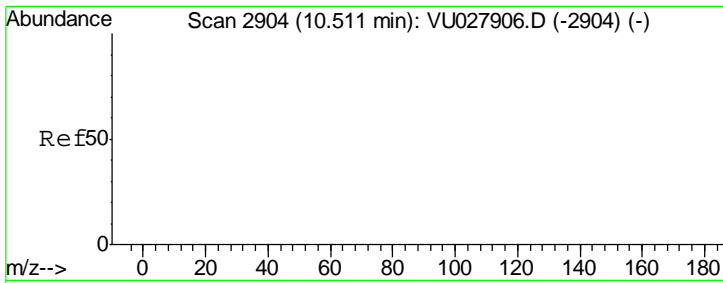
Tgt Ion	Resp	Lower	Upper
152	100		
115	60.0	43.0	129.0
150	157.0	0.0	349.4



#76
 1,2,3-Trichloropropane
 Concen: 21.638 ug/l
 RT: 10.31 min Scan# 2841
 Delta R.T. -0.19 min
 Lab File: VU027965.D
 Acq: 05 Nov 2018 18:14

Tgt Ion	Resp	Lower	Upper
75	100		
77	1.2	21.6	64.6#

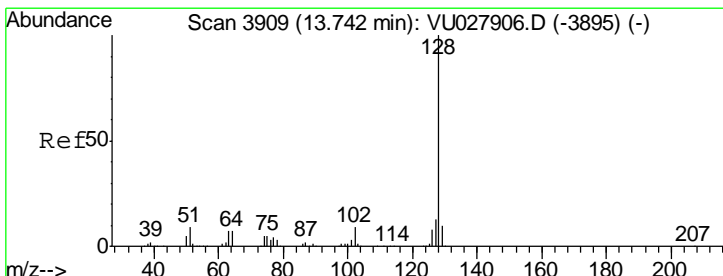
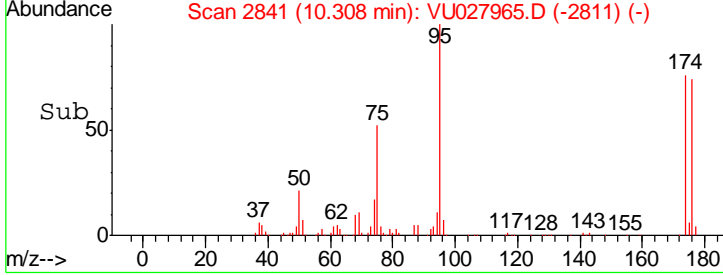
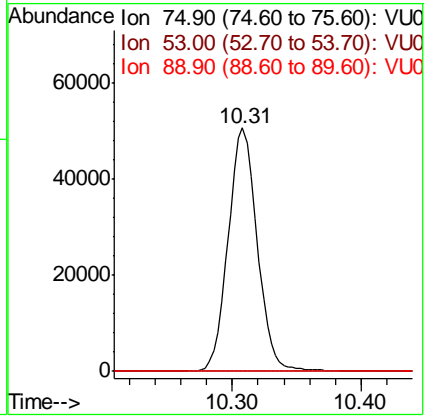
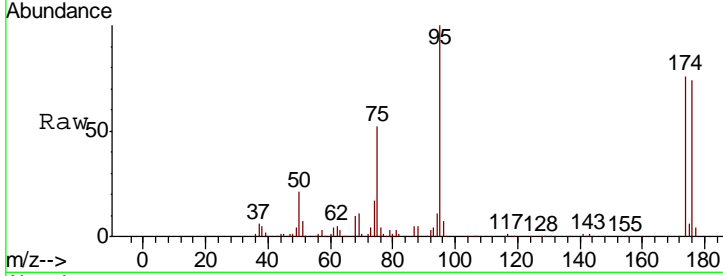




#81
 trans-1,4-Dichloro-2-butene
 Concen: 54.005 ug/l
 RT: 10.31 min Scan# 2841
 Delta R.T. -0.20 min
 Lab File: VU027965.D
 Acq: 05 Nov 2018 18:14

Instrument : MSVOA_U
 ClientSampled : OILY-GRAVEL

Tgt Ion	Resp	Lower	Upper
75	100		
53	0.0	0.0	0.0
89	0.0	0.0	0.0



#95
 Naphthalene
 Concen: 1.617 ug/l
 RT: 13.75 min Scan# 3910
 Delta R.T. 0.00 min
 Lab File: VU027965.D
 Acq: 05 Nov 2018 18:14

Tgt Ion	Resp	Lower	Upper
128	100		
127	14.2	10.4	15.6
129	10.1	8.3	12.5

