

Data Path : Z:\VOASRV\HPCHEM1\MSVOA U\DATA\VU110519\
 Data File : VU035620.D
 Acq On : 05 Nov 2019 11:11
 Operator : JC/SP
 Sample : K5679-07
 Misc : 5.0mL/MSVOA U/WATER
 ALS Vial : 6 Sample Multiplier: 1

Instrument :
 MSVOA_U
 ClientSampleId :
 C0CN1

Quant Time: Nov 06 03:06:17 2019
 Quant Method : Z:\VOASRV\HPCHEM1\MSVOA_U\METHOD\SOMULM103119WMA.M
 Quant Title : VOC Analysis
 QLast Update : Wed Nov 06 03:03:41 2019
 Response via : Initial Calibration

Internal Standards	R.T.	QIon	Response	Conc	Units	Dev(Min)
1) 1,4-Difluorobenzene	6.29	114	647703	50.00	ug/L	0.00
28) Chlorobenzene-d5	9.45	117	605979	50.00	ug/L	0.00
60) 1,4-Dichlorobenzene-d4	11.84	152	164097	50.00	ug/L	0.00

System Monitoring Compounds

4) Vinyl Chloride-d3	1.62	65	194287	37.14	ug/L	0.00
Spiked Amount	50.000	Range	60 - 135	Recovery	=	74.28%
7) Chloroethane-d5	1.93	69	174903	41.86	ug/L	0.00
Spiked Amount	50.000	Range	70 - 130	Recovery	=	83.72%
11) 1,1-Dichloroethene-d2	2.60	63	254184	31.24	ug/L	0.00
Spiked Amount	50.000	Range	60 - 125	Recovery	=	62.48%
21) 2-Butanone-d5	4.69	46	276805	90.58	ug/L	0.00
Spiked Amount	100.000	Range	40 - 130	Recovery	=	90.58%
24) Chloroform-d	5.11	84	372103	46.06	ug/L	0.00
Spiked Amount	50.000	Range	70 - 125	Recovery	=	92.12%
26) 1,2-Dichloroethane-d4	5.75	65	229246	46.32	ug/L	0.00
Spiked Amount	50.000	Range	70 - 125	Recovery	=	92.64%
32) Benzene-d6	5.77	84	780767	49.43	ug/L	0.00
Spiked Amount	50.000	Range	70 - 125	Recovery	=	98.86%
36) 1,2-Dichloropropane-d6	6.74	67	254791	49.74	ug/L	0.00
Spiked Amount	50.000	Range	70 - 120	Recovery	=	99.48%
41) Toluene-d8	7.93	98	703705	47.23	ug/L	0.00
Spiked Amount	50.000	Range	80 - 120	Recovery	=	94.46%
43) trans-1,3-Dichloropropene-	8.22	79	115958	49.14	ug/L	0.00
Spiked Amount	50.000	Range	60 - 125	Recovery	=	98.28%
47) 2-Hexanone-d5	8.68	63	172418	87.82	ug/L	0.00
Spiked Amount	100.000	Range	45 - 130	Recovery	=	87.82%
57) 1,1,2,2-Tetrachloroethane-	10.79	84	334693	45.95	ug/L	0.00
Spiked Amount	50.000	Range	65 - 120	Recovery	=	91.90%
64) 1,2-Dichlorobenzene-d4	12.22	152	174241	52.64	ug/L	0.00
Spiked Amount	50.000	Range	80 - 120	Recovery	=	105.28%

Target Compounds

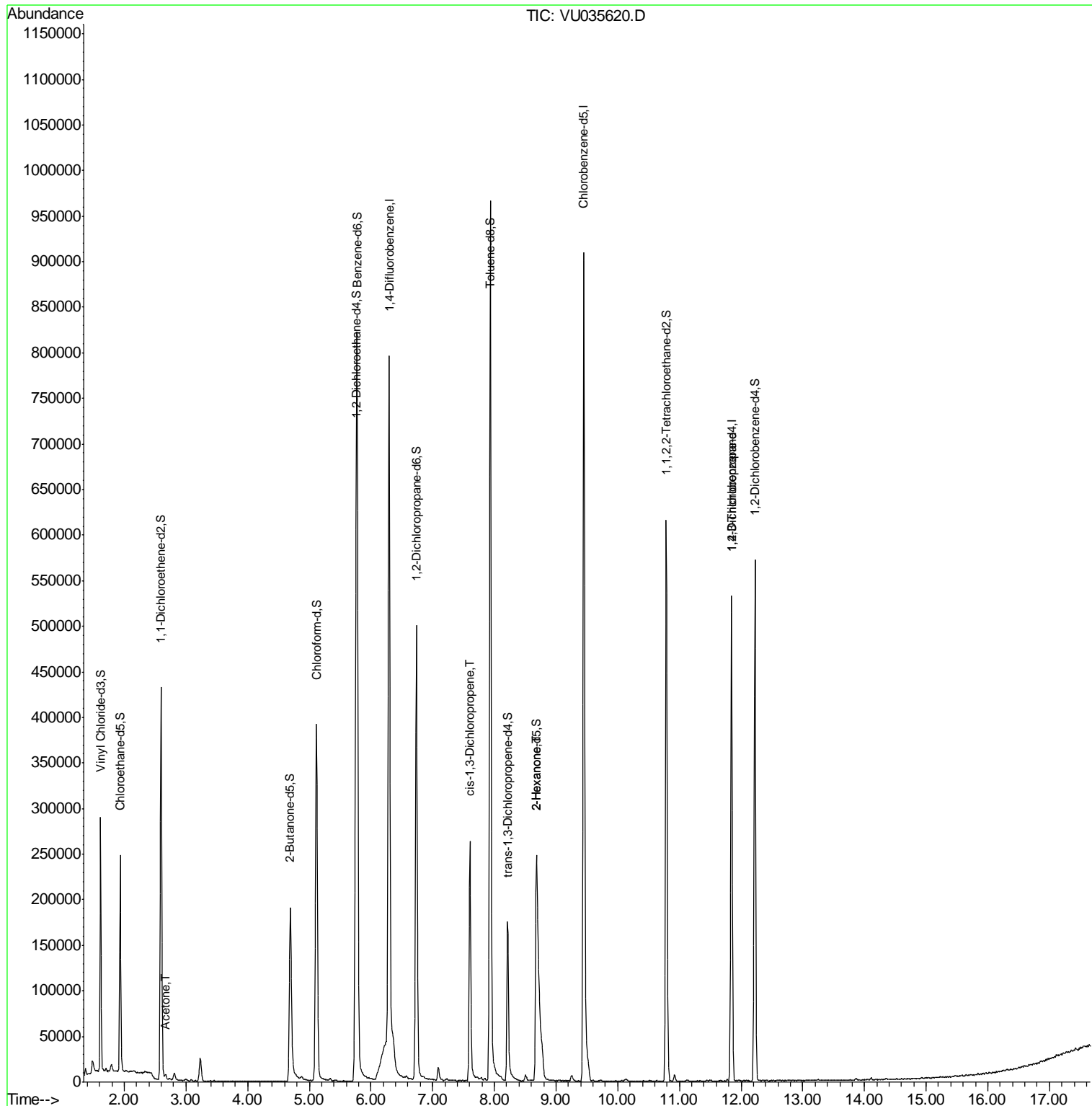
Target Compounds	R.T.	QIon	Response	Conc	Units	Ovalue
13) Acetone	2.67	43	4542	1.689	ug/L	97
39) cis-1,3-Dichloropropene	7.60	75	6502	0.959	ug/L #	43
48) 2-Hexanone	8.68	43	15490	3.122	ug/L #	64
59) 1,2,3-Trichloropropane	11.84	75	19232	3.234	ug/L	95

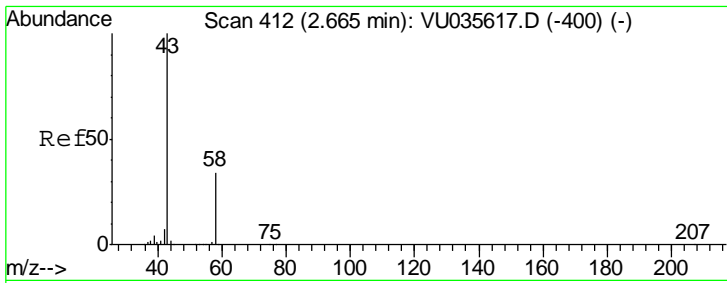
(#) = qualifier out of range (m) = manual integration (+) = signals summed

Data Path : Z:\VOASRV\HPCHEM1\MSVOA U\DATA\VU110519\
 Data File : VU035620.D
 Acq On : 05 Nov 2019 11:11
 Operator : JC/SP
 Sample : K5679-07
 Misc : 5.0mL/MSVOA U/WATER
 ALS Vial : 6 Sample Multiplier: 1

Instrument :
 MSVOA_U
 ClientSampled :
 C0CN1

Quant Time: Nov 06 03:06:17 2019
 Quant Method : Z:\VOASRV\HPCHEM1\MSVOA_U\METHOD\SOMULM103119WMA.M
 Quant Title : VOC Analysis
 QLast Update : Wed Nov 06 03:03:41 2019
 Response via : Initial Calibration

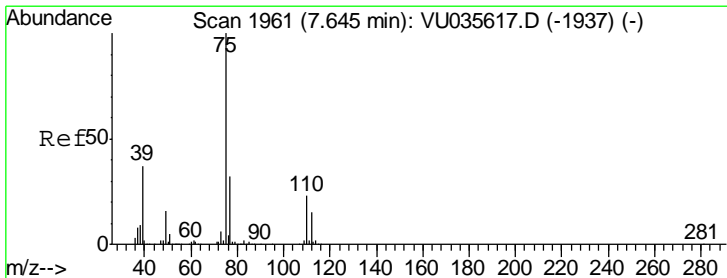
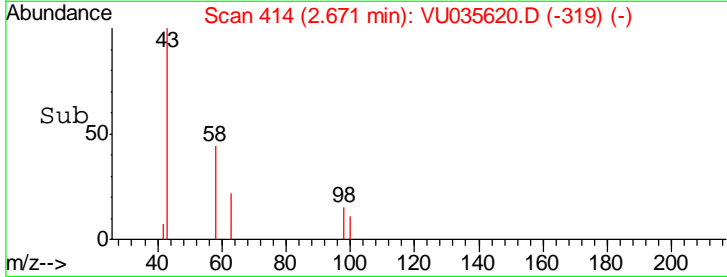
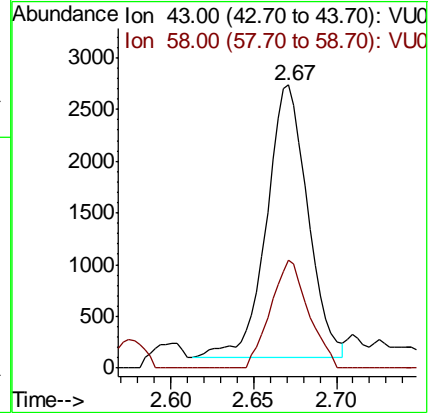
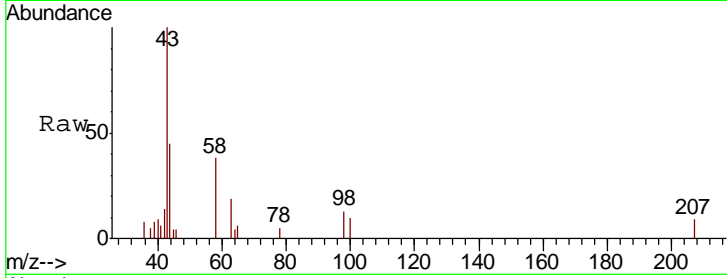




#13
 Acetone
 Concen: 1.689 ug/L
 RT: 2.67 min Scan# 414
 Delta R.T. 0.01 min
 Lab File: VU035620.D
 Acq: 05 Nov 2019 11:11

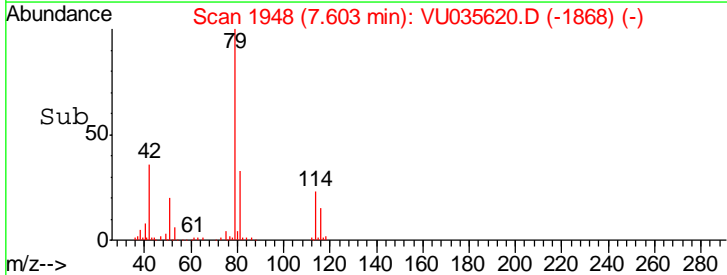
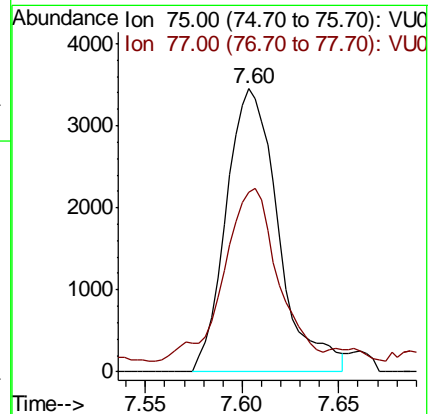
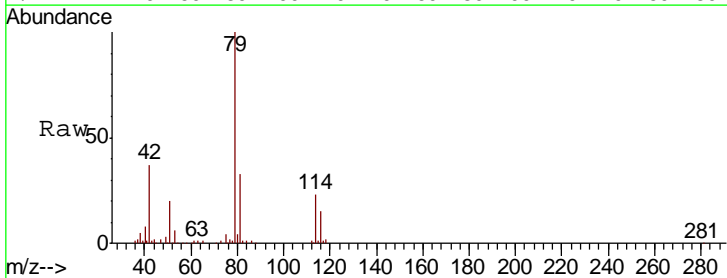
Instrument :
 MSVOA_U
 ClientSampled :
 C0CN1

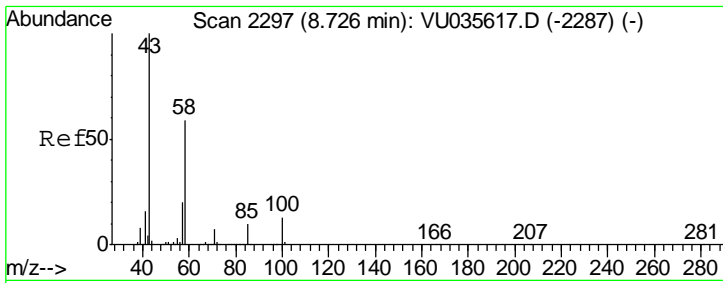
Tgt Ion: 43 Resp: 4542
 Ion Ratio Lower Upper
 43 100
 58 36.6 0.0 70.0



#39
 cis-1,3-Dichloropropene
 Concen: 0.959 ug/L
 RT: 7.60 min Scan# 1948
 Delta R.T. -0.04 min
 Lab File: VU035620.D
 Acq: 05 Nov 2019 11:11

Tgt Ion: 75 Resp: 6502
 Ion Ratio Lower Upper
 75 100
 77 63.6 22.3 41.5#

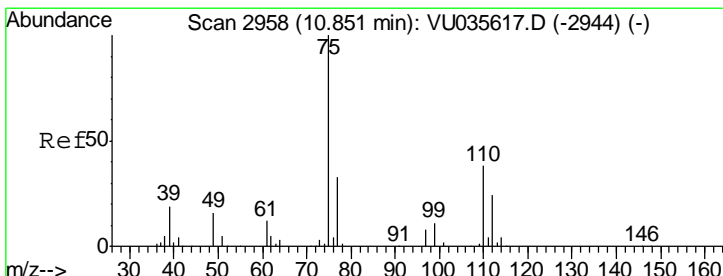
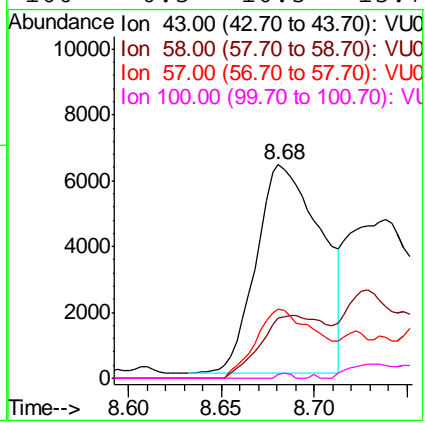
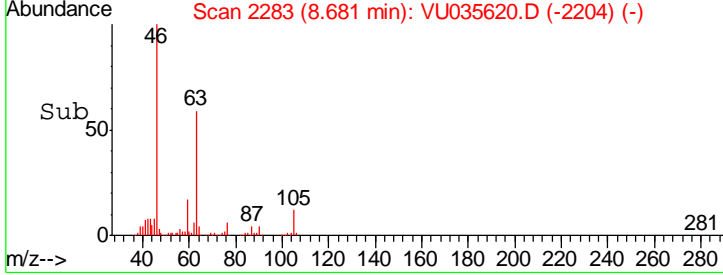
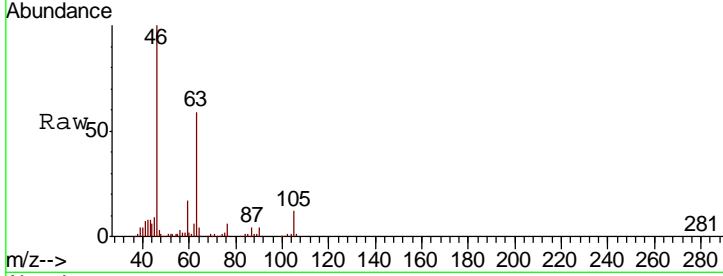




#48
 2-Hexanone
 Concen: 3.122 ug/L
 RT: 8.68 min Scan# 2283
 Delta R.T. -0.05 min
 Lab File: VU035620.D
 Acq: 05 Nov 2019 11:11

Instrument : MSVOA_U
 ClientSampled : COCN1

Tgt Ion	Resp	Lower	Upper
43	15490		
58	30.1	50.4	75.6#
57	31.7	17.4	26.0#
100	0.5	10.5	15.7#



#59
 1,2,3-Trichloropropane
 Concen: 3.234 ug/L
 RT: 11.84 min Scan# 3267
 Delta R.T. 0.99 min
 Lab File: VU035620.D
 Acq: 05 Nov 2019 11:11

Tgt Ion	Resp	Lower	Upper
75	19232		
77	35.0	25.7	38.5

