

Data Path : Z:\voasrv\HPCHEM1\MSVOA_U\Data\VU110723\
 Data File : VU056096.D
 Acq On : 07 Nov 2023 14:08
 Operator : MD/SY
 Sample : VU1107WBL01
 Misc : 25.0mL/MSVOA_U/WATER
 ALS Vial : 1 Sample Multiplier: 1

Instrument :
 MSVOA_U
 ClientSampleId :

Quant Time: Nov 08 00:38:52 2023
 Quant Method : Z:\voasrv\HPCHEM1\MSVOA_U\Method\SFAMUTR110723WMA.M
 Quant Title : TRACE VOA SFAM1.0
 QLast Update : Wed Nov 08 00:38:11 2023
 Response via : Initial Calibration

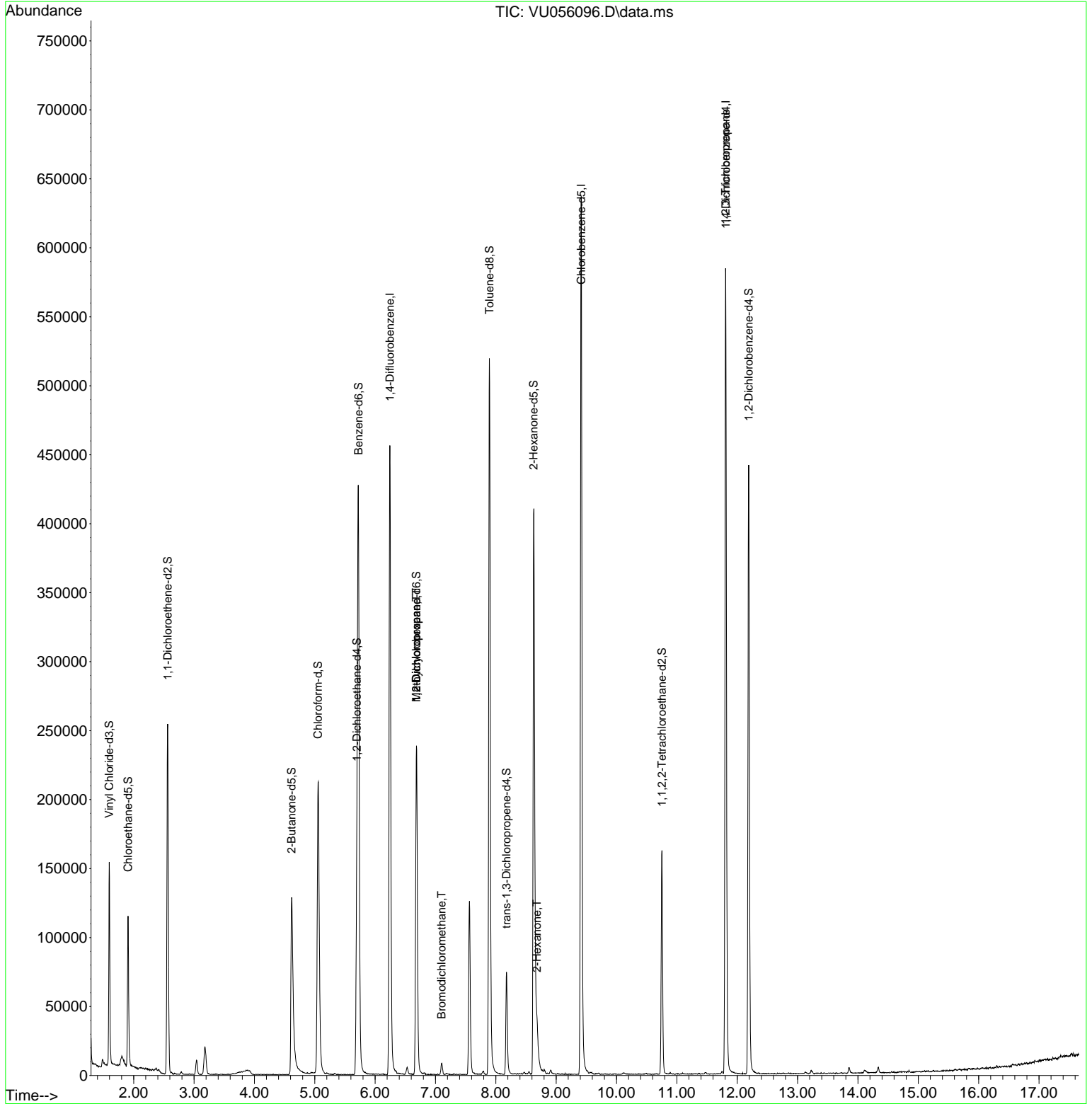
| Compound | R.T. | QIon | Response | Conc | Units | Dev(Min) |
|-------------------------------|--------|----------------|----------|--------|----------|----------|
| Internal Standards | | | | | | |
| 1) 1,4-Difluorobenzene | 6.245 | 114 | 388311 | 5.000 | ug/L | 0.00 |
| 28) Chlorobenzene-d5 | 9.415 | 117 | 381586 | 5.000 | ug/L | 0.00 |
| 58) 1,4-Dichlorobenzene-d4 | 11.810 | 152 | 166989 | 5.000 | ug/L | 0.00 |
| System Monitoring Compounds | | | | | | |
| 4) Vinyl Chloride-d3 | 1.595 | 65 | 106873 | 4.434 | ug/L | 0.00 |
| Spiked Amount | 5.000 | Range 40 - 130 | Recovery | = | 88.600% | |
| 7) Chloroethane-d5 | 1.907 | 69 | 84115 | 5.143 | ug/L | 0.00 |
| Spiked Amount | 5.000 | Range 65 - 130 | Recovery | = | 102.800% | |
| 11) 1,1-Dichloroethene-d2 | 2.563 | 65 | 48815 | 4.597 | ug/L | 0.00 |
| Spiked Amount | 5.000 | Range 60 - 125 | Recovery | = | 92.000% | |
| 20) 2-Butanone-d5 | 4.618 | 46 | 177742 | 44.951 | ug/L | 0.00 |
| Spiked Amount | 50.000 | Range 40 - 130 | Recovery | = | 89.900% | |
| 24) Chloroform-d | 5.055 | 84 | 204154 | 4.450 | ug/L | 0.00 |
| Spiked Amount | 5.000 | Range 70 - 125 | Recovery | = | 89.000% | |
| 26) 1,2-Dichloroethane-d4 | 5.698 | 65 | 93112 | 4.609 | ug/L | 0.00 |
| Spiked Amount | 5.000 | Range 70 - 130 | Recovery | = | 92.200% | |
| 32) Benzene-d6 | 5.724 | 84 | 427024 | 4.659 | ug/L | 0.00 |
| Spiked Amount | 5.000 | Range 70 - 125 | Recovery | = | 93.200% | |
| 36) 1,2-Dichloropropane-d6 | 6.685 | 67 | 121505 | 4.504 | ug/L | 0.00 |
| Spiked Amount | 5.000 | Range 60 - 140 | Recovery | = | 90.000% | |
| 41) Toluene-d8 | 7.894 | 98 | 371323 | 4.421 | ug/L | 0.00 |
| Spiked Amount | 5.000 | Range 70 - 130 | Recovery | = | 88.400% | |
| 43) trans-1,3-Dichloroprop... | 8.177 | 79 | 44674 | 4.332 | ug/L | 0.00 |
| Spiked Amount | 5.000 | Range 55 - 130 | Recovery | = | 86.600% | |
| 46) 2-Hexanone-d5 | 8.627 | 63 | 138022 | 40.836 | ug/L | 0.00 |
| Spiked Amount | 50.000 | Range 45 - 130 | Recovery | = | 81.680% | |
| 56) 1,1,2,2-Tetrachloroeth... | 10.753 | 84 | 83659 | 4.345 | ug/L | 0.00 |
| Spiked Amount | 5.000 | Range 65 - 120 | Recovery | = | 86.800% | |
| 66) 1,2-Dichlorobenzene-d4 | 12.190 | 152 | 122225 | 4.746 | ug/L | 0.00 |
| Spiked Amount | 5.000 | Range 80 - 120 | Recovery | = | 95.000% | |
| Target Compounds | | | | | | |
| 35) Methylcyclohexane | 6.685 | 83 | 29366 | 0.662 | ug/L # | 20 |
| 37) 1,2-Dichloropropane | 6.685 | 63 | 12493 | 0.440 | ug/L # | 87 |
| 38) Bromodichloromethane | 7.103 | 83 | 6390 | 0.180 | ug/L # | 94 |
| 48) 2-Hexanone | 8.682 | 43 | 16122 | 1.782 | ug/L # | 84 |
| 61) 1,2,3-Trichloropropane | 11.807 | 75 | 20611 | 1.430 | ug/L # | 68 |

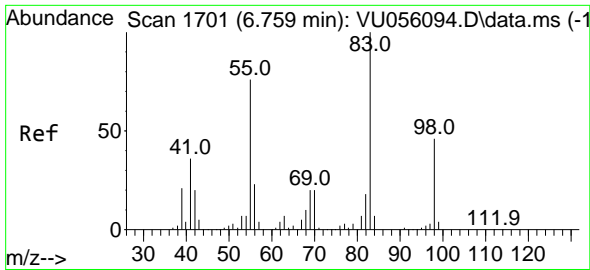
(#) = qualifier out of range (m) = manual integration (+) = signals summed

Data Path : Z:\voasrv\HPCHEM1\MSVOA_U\Data\VU110723\
 Data File : VU056096.D
 Acq On : 07 Nov 2023 14:08
 Operator : MD/SY
 Sample : VU1107WBL01
 Misc : 25.0mL/MSVOA_U/WATER
 ALS Vial : 1 Sample Multiplier: 1

Instrument :
 MSVOA_U
 ClientSampleId :

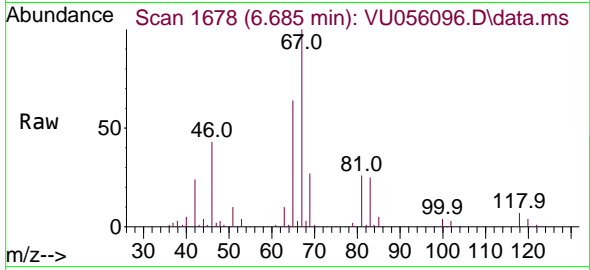
Quant Time: Nov 08 00:38:52 2023
 Quant Method : Z:\voasrv\HPCHEM1\MSVOA_U\Method\SFAMUTR110723WMA.M
 Quant Title : TRACE VOA SFAM1.0
 QLast Update : Wed Nov 08 00:38:11 2023
 Response via : Initial Calibration



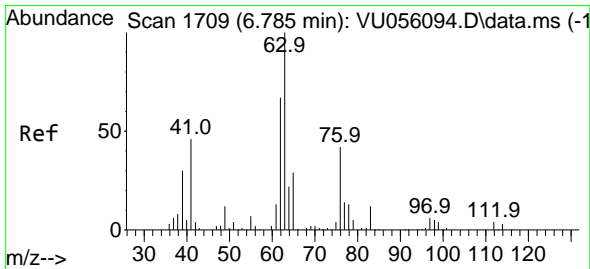
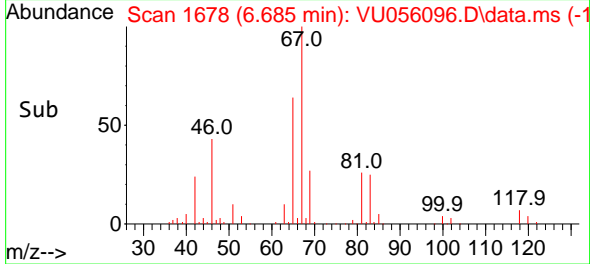
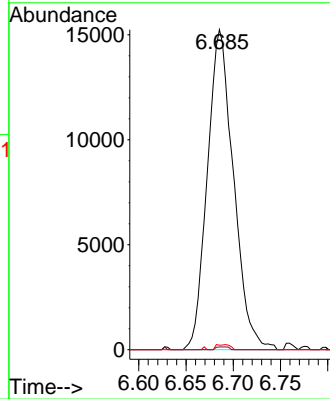


#35
 Methylcyclohexane
 Concen: 0.662 ug/L
 RT: 6.685 min Scan# 1678
 Delta R.T. -0.074 min
 Lab File: VU056096.D
 Acq: 07 Nov 2023 14:08

Instrument : MSVOA_U
 ClientSampleId :

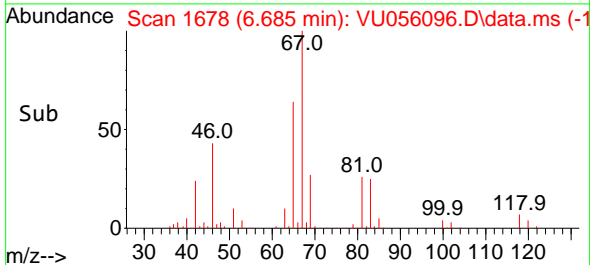
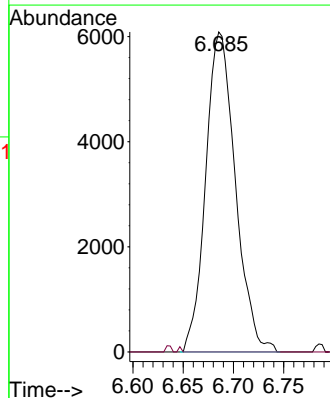
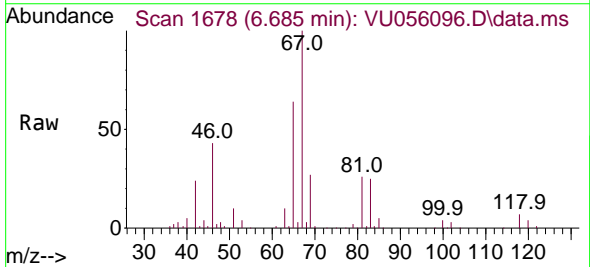


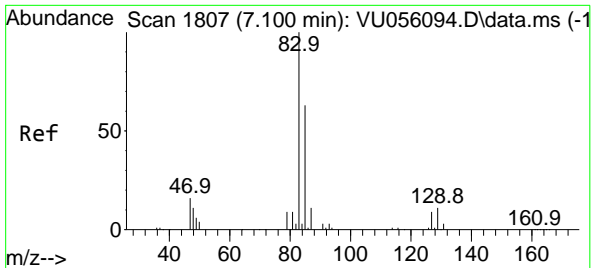
Tgt Ion: 83 Resp: 29366
 Ion Ratio Lower Upper
 83 100
 55 0.4 60.6 91.0#
 98 0.8 36.2 54.4#



#37
 1,2-Dichloropropane
 Concen: 0.440 ug/L
 RT: 6.685 min Scan# 1678
 Delta R.T. -0.100 min
 Lab File: VU056096.D
 Acq: 07 Nov 2023 14:08

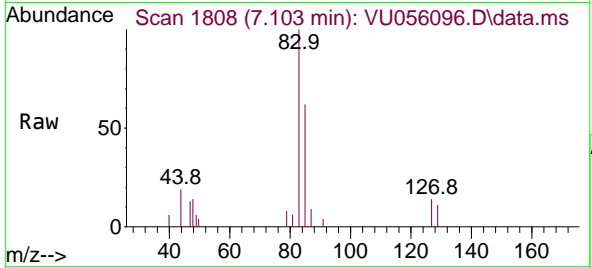
Tgt Ion: 63 Resp: 12493
 Ion Ratio Lower Upper
 63 100
 112 0.2 3.4 5.2#



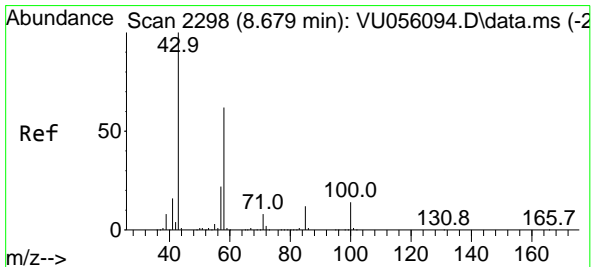
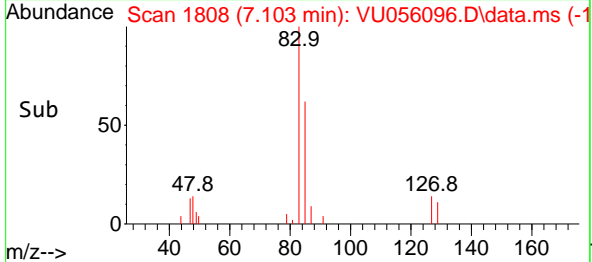
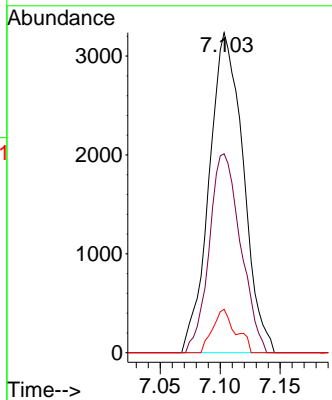


#38
 Bromodichloromethane
 Concen: 0.180 ug/L
 RT: 7.103 min Scan# 1808
 Delta R.T. 0.003 min
 Lab File: VU056096.D
 Acq: 07 Nov 2023 14:08

Instrument :
 MSVOA_U
 ClientSampleId :

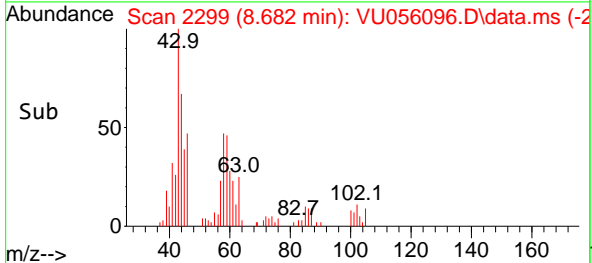
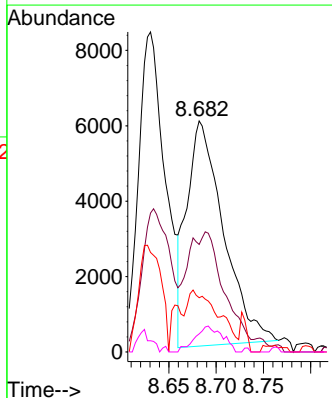
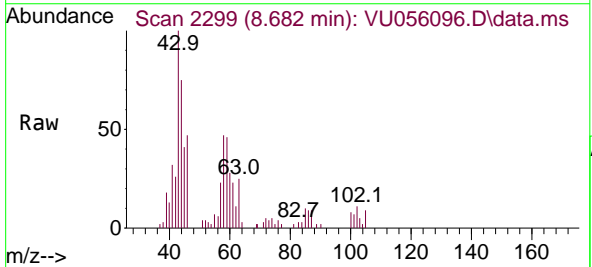


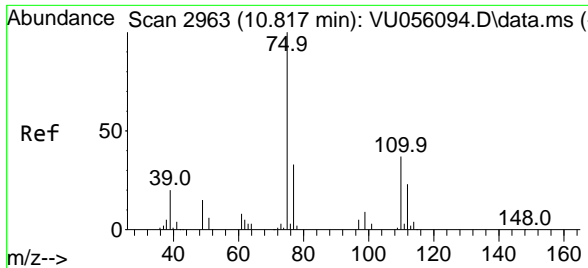
| Tgt Ion | Resp | Lower | Upper |
|---------|------|-------|-------|
| 83 | 6390 | | |
| 83 | 100 | | |
| 85 | 62.2 | 46.6 | 86.6 |
| 127 | 13.5 | 7.3 | 10.9# |



#48
 2-Hexanone
 Concen: 1.782 ug/L
 RT: 8.682 min Scan# 2299
 Delta R.T. 0.003 min
 Lab File: VU056096.D
 Acq: 07 Nov 2023 14:08

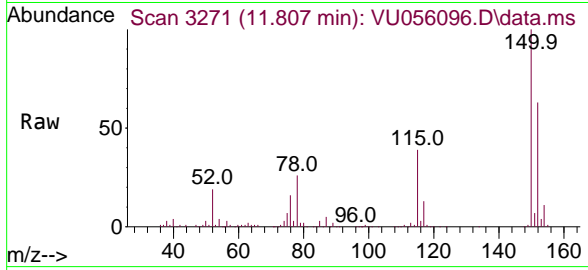
| Tgt Ion | Resp | Lower | Upper |
|---------|-------|-------|-------|
| 43 | 16122 | | |
| 43 | 100 | | |
| 58 | 48.3 | 52.0 | 78.0# |
| 57 | 23.5 | 17.4 | 26.2 |
| 100 | 8.5 | 11.0 | 16.6# |





#61
 1,2,3-Trichloropropane
 Concen: 1.430 ug/L
 RT: 11.807 min Scan# 31
 Delta R.T. 0.990 min
 Lab File: VU056096.D
 Acq: 07 Nov 2023 14:08

Instrument :
 MSVOA_U
 ClientSampleId :



Tgt Ion: 75 Resp: 20611

| Ion | Ratio | Lower | Upper |
|-----|-------|-------|-------|
| 75 | 100 | | |
| 110 | 2.2 | 29.7 | 44.5# |
| 77 | 32.7 | 25.5 | 38.3 |

