

Data Path : Z:\VOASRV\HPCHEM1\MSVOA U\DATA\VU110920\
 Data File : VU041162.D
 Acq On : 10 Nov 2020 00:16
 Operator : SY/MD
 Sample : L4673-14MS
 Misc : 25.0mL/MSVOA U/WATER
 ALS Vial : 33 Sample Multiplier: 1

Instrument :
 MSVOA_U
 ClientSampleID :
 GB0T3

Quant Time: Nov 10 05:49:47 2020
 Quant Method : Z:\VOASRV\HPCHEM1\MSVOA_U\METHOD\SOMUTR102620WMA.M
 Quant Title : TRACE VOA SOM01.0
 QLast Update : Tue Nov 10 04:18:40 2020
 Response via : Initial Calibration

Internal Standards	R.T.	QIon	Response	Conc	Units	Dev(Min)
1) 1,4-Difluorobenzene	6.26	114	57389	5.00	ug/L	0.00
28) Chlorobenzene-d5	9.42	117	58961	5.00	ug/L	0.00
60) 1,4-Dichlorobenzene-d4	11.81	152	26042	5.00	ug/L	0.00

System Monitoring Compounds

4) Vinyl Chloride-d3	1.60	65	15575	3.23	ug/L	0.00
Spiked Amount	5.000	Range	40 - 130	Recovery	=	64.60%
7) Chloroethane-d5	1.92	69	14975	4.04	ug/L	0.00
Spiked Amount	5.000	Range	65 - 130	Recovery	=	80.80%
11) 1,1-Dichloroethene-d2	2.58	63	38605	4.08	ug/L	0.00
Spiked Amount	5.000	Range	60 - 125	Recovery	=	81.60%
20) 2-Butanone-d5	4.66	46	90210	56.82	ug/L	0.00
Spiked Amount	50.000	Range	40 - 130	Recovery	=	113.64%
24) Chloroform-d	5.08	84	42570	5.00	ug/L	0.00
Spiked Amount	5.000	Range	70 - 125	Recovery	=	100.00%
26) 1,2-Dichloroethane-d4	5.72	65	26605	5.03	ug/L	0.00
Spiked Amount	5.000	Range	70 - 130	Recovery	=	100.60%
32) Benzene-d6	5.74	84	70664	4.48	ug/L	0.00
Spiked Amount	5.000	Range	70 - 125	Recovery	=	89.60%
36) 1,2-Dichloropropane-d6	6.70	67	25753	5.01	ug/L	0.00
Spiked Amount	5.000	Range	60 - 140	Recovery	=	100.20%
41) Toluene-d8	7.91	98	58837	4.12	ug/L	0.00
Spiked Amount	5.000	Range	70 - 130	Recovery	=	82.40%
43) trans-1,3-Dichloropropene-	8.19	79	10096	4.54	ug/L	0.00
Spiked Amount	5.000	Range	55 - 130	Recovery	=	90.80%
46) 2-Hexanone-d5	8.64	63	69291	57.83	ug/L	0.00
Spiked Amount	50.000	Range	45 - 130	Recovery	=	115.66%
57) 1,1,2,2-Tetrachloroethane-	10.75	84	24317	5.10	ug/L	0.00
Spiked Amount	5.000	Range	65 - 120	Recovery	=	102.00%
64) 1,2-Dichlorobenzene-d4	12.19	152	25958	5.68	ug/L	0.00
Spiked Amount	5.000	Range	80 - 120	Recovery	=	113.60%

Target Compounds

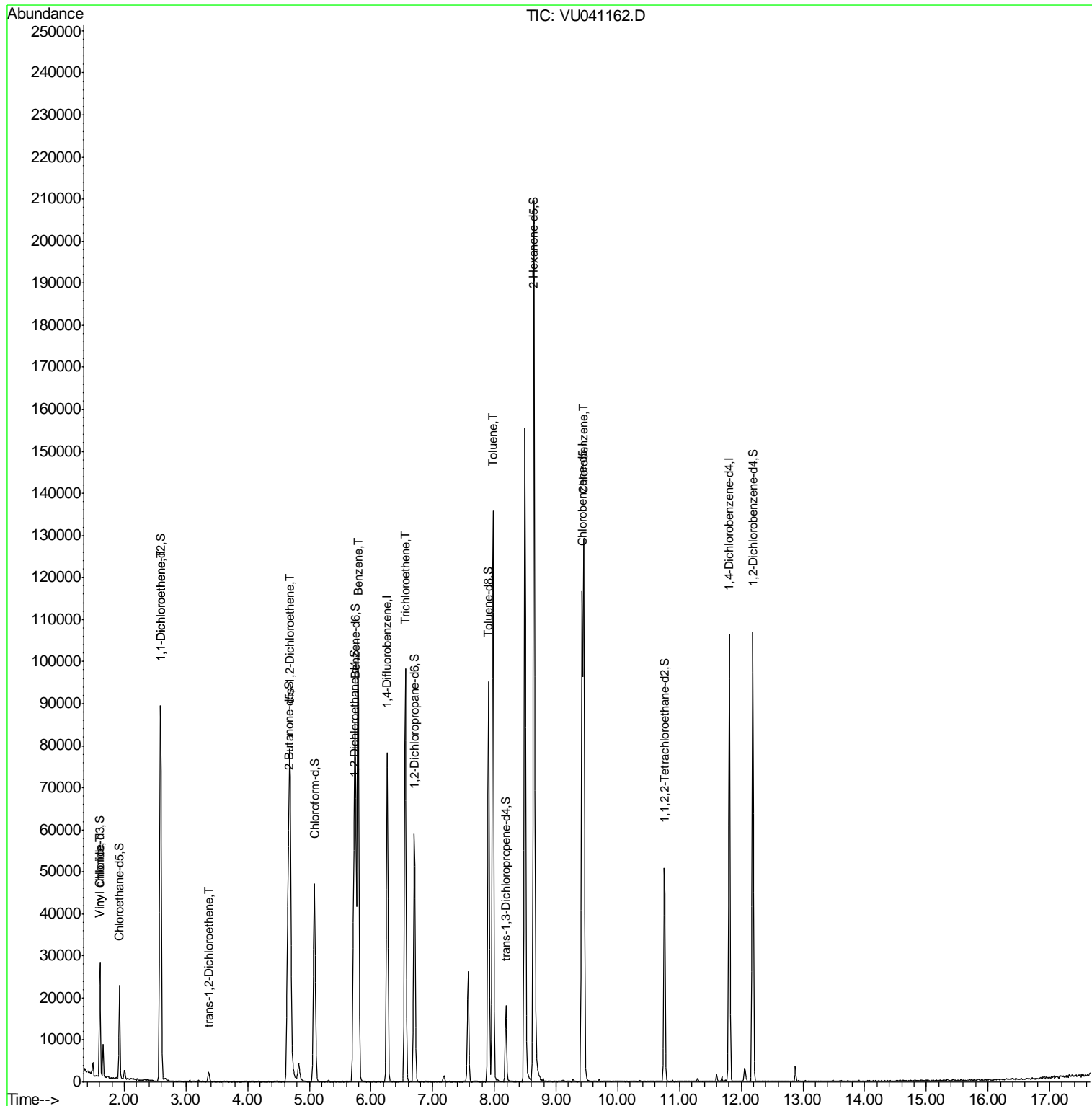
Target Compounds	R.T.	QIon	Response	Conc	Units	Ovalue
5) Vinyl chloride	1.61	62	2705	0.502	ug/L	91
12) 1,1-Dichloroethene	2.59	96	20678	5.101	ug/L	87
18) trans-1,2-Dichloroethene	3.37	96	1086	0.264	ug/L	88
22) cis-1,2-Dichloroethene	4.69	96	28489	6.704	ug/L	97
33) Benzene	5.79	78	93637	5.315	ug/L	100
34) Trichloroethene	6.55	95	33296	7.426	ug/L	96
42) Toluene	7.98	91	91052	5.097	ug/L	99
51) Chlorobenzene	9.45	112	60781	5.366	ug/L	99

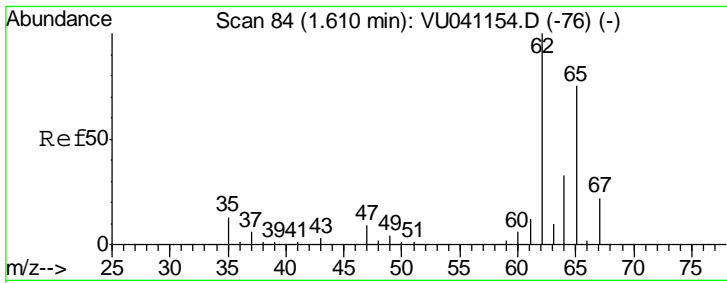
(#) = qualifier out of range (m) = manual integration (+) = signals summed

Data Path : Z:\VOASRV\HPCHEM1\MSVOA U\DATA\VU110920\
 Data File : VU041162.D
 Acq On : 10 Nov 2020 00:16
 Operator : SY/MD
 Sample : L4673-14MS
 Misc : 25.0mL/MSVOA U/WATER
 ALS Vial : 33 Sample Multiplier: 1

Instrument :
 MSVOA_U
 ClientSampled :
 GB0T3

Quant Time: Nov 10 05:49:47 2020
 Quant Method : Z:\VOASRV\HPCHEM1\MSVOA_U\METHOD\SOMUTR102620WMA.M
 Quant Title : TRACE VOA SOM01.0
 QLast Update : Tue Nov 10 04:18:40 2020
 Response via : Initial Calibration

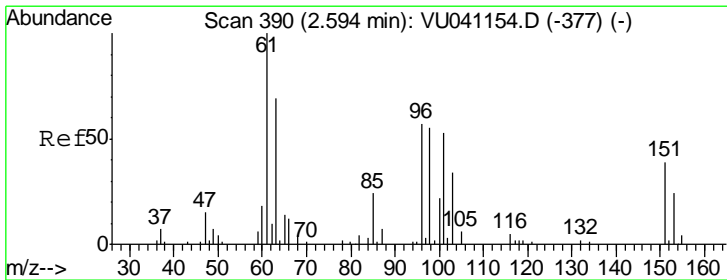
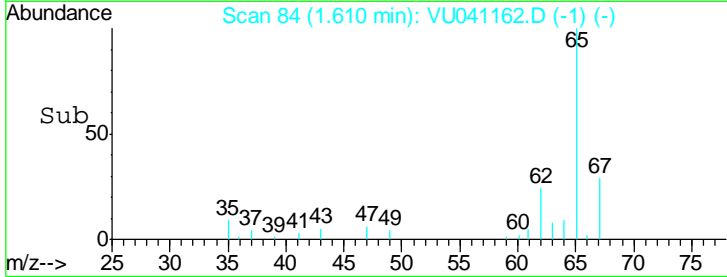
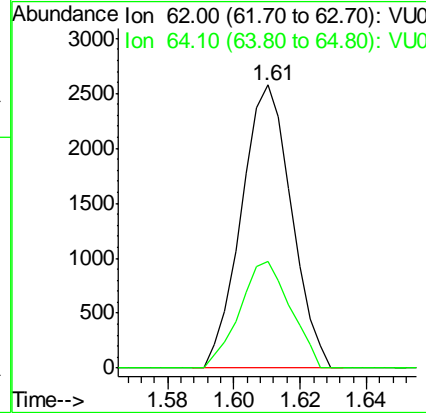
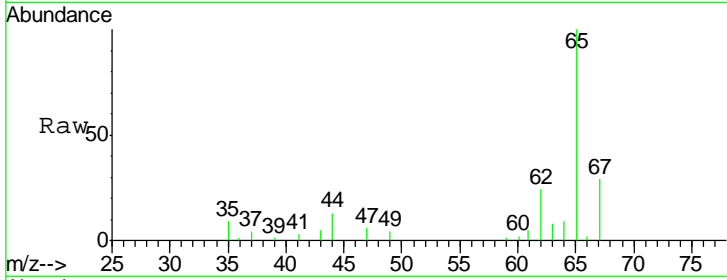




#5
 Vinyl chloride
 Concen: 0.502 ug/L
 RT: 1.61 min Scan# 84
 Delta R.T. 0.00 min
 Lab File: VU041162.D
 Acq: 10 Nov 2020 00:16

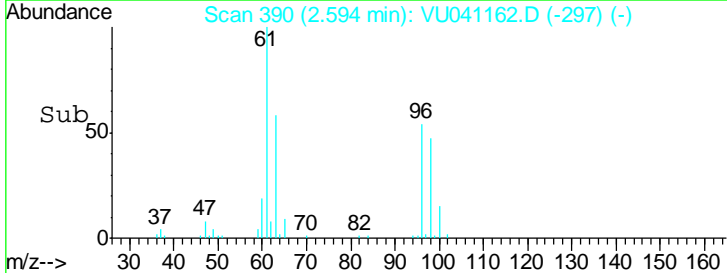
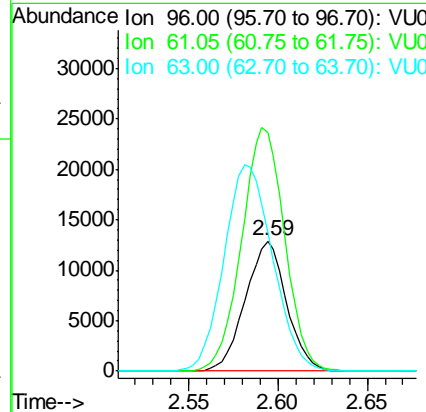
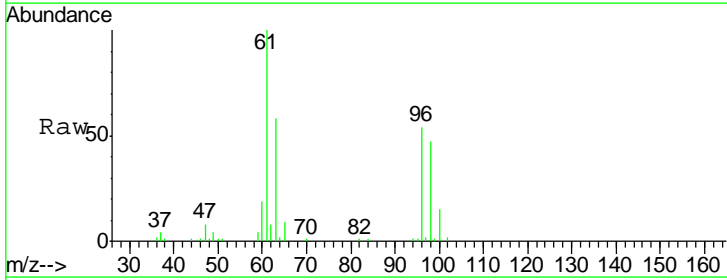
Instrument :
 MSVOA_U
ClientSampled :
 GB0T3

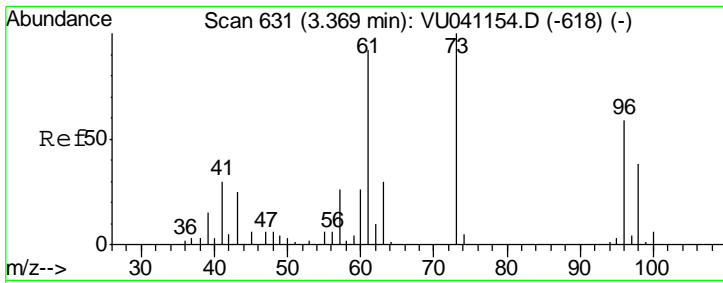
Tgt Ion	Resp	Lower	Upper
62	100		
64	37.6	22.7	42.3



#12
 1,1-Dichloroethene
 Concen: 5.101 ug/L
 RT: 2.59 min Scan# 390
 Delta R.T. 0.00 min
 Lab File: VU041162.D
 Acq: 10 Nov 2020 00:16

Tgt Ion	Resp	Lower	Upper
96	100		
61	183.8	134.3	249.5
63	106.4	95.0	176.4

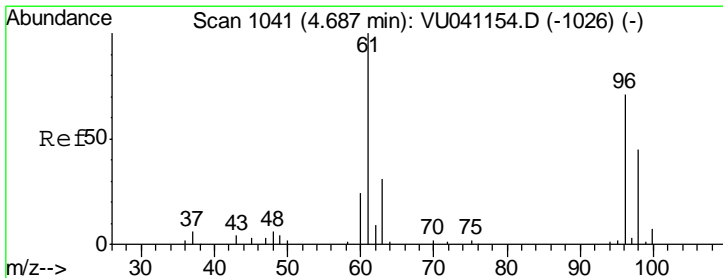
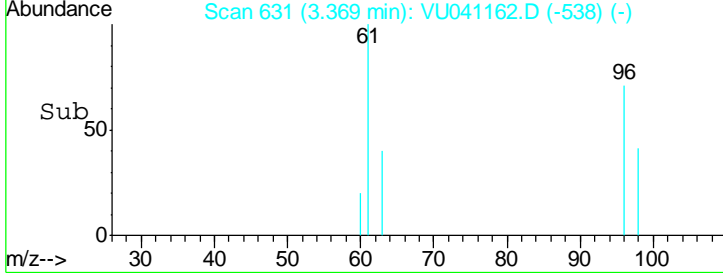
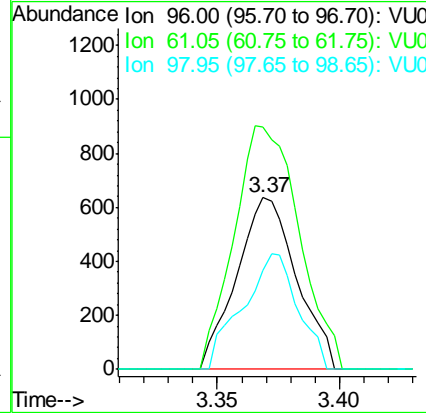
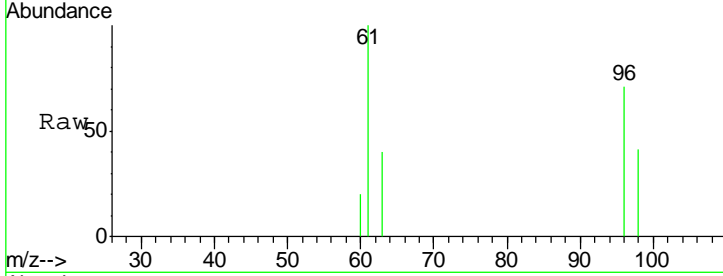




#18
 trans-1,2-Dichloroethene
 Concen: 0.264 ug/L
 RT: 3.37 min Scan# 631
 Delta R.T. 0.00 min
 Lab File: VU041162.D
 Acq: 10 Nov 2020 00:16

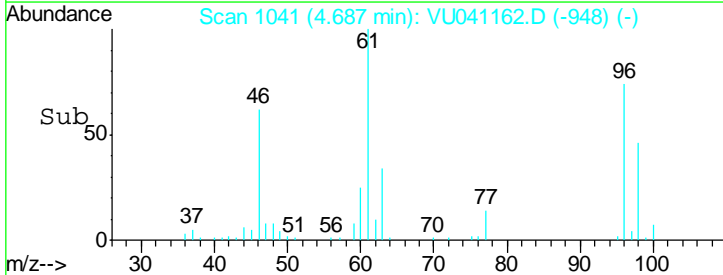
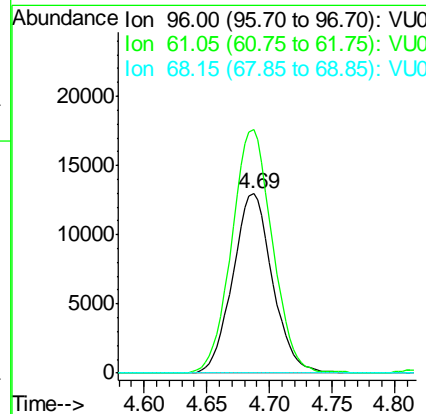
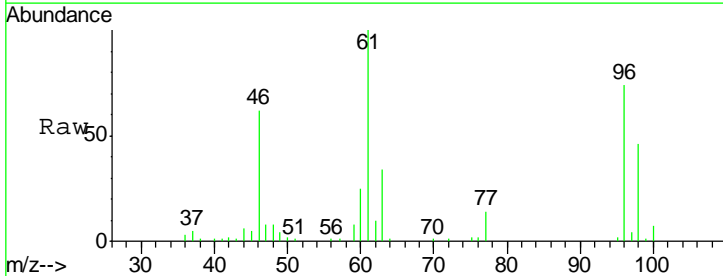
Instrument :
 MSVOA_U
ClientSampled :
 GB0T3

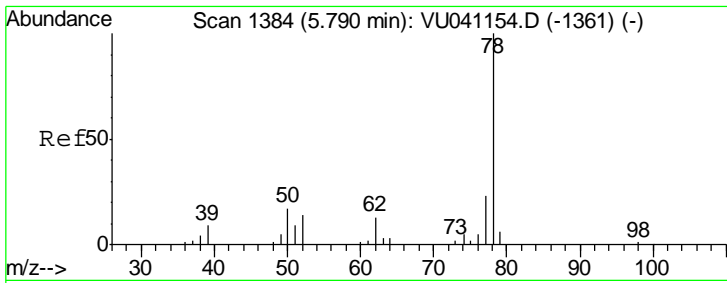
Tgt Ion	Resp	Lower	Upper
96	1086		
Ion Ratio			
96	100		
61	141.6	110.9	205.9
98	58.0	45.4	84.2



#22
 cis-1,2-Dichloroethene
 Concen: 6.704 ug/L
 RT: 4.69 min Scan# 1041
 Delta R.T. 0.00 min
 Lab File: VU041162.D
 Acq: 10 Nov 2020 00:16

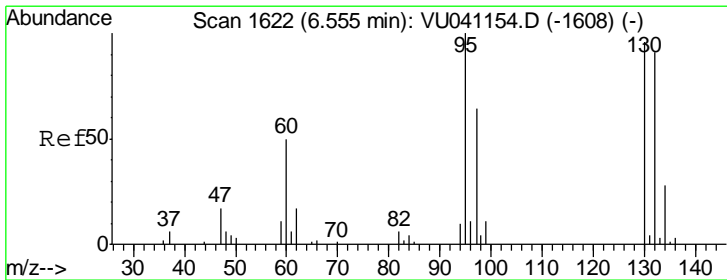
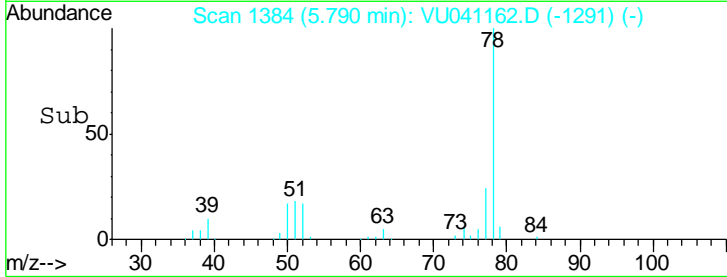
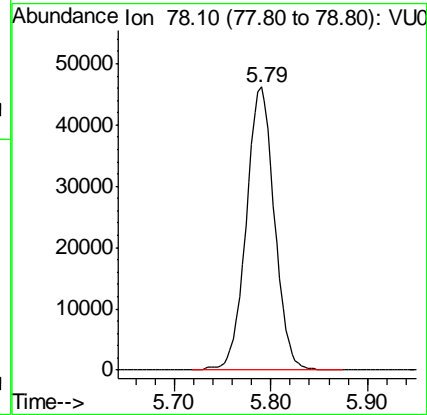
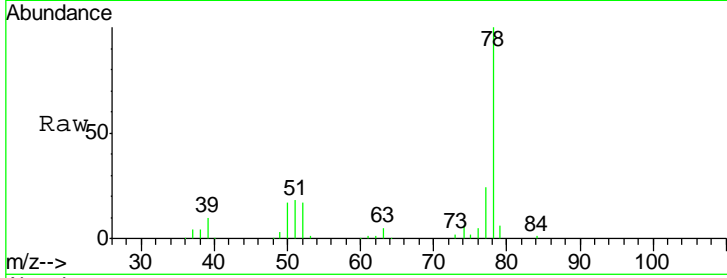
Tgt Ion	Resp	Lower	Upper
96	28489		
Ion Ratio			
96	100		
61	135.6	97.2	180.4
68	0.0	0.0	0.0





#33
 Benzene
 Concen: 5.315 ug/L
 RT: 5.79 min Scan# 1384
 Delta R.T. 0.00 min
 Lab File: VU041162.D
 Acq: 10 Nov 2020 00:16
 Tgt Ion: 78 Resp: 93637

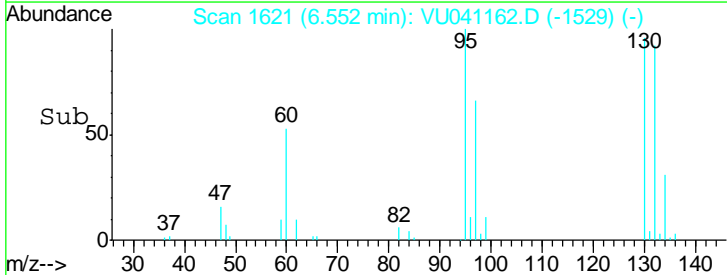
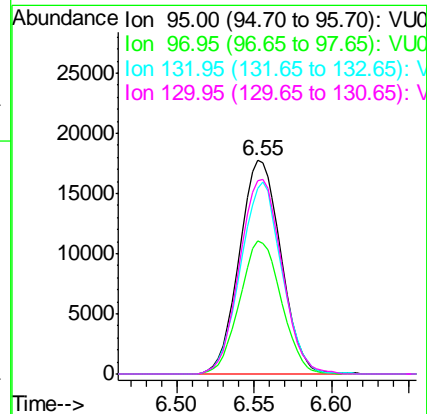
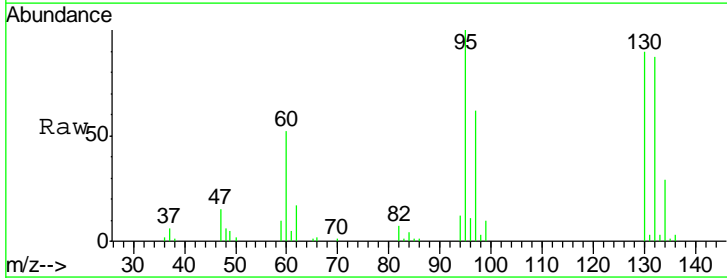
Instrument : MSVOA_U
 ClientSampled : GB0T3

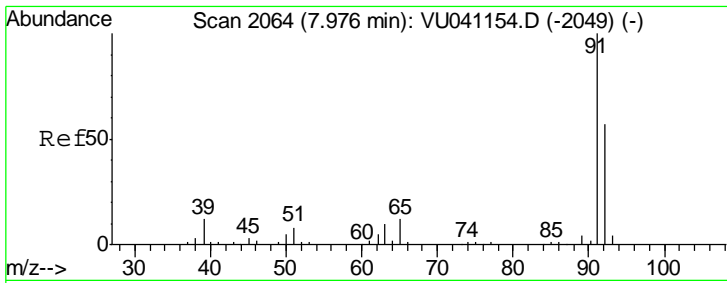


#34
 Trichloroethene
 Concen: 7.426 ug/L
 RT: 6.55 min Scan# 1621
 Delta R.T. -0.00 min
 Lab File: VU041162.D
 Acq: 10 Nov 2020 00:16

Tgt Ion: 95 Resp: 33296

Ion	Ratio	Lower	Upper
95	100		
97	62.3	45.6	84.6
132	86.6	64.8	120.4
130	90.5	64.8	120.4



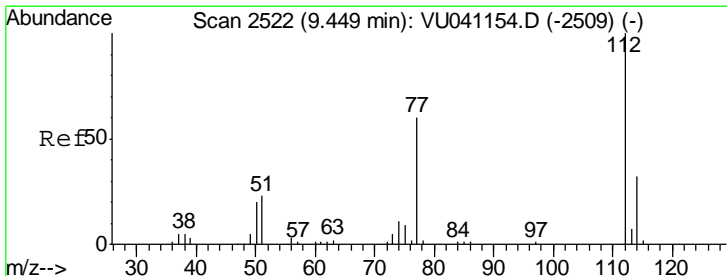
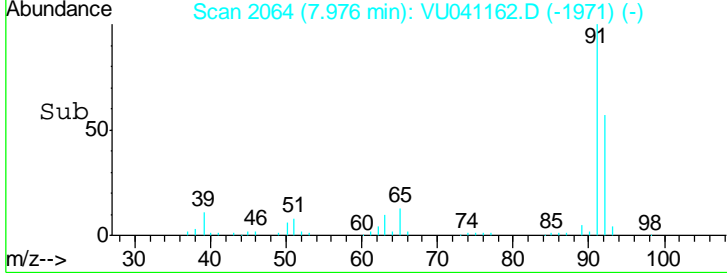
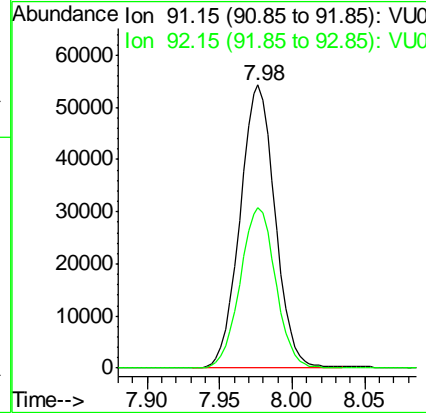
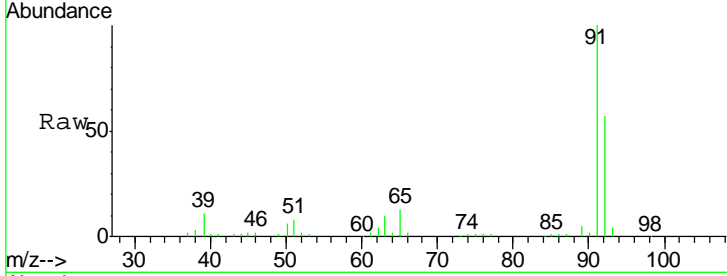


#42
 Toluene
 Concen: 5.097 ug/L
 RT: 7.98 min Scan# 2064
 Delta R.T. 0.00 min
 Lab File: VU041162.D
 Acq: 10 Nov 2020 00:16

Instrument :
 MSVOA_U
 ClientSampled :
 GB0T3

Tgt Ion: 91 Resp: 91052

Ion	Ratio	Lower	Upper
91	100		
92	56.9	40.6	75.4



#51
 Chlorobenzene
 Concen: 5.366 ug/L
 RT: 9.45 min Scan# 2522
 Delta R.T. 0.00 min
 Lab File: VU041162.D
 Acq: 10 Nov 2020 00:16

Tgt Ion: 112 Resp: 60781

Ion	Ratio	Lower	Upper
112	100		
114	32.2	22.4	41.6
77	63.1	51.2	76.8

