

Data Path : Z:\VOASRV\HPCHEM1\MSVOA U\DATA\VU110920\
 Data File : VU041145.D
 Acq On : 09 Nov 2020 16:55
 Operator : SY/MD
 Sample : L4646-12
 Misc : 25.0mL/MSVOA U/WATER
 ALS Vial : 14 Sample Multiplier: 1

Instrument :
 MSVOA_U
 ClientSampled :
 GB0T6

Integration Parameters: rteint.p
 Integrator: RTE
 Smoothing : ON
 Sampling : 1
 Start Thrs: 0.1
 Stop Thrs : 0

Filtering: 5
 Min Area: 3 % of largest Peak
 Max Peaks: 100
 Peak Location: TOP

If leading or trailing edge < 100 prefer < Baseline drop else tangent >
 Peak separation: 5

Method : Z:\VOASRV\HPCHEM1\MSVOA_U\METHOD\SOMUTR102620WMA.M
 Title : TRACE VOA SOM01.0

Signal : TIC

peak #	R.T. min	first scan	max scan	last scan	PK TY	peak height	corr. area	corr. % max.	% of total
1	1.494	40	48	71	rBV	1231055	1339393	2.04%	0.927%
2	1.607	71	83	96	rBV	7117301	8138654	12.43%	5.635%
3	2.002	195	206	232	rVB	11345055	15395307	23.50%	10.660%
4	2.218	262	273	295	rVB3	1999656	3810383	5.82%	2.638%
5	2.327	296	307	320	rVV	1253032	1792714	2.74%	1.241%
6	2.427	320	338	345	rVV	563903	899492	1.37%	0.623%
7	2.478	345	354	374	rVB	2498330	3899978	5.95%	2.700%
8	3.057	497	534	541	rBV3	1196562	3322471	5.07%	2.301%
9	3.153	555	564	587	rVB	1489204	3249834	4.96%	2.250%
10	3.378	615	634	655	rVB	874894	1931422	2.95%	1.337%
11	3.999	815	827	845	rVB	465286	1111518	1.70%	0.770%
12	4.356	924	938	954	rVB	312153	733961	1.12%	0.508%
13	4.552	982	999	1015	rVV	1843600	4395755	6.71%	3.044%
14	5.407	1247	1265	1277	rBV	1563749	3592652	5.48%	2.488%
15	5.478	1278	1287	1311	rVB	441706	1059367	1.62%	0.734%
16	5.809	1355	1390	1403	rBV2	29097574	65500424	100.00%	45.355%
17	5.919	1416	1424	1440	rVB4	518454	1230176	1.88%	0.852%
18	6.774	1674	1690	1713	rVB3	352945	881246	1.35%	0.610%
19	7.391	1858	1882	1916	rBV3	459644	1112811	1.70%	0.771%
20	9.571	2549	2560	2580	rBV	649945	1023669	1.56%	0.709%
21	9.697	2586	2599	2626	rVB	4252073	6942120	10.60%	4.807%
22	10.484	2830	2844	2856	rBV	685605	1060630	1.62%	0.734%
23	10.902	2963	2974	2989	rBV	901312	1389849	2.12%	0.962%
24	10.996	2990	3003	3007	rBV	734014	1140983	1.74%	0.790%
25	11.288	3082	3094	3115	rVB	1470648	2230790	3.41%	1.545%
26	11.465	3135	3149	3160	rBV	1019675	1538765	2.35%	1.065%
27	11.889	3268	3281	3293	rBV	834751	1287373	1.97%	0.891%
28	12.089	3325	3343	3361	rBV	2193991	3626494	5.54%	2.511%
29	13.446	3753	3765	3778	rVB3	475119	780416	1.19%	0.540%

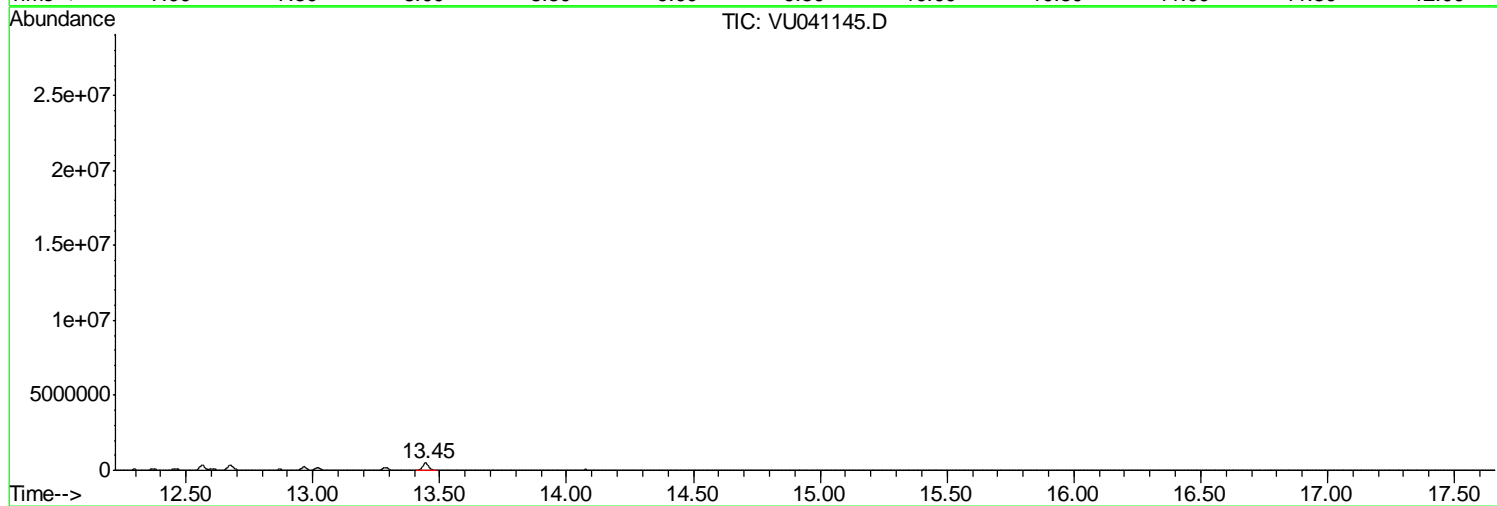
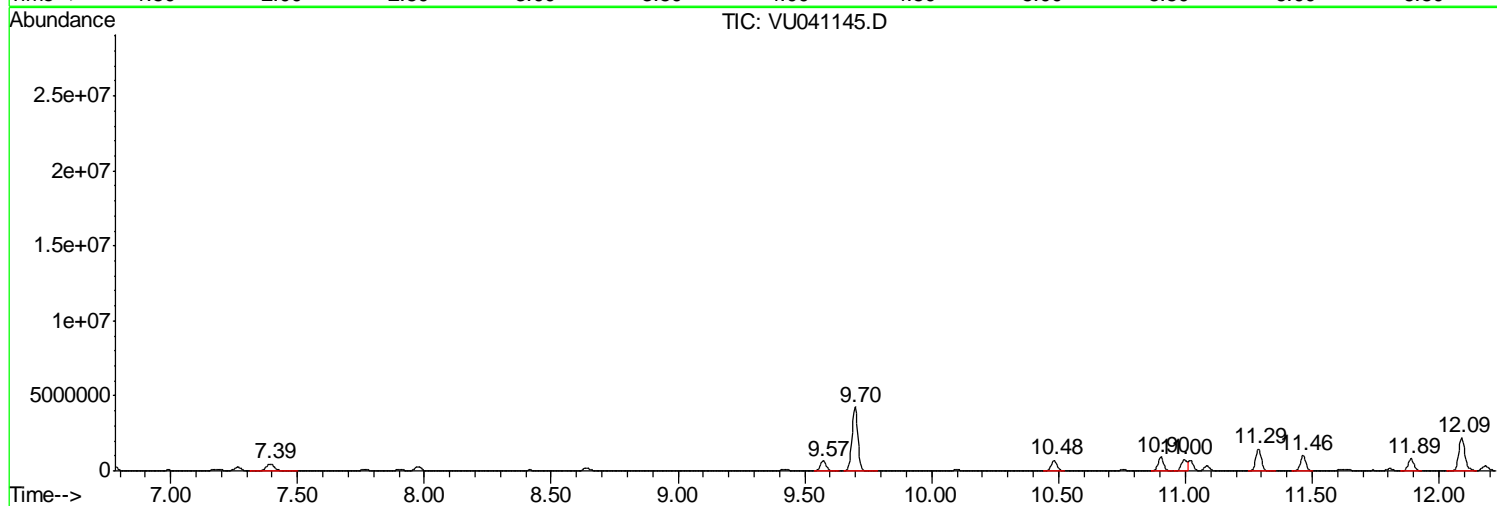
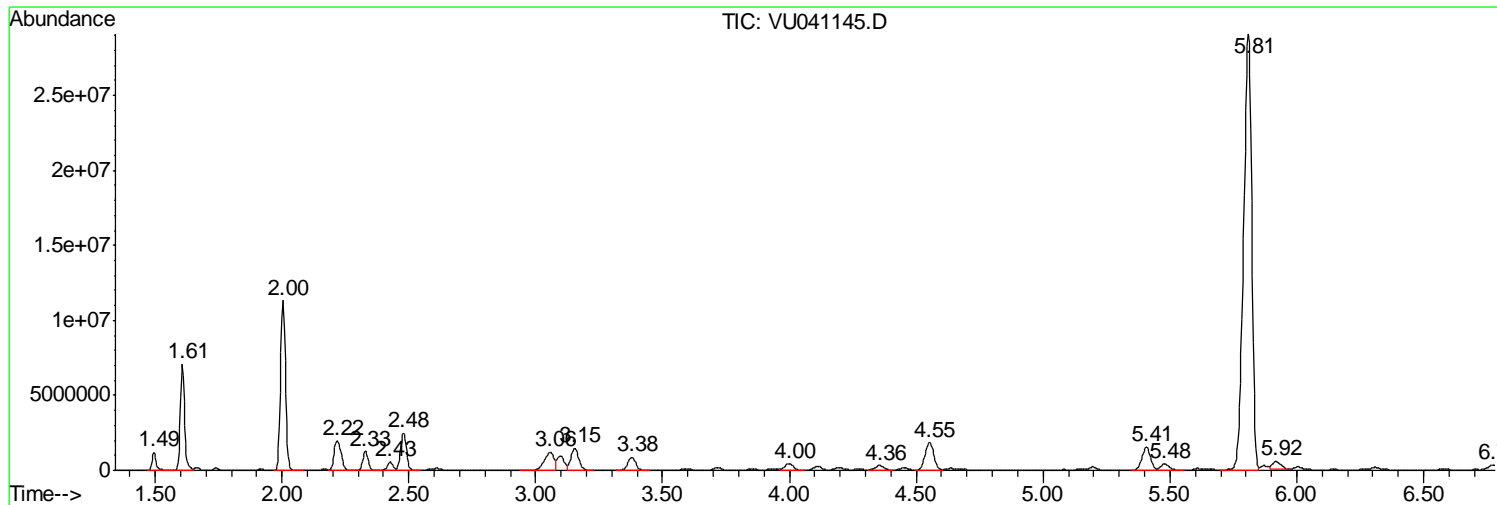
Sum of corrected areas: 144418647

Data Path : Z:\VOASRV\HPCHEM1\MSVOA U\DATA\VU110920\
 Data File : VU041145.D
 Acq On : 09 Nov 2020 16:55
 Operator : SY/MD
 Sample : L4646-12
 Misc : 25.0mL/MSVOA U/WATER
 ALS Vial : 14 Sample Multiplier: 1

Instrument :
 MSVOA_U
 Client Sampled :
 GB0T6

Quant Method : Z:\VOASRV\HPCHEM1\MSVOA_U\METHOD\SOMUTR102620WMA.M
 Quant Title : TRACE VOA SOM01.0

TIC Library : C:\DATABASE\NIST11.L
 TIC Integration Parameters: LSCINT.P



Data Path : Z:\VOASRV\HPCHEM1\MSVOA U\DATA\VU110920\
 Data File : VU041145.D
 Acq On : 09 Nov 2020 16:55
 Operator : SY/MD
 Sample : L4646-12
 Misc : 25.0mL/MSVOA U/WATER
 ALS Vial : 14 Sample Multiplier: 1

Instrument :
 MSVOA_U
 ClientSampled :
 GB0T6

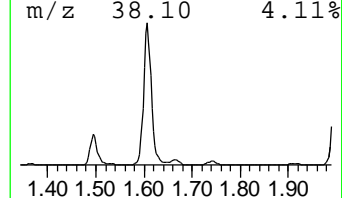
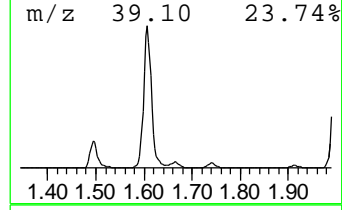
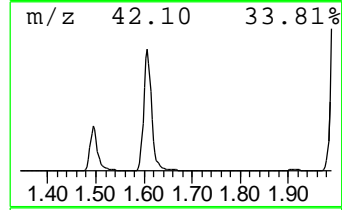
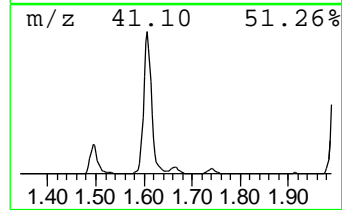
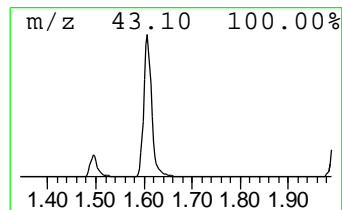
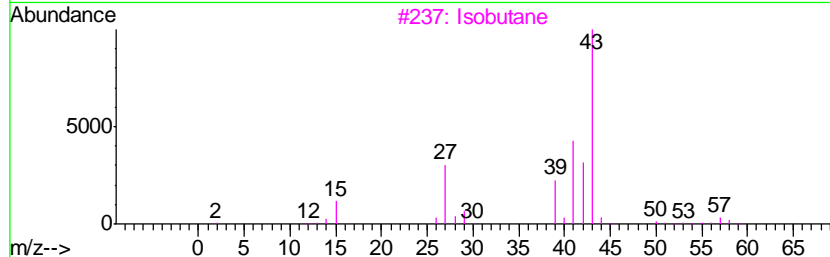
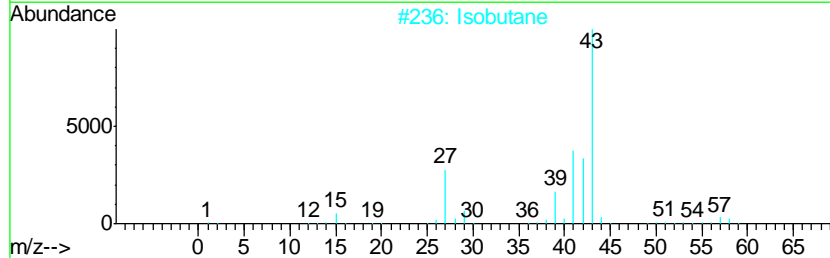
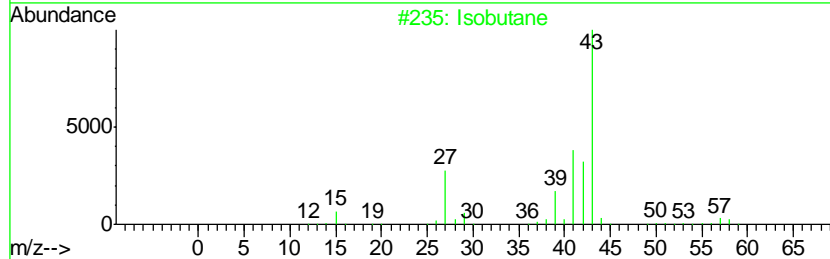
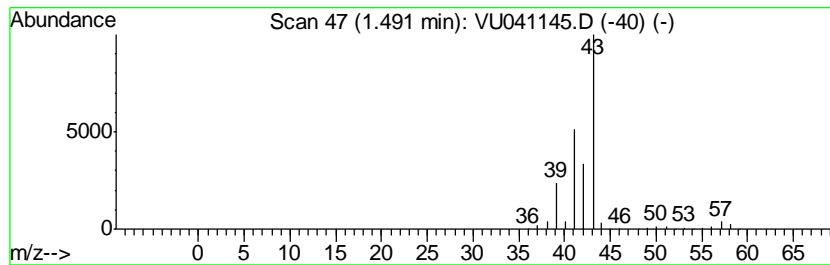
Quant Method : Z:\VOASRV\HPCHEM1\MSVOA_U\METHOD\SOMUTR102620WMA.M
 Quant Title : TRACE VOA SOM01.0

TIC Library : C:\DATABASE\NIST11.L
 TIC Integration Parameters: LSCINT.P

 Peak Number 1 (DEL) Alkane: Straight-Chai... Concentration Rank 12

R.T.	EstConc	Area	Relative to ISTD	R.T.
1.49	5.44 ug/L	1339390	1,4-Difluorobenzene	6.26

Hit#	of	Tentative ID	MW	MolForm	CAS#	Qual
1	5	Isobutane	58	C4H10	000075-28-5	72
2		Isobutane	58	C4H10	000075-28-5	72
3		Isobutane	58	C4H10	000075-28-5	64
4		Isobutane	58	C4H10	000075-28-5	42
5		Propane, 2-nitro-	89	C3H7NO2	000079-46-9	9



Data Path : Z:\VOASRV\HPCHEM1\MSVOA U\DATA\VU110920\
 Data File : VU041145.D
 Acq On : 09 Nov 2020 16:55
 Operator : SY/MD
 Sample : L4646-12
 Misc : 25.0mL/MSVOA U/WATER
 ALS Vial : 14 Sample Multiplier: 1

Instrument :
 MSVOA_U
 ClientSampled :
 GB0T6

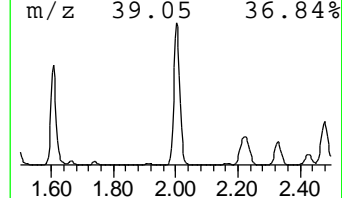
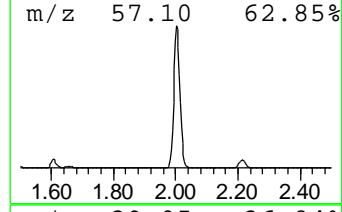
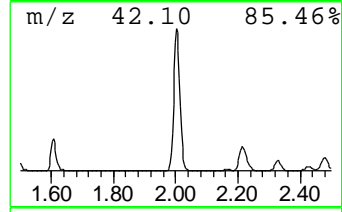
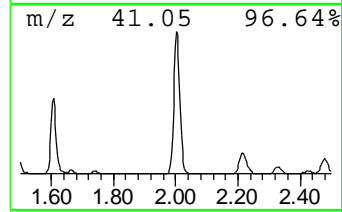
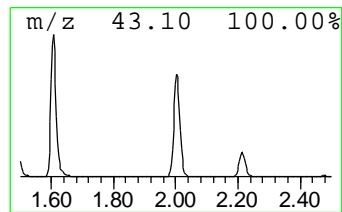
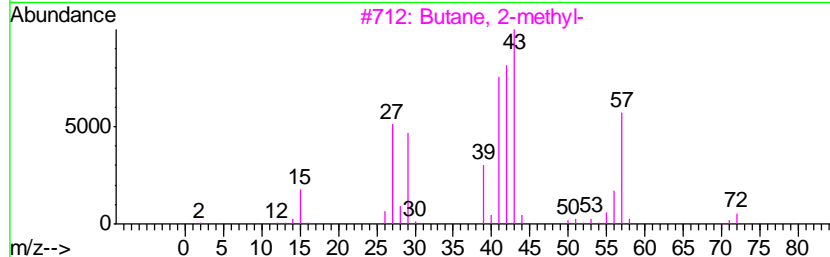
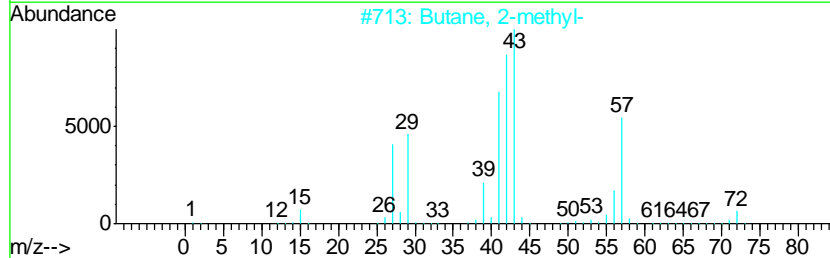
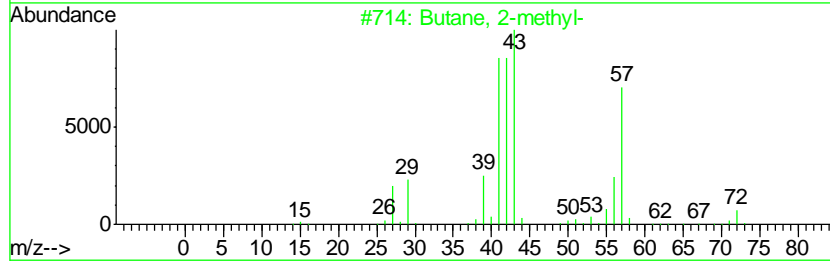
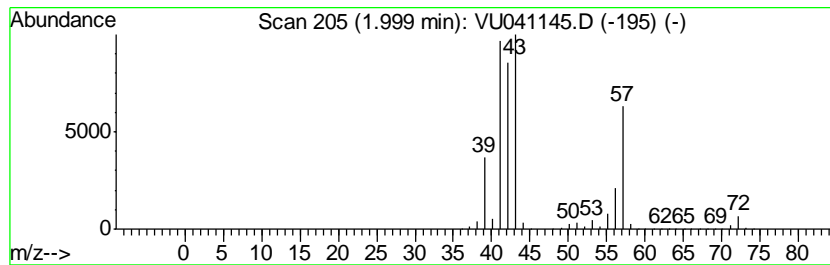
Quant Method : Z:\VOASRV\HPCHEM1\MSVOA_U\METHOD\SOMUTR102620WMA.M
 Quant Title : TRACE VOA SOM01.0

TIC Library : C:\DATABASE\NIST11.L
 TIC Integration Parameters: LSCINT.P

 Peak Number 2 (DEL) Alkane: Straight-Chai... Concentration Rank 1

R.T.	EstConc	Area	Relative to ISTD	R.T.
2.00	62.57 ug/L	15395300	1,4-Difluorobenzene	6.26

Hit#	of	Tentative ID	MW	MolForm	CAS#	Qual
1	5	Butane, 2-methyl-	72	C5H12	000078-78-4	91
2		Butane, 2-methyl-	72	C5H12	000078-78-4	90
3		Butane, 2-methyl-	72	C5H12	000078-78-4	86
4		3-Buten-1-ol	72	C4H8O	000627-27-0	47
5		Pentane	72	C5H12	000109-66-0	36



Data Path : Z:\VOASRV\HPCHEM1\MSVOA U\DATA\VU110920\
 Data File : VU041145.D
 Acq On : 09 Nov 2020 16:55
 Operator : SY/MD
 Sample : L4646-12
 Misc : 25.0mL/MSVOA U/WATER
 ALS Vial : 14 Sample Multiplier: 1

Instrument :
 MSVOA_U
 ClientSampleID :
 GB0T6

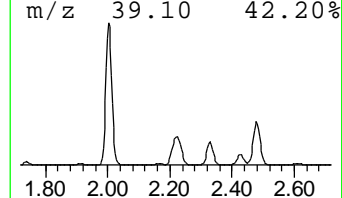
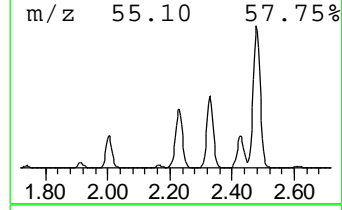
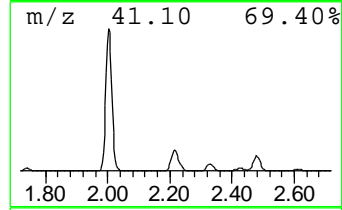
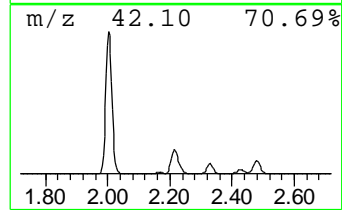
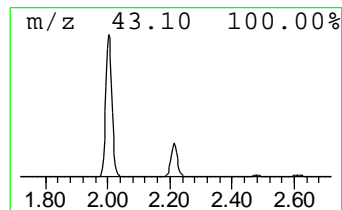
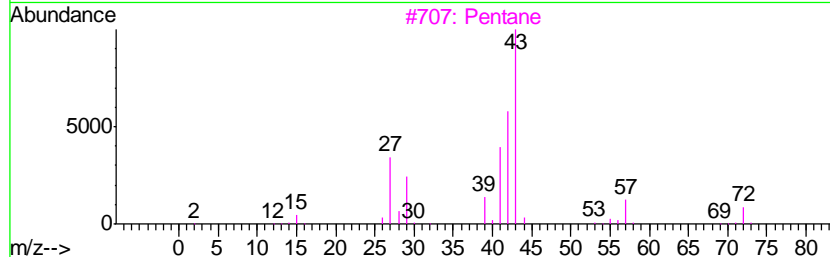
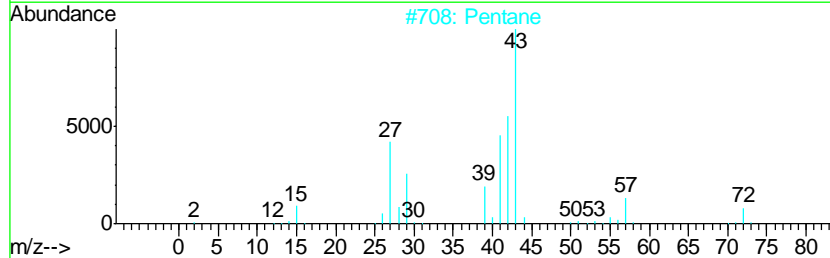
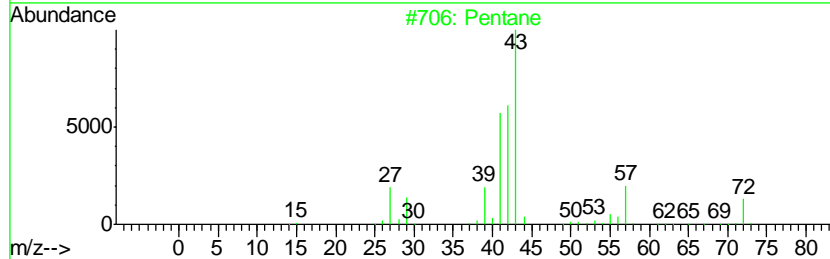
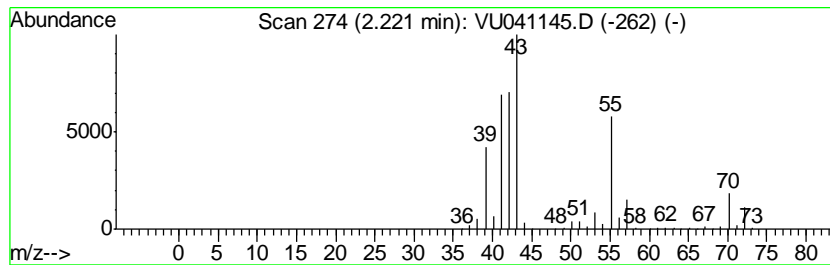
Quant Method : Z:\VOASRV\HPCHEM1\MSVOA_U\METHOD\SOMUTR102620WMA.M
 Quant Title : TRACE VOA SOM01.0

TIC Library : C:\DATABASE\NIST11.L
 TIC Integration Parameters: LSCINT.P

 Peak Number 3 (DEL) Alkane: Straight-Chai... Concentration Rank 4

R.T.	EstConc	Area	Relative to ISTD	R.T.
2.22	15.49 ug/L	3810380	1,4-Difluorobenzene	6.26

Hit#	of	Tentative ID	MW	MolForm	CAS#	Qual
1	5	Pentane	72	C5H12	000109-66-0	80
2		Pentane	72	C5H12	000109-66-0	72
3		Pentane	72	C5H12	000109-66-0	64
4		Pentane	72	C5H12	000109-66-0	53
5		Cyclopropane, ethyl-	70	C5H10	001191-96-4	49



Data Path : Z:\VOASRV\HPCHEM1\MSVOA U\DATA\VU110920\
 Data File : VU041145.D
 Acq On : 09 Nov 2020 16:55
 Operator : SY/MD
 Sample : L4646-12
 Misc : 25.0mL/MSVOA U/WATER
 ALS Vial : 14 Sample Multiplier: 1

Instrument :
 MSVOA_U
 ClientSampled :
 GB0T6

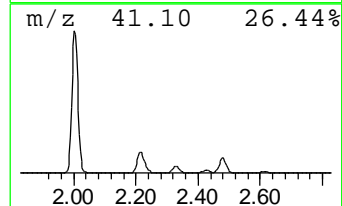
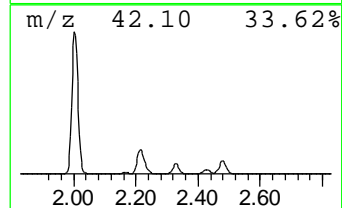
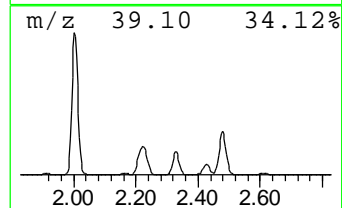
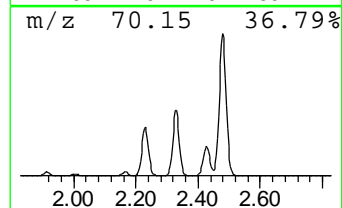
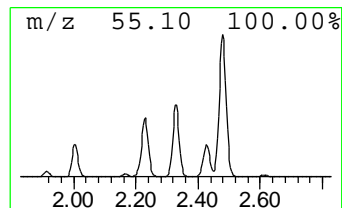
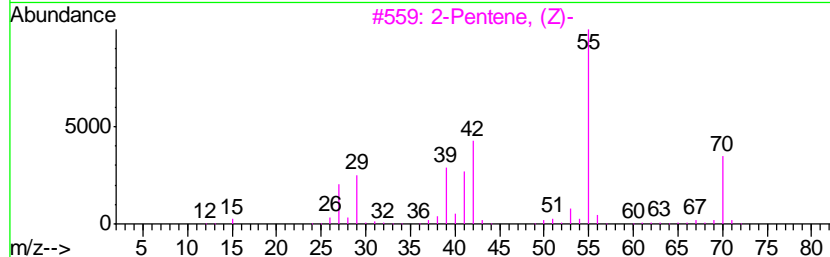
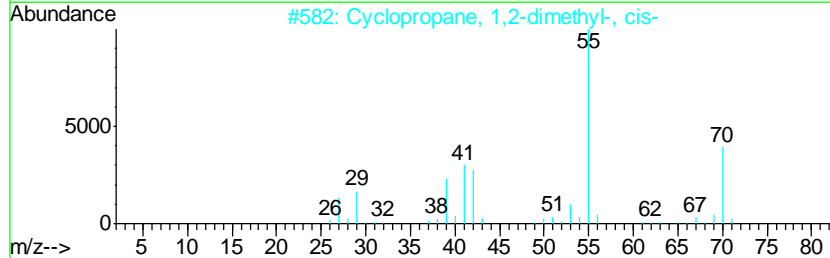
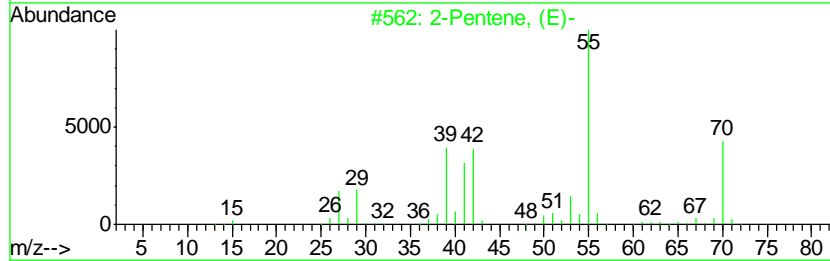
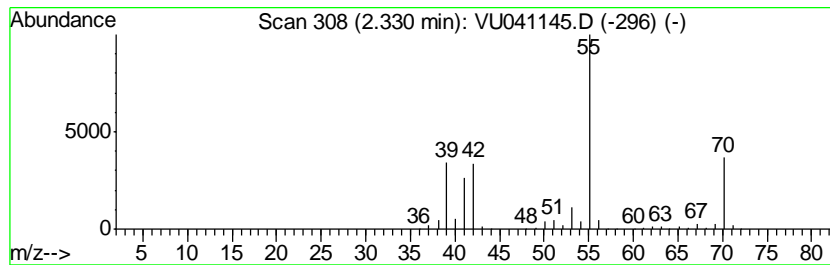
Quant Method : Z:\VOASRV\HPCHEM1\MSVOA_U\METHOD\SOMUTR102620WMA.M
 Quant Title : TRACE VOA SOM01.0

TIC Library : C:\DATABASE\NIST11.L
 TIC Integration Parameters: LSCINT.P

 Peak Number 4 (DEL) Alkane: Straight-Chai... Concentration Rank 10

R.T.	EstConc	Area	Relative to ISTD	R.T.
2.33	7.29 ug/L	1792710	1,4-Difluorobenzene	6.26

Hit#	of	Tentative ID	MW	MolForm	CAS#	Qual
1	5	2-Pentene, (E)-	70	C5H10	000646-04-8	93
2		Cyclopropane, 1,2-dimethyl-, cis-	70	C5H10	000930-18-7	90
3		2-Pentene, (Z)-	70	C5H10	000627-20-3	90
4		2-Pentene	70	C5H10	000109-68-2	87
5		2-Butene, 2-methyl-	70	C5H10	000513-35-9	87



Data Path : Z:\VOASRV\HPCHEM1\MSVOA U\DATA\VU110920\
 Data File : VU041145.D
 Acq On : 09 Nov 2020 16:55
 Operator : SY/MD
 Sample : L4646-12
 Misc : 25.0mL/MSVOA U/WATER
 ALS Vial : 14 Sample Multiplier: 1

Instrument :
 MSVOA_U
 ClientSampled :
 GB0T6

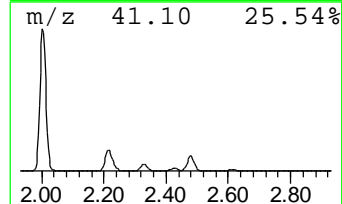
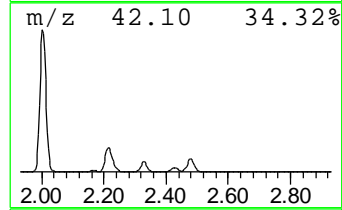
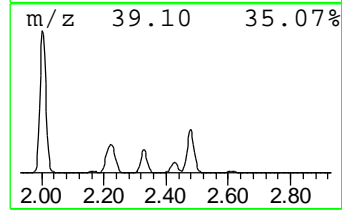
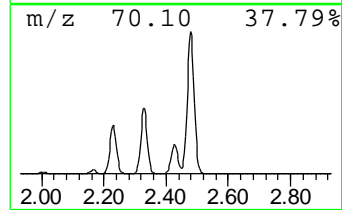
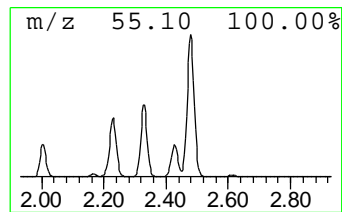
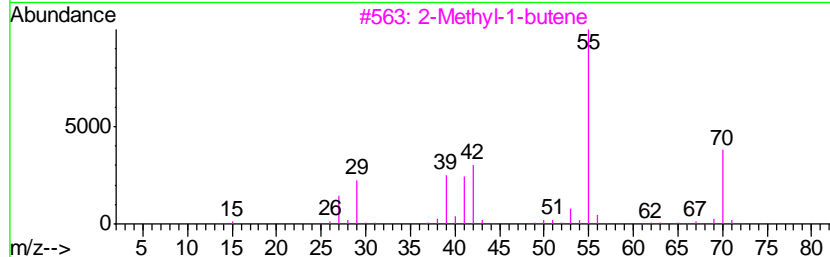
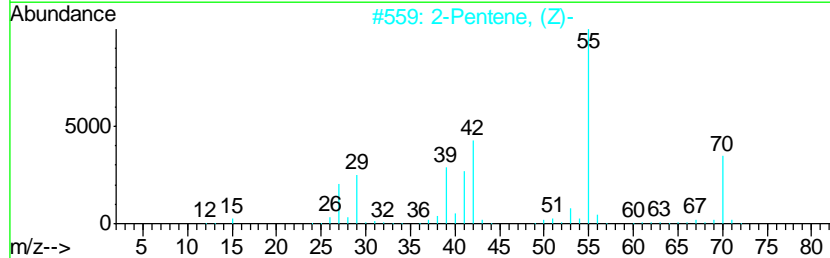
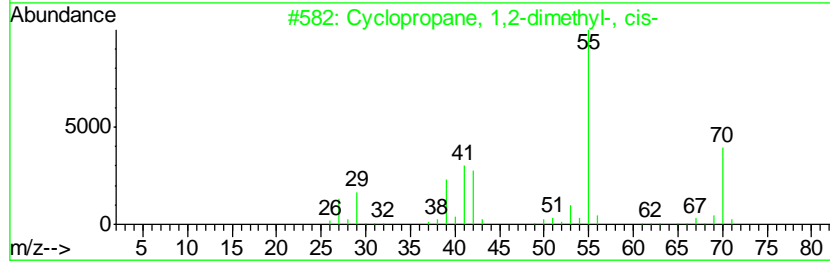
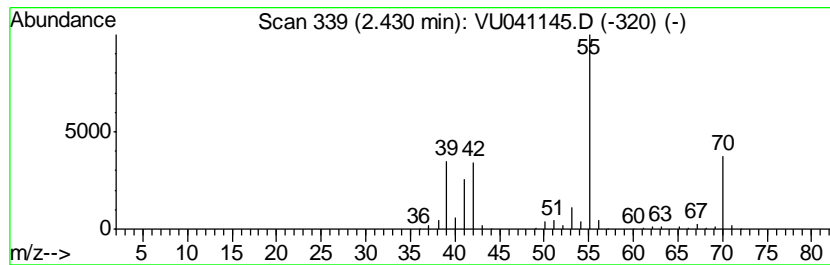
Quant Method : Z:\VOASRV\HPCHEM1\MSVOA_U\METHOD\SOMUTR102620WMA.M
 Quant Title : TRACE VOA SOM01.0

TIC Library : C:\DATABASE\NIST11.L
 TIC Integration Parameters: LSCINT.P

 Peak Number 5 (DEL) Alkane: Cyclic2.43 Concentration Rank 20

R.T.	EstConc	Area	Relative to ISTD	R.T.
2.43	3.66 ug/L	899492	1,4-Difluorobenzene	6.26

Hit#	of	Tentative ID	MW	MolForm	CAS#	Qual
1	5	Cyclopropane, 1,2-dimethyl-, cis-	70	C5H10	000930-18-7	90
2		2-Pentene, (Z)-	70	C5H10	000627-20-3	90
3		2-Methyl-1-butene	70	C5H10	000563-46-2	90
4		2-Butene, 2-methyl-	70	C5H10	000513-35-9	87
5		2-Pentene	70	C5H10	000109-68-2	87



Data Path : Z:\VOASRV\HPCHEM1\MSVOA U\DATA\VU110920\
 Data File : VU041145.D
 Acq On : 09 Nov 2020 16:55
 Operator : SY/MD
 Sample : L4646-12
 Misc : 25.0mL/MSVOA U/WATER
 ALS Vial : 14 Sample Multiplier: 1

Instrument :
 MSVOA_U
 ClientSampleID :
 GB0T6

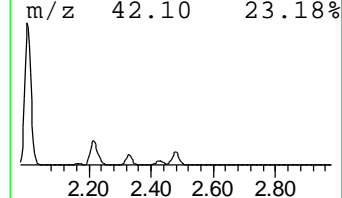
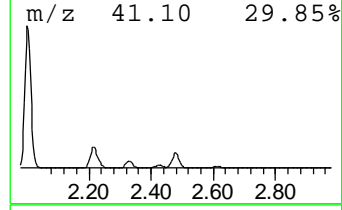
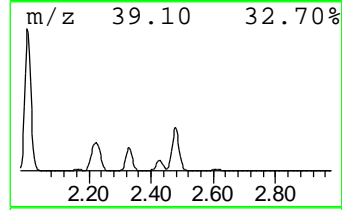
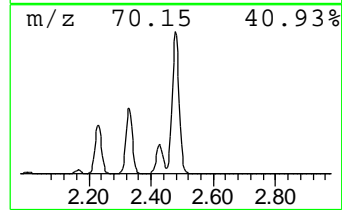
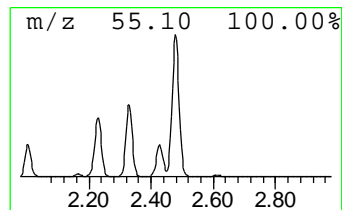
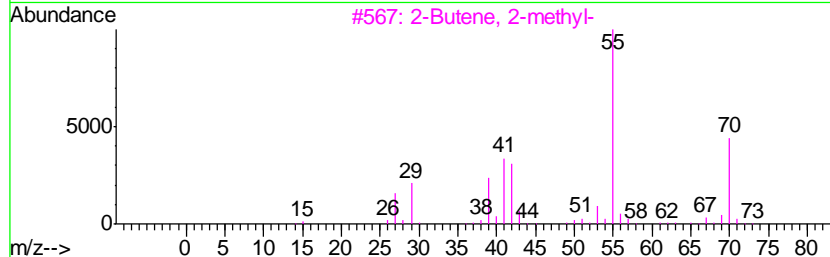
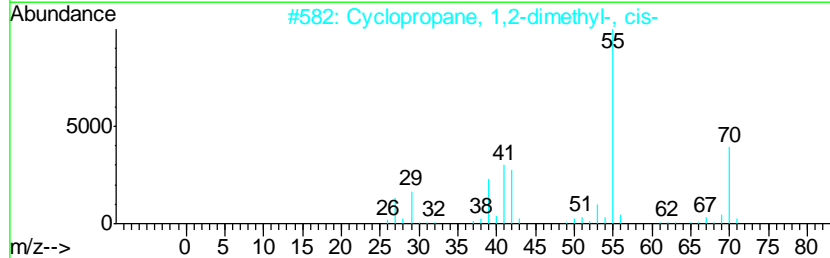
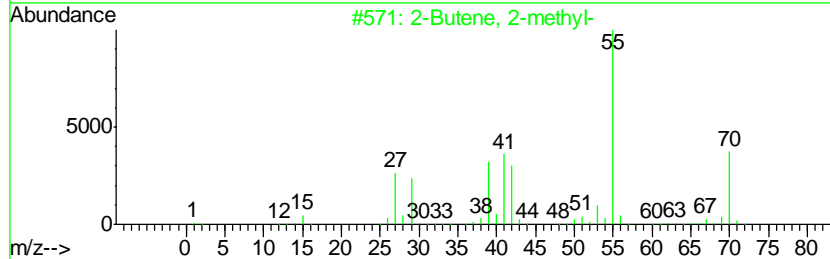
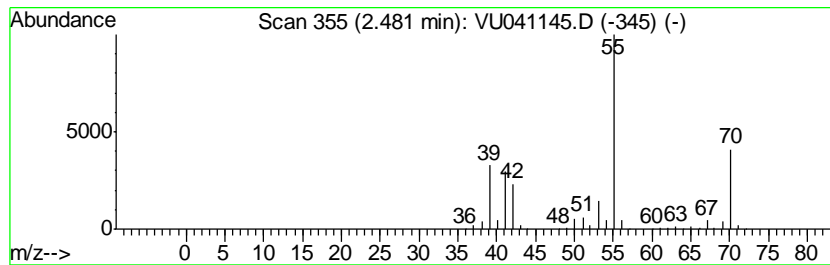
Quant Method : Z:\VOASRV\HPCHEM1\MSVOA_U\METHOD\SOMUTR102620WMA.M
 Quant Title : TRACE VOA SOM01.0

TIC Library : C:\DATABASE\NIST11.L
 TIC Integration Parameters: LSCINT.P

 Peak Number 6 (DEL) Alkane: Straight-Chai... Concentration Rank 3

R.T.	EstConc	Area	Relative to ISTD	R.T.
2.48	15.85 ug/L	3899980	1,4-Difluorobenzene	6.26

Hit#	of	Tentative ID	MW	MolForm	CAS#	Qual
1	5	2-Butene, 2-methyl-	70	C5H10	000513-35-9	91
2		Cyclopropane, 1,2-dimethyl-, cis-	70	C5H10	000930-18-7	91
3		2-Butene, 2-methyl-	70	C5H10	000513-35-9	90
4		Cyclopropane, 1,2-dimethyl-, trans-	70	C5H10	002402-06-4	87
5		2-Pentene, (E)-	70	C5H10	000646-04-8	86



Data Path : Z:\VOASRV\HPCHEM1\MSVOA U\DATA\VU110920\
 Data File : VU041145.D
 Acq On : 09 Nov 2020 16:55
 Operator : SY/MD
 Sample : L4646-12
 Misc : 25.0mL/MSVOA U/WATER
 ALS Vial : 14 Sample Multiplier: 1

Instrument :
 MSVOA_U
 ClientSampled :
 GB0T6

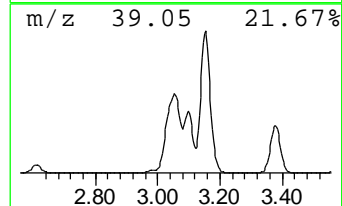
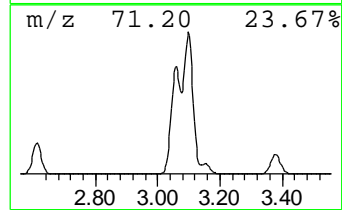
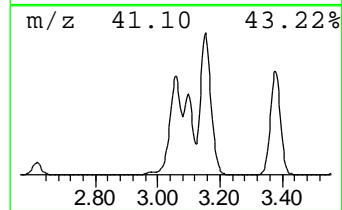
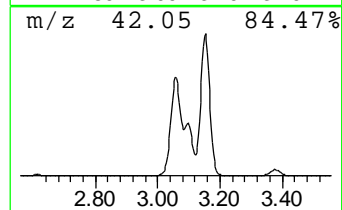
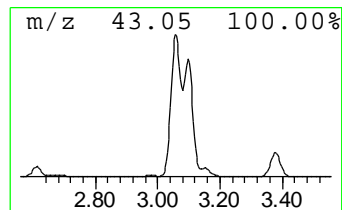
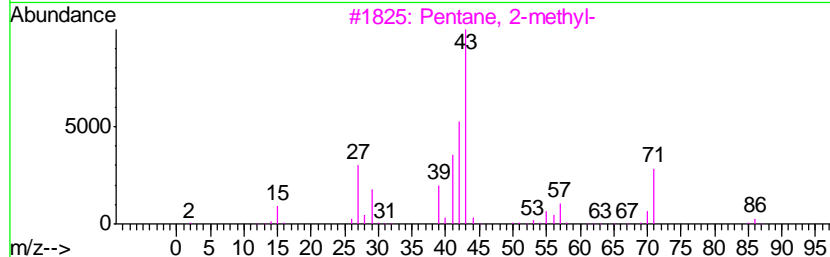
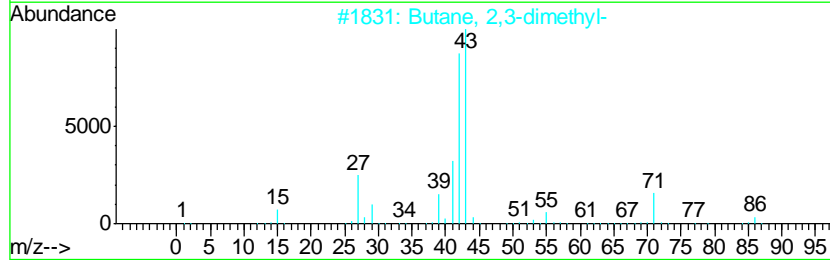
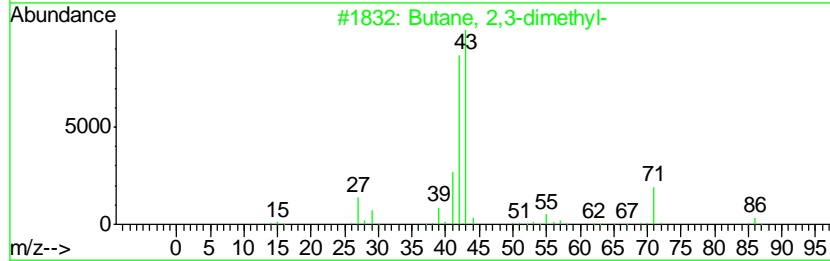
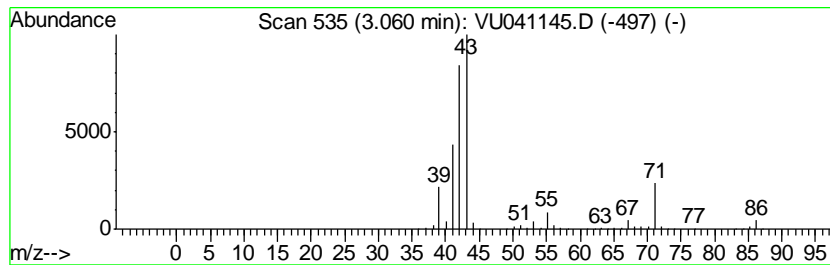
Quant Method : Z:\VOASRV\HPCHEM1\MSVOA_U\METHOD\SOMUTR102620WMA.M
 Quant Title : TRACE VOA SOM01.0

TIC Library : C:\DATABASE\NIST11.L
 TIC Integration Parameters: LSCINT.P

 Peak Number 7 (DEL) Alkane: Straight-Chai... Concentration Rank 6

R.T.	EstConc	Area	Relative to ISTD	R.T.
3.06	13.50 ug/L	3322470	1,4-Difluorobenzene	6.26

Hit#	of	Tentative ID	MW	MolForm	CAS#	Qual
1	5	Butane, 2,3-dimethyl-	86	C6H14	000079-29-8	86
2		Butane, 2,3-dimethyl-	86	C6H14	000079-29-8	80
3		Pentane, 2-methyl-	86	C6H14	000107-83-5	50
4		Butane, 2,3-dimethyl-	86	C6H14	000079-29-8	49
5		Butane, 2,3-dimethyl-	86	C6H14	000079-29-8	47



Data Path : Z:\VOASRV\HPCHEM1\MSVOA U\DATA\VU110920\
 Data File : VU041145.D
 Acq On : 09 Nov 2020 16:55
 Operator : SY/MD
 Sample : L4646-12
 Misc : 25.0mL/MSVOA U/WATER
 ALS Vial : 14 Sample Multiplier: 1

Instrument :
 MSVOA_U
 ClientSampled :
 GB0T6

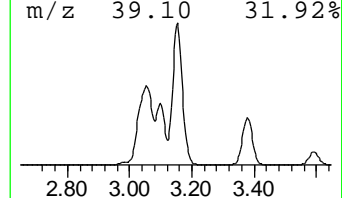
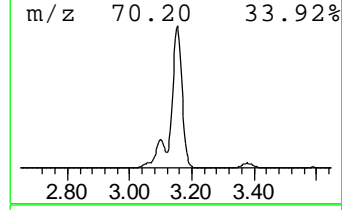
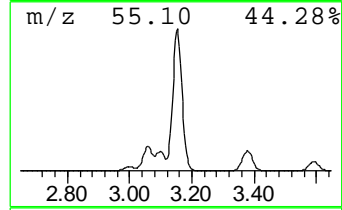
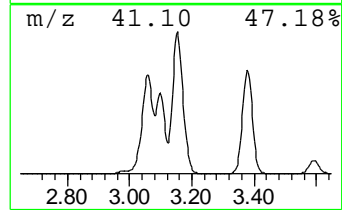
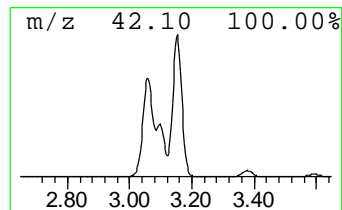
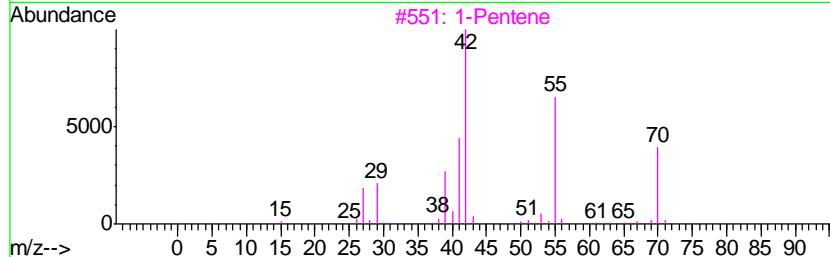
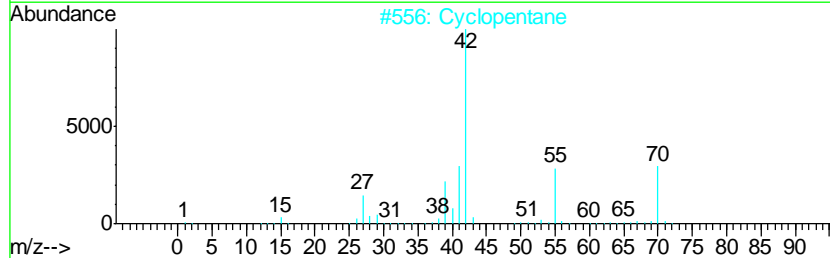
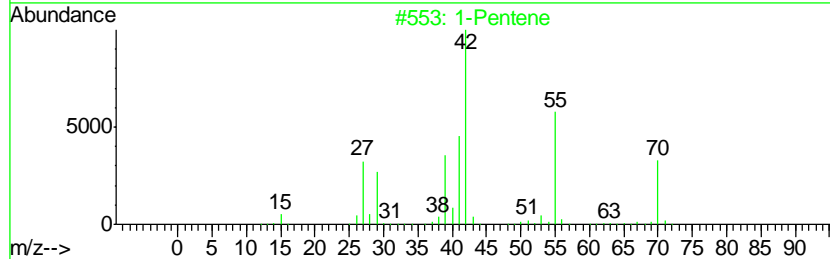
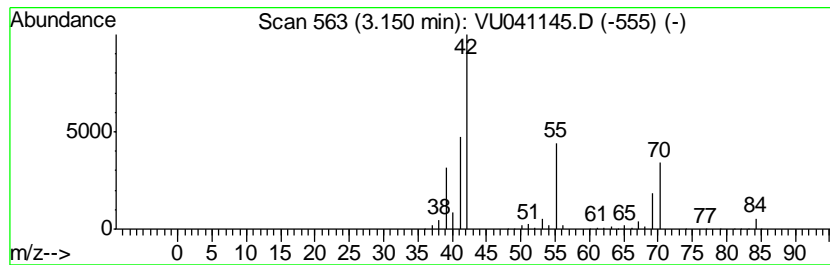
Quant Method : Z:\VOASRV\HPCHEM1\MSVOA_U\METHOD\SOMUTR102620WMA.M
 Quant Title : TRACE VOA SOM01.0

TIC Library : C:\DATABASE\NIST11.L
 TIC Integration Parameters: LSCINT.P

 Peak Number 8 (DEL) Alkane: Straight-Chai... Concentration Rank 7

R.T.	EstConc	Area	Relative to ISTD	R.T.
3.15	13.21 ug/L	3249830	1,4-Difluorobenzene	6.26

Hit#	of	Tentative ID	MW	MolForm	CAS#	Qual
1	5	1-Pentene	70	C5H10	000109-67-1	80
2		Cyclopentane	70	C5H10	000287-92-3	72
3		1-Pentene	70	C5H10	000109-67-1	64
4		Cyclobutane, methyl-	70	C5H10	000598-61-8	45
5		Cyclopropane, ethyl-	70	C5H10	001191-96-4	45



Data Path : Z:\VOASRV\HPCHEM1\MSVOA U\DATA\VU110920\
 Data File : VU041145.D
 Acq On : 09 Nov 2020 16:55
 Operator : SY/MD
 Sample : L4646-12
 Misc : 25.0mL/MSVOA U/WATER
 ALS Vial : 14 Sample Multiplier: 1

Instrument :
 MSVOA_U
 ClientSampled :
 GB0T6

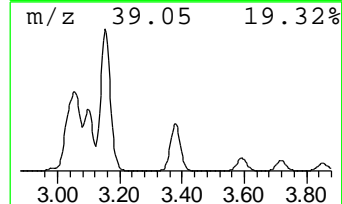
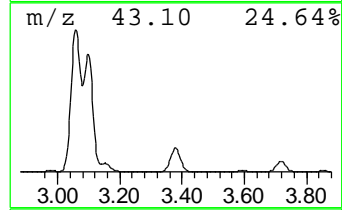
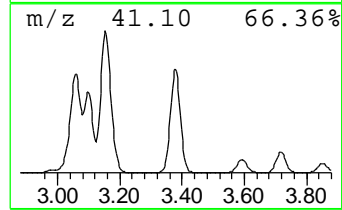
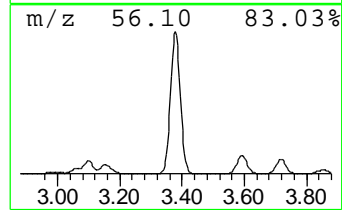
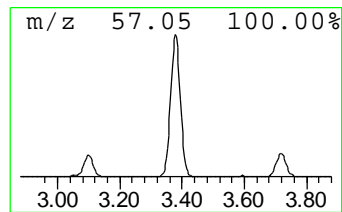
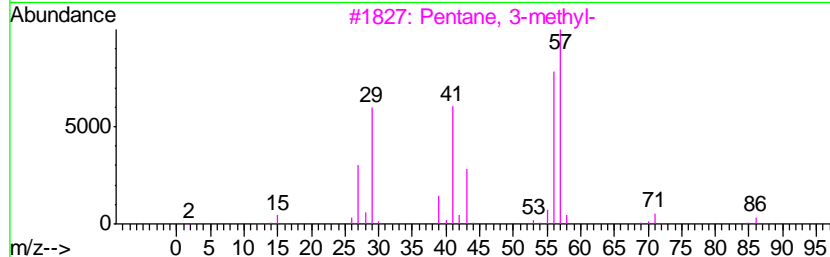
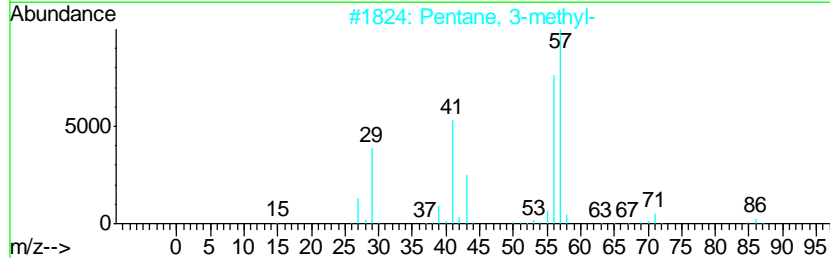
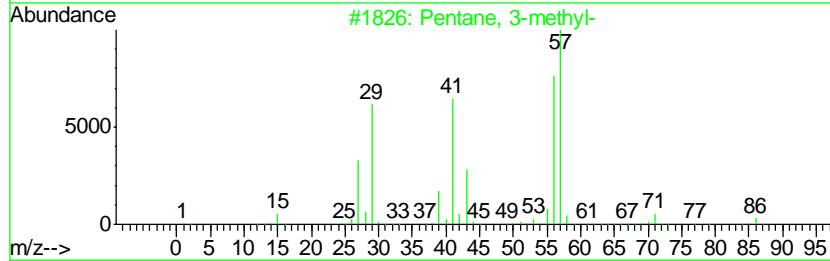
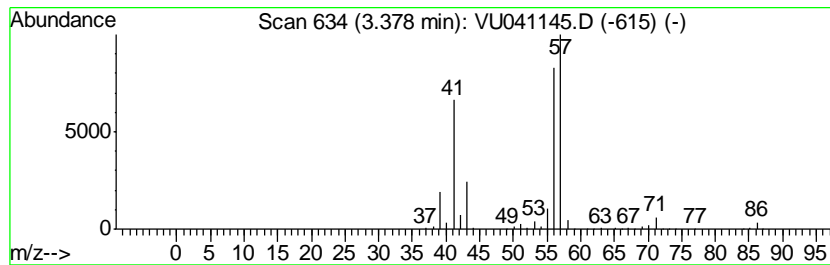
Quant Method : Z:\VOASRV\HPCHEM1\MSVOA_U\METHOD\SOMUTR102620WMA.M
 Quant Title : TRACE VOA SOM01.0

TIC Library : C:\DATABASE\NIST11.L
 TIC Integration Parameters: LSCINT.P

 Peak Number 9 (DEL) Alkane: Straight-Chai... Concentration Rank 9

R.T.	EstConc	Area	Relative to ISTD	R.T.
3.38	7.85 ug/L	1931420	1,4-Difluorobenzene	6.26

Hit#	of	Tentative ID	MW	MolForm	CAS#	Qual
1	5	Pentane, 3-methyl-	86	C6H14	000096-14-0	91
2		Pentane, 3-methyl-	86	C6H14	000096-14-0	91
3		Pentane, 3-methyl-	86	C6H14	000096-14-0	90
4		Hexane, 2,2,3-trimethyl-	128	C9H20	016747-25-4	78
5		Hexane, 2,2,3-trimethyl-	128	C9H20	016747-25-4	64



Data Path : Z:\VOASRV\HPCHEM1\MSVOA U\DATA\VU110920\
 Data File : VU041145.D
 Acq On : 09 Nov 2020 16:55
 Operator : SY/MD
 Sample : L4646-12
 Misc : 25.0mL/MSVOA U/WATER
 ALS Vial : 14 Sample Multiplier: 1

Instrument :
 MSVOA_U
 ClientSampled :
 GB0T6

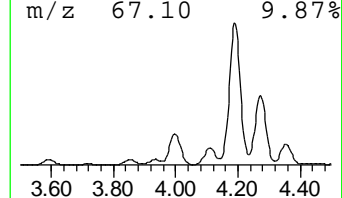
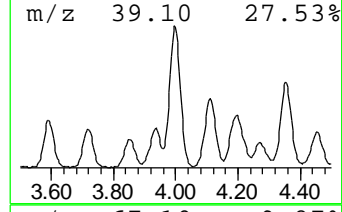
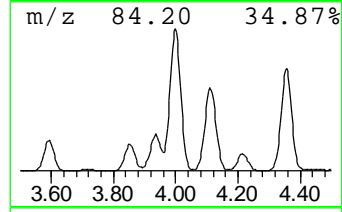
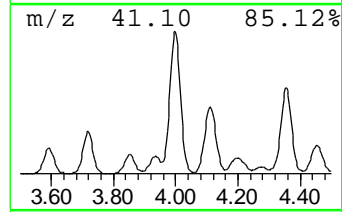
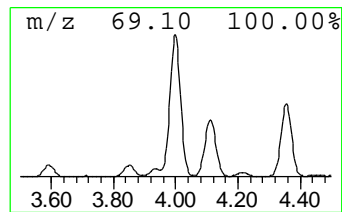
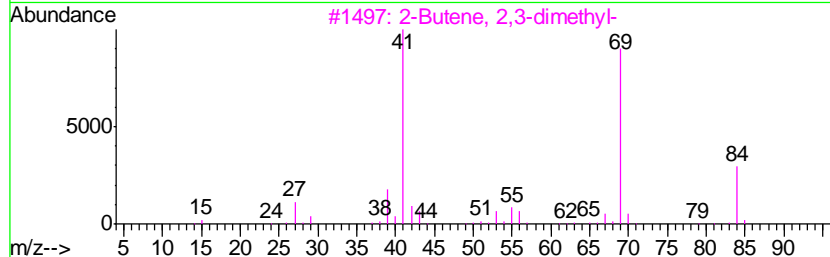
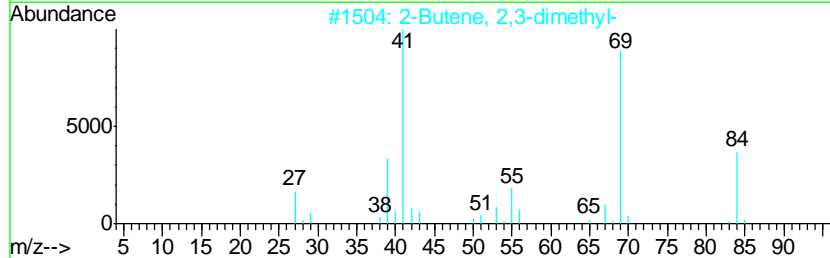
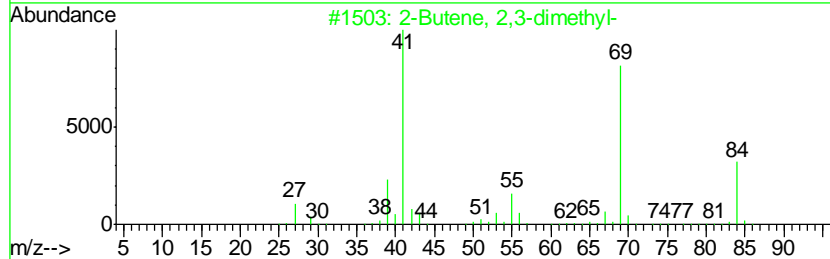
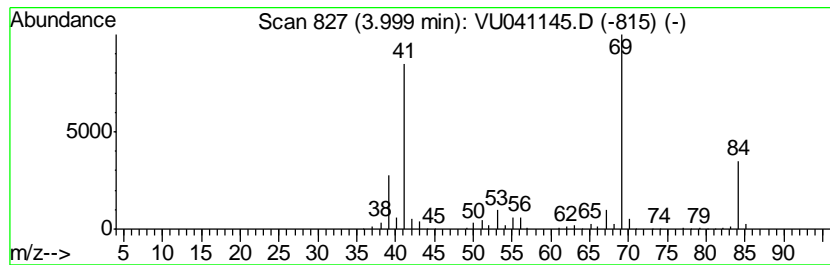
Quant Method : Z:\VOASRV\HPCHEM1\MSVOA_U\METHOD\SOMUTR102620WMA.M
 Quant Title : TRACE VOA SOM01.0

TIC Library : C:\DATABASE\NIST11.L
 TIC Integration Parameters: LSCINT.P

 Peak Number 10 (DEL) Alkane: Straight-Chai... Concentration Rank 17

R.T.	EstConc	Area	Relative to ISTD	R.T.
4.00	4.52 ug/L	1111520	1,4-Difluorobenzene	6.26

Hit#	of	Tentative ID	MW	MolForm	CAS#	Qual
1	5	2-Butene, 2,3-dimethyl-	84	C6H12	000563-79-1	91
2		2-Butene, 2,3-dimethyl-	84	C6H12	000563-79-1	91
3		2-Butene, 2,3-dimethyl-	84	C6H12	000563-79-1	90
4		2-Pentene, 4-methyl-, (Z)-	84	C6H12	000691-38-3	87
5		2-Pentene, 3-methyl-, (Z)-	84	C6H12	000922-62-3	87



Data Path : Z:\VOASRV\HPCHEM1\MSVOA U\DATA\VU110920\
 Data File : VU041145.D
 Acq On : 09 Nov 2020 16:55
 Operator : SY/MD
 Sample : L4646-12
 Misc : 25.0mL/MSVOA U/WATER
 ALS Vial : 14 Sample Multiplier: 1

Instrument :
 MSVOA_U
 ClientSampleID :
 GB0T6

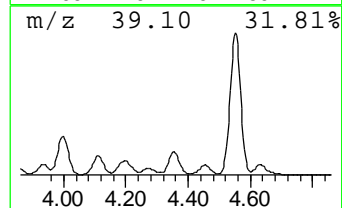
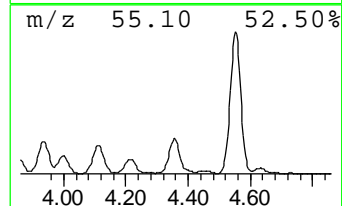
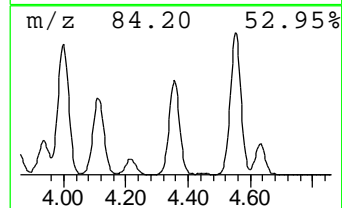
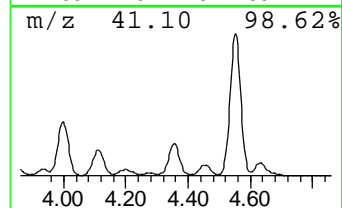
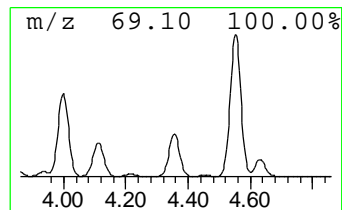
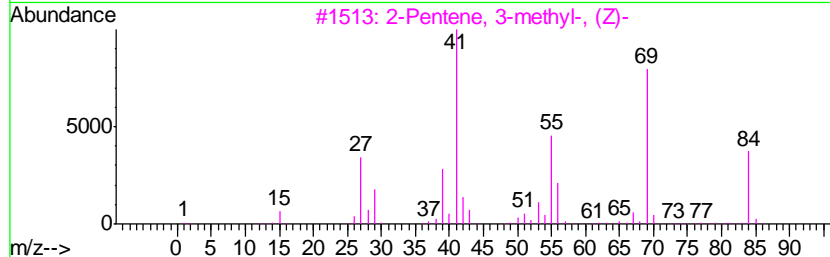
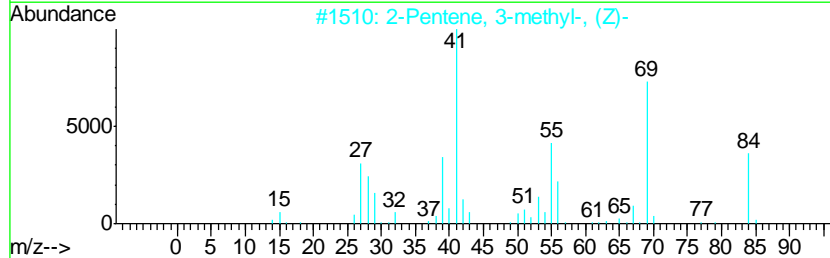
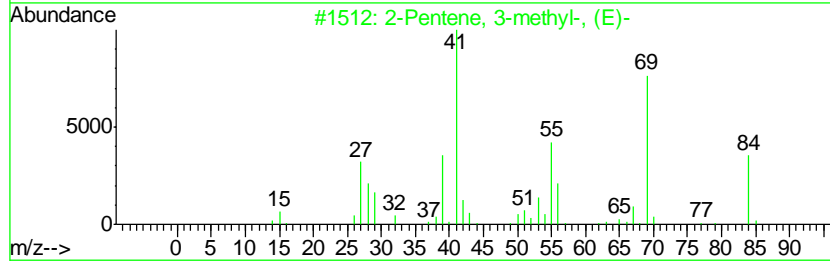
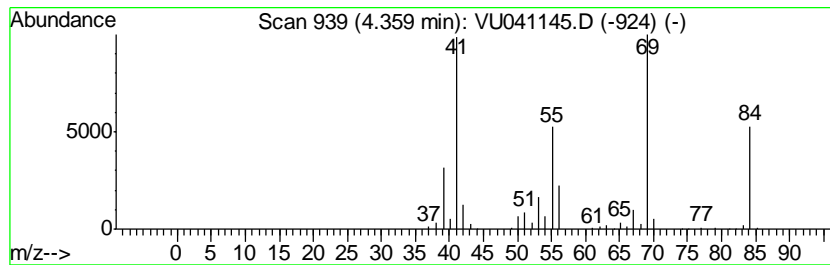
Quant Method : Z:\VOASRV\HPCHEM1\MSVOA_U\METHOD\SOMUTR102620WMA.M
 Quant Title : TRACE VOA SOM01.0

TIC Library : C:\DATABASE\NIST11.L
 TIC Integration Parameters: LSCINT.P

 Peak Number 11 (DEL) Alkane: Straight-Chai... Concentration Rank 22

R.T.	EstConc	Area	Relative to ISTD	R.T.
4.36	2.98 ug/L	733961	1,4-Difluorobenzene	6.26

Hit#	of	Tentative ID	MW	MolForm	CAS#	Qual
1	5	2-Pentene, 3-methyl-, (E)-	84	C6H12	000616-12-6	95
2		2-Pentene, 3-methyl-, (Z)-	84	C6H12	000922-62-3	94
3		2-Pentene, 3-methyl-, (Z)-	84	C6H12	000922-62-3	91
4		2-Pentene, 3-methyl-, (E)-	84	C6H12	000616-12-6	91
5		2-Pentene, 3-methyl-, (E)-	84	C6H12	000616-12-6	91



Data Path : Z:\VOASRV\HPCHEM1\MSVOA U\DATA\VU110920\
 Data File : VU041145.D
 Acq On : 09 Nov 2020 16:55
 Operator : SY/MD
 Sample : L4646-12
 Misc : 25.0mL/MSVOA U/WATER
 ALS Vial : 14 Sample Multiplier: 1

Instrument :
 MSVOA_U
 ClientSampled :
 GB0T6

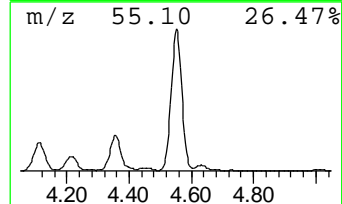
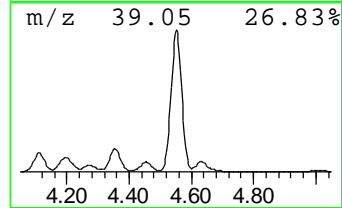
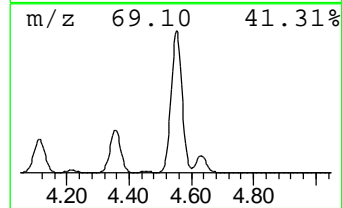
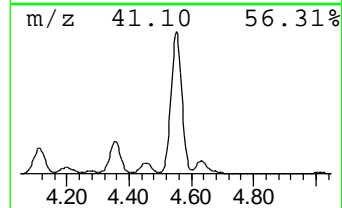
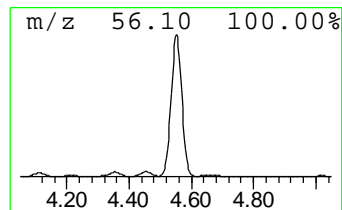
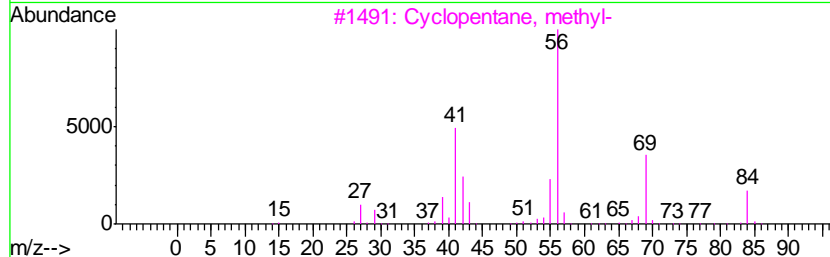
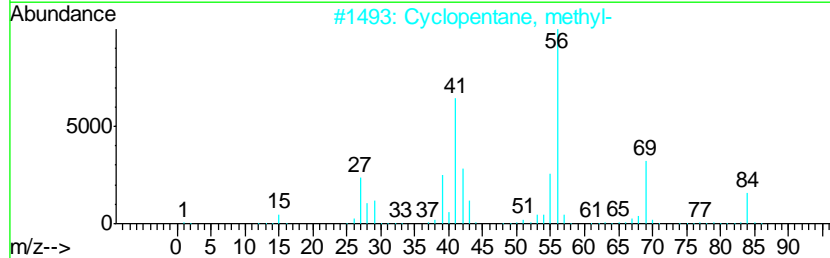
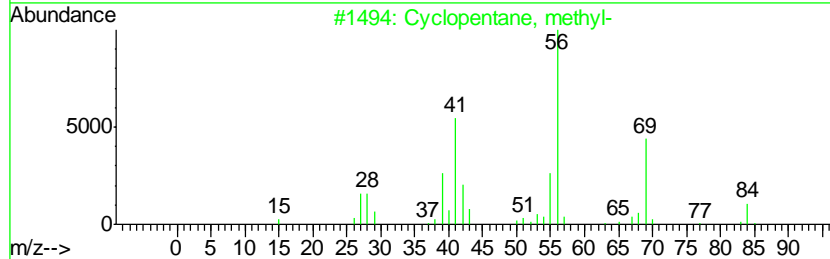
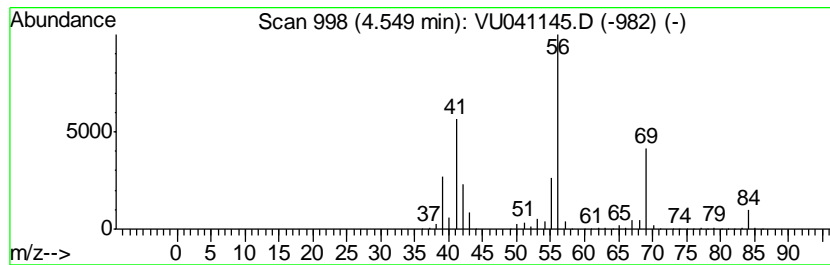
Quant Method : Z:\VOASRV\HPCHEM1\MSVOA_U\METHOD\SOMUTR102620WMA.M
 Quant Title : TRACE VOA SOM01.0

TIC Library : C:\DATABASE\NIST11.L
 TIC Integration Parameters: LSCINT.P

 Peak Number 12 (DEL) Alkane: Cyclic4.55 Concentration Rank 2

R.T.	EstConc	Area	Relative to ISTD	R.T.
4.55	17.87 ug/L	4395760	1,4-Difluorobenzene	6.26

Hit#	of	Tentative ID	MW	MolForm	CAS#	Qual
1	5	Cyclopentane, methyl-	84	C6H12	000096-37-7	94
2		Cyclopentane, methyl-	84	C6H12	000096-37-7	91
3		Cyclopentane, methyl-	84	C6H12	000096-37-7	78
4		Cyclohexane	84	C6H12	000110-82-7	78
5		1H-Tetrazole, 5-methyl-	84	C2H4N4	004076-36-2	72



Data Path : Z:\VOASRV\HPCHEM1\MSVOA U\DATA\VU110920\
 Data File : VU041145.D
 Acq On : 09 Nov 2020 16:55
 Operator : SY/MD
 Sample : L4646-12
 Misc : 25.0mL/MSVOA U/WATER
 ALS Vial : 14 Sample Multiplier: 1

Instrument :
 MSVOA_U
 ClientSampled :
 GB0T6

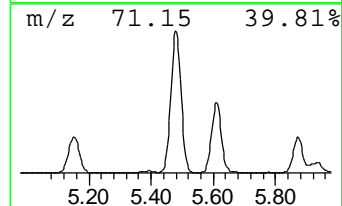
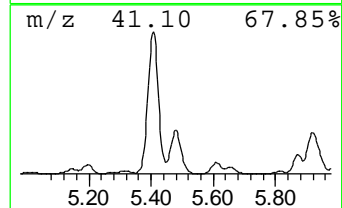
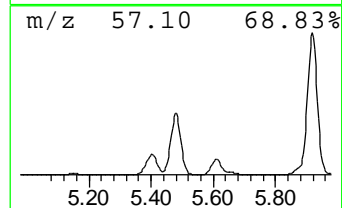
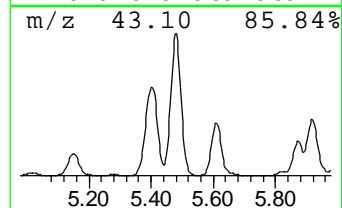
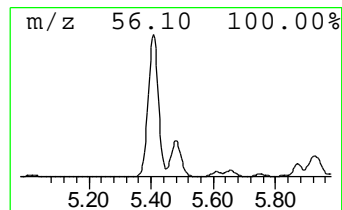
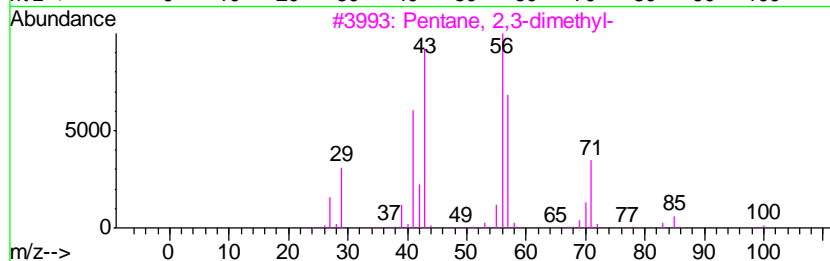
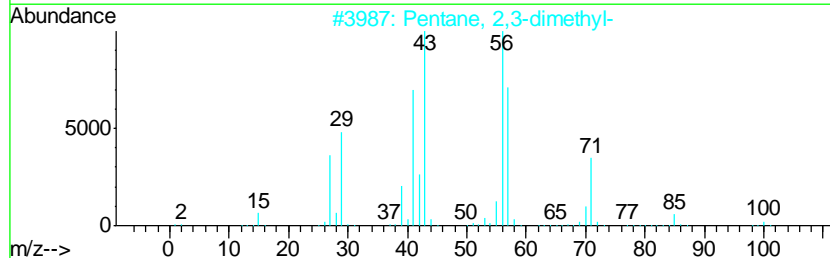
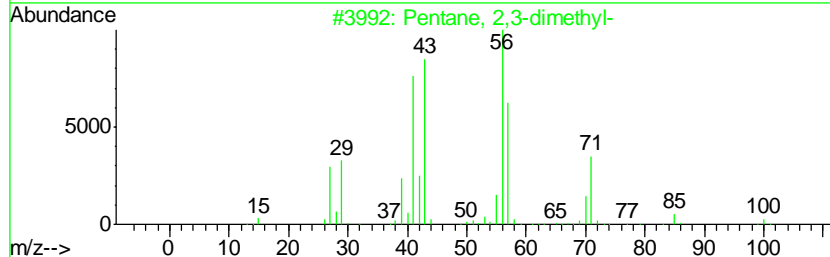
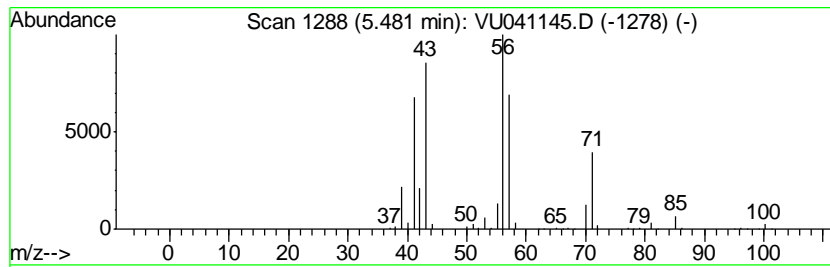
Quant Method : Z:\VOASRV\HPCHEM1\MSVOA_U\METHOD\SOMUTR102620WMA.M
 Quant Title : TRACE VOA SOM01.0

TIC Library : C:\DATABASE\NIST11.L
 TIC Integration Parameters: LSCINT.P

 Peak Number 13 (DEL) Alkane: Straight-Chai... Concentration Rank 19

R.T.	EstConc	Area	Relative to ISTD	R.T.
5.48	4.31 ug/L	1059370	1,4-Difluorobenzene	6.26

Hit#	of	Tentative ID	MW	MolForm	CAS#	Qual
1	5	Pentane, 2,3-dimethyl-	100	C7H16	000565-59-3	94
2		Pentane, 2,3-dimethyl-	100	C7H16	000565-59-3	91
3		Pentane, 2,3-dimethyl-	100	C7H16	000565-59-3	91
4		Pentane, 2,3-dimethyl-	100	C7H16	000565-59-3	91
5		Ethane, isocyanato-	71	C3H5NO	000109-90-0	42



Data Path : Z:\VOASRV\HPCHEM1\MSVOA U\DATA\VU110920\
 Data File : VU041145.D
 Acq On : 09 Nov 2020 16:55
 Operator : SY/MD
 Sample : L4646-12
 Misc : 25.0mL/MSVOA U/WATER
 ALS Vial : 14 Sample Multiplier: 1

Instrument :
 MSVOA_U
 ClientSampleID :
 GB0T6

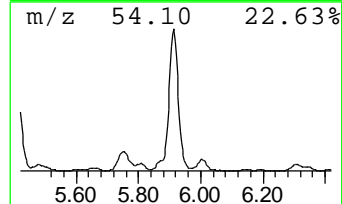
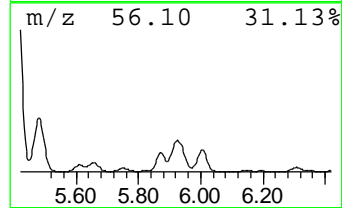
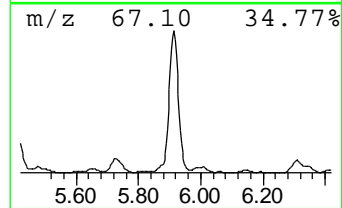
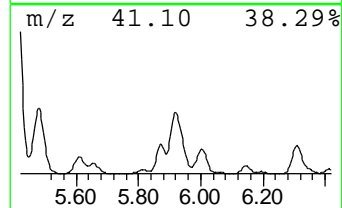
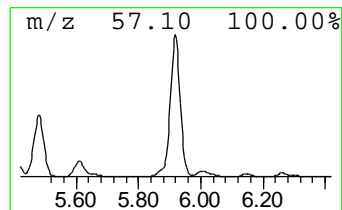
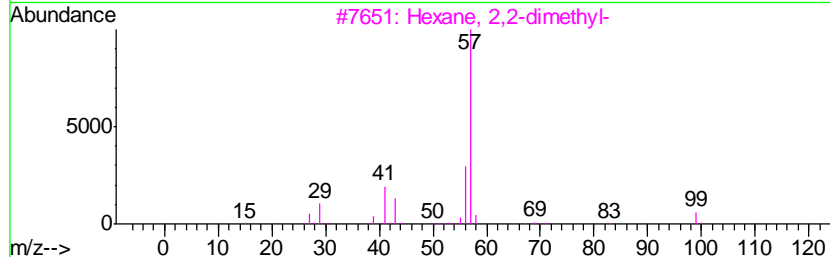
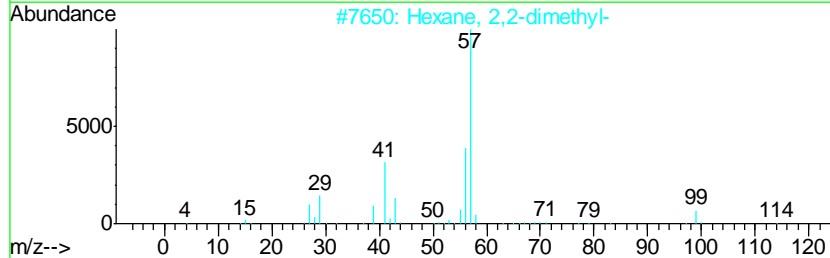
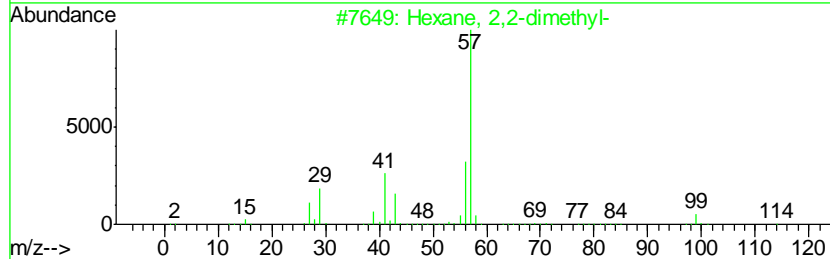
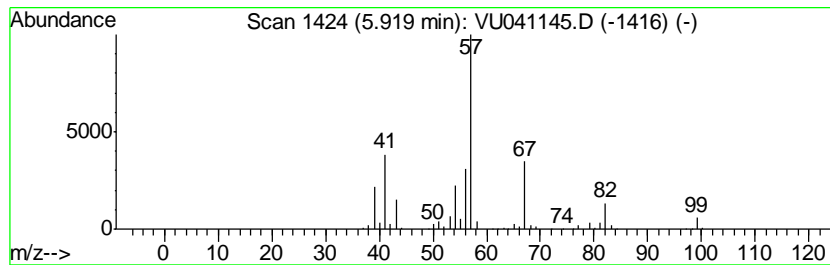
Quant Method : Z:\VOASRV\HPCHEM1\MSVOA_U\METHOD\SOMUTR102620WMA.M
 Quant Title : TRACE VOA SOM01.0

TIC Library : C:\DATABASE\NIST11.L
 TIC Integration Parameters: LSCINT.P

 Peak Number 14 (DEL) Alkane: Straight-Chai... Concentration Rank 14

R.T.	EstConc	Area	Relative to ISTD	R.T.
5.92	5.00 ug/L	1230180	1,4-Difluorobenzene	6.26

Hit#	of	Tentative ID	MW	MolForm	CAS#	Qual
1	5	Hexane, 2,2-dimethyl-	114	C8H18	000590-73-8	32
2		Hexane, 2,2-dimethyl-	114	C8H18	000590-73-8	32
3		Hexane, 2,2-dimethyl-	114	C8H18	000590-73-8	25
4		Butane, 2,2,3,3-tetramethyl-	114	C8H18	000594-82-1	25
5		Pentane, 2,2,4-trimethyl-	114	C8H18	000540-84-1	25



Data Path : Z:\VOASRV\HPCHEM1\MSVOA U\DATA\VU110920\
 Data File : VU041145.D
 Acq On : 09 Nov 2020 16:55
 Operator : SY/MD
 Sample : L4646-12
 Misc : 25.0mL/MSVOA U/WATER
 ALS Vial : 14 Sample Multiplier: 1

Instrument :
 MSVOA_U
 ClientSampled :
 GB0T6

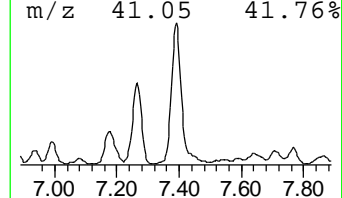
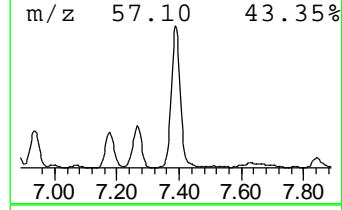
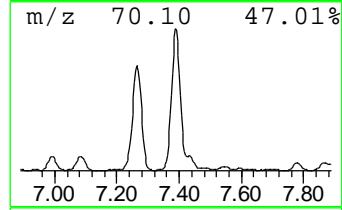
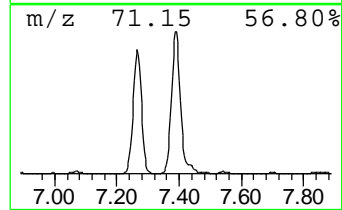
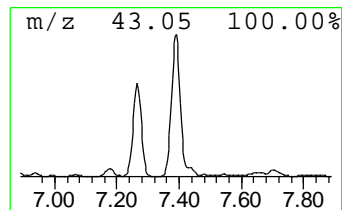
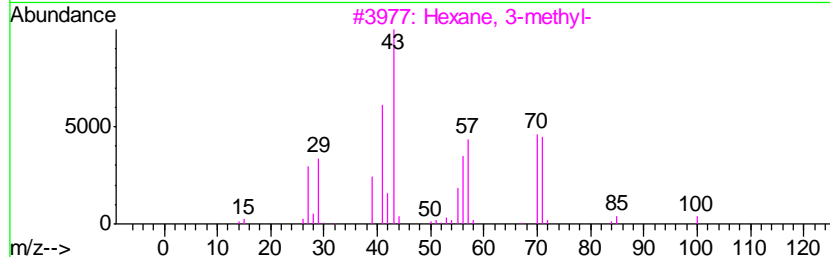
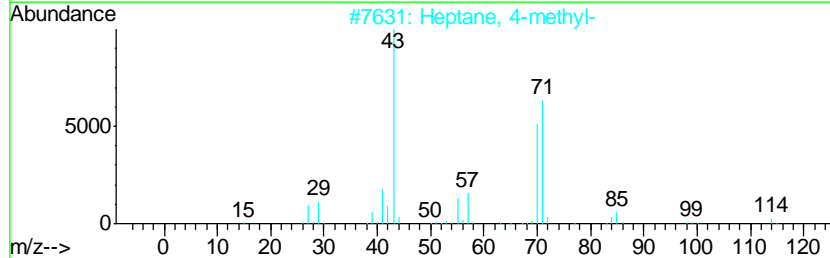
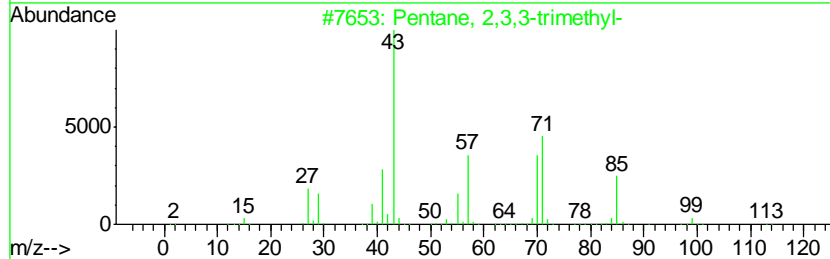
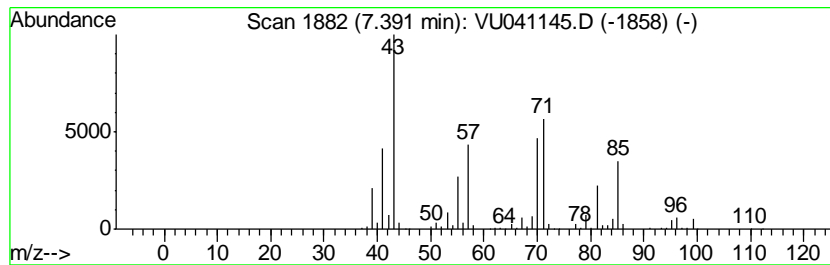
Quant Method : Z:\VOASRV\HPCHEM1\MSVOA_U\METHOD\SOMUTR102620WMA.M
 Quant Title : TRACE VOA SOM01.0

TIC Library : C:\DATABASE\NIST11.L
 TIC Integration Parameters: LSCINT.P

 Peak Number 15 (DEL) Alkane: Straight-Chai... Concentration Rank 16

R.T.	EstConc	Area	Relative to ISTD	R.T.
7.39	4.52 ug/L	1112810	1,4-Difluorobenzene	6.26

Hit#	of	Tentative ID	MW	MolForm	CAS#	Qual
1	5	Pentane, 2,3,3-trimethyl-	114	C8H18	000560-21-4	78
2		Heptane, 4-methyl-	114	C8H18	000589-53-7	59
3		Hexane, 3-methyl-	100	C7H16	000589-34-4	59
4		Hexane, 3-methyl-	100	C7H16	000589-34-4	53
5		Octane, 4-methyl-	128	C9H20	002216-34-4	53



Data Path : Z:\VOASRV\HPCHEM1\MSVOA U\DATA\VU110920\
 Data File : VU041145.D
 Acq On : 09 Nov 2020 16:55
 Operator : SY/MD
 Sample : L4646-12
 Misc : 25.0mL/MSVOA U/WATER
 ALS Vial : 14 Sample Multiplier: 1

Instrument :
 MSVOA_U
 ClientSampled :
 GB0T6

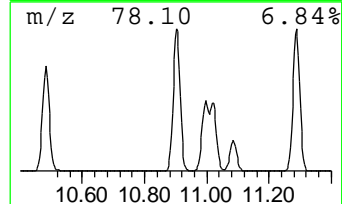
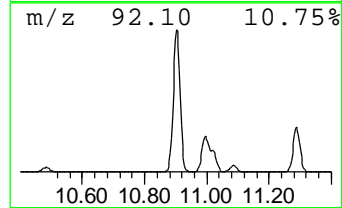
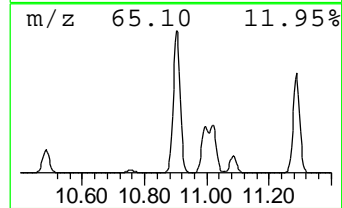
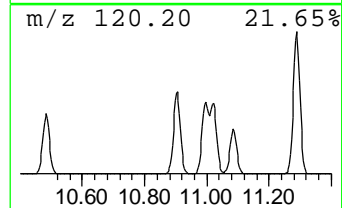
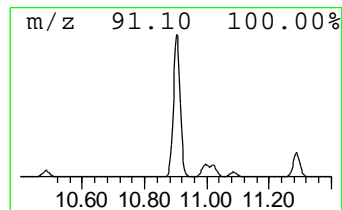
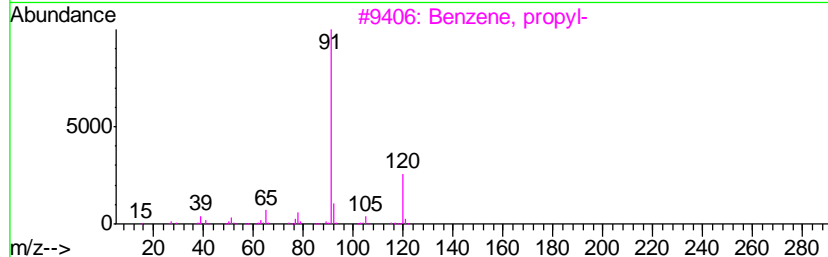
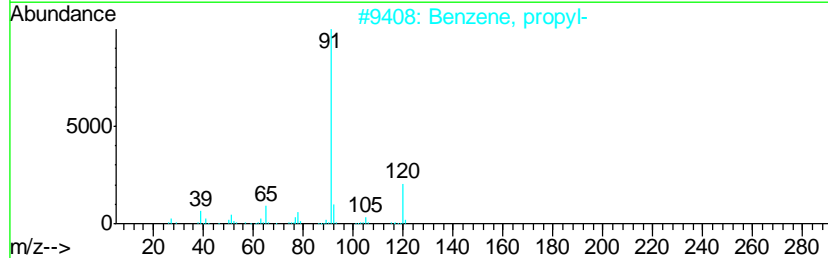
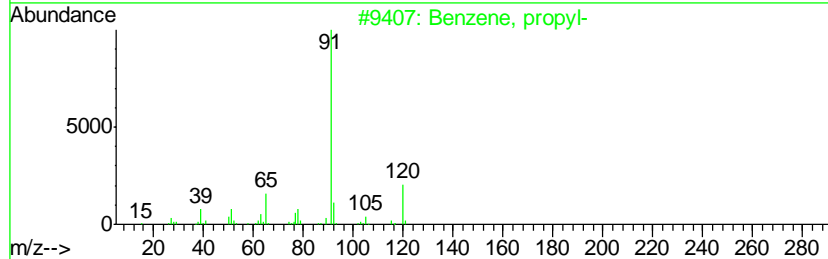
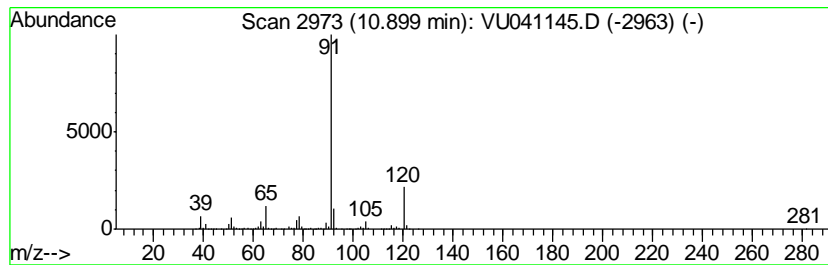
Quant Method : Z:\VOASRV\HPCHEM1\MSVOA_U\METHOD\SOMUTR102620WMA.M
 Quant Title : TRACE VOA SOM01.0

TIC Library : C:\DATABASE\NIST11.L
 TIC Integration Parameters: LSCINT.P

 Peak Number 16 Benzene, propyl- Concentration Rank 13

R.T.	EstConc	Area	Relative to ISTD	R.T.
10.90	5.40 ug/L	1389850	1,4-Dichlorobenzene-d4	11.81

Hit#	of	Tentative ID	MW	MolForm	CAS#	Qual
1	5	Benzene, propyl-	120	C9H12	000103-65-1	94
2		Benzene, propyl-	120	C9H12	000103-65-1	90
3		Benzene, propyl-	120	C9H12	000103-65-1	87
4		1,2-Ethanediamine, N,N'-bis(phen...	240	C16H20N2	000140-28-3	64
5		2,3,5-Trioxabicyclo[2.1.0]pentan...	254	C16H14O3	056247-48-4	50



Data Path : Z:\VOASRV\HPCHEM1\MSVOA U\DATA\VU110920\
 Data File : VU041145.D
 Acq On : 09 Nov 2020 16:55
 Operator : SY/MD
 Sample : L4646-12
 Misc : 25.0mL/MSVOA U/WATER
 ALS Vial : 14 Sample Multiplier: 1

Instrument :
 MSVOA_U
 ClientSampled :
 GB0T6

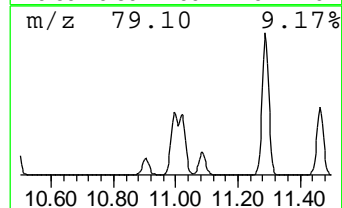
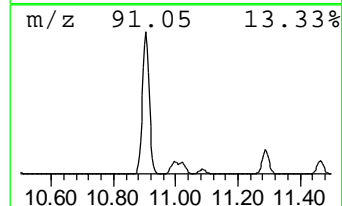
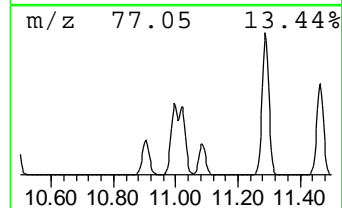
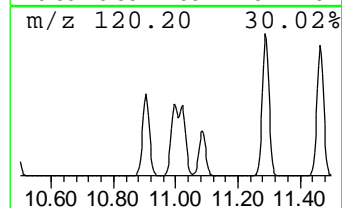
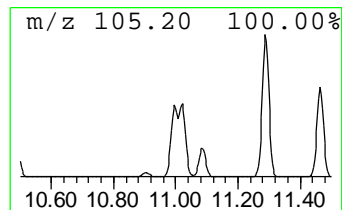
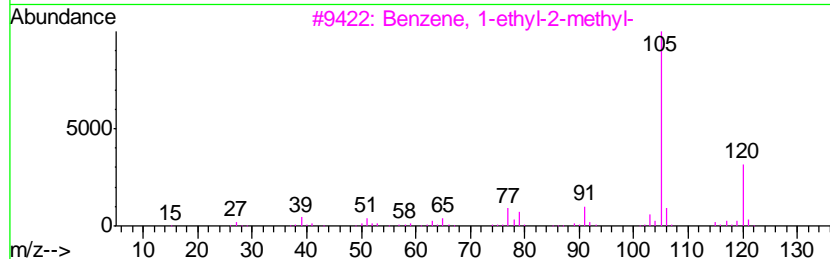
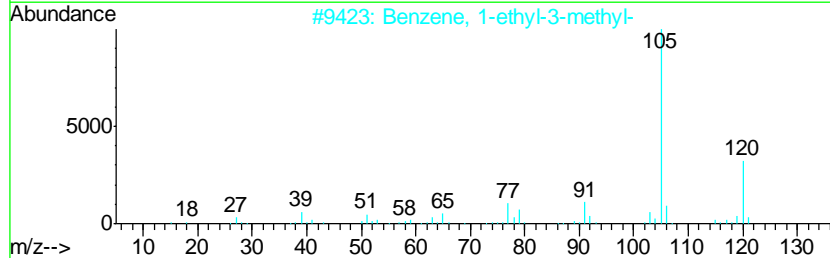
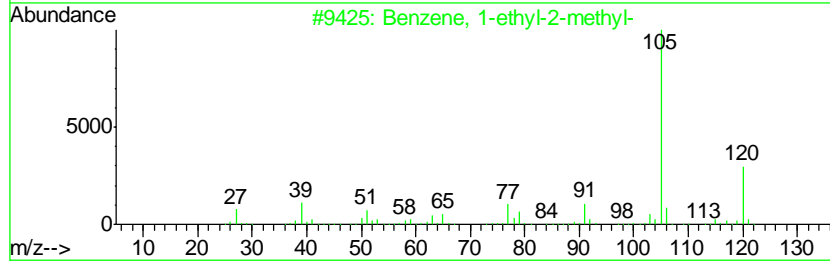
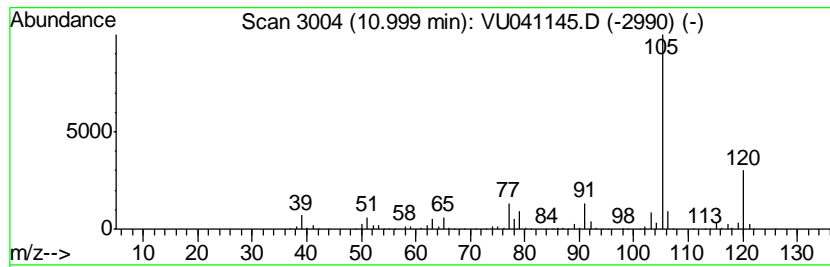
Quant Method : Z:\VOASRV\HPCHEM1\MSVOA_U\METHOD\SOMUTR102620WMA.M
 Quant Title : TRACE VOA SOM01.0

TIC Library : C:\DATABASE\NIST11.L
 TIC Integration Parameters: LSCINT.P

 Peak Number 17 Benzene, 1-ethyl-2-methyl- Concentration Rank 18

R.T.	EstConc	Area	Relative to ISTD	R.T.
11.00	4.43 ug/L	1140980	1,4-Dichlorobenzene-d4	11.81

Hit#	of	Tentative ID	MW	MolForm	CAS#	Qual
1	5	Benzene, 1-ethyl-2-methyl-	120	C9H12	000611-14-3	95
2		Benzene, 1-ethyl-3-methyl-	120	C9H12	000620-14-4	94
3		Benzene, 1-ethyl-2-methyl-	120	C9H12	000611-14-3	94
4		Benzene, 1-ethyl-3-methyl-	120	C9H12	000620-14-4	94
5		Benzene, 1-ethyl-4-methyl-	120	C9H12	000622-96-8	91



Data Path : Z:\VOASRV\HPCHEM1\MSVOA U\DATA\VU110920\
 Data File : VU041145.D
 Acq On : 09 Nov 2020 16:55
 Operator : SY/MD
 Sample : L4646-12
 Misc : 25.0mL/MSVOA U/WATER
 ALS Vial : 14 Sample Multiplier: 1

Instrument :
 MSVOA_U
 ClientSampleID :
 GB0T6

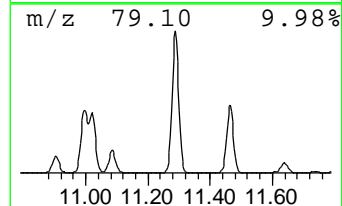
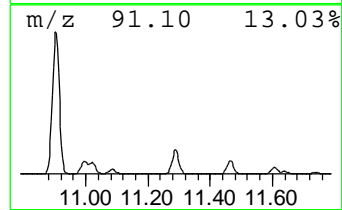
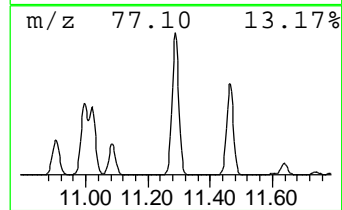
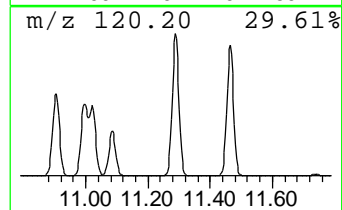
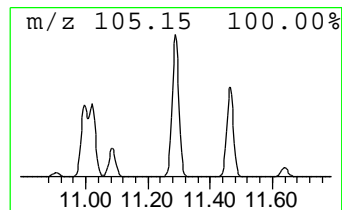
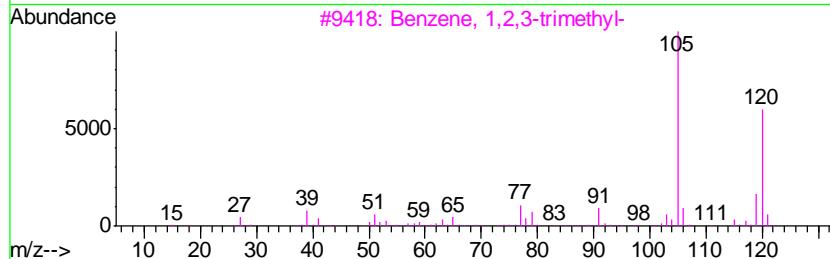
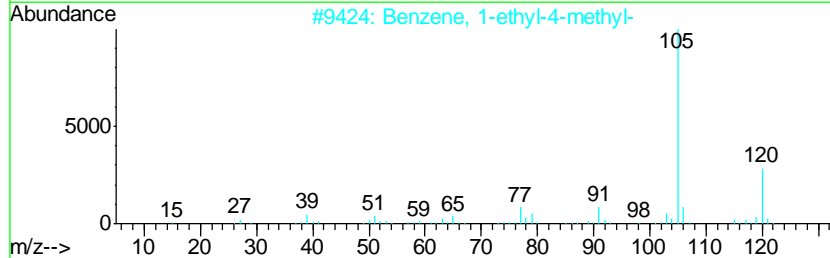
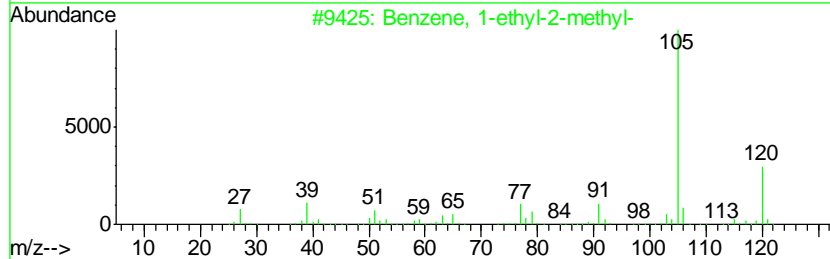
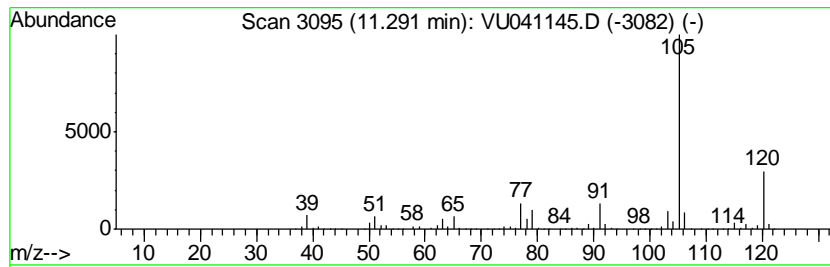
Quant Method : Z:\VOASRV\HPCHEM1\MSVOA_U\METHOD\SOMUTR102620WMA.M
 Quant Title : TRACE VOA SOM01.0

TIC Library : C:\DATABASE\NIST11.L
 TIC Integration Parameters: LSCINT.P

 Peak Number 18 Benzene, 1-ethyl-4-methyl- Concentration Rank 8

R.T.	EstConc	Area	Relative to ISTD	R.T.
11.29	8.66 ug/L	2230790	1,4-Dichlorobenzene-d4	11.81

Hit#	of	Tentative ID	MW	MolForm	CAS#	Qual
1	5	Benzene, 1-ethyl-2-methyl-	120	C9H12	000611-14-3	94
2		Benzene, 1-ethyl-4-methyl-	120	C9H12	000622-96-8	91
3		Benzene, 1,2,3-trimethyl-	120	C9H12	000526-73-8	91
4		Benzene, 1-ethyl-4-methyl-	120	C9H12	000622-96-8	91
5		Benzene, 1,2,4-trimethyl-	120	C9H12	000095-63-6	91



Data Path : Z:\VOASRV\HPCHEM1\MSVOA U\DATA\VU110920\
 Data File : VU041145.D
 Acq On : 09 Nov 2020 16:55
 Operator : SY/MD
 Sample : L4646-12
 Misc : 25.0mL/MSVOA U/WATER
 ALS Vial : 14 Sample Multiplier: 1

Instrument :
 MSVOA_U
 ClientSampleID :
 GB0T6

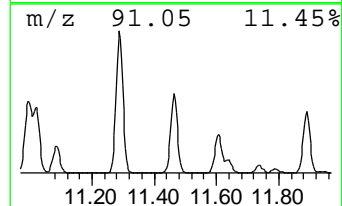
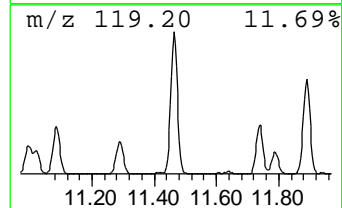
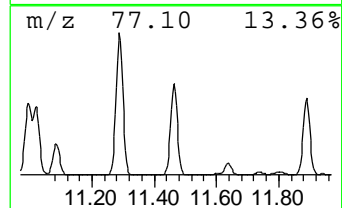
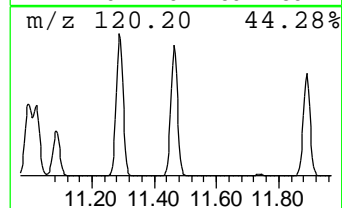
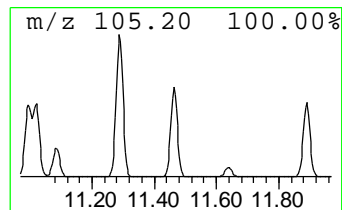
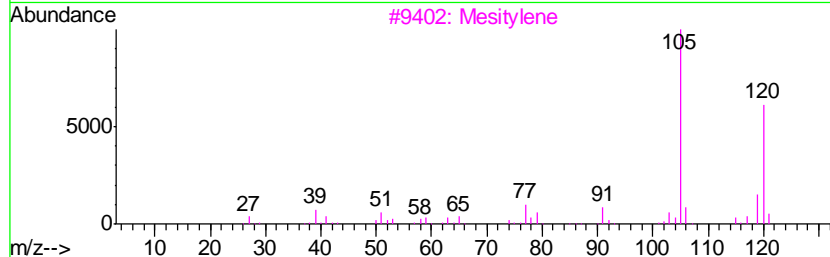
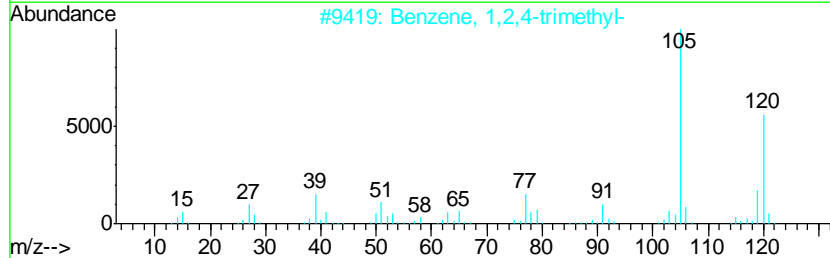
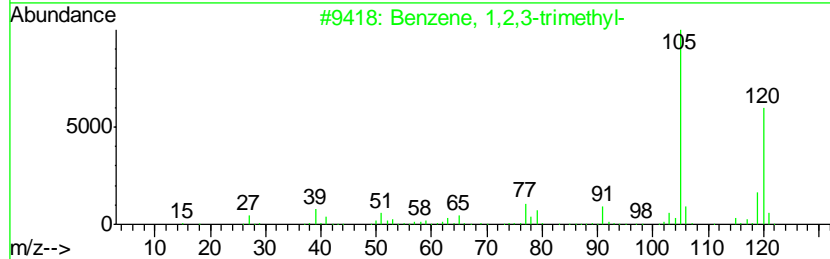
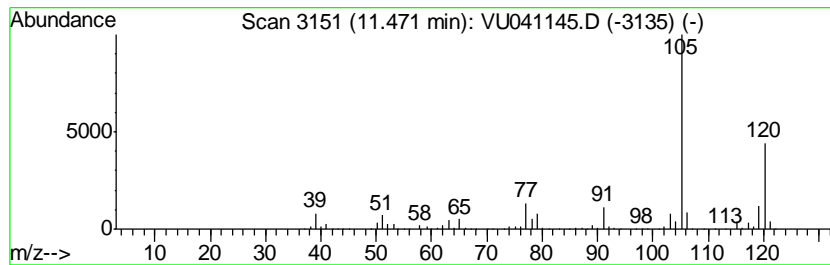
Quant Method : Z:\VOASRV\HPCHEM1\MSVOA_U\METHOD\SOMUTR102620WMA.M
 Quant Title : TRACE VOA SOM01.0

TIC Library : C:\DATABASE\NIST11.L
 TIC Integration Parameters: LSCINT.P

 Peak Number 19 Benzene, 1,2,3-trimethyl- Concentration Rank 11

R.T.	EstConc	Area	Relative to ISTD	R.T.
11.47	5.98 ug/L	1538770	1,4-Dichlorobenzene-d4	11.81

Hit#	of	Tentative ID	MW	MolForm	CAS#	Qual
1	5	Benzene, 1,2,3-trimethyl-	120	C9H12	000526-73-8	97
2		Benzene, 1,2,4-trimethyl-	120	C9H12	000095-63-6	95
3		Mesitylene	120	C9H12	000108-67-8	95
4		Benzene, 1,2,4-trimethyl-	120	C9H12	000095-63-6	94
5		Benzene, 1,2,3-trimethyl-	120	C9H12	000526-73-8	93



Data Path : Z:\VOASRV\HPCHEM1\MSVOA U\DATA\VU110920\
 Data File : VU041145.D
 Acq On : 09 Nov 2020 16:55
 Operator : SY/MD
 Sample : L4646-12
 Misc : 25.0mL/MSVOA U/WATER
 ALS Vial : 14 Sample Multiplier: 1

Instrument :
 MSVOA_U
 ClientSampleID :
 GB0T6

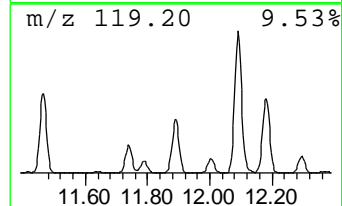
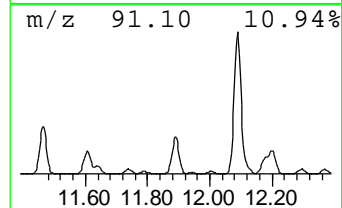
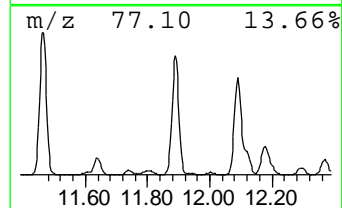
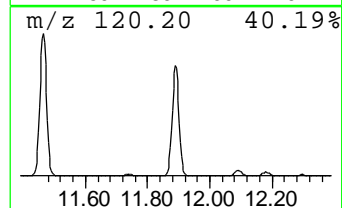
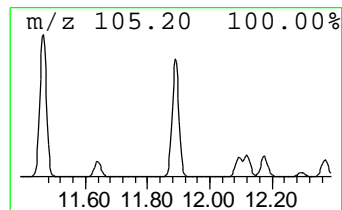
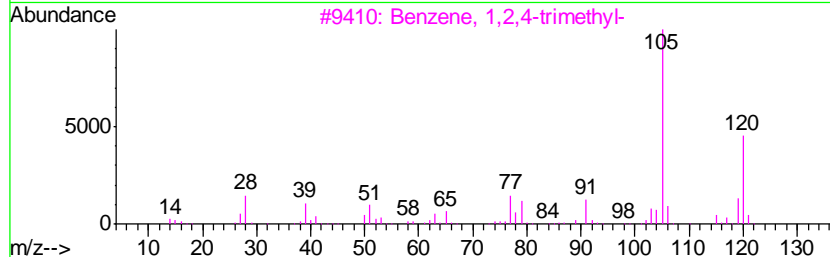
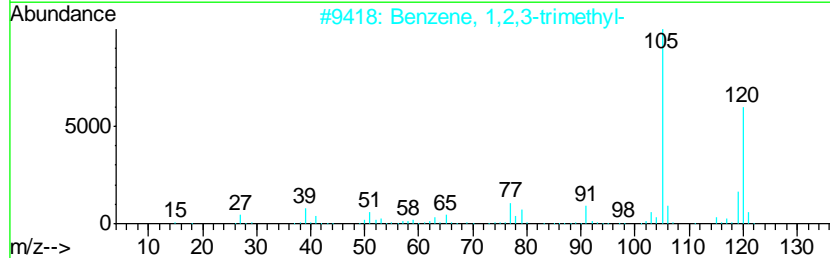
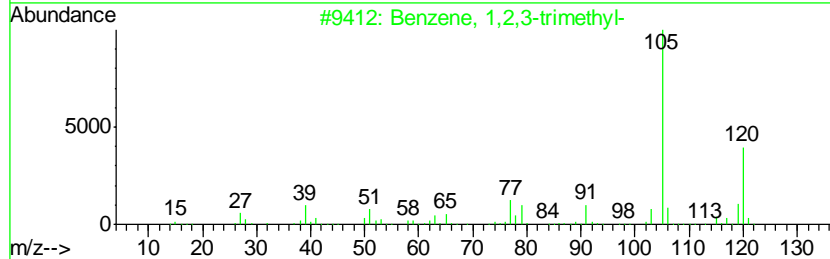
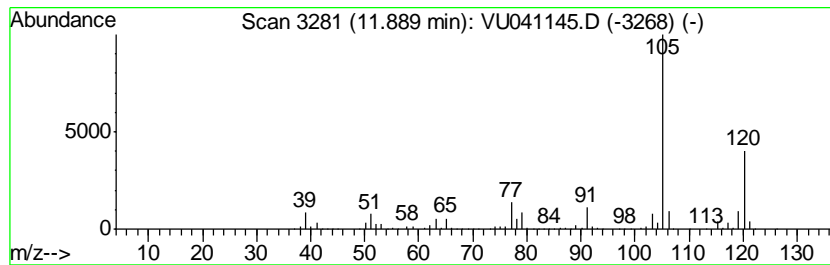
Quant Method : Z:\VOASRV\HPCHEM1\MSVOA_U\METHOD\SOMUTR102620WMA.M
 Quant Title : TRACE VOA SOM01.0

TIC Library : C:\DATABASE\NIST11.L
 TIC Integration Parameters: LSCINT.P

 Peak Number 20 Benzene, 1,2,4-trimethyl- Concentration Rank 15

R.T.	EstConc	Area	Relative to ISTD	R.T.
11.89	5.00 ug/L	1287370	1,4-Dichlorobenzene-d4	11.81

Hit#	of	Tentative ID	MW	MolForm	CAS#	Qual
1	5	Benzene, 1,2,3-trimethyl-	120	C9H12	000526-73-8	94
2		Benzene, 1,2,3-trimethyl-	120	C9H12	000526-73-8	94
3		Benzene, 1,2,4-trimethyl-	120	C9H12	000095-63-6	94
4		Benzene, 1,2,4-trimethyl-	120	C9H12	000095-63-6	91
5		Mesitylene	120	C9H12	000108-67-8	91



Data Path : Z:\VOASRV\HPCHEM1\MSVOA U\DATA\VU110920\
 Data File : VU041145.D
 Acq On : 09 Nov 2020 16:55
 Operator : SY/MD
 Sample : L4646-12
 Misc : 25.0mL/MSVOA U/WATER
 ALS Vial : 14 Sample Multiplier: 1

Instrument :
 MSVOA_U
 ClientSampleID :
 GB0T6

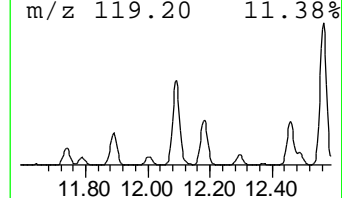
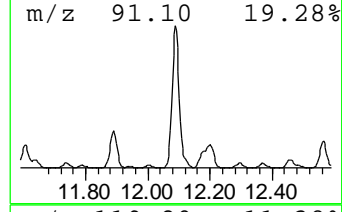
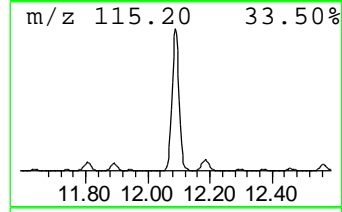
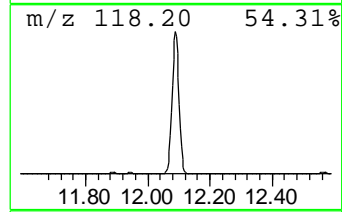
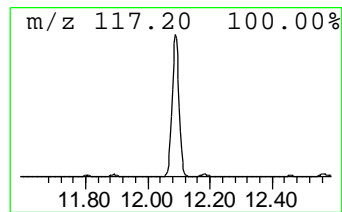
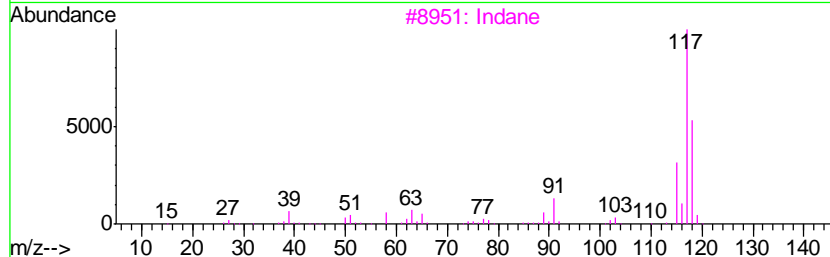
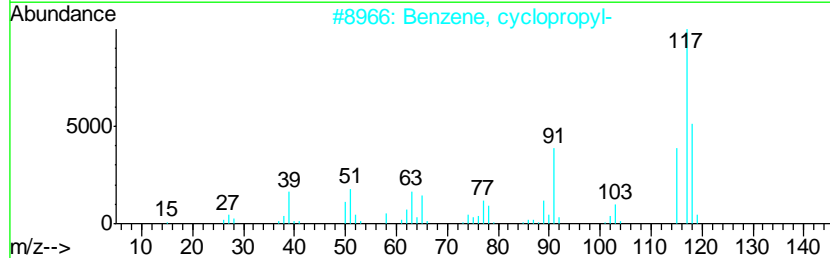
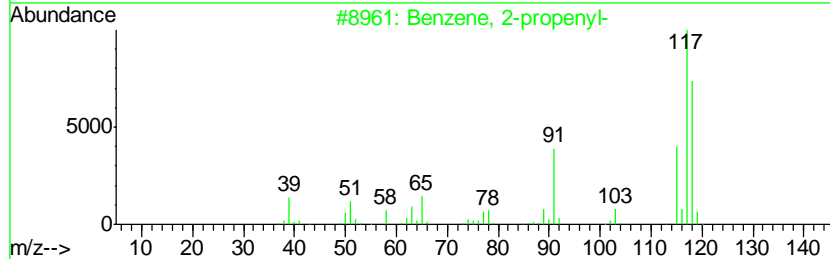
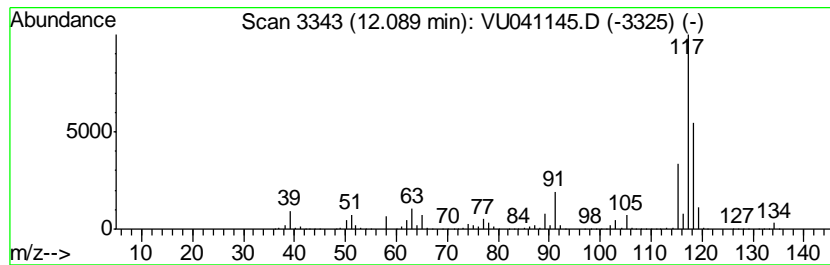
Quant Method : Z:\VOASRV\HPCHEM1\MSVOA_U\METHOD\SOMUTR102620WMA.M
 Quant Title : TRACE VOA SOM01.0

TIC Library : C:\DATABASE\NIST11.L
 TIC Integration Parameters: LSCINT.P

 Peak Number 21 Benzene, 2-propenyl- Concentration Rank 5

R.T.	EstConc	Area	Relative to ISTD	R.T.
12.09	14.08 ug/L	3626490	1,4-Dichlorobenzene-d4	11.81

Hit#	of	Tentative ID	MW	MolForm	CAS#	Qual
1	5	Benzene, 2-propenyl-	118	C9H10	000300-57-2	81
2		Benzene, cyclopropyl-	118	C9H10	000873-49-4	81
3		Indane	118	C9H10	000496-11-7	81
4		Indane	118	C9H10	000496-11-7	68
5		Benzene, cyclopropyl-	118	C9H10	000873-49-4	68



Data Path : Z:\VOASRV\HPCHEM1\MSVOA U\DATA\VU110920\
 Data File : VU041145.D
 Acq On : 09 Nov 2020 16:55
 Operator : SY/MD
 Sample : L4646-12
 Misc : 25.0mL/MSVOA U/WATER
 ALS Vial : 14 Sample Multiplier: 1

Instrument :
 MSVOA_U
 ClientSampleID :
 GB0T6

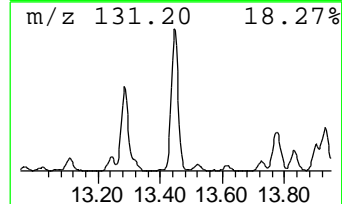
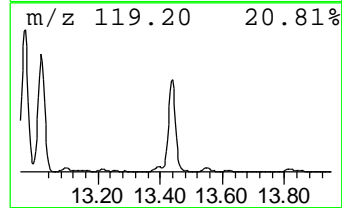
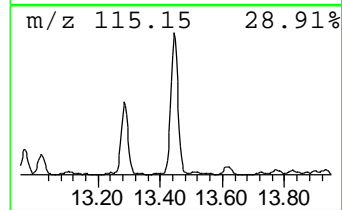
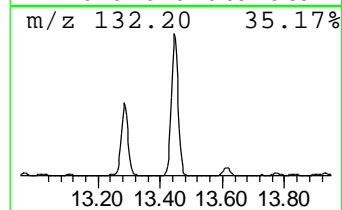
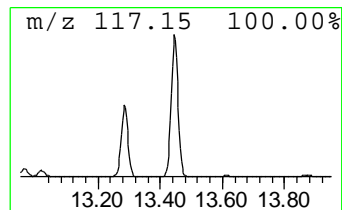
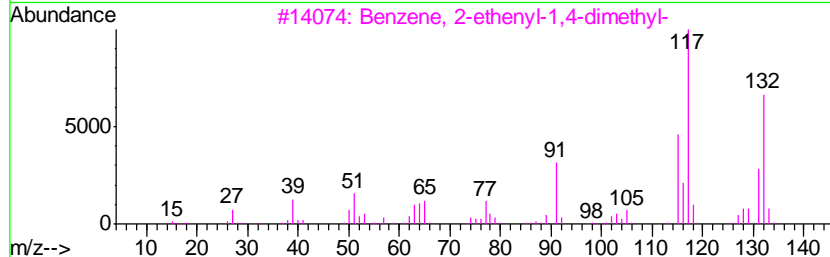
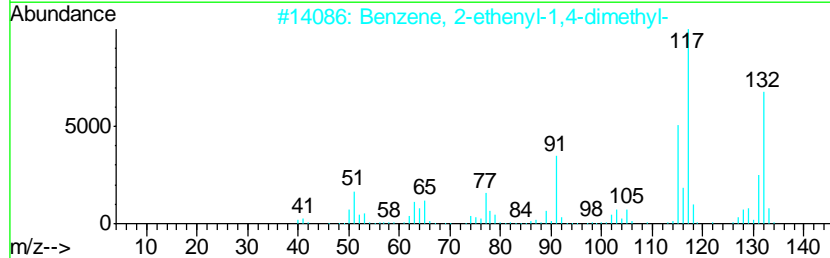
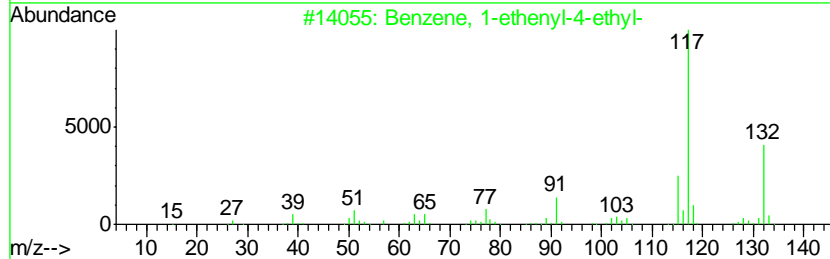
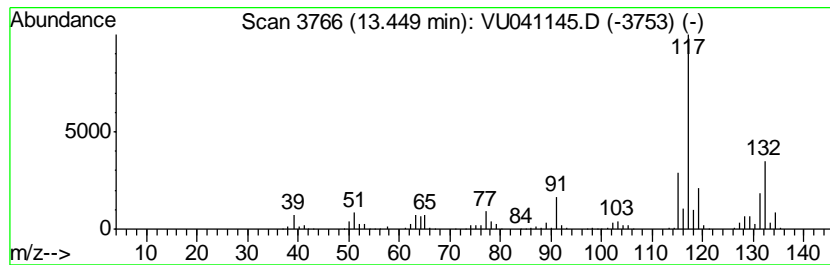
Quant Method : Z:\VOASRV\HPCHEM1\MSVOA_U\METHOD\SOMUTR102620WMA.M
 Quant Title : TRACE VOA SOM01.0

TIC Library : C:\DATABASE\NIST11.L
 TIC Integration Parameters: LSCINT.P

 Peak Number 22 Benzene, 1-ethenyl-4-ethyl- Concentration Rank 21

R.T.	EstConc	Area	Relative to ISTD	R.T.
13.45	3.03 ug/L	780416	1,4-Dichlorobenzene-d4	11.81

Hit#	of	Tentative ID	MW	MolForm	CAS#	Qual
1	5	Benzene, 1-ethenyl-4-ethyl-	132	C10H12	003454-07-7	93
2		Benzene, 2-ethenyl-1,4-dimethyl-	132	C10H12	002039-89-6	92
3		Benzene, 2-ethenyl-1,4-dimethyl-	132	C10H12	002039-89-6	90
4		3-Phenylbut-1-ene	132	C10H12	000934-10-1	87
5		Benzene, 2-butenyl-	132	C10H12	001560-06-1	87



Data Path : Z:\VOASRV\HPCHEM1\MSVOA_U\DATA\VU110920\
 Data File : VU041145.D
 Acq On : 09 Nov 2020 16:55
 Operator : SY/MD
 Sample : L4646-12
 Misc : 25.0mL/MSVOA_U/WATER
 ALS Vial : 14 Sample Multiplier: 1

Instrument :
 MSVOA_U
 ClientSampleId :
 GB0T6

Quant Method : Z:\VOASRV\HPCHEM1\MSVOA_U\METHOD\SOMUTR102620WMA.M
 Quant Title : TRACE VOA SOM01.0

TIC Library : C:\DATABASE\NIST11.L
 TIC Integration Parameters: LSCINT.P

TIC Top Hit name	RT	EstConc	Units	Response	--Internal Standard--			
					#	RT	Resp	Conc
(DEL) Alkane: Str...	1.49	5.4	ug/L	1339390	1	6.26	1230180	5.0
(DEL) Alkane: Str...	2.00	62.6	ug/L	15395300	1	6.26	1230180	5.0
(DEL) Alkane: Str...	2.22	15.5	ug/L	3810380	1	6.26	1230180	5.0
(DEL) Alkane: Str...	2.33	7.3	ug/L	1792710	1	6.26	1230180	5.0
(DEL) Alkane: Cyc...	2.43	3.7	ug/L	899492	1	6.26	1230180	5.0
(DEL) Alkane: Str...	2.48	15.9	ug/L	3899980	1	6.26	1230180	5.0
(DEL) Alkane: Str...	3.06	13.5	ug/L	3322470	1	6.26	1230180	5.0
(DEL) Alkane: Str...	3.15	13.2	ug/L	3249830	1	6.26	1230180	5.0
(DEL) Alkane: Str...	3.38	7.8	ug/L	1931420	1	6.26	1230180	5.0
(DEL) Alkane: Str...	4.00	4.5	ug/L	1111520	1	6.26	1230180	5.0
(DEL) Alkane: Str...	4.36	3.0	ug/L	733961	1	6.26	1230180	5.0
(DEL) Alkane: Cyc...	4.55	17.9	ug/L	4395760	1	6.26	1230180	5.0
(DEL) Alkane: Str...	5.48	4.3	ug/L	1059370	1	6.26	1230180	5.0
(DEL) Alkane: Str...	5.92	5.0	ug/L	1230180	1	6.26	1230180	5.0
(DEL) Alkane: Str...	7.39	4.5	ug/L	1112810	1	6.26	1230180	5.0
Benzene, propyl-	10.90	5.4	ug/L	1389850	3	11.81	1287370	5.0
Benzene, 1-ethyl-...	11.00	4.4	ug/L	1140980	3	11.81	1287370	5.0
Benzene, 1-ethyl-...	11.29	8.7	ug/L	2230790	3	11.81	1287370	5.0
Benzene, 1,2,3-tr...	11.47	6.0	ug/L	1538770	3	11.81	1287370	5.0
Benzene, 1,2,4-tr...	11.89	5.0	ug/L	1287370	3	11.81	1287370	5.0
Benzene, 2-propenyl-	12.09	14.1	ug/L	3626490	3	11.81	1287370	5.0
Benzene, 1-etheny...	13.45	3.0	ug/L	780416	3	11.81	1287370	5.0