

Data Path : Z:\VOASRV\HPCHEM1\MSVOA U\DATA\VU110920\
 Data File : VU041164.D
 Acq On : 10 Nov 2020 01:02
 Operator : SY/MD
 Sample : L4673-16
 Misc : 25.0mL/MSVOA U/WATER
 ALS Vial : 35 Sample Multiplier: 1

Instrument :
 MSVOA_U
 ClientSampled :
 GB0T4

Integration Parameters: rteint.p
 Integrator: RTE
 Smoothing : ON Filtering: 5
 Sampling : 1 Min Area: 3 % of largest Peak
 Start Thrs: 0.1 Max Peaks: 100
 Stop Thrs : 0 Peak Location: TOP

If leading or trailing edge < 100 prefer < Baseline drop else tangent >
 Peak separation: 5

Method : Z:\VOASRV\HPCHEM1\MSVOA_U\METHOD\SOMUTR102620WMA.M
 Title : TRACE VOA SOM01.0

Signal : TIC

peak #	R.T. min	first scan	max scan	last scan	PK TY	peak height	corr. area	corr. % max.	% of total
1	1.607	71	83	94	rBV2	35135	40247	5.46%	1.200%
2	1.922	174	181	190	rBV	21990	27081	3.67%	0.808%
3	2.578	374	385	397	rBV	42750	70005	9.50%	2.088%
4	3.369	619	631	651	rVB2	31055	60940	8.27%	1.817%
5	4.687	1018	1041	1077	rBV2	291406	737274	100.00%	21.987%
6	5.083	1149	1164	1184	rVB2	45700	100116	13.58%	2.986%
7	5.739	1348	1368	1389	rBV2	87155	229954	31.19%	6.858%
8	6.263	1518	1531	1551	rBV	75958	141899	19.25%	4.232%
9	6.552	1612	1621	1631	rBB6	5936	9893	1.34%	0.295%
10	6.703	1655	1668	1687	rBB	58216	111282	15.09%	3.319%
11	7.575	1926	1939	1952	rBV2	26112	44821	6.08%	1.337%
12	7.906	2029	2042	2059	rBV	92688	157992	21.43%	4.712%
13	8.185	2118	2129	2144	rBV2	17493	29381	3.99%	0.876%
14	8.494	2210	2225	2252	rBV	340987	597240	81.01%	17.811%
15	8.642	2257	2271	2294	rBV	198499	372218	50.49%	11.100%
16	9.420	2501	2513	2527	rBV	116498	187504	25.43%	5.592%
17	10.754	2916	2928	2941	rVB2	51543	82043	11.13%	2.447%
18	11.806	3244	3255	3269	rBV	107935	167632	22.74%	4.999%
19	12.057	3323	3333	3344	rBV4	6291	10896	1.48%	0.325%
20	12.188	3362	3374	3386	rBV	111349	174850	23.72%	5.214%

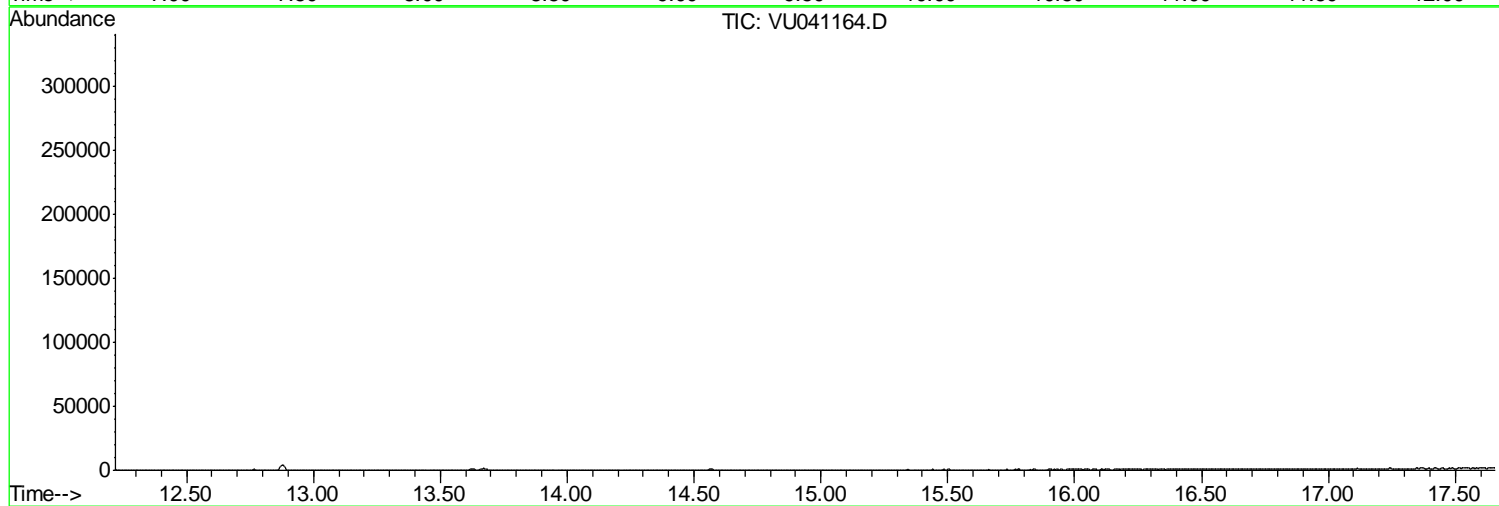
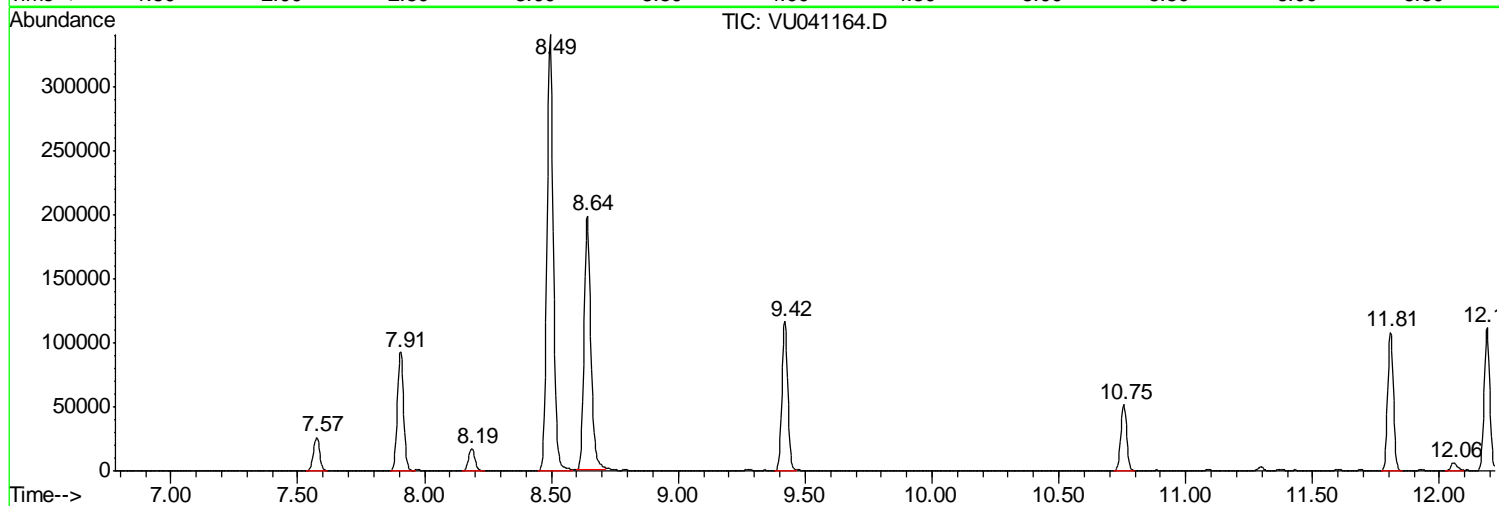
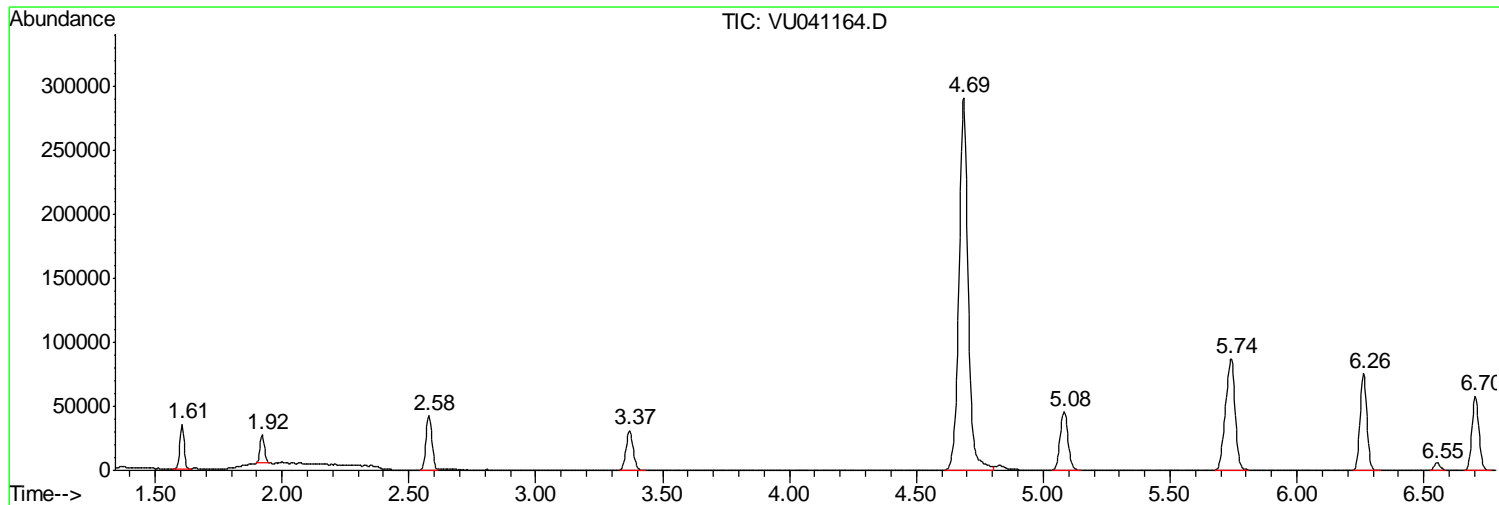
Sum of corrected areas: 3353268

Data Path : Z:\VOASRV\HPCHEM1\MSVOA U\DATA\VU110920\
Data File : VU041164.D
Acq On : 10 Nov 2020 01:02
Operator : SY/MD
Sample : L4673-16
Misc : 25.0mL/MSVOA U/WATER
ALS Vial : 35 Sample Multiplier: 1

Instrument :
MSVOA_U
ClientSampled :
GB0T4

Quant Method : Z:\VOASRV\HPCHEM1\MSVOA_U\METHOD\SOMUTR102620WMA.M
Quant Title : TRACE VOA SOM01.0

TIC Library : C:\DATABASE\NIST11.L
TIC Integration Parameters: LSCINT.P



Data Path : Z:\VOASRV\HPCHEM1\MSVOA U\DATA\VU110920\
 Data File : VU041164.D
 Acq On : 10 Nov 2020 01:02
 Operator : SY/MD
 Sample : L4673-16
 Misc : 25.0mL/MSVOA U/WATER
 ALS Vial : 35 Sample Multiplier: 1

Instrument :
 MSVOA_U
 ClientSampled :
 GB0T4

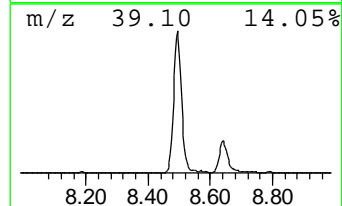
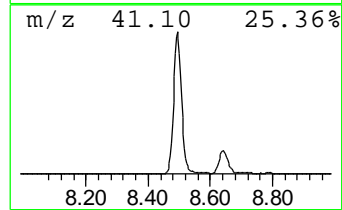
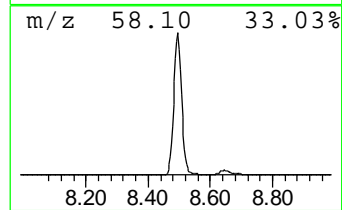
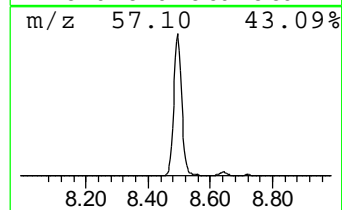
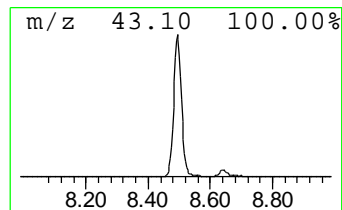
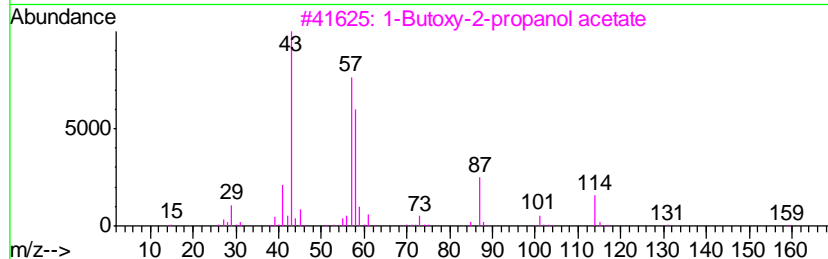
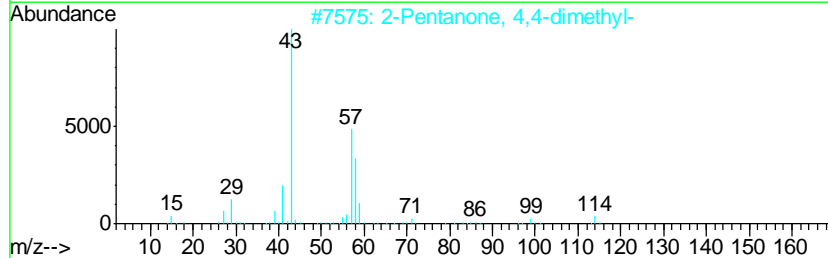
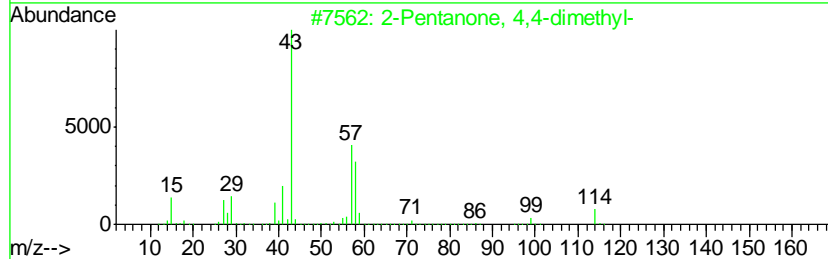
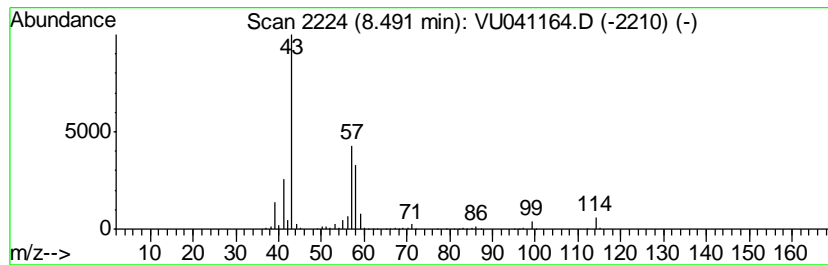
Quant Method : Z:\VOASRV\HPCHEM1\MSVOA_U\METHOD\SOMUTR102620WMA.M
 Quant Title : TRACE VOA SOM01.0

TIC Library : C:\DATABASE\NIST11.L
 TIC Integration Parameters: LSCINT.P

 Peak Number 2 2-Pentanone, 4,4-dimethyl- Concentration Rank 1

R.T.	EstConc	Area	Relative to ISTD	R.T.
8.49	15.93 ug/L	597240	Chlorobenzene-d5	9.42

Hit#	of	Tentative ID	MW	MolForm	CAS#	Qual
1	5	2-Pentanone, 4,4-dimethyl-	114	C7H14O	000590-50-1	91
2		2-Pentanone, 4,4-dimethyl-	114	C7H14O	000590-50-1	80
3		1-Butoxy-2-propanol acetate	174	C9H18O3	085409-76-3	56
4		2-Hexanone, 5-methyl-	114	C7H14O	000110-12-3	50
5		2-Hexanone, 5-methyl-	114	C7H14O	000110-12-3	50



Data Path : Z:\VOASRV\HPCHEM1\MSVOA_U\DATA\VU110920\
Data File : VU041164.D
Acq On : 10 Nov 2020 01:02
Operator : SY/MD
Sample : L4673-16
Misc : 25.0mL/MSVOA_U/WATER
ALS Vial : 35 Sample Multiplier: 1

Instrument :
MSVOA_U
ClientSampleId :
GB0T4

Quant Method : Z:\VOASRV\HPCHEM1\MSVOA_U\METHOD\SOMUTR102620WMA.M
Quant Title : TRACE VOA SOM01.0

TIC Library : C:\DATABASE\NIST11.L
TIC Integration Parameters: LSCINT.P

TIC Top Hit name	RT	EstConc	Units	Response	--Internal Standard--			
					#	RT	Resp	Conc
2-Pentanone, 4,4-...	8.49	15.9	ug/L	597240	2	9.42	187504	5.0