

Data Path : Z:\voasrv\HPCHEM1\MSVOA\_U\Data\VU111021\  
 Data File : VU045719.D  
 Acq On : 11 Nov 2021 04:04  
 Operator : SY/MD  
 Sample : M4594-08 100X  
 Misc : 5.0mL/MSVOA\_U/WATER  
 ALS Vial : 40 Sample Multiplier: 1

Instrument :  
 MSVOA\_U  
 ClientSampleId :  
 56BR-20211108

Quant Time: Nov 11 13:09:33 2021  
 Quant Method : Z:\voasrv\HPCHEM1\MSVOA\_U\Method\82U110521W.M  
 Quant Title : SW846 8260  
 QLast Update : Fri Nov 05 13:35:16 2021  
 Response via : Initial Calibration

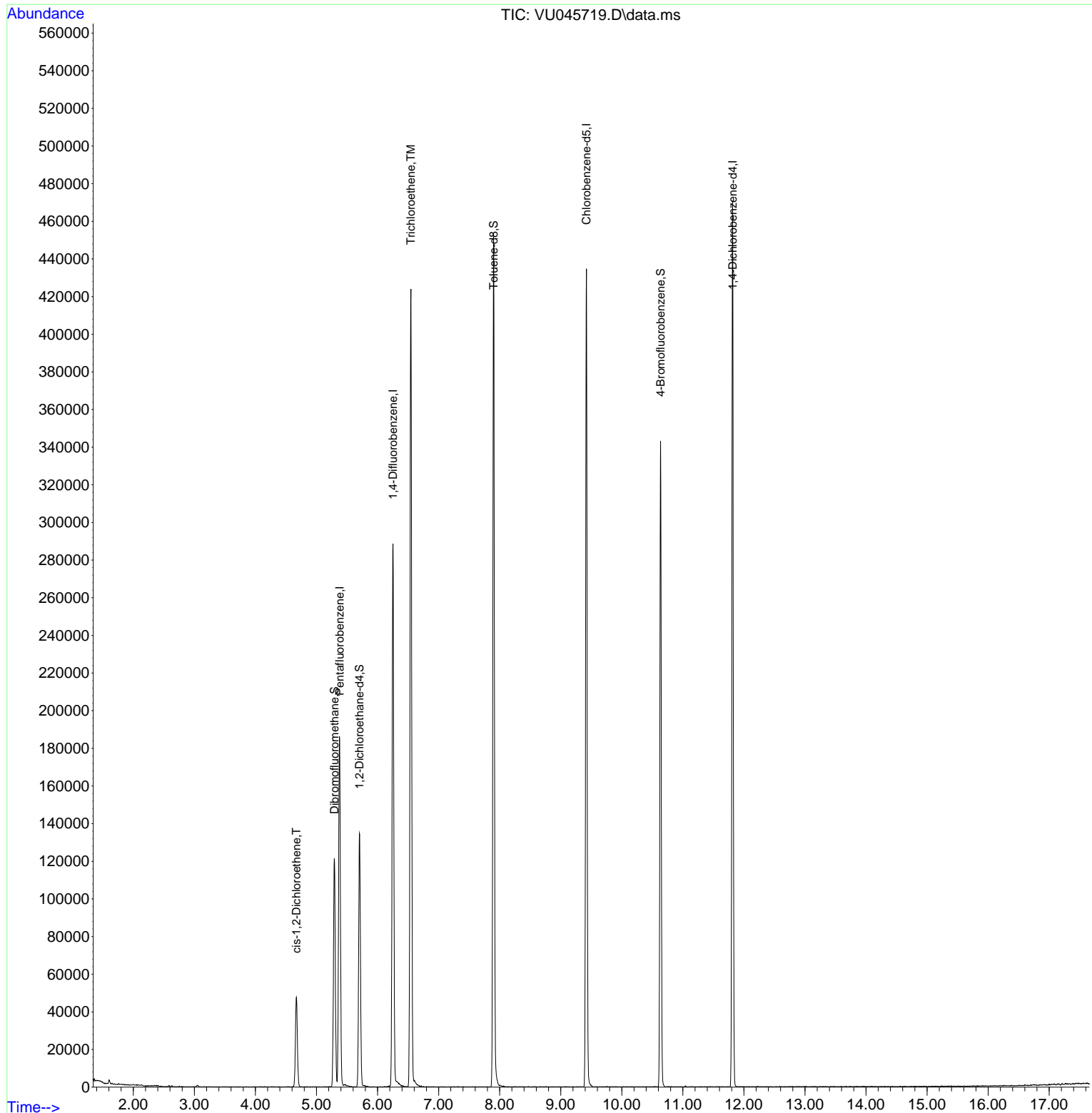
Compound	R.T.	QIon	Response	Conc	Units	Dev(Min)
-----						
Internal Standards						
1) Pentafluorobenzene	5.378	168	122919	50.000	ug/l	0.00
34) 1,4-Difluorobenzene	6.253	114	226750	50.000	ug/l	0.00
63) Chlorobenzene-d5	9.420	117	234898	50.000	ug/l	0.00
72) 1,4-Dichlorobenzene-d4	11.815	152	116328	50.000	ug/l	0.00
System Monitoring Compounds						
33) 1,2-Dichloroethane-d4	5.703	65	99668	54.142	ug/l	0.00
Spiked Amount	50.000	Range	78 - 117	Recovery	=	108.280%
35) Dibromofluoromethane	5.292	113	77480	51.179	ug/l	0.00
Spiked Amount	50.000	Range	75 - 124	Recovery	=	102.360%
50) Toluene-d8	7.899	98	298384	53.005	ug/l	0.00
Spiked Amount	50.000	Range	92 - 112	Recovery	=	106.000%
62) 4-Bromofluorobenzene	10.635	95	111865	49.556	ug/l	0.00
Spiked Amount	50.000	Range	83 - 123	Recovery	=	99.120%
Target Compounds						
27) cis-1,2-Dichloroethene	4.671	96	25545	15.459	ug/l	88
44) Trichloroethene	6.546	130	140674	89.779	ug/l	99
-----						

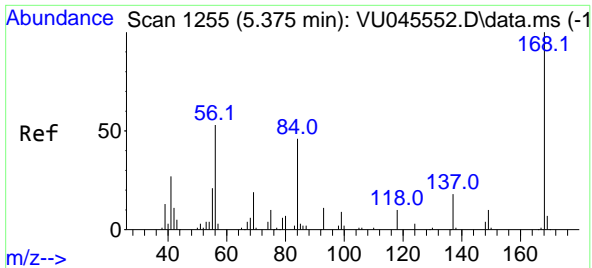
(#) = qualifier out of range (m) = manual integration (+) = signals summed

Data Path : Z:\voasrv\HPCHEM1\MSVOA\_U\Data\VU111021\  
 Data File : VU045719.D  
 Acq On : 11 Nov 2021 04:04  
 Operator : SY/MD  
 Sample : M4594-08 100X  
 Misc : 5.0mL/MSVOA\_U/WATER  
 ALS Vial : 40 Sample Multiplier: 1

Instrument :  
 MSVOA\_U  
 ClientSampleId :  
 56BR-20211108

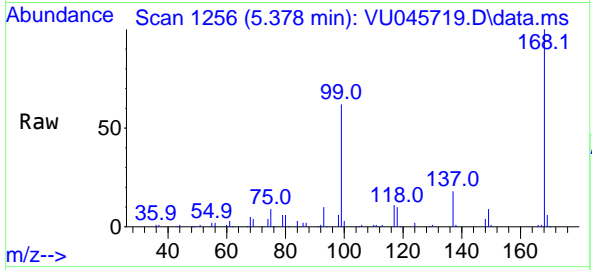
Quant Time: Nov 11 13:09:33 2021  
 Quant Method : Z:\voasrv\HPCHEM1\MSVOA\_U\Method\82U110521W.M  
 Quant Title : SW846 8260  
 QLast Update : Fri Nov 05 13:35:16 2021  
 Response via : Initial Calibration



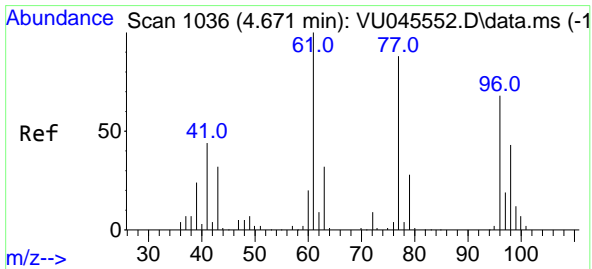
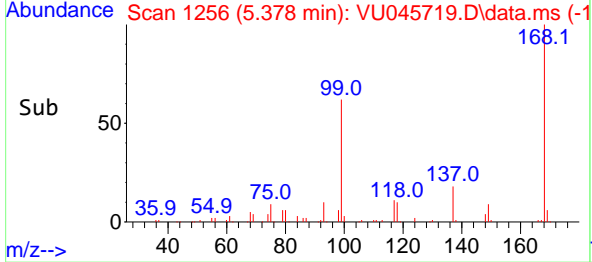
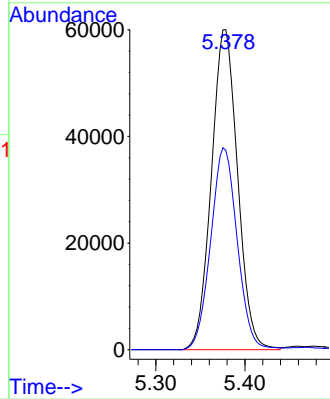


#1  
 Pentafluorobenzene  
 Concen: 50.000 ug/l  
 RT: 5.378 min Scan# 11  
 Delta R.T. 0.003 min  
 Lab File: VU045719.D  
 Acq: 11 Nov 2021 04:04

Instrument :  
 MSVOA\_U  
 ClientSampleId :  
 56BR-20211108

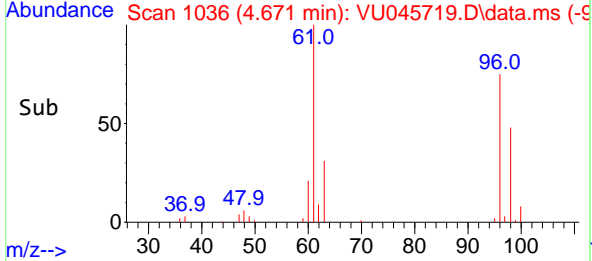
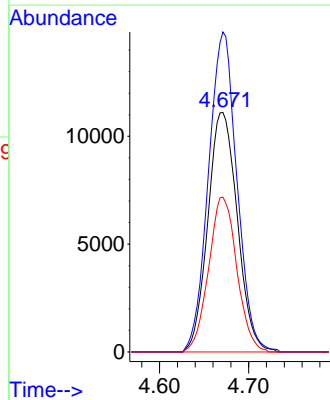
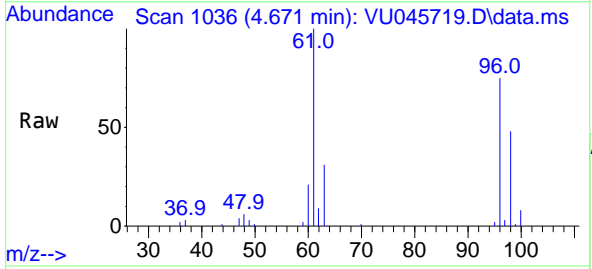


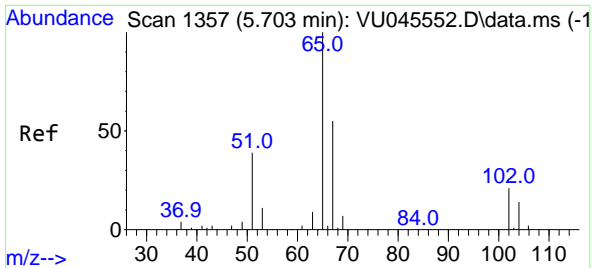
Tgt Ion:168 Resp: 122919  
 Ion Ratio Lower Upper  
 168 100  
 99 62.3 51.0 76.6



#27  
 cis-1,2-Dichloroethene  
 Concen: 15.459 ug/l  
 RT: 4.671 min Scan# 1036  
 Delta R.T. -0.000 min  
 Lab File: VU045719.D  
 Acq: 11 Nov 2021 04:04

Tgt Ion: 96 Resp: 25545  
 Ion Ratio Lower Upper  
 96 100  
 61 128.9 0.0 299.2  
 98 61.8 0.0 127.6

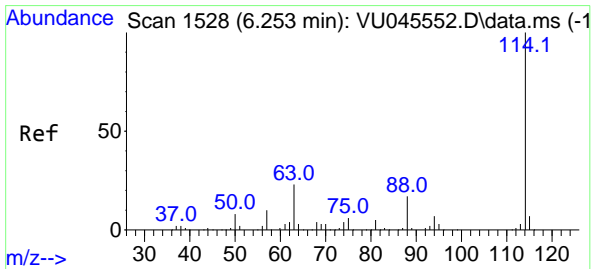
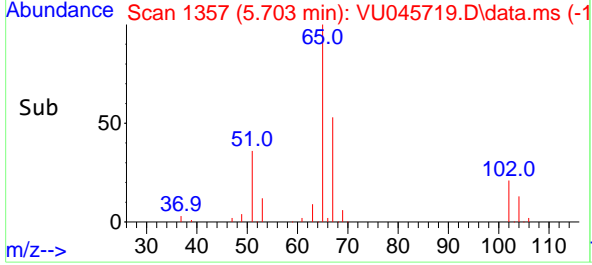
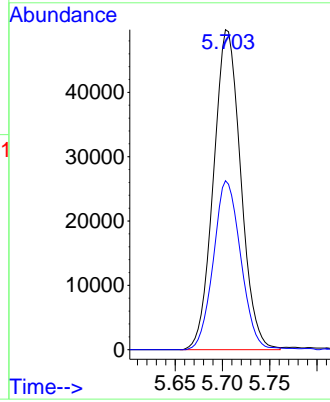
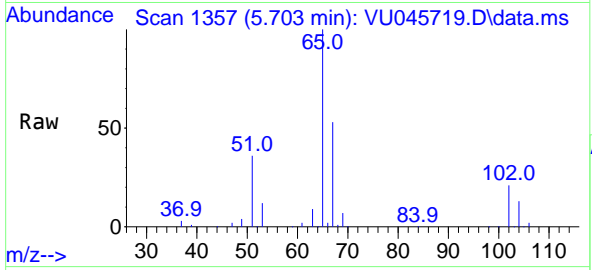




#33  
 1,2-Dichloroethane-d4  
 Concen: 54.142 ug/l  
 RT: 5.703 min Scan# 11  
 Delta R.T. -0.000 min  
 Lab File: VU045719.D  
 Acq: 11 Nov 2021 04:04

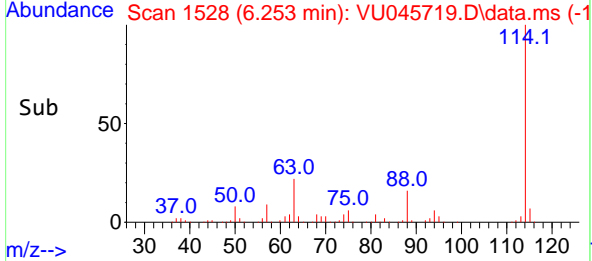
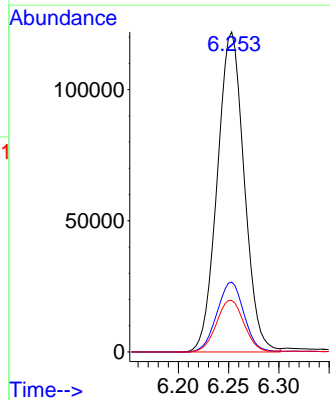
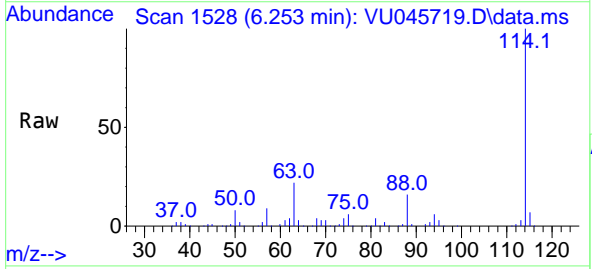
Instrument : MSVOA\_U  
 ClientSampleId : 56BR-20211108

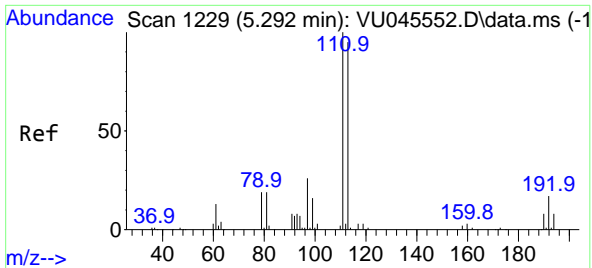
Tgt Ion: 65 Resp: 99668  
 Ion Ratio Lower Upper  
 65 100  
 67 53.1 0.0 105.8



#34  
 1,4-Difluorobenzene  
 Concen: 50.000 ug/l  
 RT: 6.253 min Scan# 1528  
 Delta R.T. -0.000 min  
 Lab File: VU045719.D  
 Acq: 11 Nov 2021 04:04

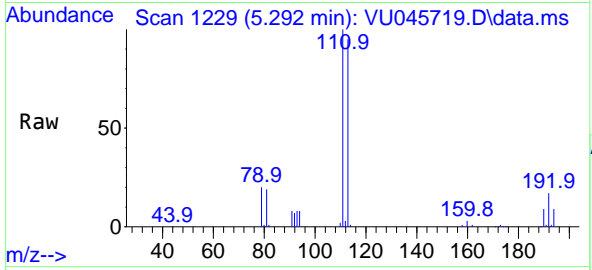
Tgt Ion: 114 Resp: 226750  
 Ion Ratio Lower Upper  
 114 100  
 63 21.9 0.0 45.6  
 88 16.1 0.0 33.8



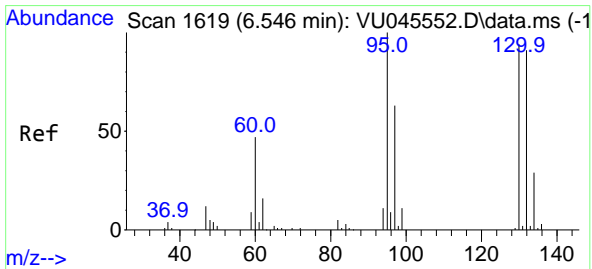
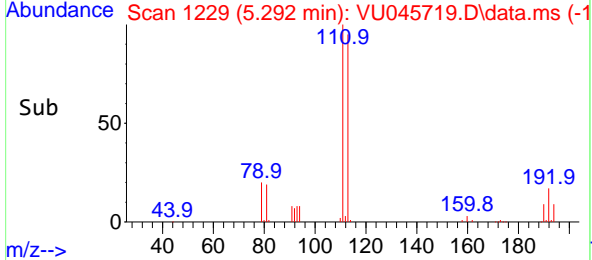
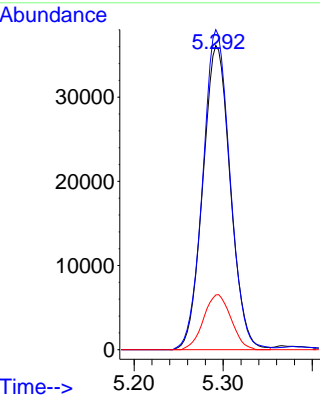


#35  
 Dibromofluoromethane  
 Concen: 51.179 ug/l  
 RT: 5.292 min Scan# 1111  
 Delta R.T. -0.000 min  
 Lab File: VU045719.D  
 Acq: 11 Nov 2021 04:04

Instrument : MSVOA\_U  
 ClientSampleId : 56BR-20211108

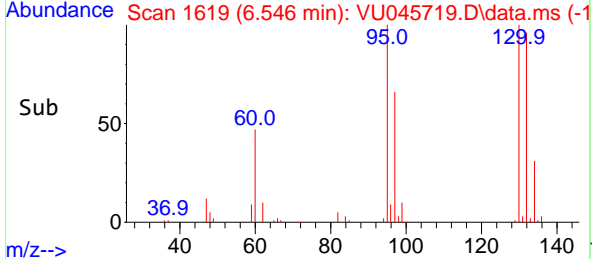
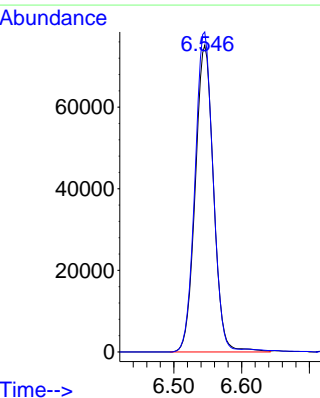
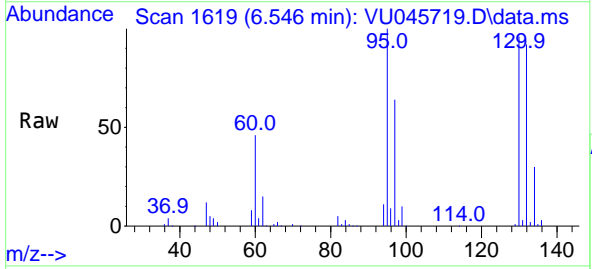


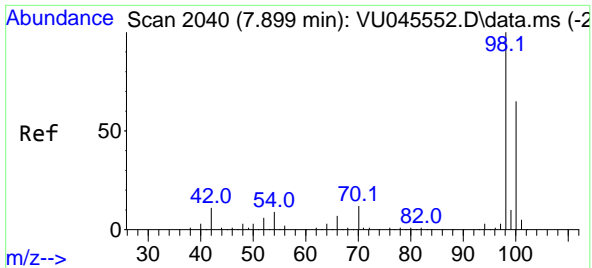
Tgt Ion:113 Resp: 77480  
 Ion Ratio Lower Upper  
 113 100  
 111 104.2 82.8 124.2  
 192 18.0 14.8 22.2



#44  
 Trichloroethene  
 Concen: 89.779 ug/l  
 RT: 6.546 min Scan# 1619  
 Delta R.T. -0.000 min  
 Lab File: VU045719.D  
 Acq: 11 Nov 2021 04:04

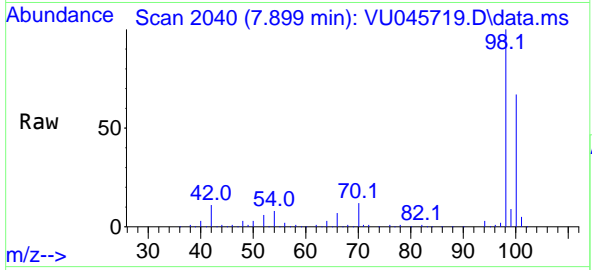
Tgt Ion:130 Resp: 140674  
 Ion Ratio Lower Upper  
 130 100  
 95 104.3 0.0 211.4



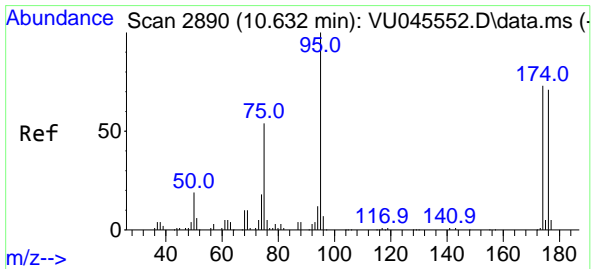
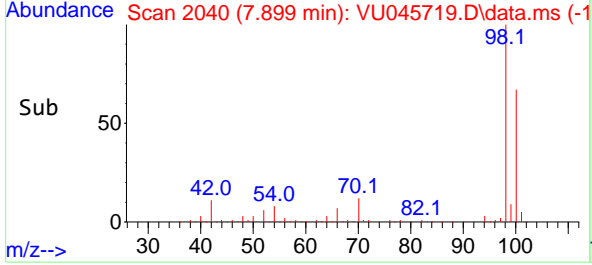
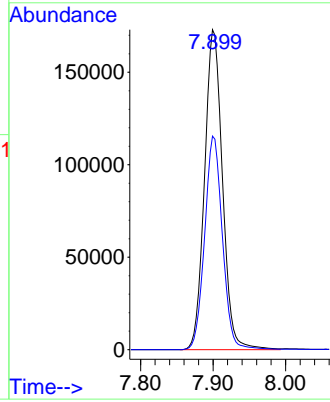


#50  
 Toluene-d8  
 Concen: 53.005 ug/l  
 RT: 7.899 min Scan# 2040  
 Delta R.T. -0.000 min  
 Lab File: VU045719.D  
 Acq: 11 Nov 2021 04:04

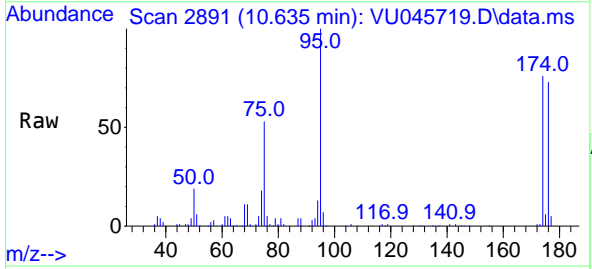
Instrument : MSVOA\_U  
 ClientSampleId : 56BR-20211108



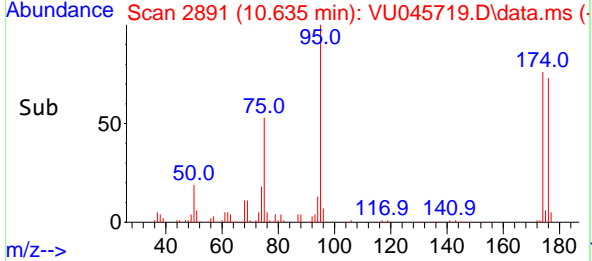
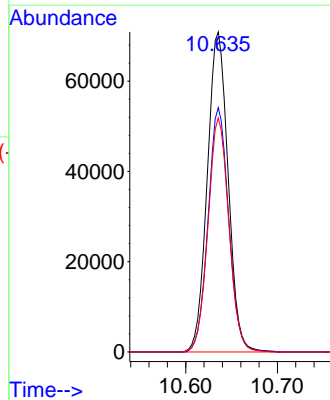
Tgt Ion: 98 Resp: 298384  
 Ion Ratio Lower Upper  
 98 100  
 100 66.0 52.5 78.7

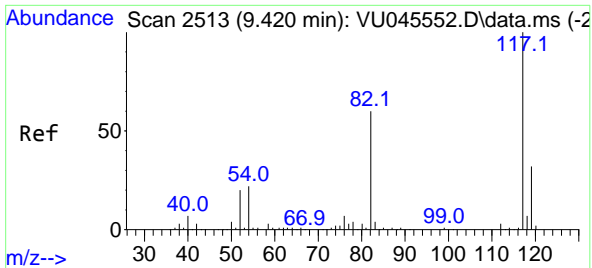


#62  
 4-Bromofluorobenzene  
 Concen: 49.556 ug/l  
 RT: 10.635 min Scan# 2891  
 Delta R.T. 0.003 min  
 Lab File: VU045719.D  
 Acq: 11 Nov 2021 04:04



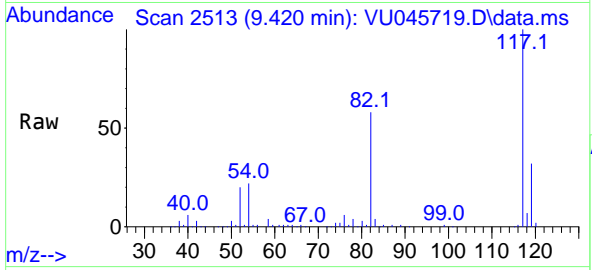
Tgt Ion: 95 Resp: 111865  
 Ion Ratio Lower Upper  
 95 100  
 174 75.9 0.0 141.8  
 176 72.8 0.0 138.2





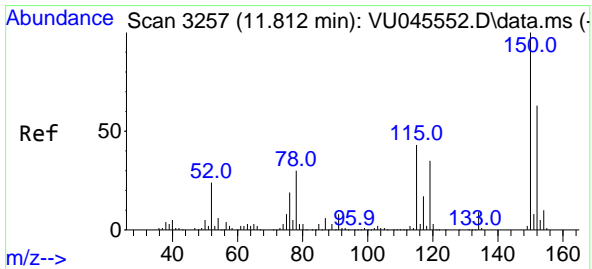
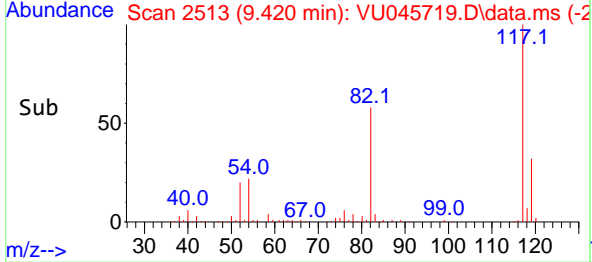
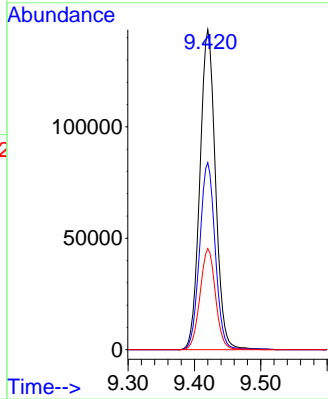
#63  
 Chlorobenzene-d5  
 Concen: 50.000 ug/l  
 RT: 9.420 min Scan# 21  
 Delta R.T. 0.000 min  
 Lab File: VU045719.D  
 Acq: 11 Nov 2021 04:04

Instrument : MSVOA\_U  
 ClientSampleId : 56BR-20211108



Tgt Ion:117 Resp: 234898

Ion	Ratio	Lower	Upper
117	100		
82	58.5	47.8	71.8
119	31.6	25.8	38.8



#72  
 1,4-Dichlorobenzene-d4  
 Concen: 50.000 ug/l  
 RT: 11.815 min Scan# 3258  
 Delta R.T. 0.003 min  
 Lab File: VU045719.D  
 Acq: 11 Nov 2021 04:04

Tgt Ion:152 Resp: 116328

Ion	Ratio	Lower	Upper
152	100		
115	62.9	42.7	128.1
150	157.8	0.0	346.8

