

Data Path : Z:\voasrv\HPCHEM1\MSVOA_U\Data\VU111022\
 Data File : VU051805.D
 Acq On : 10 Nov 2022 17:00
 Operator : JC/MD
 Sample : N5571-04
 Misc : 25.0mL/MSVOA_U/WATER
 ALS Vial : 10 Sample Multiplier: 1

Instrument :
 MSVOA_U
 ClientSampleId :
 GBMW4

Integration Parameters: rteint.p

Integrator: RTE
 Smoothing : ON Filtering: 5
 Sampling : 1 Min Area: 3 % of largest Peak
 Start Thrs: 0.1 Max Peaks: 100
 Stop Thrs : 0 Peak Location: TOP

If leading or trailing edge < 100 prefer < Baseline drop else tangent >
 Peak separation: 5

Method : Z:\voasrv\HPCHEM1\MSVOA_U\Method\SFAMUTR102822WMA.M
 Title : TRACE VOA SFAM1.0

Signal : TIC: VU051805.D\data.ms

peak #	R.T. min	first scan	max scan	last scan	PK TY	peak height	corr. area	corr. % max.	% of total
1	1.482	35	44	52	rBV3	10727	19727	2.24%	0.308%
2	1.597	72	80	89	rBV	95364	114301	12.99%	1.787%
3	1.909	169	177	192	rVB	82002	111165	12.63%	1.738%
4	2.565	366	381	395	rBV	148925	244472	27.78%	3.823%
5	3.851	758	781	784	rBV	6804	20118	2.29%	0.315%
6	4.620	1008	1020	1050	rBV	137484	347086	39.44%	5.427%
7	5.060	1142	1157	1186	rBV	152871	367218	41.73%	5.742%
8	5.723	1343	1363	1383	rBV2	308271	805536	91.54%	12.596%
9	6.247	1513	1526	1550	rBV	232885	447442	50.85%	6.996%
10	6.687	1650	1663	1683	rBV2	201798	392984	44.66%	6.145%
11	7.565	1923	1936	1957	rBV	84644	151503	17.22%	2.369%
12	7.896	2026	2039	2059	rBV	334454	584744	66.45%	9.143%
13	8.179	2116	2127	2143	rBV	52839	90503	10.28%	1.415%
14	8.632	2256	2268	2297	rBV2	463133	879961	100.00%	13.759%
15	9.414	2499	2511	2547	rBV	354396	592153	67.29%	9.259%
16	10.755	2913	2928	2942	rBV	178780	286174	32.52%	4.475%
17	11.809	3244	3256	3281	rBV	269528	440438	50.05%	6.887%
18	12.192	3362	3375	3404	rBV	301072	499777	56.80%	7.815%

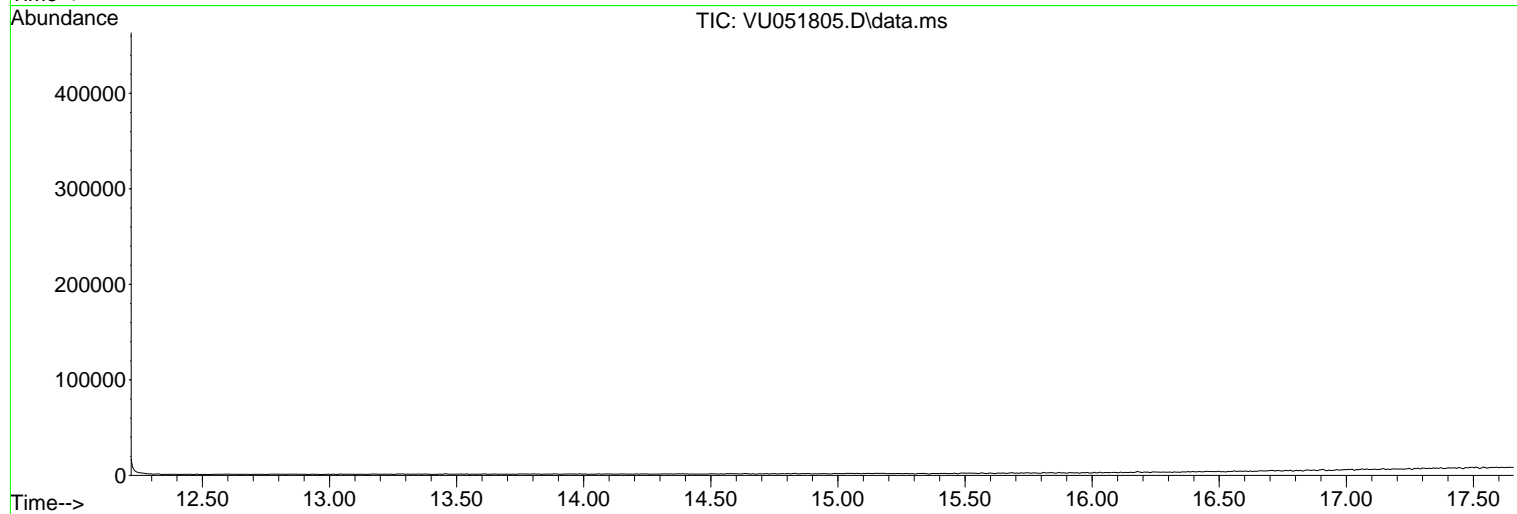
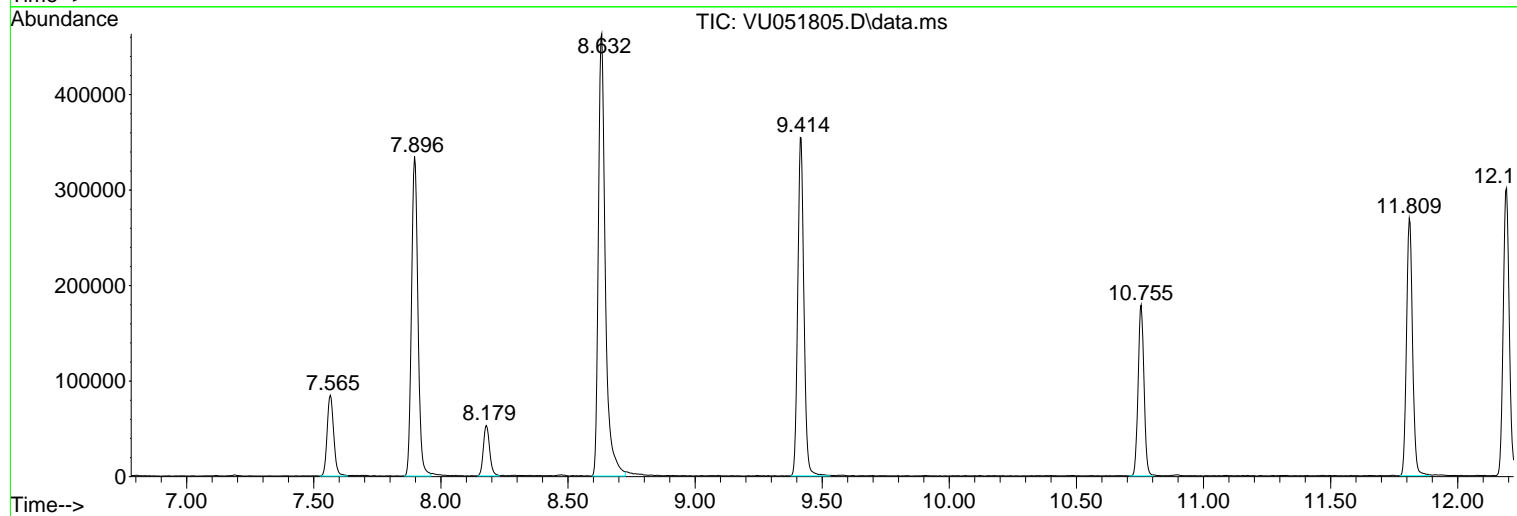
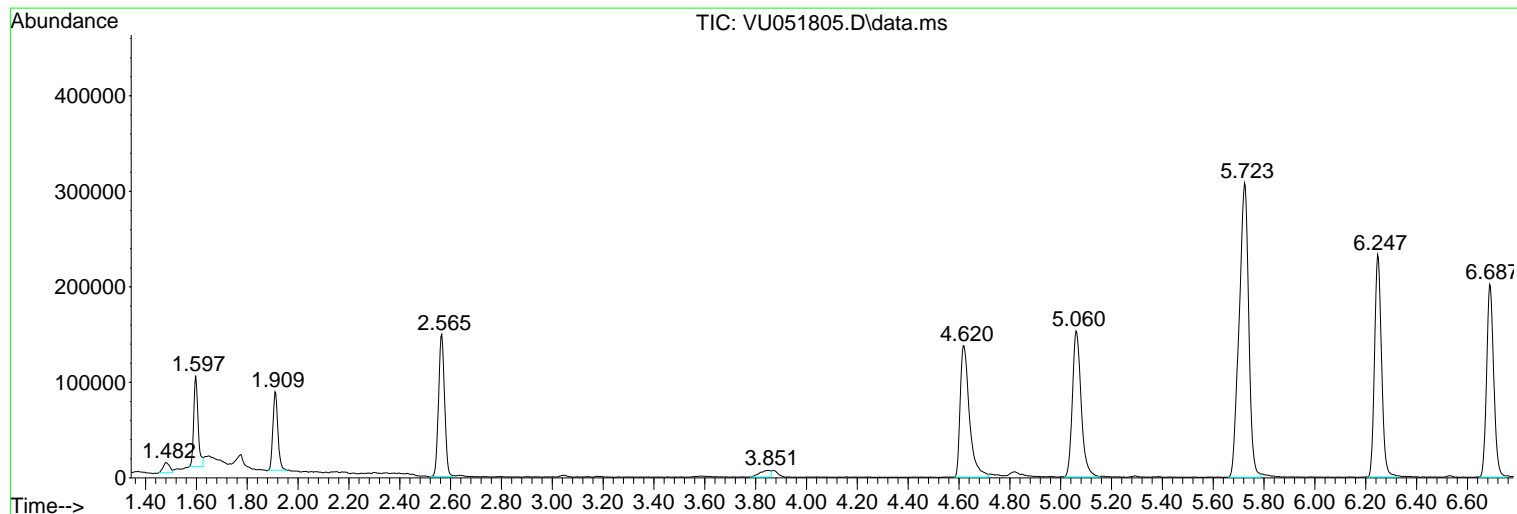
Sum of corrected areas: 6395302

Data Path : Z:\voasrv\HPCHEM1\MSVOA_U\Data\VU111022\
Data File : VU051805.D
Acq On : 10 Nov 2022 17:00
Operator : JC/MD
Sample : N5571-04
Misc : 25.0mL/MSVOA_U/WATER
ALS Vial : 10 Sample Multiplier: 1

Instrument :
MSVOA_U
ClientSampleId :
GBMW4

Quant Method : Z:\voasrv\HPCHEM1\MSVOA_U\Method\SFAMUTR102822WMA.M
Quant Title : TRACE VOA SFAM1.0

TIC Library : C:\Database\NIST20.L
TIC Integration Parameters: LSCINT.P



Library Search Compound Report

Data Path : Z:\voasrv\HPCHEM1\MSVOA_U\Data\VU111022\
Data File : VU051805.D
Acq On : 10 Nov 2022 17:00
Operator : JC/MD
Sample : N5571-04
Misc : 25.0mL/MSVOA_U/WATER
ALS Vial : 10 Sample Multiplier: 1

Instrument :
MSVOA_U
ClientSampleId :
GBMW4

Quant Method : Z:\voasrv\HPCHEM1\MSVOA_U\Method\SFAMUTR102822WMA.M
Quant Title : TRACE VOA SFAM1.0

TIC Library : C:\Database\NIST20.L
TIC Integration Parameters: LSCINT.P

No Library Search Compounds Detected

Data Path : Z:\voasrv\HPCHEM1\MSVOA_U\Data\VU111022\
Data File : VU051805.D
Acq On : 10 Nov 2022 17:00
Operator : JC/MD
Sample : N5571-04
Misc : 25.0mL/MSVOA_U/WATER
ALS Vial : 10 Sample Multiplier: 1

Instrument :
MSVOA_U
ClientSampleId :
GBMW4

Quant Method : Z:\voasrv\HPCHEM1\MSVOA_U\Method\SFAMUTR102822WMA.M
Quant Title : TRACE VOA SFAM1.0

TIC Library : C:\Database\NIST0.L
TIC Integration Parameters: LSCINT.P

TIC Top Hit name	RT	EstConc	Units	Response	--Internal Standard--		
					#	RT	Resp Conc
