

Data Path : Z:\voasrv\HPCHEM1\MSVOA_U\Data\VU111121\
 Data File : VU045750.D
 Acq On : 11 Nov 2021 19:42
 Operator : SY/MD
 Sample : PB140643TB
 Misc : 5.0mL/MSVOA_U/WATER
 ALS Vial : 24 Sample Multiplier: 1

Instrument :
 MSVOA_U
 ClientSampleId :
 PB140643TB

Quant Time: Nov 12 06:13:05 2021
 Quant Method : Z:\voasrv\HPCHEM1\MSVOA_U\Method\82U110521W.M
 Quant Title : SW846 8260
 QLast Update : Fri Nov 05 13:35:16 2021
 Response via : Initial Calibration

Compound	R.T.	QIon	Response	Conc	Units	Dev(Min)

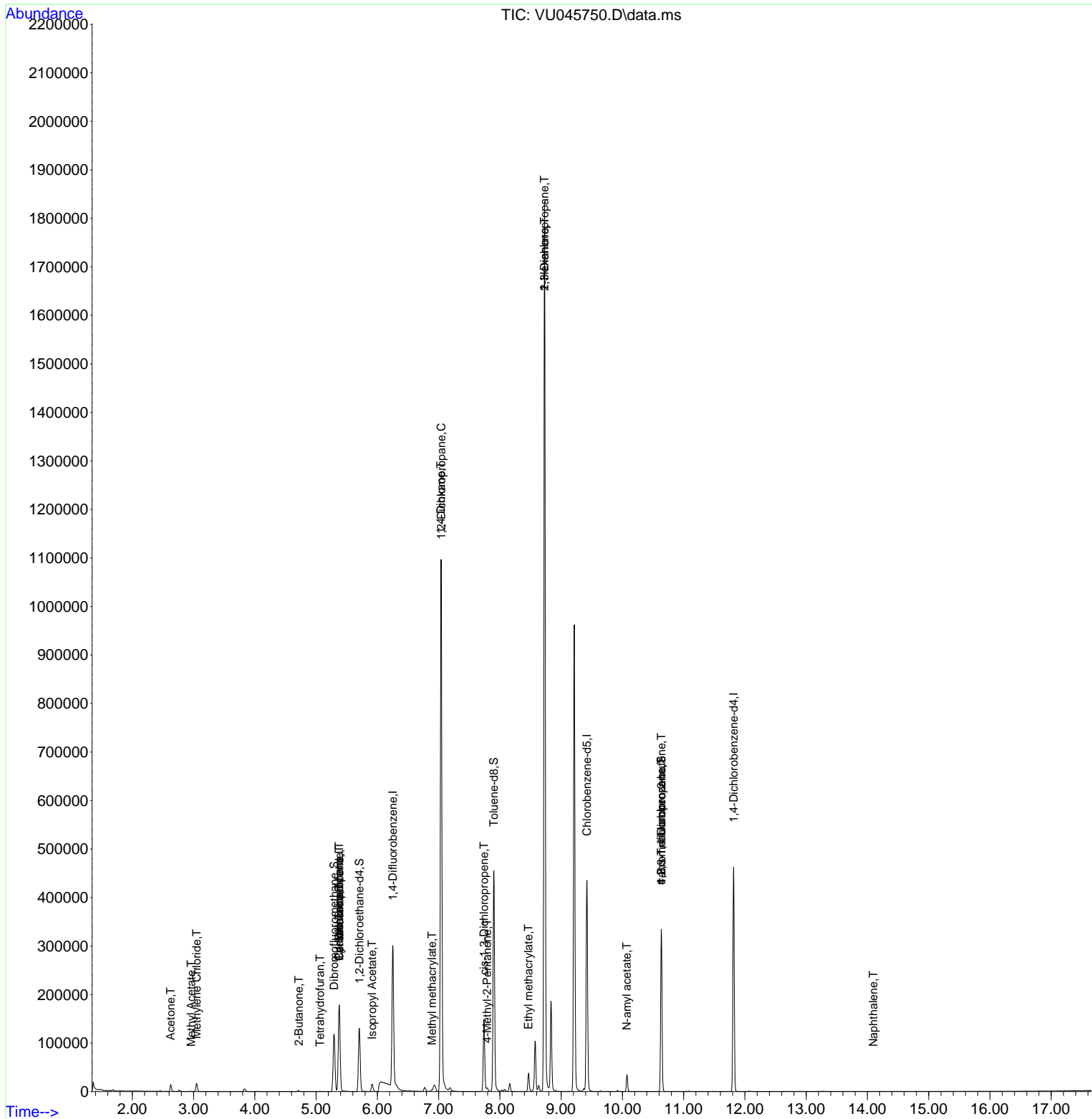
Internal Standards						
1) Pentafluorobenzene	5.378	168	116221	50.000	ug/l	0.00
34) 1,4-Difluorobenzene	6.253	114	226562	50.000	ug/l	0.00
63) Chlorobenzene-d5	9.420	117	234661	50.000	ug/l	0.00
72) 1,4-Dichlorobenzene-d4	11.815	152	113893	50.000	ug/l	0.00
System Monitoring Compounds						
33) 1,2-Dichloroethane-d4	5.706	65	97091	55.782	ug/l	0.00
Spiked Amount	50.000	Range 78 - 117	Recovery	=	111.560%	
35) Dibromofluoromethane	5.292	113	75374	49.830	ug/l	0.00
Spiked Amount	50.000	Range 75 - 124	Recovery	=	99.660%	
50) Toluene-d8	7.902	98	299838	53.307	ug/l	0.00
Spiked Amount	50.000	Range 92 - 112	Recovery	=	106.620%	
62) 4-Bromofluorobenzene	10.635	95	111068	49.244	ug/l	0.00
Spiked Amount	50.000	Range 83 - 123	Recovery	=	98.480%	
Target Compounds						
						Qvalue
16) Acetone	2.626	43	16024	18.085	ug/l	98
18) Methyl Acetate	2.961	43	804	0.266	ug/l #	65
20) Methylene Chloride	3.047	84	8339	5.417	ug/l	95
25) 2-Butanone	4.716	43	3129	2.546	ug/l	91
29) Tetrahydrofuran	5.063	42	469	0.624	ug/l #	34
31) Cyclohexane	5.375	56	2814	1.108	ug/l #	9
36) 1,1-Dichloropropene	5.375	75	10940	4.952	ug/l #	50
38) Carbon Tetrachloride	5.375	117	13024	5.848	ug/l #	16
43) Isopropyl Acetate	5.915	43	16588	4.274	ug/l	97
45) 1,2-Dichloropropane	7.044	63	1202	0.695	ug/l #	43
48) Methyl methacrylate	6.893	41	5206	2.914	ug/l #	13
49) 1,4-Dioxane	7.037	88	76	1.654	ug/l #	1
51) 4-Methyl-2-Pentanone	7.793	43	4331	1.692	ug/l	88
54) cis-1,3-Dichloropropene	7.742	75	27358	9.850	ug/l #	63
56) Ethyl methacrylate	8.465	69	143	2.470	ug/l #	1
57) 1,3-Dichloropropane	8.729	76	18226	6.098	ug/l #	42
59) 2-Hexanone	8.729	43	235886	110.221	ug/l #	49
74) N-amyl acetate	10.073	43	9365	2.790	ug/l #	50
76) 1,2,3-Trichloropropane	10.635	75	58314	16.884	ug/l #	42
81) trans-1,4-Dichloro-2-b...	10.635	75	58314	54.992	ug/l #	12
95) Naphthalene	14.095	128	160	1.046	ug/l #	69

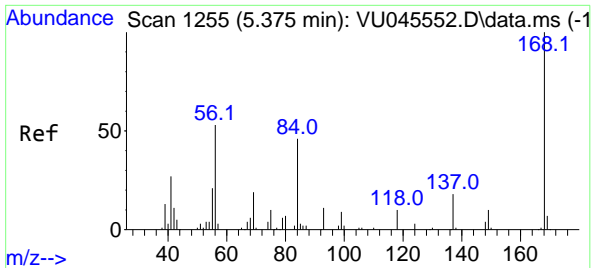
(#) = qualifier out of range (m) = manual integration (+) = signals summed

Data Path : Z:\voasrv\HPCHEM1\MSVOA_U\Data\VU111121\
 Data File : VU045750.D
 Acq On : 11 Nov 2021 19:42
 Operator : SY/MD
 Sample : PB140643TB
 Misc : 5.0mL/MSVOA_U/WATER
 ALS Vial : 24 Sample Multiplier: 1

Instrument :
 MSVOA_U
 ClientSampleId :
 PB140643TB

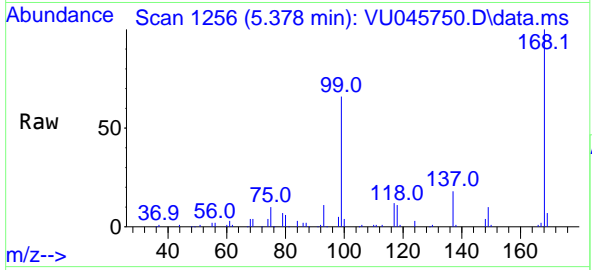
Quant Time: Nov 12 06:13:05 2021
 Quant Method : Z:\voasrv\HPCHEM1\MSVOA_U\Method\82U110521W.M
 Quant Title : SW846 8260
 QLast Update : Fri Nov 05 13:35:16 2021
 Response via : Initial Calibration



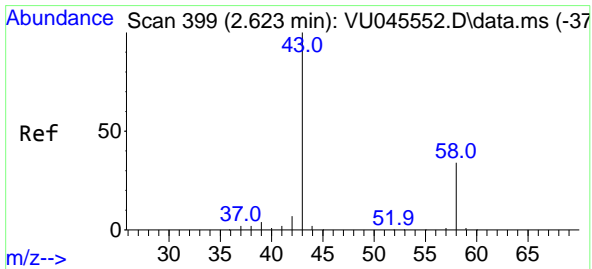
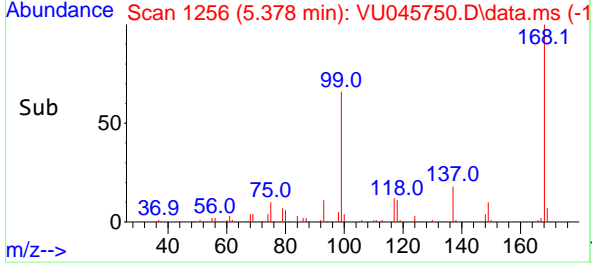
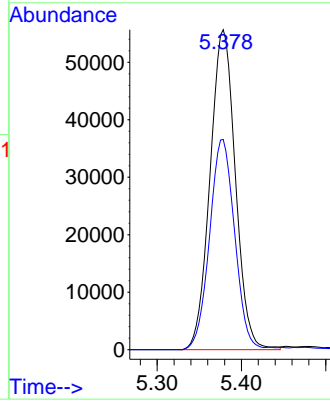


#1
 Pentafluorobenzene
 Concen: 50.000 ug/l
 RT: 5.378 min Scan# 11
 Delta R.T. 0.003 min
 Lab File: VU045750.D
 Acq: 11 Nov 2021 19:42

Instrument :
 MSVOA_U
 ClientSampleId :
 PB140643TB

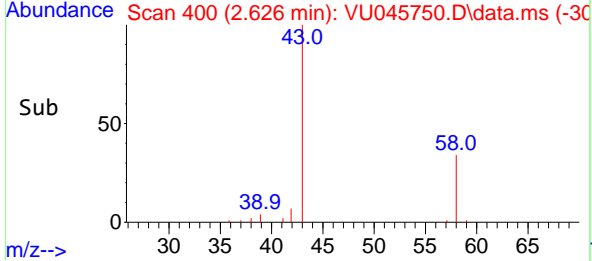
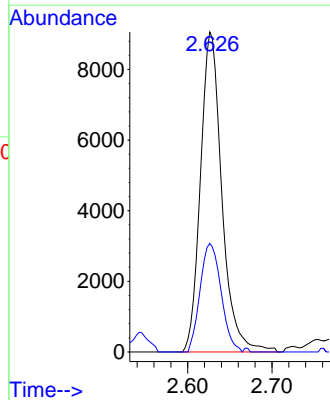
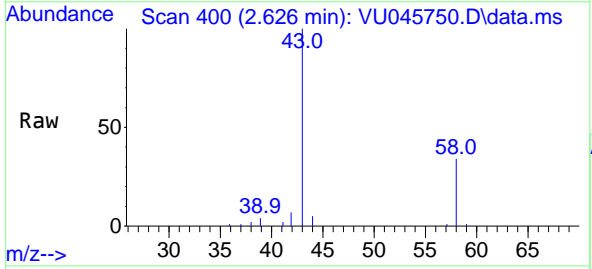


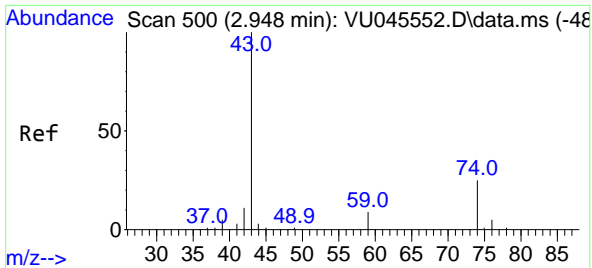
Tgt Ion:168 Resp: 116221
 Ion Ratio Lower Upper
 168 100
 99 65.7 51.0 76.6



#16
 Acetone
 Concen: 18.085 ug/l
 RT: 2.626 min Scan# 400
 Delta R.T. 0.003 min
 Lab File: VU045750.D
 Acq: 11 Nov 2021 19:42

Tgt Ion: 43 Resp: 16024
 Ion Ratio Lower Upper
 43 100
 58 33.9 26.2 39.2



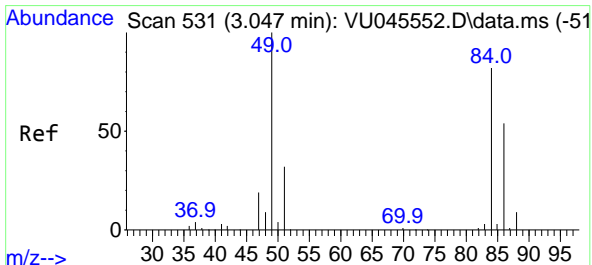
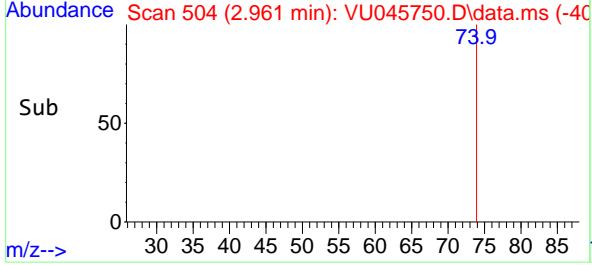
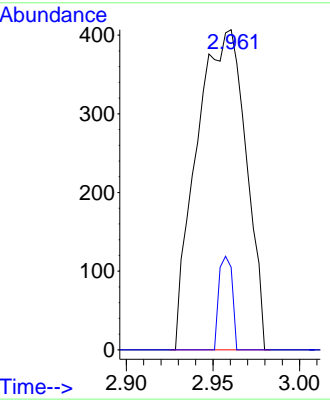
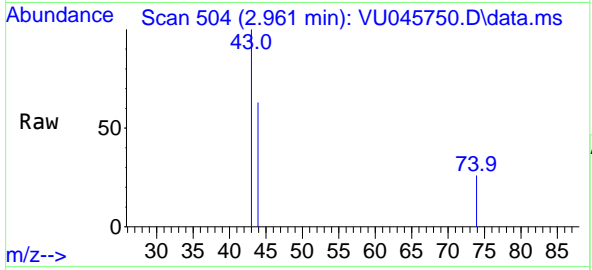


#18
 Methyl Acetate
 Concen: 0.266 ug/l
 RT: 2.961 min Scan# 504
 Delta R.T. 0.013 min
 Lab File: VU045750.D
 Acq: 11 Nov 2021 19:42

Instrument : MSVOA_U
 ClientSampleId : PB140643TB

Tgt Ion: 43 Resp: 804

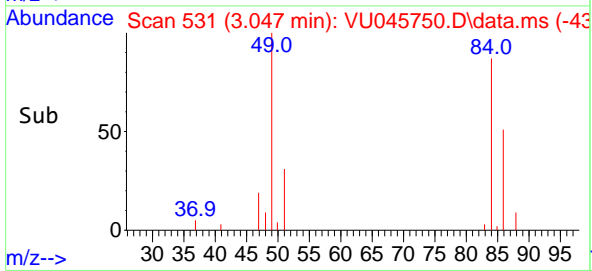
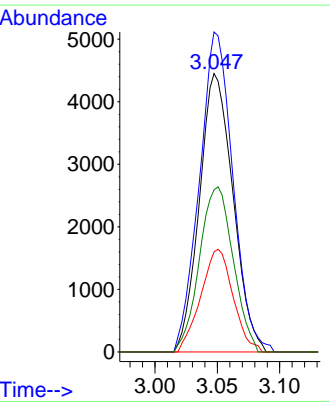
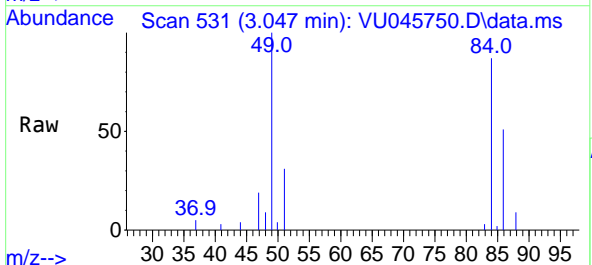
Ion	Ratio	Lower	Upper
43	100		
74	7.8	20.2	30.2#

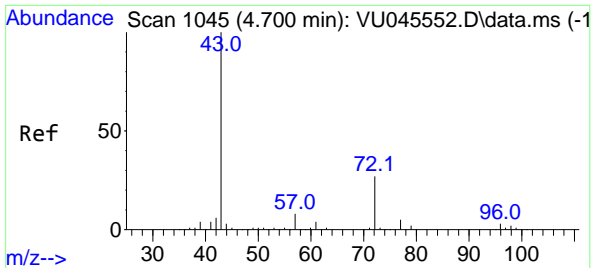


#20
 Methylene Chloride
 Concen: 5.417 ug/l
 RT: 3.047 min Scan# 531
 Delta R.T. -0.000 min
 Lab File: VU045750.D
 Acq: 11 Nov 2021 19:42

Tgt Ion: 84 Resp: 8339

Ion	Ratio	Lower	Upper
84	100		
49	114.9	96.4	144.6
51	36.0	30.5	45.7
86	58.2	50.3	75.5

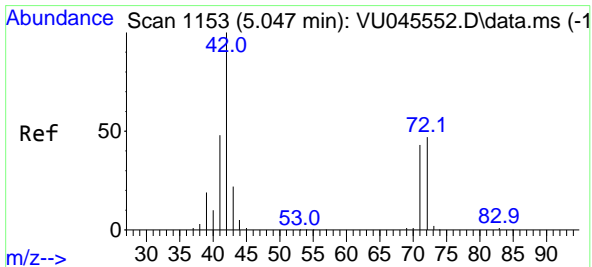
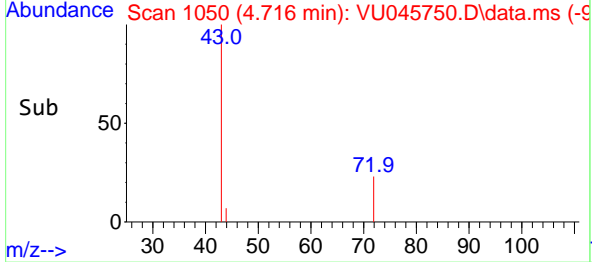
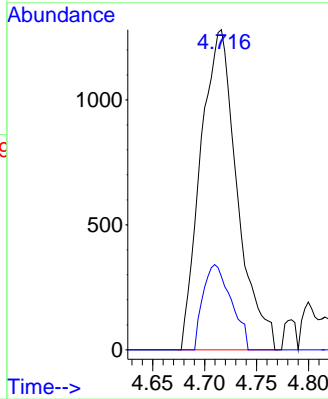
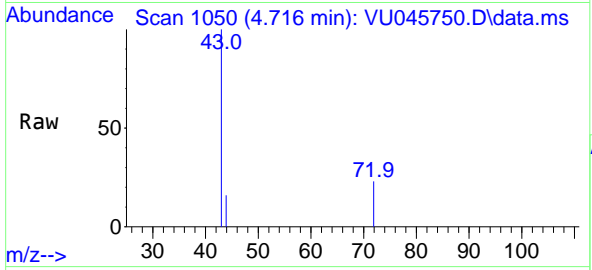




#25
 2-Butanone
 Concen: 2.546 ug/l
 RT: 4.716 min Scan# 1045
 Delta R.T. 0.016 min
 Lab File: VU045750.D
 Acq: 11 Nov 2021 19:42

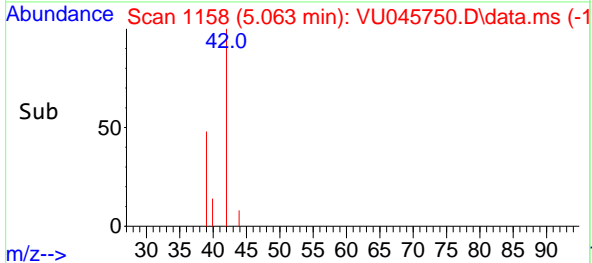
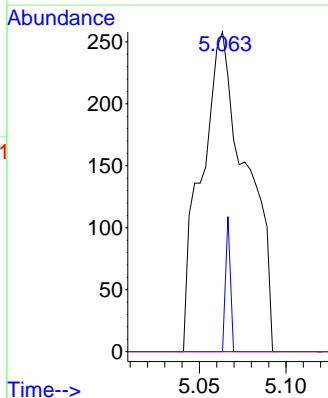
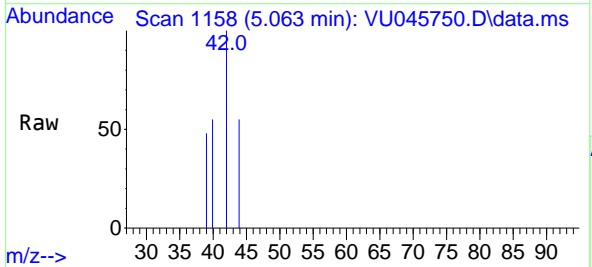
Instrument : MSVOA_U
 ClientSampleId : PB140643TB

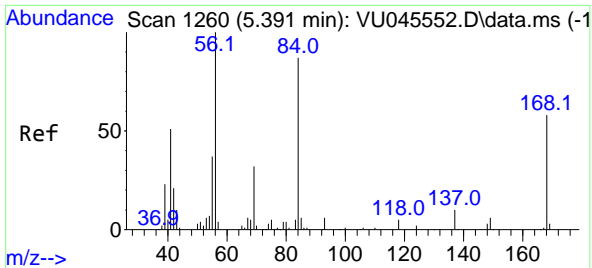
Tgt Ion: 43 Resp: 3129
 Ion Ratio Lower Upper
 43 100
 72 22.9 22.0 33.0



#29
 Tetrahydrofuran
 Concen: 0.624 ug/l
 RT: 5.063 min Scan# 1158
 Delta R.T. 0.016 min
 Lab File: VU045750.D
 Acq: 11 Nov 2021 19:42

Tgt Ion: 42 Resp: 469
 Ion Ratio Lower Upper
 42 100
 72 4.5 38.2 57.4#
 71 0.0 35.4 53.2#



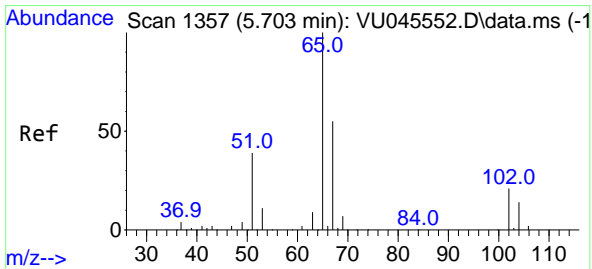
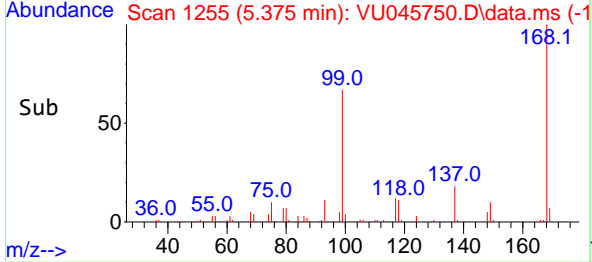
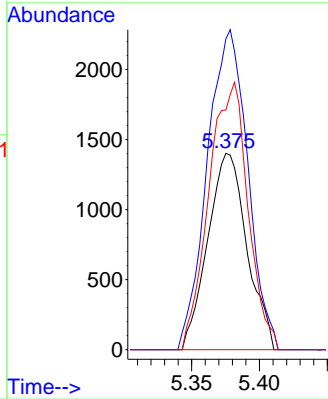
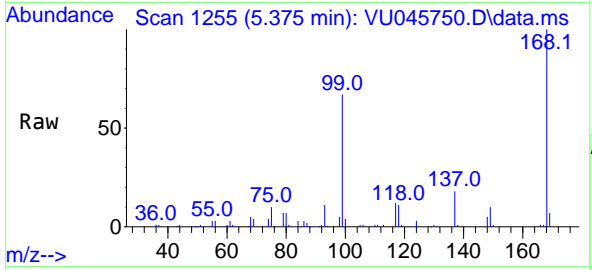


#31
 Cyclohexane
 Concen: 1.108 ug/l
 RT: 5.375 min Scan# 11
 Delta R.T. -0.016 min
 Lab File: VU045750.D
 Acq: 11 Nov 2021 19:42

Instrument : MSVOA_U
 ClientSampleId : PB140643TB

Tgt Ion: 56 Resp: 2814

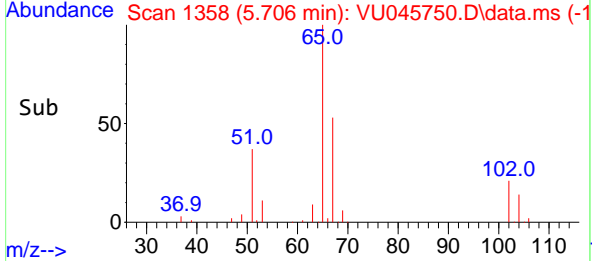
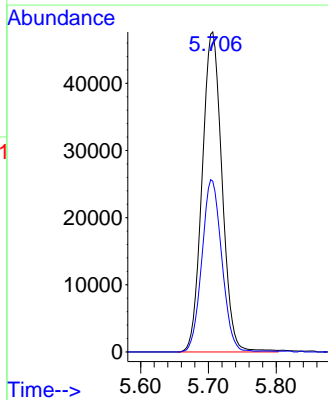
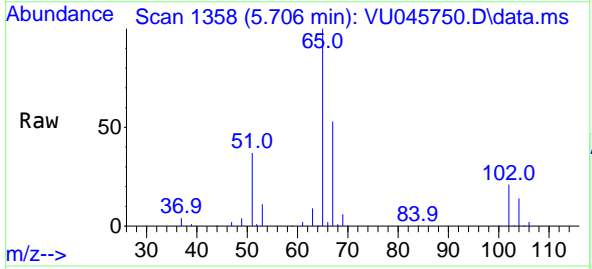
Ion	Ratio	Lower	Upper
56	100		
69	158.3	26.4	39.6#
84	122.0	68.4	102.6#

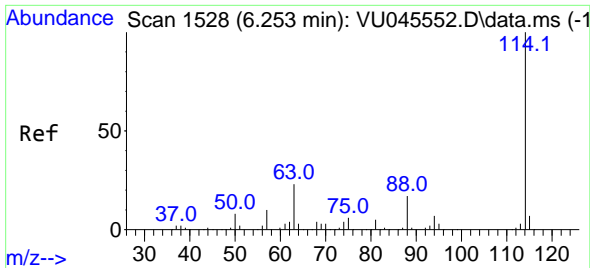


#33
 1,2-Dichloroethane-d4
 Concen: 55.782 ug/l
 RT: 5.706 min Scan# 1358
 Delta R.T. 0.003 min
 Lab File: VU045750.D
 Acq: 11 Nov 2021 19:42

Tgt Ion: 65 Resp: 97091

Ion	Ratio	Lower	Upper
65	100		
67	53.8	0.0	105.8



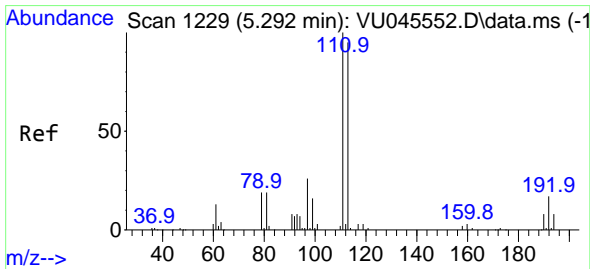
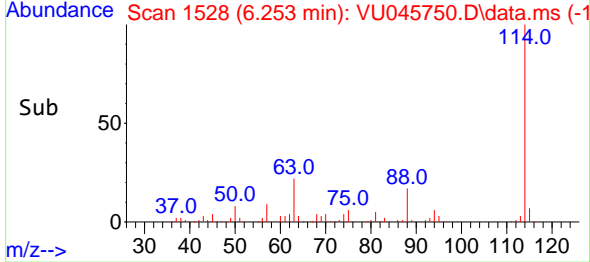
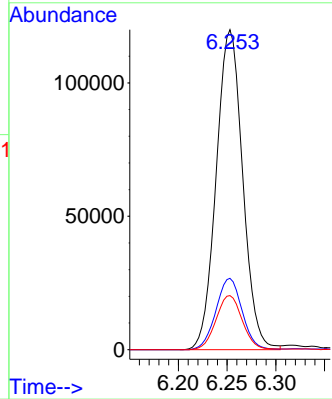
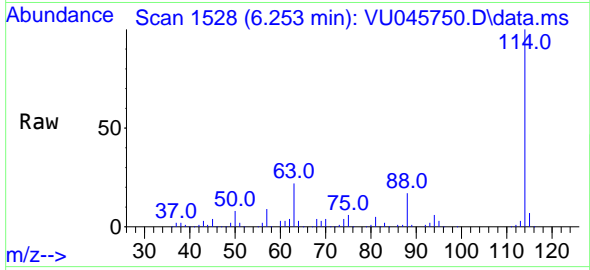


#34
 1,4-Difluorobenzene
 Concen: 50.000 ug/l
 RT: 6.253 min Scan# 11
 Delta R.T. -0.000 min
 Lab File: VU045750.D
 Acq: 11 Nov 2021 19:42

Instrument : MSVOA_U
 ClientSampleId : PB140643TB

Tgt Ion:114 Resp: 226562

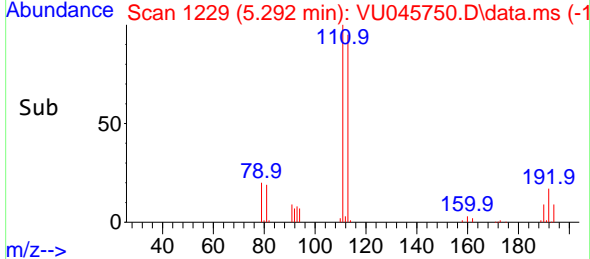
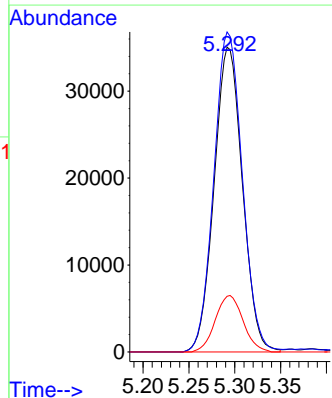
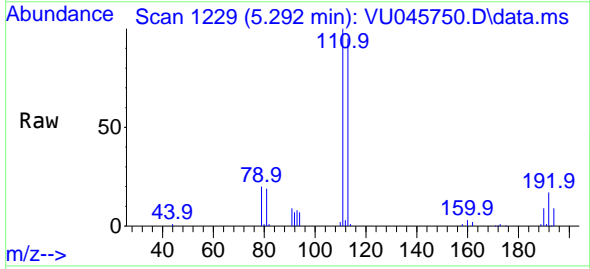
Ion	Ratio	Lower	Upper
114	100		
63	22.3	0.0	45.6
88	16.9	0.0	33.8

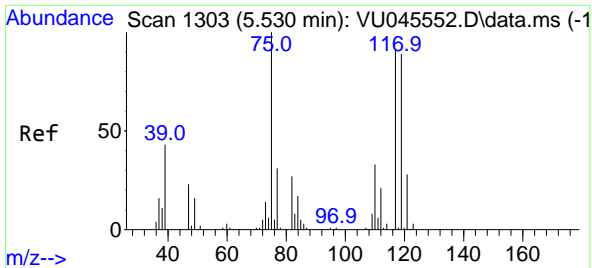


#35
 Dibromofluoromethane
 Concen: 49.830 ug/l
 RT: 5.292 min Scan# 1229
 Delta R.T. -0.000 min
 Lab File: VU045750.D
 Acq: 11 Nov 2021 19:42

Tgt Ion:113 Resp: 75374

Ion	Ratio	Lower	Upper
113	100		
111	105.3	82.8	124.2
192	18.2	14.8	22.2



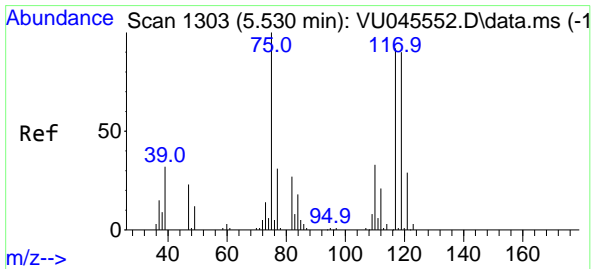
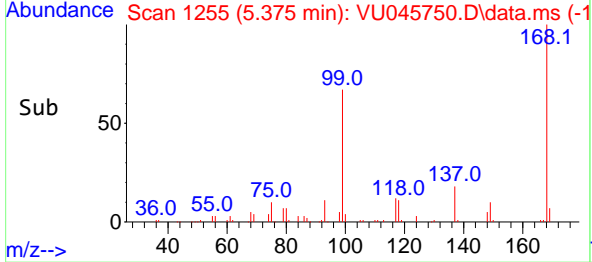
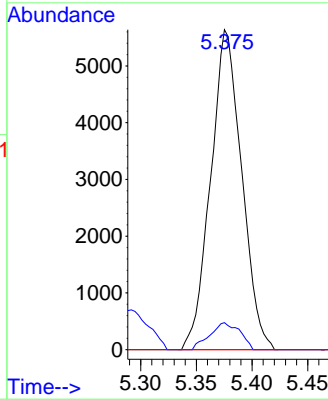
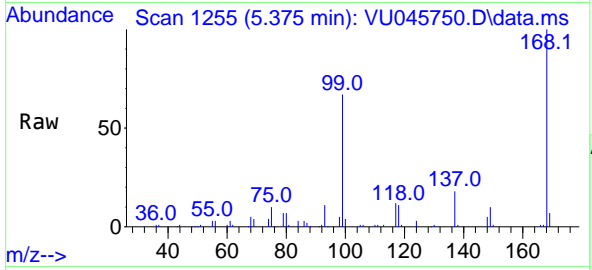


#36
 1,1-Dichloropropene
 Concen: 4.952 ug/l
 RT: 5.375 min Scan# 1111
 Delta R.T. -0.154 min
 Lab File: VU045750.D
 Acq: 11 Nov 2021 19:42

Instrument : MSVOA_U
 ClientSampleId : PB140643TB

Tgt Ion: 75 Resp: 10940

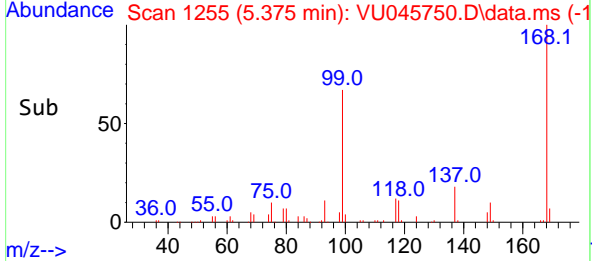
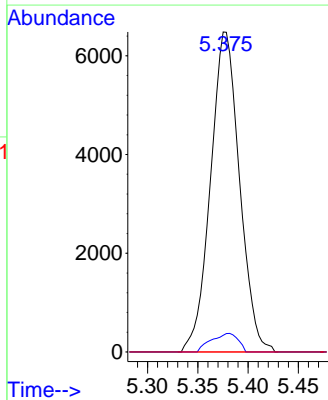
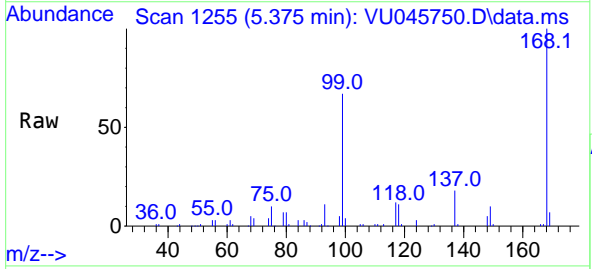
Ion	Ratio	Lower	Upper
75	100		
110	8.2	16.7	50.0#
77	0.0	25.0	37.4#

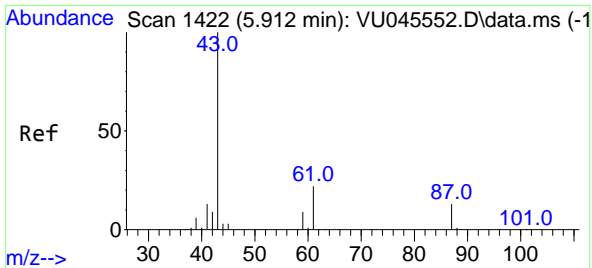


#38
 Carbon Tetrachloride
 Concen: 5.848 ug/l
 RT: 5.375 min Scan# 1255
 Delta R.T. -0.154 min
 Lab File: VU045750.D
 Acq: 11 Nov 2021 19:42

Tgt Ion: 117 Resp: 13024

Ion	Ratio	Lower	Upper
117	100		
119	5.2	77.4	116.0#
121	0.0	24.8	37.2#





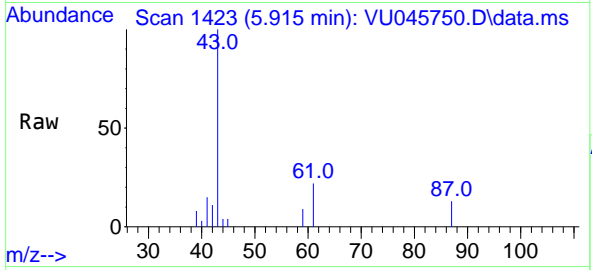
#43
 Isopropyl Acetate
 Concen: 4.274 ug/l
 RT: 5.915 min Scan# 1422
 Delta R.T. 0.003 min
 Lab File: VU045750.D
 Acq: 11 Nov 2021 19:42

Instrument :

MSVOA_U

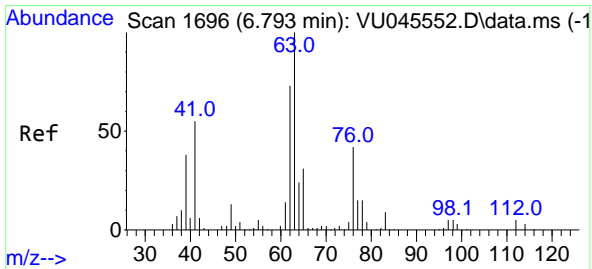
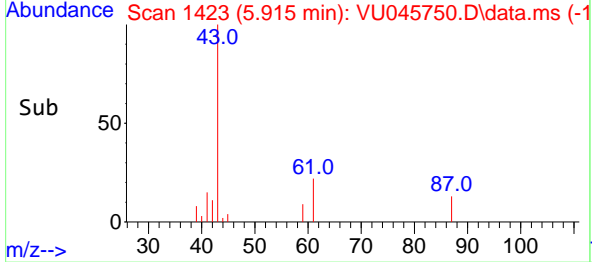
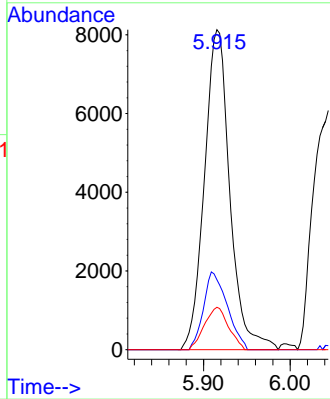
ClientSampleId :

PB140643TB

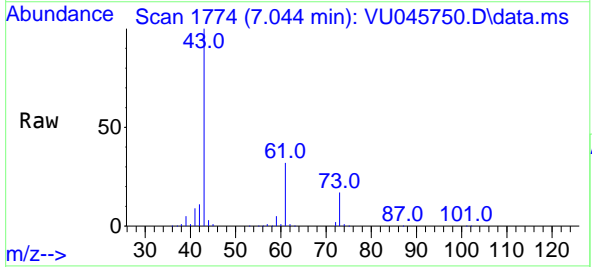


Tgt Ion: 43 Resp: 16588

Ion	Ratio	Lower	Upper
43	100		
61	22.7	16.9	25.3
87	12.5	11.0	16.4

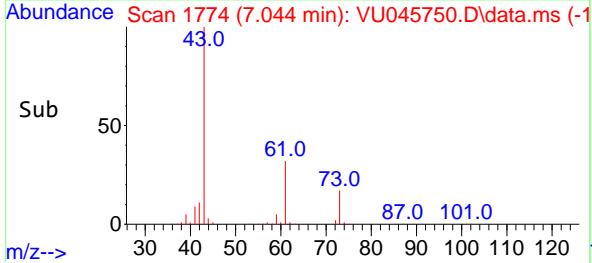
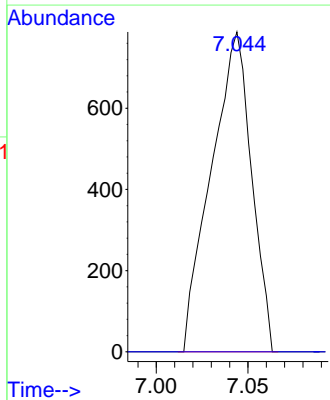


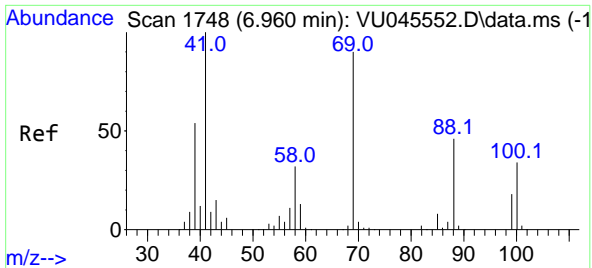
#45
 1,2-Dichloropropane
 Concen: 0.695 ug/l
 RT: 7.044 min Scan# 1774
 Delta R.T. 0.251 min
 Lab File: VU045750.D
 Acq: 11 Nov 2021 19:42



Tgt Ion: 63 Resp: 1202

Ion	Ratio	Lower	Upper
63	100		
65	0.0	25.7	38.5#

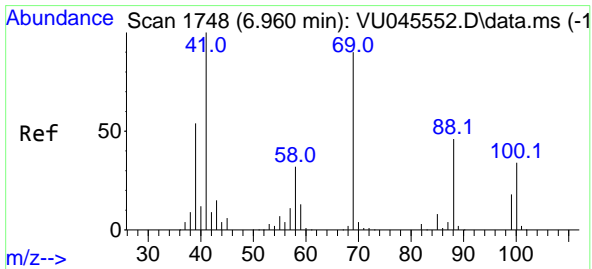
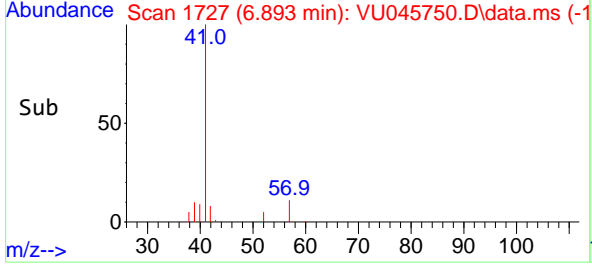
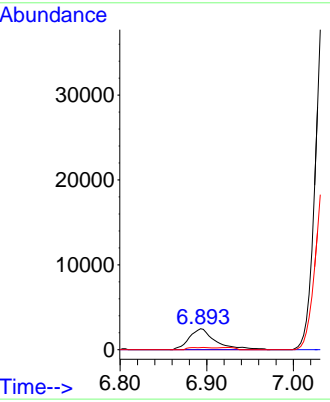
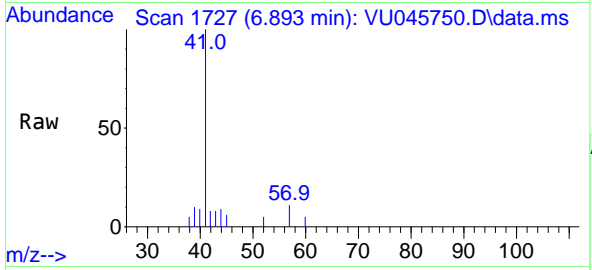




#48
 Methyl methacrylate
 Concen: 2.914 ug/l
 RT: 6.893 min Scan# 1727
 Delta R.T. -0.068 min
 Lab File: VU045750.D
 Acq: 11 Nov 2021 19:42

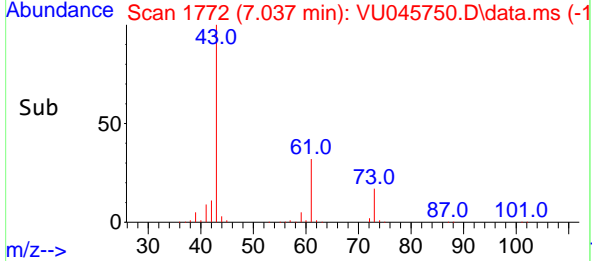
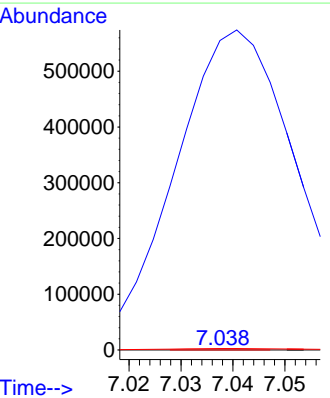
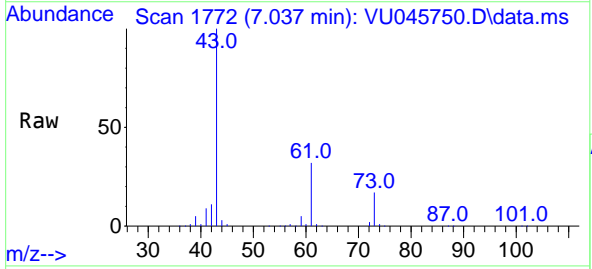
Instrument : MSVOA_U
 ClientSampleId : PB140643TB

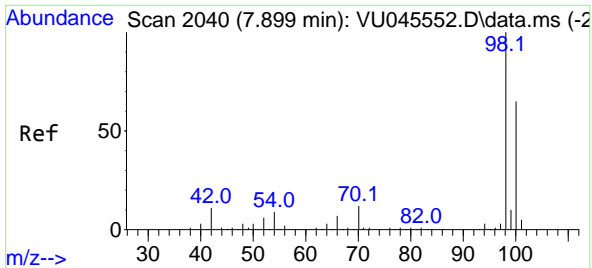
Tgt Ion: 41 Resp: 5206
 Ion Ratio Lower Upper
 41 100
 69 0.0 70.2 105.2#
 39 0.0 43.9 65.9#



#49
 1,4-Dioxane
 Concen: 1.654 ug/l
 RT: 7.037 min Scan# 1772
 Delta R.T. 0.077 min
 Lab File: VU045750.D
 Acq: 11 Nov 2021 19:42

Tgt Ion: 88 Resp: 76
 Ion Ratio Lower Upper
 88 100
 43 1299848.7 0.0 0.0#
 58 6272.4 58.7 88.1#

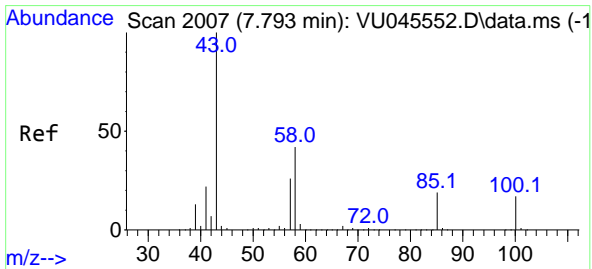
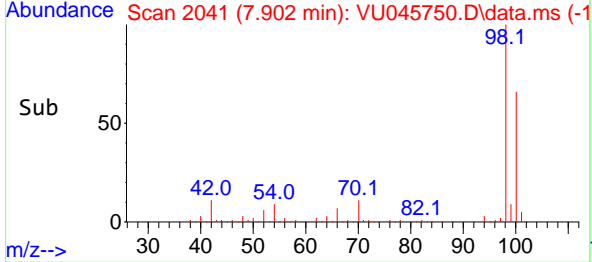
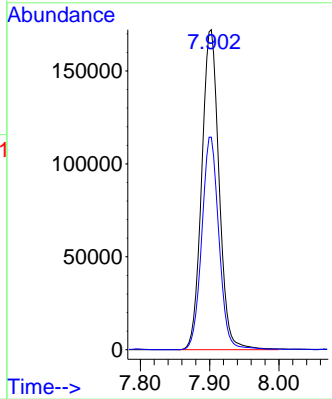
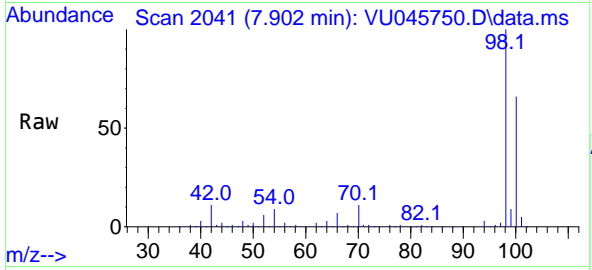




#50
 Toluene-d8
 Concen: 53.307 ug/l
 RT: 7.902 min Scan# 2041
 Delta R.T. 0.003 min
 Lab File: VU045750.D
 Acq: 11 Nov 2021 19:42

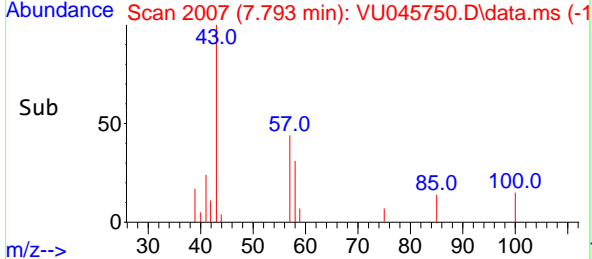
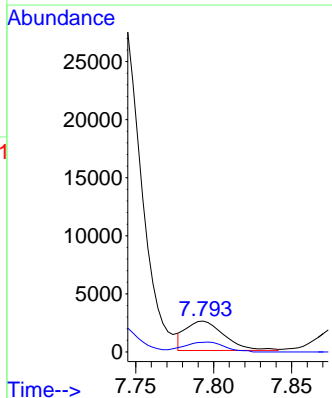
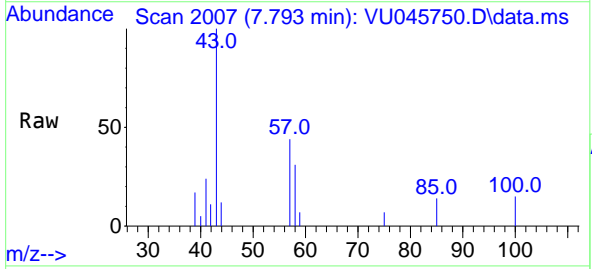
Instrument : MSVOA_U
 ClientSampleId : PB140643TB

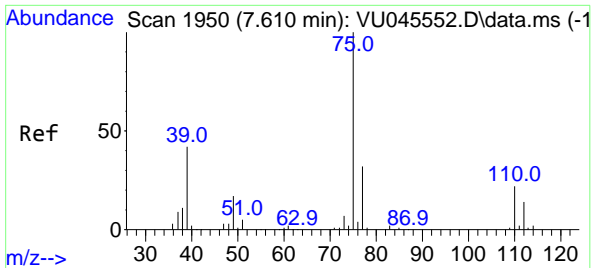
Tgt Ion: 98 Resp: 299838
 Ion Ratio Lower Upper
 98 100
 100 65.6 52.5 78.7



#51
 4-Methyl-2-Pentanone
 Concen: 1.692 ug/l
 RT: 7.793 min Scan# 2007
 Delta R.T. -0.000 min
 Lab File: VU045750.D
 Acq: 11 Nov 2021 19:42

Tgt Ion: 43 Resp: 4331
 Ion Ratio Lower Upper
 43 100
 58 35.0 33.8 50.8





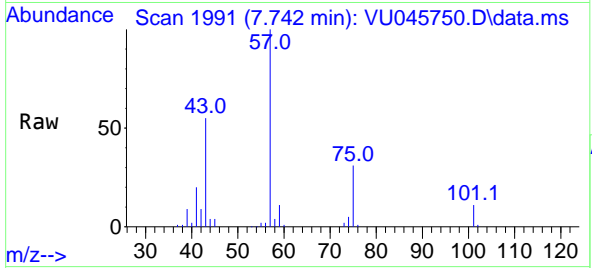
#54
 cis-1,3-Dichloropropene
 Concen: 9.850 ug/l
 RT: 7.742 min Scan# 1950
 Delta R.T. 0.132 min
 Lab File: VU045750.D
 Acq: 11 Nov 2021 19:42

Instrument :

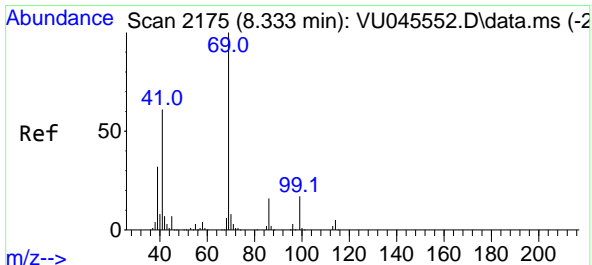
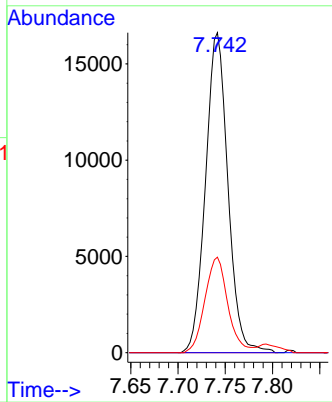
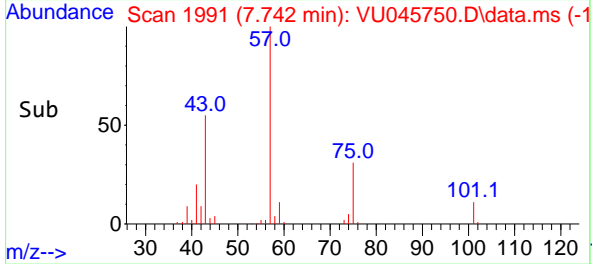
MSVOA_U

ClientSampleId :

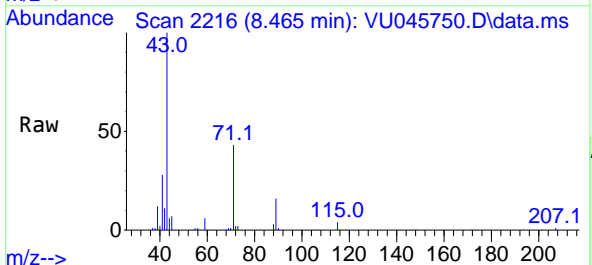
PB140643TB



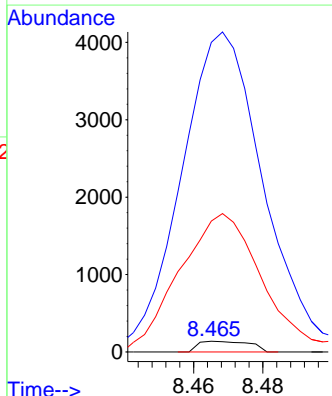
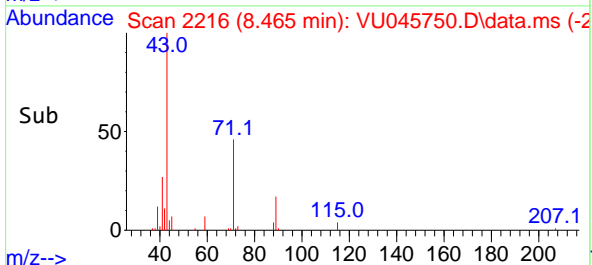
Tgt Ion: 75 Resp: 27358
 Ion Ratio Lower Upper
 75 100
 77 0.0 24.6 37.0#
 39 29.8 37.1 55.7#

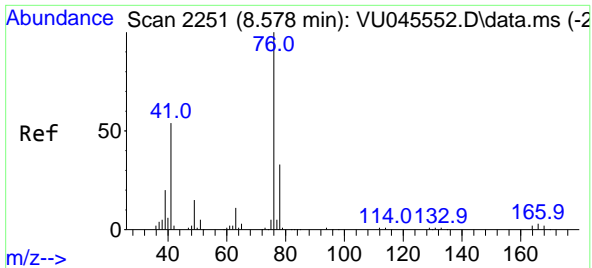


#56
 Ethyl methacrylate
 Concen: 2.470 ug/l
 RT: 8.465 min Scan# 2216
 Delta R.T. 0.132 min
 Lab File: VU045750.D
 Acq: 11 Nov 2021 19:42



Tgt Ion: 69 Resp: 143
 Ion Ratio Lower Upper
 69 100
 41 4914.7 51.0 76.4#
 39 2113.3 26.6 39.8#

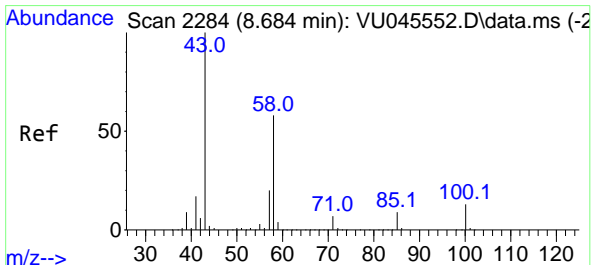
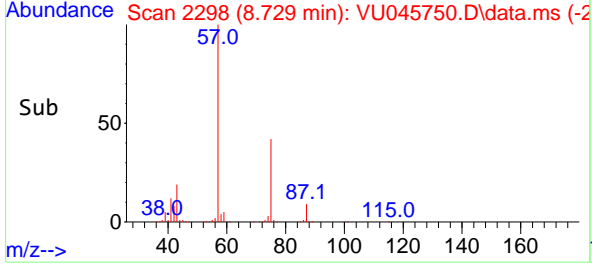
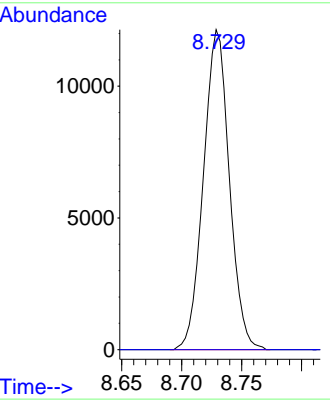
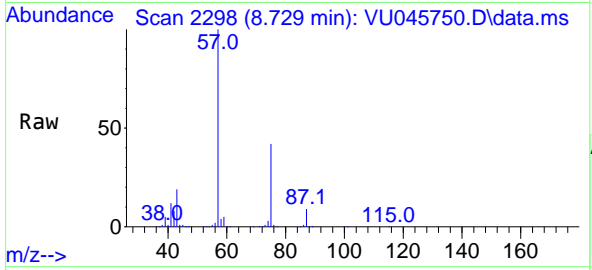




#57
 1,3-Dichloropropane
 Concen: 6.098 ug/l
 RT: 8.729 min Scan# 21
 Delta R.T. 0.151 min
 Lab File: VU045750.D
 Acq: 11 Nov 2021 19:42

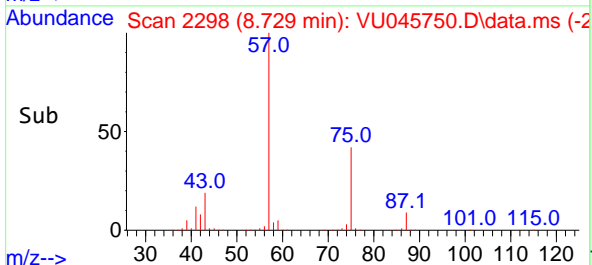
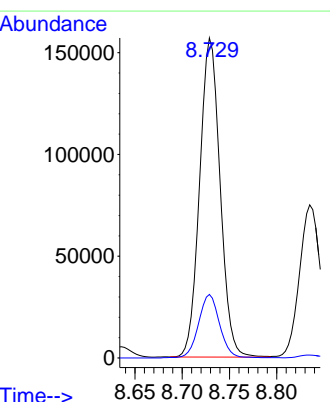
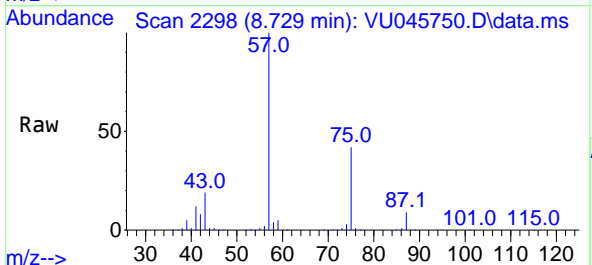
Instrument : MSVOA_U
 ClientSampleId : PB140643TB

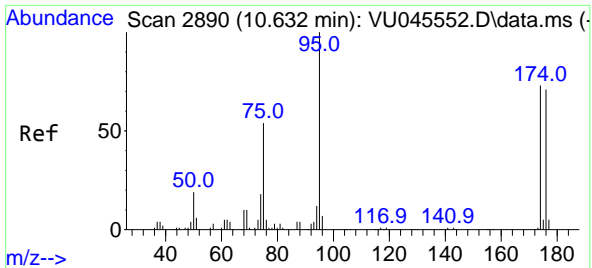
Tgt Ion: 76 Resp: 18226
 Ion Ratio Lower Upper
 76 100
 78 0.0 25.8 38.8#



#59
 2-Hexanone
 Concen: 110.221 ug/l
 RT: 8.729 min Scan# 2298
 Delta R.T. 0.045 min
 Lab File: VU045750.D
 Acq: 11 Nov 2021 19:42

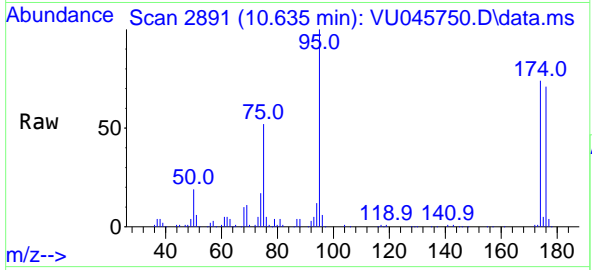
Tgt Ion: 43 Resp: 235886
 Ion Ratio Lower Upper
 43 100
 58 20.7 29.5 88.6#



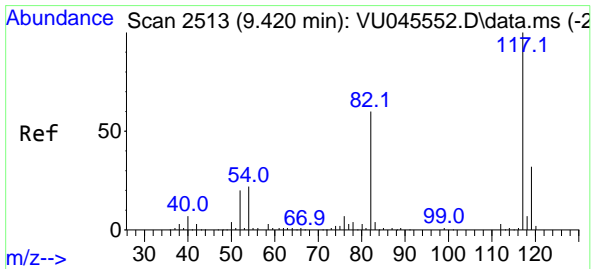
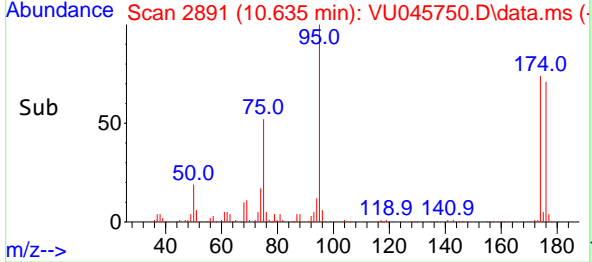
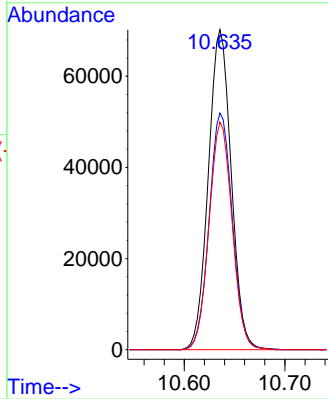


#62
 4-Bromofluorobenzene
 Concen: 49.244 ug/l
 RT: 10.635 min Scan# 21
 Delta R.T. 0.003 min
 Lab File: VU045750.D
 Acq: 11 Nov 2021 19:42

Instrument : MSVOA_U
 ClientSampleId : PB140643TB

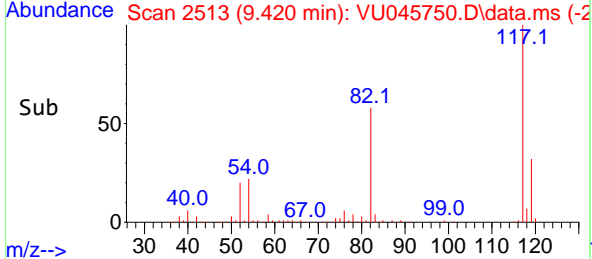
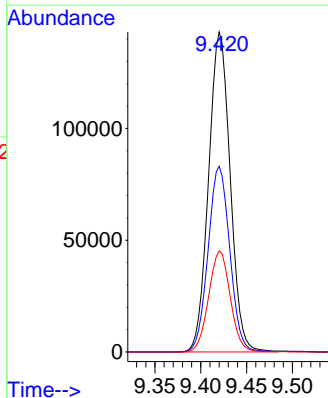
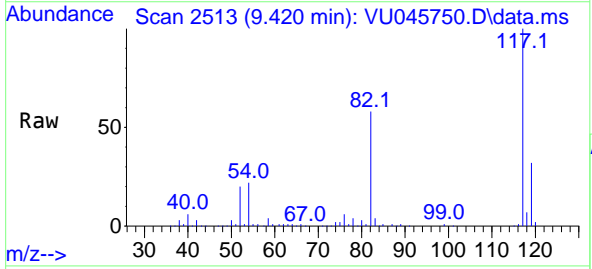


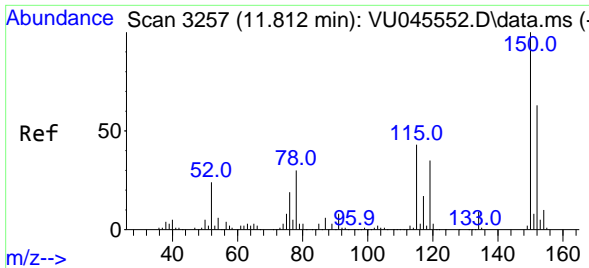
Tgt Ion: 95 Resp: 111068
 Ion Ratio Lower Upper
 95 100
 174 74.9 0.0 141.8
 176 71.7 0.0 138.2



#63
 Chlorobenzene-d5
 Concen: 50.000 ug/l
 RT: 9.420 min Scan# 2513
 Delta R.T. 0.000 min
 Lab File: VU045750.D
 Acq: 11 Nov 2021 19:42

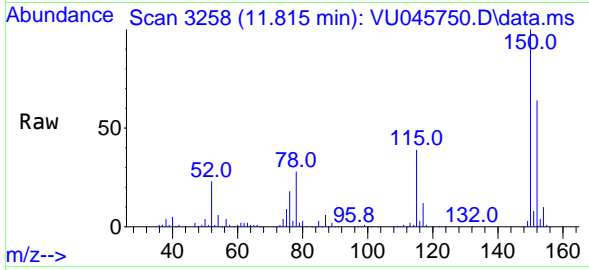
Tgt Ion: 117 Resp: 234661
 Ion Ratio Lower Upper
 117 100
 82 58.0 47.8 71.8
 119 31.6 25.8 38.8



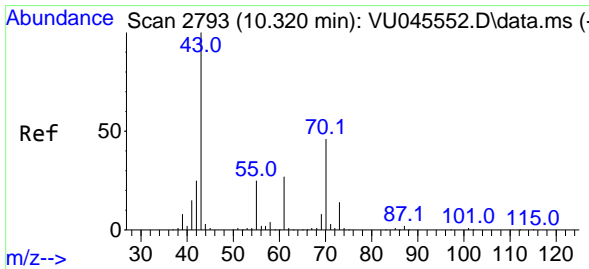
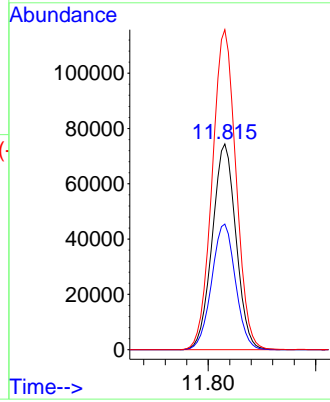
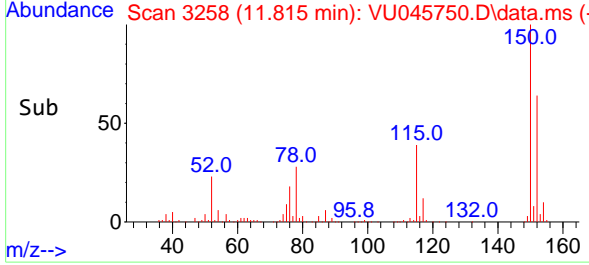


#72
 1,4-Dichlorobenzene-d4
 Concen: 50.000 ug/l
 RT: 11.815 min Scan# 31
 Delta R.T. 0.003 min
 Lab File: VU045750.D
 Acq: 11 Nov 2021 19:42

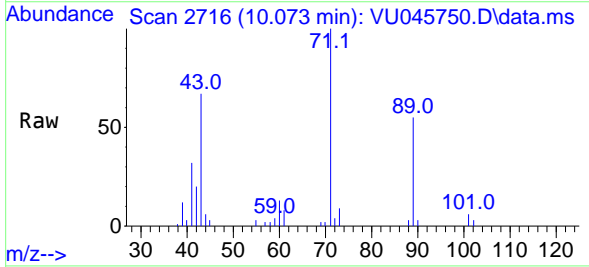
Instrument :
 MSVOA_U
 ClientSampleId :
 PB140643TB



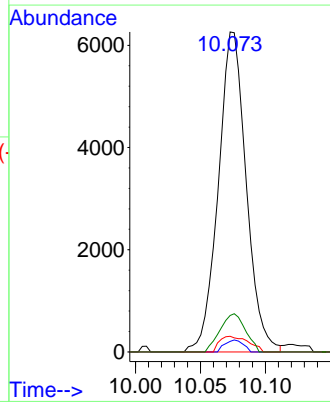
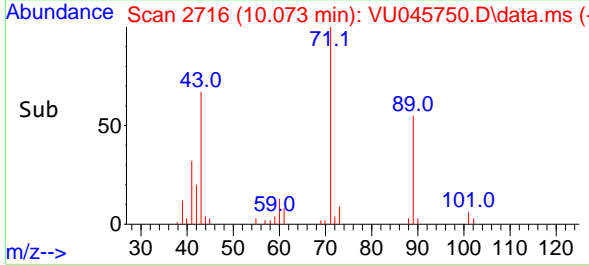
Tgt Ion:152 Resp: 113893
 Ion Ratio Lower Upper
 152 100
 115 61.4 42.7 128.1
 150 156.3 0.0 346.8

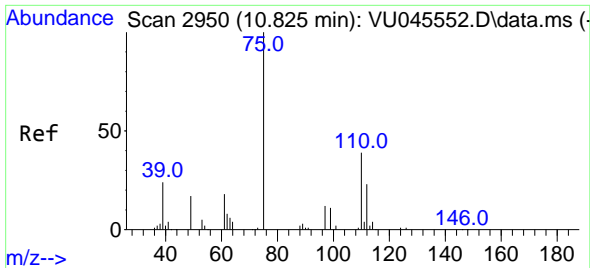


#74
 N-ethyl acetate
 Concen: 2.790 ug/l
 RT: 10.073 min Scan# 2716
 Delta R.T. -0.248 min
 Lab File: VU045750.D
 Acq: 11 Nov 2021 19:42



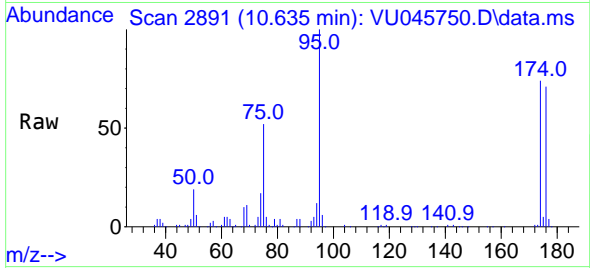
Tgt Ion: 43 Resp: 9365
 Ion Ratio Lower Upper
 43 100
 70 2.5 36.9 55.3#
 55 5.0 20.6 31.0#
 61 10.8 20.5 30.7#



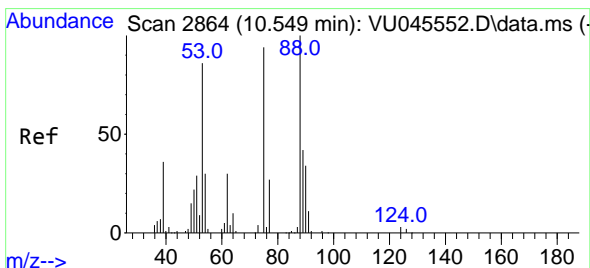
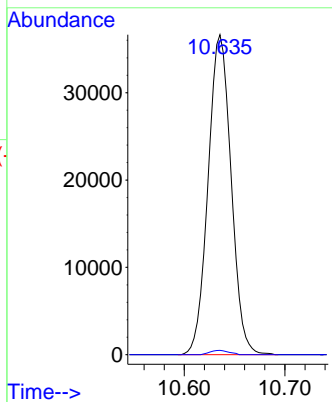
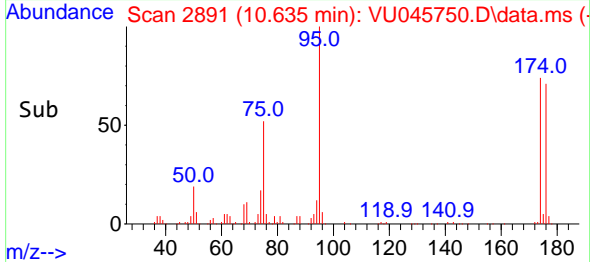


#76
 1,2,3-Trichloropropane
 Concen: 16.884 ug/l
 RT: 10.635 min Scan# 2891
 Delta R.T. -0.190 min
 Lab File: VU045750.D
 Acq: 11 Nov 2021 19:42

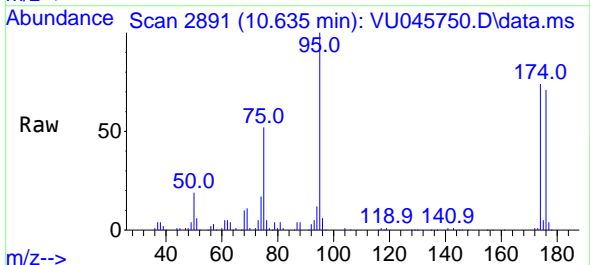
Instrument : MSVOA_U
 ClientSampleId : PB140643TB



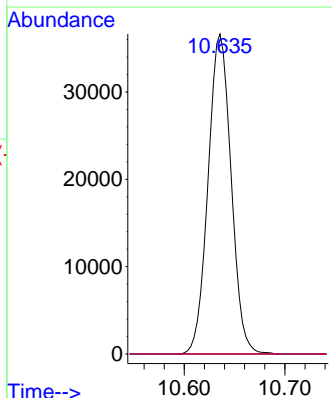
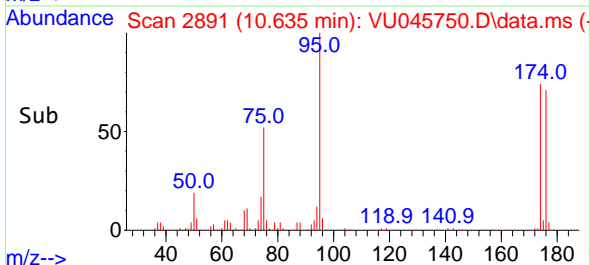
Tgt Ion: 75 Resp: 58314
 Ion Ratio Lower Upper
 75 100
 77 1.1 17.1 51.3#

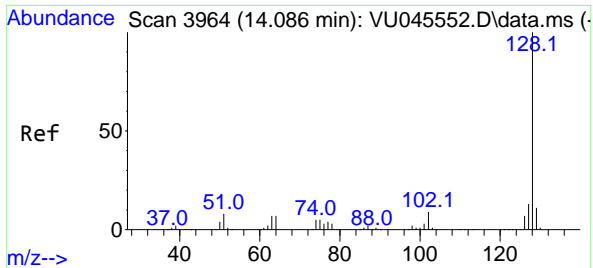


#81
 trans-1,4-Dichloro-2-butene
 Concen: 54.992 ug/l
 RT: 10.635 min Scan# 2891
 Delta R.T. 0.086 min
 Lab File: VU045750.D
 Acq: 11 Nov 2021 19:42



Tgt Ion: 75 Resp: 58314
 Ion Ratio Lower Upper
 75 100
 53 0.0 76.2 114.4#
 89 0.0 34.0 51.0#





#95
 Naphthalene
 Concen: 1.046 ug/l
 RT: 14.095 min Scan# 3967
 Delta R.T. 0.009 min
 Lab File: VU045750.D
 Acq: 11 Nov 2021 19:42

Instrument : MSVOA_U
 ClientSampleId : PB140643TB

Tgt Ion:128 Resp: 160

Ion	Ratio	Lower	Upper
128	100		
127	0.0	10.6	15.8#
129	0.0	8.6	13.0#

