

Data Path : Z:\voasrv\HPCHEM1\MSVOA_U\Data\VU111122\
 Data File : VU051828.D
 Acq On : 11 Nov 2022 20:37
 Operator : JC/MD
 Sample : VSTDCCC005
 Misc : 25.0mL/MSVOA_U/WATER
 ALS Vial : 16 Sample Multiplier: 1

Instrument :
 MSVOA_U
 ClientSampleId :
 VSTD005199

Quant Time: Nov 12 01:25:52 2022
 Quant Method : Z:\voasrv\HPCHEM1\MSVOA_U\Method\SFAMUTR102822WMA.M
 Quant Title : TRACE VOA SFAM1.0
 QLast Update : Sat Nov 12 01:22:06 2022
 Response via : Initial Calibration

Compound	R.T.	QIon	Response	Conc	Units	Dev(Min)
Internal Standards						
1) 1,4-Difluorobenzene	6.247	114	231150	5.000	ug/L	0.00
28) Chlorobenzene-d5	9.414	117	229028	5.000	ug/L	0.00
58) 1,4-Dichlorobenzene-d4	11.809	152	113756	5.000	ug/L	0.00
System Monitoring Compounds						
4) Vinyl Chloride-d3	1.597	65	76296	4.383	ug/L	0.00
Spiked Amount	5.000	Range 40 - 130	Recovery	=	87.600%	
7) Chloroethane-d5	1.909	69	69045	3.803	ug/L	0.00
Spiked Amount	5.000	Range 65 - 130	Recovery	=	76.000%	
11) 1,1-Dichloroethene-d2	2.562	65	30882	4.888	ug/L	0.00
Spiked Amount	5.000	Range 60 - 125	Recovery	=	97.800%	
20) 2-Butanone-d5	4.620	46	239376	37.967	ug/L	0.00
Spiked Amount	50.000	Range 40 - 130	Recovery	=	75.940%	
24) Chloroform-d	5.060	84	162833	3.997	ug/L	0.00
Spiked Amount	5.000	Range 70 - 125	Recovery	=	80.000%	
26) 1,2-Dichloroethane-d4	5.700	65	84058	3.820	ug/L	0.00
Spiked Amount	5.000	Range 70 - 130	Recovery	=	76.400%	
32) Benzene-d6	5.726	84	328807	4.549	ug/L	0.00
Spiked Amount	5.000	Range 70 - 125	Recovery	=	91.000%	
36) 1,2-Dichloropropane-d6	6.687	67	108838	4.307	ug/L	0.00
Spiked Amount	5.000	Range 60 - 140	Recovery	=	86.200%	
41) Toluene-d8	7.896	98	300985	5.296	ug/L	0.00
Spiked Amount	5.000	Range 70 - 130	Recovery	=	106.000%	
43) trans-1,3-Dichloroprop...	8.176	79	37237	4.819	ug/L	0.00
Spiked Amount	5.000	Range 55 - 130	Recovery	=	96.400%	
46) 2-Hexanone-d5	8.629	63	207643	44.637	ug/L	0.00
Spiked Amount	50.000	Range 45 - 130	Recovery	=	89.280%	
56) 1,1,2,2-Tetrachloroeth...	10.755	84	102333	4.419	ug/L	0.00
Spiked Amount	5.000	Range 65 - 120	Recovery	=	88.400%	
66) 1,2-Dichlorobenzene-d4	12.192	152	107476	5.148	ug/L	0.00
Spiked Amount	5.000	Range 80 - 120	Recovery	=	103.000%	
Target Compounds						
2) Dichlorodifluoromethane	1.385	85	100839	3.989	ug/L	99
3) Chloromethane	1.527	50	116656	3.661	ug/L	99
5) Vinyl chloride	1.601	62	122610	4.017	ug/L	89
6) Bromomethane	1.848	94	93383	6.452	ug/L	96
8) Chloroethane	1.929	64	79499	4.289	ug/L	100
9) Trichlorofluoromethane	2.134	101	149648	4.466	ug/L	99
10) 1,1,2-Trichloro-1,2,2-...	2.578	101	92270	4.684	ug/L	98
12) 1,1-Dichloroethene	2.578	96	83067	4.134	ug/L	98
13) Acetone	2.623	43	164514	51.427	ug/L	100
14) Carbon disulfide	2.790	76	202926	3.133	ug/L	100
15) Methyl Acetate	2.945	43	43064	5.142	ug/L	97
16) Methylene chloride	3.041	84	120358	3.657	ug/L	98
17) Methyl tert-butyl Ether	3.363	73	227791	4.944	ug/L	99
18) trans-1,2-Dichloroethene	3.350	96	87735	4.068	ug/L	97
19) 1,1-Dichloroethane	3.867	63	185236	4.657	ug/L	100
21) 2-Butanone	4.697	43	285564	57.003	ug/L	97
22) cis-1,2-Dichloroethene	4.665	96	107176	4.491	ug/L	99
23) Bromochloromethane	4.973	128	51672	4.631	ug/L	96
25) Chloroform	5.086	83	198993	4.822	ug/L	97

Data Path : Z:\voasrv\HPCHEM1\MSVOA_U\Data\VU111122\
 Data File : VU051828.D
 Acq On : 11 Nov 2022 20:37
 Operator : JC/MD
 Sample : VSTDCCC005
 Misc : 25.0mL/MSVOA_U/WATER
 ALS Vial : 16 Sample Multiplier: 1

Instrument :
 MSVOA_U
 ClientSampleId :
 VSTD005199

Quant Time: Nov 12 01:25:52 2022
 Quant Method : Z:\voasrv\HPCHEM1\MSVOA_U\Method\SFAMUTR102822WMA.M
 Quant Title : TRACE VOA SFAM1.0
 QLast Update : Sat Nov 12 01:22:06 2022
 Response via : Initial Calibration

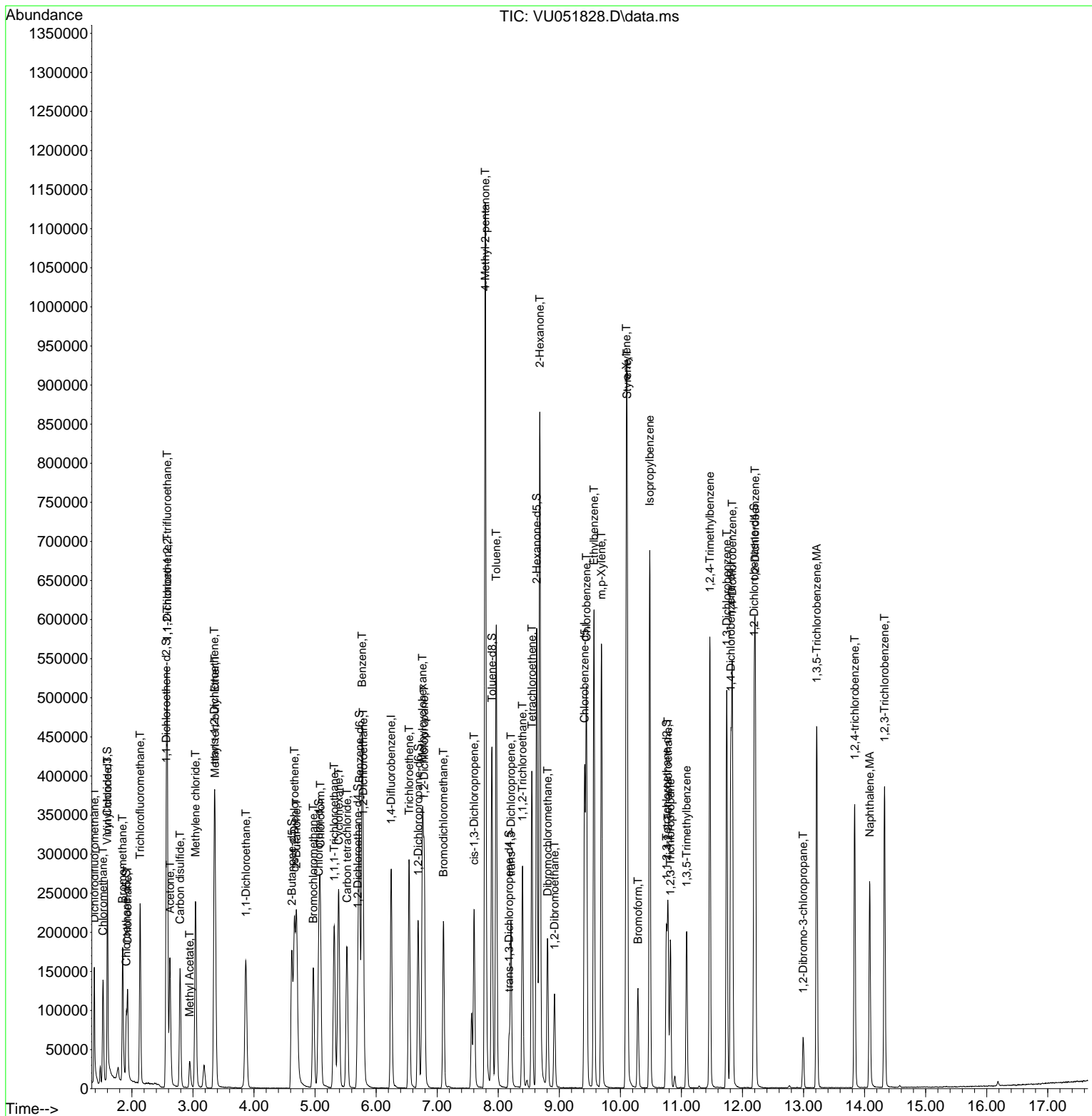
Compound	R.T.	QIon	Response	Conc	Units	Dev(Min)
27) 1,2-Dichloroethane	5.790	62	117805	4.639	ug/L	98
29) 1,1,1-Trichloroethane	5.314	97	150108	4.827	ug/L	100
30) Cyclohexane	5.385	56	118368	4.134	ug/L	100
31) Carbon tetrachloride	5.523	117	127318	4.787	ug/L	100
33) Benzene	5.771	78	408844	4.524	ug/L	100
34) Trichloroethene	6.539	95	102640	4.706	ug/L	98
35) Methylcyclohexane	6.761	83	129605	4.298	ug/L	99
37) 1,2-Dichloropropane	6.787	63	115320	4.961	ug/L	99
38) Bromodichloromethane	7.102	83	141940	4.999	ug/L	99
39) cis-1,3-Dichloropropene	7.604	75	139735	4.685	ug/L	100
40) 4-Methyl-2-pentanone	7.787	43	699282	59.973	ug/L	100
42) Toluene	7.967	91	448464	4.831	ug/L	98
44) trans-1,3-Dichloropropene	8.208	75	124172	4.982	ug/L	97
45) 1,1,2-Trichloroethane	8.398	97	88918	5.220	ug/L	97
47) Tetrachloroethene	8.552	164	92595	5.543	ug/L	96
48) 2-Hexanone	8.681	43	514659	59.631	ug/L	99
49) Dibromochloromethane	8.809	129	101025	5.191	ug/L	99
50) 1,2-Dibromoethane	8.922	107	78283	5.094	ug/L	90
51) Chlorobenzene	9.443	112	279351	4.782	ug/L	98
52) Ethylbenzene	9.568	91	427704	4.776	ug/L	100
53) m,p-Xylene	9.690	106	171545	4.931	ug/L	96
54) o-Xylene	10.099	106	167730	4.934	ug/L	97
55) Styrene	10.112	104	288323	5.073	ug/L	99
57) 1,1,2,2-Tetrachloroethane	10.780	83	118887	5.629	ug/L	98
59) Bromoform	10.288	173	58522	5.568	ug/L	98
60) Isopropylbenzene	10.481	105	438007	5.274	ug/L	100
61) 1,2,3-Trichloropropane	10.819	75	82650	5.619	ug/L	98
62) 1,3,5-Trimethylbenzene	11.086	105	108877	4.870	ug/L	99
63) 1,2,4-Trimethylbenzene	11.465	105	318291	4.938	ug/L	99
64) 1,3-Dichlorobenzene	11.742	146	217482	5.260	ug/L	99
65) 1,4-Dichlorobenzene	11.832	146	213860	5.159	ug/L	99
67) 1,2-Dichlorobenzene	12.208	146	210121	5.218	ug/L	99
68) 1,2-Dibromo-3-chloropr...	12.992	75	16613	5.485	ug/L	94
69) 1,3,5-Trichlorobenzene	13.218	180	146759	4.980	ug/L	100
70) 1,2,4-trichlorobenzene	13.838	180	116103	5.132	ug/L	99
71) Naphthalene	14.082	128	220066	5.211	ug/L	99
72) 1,2,3-Trichlorobenzene	14.327	180	119762	5.242	ug/L	99

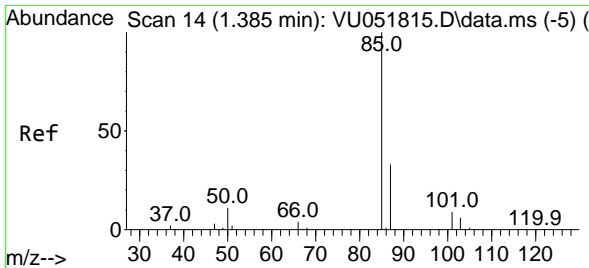
(#) = qualifier out of range (m) = manual integration (+) = signals summed

Data Path : Z:\voasrv\HPCHEM1\MSVOA_U\Data\VU111122\
 Data File : VU051828.D
 Acq On : 11 Nov 2022 20:37
 Operator : JC/MD
 Sample : VSTDCCC005
 Misc : 25.0mL/MSVOA_U/WATER
 ALS Vial : 16 Sample Multiplier: 1

Instrument :
 MSVOA_U
 ClientSampleId :
 VSTD005199

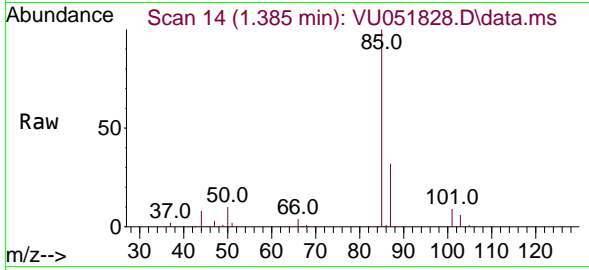
Quant Time: Nov 12 01:25:52 2022
 Quant Method : Z:\voasrv\HPCHEM1\MSVOA_U\Method\SFAMUTR102822WMA.M
 Quant Title : TRACE VOA SFAM1.0
 QLast Update : Sat Nov 12 01:22:06 2022
 Response via : Initial Calibration



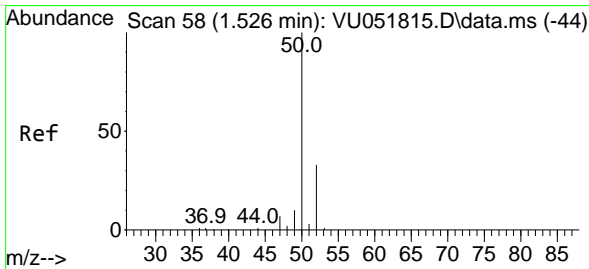
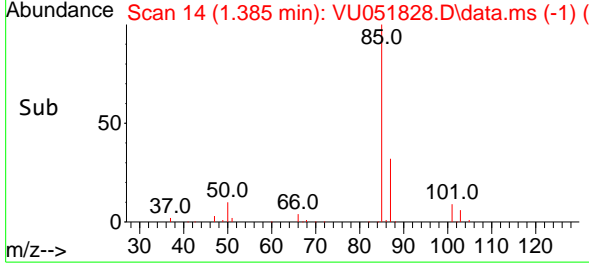
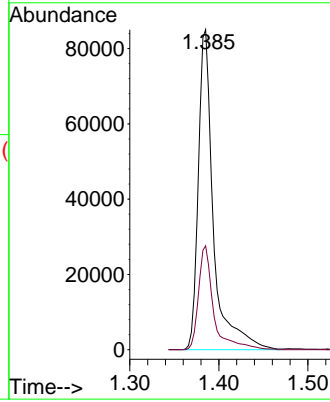


#2
 Dichlorodifluoromethane
 Concen: 3.989 ug/L
 RT: 1.385 min Scan# 14
 Delta R.T. 0.000 min
 Lab File: VU051828.D
 Acq: 11 Nov 2022 20:37

Instrument :
 MSVOA_U
 ClientSampleId :
 VSTD005199

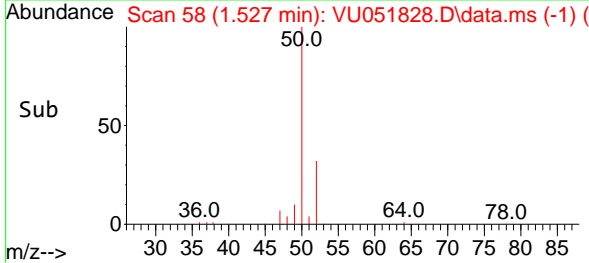
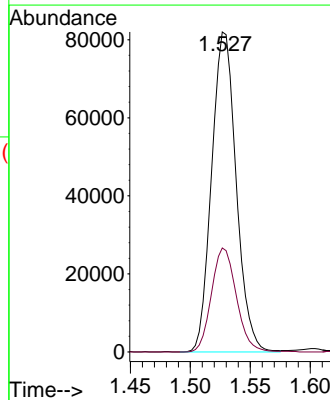
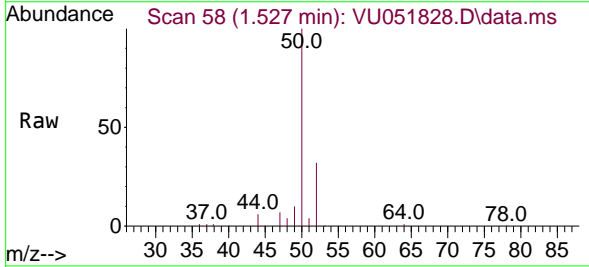


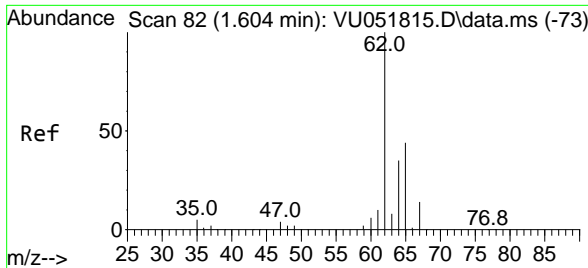
Tgt Ion: 85 Resp: 100839
 Ion Ratio Lower Upper
 85 100
 87 32.4 25.7 38.5



#3
 Chloromethane
 Concen: 3.661 ug/L
 RT: 1.527 min Scan# 58
 Delta R.T. 0.000 min
 Lab File: VU051828.D
 Acq: 11 Nov 2022 20:37

Tgt Ion: 50 Resp: 116656
 Ion Ratio Lower Upper
 50 100
 52 32.5 23.2 43.2

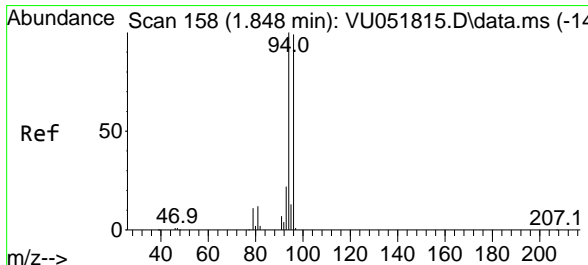
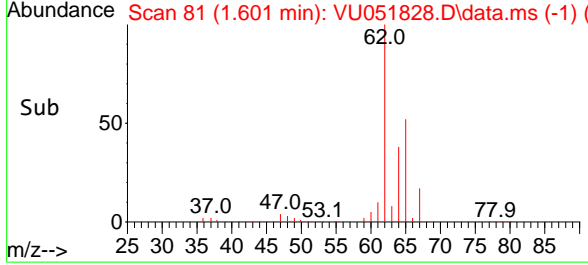
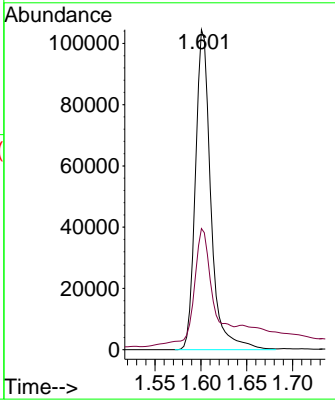
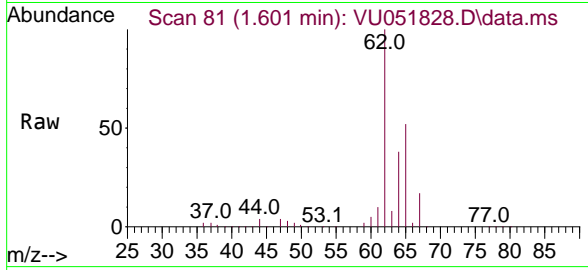




#5
 Vinyl chloride
 Concen: 4.017 ug/L
 RT: 1.601 min Scan# 81
 Delta R.T. -0.003 min
 Lab File: VU051828.D
 Acq: 11 Nov 2022 20:37

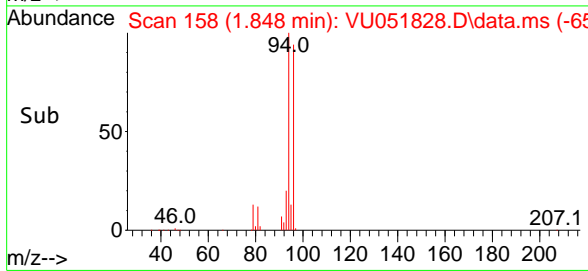
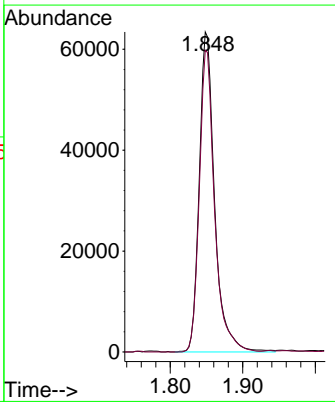
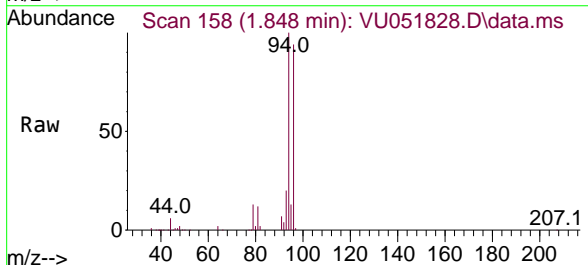
Instrument : MSVOA_U
 ClientSampleId : VSTD005199

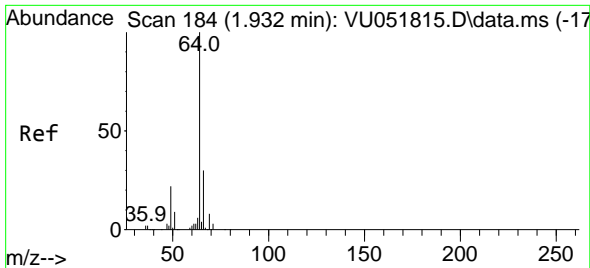
Tgt Ion: 62 Resp: 122610
 Ion Ratio Lower Upper
 62 100
 64 37.9 22.1 41.1



#6
 Bromomethane
 Concen: 6.452 ug/L
 RT: 1.848 min Scan# 158
 Delta R.T. 0.000 min
 Lab File: VU051828.D
 Acq: 11 Nov 2022 20:37

Tgt Ion: 94 Resp: 93383
 Ion Ratio Lower Upper
 94 100
 96 94.2 63.2 117.4

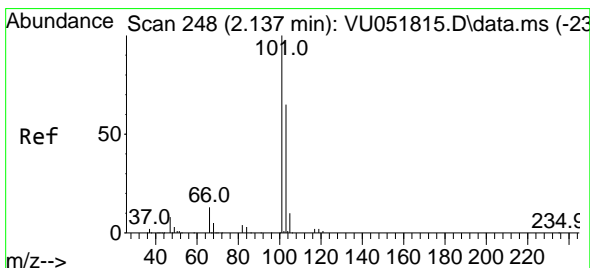
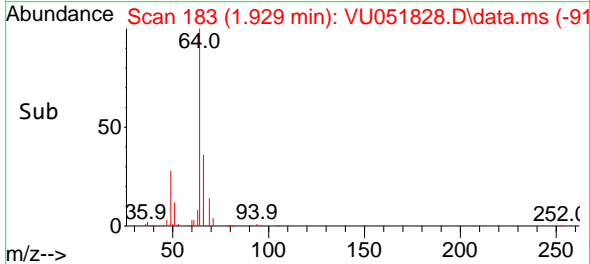
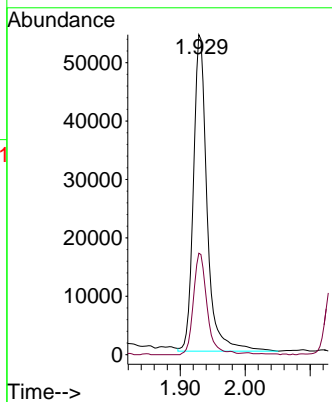
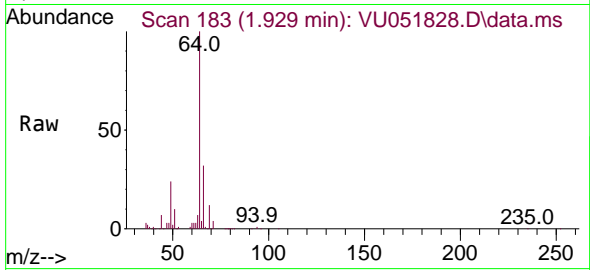




#8
 Chloroethane
 Concen: 4.289 ug/L
 RT: 1.929 min Scan# 183
 Delta R.T. -0.003 min
 Lab File: VU051828.D
 Acq: 11 Nov 2022 20:37

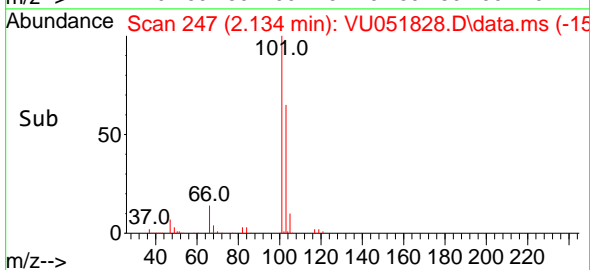
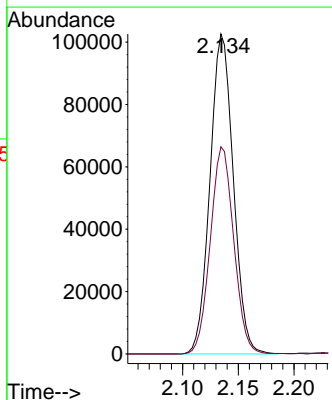
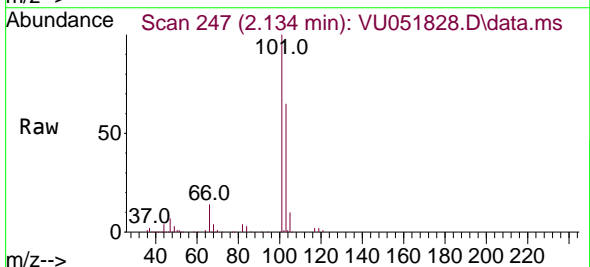
Instrument : MSVOA_U
 ClientSampleId : VSTD005199

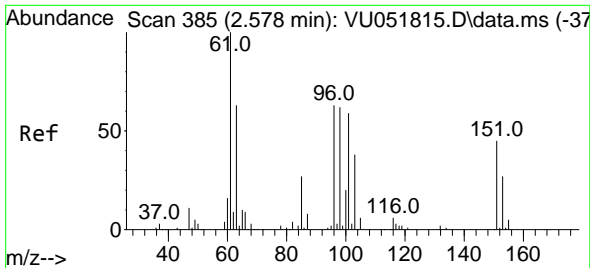
Tgt Ion: 64 Resp: 79499
 Ion Ratio Lower Upper
 64 100
 66 31.7 22.3 41.5



#9
 Trichlorofluoromethane
 Concen: 4.466 ug/L
 RT: 2.134 min Scan# 247
 Delta R.T. -0.003 min
 Lab File: VU051828.D
 Acq: 11 Nov 2022 20:37

Tgt Ion: 101 Resp: 149648
 Ion Ratio Lower Upper
 101 100
 103 65.2 51.8 77.6



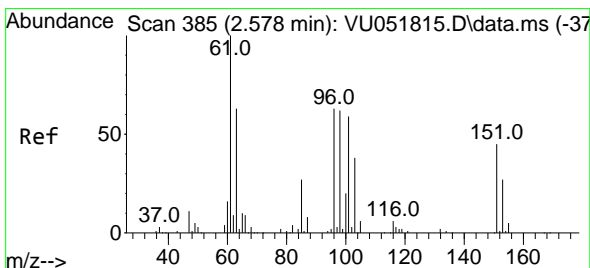
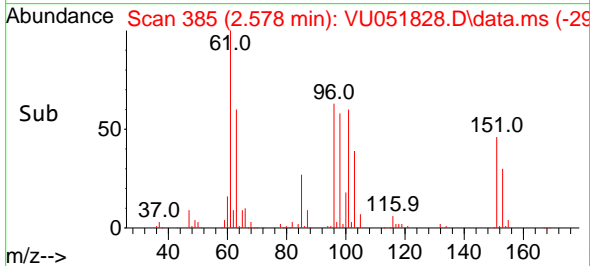
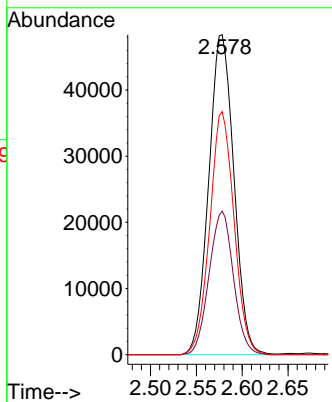
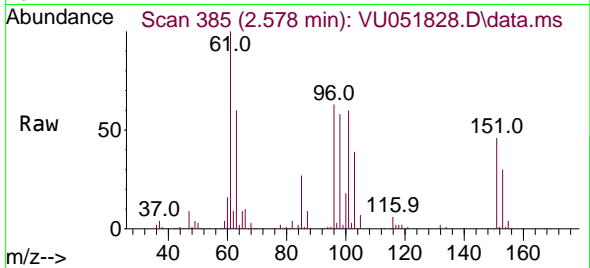


#10
 1,1,2-Trichloro-1,2,2-trifluoroethane
 Concen: 4.684 ug/L
 RT: 2.578 min Scan# 385
 Delta R.T. 0.000 min
 Lab File: VU051828.D
 Acq: 11 Nov 2022 20:37

Instrument :
 MSVOA_U
 ClientSampleId :
 VSTD005199

Tgt Ion:101 Resp: 92270

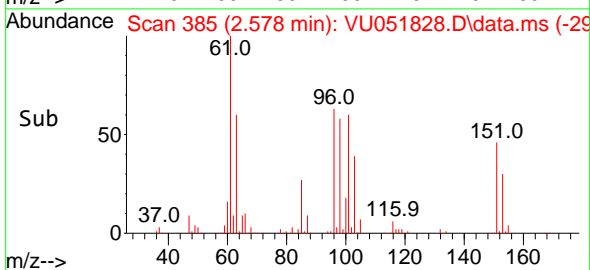
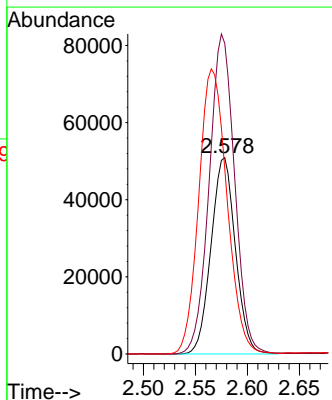
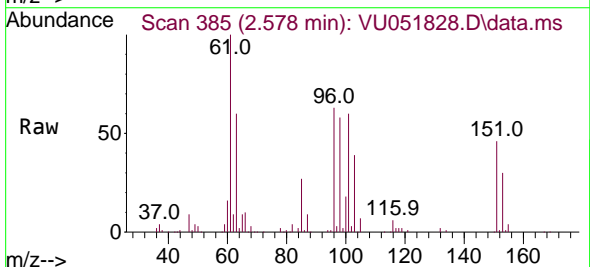
Ion	Ratio	Lower	Upper
101	100		
85	43.4	35.6	53.4
151	73.3	59.6	89.4

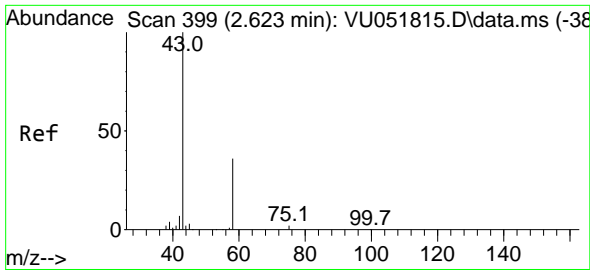


#12
 1,1-Dichloroethene
 Concen: 4.134 ug/L
 RT: 2.578 min Scan# 385
 Delta R.T. 0.000 min
 Lab File: VU051828.D
 Acq: 11 Nov 2022 20:37

Tgt Ion: 96 Resp: 83067

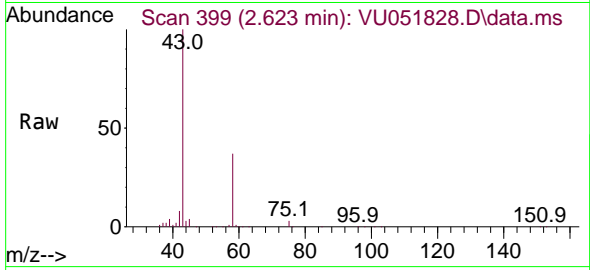
Ion	Ratio	Lower	Upper
96	100		
61	158.1	108.8	202.0
63	94.5	64.9	120.5



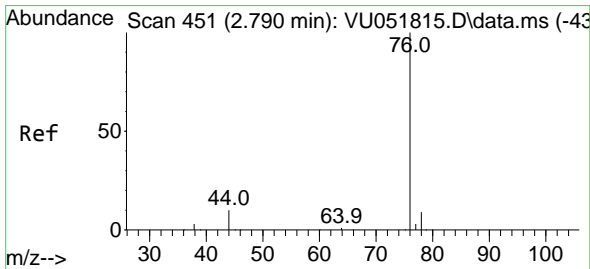
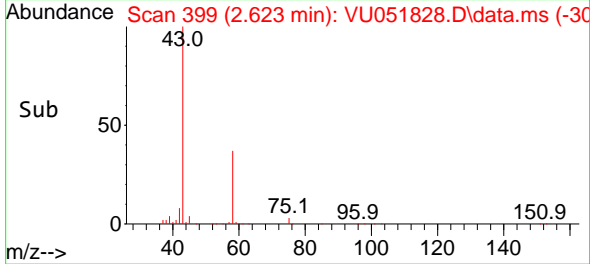
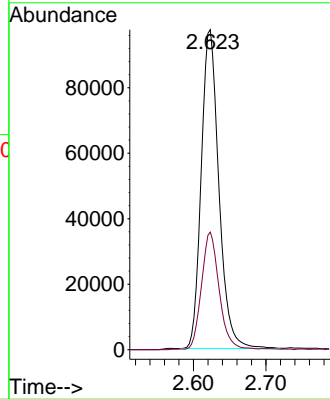


#13
 Acetone
 Concen: 51.427 ug/L
 RT: 2.623 min Scan# 399
 Delta R.T. 0.000 min
 Lab File: VU051828.D
 Acq: 11 Nov 2022 20:37

Instrument :
 MSVOA_U
 ClientSampleId :
 VSTD005199

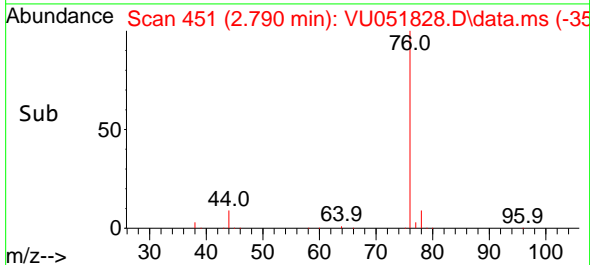
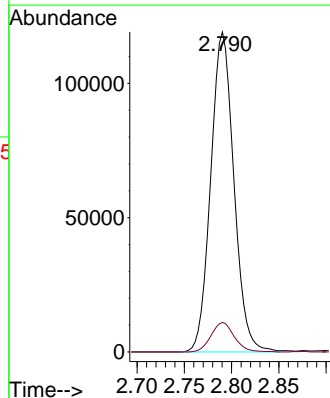
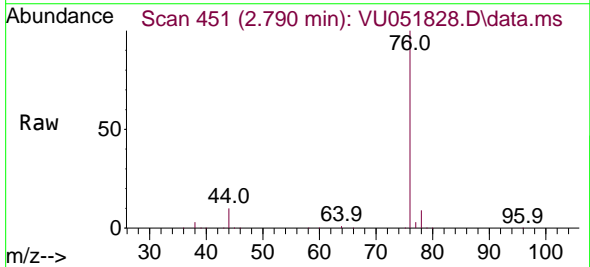


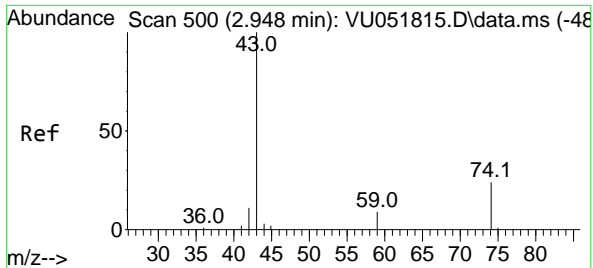
Tgt Ion: 43 Resp: 164514
 Ion Ratio Lower Upper
 43 100
 58 37.1 0.0 73.8



#14
 Carbon disulfide
 Concen: 3.133 ug/L
 RT: 2.790 min Scan# 451
 Delta R.T. 0.000 min
 Lab File: VU051828.D
 Acq: 11 Nov 2022 20:37

Tgt Ion: 76 Resp: 202926
 Ion Ratio Lower Upper
 76 100
 78 9.2 7.4 11.2

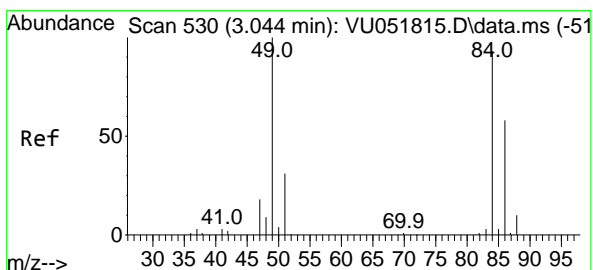
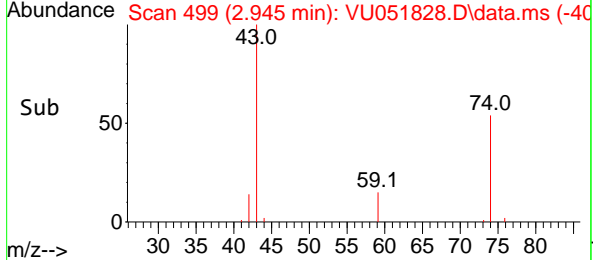
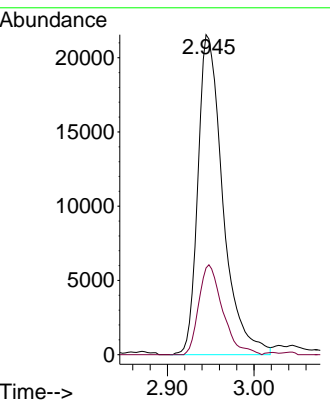
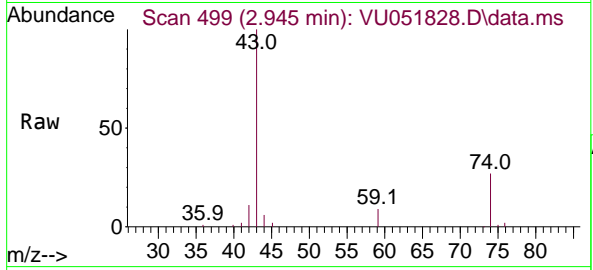




#15
 Methyl Acetate
 Concen: 5.142 ug/L
 RT: 2.945 min Scan# 499
 Delta R.T. -0.003 min
 Lab File: VU051828.D
 Acq: 11 Nov 2022 20:37

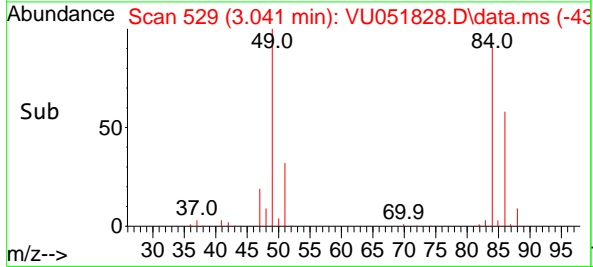
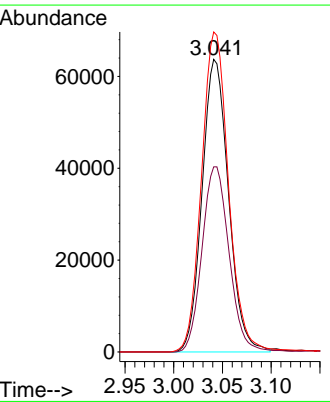
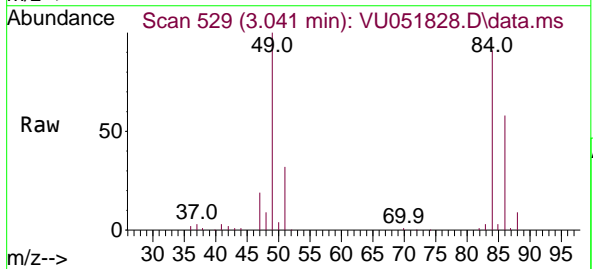
Instrument : MSVOA_U
 ClientSampleId : VSTD005199

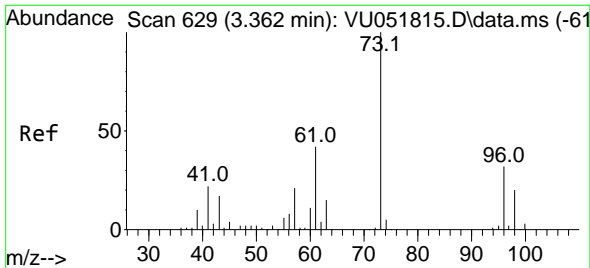
Tgt Ion: 43 Resp: 43064
 Ion Ratio Lower Upper
 43 100
 74 26.8 20.2 30.4



#16
 Methylene chloride
 Concen: 3.657 ug/L
 RT: 3.041 min Scan# 529
 Delta R.T. -0.003 min
 Lab File: VU051828.D
 Acq: 11 Nov 2022 20:37

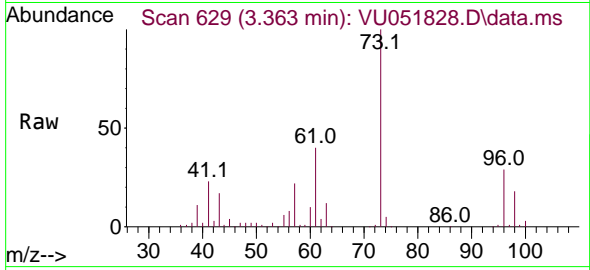
Tgt Ion: 84 Resp: 120358
 Ion Ratio Lower Upper
 84 100
 86 63.3 46.3 85.9
 49 109.4 76.0 141.2



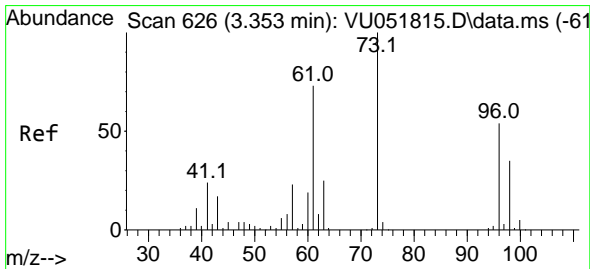
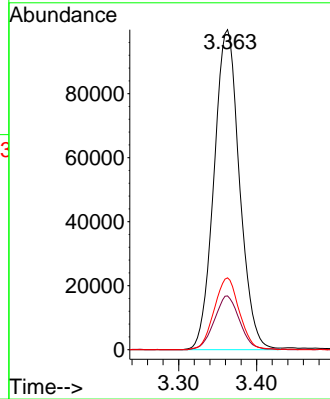
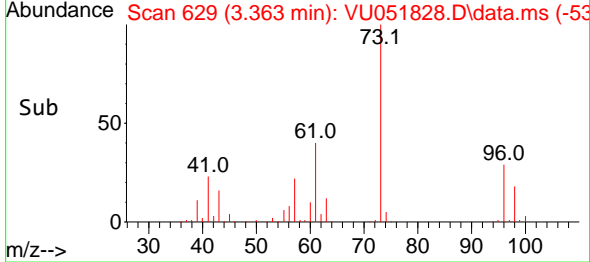


#17
 Methyl tert-butyl Ether
 Concen: 4.944 ug/L
 RT: 3.363 min Scan# 61
 Delta R.T. 0.000 min
 Lab File: VU051828.D
 Acq: 11 Nov 2022 20:37

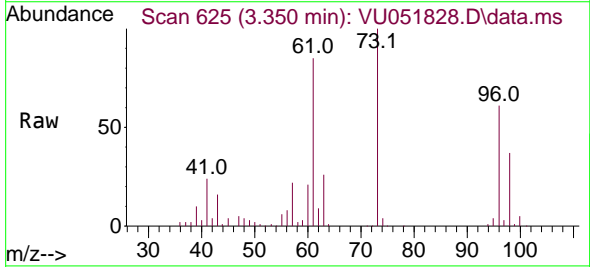
Instrument :
 MSVOA_U
 ClientSampleId :
 VSTD005199



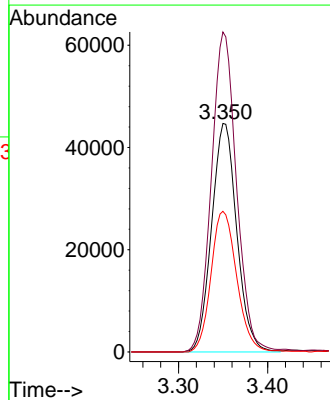
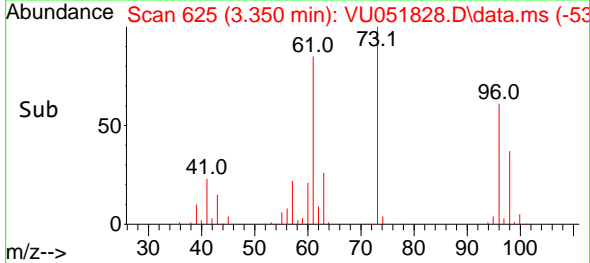
Tgt Ion: 73 Resp: 227791
 Ion Ratio Lower Upper
 73 100
 43 16.6 13.6 20.4
 57 22.1 17.5 26.3

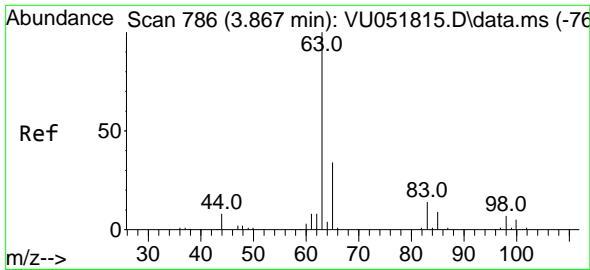


#18
 trans-1,2-Dichloroethene
 Concen: 4.068 ug/L
 RT: 3.350 min Scan# 625
 Delta R.T. -0.003 min
 Lab File: VU051828.D
 Acq: 11 Nov 2022 20:37



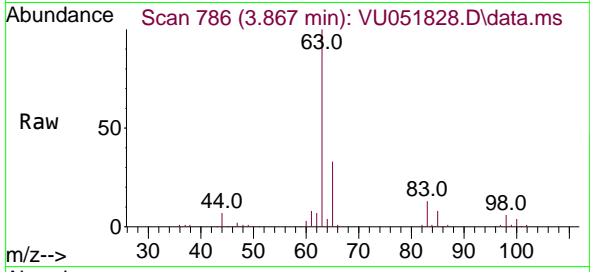
Tgt Ion: 96 Resp: 87735
 Ion Ratio Lower Upper
 96 100
 61 140.0 94.7 175.9
 98 61.6 44.2 82.0



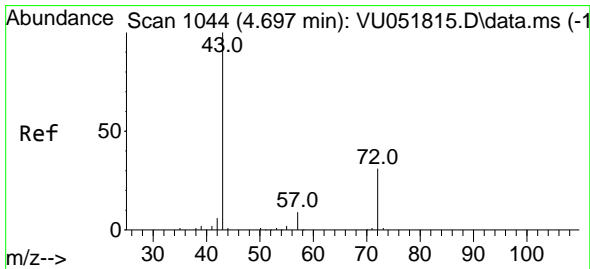
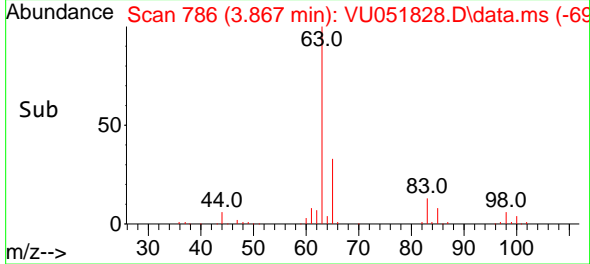
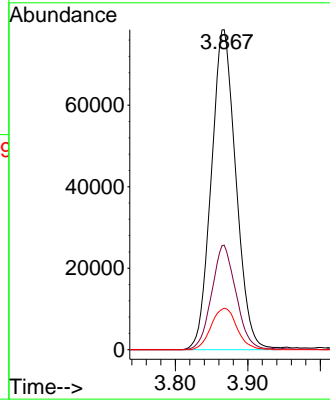


#19
 1,1-Dichloroethane
 Concen: 4.657 ug/L
 RT: 3.867 min Scan# 786
 Delta R.T. 0.000 min
 Lab File: VU051828.D
 Acq: 11 Nov 2022 20:37

Instrument : MSVOA_U
 ClientSampleId : VSTD005199

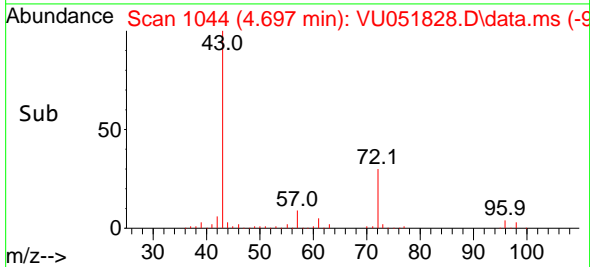
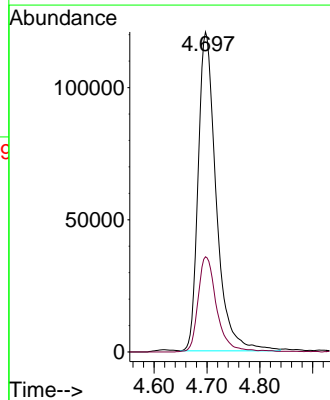
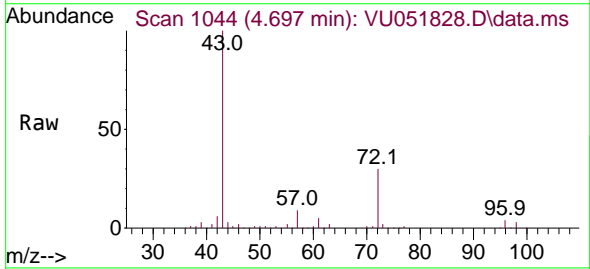


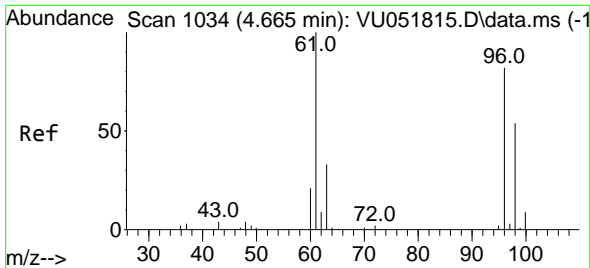
Tgt Ion: 63 Resp: 185236
 Ion Ratio Lower Upper
 63 100
 65 32.7 22.7 42.1
 83 12.9 9.2 17.0



#21
 2-Butanone
 Concen: 57.003 ug/L
 RT: 4.697 min Scan# 1044
 Delta R.T. 0.000 min
 Lab File: VU051828.D
 Acq: 11 Nov 2022 20:37

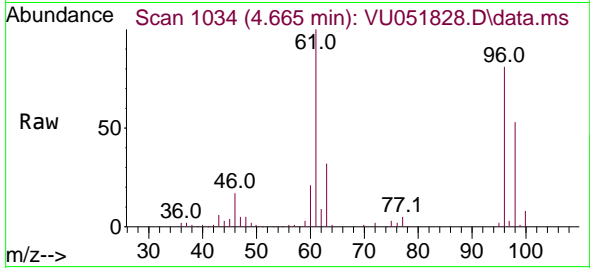
Tgt Ion: 43 Resp: 285564
 Ion Ratio Lower Upper
 43 100
 72 30.7 16.2 48.5





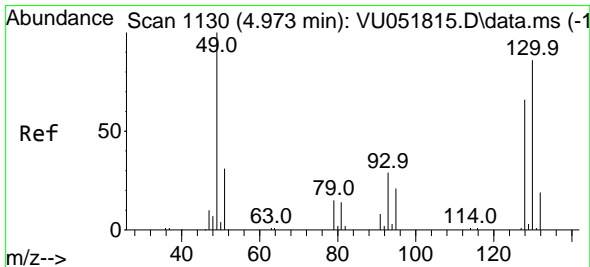
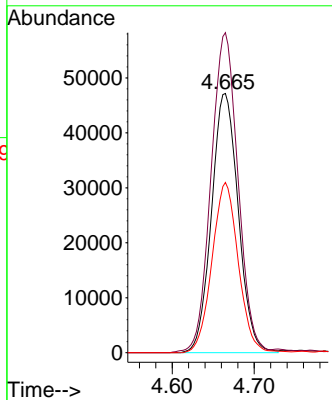
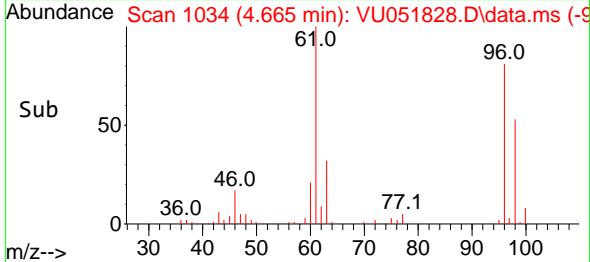
#22
 cis-1,2-Dichloroethene
 Concen: 4.491 ug/L
 RT: 4.665 min Scan# 1034
 Delta R.T. 0.000 min
 Lab File: VU051828.D
 Acq: 11 Nov 2022 20:37

Instrument : MSVOA_U
 ClientSampleId : VSTD005199

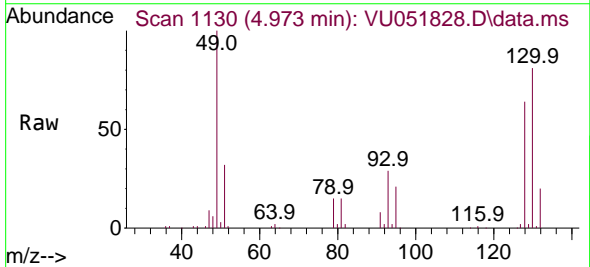


Tgt Ion: 96 Resp: 107176

Ion	Ratio	Lower	Upper
96	100		
61	123.5	86.4	160.4
98	65.7	44.2	82.2

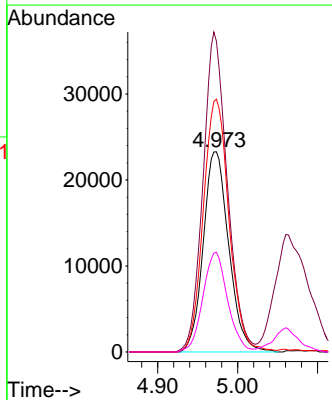
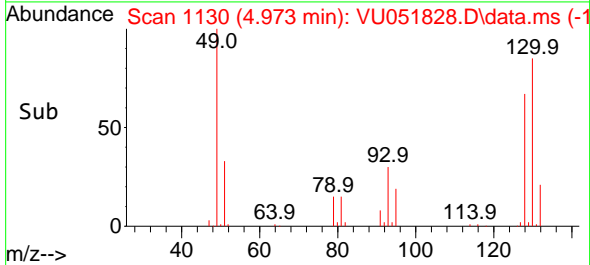


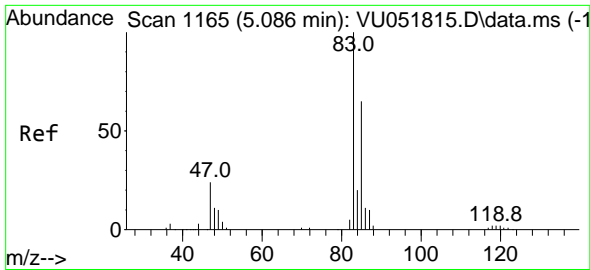
#23
 Bromochloromethane
 Concen: 4.631 ug/L
 RT: 4.973 min Scan# 1130
 Delta R.T. 0.000 min
 Lab File: VU051828.D
 Acq: 11 Nov 2022 20:37



Tgt Ion: 128 Resp: 51672

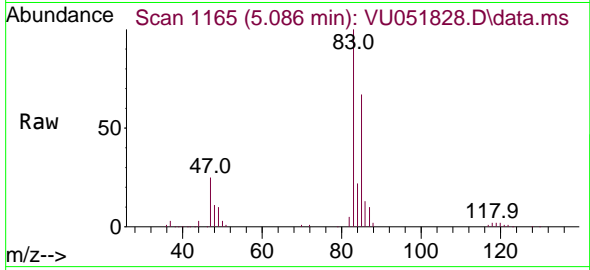
Ion	Ratio	Lower	Upper
128	100		
49	155.2	105.5	195.9
130	126.3	93.5	173.7
51	49.8	40.1	60.1



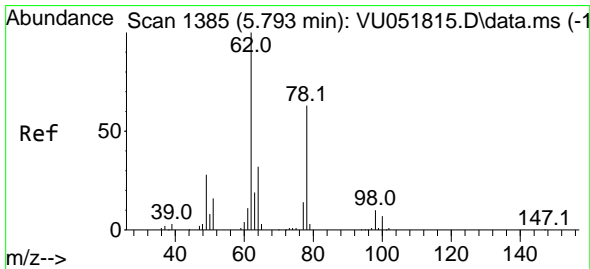
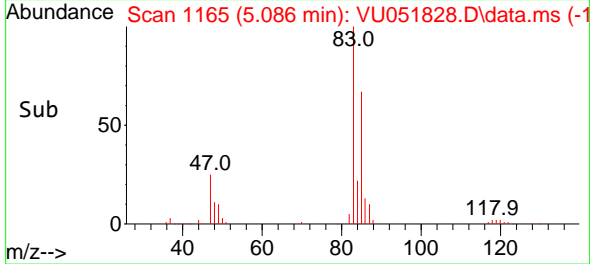
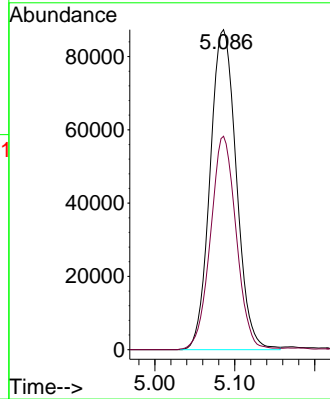


#25
 Chloroform
 Concen: 4.822 ug/L
 RT: 5.086 min Scan# 1165
 Delta R.T. 0.000 min
 Lab File: VU051828.D
 Acq: 11 Nov 2022 20:37

Instrument : MSVOA_U
 ClientSampleId : VSTD005199

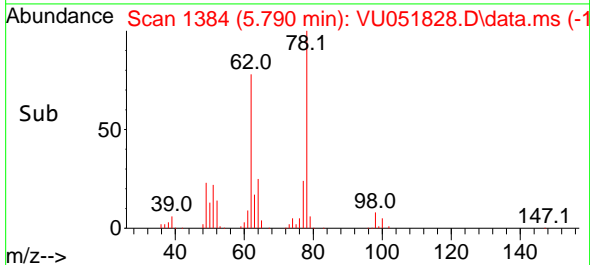
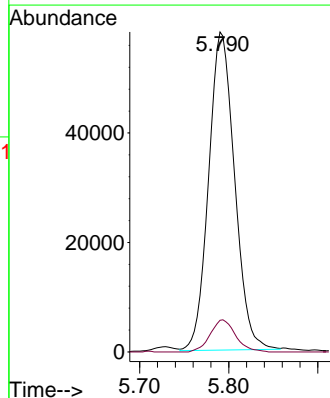
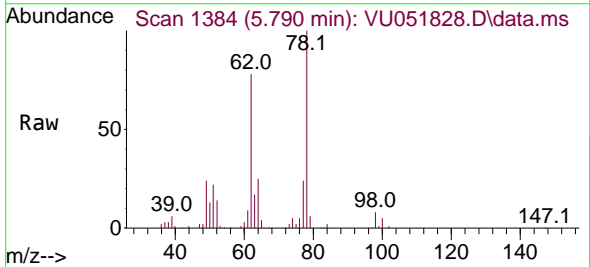


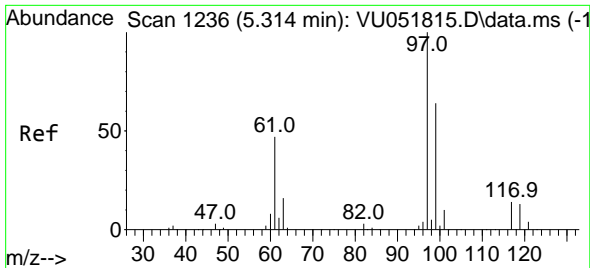
Tgt Ion: 83 Resp: 198993
 Ion Ratio Lower Upper
 83 100
 85 66.7 45.2 84.0



#27
 1,2-Dichloroethane
 Concen: 4.639 ug/L
 RT: 5.790 min Scan# 1384
 Delta R.T. -0.003 min
 Lab File: VU051828.D
 Acq: 11 Nov 2022 20:37

Tgt Ion: 62 Resp: 117805
 Ion Ratio Lower Upper
 62 100
 98 9.9 7.4 11.0





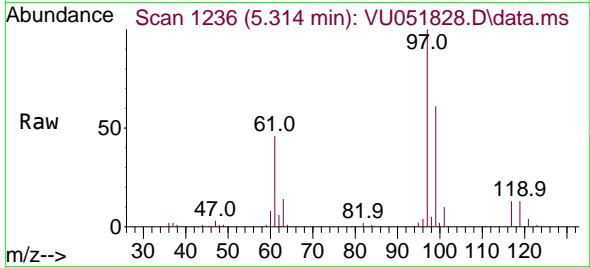
#29
 1,1,1-Trichloroethane
 Concen: 4.827 ug/L
 RT: 5.314 min Scan# 11
 Delta R.T. 0.000 min
 Lab File: VU051828.D
 Acq: 11 Nov 2022 20:37

Instrument :

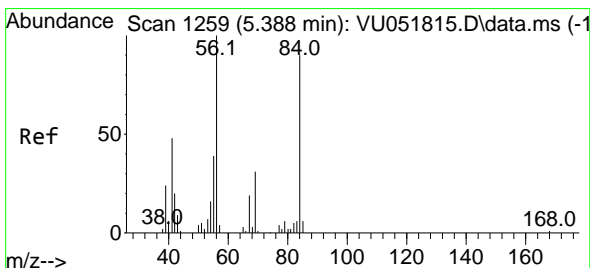
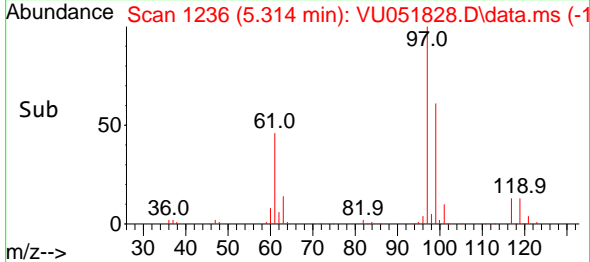
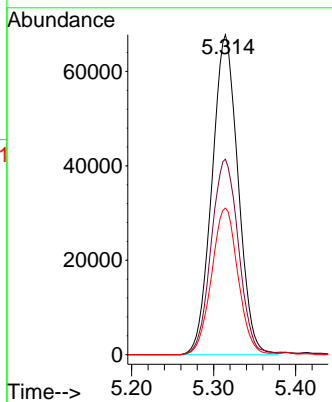
MSVOA_U

ClientSampleId :

VSTD005199

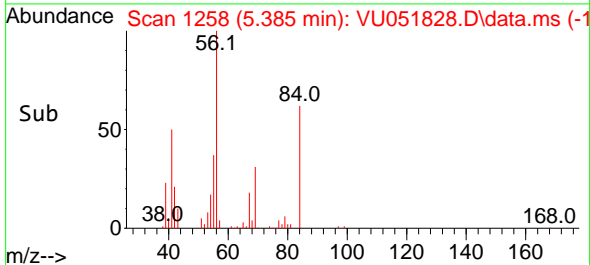
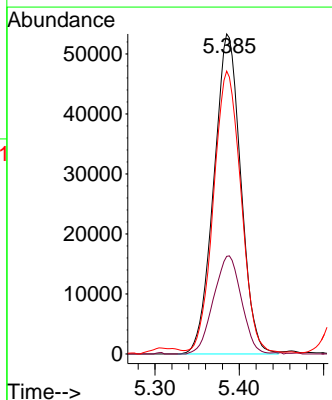
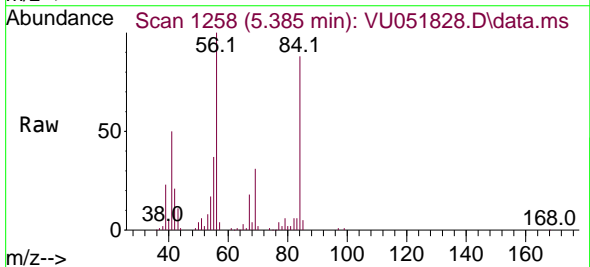


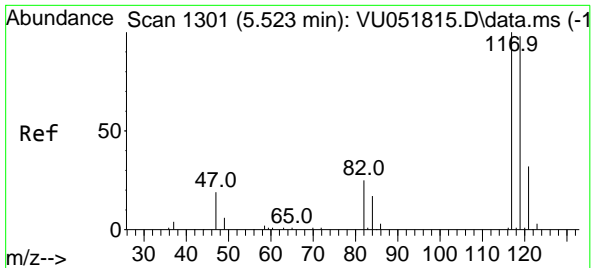
Tgt Ion: 97 Resp: 150108
 Ion Ratio Lower Upper
 97 100
 99 63.9 51.1 76.7
 61 46.4 37.4 56.0



#30
 Cyclohexane
 Concen: 4.134 ug/L
 RT: 5.385 min Scan# 1258
 Delta R.T. -0.003 min
 Lab File: VU051828.D
 Acq: 11 Nov 2022 20:37

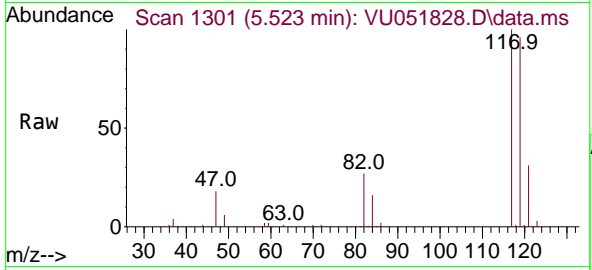
Tgt Ion: 56 Resp: 118368
 Ion Ratio Lower Upper
 56 100
 69 31.7 25.4 38.0
 84 89.6 71.4 107.0



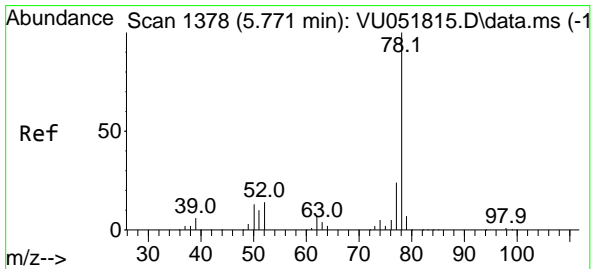
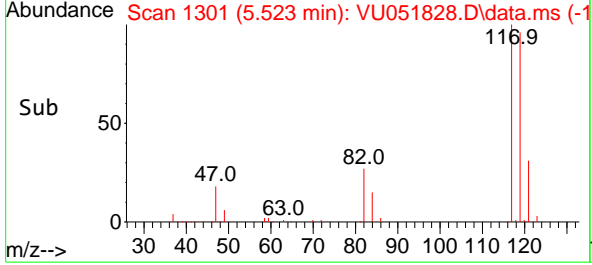
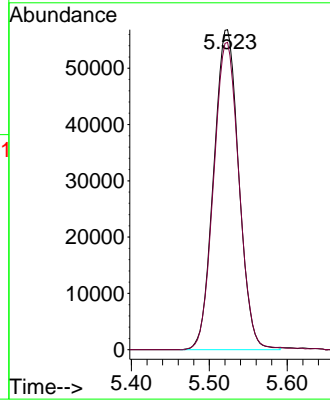


#31
 Carbon tetrachloride
 Concen: 4.787 ug/L
 RT: 5.523 min Scan# 1117
 Delta R.T. 0.000 min
 Lab File: VU051828.D
 Acq: 11 Nov 2022 20:37

Instrument : MSVOA_U
 ClientSampleId : VSTD005199

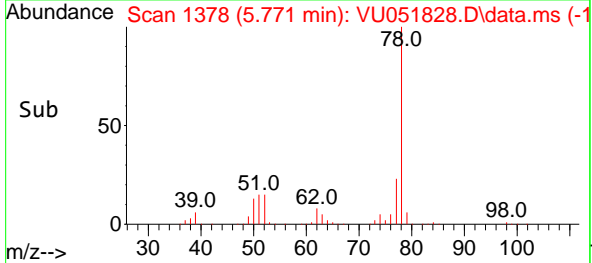
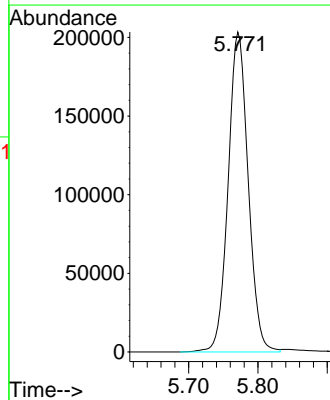
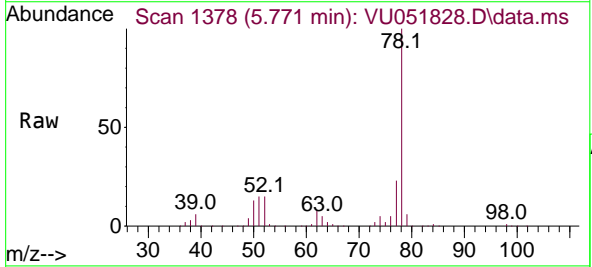


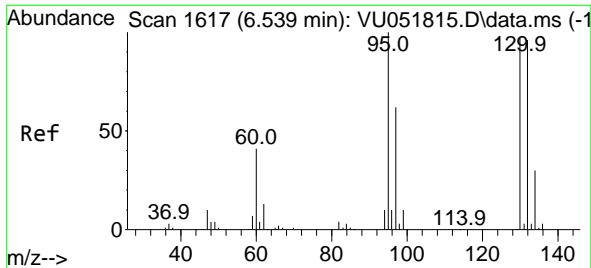
Tgt Ion: 117 Resp: 127318
 Ion Ratio Lower Upper
 117 100
 119 97.2 77.5 116.3



#33
 Benzene
 Concen: 4.524 ug/L
 RT: 5.771 min Scan# 1378
 Delta R.T. 0.000 min
 Lab File: VU051828.D
 Acq: 11 Nov 2022 20:37

Tgt Ion: 78 Resp: 408844



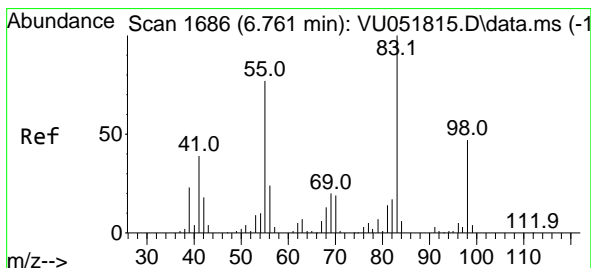
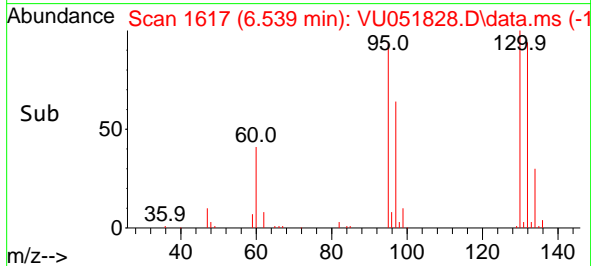
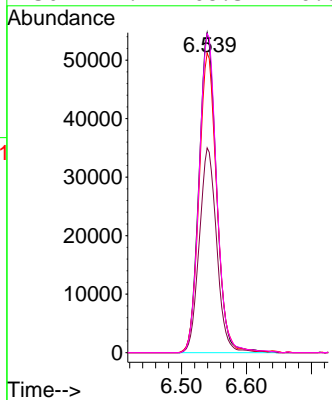
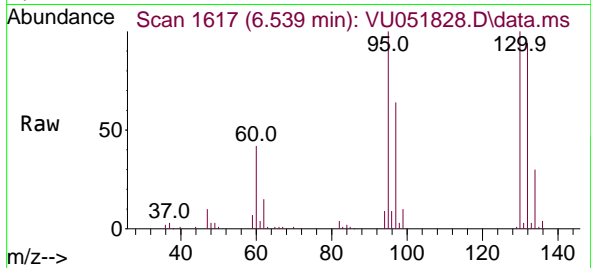


#34
 Trichloroethene
 Concen: 4.706 ug/L
 RT: 6.539 min Scan# 1617
 Delta R.T. 0.000 min
 Lab File: VU051828.D
 Acq: 11 Nov 2022 20:37

Instrument : MSVOA_U
 ClientSampleId : VSTD005199

Tgt Ion: 95 Resp: 102640

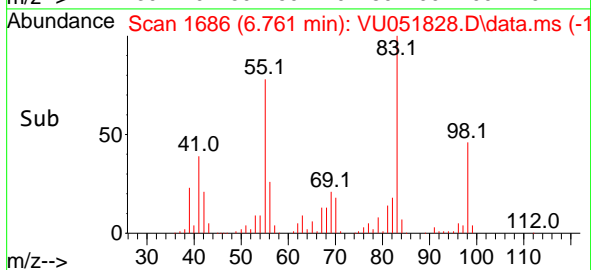
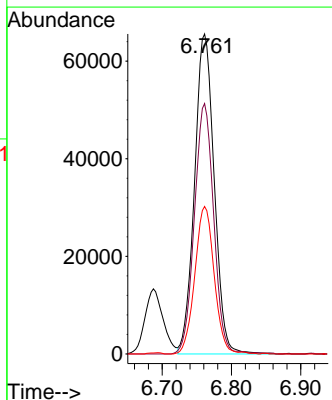
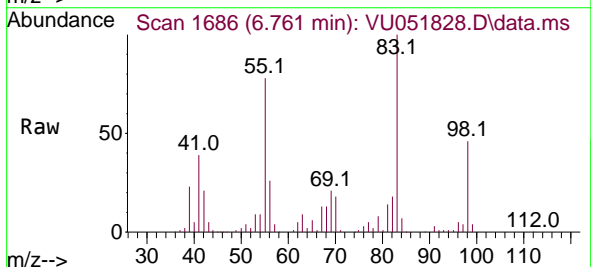
Ion	Ratio	Lower	Upper
95	100		
97	64.0	45.2	84.0
132	93.7	66.5	123.5
130	99.7	68.3	126.8

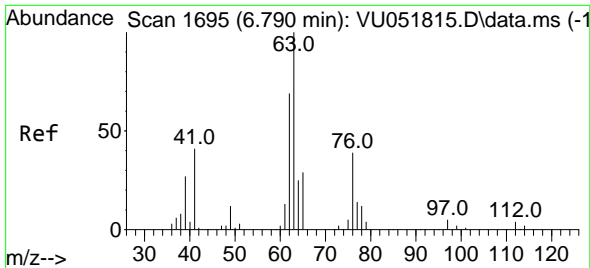


#35
 Methylcyclohexane
 Concen: 4.298 ug/L
 RT: 6.761 min Scan# 1686
 Delta R.T. 0.000 min
 Lab File: VU051828.D
 Acq: 11 Nov 2022 20:37

Tgt Ion: 83 Resp: 129605

Ion	Ratio	Lower	Upper
83	100		
55	76.7	60.6	90.8
98	45.1	35.8	53.6

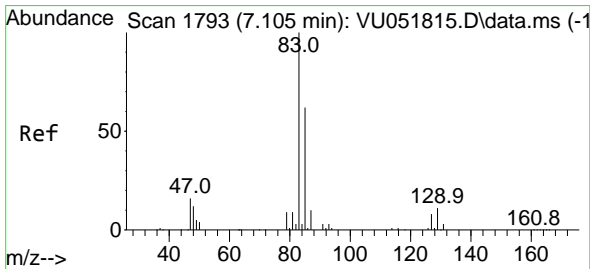
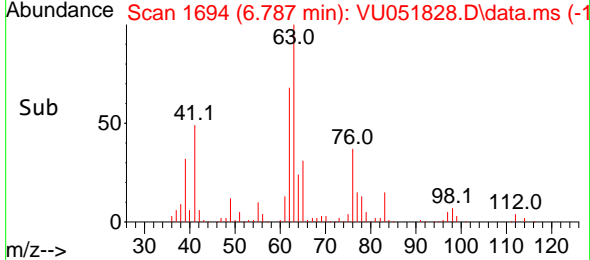
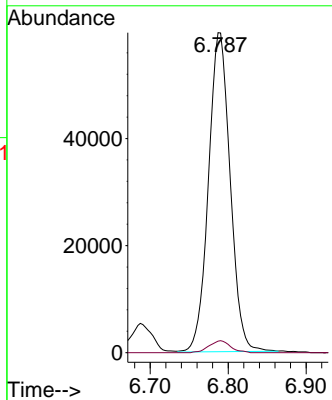
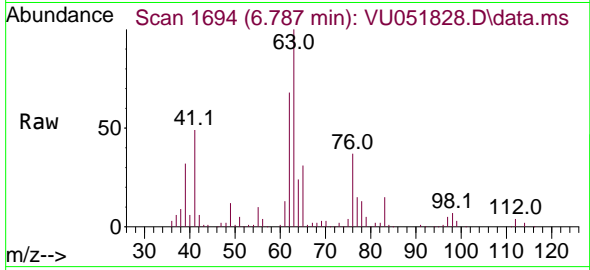




#37
 1,2-Dichloropropane
 Concen: 4.961 ug/L
 RT: 6.787 min Scan# 1694
 Delta R.T. -0.003 min
 Lab File: VU051828.D
 Acq: 11 Nov 2022 20:37

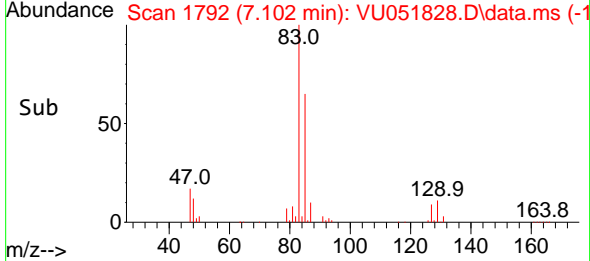
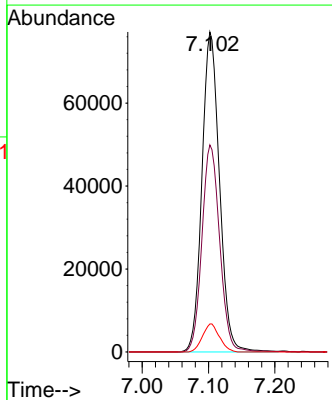
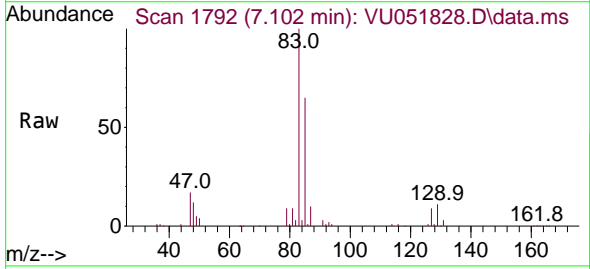
Instrument : MSVOA_U
 ClientSampleId : VSTD005199

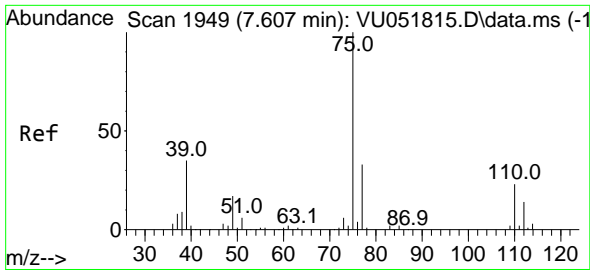
Tgt Ion: 63 Resp: 115320
 Ion Ratio Lower Upper
 63 100
 112 3.7 3.3 4.9



#38
 Bromodichloromethane
 Concen: 4.999 ug/L
 RT: 7.102 min Scan# 1792
 Delta R.T. -0.003 min
 Lab File: VU051828.D
 Acq: 11 Nov 2022 20:37

Tgt Ion: 83 Resp: 141940
 Ion Ratio Lower Upper
 83 100
 85 64.7 45.1 83.7
 127 8.7 6.6 9.8

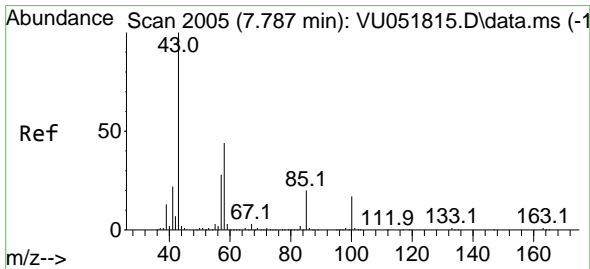
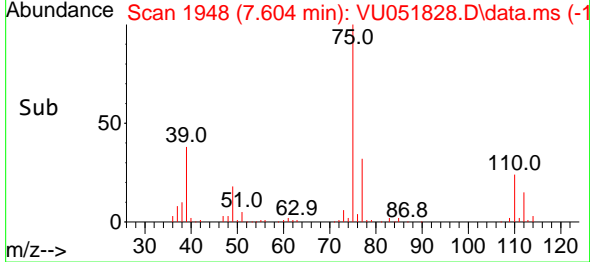
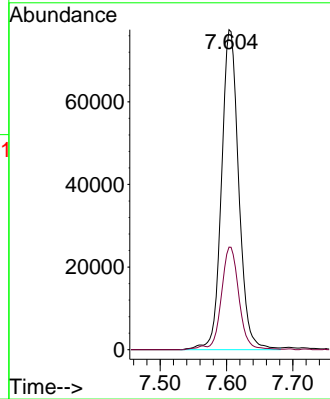
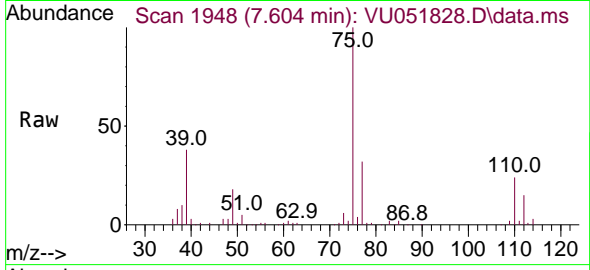




#39
 cis-1,3-Dichloropropene
 Concen: 4.685 ug/L
 RT: 7.604 min Scan# 1949
 Delta R.T. -0.003 min
 Lab File: VU051828.D
 Acq: 11 Nov 2022 20:37

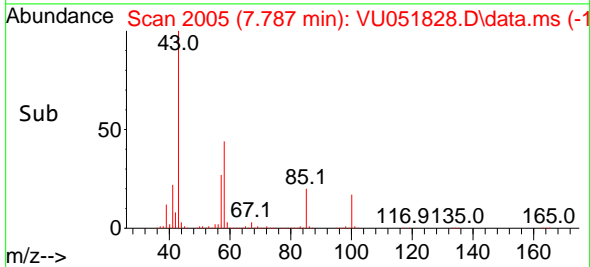
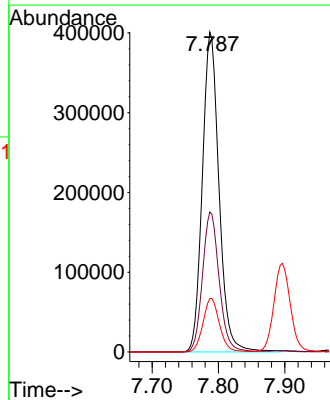
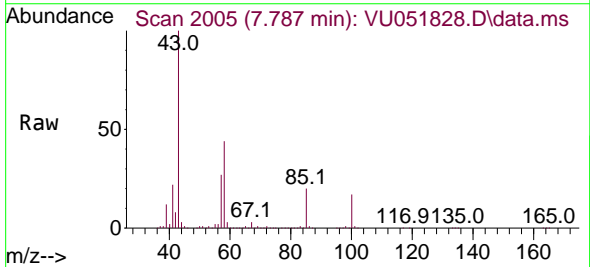
Instrument : MSVOA_U
 ClientSampleId : VSTD005199

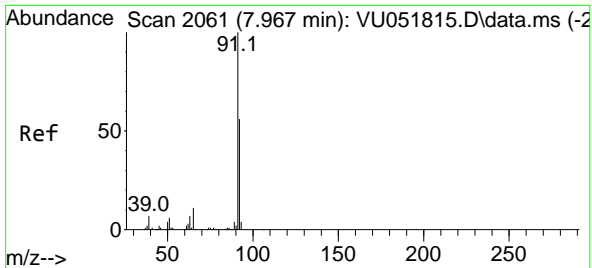
Tgt Ion: 75 Resp: 139735
 Ion Ratio Lower Upper
 75 100
 77 32.1 22.5 41.9



#40
 4-Methyl-2-pentanone
 Concen: 59.973 ug/L
 RT: 7.787 min Scan# 2005
 Delta R.T. 0.000 min
 Lab File: VU051828.D
 Acq: 11 Nov 2022 20:37

Tgt Ion: 43 Resp: 699282
 Ion Ratio Lower Upper
 43 100
 58 43.9 35.0 52.6
 100 16.6 13.4 20.0

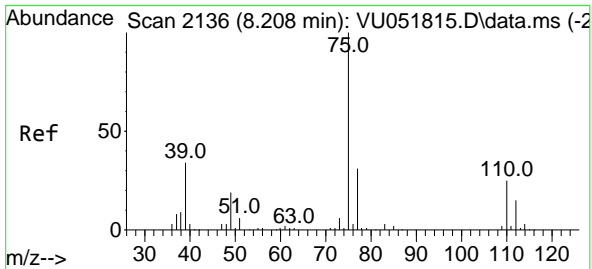
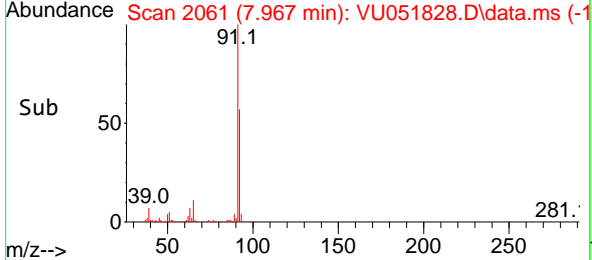
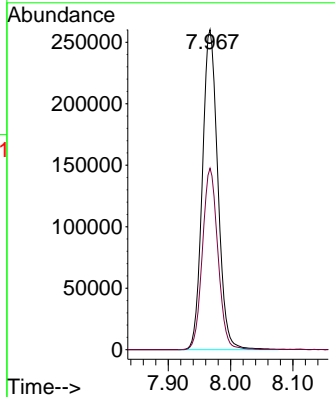
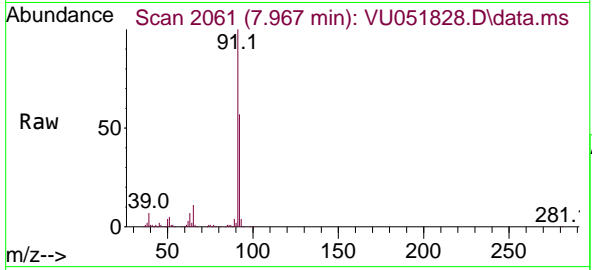




#42
 Toluene
 Concen: 4.831 ug/L
 RT: 7.967 min Scan# 2061
 Delta R.T. 0.000 min
 Lab File: VU051828.D
 Acq: 11 Nov 2022 20:37

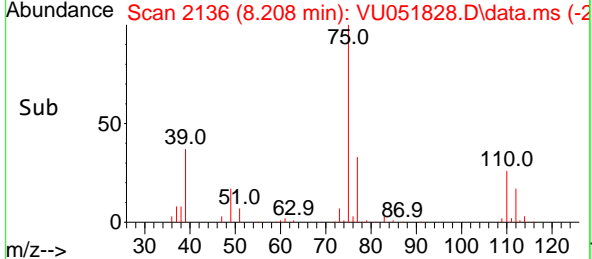
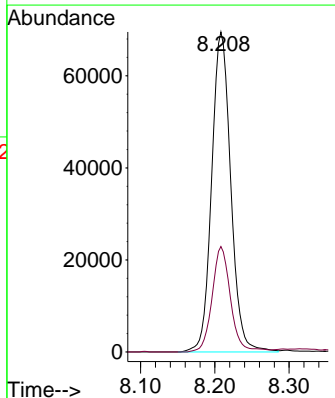
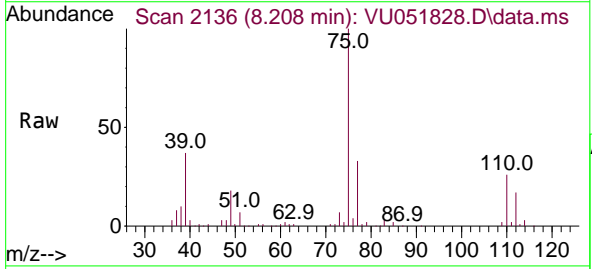
Instrument : MSVOA_U
 ClientSampleId : VSTD005199

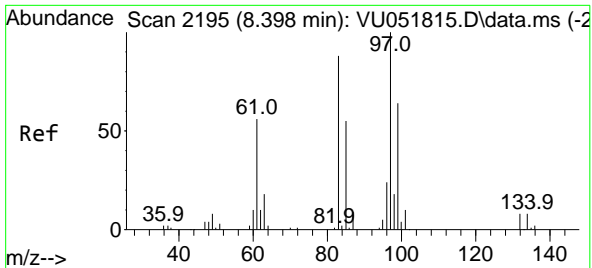
Tgt Ion: 91 Resp: 448464
 Ion Ratio Lower Upper
 91 100
 92 56.7 40.5 75.3



#44
 trans-1,3-Dichloropropene
 Concen: 4.982 ug/L
 RT: 8.208 min Scan# 2136
 Delta R.T. 0.000 min
 Lab File: VU051828.D
 Acq: 11 Nov 2022 20:37

Tgt Ion: 75 Resp: 124172
 Ion Ratio Lower Upper
 75 100
 77 33.0 21.8 40.6

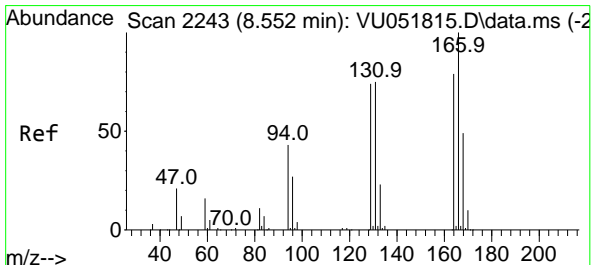
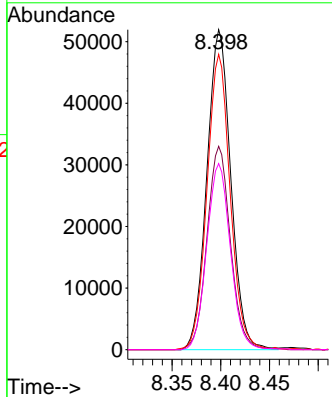
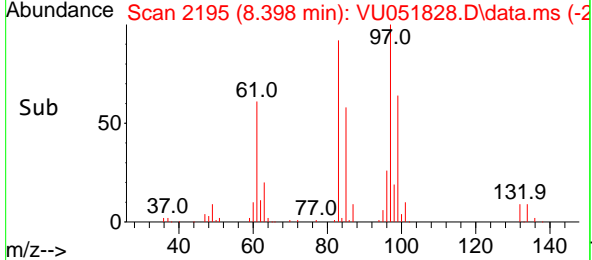
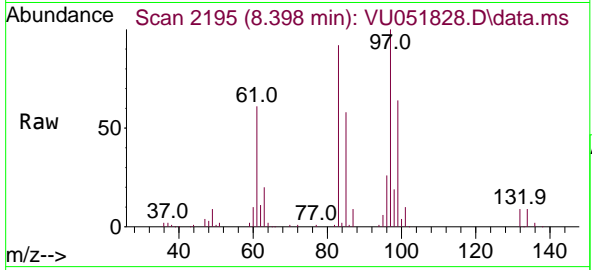




#45
 1,1,2-Trichloroethane
 Concen: 5.220 ug/L
 RT: 8.398 min Scan# 2195
 Delta R.T. 0.000 min
 Lab File: VU051828.D
 Acq: 11 Nov 2022 20:37

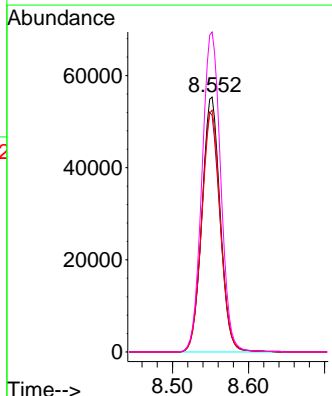
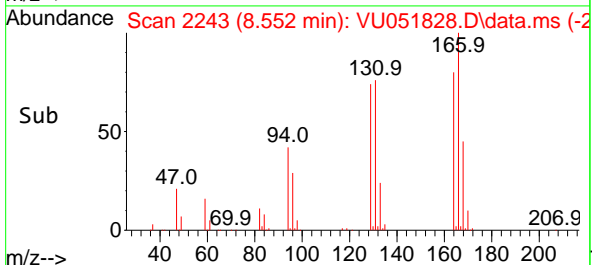
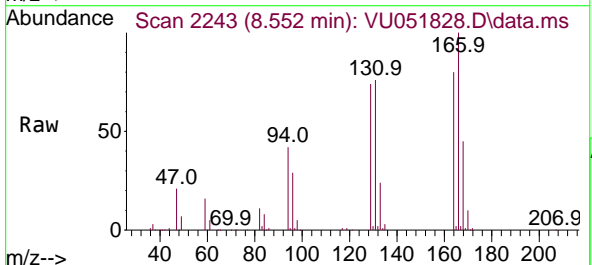
Instrument : MSVOA_U
 ClientSampleId : VSTD005199

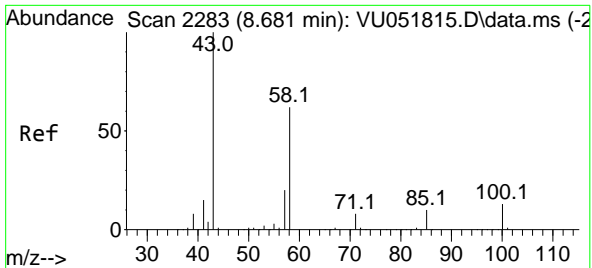
Tgt Ion	Resp	Lower	Upper
97	100		
99	63.5	43.4	80.6
83	92.3	61.3	113.9
85	58.1	39.8	73.8



#47
 Tetrachloroethene
 Concen: 5.543 ug/L
 RT: 8.552 min Scan# 2243
 Delta R.T. 0.000 min
 Lab File: VU051828.D
 Acq: 11 Nov 2022 20:37

Tgt Ion	Resp	Lower	Upper
164	100		
129	92.8	64.0	118.8
131	94.9	60.7	112.7
166	125.6	86.8	161.2



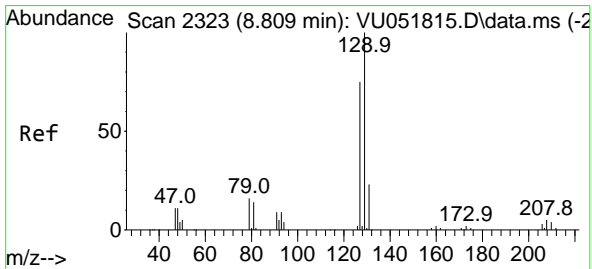
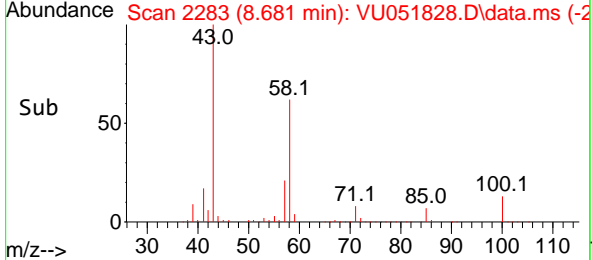
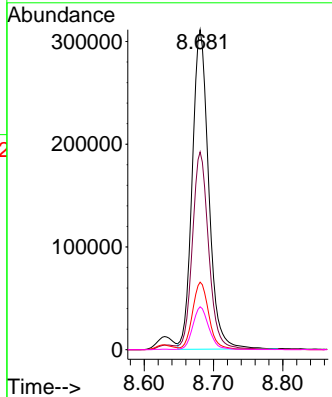
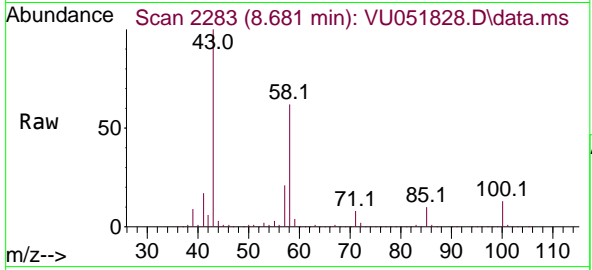


#48
 2-Hexanone
 Concen: 59.631 ug/L
 RT: 8.681 min Scan# 21
 Delta R.T. 0.000 min
 Lab File: VU051828.D
 Acq: 11 Nov 2022 20:37

Instrument : MSVOA_U
 ClientSampleId : VSTD005199

Tgt Ion: 43 Resp: 514659

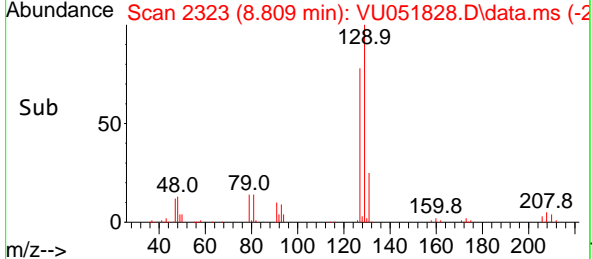
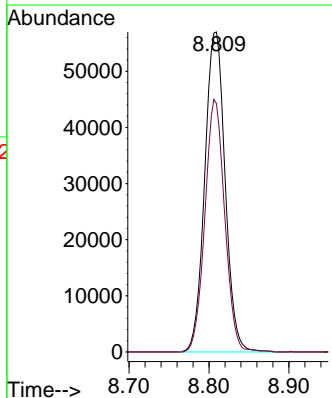
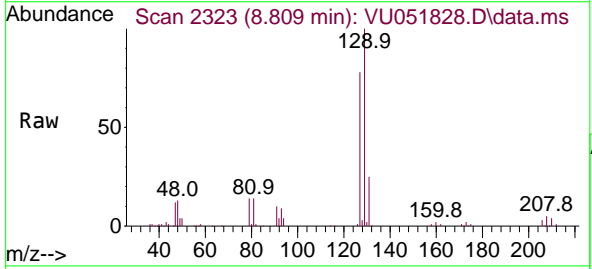
Ion	Ratio	Lower	Upper
43	100		
58	61.1	48.2	72.2
57	20.9	16.6	25.0
100	13.1	10.2	15.2

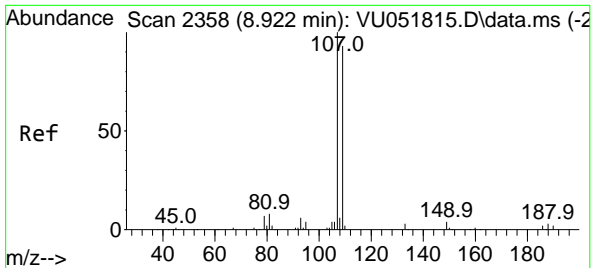


#49
 Dibromochloromethane
 Concen: 5.191 ug/L
 RT: 8.809 min Scan# 2323
 Delta R.T. 0.000 min
 Lab File: VU051828.D
 Acq: 11 Nov 2022 20:37

Tgt Ion: 129 Resp: 101025

Ion	Ratio	Lower	Upper
129	100		
127	77.6	54.8	101.8

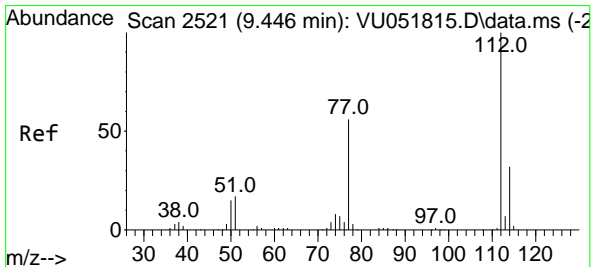
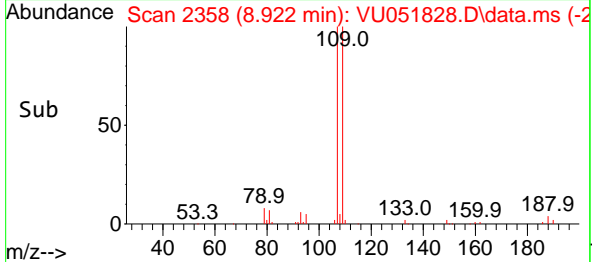
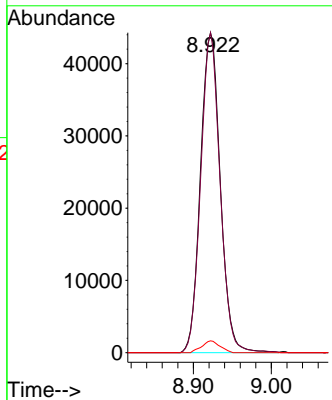
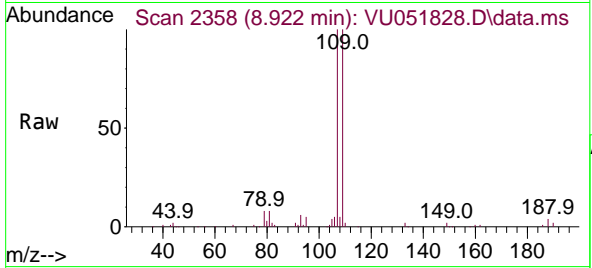




#50
 1,2-Dibromoethane
 Concen: 5.094 ug/L
 RT: 8.922 min Scan# 21
 Delta R.T. 0.000 min
 Lab File: VU051828.D
 Acq: 11 Nov 2022 20:37

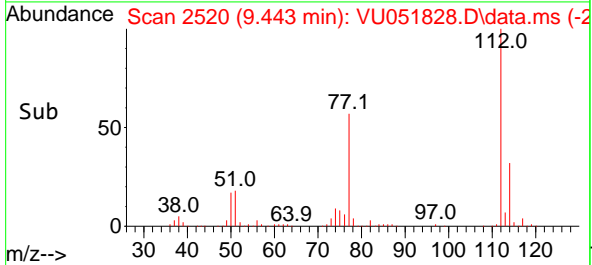
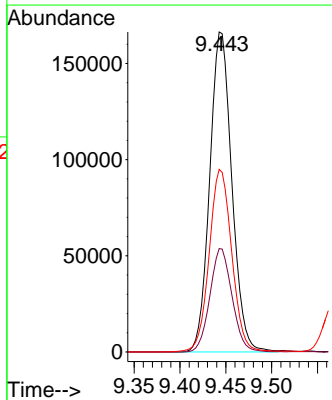
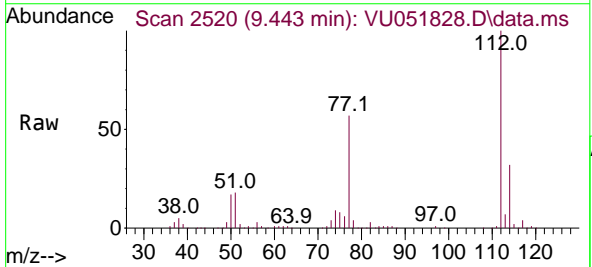
Instrument : MSVOA_U
 ClientSampleId : VSTD005199

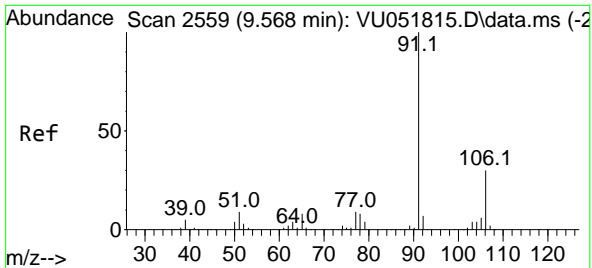
Tgt Ion	Resp	Lower	Upper
107	78283		
107	100		
109	100.0	63.0	117.0
188	3.7	3.0	4.4



#51
 Chlorobenzene
 Concen: 4.782 ug/L
 RT: 9.443 min Scan# 2520
 Delta R.T. -0.003 min
 Lab File: VU051828.D
 Acq: 11 Nov 2022 20:37

Tgt Ion	Resp	Lower	Upper
112	279351		
112	100		
114	32.3	22.0	40.8
77	57.0	46.7	70.1

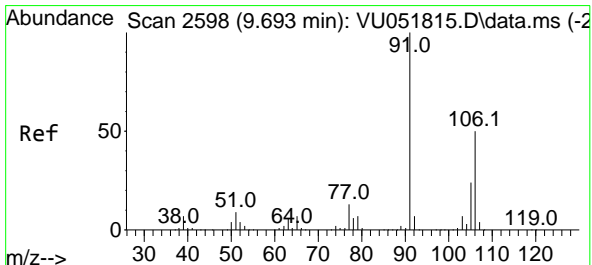
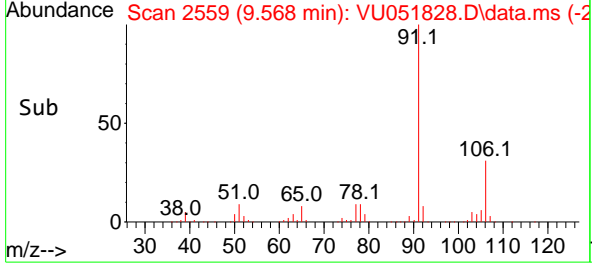
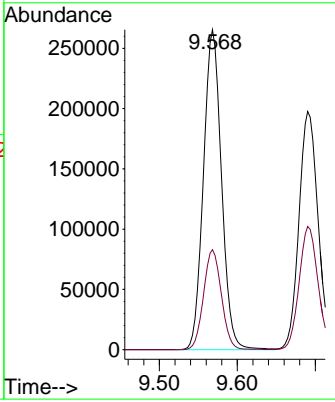
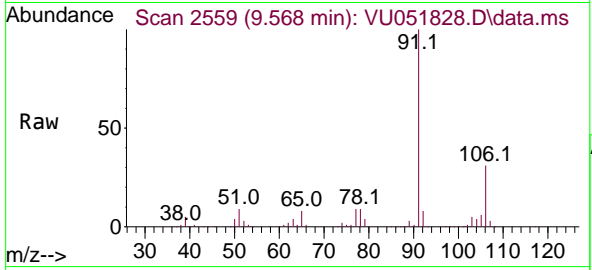




#52
 Ethylbenzene
 Concen: 4.776 ug/L
 RT: 9.568 min Scan# 2559
 Delta R.T. 0.000 min
 Lab File: VU051828.D
 Acq: 11 Nov 2022 20:37

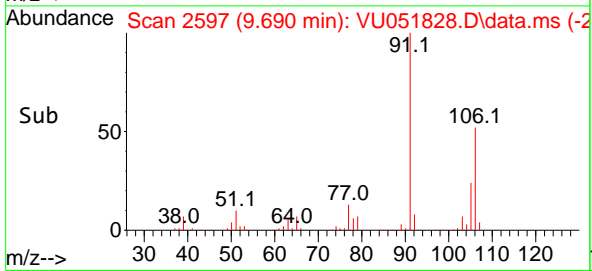
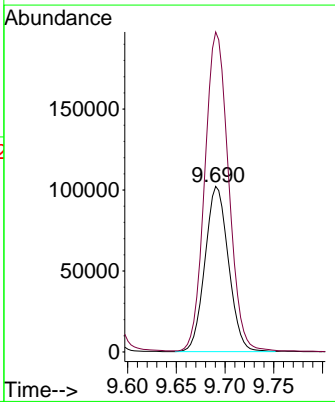
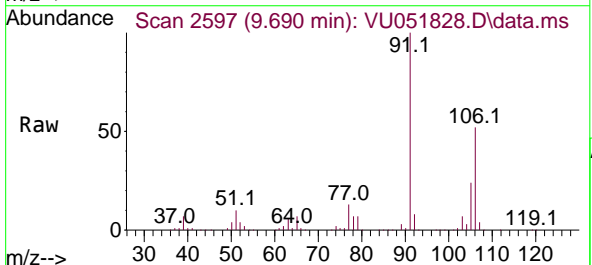
Instrument : MSVOA_U
 ClientSampleId : VSTD005199

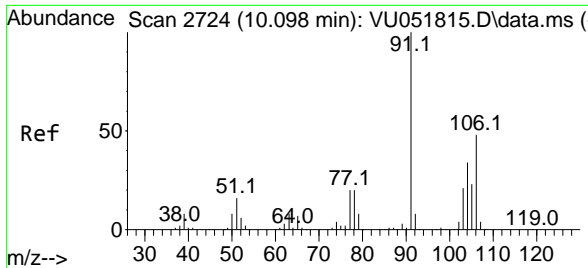
Tgt Ion: 91 Resp: 427704
 Ion Ratio Lower Upper
 91 100
 106 31.2 21.8 40.6



#53
 m,p-Xylene
 Concen: 4.931 ug/L
 RT: 9.690 min Scan# 2597
 Delta R.T. -0.003 min
 Lab File: VU051828.D
 Acq: 11 Nov 2022 20:37

Tgt Ion:106 Resp: 171545
 Ion Ratio Lower Upper
 106 100
 91 193.3 139.4 259.0

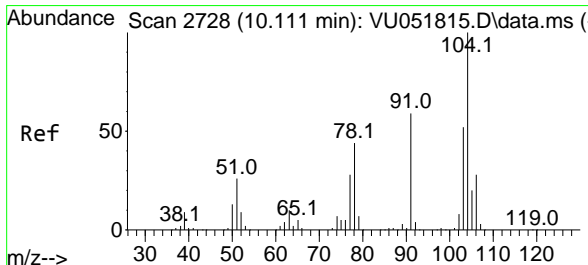
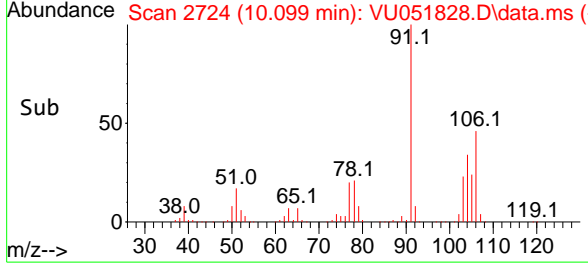
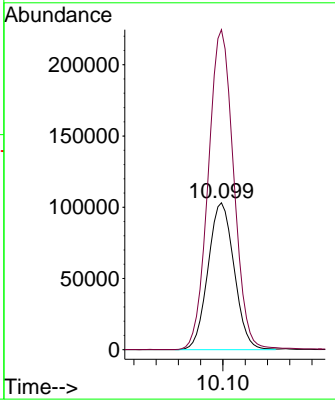
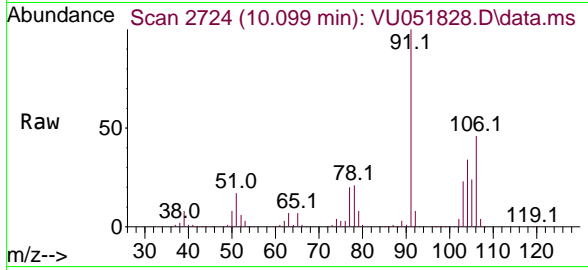




#54
 o-Xylene
 Concen: 4.934 ug/L
 RT: 10.099 min Scan# 2724
 Delta R.T. 0.000 min
 Lab File: VU051828.D
 Acq: 11 Nov 2022 20:37

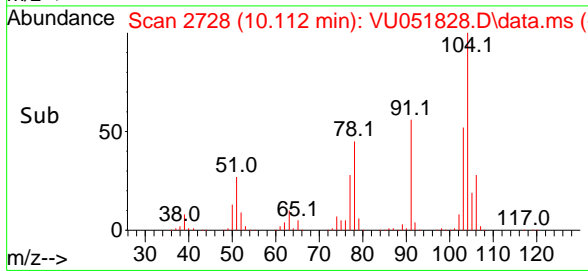
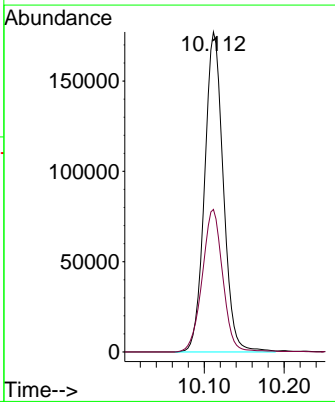
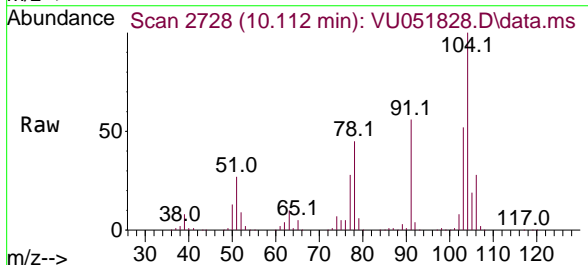
Instrument : MSVOA_U
 ClientSampleId : VSTD005199

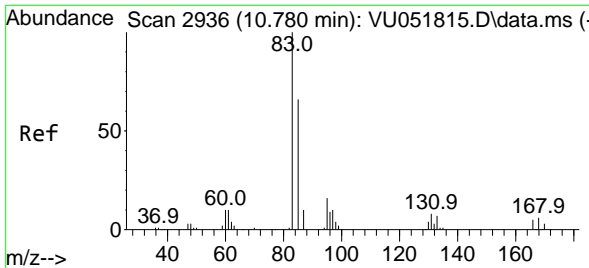
Tgt Ion:106 Resp: 167730
 Ion Ratio Lower Upper
 106 100
 91 217.9 149.2 277.2



#55
 Styrene
 Concen: 5.073 ug/L
 RT: 10.112 min Scan# 2728
 Delta R.T. 0.000 min
 Lab File: VU051828.D
 Acq: 11 Nov 2022 20:37

Tgt Ion:104 Resp: 288323
 Ion Ratio Lower Upper
 104 100
 78 44.6 31.8 59.0



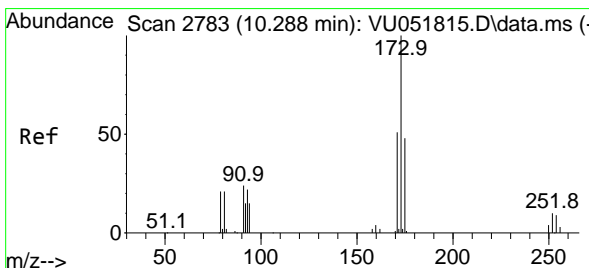
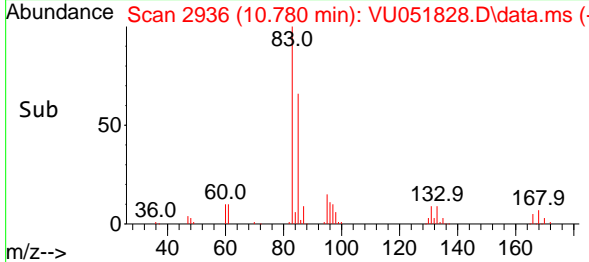
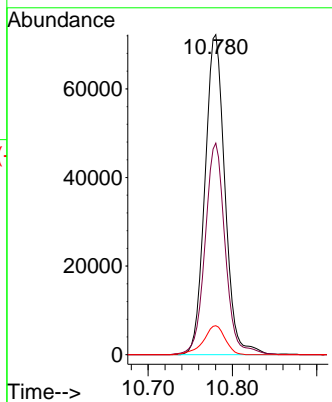
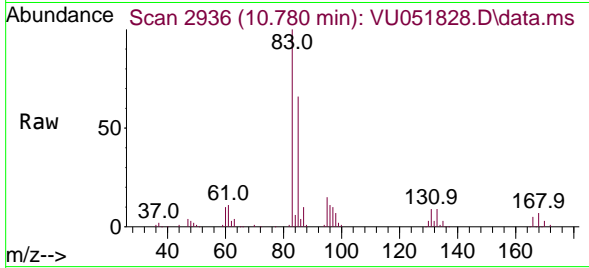


#57
 1,1,2-Tetrachloroethane
 Concen: 5.629 ug/L
 RT: 10.780 min Scan# 2936
 Delta R.T. 0.000 min
 Lab File: VU051828.D
 Acq: 11 Nov 2022 20:37

Instrument :
 MSVOA_U
 ClientSampleId :
 VSTD005199

Tgt Ion: 83 Resp: 118887

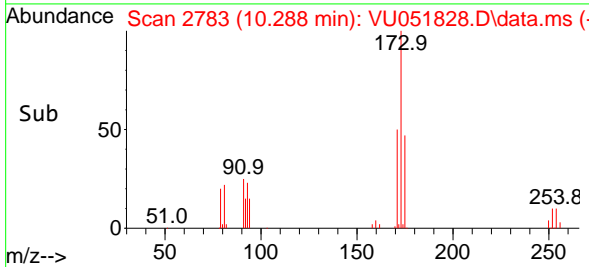
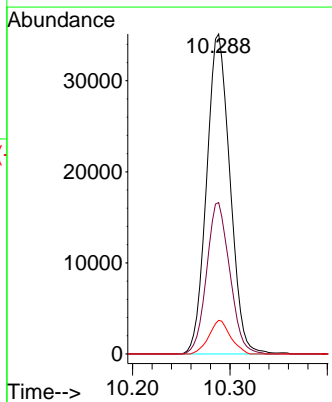
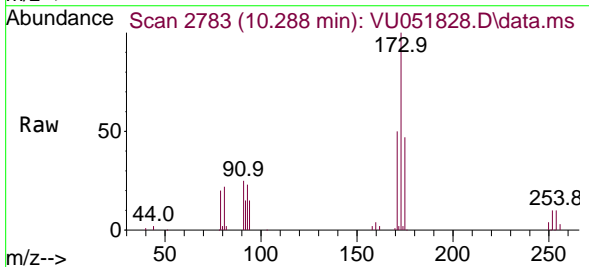
Ion	Ratio	Lower	Upper
83	100		
85	66.1	44.9	83.5
131	9.1	7.8	11.8

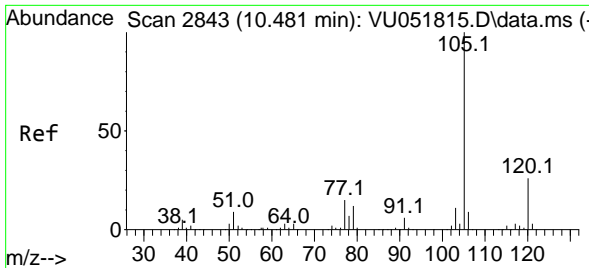


#59
 Bromoform
 Concen: 5.568 ug/L
 RT: 10.288 min Scan# 2783
 Delta R.T. 0.000 min
 Lab File: VU051828.D
 Acq: 11 Nov 2022 20:37

Tgt Ion: 173 Resp: 58522

Ion	Ratio	Lower	Upper
173	100		
175	46.9	38.7	58.1
254	9.7	7.3	10.9



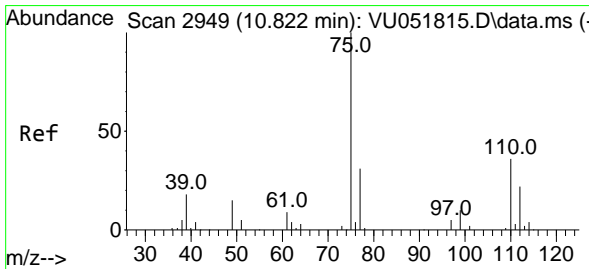
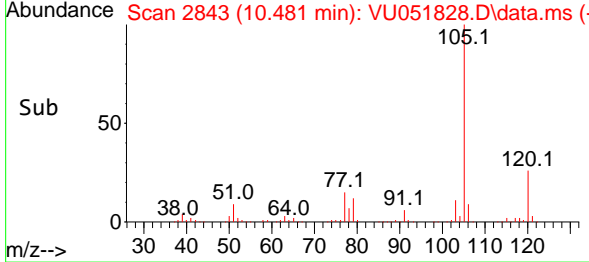
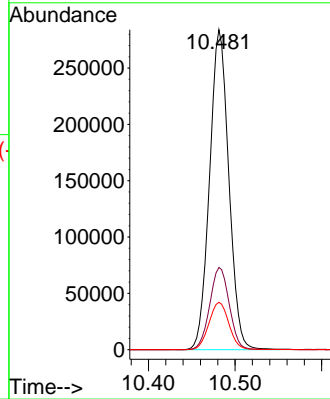
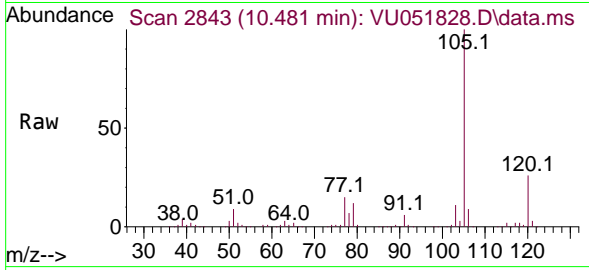


#60
 Isopropylbenzene
 Concen: 5.274 ug/L
 RT: 10.481 min Scan# 2843
 Delta R.T. 0.000 min
 Lab File: VU051828.D
 Acq: 11 Nov 2022 20:37

Instrument : MSVOA_U
 ClientSampleId : VSTD005199

Tgt Ion: 105 Resp: 438007

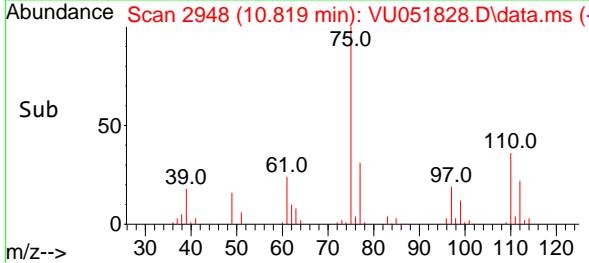
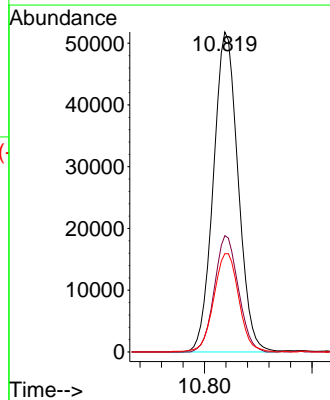
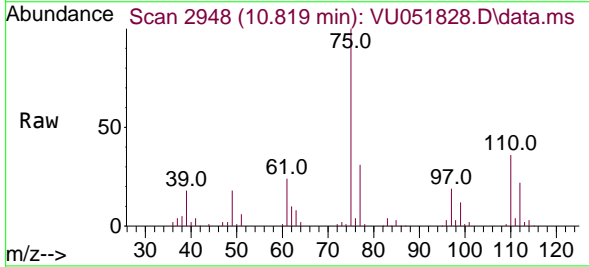
Ion	Ratio	Lower	Upper
105	100		
120	26.1	20.9	31.3
77	15.4	12.3	18.5

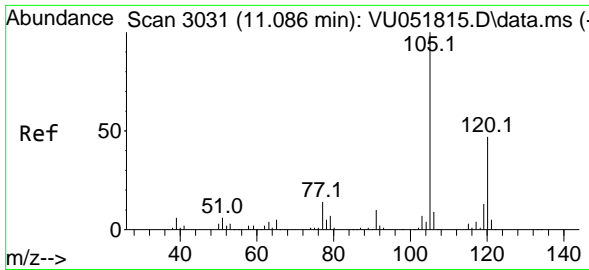


#61
 1,2,3-Trichloropropane
 Concen: 5.619 ug/L
 RT: 10.819 min Scan# 2948
 Delta R.T. -0.003 min
 Lab File: VU051828.D
 Acq: 11 Nov 2022 20:37

Tgt Ion: 75 Resp: 82650

Ion	Ratio	Lower	Upper
75	100		
110	35.2	28.7	43.1
77	31.3	26.1	39.1

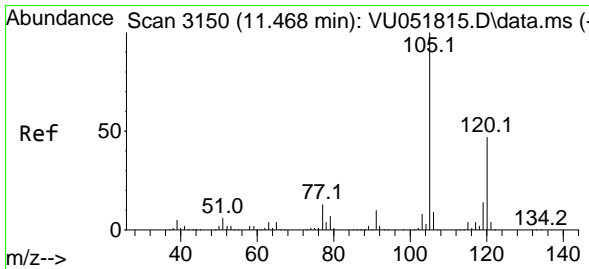
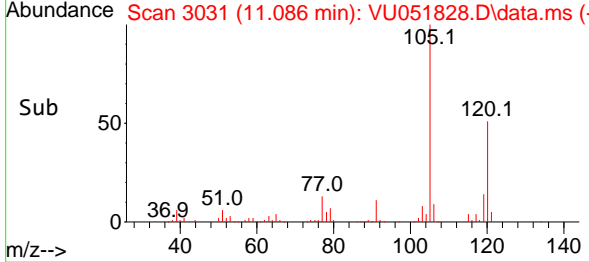
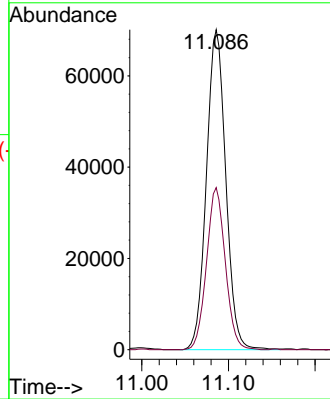
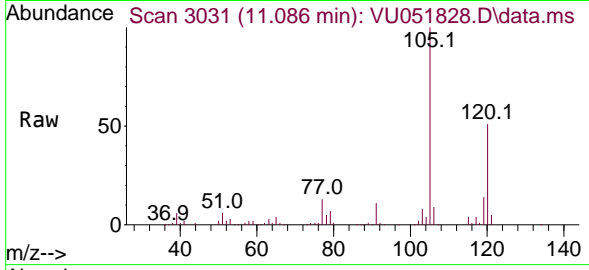




#62
 1,3,5-Trimethylbenzene
 Concen: 4.870 ug/L
 RT: 11.086 min Scan# 3031
 Delta R.T. 0.000 min
 Lab File: VU051828.D
 Acq: 11 Nov 2022 20:37

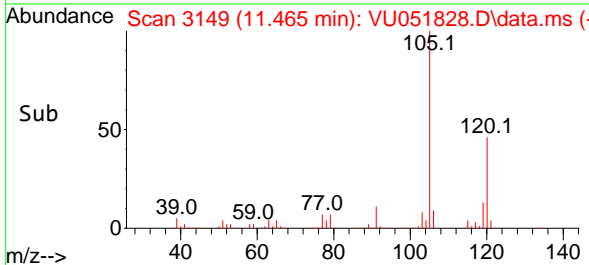
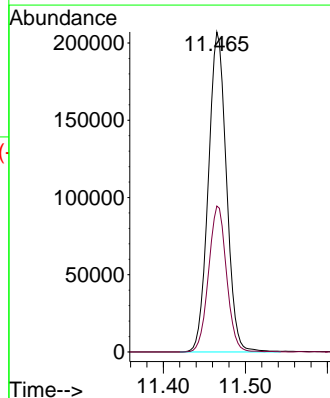
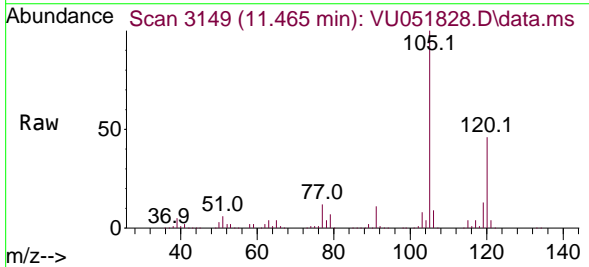
Instrument :
 MSVOA_U
 ClientSampleId :
 VSTD005199

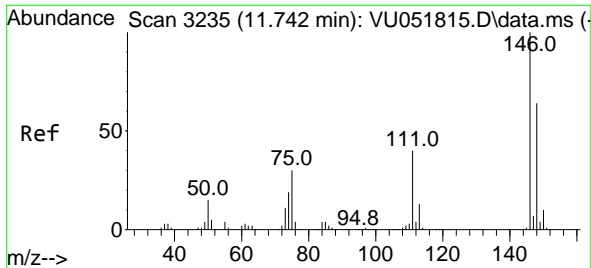
Tgt Ion:105 Resp: 108877
 Ion Ratio Lower Upper
 105 100
 120 49.1 38.6 57.8



#63
 1,2,4-Trimethylbenzene
 Concen: 4.938 ug/L
 RT: 11.465 min Scan# 3149
 Delta R.T. -0.003 min
 Lab File: VU051828.D
 Acq: 11 Nov 2022 20:37

Tgt Ion:105 Resp: 318291
 Ion Ratio Lower Upper
 105 100
 120 45.3 35.8 53.6



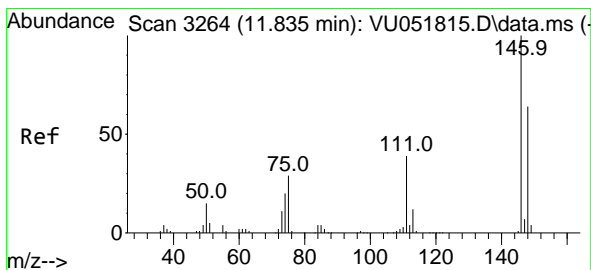
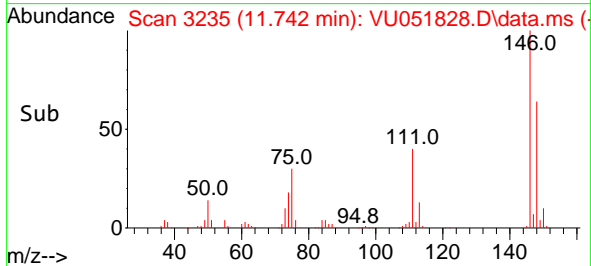
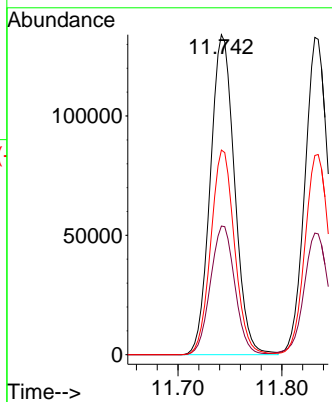
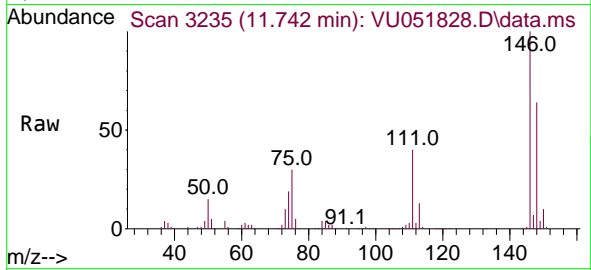


#64
 1,3-Dichlorobenzene
 Concen: 5.260 ug/L
 RT: 11.742 min Scan# 31
 Delta R.T. 0.000 min
 Lab File: VU051828.D
 Acq: 11 Nov 2022 20:37

Instrument :
 MSVOA_U
 ClientSampleId :
 VSTD005199

Tgt Ion:146 Resp: 217482

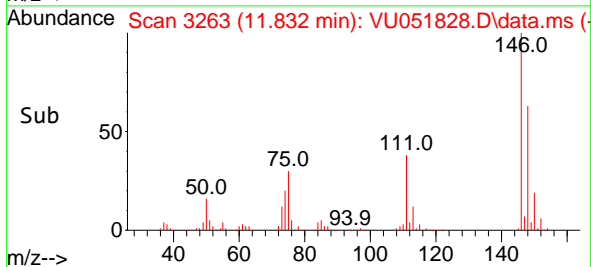
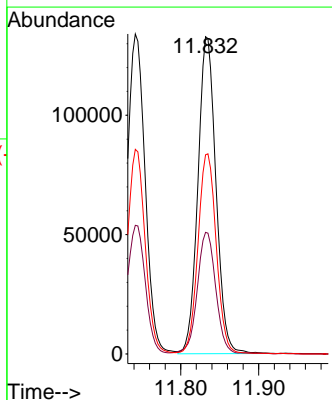
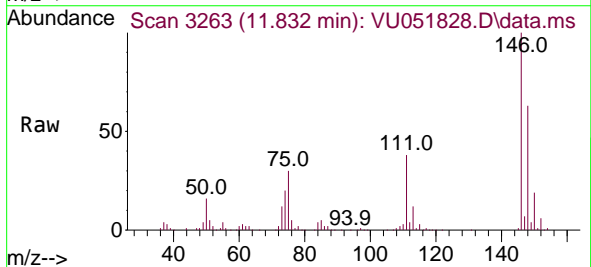
Ion	Ratio	Lower	Upper
146	100		
111	40.2	28.6	53.2
148	63.9	44.7	82.9

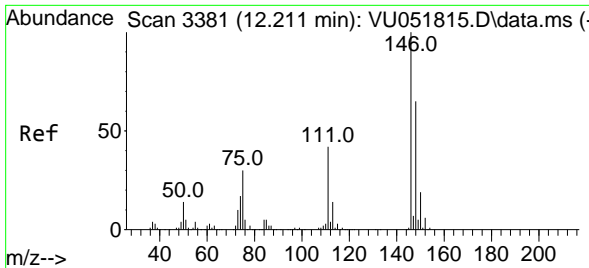


#65
 1,4-Dichlorobenzene
 Concen: 5.159 ug/L
 RT: 11.832 min Scan# 3263
 Delta R.T. -0.003 min
 Lab File: VU051828.D
 Acq: 11 Nov 2022 20:37

Tgt Ion:146 Resp: 213860

Ion	Ratio	Lower	Upper
146	100		
111	38.3	26.7	49.5
148	62.8	43.5	80.9



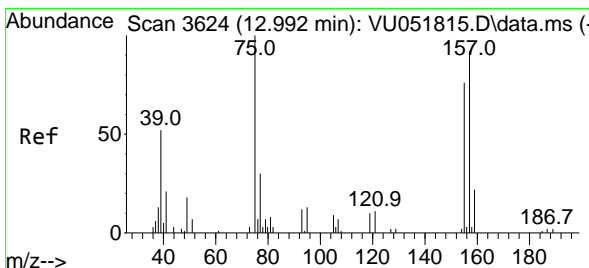
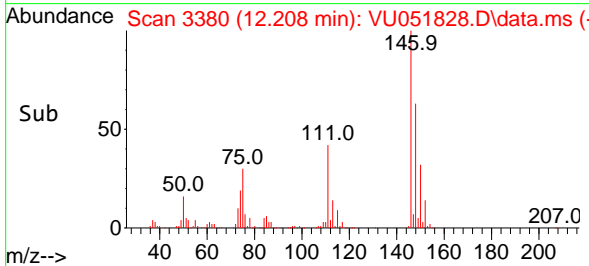
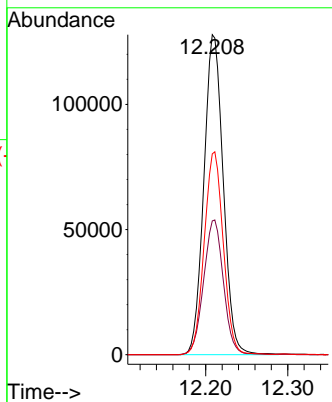
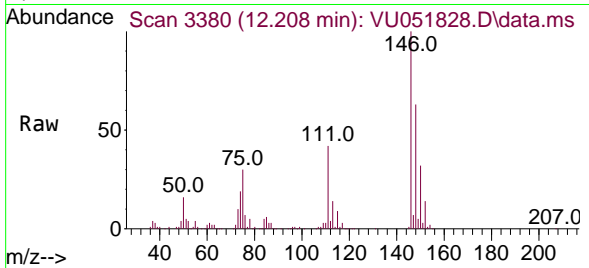


#67
 1,2-Dichlorobenzene
 Concen: 5.218 ug/L
 RT: 12.208 min Scan# 3111
 Delta R.T. -0.003 min
 Lab File: VU051828.D
 Acq: 11 Nov 2022 20:37

Instrument : MSVOA_U
 ClientSampleId : VSTD005199

Tgt Ion:146 Resp: 210121

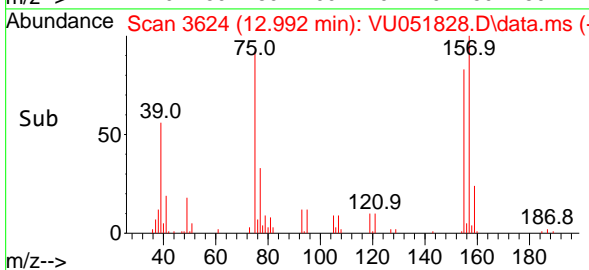
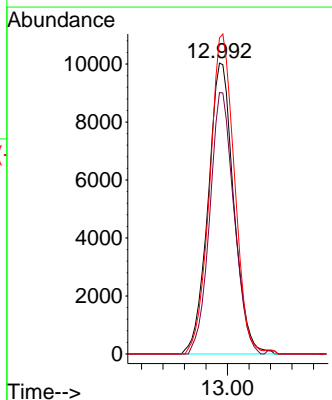
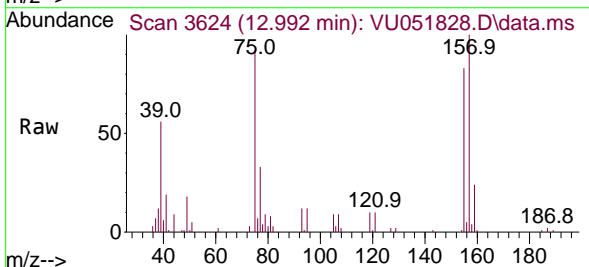
Ion	Ratio	Lower	Upper
146	100		
111	41.8	34.2	51.2
148	62.8	50.1	75.1

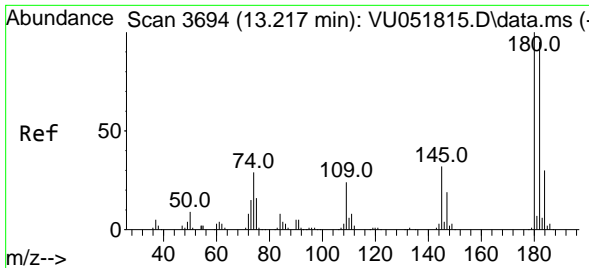


#68
 1,2-Dibromo-3-chloropropane
 Concen: 5.485 ug/L
 RT: 12.992 min Scan# 3624
 Delta R.T. 0.000 min
 Lab File: VU051828.D
 Acq: 11 Nov 2022 20:37

Tgt Ion: 75 Resp: 16613

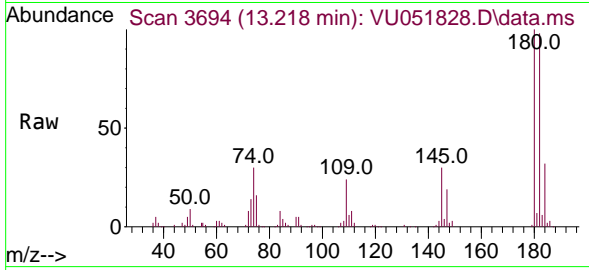
Ion	Ratio	Lower	Upper
75	100		
155	89.9	61.4	92.2
157	108.7	86.7	130.1



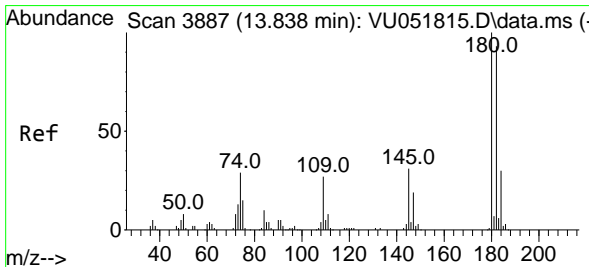
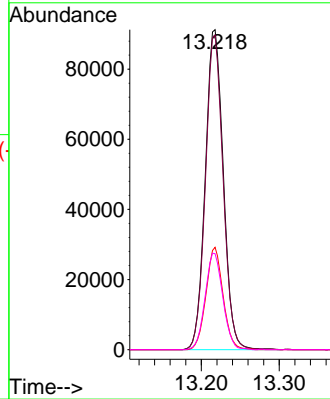
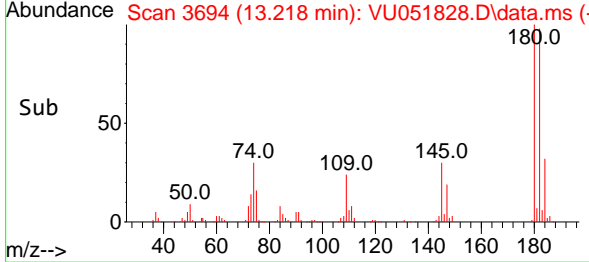


#69
 1,3,5-Trichlorobenzene
 Concen: 4.980 ug/L
 RT: 13.218 min Scan# 30
 Delta R.T. 0.000 min
 Lab File: VU051828.D
 Acq: 11 Nov 2022 20:37

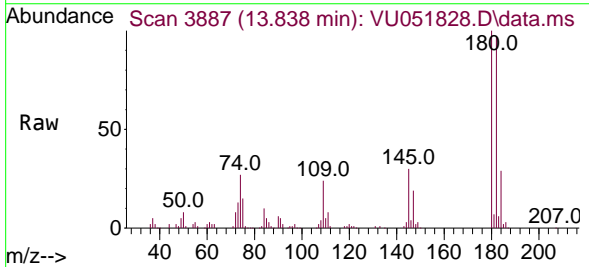
Instrument :
 MSVOA_U
 ClientSampleId :
 VSTD005199



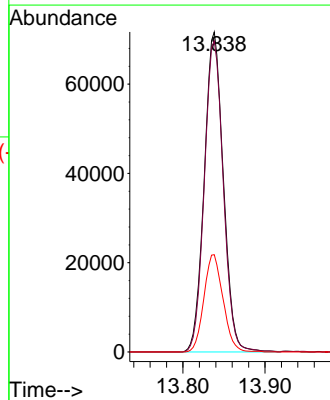
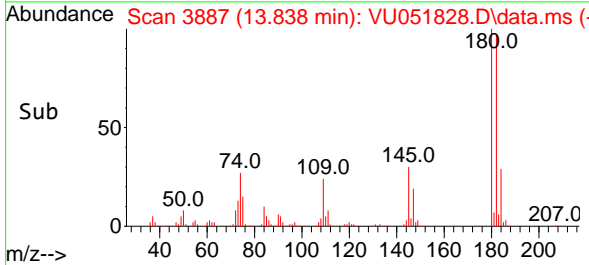
Tgt Ion:180 Resp: 146759
 Ion Ratio Lower Upper
 180 100
 182 96.3 77.0 115.6
 184 30.3 23.7 35.5
 145 29.6 23.5 35.3

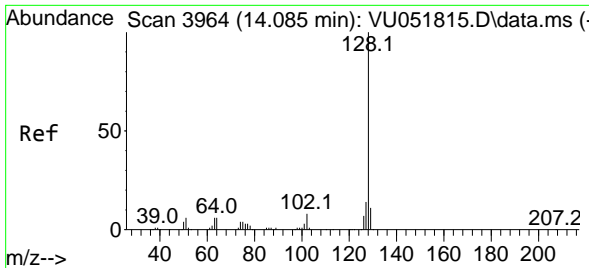


#70
 1,2,4-trichlorobenzene
 Concen: 5.132 ug/L
 RT: 13.838 min Scan# 3887
 Delta R.T. 0.000 min
 Lab File: VU051828.D
 Acq: 11 Nov 2022 20:37



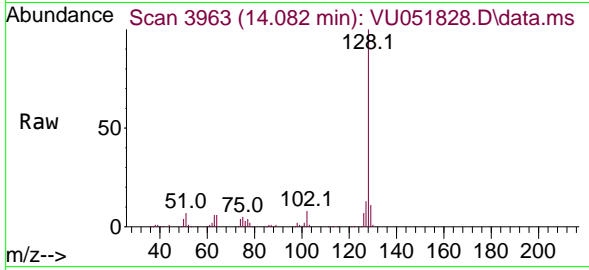
Tgt Ion:180 Resp: 116103
 Ion Ratio Lower Upper
 180 100
 182 96.3 77.8 116.6
 145 30.4 25.0 37.6



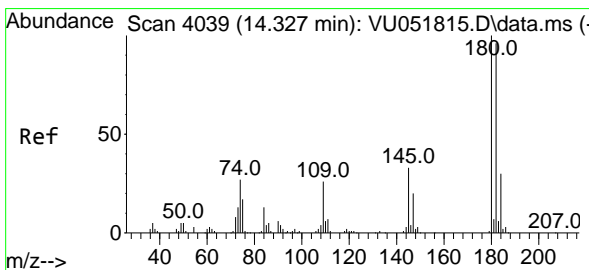
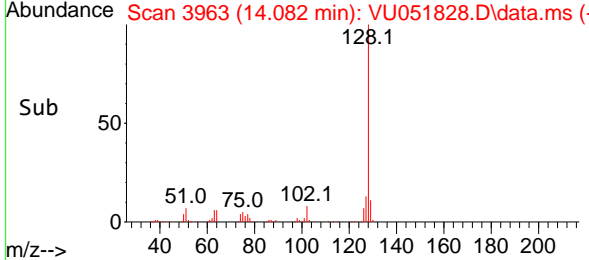
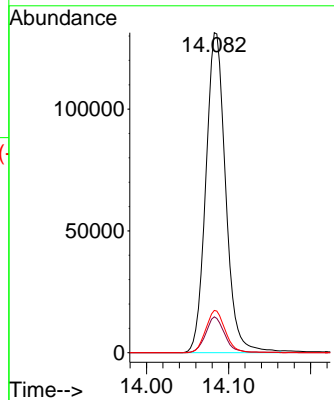


#71
 Naphthalene
 Concen: 5.211 ug/L
 RT: 14.082 min Scan# 3963
 Delta R.T. -0.003 min
 Lab File: VU051828.D
 Acq: 11 Nov 2022 20:37

Instrument : MSVOA_U
 ClientSampleId : VSTD005199



Tgt Ion:128 Resp: 220066
 Ion Ratio Lower Upper
 128 100
 129 10.9 8.4 12.6
 127 13.1 10.3 15.5



#72
 1,2,3-Trichlorobenzene
 Concen: 5.242 ug/L
 RT: 14.327 min Scan# 4039
 Delta R.T. 0.000 min
 Lab File: VU051828.D
 Acq: 11 Nov 2022 20:37

Tgt Ion:180 Resp: 119762
 Ion Ratio Lower Upper
 180 100
 182 96.5 76.1 114.1
 145 32.4 25.6 38.4

