

Data Path : Z:\voasrv\HPCHEM1\MSVOA_U\Data\VU111124\
 Data File : VU061580.D
 Acq On : 11 Nov 2024 12:42
 Operator : MD/SY
 Sample : VSTDCCC005
 Misc : 25mL/MSVOA_U/WATER
 ALS Vial : 2 Sample Multiplier: 1

Instrument :
 MSVOA_U
 ClientSampleId :

Quant Time: Nov 12 03:40:26 2024
 Quant Method : Z:\voasrv\HPCHEM1\MSVOA_U\Method\SFAMUTR102324WMA.M
 Quant Title : TRACE VOA SFAM1.0
 QLast Update : Sat Nov 09 01:40:03 2024
 Response via : Initial Calibration

Compound	R.T.	QI on	Response	Conc	Units	Dev(Min)
Internal Standards						
1) 1,4-Difluorobenzene	6.242	114	189459	5.000	ug/L	0.00
28) Chlorobenzene-d5	9.412	117	181137	5.000	ug/L	0.00
58) 1,4-Dichlorobenzene-d4	11.804	152	89622	5.000	ug/L	0.00
System Monitoring Compounds						
4) Vinyl chloride-d3	1.596	65	75528	5.869	ug/L	0.00
Spike Amount	5.000	Range	40 - 130	Recovery	=	117.400%
7) Chloroethane-d5	1.911	69	70619	5.985	ug/L	0.00
Spike Amount	5.000	Range	65 - 130	Recovery	=	119.800%
11) 1,1-Dichloroethene-d2	2.560	65	32225	5.852	ug/L	0.00
Spike Amount	5.000	Range	60 - 125	Recovery	=	117.000%
20) 2-Butanone-d5	4.624	46	162430	62.163	ug/L	0.00
Spike Amount	50.000	Range	40 - 130	Recovery	=	124.320%
24) Chloroform-d	5.052	84	143988	5.894	ug/L	0.00
Spike Amount	5.000	Range	70 - 125	Recovery	=	117.800%
26) 1,2-Dichloroethane-d4	5.692	65	71538	5.875	ug/L	0.00
Spike Amount	5.000	Range	70 - 130	Recovery	=	117.600%
32) Benzene-d6	5.718	84	297910	5.837	ug/L	0.00
Spike Amount	5.000	Range	70 - 125	Recovery	=	116.800%
36) 1,2-Dichloropropane-d6	6.682	67	89420	5.827	ug/L	0.00
Spike Amount	5.000	Range	60 - 140	Recovery	=	116.600%
41) Toluene-d8	7.891	98	279783	5.863	ug/L	0.00
Spike Amount	5.000	Range	70 - 130	Recovery	=	117.200%
43) trans-1,3-Dichloropropene	8.174	79	35215	5.622	ug/L	0.00
Spike Amount	5.000	Range	55 - 130	Recovery	=	112.400%
46) 2-Hexanone-d5	8.627	63	139678	54.446	ug/L	0.00
Spike Amount	50.000	Range	45 - 130	Recovery	=	108.900%
56) 1,1,2,2-Tetrachloroethene	10.746	84	71916	6.198	ug/L	0.00
Spike Amount	5.000	Range	65 - 120	Recovery	=	124.000%#
66) 1,2-Dichlorobenzene-d4	12.184	152	94237	5.938	ug/L	0.00
Spike Amount	5.000	Range	80 - 120	Recovery	=	118.800%
Target Compounds						
2) Dichlorodifluoromethane	1.383	85	52863	4.185	ug/L	99
3) Chloromethane	1.518	50	49512	3.717	ug/L	100
5) Vinyl chloride	1.602	62	57966	3.958	ug/L	98
6) Bromomethane	1.853	94	39022	4.021	ug/L	99
8) Chloroethane	1.930	64	46604	4.322	ug/L	97
9) Trichlorofluoromethane	2.132	101	87624	4.405	ug/L	99
10) 1,1,2-Trichloro-1,2,2-trifluoroethane	2.573	101	57411	4.861	ug/L	98
12) 1,1-Dichloroethene	2.573	96	49243	4.396	ug/L	90
13) Acetone	2.640	43	81676	49.351	ug/L	99
14) Carbon disulfide	2.788	76	132705	3.551	ug/L	99
15) Methyl Acetate	2.952	43	19569	4.775	ug/L	100
16) Methylene chloride	3.039	84	58607	4.440	ug/L	99
17) Methyl tert-butyl Ether	3.354	73	133465	4.396	ug/L	100
18) trans-1,2-Dichloroethene	3.348	96	55152	4.453	ug/L	90
19) 1,1-Dichloroethane	3.859	63	103260	4.420	ug/L	99
21) 2-Butanone	4.705	43	132016	50.317	ug/L	98
22) cis-1,2-Dichloroethene	4.660	96	65208	4.609	ug/L	96
23) Bromochloromethane	4.968	128	29573	4.968	ug/L	96
25) Chloroform	5.078	83	115930	4.720	ug/L	98

Data Path : Z:\voasrv\HPCHEM1\MSVOA_U\Data\VU111124\
 Data File : VU061580.D
 Acq On : 11 Nov 2024 12:42
 Operator : MD/SY
 Sample : VSTDCCC005
 Misc : 25mL/MSVOA_U/WATER
 ALS Vial : 2 Sample Multiplier: 1

Instrument :
 MSVOA_U
ClientSampleId :

Quant Time: Nov 12 03:40:26 2024
 Quant Method : Z:\voasrv\HPCHEM1\MSVOA_U\Method\SFAMUTR102324WMA.M
 Quant Title : TRACE VOA SFAM1.0
 QLast Update : Sat Nov 09 01:40:03 2024
 Response via : Initial Calibration

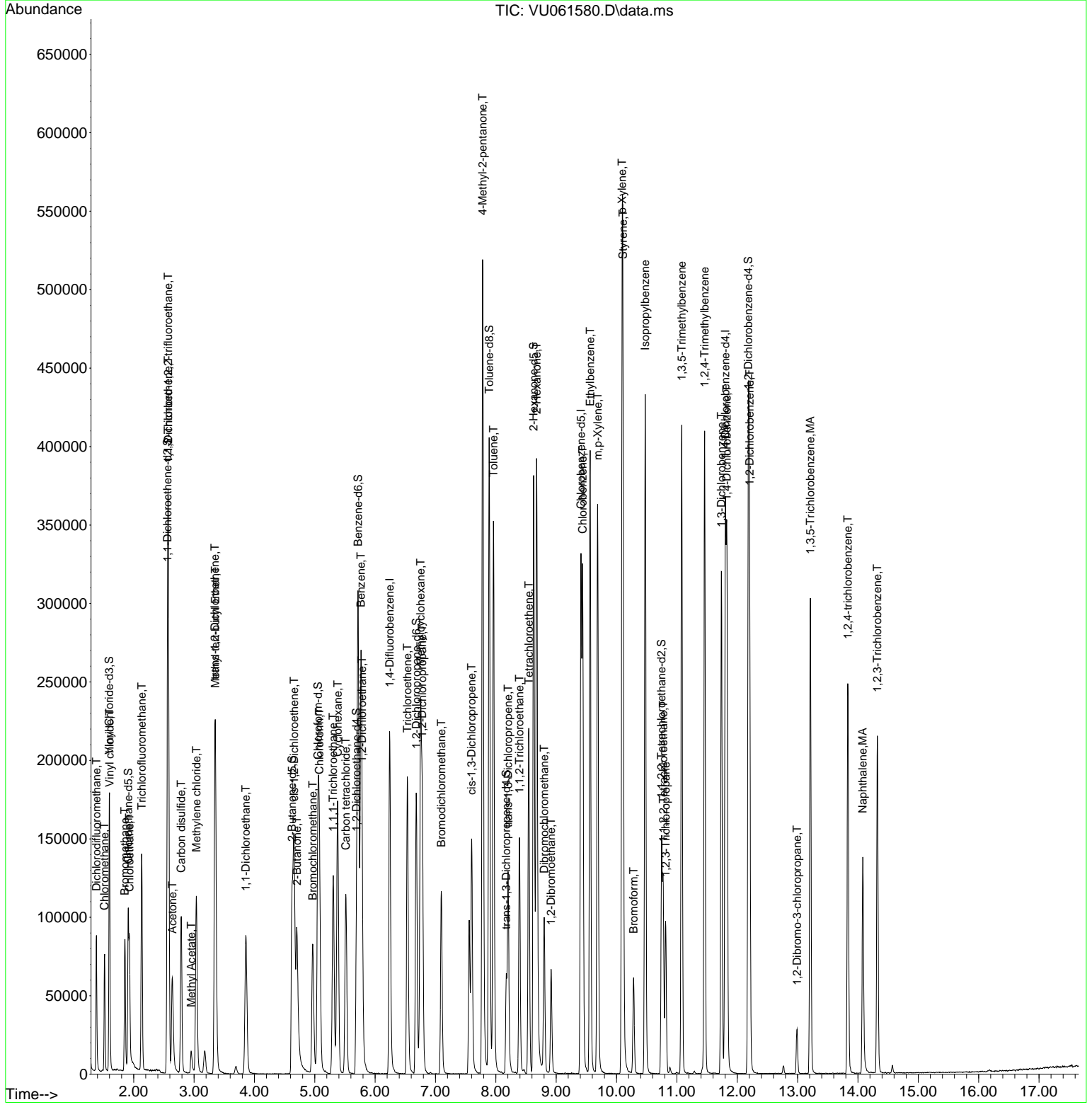
Compound	R. T.	QI on	Response	Conc	Units	Dev(Min)
27) 1,2-Dichloroethane	5.785	62	69239	4.461	ug/L	99
29) 1,1,1-Trichloroethane	5.306	97	92663	4.178	ug/L	98
30) Cyclohexane	5.380	56	86112	3.871	ug/L	98
31) Carbon tetrachloride	5.515	117	79223	4.174	ug/L	100
33) Benzene	5.766	78	245412	4.381	ug/L	100
34) Trichloroethene	6.534	95	65717	4.313	ug/L	99
35) Methylcyclohexane	6.753	83	97535	4.021	ug/L	99
37) 1,2-Dichloropropane	6.782	63	65348	4.602	ug/L	99
38) Bromodichloromethane	7.097	83	77933	4.337	ug/L	99
39) cis-1,3-Dichloropropene	7.598	75	94185	4.295	ug/L	100
40) 4-Methyl-2-pentanone	7.782	43	327675	46.367	ug/L	100
42) Toluene	7.962	91	266029	4.373	ug/L	98
44) trans-1,3-Dichloropropene	8.203	75	75844	4.244	ug/L	99
45) 1,1,2-Trichloroethane	8.393	97	48367	4.733	ug/L	95
47) Tetrachloroethene	8.547	164	48963	4.600	ug/L	99
48) 2-Hexanone	8.676	43	246952	49.416	ug/L	99
49) Dibromochloromethane	8.801	129	50628	4.368	ug/L	95
50) 1,2-Dibromoethane	8.917	107	45156	4.549	ug/L	95
51) Chlorobenzene	9.441	112	172092	4.475	ug/L	98
52) Ethylbenzene	9.563	91	289784	4.331	ug/L	99
53) m,p-Xylene	9.688	106	110017	4.316	ug/L	95
54) o-Xylene	10.094	106	107911	4.289	ug/L	99
55) Styrene	10.106	104	178287	4.420	ug/L	98
57) 1,1,2,2-Tetrachloroethane	10.775	83	59739	4.852	ug/L	98
59) Bromoform	10.283	173	27157	4.094	ug/L	99
60) Isopropylbenzene	10.476	105	288741	4.217	ug/L	99
61) 1,2,3-Trichloropropane	10.814	75	40678	4.556	ug/L	99
62) 1,3,5-Trimethylbenzene	11.081	105	227355	4.079	ug/L	100
63) 1,2,4-Trimethylbenzene	11.460	105	227554	4.130	ug/L	98
64) 1,3-Dichlorobenzene	11.740	146	132152	4.586	ug/L	99
65) 1,4-Dichlorobenzene	11.830	146	130833	4.454	ug/L	98
67) 1,2-Dichlorobenzene	12.206	146	125338	4.622	ug/L	98
68) 1,2-Dibromo-3-chloropropane	12.991	75	7509	4.006	ug/L	98
69) 1,3,5-Trichlorobenzene	13.212	180	94685	4.794	ug/L	98
70) 1,2,4-trichlorobenzene	13.833	180	75725	4.751	ug/L	99
71) Naphthalene	14.081	128	121369	4.825	ug/L	99
72) 1,2,3-Trichlorobenzene	14.322	180	67935	5.094	ug/L	97

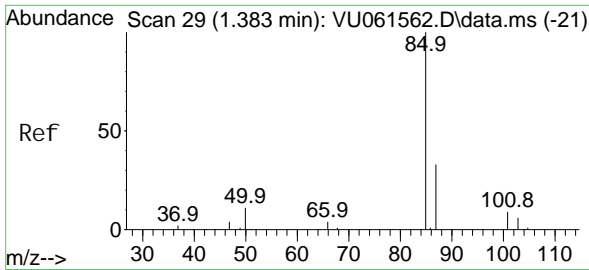
(#) = qualifier out of range (m) = manual integration (+) = signals summed

Data Path : Z:\voasrv\HPCHEM1\MSVOA_U\Data\VU111124\
 Data File : VU061580.D
 Acq On : 11 Nov 2024 12: 42
 Operator : MD/SY
 Sample : VSTDC005
 Misc : 25mL/MSVOA_U/WATER
 ALS Vial : 2 Sample Multiplier: 1

Instrument :
 MSVOA_U
ClientSampleId :

Quant Time: Nov 12 03: 40: 26 2024
 Quant Method : Z:\voasrv\HPCHEM1\MSVOA_U\Method\SFAMUTR102324WMA. M
 Quant Title : TRACE VOA SFAM1.0
 QLast Update : Sat Nov 09 01: 40: 03 2024
 Response via : Initial Calibration

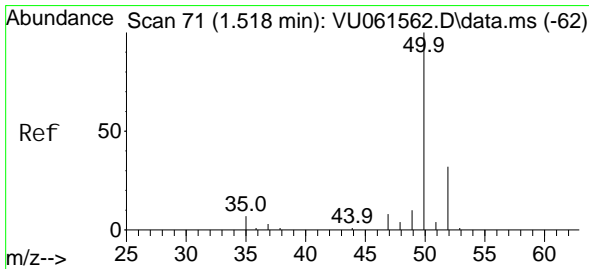
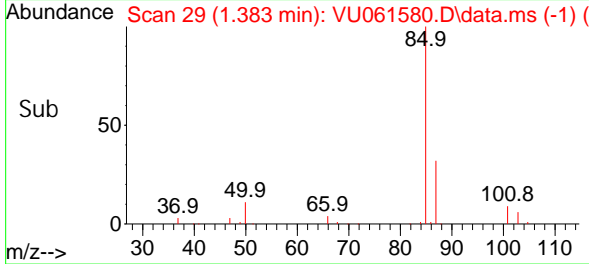
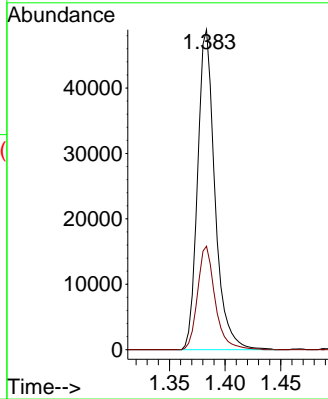
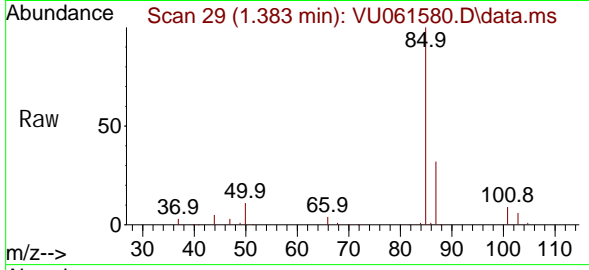




#2
 Dichlorodifluoromethane
 Concen: 4.185 ug/L
 RT: 1.383 min Scan# 29
 Delta R.T. 0.000 min
 Lab File: VU061580.D
 Acq: 11 Nov 2024 12:42

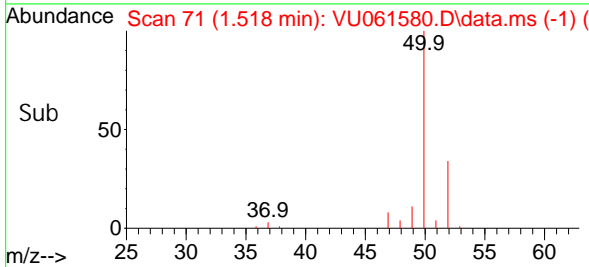
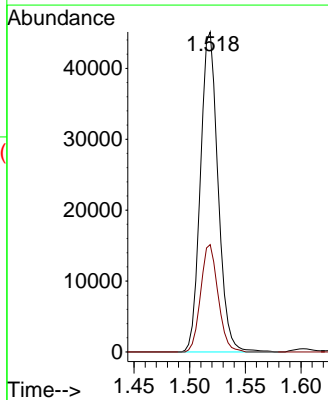
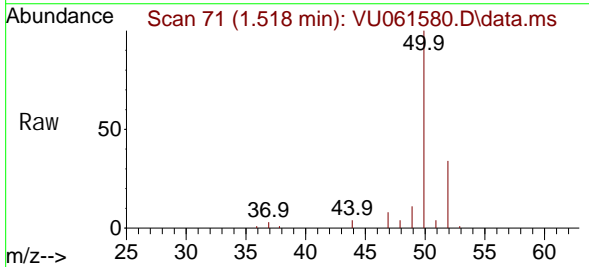
Instrument :
 MSVOA_U
 ClientSampleId :

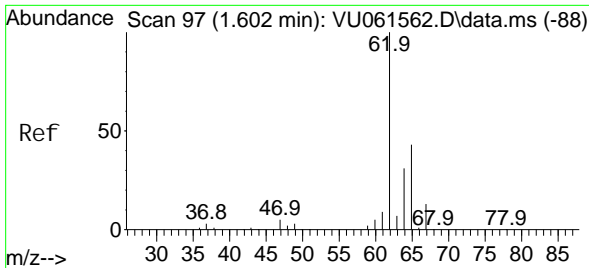
Tgt Ion: 85 Resp: 52863
 Ion Ratio Lower Upper
 85 100
 87 32.8 25.7 38.5



#3
 Chloromethane
 Concen: 3.717 ug/L
 RT: 1.518 min Scan# 71
 Delta R.T. 0.000 min
 Lab File: VU061580.D
 Acq: 11 Nov 2024 12:42

Tgt Ion: 50 Resp: 49512
 Ion Ratio Lower Upper
 50 100
 52 33.5 23.4 43.4

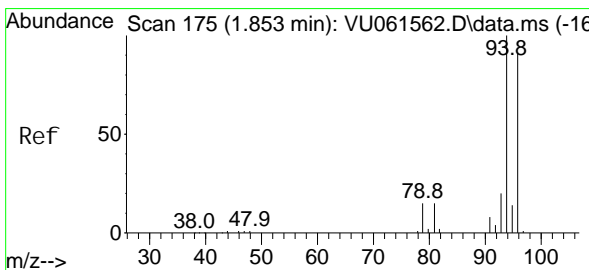
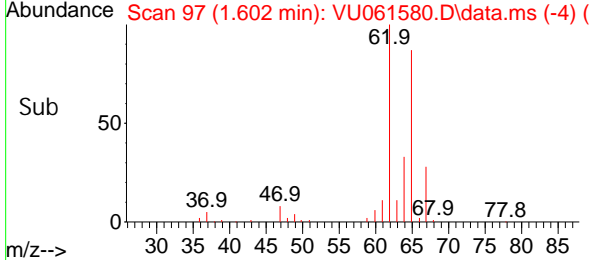
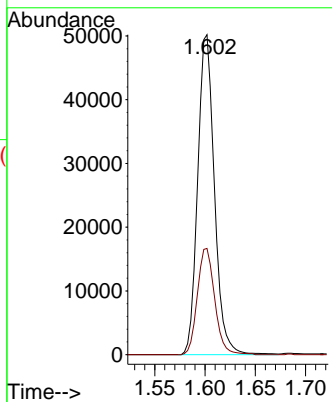
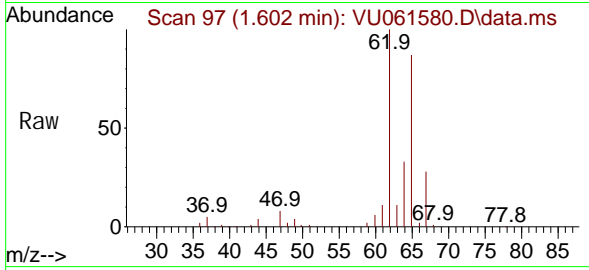




#5
 Vinyl chloride
 Concen: 3.958 ug/L
 RT: 1.602 min Scan# 91
 Delta R.T. 0.000 min
 Lab File: VU061580.D
 Acq: 11 Nov 2024 12:42

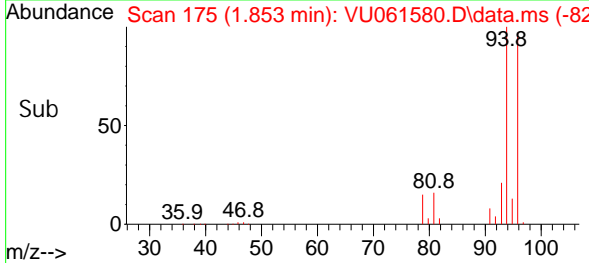
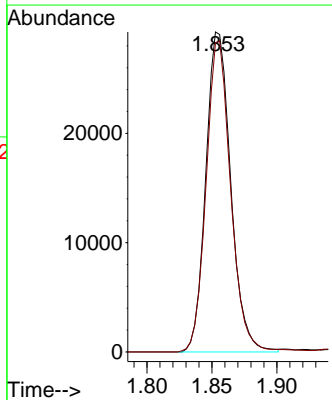
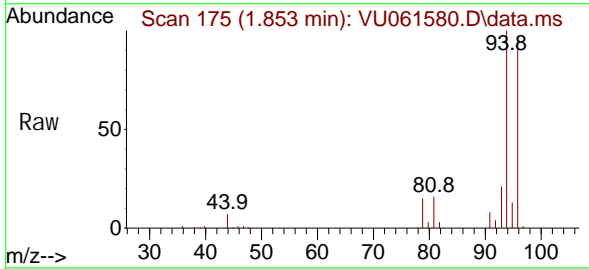
Instrument : MSVOA_U
 ClientSampleId :

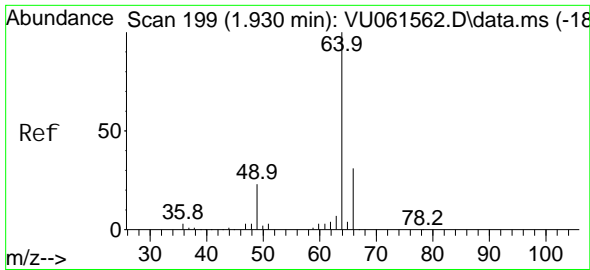
Tgt Ion: 62 Resp: 57966
 Ion Ratio Lower Upper
 62 100
 64 33.2 22.6 42.0



#6
 Bromomethane
 Concen: 4.021 ug/L
 RT: 1.853 min Scan# 175
 Delta R.T. 0.000 min
 Lab File: VU061580.D
 Acq: 11 Nov 2024 12:42

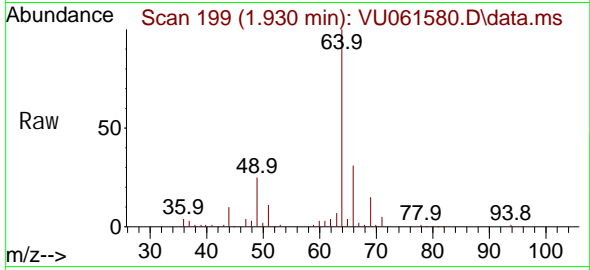
Tgt Ion: 94 Resp: 39022
 Ion Ratio Lower Upper
 94 100
 96 96.6 66.9 124.3



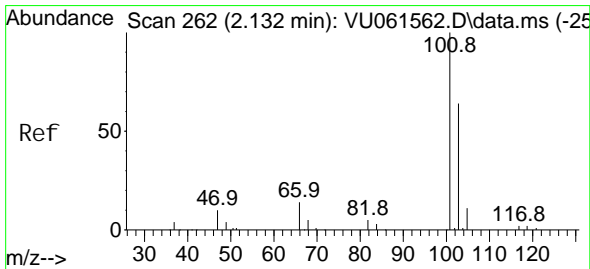
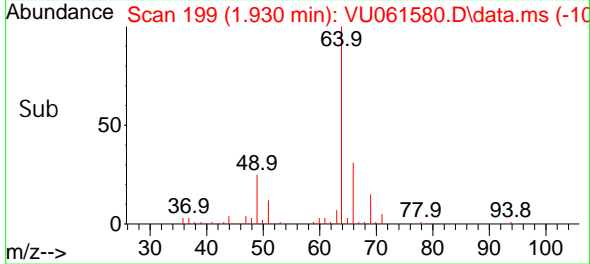
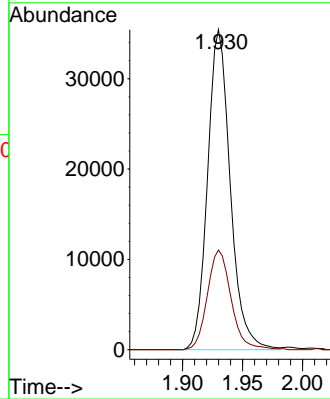


#8
 Chloroethane
 Concen: 4.322 ug/L
 RT: 1.930 min Scan# 199
 Delta R.T. 0.000 min
 Lab File: VU061580.D
 Acq: 11 Nov 2024 12:42

Instrument : MSVOA_U
 ClientSampleId :

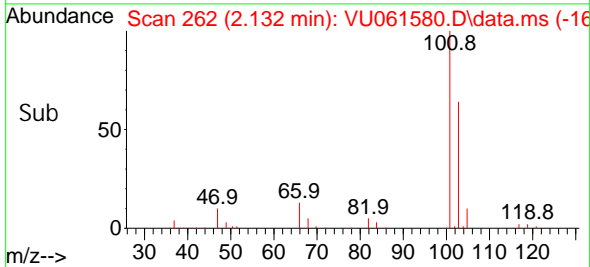
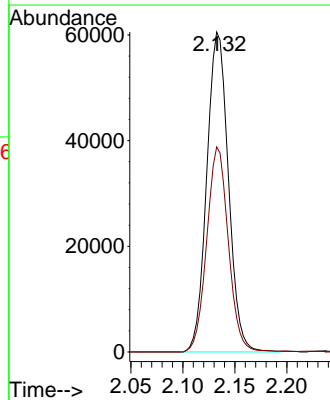
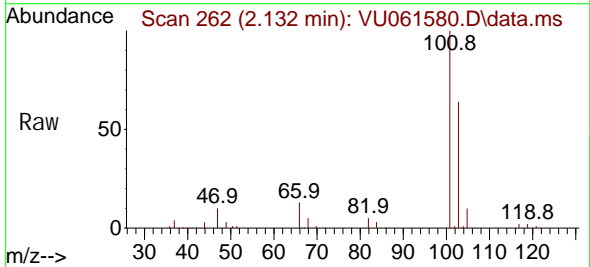


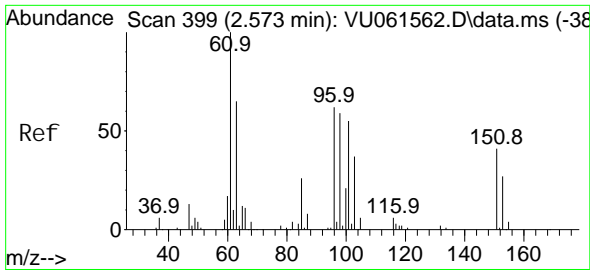
Tgt Ion: 64 Resp: 46604
 Ion Ratio Lower Upper
 64 100
 66 31.2 23.1 42.9



#9
 Trichlorofluoromethane
 Concen: 4.405 ug/L
 RT: 2.132 min Scan# 262
 Delta R.T. 0.000 min
 Lab File: VU061580.D
 Acq: 11 Nov 2024 12:42

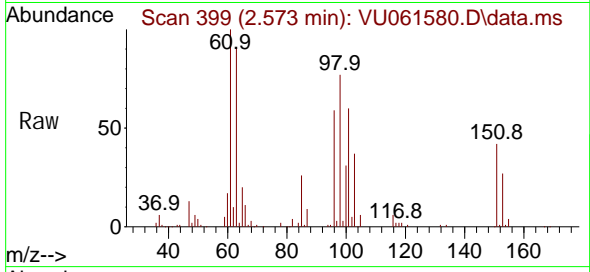
Tgt Ion: 101 Resp: 87624
 Ion Ratio Lower Upper
 101 100
 103 64.2 50.6 75.8



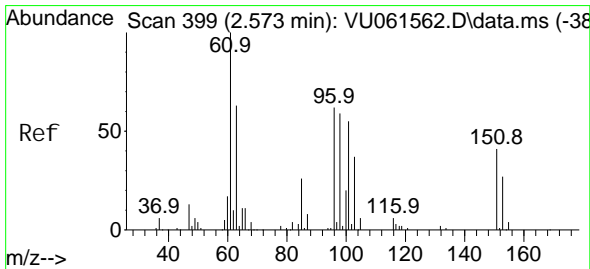
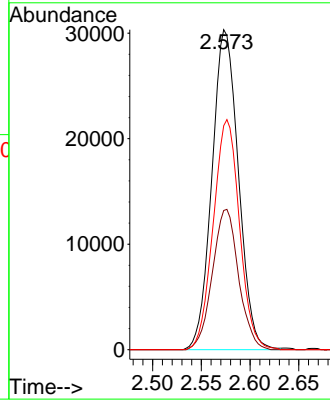
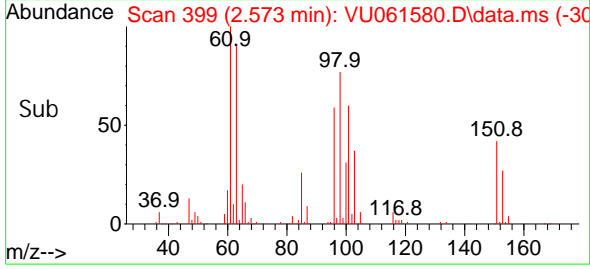


#10
 1,1,2-Tri chloro-1,2,2-tri fluoroethane
 Concen: 4.861 ug/L
 RT: 2.573 min Scan# 399
 Delta R.T. 0.000 min
 Lab File: VU061580.D
 Acq: 11 Nov 2024 12:42

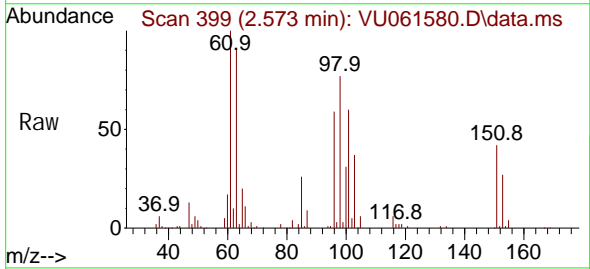
Instrument :
 MSVOA_U
 ClientSampleId :



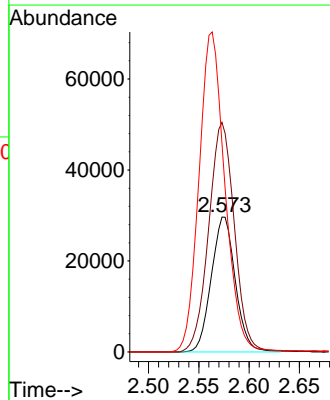
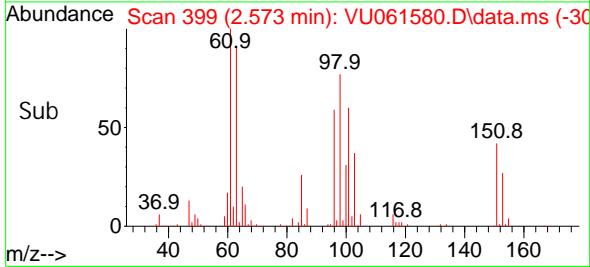
Tgt Ion: 101 Resp: 57411
 Ion Ratio Lower Upper
 101 100
 85 43.3 35.6 53.4
 151 71.3 55.9 83.9

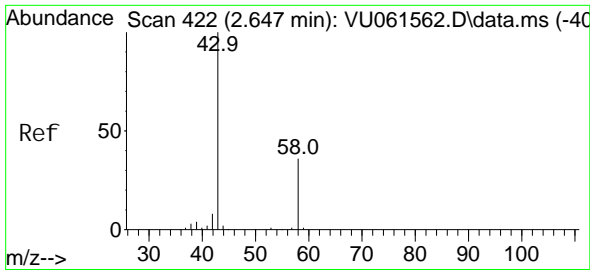


#12
 1,1-Di chloroethene
 Concen: 4.396 ug/L
 RT: 2.573 min Scan# 399
 Delta R.T. 0.000 min
 Lab File: VU061580.D
 Acq: 11 Nov 2024 12:42



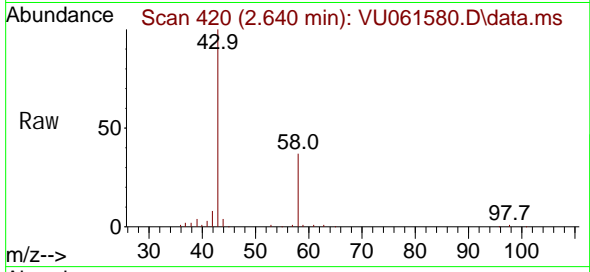
Tgt Ion: 96 Resp: 49243
 Ion Ratio Lower Upper
 96 100
 61 170.3 119.1 221.1
 63 154.8 89.4 166.0



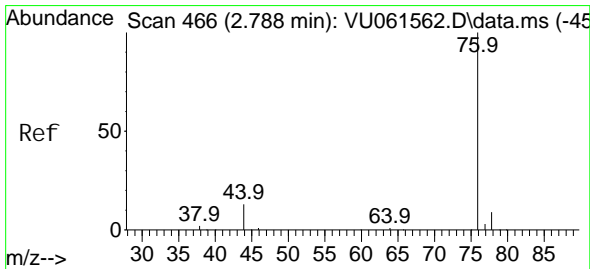
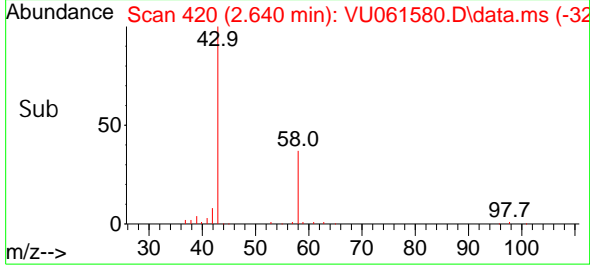
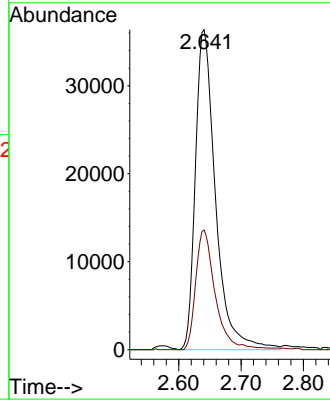


#13
 Acetone
 Concen: 49.351 ug/L
 RT: 2.640 min Scan# 41
 Delta R.T. -0.006 min
 Lab File: VU061580.D
 Acq: 11 Nov 2024 12:42

Instrument :
 MSVOA_U
 ClientSampleId :

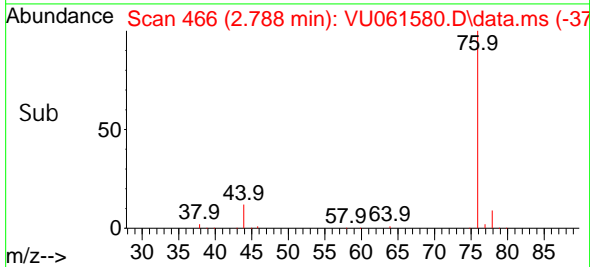
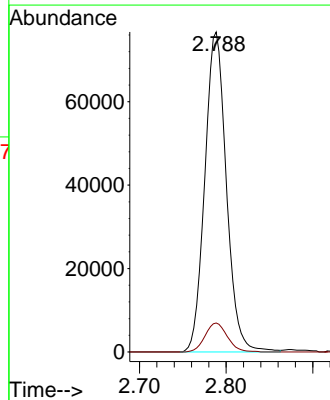
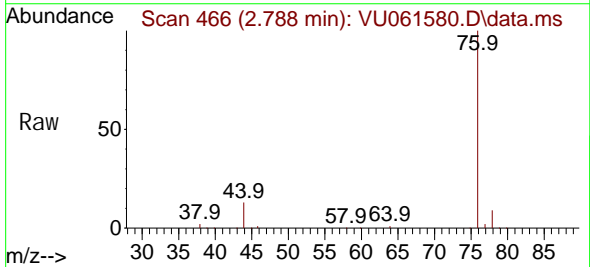


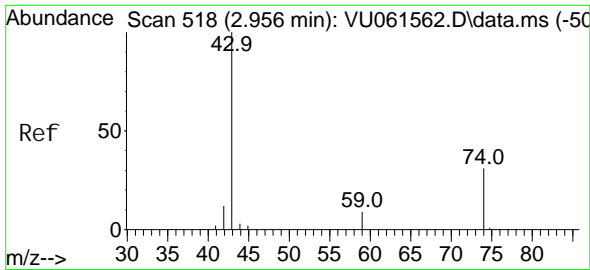
Tgt Ion: 43 Resp: 81676
 Ion Ratio Lower Upper
 43 100
 58 36.2 0.0 73.2



#14
 Carbon di sul fi de
 Concen: 3.551 ug/L
 RT: 2.788 min Scan# 466
 Delta R.T. 0.000 min
 Lab File: VU061580.D
 Acq: 11 Nov 2024 12:42

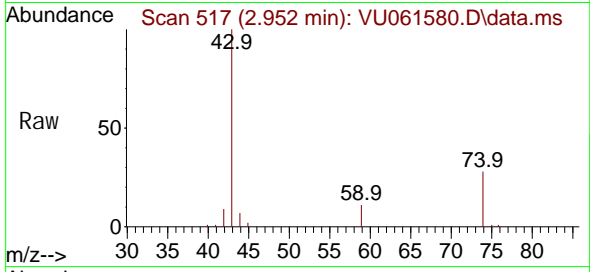
Tgt Ion: 76 Resp: 132705
 Ion Ratio Lower Upper
 76 100
 78 9.0 7.4 11.2



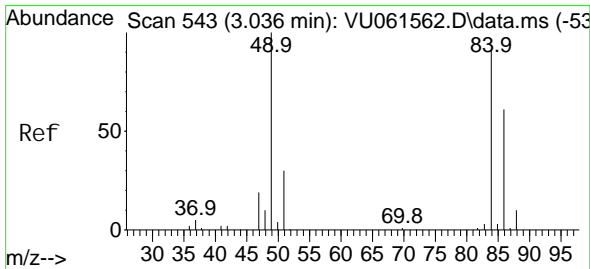
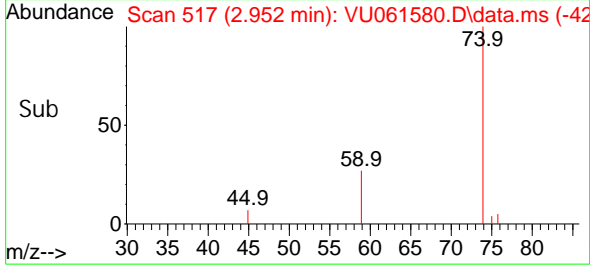
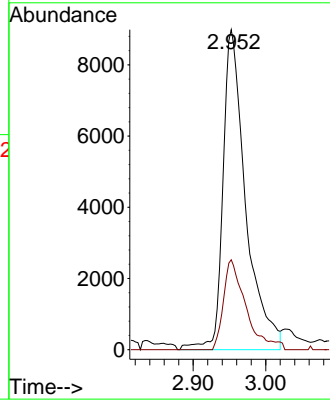


#15
Methyl Acetate
Concen: 4.775 ug/L
RT: 2.952 min Scan# 517
Delta R.T. -0.003 min
Lab File: VU061580.D
Acq: 11 Nov 2024 12:42

Instrument : MSVOA_U
ClientSampleId :

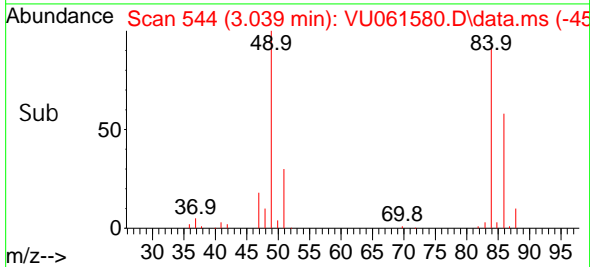
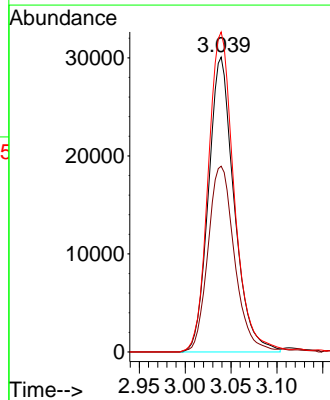
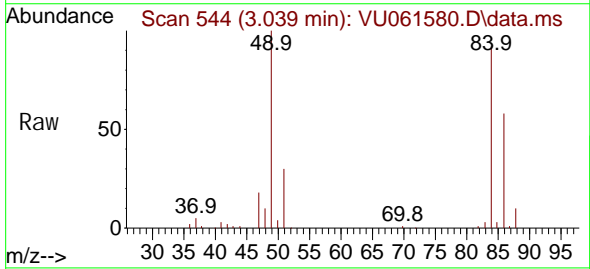


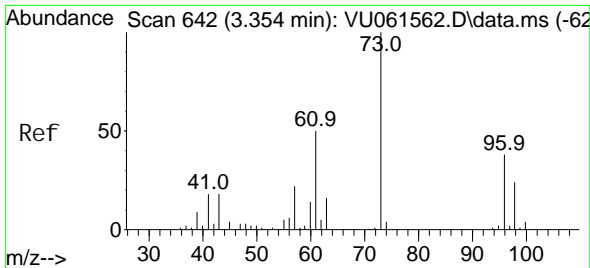
Tgt Ion: 43 Resp: 19569
Ion Ratio Lower Upper
43 100
74 27.6 22.2 33.4



#16
Methylene chloride
Concen: 4.440 ug/L
RT: 3.039 min Scan# 544
Delta R.T. 0.003 min
Lab File: VU061580.D
Acq: 11 Nov 2024 12:42

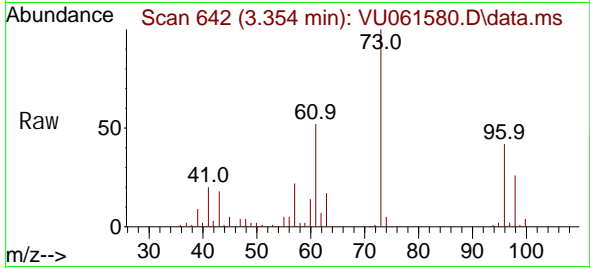
Tgt Ion: 84 Resp: 58607
Ion Ratio Lower Upper
84 100
86 63.0 43.5 80.7
49 108.5 75.7 140.7



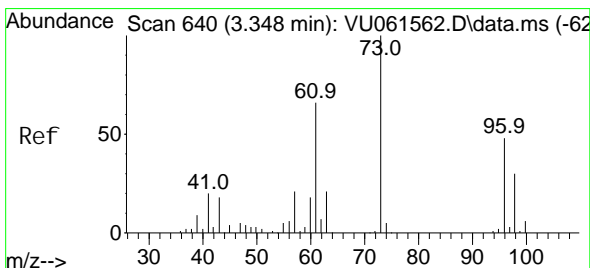
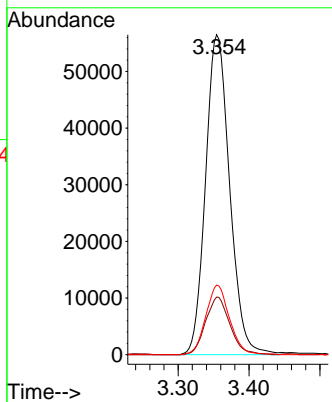
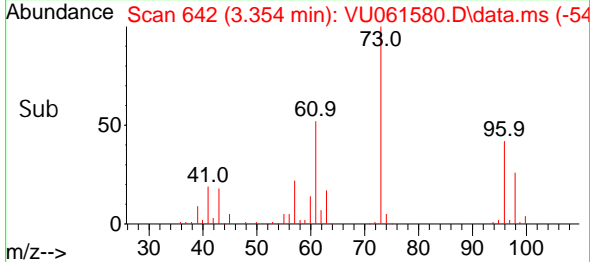


#17
 Methyl tert-butyl Ether
 Concen: 4.396 ug/L
 RT: 3.354 min Scan# 642
 Delta R.T. 0.000 min
 Lab File: VU061580.D
 Acq: 11 Nov 2024 12:42

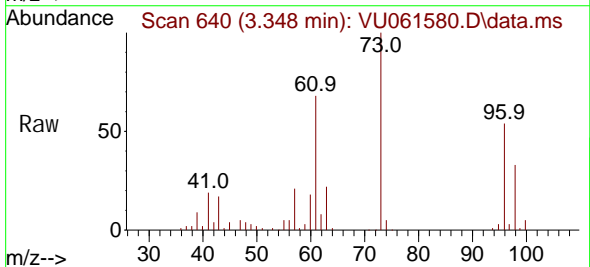
Instrument :
 MSVOA_U
 ClientSampleId :



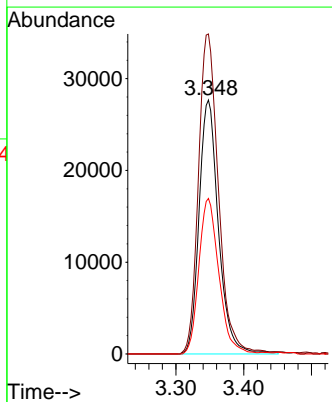
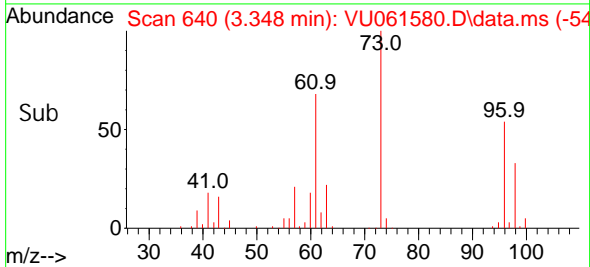
Tgt Ion: 73 Resp: 133465
 Ion Ratio Lower Upper
 73 100
 43 18.3 15.0 22.4
 57 21.3 17.0 25.6

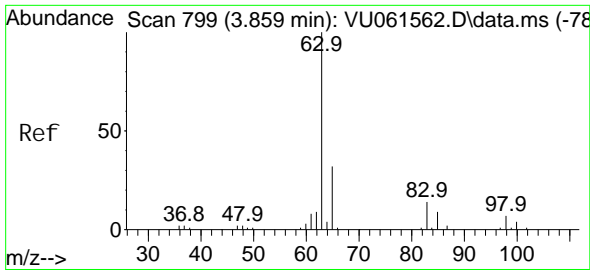


#18
 trans-1,2-Dichloroethene
 Concen: 4.453 ug/L
 RT: 3.348 min Scan# 640
 Delta R.T. 0.000 min
 Lab File: VU061580.D
 Acq: 11 Nov 2024 12:42



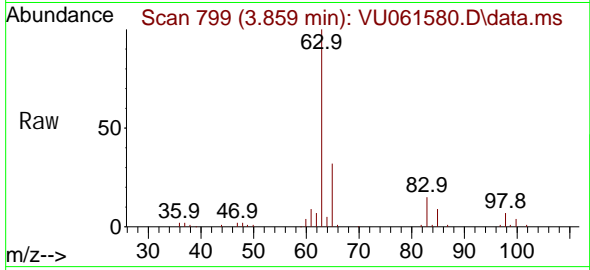
Tgt Ion: 96 Resp: 55152
 Ion Ratio Lower Upper
 96 100
 61 126.0 97.9 181.7
 98 61.2 46.2 85.8



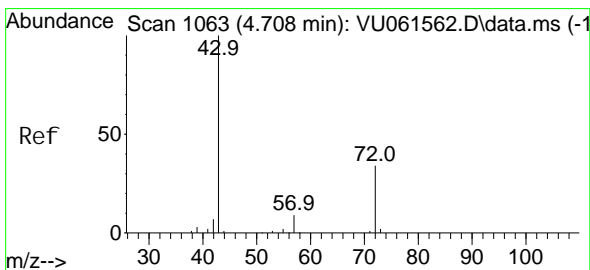
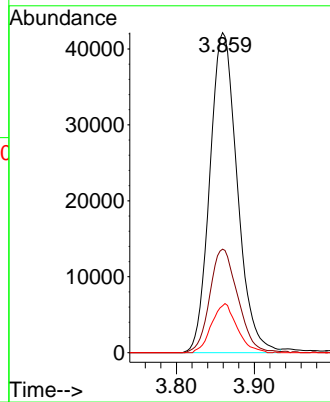
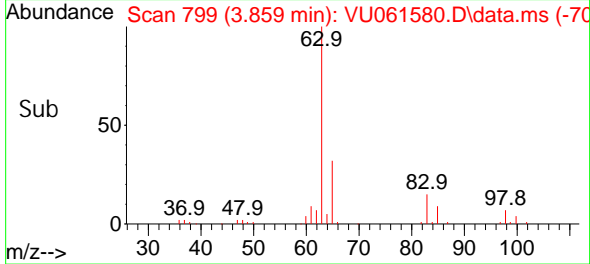


#19
 1,1-Dichloroethane
 Concen: 4.420 ug/L
 RT: 3.859 min Scan# 799
 Delta R.T. 0.000 min
 Lab File: VU061580.D
 Acq: 11 Nov 2024 12:42

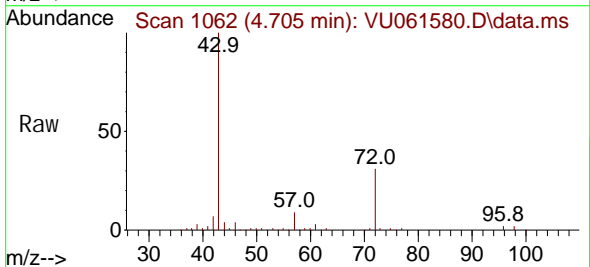
Instrument : MSVOA_U
 ClientSampleId :



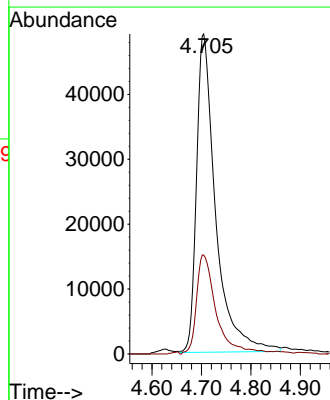
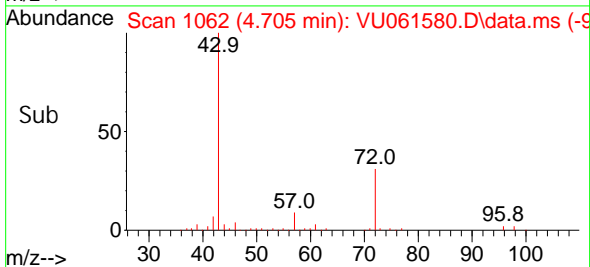
Tgt Ion: 63 Resp: 103260
 Ion Ratio Lower Upper
 63 100
 65 32.4 23.0 42.6
 83 14.7 9.7 17.9

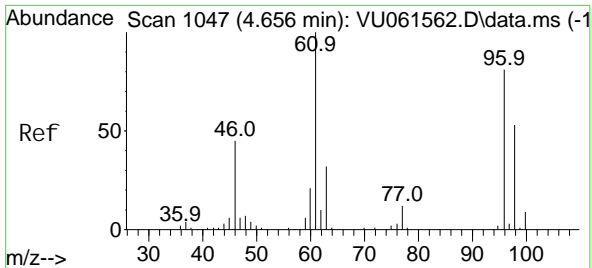


#21
 2-Butanone
 Concen: 50.317 ug/L
 RT: 4.705 min Scan# 1062
 Delta R.T. -0.003 min
 Lab File: VU061580.D
 Acq: 11 Nov 2024 12:42



Tgt Ion: 43 Resp: 132016
 Ion Ratio Lower Upper
 43 100
 72 30.8 15.9 47.6

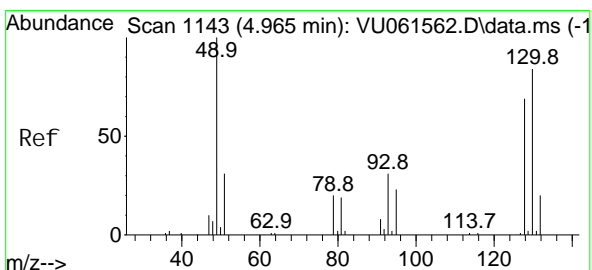
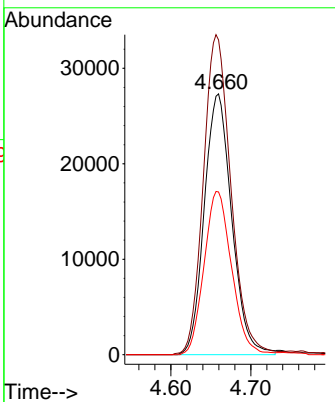
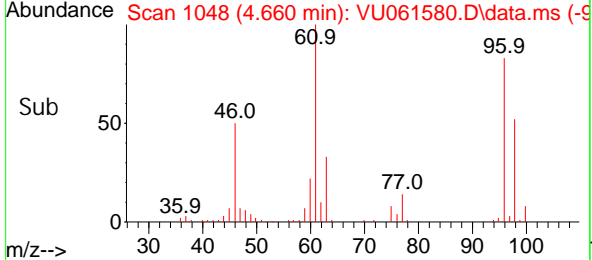
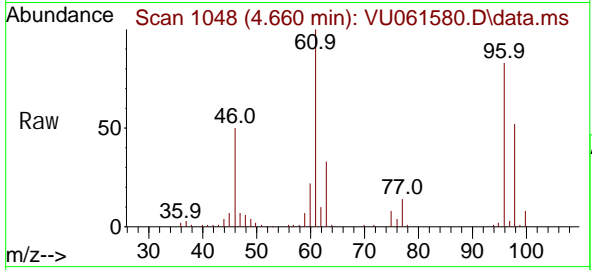




#22
 cis-1,2-Dichloroethene
 Concen: 4.609 ug/L
 RT: 4.660 min Scan# 1048
 Delta R.T. 0.003 min
 Lab File: VU061580.D
 Acq: 11 Nov 2024 12:42

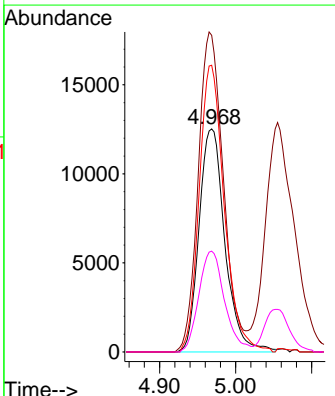
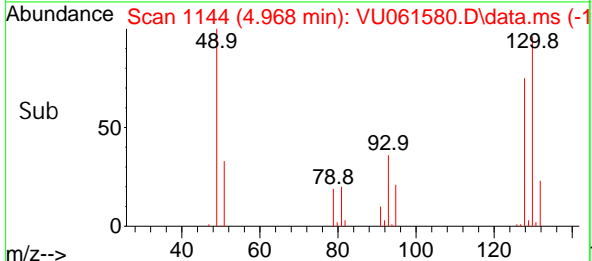
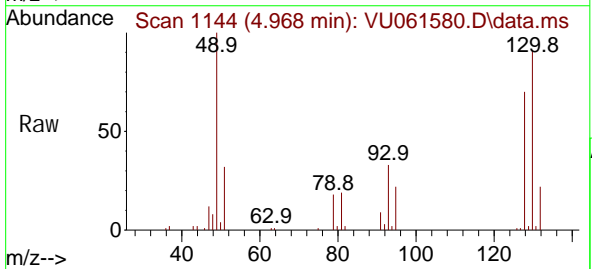
Instrument : MSVOA_U
 ClientSampleId :

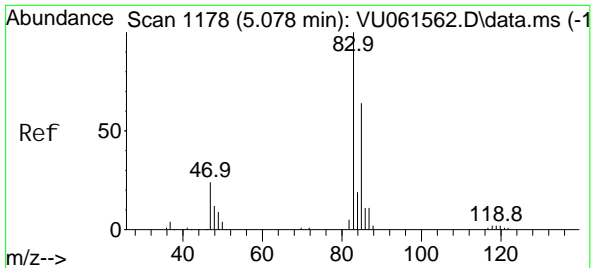
Tgt Ion	Resp	Lower	Upper
96	65208		
61	120.7	88.1	163.5
98	62.4	45.0	83.6



#23
 Bromochloromethane
 Concen: 4.968 ug/L
 RT: 4.968 min Scan# 1144
 Delta R.T. 0.003 min
 Lab File: VU061580.D
 Acq: 11 Nov 2024 12:42

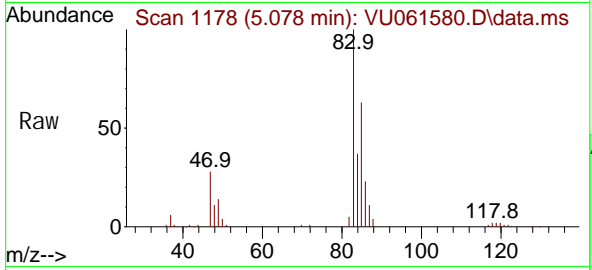
Tgt Ion	Resp	Lower	Upper
128	29573		
49	142.0	105.1	195.1
130	128.6	89.6	166.4
51	45.2	38.7	58.1



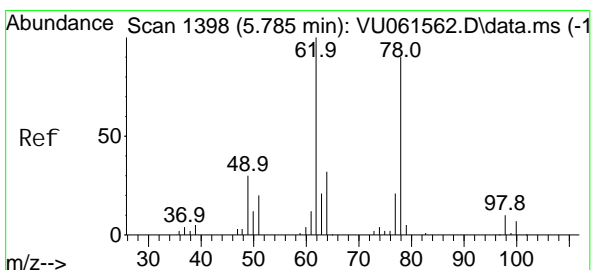
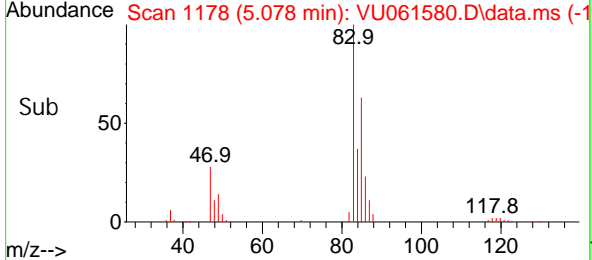
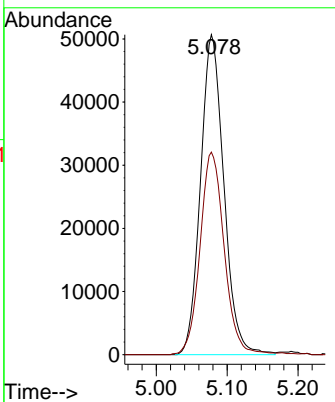


#25
 Chloroform
 Concen: 4.720 ug/L
 RT: 5.078 min Scan# 1178
 Delta R.T. 0.000 min
 Lab File: VU061580.D
 Acq: 11 Nov 2024 12:42

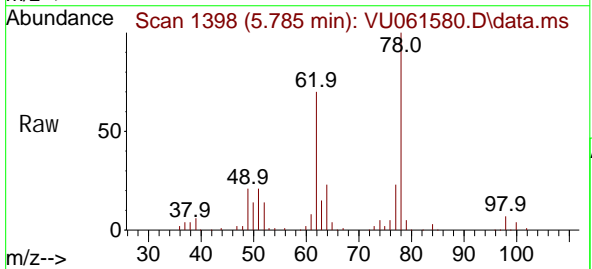
Instrument : MSVOA_U
 ClientSampleId :



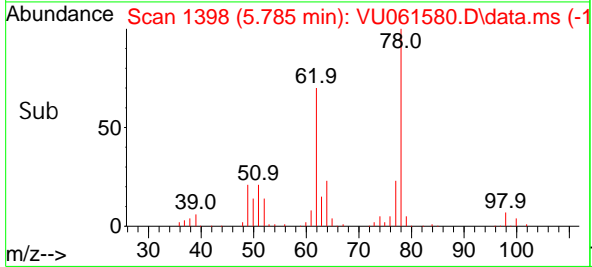
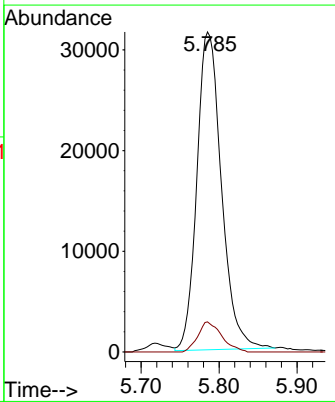
Tgt Ion: 83 Resp: 115930
 Ion Ratio Lower Upper
 83 100
 85 63.3 45.6 84.6

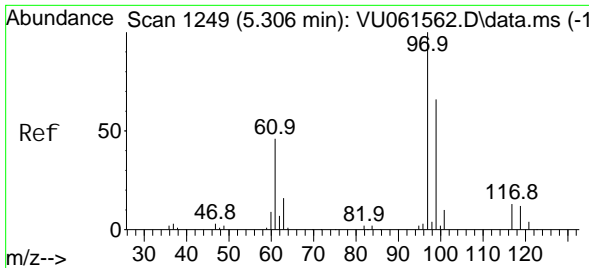


#27
 1,2-Di chl oroethane
 Concen: 4.461 ug/L
 RT: 5.785 min Scan# 1398
 Delta R.T. 0.000 min
 Lab File: VU061580.D
 Acq: 11 Nov 2024 12:42



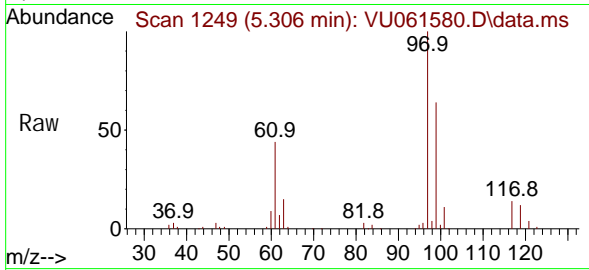
Tgt Ion: 62 Resp: 69239
 Ion Ratio Lower Upper
 62 100
 98 9.4 7.4 11.0



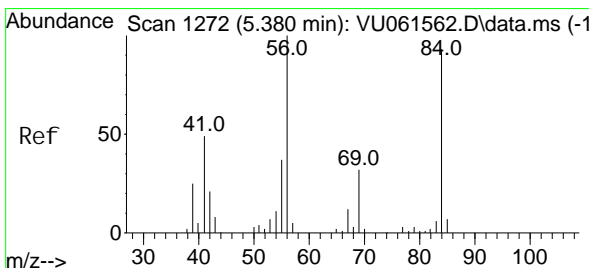
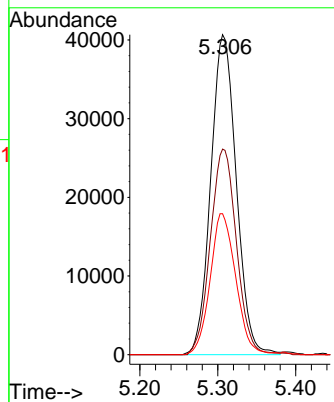
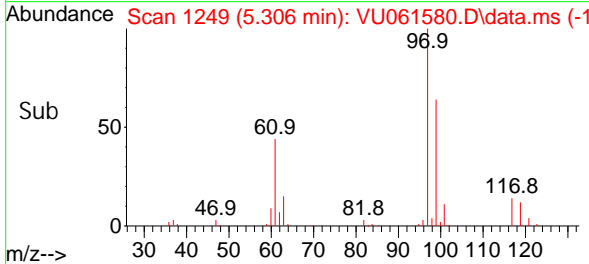


#29
 1,1,1-Trichloroethane
 Concen: 4.178 ug/L
 RT: 5.306 min Scan# 1249
 Delta R.T. 0.000 min
 Lab File: VU061580.D
 Acq: 11 Nov 2024 12:42

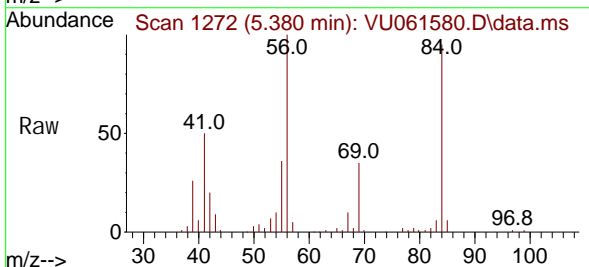
Instrument : MSVOA_U
 ClientSampleId :



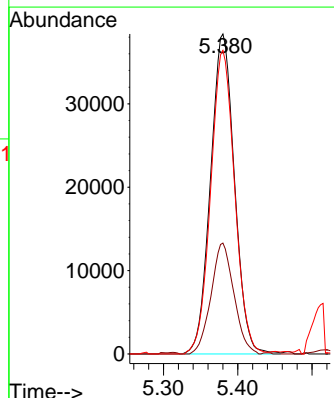
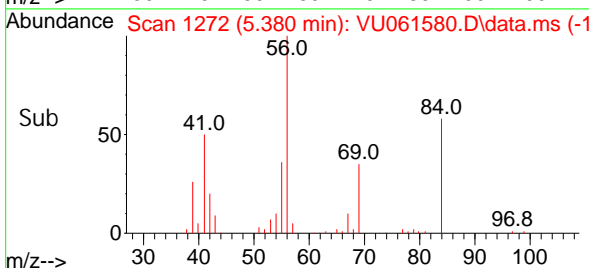
Tgt Ion: 97 Resp: 92663
 Ion Ratio Lower Upper
 97 100
 99 65.9 50.8 76.2
 61 44.1 36.1 54.1

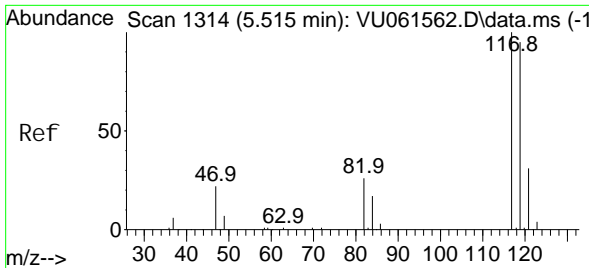


#30
 Cyclohexane
 Concen: 3.871 ug/L
 RT: 5.380 min Scan# 1272
 Delta R.T. 0.000 min
 Lab File: VU061580.D
 Acq: 11 Nov 2024 12:42



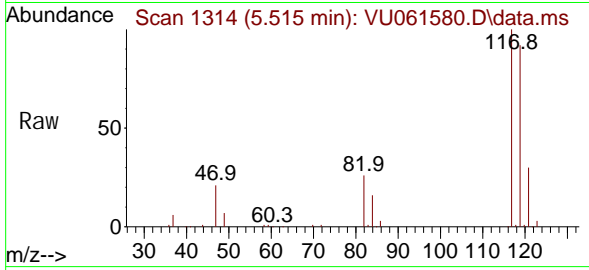
Tgt Ion: 56 Resp: 86112
 Ion Ratio Lower Upper
 56 100
 69 33.0 25.8 38.6
 84 94.7 73.9 110.9



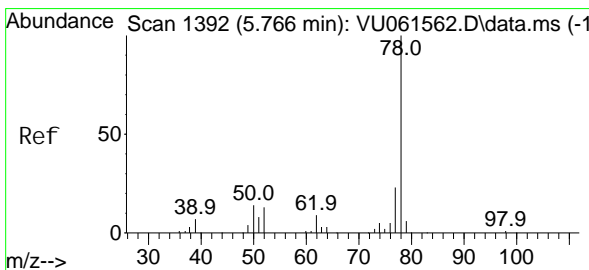
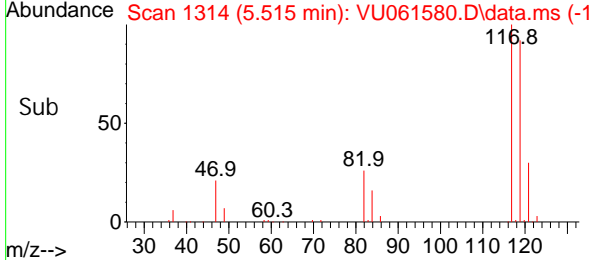
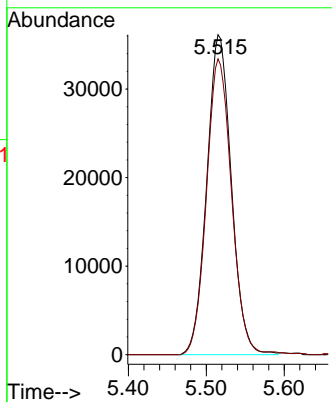


#31
 Carbon tetrachloride
 Concen: 4.174 ug/L
 RT: 5.515 min Scan# 111
 Delta R.T. 0.000 min
 Lab File: VU061580.D
 Acq: 11 Nov 2024 12:42

Instrument : MSVOA_U
 ClientSampleId :

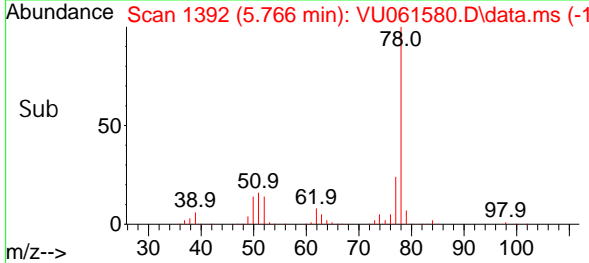
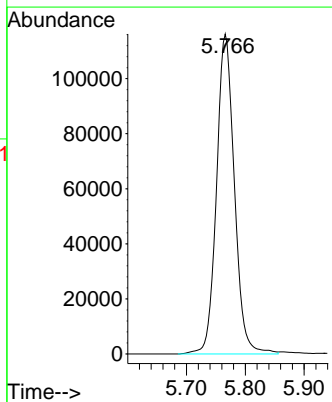
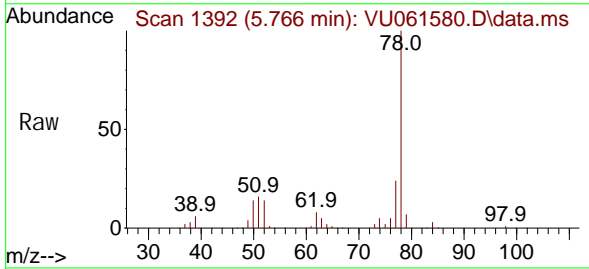


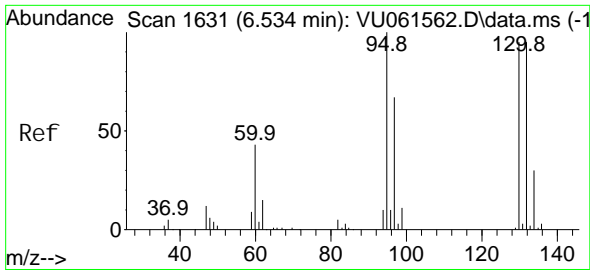
Tgt Ion: 117 Resp: 79223
 Ion Ratio Lower Upper
 117 100
 119 94.1 75.5 113.3



#33
 Benzene
 Concen: 4.381 ug/L
 RT: 5.766 min Scan# 1392
 Delta R.T. 0.000 min
 Lab File: VU061580.D
 Acq: 11 Nov 2024 12:42

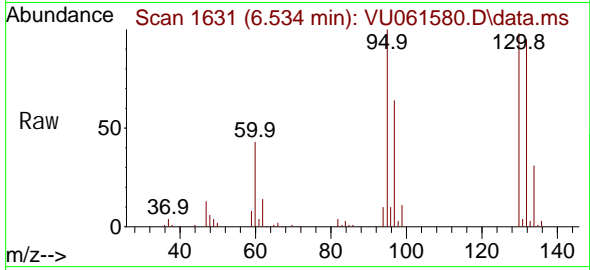
Tgt Ion: 78 Resp: 245412



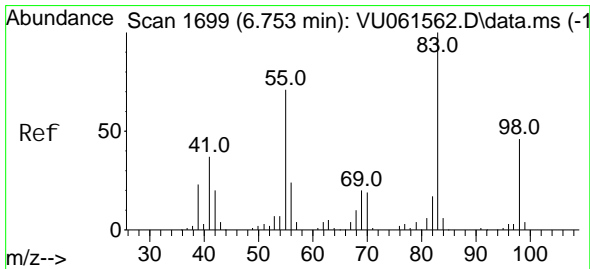
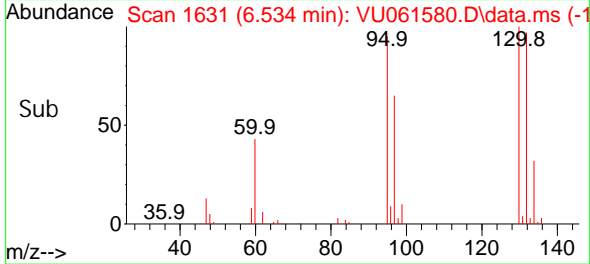
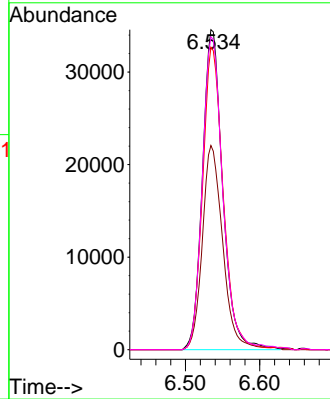


#34
 Trichloroethene
 Concen: 4.313 ug/L
 RT: 6.534 min Scan# 1631
 Delta R.T. 0.000 min
 Lab File: VU061580.D
 Acq: 11 Nov 2024 12:42

Instrument :
 MSVOA_U
 ClientSampleId :

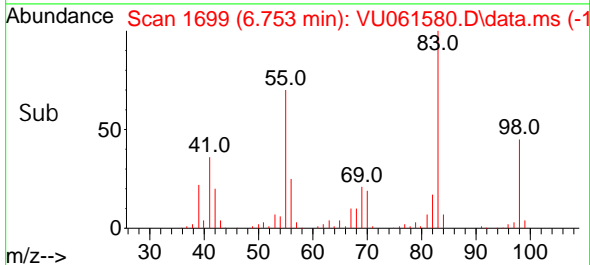
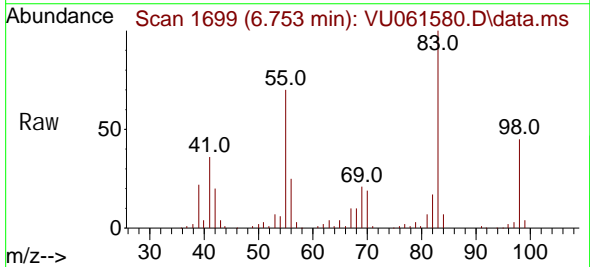
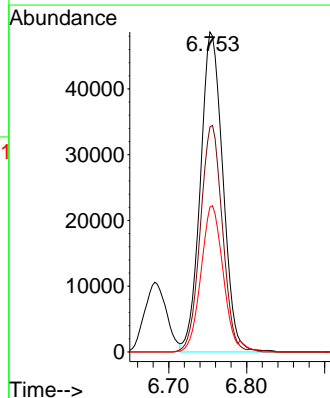


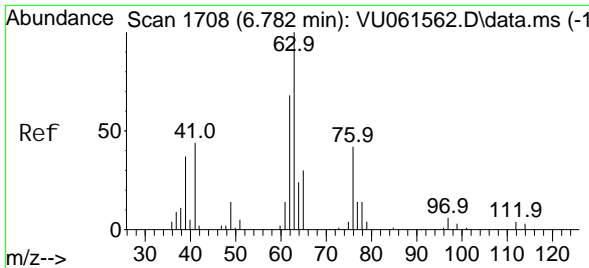
Tgt Ion: 95 Resp: 65717
 Ion Ratio Lower Upper
 95 100
 97 63.8 46.1 85.7
 132 94.6 66.1 122.7
 130 97.8 69.0 128.2



#35
 Methyl cycl ohexane
 Concen: 4.021 ug/L
 RT: 6.753 min Scan# 1699
 Delta R.T. 0.000 min
 Lab File: VU061580.D
 Acq: 11 Nov 2024 12:42

Tgt Ion: 83 Resp: 97535
 Ion Ratio Lower Upper
 83 100
 55 69.2 55.9 83.9
 98 45.5 35.9 53.9

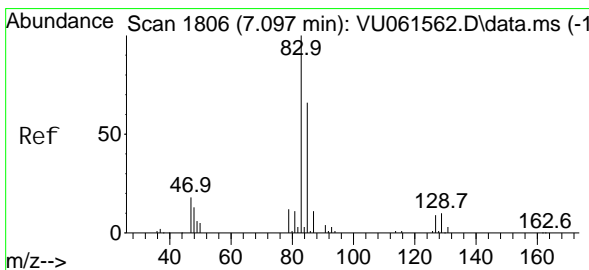
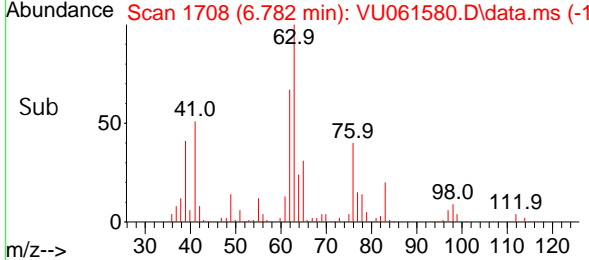
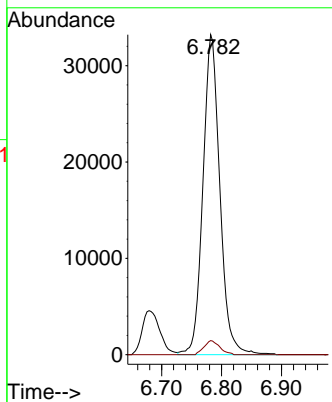
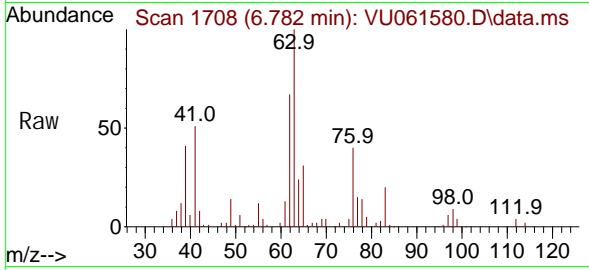




#37
 1, 2-Di chl oropropane
 Concen: 4.602 ug/L
 RT: 6.782 min Scan# 1708
 Delta R.T. 0.000 min
 Lab File: VU061580.D
 Acq: 11 Nov 2024 12: 42

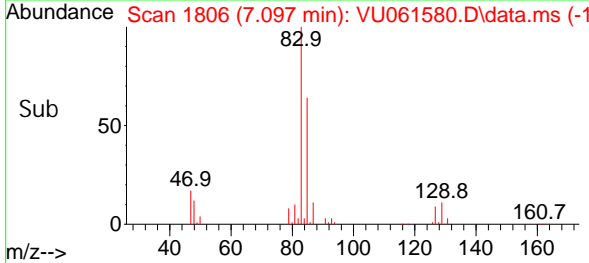
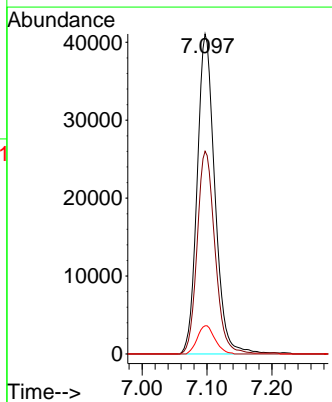
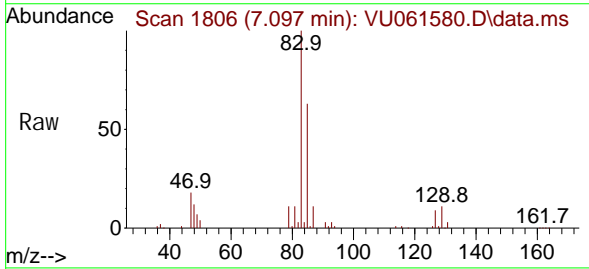
Instrument : MSVOA_U
 ClientSampleId :

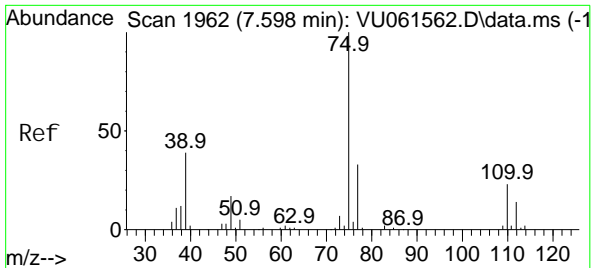
Tgt Ion: 63 Resp: 65348
 Ion Ratio Lower Upper
 63 100
 112 4.1 3.0 4.4



#38
 Bromodi chl oromethane
 Concen: 4.337 ug/L
 RT: 7.097 min Scan# 1806
 Delta R.T. 0.000 min
 Lab File: VU061580.D
 Acq: 11 Nov 2024 12: 42

Tgt Ion: 83 Resp: 77933
 Ion Ratio Lower Upper
 83 100
 85 63.3 43.8 81.4
 127 8.8 7.4 11.0

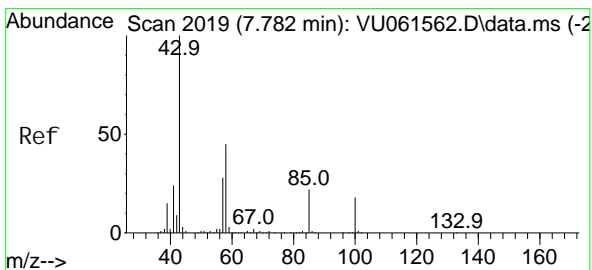
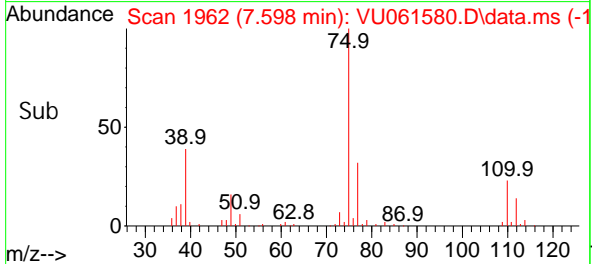
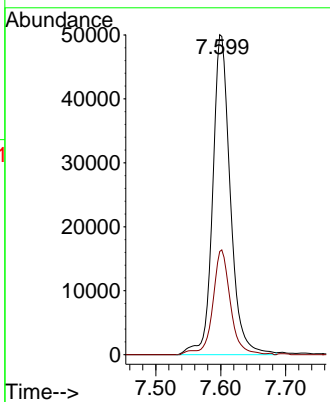
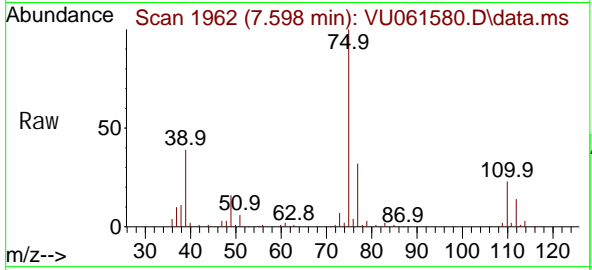




#39
 cis-1,3-Dichloropropene
 Concen: 4.295 ug/L
 RT: 7.598 min Scan# 1962
 Delta R.T. 0.000 min
 Lab File: VU061580.D
 Acq: 11 Nov 2024 12:42

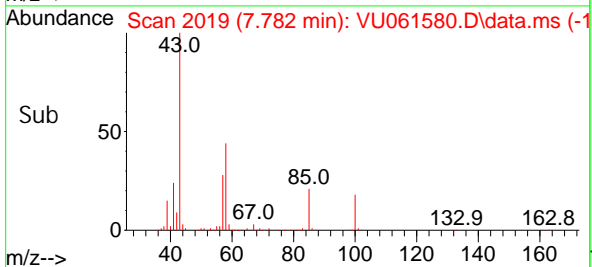
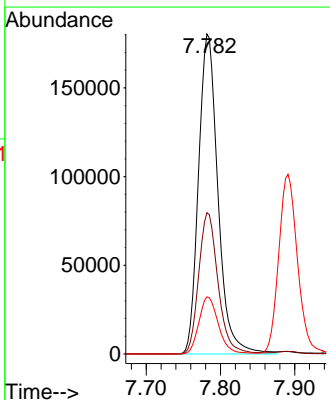
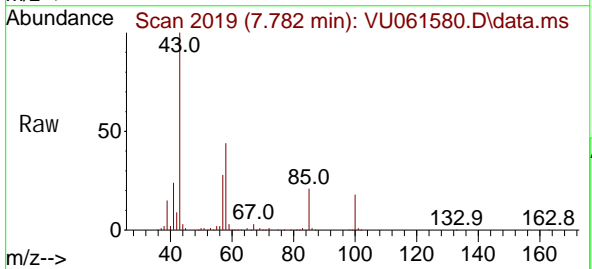
Instrument : MSVOA_U
 ClientSampleId :

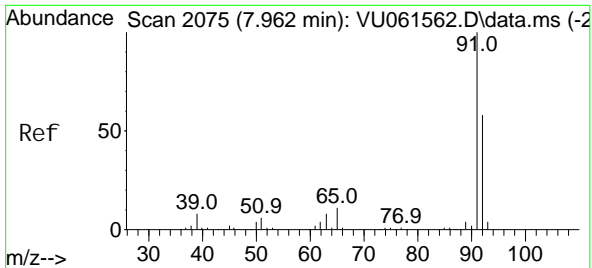
Tgt Ion: 75 Resp: 94185
 Ion Ratio Lower Upper
 75 100
 77 32.3 22.5 41.7



#40
 4-Methyl-2-pentanone
 Concen: 46.367 ug/L
 RT: 7.782 min Scan# 2019
 Delta R.T. 0.000 min
 Lab File: VU061580.D
 Acq: 11 Nov 2024 12:42

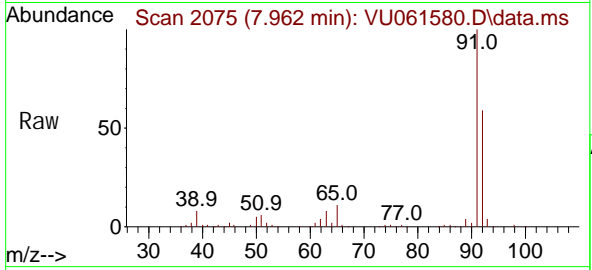
Tgt Ion: 43 Resp: 327675
 Ion Ratio Lower Upper
 43 100
 58 44.1 35.1 52.7
 100 17.9 14.0 21.0



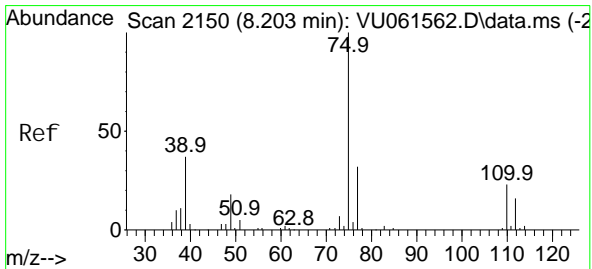
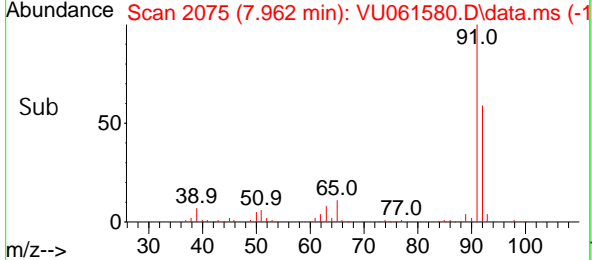
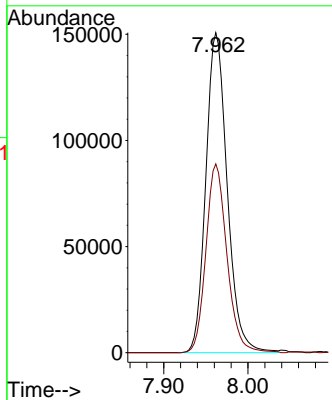


#42
 Tol uene
 Concen: 4.373 ug/L
 RT: 7.962 min Scan# 2075
 Delta R.T. 0.000 min
 Lab File: VU061580.D
 Acq: 11 Nov 2024 12:42

Instrument : MSVOA_U
 ClientSampleId :

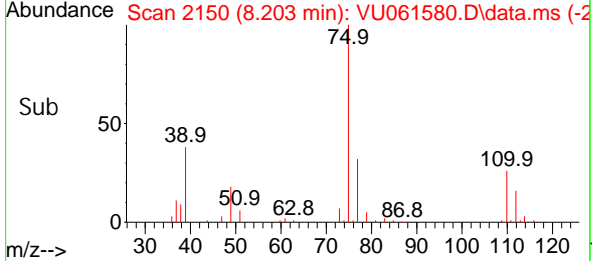
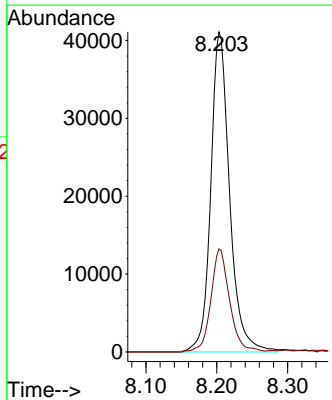
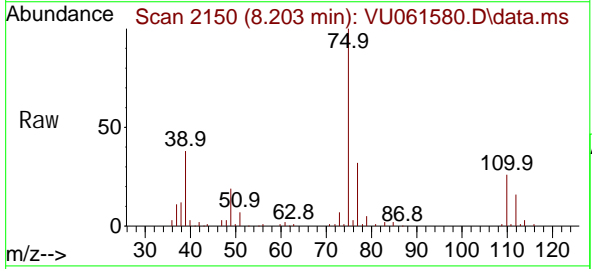


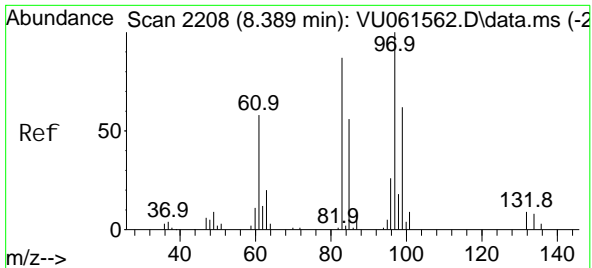
Tgt Ion: 91 Resp: 266029
 Ion Ratio Lower Upper
 91 100
 92 59.0 40.3 74.8



#44
 trans-1,3-Di chl oroprene
 Concen: 4.244 ug/L
 RT: 8.203 min Scan# 2150
 Delta R.T. 0.000 min
 Lab File: VU061580.D
 Acq: 11 Nov 2024 12:42

Tgt Ion: 75 Resp: 75844
 Ion Ratio Lower Upper
 75 100
 77 32.2 22.0 40.8



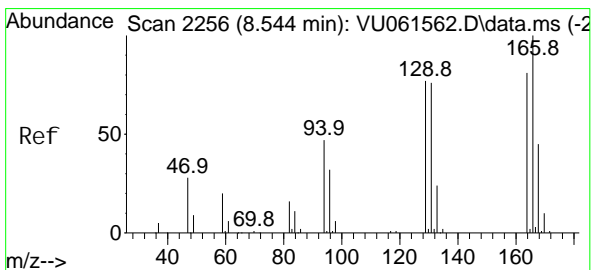
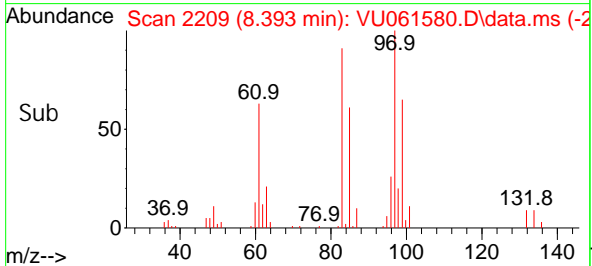
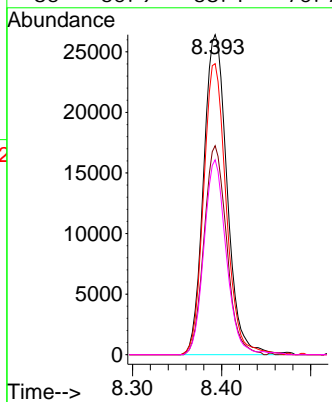
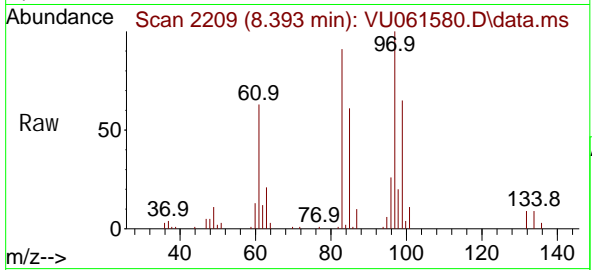


#45
 1,1,2-Trichloroethane
 Concen: 4.733 ug/L
 RT: 8.393 min Scan# 2209
 Delta R.T. 0.003 min
 Lab File: VU061580.D
 Acq: 11 Nov 2024 12:42

Instrument : MSVOA_U
 ClientSampleId :

Tgt Ion: 97 Resp: 48367

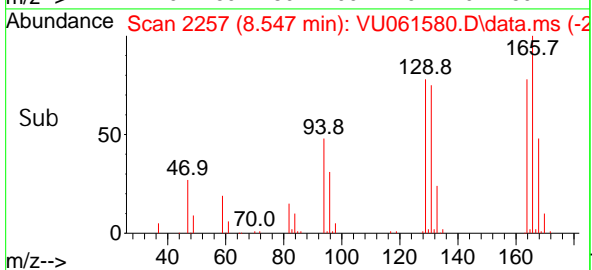
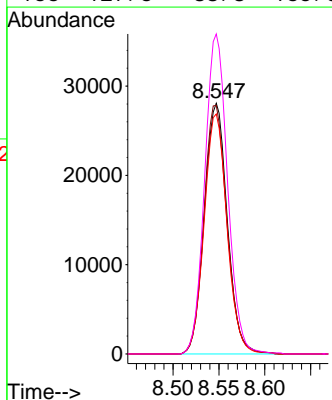
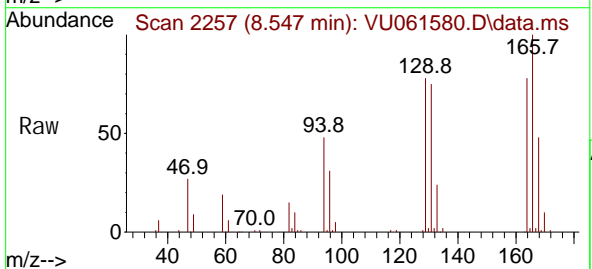
Ion	Ratio	Lower	Upper
97	100		
99	65.3	44.1	81.9
83	91.0	61.2	113.6
85	60.9	38.1	70.7

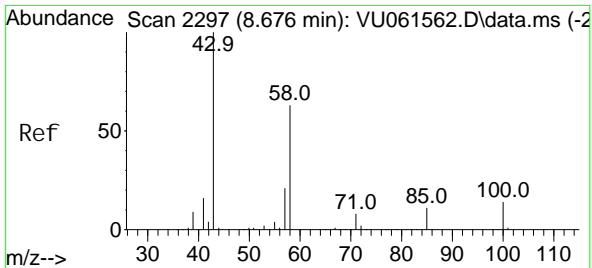


#47
 Tetrachloroethene
 Concen: 4.600 ug/L
 RT: 8.547 min Scan# 2257
 Delta R.T. 0.003 min
 Lab File: VU061580.D
 Acq: 11 Nov 2024 12:42

Tgt Ion: 164 Resp: 48963

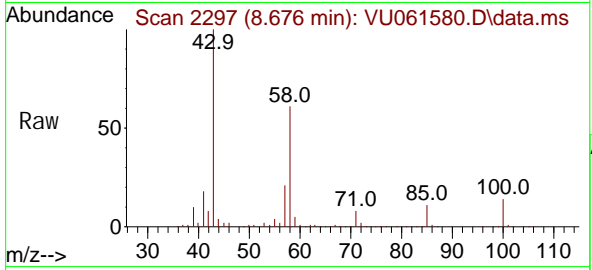
Ion	Ratio	Lower	Upper
164	100		
129	99.1	69.9	129.7
131	95.7	68.3	126.8
166	127.6	88.8	165.0





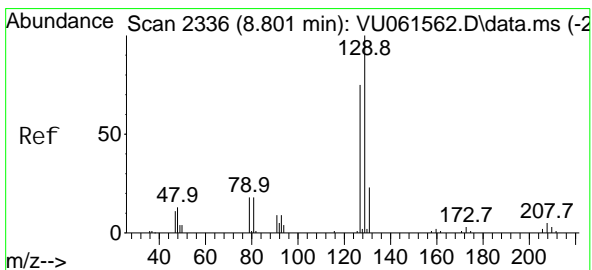
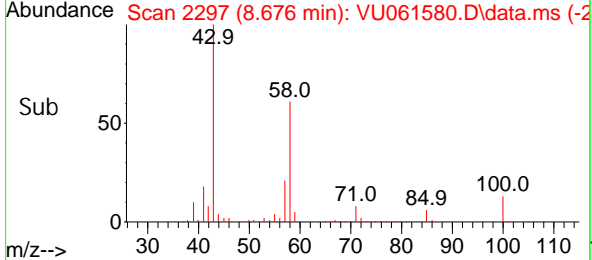
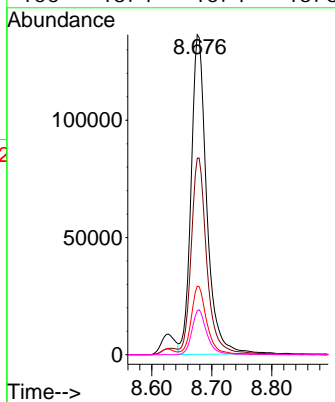
#48
 2-Hexanone
 Concen: 49.416 ug/L
 RT: 8.676 min Scan# 2297
 Delta R.T. 0.000 min
 Lab File: VU061580.D
 Acq: 11 Nov 2024 12:42

Instrument : MSVOA_U
 ClientSampleId :

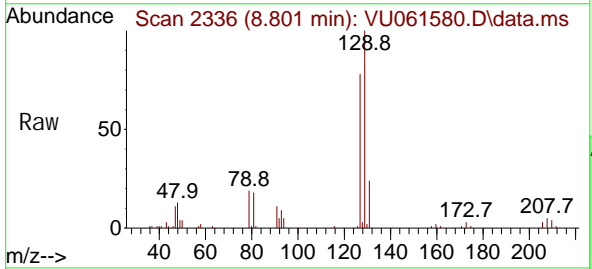


Tgt Ion: 43 Resp: 246952

Ion	Ratio	Lower	Upper
43	100		
58	61.0	48.6	72.8
57	20.6	17.0	25.6
100	13.4	10.4	15.6

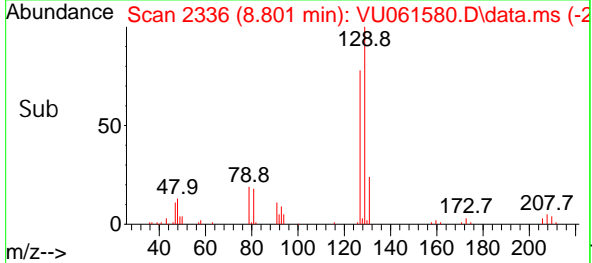
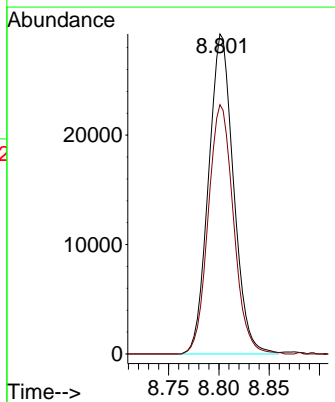


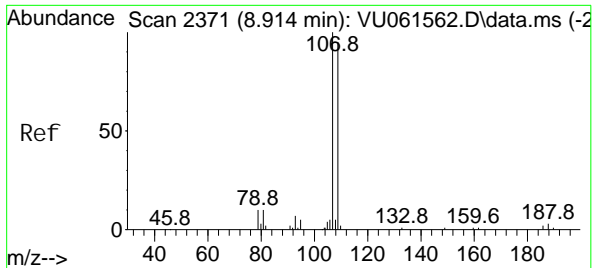
#49
 Di bromochloromethane
 Concen: 4.368 ug/L
 RT: 8.801 min Scan# 2336
 Delta R.T. 0.000 min
 Lab File: VU061580.D
 Acq: 11 Nov 2024 12:42



Tgt Ion: 129 Resp: 50628

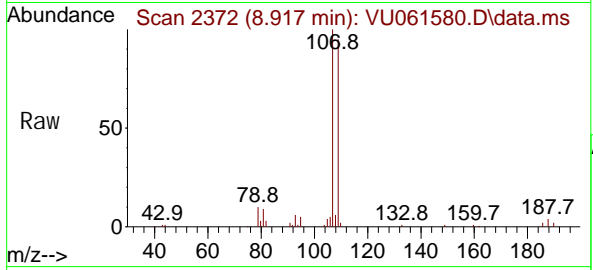
Ion	Ratio	Lower	Upper
129	100		
127	77.9	51.8	96.2



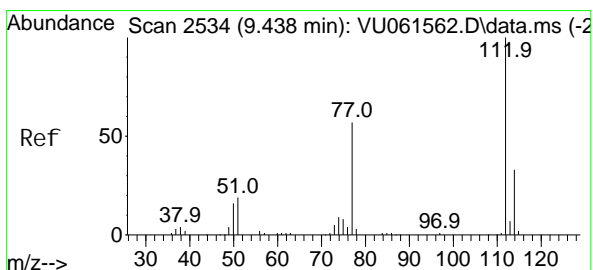
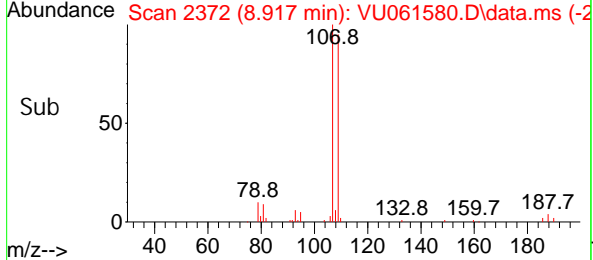
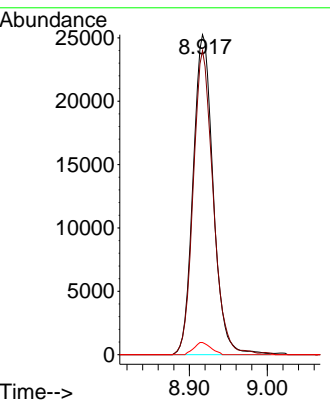


#50
 1, 2-Di bromoethane
 Concen: 4.549 ug/L
 RT: 8.917 min Scan# 21
 Delta R.T. 0.003 min
 Lab File: VU061580.D
 Acq: 11 Nov 2024 12:42

Instrument : MSVOA_U
 ClientSampleId :

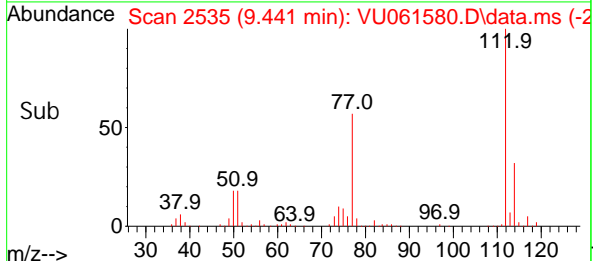
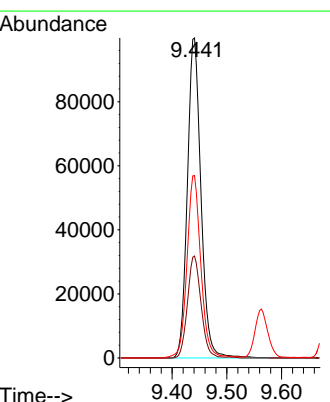
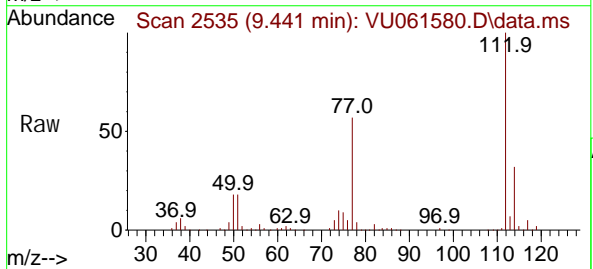


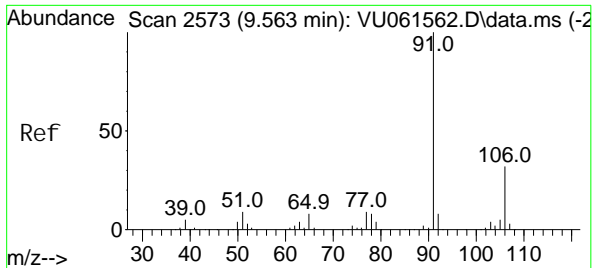
Tgt Ion: 107 Resp: 45156
 Ion Ratio Lower Upper
 107 100
 109 95.0 63.4 117.8
 188 3.8 2.6 3.8



#51
 Chlorobenzene
 Concen: 4.475 ug/L
 RT: 9.441 min Scan# 2535
 Delta R.T. 0.003 min
 Lab File: VU061580.D
 Acq: 11 Nov 2024 12:42

Tgt Ion: 112 Resp: 172092
 Ion Ratio Lower Upper
 112 100
 114 31.9 22.9 42.5
 77 57.0 47.1 70.7

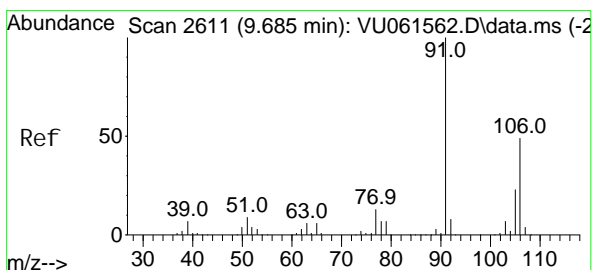
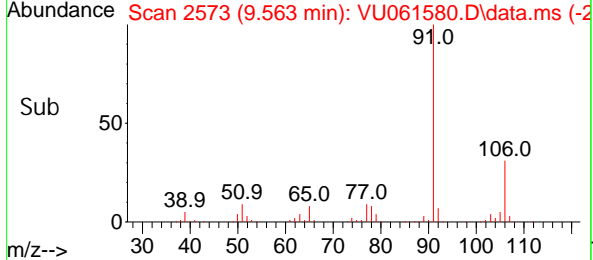
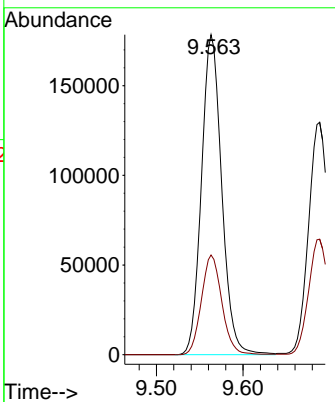
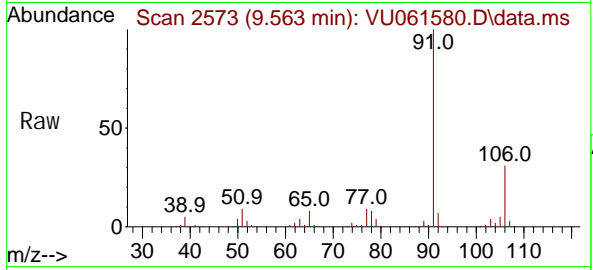




#52
 Ethyl benzene
 Concen: 4.331 ug/L
 RT: 9.563 min Scan# 2573
 Delta R.T. 0.000 min
 Lab File: VU061580.D
 Acq: 11 Nov 2024 12:42

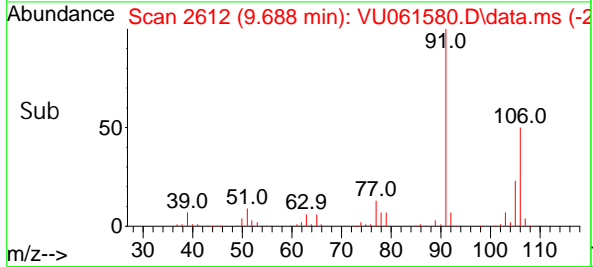
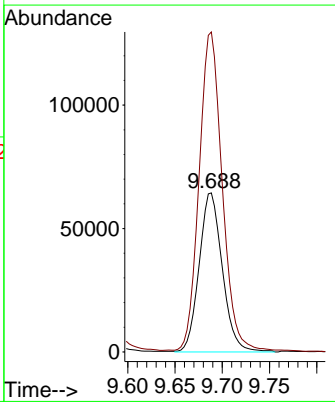
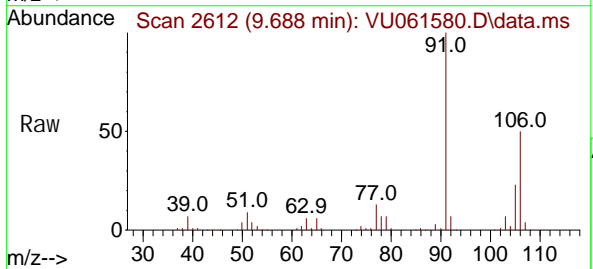
Instrument : MSVOA_U
 ClientSampleId :

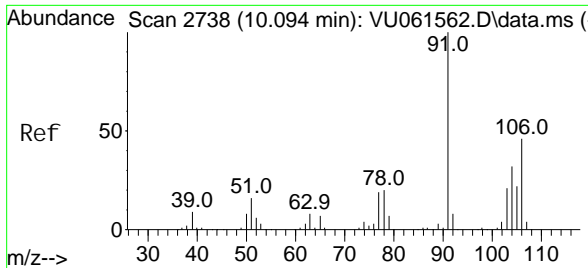
Tgt Ion: 91 Resp: 289784
 Ion Ratio Lower Upper
 91 100
 106 31.2 22.0 41.0



#53
 m, p-Xyl ene
 Concen: 4.316 ug/L
 RT: 9.688 min Scan# 2612
 Delta R.T. 0.003 min
 Lab File: VU061580.D
 Acq: 11 Nov 2024 12:42

Tgt Ion: 106 Resp: 110017
 Ion Ratio Lower Upper
 106 100
 91 201.2 145.7 270.7

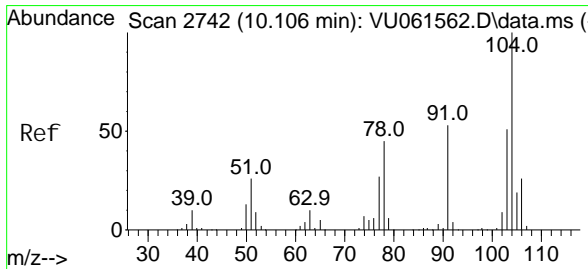
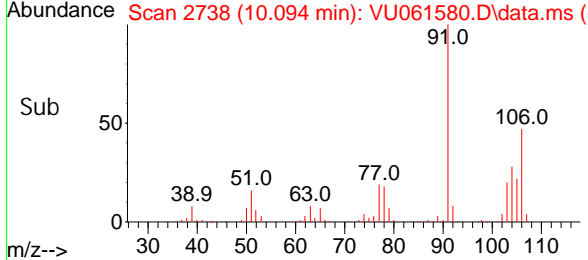
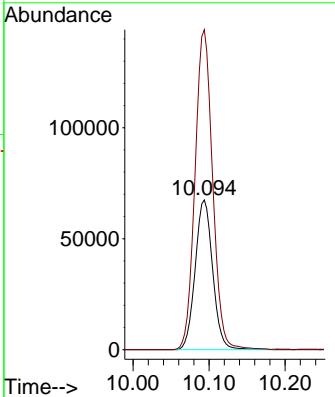
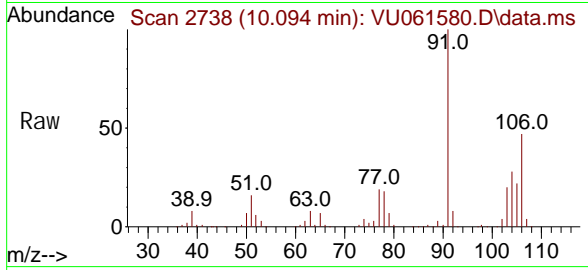




#54
 o-Xyl ene
 Concen: 4.289 ug/L
 RT: 10.094 min Scan# 2738
 Delta R.T. 0.000 min
 Lab File: VU061580.D
 Acq: 11 Nov 2024 12:42

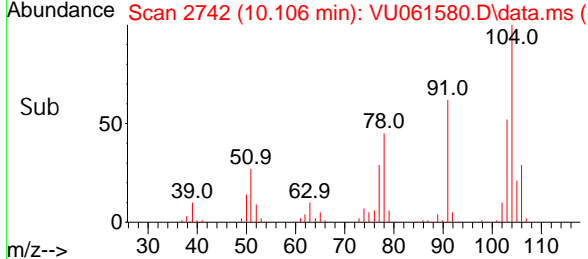
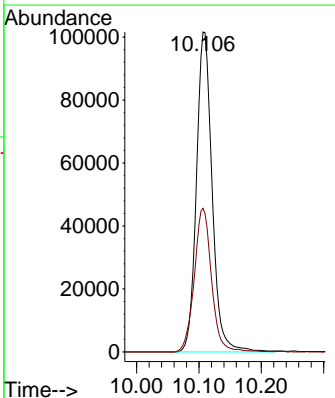
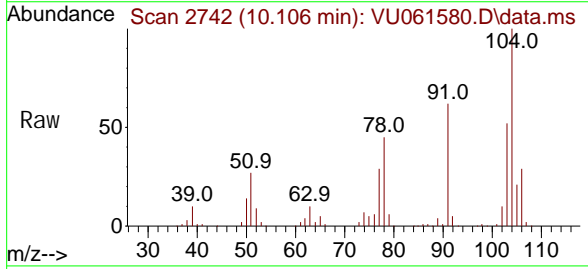
Instrument : MSVOA_U
 ClientSampleId :

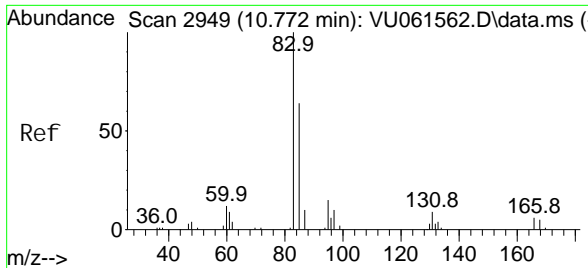
Tgt Ion: 106 Resp: 107911
 Ion Ratio Lower Upper
 106 100
 91 213.8 148.8 276.4



#55
 Styrene
 Concen: 4.420 ug/L
 RT: 10.106 min Scan# 2742
 Delta R.T. 0.000 min
 Lab File: VU061580.D
 Acq: 11 Nov 2024 12:42

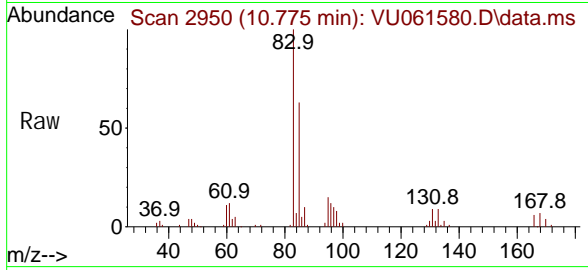
Tgt Ion: 104 Resp: 178287
 Ion Ratio Lower Upper
 104 100
 78 44.9 32.3 59.9



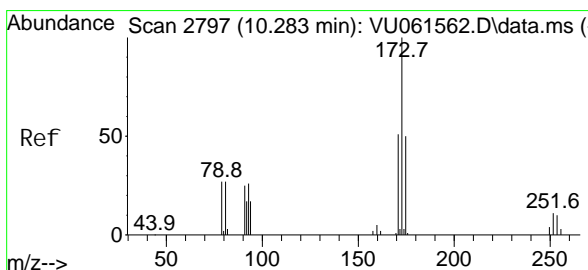
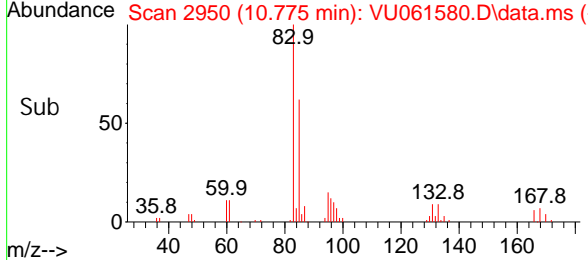
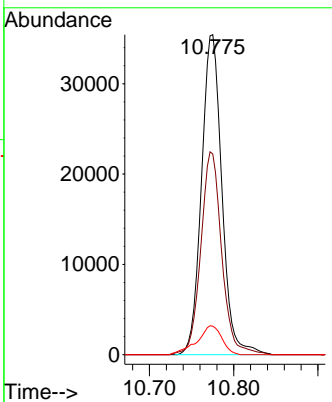


#57
 1, 1, 2-Tetrachloroethane
 Concen: 4.852 ug/L
 RT: 10.775 min Scan# 2949
 Delta R.T. 0.003 min
 Lab File: VU061580.D
 Acq: 11 Nov 2024 12: 42

Instrument : MSVOA_U
 ClientSampleId :

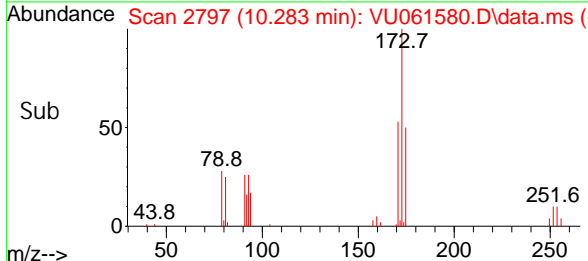
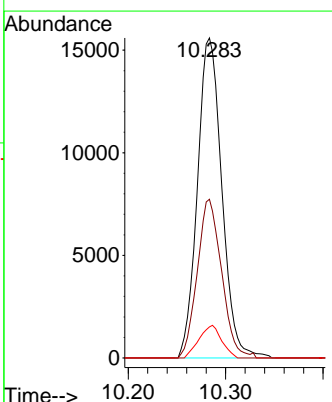
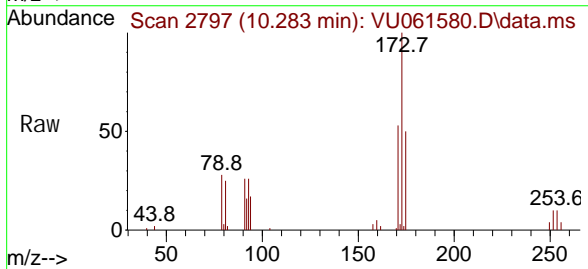


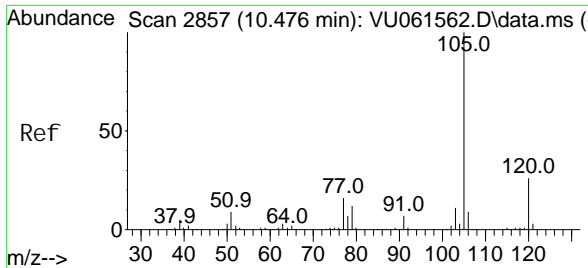
Tgt Ion: 83 Resp: 59739
 Ion Ratio Lower Upper
 83 100
 85 62.7 45.3 84.1
 131 8.9 7.6 11.4



#59
 Bromoform
 Concen: 4.094 ug/L
 RT: 10.283 min Scan# 2797
 Delta R.T. 0.000 min
 Lab File: VU061580.D
 Acq: 11 Nov 2024 12: 42

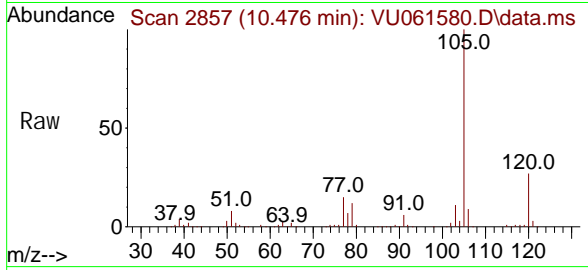
Tgt Ion: 173 Resp: 27157
 Ion Ratio Lower Upper
 173 100
 175 49.3 39.0 58.4
 254 9.4 6.8 10.2



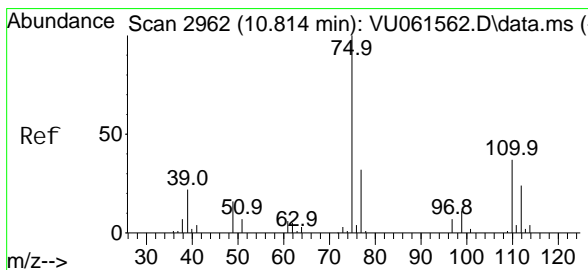
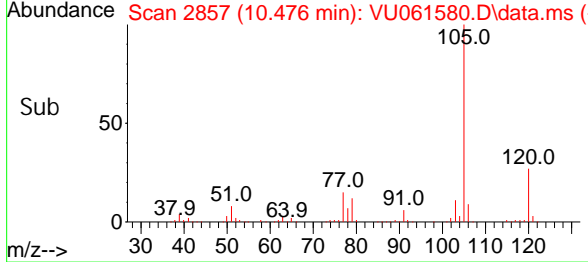
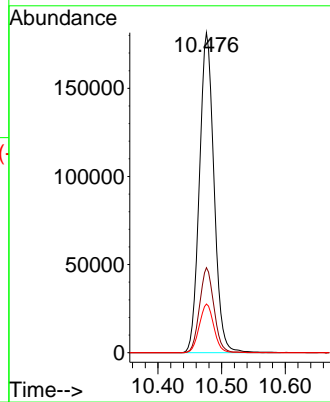


#60
 Isopropyl benzene
 Concen: 4.217 ug/L
 RT: 10.476 min Scan# 2857
 Delta R.T. 0.000 min
 Lab File: VU061580.D
 Acq: 11 Nov 2024 12:42

Instrument : MSVOA_U
 ClientSampleId :

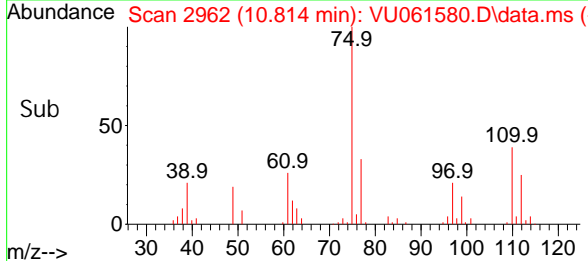
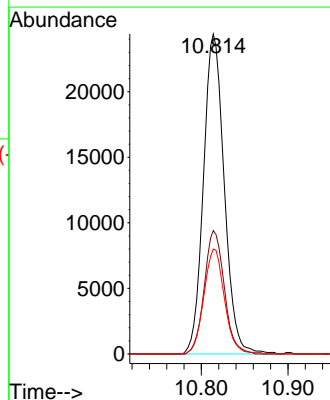
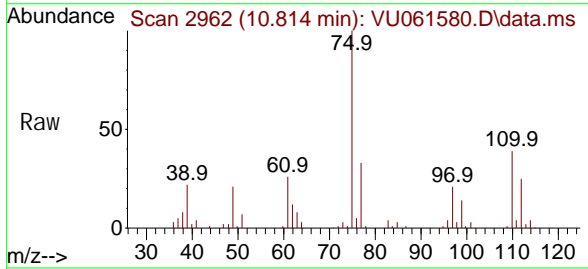


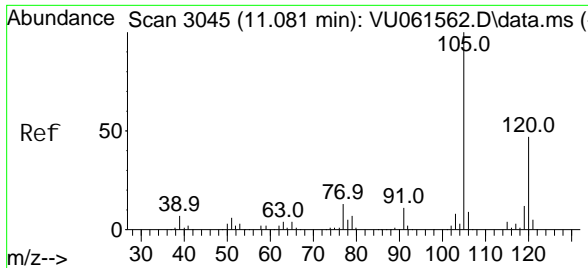
Tgt Ion: 105 Resp: 288741
 Ion Ratio Lower Upper
 105 100
 120 26.3 21.2 31.8
 77 15.2 12.6 19.0



#61
 1,2,3-Trichloropropane
 Concen: 4.556 ug/L
 RT: 10.814 min Scan# 2962
 Delta R.T. 0.000 min
 Lab File: VU061580.D
 Acq: 11 Nov 2024 12:42

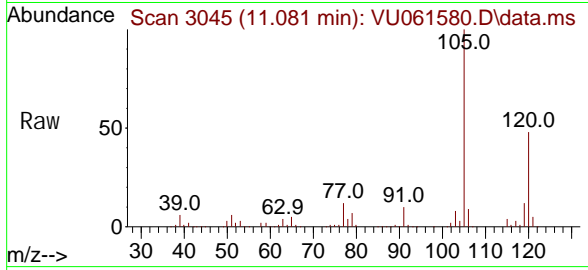
Tgt Ion: 75 Resp: 40678
 Ion Ratio Lower Upper
 75 100
 110 37.0 28.8 43.2
 77 32.6 25.7 38.5



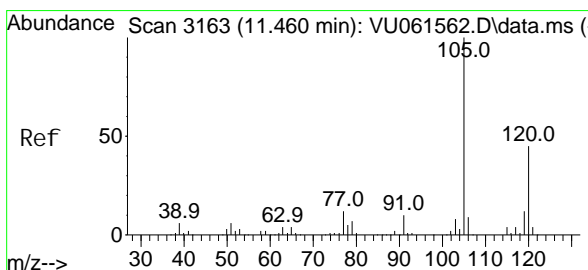
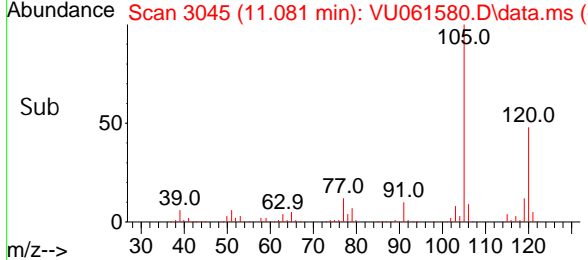
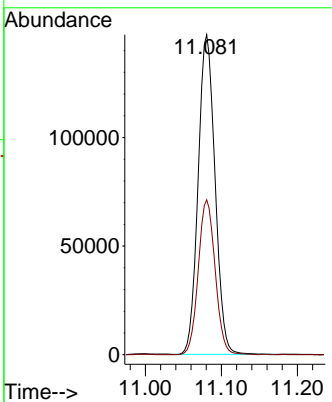


#62
 1, 3, 5-Tri methyl benzene
 Concen: 4.079 ug/L
 RT: 11.081 min Scan# 3045
 Delta R.T. 0.000 min
 Lab File: VU061580.D
 Acq: 11 Nov 2024 12: 42

Instrument : MSVOA_U
 ClientSampleId :

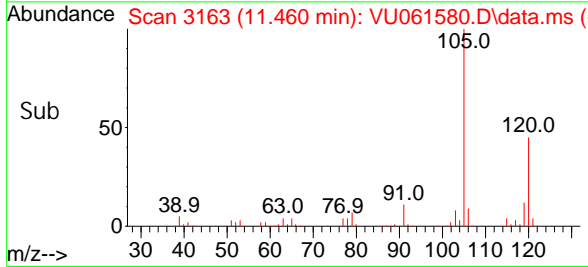
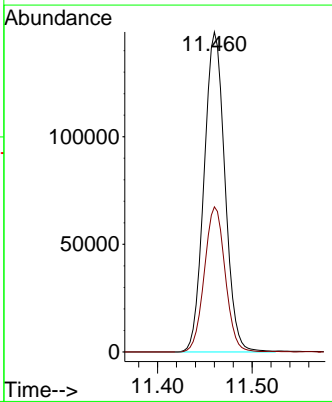
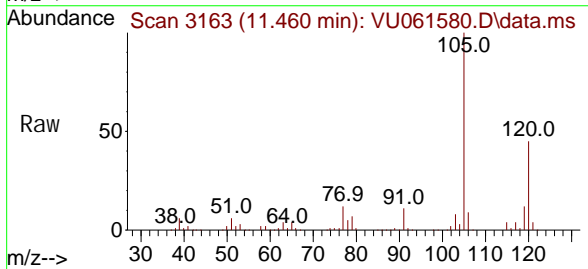


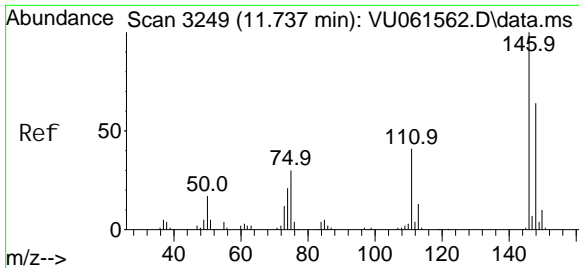
Tgt Ion: 105 Resp: 227355
 Ion Ratio Lower Upper
 105 100
 120 48.4 38.7 58.1



#63
 1, 2, 4-Tri methyl benzene
 Concen: 4.130 ug/L
 RT: 11.460 min Scan# 3163
 Delta R.T. 0.000 min
 Lab File: VU061580.D
 Acq: 11 Nov 2024 12: 42

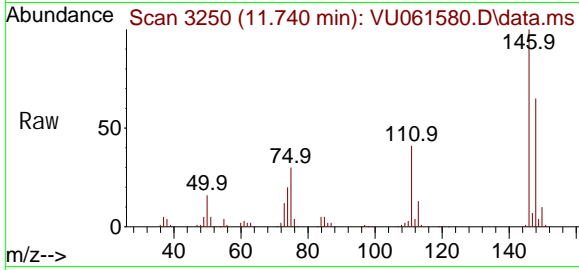
Tgt Ion: 105 Resp: 227554
 Ion Ratio Lower Upper
 105 100
 120 45.4 35.4 53.0



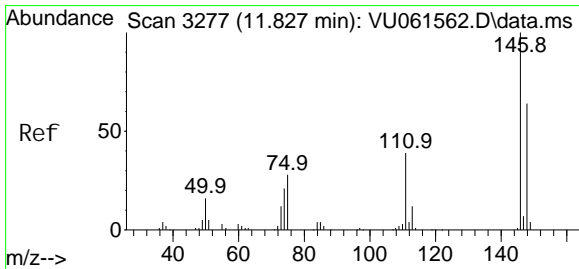
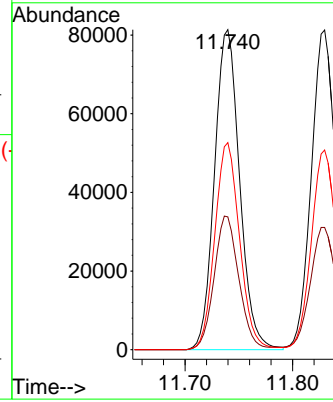
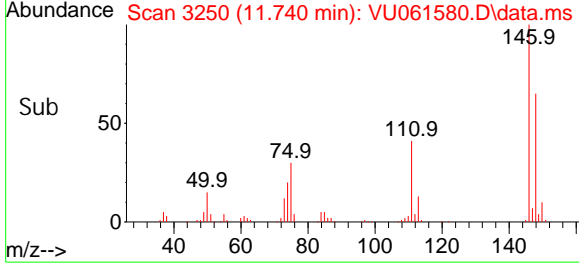


#64
 1,3-Dichlorobenzene
 Concen: 4.586 ug/L
 RT: 11.740 min Scan# 31
 Delta R.T. 0.003 min
 Lab File: VU061580.D
 Acq: 11 Nov 2024 12:42

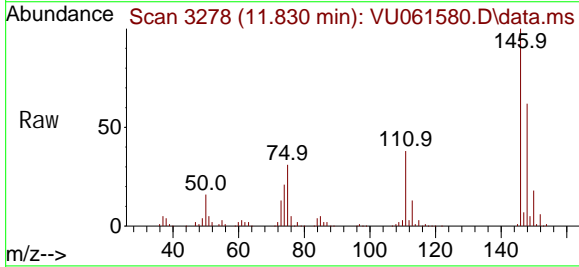
Instrument :
 MSVOA_U
 ClientSampleId :



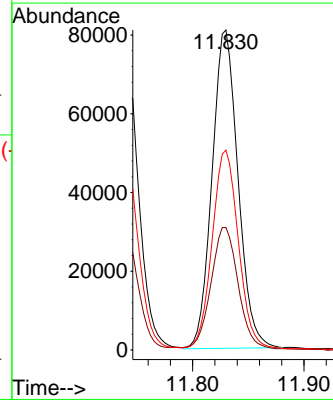
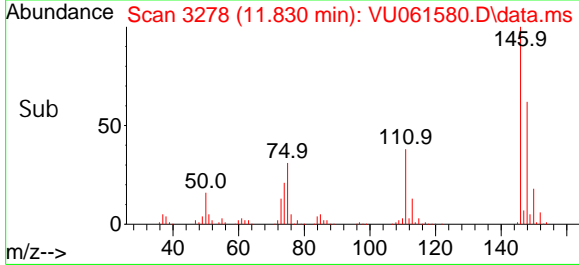
Tgt Ion: 146 Resp: 132152
 Ion Ratio Lower Upper
 146 100
 111 41.5 30.0 55.8
 148 64.7 45.1 83.7

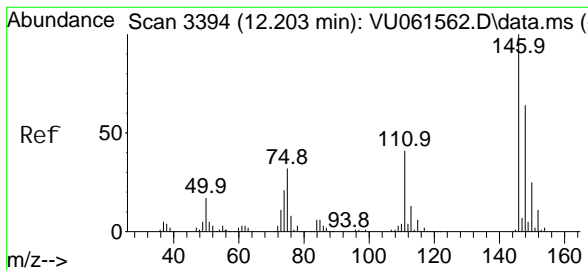


#65
 1,4-Dichlorobenzene
 Concen: 4.454 ug/L
 RT: 11.830 min Scan# 3278
 Delta R.T. 0.003 min
 Lab File: VU061580.D
 Acq: 11 Nov 2024 12:42



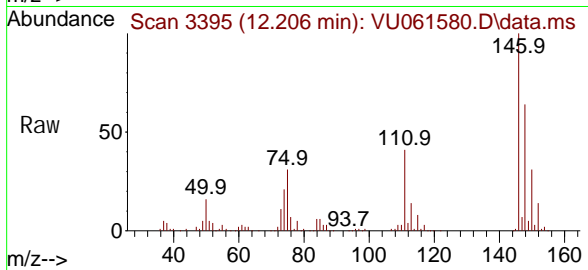
Tgt Ion: 146 Resp: 130833
 Ion Ratio Lower Upper
 146 100
 111 38.3 28.2 52.4
 148 62.5 43.3 80.3



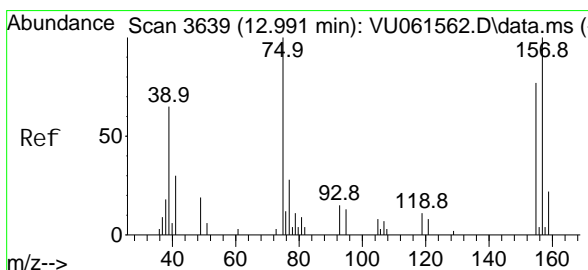
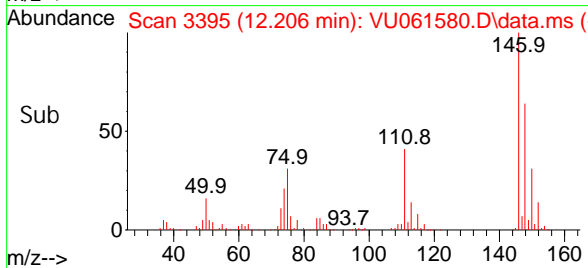
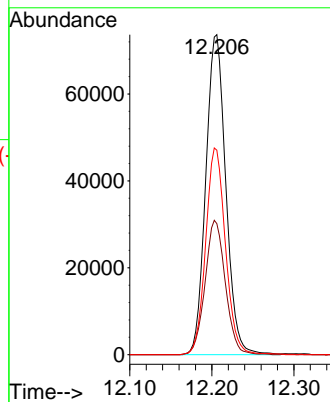


#67
 1, 2-Di chl orobenzene
 Concen: 4.622 ug/L
 RT: 12.206 min Scan# 31
 Del ta R. T. 0.003 min
 Lab File: VU061580.D
 Acq: 11 Nov 2024 12: 42

Instrument :
 MSVOA_U
 ClientSampleId :

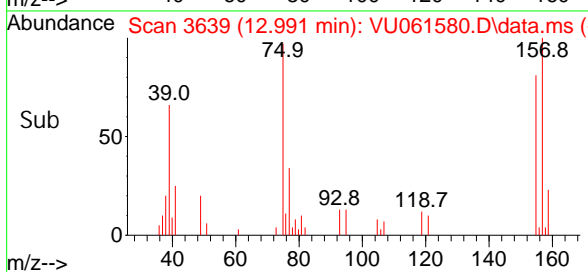
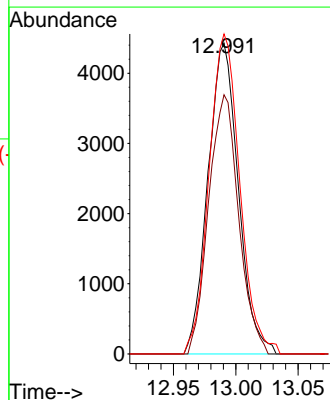
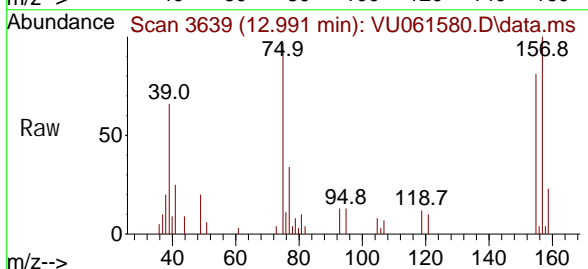


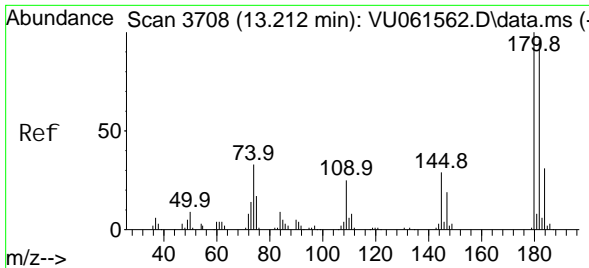
Tgt Ion: 146 Resp: 125338
 Ion Ratio Lower Upper
 146 100
 111 41.0 35.2 52.8
 148 63.9 51.3 76.9



#68
 1, 2-Di bromo-3- chl oropropane
 Concen: 4.006 ug/L
 RT: 12.991 min Scan# 3639
 Del ta R. T. 0.000 min
 Lab File: VU061580.D
 Acq: 11 Nov 2024 12: 42

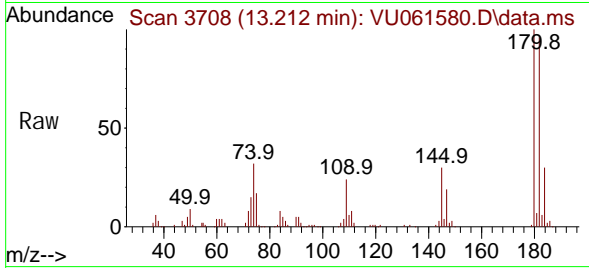
Tgt Ion: 75 Resp: 7509
 Ion Ratio Lower Upper
 75 100
 155 83.5 69.3 103.9
 157 103.1 81.4 122.2



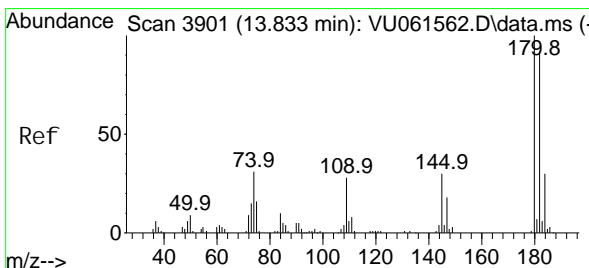
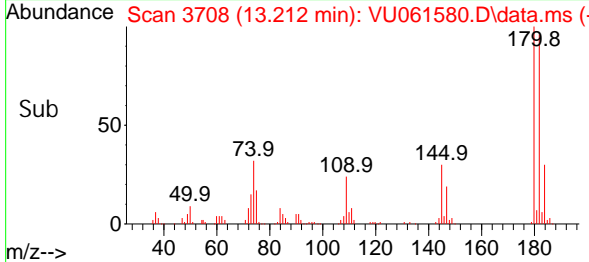
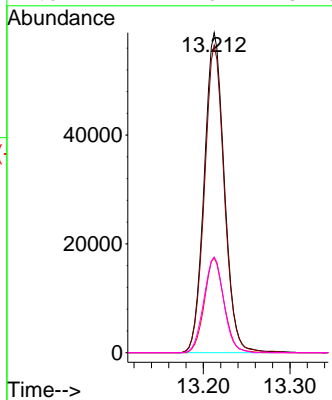


#69
 1, 3, 5-Tri chlorobenzene
 Concen: 4.794 ug/L
 RT: 13.212 min Scan# 3708
 Delta R.T. 0.000 min
 Lab File: VU061580.D
 Acq: 11 Nov 2024 12:42

Instrument :
 MSVOA_U
 ClientSampleId :

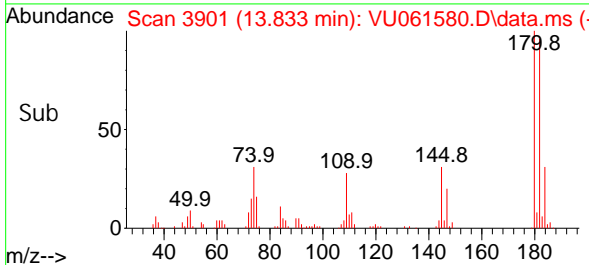
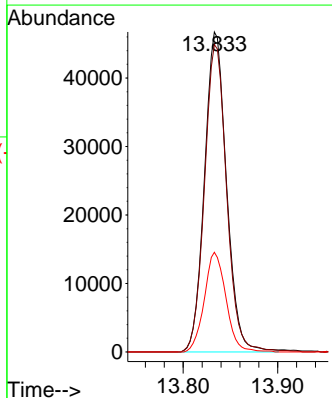
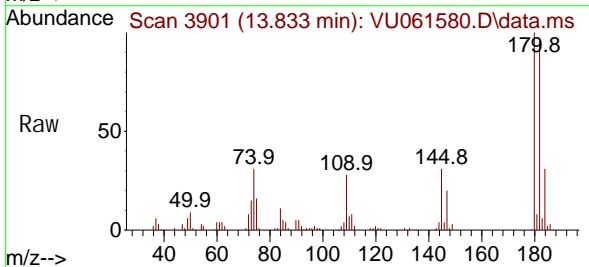


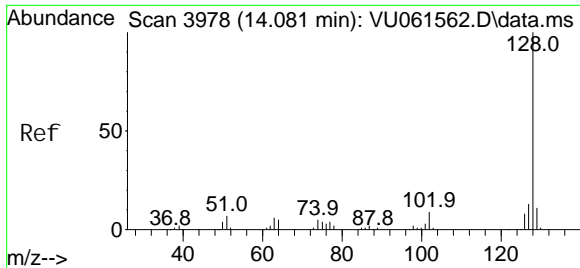
Tgt Ion: 180 Resp: 94685
 Ion Ratio Lower Upper
 180 100
 182 94.9 77.4 116.2
 184 28.9 24.4 36.6
 145 29.7 25.2 37.8



#70
 1, 2, 4-tri chlorobenzene
 Concen: 4.751 ug/L
 RT: 13.833 min Scan# 3901
 Delta R.T. 0.000 min
 Lab File: VU061580.D
 Acq: 11 Nov 2024 12:42

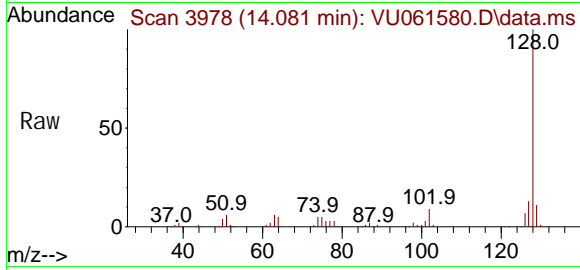
Tgt Ion: 180 Resp: 75725
 Ion Ratio Lower Upper
 180 100
 182 96.7 77.2 115.8
 145 30.6 25.6 38.4



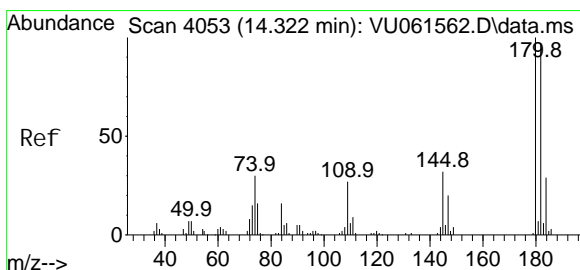
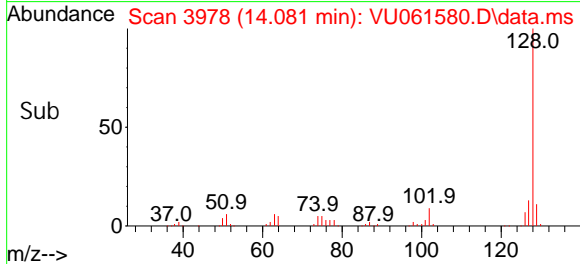
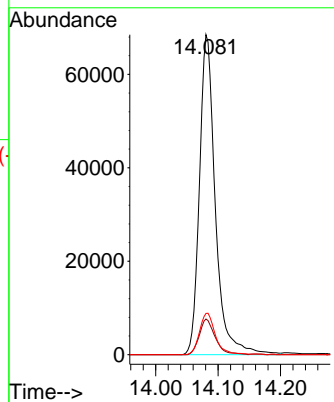


#71
 Naphthalene
 Concen: 4.825 ug/L
 RT: 14.081 min Scan# 3978
 Delta R.T. 0.000 min
 Lab File: VU061580.D
 Acq: 11 Nov 2024 12:42

Instrument : MSVOA_U
 ClientSampleId :



Tgt Ion: 128 Resp: 121369
 Ion Ratio Lower Upper
 128 100
 129 11.1 9.0 13.4
 127 13.0 10.0 15.0



#72
 1,2,3-Trichlorobenzene
 Concen: 5.094 ug/L
 RT: 14.322 min Scan# 4053
 Delta R.T. 0.000 min
 Lab File: VU061580.D
 Acq: 11 Nov 2024 12:42

Tgt Ion: 180 Resp: 67935
 Ion Ratio Lower Upper
 180 100
 182 92.1 76.0 114.0
 145 31.3 26.5 39.7

