

Data Path : Z:\VOASRV\HPCHEM1\MSVOA U\DATA\VU111218\
 Data File : VU028071.D
 Acq On : 12 Nov 2018 17:45
 Operator : MD/SY
 Sample : J5269-14
 Misc : 5.0mL/MSVOA U/WATER
 ALS Vial : 18 Sample Multiplier: 1

Instrument :
 MSVOA_U
 Client Sampled :
 SB-13-S

Quant Time: Nov 13 02:46:48 2018
 Quant Method : Z:\VOASRV\HPCHEM1\MSVOA_U\METHOD\82U110218W.M
 Quant Title : SW846 8260
 QLast Update : Fri Nov 02 02:28:20 2018
 Response via : Initial Calibration

Internal Standards	R.T.	QIon	Response	Conc	Units	Dev(Min)
1) Pentafluorobenzene	4.99	168	172401	50.00	ug/l	0.00
34) 1,4-Difluorobenzene	5.89	114	330065	50.00	ug/l	0.00
63) Chlorobenzene-d5	9.09	117	304435	50.00	ug/l	0.00
72) 1,4-Dichlorobenzene-d4	11.48	152	121970	50.00	ug/l	0.00

System Monitoring Compounds

33) 1,2-Dichloroethane-d4	5.31	65	153745	59.98	ug/l	0.00
Spiked Amount	50.000		Recovery	=	119.96%	
35) Dibromofluoromethane	4.88	113	109169	52.46	ug/l	0.00
Spiked Amount	50.000		Recovery	=	104.92%	
50) Toluene-d8	7.57	98	440441	54.79	ug/l	0.00
Spiked Amount	50.000		Recovery	=	109.58%	
62) 4-Bromofluorobenzene	10.31	95	145648	49.12	ug/l	0.00
Spiked Amount	50.000		Recovery	=	98.24%	

Target Compounds

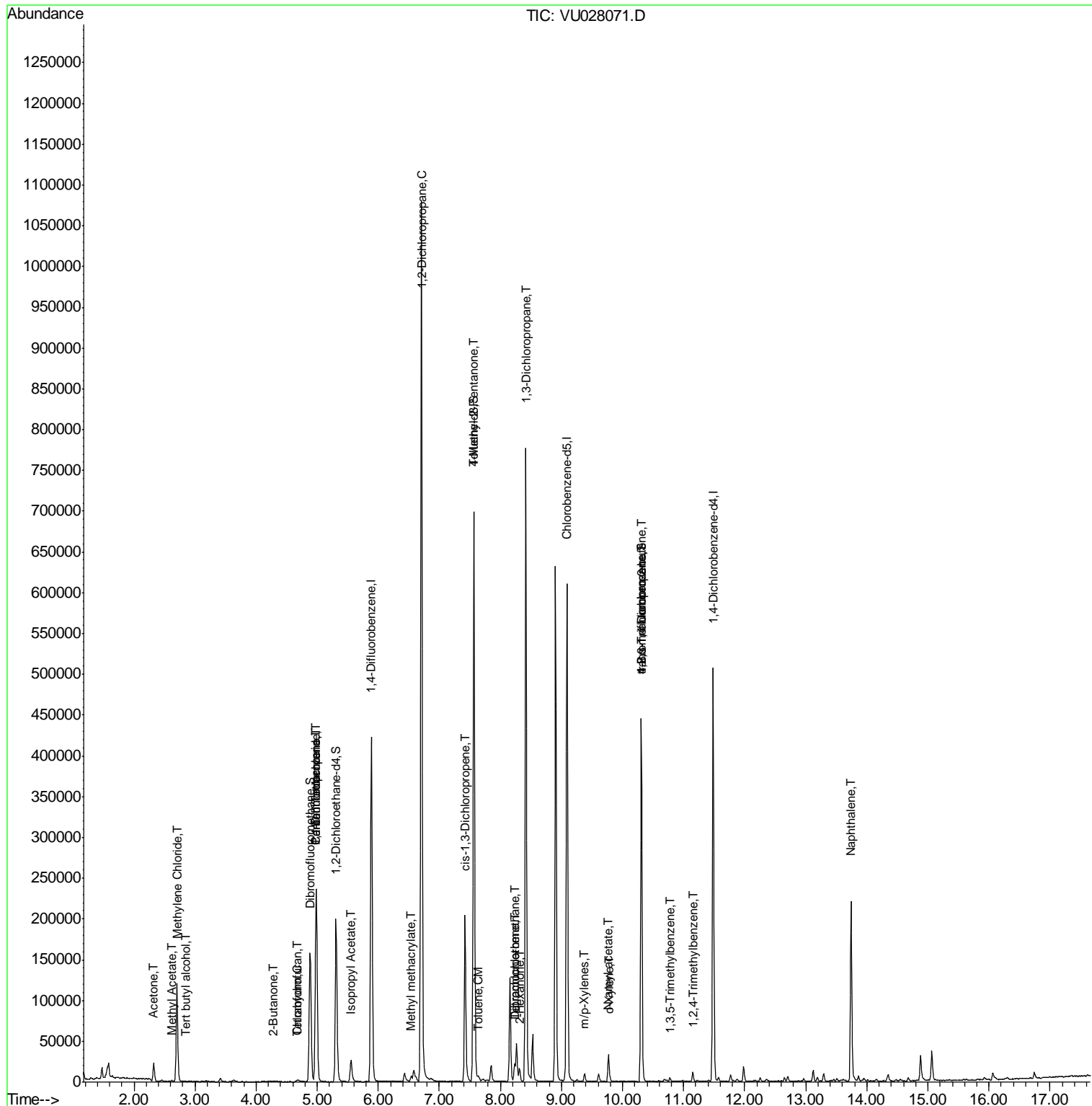
					Qvalue	
11) Tert butyl alcohol	2.84	59	733	1.080	ug/l #	73
13) Acrolein	2.19	56	302	Below Cal	#	81
16) Acetone	2.32	43	23137	14.549	ug/l	97
18) Methyl Acetate	2.62	43	2294	0.524	ug/l #	81
20) Methylene Chloride	2.70	84	49043	21.122	ug/l	96
25) 2-Butanone	4.29	43	2052	0.811	ug/l	94
29) Tetrahydrofuran	4.66	42	614	0.363	ug/l #	64
30) Chloroform	4.67	83	1430	0.343	ug/l	95
31) Cyclohexane	4.98	56	4166	Below Cal	#	1
36) 1,1-Dichloropropene	4.99	75	16237	4.697	ug/l #	49
38) Carbon Tetrachloride	4.98	117	17890	5.840	ug/l #	16
43) Isopropyl Acetate	5.56	43	34314	4.324	ug/l	99
45) 1,2-Dichloropropane	6.70	63	1029	0.338	ug/l #	44
48) Methyl methacrylate	6.54	41	10671	2.744	ug/l #	18
51) 4-Methyl-2-Pentanone	7.57	43	9404	1.774	ug/l	91
52) Toluene	7.64	92	2168	0.349	ug/l	96
54) cis-1,3-Dichloropropene	7.42	75	33548	8.060	ug/l #	62
57) 1,3-Dichloropropane	8.41	76	7380	1.603	ug/l #	43
59) 2-Hexanone	8.31	43	12729	3.105	ug/l #	26
60) Dibromochloromethane	8.23	129	1214	0.508	ug/l #	10
64) Tetrachloroethene	8.23	164	1448	0.734	ug/l #	89
68) m/p-Xylenes	9.38	106	2916	0.679	ug/l	93
69) o-Xylene	9.78	106	1075	0.248	ug/l	93
74) N-amyl acetate	9.77	43	10959	1.918	ug/l #	55
76) 1,2,3-Trichloropropane	10.31	75	77990	23.377	ug/l #	34
80) 1,3,5-Trimethylbenzene	10.77	105	2908	0.372	ug/l	90
81) trans-1,4-Dichloro-2-buten	10.31	75	77990	58.323	ug/l #	100
84) 1,2,4-Trimethylbenzene	11.15	105	6799	0.863	ug/l	97
95) Naphthalene	13.74	128	169020	16.773	ug/l	99

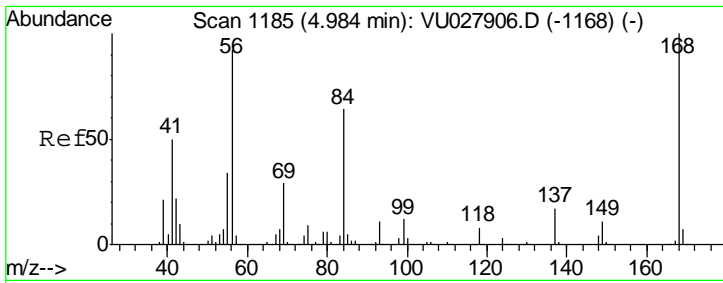
(#) = qualifier out of range (m) = manual integration (+) = signals summed

Data Path : Z:\VOASRV\HPCHEM1\MSVOA U\DATA\VU111218\
 Data File : VU028071.D
 Acq On : 12 Nov 2018 17:45
 Operator : MD/SY
 Sample : J5269-14
 Misc : 5.0mL/MSVOA U/WATER
 ALS Vial : 18 Sample Multiplier: 1

Instrument :
 MSVOA_U
 ClientSampled :
 SB-13-S

Quant Time: Nov 13 02:46:48 2018
 Quant Method : Z:\VOASRV\HPCHEM1\MSVOA_U\METHOD\82U110218W.M
 Quant Title : SW846 8260
 QLast Update : Fri Nov 02 02:28:20 2018
 Response via : Initial Calibration

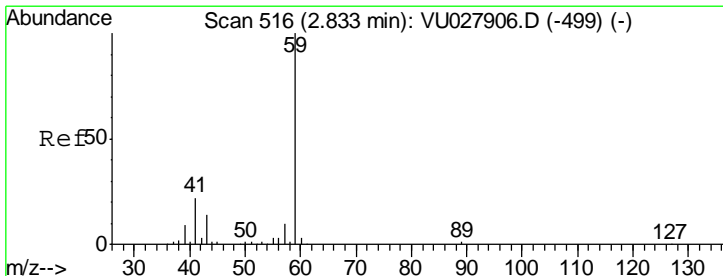
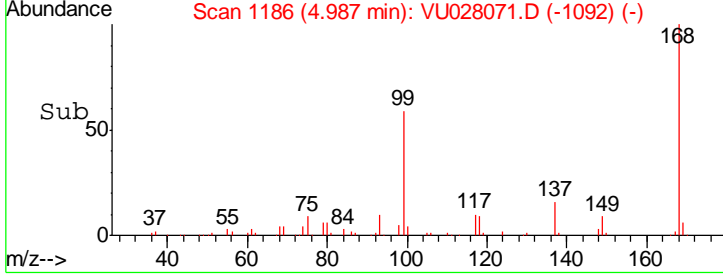
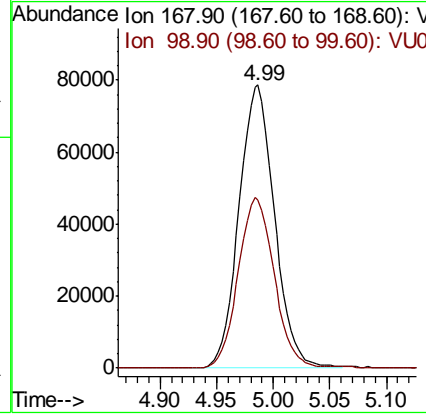
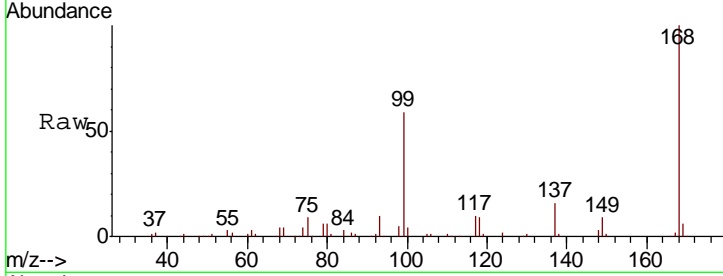




#1
 Pentafluorobenzene
 Concen: 50.000 ug/l
 RT: 4.99 min Scan# 1186
 Delta R.T. 0.00 min
 Lab File: VU028071.D
 Acq: 12 Nov 2018 17:45

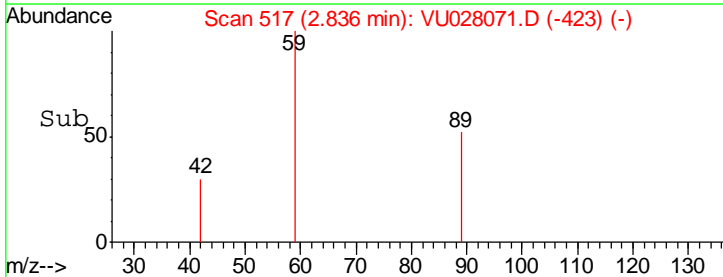
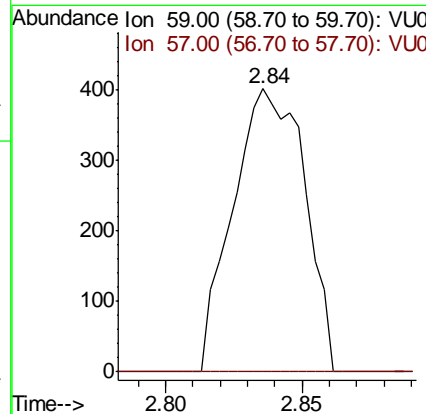
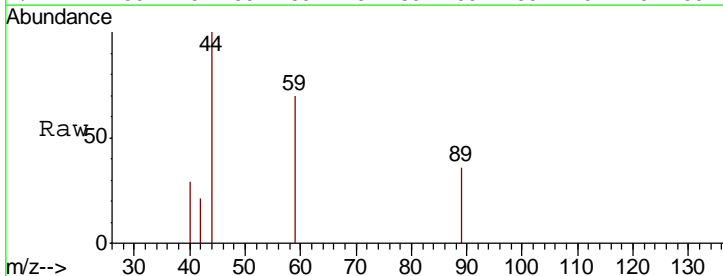
Instrument : MSVOA_U
 ClientSampled : SB-13-S

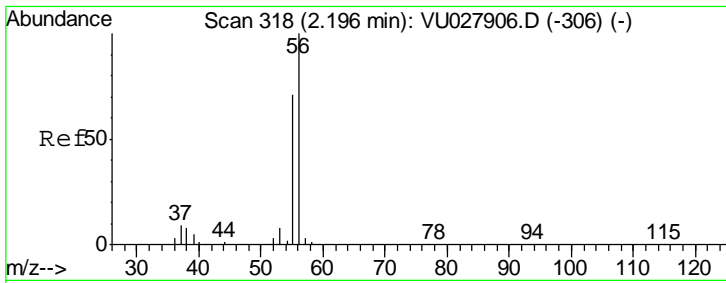
Tgt Ion	Resp	Lower	Upper
168	172401		
99	59.3	47.9	71.9



#11
 Tert butyl alcohol
 Concen: 1.080 ug/l
 RT: 2.84 min Scan# 517
 Delta R.T. 0.00 min
 Lab File: VU028071.D
 Acq: 12 Nov 2018 17:45

Tgt Ion	Resp	Lower	Upper
59	733		
57	0.0	7.8	11.8#

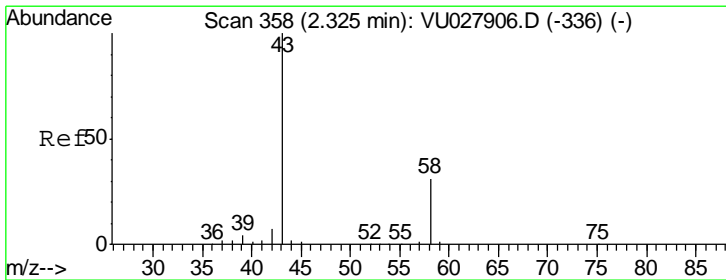
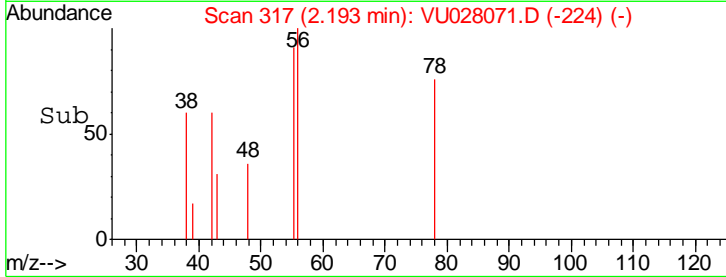
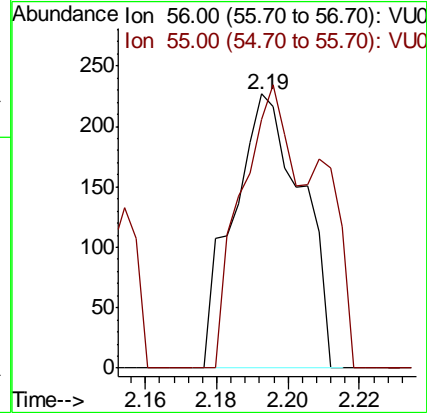
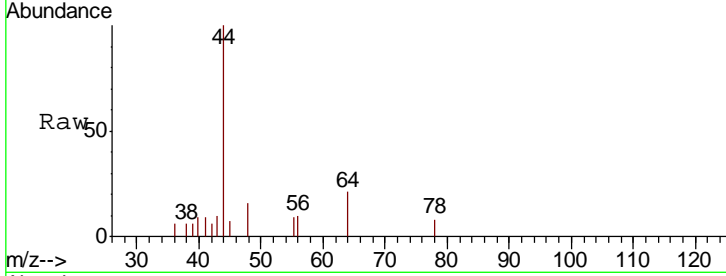




#13
 Acrolein
 Concen: Below Cal
 RT: 2.19 min Scan# 317
 Delta R.T. -0.00 min
 Lab File: VU028071.D
 Acq: 12 Nov 2018 17:45

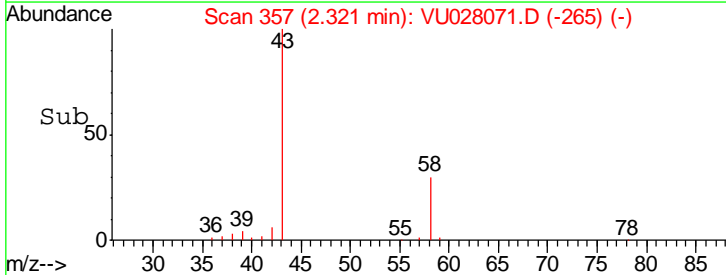
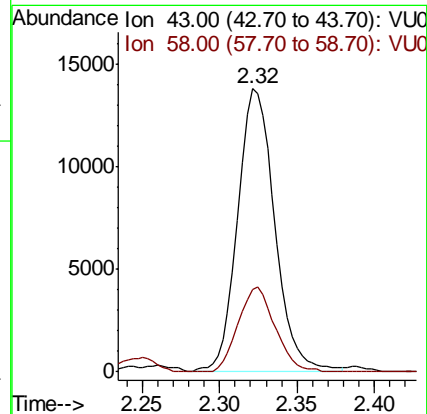
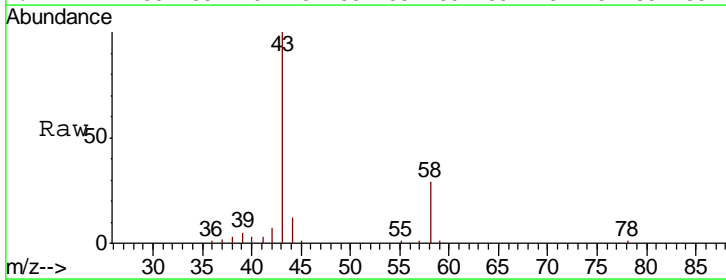
Instrument :
 MSVOA_U
 ClientSampled :
 SB-13-S

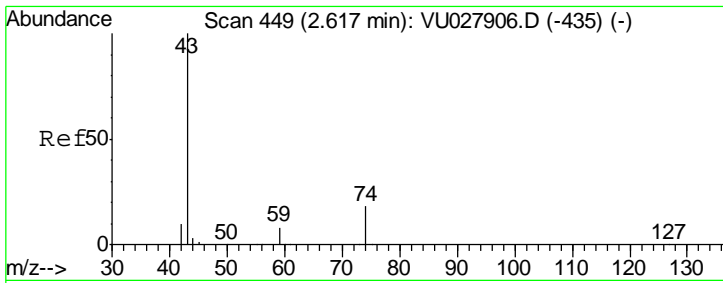
Tgt Ion: 56 Resp: 302
 Ion Ratio Lower Upper
 56 100
 55 86.1 56.2 84.4#



#16
 Acetone
 Concen: 14.549 ug/l
 RT: 2.32 min Scan# 357
 Delta R.T. -0.00 min
 Lab File: VU028071.D
 Acq: 12 Nov 2018 17:45

Tgt Ion: 43 Resp: 23137
 Ion Ratio Lower Upper
 43 100
 58 29.2 24.6 37.0

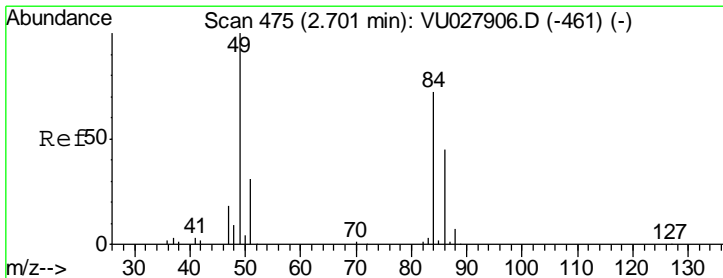
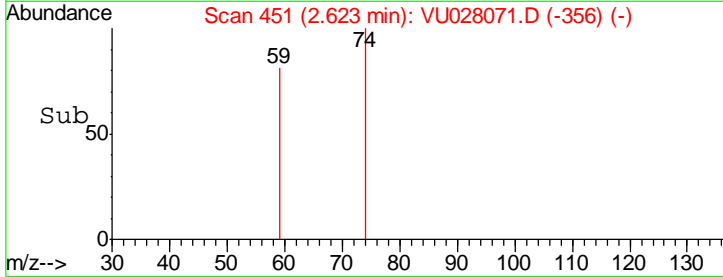
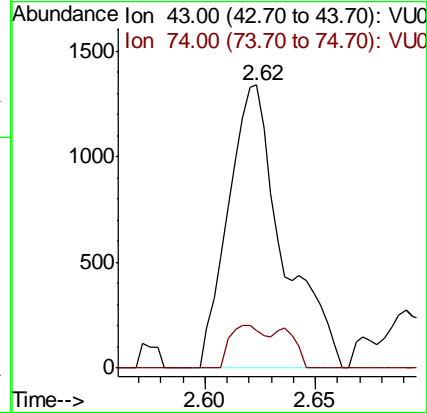
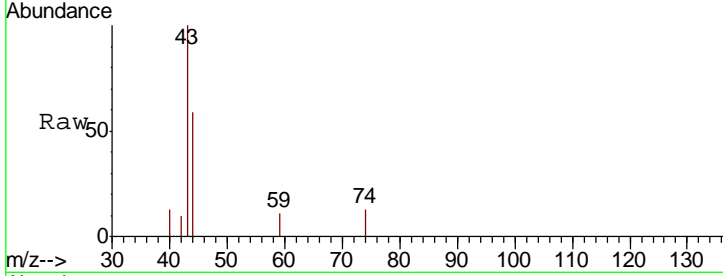




#18
 Methyl Acetate
 Concen: 0.524 ug/l
 RT: 2.62 min Scan# 451
 Delta R.T. 0.01 min
 Lab File: VU028071.D
 Acq: 12 Nov 2018 17:45

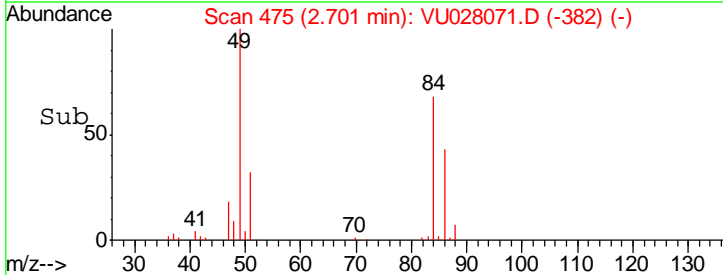
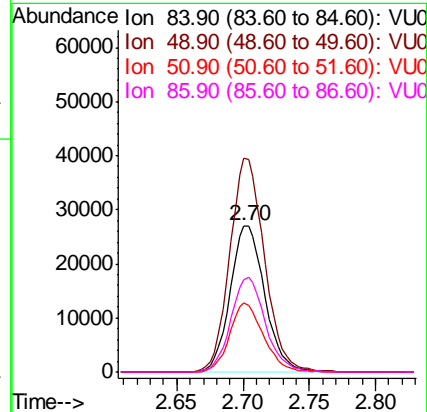
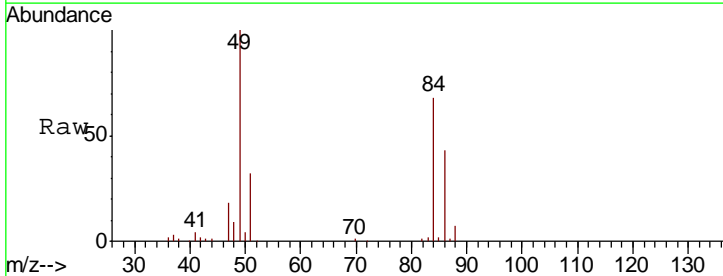
Instrument :
 MSVOA_U
 ClientSampled :
 SB-13-S

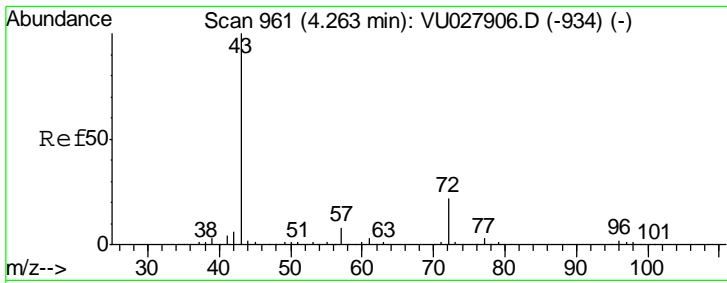
Tgt Ion	Resp	Lower	Upper
43	100		
74	10.2	14.9	22.3#



#20
 Methylene Chloride
 Concen: 21.122 ug/l
 RT: 2.70 min Scan# 475
 Delta R.T. -0.00 min
 Lab File: VU028071.D
 Acq: 12 Nov 2018 17:45

Tgt Ion	Resp	Lower	Upper
84	100		
49	146.2	111.6	167.4
51	47.1	34.8	52.2
86	63.1	50.1	75.1

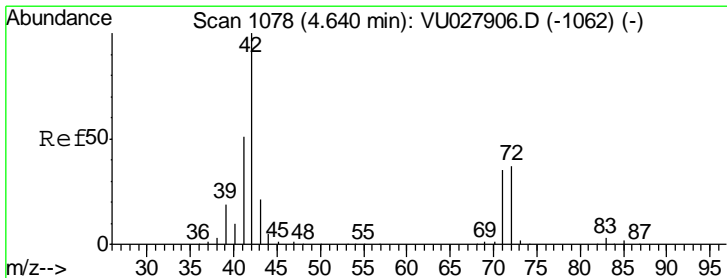
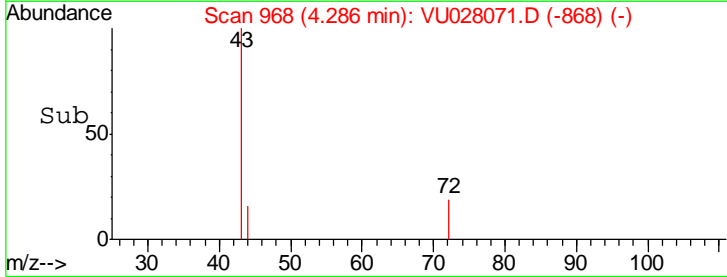
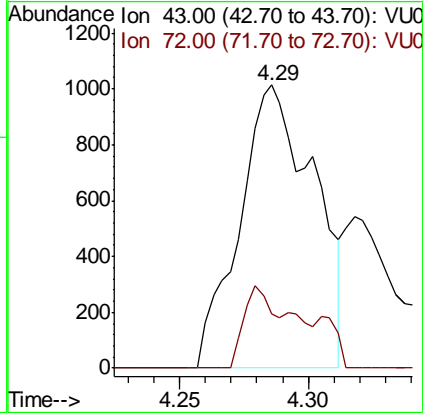
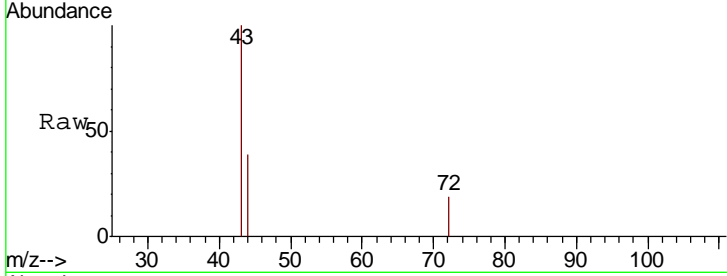




#25
 2-Butanone
 Concen: 0.811 ug/l
 RT: 4.29 min Scan# 968
 Delta R.T. 0.02 min
 Lab File: VU028071.D
 Acq: 12 Nov 2018 17:45

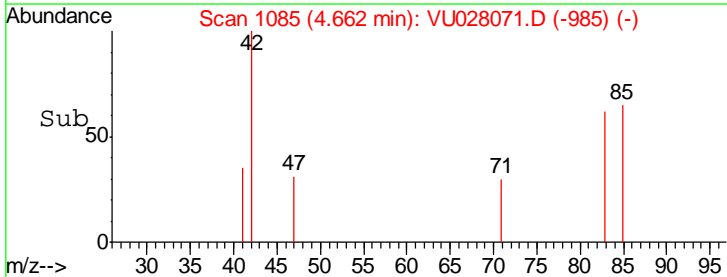
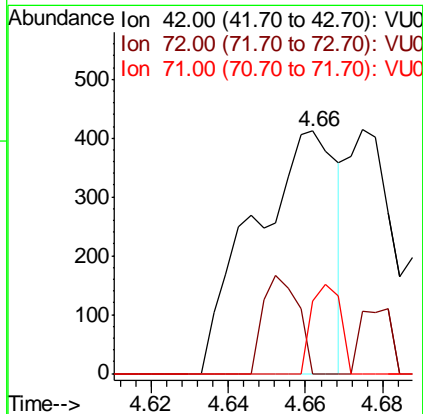
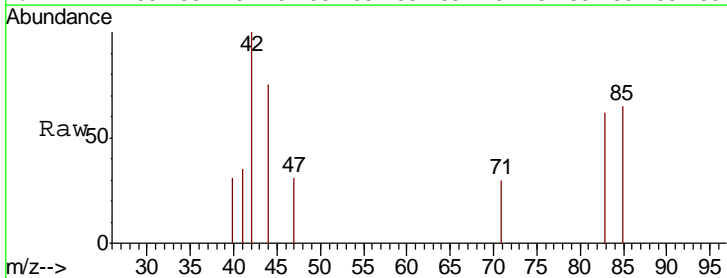
Instrument :
 MSVOA_U
 ClientSampled :
 SB-13-S

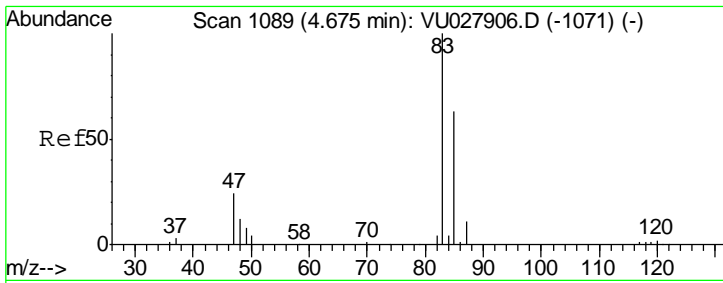
Tgt Ion	Resp	Lower	Upper
43	100		
72	19.3	17.7	26.5



#29
 Tetrahydrofuran
 Concen: 0.363 ug/l
 RT: 4.66 min Scan# 1085
 Delta R.T. 0.02 min
 Lab File: VU028071.D
 Acq: 12 Nov 2018 17:45

Tgt Ion	Resp	Lower	Upper
42	100		
72	17.1	29.4	44.0#
71	12.7	27.9	41.9#



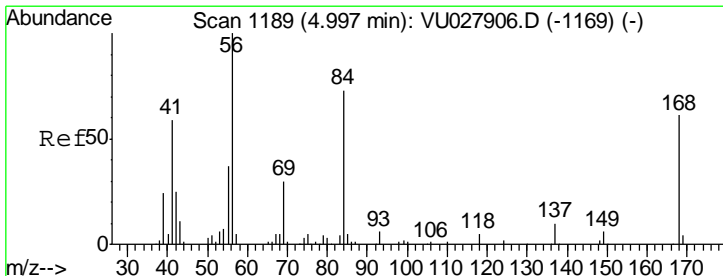
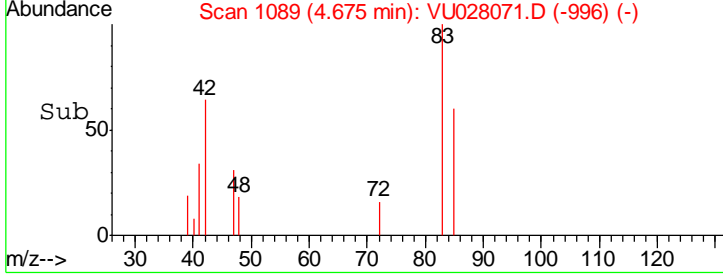
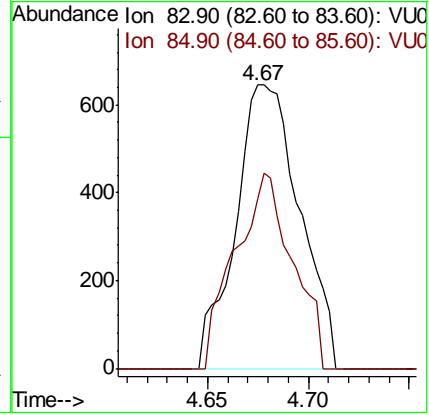
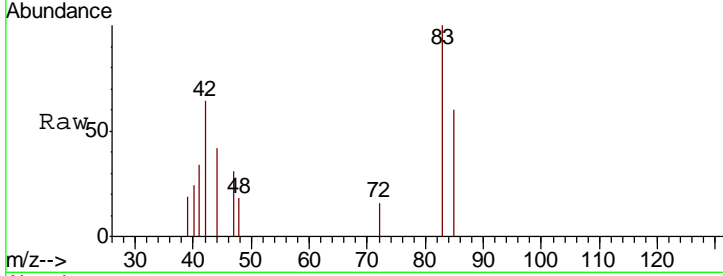


#30
 Chloroform
 Concen: 0.343 ug/l
 RT: 4.67 min Scan# 1089
 Delta R.T. -0.00 min
 Lab File: VU028071.D
 Acq: 12 Nov 2018 17:45

Instrument :
 MSVOA_U
ClientSampled :
 SB-13-S

Tgt Ion: 83 Resp: 1430

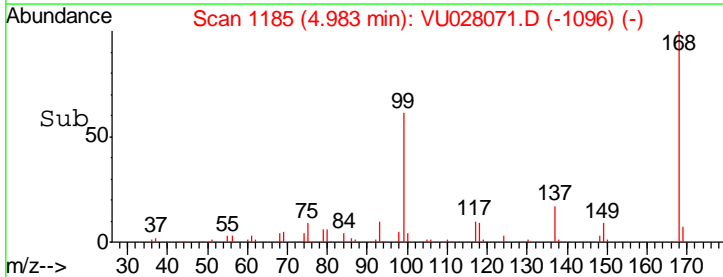
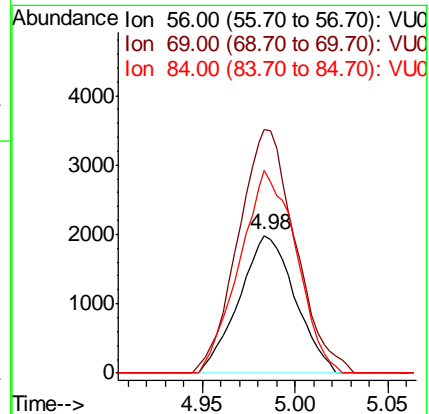
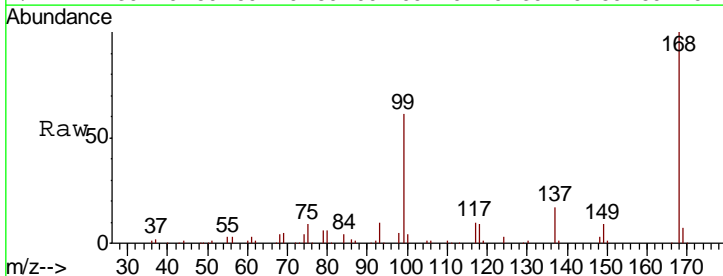
Ion	Ratio	Lower	Upper
83	100		
85	59.7	50.6	76.0

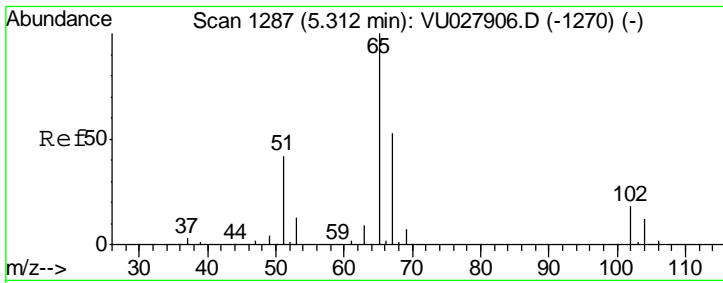


#31
 Cyclohexane
 Concen: Below Cal
 RT: 4.98 min Scan# 1185
 Delta R.T. -0.01 min
 Lab File: VU028071.D
 Acq: 12 Nov 2018 17:45

Tgt Ion: 56 Resp: 4166

Ion	Ratio	Lower	Upper
56	100		
69	176.6	23.7	35.5#
84	146.9	58.2	87.4#

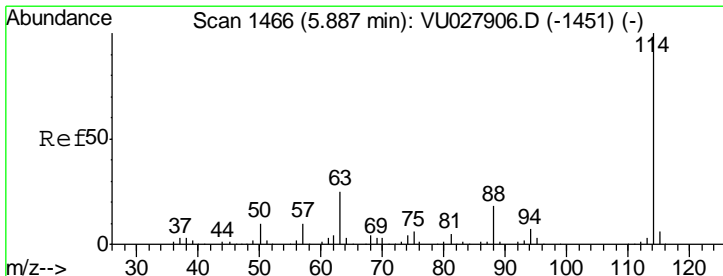
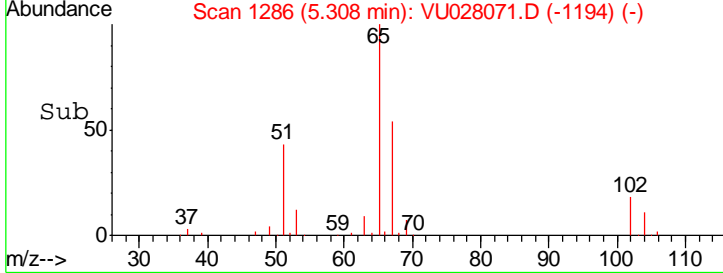
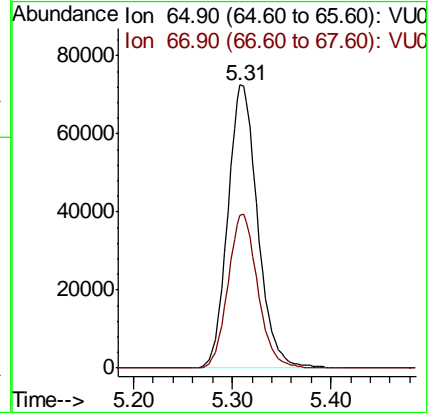
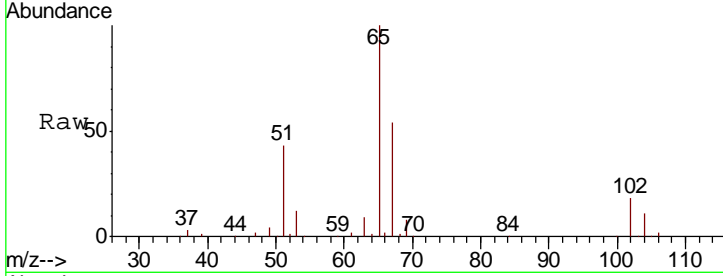




#33
 1,2-Dichloroethane-d4
 Concen: 59.982 ug/l
 RT: 5.31 min Scan# 1286
 Delta R.T. -0.00 min
 Lab File: VU028071.D
 Acq: 12 Nov 2018 17:45

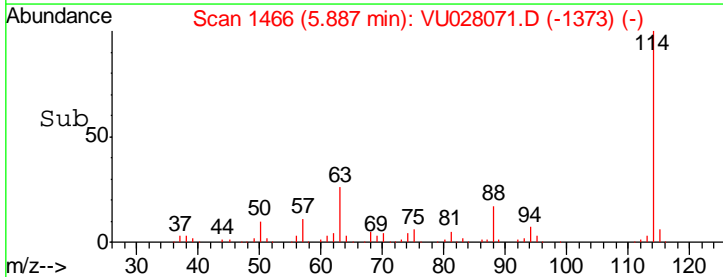
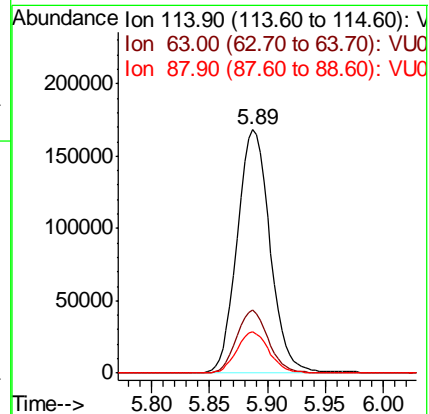
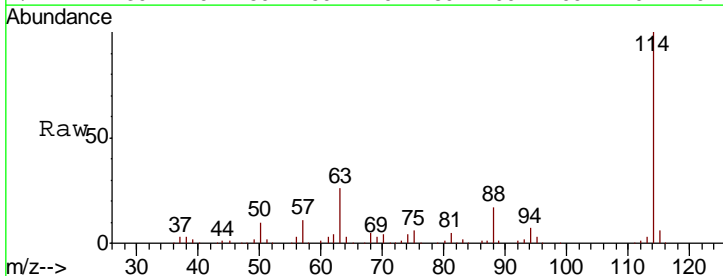
Instrument :
 MSVOA_U
 ClientSampled :
 SB-13-S

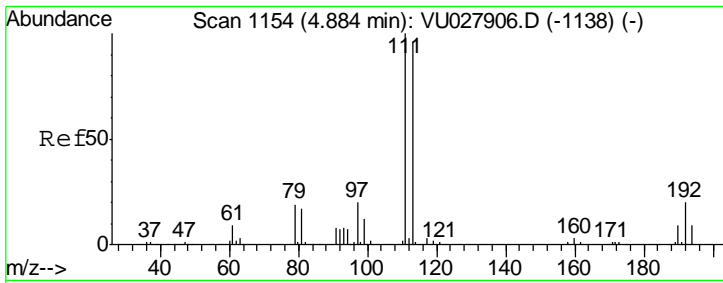
Tgt Ion	Resp	Lower	Upper
65	153745		
67	53.9	0.0	109.0



#34
 1,4-Difluorobenzene
 Concen: 50.000 ug/l
 RT: 5.89 min Scan# 1466
 Delta R.T. -0.00 min
 Lab File: VU028071.D
 Acq: 12 Nov 2018 17:45

Tgt Ion	Resp	Lower	Upper
114	330065		
63	25.9	0.0	50.8
88	16.9	0.0	35.8

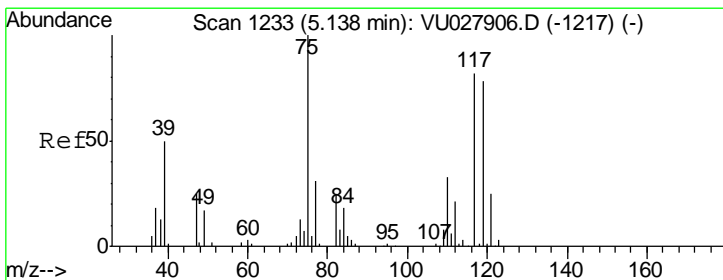
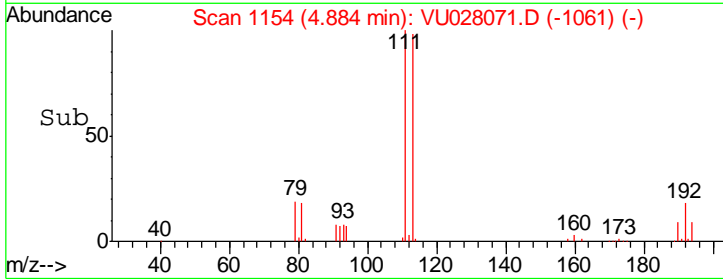
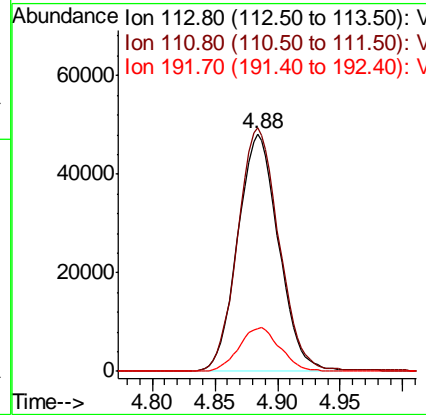
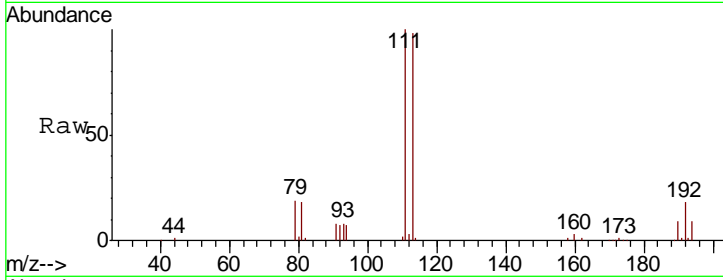




#35
 Dibromofluoromethane
 Concen: 52.457 ug/l
 RT: 4.88 min Scan# 1154
 Delta R.T. -0.00 min
 Lab File: VU028071.D
 Acq: 12 Nov 2018 17:45

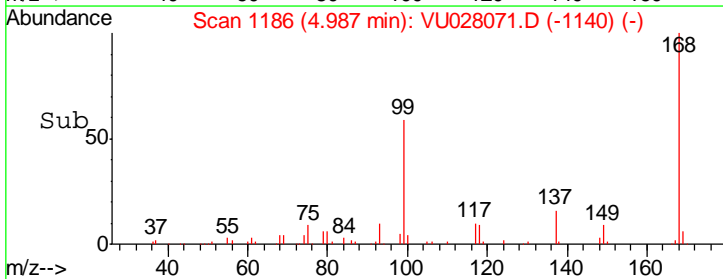
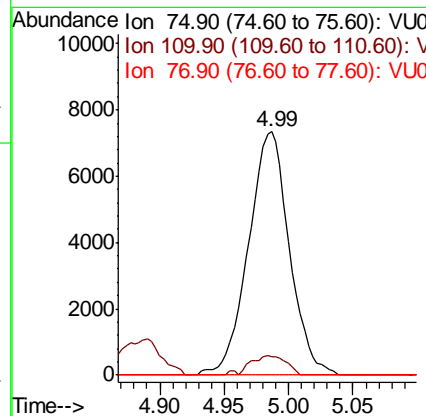
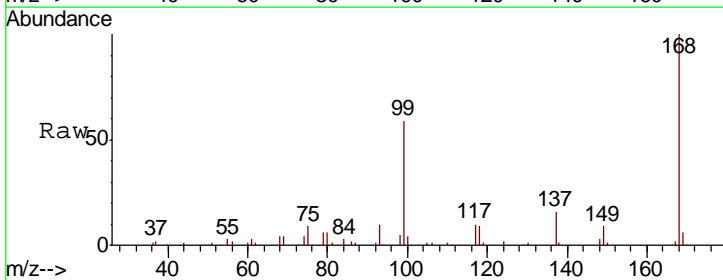
Instrument :
 MSVOA_U
 ClientSampled :
 SB-13-S

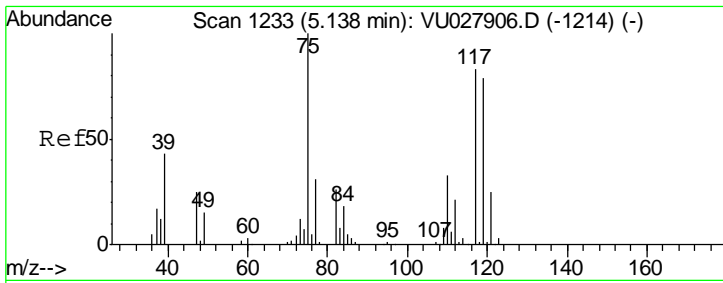
Tgt Ion	Resp	Lower	Upper
113	109169		
111	103.8	83.0	124.6
192	18.5	15.6	23.4



#36
 1,1-Dichloropropene
 Concen: 4.697 ug/l
 RT: 4.99 min Scan# 1186
 Delta R.T. -0.15 min
 Lab File: VU028071.D
 Acq: 12 Nov 2018 17:45

Tgt Ion	Resp	Lower	Upper
75	16237		
110	7.1	16.5	49.5#
77	0.0	24.9	37.3#

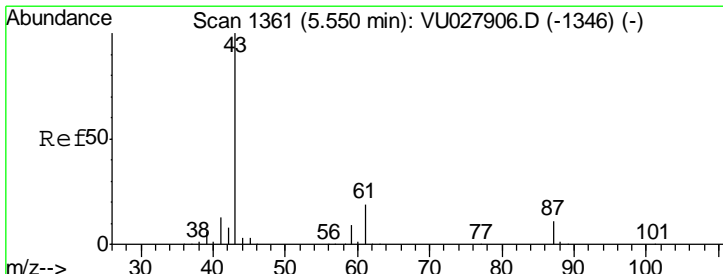
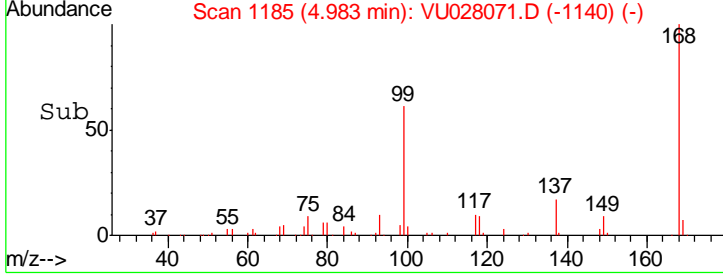
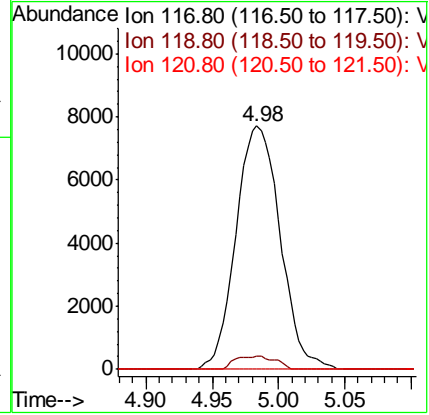
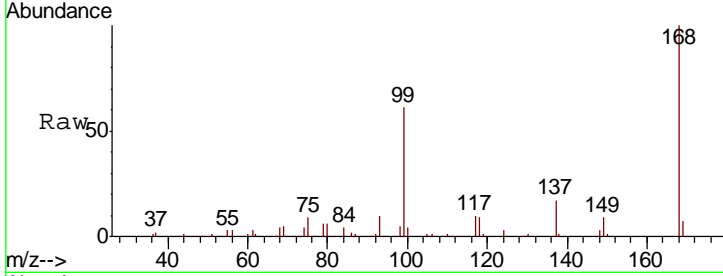




#38
 Carbon Tetrachloride
 Concen: 5.840 ug/l
 RT: 4.98 min Scan# 1185
 Delta R.T. -0.15 min
 Lab File: VU028071.D
 Acq: 12 Nov 2018 17:45

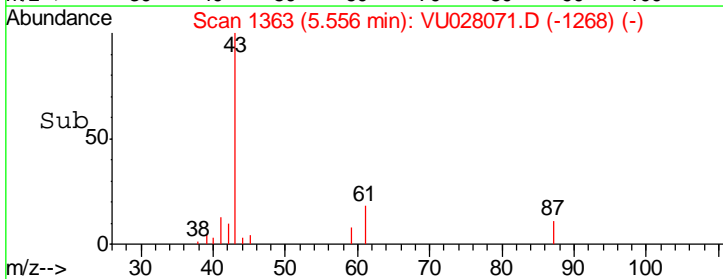
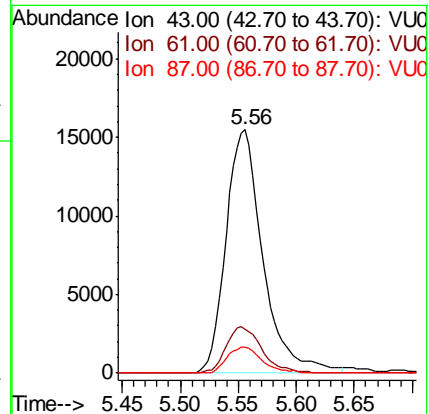
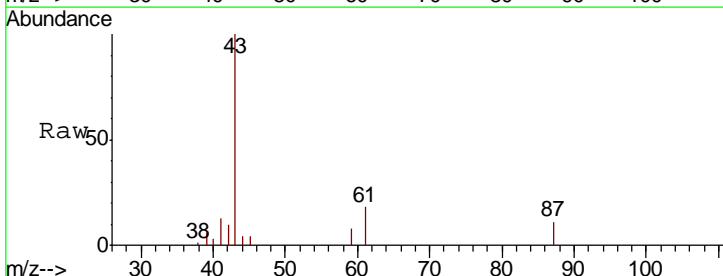
Instrument :
 MSVOA_U
 ClientSampled :
 SB-13-S

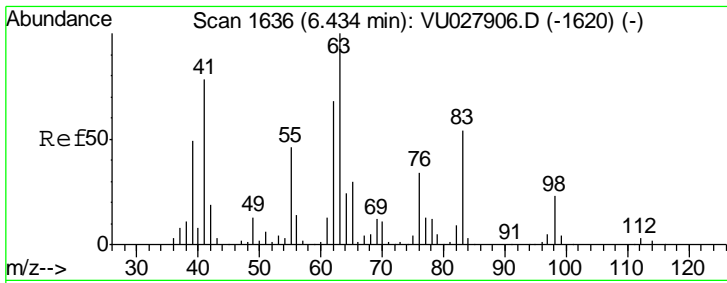
Tgt Ion	Resp	Lower	Upper
117	17890		
119	5.2	76.0	114.0#
121	0.0	24.5	36.7#



#43
 Isopropyl Acetate
 Concen: 4.324 ug/l
 RT: 5.56 min Scan# 1363
 Delta R.T. 0.01 min
 Lab File: VU028071.D
 Acq: 12 Nov 2018 17:45

Tgt Ion	Resp	Lower	Upper
43	34314		
61	18.3	15.0	22.4
87	10.0	8.6	12.8

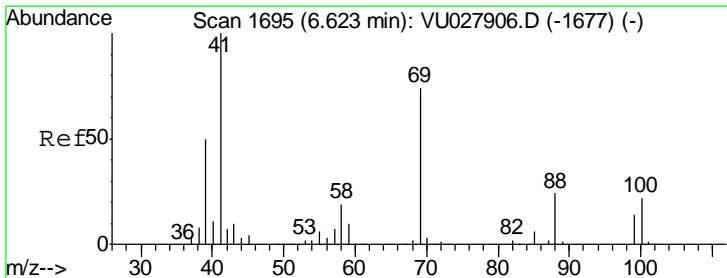
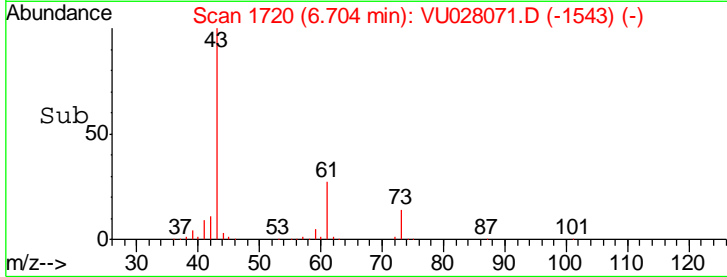
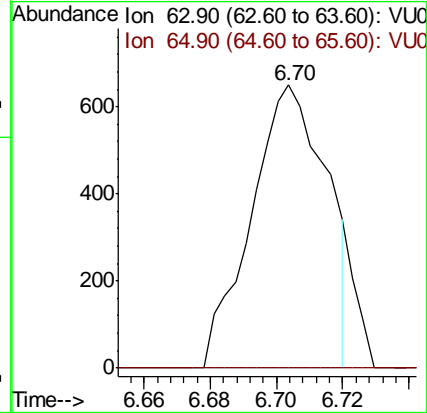
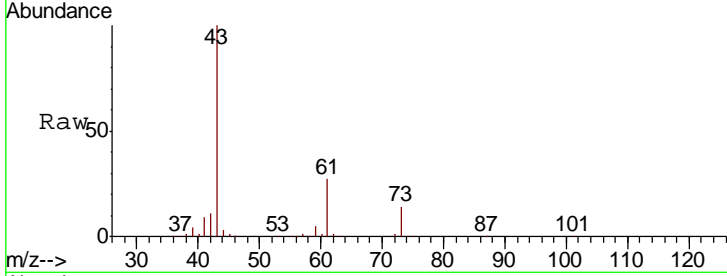




#45
 1,2-Dichloropropane
 Concen: 0.338 ug/l
 RT: 6.70 min Scan# 1720
 Delta R.T. 0.27 min
 Lab File: VU028071.D
 Acq: 12 Nov 2018 17:45

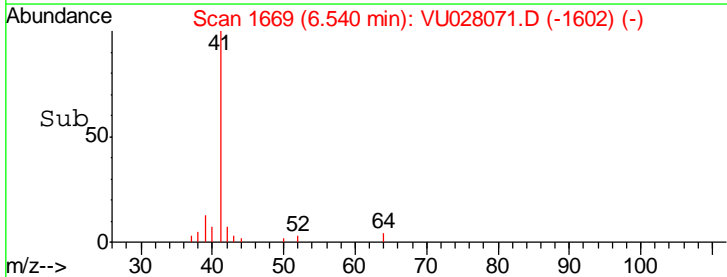
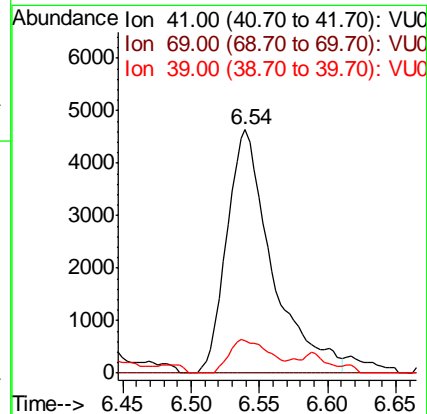
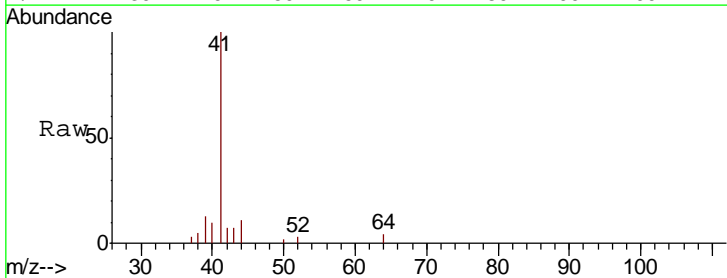
Instrument :
 MSVOA_U
 ClientSampled :
 SB-13-S

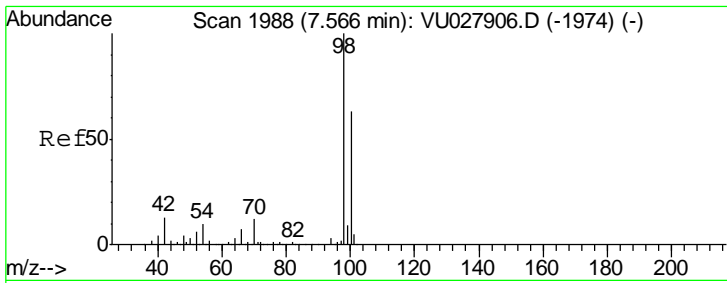
Tgt Ion: 63 Resp: 1029
 Ion Ratio Lower Upper
 63 100
 65 0.0 24.4 36.6#



#48
 Methyl methacrylate
 Concen: 2.744 ug/l
 RT: 6.54 min Scan# 1669
 Delta R.T. -0.08 min
 Lab File: VU028071.D
 Acq: 12 Nov 2018 17:45

Tgt Ion: 41 Resp: 10671
 Ion Ratio Lower Upper
 41 100
 69 0.0 59.8 89.8#
 39 0.0 40.0 60.0#

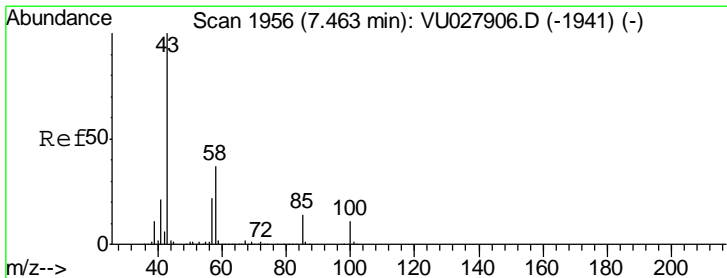
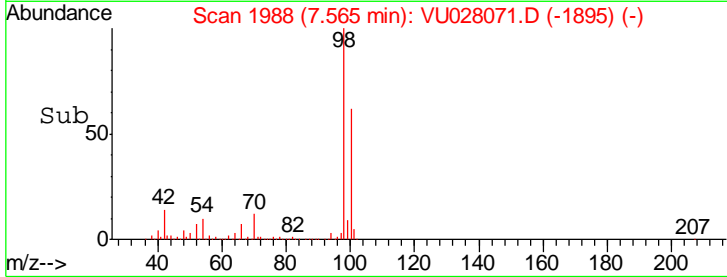
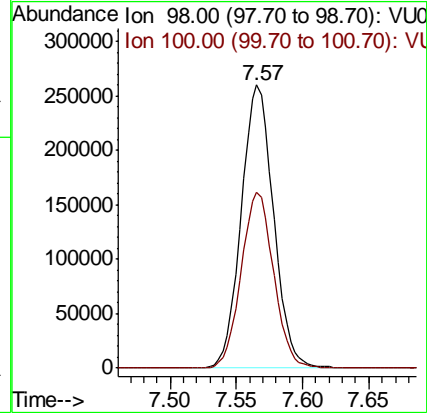
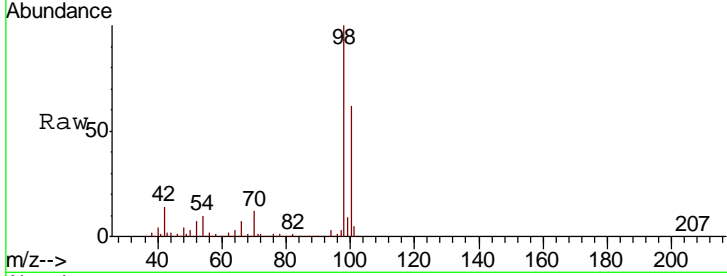




#50
 Toluene-d8
 Concen: 54.787 ug/l
 RT: 7.57 min Scan# 1988
 Delta R.T. -0.00 min
 Lab File: VU028071.D
 Acq: 12 Nov 2018 17:45

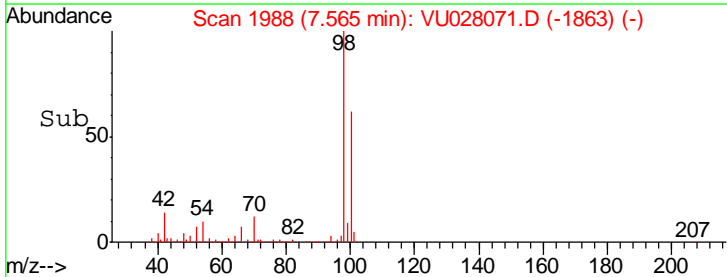
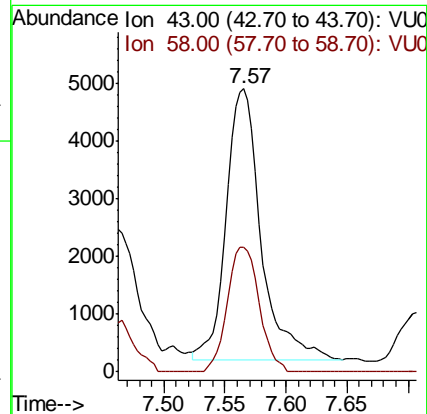
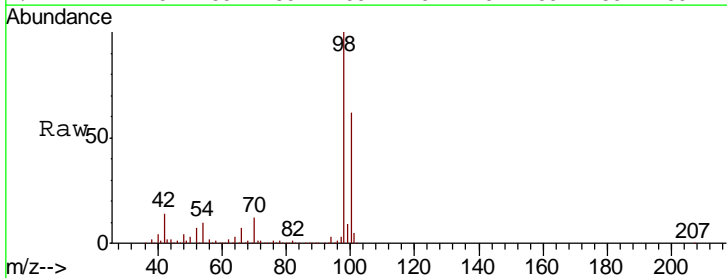
Instrument :
 MSVOA_U
 ClientSampleID :
 SB-13-S

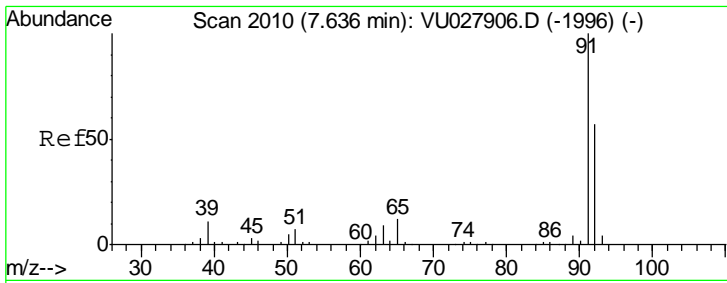
Tgt Ion: 98 Resp: 440441
 Ion Ratio Lower Upper
 98 100
 100 62.5 50.1 75.1



#51
 4-Methyl-2-Pentanone
 Concen: 1.774 ug/l
 RT: 7.57 min Scan# 1988
 Delta R.T. 0.10 min
 Lab File: VU028071.D
 Acq: 12 Nov 2018 17:45

Tgt Ion: 43 Resp: 9404
 Ion Ratio Lower Upper
 43 100
 58 42.3 29.5 44.3



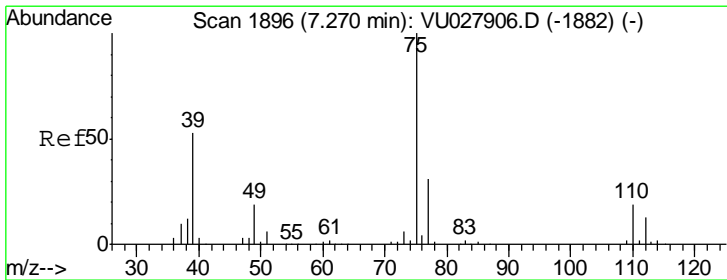
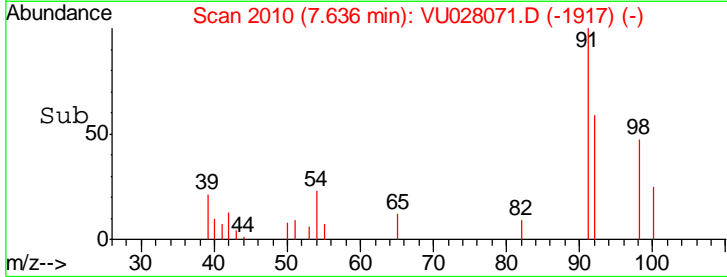
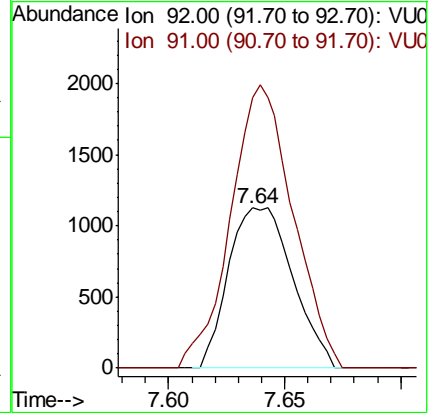
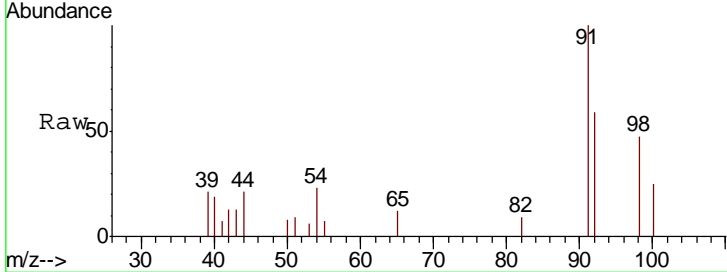


#52

Toluene
 Concen: 0.349 ug/l
 RT: 7.64 min Scan# 2010
 Delta R.T. -0.00 min
 Lab File: VU028071.D
 Acq: 12 Nov 2018 17:45

Instrument :
 MSVOA_U
 ClientSampled :
 SB-13-S

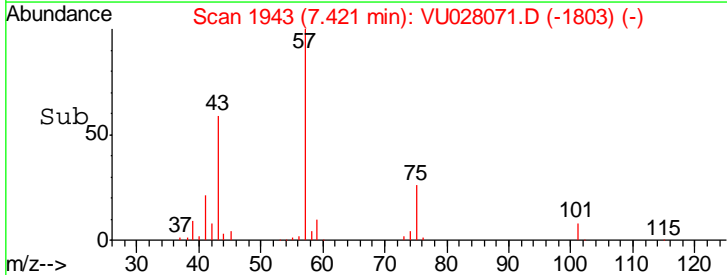
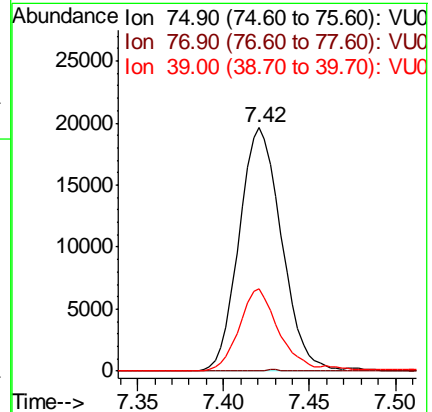
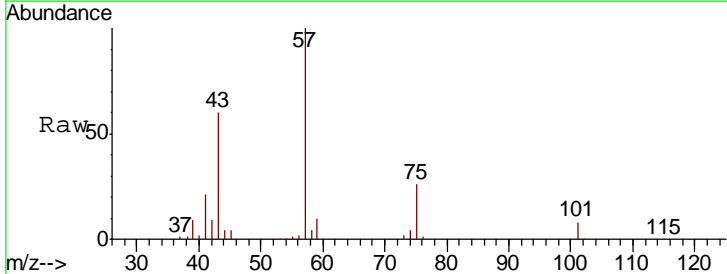
Tgt Ion: 92 Resp: 2168
 Ion Ratio Lower Upper
 92 100
 91 171.0 141.2 211.8

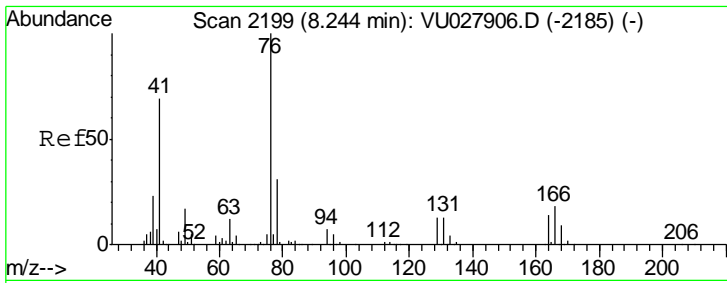


#54

cis-1,3-Dichloropropene
 Concen: 8.060 ug/l
 RT: 7.42 min Scan# 1943
 Delta R.T. 0.15 min
 Lab File: VU028071.D
 Acq: 12 Nov 2018 17:45

Tgt Ion: 75 Resp: 33548
 Ion Ratio Lower Upper
 75 100
 77 0.0 24.6 37.0#
 39 33.6 42.6 64.0#

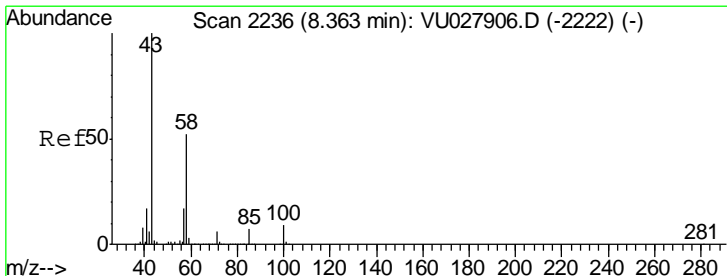
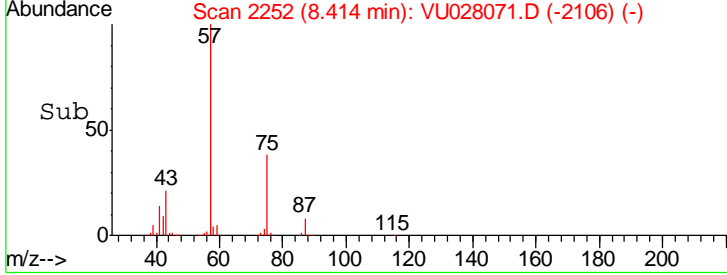
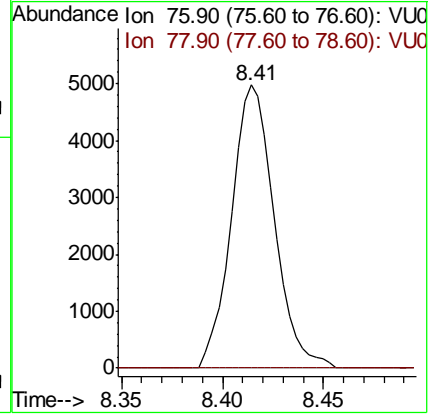
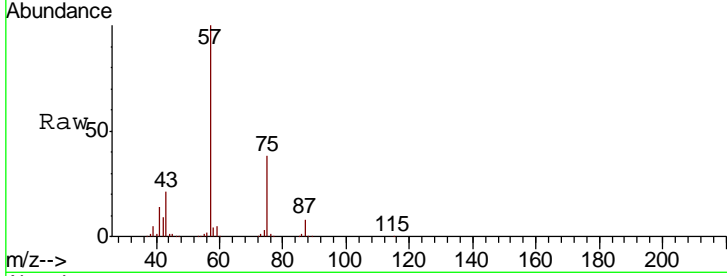




#57
 1,3-Dichloropropane
 Concen: 1.603 ug/l
 RT: 8.41 min Scan# 2252
 Delta R.T. 0.17 min
 Lab File: VU028071.D
 Acq: 12 Nov 2018 17:45

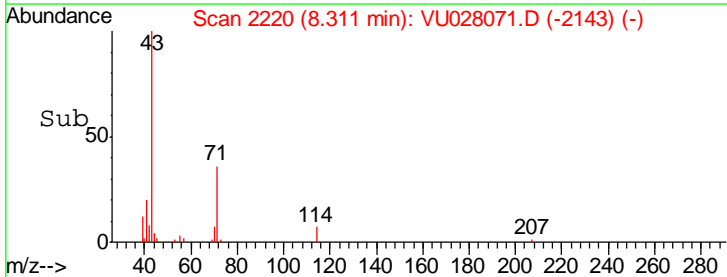
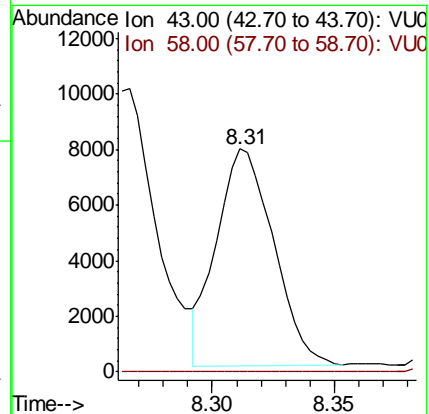
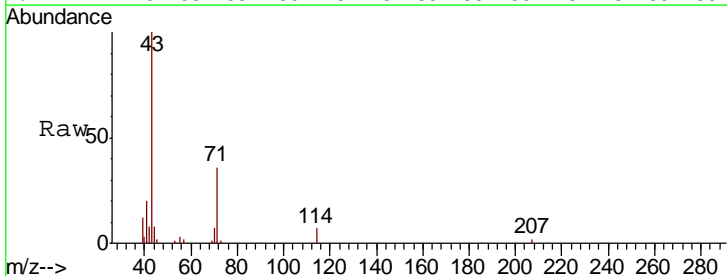
Instrument : MSVOA_U
 ClientSampled : SB-13-S

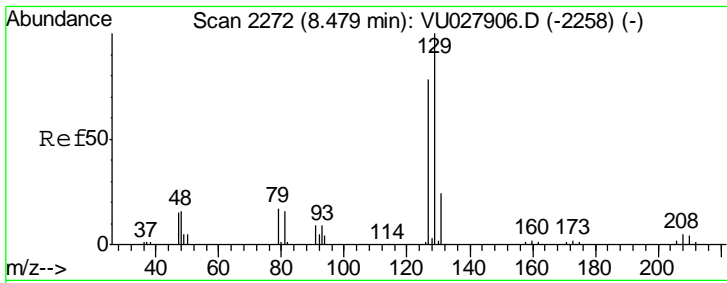
Tgt Ion: 76 Resp: 7380
 Ion Ratio Lower Upper
 76 100
 78 0.0 25.3 37.9#



#59
 2-Hexanone
 Concen: 3.105 ug/l
 RT: 8.31 min Scan# 2220
 Delta R.T. -0.05 min
 Lab File: VU028071.D
 Acq: 12 Nov 2018 17:45

Tgt Ion: 43 Resp: 12729
 Ion Ratio Lower Upper
 43 100
 58 0.0 25.8 77.3#

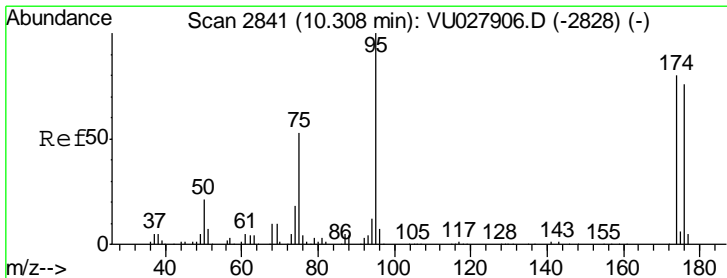
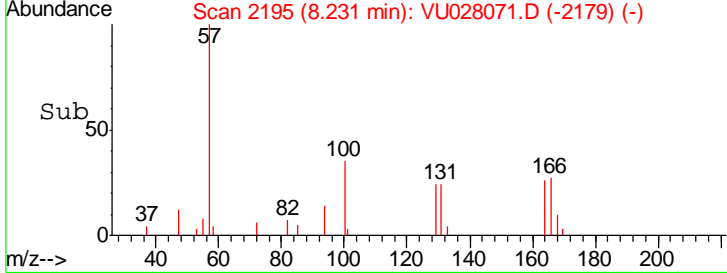
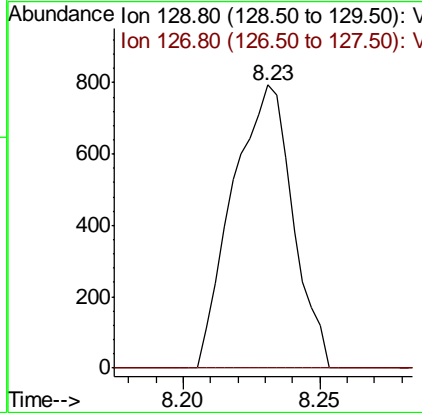
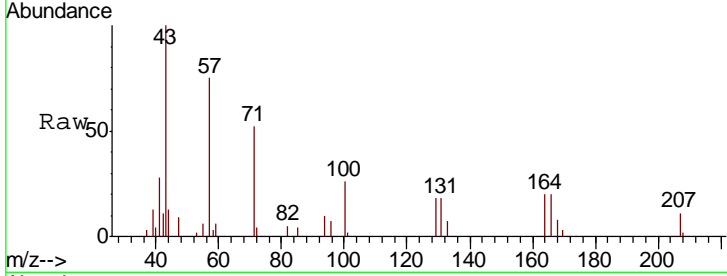




#60
 Dibromochloromethane
 Concen: 0.508 ug/l
 RT: 8.23 min Scan# 2195
 Delta R.T. -0.25 min
 Lab File: VU028071.D
 Acq: 12 Nov 2018 17:45

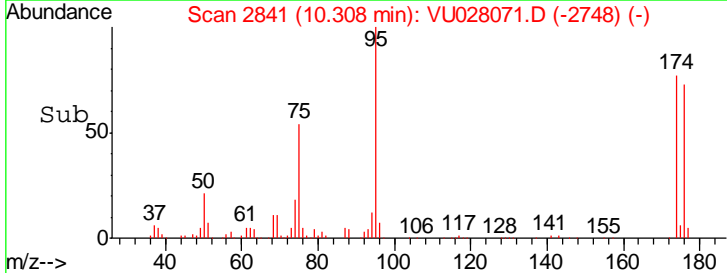
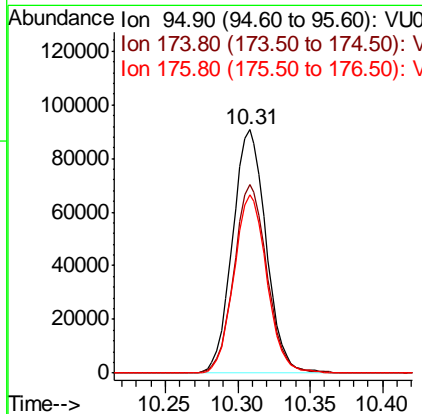
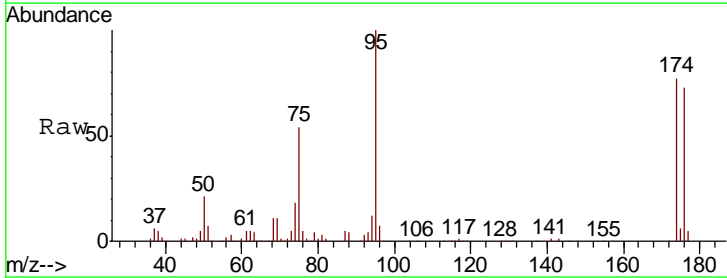
Instrument : MSVOA_U
 ClientSampled : SB-13-S

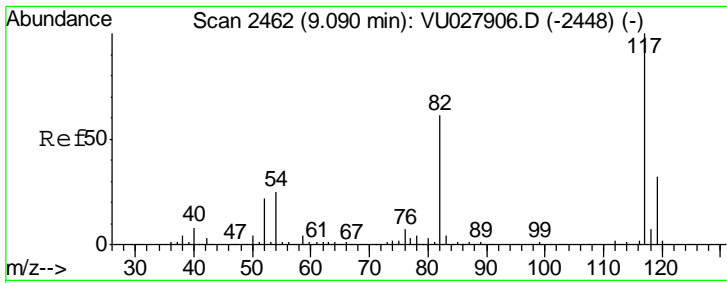
Tgt Ion	Resp	Lower	Upper
129	1214		
127	0.0	39.2	117.6#



#62
 4-Bromofluorobenzene
 Concen: 49.119 ug/l
 RT: 10.31 min Scan# 2841
 Delta R.T. -0.00 min
 Lab File: VU028071.D
 Acq: 12 Nov 2018 17:45

Tgt Ion	Resp	Lower	Upper
95	145648		
174	76.8	0.0	156.4
176	72.4	0.0	150.8

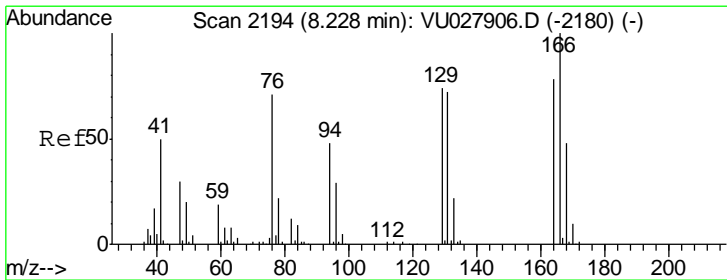
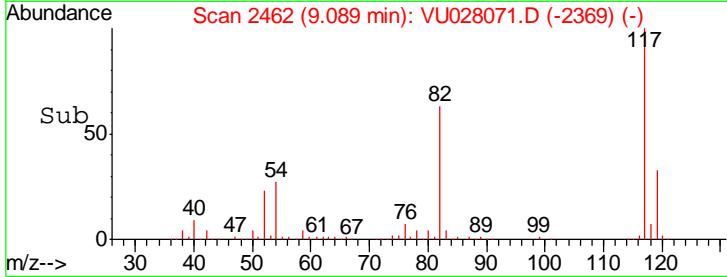
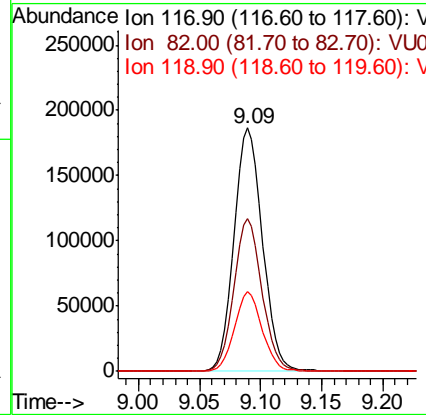
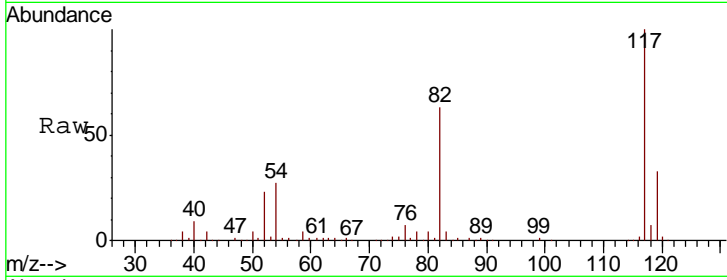




#63
 Chlorobenzene-d5
 Concen: 50.000 ug/l
 RT: 9.09 min Scan# 2462
 Delta R.T. -0.00 min
 Lab File: VU028071.D
 Acq: 12 Nov 2018 17:45

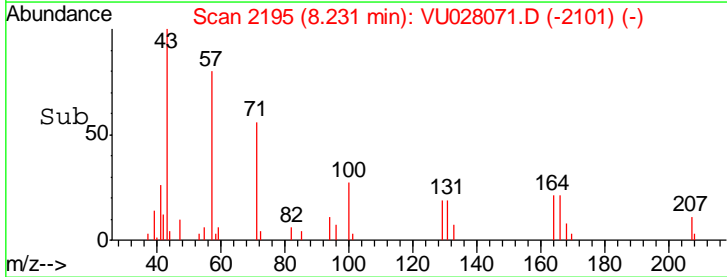
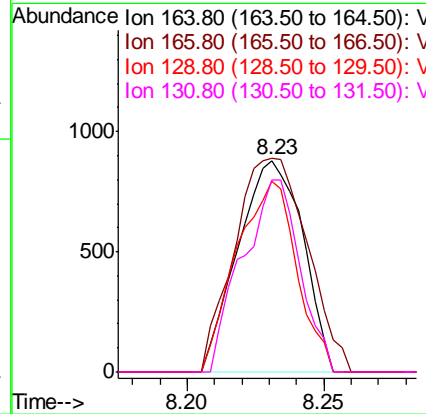
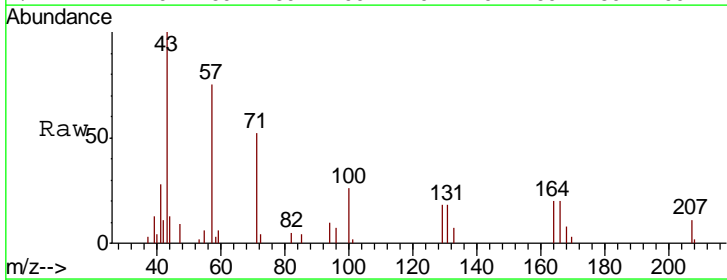
Instrument :
 MSVOA_U
 ClientSampled :
 SB-13-S

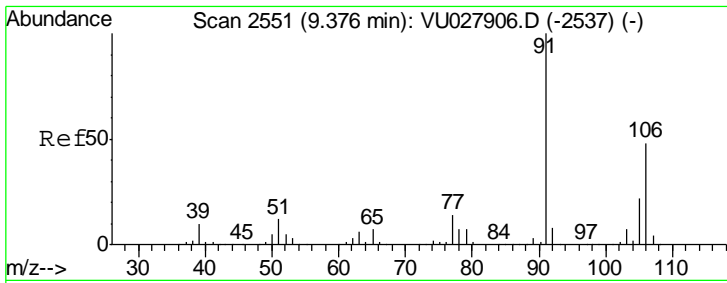
Tgt Ion	Resp	Lower	Upper
117	100		
82	62.7	48.6	73.0
119	32.5	25.8	38.8



#64
 Tetrachloroethene
 Concen: 0.734 ug/l
 RT: 8.23 min Scan# 2195
 Delta R.T. 0.00 min
 Lab File: VU028071.D
 Acq: 12 Nov 2018 17:45

Tgt Ion	Resp	Lower	Upper
164	100		
166	101.1	102.1	153.1#
129	90.2	75.9	113.9
131	91.0	73.0	109.6

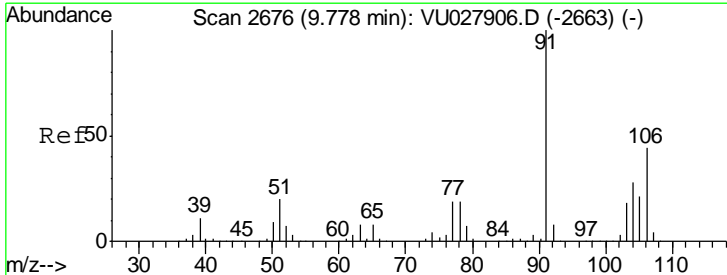
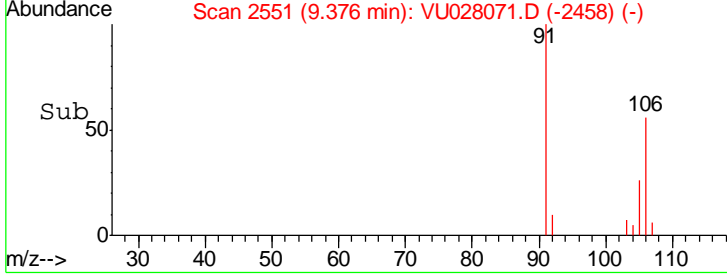
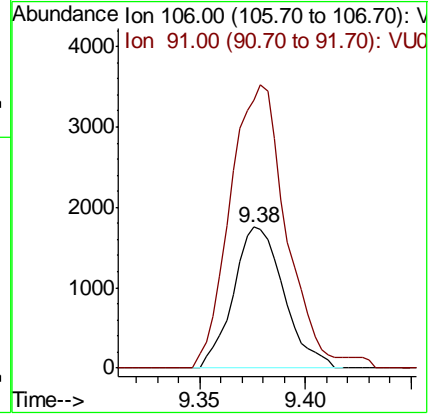
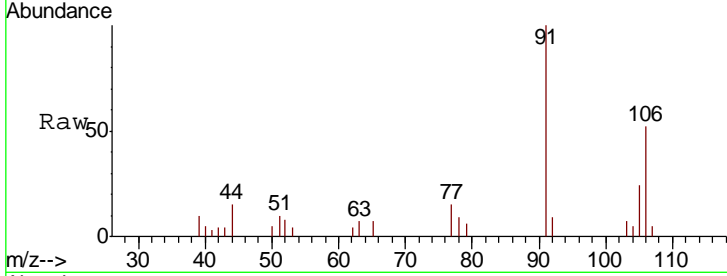




#68
 m/p-Xylenes
 Concen: 0.679 ug/l
 RT: 9.38 min Scan# 2551
 Delta R.T. -0.00 min
 Lab File: VU028071.D
 Acq: 12 Nov 2018 17:45

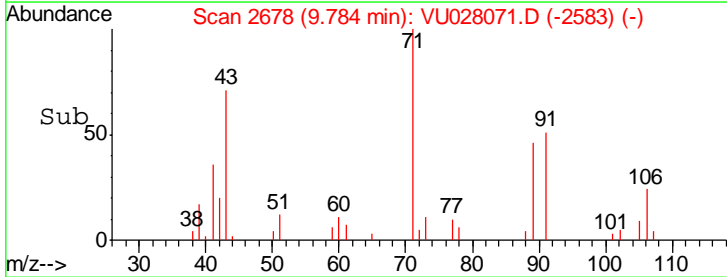
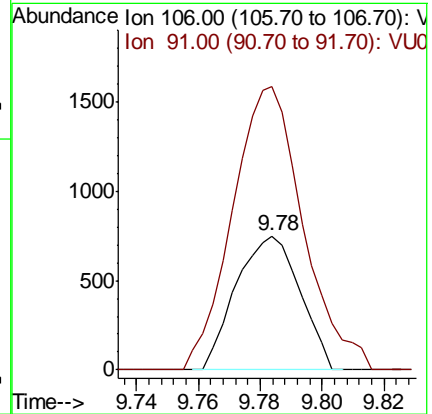
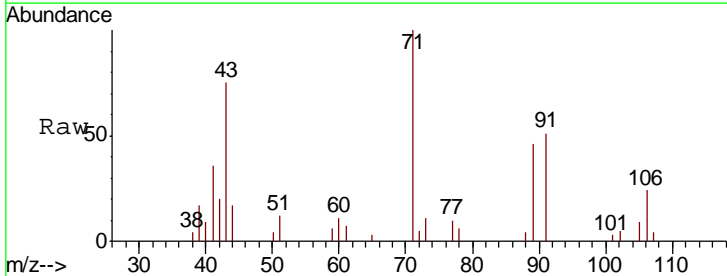
Instrument : MSVOA_U
 ClientSampled : SB-13-S

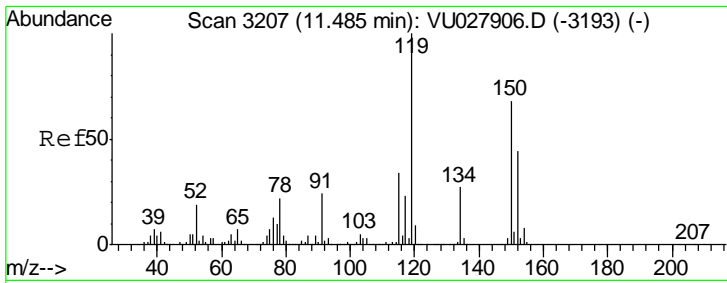
Tgt Ion:106 Resp: 2916
 Ion Ratio Lower Upper
 106 100
 91 221.7 168.2 252.4



#69
 o-Xylene
 Concen: 0.248 ug/l
 RT: 9.78 min Scan# 2678
 Delta R.T. 0.01 min
 Lab File: VU028071.D
 Acq: 12 Nov 2018 17:45

Tgt Ion:106 Resp: 1075
 Ion Ratio Lower Upper
 106 100
 91 234.2 111.1 333.4

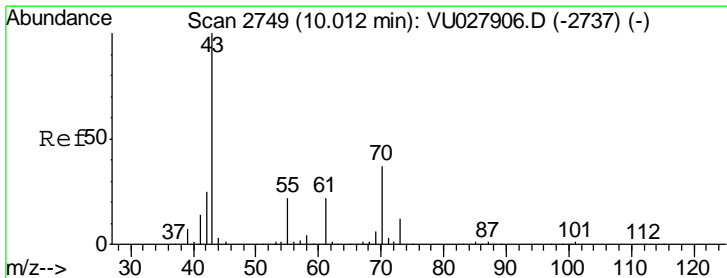
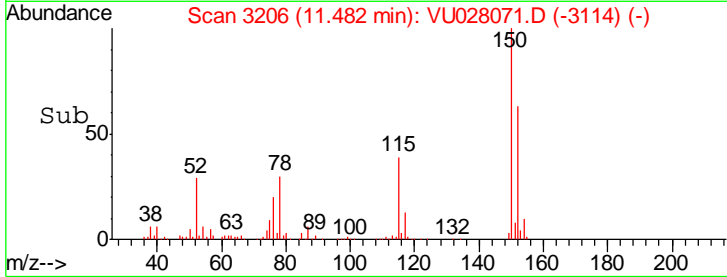
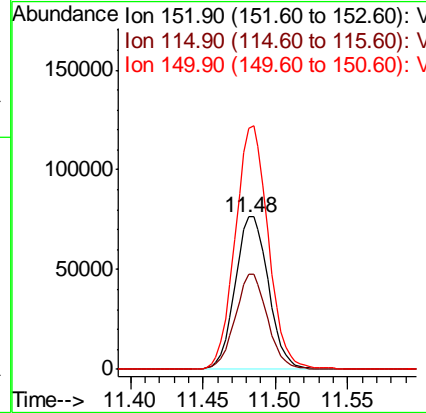
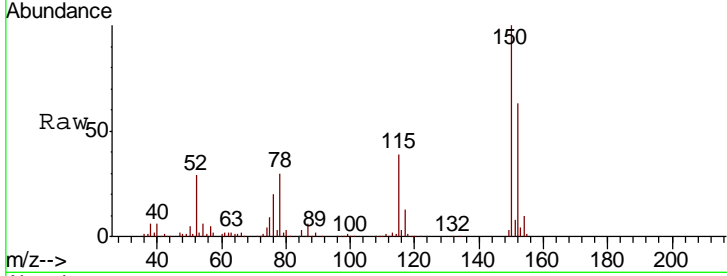




#72
 1,4-Dichlorobenzene-d4
 Concen: 50.000 ug/l
 RT: 11.48 min Scan# 3206
 Delta R.T. -0.00 min
 Lab File: VU028071.D
 Acq: 12 Nov 2018 17:45

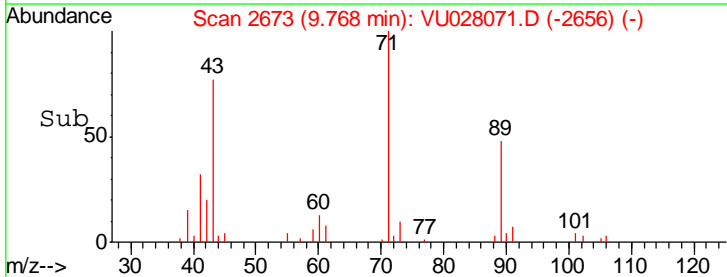
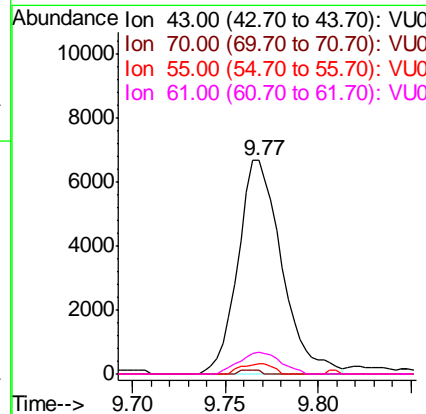
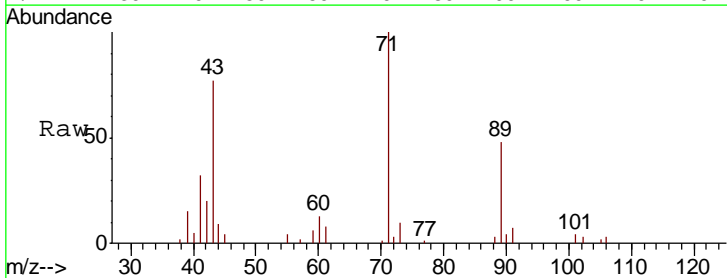
Instrument :
 MSVOA_U
 ClientSampled :
 SB-13-S

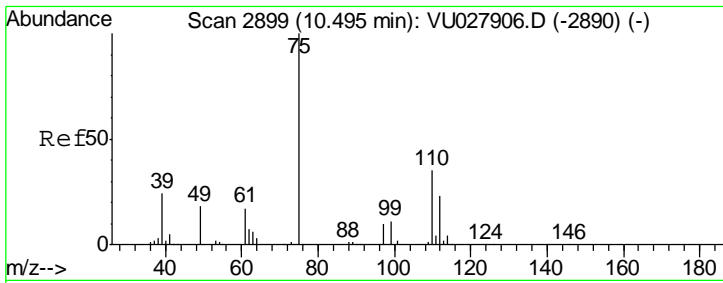
Tgt Ion	Resp	Lower	Upper
152	100		
115	60.4	43.0	129.0
150	158.4	0.0	349.4



#74
 N-amyl acetate
 Concen: 1.918 ug/l
 RT: 9.77 min Scan# 2673
 Delta R.T. -0.24 min
 Lab File: VU028071.D
 Acq: 12 Nov 2018 17:45

Tgt Ion	Resp	Lower	Upper
43	100		
70	0.9	29.2	43.8#
55	3.5	17.8	26.6#
61	9.7	17.8	26.8#

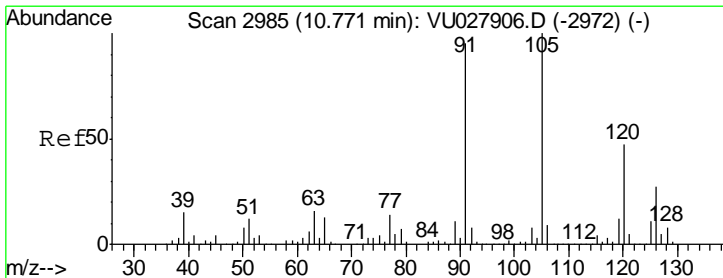
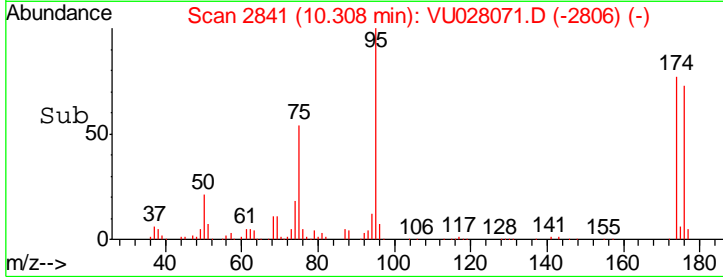
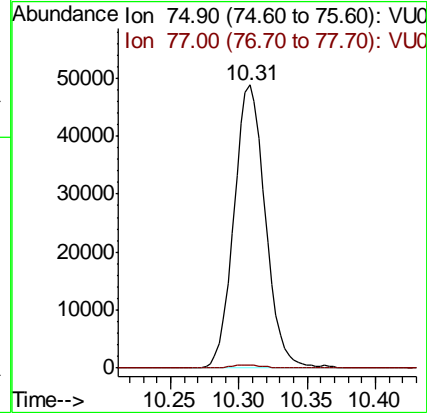
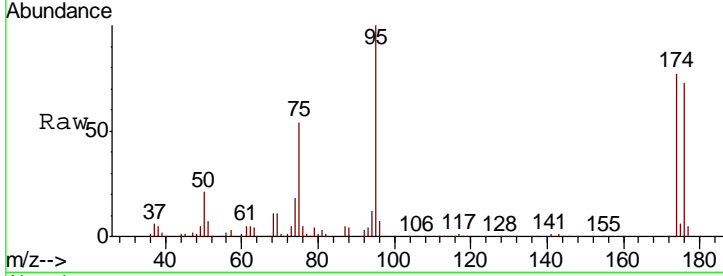




#76
 1,2,3-Trichloropropane
 Concen: 23.377 ug/l
 RT: 10.31 min Scan# 2841
 Delta R.T. -0.19 min
 Lab File: VU028071.D
 Acq: 12 Nov 2018 17:45

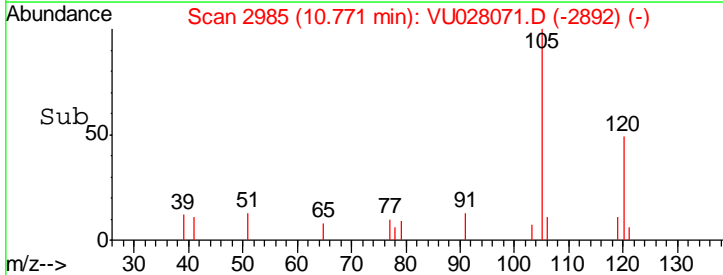
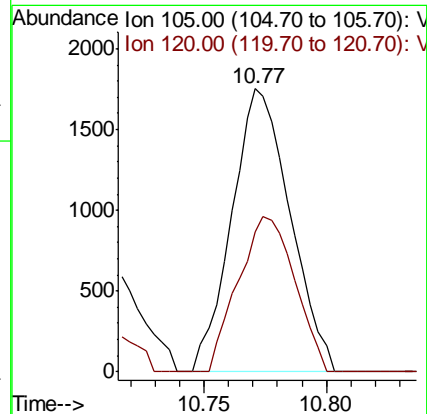
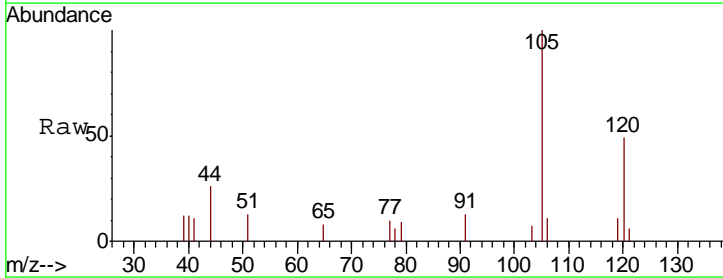
Instrument :
 MSVOA_U
 ClientSampled :
 SB-13-S

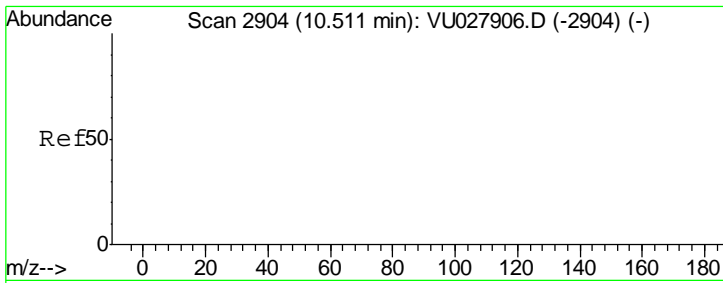
Tot Ion: 75 Resp: 77990
 Ion Ratio Lower Upper
 75 100
 77 1.1 21.6 64.6#



#80
 1,3,5-Trimethylbenzene
 Concen: 0.372 ug/l
 RT: 10.77 min Scan# 2985
 Delta R.T. -0.00 min
 Lab File: VU028071.D
 Acq: 12 Nov 2018 17:45

Tgt Ion: 105 Resp: 2908
 Ion Ratio Lower Upper
 105 100
 120 53.2 23.3 69.9

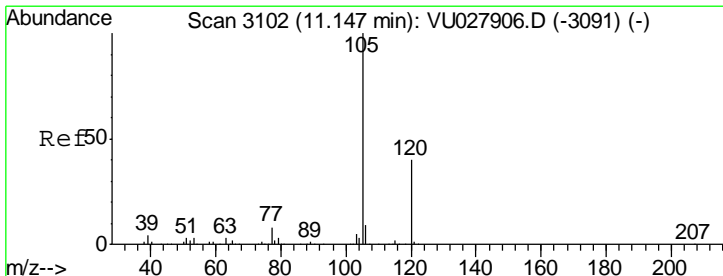
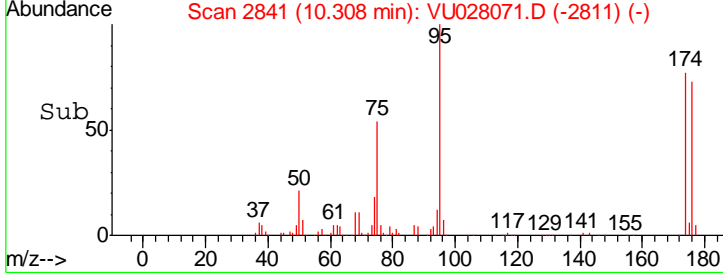
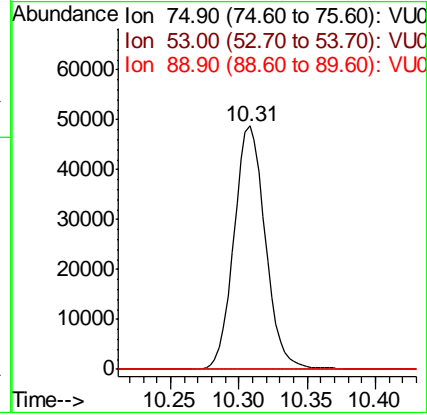
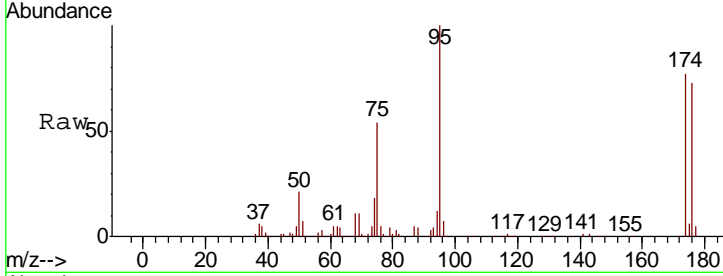




#81
 trans-1,4-Dichloro-2-butene
 Concen: 58.323 ug/l
 RT: 10.31 min Scan# 2841
 Delta R.T. -0.20 min
 Lab File: VU028071.D
 Acq: 12 Nov 2018 17:45

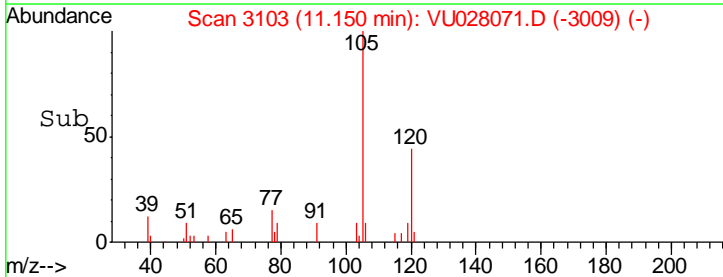
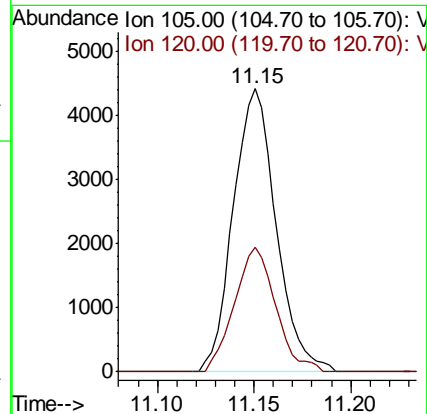
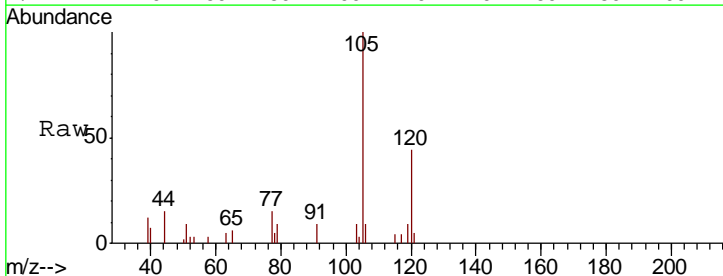
Instrument : MSVOA_U
 ClientSampled : SB-13-S

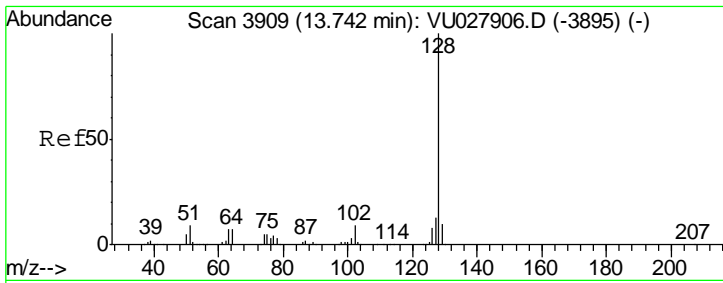
Tgt Ion	Resp	Lower	Upper
75	100		
53	0.0	0.0	0.0
89	0.0	0.0	0.0



#84
 1,2,4-Trimethylbenzene
 Concen: 0.863 ug/l
 RT: 11.15 min Scan# 3103
 Delta R.T. 0.00 min
 Lab File: VU028071.D
 Acq: 12 Nov 2018 17:45

Tgt Ion	Resp	Lower	Upper
105	100		
120	42.4	22.1	66.1





#95
 Naphthalene
 Concen: 16.773 ug/l
 RT: 13.74 min Scan# 3909
 Delta R.T. -0.00 min
 Lab File: VU028071.D
 Acq: 12 Nov 2018 17:45

Instrument : MSVOA_U
 ClientSampled : SB-13-S

Tot Ion:128 Resp: 169020

Ion	Ratio	Lower	Upper
128	100		
127	13.1	10.4	15.6
129	10.9	8.3	12.5

