

Data Path : Z:\VOASRV\HPCHEM1\MSVOA U\DATA\VU111218\
 Data File : VU028072.D
 Acq On : 12 Nov 2018 18:09
 Operator : MD/SY
 Sample : J5269-18
 Misc : 5.0mL/MSVOA U/WATER
 ALS Vial : 19 Sample Multiplier: 1

Instrument :
 MSVOA_U
 ClientSampled :
 SB-13-D

Quant Time: Nov 13 02:47:05 2018
 Quant Method : Z:\VOASRV\HPCHEM1\MSVOA_U\METHOD\82U110218W.M
 Quant Title : SW846 8260
 QLast Update : Fri Nov 02 02:28:20 2018
 Response via : Initial Calibration

| Internal Standards | R.T. | QIon | Response | Conc | Units | Dev(Min) |
|----------------------------|-------|------|----------|-------|-------|----------|
| 1) Pentafluorobenzene | 4.99 | 168 | 167840 | 50.00 | ug/l | 0.00 |
| 34) 1,4-Difluorobenzene | 5.89 | 114 | 321197 | 50.00 | ug/l | 0.00 |
| 63) Chlorobenzene-d5 | 9.09 | 117 | 283954 | 50.00 | ug/l | 0.00 |
| 72) 1,4-Dichlorobenzene-d4 | 11.48 | 152 | 106497 | 50.00 | ug/l | 0.00 |

System Monitoring Compounds

| | | | | | | |
|---------------------------|--------|-----|----------|-------|---------|------|
| 33) 1,2-Dichloroethane-d4 | 5.31 | 65 | 147474 | 59.10 | ug/l | 0.00 |
| Spiked Amount | 50.000 | | Recovery | = | 118.20% | |
| 35) Dibromofluoromethane | 4.88 | 113 | 105429 | 52.06 | ug/l | 0.00 |
| Spiked Amount | 50.000 | | Recovery | = | 104.12% | |
| 50) Toluene-d8 | 7.57 | 98 | 421260 | 53.85 | ug/l | 0.00 |
| Spiked Amount | 50.000 | | Recovery | = | 107.70% | |
| 62) 4-Bromofluorobenzene | 10.31 | 95 | 132227 | 45.82 | ug/l | 0.00 |
| Spiked Amount | 50.000 | | Recovery | = | 91.64% | |

Target Compounds

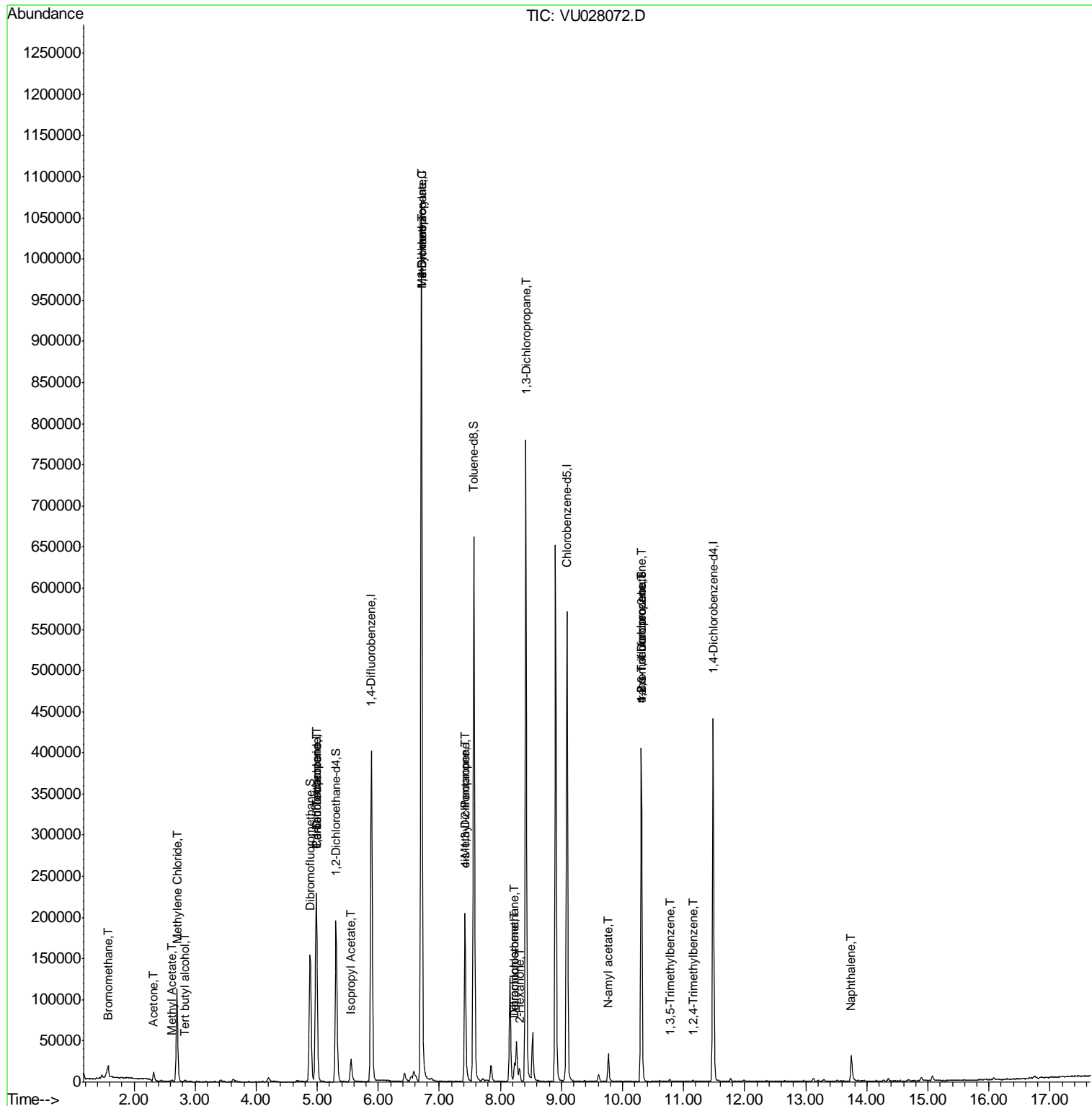
| | | | | | Qvalue | |
|--------------------------------|-------|-----|-------|-----------|--------|-------|
| 5) Bromomethane | 1.57 | 94 | 198 | 0.232 | ug/l | # 3 |
| 11) Tert butyl alcohol | 2.84 | 59 | 1167 | 1.767 | ug/l | # 73 |
| 13) Acrolein | 2.20 | 56 | 39 | Below Cal | | # 15 |
| 16) Acetone | 2.32 | 43 | 11526 | 7.445 | ug/l | 98 |
| 18) Methyl Acetate | 2.62 | 43 | 2190 | 0.514 | ug/l | # 85 |
| 20) Methylene Chloride | 2.70 | 84 | 47252 | 20.903 | ug/l | 99 |
| 31) Cyclohexane | 4.98 | 56 | 3851 | Below Cal | | # 1 |
| 36) 1,1-Dichloropropene | 4.98 | 75 | 15983 | 4.751 | ug/l | # 49 |
| 38) Carbon Tetrachloride | 4.98 | 117 | 17130 | 5.746 | ug/l | # 16 |
| 43) Isopropyl Acetate | 5.55 | 43 | 33584 | 4.349 | ug/l | 99 |
| 45) 1,2-Dichloropropane | 6.71 | 63 | 1027 | 0.346 | ug/l | # 44 |
| 48) Methyl methacrylate | 6.70 | 41 | 95200 | 25.157 | ug/l | # 46 |
| 49) 1,4-Dioxane | 6.70 | 88 | 70 | 1.134 | ug/l | # 1 |
| 51) 4-Methyl-2-Pentanone | 7.42 | 43 | 79442 | 15.404 | ug/l | # 49 |
| 54) cis-1,3-Dichloropropene | 7.42 | 75 | 33349 | 8.233 | ug/l | # 59 |
| 57) 1,3-Dichloropropane | 8.41 | 76 | 6952 | 1.551 | ug/l | # 43 |
| 59) 2-Hexanone | 8.31 | 43 | 13794 | 3.458 | ug/l | # 26 |
| 60) Dibromochloromethane | 8.23 | 129 | 1444 | 0.620 | ug/l | # 10 |
| 64) Tetrachloroethene | 8.22 | 164 | 1669 | 0.906 | ug/l | # 81 |
| 74) N-amyl acetate | 9.77 | 43 | 12201 | 2.446 | ug/l | # 53 |
| 76) 1,2,3-Trichloropropane | 10.31 | 75 | 71576 | 24.571 | ug/l | # 34 |
| 80) 1,3,5-Trimethylbenzene | 10.77 | 105 | 1936 | 0.283 | ug/l | 88 |
| 81) trans-1,4-Dichloro-2-buten | 10.31 | 75 | 71576 | 61.290 | ug/l | # 100 |
| 84) 1,2,4-Trimethylbenzene | 11.15 | 105 | 1396 | 0.203 | ug/l | 99 |
| 95) Naphthalene | 13.75 | 128 | 29422 | 3.198 | ug/l | 99 |

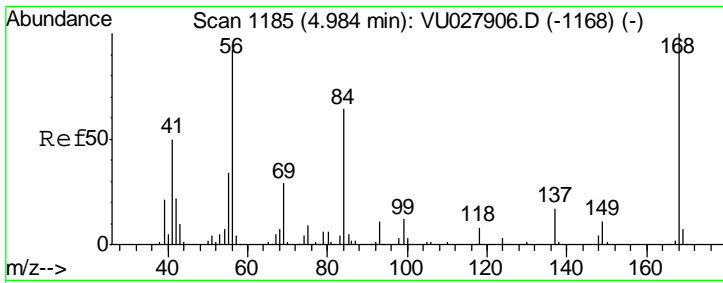
(#) = qualifier out of range (m) = manual integration (+) = signals summed

Data Path : Z:\VOASRV\HPCHEM1\MSVOA U\DATA\VU111218\
 Data File : VU028072.D
 Acq On : 12 Nov 2018 18:09
 Operator : MD/SY
 Sample : J5269-18
 Misc : 5.0mL/MSVOA U/WATER
 ALS Vial : 19 Sample Multiplier: 1

Instrument :
 MSVOA_U
 ClientSampled :
 SB-13-D

Quant Time: Nov 13 02:47:05 2018
 Quant Method : Z:\VOASRV\HPCHEM1\MSVOA_U\METHOD\82U110218W.M
 Quant Title : SW846 8260
 QLast Update : Fri Nov 02 02:28:20 2018
 Response via : Initial Calibration

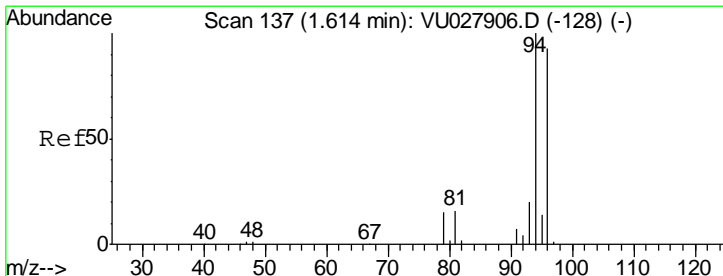
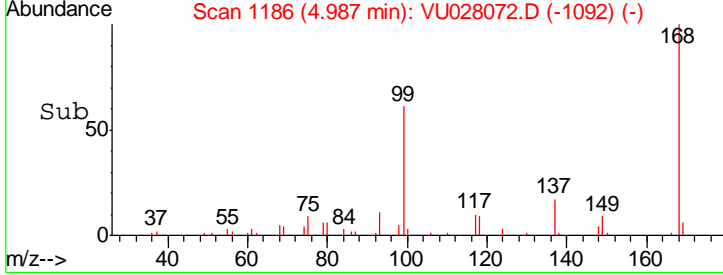
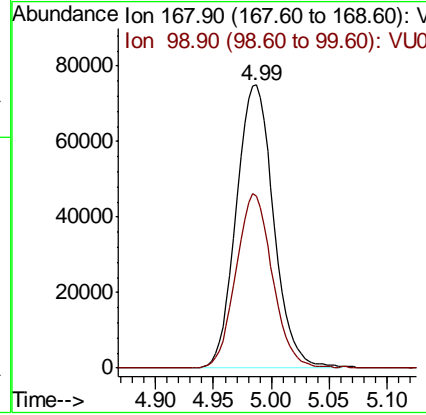
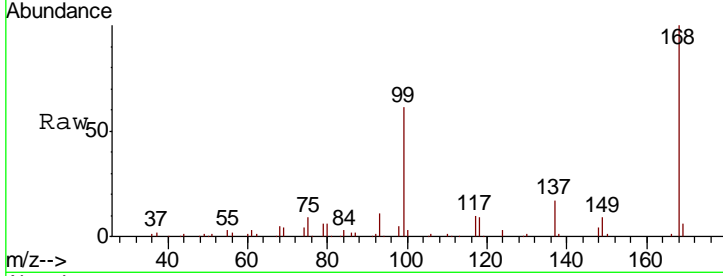




#1
 Pentafluorobenzene
 Concen: 50.000 ug/l
 RT: 4.99 min Scan# 1186
 Delta R.T. 0.00 min
 Lab File: VU028072.D
 Acq: 12 Nov 2018 18:09

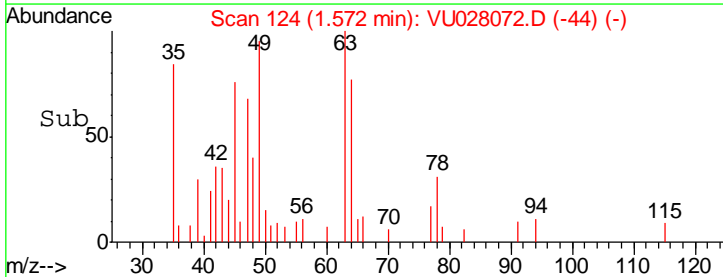
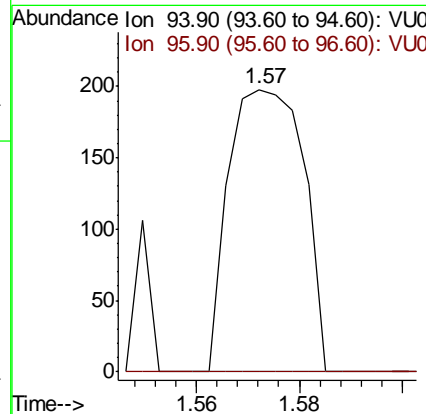
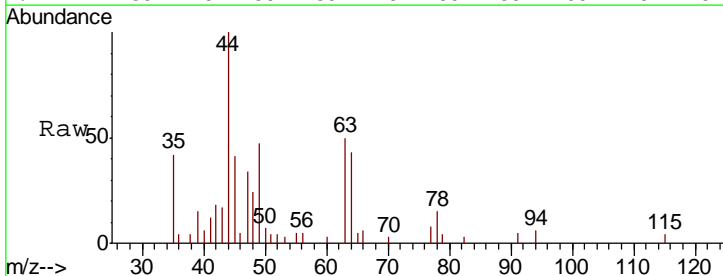
Instrument : MSVOA_U
 ClientSampled : SB-13-D

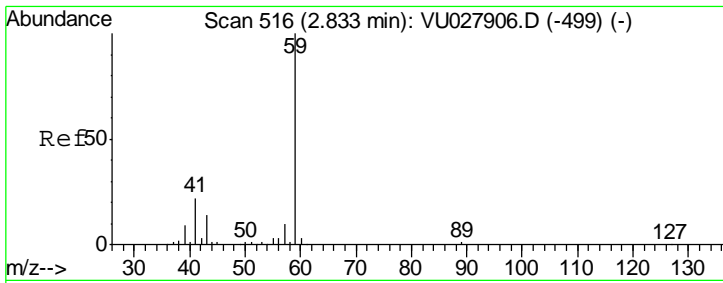
Tgt Ion: 168 Resp: 167840
 Ion Ratio Lower Upper
 168 100
 99 61.0 47.9 71.9



#5
 Bromomethane
 Concen: 0.232 ug/l
 RT: 1.57 min Scan# 124
 Delta R.T. -0.04 min
 Lab File: VU028072.D
 Acq: 12 Nov 2018 18:09

Tgt Ion: 94 Resp: 198
 Ion Ratio Lower Upper
 94 100
 96 0.0 74.8 112.2#

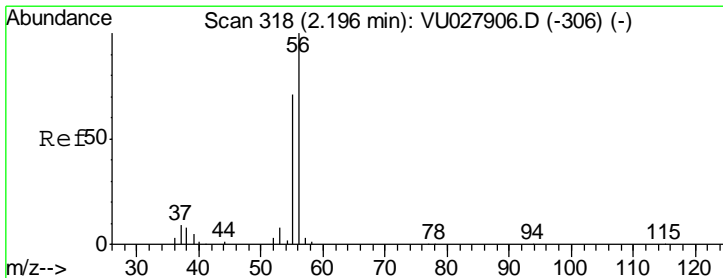
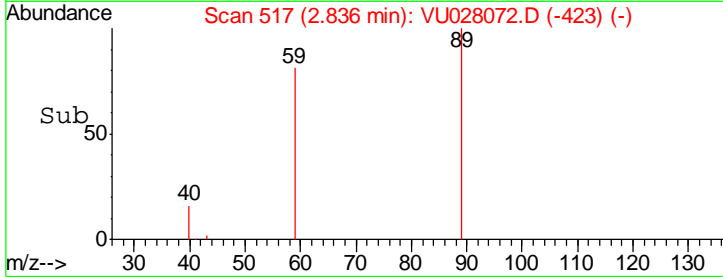
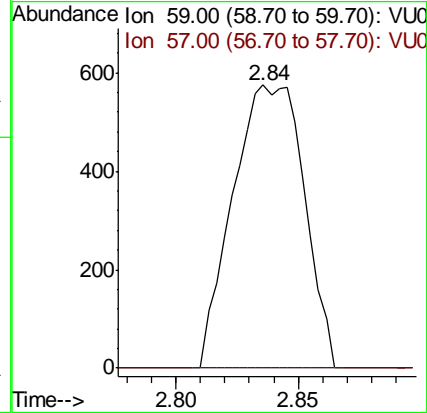
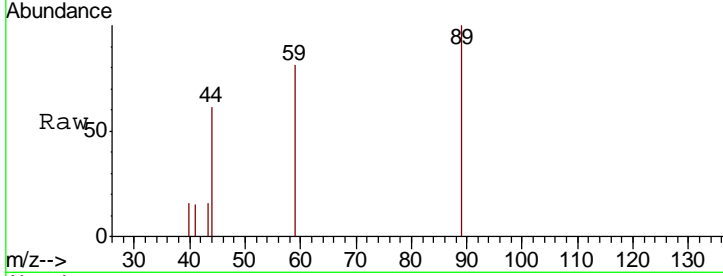




#11
 Tert butyl alcohol
 Concen: 1.767 ug/l
 RT: 2.84 min Scan# 517
 Delta R.T. 0.00 min
 Lab File: VU028072.D
 Acq: 12 Nov 2018 18:09

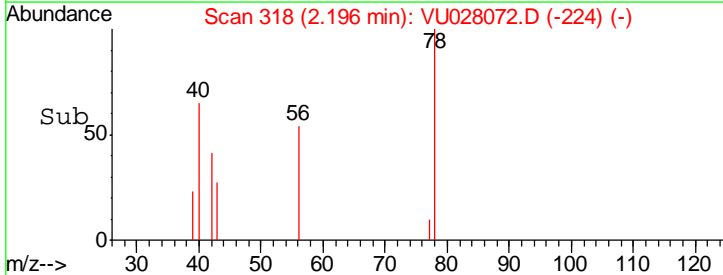
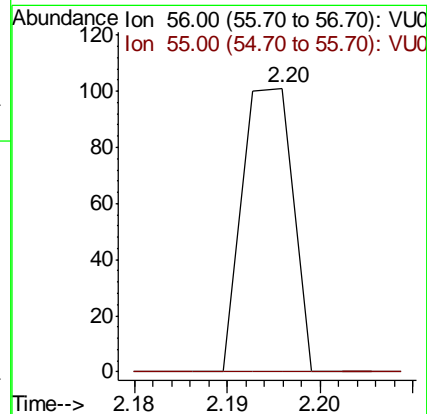
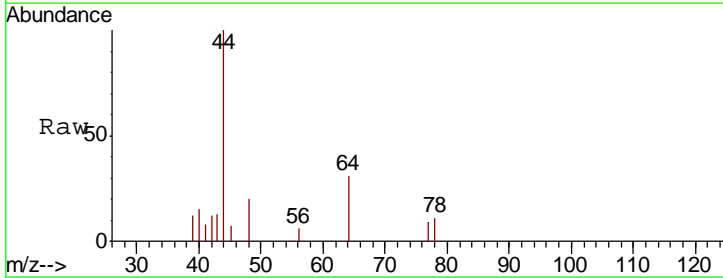
Instrument :
 MSVOA_U
 ClientSampled :
 SB-13-D

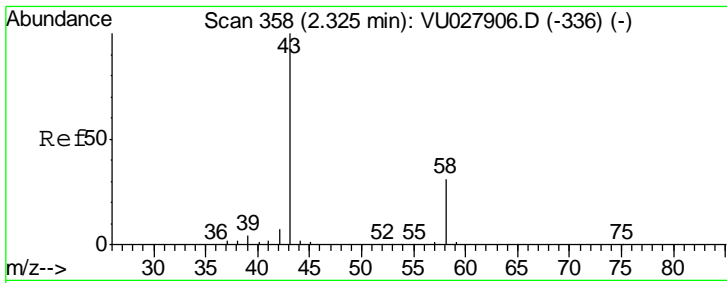
Tgt Ion: 59 Resp: 1167
 Ion Ratio Lower Upper
 59 100
 57 0.0 7.8 11.8#



#13
 Acrolein
 Concen: Below Cal
 RT: 2.20 min Scan# 318
 Delta R.T. 0.00 min
 Lab File: VU028072.D
 Acq: 12 Nov 2018 18:09

Tgt Ion: 56 Resp: 39
 Ion Ratio Lower Upper
 56 100
 55 0.0 56.2 84.4#

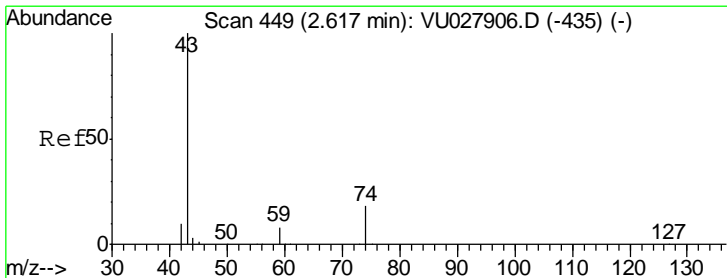
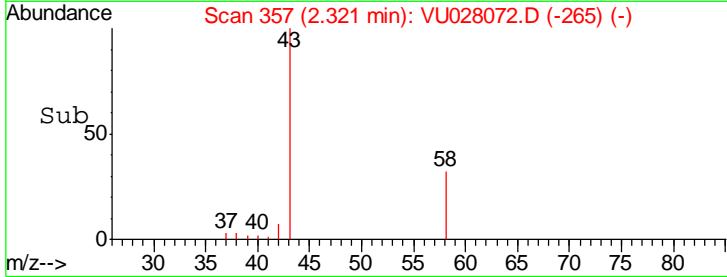
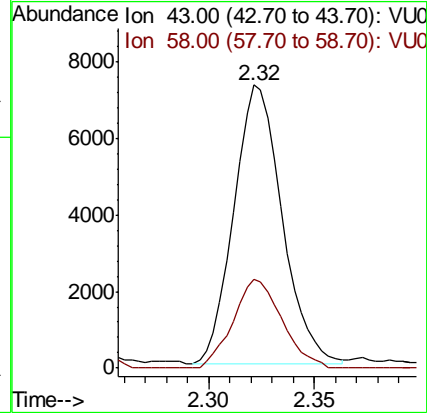
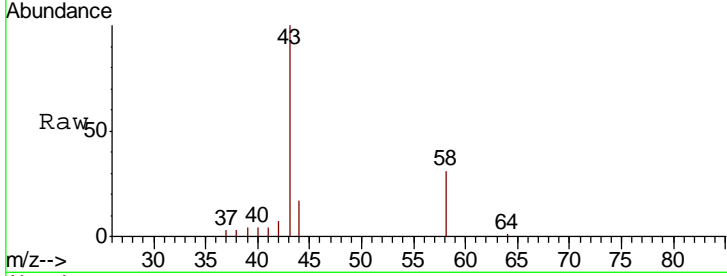




#16
 Acetone
 Concen: 7.445 ug/l
 RT: 2.32 min Scan# 357
 Delta R.T. -0.00 min
 Lab File: VU028072.D
 Acq: 12 Nov 2018 18:09

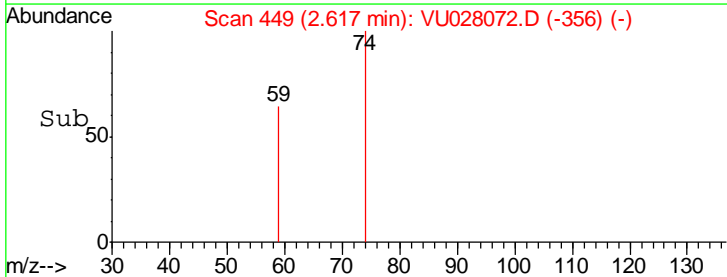
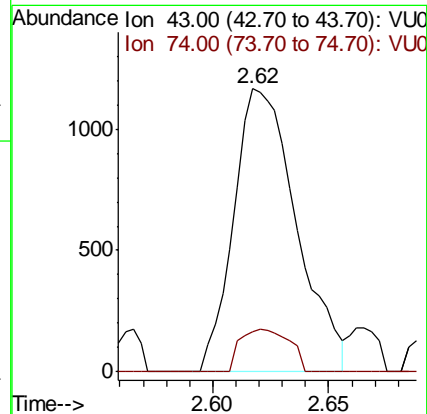
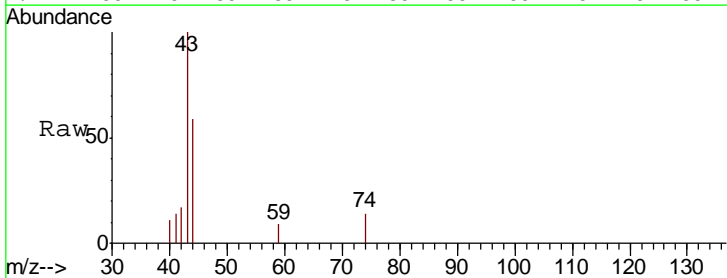
Instrument :
 MSVOA_U
 ClientSampled :
 SB-13-D

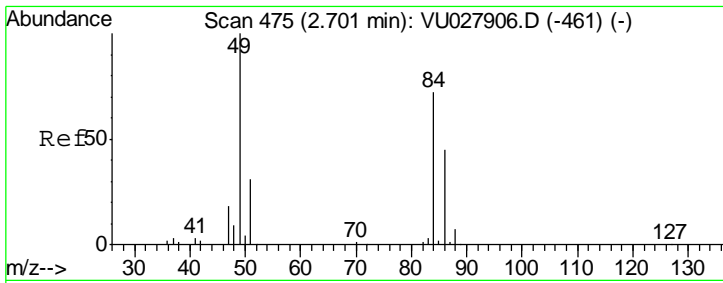
| Tgt Ion | Resp | Lower | Upper |
|---------|-------|-------|-------|
| 43 | 11526 | | |
| 58 | 32.0 | 24.6 | 37.0 |



#18
 Methyl Acetate
 Concen: 0.514 ug/l
 RT: 2.62 min Scan# 449
 Delta R.T. -0.00 min
 Lab File: VU028072.D
 Acq: 12 Nov 2018 18:09

| Tgt Ion | Resp | Lower | Upper |
|---------|------|-------|-------|
| 43 | 2190 | | |
| 74 | 11.7 | 14.9 | 22.3# |

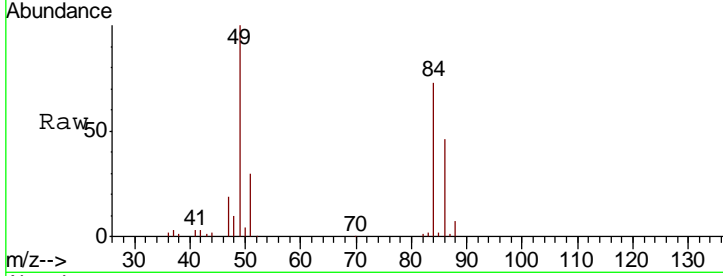




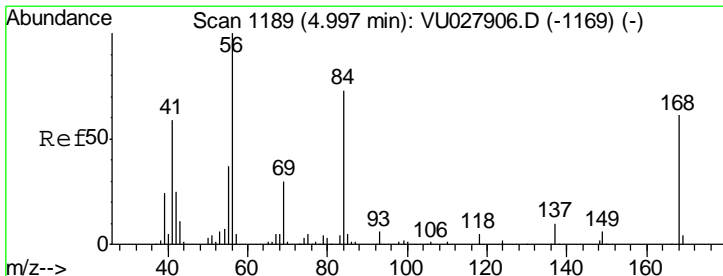
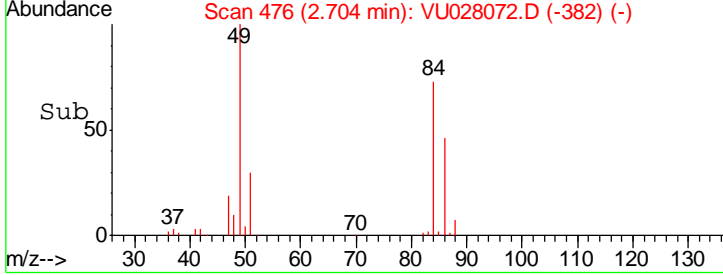
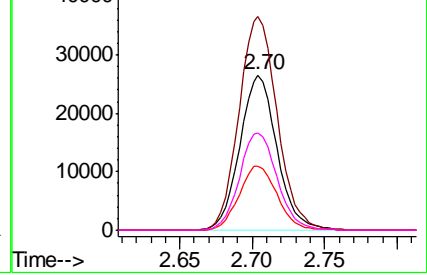
#20
Methylene Chloride
Concen: 20.903 ug/l
RT: 2.70 min Scan# 476
Delta R.T. 0.00 min
Lab File: VU028072.D
Acq: 12 Nov 2018 18:09

Instrument :
MSVOA_U
ClientSampled :
SB-13-D

| Tgt Ion | Resp | Lower | Upper |
|---------|-------|-------|-------|
| 84 | 47252 | | |
| 49 | 137.8 | 111.6 | 167.4 |
| 51 | 41.7 | 34.8 | 52.2 |
| 86 | 63.2 | 50.1 | 75.1 |

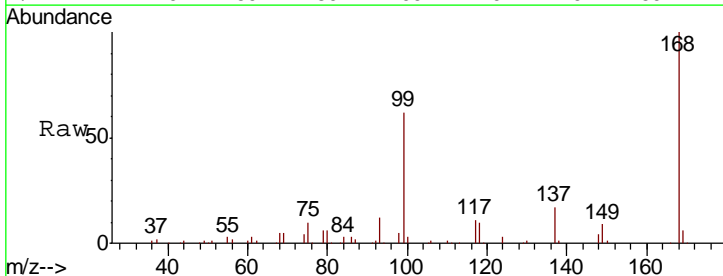


Abundance Ion 83.90 (83.60 to 84.60): VUC
Ion 48.90 (48.60 to 49.60): VUC
Ion 50.90 (50.60 to 51.60): VUC
Ion 85.90 (85.60 to 86.60): VUC

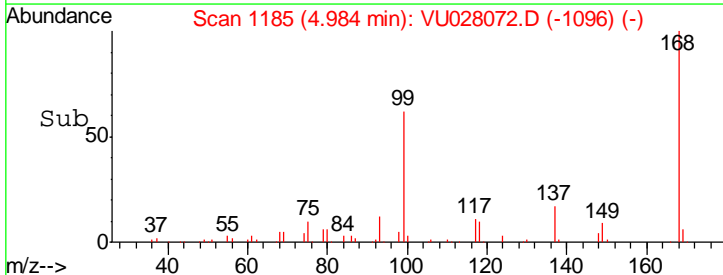
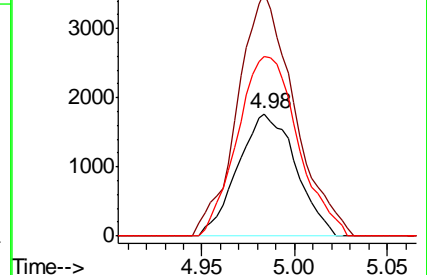


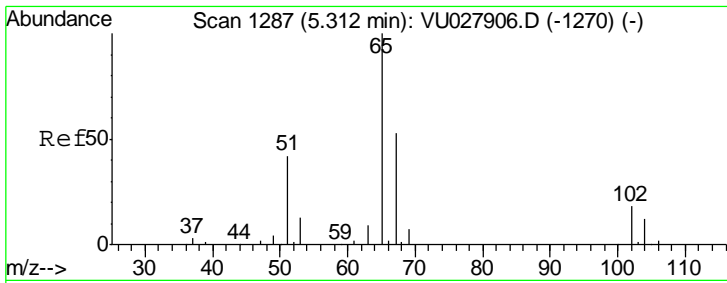
#31
Cyclohexane
Concen: Below Cal
RT: 4.98 min Scan# 1185
Delta R.T. -0.01 min
Lab File: VU028072.D
Acq: 12 Nov 2018 18:09

| Tgt Ion | Resp | Lower | Upper |
|---------|-------|-------|-------|
| 56 | 3851 | | |
| 69 | 199.4 | 23.7 | 35.5# |
| 84 | 147.6 | 58.2 | 87.4# |



Abundance Ion 56.00 (55.70 to 56.70): VUC
Ion 69.00 (68.70 to 69.70): VUC
Ion 84.00 (83.70 to 84.70): VUC

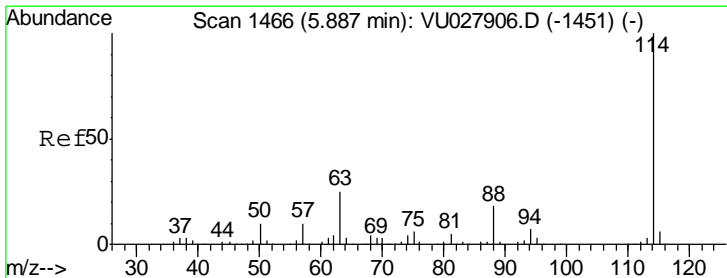
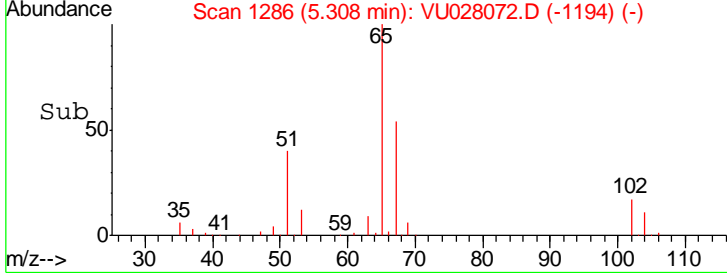
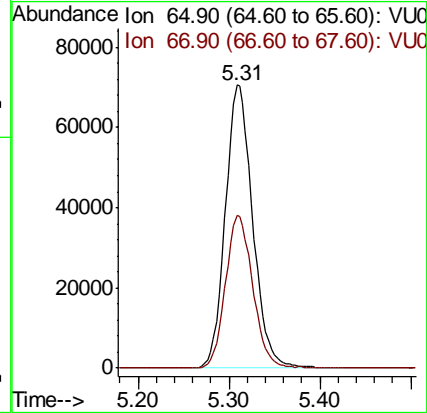
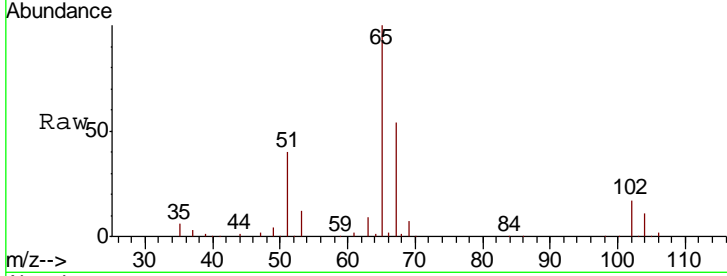




#33
 1,2-Dichloroethane-d4
 Concen: 59.099 ug/l
 RT: 5.31 min Scan# 1286
 Delta R.T. -0.00 min
 Lab File: VU028072.D
 Acq: 12 Nov 2018 18:09

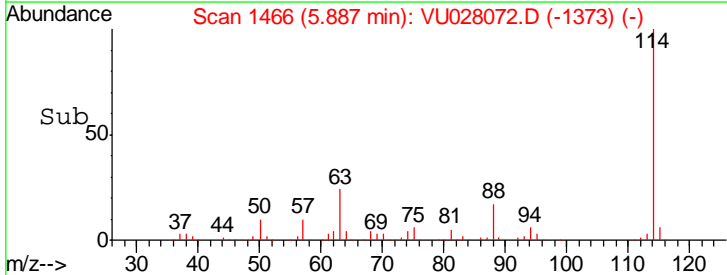
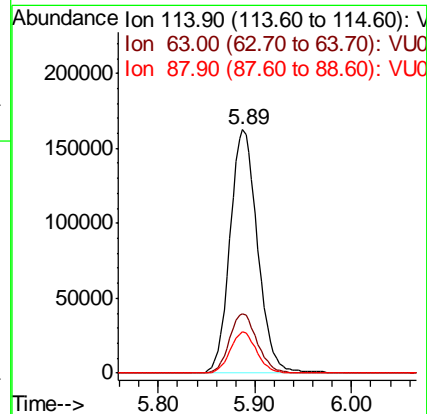
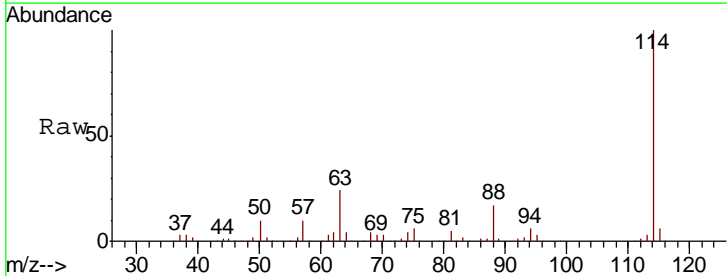
Instrument :
 MSVOA_U
 ClientSampled :
 SB-13-D

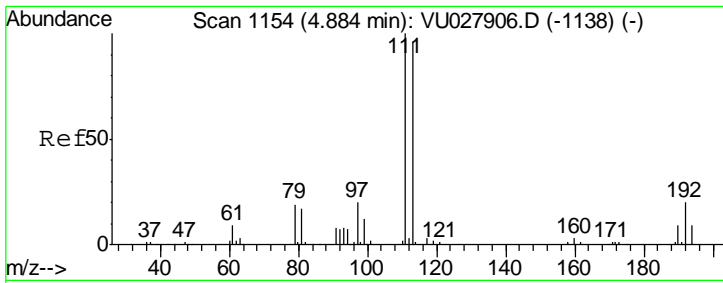
| Tgt Ion | Resp | Lower | Upper |
|---------|--------|-------|-------|
| 65 | 147474 | | |
| 67 | 53.7 | 0.0 | 109.0 |



#34
 1,4-Difluorobenzene
 Concen: 50.000 ug/l
 RT: 5.89 min Scan# 1466
 Delta R.T. -0.00 min
 Lab File: VU028072.D
 Acq: 12 Nov 2018 18:09

| Tgt Ion | Resp | Lower | Upper |
|---------|--------|-------|-------|
| 114 | 321197 | | |
| 63 | 24.5 | 0.0 | 50.8 |
| 88 | 16.8 | 0.0 | 35.8 |

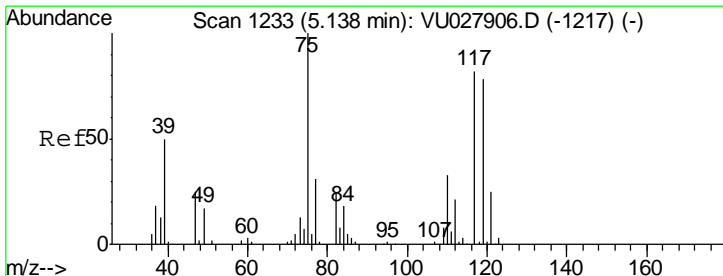
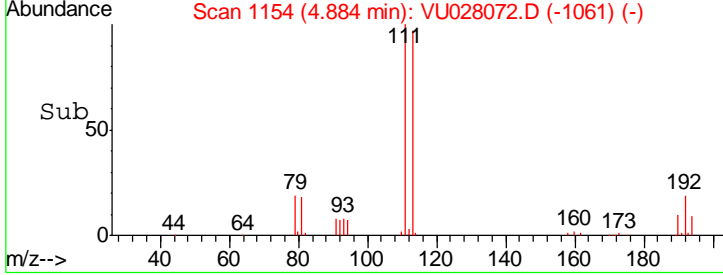
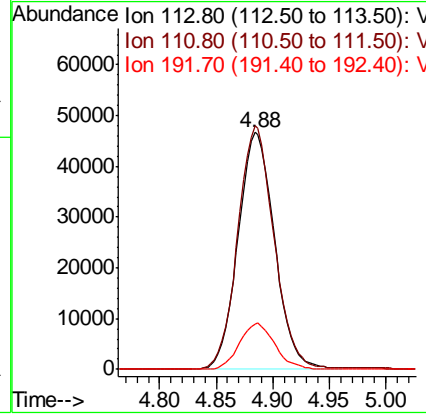
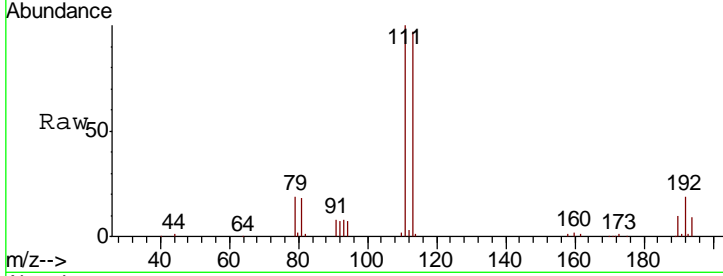




#35
 Dibromofluoromethane
 Concen: 52.059 ug/l
 RT: 4.88 min Scan# 1154
 Delta R.T. -0.00 min
 Lab File: VU028072.D
 Acq: 12 Nov 2018 18:09

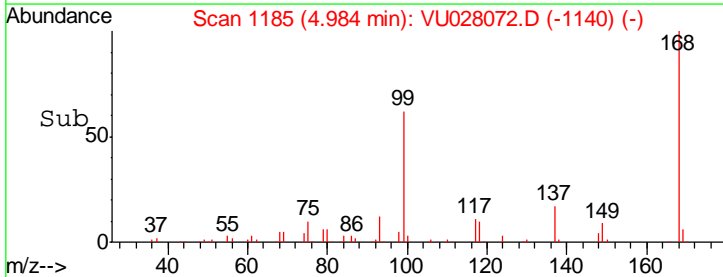
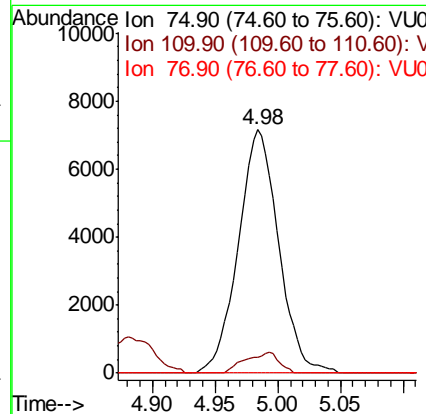
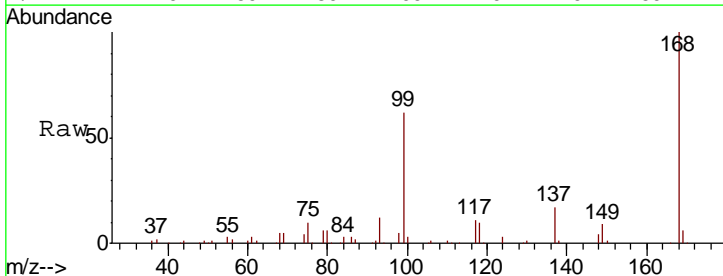
Instrument :
 MSVOA_U
 ClientSampled :
 SB-13-D

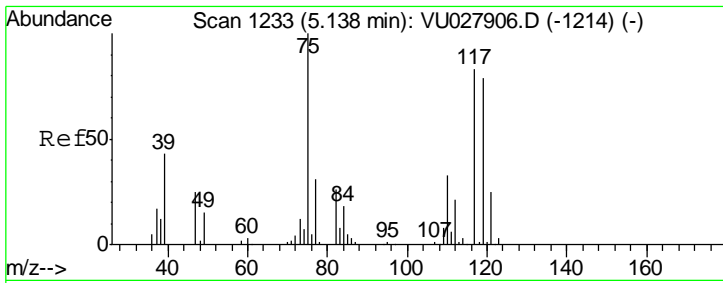
| Tgt Ion | Resp | Lower | Upper |
|---------|--------|-------|-------|
| 113 | 105429 | | |
| 113 | 100 | | |
| 111 | 101.5 | 83.0 | 124.6 |
| 192 | 18.7 | 15.6 | 23.4 |



#36
 1,1-Dichloropropene
 Concen: 4.751 ug/l
 RT: 4.98 min Scan# 1185
 Delta R.T. -0.15 min
 Lab File: VU028072.D
 Acq: 12 Nov 2018 18:09

| Tgt Ion | Resp | Lower | Upper |
|---------|-------|-------|-------|
| 75 | 15983 | | |
| 75 | 100 | | |
| 110 | 7.1 | 16.5 | 49.5# |
| 77 | 0.0 | 24.9 | 37.3# |

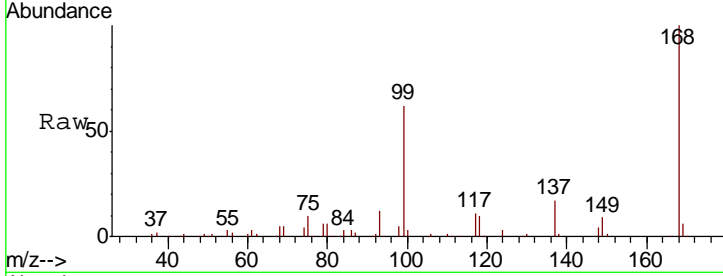




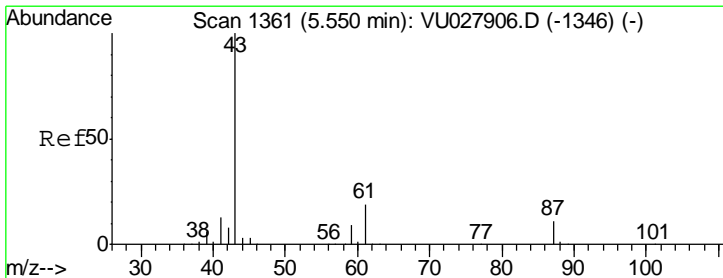
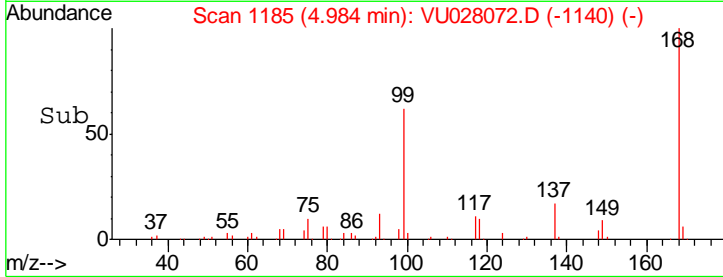
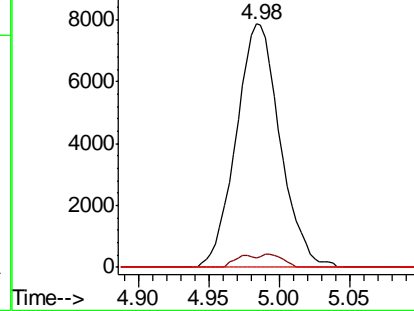
#38
 Carbon Tetrachloride
 Concen: 5.746 ug/l
 RT: 4.98 min Scan# 1185
 Delta R.T. -0.15 min
 Lab File: VU028072.D
 Acq: 12 Nov 2018 18:09

Instrument :
 MSVOA_U
 ClientSampled :
 SB-13-D

| Tgt Ion | Resp | Lower | Upper |
|---------|-------|-------|--------|
| 117 | 17130 | | |
| 119 | 4.0 | 76.0 | 114.0# |
| 121 | 0.0 | 24.5 | 36.7# |

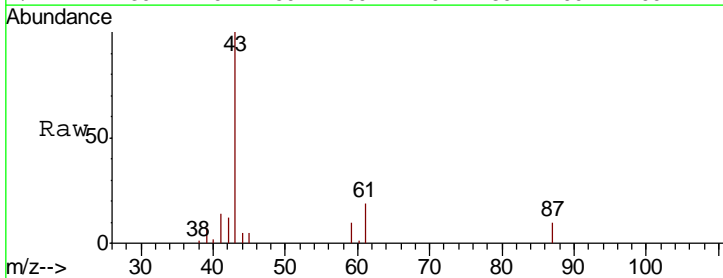


Abundance Ion 116.80 (116.50 to 117.50): V
 Ion 118.80 (118.50 to 119.50): V
 Ion 120.80 (120.50 to 121.50): V

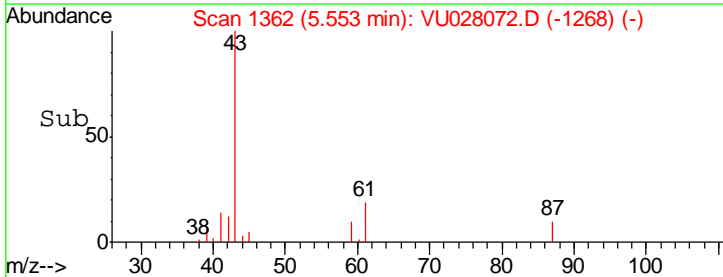
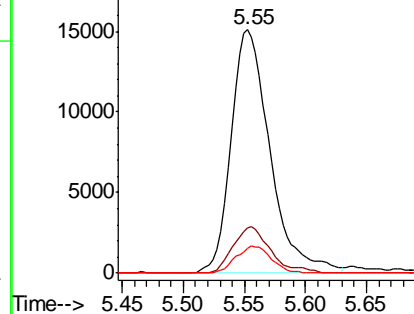


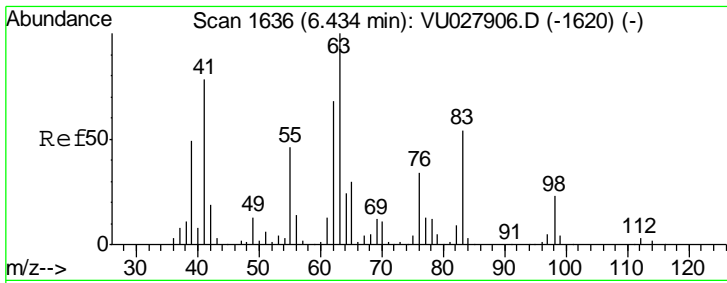
#43
 Isopropyl Acetate
 Concen: 4.349 ug/l
 RT: 5.55 min Scan# 1362
 Delta R.T. 0.00 min
 Lab File: VU028072.D
 Acq: 12 Nov 2018 18:09

| Tgt Ion | Resp | Lower | Upper |
|---------|-------|-------|-------|
| 43 | 33584 | | |
| 61 | 18.3 | 15.0 | 22.4 |
| 87 | 9.9 | 8.6 | 12.8 |



Abundance Ion 43.00 (42.70 to 43.70): VU
 Ion 61.00 (60.70 to 61.70): VU
 Ion 87.00 (86.70 to 87.70): VU

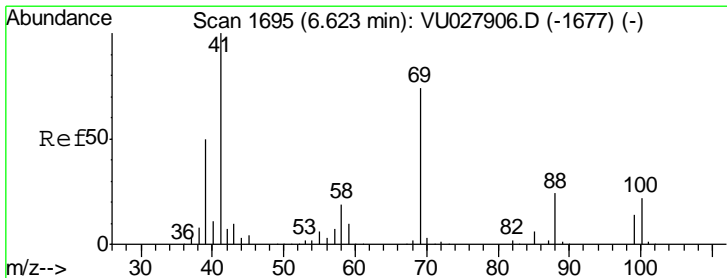
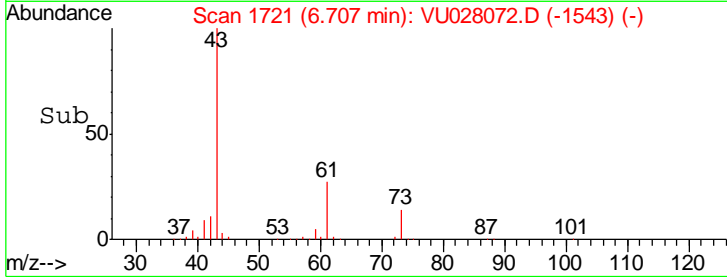
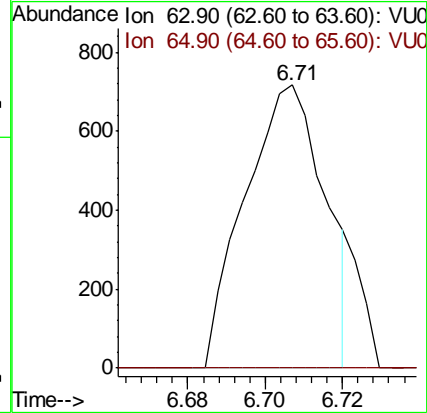
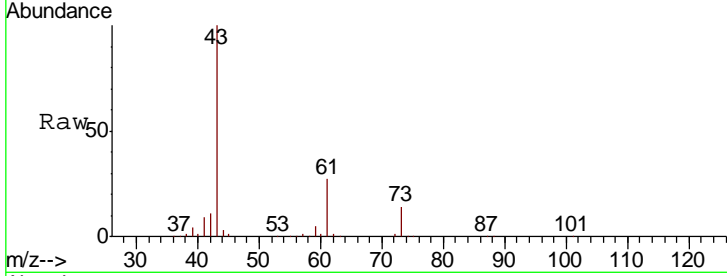




#45
 1,2-Dichloropropane
 Concen: 0.346 ug/l
 RT: 6.71 min Scan# 1721
 Delta R.T. 0.27 min
 Lab File: VU028072.D
 Acq: 12 Nov 2018 18:09

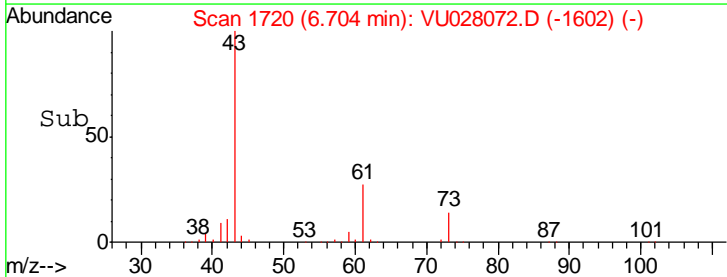
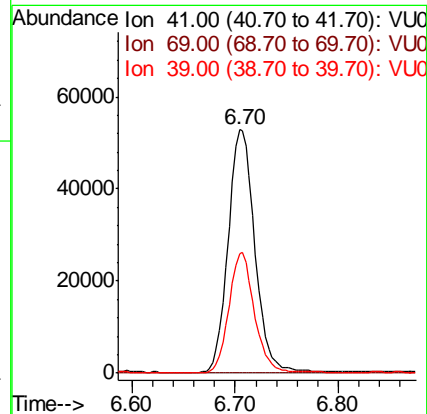
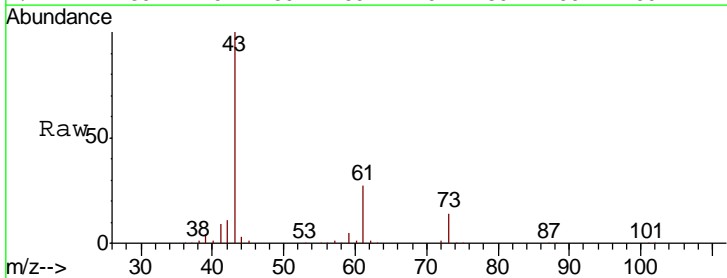
Instrument :
 MSVOA_U
 ClientSampled :
 SB-13-D

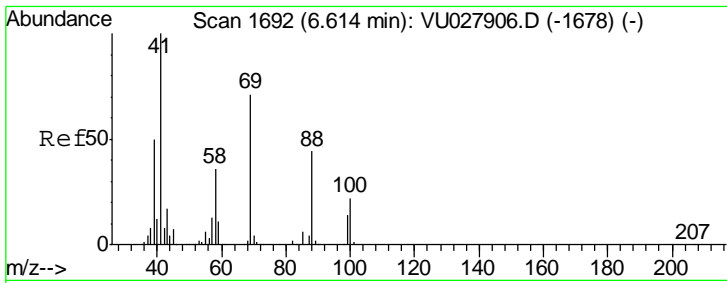
Tgt Ion: 63 Resp: 1027
 Ion Ratio Lower Upper
 63 100
 65 0.0 24.4 36.6#



#48
 Methyl methacrylate
 Concen: 25.157 ug/l
 RT: 6.70 min Scan# 1720
 Delta R.T. 0.08 min
 Lab File: VU028072.D
 Acq: 12 Nov 2018 18:09

Tgt Ion: 41 Resp: 95200
 Ion Ratio Lower Upper
 41 100
 69 0.0 59.8 89.8#
 39 47.4 40.0 60.0

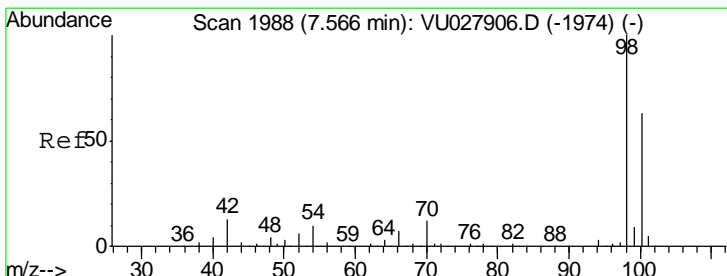
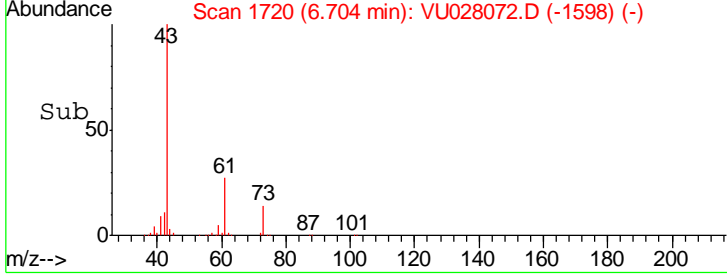
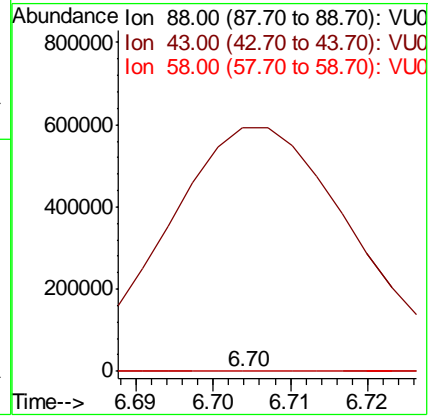
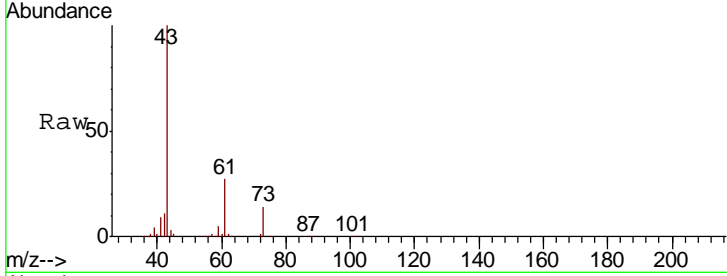




#49
 1,4-Dioxane
 Concen: 1.134 ug/l
 RT: 6.70 min Scan# 1720
 Delta R.T. 0.09 min
 Lab File: VU028072.D
 Acq: 12 Nov 2018 18:09

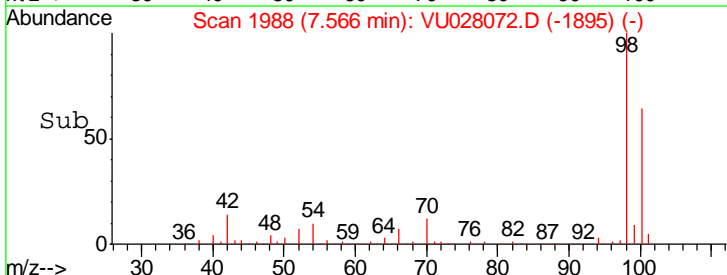
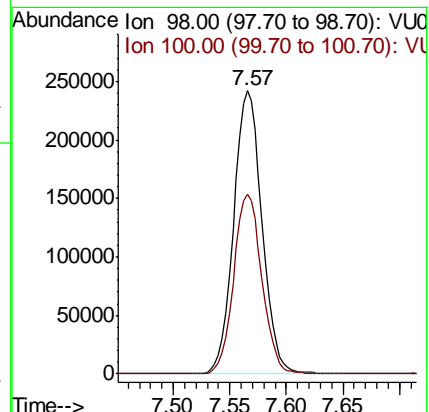
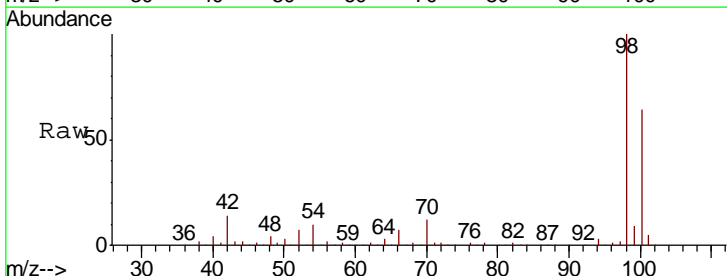
| Tgt Ion | Resp | Lower | Upper |
|---------|-----------|-------|--------|
| 88 | 100 | | |
| 43 | 1516477.1 | 30.5 | 45.7# |
| 58 | 5931.4 | 67.1 | 100.7# |

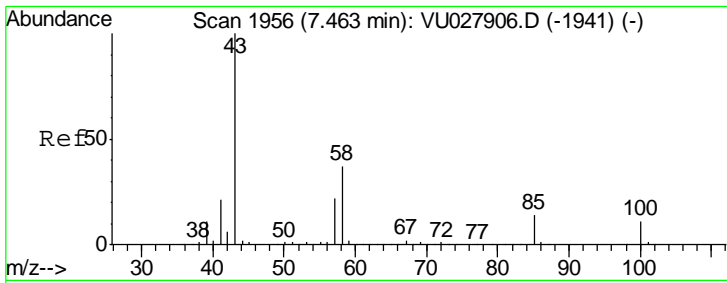
Instrument : MSVOA_U
 ClientSampled : SB-13-D



#50
 Toluene-d8
 Concen: 53.848 ug/l
 RT: 7.57 min Scan# 1988
 Delta R.T. -0.00 min
 Lab File: VU028072.D
 Acq: 12 Nov 2018 18:09

| Tgt Ion | Resp | Lower | Upper |
|---------|------|-------|-------|
| 98 | 100 | | |
| 100 | 63.4 | 50.1 | 75.1 |

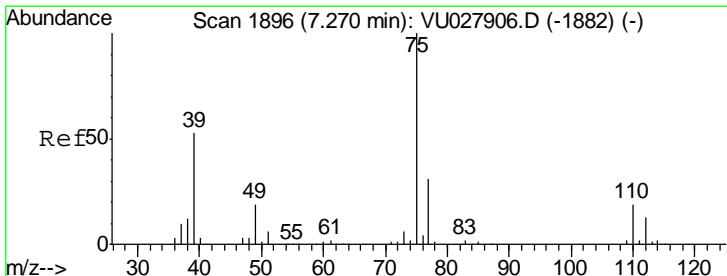
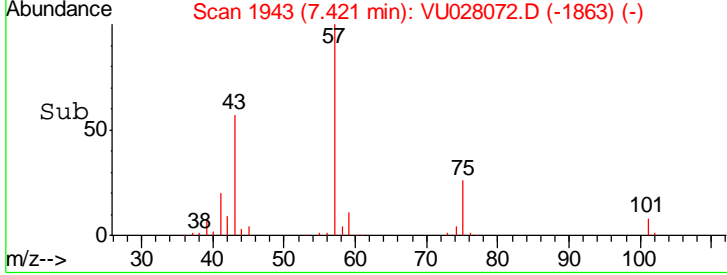
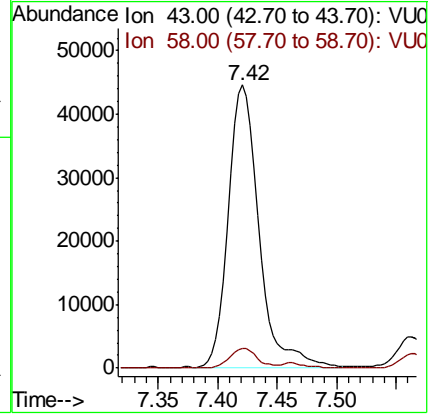
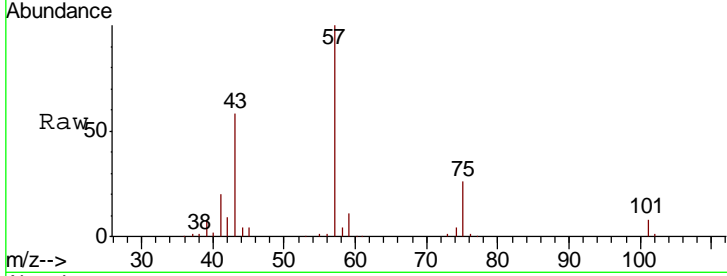




#51
 4-Methyl-2-Pentanone
 Concen: 15.404 ug/l
 RT: 7.42 min Scan# 1943
 Delta R.T. -0.04 min
 Lab File: VU028072.D
 Acq: 12 Nov 2018 18:09

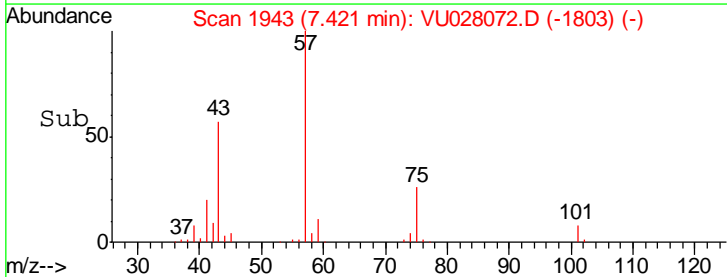
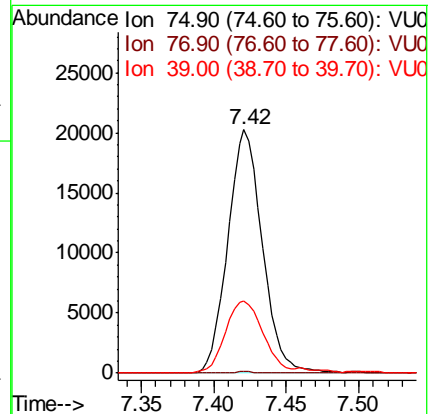
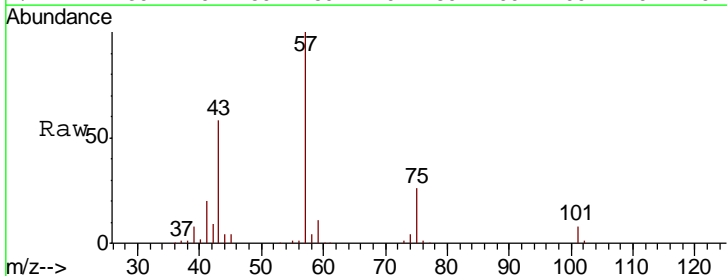
Instrument : MSVOA_U
 ClientSampleID : SB-13-D

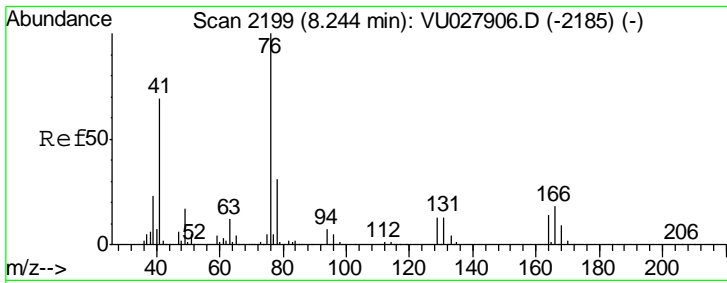
| Tgt Ion | Resp | Lower | Upper |
|---------|------|-------|-------|
| 43 | 100 | | |
| 58 | 6.3 | 29.5 | 44.3# |



#54
 cis-1,3-Dichloropropene
 Concen: 8.233 ug/l
 RT: 7.42 min Scan# 1943
 Delta R.T. 0.15 min
 Lab File: VU028072.D
 Acq: 12 Nov 2018 18:09

| Tgt Ion | Resp | Lower | Upper |
|---------|------|-------|-------|
| 75 | 100 | | |
| 77 | 0.6 | 24.6 | 37.0# |
| 39 | 29.4 | 42.6 | 64.0# |

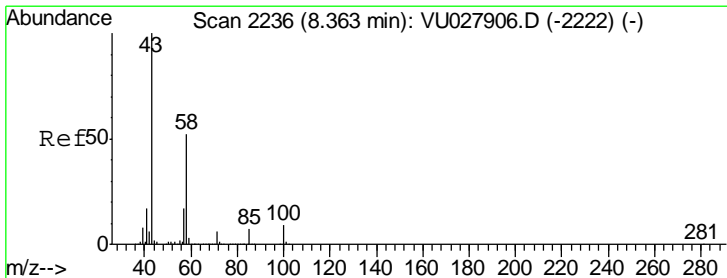
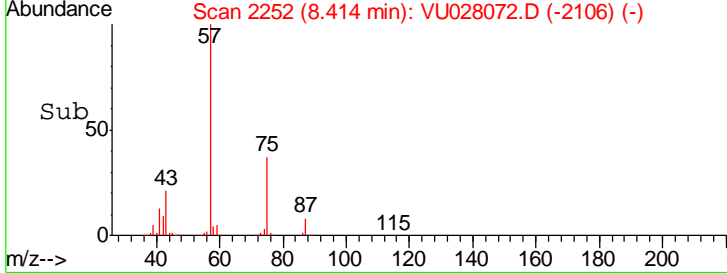
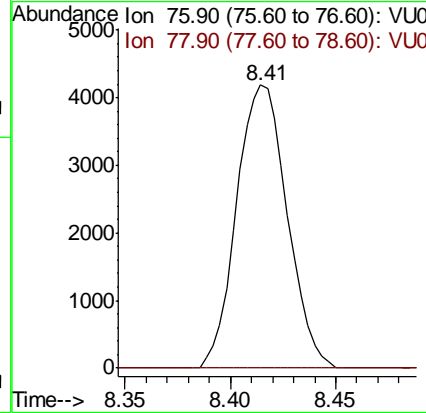
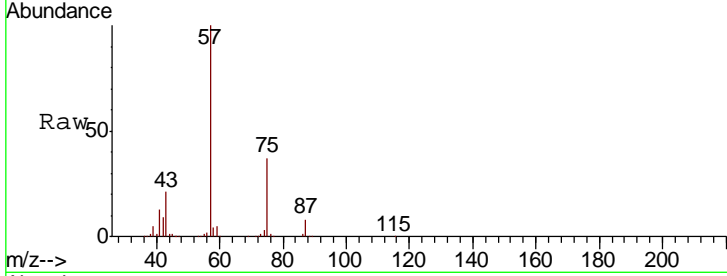




#57
 1,3-Dichloropropane
 Concen: 1.551 ug/l
 RT: 8.41 min Scan# 2252
 Delta R.T. 0.17 min
 Lab File: VU028072.D
 Acq: 12 Nov 2018 18:09

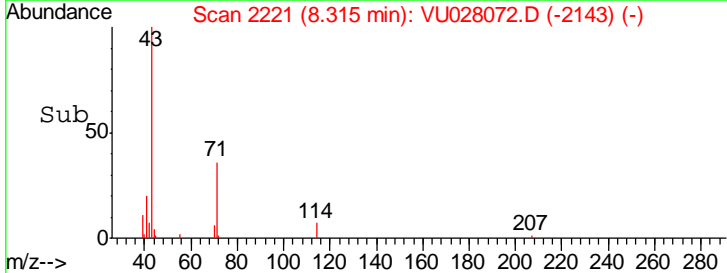
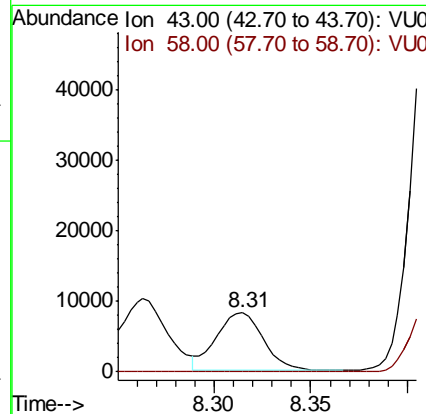
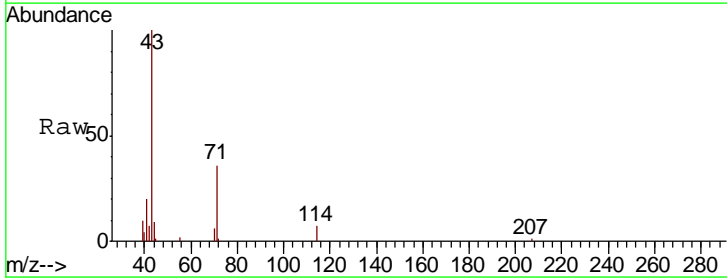
Instrument : MSVOA_U
 ClientSampled : SB-13-D

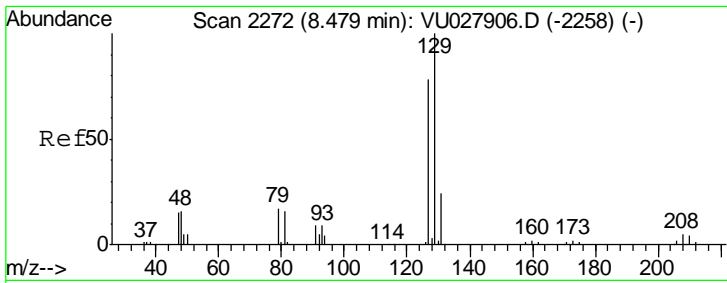
Tgt Ion: 76 Resp: 6952
 Ion Ratio Lower Upper
 76 100
 78 0.0 25.3 37.9#



#59
 2-Hexanone
 Concen: 3.458 ug/l
 RT: 8.31 min Scan# 2221
 Delta R.T. -0.05 min
 Lab File: VU028072.D
 Acq: 12 Nov 2018 18:09

Tgt Ion: 43 Resp: 13794
 Ion Ratio Lower Upper
 43 100
 58 0.0 25.8 77.3#

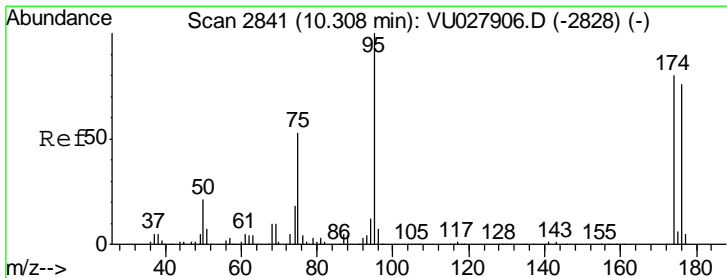
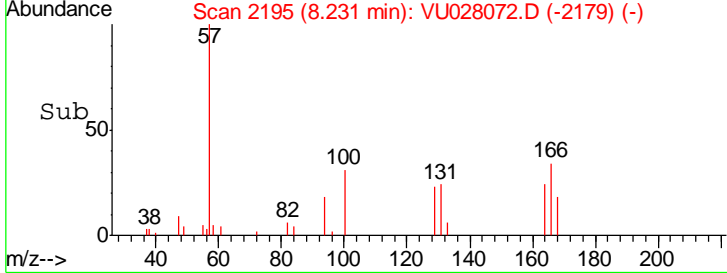
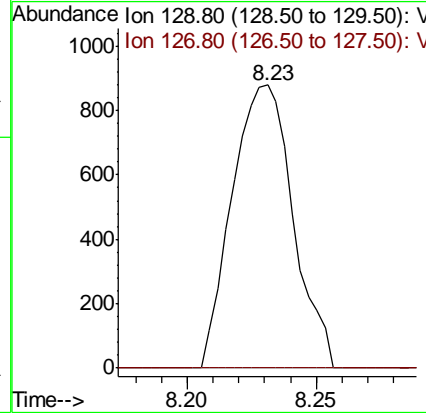
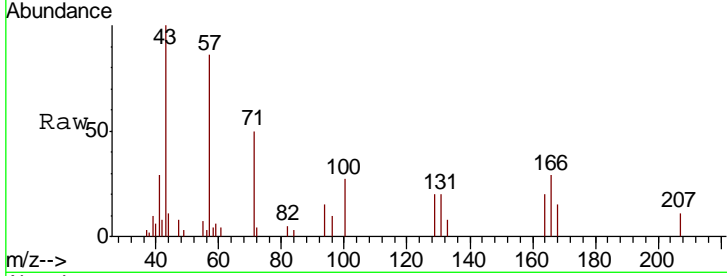




#60
 Dibromochloromethane
 Concen: 0.620 ug/l
 RT: 8.23 min Scan# 2195
 Delta R.T. -0.25 min
 Lab File: VU028072.D
 Acq: 12 Nov 2018 18:09

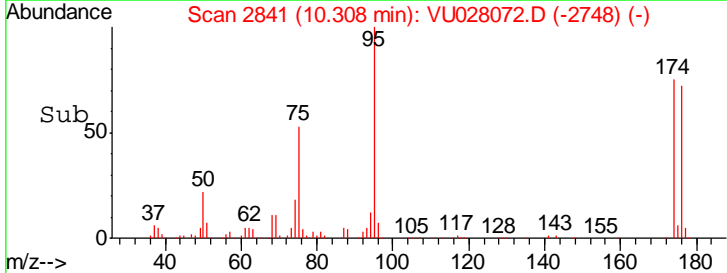
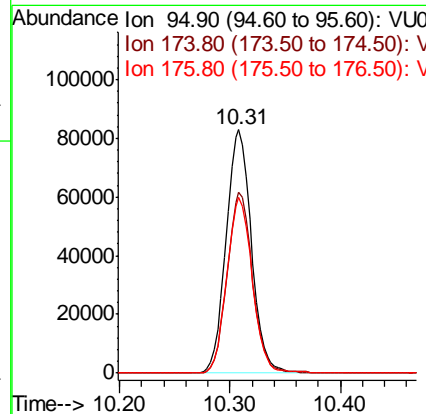
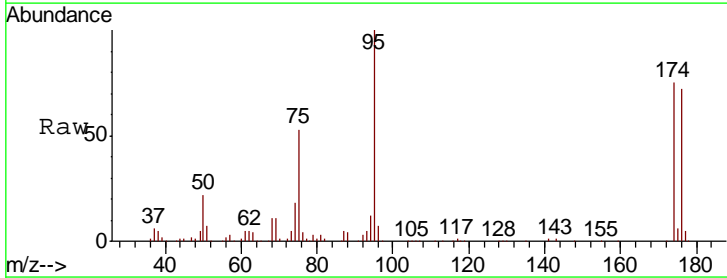
Instrument :
 MSVOA_U
 ClientSampled :
 SB-13-D

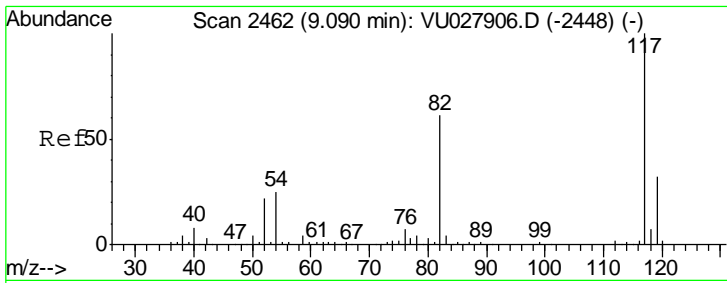
Tgt Ion: 129 Resp: 1444
 Ion Ratio Lower Upper
 129 100
 127 0.0 39.2 117.6#



#62
 4-Bromofluorobenzene
 Concen: 45.824 ug/l
 RT: 10.31 min Scan# 2841
 Delta R.T. -0.00 min
 Lab File: VU028072.D
 Acq: 12 Nov 2018 18:09

Tgt Ion: 95 Resp: 132227
 Ion Ratio Lower Upper
 95 100
 174 74.3 0.0 156.4
 176 72.4 0.0 150.8

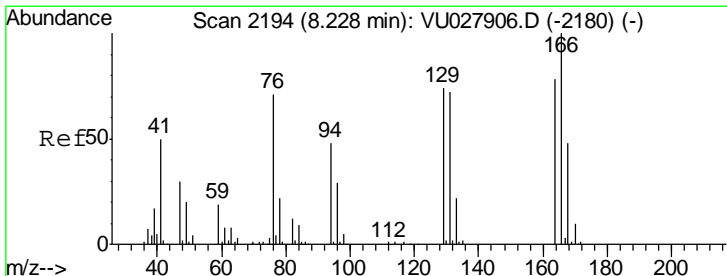
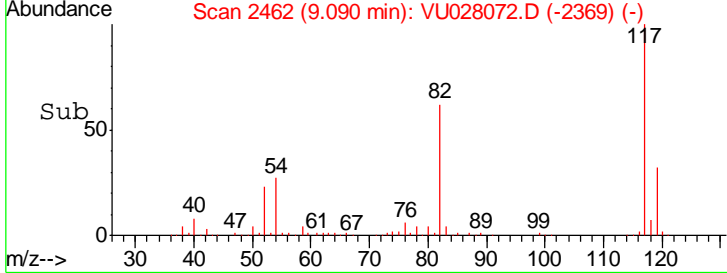
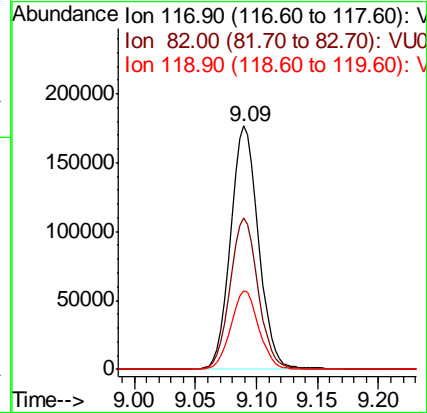
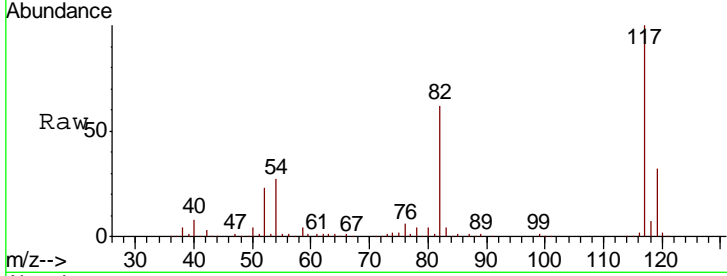




#63
 Chlorobenzene-d5
 Concen: 50.000 ug/l
 RT: 9.09 min Scan# 2462
 Delta R.T. -0.00 min
 Lab File: VU028072.D
 Acq: 12 Nov 2018 18:09

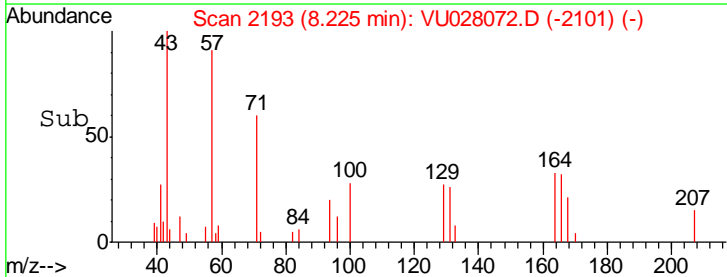
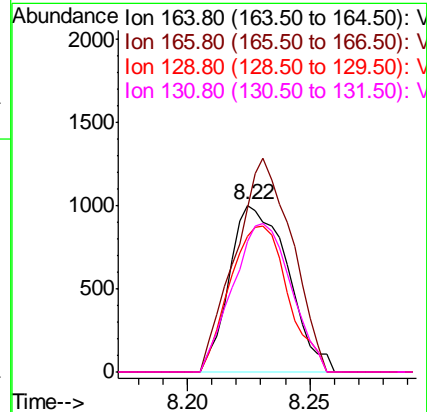
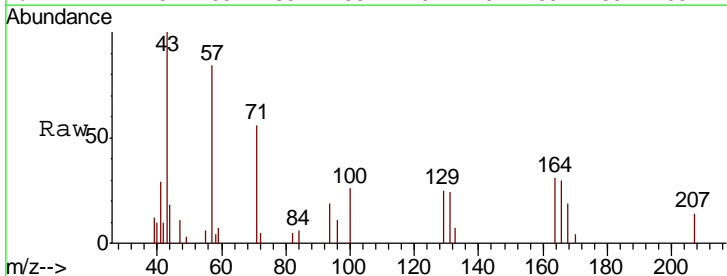
Instrument :
 MSVOA_U
 ClientSampled :
 SB-13-D

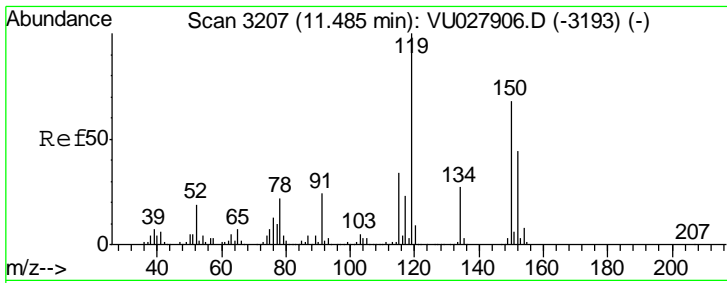
| Tgt Ion | Resp | Lower | Upper |
|---------|--------|-------|-------|
| 117 | 283954 | | |
| 82 | 62.0 | 48.6 | 73.0 |
| 119 | 32.3 | 25.8 | 38.8 |



#64
 Tetrachloroethene
 Concen: 0.906 ug/l
 RT: 8.22 min Scan# 2193
 Delta R.T. -0.00 min
 Lab File: VU028072.D
 Acq: 12 Nov 2018 18:09

| Tgt Ion | Resp | Lower | Upper |
|---------|------|-------|--------|
| 164 | 1669 | | |
| 166 | 97.8 | 102.1 | 153.1# |
| 129 | 81.3 | 75.9 | 113.9 |
| 131 | 78.6 | 73.0 | 109.6 |

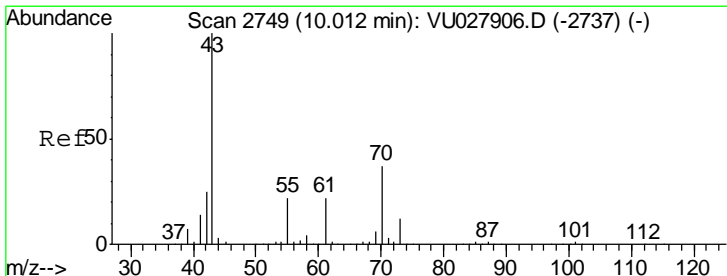
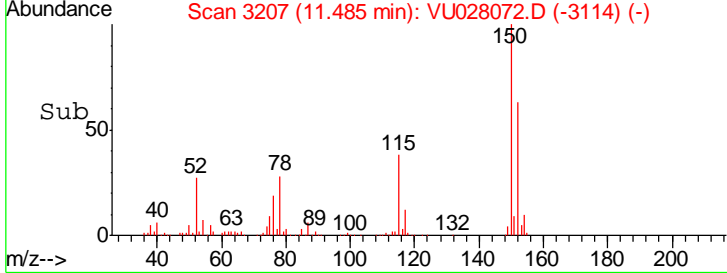
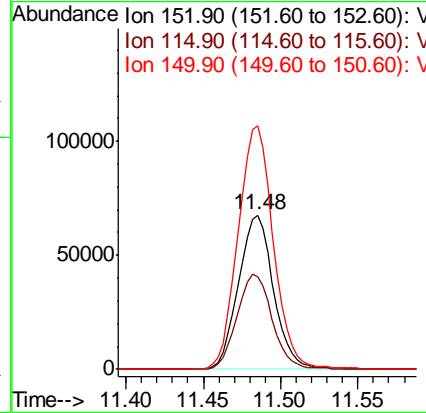
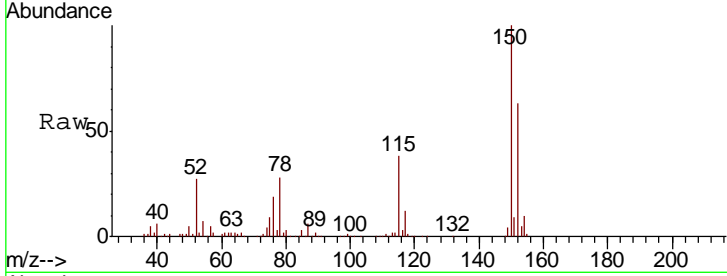




#72
 1,4-Dichlorobenzene-d4
 Concen: 50.000 ug/l
 RT: 11.48 min Scan# 3207
 Delta R.T. -0.00 min
 Lab File: VU028072.D
 Acq: 12 Nov 2018 18:09

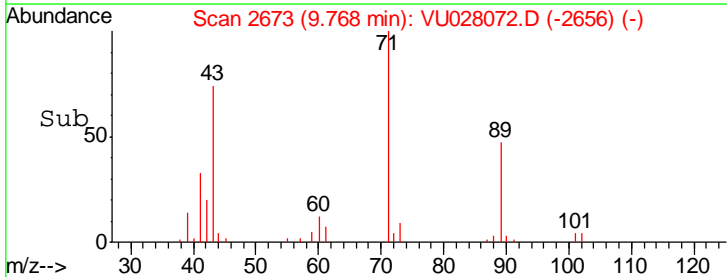
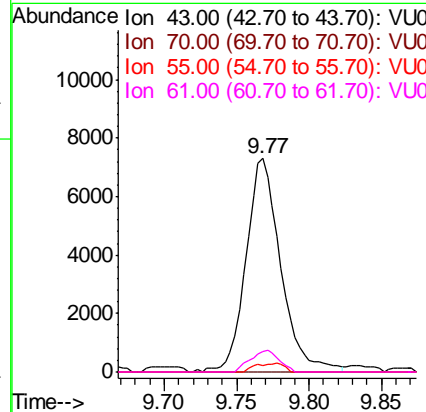
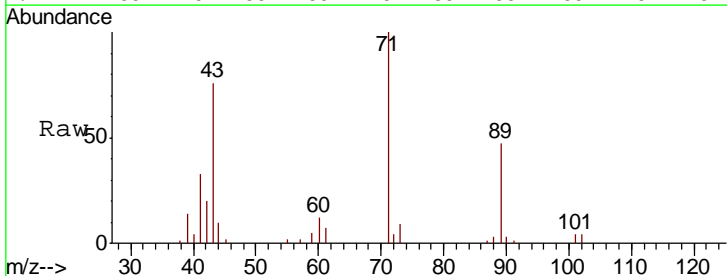
Instrument :
 MSVOA_U
 ClientSampled :
 SB-13-D

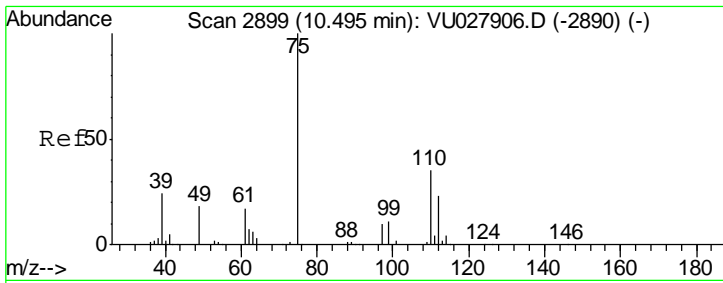
| Tgt Ion | Resp | Lower | Upper |
|---------|--------|-------|-------|
| 152 | 106497 | | |
| 115 | 61.6 | 43.0 | 129.0 |
| 150 | 159.0 | 0.0 | 349.4 |



#74
 N-amyl acetate
 Concen: 2.446 ug/l
 RT: 9.77 min Scan# 2673
 Delta R.T. -0.24 min
 Lab File: VU028072.D
 Acq: 12 Nov 2018 18:09

| Tgt Ion | Resp | Lower | Upper |
|---------|-------|-------|-------|
| 43 | 12201 | | |
| 70 | 0.0 | 29.2 | 43.8# |
| 55 | 3.4 | 17.8 | 26.6# |
| 61 | 8.3 | 17.8 | 26.8# |

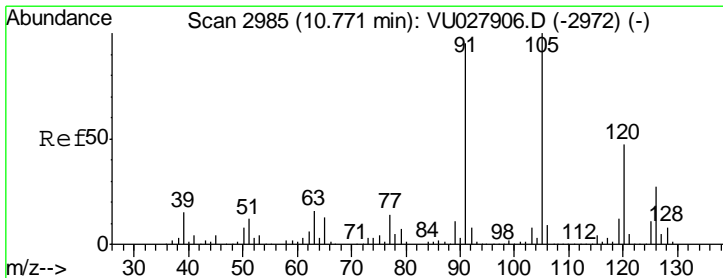
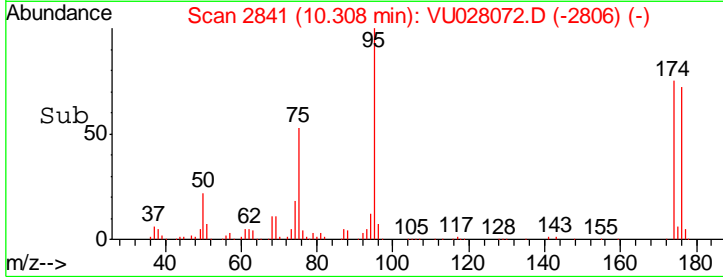
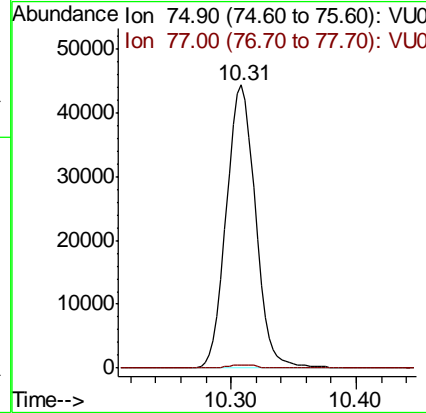
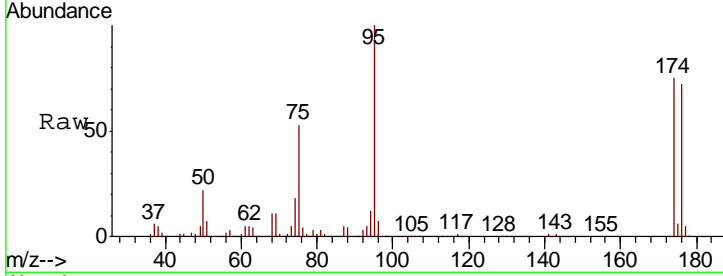




#76
 1,2,3-Trichloropropane
 Concen: 24.571 ug/l
 RT: 10.31 min Scan# 2841
 Delta R.T. -0.19 min
 Lab File: VU028072.D
 Acq: 12 Nov 2018 18:09

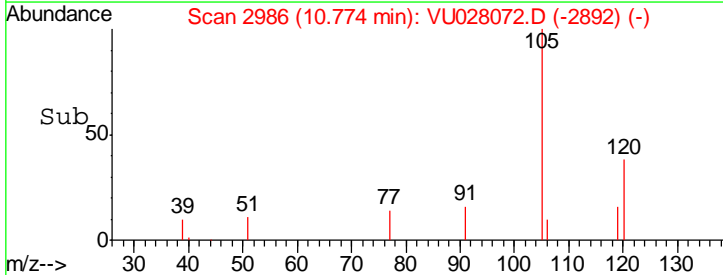
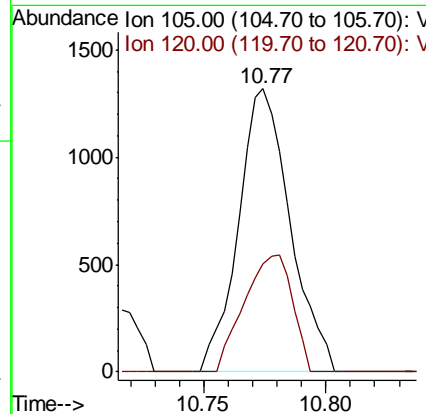
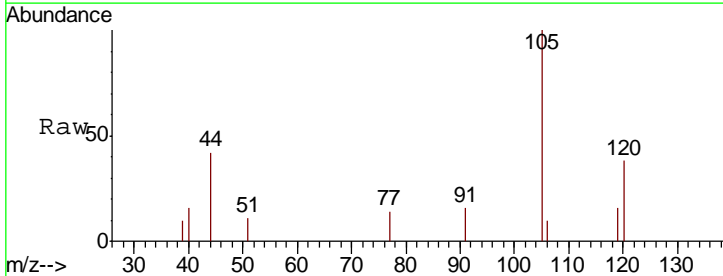
Instrument : MSVOA_U
 ClientSampled : SB-13-D

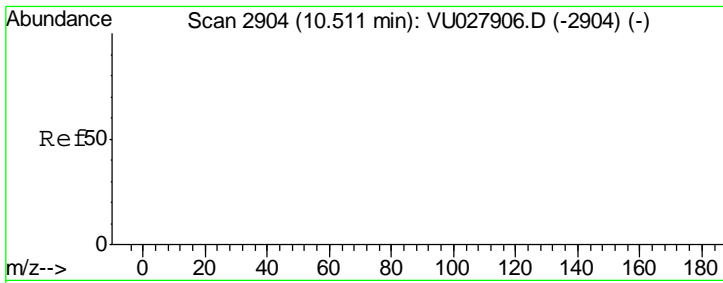
Tgt Ion: 75 Resp: 71576
 Ion Ratio Lower Upper
 75 100
 77 1.2 21.6 64.6#



#80
 1,3,5-Trimethylbenzene
 Concen: 0.283 ug/l
 RT: 10.77 min Scan# 2986
 Delta R.T. 0.00 min
 Lab File: VU028072.D
 Acq: 12 Nov 2018 18:09

Tgt Ion: 105 Resp: 1936
 Ion Ratio Lower Upper
 105 100
 120 38.5 23.3 69.9

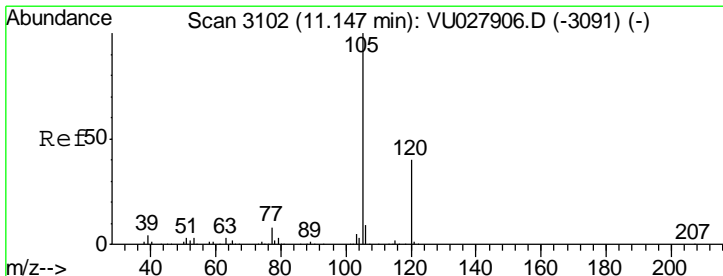
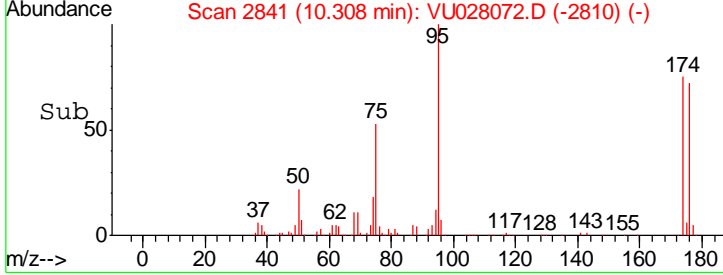
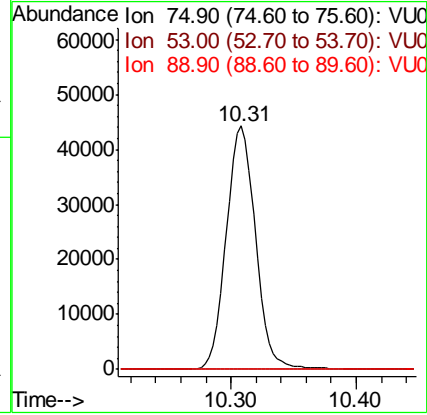
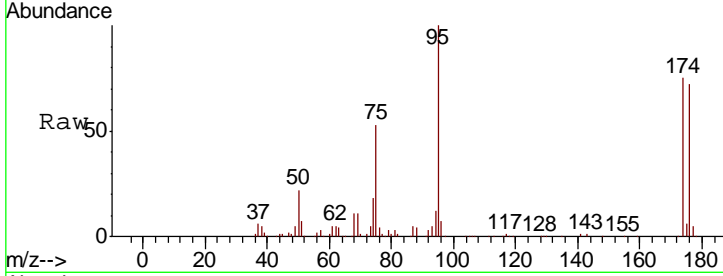




#81
 trans-1,4-Dichloro-2-butene
 Concen: 61.290 ug/l
 RT: 10.31 min Scan# 2841
 Delta R.T. -0.20 min
 Lab File: VU028072.D
 Acq: 12 Nov 2018 18:09

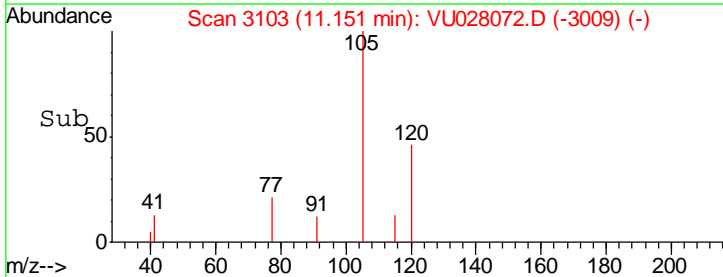
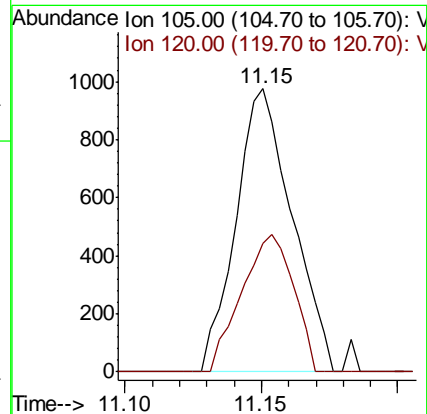
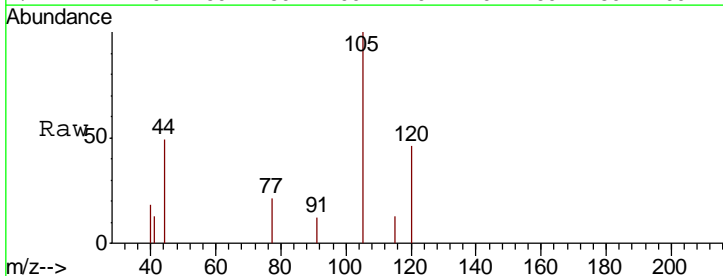
Instrument :
 MSVOA_U
 ClientSampled :
 SB-13-D

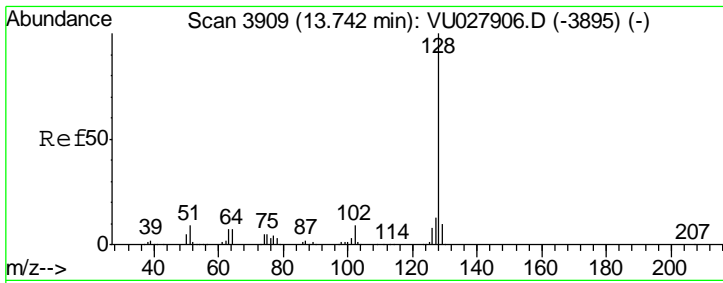
| Tgt Ion | Resp | Lower | Upper |
|---------|------|-------|-------|
| 75 | 100 | | |
| 53 | 0.0 | 0.0 | 0.0 |
| 89 | 0.0 | 0.0 | 0.0 |



#84
 1,2,4-Trimethylbenzene
 Concen: 0.203 ug/l
 RT: 11.15 min Scan# 3103
 Delta R.T. 0.00 min
 Lab File: VU028072.D
 Acq: 12 Nov 2018 18:09

| Tgt Ion | Resp | Lower | Upper |
|---------|------|-------|-------|
| 105 | 100 | | |
| 120 | 44.8 | 22.1 | 66.1 |





#95
 Naphthalene
 Concen: 3.198 ug/l
 RT: 13.75 min Scan# 3910
 Delta R.T. 0.00 min
 Lab File: VU028072.D
 Acq: 12 Nov 2018 18:09

Instrument :
 MSVOA_U
 ClientSampled :
 SB-13-D

Tot Ion:128 Resp: 29422

| Ion | Ratio | Lower | Upper |
|-----|-------|-------|-------|
| 128 | 100 | | |
| 127 | 13.1 | 10.4 | 15.6 |
| 129 | 11.1 | 8.3 | 12.5 |

