

Data Path : Z:\VOASRV\HPCHEM1\MSVOA U\DATA\VU111318\  
 Data File : VU028096.D  
 Acq On : 13 Nov 2018 16:54  
 Operator : MD/SY  
 Sample : J5921-02  
 Misc : 5.0mL/MSVOA U/WATER  
 ALS Vial : 17 Sample Multiplier: 1

Instrument :  
 MSVOA\_U  
 ClientSampleId :  
 SP-TANK1-N29675

Quant Time: Nov 14 07:33:24 2018  
 Quant Method : Z:\VOASRV\HPCHEM1\MSVOA\_U\METHOD\82U110218W.M  
 Quant Title : SW846 8260  
 QLast Update : Fri Nov 02 02:28:20 2018  
 Response via : Initial Calibration

Internal Standards	R.T.	QIon	Response	Conc	Units	Dev(Min)
1) Pentafluorobenzene	4.98	168	258922	50.00	ug/l	0.00
34) 1,4-Difluorobenzene	5.89	114	475529	50.00	ug/l	0.00
63) Chlorobenzene-d5	9.09	117	424819	50.00	ug/l	0.00
72) 1,4-Dichlorobenzene-d4	11.48	152	183694	50.00	ug/l	0.00

## System Monitoring Compounds

33) 1,2-Dichloroethane-d4	5.31	65	198159	51.48	ug/l	0.00
Spiked Amount	50.000		Recovery	=	102.96%	
35) Dibromofluoromethane	4.88	113	154081	51.39	ug/l	0.00
Spiked Amount	50.000		Recovery	=	102.78%	
50) Toluene-d8	7.57	98	613234	52.95	ug/l	0.00
Spiked Amount	50.000		Recovery	=	105.90%	
62) 4-Bromofluorobenzene	10.31	95	206732	48.39	ug/l	0.00
Spiked Amount	50.000		Recovery	=	96.78%	

## Target Compounds

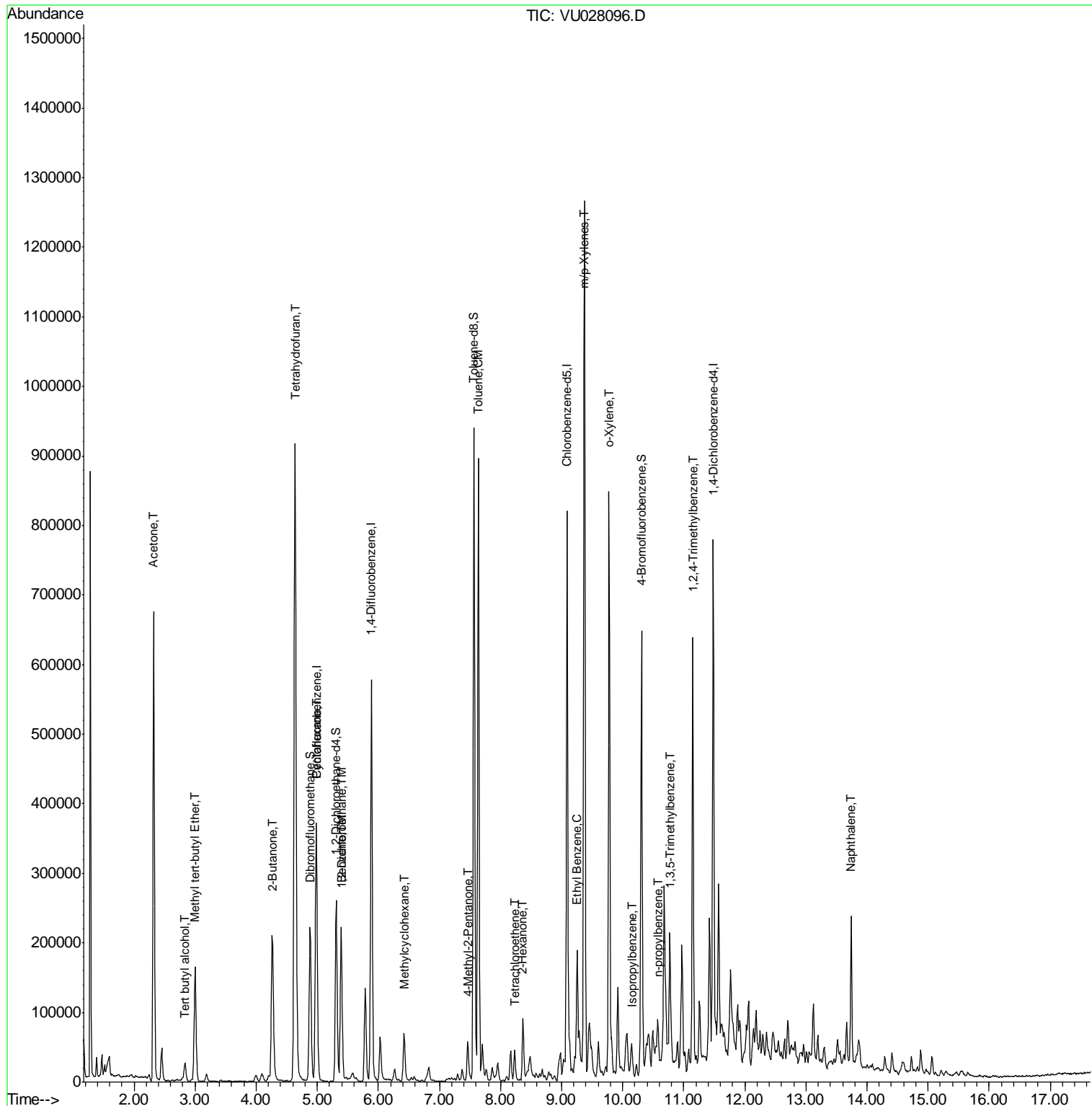
						Qvalue
11) Tert butyl alcohol	2.84	59	30165	29.600	ug/l	96
16) Acetone	2.32	43	690765	289.218	ug/l	97
19) Methyl tert-butyl Ether	3.00	73	174623	15.957	ug/l	99
25) 2-Butanone	4.26	43	339821	89.434	ug/l	94
29) Tetrahydrofuran	4.64	42	725218	285.832	ug/l	94
31) Cyclohexane	4.99	56	21436	1.566	ug/l #	58
39) Methylcyclohexane	6.41	83	5750	0.957	ug/l	99
40) Benzene	5.39	78	210292	13.811	ug/l	98
42) 1,2-Dichloroethane	5.40	62	13618	2.516	ug/l	99
51) 4-Methyl-2-Pentanone	7.46	43	41415	5.424	ug/l	98
52) Toluene	7.64	92	365878	40.872	ug/l	100
59) 2-Hexanone	8.37	43	50320	8.521	ug/l	100
64) Tetrachloroethene	8.23	164	1644	0.597	ug/l	96
67) Ethyl Benzene	9.25	91	83996	5.084	ug/l	99
68) m/p-Xylenes	9.37	106	342251	57.096	ug/l	100
69) o-Xylene	9.78	106	215660	35.629	ug/l	99
73) Isopropylbenzene	10.17	105	5581	0.392	ug/l	95
78) n-propylbenzene	10.59	91	14138	0.830	ug/l	89
80) 1,3,5-Trimethylbenzene	10.77	105	75516	6.406	ug/l	98
84) 1,2,4-Trimethylbenzene	11.15	105	307098	25.871	ug/l	100
95) Naphthalene	13.74	128	161990	10.608	ug/l	99

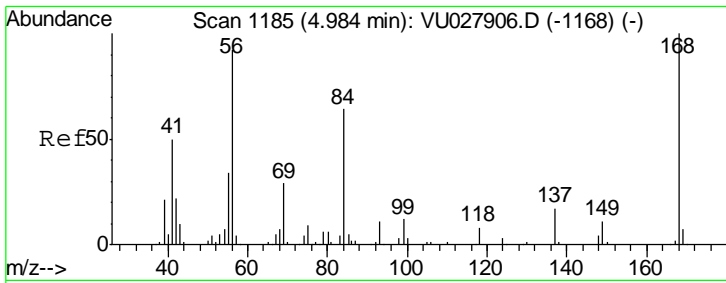
(#) = qualifier out of range (m) = manual integration (+) = signals summed

Data Path : Z:\VOASRV\HPCHEM1\MSVOA U\DATA\VU111318\  
 Data File : VU028096.D  
 Acq On : 13 Nov 2018 16:54  
 Operator : MD/SY  
 Sample : J5921-02  
 Misc : 5.0mL/MSVOA U/WATER  
 ALS Vial : 17 Sample Multiplier: 1

Instrument :  
 MSVOA\_U  
 Client Sampled :  
 SP-TANK1-N29675

Quant Time: Nov 14 07:33:24 2018  
 Quant Method : Z:\VOASRV\HPCHEM1\MSVOA\_U\METHOD\82U110218W.M  
 Quant Title : SW846 8260  
 QLast Update : Fri Nov 02 02:28:20 2018  
 Response via : Initial Calibration

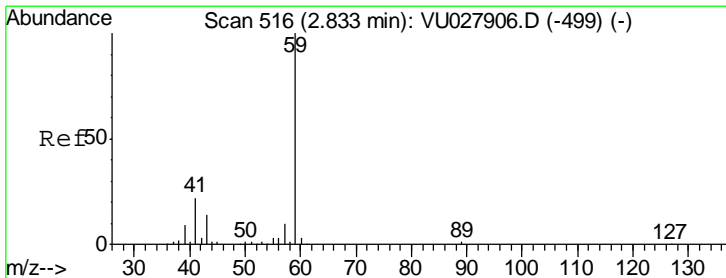
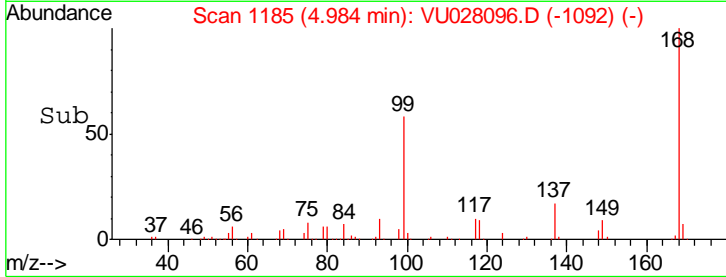
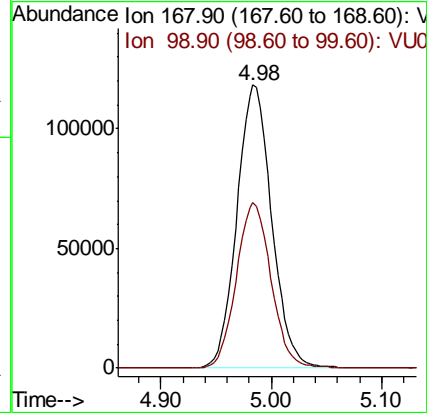
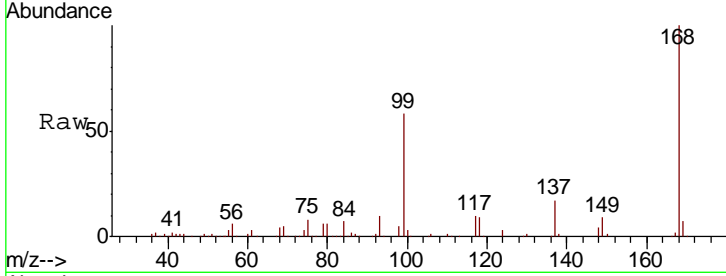




#1  
 Pentafluorobenzene  
 Concen: 50.000 ug/l  
 RT: 4.98 min Scan# 1185  
 Delta R.T. 0.00 min  
 Lab File: VU028096.D  
 Acq: 13 Nov 2018 16:54

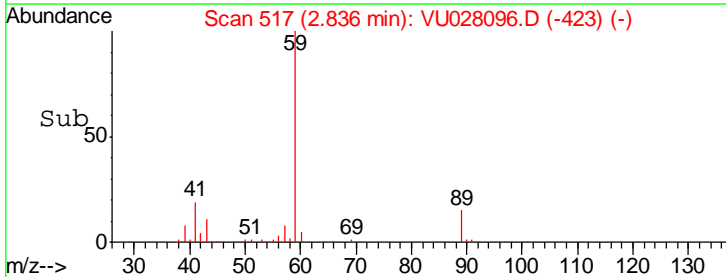
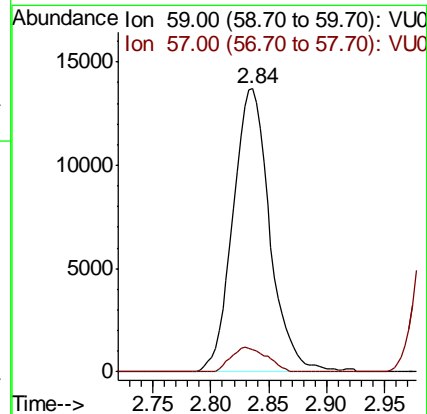
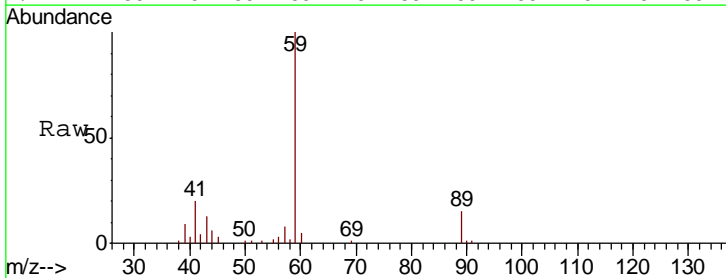
Instrument :  
 MSVOA\_U  
 ClientSampled :  
 SP-TANK1-N29675

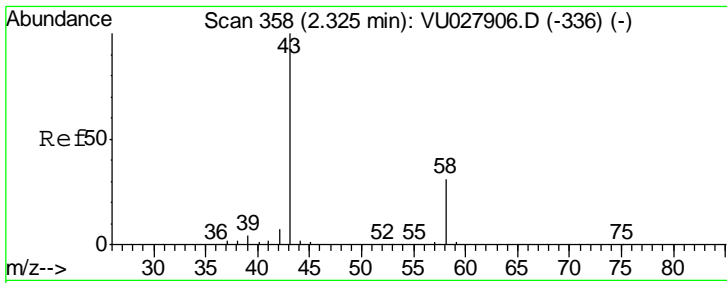
Tgt Ion: 168 Resp: 258922  
 Ion Ratio Lower Upper  
 168 100  
 99 58.4 47.9 71.9



#11  
 Tert butyl alcohol  
 Concen: 29.600 ug/l  
 RT: 2.84 min Scan# 517  
 Delta R.T. 0.00 min  
 Lab File: VU028096.D  
 Acq: 13 Nov 2018 16:54

Tgt Ion: 59 Resp: 30165  
 Ion Ratio Lower Upper  
 59 100  
 57 8.5 7.8 11.8

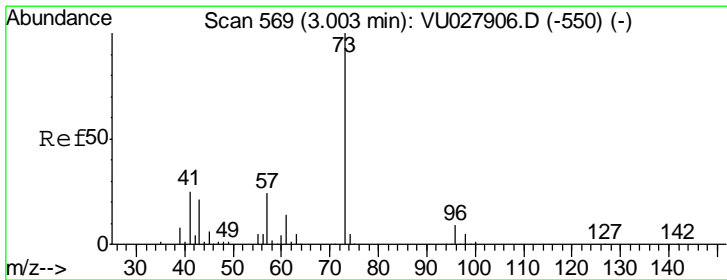
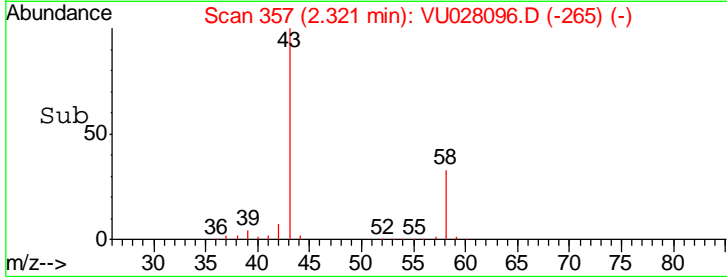
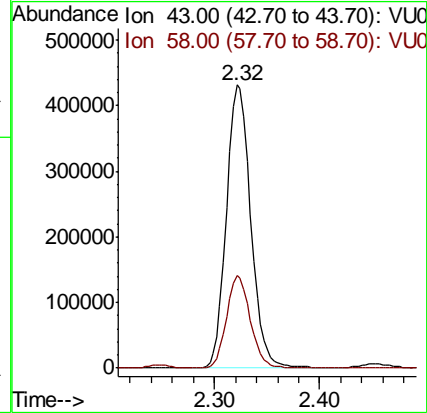
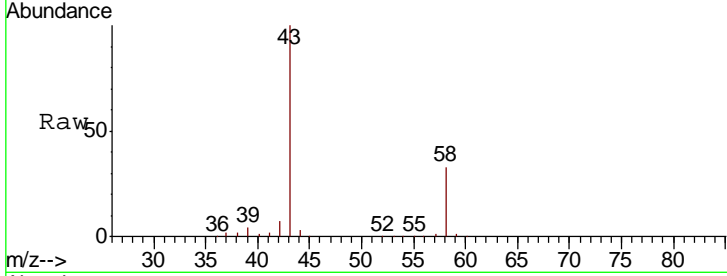




#16  
 Acetone  
 Concen: 289.218 ug/l  
 RT: 2.32 min Scan# 357  
 Delta R.T. -0.00 min  
 Lab File: VU028096.D  
 Acq: 13 Nov 2018 16:54

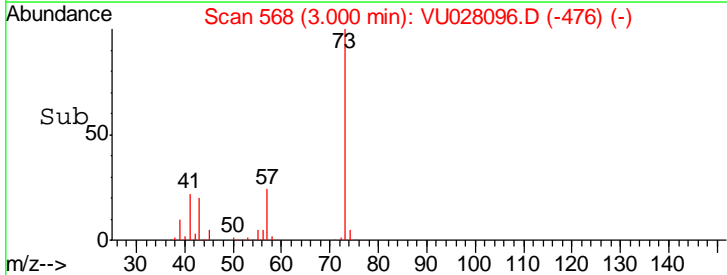
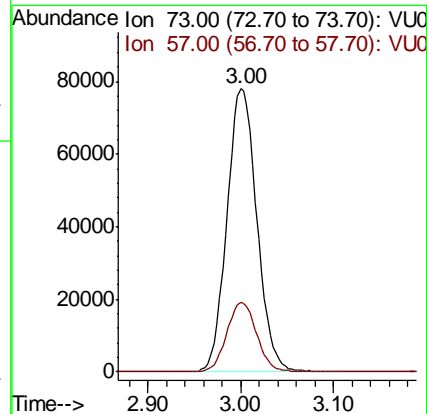
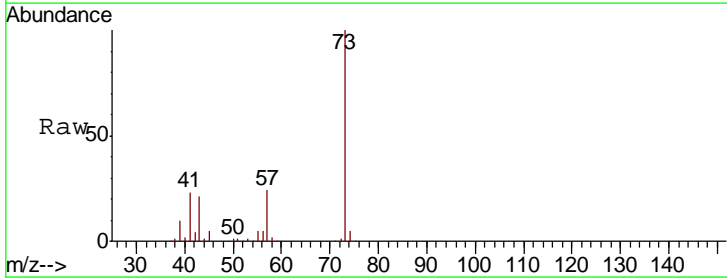
Instrument :  
 MSVOA\_U  
 ClientSampleId :  
 SP-TANK1-N29675

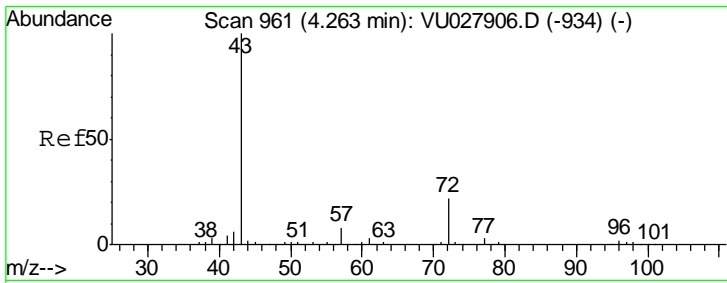
Tgt Ion: 43 Resp: 690765  
 Ion Ratio Lower Upper  
 43 100  
 58 32.5 24.6 37.0



#19  
 Methyl tert-butyl Ether  
 Concen: 15.957 ug/l  
 RT: 3.00 min Scan# 568  
 Delta R.T. -0.00 min  
 Lab File: VU028096.D  
 Acq: 13 Nov 2018 16:54

Tgt Ion: 73 Resp: 174623  
 Ion Ratio Lower Upper  
 73 100  
 57 24.5 19.3 28.9

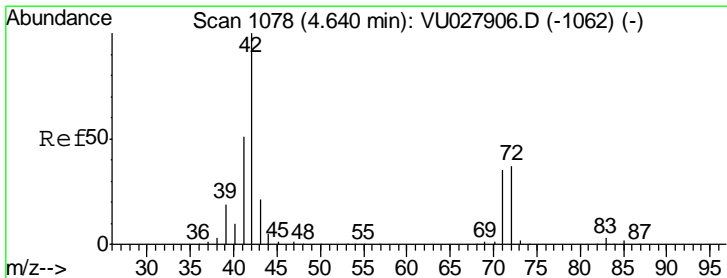
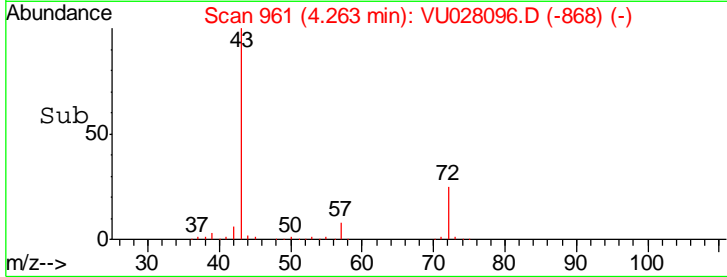
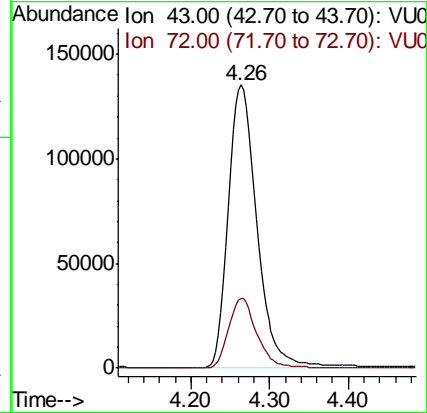
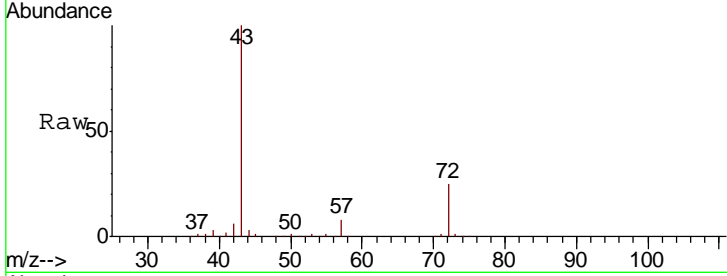




#25  
 2-Butanone  
 Concen: 89.434 ug/l  
 RT: 4.26 min Scan# 961  
 Delta R.T. 0.00 min  
 Lab File: VU028096.D  
 Acq: 13 Nov 2018 16:54

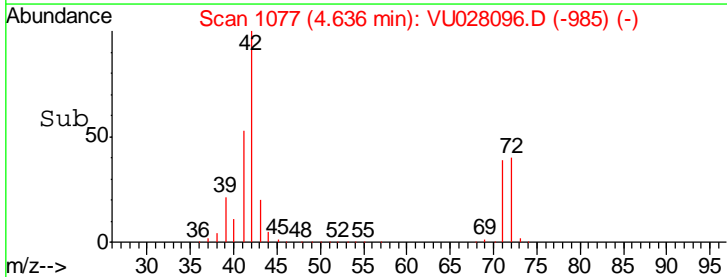
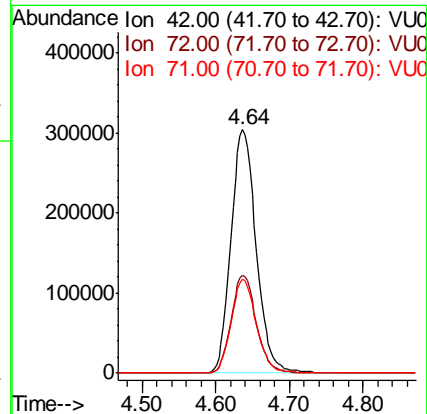
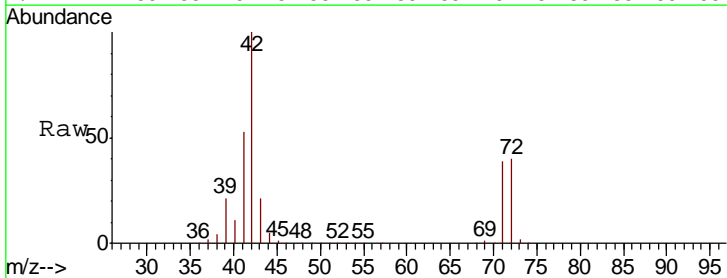
Instrument :  
 MSVOA\_U  
 ClientSampled :  
 SP-TANK1-N29675

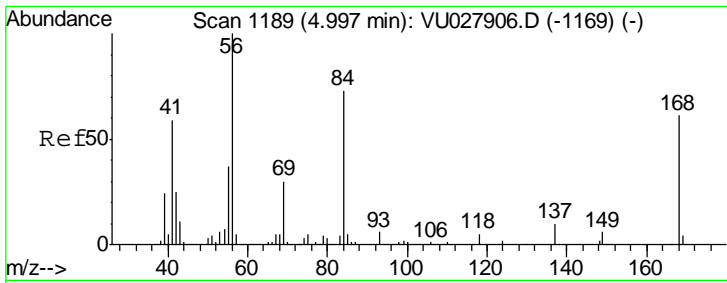
Tgt Ion	Resp	Lower	Upper
43	339821		
72	24.9	17.7	26.5



#29  
 Tetrahydrofuran  
 Concen: 285.832 ug/l  
 RT: 4.64 min Scan# 1077  
 Delta R.T. -0.00 min  
 Lab File: VU028096.D  
 Acq: 13 Nov 2018 16:54

Tgt Ion	Resp	Lower	Upper
42	725218		
72	40.1	29.4	44.0
71	38.1	27.9	41.9

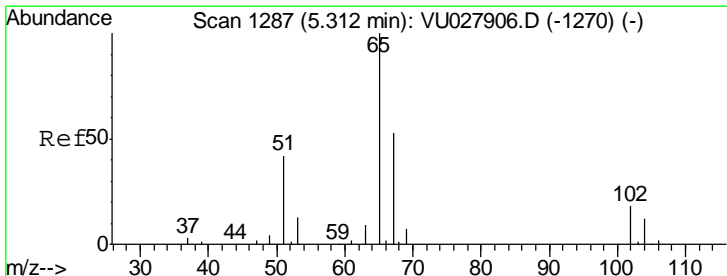
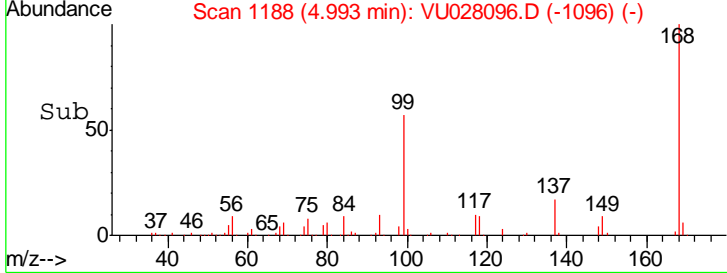
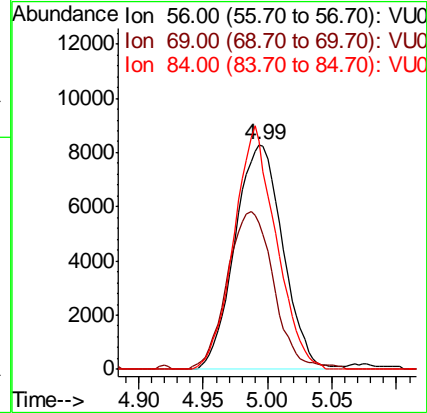
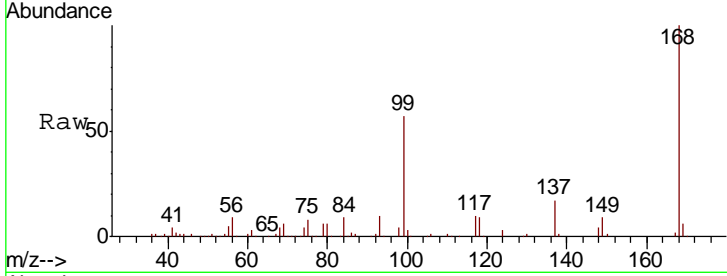




#31  
 Cyclohexane  
 Concen: 1.566 ug/l  
 RT: 4.99 min Scan# 1188  
 Delta R.T. -0.00 min  
 Lab File: VU028096.D  
 Acq: 13 Nov 2018 16:54

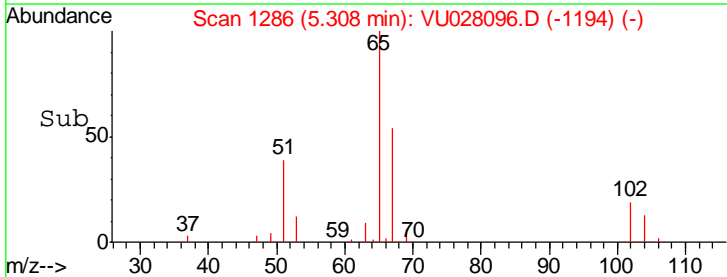
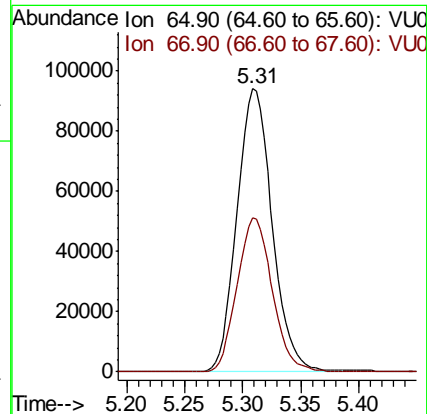
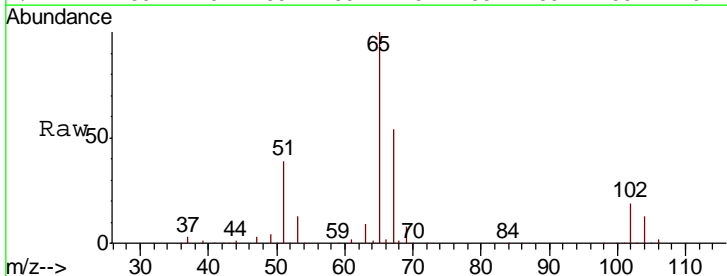
**Instrument :**  
 MSVOA\_U  
**ClientSampled :**  
 SP-TANK1-N29675

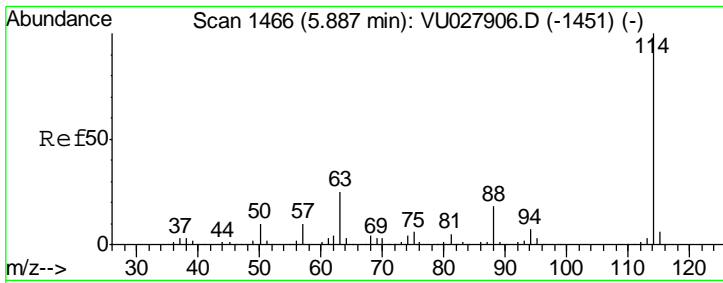
Tgt Ion	Resp	Lower	Upper
56	21436		
69	63.5	23.7	35.5#
84	101.2	58.2	87.4#



#33  
 1,2-Dichloroethane-d4  
 Concen: 51.476 ug/l  
 RT: 5.31 min Scan# 1286  
 Delta R.T. -0.00 min  
 Lab File: VU028096.D  
 Acq: 13 Nov 2018 16:54

Tgt Ion	Resp	Lower	Upper
65	198159		
67	54.5	0.0	109.0

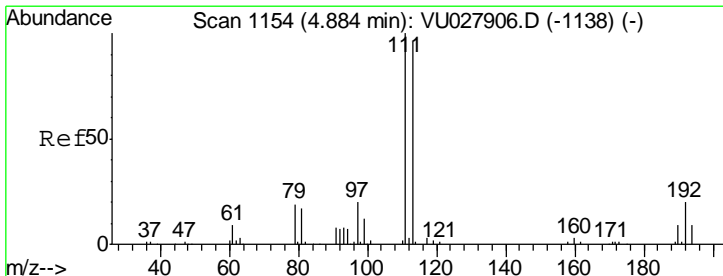
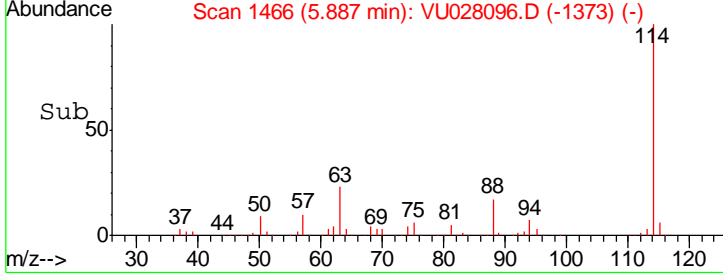
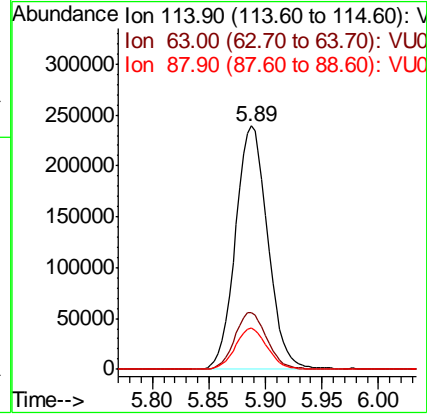
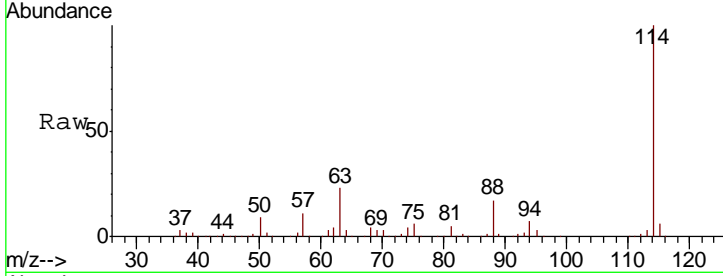




#34  
 1,4-Difluorobenzene  
 Concen: 50.000 ug/l  
 RT: 5.89 min Scan# 1466  
 Delta R.T. 0.00 min  
 Lab File: VU028096.D  
 Acq: 13 Nov 2018 16:54

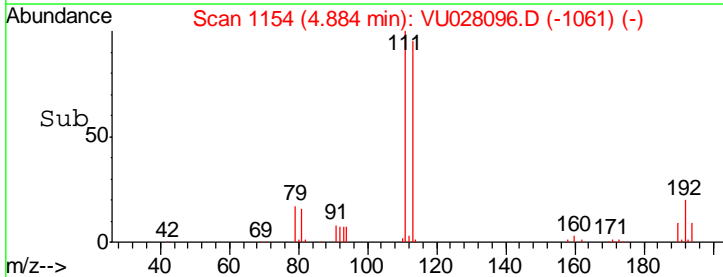
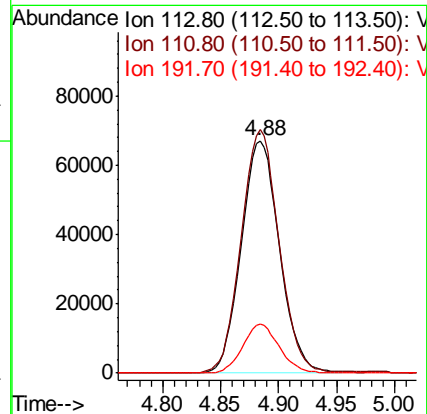
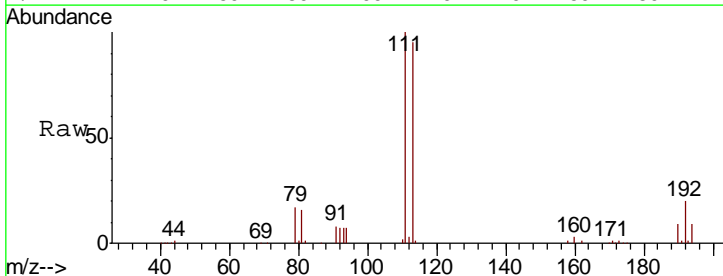
Instrument :  
 MSVOA\_U  
 ClientSampleId :  
 SP-TANK1-N29675

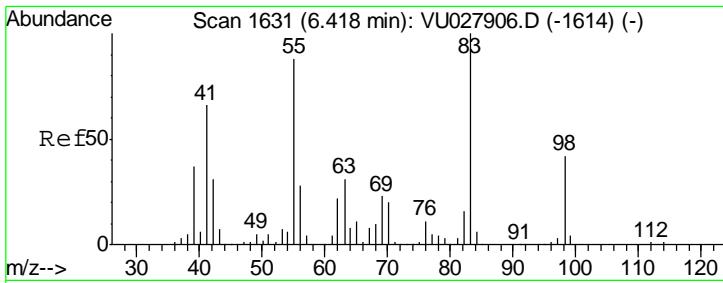
Tgt Ion	Resp	Lower	Upper
114	475529		
63	23.5	0.0	50.8
88	16.9	0.0	35.8



#35  
 Dibromofluoromethane  
 Concen: 51.390 ug/l  
 RT: 4.88 min Scan# 1154  
 Delta R.T. 0.00 min  
 Lab File: VU028096.D  
 Acq: 13 Nov 2018 16:54

Tgt Ion	Resp	Lower	Upper
113	154081		
111	103.6	83.0	124.6
192	20.2	15.6	23.4

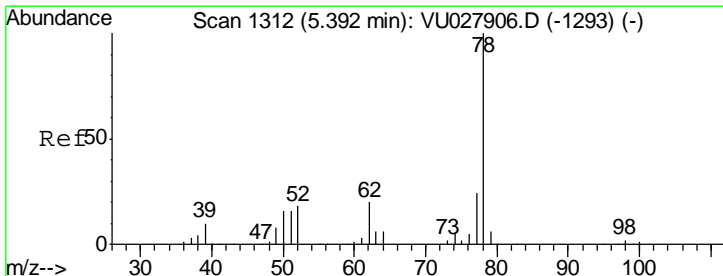
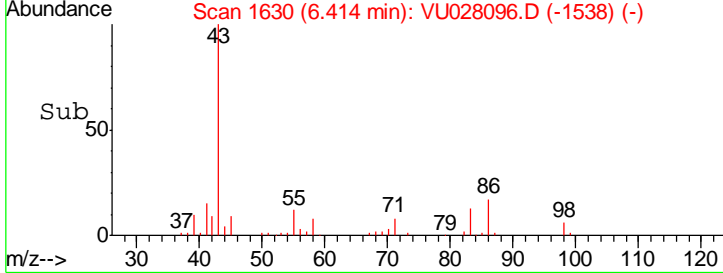
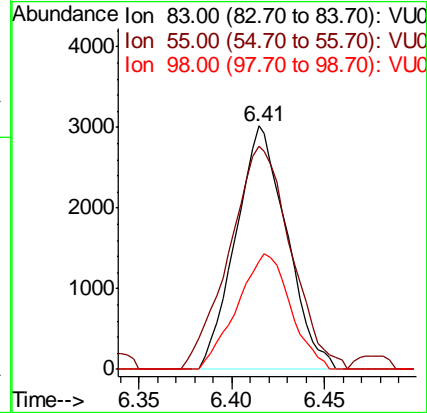
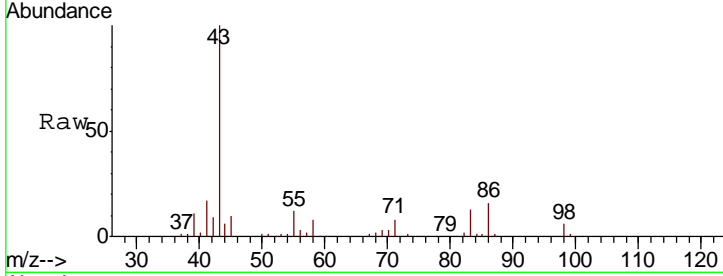




#39  
 Methylcyclohexane  
 Concen: 0.957 ug/l  
 RT: 6.41 min Scan# 1630  
 Delta R.T. -0.00 min  
 Lab File: VU028096.D  
 Acq: 13 Nov 2018 16:54

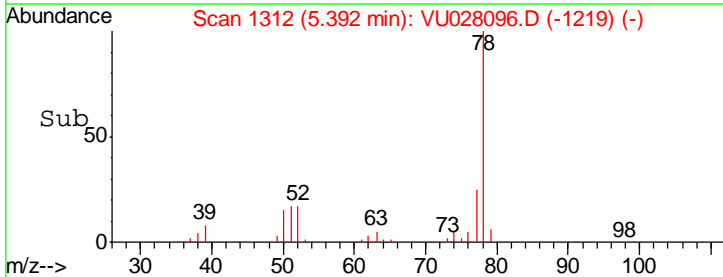
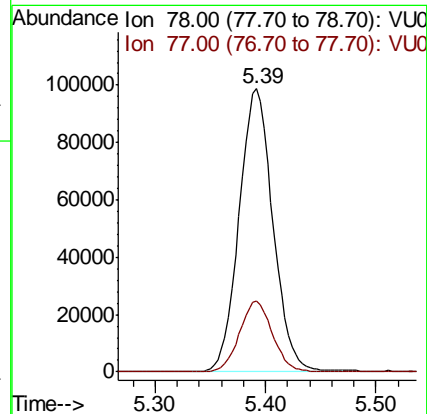
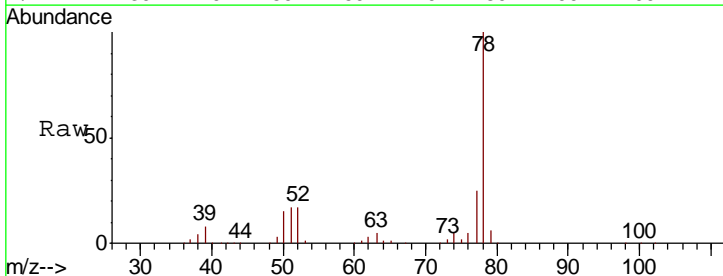
Instrument : MSVOA\_U  
 ClientSampleId : SP-TANK1-N29675

Tgt Ion	Resp	Lower	Upper
83	100		
55	88.3	70.3	105.5
98	44.5	34.0	51.0

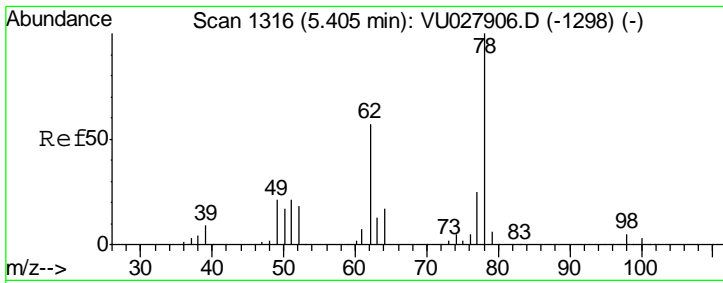


#40  
 Benzene  
 Concen: 13.811 ug/l  
 RT: 5.39 min Scan# 1312  
 Delta R.T. 0.00 min  
 Lab File: VU028096.D  
 Acq: 13 Nov 2018 16:54

Tgt Ion	Resp	Lower	Upper
78	100		
77	25.1	19.3	28.9



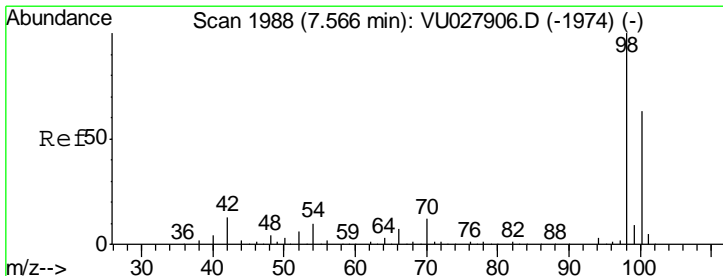
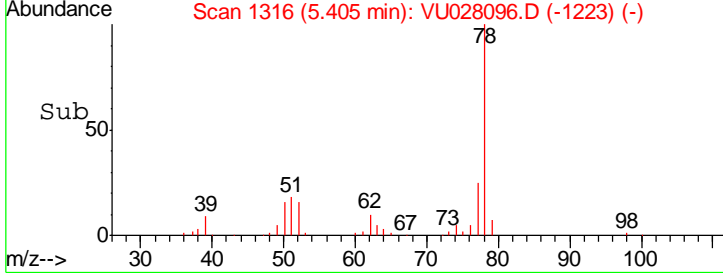
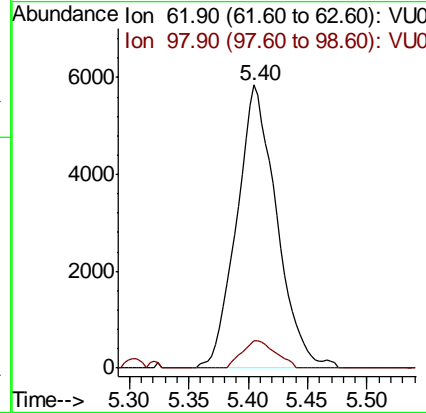
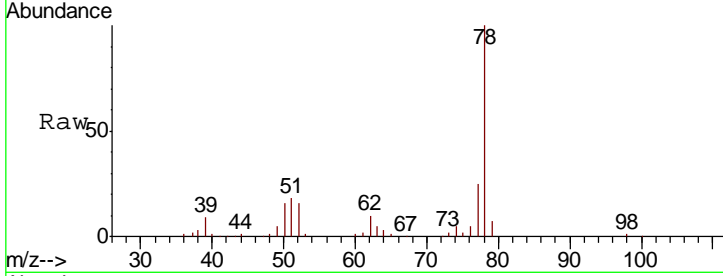




#42  
 1,2-Dichloroethane  
 Concen: 2.516 ug/l  
 RT: 5.40 min Scan# 1316  
 Delta R.T. 0.00 min  
 Lab File: VU028096.D  
 Acq: 13 Nov 2018 16:54

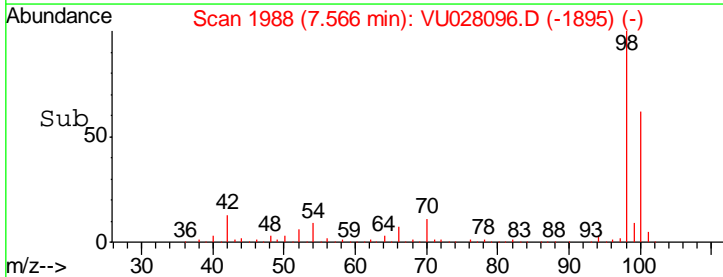
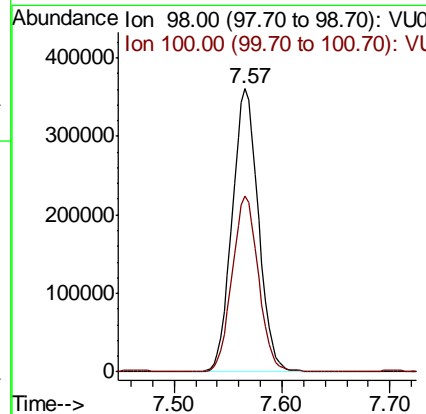
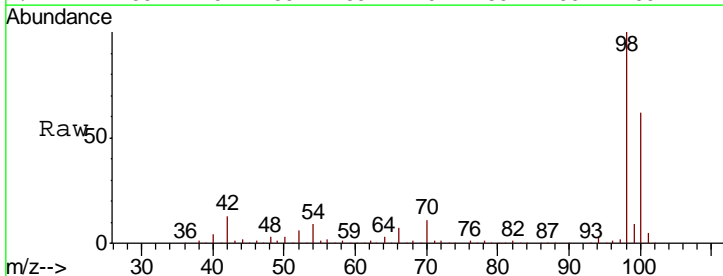
Instrument : MSVOA\_U  
 ClientSampled : SP-TANK1-N29675

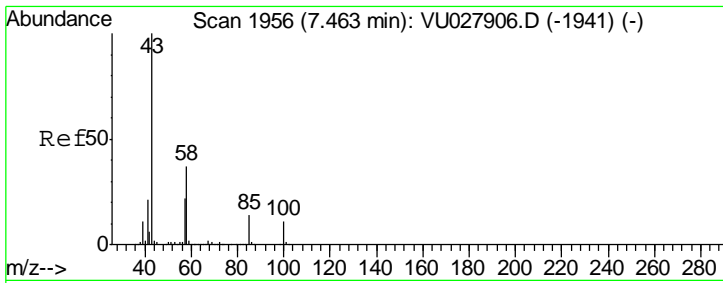
Tgt Ion	Resp	Lower	Upper
62	13618		
98	8.2	0.0	17.2



#50  
 Toluene-d8  
 Concen: 52.947 ug/l  
 RT: 7.57 min Scan# 1988  
 Delta R.T. 0.00 min  
 Lab File: VU028096.D  
 Acq: 13 Nov 2018 16:54

Tgt Ion	Resp	Lower	Upper
98	613234		
100	62.7	50.1	75.1

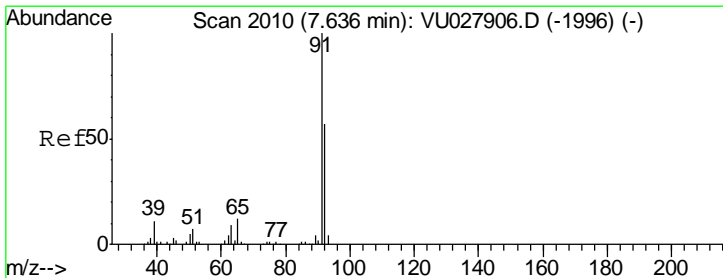
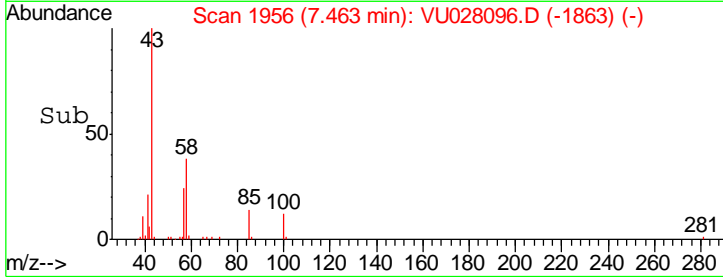
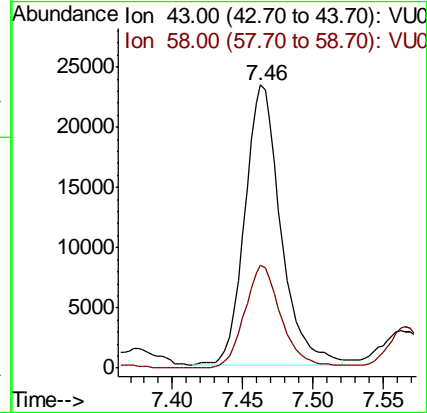
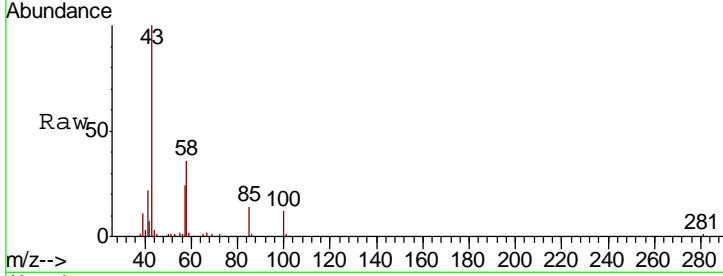




#51  
 4-Methyl-2-Pentanone  
 Concen: 5.424 ug/l  
 RT: 7.46 min Scan# 1956  
 Delta R.T. 0.00 min  
 Lab File: VU028096.D  
 Acq: 13 Nov 2018 16:54

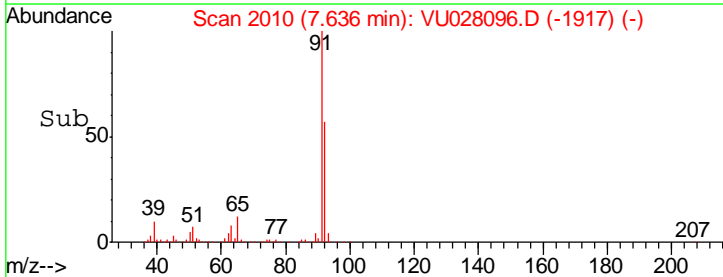
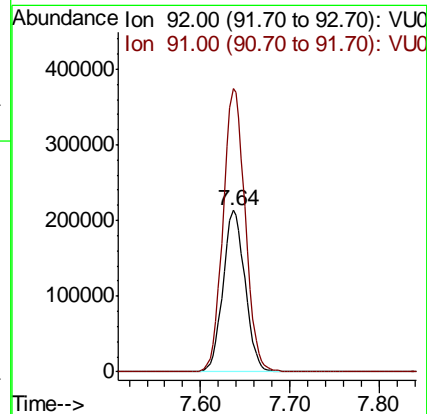
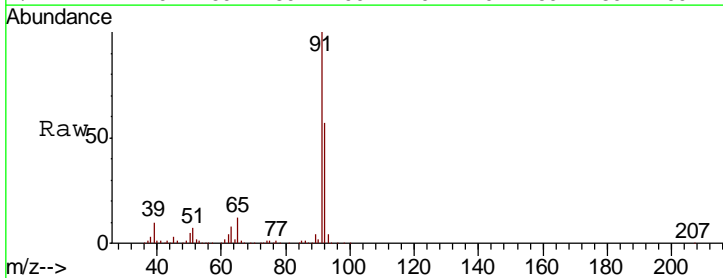
Instrument :  
 MSVOA\_U  
 ClientSampled :  
 SP-TANK1-N29675

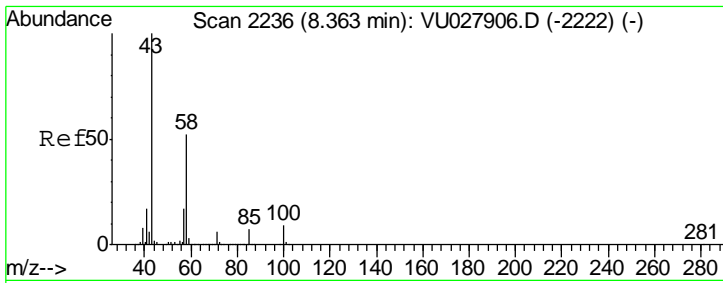
Tgt Ion	Resp	Lower	Upper
43	41415		
58	38.1	29.5	44.3



#52  
 Toluene  
 Concen: 40.872 ug/l  
 RT: 7.64 min Scan# 2010  
 Delta R.T. 0.00 min  
 Lab File: VU028096.D  
 Acq: 13 Nov 2018 16:54

Tgt Ion	Resp	Lower	Upper
92	365878		
91	175.8	141.2	211.8

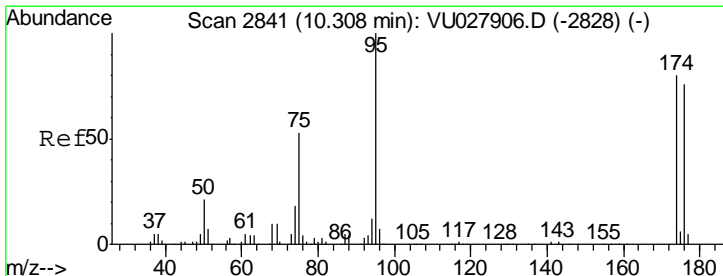
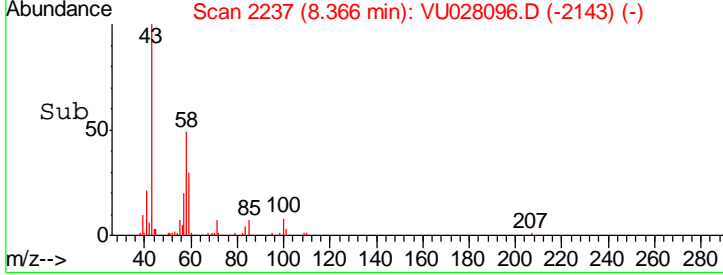
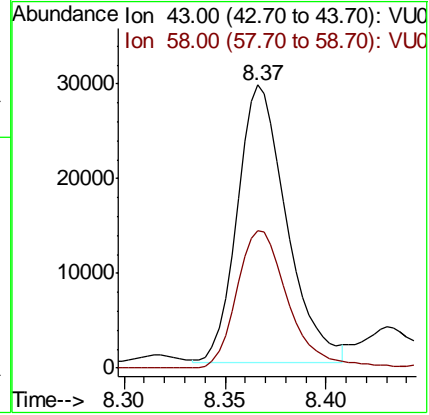
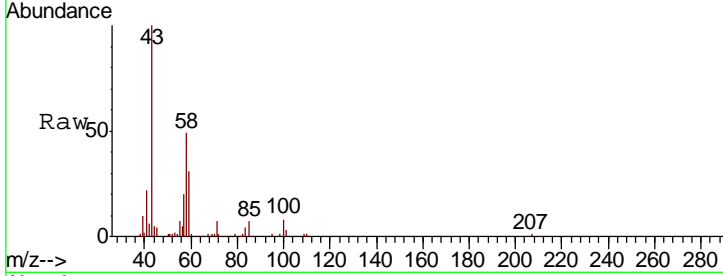




#59  
 2-Hexanone  
 Concen: 8.521 ug/l  
 RT: 8.37 min Scan# 2237  
 Delta R.T. 0.00 min  
 Lab File: VU028096.D  
 Acq: 13 Nov 2018 16:54

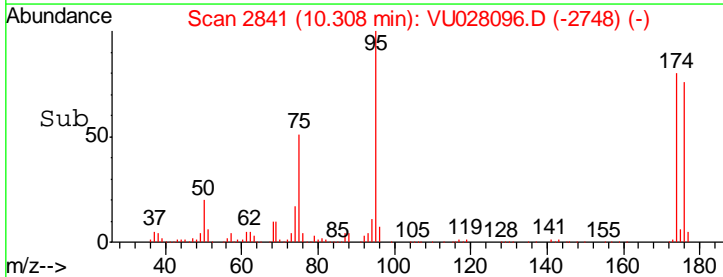
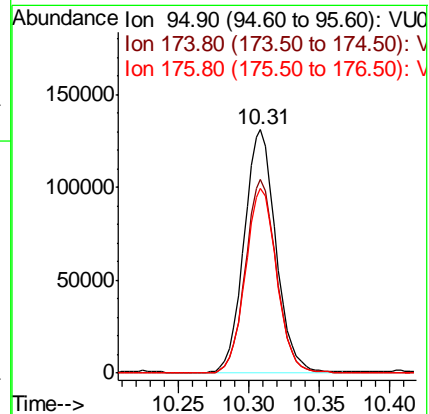
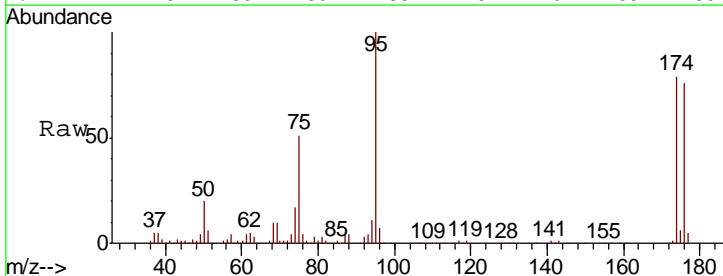
**Instrument :**  
 MSVOA\_U  
**ClientSampled :**  
 SP-TANK1-N29675

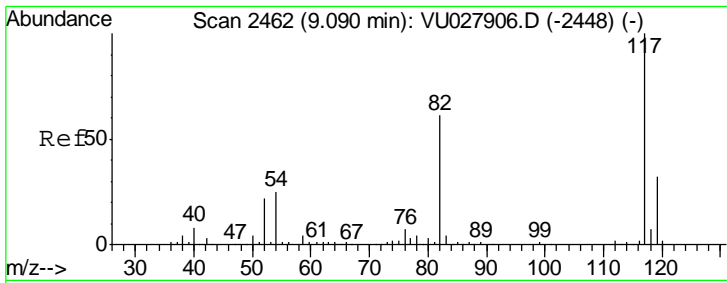
Tgt Ion	Resp	Lower	Upper
43	100		
58	51.8	25.8	77.3



#62  
 4-Bromofluorobenzene  
 Concen: 48.392 ug/l  
 RT: 10.31 min Scan# 2841  
 Delta R.T. 0.00 min  
 Lab File: VU028096.D  
 Acq: 13 Nov 2018 16:54

Tgt Ion	Resp	Lower	Upper
95	100		
174	78.0	0.0	156.4
176	75.3	0.0	150.8

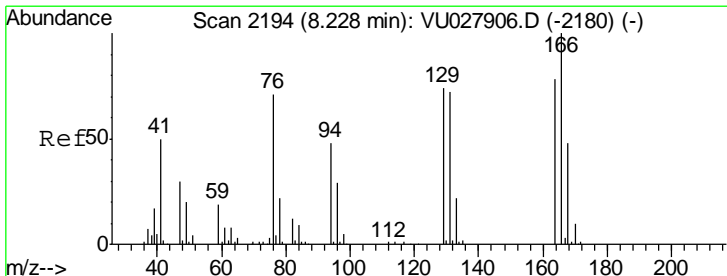
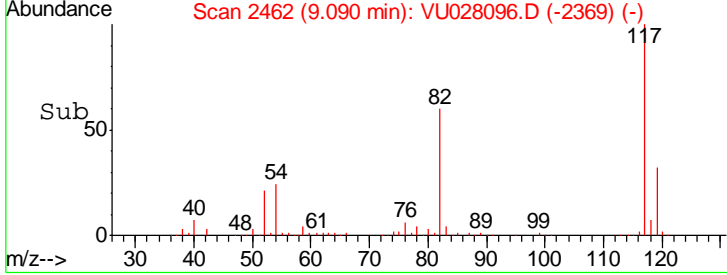
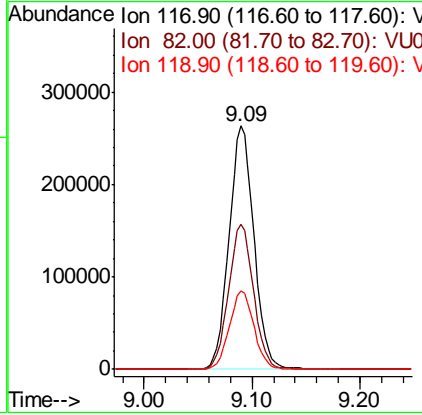
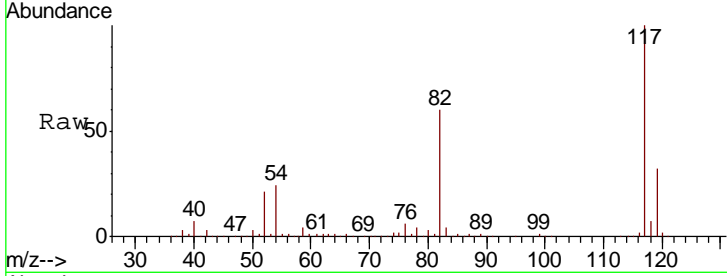




#63  
 Chlorobenzene-d5  
 Concen: 50.000 ug/l  
 RT: 9.09 min Scan# 2462  
 Delta R.T. 0.00 min  
 Lab File: VU028096.D  
 Acq: 13 Nov 2018 16:54

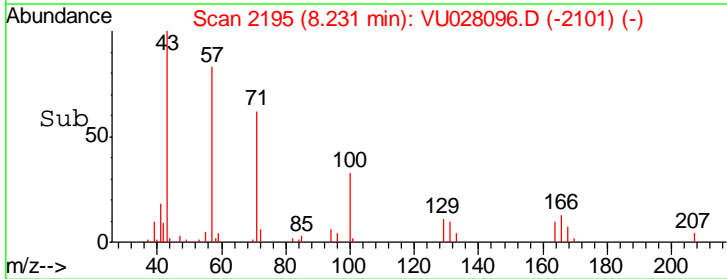
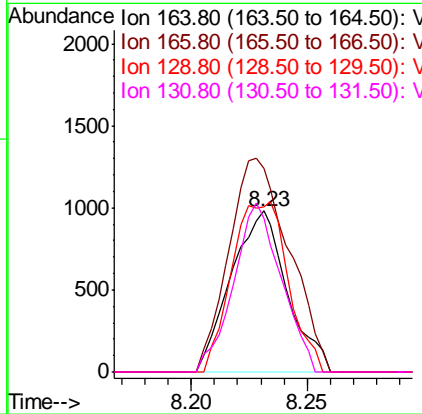
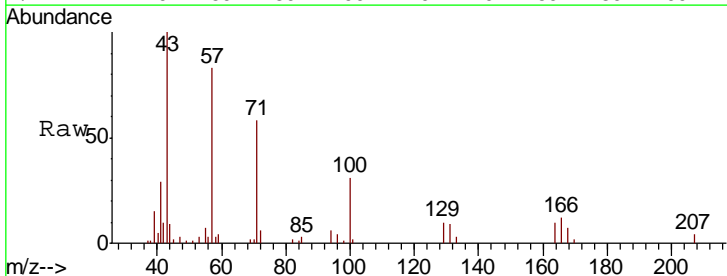
**Instrument :**  
 MSVOA\_U  
**ClientSampled :**  
 SP-TANK1-N29675

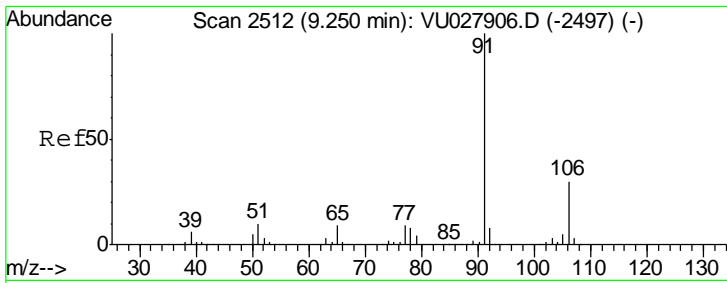
Tgt Ion	Resp	Lower	Upper
117	424819		
82	59.6	48.6	73.0
119	32.3	25.8	38.8



#64  
 Tetrachloroethene  
 Concen: 0.597 ug/l  
 RT: 8.23 min Scan# 2195  
 Delta R.T. 0.00 min  
 Lab File: VU028096.D  
 Acq: 13 Nov 2018 16:54

Tgt Ion	Resp	Lower	Upper
164	1644		
166	126.2	102.1	153.1
129	102.7	75.9	113.9
131	95.4	73.0	109.6

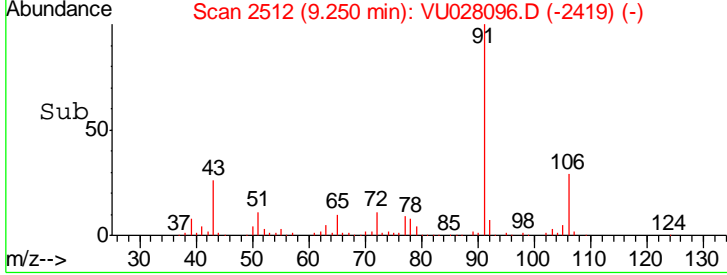
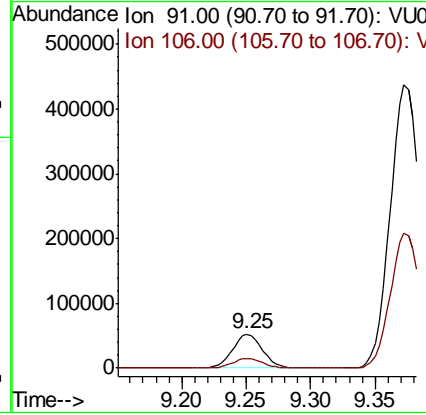
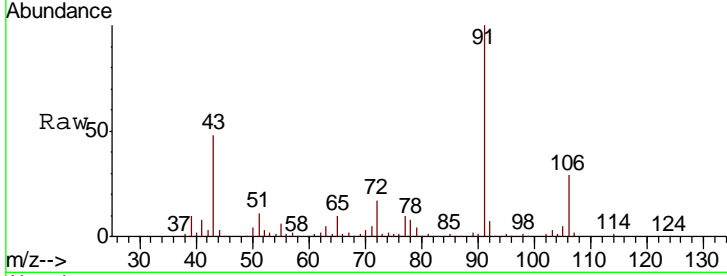




#67  
 Ethyl Benzene  
 Concen: 5.084 ug/l  
 RT: 9.25 min Scan# 2512  
 Delta R.T. 0.00 min  
 Lab File: VU028096.D  
 Acq: 13 Nov 2018 16:54

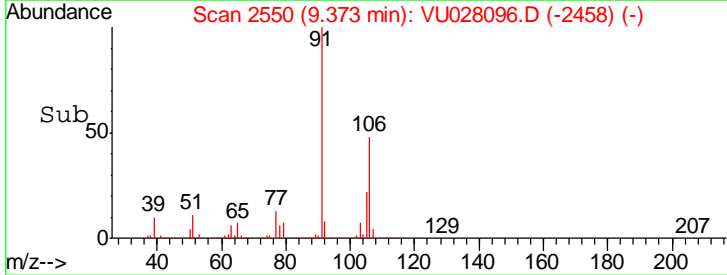
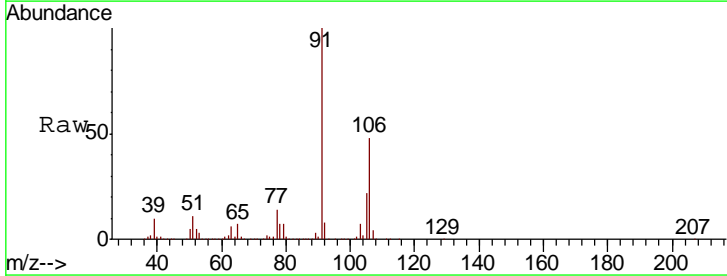
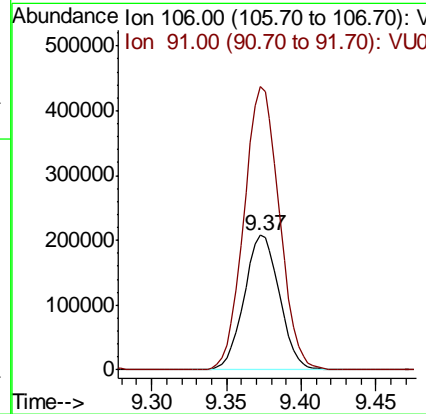
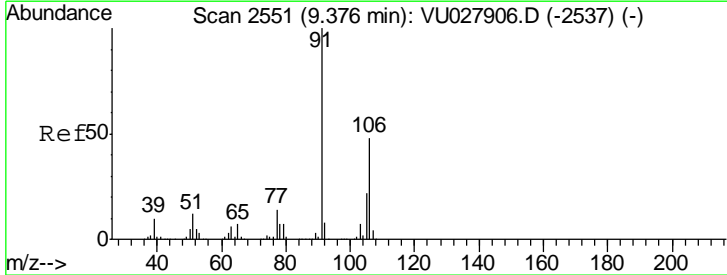
**Instrument :**  
 MSVOA\_U  
**ClientSampleId :**  
 SP-TANK1-N29675

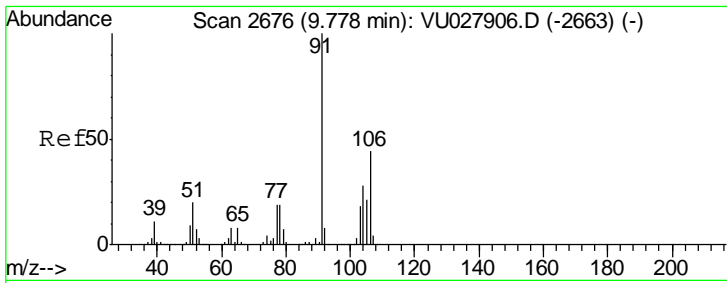
Tgt Ion: 91 Resp: 83996  
 Ion Ratio Lower Upper  
 91 100  
 106 29.2 23.6 35.4



#68  
 m/p-Xylenes  
 Concen: 57.096 ug/l  
 RT: 9.37 min Scan# 2550  
 Delta R.T. -0.00 min  
 Lab File: VU028096.D  
 Acq: 13 Nov 2018 16:54

Tgt Ion: 106 Resp: 342251  
 Ion Ratio Lower Upper  
 106 100  
 91 210.2 168.2 252.4

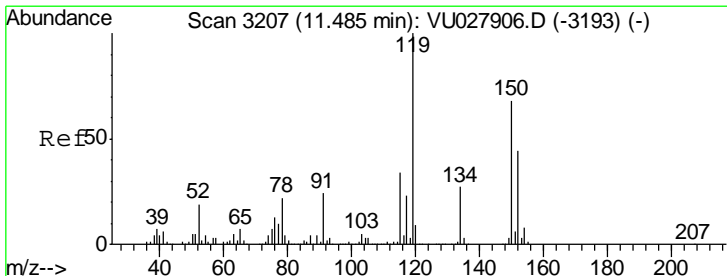
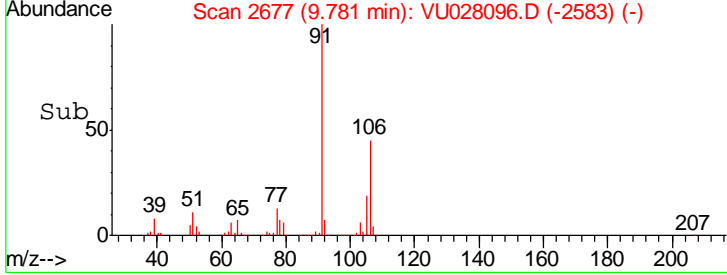
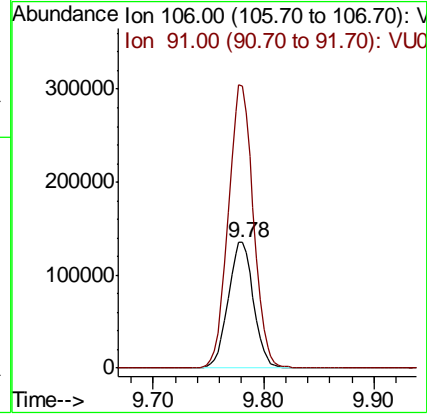
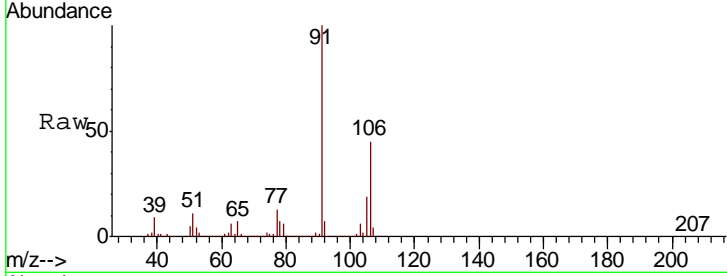




#69  
 o-Xylene  
 Concen: 35.629 ug/l  
 RT: 9.78 min Scan# 2677  
 Delta R.T. 0.00 min  
 Lab File: VU028096.D  
 Acq: 13 Nov 2018 16:54

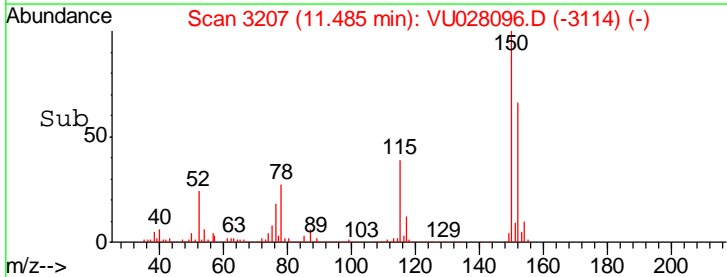
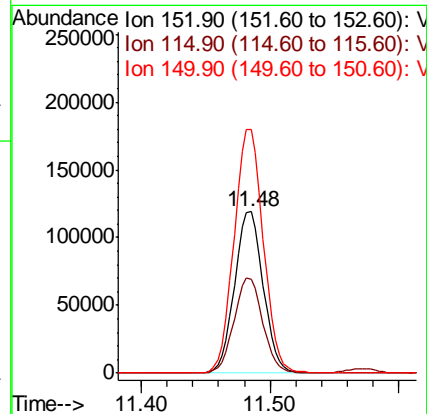
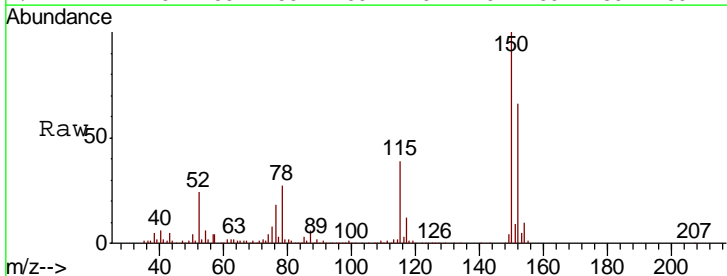
Instrument :  
 MSVOA\_U  
 ClientSampled :  
 SP-TANK1-N29675

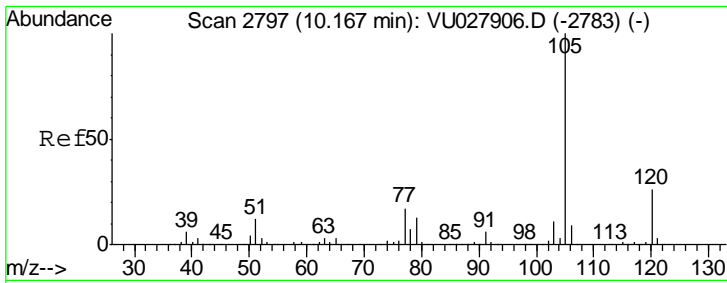
Tgt Ion:106 Resp: 215660  
 Ion Ratio Lower Upper  
 106 100  
 91 223.4 111.1 333.4



#72  
 1,4-Dichlorobenzene-d4  
 Concen: 50.000 ug/l  
 RT: 11.48 min Scan# 3207  
 Delta R.T. 0.00 min  
 Lab File: VU028096.D  
 Acq: 13 Nov 2018 16:54

Tgt Ion:152 Resp: 183694  
 Ion Ratio Lower Upper  
 152 100  
 115 58.8 43.0 129.0  
 150 154.3 0.0 349.4

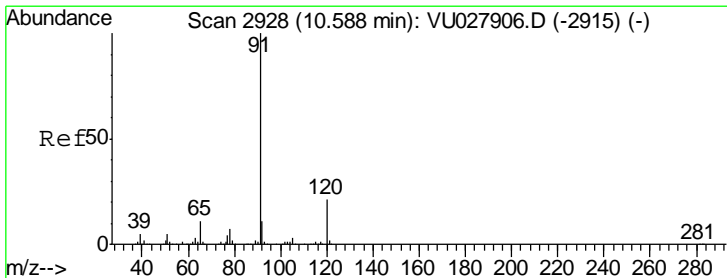
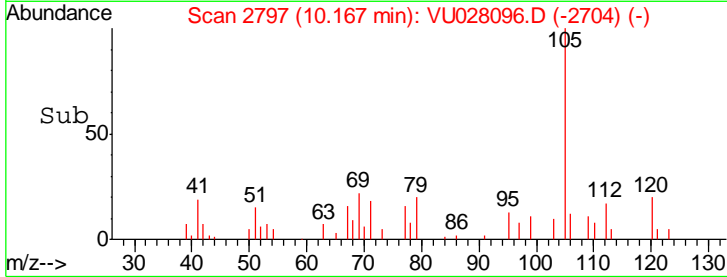
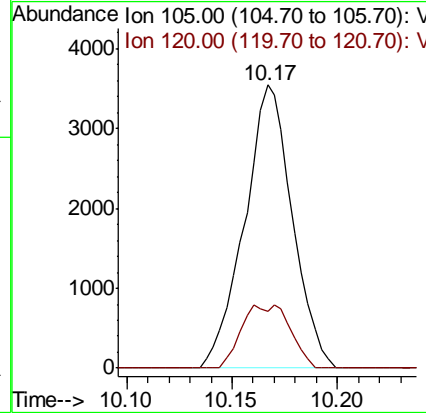
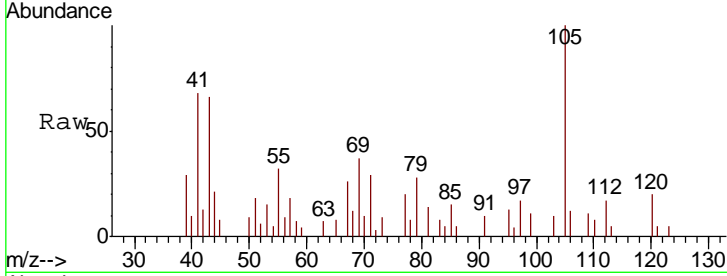




#73  
 Isopropylbenzene  
 Concen: 0.392 ug/l  
 RT: 10.17 min Scan# 2797  
 Delta R.T. 0.00 min  
 Lab File: VU028096.D  
 Acq: 13 Nov 2018 16:54

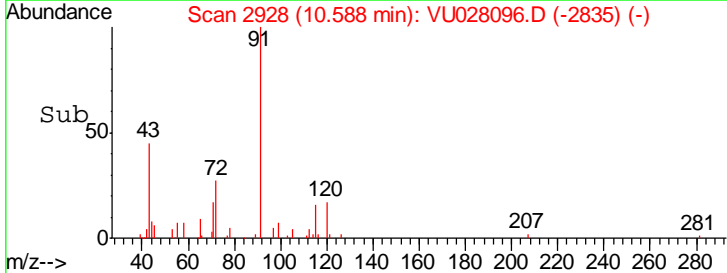
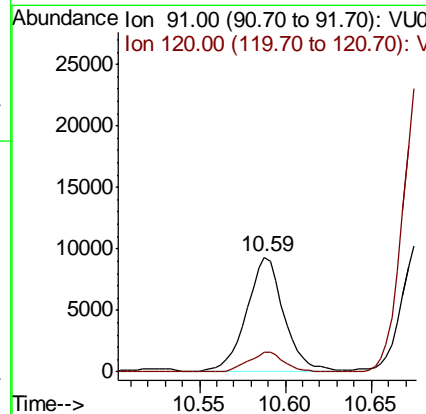
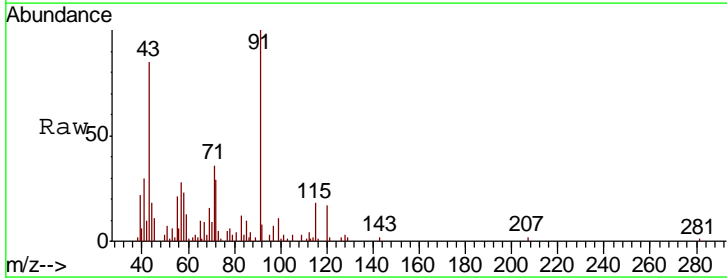
Instrument : MSVOA\_U  
 ClientSampleId : SP-TANK1-N29675

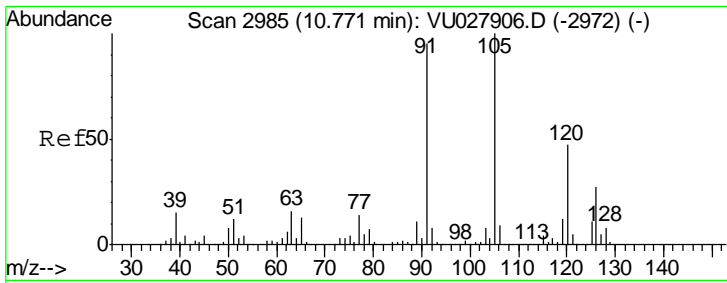
Tgt Ion	Resp	Lower	Upper
105	5581		
105	100		
120	22.7	12.7	38.0



#78  
 n-propylbenzene  
 Concen: 0.830 ug/l  
 RT: 10.59 min Scan# 2928  
 Delta R.T. 0.00 min  
 Lab File: VU028096.D  
 Acq: 13 Nov 2018 16:54

Tgt Ion	Resp	Lower	Upper
91	14138		
91	100		
120	15.9	10.6	31.8

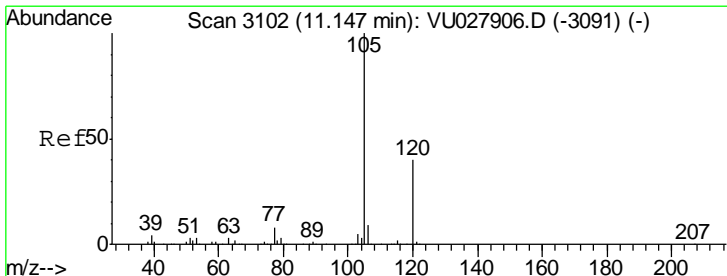
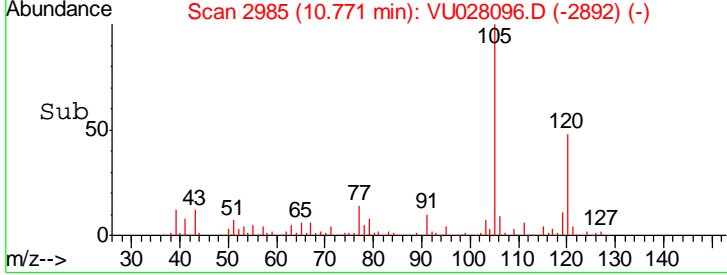
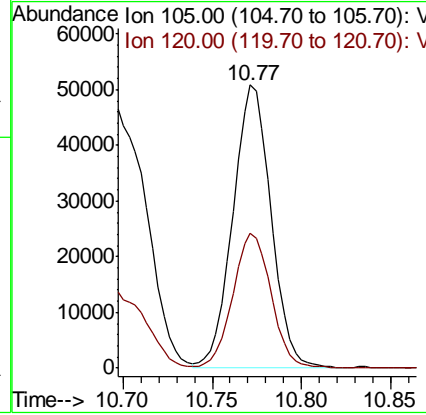
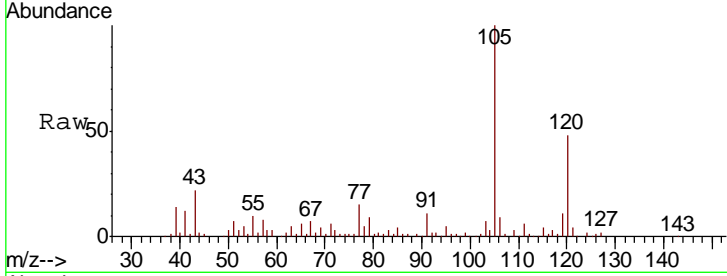




#80  
 1,3,5-Trimethylbenzene  
 Concen: 6.406 ug/l  
 RT: 10.77 min Scan# 2985  
 Delta R.T. 0.00 min  
 Lab File: VU028096.D  
 Acq: 13 Nov 2018 16:54

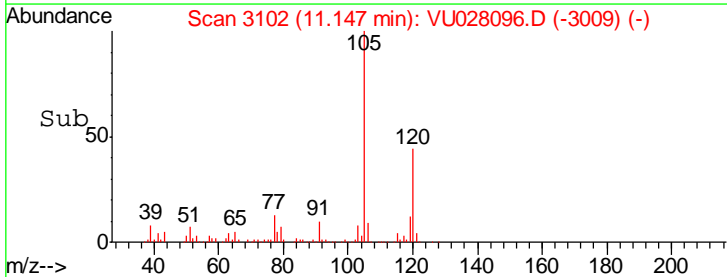
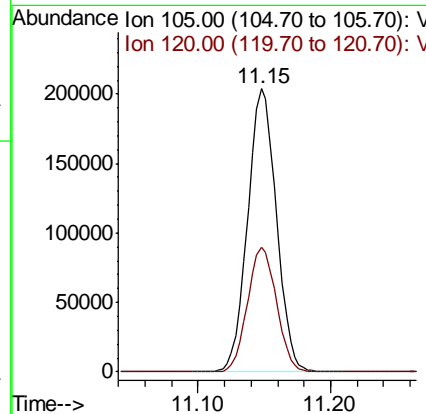
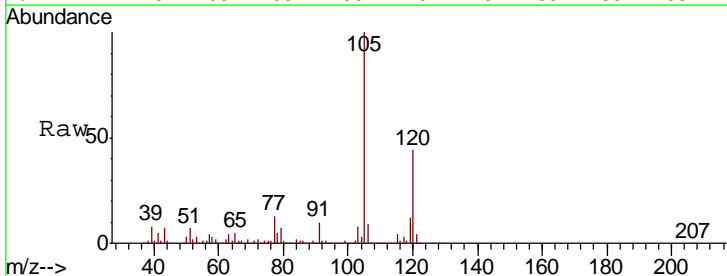
Instrument : MSVOA\_U  
 ClientSampleId : SP-TANK1-N29675

Tgt Ion	Resp	Lower	Upper
105	100		
120	47.9	23.3	69.9

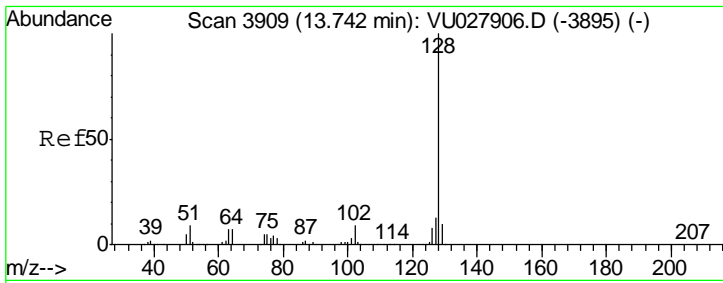


#84  
 1,2,4-Trimethylbenzene  
 Concen: 25.871 ug/l  
 RT: 11.15 min Scan# 3102  
 Delta R.T. 0.00 min  
 Lab File: VU028096.D  
 Acq: 13 Nov 2018 16:54

Tgt Ion	Resp	Lower	Upper
105	100		
120	44.4	22.1	66.1







#95  
 Naphthalene  
 Concen: 10.608 ug/l  
 RT: 13.74 min Scan# 3909  
 Delta R.T. 0.00 min  
 Lab File: VU028096.D  
 Acq: 13 Nov 2018 16:54

Instrument : MSVOA\_U  
 ClientSampled : SP-TANK1-N29675

Tot Ion	Ratio	Lower	Upper
128	100		
127	13.0	10.4	15.6
129	11.4	8.3	12.5

