

Data Path : Z:\voasrv\HPCHEM1\MSVOA\_U\Data\VU111323\  
 Data File : VU056278.D  
 Acq On : 14 Nov 2023 02:08  
 Operator : MD/SY  
 Sample : 05372-07  
 Misc : 5.0mL/MSVOA\_U/WATER  
 ALS Vial : 1 Sample Multiplier: 1

Instrument :  
 MSVOA\_U  
 ClientSampleId :

Quant Time: Nov 14 21:48:22 2023  
 Quant Method : Z:\voasrv\HPCHEM1\MSVOA\_U\Method\SFAMUTR111323WMA.M  
 Quant Title : TRACE VOA SFAM1.0  
 QLast Update : Tue Nov 14 00:08:30 2023  
 Response via : Initial Calibration

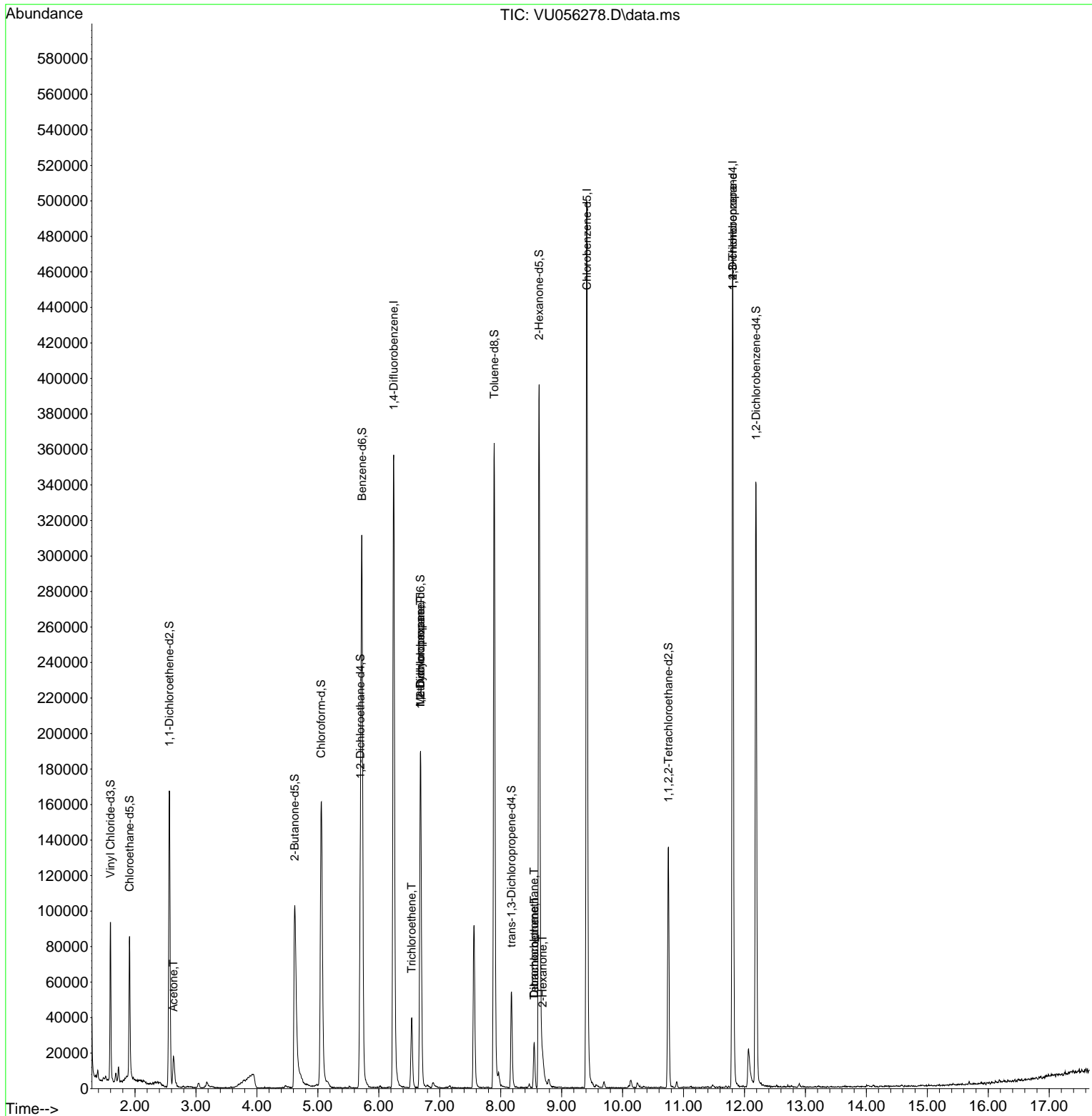
Compound	R.T.	QIon	Response	Conc	Units	Dev(Min)
-----						
Internal Standards						
1) 1,4-Difluorobenzene	6.245	114	296928	5.000	ug/L	0.00
28) Chlorobenzene-d5	9.415	117	289293	5.000	ug/L	0.00
58) 1,4-Dichlorobenzene-d4	11.807	152	127193	5.000	ug/L	0.00
System Monitoring Compounds						
4) Vinyl Chloride-d3	1.599	65	65407	2.945	ug/L	0.00
Spiked Amount	5.000	Range 40 - 130	Recovery	=	59.000%	
7) Chloroethane-d5	1.911	69	54843	3.221	ug/L	0.00
Spiked Amount	5.000	Range 65 - 130	Recovery	=	64.400%#	
11) 1,1-Dichloroethene-d2	2.563	65	32017	3.267	ug/L	0.00
Spiked Amount	5.000	Range 60 - 125	Recovery	=	65.400%	
20) 2-Butanone-d5	4.621	46	172219	38.888	ug/L	0.00
Spiked Amount	50.000	Range 40 - 130	Recovery	=	77.780%	
24) Chloroform-d	5.055	84	154600	3.599	ug/L	0.00
Spiked Amount	5.000	Range 70 - 125	Recovery	=	72.000%	
26) 1,2-Dichloroethane-d4	5.698	65	73735	3.715	ug/L	0.00
Spiked Amount	5.000	Range 70 - 130	Recovery	=	74.200%	
32) Benzene-d6	5.724	84	298632	3.465	ug/L	0.00
Spiked Amount	5.000	Range 70 - 125	Recovery	=	69.200%#	
36) 1,2-Dichloropropane-d6	6.685	67	97083	3.737	ug/L	0.00
Spiked Amount	5.000	Range 60 - 140	Recovery	=	74.800%	
41) Toluene-d8	7.894	98	253746	3.334	ug/L	0.00
Spiked Amount	5.000	Range 70 - 130	Recovery	=	66.600%#	
43) trans-1,3-Dichloroprop...	8.177	79	33127	3.325	ug/L	0.00
Spiked Amount	5.000	Range 55 - 130	Recovery	=	66.600%	
46) 2-Hexanone-d5	8.631	63	140069	35.776	ug/L	0.00
Spiked Amount	50.000	Range 45 - 130	Recovery	=	71.560%	
56) 1,1,2,2-Tetrachloroeth...	10.753	84	69424	3.740	ug/L	0.00
Spiked Amount	5.000	Range 65 - 120	Recovery	=	74.800%	
66) 1,2-Dichlorobenzene-d4	12.190	152	90091	3.834	ug/L	0.00
Spiked Amount	5.000	Range 80 - 120	Recovery	=	76.600%#	
-----						
Target Compounds						Qvalue
13) Acetone	2.631	43	24103	6.390	ug/L	97
34) Trichloroethene	6.541	95	14460	0.643	ug/L	96
35) Methylcyclohexane	6.685	83	22161	0.683	ug/L #	19
37) 1,2-Dichloropropane	6.682	63	9863	0.458	ug/L #	88
47) Tetrachloroethene	8.553	164	5601	0.369	ug/L	91
48) 2-Hexanone	8.688	43	11074	1.332	ug/L #	36
49) Dibromochloromethane	8.550	129	6204	0.381	ug/L #	12
61) 1,2,3-Trichloropropane	11.807	75	16375	1.500	ug/L #	68
-----						

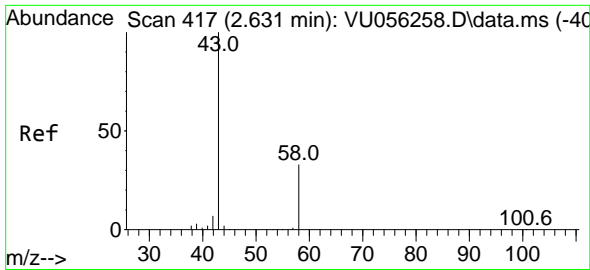
(#) = qualifier out of range (m) = manual integration (+) = signals summed

Data Path : Z:\voasrv\HPCHEM1\MSVOA\_U\Data\VU111323\  
 Data File : VU056278.D  
 Acq On : 14 Nov 2023 02:08  
 Operator : MD/SY  
 Sample : 05372-07  
 Misc : 5.0mL/MSVOA\_U/WATER  
 ALS Vial : 1 Sample Multiplier: 1

Instrument :  
 MSVOA\_U  
 ClientSampleId :

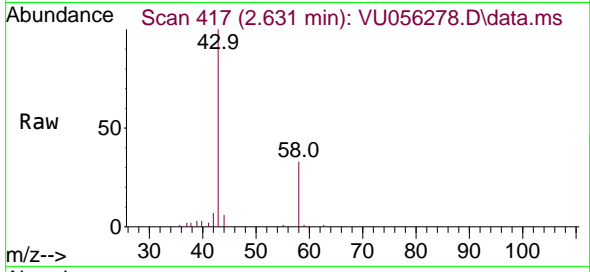
Quant Time: Nov 14 21:48:22 2023  
 Quant Method : Z:\voasrv\HPCHEM1\MSVOA\_U\Method\SFAMUTR111323WMA.M  
 Quant Title : TRACE VOA SFAM1.0  
 QLast Update : Tue Nov 14 00:08:30 2023  
 Response via : Initial Calibration



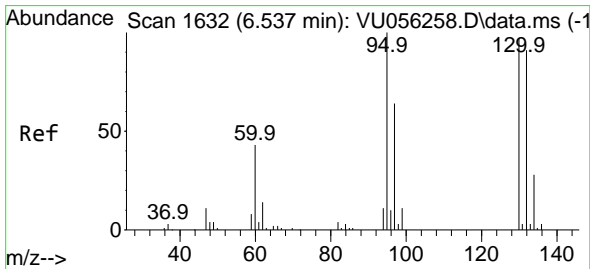
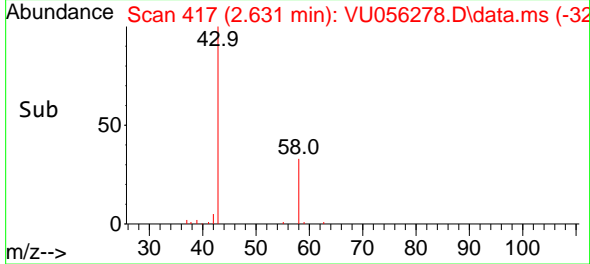
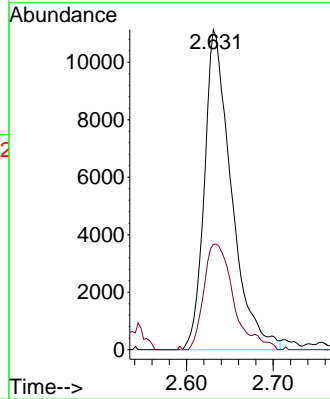


#13  
 Acetone  
 Concen: 6.390 ug/L  
 RT: 2.631 min Scan# 413  
 Delta R.T. -0.000 min  
 Lab File: VU056278.D  
 Acq: 14 Nov 2023 02:08

Instrument :  
 MSVOA\_U  
 ClientSampleId :

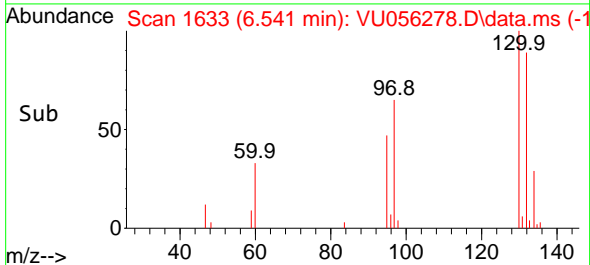
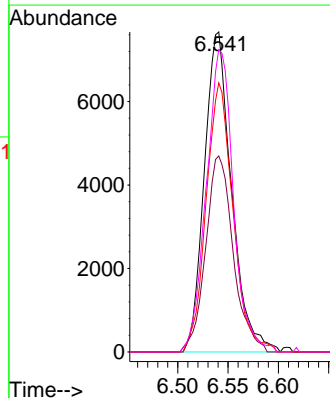
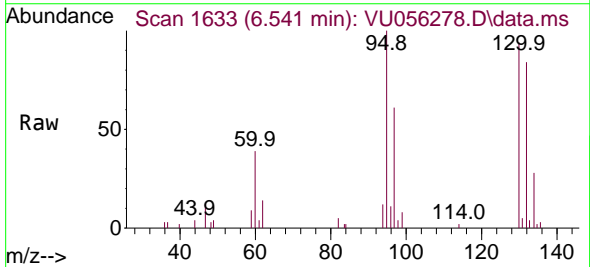


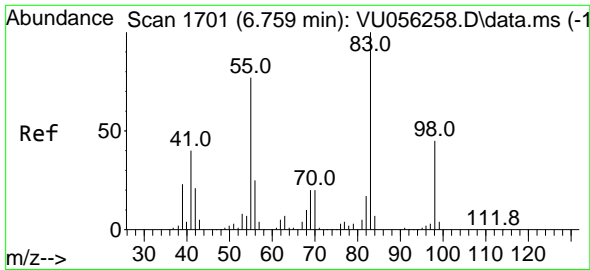
Tgt Ion: 43 Resp: 24103  
 Ion Ratio Lower Upper  
 43 100  
 58 36.5 0.0 70.0



#34  
 Trichloroethene  
 Concen: 0.643 ug/L  
 RT: 6.541 min Scan# 1633  
 Delta R.T. 0.003 min  
 Lab File: VU056278.D  
 Acq: 14 Nov 2023 02:08

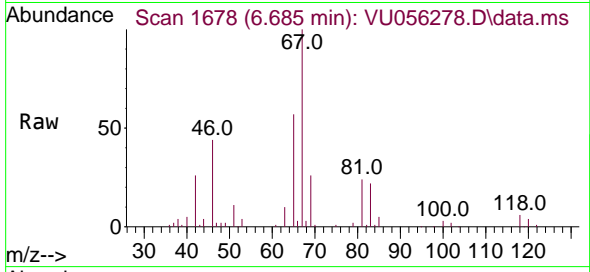
Tgt Ion: 95 Resp: 14460  
 Ion Ratio Lower Upper  
 95 100  
 97 61.2 46.5 86.3  
 132 84.1 62.0 115.2  
 130 94.4 66.3 123.1



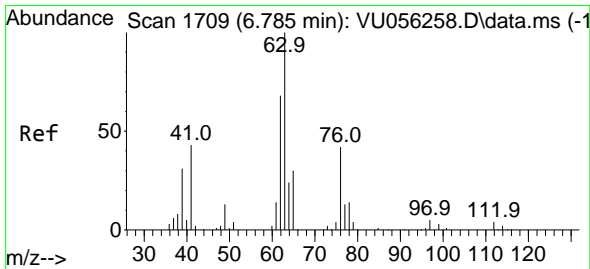
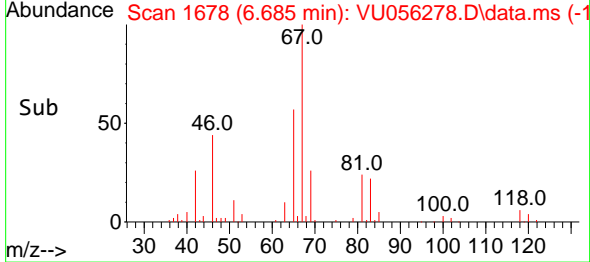
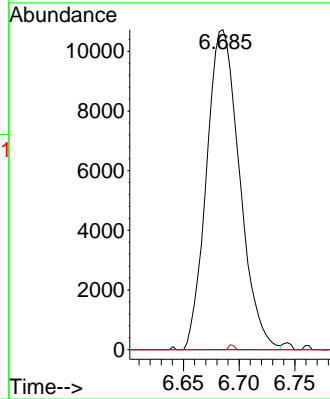


#35  
 Methylcyclohexane  
 Concen: 0.683 ug/L  
 RT: 6.685 min Scan# 1677  
 Delta R.T. -0.074 min  
 Lab File: VU056278.D  
 Acq: 14 Nov 2023 02:08

Instrument : MSVOA\_U  
 ClientSampleId :

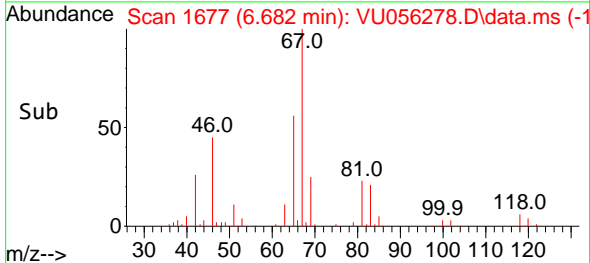
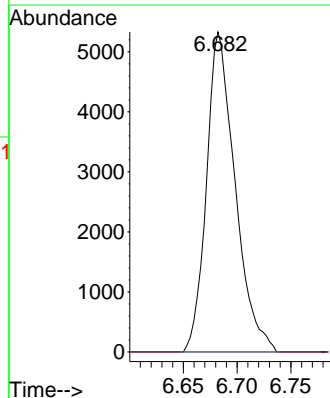
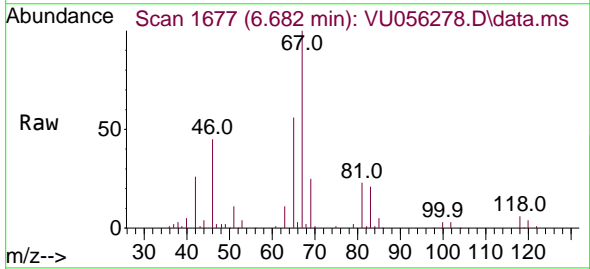


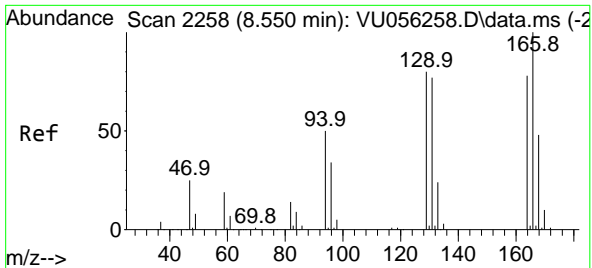
Tgt Ion: 83 Resp: 22161  
 Ion Ratio Lower Upper  
 83 100  
 55 0.9 62.9 94.3#  
 98 0.3 35.3 52.9#



#37  
 1,2-Dichloropropane  
 Concen: 0.458 ug/L  
 RT: 6.682 min Scan# 1677  
 Delta R.T. -0.103 min  
 Lab File: VU056278.D  
 Acq: 14 Nov 2023 02:08

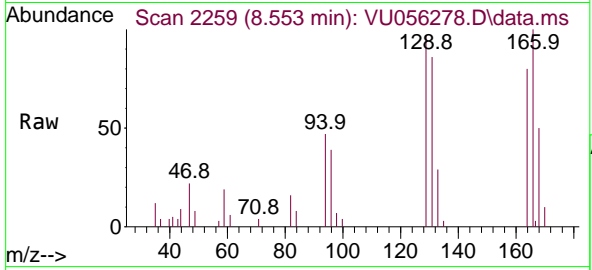
Tgt Ion: 63 Resp: 9863  
 Ion Ratio Lower Upper  
 63 100  
 112 0.0 3.2 4.8#





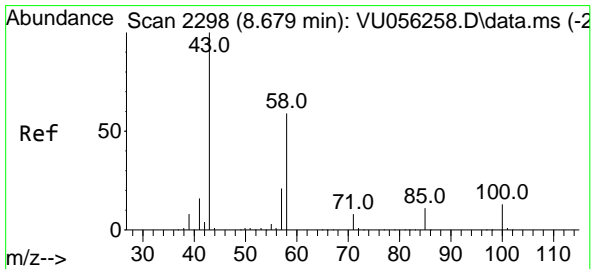
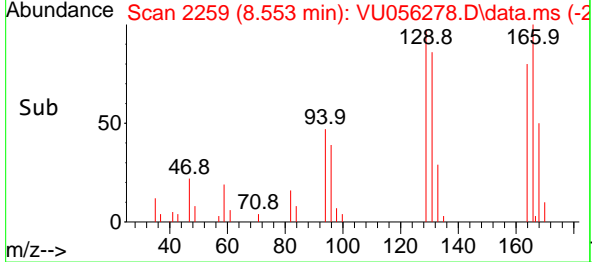
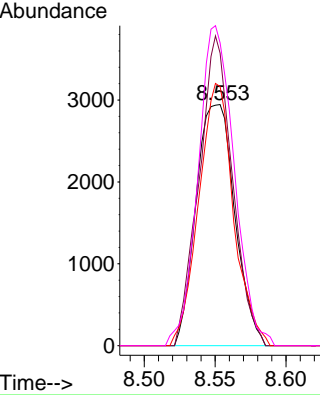
#47  
 Tetrachloroethene  
 Concen: 0.369 ug/L  
 RT: 8.553 min Scan# 2101  
 Delta R.T. 0.003 min  
 Lab File: VU056278.D  
 Acq: 14 Nov 2023 02:08

Instrument : MSVOA\_U  
 ClientSampleId :

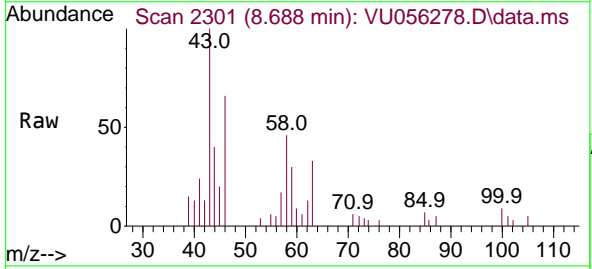


Tgt Ion:164 Resp: 5601

Ion	Ratio	Lower	Upper
164	100		
129	121.3	71.0	131.9
131	107.4	70.3	130.7
166	125.6	89.8	166.8

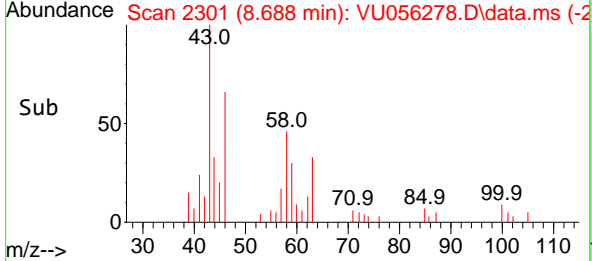
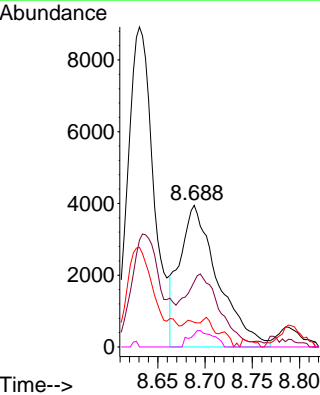


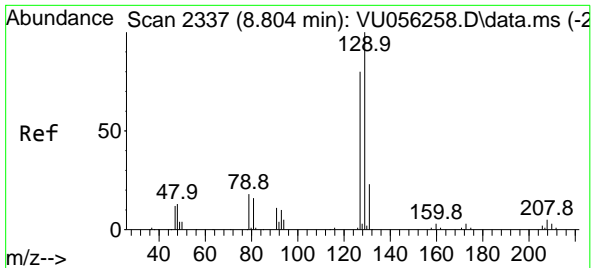
#48  
 2-Hexanone  
 Concen: 1.332 ug/L  
 RT: 8.688 min Scan# 2301  
 Delta R.T. 0.010 min  
 Lab File: VU056278.D  
 Acq: 14 Nov 2023 02:08



Tgt Ion: 43 Resp: 11074

Ion	Ratio	Lower	Upper
43	100		
58	0.0	48.7	73.1#
57	3.7	16.8	25.2#
100	0.0	9.9	14.9#

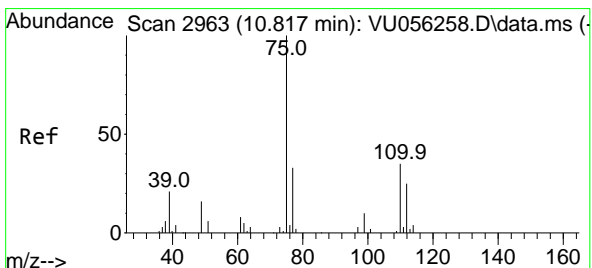
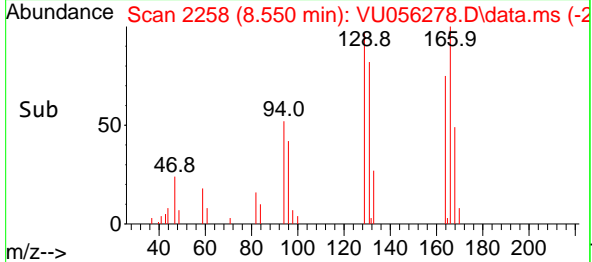
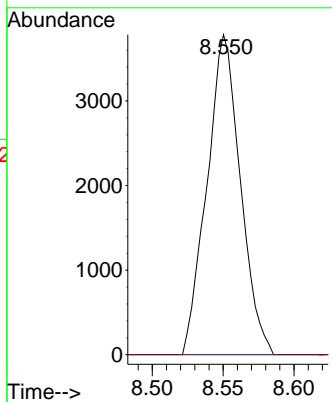
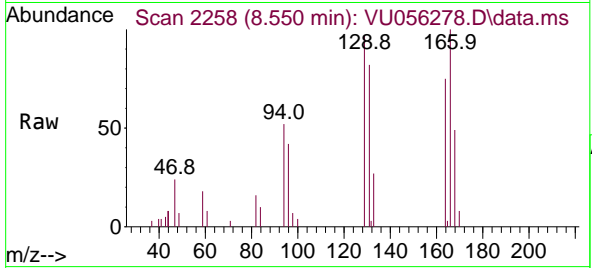




#49  
 Dibromochloromethane  
 Concen: 0.381 ug/L  
 RT: 8.550 min Scan# 21  
 Delta R.T. -0.254 min  
 Lab File: VU056278.D  
 Acq: 14 Nov 2023 02:08

Instrument :  
 MSVOA\_U  
 ClientSampleId :

Tgt Ion:129 Resp: 6204  
 Ion Ratio Lower Upper  
 129 100  
 127 0.0 52.9 98.3#



#61  
 1,2,3-Trichloropropane  
 Concen: 1.500 ug/L  
 RT: 11.807 min Scan# 3271  
 Delta R.T. 0.990 min  
 Lab File: VU056278.D  
 Acq: 14 Nov 2023 02:08

Tgt Ion: 75 Resp: 16375  
 Ion Ratio Lower Upper  
 75 100  
 110 2.2 30.4 45.6#  
 77 33.9 27.0 40.6

