

Data Path : Z:\VOASRV\HPCHEM1\MSVOA U\DATA\VU111418\
 Data File : VU028116.D
 Acq On : 14 Nov 2018 12:35
 Operator : MD/SY
 Sample : VSTDCCC005
 Misc : 25.0mL/MSVOA U/WATER
 ALS Vial : 8 Sample Multiplier: 1

Instrument :
 MSVOA_U
 ClientSampleId :

Quant Time: Nov 15 04:23:51 2018
 Quant Method : Z:\VOASRV\HPCHEM1\MSVOA_U\METHOD\SOMUTR111418WMA.M
 Quant Title : TRACE VOA SOM01.0
 QLast Update : Thu Nov 15 04:19:48 2018
 Response via : Initial Calibration

Internal Standards	R.T.	QIon	Response	Conc	Units	Dev(Min)
1) 1,4-Difluorobenzene	5.89	114	177310	5.00	ug/L	0.00
28) Chlorobenzene-d5	9.09	117	165343	5.00	ug/L	0.00
60) 1,4-Dichlorobenzene-d4	11.49	152	78714	5.00	ug/L	0.00

System Monitoring Compounds

4) Vinyl Chloride-d3	1.40	65	69836	4.75	ug/L	0.00
Spiked Amount	5.000	Range	40 - 130	Recovery	=	95.00%
7) Chloroethane-d5	1.68	69	55020	4.71	ug/L	0.00
Spiked Amount	5.000	Range	65 - 130	Recovery	=	94.20%
11) 1,1-Dichloroethene-d2	2.28	63	132184	4.81	ug/L	0.00
Spiked Amount	5.000	Range	60 - 125	Recovery	=	96.20%
20) 2-Butanone-d5	4.21	46	213542	50.04	ug/L	0.00
Spiked Amount	50.000	Range	40 - 130	Recovery	=	100.08%
24) Chloroform-d	4.65	84	114873	4.91	ug/L	0.00
Spiked Amount	5.000	Range	70 - 125	Recovery	=	98.20%
26) 1,2-Dichloroethane-d4	5.32	65	62286	4.77	ug/L	0.00
Spiked Amount	5.000	Range	70 - 130	Recovery	=	95.40%
32) Benzene-d6	5.34	84	235709	4.96	ug/L	0.00
Spiked Amount	5.000	Range	70 - 125	Recovery	=	99.20%
36) 1,2-Dichloropropane-d6	6.33	67	83688	4.93	ug/L	0.00
Spiked Amount	5.000	Range	60 - 140	Recovery	=	98.60%
41) Toluene-d8	7.57	98	213280	4.83	ug/L	0.00
Spiked Amount	5.000	Range	70 - 130	Recovery	=	96.60%
43) trans-1,3-Dichloropropene-	7.85	79	30025	4.96	ug/L	0.00
Spiked Amount	5.000	Range	55 - 130	Recovery	=	99.20%
46) 2-Hexanone-d5	8.31	63	172218	49.78	ug/L	0.00
Spiked Amount	50.000	Range	45 - 130	Recovery	=	99.56%
57) 1,1,2,2-Tetrachloroethane-	10.43	84	59637	4.97	ug/L	0.00
Spiked Amount	5.000	Range	65 - 120	Recovery	=	99.40%
64) 1,2-Dichlorobenzene-d4	11.86	152	72448	4.93	ug/L	0.00
Spiked Amount	5.000	Range	80 - 120	Recovery	=	98.60%

Target Compounds

Target Compounds	R.T.	QIon	Response	Conc	Units	Ovalue
2) Dichlorodifluoromethane	1.21	85	75664	4.838	ug/L	99
3) Chloromethane	1.33	50	96688	4.837	ug/L	97
5) Vinyl chloride	1.40	62	93503	4.923	ug/L	99
6) Bromomethane	1.63	94	45330	4.983	ug/L	98
8) Chloroethane	1.70	64	53242	4.657	ug/L	100
9) Trichlorofluoromethane	1.89	101	102048	4.926	ug/L	99
10) 1,1,2-Trichloro-1,2,2-trif	2.29	101	57538	4.947	ug/L	98
12) 1,1-Dichloroethene	2.29	96	56382	4.782	ug/L	94
13) Acetone	2.35	43	141738	49.316	ug/L	100
14) Carbon disulfide	2.48	76	190242	4.812	ug/L	99
15) Methyl Acetate	2.63	43	36390	4.735	ug/L	99
16) Methylene chloride	2.70	84	67286	4.831	ug/L	99
17) Methyl tert-butyl Ether	3.01	73	157976	4.793	ug/L	99
18) trans-1,2-Dichloroethene	2.98	96	61342	4.894	ug/L	92
19) 1,1-Dichloroethane	3.45	63	128306	4.867	ug/L	98
21) 2-Butanone	4.30	43	228061	50.281	ug/L	100
22) cis-1,2-Dichloroethene	4.23	96	67149	4.859	ug/L	99

Data Path : Z:\VOASRV\HPCHEM1\MSVOA U\DATA\VU111418\
 Data File : VU028116.D
 Acq On : 14 Nov 2018 12:35
 Operator : MD/SY
 Sample : VSTDCCC005
 Misc : 25.0mL/MSVOA U/WATER
 ALS Vial : 8 Sample Multiplier: 1

Instrument :
 MSVOA_U
 ClientSampleId :

Quant Time: Nov 15 04:23:51 2018
 Quant Method : Z:\VOASRV\HPCHEM1\MSVOA_U\METHOD\SOMUTR111418WMA.M
 Quant Title : TRACE VOA SOM01.0
 QLast Update : Thu Nov 15 04:19:48 2018
 Response via : Initial Calibration

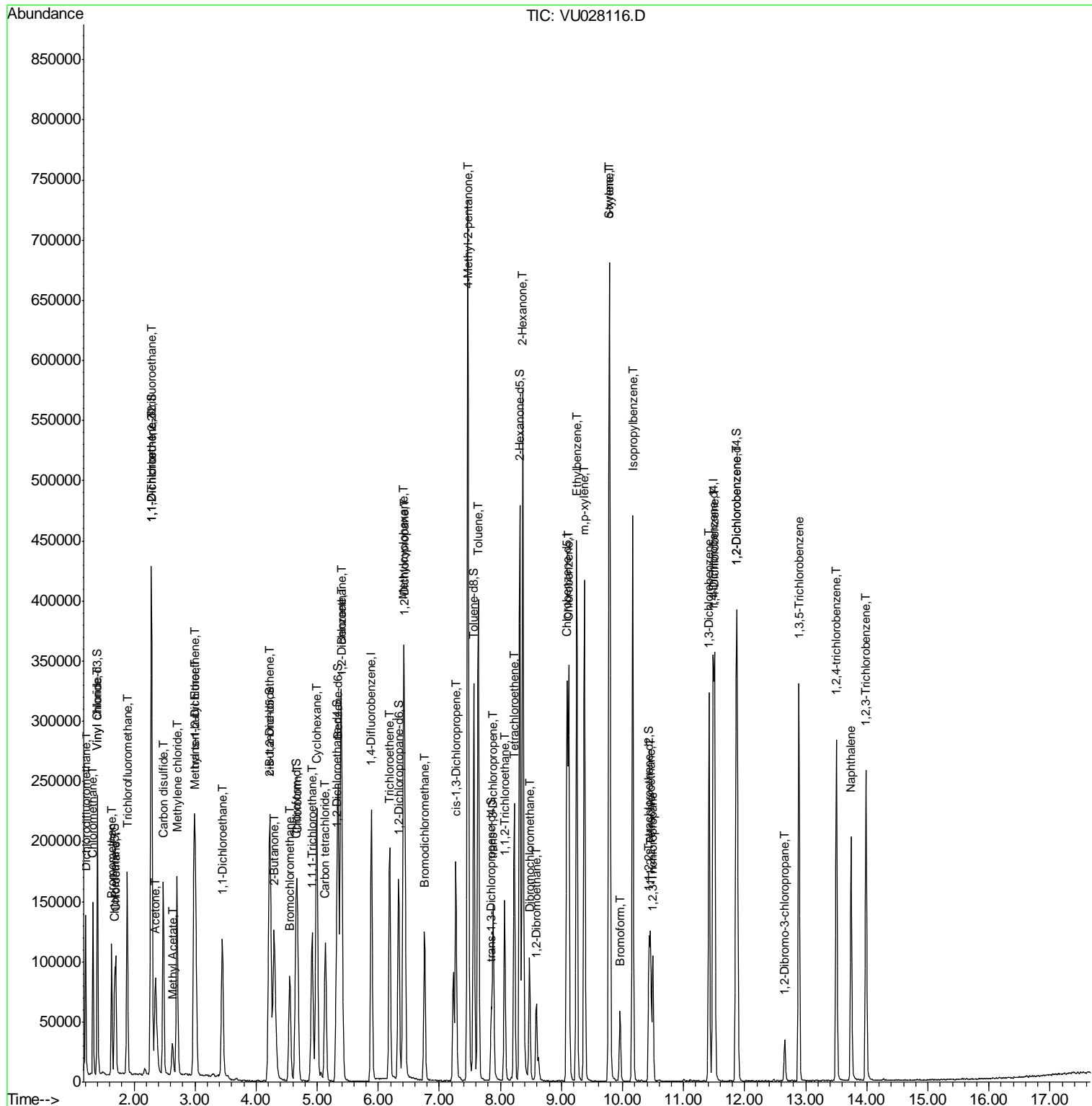
Internal Standards	R.T.	QIon	Response	Conc	Units	Dev(Min)
23) Bromochloromethane	4.55	128	26278	4.812	ug/L	98
25) Chloroform	4.68	83	117696	4.978	ug/L	99
27) 1,2-Dichloroethane	5.41	62	78661	5.061	ug/L	99
29) 1,1,1-Trichloroethane	4.92	97	94217	5.035	ug/L	99
30) Cyclohexane	4.99	56	131283	5.003	ug/L	99
31) Carbon tetrachloride	5.13	117	77798	5.009	ug/L	99
33) Benzene	5.39	78	275328	4.943	ug/L	100
34) Trichloroethene	6.19	95	67664	4.915	ug/L	98
35) Methylcyclohexane	6.41	83	119058	5.031	ug/L	99
37) 1,2-Dichloropropane	6.43	63	78471	5.094	ug/L	99
38) Bromodichloromethane	6.76	83	80567	4.916	ug/L	98
39) cis-1,3-Dichloropropene	7.27	75	105136	5.048	ug/L	96
40) 4-Methyl-2-pentanone	7.47	43	532146	50.167	ug/L	100
42) Toluene	7.64	91	284736	4.958	ug/L	99
44) trans-1,3-Dichloropropene	7.88	75	80739	4.947	ug/L	99
45) 1,1,2-Trichloroethane	8.07	97	46354	4.984	ug/L	98
47) Tetrachloroethene	8.22	164	49801	4.449	ug/L	95
48) 2-Hexanone	8.37	43	383938	50.868	ug/L	100
49) Dibromochloromethane	8.48	129	49744	5.025	ug/L	94
50) 1,2-Dibromoethane	8.59	107	43722	4.994	ug/L	99
51) Chlorobenzene	9.12	112	164462	4.897	ug/L	98
52) Ethylbenzene	9.25	91	311060	4.962	ug/L	100
53) m,p-xylene	9.38	106	113506	4.970	ug/L	96
54) o-xylene	9.78	106	110424	5.022	ug/L	99
55) Styrene	9.79	104	188046	5.057	ug/L	96
56) Isopropylbenzene	10.17	105	295706	4.972	ug/L	100
58) 1,1,2,2-Tetrachloroethane	10.46	83	60007	5.006	ug/L	99
59) 1,2,3-Trichloropropane	10.49	75	43433	5.020	ug/L	98
61) Bromoform	9.96	173	25545	4.799	ug/L	99
62) 1,3-Dichlorobenzene	11.42	146	124022	4.983	ug/L	99
63) 1,4-Dichlorobenzene	11.51	146	123723	4.911	ug/L	98
65) 1,2-Dichlorobenzene	11.88	146	115729	4.862	ug/L	99
66) 1,2-Dibromo-3-chloropropan	12.66	75	8376	4.850	ug/L	95
67) 1,3,5-Trichlorobenzene	12.89	180	97203	5.091	ug/L	97
68) 1,2,4-trichlorobenzene	13.50	180	84082	5.052	ug/L	99
69) Naphthalene	13.74	128	157573	5.081	ug/L	100
70) 1,2,3-Trichlorobenzene	13.99	180	78405	5.114	ug/L	97

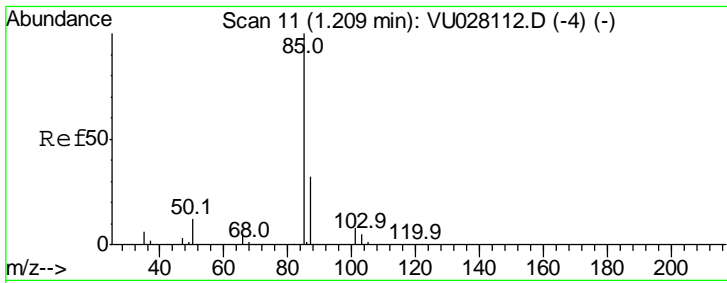
(#) = qualifier out of range (m) = manual integration (+) = signals summed

Data Path : Z:\VOASRV\HPCHEM1\MSVOA U\DATA\VU111418\
 Data File : VU028116.D
 Acq On : 14 Nov 2018 12:35
 Operator : MD/SY
 Sample : VSTDCCC005
 Misc : 25.0mL/MSVOA U/WATER
 ALS Vial : 8 Sample Multiplier: 1

Instrument :
 MSVOA_U
 ClientSampled :

Quant Time: Nov 15 04:23:51 2018
 Quant Method : Z:\VOASRV\HPCHEM1\MSVOA_U\METHOD\SOMUTR111418WMA.M
 Quant Title : TRACE VOA SOM01.0
 QLast Update : Thu Nov 15 04:19:48 2018
 Response via : Initial Calibration

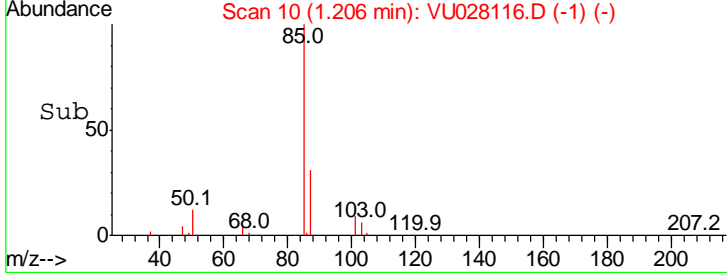
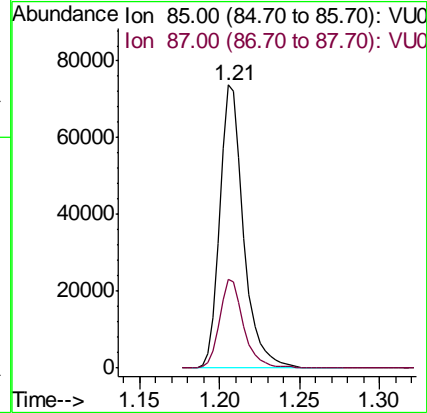
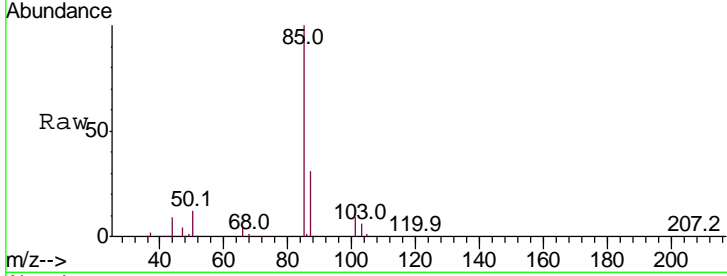




#2
 Dichlorodifluoromethane
 Concen: 4.838 ug/L
 RT: 1.21 min Scan# 10
 Delta R.T. -0.00 min
 Lab File: VU028116.D
 Acq: 14 Nov 2018 12:35

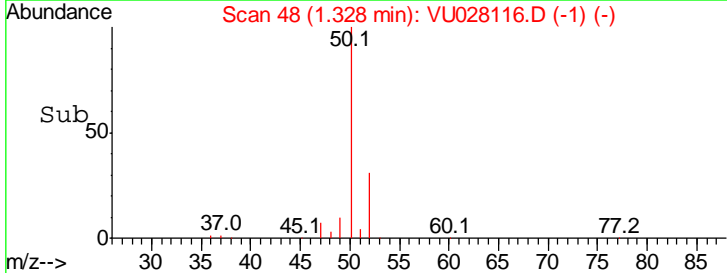
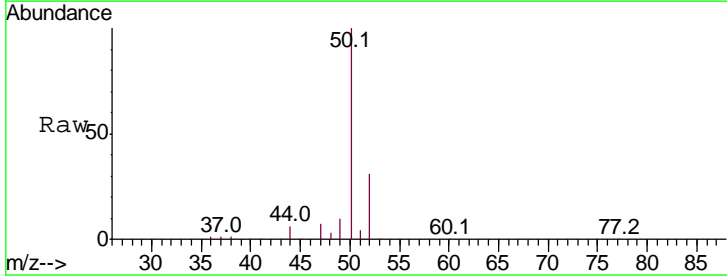
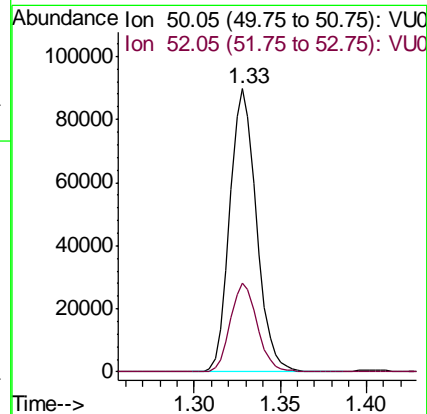
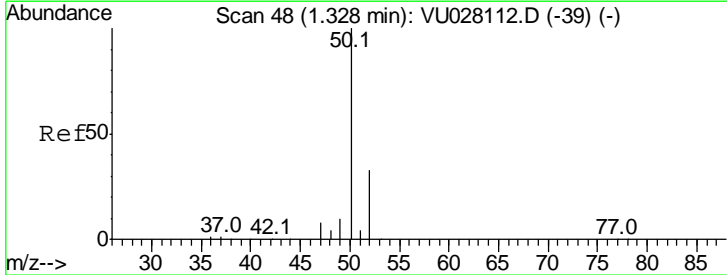
Instrument : MSVOA_U
 ClientSampled :

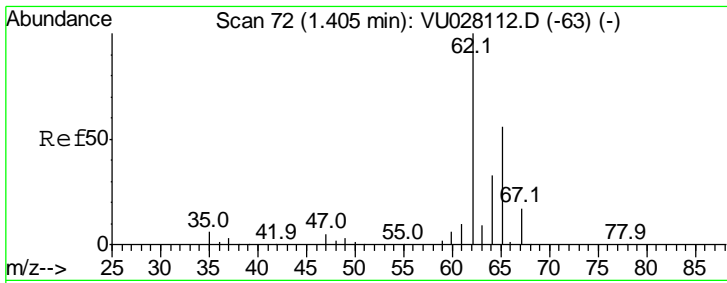
Tgt Ion	Resp	Lower	Upper
85	100		
87	31.6	25.6	38.4



#3
 Chloromethane
 Concen: 4.837 ug/L
 RT: 1.33 min Scan# 48
 Delta R.T. 0.00 min
 Lab File: VU028116.D
 Acq: 14 Nov 2018 12:35

Tgt Ion	Resp	Lower	Upper
50	100		
52	31.4	23.0	42.6

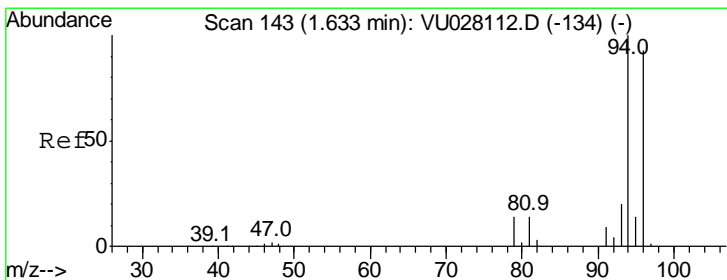
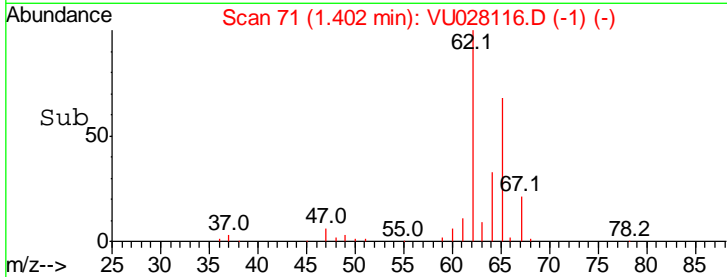
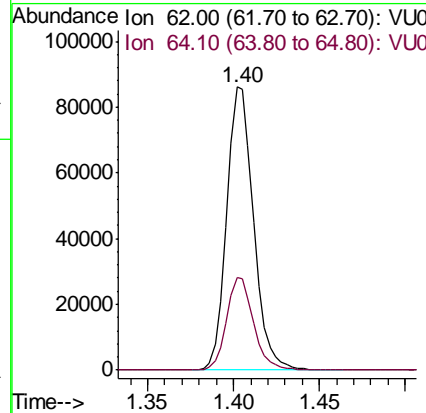
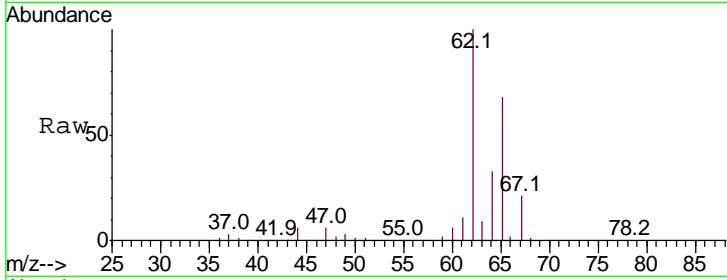




#5
 Vinyl chloride
 Concen: 4.923 ug/L
 RT: 1.40 min Scan# 71
 Delta R.T. -0.00 min
 Lab File: VU028116.D
 Acq: 14 Nov 2018 12:35

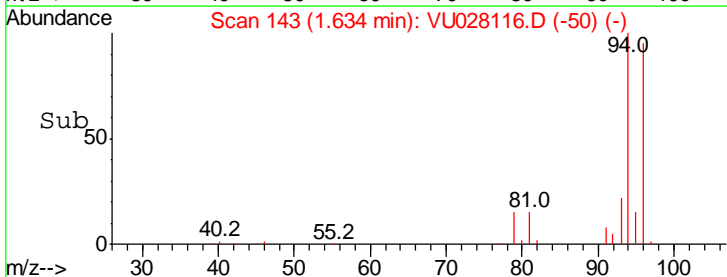
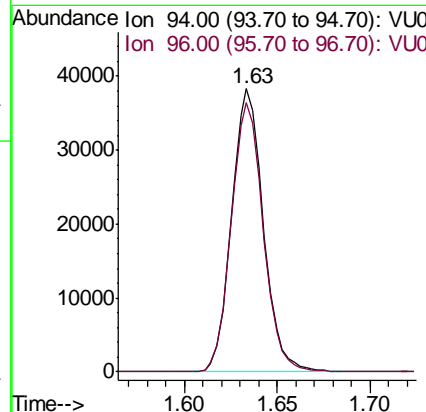
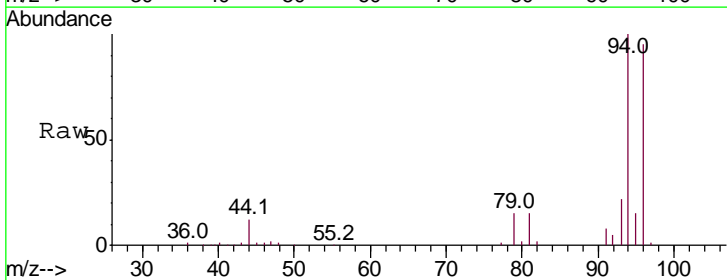
Instrument :
 MSVOA_U
 ClientSampled :

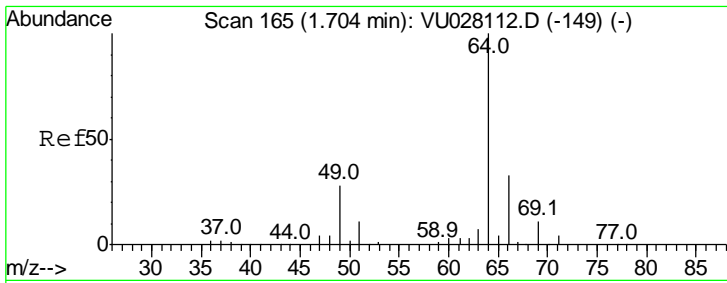
Tgt Ion	Resp	Lower	Upper
62	93503		
62	100		
64	32.9	22.7	42.3



#6
 Bromomethane
 Concen: 4.983 ug/L
 RT: 1.63 min Scan# 143
 Delta R.T. 0.00 min
 Lab File: VU028116.D
 Acq: 14 Nov 2018 12:35

Tgt Ion	Resp	Lower	Upper
94	45330		
94	100		
96	95.3	65.1	120.9

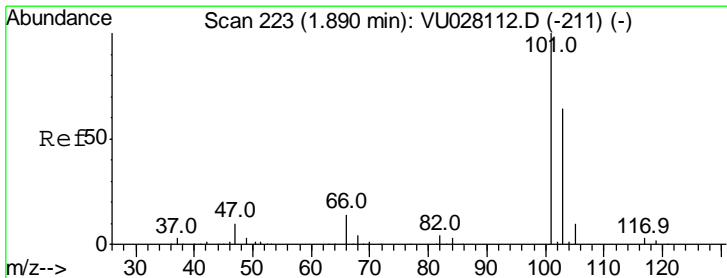
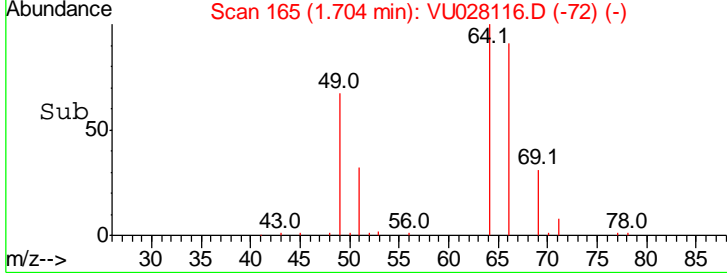
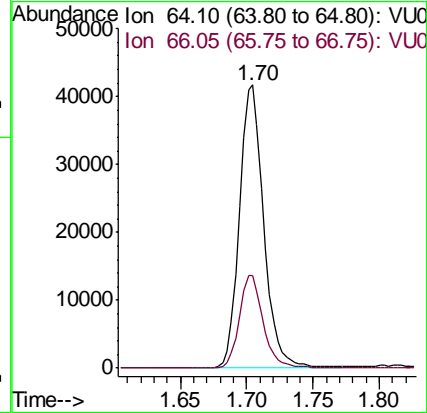
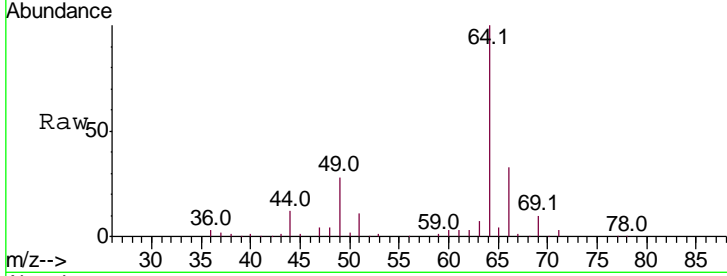




#8
 Chloroethane
 Concen: 4.657 ug/L
 RT: 1.70 min Scan# 165
 Delta R.T. 0.00 min
 Lab File: VU028116.D
 Acq: 14 Nov 2018 12:35

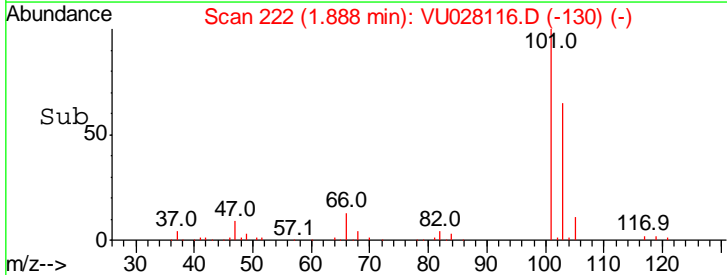
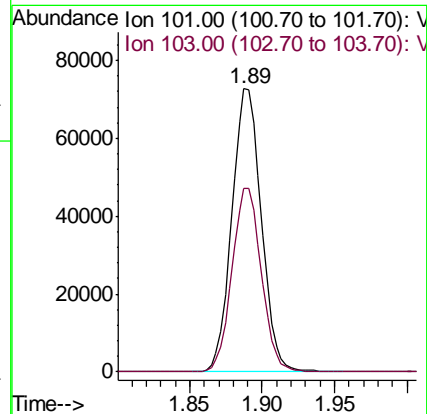
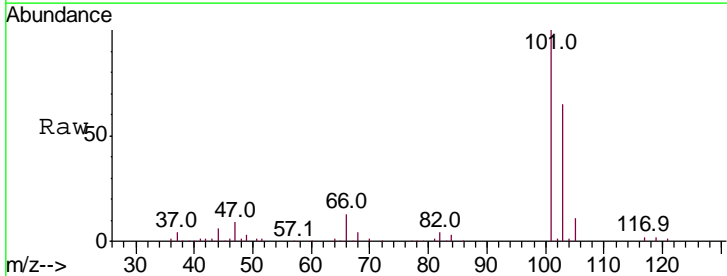
Instrument :
 MSVOA_U
 ClientSampled :

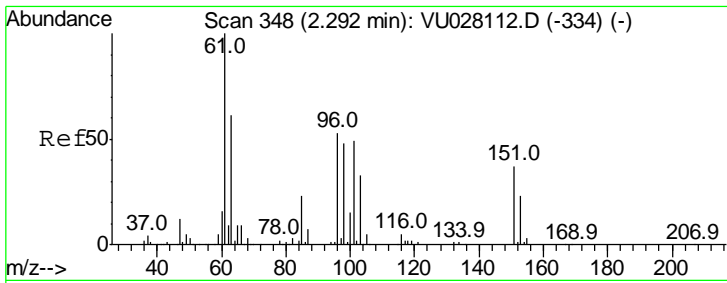
Tgt Ion	Resp	Lower	Upper
64	100		
66	32.8	23.1	42.9



#9
 Trichlorofluoromethane
 Concen: 4.926 ug/L
 RT: 1.89 min Scan# 222
 Delta R.T. -0.00 min
 Lab File: VU028116.D
 Acq: 14 Nov 2018 12:35

Tgt Ion	Resp	Lower	Upper
101	100		
103	64.9	51.2	76.8





#10

1,1,2-Trichloro-1,2,2-trifluoroethane

Concen: 4.947 ug/L

RT: 2.29 min Scan# 348

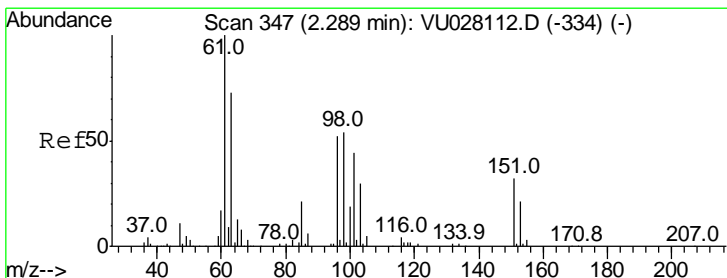
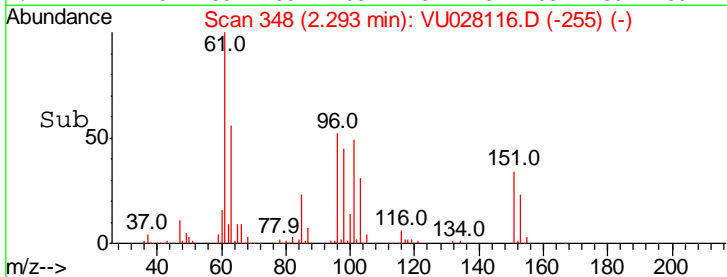
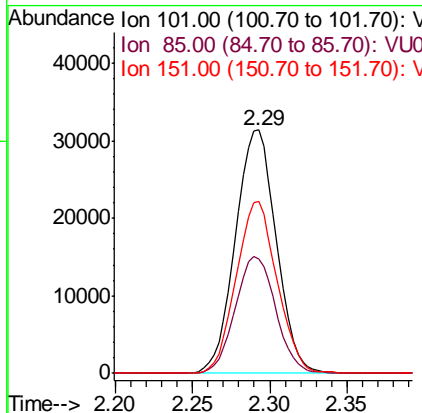
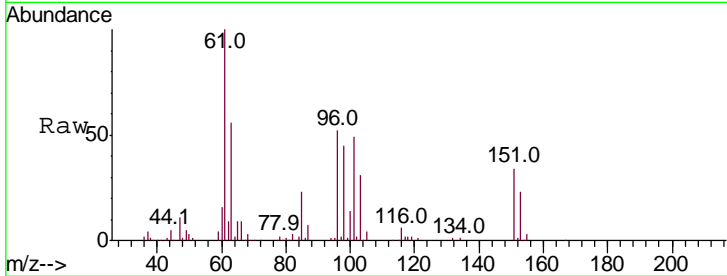
Delta R.T. 0.00 min

Lab File: VU028116.D

Acq: 14 Nov 2018 12:35

Instrument :
MSVOA_U
ClientSampled :

Tgt Ion	Resp	Lower	Upper
101	57538		
101	100		
85	47.5	37.6	56.4
151	70.6	58.2	87.2



#12

1,1-Dichloroethene

Concen: 4.782 ug/L

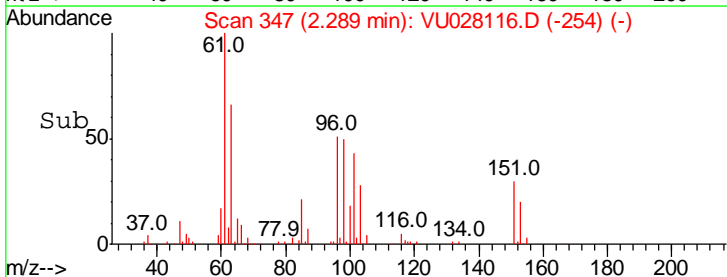
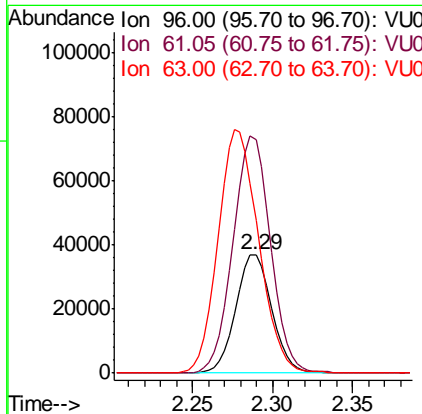
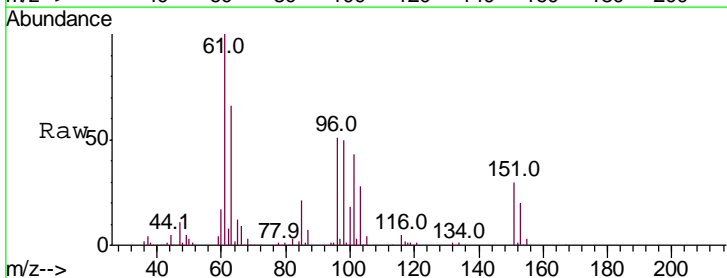
RT: 2.29 min Scan# 347

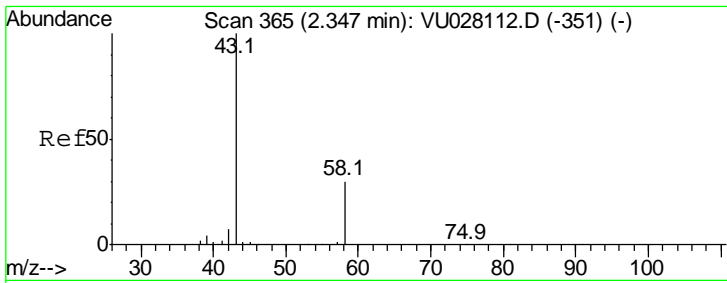
Delta R.T. 0.00 min

Lab File: VU028116.D

Acq: 14 Nov 2018 12:35

Tgt Ion	Resp	Lower	Upper
96	56382		
96	100		
61	196.8	134.8	250.3
63	129.2	100.1	185.9

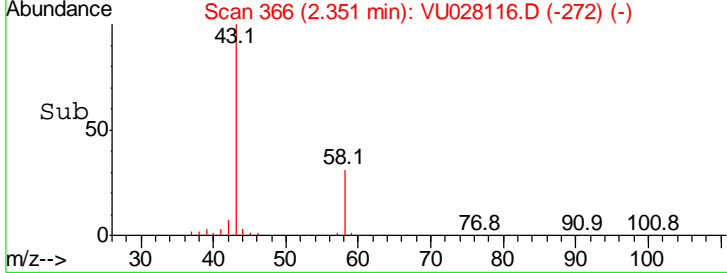
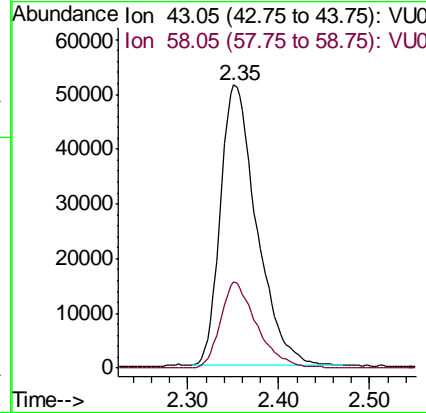
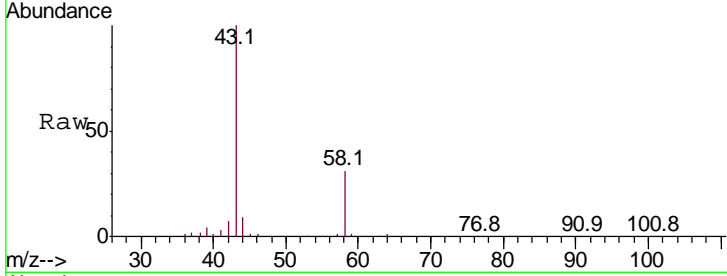




#13
 Acetone
 Concen: 49.316 ug/L
 RT: 2.35 min Scan# 366
 Delta R.T. 0.00 min
 Lab File: VU028116.D
 Acq: 14 Nov 2018 12:35

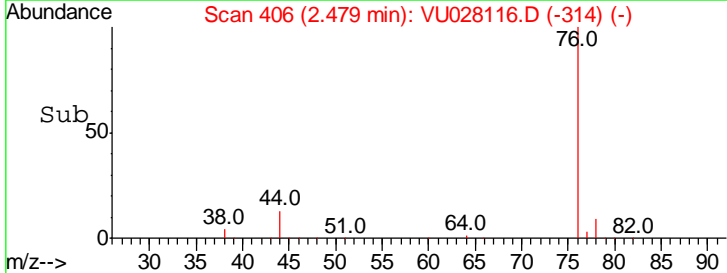
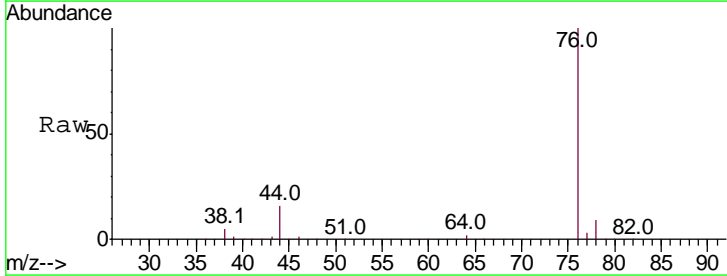
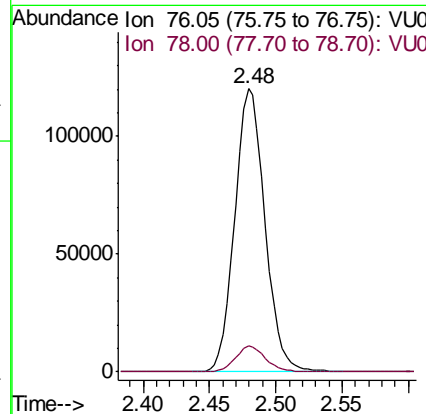
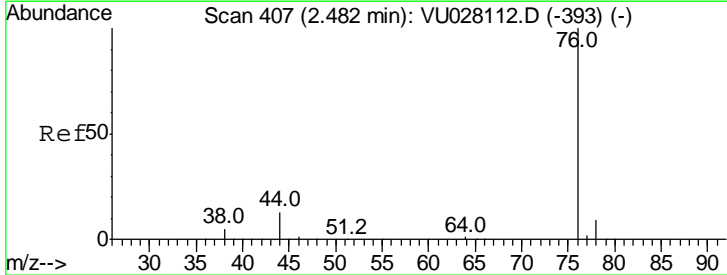
Instrument :
 MSVOA_U
 ClientSampled :

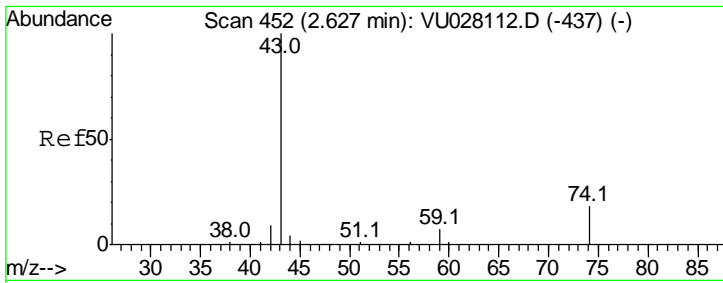
Tgt Ion	Ratio	Lower	Upper
43	100		
58	30.9	0.0	61.6



#14
 Carbon disulfide
 Concen: 4.812 ug/L
 RT: 2.48 min Scan# 406
 Delta R.T. -0.00 min
 Lab File: VU028116.D
 Acq: 14 Nov 2018 12:35

Tgt Ion	Ratio	Lower	Upper
76	100		
78	9.2	7.0	10.4

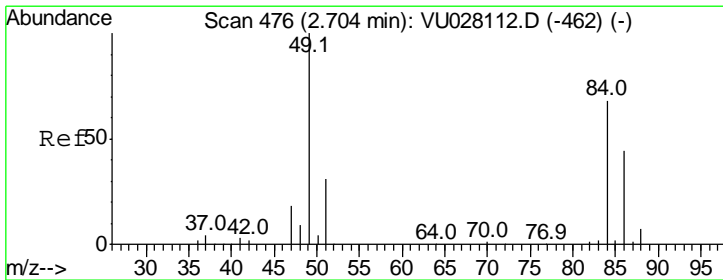
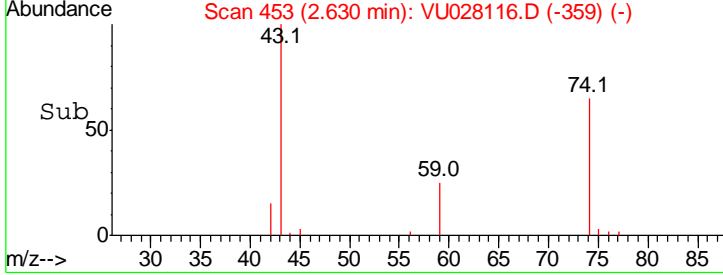
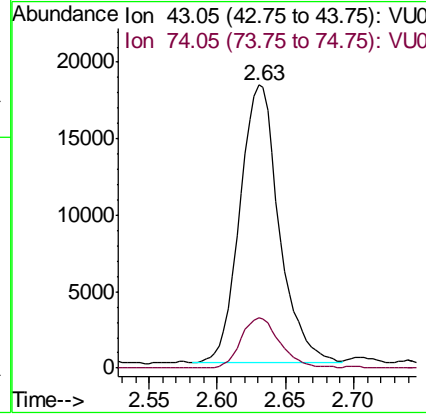
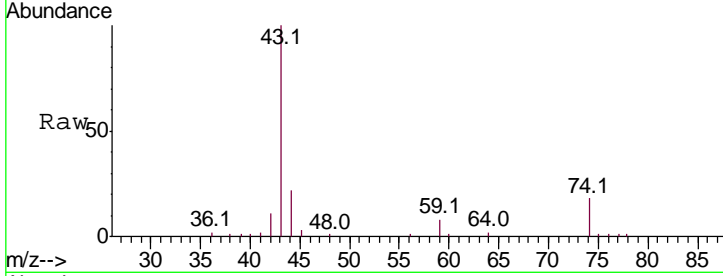




#15
 Methyl Acetate
 Concen: 4.735 ug/L
 RT: 2.63 min Scan# 453
 Delta R.T. 0.00 min
 Lab File: VU028116.D
 Acq: 14 Nov 2018 12:35

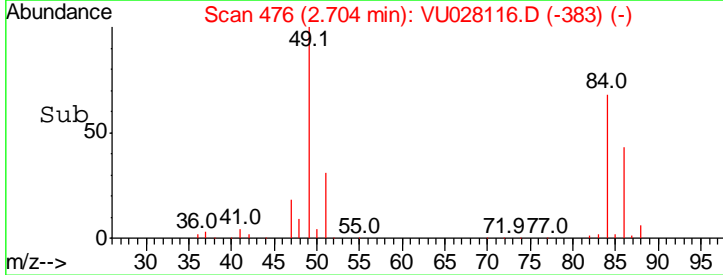
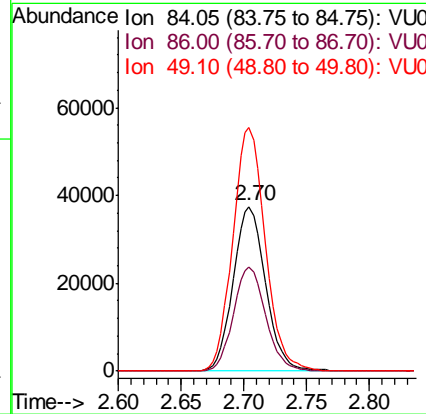
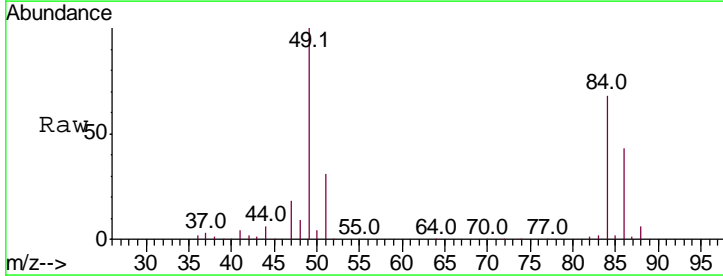
Instrument :
 MSVOA_U
 ClientSampled :

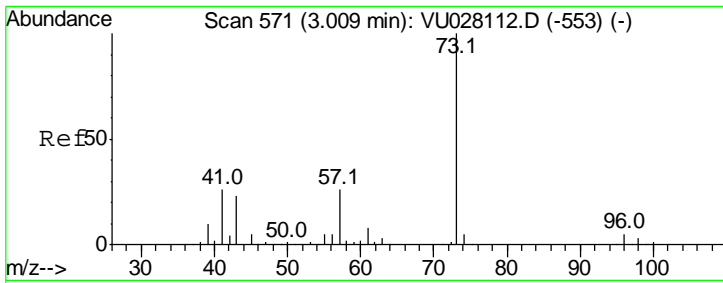
Tgt Ion	Resp	Lower	Upper
43	36390		
43	100		
74	18.2	14.9	22.3



#16
 Methylene chloride
 Concen: 4.831 ug/L
 RT: 2.70 min Scan# 476
 Delta R.T. 0.00 min
 Lab File: VU028116.D
 Acq: 14 Nov 2018 12:35

Tgt Ion	Resp	Lower	Upper
84	67286		
84	100		
86	63.3	44.6	82.8
49	148.0	102.5	190.3

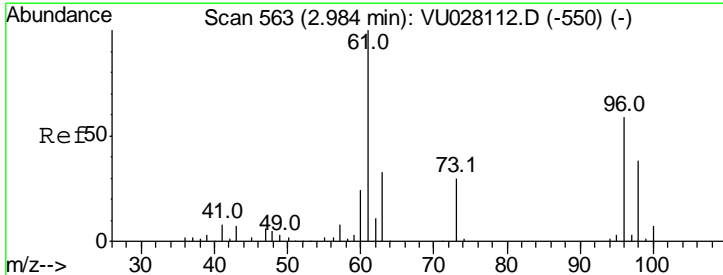
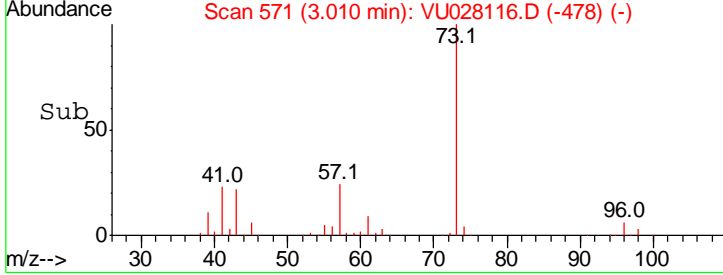
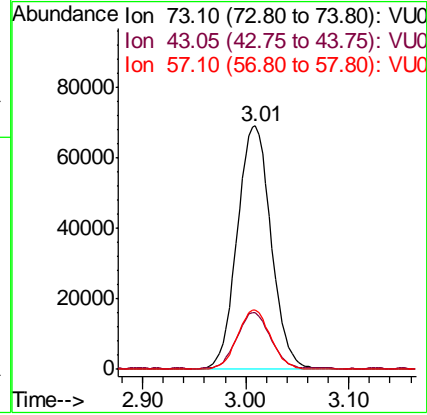
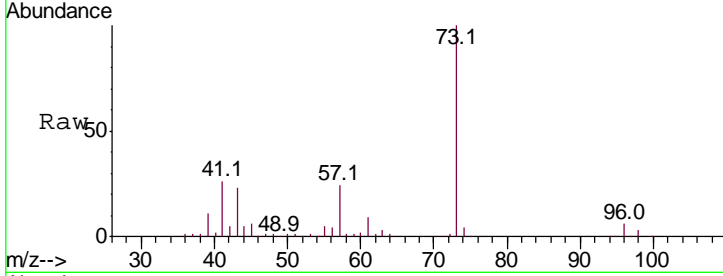




#17
 Methyl tert-butyl Ether
 Concen: 4.793 ug/L
 RT: 3.01 min Scan# 571
 Delta R.T. 0.00 min
 Lab File: VU028116.D
 Acq: 14 Nov 2018 12:35

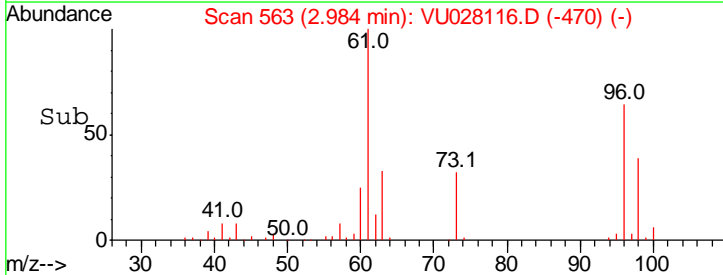
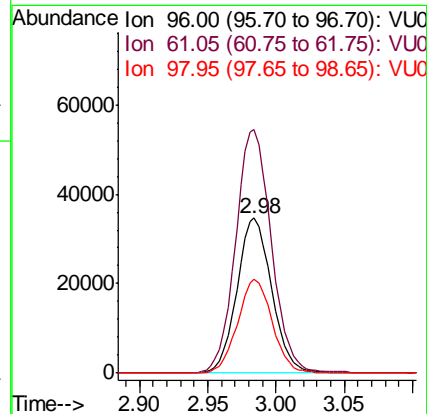
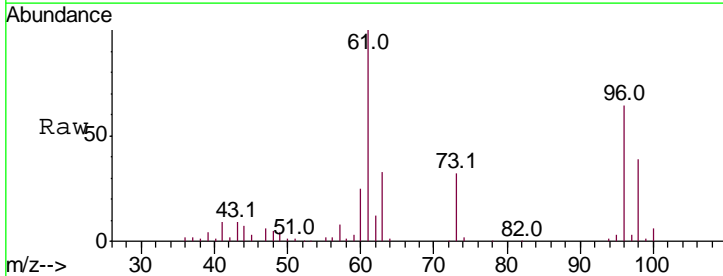
Instrument :
 MSVOA_U
 ClientSampled :

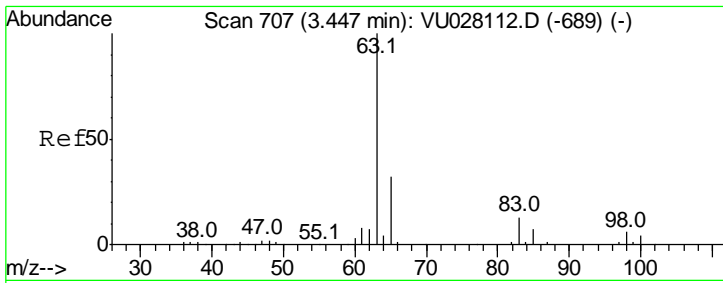
Tgt Ion	Resp	Lower	Upper
73	157976		
Ion Ratio			
73	100		
43	22.9	18.1	27.1
57	24.0	20.0	30.0



#18
 trans-1,2-Dichloroethene
 Concen: 4.894 ug/L
 RT: 2.98 min Scan# 563
 Delta R.T. 0.00 min
 Lab File: VU028116.D
 Acq: 14 Nov 2018 12:35

Tgt Ion	Resp	Lower	Upper
96	61342		
Ion Ratio			
96	100		
61	157.1	118.5	220.1
98	60.6	44.9	83.5

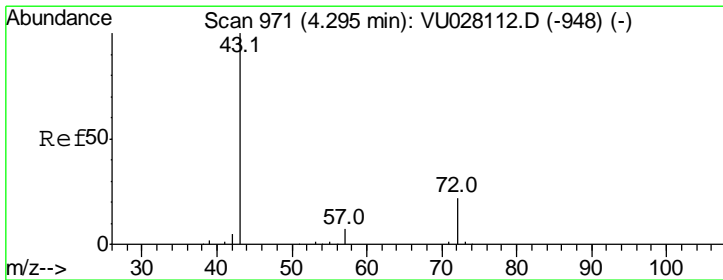
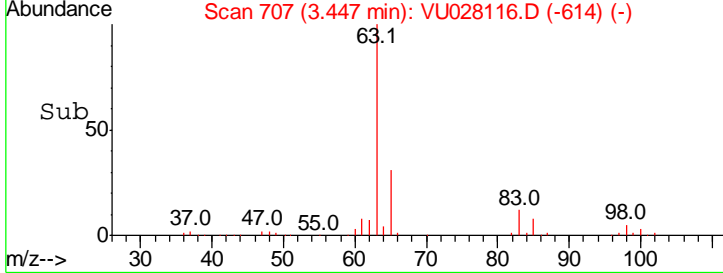
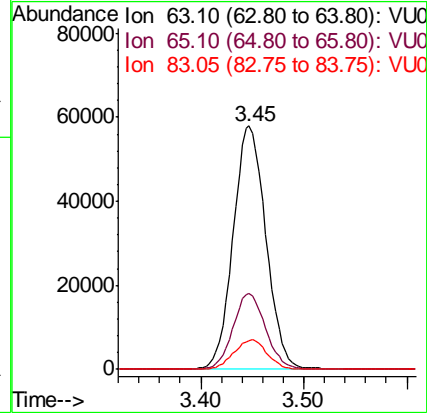
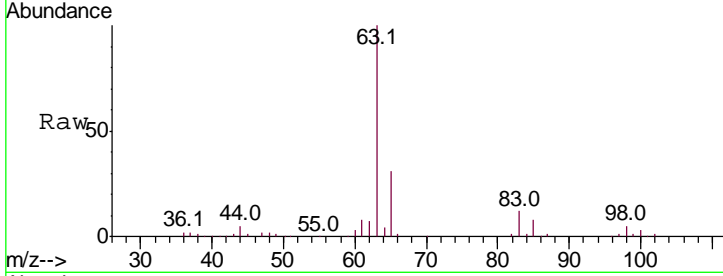




#19
 1,1-Dichloroethane
 Concen: 4.867 ug/L
 RT: 3.45 min Scan# 707
 Delta R.T. 0.00 min
 Lab File: VU028116.D
 Acq: 14 Nov 2018 12:35

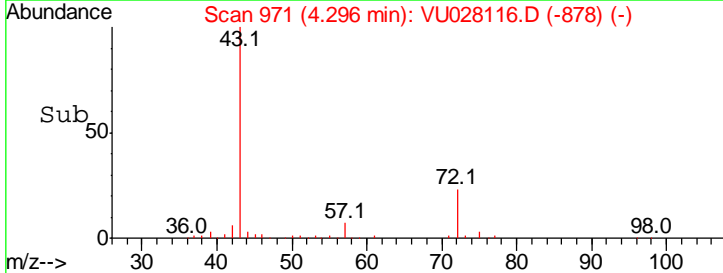
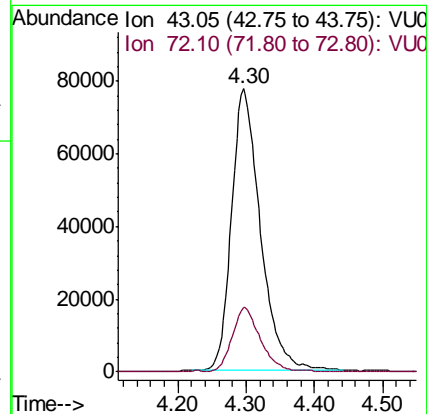
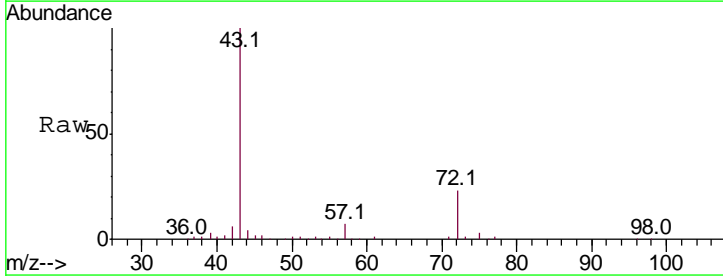
Instrument : MSVOA_U
 ClientSampled :

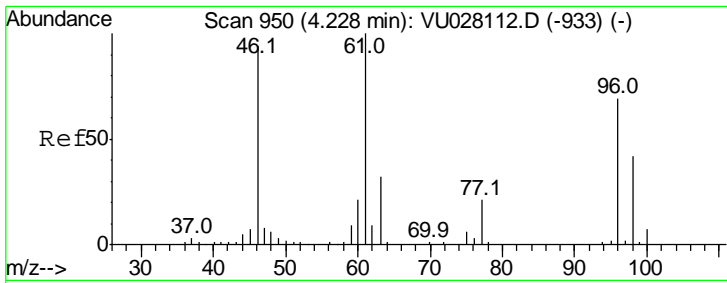
Tgt Ion	Resp	Lower	Upper
63	100		
65	31.0	22.2	41.2
83	11.7	8.9	16.5



#21
 2-Butanone
 Concen: 50.281 ug/L
 RT: 4.30 min Scan# 971
 Delta R.T. 0.00 min
 Lab File: VU028116.D
 Acq: 14 Nov 2018 12:35

Tgt Ion	Resp	Lower	Upper
43	100		
72	21.8	11.0	33.0

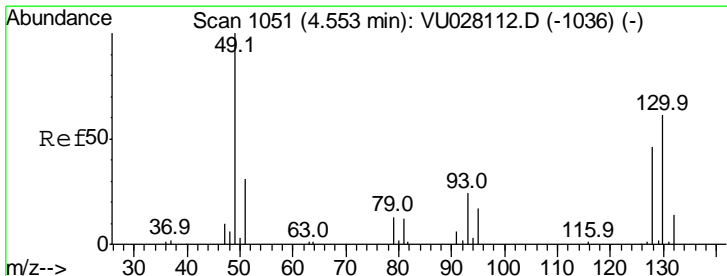
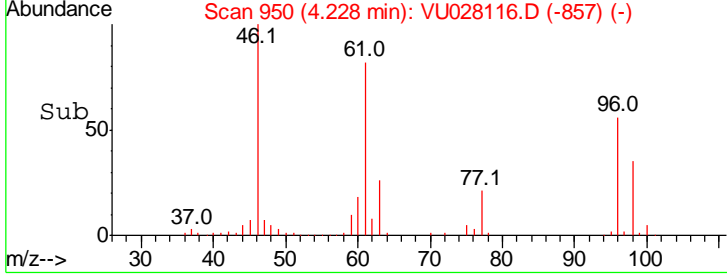
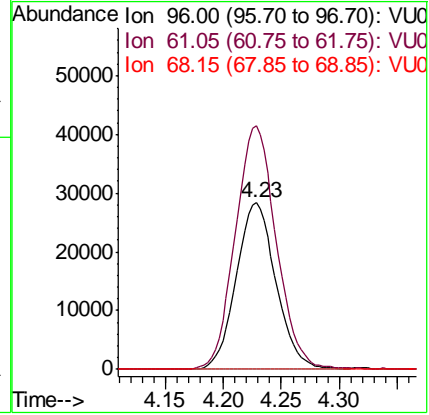
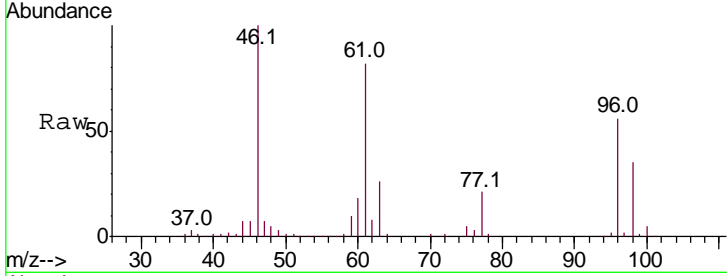




#22
 cis-1,2-Dichloroethene
 Concen: 4.859 ug/L
 RT: 4.23 min Scan# 950
 Delta R.T. 0.00 min
 Lab File: VU028116.D
 Acq: 14 Nov 2018 12:35

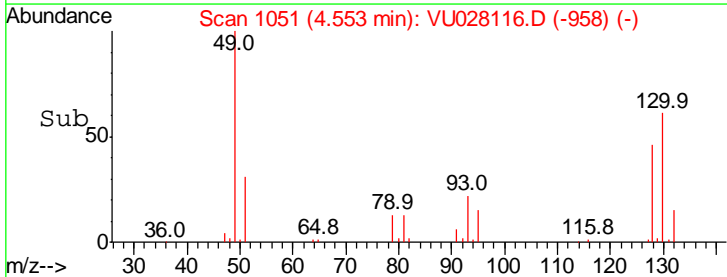
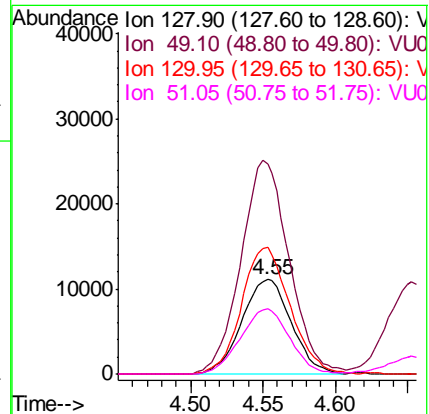
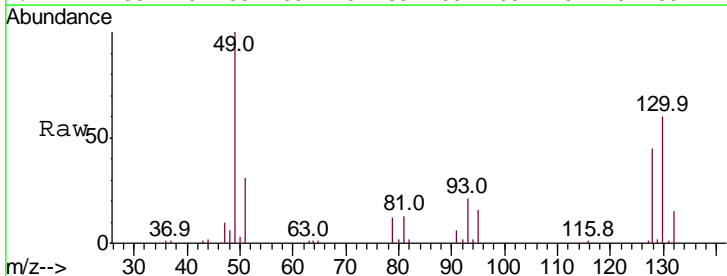
Instrument :
 MSVOA_U
 ClientSampled :

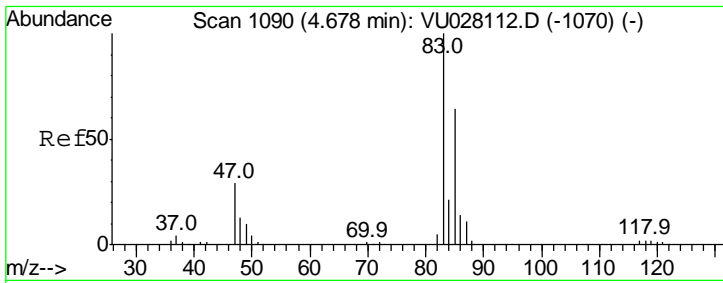
Tgt Ion	Resp	Lower	Upper
96	67149		
61	146.2	101.8	189.0
68	0.0	0.0	0.0



#23
 Bromochloromethane
 Concen: 4.812 ug/L
 RT: 4.55 min Scan# 1051
 Delta R.T. 0.00 min
 Lab File: VU028116.D
 Acq: 14 Nov 2018 12:35

Tgt Ion	Resp	Lower	Upper
128	26278		
49	222.4	152.2	282.6
130	133.6	93.2	173.0
51	68.6	53.5	80.3

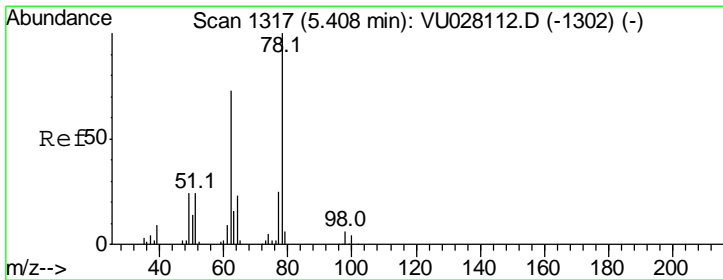
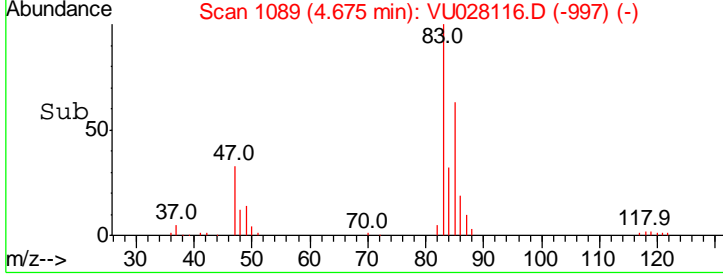
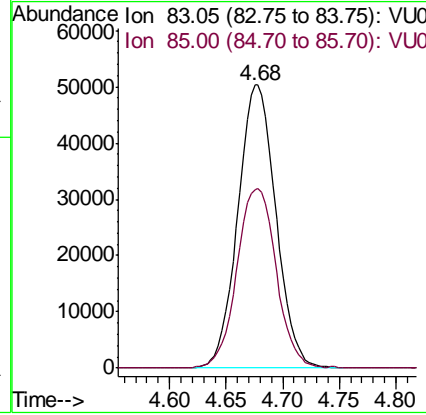
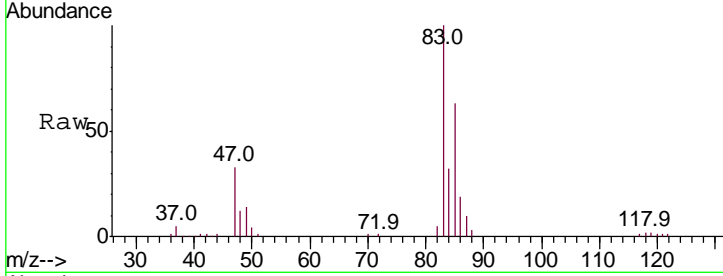




#25
 Chloroform
 Concen: 4.978 ug/L
 RT: 4.68 min Scan# 1089
 Delta R.T. -0.00 min
 Lab File: VU028116.D
 Acq: 14 Nov 2018 12:35

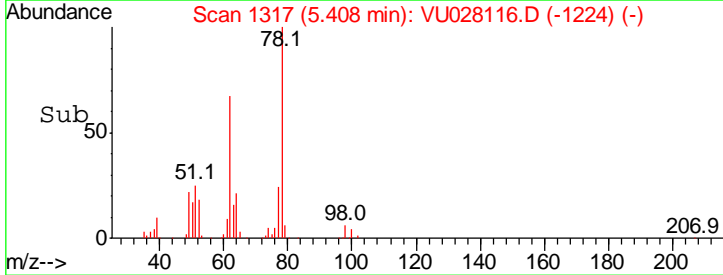
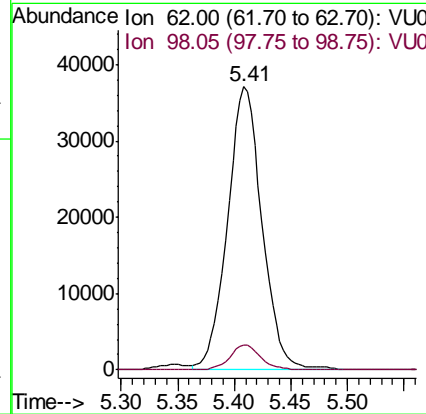
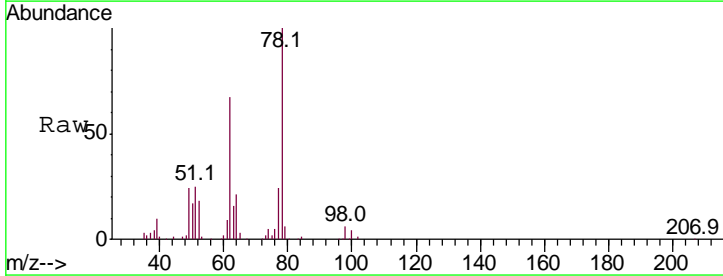
Instrument :
 MSVOA_U
 ClientSampled :

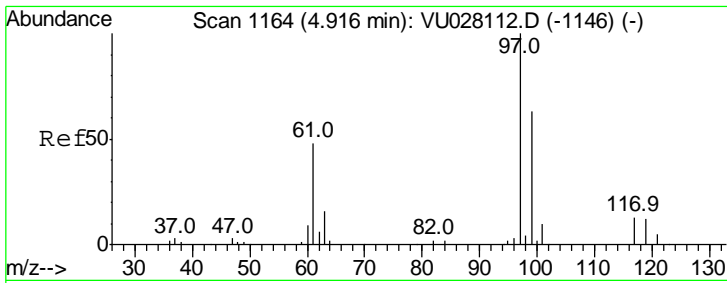
Tgt Ion	Resp	Lower	Upper
83	100		
85	63.2	45.0	83.6



#27
 1,2-Dichloroethane
 Concen: 5.061 ug/L
 RT: 5.41 min Scan# 1317
 Delta R.T. 0.00 min
 Lab File: VU028116.D
 Acq: 14 Nov 2018 12:35

Tgt Ion	Resp	Lower	Upper
62	100		
98	8.9	7.0	10.4

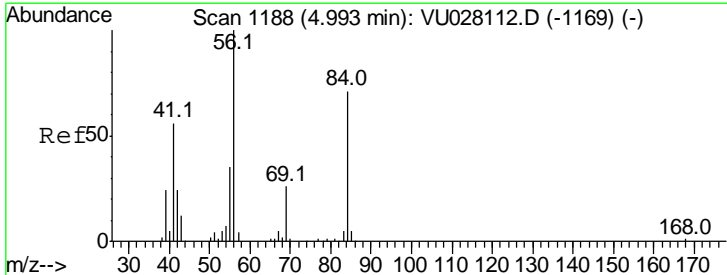
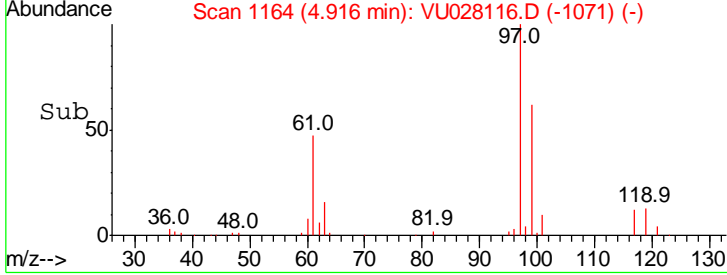
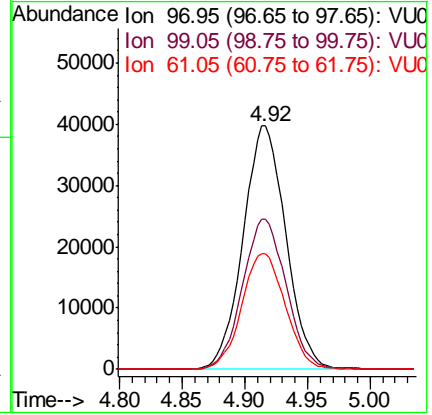
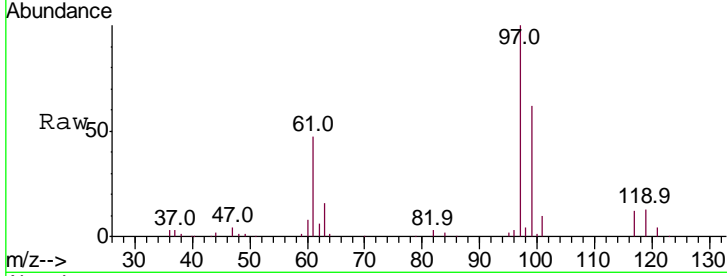




#29
 1,1,1-Trichloroethane
 Concen: 5.035 ug/L
 RT: 4.92 min Scan# 1164
 Delta R.T. 0.00 min
 Lab File: VU028116.D
 Acq: 14 Nov 2018 12:35

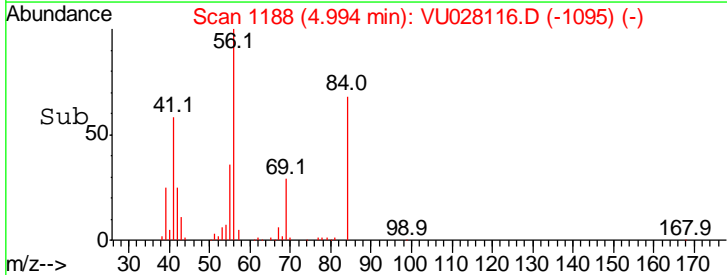
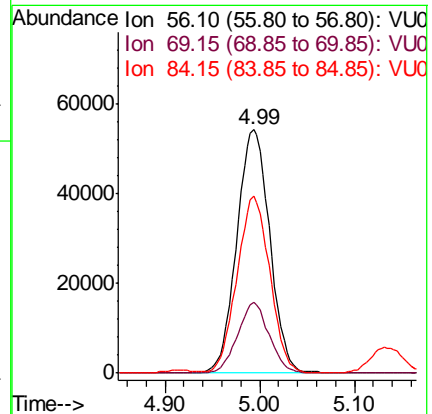
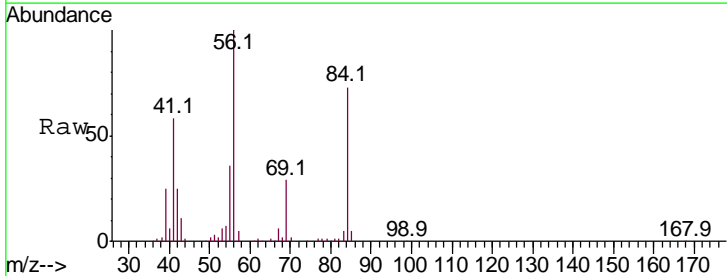
Instrument :
 MSVOA_U
 ClientSampled :

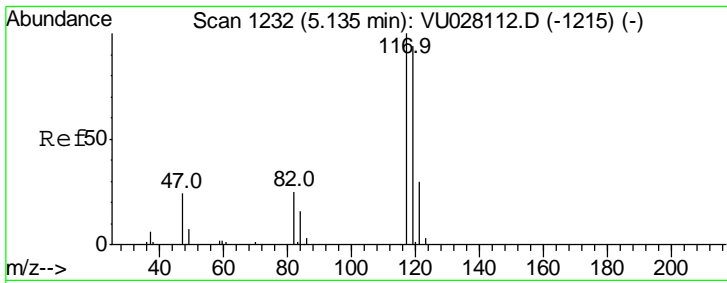
Tgt Ion	Resp	Lower	Upper
97	100		
99	62.7	51.2	76.8
61	48.4	39.4	59.2



#30
 Cyclohexane
 Concen: 5.003 ug/L
 RT: 4.99 min Scan# 1188
 Delta R.T. 0.00 min
 Lab File: VU028116.D
 Acq: 14 Nov 2018 12:35

Tgt Ion	Resp	Lower	Upper
56	100		
69	27.7	22.6	33.8
84	71.8	57.7	86.5

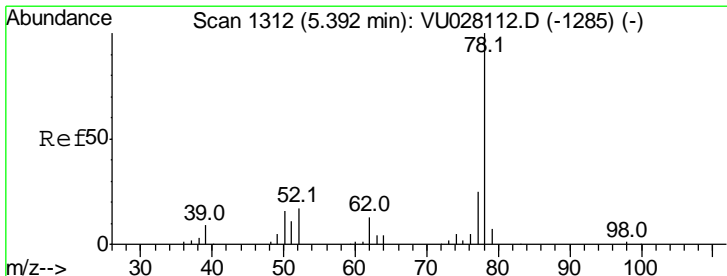
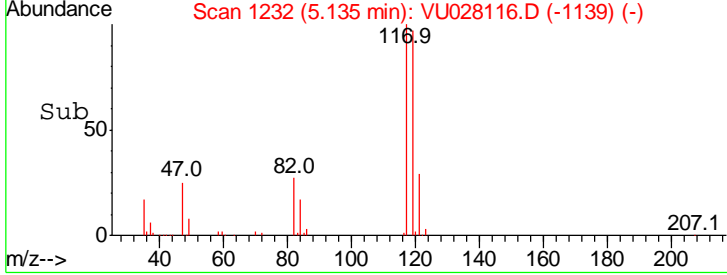
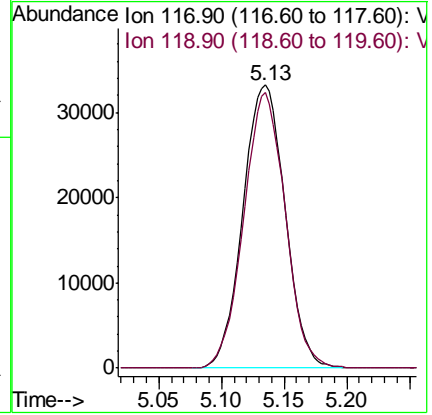
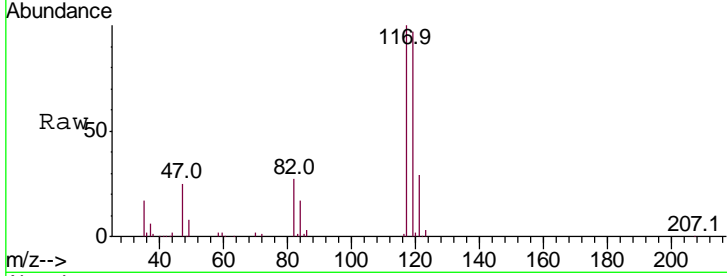




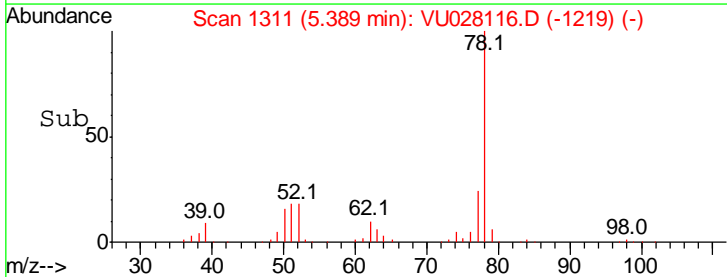
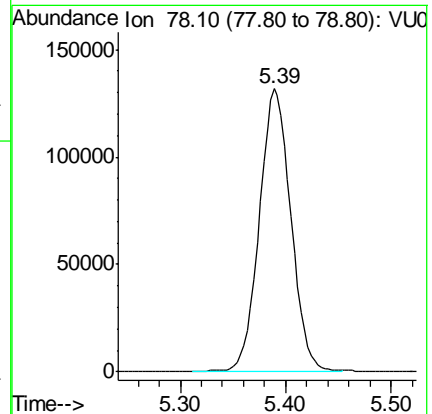
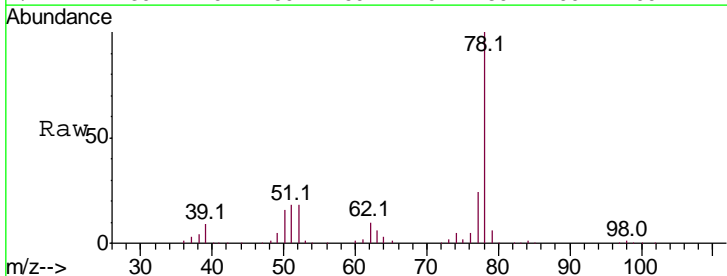
#31
 Carbon tetrachloride
 Concen: 5.009 ug/L
 RT: 5.13 min Scan# 1232
 Delta R.T. 0.00 min
 Lab File: VU028116.D
 Acq: 14 Nov 2018 12:35

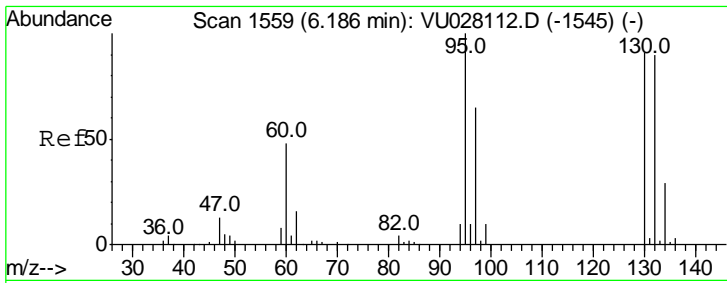
Instrument :
 MSVOA_U
 ClientSampled :

Tgt Ion: 117 Resp: 77798
 Ion Ratio Lower Upper
 117 100
 119 95.6 75.7 113.5



#33
 Benzene
 Concen: 4.943 ug/L
 RT: 5.39 min Scan# 1311
 Delta R.T. -0.00 min
 Lab File: VU028116.D
 Acq: 14 Nov 2018 12:35
 Tgt Ion: 78 Resp: 275328

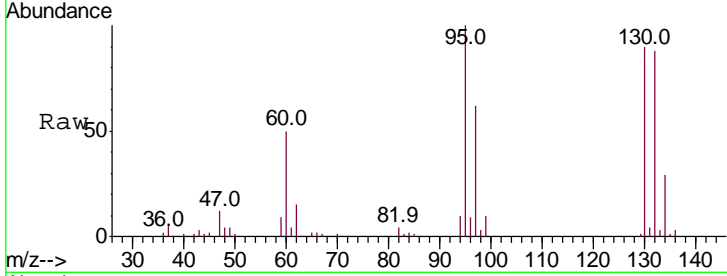




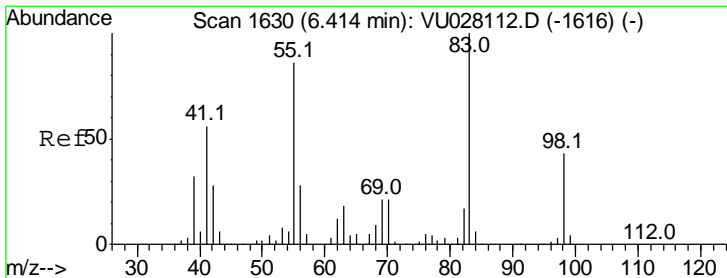
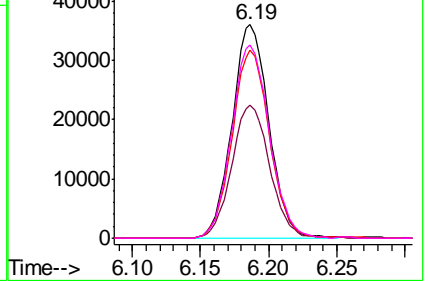
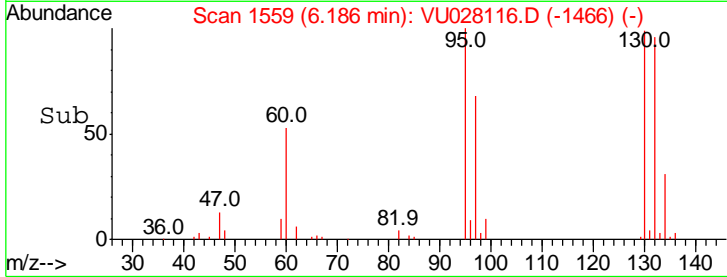
#34
 Trichloroethene
 Concen: 4.915 ug/L
 RT: 6.19 min Scan# 1559
 Delta R.T. 0.00 min
 Lab File: VU028116.D
 Acq: 14 Nov 2018 12:35

Instrument :
 MSVOA_U
 ClientSampled :

Tgt Ion	Resp	Lower	Upper
95	67664		
95	100		
97	62.0	45.3	84.1
132	87.8	63.0	117.0
130	90.4	63.6	118.2

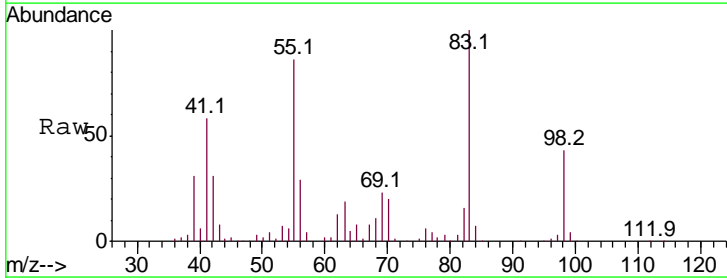


Abundance Ion 95.00 (94.70 to 95.70): VUC
 Ion 96.95 (96.65 to 97.65): VUC
 Ion 131.95 (131.65 to 132.65): VUC
 Ion 129.95 (129.65 to 130.65): VUC

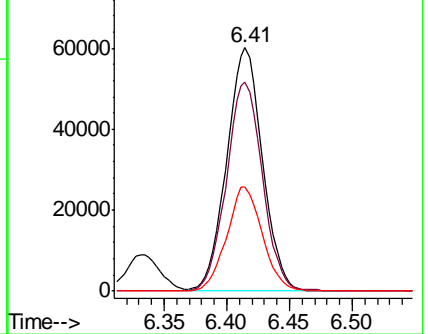
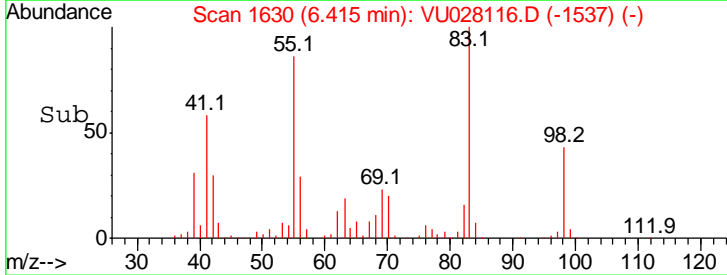


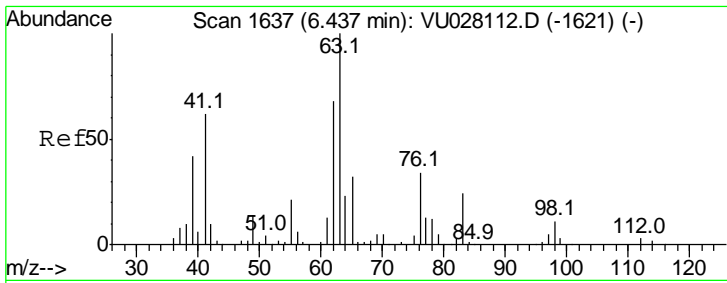
#35
 Methylcyclohexane
 Concen: 5.031 ug/L
 RT: 6.41 min Scan# 1630
 Delta R.T. 0.00 min
 Lab File: VU028116.D
 Acq: 14 Nov 2018 12:35

Tgt Ion	Resp	Lower	Upper
83	119058		
83	100		
55	86.5	69.0	103.4
98	42.6	33.3	49.9



Abundance Ion 83.15 (82.85 to 83.85): VUC
 Ion 55.10 (54.80 to 55.80): VUC
 Ion 98.15 (97.85 to 98.85): VUC

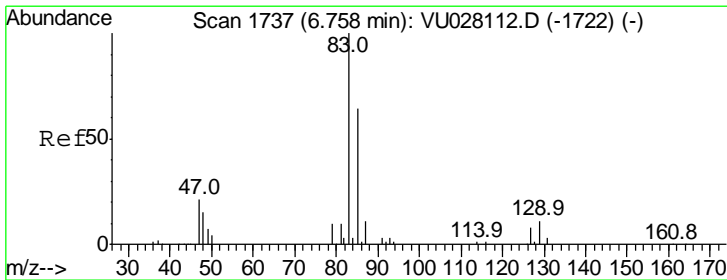
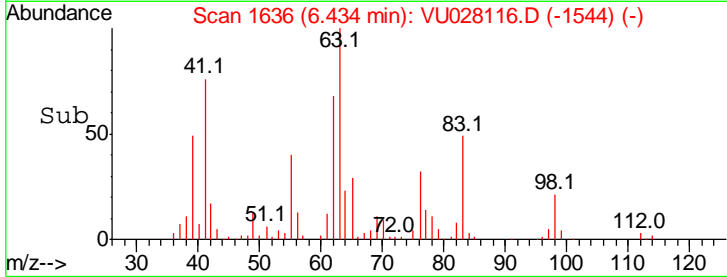
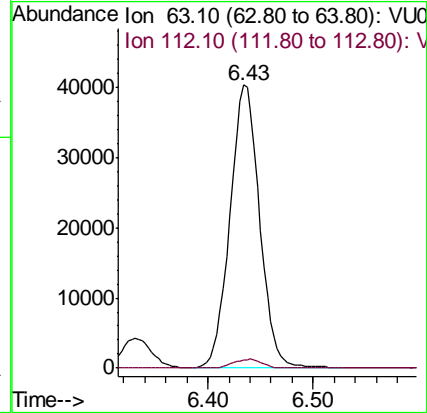
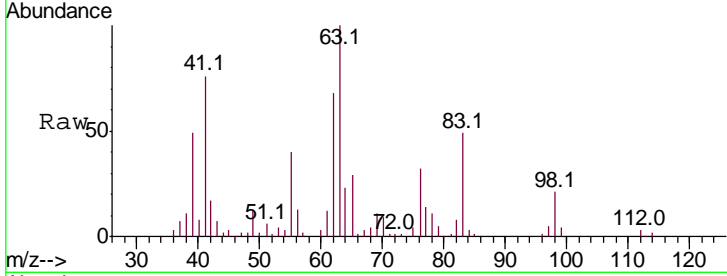




#37
 1,2-Dichloropropane
 Concen: 5.094 ug/L
 RT: 6.43 min Scan# 1636
 Delta R.T. -0.00 min
 Lab File: VU028116.D
 Acq: 14 Nov 2018 12:35

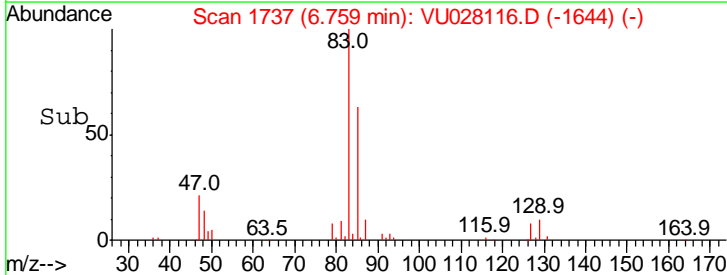
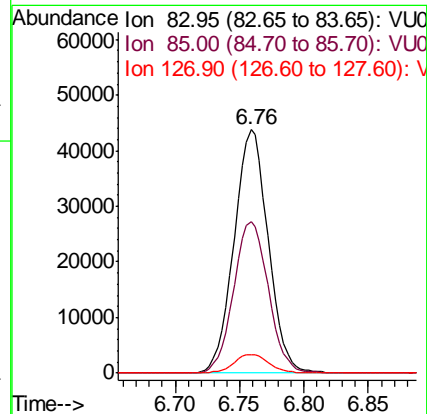
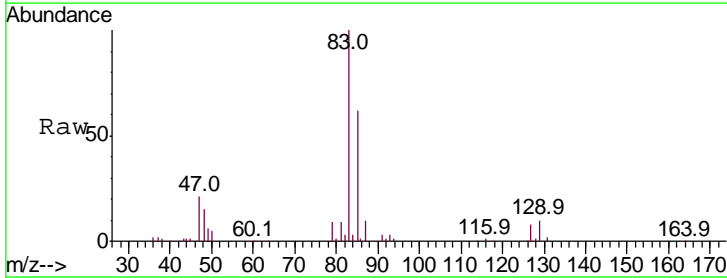
Instrument :
 MSVOA_U
 ClientSampled :

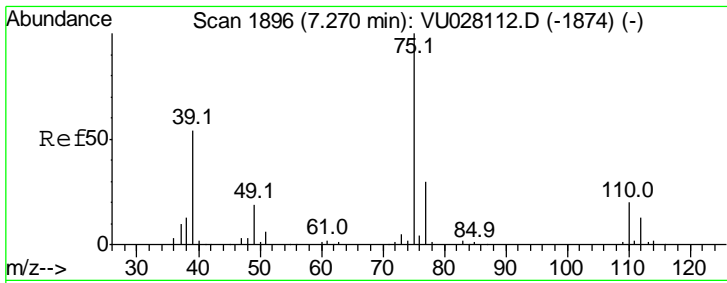
Tgt Ion	Resp	Lower	Upper
63	100		
112	3.0	2.2	3.4



#38
 Bromodichloromethane
 Concen: 4.916 ug/L
 RT: 6.76 min Scan# 1737
 Delta R.T. 0.00 min
 Lab File: VU028116.D
 Acq: 14 Nov 2018 12:35

Tgt Ion	Resp	Lower	Upper
83	100		
85	62.2	44.5	82.7
127	7.8	6.8	10.2

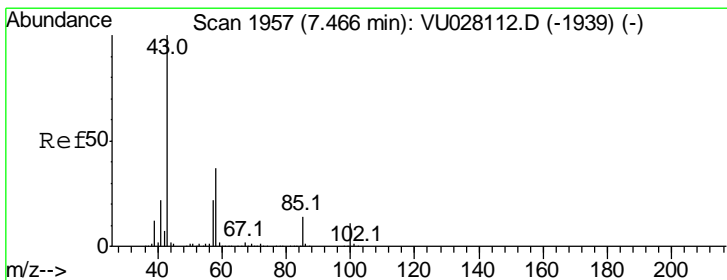
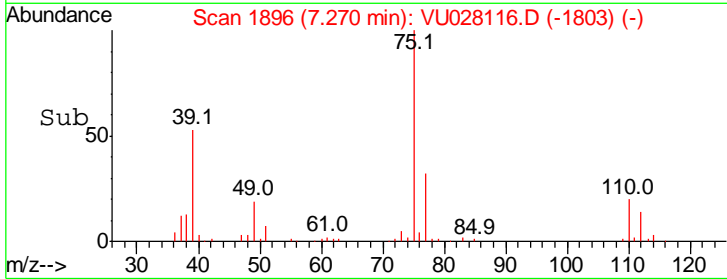
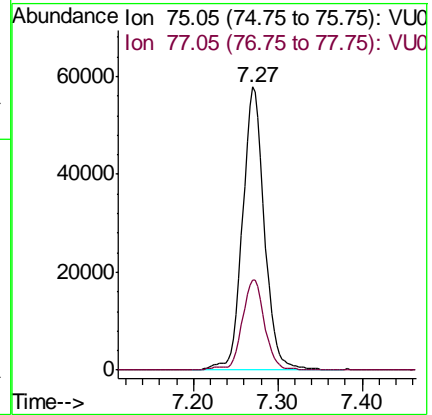
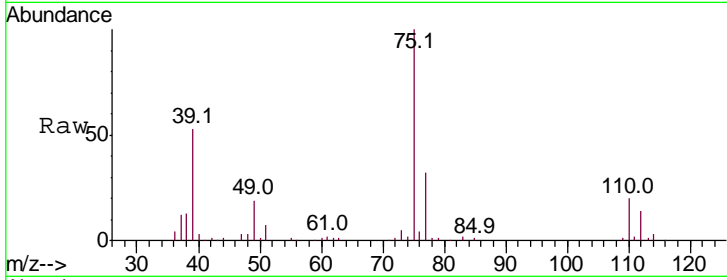




#39
 cis-1,3-Dichloropropene
 Concen: 5.048 ug/L
 RT: 7.27 min Scan# 1896
 Delta R.T. 0.00 min
 Lab File: VU028116.D
 Acq: 14 Nov 2018 12:35

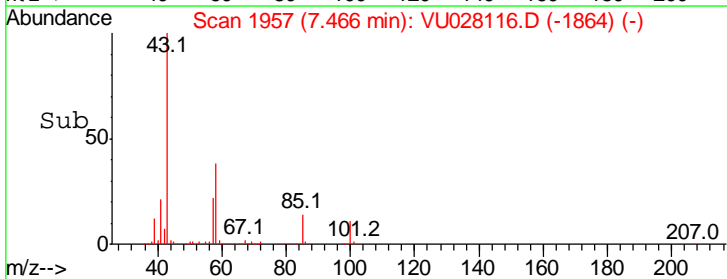
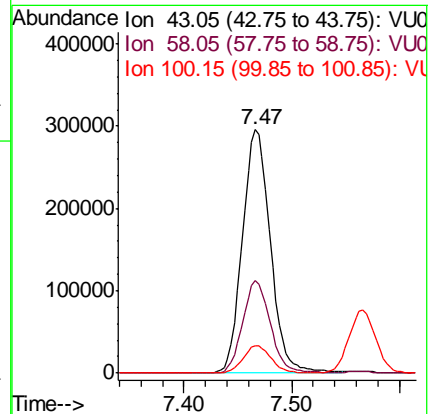
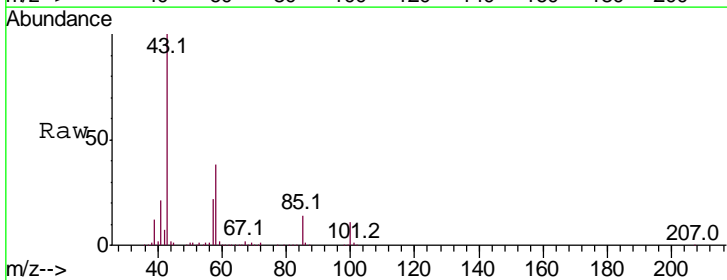
Instrument : MSVOA_U
 ClientSampled :

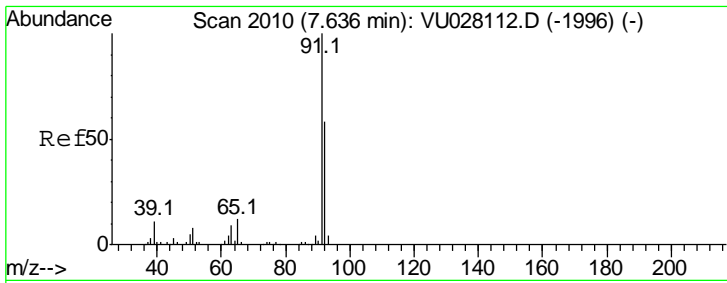
Tgt Ion	Resp	Lower	Upper
75	105136		
75	100		
77	31.9	20.9	38.9



#40
 4-Methyl-2-pentanone
 Concen: 50.167 ug/L
 RT: 7.47 min Scan# 1957
 Delta R.T. 0.00 min
 Lab File: VU028116.D
 Acq: 14 Nov 2018 12:35

Tgt Ion	Resp	Lower	Upper
43	532146		
43	100		
58	37.6	29.9	44.9
100	11.3	9.1	13.7

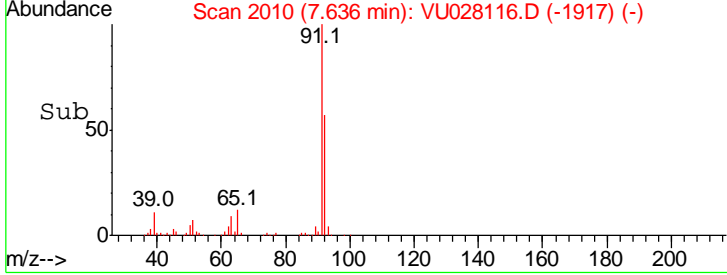
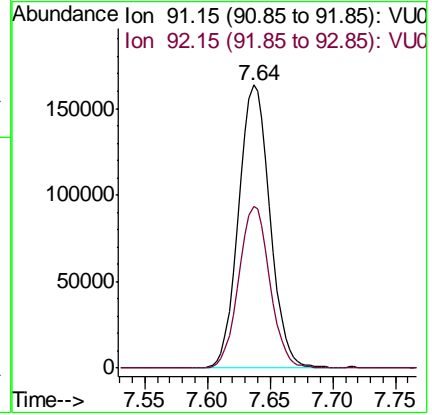
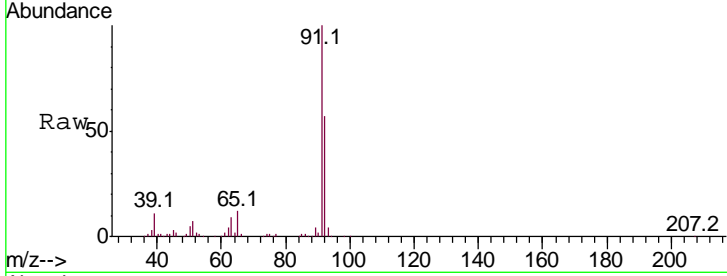




#42
 Toluene
 Concen: 4.958 ug/L
 RT: 7.64 min Scan# 2010
 Delta R.T. 0.00 min
 Lab File: VU028116.D
 Acq: 14 Nov 2018 12:35

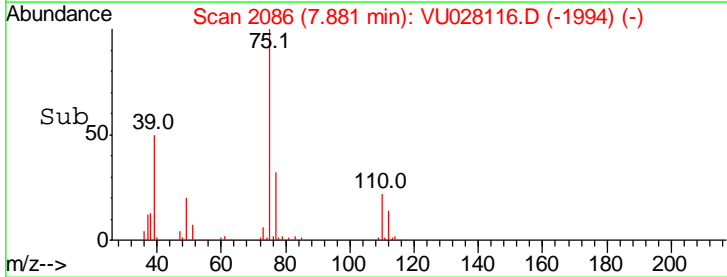
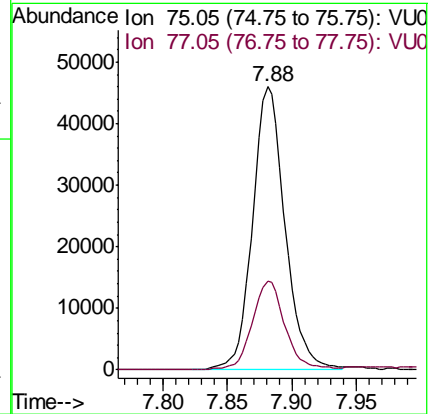
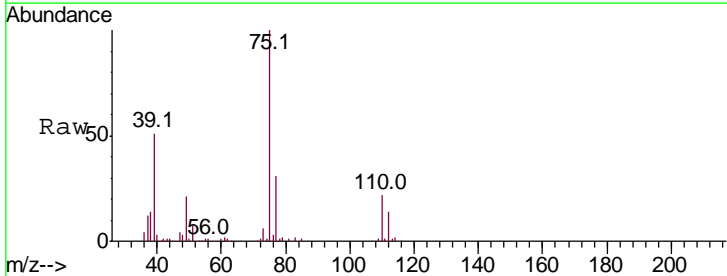
Instrument : MSVOA_U
 ClientSampled :

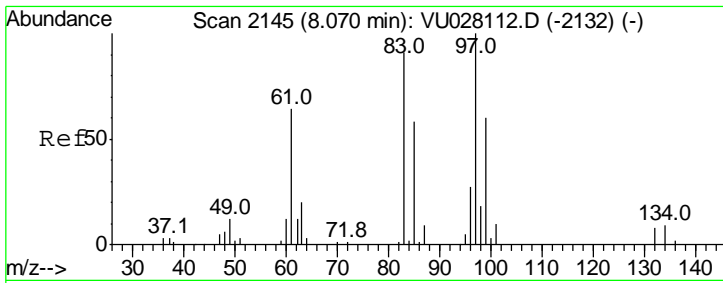
Tgt Ion	Resp	Lower	Upper
91	100		
92	57.3	40.7	75.7



#44
 trans-1,3-Dichloropropene
 Concen: 4.947 ug/L
 RT: 7.88 min Scan# 2086
 Delta R.T. -0.00 min
 Lab File: VU028116.D
 Acq: 14 Nov 2018 12:35

Tgt Ion	Resp	Lower	Upper
75	100		
77	31.5	22.5	41.7

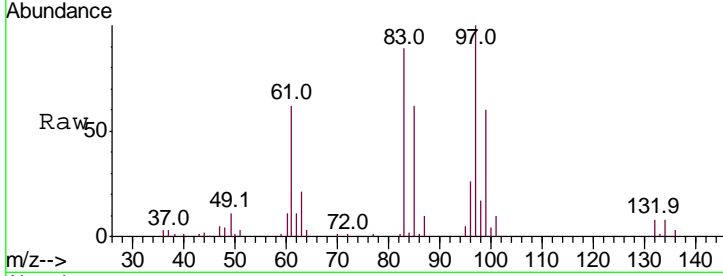




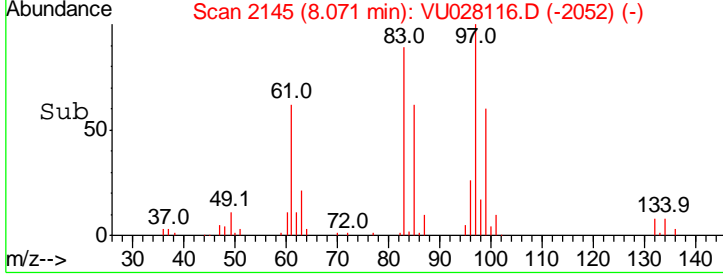
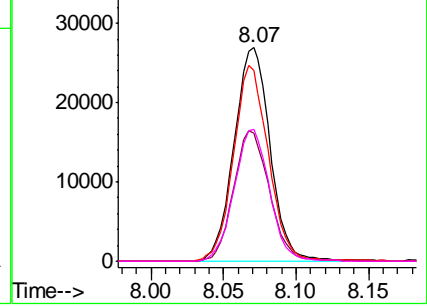
#45
 1,1,2-Trichloroethane
 Concen: 4.984 ug/L
 RT: 8.07 min Scan# 2145
 Delta R.T. 0.00 min
 Lab File: VU028116.D
 Acq: 14 Nov 2018 12:35

Instrument :
 MSVOA_U
 ClientSampled :

Tgt Ion	Resp	Lower	Upper
97	100		
99	60.0	42.1	78.1
83	89.2	63.7	118.3
85	61.7	40.6	75.4

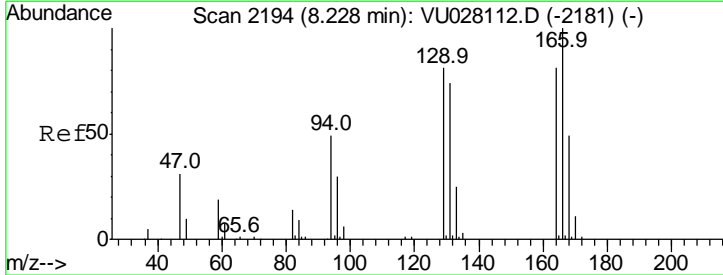


Abundance
 Ion 96.95 (96.65 to 97.65): VU0
 Ion 99.05 (98.75 to 99.75): VU0
 Ion 82.95 (82.65 to 83.65): VU0
 Ion 85.00 (84.70 to 85.70): VU0

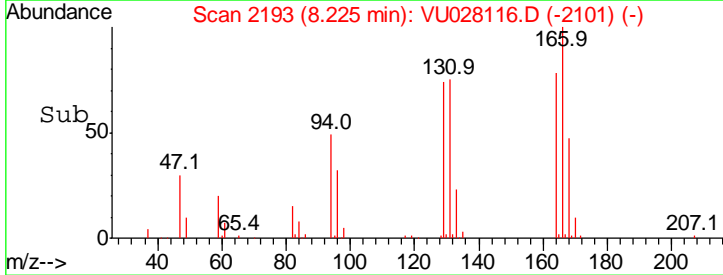
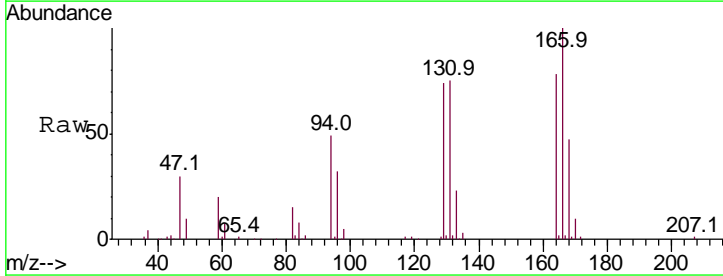
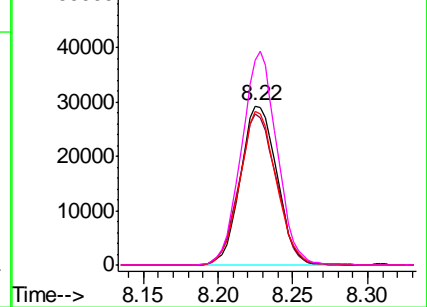


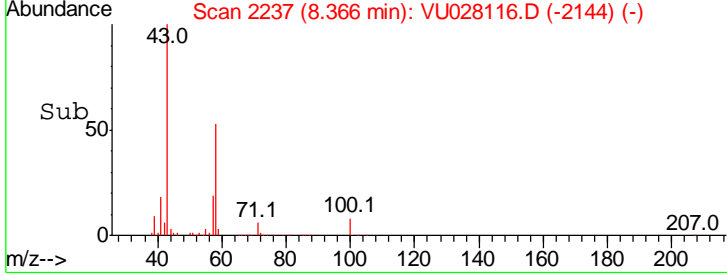
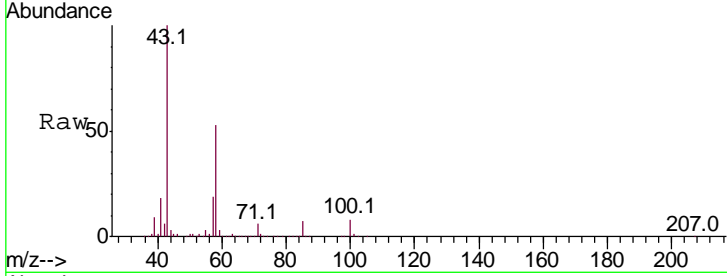
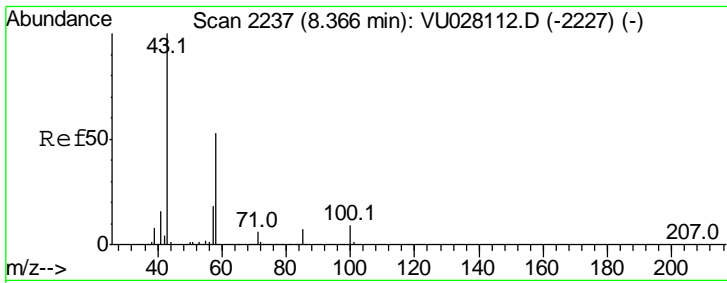
#47
 Tetrachloroethene
 Concen: 4.449 ug/L
 RT: 8.22 min Scan# 2193
 Delta R.T. -0.00 min
 Lab File: VU028116.D
 Acq: 14 Nov 2018 12:35

Tgt Ion	Resp	Lower	Upper
164	100		
129	94.8	69.7	129.4
131	96.2	64.0	118.8
166	128.4	86.4	160.4



Abundance
 Ion 163.90 (163.60 to 164.60): V
 Ion 128.95 (128.65 to 129.65): V
 Ion 130.95 (130.65 to 131.65): V
 Ion 165.90 (165.60 to 166.60): V



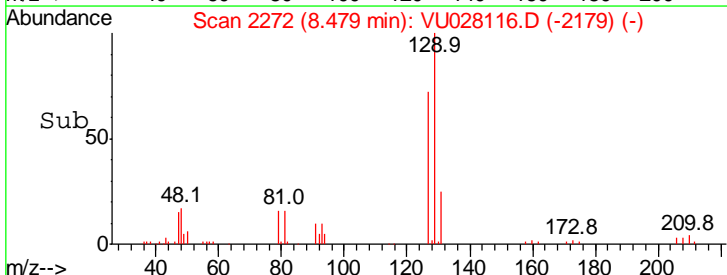
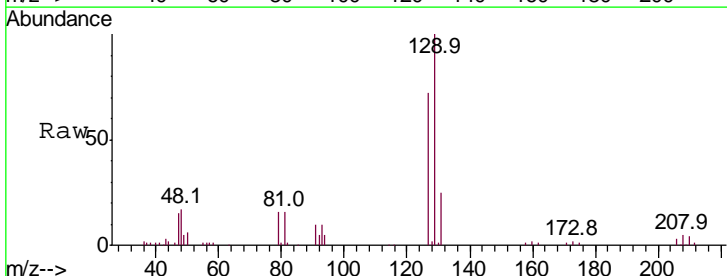
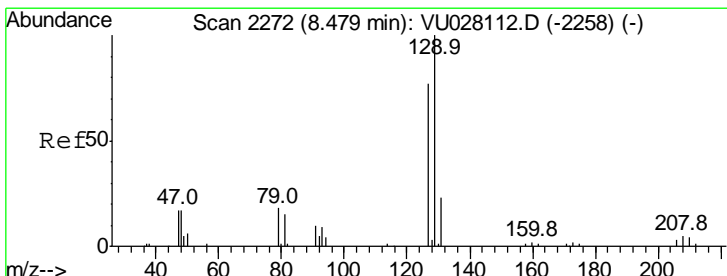
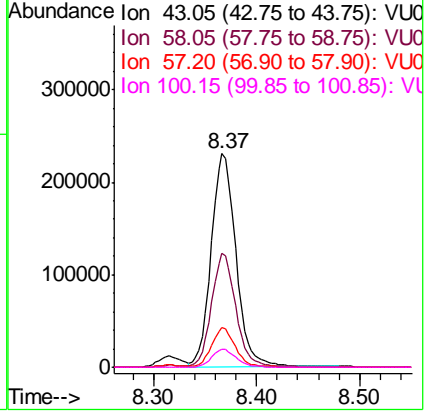


#48
 2-Hexanone
 Concen: 50.868 ug/L
 RT: 8.37 min Scan# 2237
 Delta R.T. 0.00 min
 Lab File: VU028116.D
 Acq: 14 Nov 2018 12:35

Instrument :
 MSVOA_U
 ClientSampled :

Tgt Ion: 43 Resp: 383938

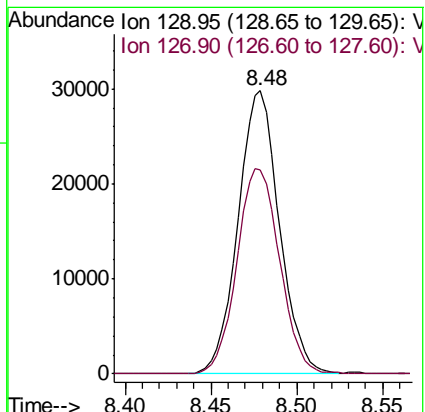
Ion	Ratio	Lower	Upper
43	100		
58	52.2	41.7	62.5
57	17.9	14.0	21.0
100	8.5	7.2	10.8

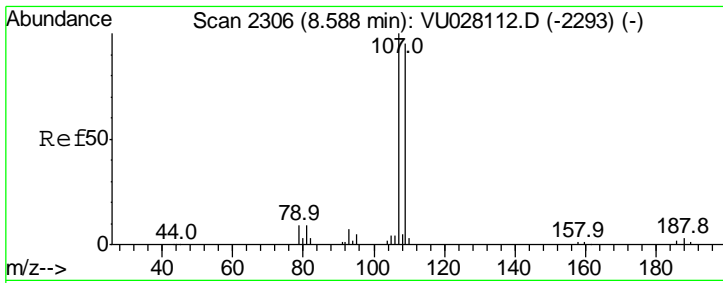


#49
 Dibromochloromethane
 Concen: 5.025 ug/L
 RT: 8.48 min Scan# 2272
 Delta R.T. 0.00 min
 Lab File: VU028116.D
 Acq: 14 Nov 2018 12:35

Tgt Ion: 129 Resp: 49744

Ion	Ratio	Lower	Upper
129	100		
127	71.9	54.1	100.5

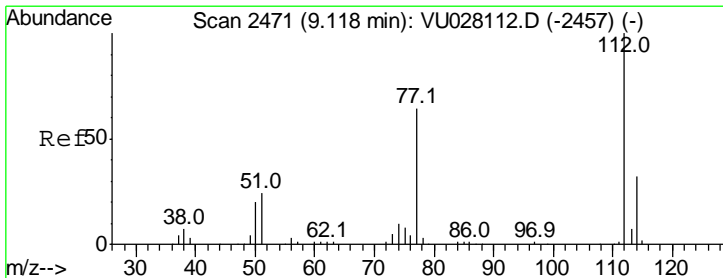
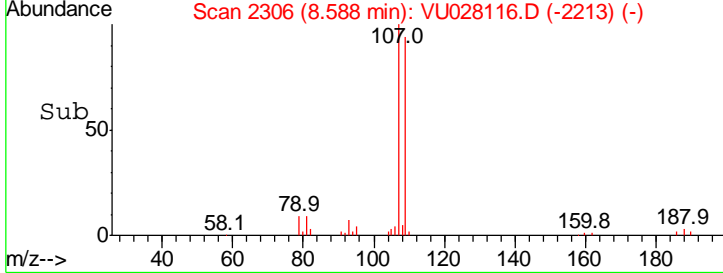
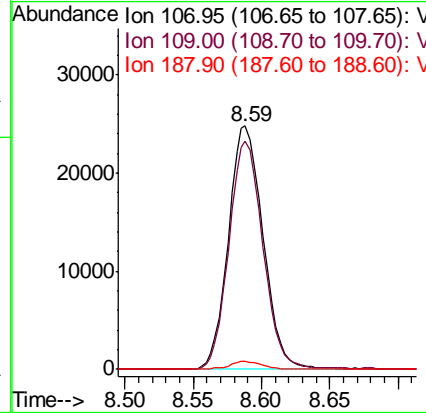
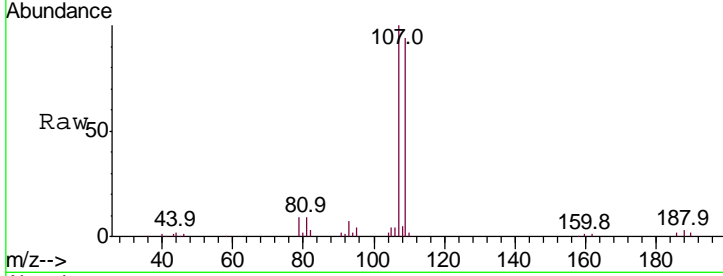




#50
 1,2-Dibromoethane
 Concen: 4.994 ug/L
 RT: 8.59 min Scan# 2306
 Delta R.T. 0.00 min
 Lab File: VU028116.D
 Acq: 14 Nov 2018 12:35

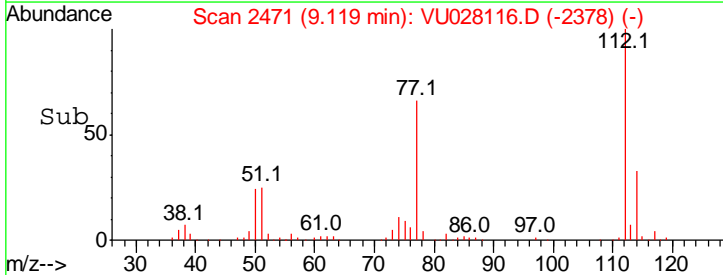
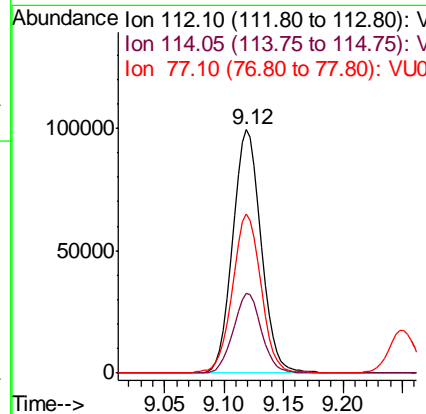
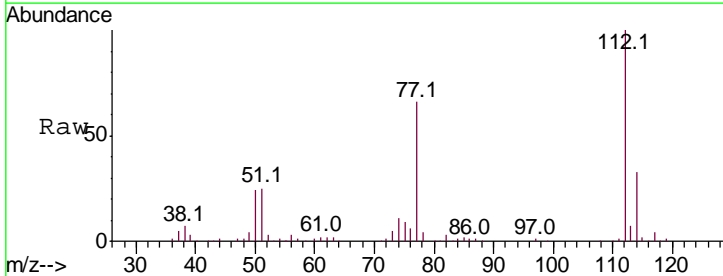
Instrument : MSVOA_U
 ClientSampled :

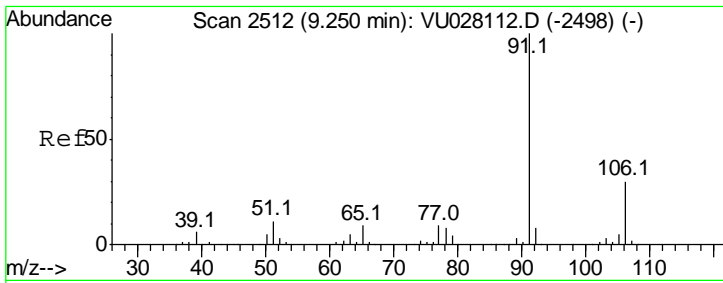
Tgt Ion	Resp	Lower	Upper
107	43722		
109	93.8	66.6	123.8
188	3.2	2.5	3.7



#51
 Chlorobenzene
 Concen: 4.897 ug/L
 RT: 9.12 min Scan# 2471
 Delta R.T. 0.00 min
 Lab File: VU028116.D
 Acq: 14 Nov 2018 12:35

Tgt Ion	Resp	Lower	Upper
112	164462		
114	32.6	22.5	41.7
77	65.6	51.3	76.9

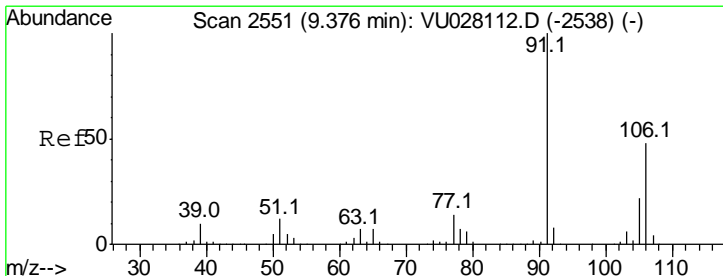
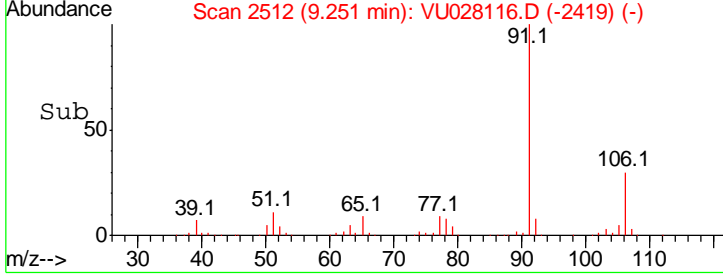
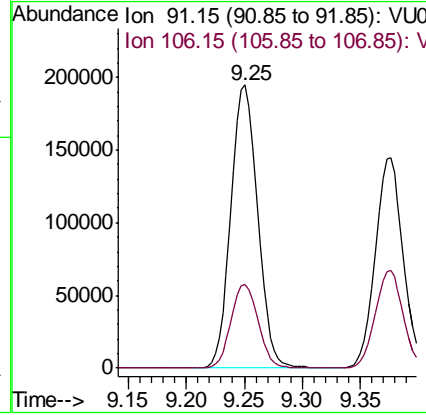
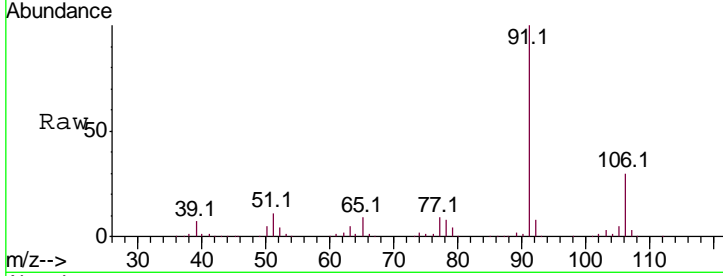




#52
Ethylbenzene
Concen: 4.962 ug/L
RT: 9.25 min Scan# 2512
Delta R.T. 0.00 min
Lab File: VU028116.D
Acq: 14 Nov 2018 12:35

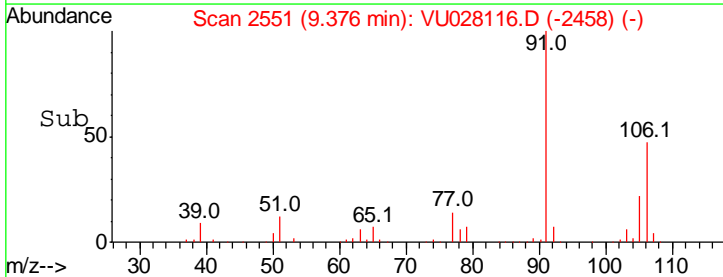
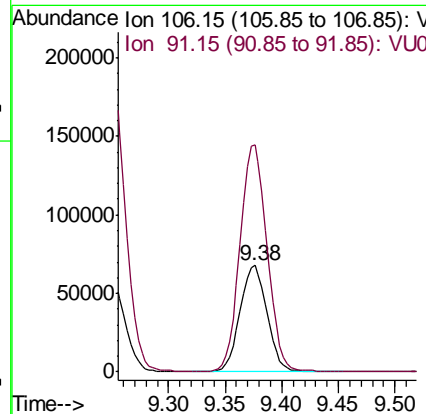
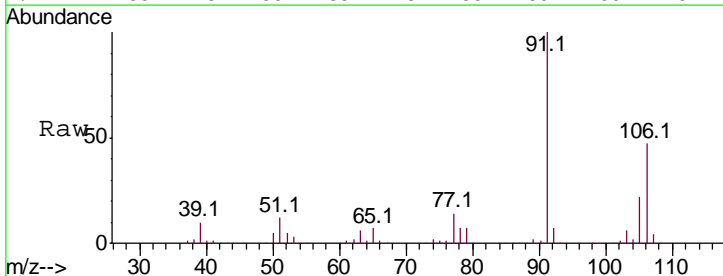
Instrument : MSVOA_U
ClientSampled :

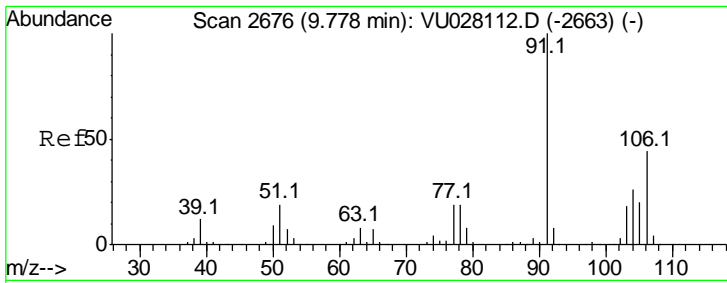
Tgt Ion: 91 Resp: 311060
Ion Ratio Lower Upper
91 100
106 29.6 20.9 38.7



#53
m,p-xylene
Concen: 4.970 ug/L
RT: 9.38 min Scan# 2551
Delta R.T. 0.00 min
Lab File: VU028116.D
Acq: 14 Nov 2018 12:35

Tgt Ion: 106 Resp: 113506
Ion Ratio Lower Upper
106 100
91 214.0 145.7 270.7

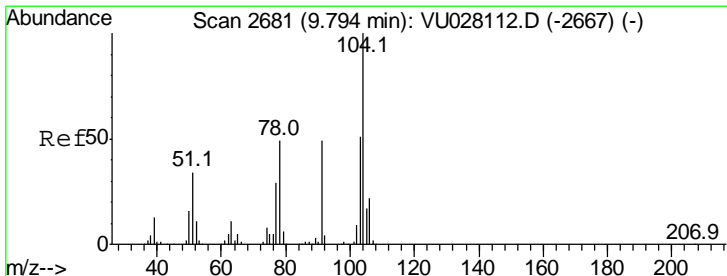
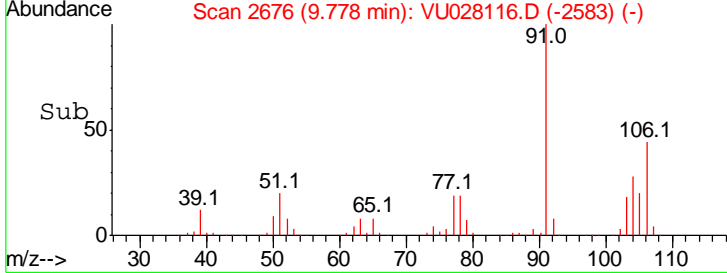
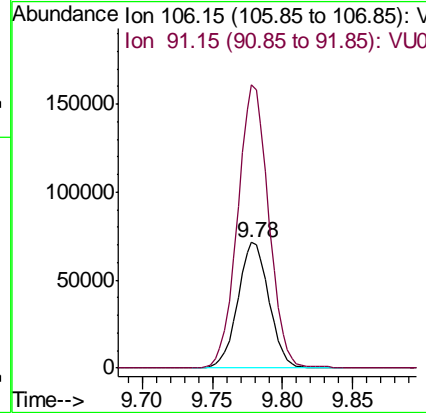
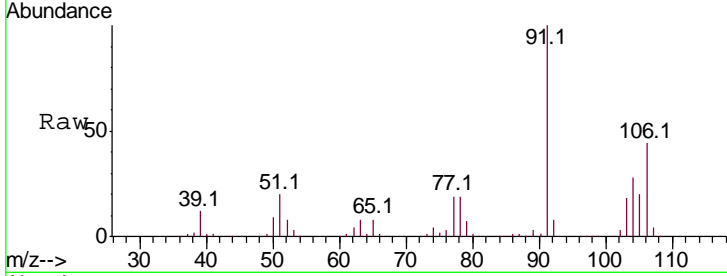




#54
 o-xylene
 Concen: 5.022 ug/L
 RT: 9.78 min Scan# 2676
 Delta R.T. 0.00 min
 Lab File: VU028116.D
 Acq: 14 Nov 2018 12:35

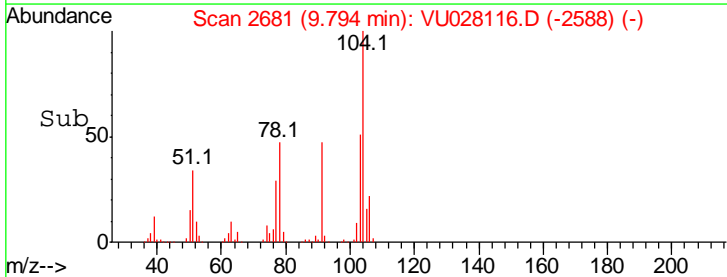
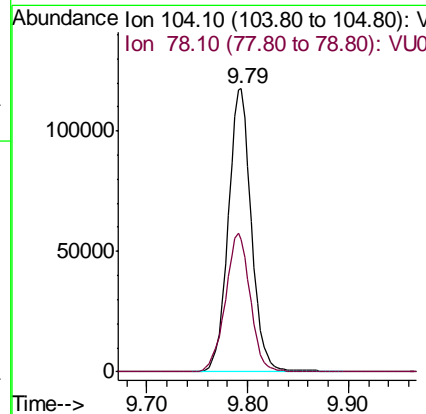
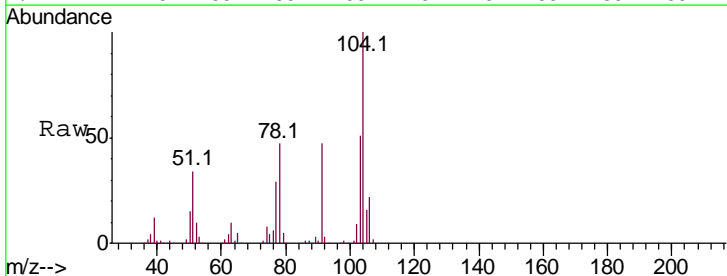
Instrument :
 MSVOA_U
 ClientSampled :

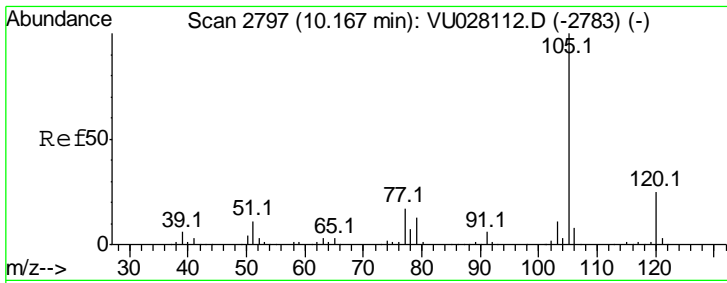
Tgt Ion:106 Resp: 110424
 Ion Ratio Lower Upper
 106 100
 91 225.4 158.7 294.7



#55
 Styrene
 Concen: 5.057 ug/L
 RT: 9.79 min Scan# 2681
 Delta R.T. 0.00 min
 Lab File: VU028116.D
 Acq: 14 Nov 2018 12:35

Tgt Ion:104 Resp: 188046
 Ion Ratio Lower Upper
 104 100
 78 46.6 34.5 64.1

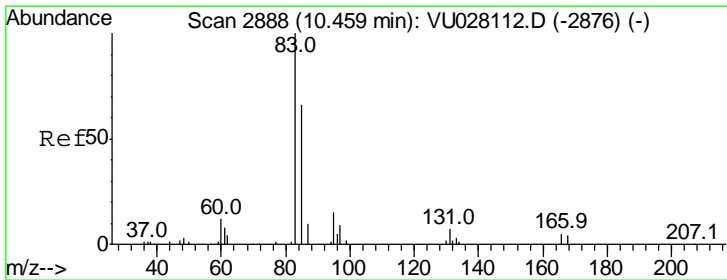
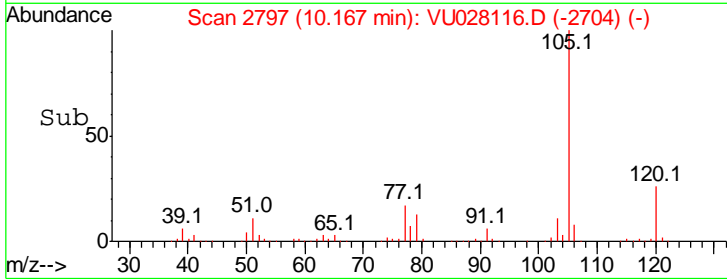
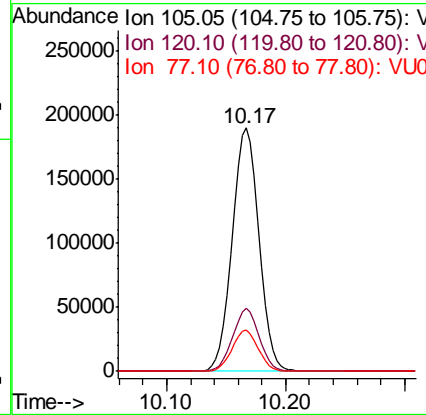
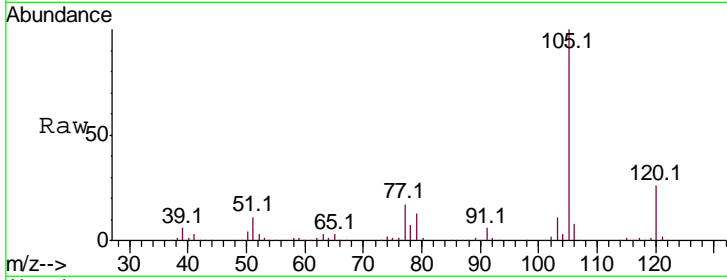




#56
 Isopropylbenzene
 Concen: 4.972 ug/L
 RT: 10.17 min Scan# 2797
 Delta R.T. 0.00 min
 Lab File: VU028116.D
 Acq: 14 Nov 2018 12:35

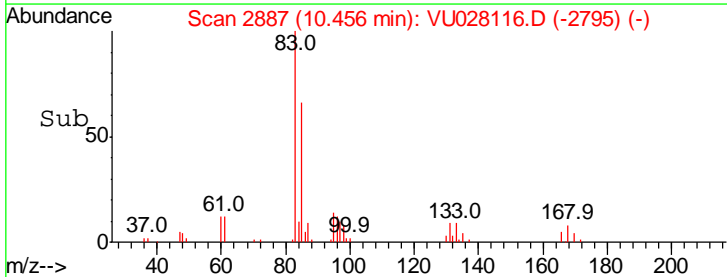
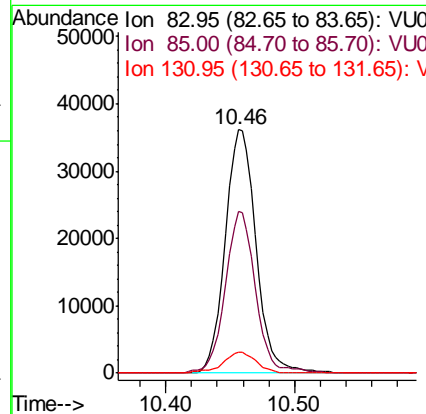
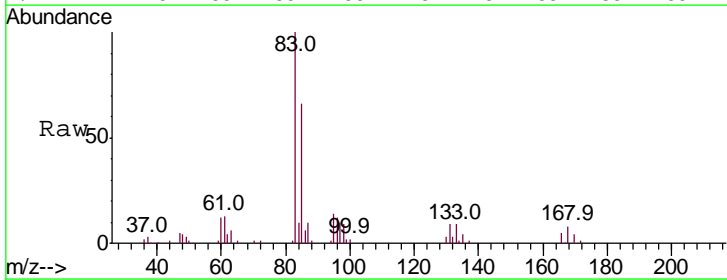
Instrument :
 MSVOA_U
 ClientSampled :

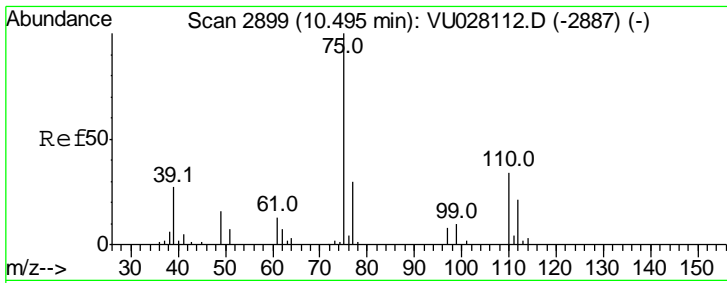
Tgt Ion	Resp	Lower	Upper
105	100		
120	25.4	20.5	30.7
77	16.6	13.3	19.9



#58
 1,1,2,2-Tetrachloroethane
 Concen: 5.006 ug/L
 RT: 10.46 min Scan# 2887
 Delta R.T. -0.00 min
 Lab File: VU028116.D
 Acq: 14 Nov 2018 12:35

Tgt Ion	Resp	Lower	Upper
83	100		
85	66.3	46.7	86.7
131	8.8	5.9	8.9

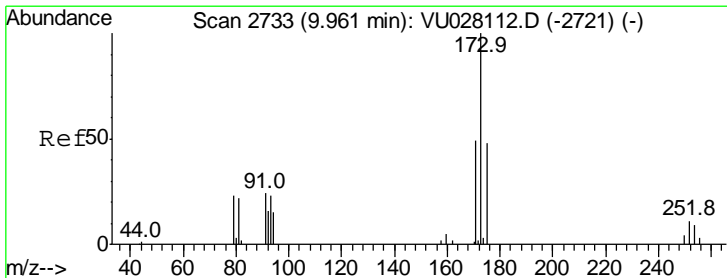
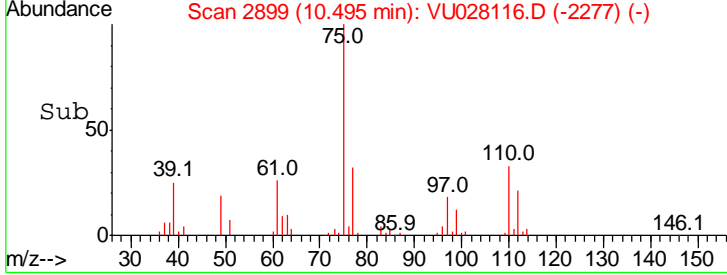
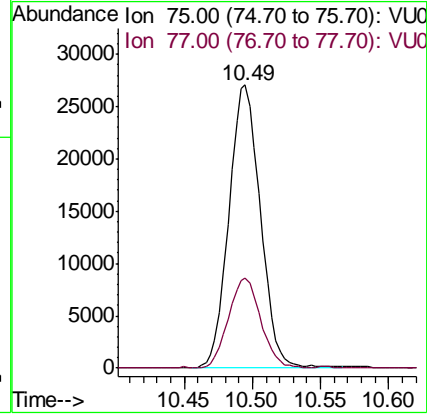
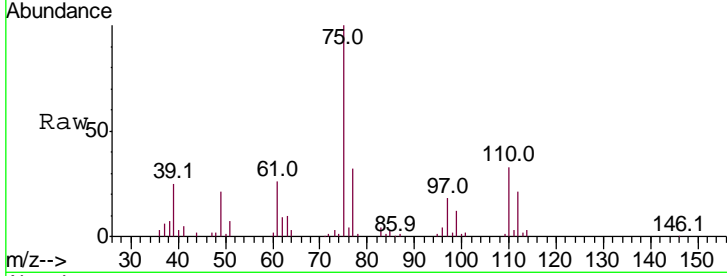




#59
 1,2,3-Trichloropropane
 Concen: 5.020 ug/L
 RT: 10.49 min Scan# 2899
 Delta R.T. 0.00 min
 Lab File: VU028116.D
 Acq: 14 Nov 2018 12:35

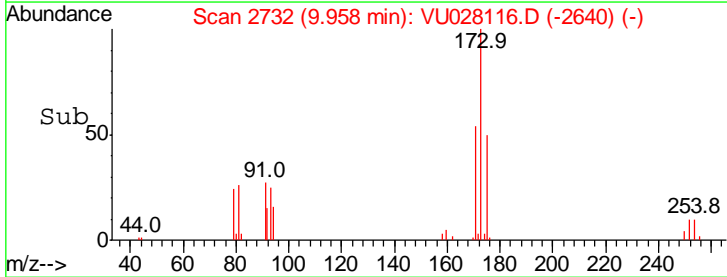
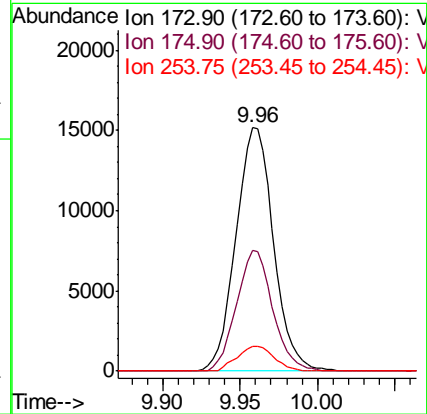
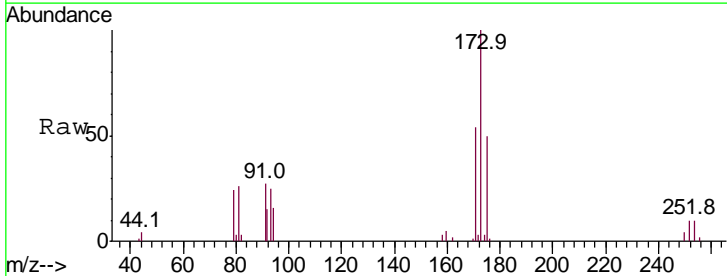
Instrument :
 MSVOA_U
 ClientSampled :

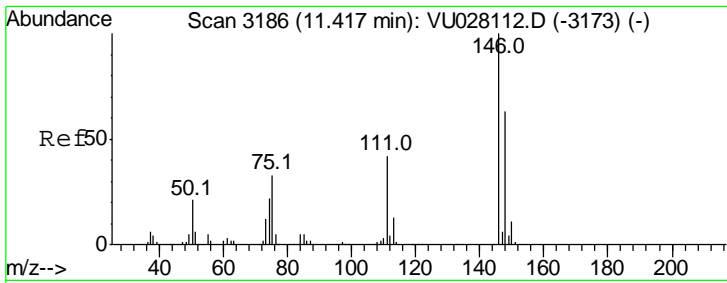
Tgt Ion	Resp	Lower	Upper
75	43433		
75	100		
77	32.6	25.4	38.0



#61
 Bromoform
 Concen: 4.799 ug/L
 RT: 9.96 min Scan# 2732
 Delta R.T. -0.00 min
 Lab File: VU028116.D
 Acq: 14 Nov 2018 12:35

Tgt Ion	Resp	Lower	Upper
173	25545		
173	100		
175	47.7	38.2	57.2
254	10.0	7.1	10.7

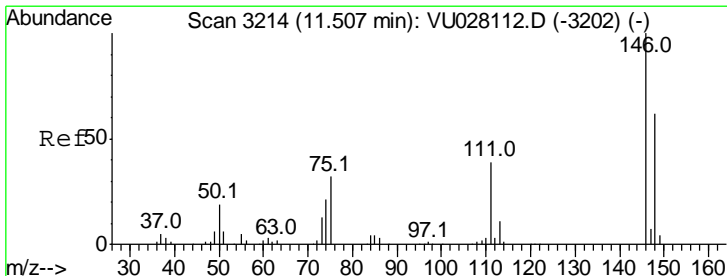
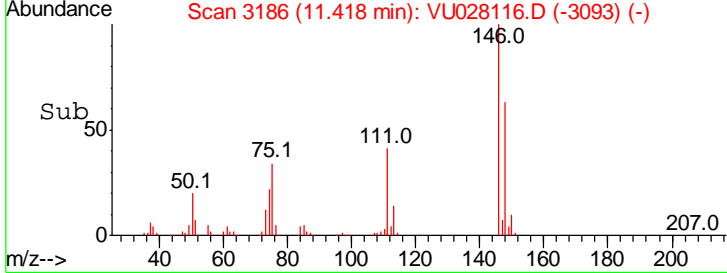
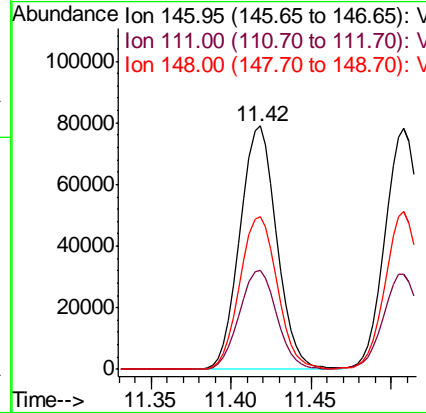
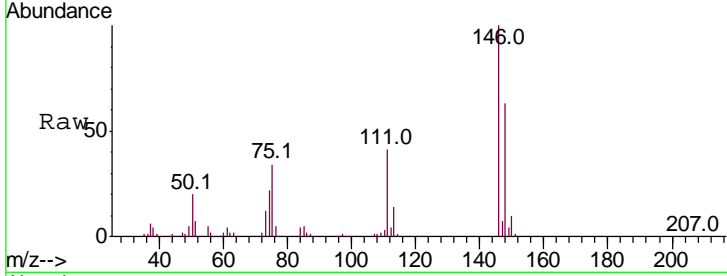




#62
 1,3-Dichlorobenzene
 Concen: 4.983 ug/L
 RT: 11.42 min Scan# 3186
 Delta R.T. 0.00 min
 Lab File: VU028116.D
 Acq: 14 Nov 2018 12:35

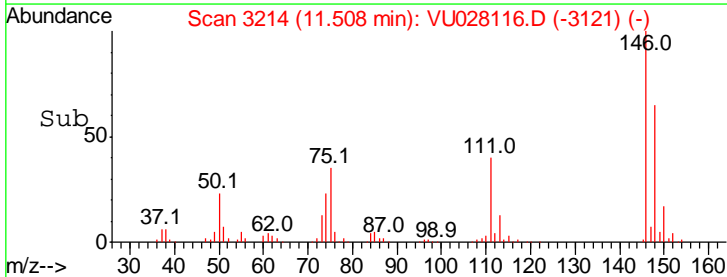
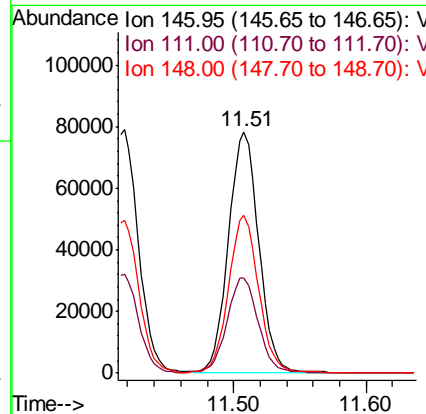
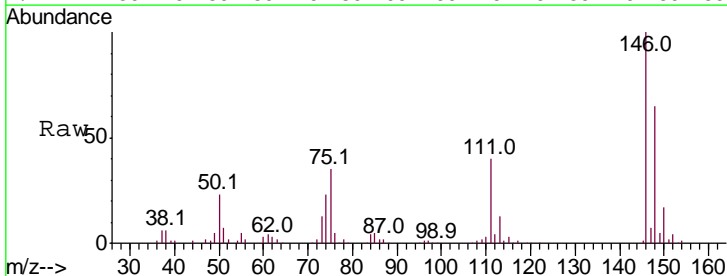
Instrument : MSVOA_U
 ClientSampled :

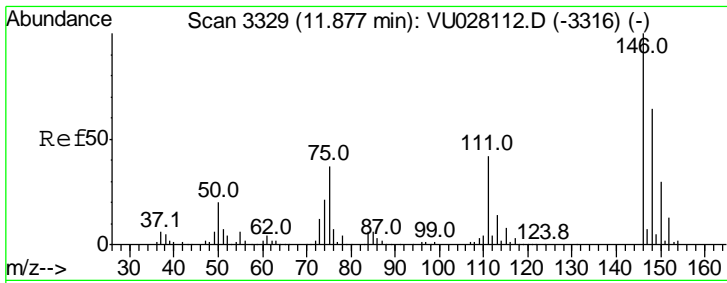
Tgt Ion	Resp	Lower	Upper
146	124022		
111	40.8	29.3	54.3
148	62.7	44.1	81.9



#63
 1,4-Dichlorobenzene
 Concen: 4.911 ug/L
 RT: 11.51 min Scan# 3214
 Delta R.T. 0.00 min
 Lab File: VU028116.D
 Acq: 14 Nov 2018 12:35

Tgt Ion	Resp	Lower	Upper
146	123723		
111	39.5	27.4	51.0
148	65.1	43.8	81.3

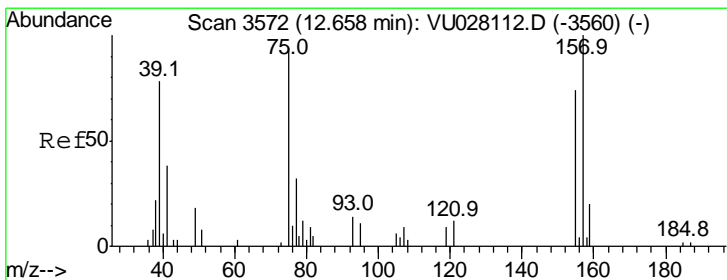
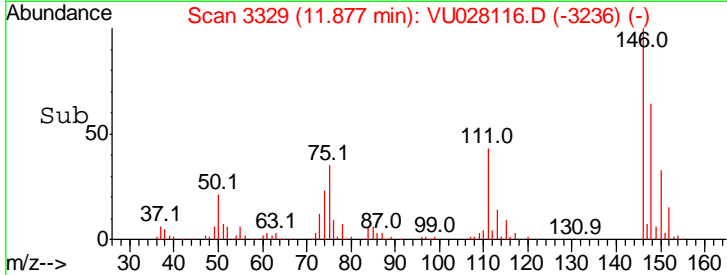
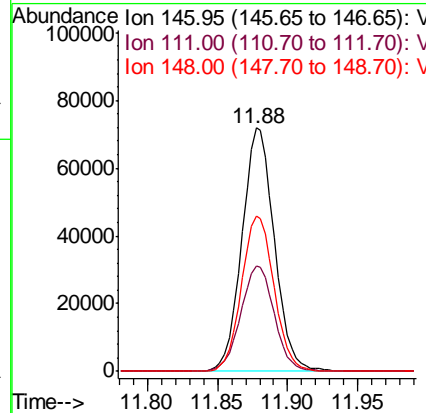
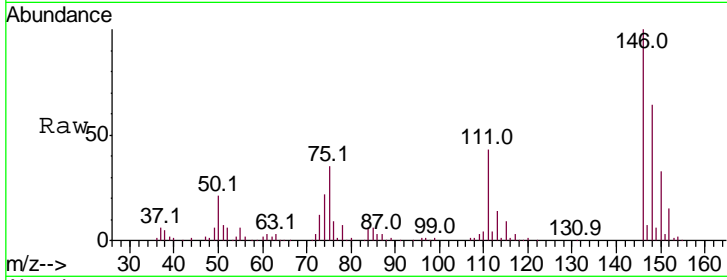




#65
 1,2-Dichlorobenzene
 Concen: 4.862 ug/L
 RT: 11.88 min Scan# 3329
 Delta R.T. 0.00 min
 Lab File: VU028116.D
 Acq: 14 Nov 2018 12:35

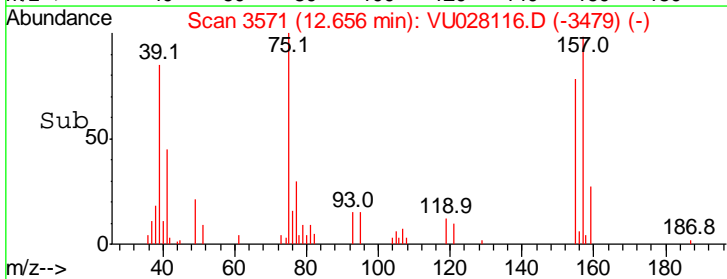
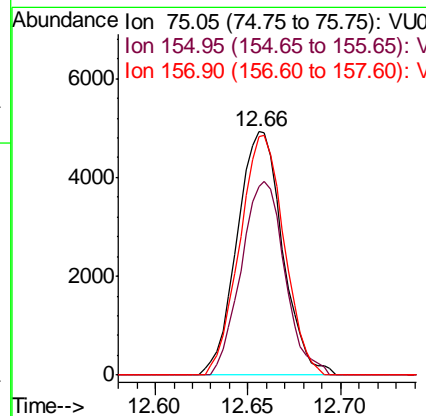
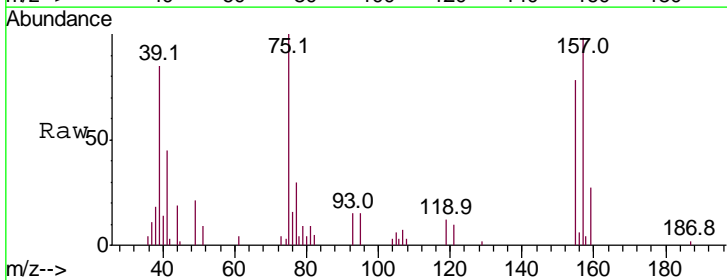
Instrument :
 MSVOA_U
 ClientSampled :

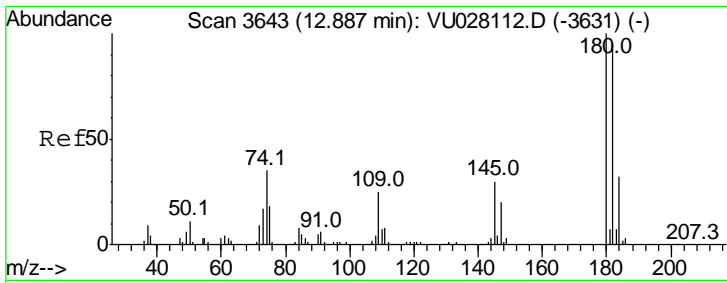
Tgt Ion	Resp	Lower	Upper
146	100		
111	43.0	33.9	50.9
148	64.0	50.9	76.3



#66
 1,2-Dibromo-3-chloropropane
 Concen: 4.850 ug/L
 RT: 12.66 min Scan# 3571
 Delta R.T. -0.00 min
 Lab File: VU028116.D
 Acq: 14 Nov 2018 12:35

Tgt Ion	Resp	Lower	Upper
75	100		
155	77.7	62.8	94.2
157	98.2	85.3	127.9

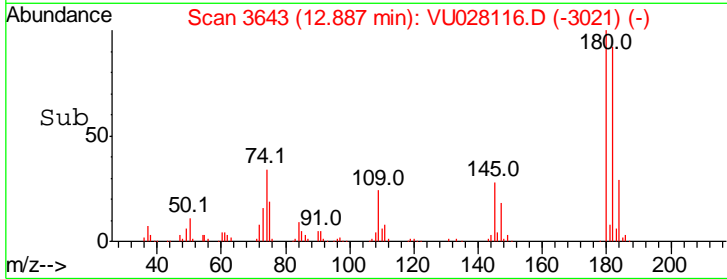
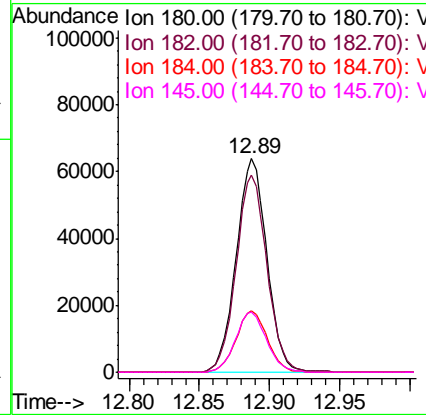
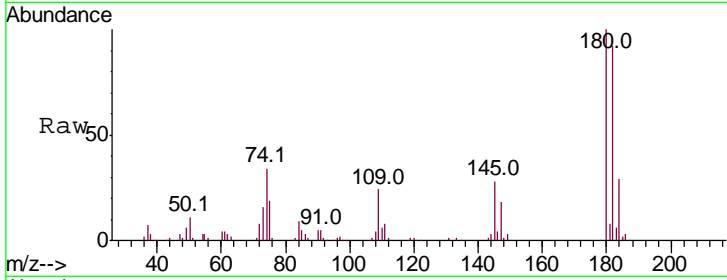




#67
 1,3,5-Trichlorobenzene
 Concen: 5.091 ug/L
 RT: 12.89 min Scan# 3643
 Delta R.T. 0.00 min
 Lab File: VU028116.D
 Acq: 14 Nov 2018 12:35

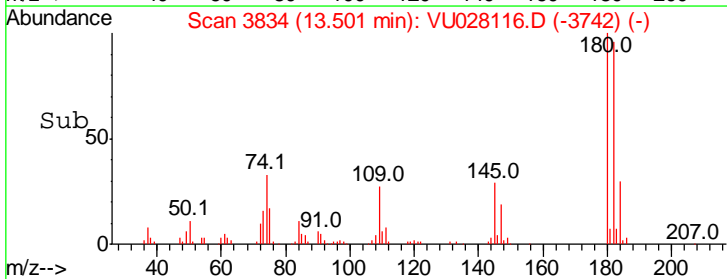
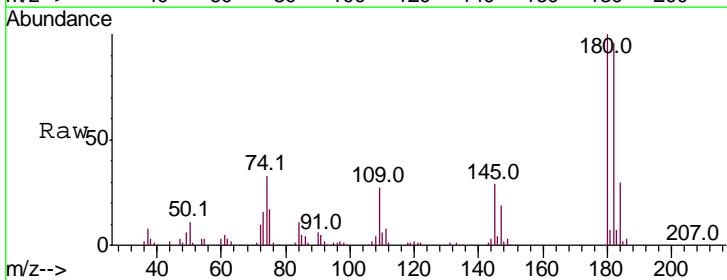
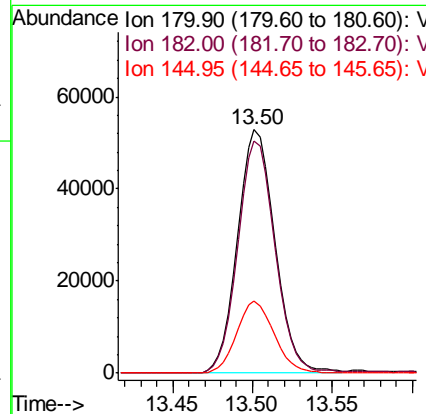
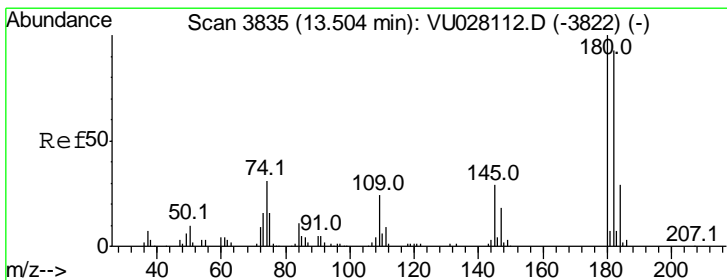
Instrument :
 MSVOA_U
 ClientSampled :

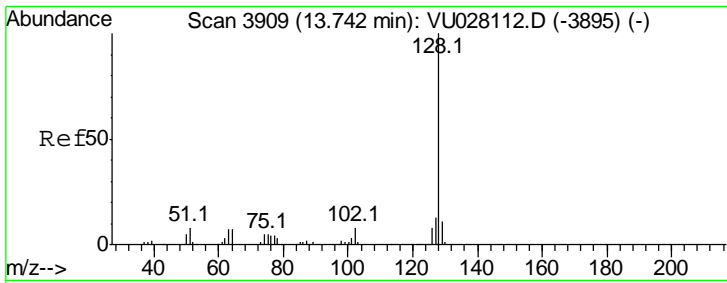
Tgt Ion	Resp	Lower	Upper
180	100		
182	92.8	76.6	114.8
184	29.3	24.7	37.1
145	28.8	24.0	36.0



#68
 1,2,4-trichlorobenzene
 Concen: 5.052 ug/L
 RT: 13.50 min Scan# 3834
 Delta R.T. -0.00 min
 Lab File: VU028116.D
 Acq: 14 Nov 2018 12:35

Tgt Ion	Resp	Lower	Upper
180	100		
182	94.9	75.1	112.7
145	29.5	23.4	35.0

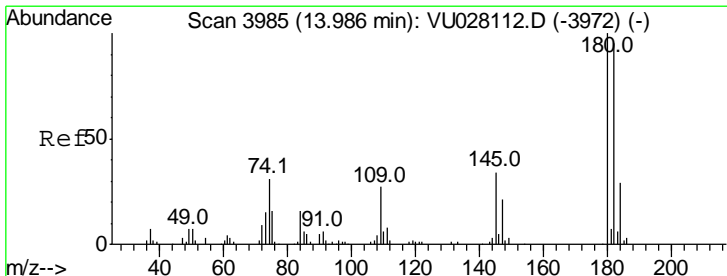
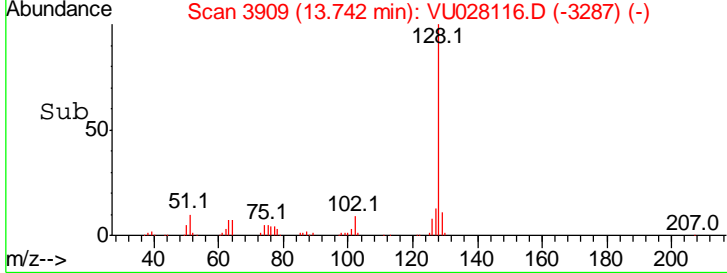
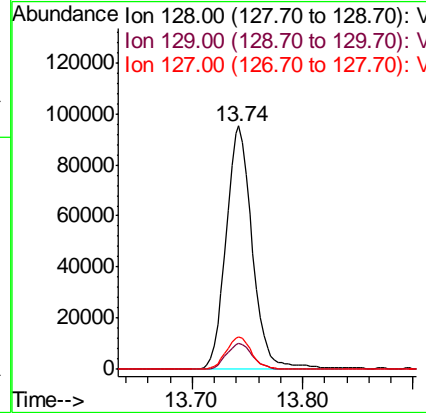
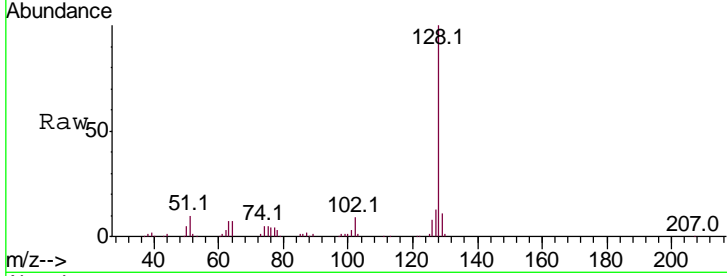




#69
 Naphthalene
 Concen: 5.081 ug/L
 RT: 13.74 min Scan# 3909
 Delta R.T. 0.00 min
 Lab File: VU028116.D
 Acq: 14 Nov 2018 12:35

Instrument :
 MSVOA_U
 ClientSampled :

Tgt Ion	Resp	Lower	Upper
128	157573		
129	10.6	8.5	12.7
127	13.0	10.2	15.4



#70
 1,2,3-Trichlorobenzene
 Concen: 5.114 ug/L
 RT: 13.99 min Scan# 3985
 Delta R.T. 0.00 min
 Lab File: VU028116.D
 Acq: 14 Nov 2018 12:35

Tgt Ion	Resp	Lower	Upper
180	78405		
182	93.8	77.6	116.4
145	31.5	26.2	39.4

