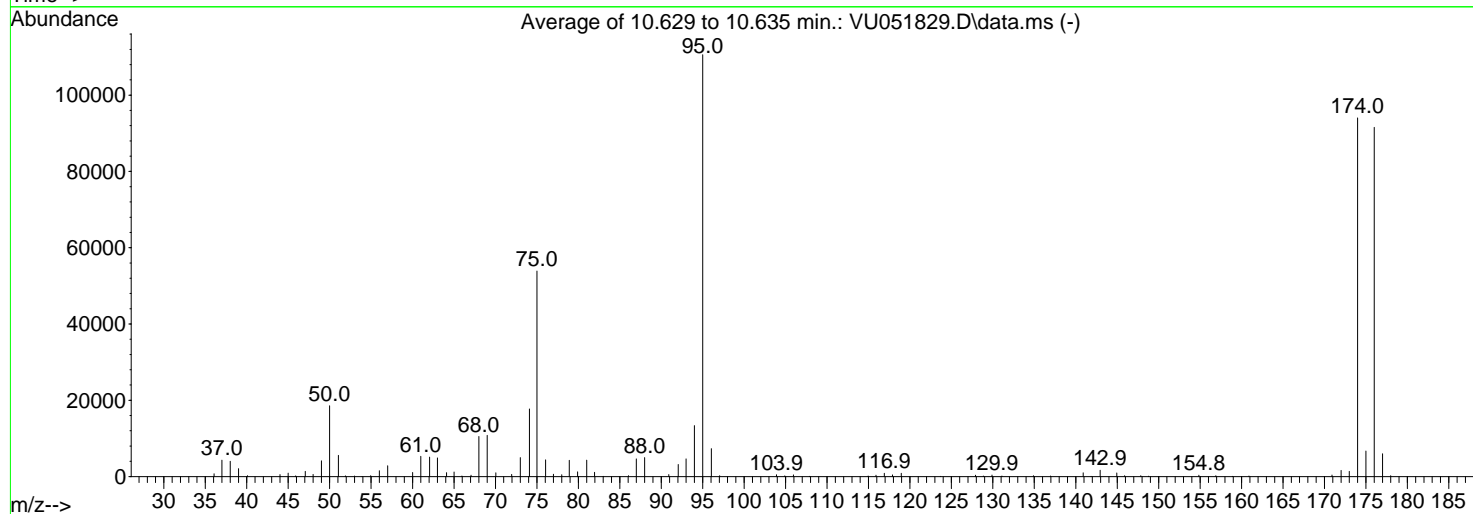
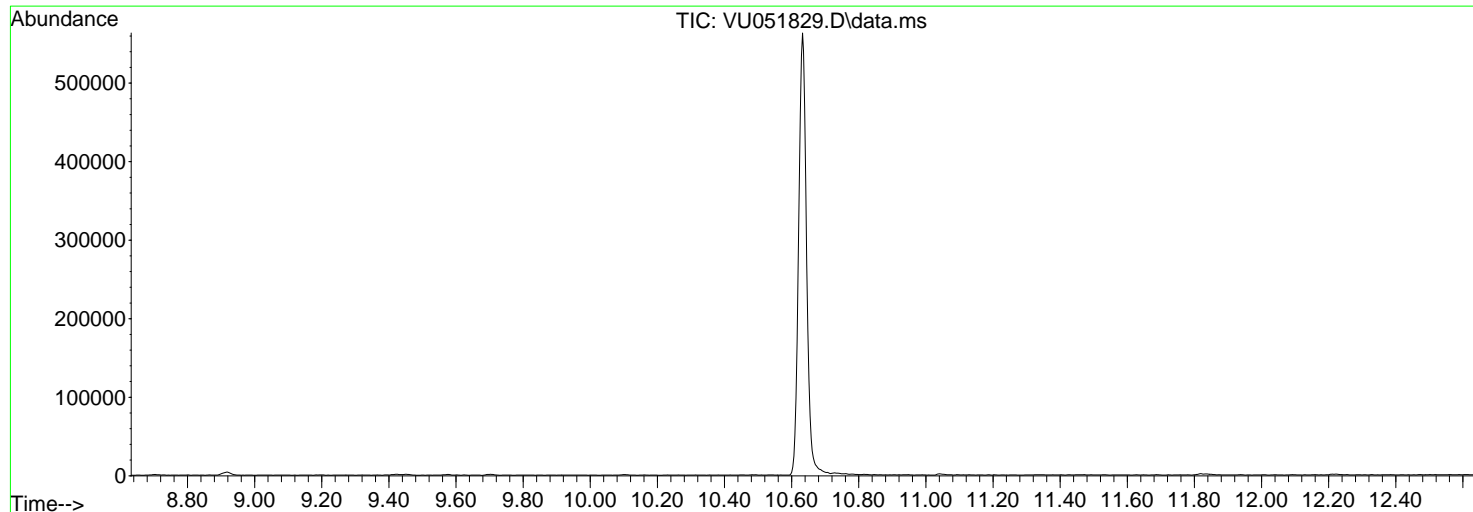


Data Path : Z:\voasrv\HPCHEM1\MSVOA_U\Data\VU111422\
 Data File : VU051829.D
 Acq On : 14 Nov 2022 11:15
 Operator : JC/MD
 Sample : BFB169
 Misc : 25.0mL/MSVOA_U/WATER
 ALS Vial : 1 Sample Multiplier: 1

Instrument :
 MSVOA_U
 ClientSampleId :
 BFB169

Integration File: rteint.p

Method : Z:\voasrv\HPCHEM1\MSVOA_U\Method\SFAMUTR102822WMA.M
 Title : TRACE VOA SFAM1.0
 Last Update : Tue Nov 15 03:00:15 2022



AutoFind: Scans 2889, 2890, 2891; Background Corrected with Scan 2876

Target Mass	Rel. to Mass	Lower Limit%	Upper Limit%	Rel. Abn%	Raw Abn	Result Pass/Fail
50	95	15	40	16.8	18544	PASS
75	95	30	80	48.7	53896	PASS
95	95	100	100	100.0	110587	PASS
96	95	5	9	6.6	7312	PASS
173	174	0.00	2	1.4	1352	PASS
174	95	50	120	85.0	94029	PASS
175	174	5	9	7.1	6712	PASS
176	174	95	101	97.4	91573	PASS
177	176	5	9	6.5	5978	PASS

m/z	Abundance
39.80	190.0
44.00	825.0

Instrument :
MSVOA_U
ClientSampleId :
BFB169

m/z	Abundance
36.00	752.0
37.00	4410.0
38.00	4008.0
39.00	1976.0
40.10	250.0
44.00	1305.0
45.00	1042.0
45.90	201.0
47.00	1447.0
48.00	546.0
49.00	3981.0
50.00	18328.0
51.10	5683.0
51.90	180.0
53.00	154.0
53.90	103.0
55.00	191.0
56.00	1548.0
57.00	3045.0
60.00	1074.0
61.00	5412.0
62.00	4950.0
63.00	4863.0
64.10	1057.0
65.00	1138.0
66.00	129.0
67.10	384.0
68.00	10331.0
69.00	10925.0
70.00	949.0
72.00	460.0
73.00	5029.0
74.10	17496.0
75.00	53952.0
76.00	4385.0
77.00	647.0
78.00	508.0
78.90	4196.0
79.90	1185.0
81.00	4197.0
82.00	1088.0
83.00	114.0
86.10	208.0
87.00	4922.0
88.00	4973.0
90.90	433.0
92.00	3167.0
93.00	4533.0
94.00	13327.0
95.00	107984.0
96.00	7434.0
97.00	248.0
103.90	397.0
104.90	188.0
105.90	438.0
114.90	114.0
116.00	349.0
116.90	914.0
117.90	430.0
118.90	909.0
127.90	288.0
128.80	140.0
129.90	339.0
131.10	137.0
134.90	205.0
137.00	174.0
140.90	973.0
141.90	101.0
142.90	1647.0
144.90	905.0
145.90	196.0
147.90	244.0
148.80	144.0
150.00	117.0
154.80	289.0
156.90	195.0
160.90	154.0
170.90	378.0
172.00	1548.0
173.00	1441.0
174.00	90024.0
175.00	6622.0
176.00	87248.0
177.00	5761.0
178.00	221.0

Instrument :
MSVOA_U
ClientSampleId :
BFB169

m/z	Abundance
36.00	741.0
37.00	4403.0
38.00	4146.0
39.00	2145.0
40.10	255.0
44.00	1392.0
45.00	948.0
45.90	198.0
47.10	1414.0
48.00	585.0
49.00	4224.0
50.00	19072.0
51.00	5667.0
51.90	233.0
53.00	155.0
55.00	244.0
56.00	1593.0
57.00	2984.0
60.00	1101.0
61.00	5464.0
62.10	5238.0
63.00	5071.0
64.10	1086.0
65.00	1229.0
66.00	129.0
67.10	379.0
68.00	10834.0
69.00	11166.0
70.10	1024.0
72.00	582.0
73.00	5141.0
74.10	18336.0
75.00	55664.0
76.00	4528.0
77.00	605.0
78.00	521.0
78.90	4421.0
79.90	1276.0
81.00	4495.0
82.00	1151.0
83.00	119.0
86.10	226.0
87.00	4752.0
88.00	5162.0
90.90	539.0
92.00	3257.0
93.00	4838.0
94.00	13886.0
95.00	114064.0
96.10	7403.0
97.10	225.0
103.90	505.0
104.90	194.0
106.00	480.0
115.00	165.0
115.90	366.0
116.90	886.0
117.90	474.0
118.90	897.0
123.70	114.0
127.90	401.0
128.80	130.0
129.90	413.0
131.10	176.0
134.90	260.0
137.00	144.0
140.90	1068.0
141.80	113.0
142.90	1701.0
144.90	1007.0
145.90	228.0
147.90	225.0
148.80	122.0
154.90	352.0
156.90	241.0
158.90	103.0
160.90	129.0
170.90	466.0
172.00	1651.0
173.00	1443.0
174.00	97232.0
175.00	6899.0
176.00	94536.0
177.00	6200.0
178.00	242.0

Instrument :
MSVOA_U
ClientSampleId :
BFB169

m/z	Abundance
36.10	662.0
37.00	4097.0
38.00	3836.0
39.00	2141.0
40.10	253.0
44.00	1343.0
45.00	729.0
45.90	180.0
47.10	1288.0
48.00	542.0
49.00	4165.0
50.00	18232.0
51.00	5343.0
51.90	220.0
53.00	159.0
54.90	269.0
56.00	1395.0
57.00	2470.0
60.00	1042.0
61.00	5086.0
62.10	5077.0
63.00	4755.0
64.10	996.0
65.00	1242.0
65.90	153.0
67.00	304.0
68.00	10358.0
69.00	10371.0
70.10	983.0
71.90	663.0
73.00	4769.0
74.10	17328.0
75.00	52072.0
76.10	4302.0
77.00	583.0
78.00	441.0
78.90	4230.0
79.90	1283.0
81.00	4277.0
81.90	1077.0
85.90	236.0
87.00	4293.0
88.00	4821.0
90.90	564.0
92.10	3104.0
93.00	4606.0
94.00	12905.0
95.00	109712.0
96.10	7100.0
97.10	214.0
103.90	524.0
104.90	155.0
106.00	471.0
107.90	141.0
115.00	167.0
115.80	377.0
116.90	840.0
117.90	456.0
119.00	827.0
123.70	113.0
127.90	448.0
128.90	136.0
129.90	423.0
131.10	160.0
134.90	263.0
136.90	126.0
140.90	936.0
143.00	1689.0
145.00	977.0
145.90	230.0
147.80	188.0
154.90	389.0
156.90	229.0
158.90	132.0
160.90	107.0
170.90	411.0
172.00	1695.0
173.00	1173.0
174.00	94832.0
175.00	6615.0
176.00	92936.0
177.00	5973.0
178.00	230.0

Instrument :
MSVOA_U
ClientSampleId :
BFB169