

Data Path : Z:\voasrv\HPCHEM1\MSVOA_U\Data\VU111522\
 Data File : VU051863.D
 Acq On : 15 Nov 2022 16:47
 Operator : JC/MD
 Sample : VU1115WBL01
 Misc : 5.0mL/MSVOA_U/WATER
 ALS Vial : 12 Sample Multiplier: 1

Instrument :
 MSVOA_U
 ClientSampleId :
 VBLK011

Quant Time: Nov 16 01:10:29 2022
 Quant Method : Z:\voasrv\HPCHEM1\MSVOA_U\Method\SFAMULM111522WMA.M
 Quant Title : VOC Analysis
 QLast Update : Wed Nov 16 01:02:23 2022
 Response via : Initial Calibration

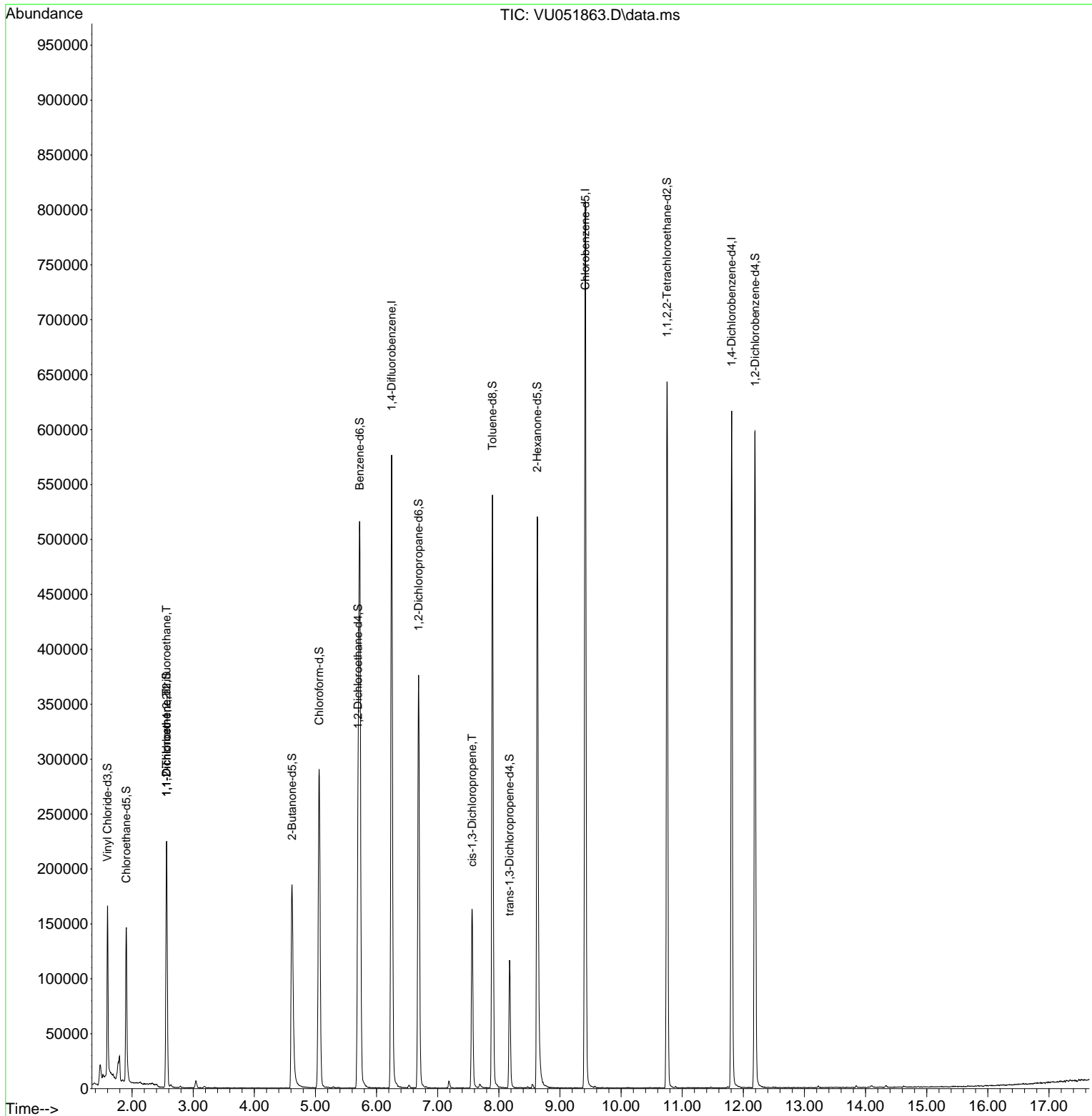
Compound	R.T.	QIon	Response	Conc	Units	Dev(Min)
Internal Standards						
1) 1,4-Difluorobenzene	6.247	114	478972	50.000	ug/L	0.00
28) Chlorobenzene-d5	9.414	117	462387	50.000	ug/L	0.00
58) 1,4-Dichlorobenzene-d4	11.809	152	167298	50.000	ug/L	0.00
System Monitoring Compounds						
4) Vinyl Chloride-d3	1.597	65	110858	47.145	ug/L	0.00
Spiked Amount	50.000	Range 60 - 135	Recovery =	94.300%		
7) Chloroethane-d5	1.906	69	117298	49.788	ug/L	0.00
Spiked Amount	50.000	Range 70 - 130	Recovery =	99.580%		
11) 1,1-Dichloroethene-d2	2.565	63	132609	31.449	ug/L	0.00
Spiked Amount	50.000	Range 60 - 125	Recovery =	62.900%		
21) 2-Butanone-d5	4.616	46	265352	99.240	ug/L	0.00
Spiked Amount	100.000	Range 40 - 130	Recovery =	99.240%		
24) Chloroform-d	5.060	84	279149	47.357	ug/L	0.00
Spiked Amount	50.000	Range 70 - 125	Recovery =	94.720%		
26) 1,2-Dichloroethane-d4	5.697	65	175715	48.698	ug/L	0.00
Spiked Amount	50.000	Range 70 - 125	Recovery =	97.400%		
32) Benzene-d6	5.726	84	496061	51.453	ug/L	0.00
Spiked Amount	50.000	Range 70 - 125	Recovery =	102.900%		
36) 1,2-Dichloropropane-d6	6.687	67	187597	52.275	ug/L	0.00
Spiked Amount	50.000	Range 70 - 120	Recovery =	104.560%		
41) Toluene-d8	7.896	98	368549	46.573	ug/L	0.00
Spiked Amount	50.000	Range 80 - 120	Recovery =	93.140%		
43) trans-1,3-Dichloroprop...	8.176	79	66264	46.358	ug/L	0.00
Spiked Amount	50.000	Range 60 - 125	Recovery =	92.720%		
47) 2-Hexanone-d5	8.629	63	174753	95.816	ug/L	0.00
Spiked Amount	100.000	Range 45 - 130	Recovery =	95.820%		
56) 1,1,2,2-Tetrachloroeth...	10.751	84	333594	47.762	ug/L	0.00
Spiked Amount	50.000	Range 65 - 120	Recovery =	95.520%		
66) 1,2-Dichlorobenzene-d4	12.192	152	166203	56.452	ug/L	0.00
Spiked Amount	50.000	Range 80 - 120	Recovery =	112.900%		
Target Compounds						
10) 1,1,2-Trichloro-1,2,2-...	2.565	101	1542	0.505	ug/L #	26
12) 1,1-Dichloroethene	2.565	96	985	0.345	ug/L #	1
39) cis-1,3-Dichloropropene	7.565	75	3804	0.772	ug/L #	74

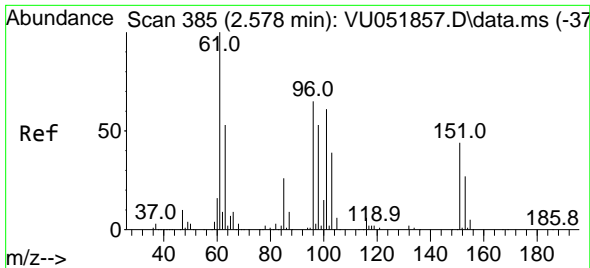
(#) = qualifier out of range (m) = manual integration (+) = signals summed

Data Path : Z:\voasrv\HPCHEM1\MSVOA_U\Data\VU111522\
 Data File : VU051863.D
 Acq On : 15 Nov 2022 16:47
 Operator : JC/MD
 Sample : VU1115WBL01
 Misc : 5.0mL/MSVOA_U/WATER
 ALS Vial : 12 Sample Multiplier: 1

Instrument :
 MSVOA_U
 ClientSampleId :
 VBLK011

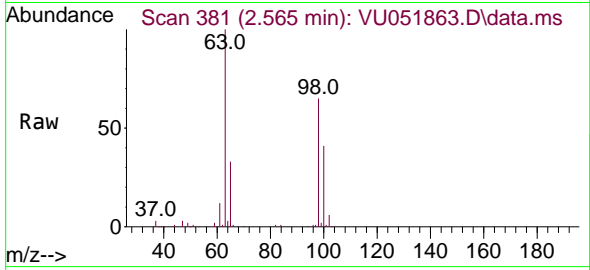
Quant Time: Nov 16 01:10:29 2022
 Quant Method : Z:\voasrv\HPCHEM1\MSVOA_U\Method\SFAMULM111522WMA.M
 Quant Title : VOC Analysis
 QLast Update : Wed Nov 16 01:02:23 2022
 Response via : Initial Calibration





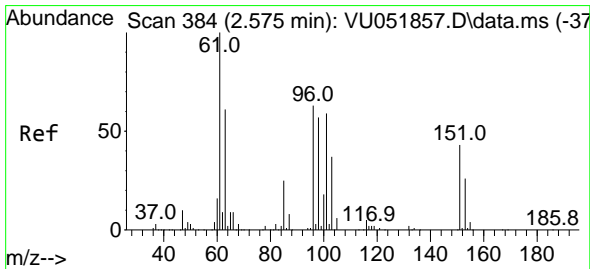
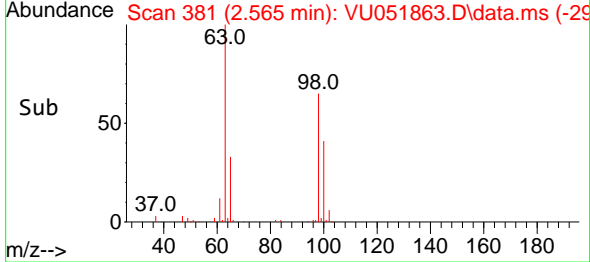
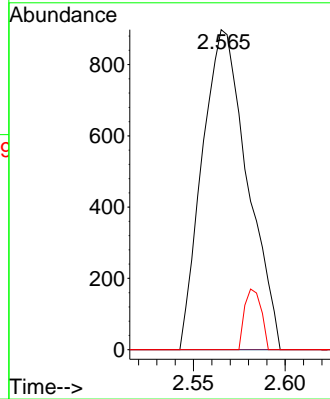
#10
 1,1,2-Trichloro-1,2,2-trifluoroethane
 Concen: 0.505 ug/L
 RT: 2.565 min Scan# 381
 Delta R.T. -0.013 min
 Lab File: VU051863.D
 Acq: 15 Nov 2022 16:47

Instrument : MSVOA_U
 ClientSampleId : VBLK011



Tgt Ion: 101 Resp: 1542

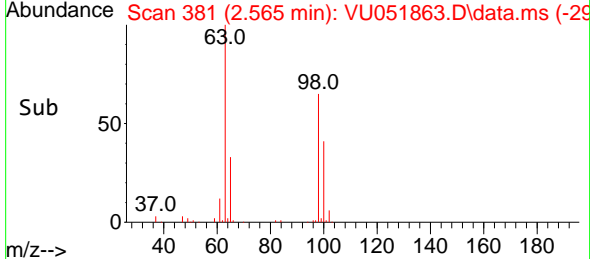
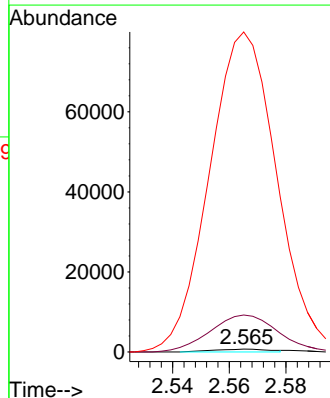
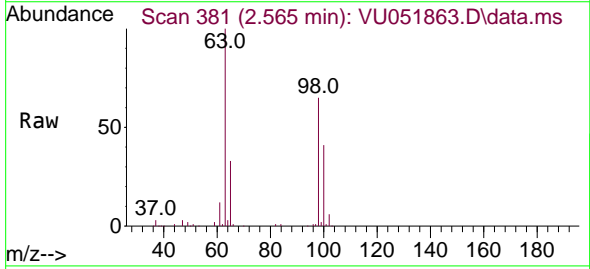
Ion	Ratio	Lower	Upper
101	100		
85	0.0	34.2	51.2#
151	6.9	58.3	87.5#

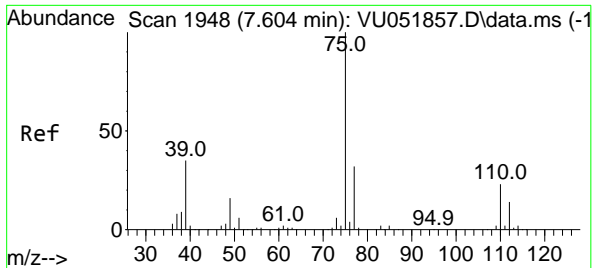


#12
 1,1-Dichloroethene
 Concen: 0.345 ug/L
 RT: 2.565 min Scan# 381
 Delta R.T. -0.010 min
 Lab File: VU051863.D
 Acq: 15 Nov 2022 16:47

Tgt Ion: 96 Resp: 985

Ion	Ratio	Lower	Upper
96	100		
61	1294.8	110.7	205.5#
63	11230.3	68.6	127.4#





#39
 cis-1,3-Dichloropropene
 Concen: 0.772 ug/L
 RT: 7.565 min Scan# 1936
 Delta R.T. -0.039 min
 Lab File: VU051863.D
 Acq: 15 Nov 2022 16:47

Instrument : MSVOA_U
 ClientSampleId : VBLK011

Tgt Ion	Resp	Ion Ratio	Lower	Upper
75	3804	100		
77		46.5	22.5	41.7#

