

Data Path : Z:\voasrv\HPCHEM1\MSVOA\_U\Data\VU111523\  
 Data File : VU056350.D  
 Acq On : 15 Nov 2023 12:38  
 Operator : MD/SY  
 Sample : VW1115WBL01  
 Misc : 25mL/MSVOA\_U/WATER  
 ALS Vial : 1 Sample Multiplier: 1

Instrument :  
 MSVOA\_U  
 ClientSampleId :

Quant Time: Nov 16 04:37:51 2023  
 Quant Method : Z:\voasrv\HPCHEM1\MSVOA\_U\Method\SFAMUTR111323WMA.M  
 Quant Title : TRACE VOA SFAM1.0  
 QLast Update : Thu Nov 16 04:37:29 2023  
 Response via : Initial Calibration

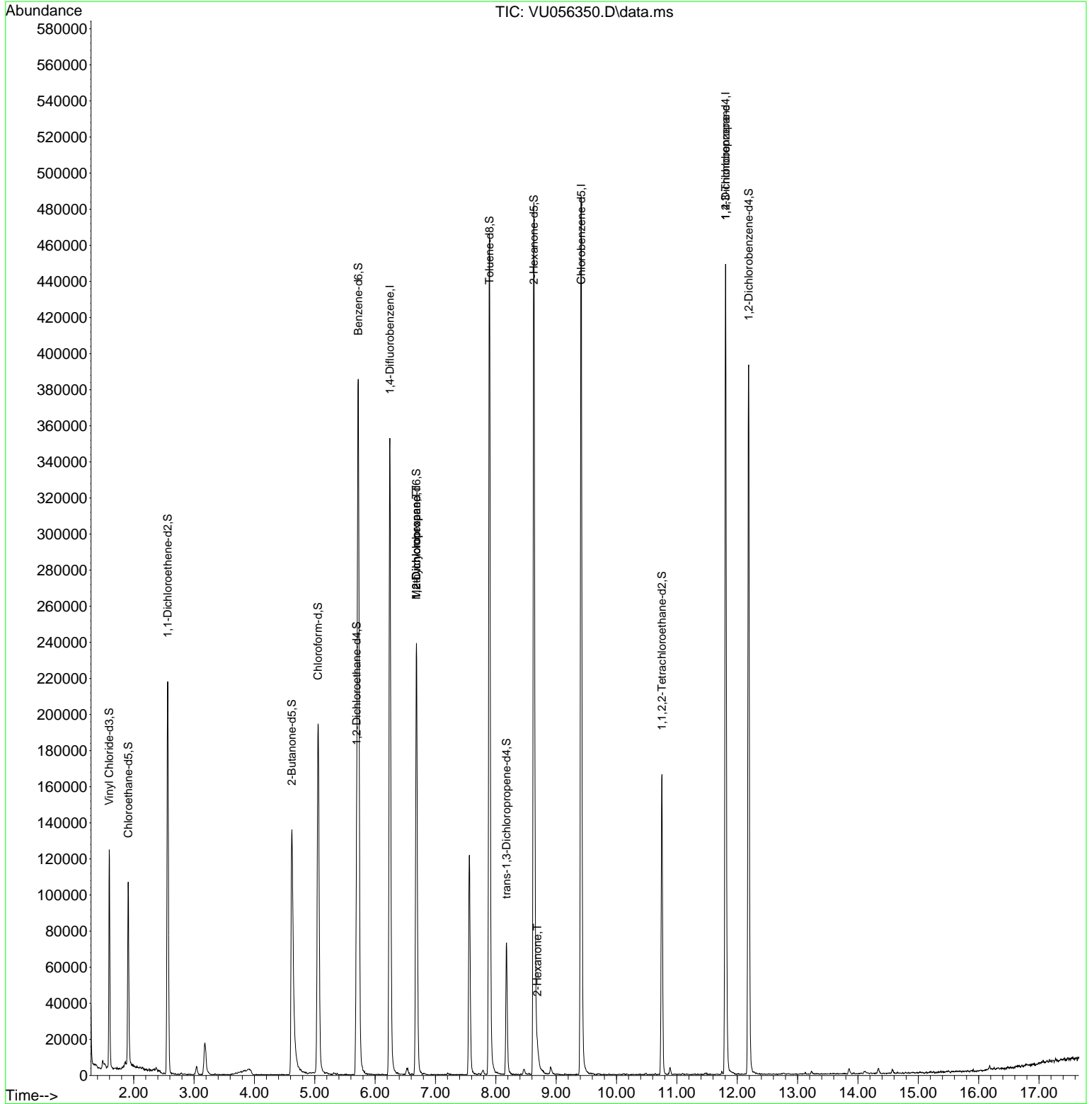
Compound	R.T.	QIon	Response	Conc	Units	Dev(Min)
Internal Standards						
1) 1,4-Difluorobenzene	6.245	114	289779	5.000	ug/L	0.00
28) Chlorobenzene-d5	9.415	117	279991	5.000	ug/L	0.00
58) 1,4-Dichlorobenzene-d4	11.807	152	120053	5.000	ug/L	0.00
System Monitoring Compounds						
4) Vinyl Chloride-d3	1.596	65	86675	3.999	ug/L	0.00
Spiked Amount	5.000	Range 40 - 130	Recovery	=	80.000%	
7) Chloroethane-d5	1.911	69	75375	4.536	ug/L	0.00
Spiked Amount	5.000	Range 65 - 130	Recovery	=	90.800%	
11) 1,1-Dichloroethene-d2	2.563	65	42367	4.429	ug/L	0.00
Spiked Amount	5.000	Range 60 - 125	Recovery	=	88.600%	
20) 2-Butanone-d5	4.621	46	200917	46.488	ug/L	0.00
Spiked Amount	50.000	Range 40 - 130	Recovery	=	92.980%	
24) Chloroform-d	5.055	84	188853	4.505	ug/L	0.00
Spiked Amount	5.000	Range 70 - 125	Recovery	=	90.000%	
26) 1,2-Dichloroethane-d4	5.695	65	94174	4.861	ug/L	0.00
Spiked Amount	5.000	Range 70 - 130	Recovery	=	97.200%	
32) Benzene-d6	5.721	84	372384	4.464	ug/L	0.00
Spiked Amount	5.000	Range 70 - 125	Recovery	=	89.200%	
36) 1,2-Dichloropropane-d6	6.685	67	117689	4.681	ug/L	0.00
Spiked Amount	5.000	Range 60 - 140	Recovery	=	93.600%	
41) Toluene-d8	7.894	98	328551	4.460	ug/L	0.00
Spiked Amount	5.000	Range 70 - 130	Recovery	=	89.200%	
43) trans-1,3-Dichloroprop...	8.177	79	43463	4.507	ug/L	0.00
Spiked Amount	5.000	Range 55 - 130	Recovery	=	90.200%	
46) 2-Hexanone-d5	8.631	63	172483	45.518	ug/L	0.00
Spiked Amount	50.000	Range 45 - 130	Recovery	=	91.040%	
56) 1,1,2,2-Tetrachloroeth...	10.753	84	83327	4.638	ug/L	0.00
Spiked Amount	5.000	Range 65 - 120	Recovery	=	92.800%	
66) 1,2-Dichlorobenzene-d4	12.190	152	104536	4.713	ug/L	0.00
Spiked Amount	5.000	Range 80 - 120	Recovery	=	94.200%	
Target Compounds						
35) Methylcyclohexane	6.685	83	27228	0.866	ug/L #	18
37) 1,2-Dichloropropane	6.685	63	12683	0.609	ug/L #	88
48) 2-Hexanone	8.688	43	7026	0.873	ug/L #	90
61) 1,2,3-Trichloropropane	11.807	75	15894	1.543	ug/L #	68

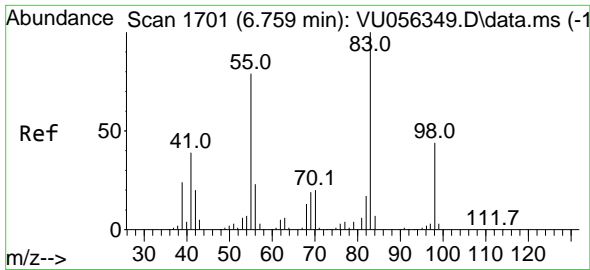
(#) = qualifier out of range (m) = manual integration (+) = signals summed

Data Path : Z:\voasrv\HPCHEM1\MSVOA\_U\Data\VU111523\  
 Data File : VU056350.D  
 Acq On : 15 Nov 2023 12:38  
 Operator : MD/SY  
 Sample : VW1115WBL01  
 Misc : 25mL/MSVOA\_U/WATER  
 ALS Vial : 1 Sample Multiplier: 1

Instrument :  
 MSVOA\_U  
 ClientSampleId :

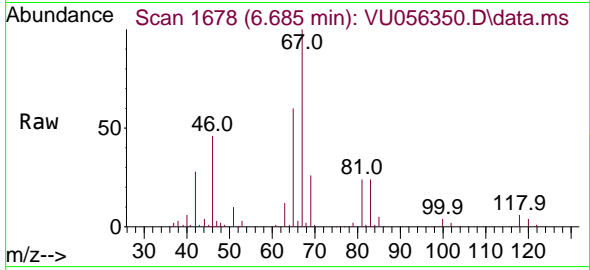
Quant Time: Nov 16 04:37:51 2023  
 Quant Method : Z:\voasrv\HPCHEM1\MSVOA\_U\Method\SFAMUTR111323WMA.M  
 Quant Title : TRACE VOA SFAM1.0  
 QLast Update : Thu Nov 16 04:37:29 2023  
 Response via : Initial Calibration



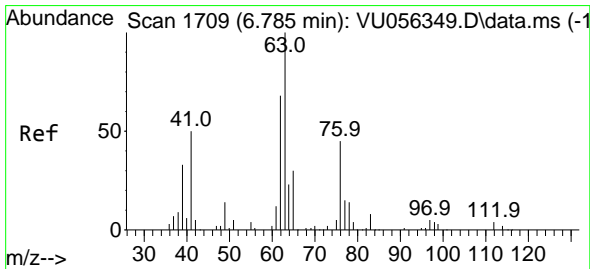
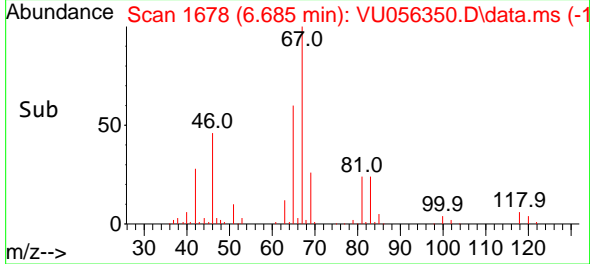
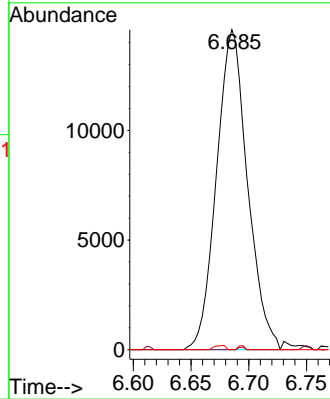


#35  
 Methylcyclohexane  
 Concen: 0.866 ug/L  
 RT: 6.685 min Scan# 1678  
 Delta R.T. -0.074 min  
 Lab File: VU056350.D  
 Acq: 15 Nov 2023 12:38

Instrument : MSVOA\_U  
 ClientSampleId :

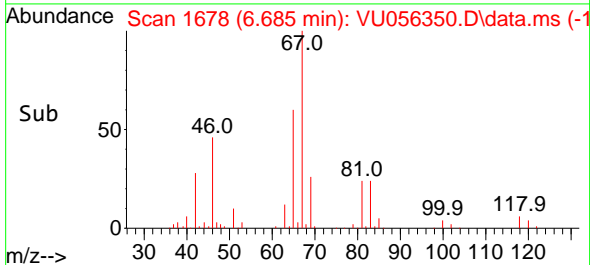
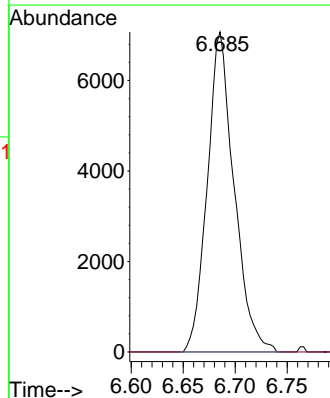
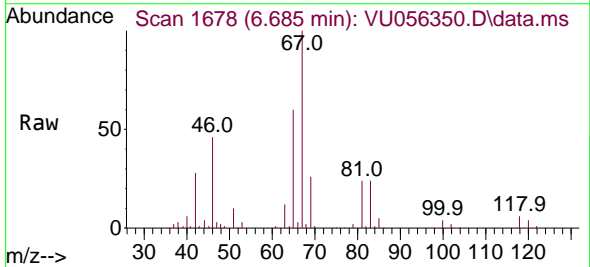


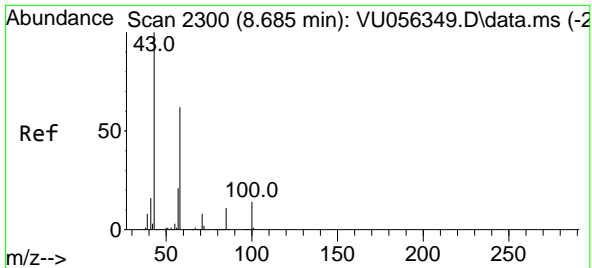
Tgt Ion: 83 Resp: 27228  
 Ion Ratio Lower Upper  
 83 100  
 55 0.0 62.9 94.3#  
 98 0.5 35.3 52.9#



#37  
 1,2-Dichloropropane  
 Concen: 0.609 ug/L  
 RT: 6.685 min Scan# 1678  
 Delta R.T. -0.100 min  
 Lab File: VU056350.D  
 Acq: 15 Nov 2023 12:38

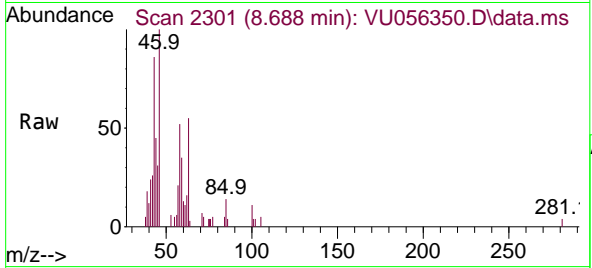
Tgt Ion: 63 Resp: 12683  
 Ion Ratio Lower Upper  
 63 100  
 112 0.2 3.2 4.8#





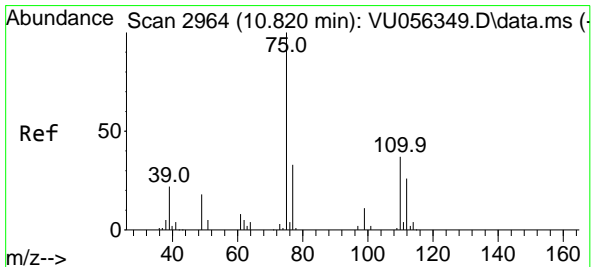
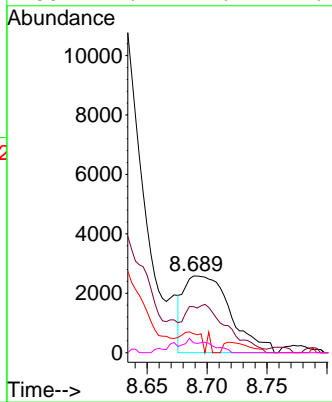
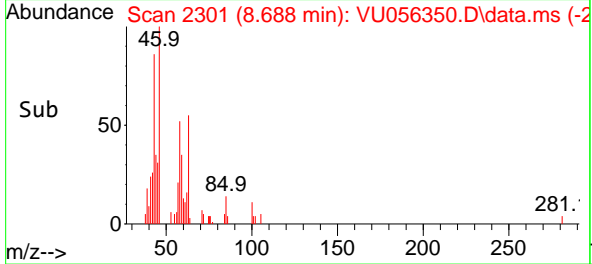
#48  
 2-Hexanone  
 Concen: 0.873 ug/L  
 RT: 8.688 min Scan# 21  
 Delta R.T. 0.003 min  
 Lab File: VU056350.D  
 Acq: 15 Nov 2023 12:38

Instrument :  
 MSVOA\_U  
 ClientSampleId :

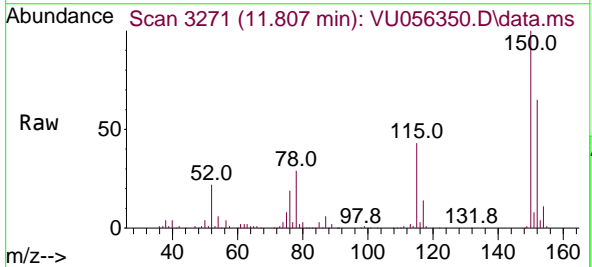


Tgt Ion: 43 Resp: 7026

Ion	Ratio	Lower	Upper
43	100		
58	56.8	48.7	73.1
57	13.9	16.8	25.2#
100	1.7	9.9	14.9#



#61  
 1,2,3-Trichloropropane  
 Concen: 1.543 ug/L  
 RT: 11.807 min Scan# 3271  
 Delta R.T. 0.987 min  
 Lab File: VU056350.D  
 Acq: 15 Nov 2023 12:38



Tgt Ion: 75 Resp: 15894

Ion	Ratio	Lower	Upper
75	100		
110	3.0	30.4	45.6#
77	32.7	27.0	40.6

