

Data Path : Z:\voasrv\HPCHEM1\MSVOA_U\Data\VU111523\
 Data File : VU056393.D
 Acq On : 16 Nov 2023 07:24
 Operator : MD/SY
 Sample : VSTDCCC005
 Misc : 25mL/MSVOA_U/WATER
 ALS Vial : 48 Sample Multiplier: 1

Instrument :
 MSVOA_U
 ClientSampleId :

Quant Time: Nov 16 07:37:28 2023
 Quant Method : Z:\voasrv\HPCHEM1\MSVOA_U\Method\SFAMUTR111323WMA.M
 Quant Title : TRACE VOA SFAM1.0
 QLast Update : Thu Nov 16 05:41:06 2023
 Response via : Initial Calibration

Compound	R.T.	QIon	Response	Conc	Units	Dev(Min)
Internal Standards						
1) 1,4-Difluorobenzene	6.245	114	270727	5.000	ug/L	0.00
28) Chlorobenzene-d5	9.412	117	270582	5.000	ug/L	0.00
58) 1,4-Dichlorobenzene-d4	11.807	152	136377	5.000	ug/L	0.00
System Monitoring Compounds						
4) Vinyl Chloride-d3	1.595	65	92409	4.563	ug/L	0.00
Spiked Amount	5.000	Range 40 - 130	Recovery	=	91.200%	
7) Chloroethane-d5	1.911	69	73222	4.716	ug/L	0.00
Spiked Amount	5.000	Range 65 - 130	Recovery	=	94.400%	
11) 1,1-Dichloroethene-d2	2.563	65	40854	4.572	ug/L	0.00
Spiked Amount	5.000	Range 60 - 125	Recovery	=	91.400%	
20) 2-Butanone-d5	4.621	46	221366	54.824	ug/L	0.00
Spiked Amount	50.000	Range 40 - 130	Recovery	=	109.640%	
24) Chloroform-d	5.058	84	207724	5.303	ug/L	0.00
Spiked Amount	5.000	Range 70 - 125	Recovery	=	106.000%	
26) 1,2-Dichloroethane-d4	5.698	65	92244	5.097	ug/L	0.00
Spiked Amount	5.000	Range 70 - 130	Recovery	=	102.000%	
32) Benzene-d6	5.721	84	364939	4.527	ug/L	0.00
Spiked Amount	5.000	Range 70 - 125	Recovery	=	90.600%	
36) 1,2-Dichloropropane-d6	6.685	67	122635	5.047	ug/L	0.00
Spiked Amount	5.000	Range 60 - 140	Recovery	=	101.000%	
41) Toluene-d8	7.894	98	323159	4.539	ug/L	0.00
Spiked Amount	5.000	Range 70 - 130	Recovery	=	90.800%	
43) trans-1,3-Dichloroprop...	8.174	79	42119	4.520	ug/L	0.00
Spiked Amount	5.000	Range 55 - 130	Recovery	=	90.400%	
46) 2-Hexanone-d5	8.627	63	205144	56.020	ug/L	0.00
Spiked Amount	50.000	Range 45 - 130	Recovery	=	112.040%	
56) 1,1,2,2-Tetrachloroeth...	10.749	84	93015	5.358	ug/L	0.00
Spiked Amount	5.000	Range 65 - 120	Recovery	=	107.200%	
66) 1,2-Dichlorobenzene-d4	12.187	152	119741	4.753	ug/L	0.00
Spiked Amount	5.000	Range 80 - 120	Recovery	=	95.000%	
Target Compounds						
2) Dichlorodifluoromethane	1.383	85	111782	5.211	ug/L	98
3) Chloromethane	1.518	50	124034	5.658	ug/L	98
5) Vinyl chloride	1.602	62	118305	5.602	ug/L	99
6) Bromomethane	1.856	94	60688	5.677	ug/L	97
8) Chloroethane	1.933	64	70514	5.466	ug/L	95
9) Trichlorofluoromethane	2.136	101	167691	5.510	ug/L	100
10) 1,1,2-Trichloro-1,2,2-...	2.579	101	96227	5.326	ug/L	99
12) 1,1-Dichloroethene	2.576	96	91253	5.506	ug/L	93
13) Acetone	2.634	43	132035	38.394	ug/L	98
14) Carbon disulfide	2.792	76	269921	5.005	ug/L	98
15) Methyl Acetate	2.949	43	34220	5.592	ug/L	100
16) Methylene chloride	3.042	84	108174	4.932	ug/L	98
17) Methyl tert-butyl Ether	3.354	73	229688	5.704	ug/L	98
18) trans-1,2-Dichloroethene	3.348	96	95012	5.572	ug/L	98
19) 1,1-Dichloroethane	3.862	63	193888	5.740	ug/L	99
21) 2-Butanone	4.701	43	213372	47.815	ug/L	96
22) cis-1,2-Dichloroethene	4.660	96	109736	5.675	ug/L	98
23) Bromochloromethane	4.968	128	49051	6.163	ug/L	97
25) Chloroform	5.081	83	287692	7.862	ug/L	99

Data Path : Z:\voasrv\HPCHEM1\MSVOA_U\Data\VU111523\
 Data File : VU056393.D
 Acq On : 16 Nov 2023 07:24
 Operator : MD/SY
 Sample : VSTDCCC005
 Misc : 25mL/MSVOA_U/WATER
 ALS Vial : 48 Sample Multiplier: 1

Instrument :
 MSVOA_U
 ClientSampleId :

Quant Time: Nov 16 07:37:28 2023
 Quant Method : Z:\voasrv\HPCHEM1\MSVOA_U\Method\SFAMUTR111323WMA.M
 Quant Title : TRACE VOA SFAM1.0
 QLast Update : Thu Nov 16 05:41:06 2023
 Response via : Initial Calibration

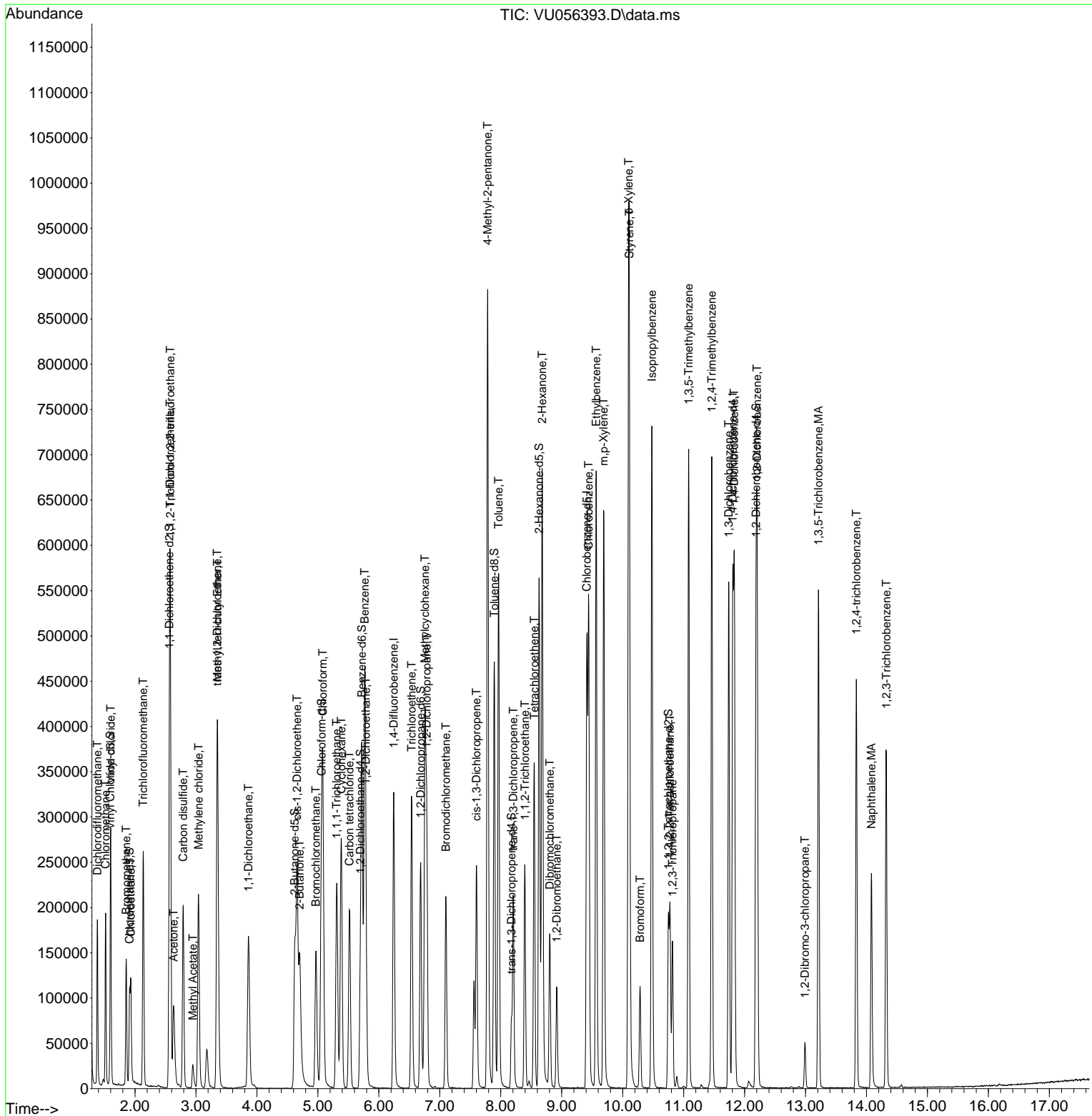
Compound	R.T.	QIon	Response	Conc	Units	Dev(Min)
27) 1,2-Dichloroethane	5.788	62	119195	5.737	ug/L	98
29) 1,1,1-Trichloroethane	5.309	97	167962	5.408	ug/L	99
30) Cyclohexane	5.383	56	138687	4.705	ug/L	99
31) Carbon tetrachloride	5.518	117	141918	5.320	ug/L	95
33) Benzene	5.769	78	413560	5.357	ug/L	100
34) Trichloroethene	6.537	95	114498	5.443	ug/L	97
35) Methylcyclohexane	6.759	83	150495	4.955	ug/L	99
37) 1,2-Dichloropropane	6.785	63	113605	5.642	ug/L	99
38) Bromodichloromethane	7.100	83	139727	5.376	ug/L	99
39) cis-1,3-Dichloropropene	7.602	75	151163	5.109	ug/L	96
40) 4-Methyl-2-pentanone	7.785	43	552100	55.318	ug/L	99
42) Toluene	7.965	91	426874	5.340	ug/L	99
44) trans-1,3-Dichloropropene	8.206	75	124272	5.269	ug/L	100
45) 1,1,2-Trichloroethane	8.396	97	78020	5.818	ug/L	95
47) Tetrachloroethene	8.550	164	76289	5.378	ug/L	97
48) 2-Hexanone	8.679	43	428265	55.080	ug/L	99
49) Dibromochloromethane	8.804	129	87232	5.721	ug/L	99
50) 1,2-Dibromoethane	8.917	107	72014	5.689	ug/L	99
51) Chlorobenzene	9.441	112	284758	5.544	ug/L	99
52) Ethylbenzene	9.566	91	493903	5.564	ug/L	100
53) m,p-Xylene	9.688	106	180837	5.542	ug/L	96
54) o-Xylene	10.097	106	179782	5.672	ug/L	99
55) Styrene	10.110	104	305463	5.794	ug/L	97
57) 1,1,2,2-Tetrachloroethane	10.775	83	97766	5.971	ug/L #	97
59) Bromoform	10.286	173	50999	6.003	ug/L	99
60) Isopropylbenzene	10.479	105	482808	5.489	ug/L	99
61) 1,2,3-Trichloropropane	10.817	75	69661	5.953	ug/L	98
62) 1,3,5-Trimethylbenzene	11.084	105	386155	5.347	ug/L	99
63) 1,2,4-Trimethylbenzene	11.463	105	394657	5.537	ug/L	100
64) 1,3-Dichlorobenzene	11.740	146	222229	5.555	ug/L	99
65) 1,4-Dichlorobenzene	11.830	146	217246	5.413	ug/L	99
67) 1,2-Dichlorobenzene	12.206	146	205781	5.606	ug/L	98
68) 1,2-Dibromo-3-chloropr...	12.990	75	14056	5.624	ug/L	98
69) 1,3,5-Trichlorobenzene	13.212	180	160009	5.312	ug/L	98
70) 1,2,4-trichlorobenzene	13.833	180	131653	5.366	ug/L	98
71) Naphthalene	14.080	128	191190	5.158	ug/L	99
72) 1,2,3-Trichlorobenzene	14.325	180	107976	5.343	ug/L	100

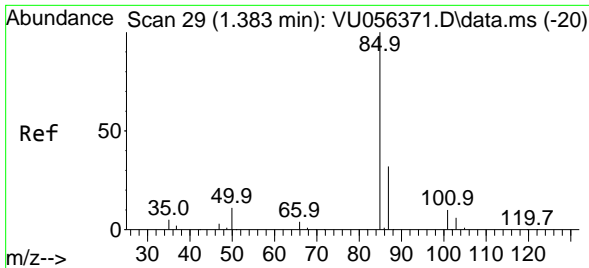
(#) = qualifier out of range (m) = manual integration (+) = signals summed

Data Path : Z:\voasrv\HPCHEM1\MSVOA_U\Data\VU111523\
Data File : VU056393.D
Acq On : 16 Nov 2023 07:24
Operator : MD/SY
Sample : VSTDC005
Misc : 25mL/MSVOA_U/WATER
ALS Vial : 48 Sample Multiplier: 1

Instrument :
MSVOA_U
ClientSampleId :

Quant Time: Nov 16 07:37:28 2023
Quant Method : Z:\voasrv\HPCHEM1\MSVOA_U\Method\SFAMUTR111323WMA.M
Quant Title : TRACE VOA SFAM1.0
QLast Update : Thu Nov 16 05:41:06 2023
Response via : Initial Calibration

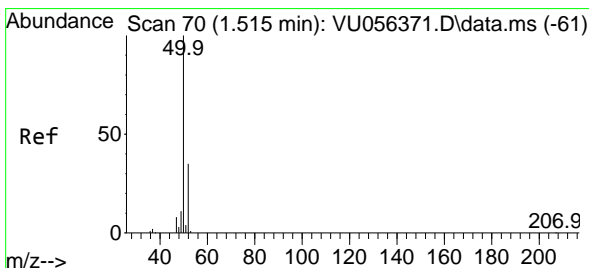
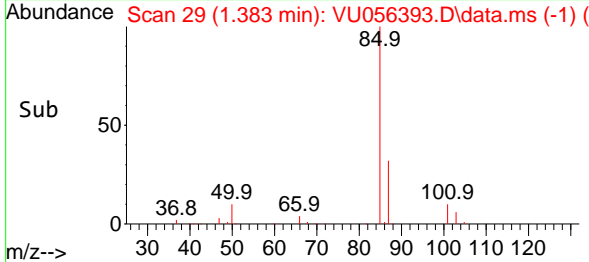
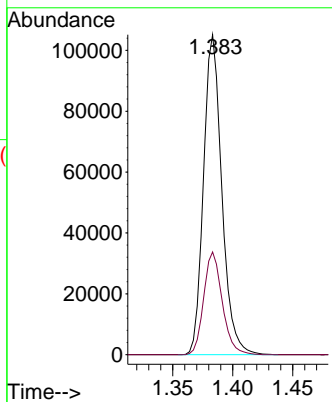
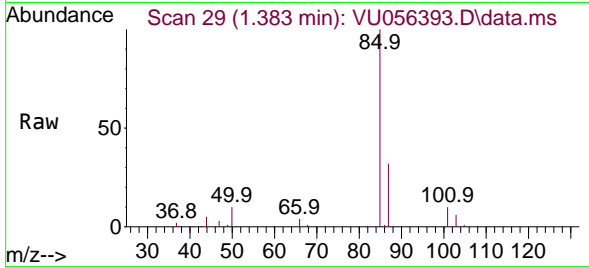




#2
 Dichlorodifluoromethane
 Concen: 5.211 ug/L
 RT: 1.383 min Scan# 29
 Delta R.T. -0.000 min
 Lab File: VU056393.D
 Acq: 16 Nov 2023 07:24

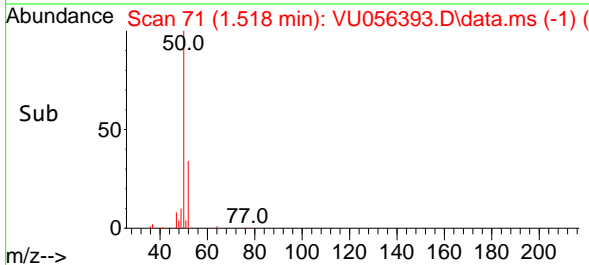
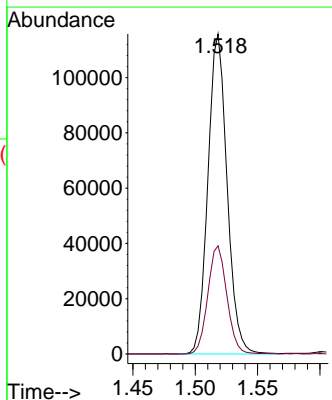
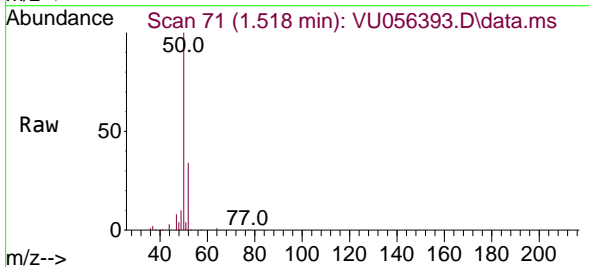
Instrument : MSVOA_U
 ClientSampleId :

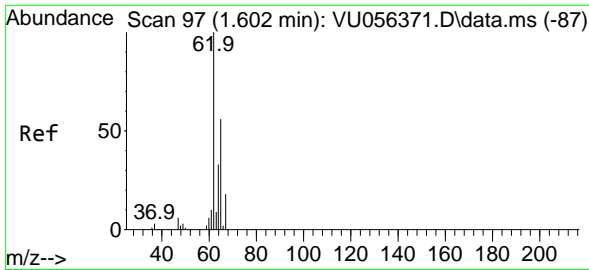
Tgt Ion: 85 Resp: 111782
 Ion Ratio Lower Upper
 85 100
 87 32.5 25.0 37.4



#3
 Chloromethane
 Concen: 5.658 ug/L
 RT: 1.518 min Scan# 71
 Delta R.T. 0.003 min
 Lab File: VU056393.D
 Acq: 16 Nov 2023 07:24

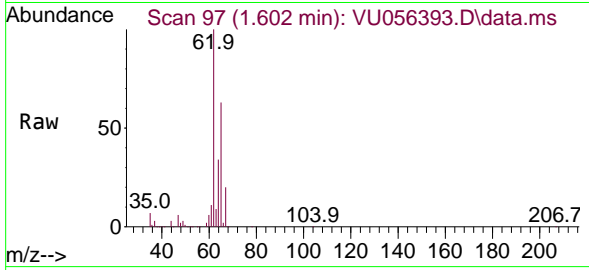
Tgt Ion: 50 Resp: 124034
 Ion Ratio Lower Upper
 50 100
 52 33.8 24.3 45.1



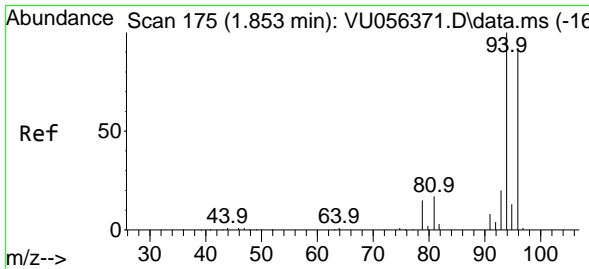
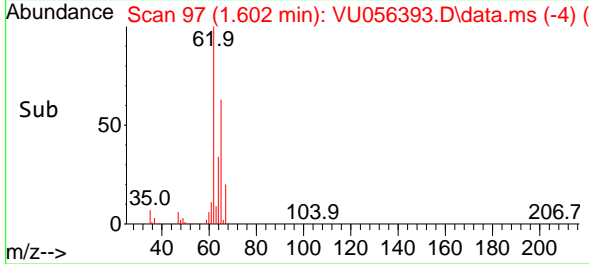
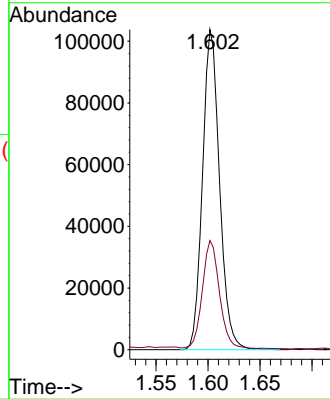


#5
 Vinyl chloride
 Concen: 5.602 ug/L
 RT: 1.602 min Scan# 91
 Delta R.T. -0.000 min
 Lab File: VU056393.D
 Acq: 16 Nov 2023 07:24

Instrument :
 MSVOA_U
 ClientSampleId :

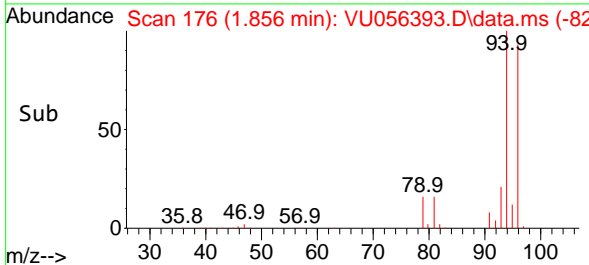
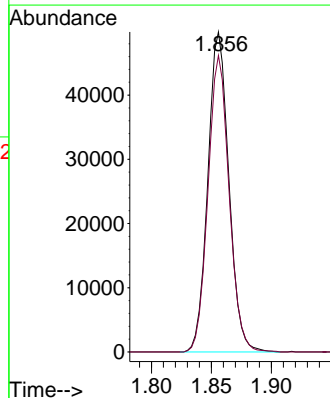
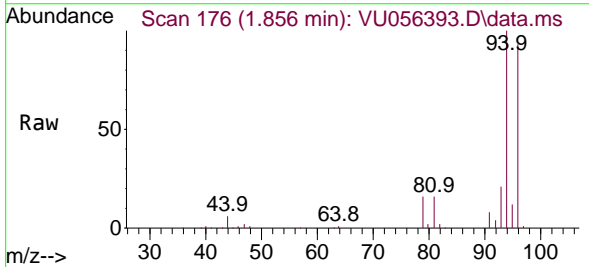


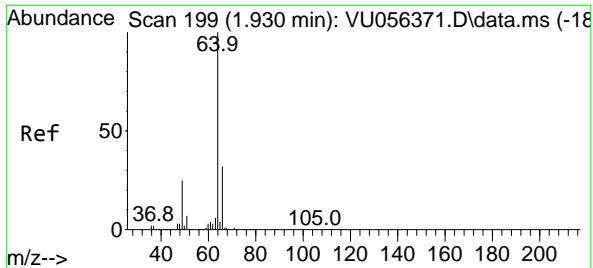
Tgt Ion: 62 Resp: 118305
 Ion Ratio Lower Upper
 62 100
 64 34.1 23.3 43.3



#6
 Bromomethane
 Concen: 5.677 ug/L
 RT: 1.856 min Scan# 176
 Delta R.T. 0.003 min
 Lab File: VU056393.D
 Acq: 16 Nov 2023 07:24

Tgt Ion: 94 Resp: 60688
 Ion Ratio Lower Upper
 94 100
 96 92.7 62.6 116.2

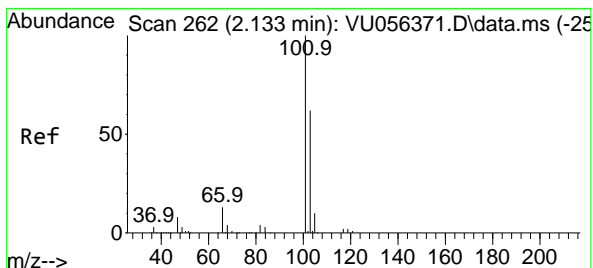
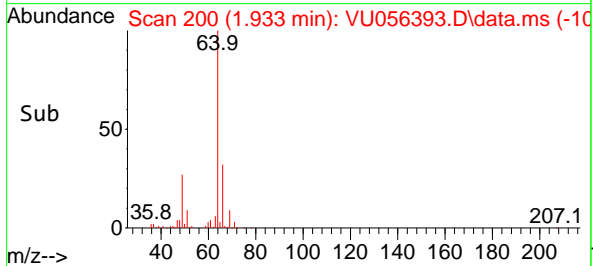
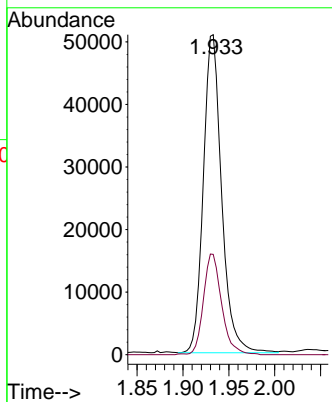
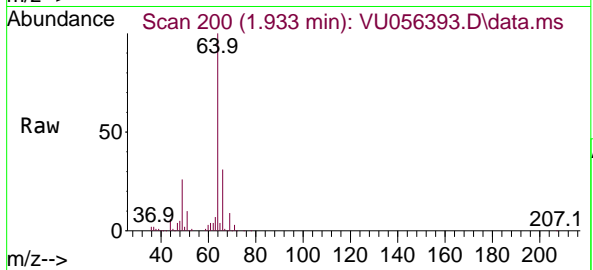




#8
 Chloroethane
 Concen: 5.466 ug/L
 RT: 1.933 min Scan# 20
 Delta R.T. 0.003 min
 Lab File: VU056393.D
 Acq: 16 Nov 2023 07:24

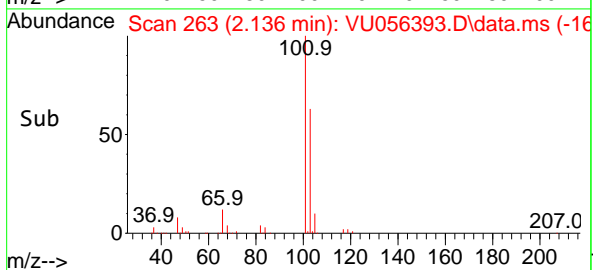
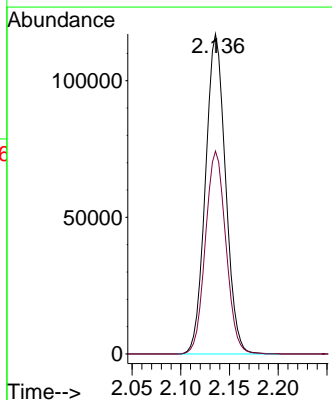
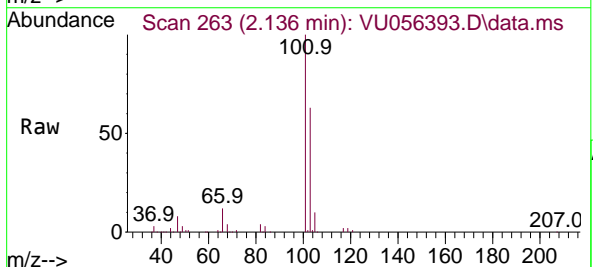
Instrument :
 MSVOA_U
 ClientSampleId :

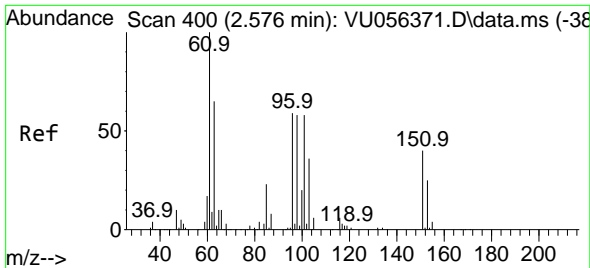
Tgt Ion: 64 Resp: 70514
 Ion Ratio Lower Upper
 64 100
 66 31.3 23.9 44.5



#9
 Trichlorofluoromethane
 Concen: 5.510 ug/L
 RT: 2.136 min Scan# 263
 Delta R.T. 0.003 min
 Lab File: VU056393.D
 Acq: 16 Nov 2023 07:24

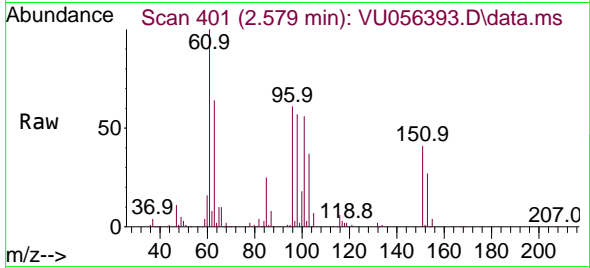
Tgt Ion: 101 Resp: 167691
 Ion Ratio Lower Upper
 101 100
 103 64.7 52.0 78.0



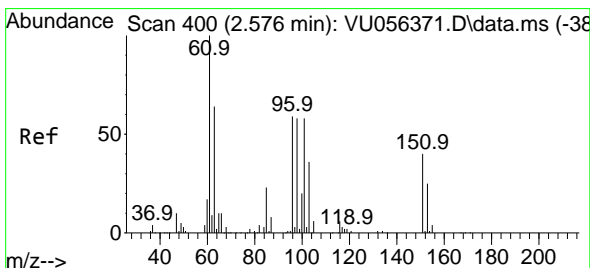
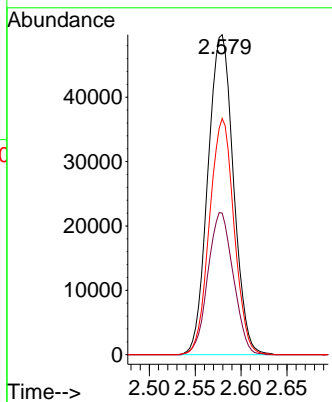
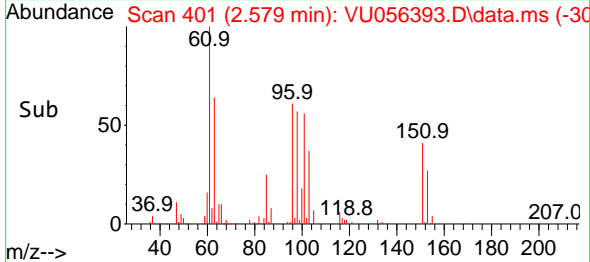


#10
 1,1,2-Trichloro-1,2,2-trifluoroethane
 Concen: 5.326 ug/L
 RT: 2.579 min Scan# 400
 Delta R.T. 0.003 min
 Lab File: VU056393.D
 Acq: 16 Nov 2023 07:24

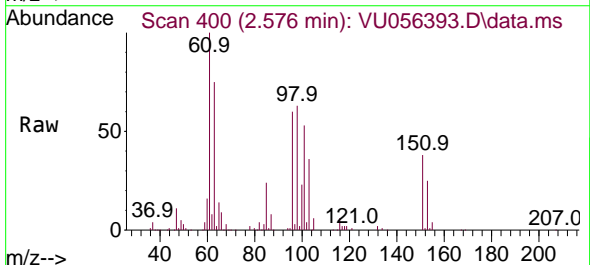
Instrument :
 MSVOA_U
 ClientSampleId :



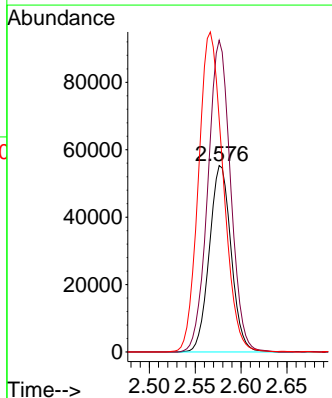
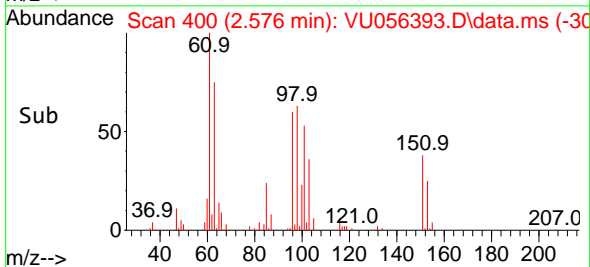
Tgt Ion: 101 Resp: 96227
 Ion Ratio Lower Upper
 101 100
 85 44.2 35.4 53.0
 151 71.2 58.0 87.0

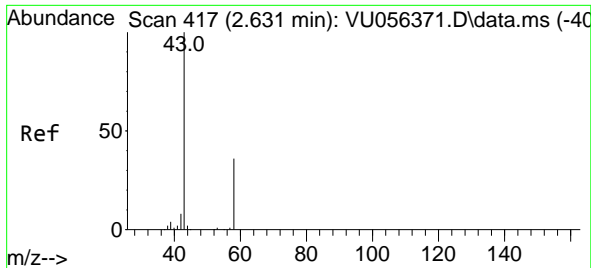


#12
 1,1-Dichloroethene
 Concen: 5.506 ug/L
 RT: 2.576 min Scan# 400
 Delta R.T. -0.000 min
 Lab File: VU056393.D
 Acq: 16 Nov 2023 07:24



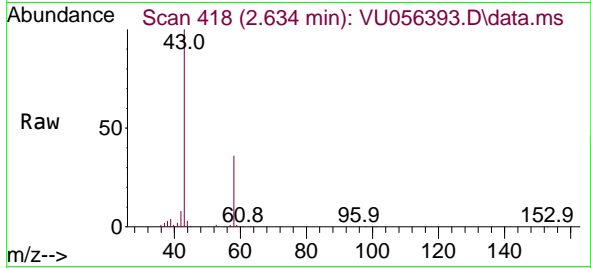
Tgt Ion: 96 Resp: 91253
 Ion Ratio Lower Upper
 96 100
 61 167.2 123.1 228.7
 63 125.1 93.3 173.3



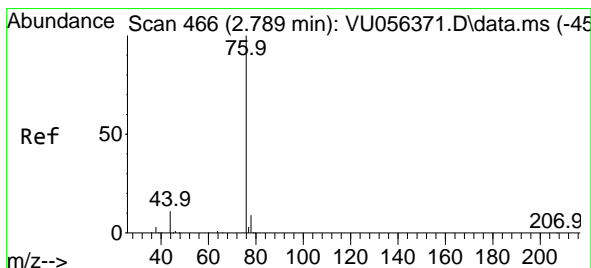
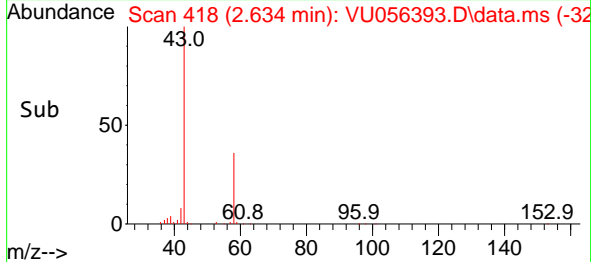
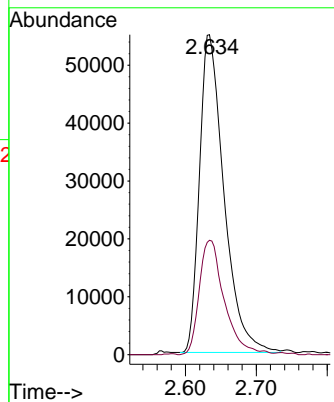


#13
 Acetone
 Concen: 38.394 ug/L
 RT: 2.634 min Scan# 41
 Delta R.T. 0.003 min
 Lab File: VU056393.D
 Acq: 16 Nov 2023 07:24

Instrument :
 MSVOA_U
 ClientSampleId :

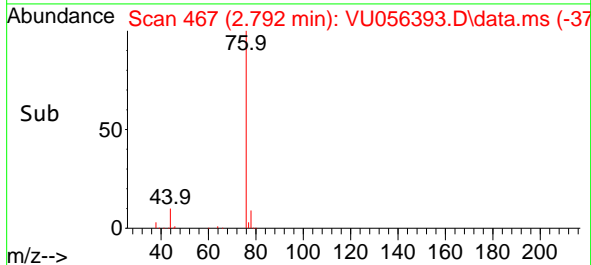
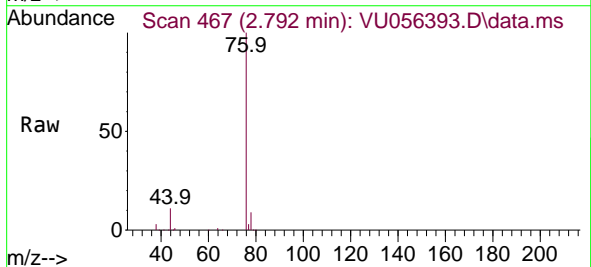
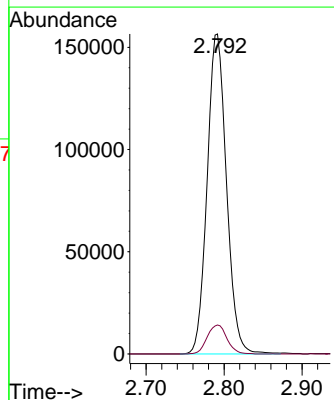


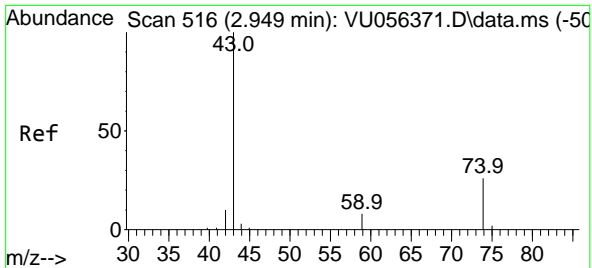
Tgt Ion: 43 Resp: 132035
 Ion Ratio Lower Upper
 43 100
 58 36.3 0.0 70.0



#14
 Carbon disulfide
 Concen: 5.005 ug/L
 RT: 2.792 min Scan# 467
 Delta R.T. 0.003 min
 Lab File: VU056393.D
 Acq: 16 Nov 2023 07:24

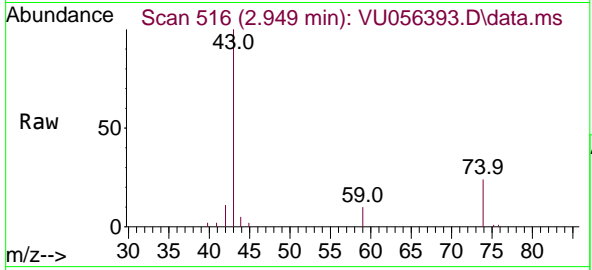
Tgt Ion: 76 Resp: 269921
 Ion Ratio Lower Upper
 76 100
 78 9.1 6.8 10.2



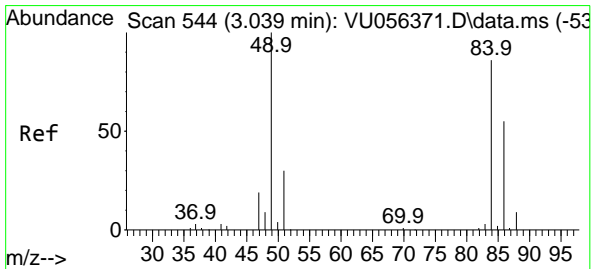
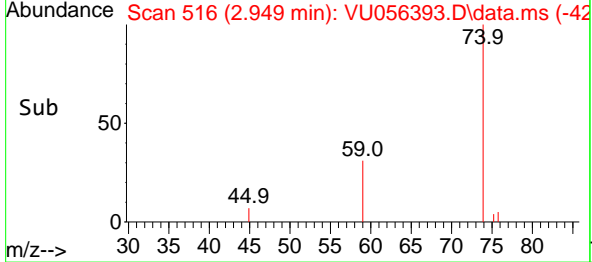
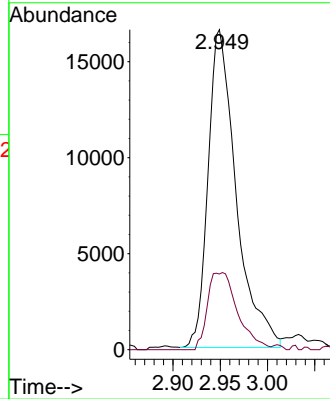


#15
Methyl Acetate
Concen: 5.592 ug/L
RT: 2.949 min Scan# 516
Delta R.T. -0.000 min
Lab File: VU056393.D
Acq: 16 Nov 2023 07:24

Instrument : MSVOA_U
ClientSampleId :

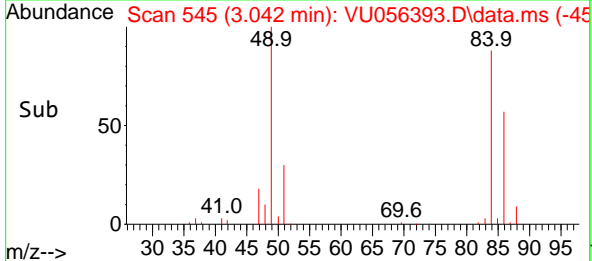
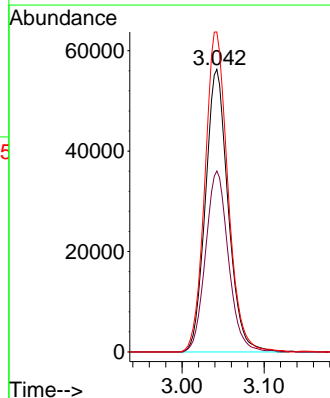
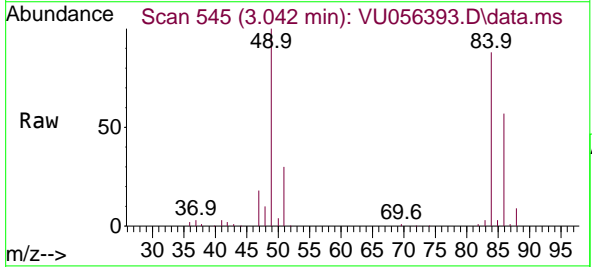


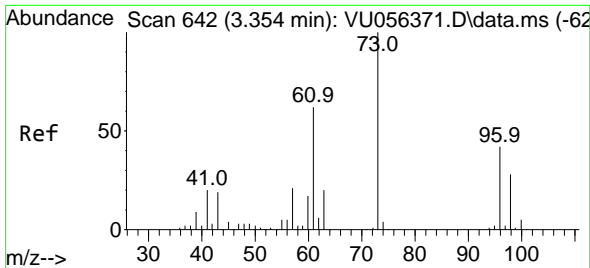
Tgt Ion: 43 Resp: 34220
Ion Ratio Lower Upper
43 100
74 26.0 20.6 31.0



#16
Methylene chloride
Concen: 4.932 ug/L
RT: 3.042 min Scan# 545
Delta R.T. 0.003 min
Lab File: VU056393.D
Acq: 16 Nov 2023 07:24

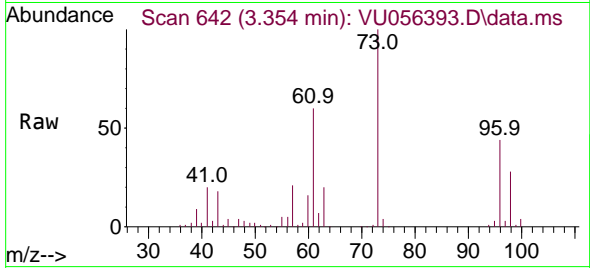
Tgt Ion: 84 Resp: 108174
Ion Ratio Lower Upper
84 100
86 64.0 44.7 83.1
49 113.3 81.8 152.0



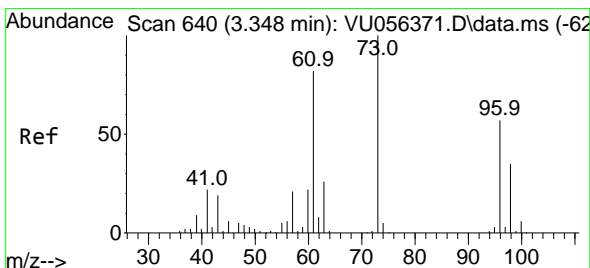
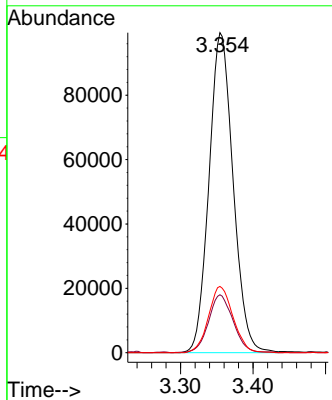
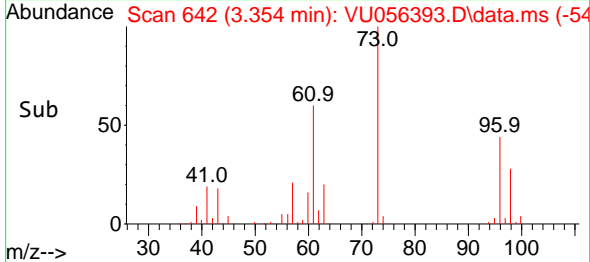


#17
 Methyl tert-butyl Ether
 Concen: 5.704 ug/L
 RT: 3.354 min Scan# 642
 Delta R.T. -0.000 min
 Lab File: VU056393.D
 Acq: 16 Nov 2023 07:24

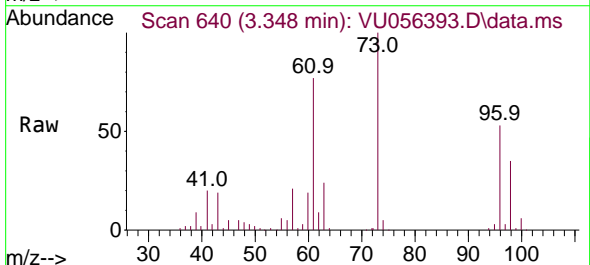
Instrument : MSVOA_U
 ClientSampleId :



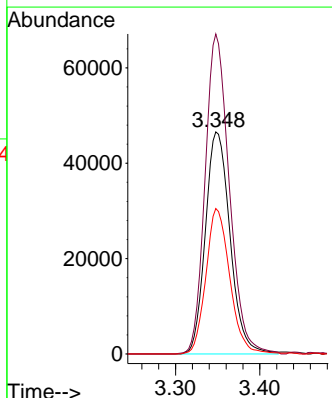
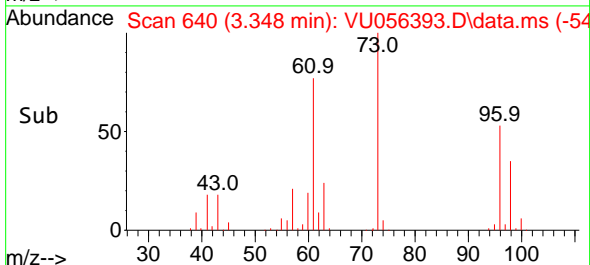
Tgt Ion: 73 Resp: 229688
 Ion Ratio Lower Upper
 73 100
 43 18.5 15.1 22.7
 57 21.1 17.8 26.8

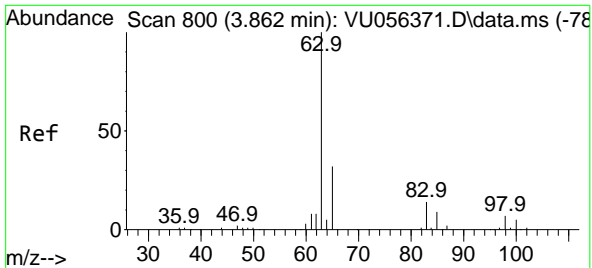


#18
 trans-1,2-Dichloroethene
 Concen: 5.572 ug/L
 RT: 3.348 min Scan# 640
 Delta R.T. -0.000 min
 Lab File: VU056393.D
 Acq: 16 Nov 2023 07:24



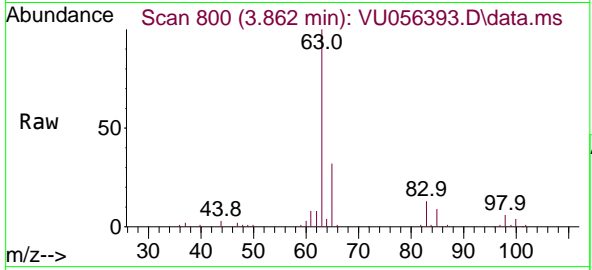
Tgt Ion: 96 Resp: 95012
 Ion Ratio Lower Upper
 96 100
 61 144.1 101.7 188.9
 98 65.5 43.0 80.0





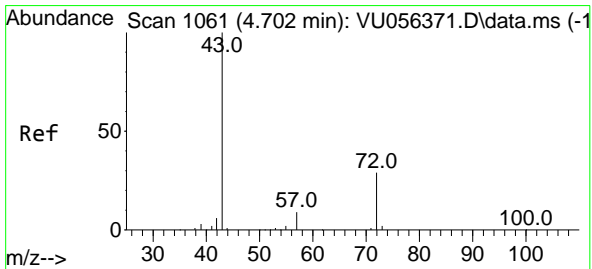
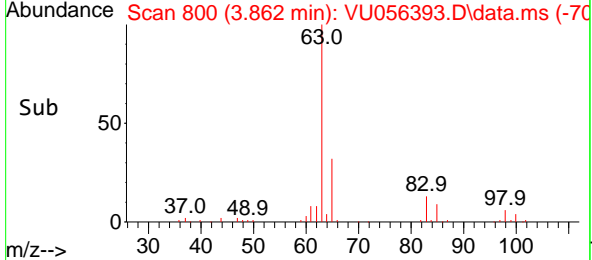
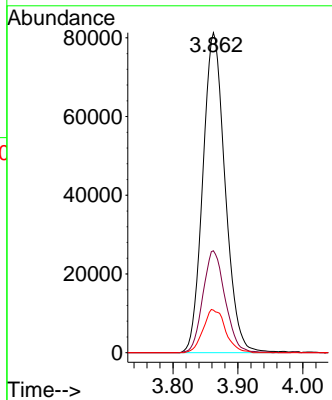
#19
 1,1-Dichloroethane
 Concen: 5.740 ug/L
 RT: 3.862 min Scan# 800
 Delta R.T. -0.000 min
 Lab File: VU056393.D
 Acq: 16 Nov 2023 07:24

Instrument : MSVOA_U
 ClientSampleId :



Tgt Ion: 63 Resp: 193888

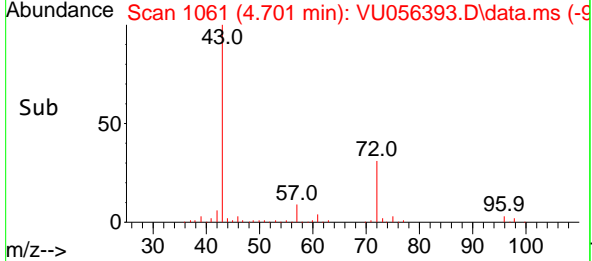
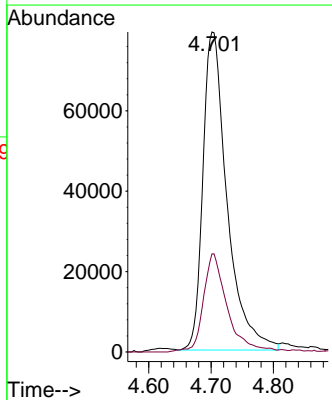
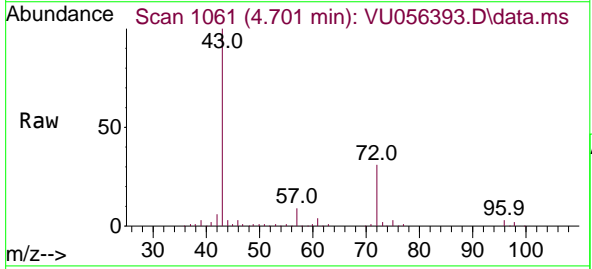
Ion	Ratio	Lower	Upper
63	100		
65	31.8	21.8	40.6
83	13.3	9.7	17.9

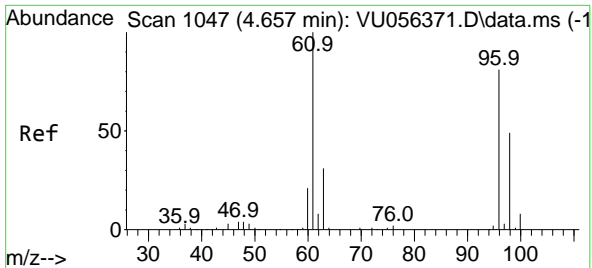


#21
 2-Butanone
 Concen: 47.815 ug/L
 RT: 4.701 min Scan# 1061
 Delta R.T. -0.000 min
 Lab File: VU056393.D
 Acq: 16 Nov 2023 07:24

Tgt Ion: 43 Resp: 213372

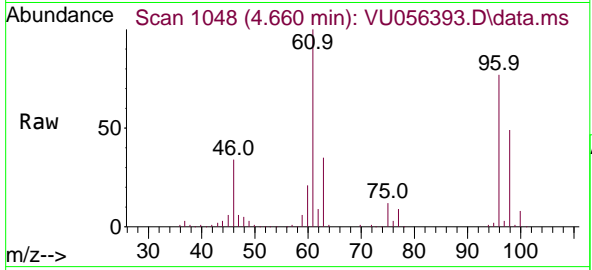
Ion	Ratio	Lower	Upper
43	100		
72	30.3	14.2	42.6



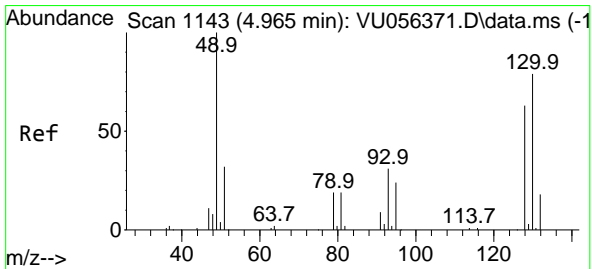
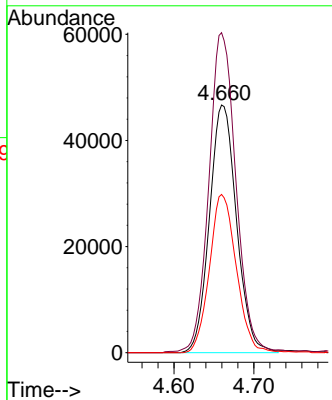
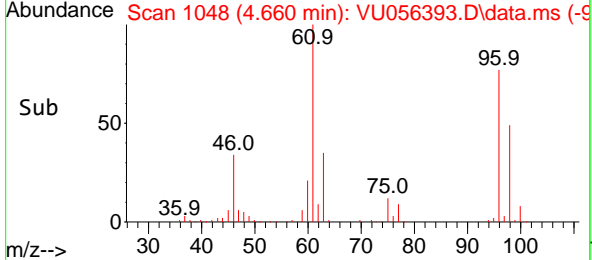


#22
 cis-1,2-Dichloroethene
 Concen: 5.675 ug/L
 RT: 4.660 min Scan# 1048
 Delta R.T. 0.003 min
 Lab File: VU056393.D
 Acq: 16 Nov 2023 07:24

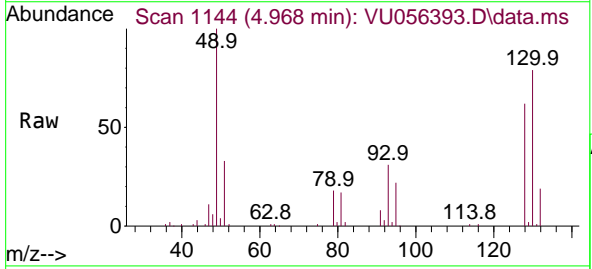
Instrument : MSVOA_U
 ClientSampleId :



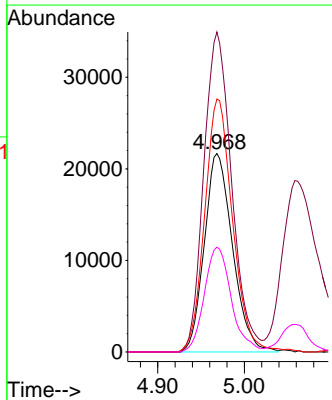
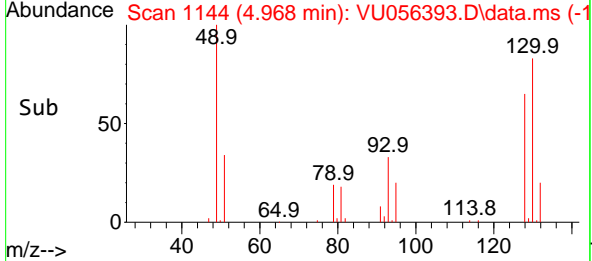
Tgt Ion: 96 Resp: 109736
 Ion Ratio Lower Upper
 96 100
 61 129.2 93.2 173.2
 98 63.9 44.8 83.2

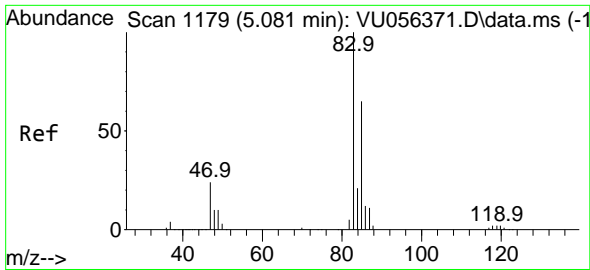


#23
 Bromochloromethane
 Concen: 6.163 ug/L
 RT: 4.968 min Scan# 1144
 Delta R.T. 0.003 min
 Lab File: VU056393.D
 Acq: 16 Nov 2023 07:24



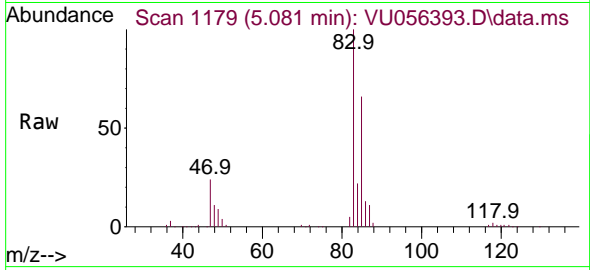
Tgt Ion: 128 Resp: 49051
 Ion Ratio Lower Upper
 128 100
 49 161.3 113.4 210.6
 130 127.5 84.8 157.6
 51 52.8 39.8 59.6



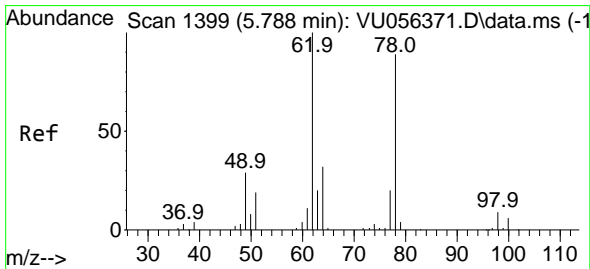
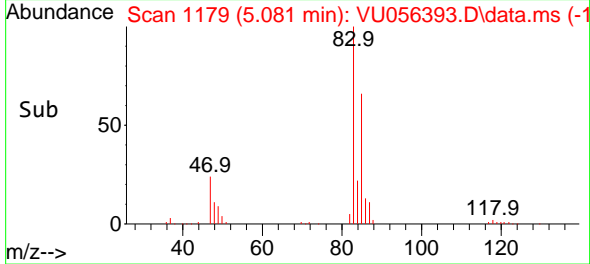
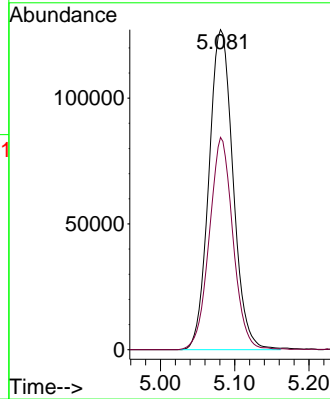


#25
 Chloroform
 Concen: 7.862 ug/L
 RT: 5.081 min Scan# 1179
 Delta R.T. -0.000 min
 Lab File: VU056393.D
 Acq: 16 Nov 2023 07:24

Instrument :
 MSVOA_U
 ClientSampleId :

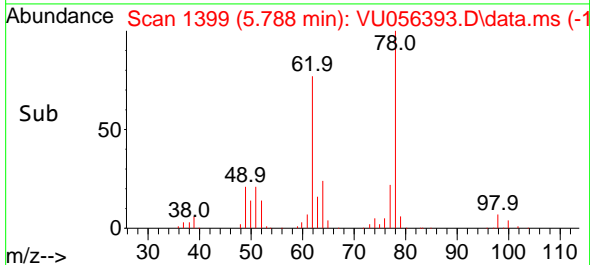
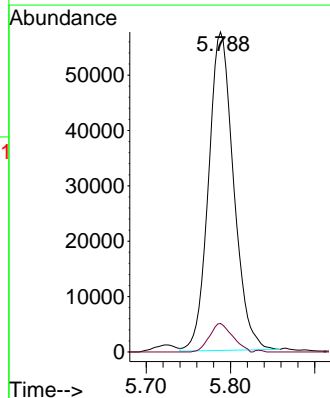
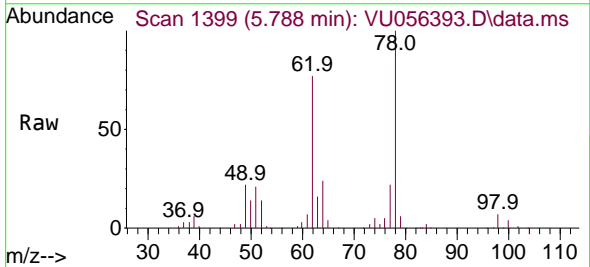


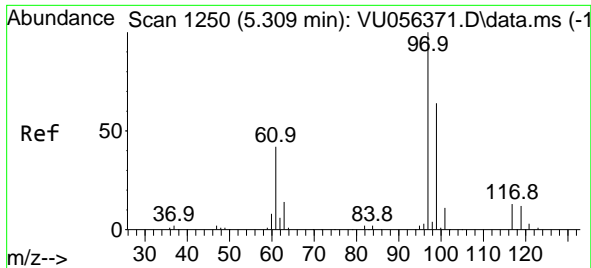
Tgt Ion: 83 Resp: 287692
 Ion Ratio Lower Upper
 83 100
 85 66.3 47.0 87.2



#27
 1,2-Dichloroethane
 Concen: 5.737 ug/L
 RT: 5.788 min Scan# 1399
 Delta R.T. -0.000 min
 Lab File: VU056393.D
 Acq: 16 Nov 2023 07:24

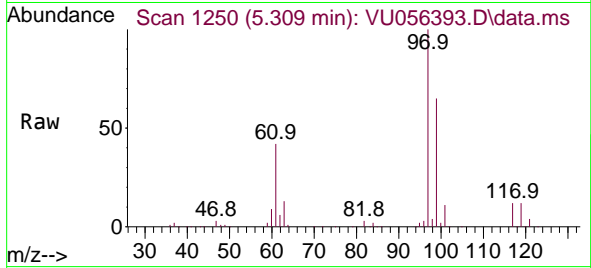
Tgt Ion: 62 Resp: 119195
 Ion Ratio Lower Upper
 62 100
 98 8.9 6.6 10.0



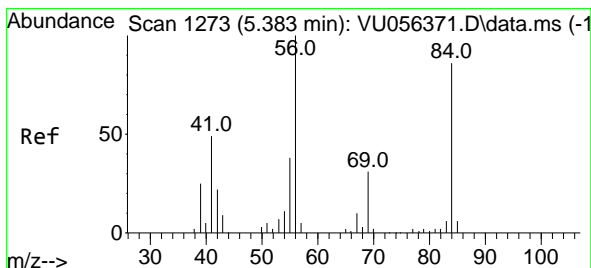
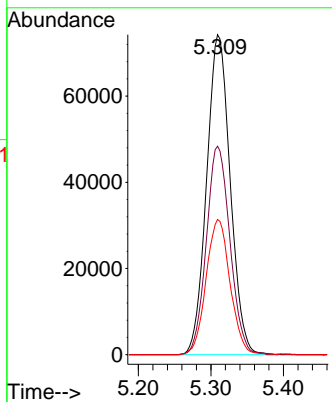
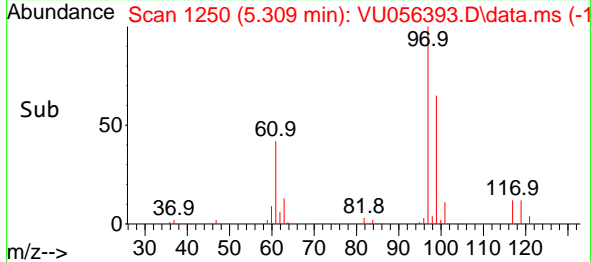


#29
 1,1,1-Trichloroethane
 Concen: 5.408 ug/L
 RT: 5.309 min Scan# 11
 Delta R.T. -0.000 min
 Lab File: VU056393.D
 Acq: 16 Nov 2023 07:24

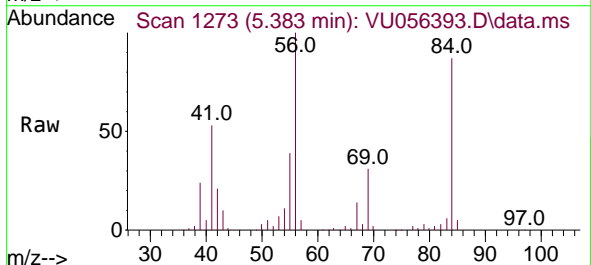
Instrument :
 MSVOA_U
 ClientSampleId :



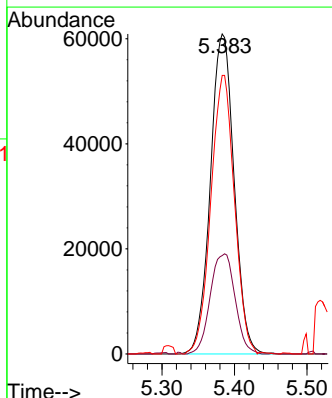
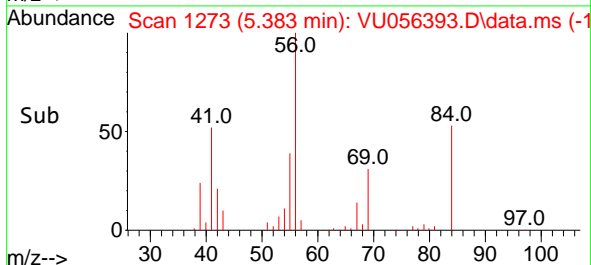
Tgt Ion: 97 Resp: 167962
 Ion Ratio Lower Upper
 97 100
 99 65.3 51.6 77.4
 61 42.9 34.3 51.5

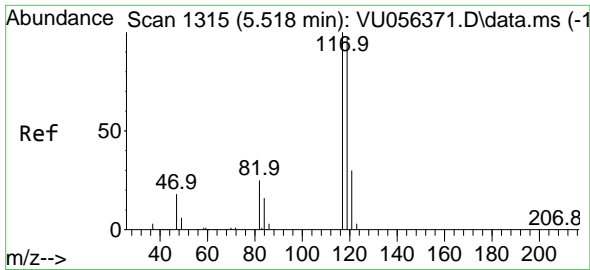


#30
 Cyclohexane
 Concen: 4.705 ug/L
 RT: 5.383 min Scan# 1273
 Delta R.T. -0.000 min
 Lab File: VU056393.D
 Acq: 16 Nov 2023 07:24



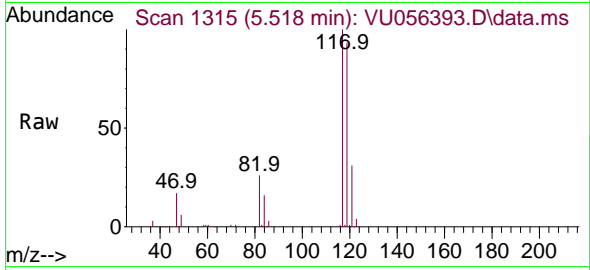
Tgt Ion: 56 Resp: 138687
 Ion Ratio Lower Upper
 56 100
 69 32.7 25.4 38.2
 84 86.3 68.6 103.0



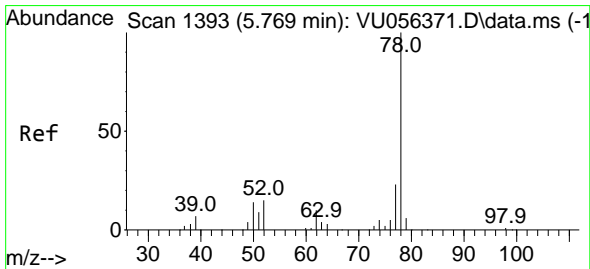
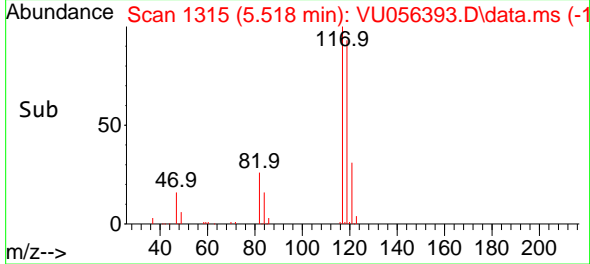
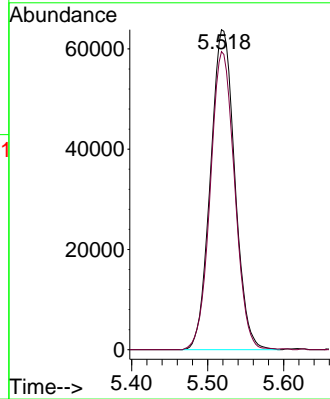


#31
 Carbon tetrachloride
 Concen: 5.320 ug/L
 RT: 5.518 min Scan# 1117
 Delta R.T. -0.000 min
 Lab File: VU056393.D
 Acq: 16 Nov 2023 07:24

Instrument : MSVOA_U
 ClientSampleId :

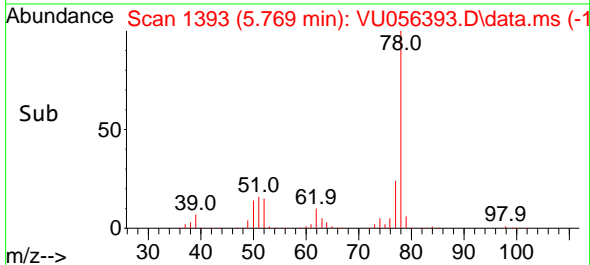
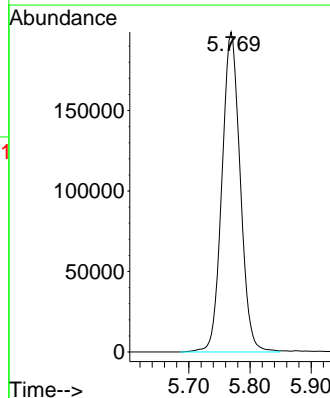
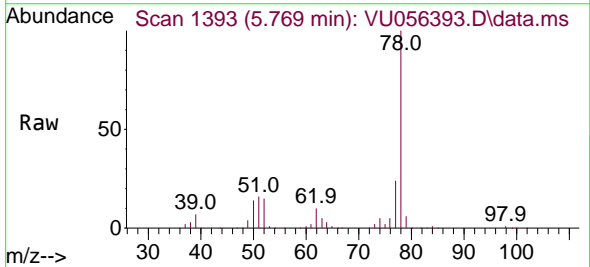


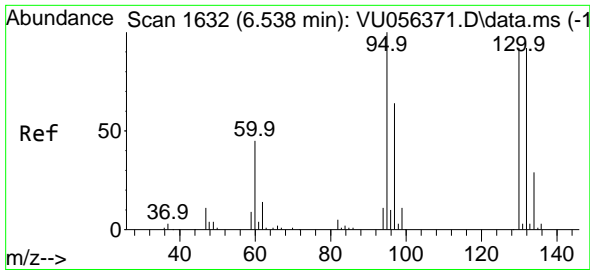
Tgt Ion:117 Resp: 141918
 Ion Ratio Lower Upper
 117 100
 119 92.8 78.1 117.1



#33
 Benzene
 Concen: 5.357 ug/L
 RT: 5.769 min Scan# 1393
 Delta R.T. -0.000 min
 Lab File: VU056393.D
 Acq: 16 Nov 2023 07:24

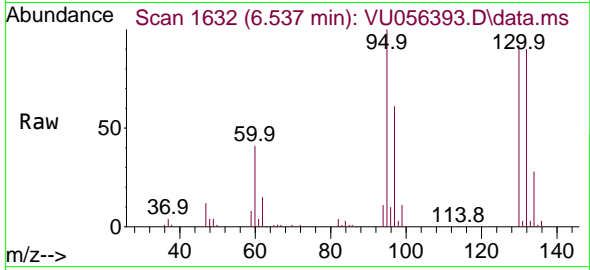
Tgt Ion: 78 Resp: 413560



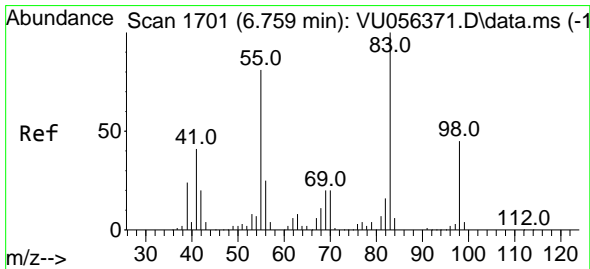
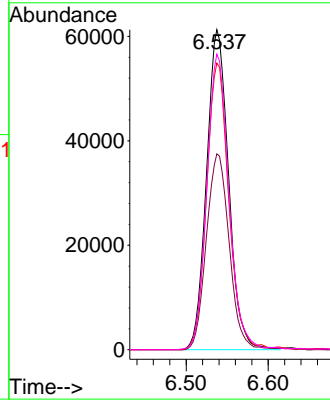
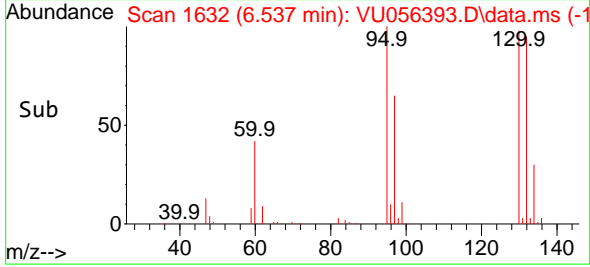


#34
 Trichloroethene
 Concen: 5.443 ug/L
 RT: 6.537 min Scan# 1632
 Delta R.T. -0.000 min
 Lab File: VU056393.D
 Acq: 16 Nov 2023 07:24

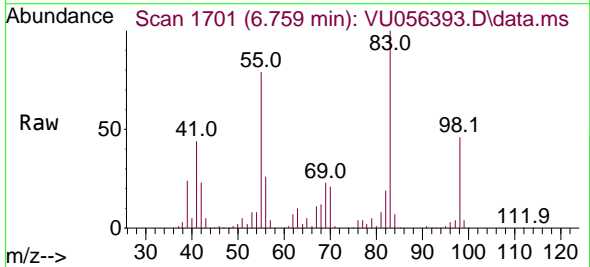
Instrument : MSVOA_U
 ClientSampleId :



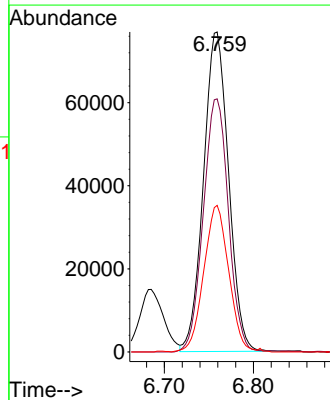
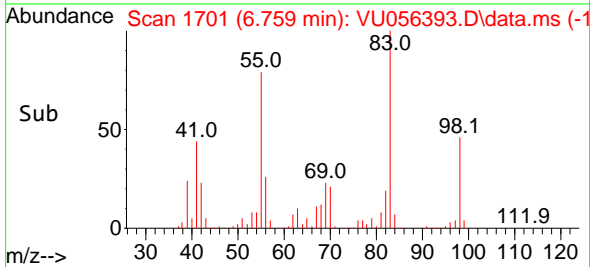
Tgt Ion: 95 Resp: 114498
 Ion Ratio Lower Upper
 95 100
 97 61.2 46.5 86.3
 132 89.5 62.0 115.2
 130 92.3 66.3 123.1

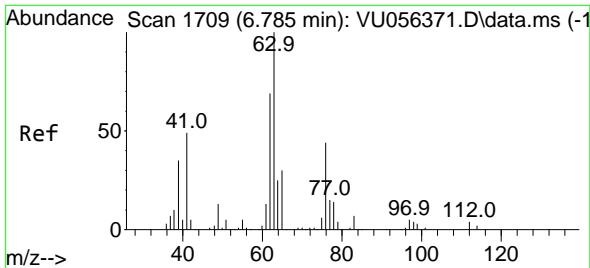


#35
 Methylcyclohexane
 Concen: 4.955 ug/L
 RT: 6.759 min Scan# 1701
 Delta R.T. -0.000 min
 Lab File: VU056393.D
 Acq: 16 Nov 2023 07:24



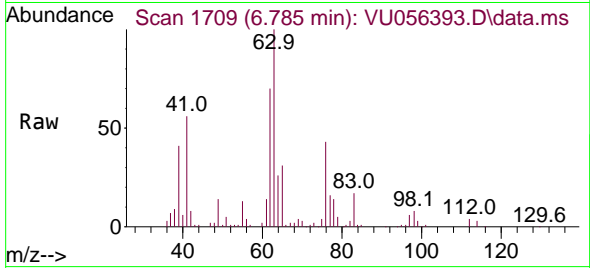
Tgt Ion: 83 Resp: 150495
 Ion Ratio Lower Upper
 83 100
 55 79.2 62.9 94.3
 98 45.6 35.3 52.9



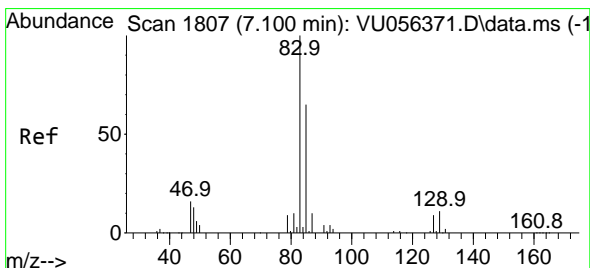
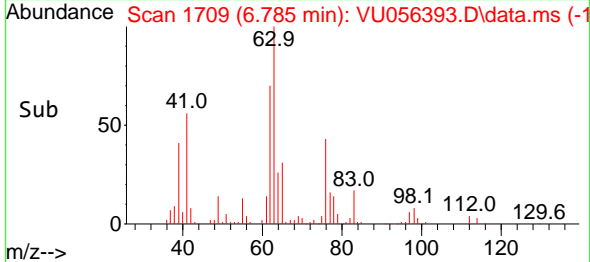
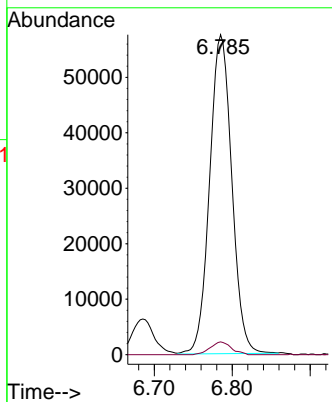


#37
 1,2-Dichloropropane
 Concen: 5.642 ug/L
 RT: 6.785 min Scan# 1709
 Delta R.T. -0.000 min
 Lab File: VU056393.D
 Acq: 16 Nov 2023 07:24

Instrument : MSVOA_U
 ClientSampleId :

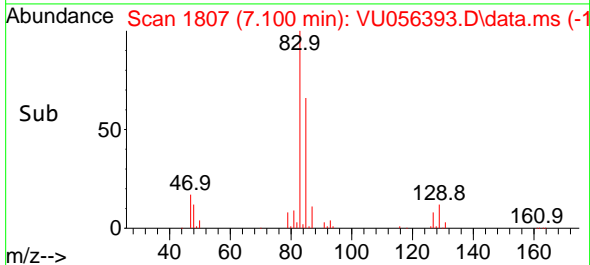
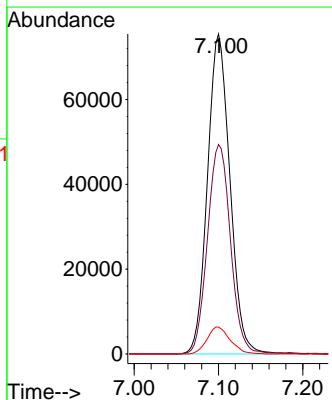
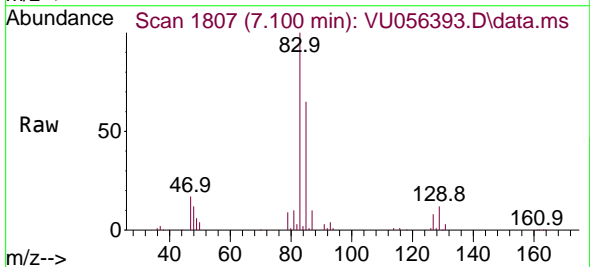


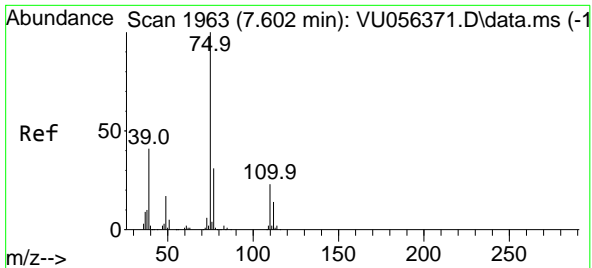
Tgt Ion: 63 Resp: 113605
 Ion Ratio Lower Upper
 63 100
 112 3.8 3.2 4.8



#38
 Bromodichloromethane
 Concen: 5.376 ug/L
 RT: 7.100 min Scan# 1807
 Delta R.T. -0.000 min
 Lab File: VU056393.D
 Acq: 16 Nov 2023 07:24

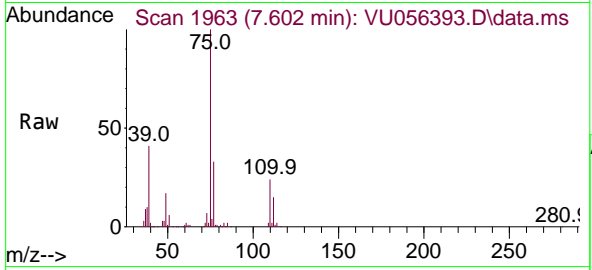
Tgt Ion: 83 Resp: 139727
 Ion Ratio Lower Upper
 83 100
 85 65.5 44.9 83.5
 127 8.4 6.9 10.3



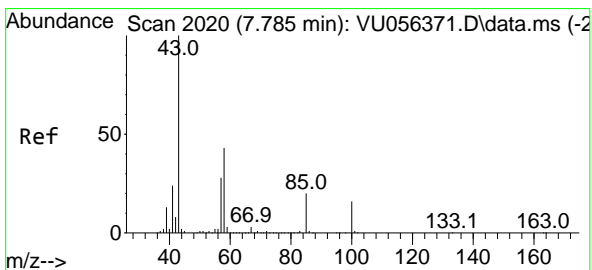
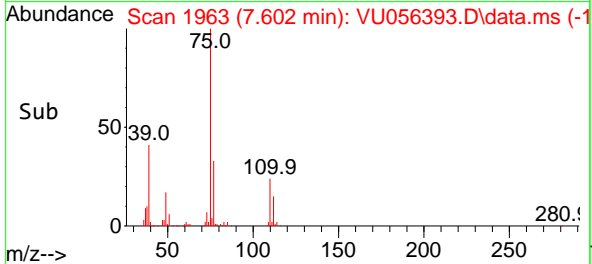
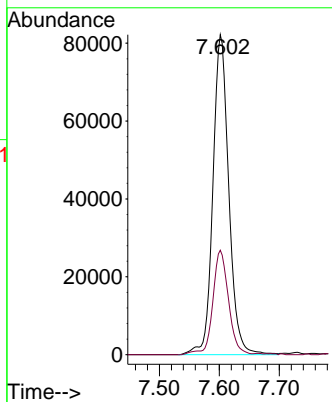


#39
 cis-1,3-Dichloropropene
 Concen: 5.109 ug/L
 RT: 7.602 min Scan# 1963
 Delta R.T. -0.000 min
 Lab File: VU056393.D
 Acq: 16 Nov 2023 07:24

Instrument : MSVOA_U
 ClientSampleId :

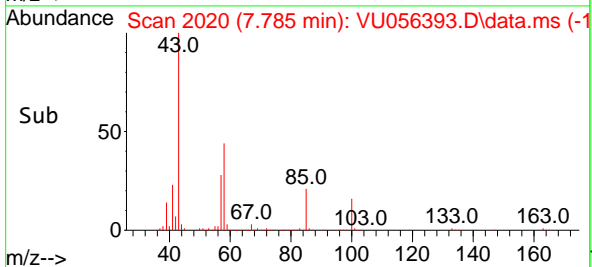
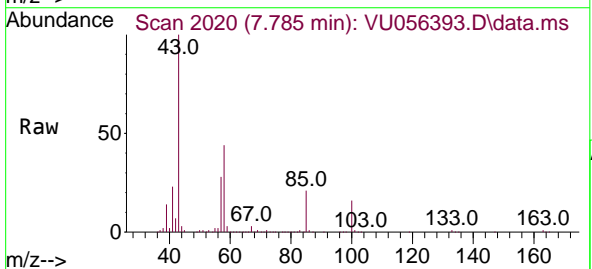
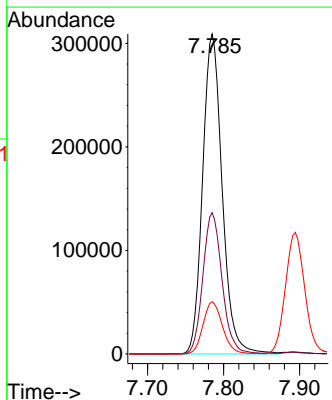


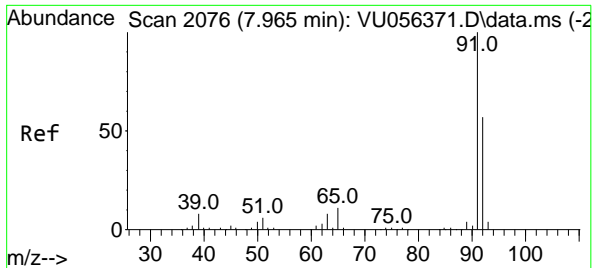
Tgt Ion: 75 Resp: 151163
 Ion Ratio Lower Upper
 75 100
 77 32.6 21.5 39.9



#40
 4-Methyl-2-pentanone
 Concen: 55.318 ug/L
 RT: 7.785 min Scan# 2020
 Delta R.T. -0.000 min
 Lab File: VU056393.D
 Acq: 16 Nov 2023 07:24

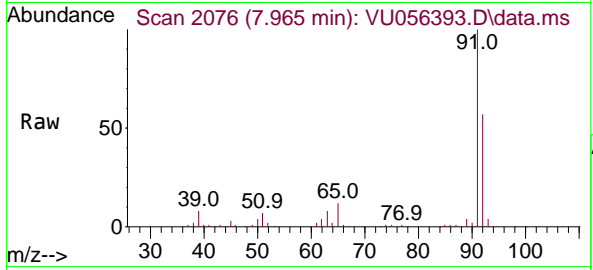
Tgt Ion: 43 Resp: 552100
 Ion Ratio Lower Upper
 43 100
 58 43.4 33.8 50.8
 100 16.3 13.0 19.4



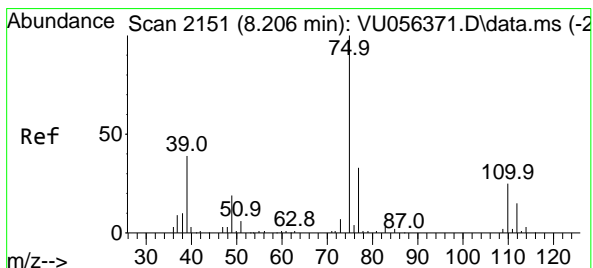
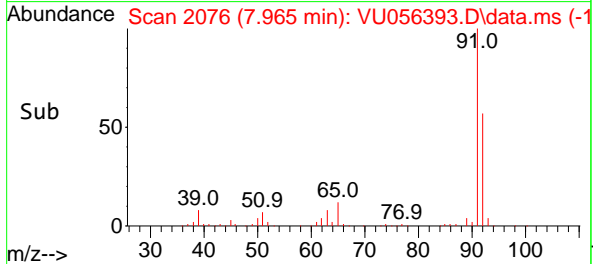
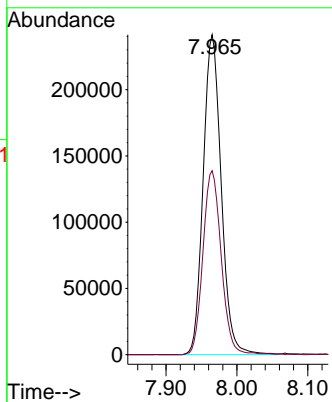


#42
 Toluene
 Concen: 5.340 ug/L
 RT: 7.965 min Scan# 2076
 Delta R.T. -0.000 min
 Lab File: VU056393.D
 Acq: 16 Nov 2023 07:24

Instrument : MSVOA_U
 ClientSampleId :

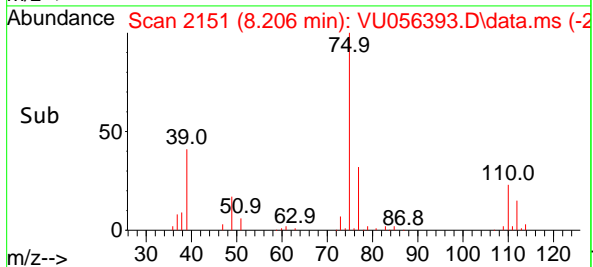
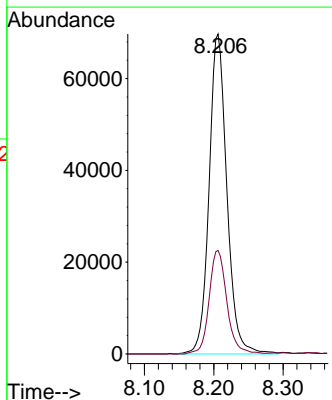
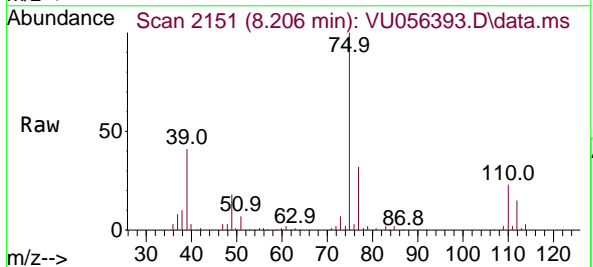


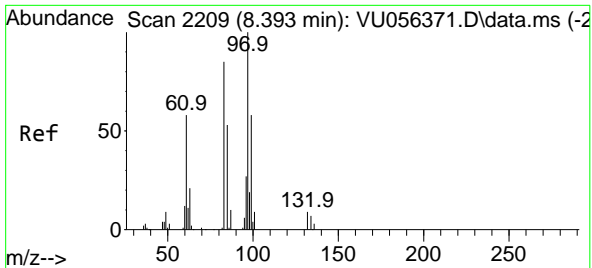
Tgt Ion: 91 Resp: 426874
 Ion Ratio Lower Upper
 91 100
 92 57.5 40.6 75.4



#44
 trans-1,3-Dichloropropene
 Concen: 5.269 ug/L
 RT: 8.206 min Scan# 2151
 Delta R.T. -0.000 min
 Lab File: VU056393.D
 Acq: 16 Nov 2023 07:24

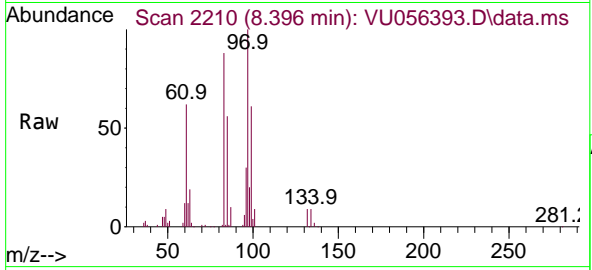
Tgt Ion: 75 Resp: 124272
 Ion Ratio Lower Upper
 75 100
 77 32.4 22.8 42.4





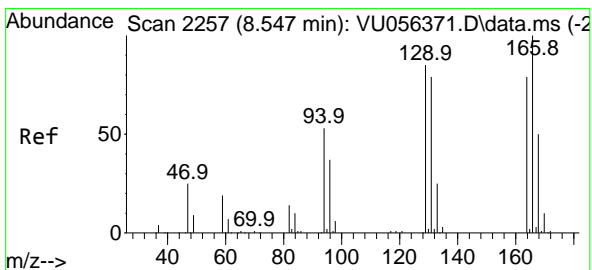
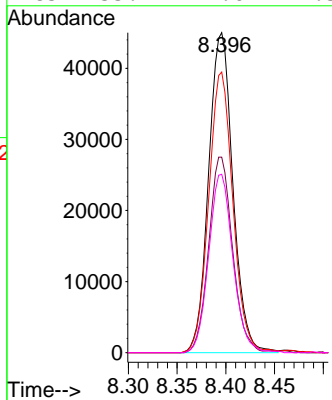
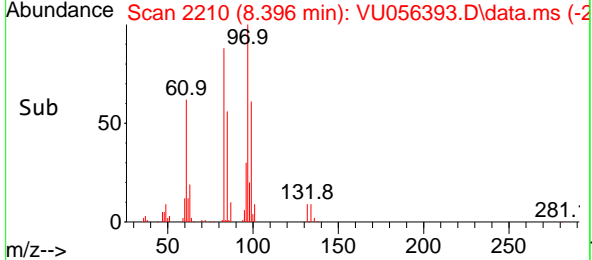
#45
 1,1,2-Trichloroethane
 Concen: 5.818 ug/L
 RT: 8.396 min Scan# 2110
 Delta R.T. 0.003 min
 Lab File: VU056393.D
 Acq: 16 Nov 2023 07:24

Instrument : MSVOA_U
 ClientSampleId :

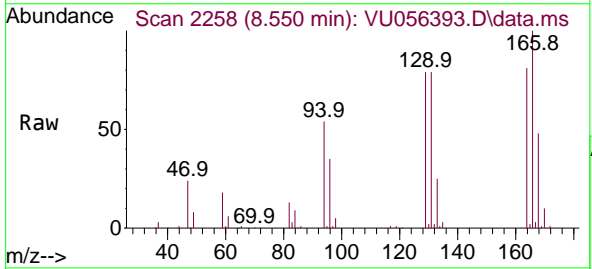


Tgt Ion: 97 Resp: 78020

Ion	Ratio	Lower	Upper
97	100		
99	61.1	44.3	82.3
83	87.7	65.4	121.4
85	55.7	41.6	77.3

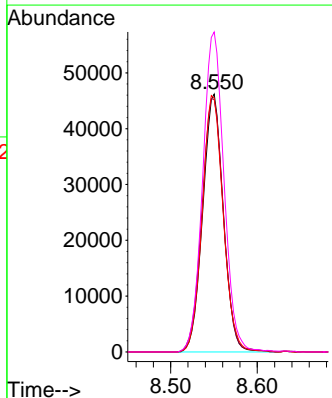
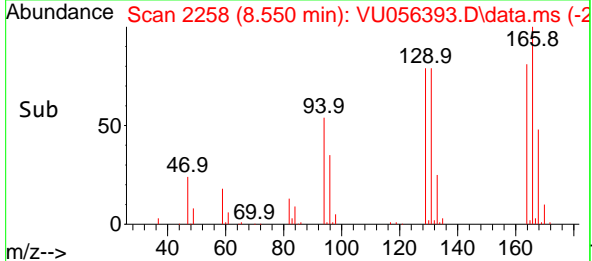


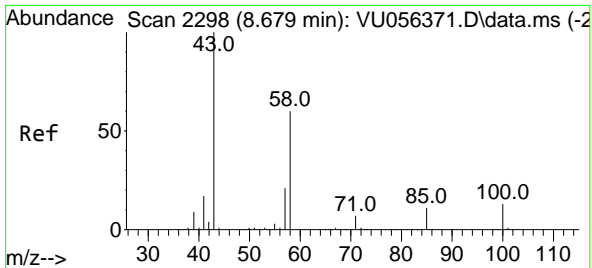
#47
 Tetrachloroethene
 Concen: 5.378 ug/L
 RT: 8.550 min Scan# 2258
 Delta R.T. 0.003 min
 Lab File: VU056393.D
 Acq: 16 Nov 2023 07:24



Tgt Ion: 164 Resp: 76289

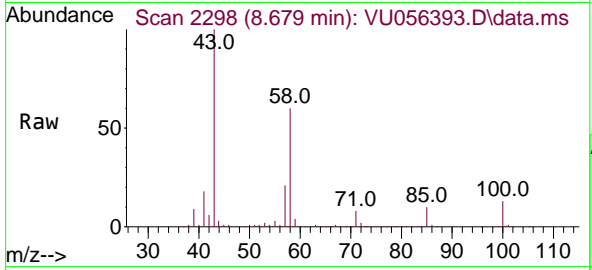
Ion	Ratio	Lower	Upper
164	100		
129	98.0	71.0	131.9
131	98.5	70.3	130.7
166	124.1	89.8	166.8





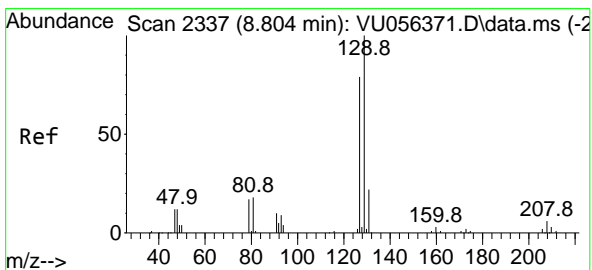
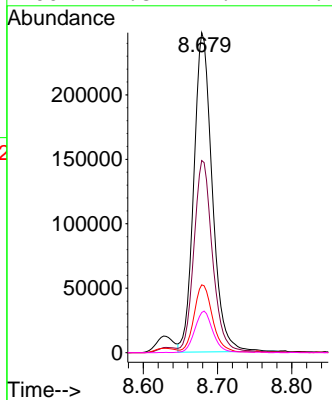
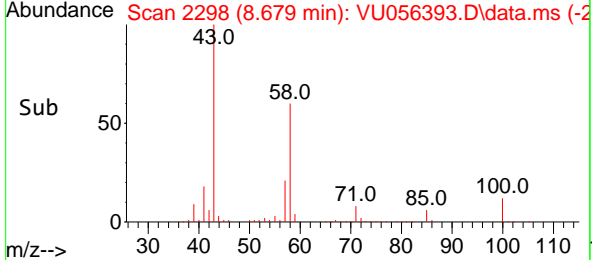
#48
 2-Hexanone
 Concen: 55.080 ug/L
 RT: 8.679 min Scan# 21
 Delta R.T. -0.000 min
 Lab File: VU056393.D
 Acq: 16 Nov 2023 07:24

Instrument : MSVOA_U
 ClientSampleId :

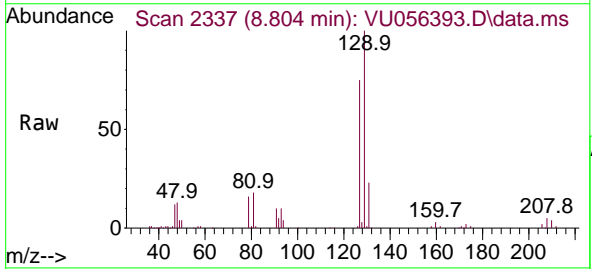


Tgt Ion: 43 Resp: 428265

Ion	Ratio	Lower	Upper
43	100		
58	60.1	48.7	73.1
57	21.2	16.8	25.2
100	12.8	9.9	14.9

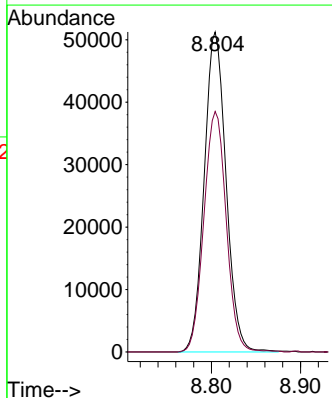
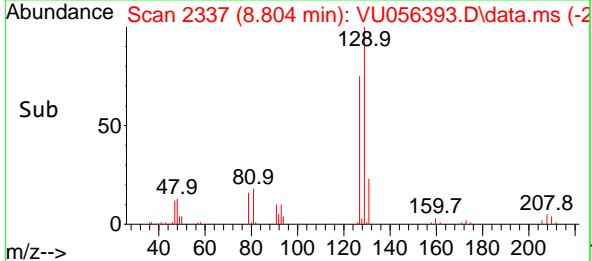


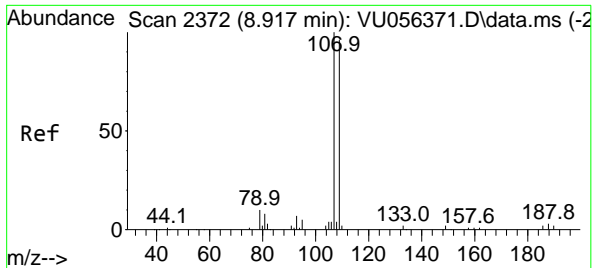
#49
 Dibromochloromethane
 Concen: 5.721 ug/L
 RT: 8.804 min Scan# 2337
 Delta R.T. -0.000 min
 Lab File: VU056393.D
 Acq: 16 Nov 2023 07:24



Tgt Ion: 129 Resp: 87232

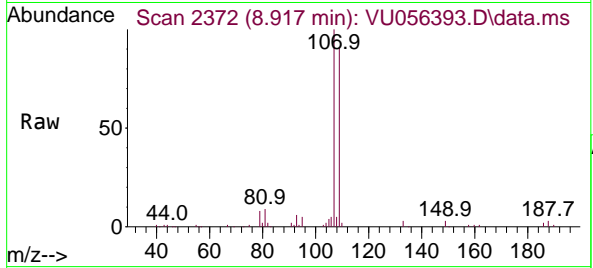
Ion	Ratio	Lower	Upper
129	100		
127	75.1	52.9	98.3



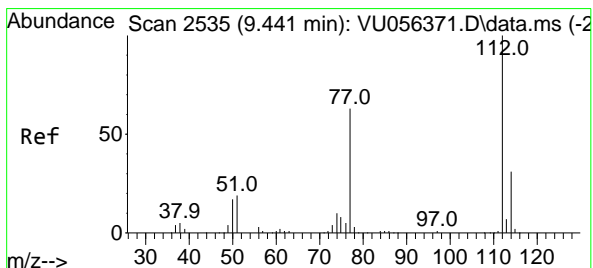
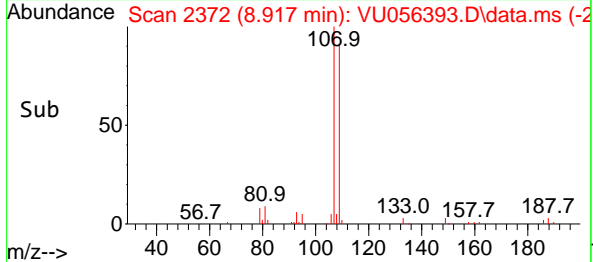
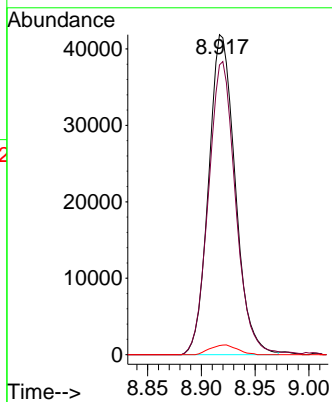


#50
 1,2-Dibromoethane
 Concen: 5.689 ug/L
 RT: 8.917 min Scan# 21
 Delta R.T. -0.000 min
 Lab File: VU056393.D
 Acq: 16 Nov 2023 07:24

Instrument :
 MSVOA_U
 ClientSampleId :

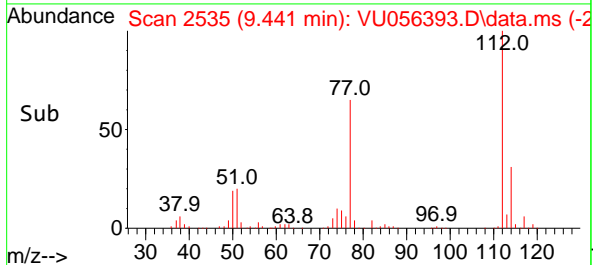
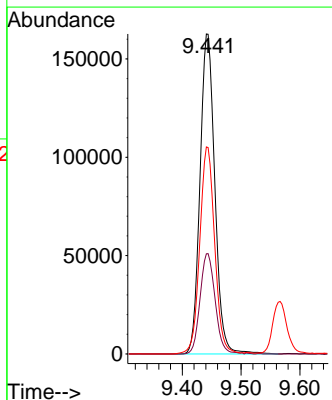
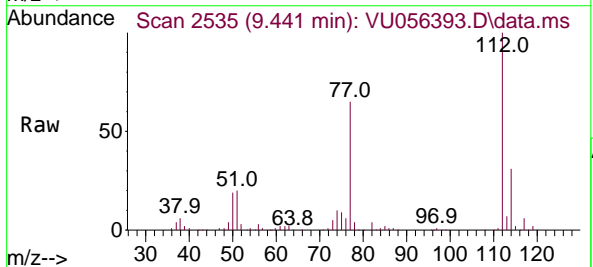


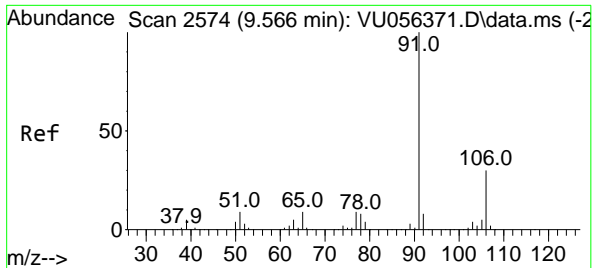
Tgt Ion:107 Resp: 72014
 Ion Ratio Lower Upper
 107 100
 109 90.6 64.2 119.2
 188 2.8 2.6 4.0



#51
 Chlorobenzene
 Concen: 5.544 ug/L
 RT: 9.441 min Scan# 2535
 Delta R.T. -0.000 min
 Lab File: VU056393.D
 Acq: 16 Nov 2023 07:24

Tgt Ion:112 Resp: 284758
 Ion Ratio Lower Upper
 112 100
 114 31.3 22.5 41.7
 77 64.7 51.7 77.5

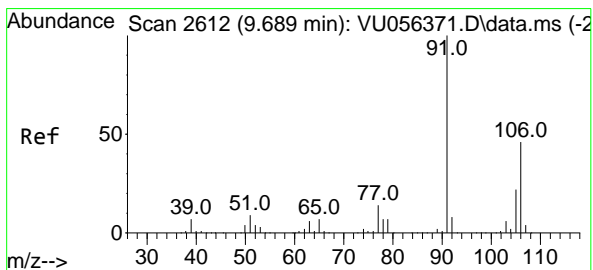
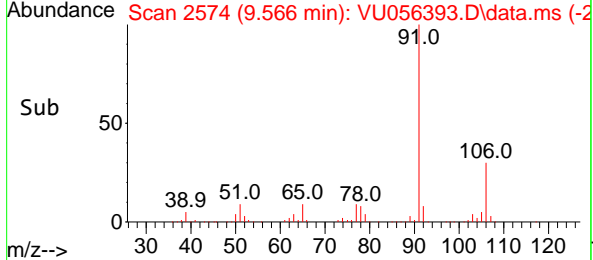
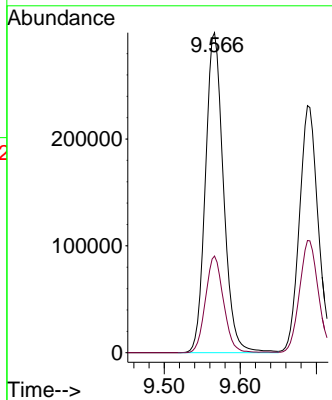
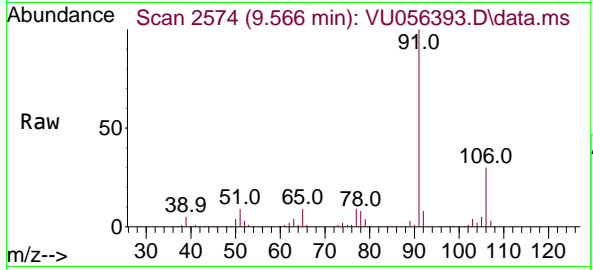




#52
 Ethylbenzene
 Concen: 5.564 ug/L
 RT: 9.566 min Scan# 21
 Delta R.T. -0.000 min
 Lab File: VU056393.D
 Acq: 16 Nov 2023 07:24

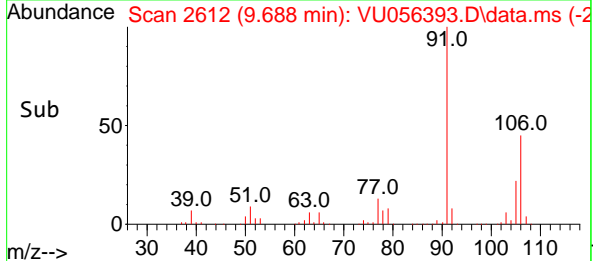
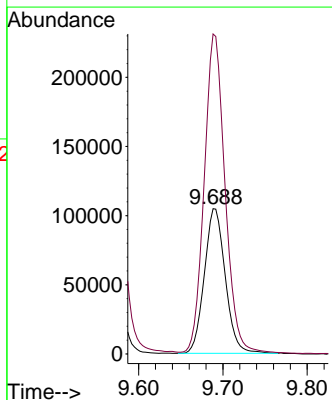
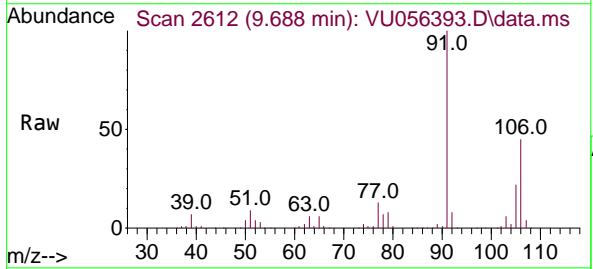
Instrument : MSVOA_U
 ClientSampleId :

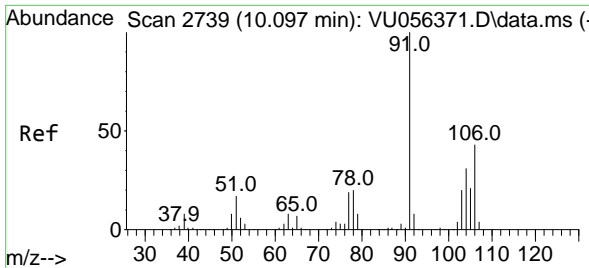
Tgt Ion: 91 Resp: 493903
 Ion Ratio Lower Upper
 91 100
 106 30.2 21.1 39.1



#53
 m,p-Xylene
 Concen: 5.542 ug/L
 RT: 9.688 min Scan# 2612
 Delta R.T. -0.000 min
 Lab File: VU056393.D
 Acq: 16 Nov 2023 07:24

Tgt Ion: 106 Resp: 180837
 Ion Ratio Lower Upper
 106 100
 91 220.4 149.6 277.8

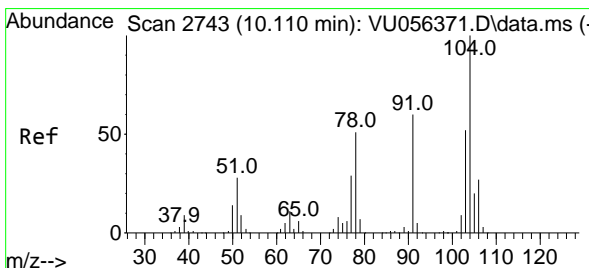
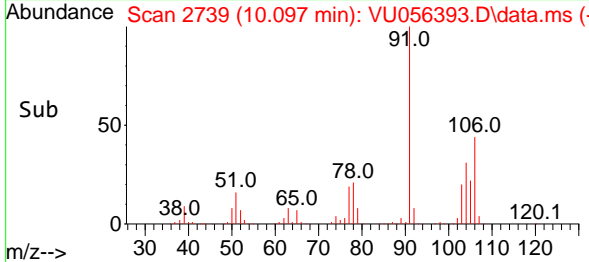
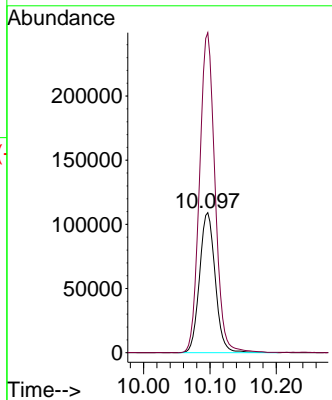
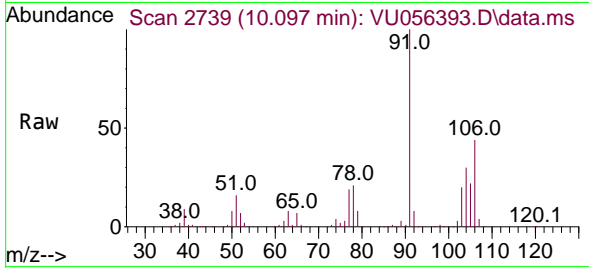




#54
 o-Xylene
 Concen: 5.672 ug/L
 RT: 10.097 min Scan# 2739
 Delta R.T. -0.000 min
 Lab File: VU056393.D
 Acq: 16 Nov 2023 07:24

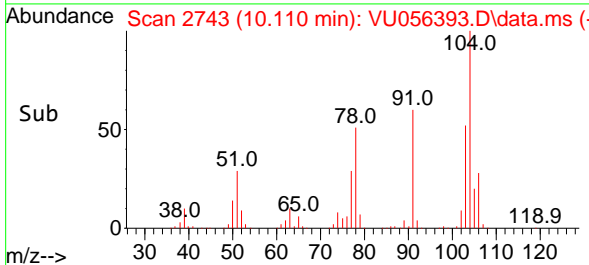
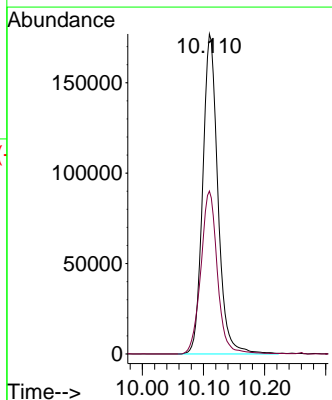
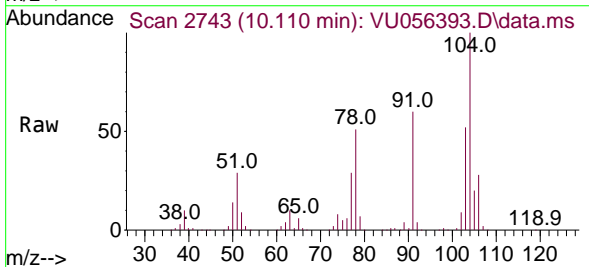
Instrument : MSVOA_U
 ClientSampleId :

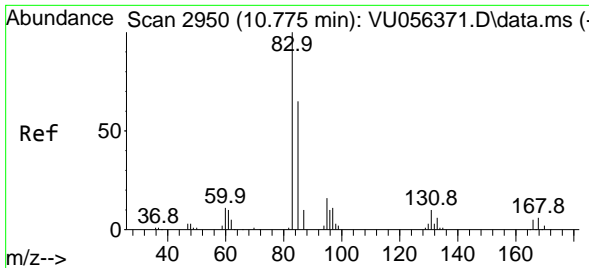
Tgt Ion:106 Resp: 179782
 Ion Ratio Lower Upper
 106 100
 91 228.4 159.3 295.9



#55
 Styrene
 Concen: 5.794 ug/L
 RT: 10.110 min Scan# 2743
 Delta R.T. -0.000 min
 Lab File: VU056393.D
 Acq: 16 Nov 2023 07:24

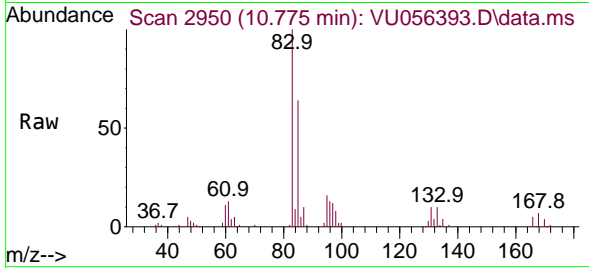
Tgt Ion:104 Resp: 305463
 Ion Ratio Lower Upper
 104 100
 78 50.9 34.2 63.6



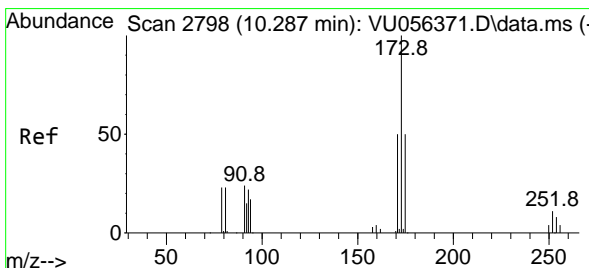
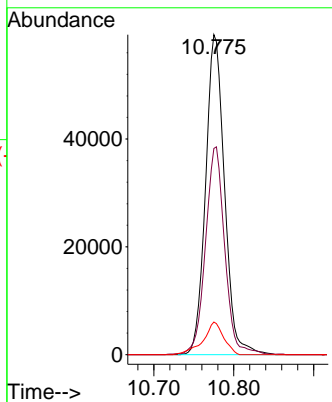
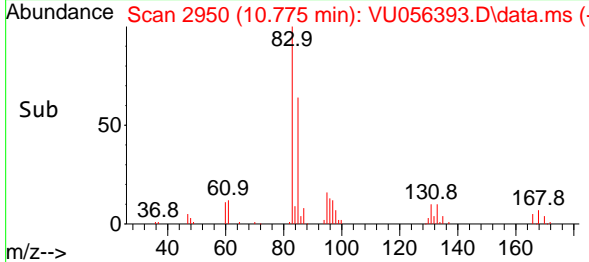


#57
 1,1,2-Tetrachloroethane
 Concen: 5.971 ug/L
 RT: 10.775 min Scan# 2950
 Delta R.T. -0.000 min
 Lab File: VU056393.D
 Acq: 16 Nov 2023 07:24

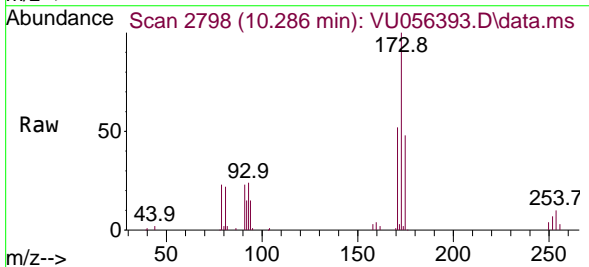
Instrument : MSVOA_U
 ClientSampleId :



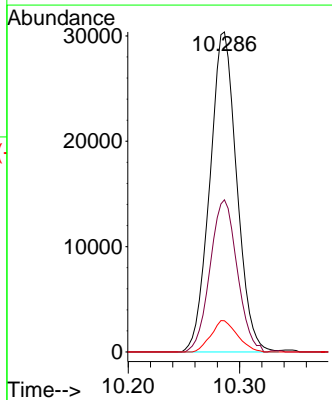
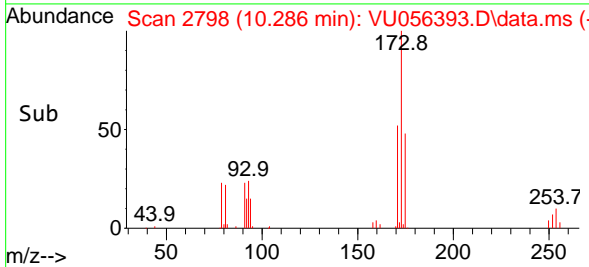
Tgt Ion: 83 Resp: 97766
 Ion Ratio Lower Upper
 83 100
 85 64.5 46.3 86.1
 131 10.2 6.7 10.1#

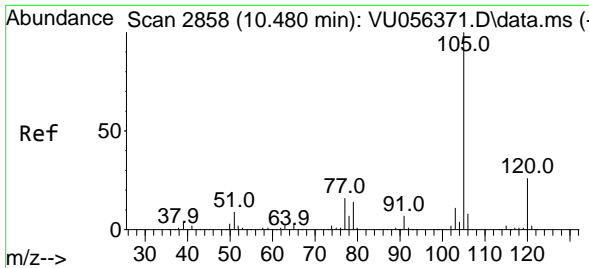


#59
 Bromoform
 Concen: 6.003 ug/L
 RT: 10.286 min Scan# 2798
 Delta R.T. -0.000 min
 Lab File: VU056393.D
 Acq: 16 Nov 2023 07:24



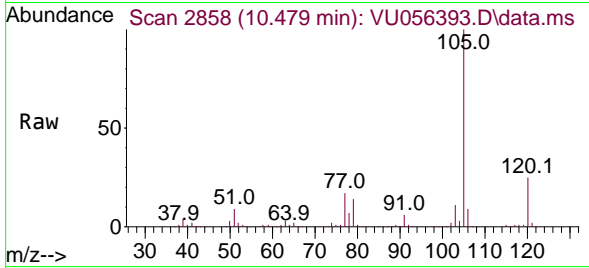
Tgt Ion: 173 Resp: 50999
 Ion Ratio Lower Upper
 173 100
 175 47.9 38.9 58.3
 254 9.6 6.7 10.1





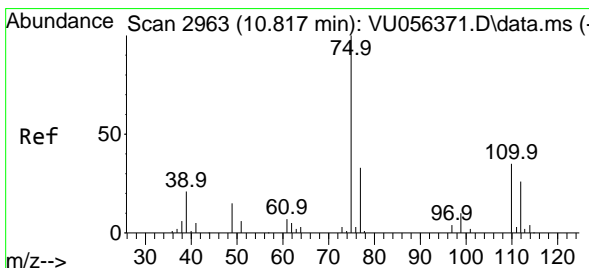
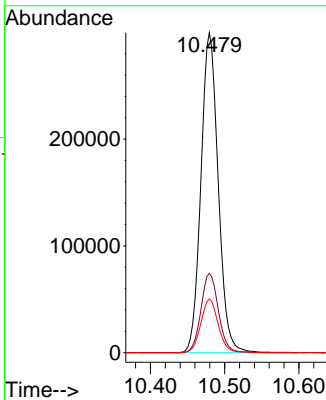
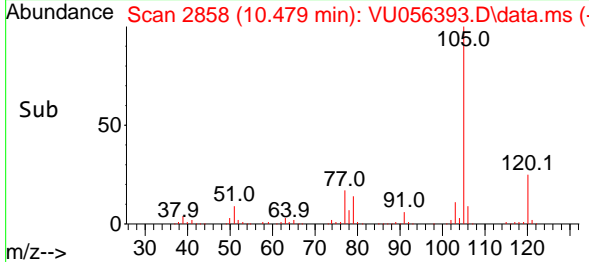
#60
 Isopropylbenzene
 Concen: 5.489 ug/L
 RT: 10.479 min Scan# 2858
 Delta R.T. -0.000 min
 Lab File: VU056393.D
 Acq: 16 Nov 2023 07:24

Instrument : MSVOA_U
 ClientSampleId :

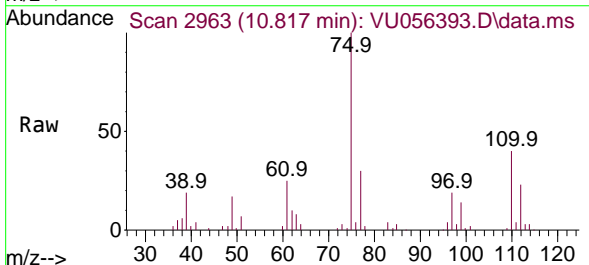


Tgt Ion: 105 Resp: 482808

Ion	Ratio	Lower	Upper
105	100		
120	25.1	20.4	30.6
77	16.9	13.3	19.9

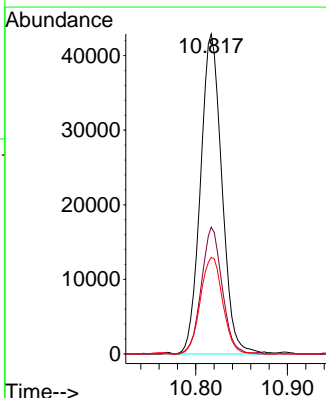
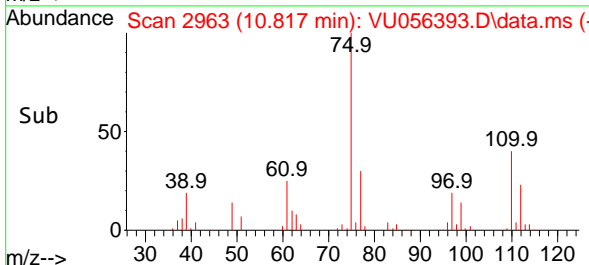


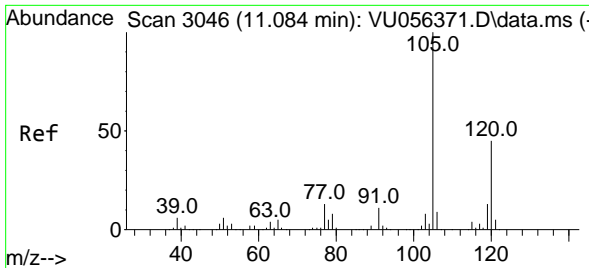
#61
 1,2,3-Trichloropropane
 Concen: 5.953 ug/L
 RT: 10.817 min Scan# 2963
 Delta R.T. -0.000 min
 Lab File: VU056393.D
 Acq: 16 Nov 2023 07:24



Tgt Ion: 75 Resp: 69661

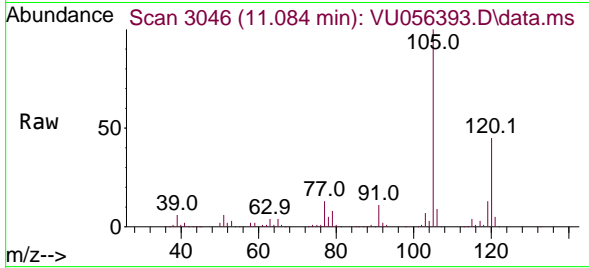
Ion	Ratio	Lower	Upper
75	100		
110	38.2	30.4	45.6
77	31.5	27.0	40.6



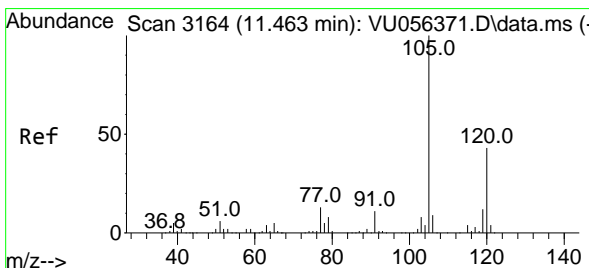
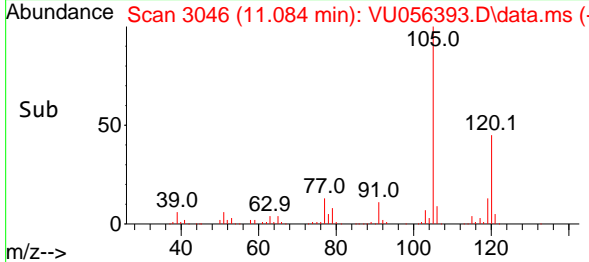
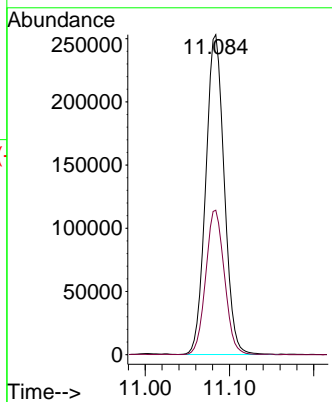


#62
 1,3,5-Trimethylbenzene
 Concen: 5.347 ug/L
 RT: 11.084 min Scan# 3046
 Delta R.T. -0.000 min
 Lab File: VU056393.D
 Acq: 16 Nov 2023 07:24

Instrument : MSVOA_U
 ClientSampleId :

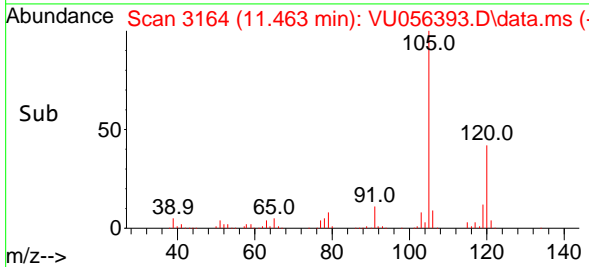
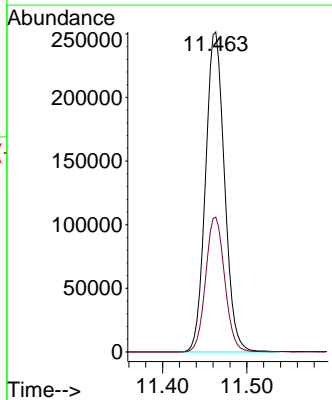
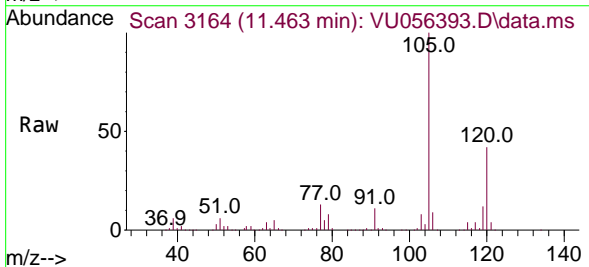


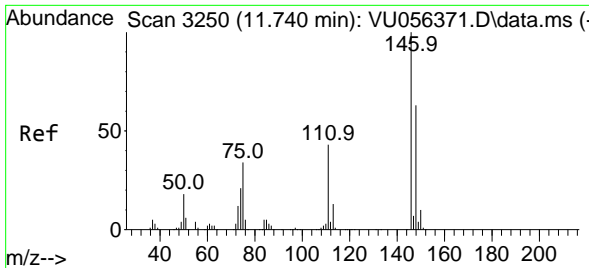
Tgt Ion:105 Resp: 386155
 Ion Ratio Lower Upper
 105 100
 120 45.6 37.2 55.8



#63
 1,2,4-Trimethylbenzene
 Concen: 5.537 ug/L
 RT: 11.463 min Scan# 3164
 Delta R.T. -0.000 min
 Lab File: VU056393.D
 Acq: 16 Nov 2023 07:24

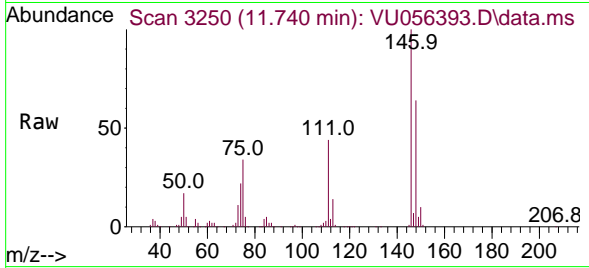
Tgt Ion:105 Resp: 394657
 Ion Ratio Lower Upper
 105 100
 120 42.3 34.0 51.0



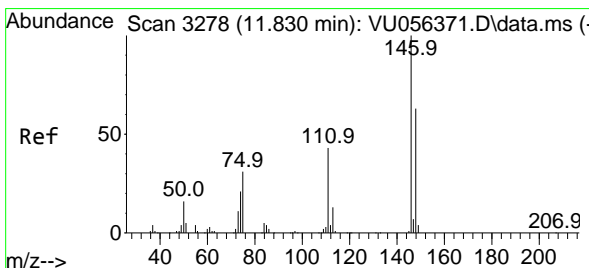
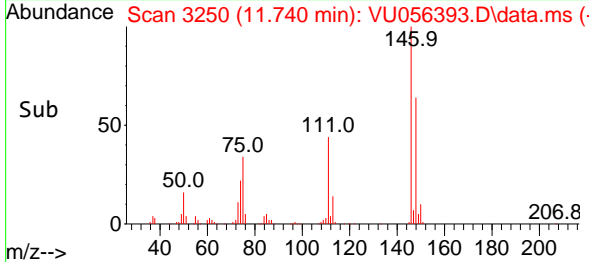
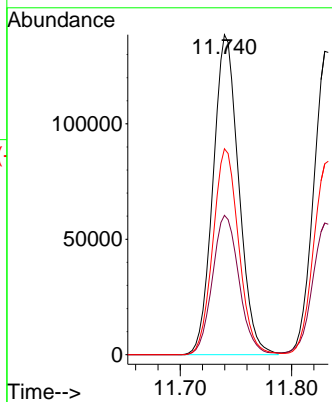


#64
 1,3-Dichlorobenzene
 Concen: 5.555 ug/L
 RT: 11.740 min Scan# 31
 Delta R.T. -0.000 min
 Lab File: VU056393.D
 Acq: 16 Nov 2023 07:24

Instrument :
 MSVOA_U
 ClientSampleId :

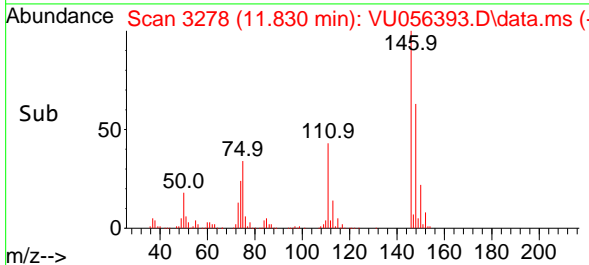
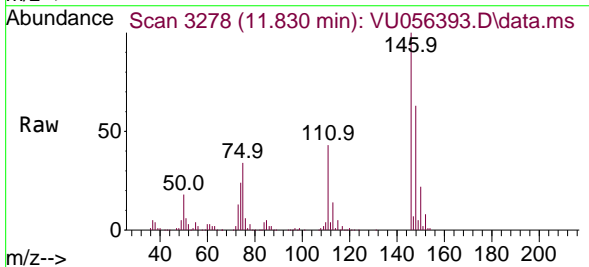
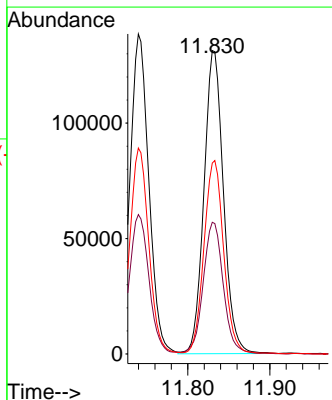


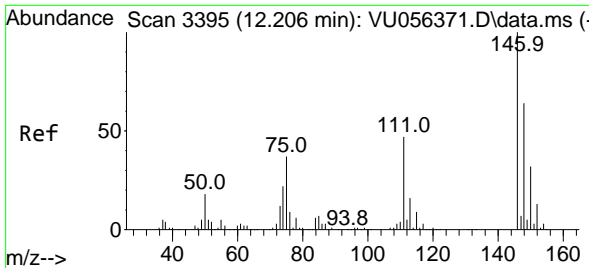
Tgt Ion:146 Resp: 222229
 Ion Ratio Lower Upper
 146 100
 111 43.6 31.1 57.7
 148 64.4 45.1 83.9



#65
 1,4-Dichlorobenzene
 Concen: 5.413 ug/L
 RT: 11.830 min Scan# 3278
 Delta R.T. -0.000 min
 Lab File: VU056393.D
 Acq: 16 Nov 2023 07:24

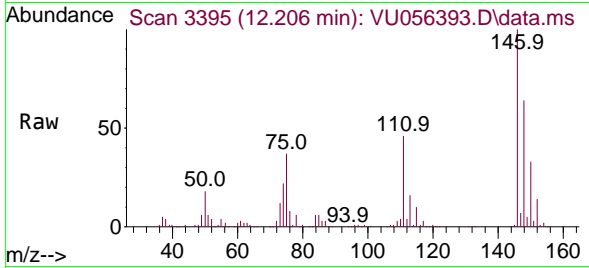
Tgt Ion:146 Resp: 217246
 Ion Ratio Lower Upper
 146 100
 111 43.4 30.5 56.7
 148 62.9 44.8 83.2



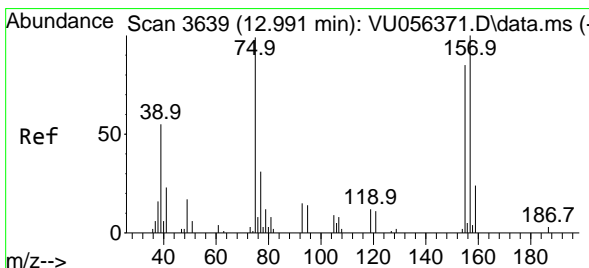
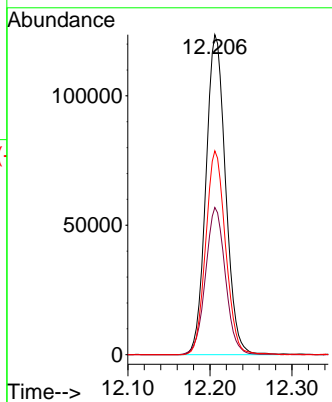
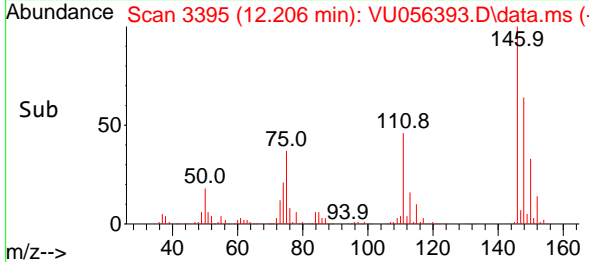


#67
 1,2-Dichlorobenzene
 Concen: 5.606 ug/L
 RT: 12.206 min Scan# 3111
 Delta R.T. -0.000 min
 Lab File: VU056393.D
 Acq: 16 Nov 2023 07:24

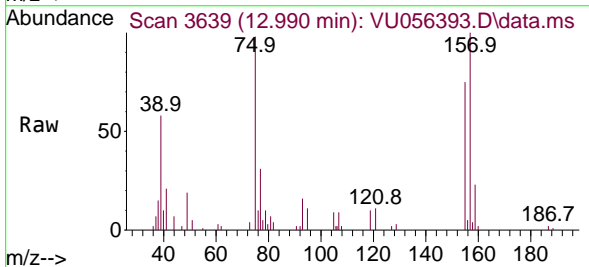
Instrument : MSVOA_U
 ClientSampleId :



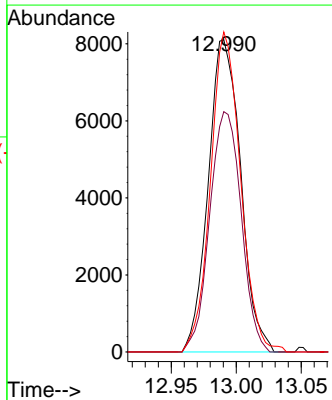
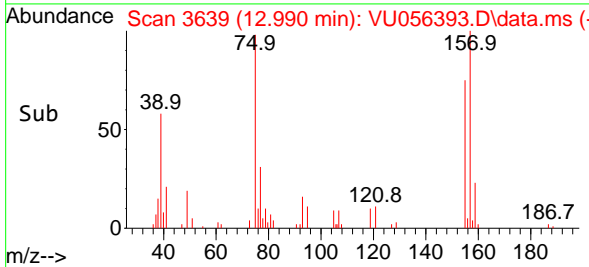
Tgt Ion:146 Resp: 205781
 Ion Ratio Lower Upper
 146 100
 111 46.0 38.3 57.5
 148 63.7 52.2 78.4

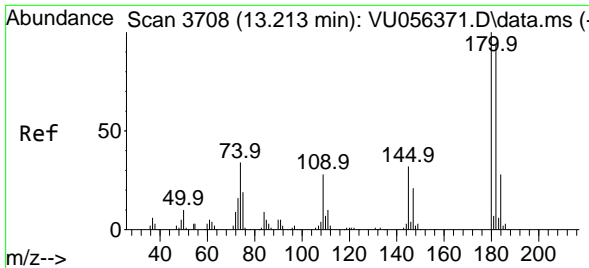


#68
 1,2-Dibromo-3-chloropropane
 Concen: 5.624 ug/L
 RT: 12.990 min Scan# 3639
 Delta R.T. -0.000 min
 Lab File: VU056393.D
 Acq: 16 Nov 2023 07:24



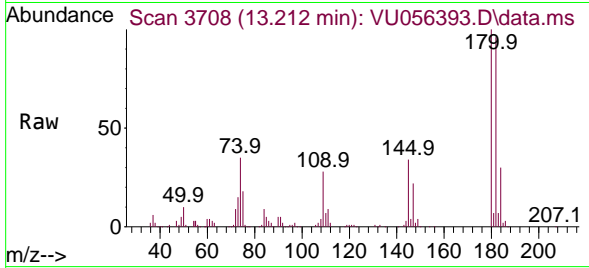
Tgt Ion: 75 Resp: 14056
 Ion Ratio Lower Upper
 75 100
 155 77.0 62.4 93.6
 157 102.5 80.2 120.2



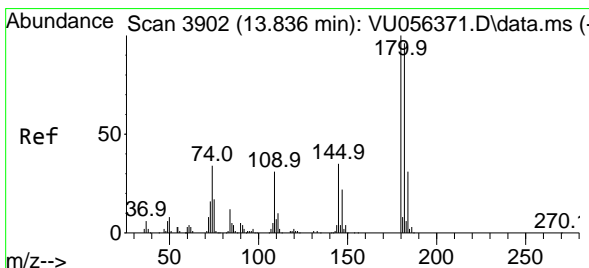
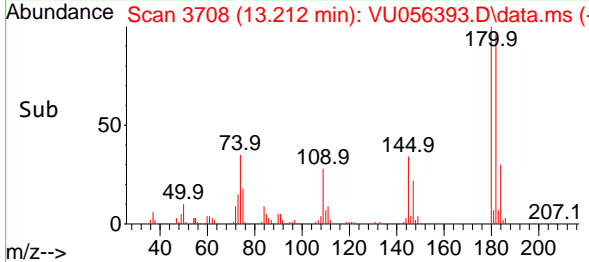
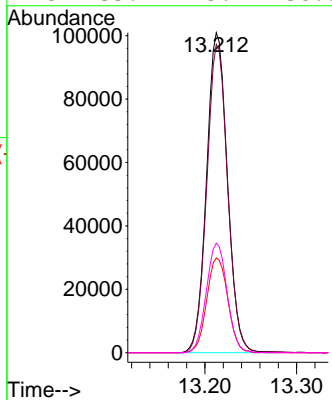


#69
 1,3,5-Trichlorobenzene
 Concen: 5.312 ug/L
 RT: 13.212 min Scan# 31
 Delta R.T. -0.000 min
 Lab File: VU056393.D
 Acq: 16 Nov 2023 07:24

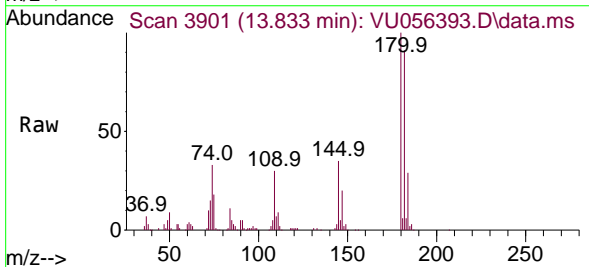
Instrument :
 MSVOA_U
 ClientSampleId :



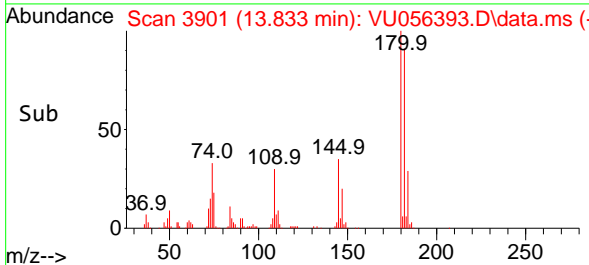
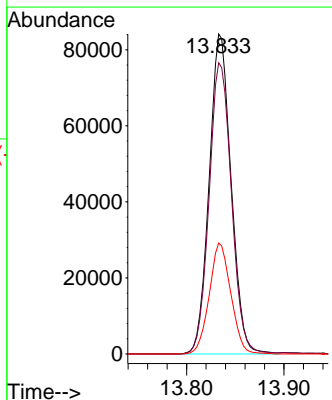
Tgt Ion:180 Resp: 160009
 Ion Ratio Lower Upper
 180 100
 182 95.8 75.1 112.7
 184 29.9 23.5 35.3
 145 33.9 25.4 38.0

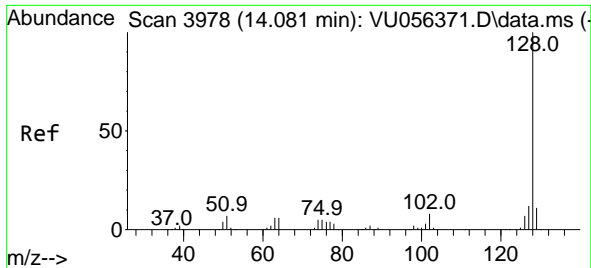


#70
 1,2,4-trichlorobenzene
 Concen: 5.366 ug/L
 RT: 13.833 min Scan# 3901
 Delta R.T. -0.003 min
 Lab File: VU056393.D
 Acq: 16 Nov 2023 07:24



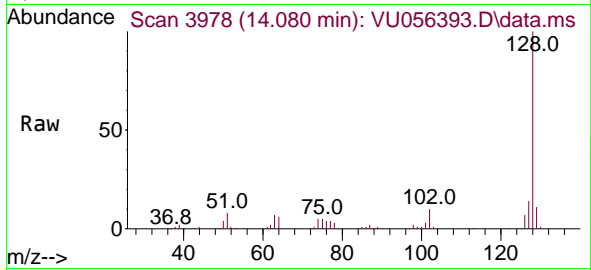
Tgt Ion:180 Resp: 131653
 Ion Ratio Lower Upper
 180 100
 182 92.6 75.4 113.2
 145 34.1 26.8 40.2



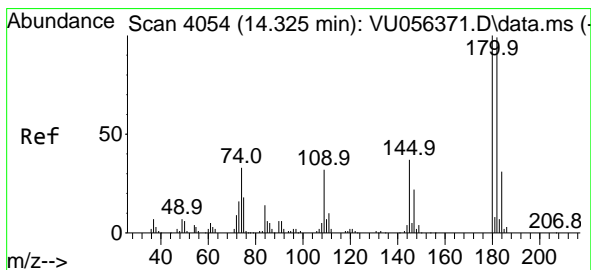
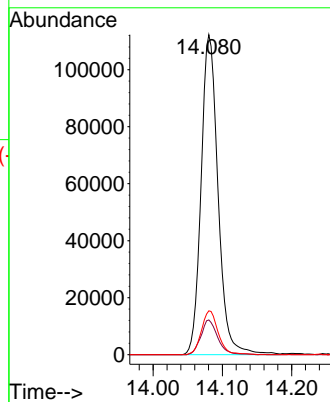
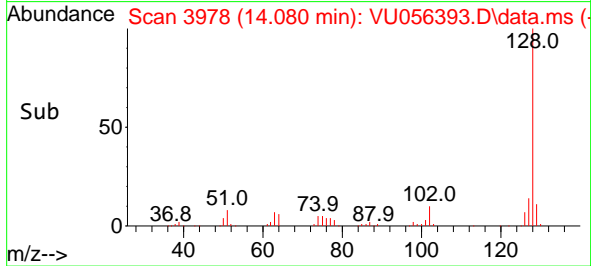


#71
 Naphthalene
 Concen: 5.158 ug/L
 RT: 14.080 min Scan# 3978
 Delta R.T. -0.000 min
 Lab File: VU056393.D
 Acq: 16 Nov 2023 07:24

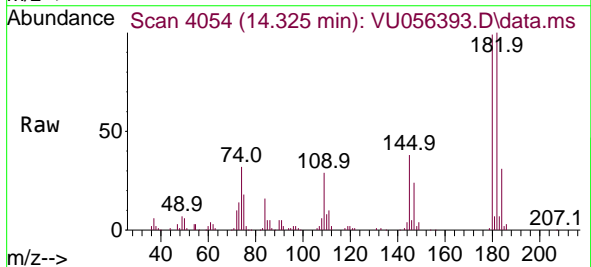
Instrument : MSVOA_U
 ClientSampleId :



Tgt Ion:128 Resp: 191190
 Ion Ratio Lower Upper
 128 100
 129 10.7 8.6 12.8
 127 13.6 10.3 15.5



#72
 1,2,3-Trichlorobenzene
 Concen: 5.343 ug/L
 RT: 14.325 min Scan# 4054
 Delta R.T. -0.000 min
 Lab File: VU056393.D
 Acq: 16 Nov 2023 07:24



Tgt Ion:180 Resp: 107976
 Ion Ratio Lower Upper
 180 100
 182 98.1 78.6 117.8
 145 36.5 29.0 43.6

