

Data Path : Z:\voasrv\HPCHEM1\MSVOA_U\Data\VU111623\
 Data File : VU056409.D
 Acq On : 16 Nov 2023 15:56
 Operator : MD/SY
 Sample : 05373-03
 Misc : 25mL/MSVOA_U/WATER
 ALS Vial : 17 Sample Multiplier: 1

Instrument :
 MSVOA_U
 ClientSampleId :
 GCDR9

Quant Time: Nov 17 01:38:33 2023
 Quant Method : Z:\voasrv\HPCHEM1\MSVOA_U\Method\SFAMUTR111323WMA.M
 Quant Title : TRACE VOA SFAM1.0
 QLast Update : Fri Nov 17 01:31:28 2023
 Response via : Initial Calibration

Compound	R.T.	QIon	Response	Conc	Units	Dev(Min)

Internal Standards						
1) 1,4-Difluorobenzene	6.245	114	279205	5.000	ug/L	0.00
28) Chlorobenzene-d5	9.415	117	278959	5.000	ug/L	0.00
58) 1,4-Dichlorobenzene-d4	11.811	152	122449	5.000	ug/L	0.00
System Monitoring Compounds						
4) Vinyl Chloride-d3	1.596	65	89115	4.267	ug/L	0.00
Spiked Amount	5.000	Range 40 - 130	Recovery	=	85.400%	
7) Chloroethane-d5	1.907	69	73971	4.620	ug/L	0.00
Spiked Amount	5.000	Range 65 - 130	Recovery	=	92.400%	
11) 1,1-Dichloroethene-d2	2.563	65	40861	4.434	ug/L	0.00
Spiked Amount	5.000	Range 60 - 125	Recovery	=	88.600%	
20) 2-Butanone-d5	4.618	46	233287	56.022	ug/L	0.00
Spiked Amount	50.000	Range 40 - 130	Recovery	=	112.040%	
24) Chloroform-d	5.058	84	194842	4.824	ug/L	0.00
Spiked Amount	5.000	Range 70 - 125	Recovery	=	96.400%	
26) 1,2-Dichloroethane-d4	5.695	65	97446	5.221	ug/L	0.00
Spiked Amount	5.000	Range 70 - 130	Recovery	=	104.400%	
32) Benzene-d6	5.721	84	366963	4.415	ug/L	0.00
Spiked Amount	5.000	Range 70 - 125	Recovery	=	88.400%	
36) 1,2-Dichloropropane-d6	6.685	67	119558	4.773	ug/L	0.00
Spiked Amount	5.000	Range 60 - 140	Recovery	=	95.400%	
41) Toluene-d8	7.894	98	312649	4.260	ug/L	0.00
Spiked Amount	5.000	Range 70 - 130	Recovery	=	85.200%	
43) trans-1,3-Dichloroprop...	8.174	79	44729	4.656	ug/L	0.00
Spiked Amount	5.000	Range 55 - 130	Recovery	=	93.200%	
46) 2-Hexanone-d5	8.627	63	191813	50.807	ug/L	0.00
Spiked Amount	50.000	Range 45 - 130	Recovery	=	101.620%	
56) 1,1,2,2-Tetrachloroeth...	10.750	84	86366	4.825	ug/L	0.00
Spiked Amount	5.000	Range 65 - 120	Recovery	=	96.600%	
66) 1,2-Dichlorobenzene-d4	12.190	152	114746	5.073	ug/L	0.00
Spiked Amount	5.000	Range 80 - 120	Recovery	=	101.400%	

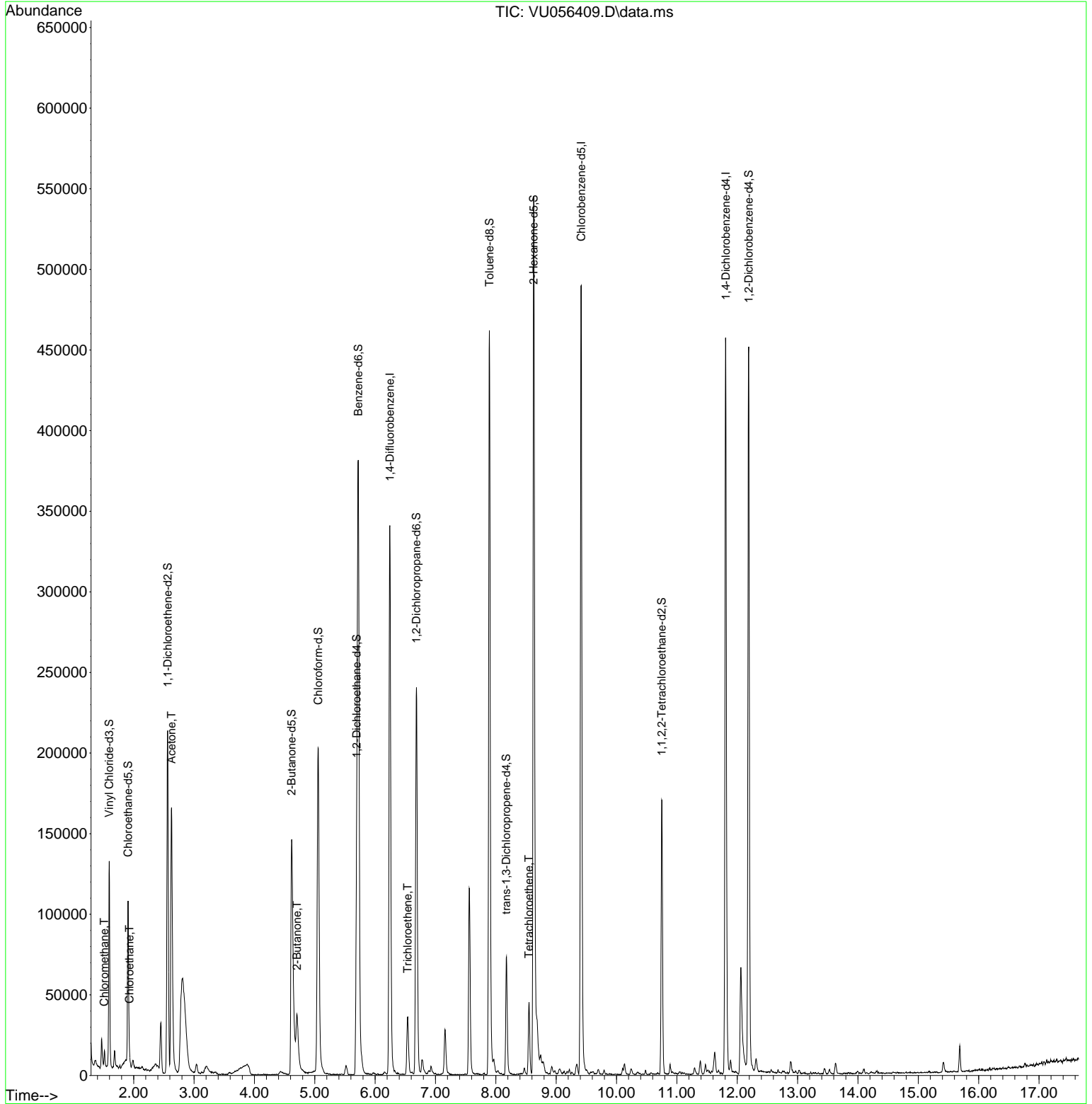
Target Compounds						Qvalue
3) Chloromethane	1.515	50	6289	0.278	ug/L	97
8) Chloroethane	1.930	64	3798	0.285	ug/L	91
13) Acetone	2.628	43	207554	58.521	ug/L	100
21) 2-Butanone	4.705	43	54761	11.899	ug/L	97
34) Trichloroethene	6.541	95	12803	0.590	ug/L	94
47) Tetrachloroethene	8.550	164	8390	0.574	ug/L	95

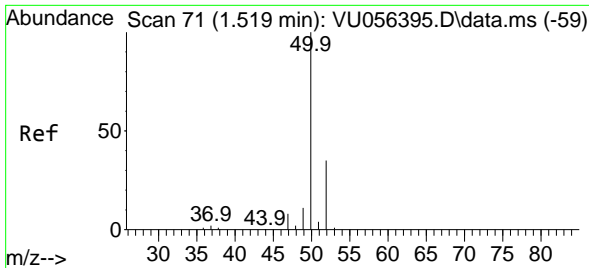
(#) = qualifier out of range (m) = manual integration (+) = signals summed

Data Path : Z:\voasrv\HPCHEM1\MSVOA_U\Data\VU111623\
 Data File : VU056409.D
 Acq On : 16 Nov 2023 15:56
 Operator : MD/SY
 Sample : 05373-03
 Misc : 25mL/MSVOA_U/WATER
 ALS Vial : 17 Sample Multiplier: 1

Instrument :
 MSVOA_U
 ClientSampleId :
 GCDR9

Quant Time: Nov 17 01:38:33 2023
 Quant Method : Z:\voasrv\HPCHEM1\MSVOA_U\Method\SFAMUTR111323WMA.M
 Quant Title : TRACE VOA SFAM1.0
 QLast Update : Fri Nov 17 01:31:28 2023
 Response via : Initial Calibration

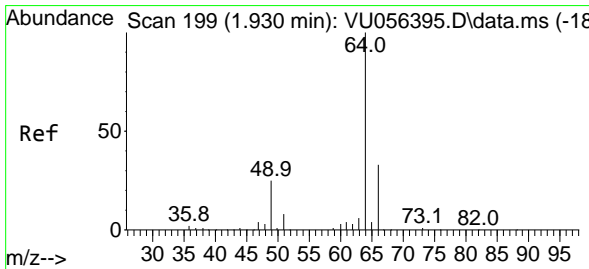
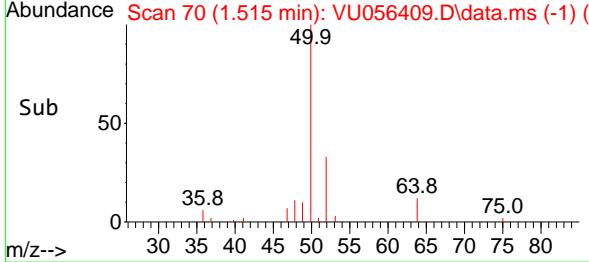
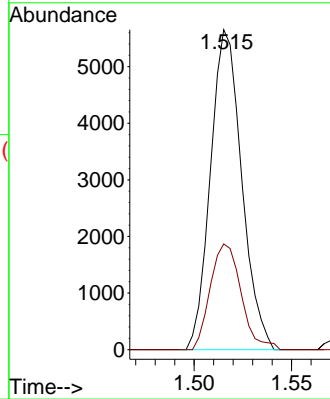
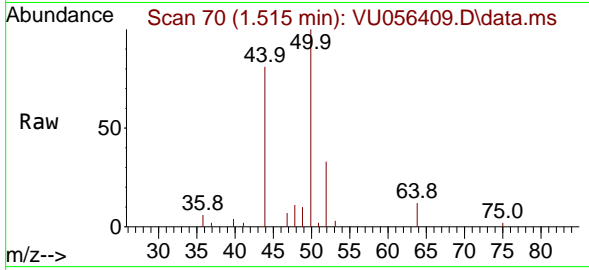




#3
 Chloromethane
 Concen: 0.278 ug/L
 RT: 1.515 min Scan# 70
 Delta R.T. -0.004 min
 Lab File: VU056409.D
 Acq: 16 Nov 2023 15:56

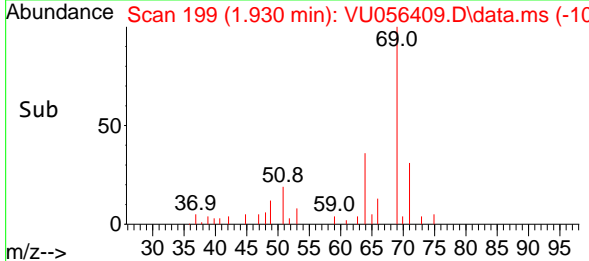
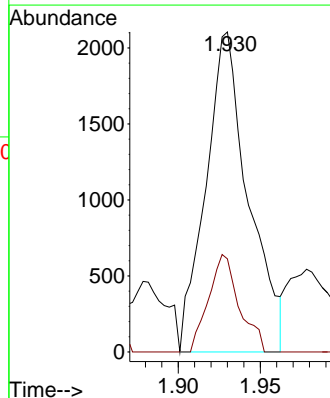
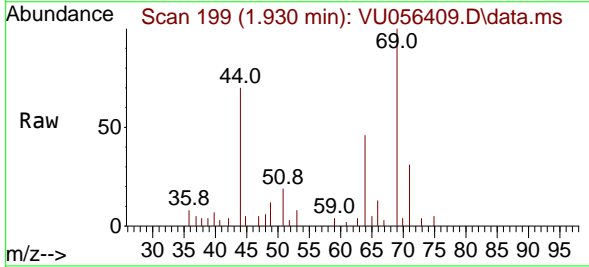
Instrument : MSVOA_U
 ClientSampleId : GCDR9

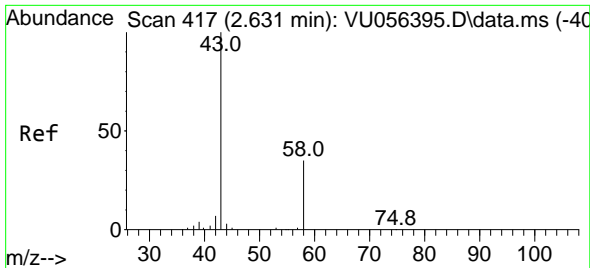
Tgt Ion: 50 Resp: 6289
 Ion Ratio Lower Upper
 50 100
 52 33.0 24.3 45.1



#8
 Chloroethane
 Concen: 0.285 ug/L
 RT: 1.930 min Scan# 199
 Delta R.T. -0.000 min
 Lab File: VU056409.D
 Acq: 16 Nov 2023 15:56

Tgt Ion: 64 Resp: 3798
 Ion Ratio Lower Upper
 64 100
 66 29.1 23.9 44.5

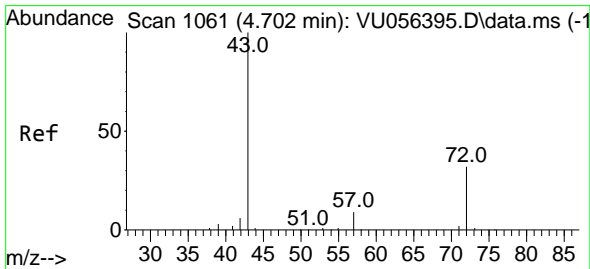
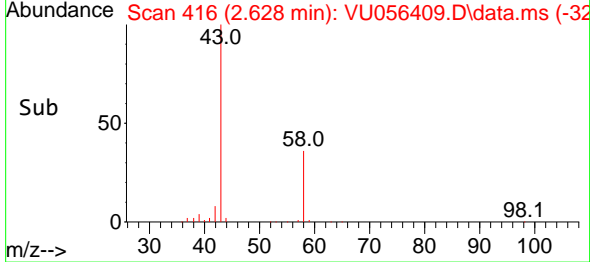
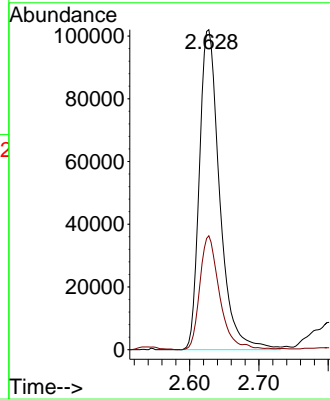
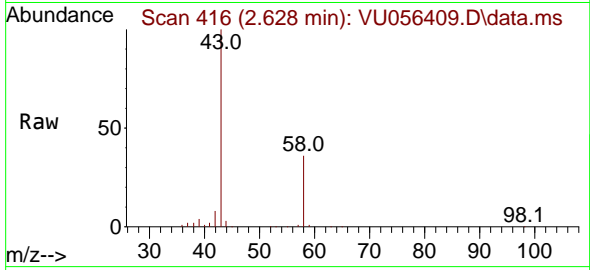




#13
 Acetone
 Concen: 58.521 ug/L
 RT: 2.628 min Scan# 416
 Delta R.T. -0.004 min
 Lab File: VU056409.D
 Acq: 16 Nov 2023 15:56

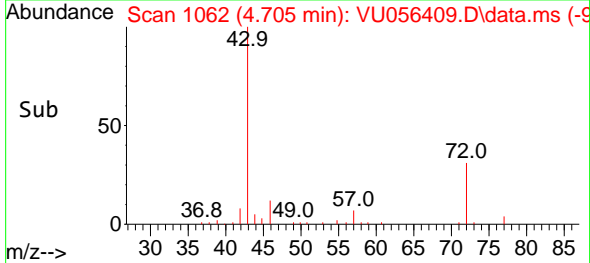
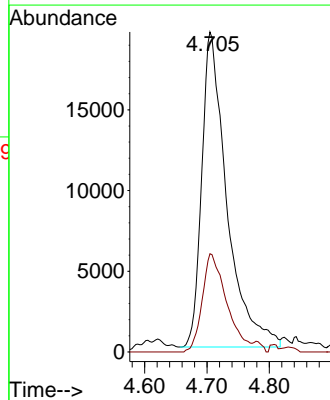
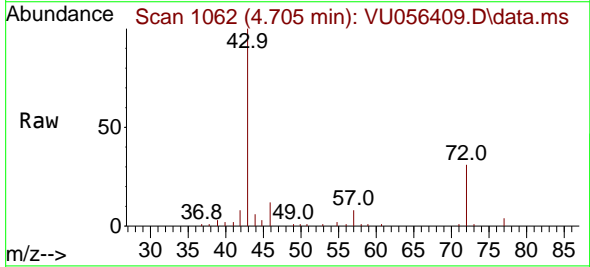
Instrument : MSVOA_U
 ClientSampleId : GCDR9

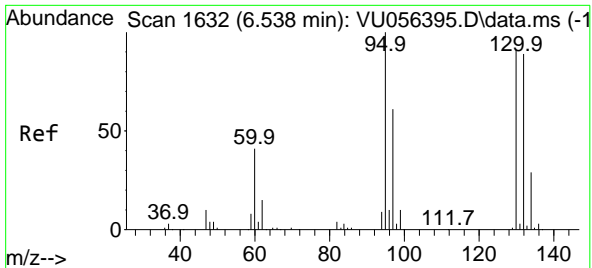
Tgt Ion: 43 Resp: 207554
 Ion Ratio Lower Upper
 43 100
 58 34.8 0.0 70.0



#21
 2-Butanone
 Concen: 11.899 ug/L
 RT: 4.705 min Scan# 1062
 Delta R.T. 0.003 min
 Lab File: VU056409.D
 Acq: 16 Nov 2023 15:56

Tgt Ion: 43 Resp: 54761
 Ion Ratio Lower Upper
 43 100
 72 30.2 14.2 42.6



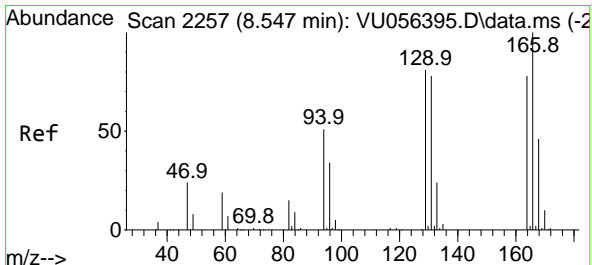
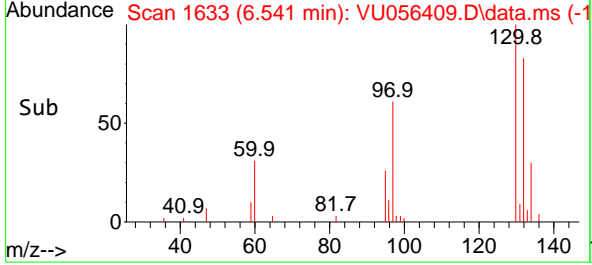
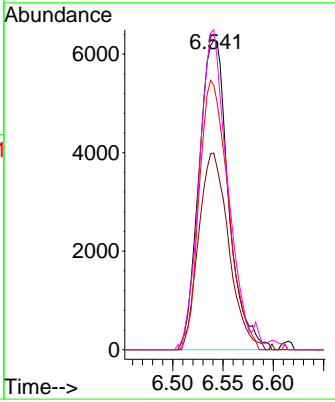
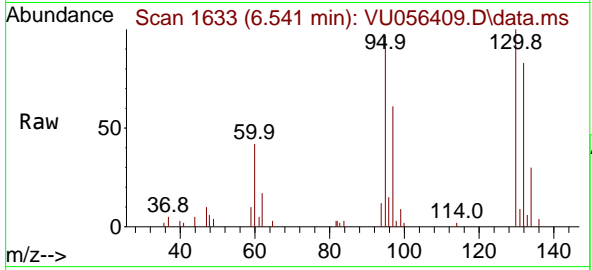


#34
 Trichloroethene
 Concen: 0.590 ug/L
 RT: 6.541 min Scan# 1
 Delta R.T. 0.003 min
 Lab File: VU056409.D
 Acq: 16 Nov 2023 15:56

Instrument : MSVOA_U
 ClientSampleId : GCDR9

Tgt Ion: 95 Resp: 12803

Ion	Ratio	Lower	Upper
95	100		
97	63.6	46.5	86.3
132	85.6	62.0	115.2
130	103.5	66.3	123.1



#47
 Tetrachloroethene
 Concen: 0.574 ug/L
 RT: 8.550 min Scan# 2258
 Delta R.T. 0.003 min
 Lab File: VU056409.D
 Acq: 16 Nov 2023 15:56

Tgt Ion: 164 Resp: 8390

Ion	Ratio	Lower	Upper
164	100		
129	98.8	71.0	131.9
131	104.7	70.3	130.7
166	136.0	89.8	166.8

