

Data Path : Z:\voasrv\HPCHEM1\MSVOA_U\Data\VU111623\
 Data File : VU056420.D
 Acq On : 17 Nov 2023 01:59
 Operator : MD/SY
 Sample : 05333-08
 Misc : 25mL/MSVOA_U/WATER
 ALS Vial : 30 Sample Multiplier: 1

Instrument :
 MSVOA_U
 ClientSampleId :
 YCG93

Quant Time: Nov 17 04:31:28 2023
 Quant Method : Z:\voasrv\HPCHEM1\MSVOA_U\Method\SFAMUTR111323WMA.M
 Quant Title : TRACE VOA SFAM1.0
 QLast Update : Fri Nov 17 04:03:21 2023
 Response via : Initial Calibration

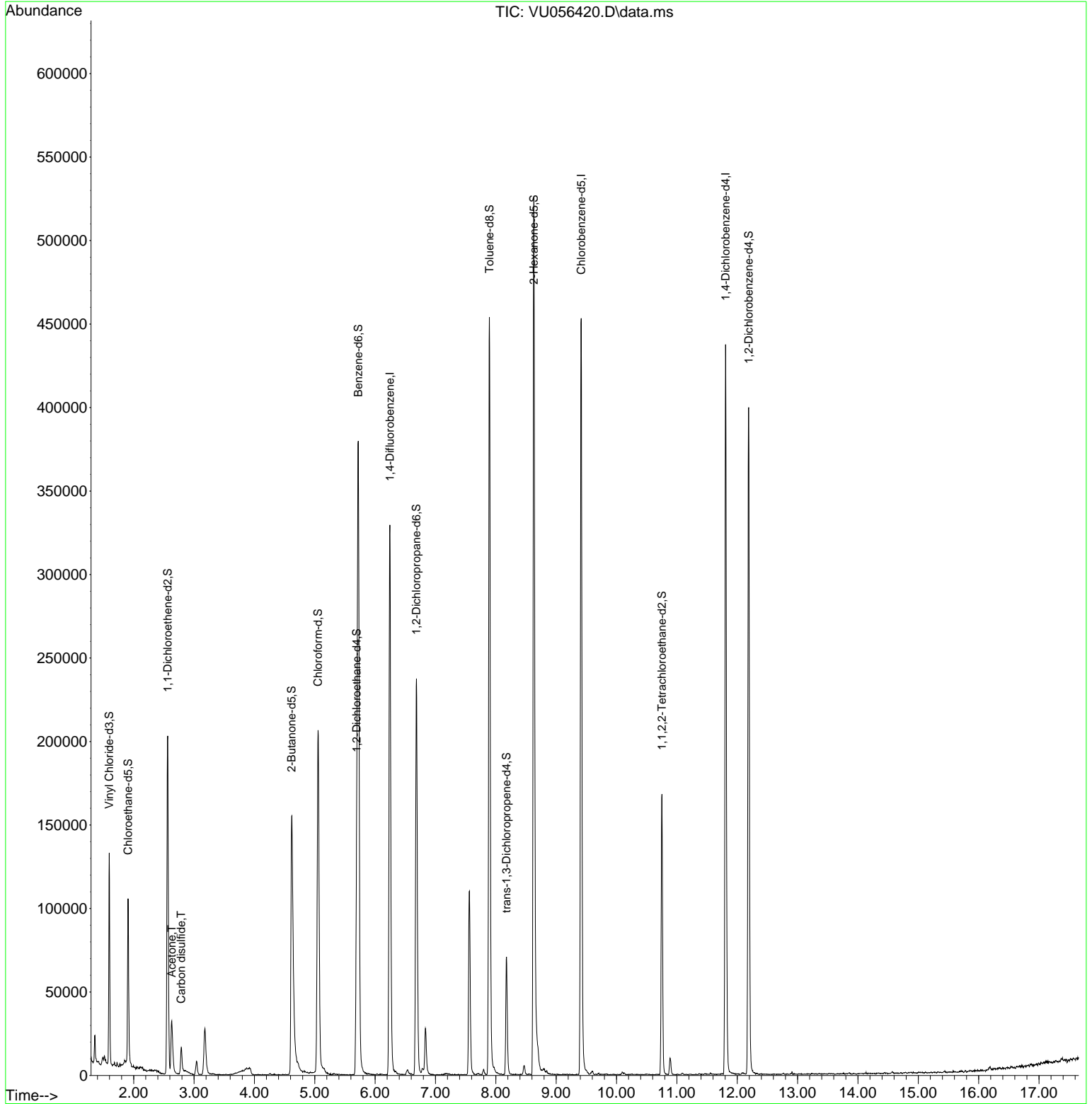
Compound	R.T.	QIon	Response	Conc	Units	Dev(Min)
Internal Standards						
1) 1,4-Difluorobenzene	6.245	114	266551	5.000	ug/L	0.00
28) Chlorobenzene-d5	9.415	117	263613	5.000	ug/L	0.00
58) 1,4-Dichlorobenzene-d4	11.807	152	118127	5.000	ug/L	0.00
System Monitoring Compounds						
4) Vinyl Chloride-d3	1.595	65	88057	4.417	ug/L	0.00
Spiked Amount	5.000	Range 40 - 130	Recovery	=	88.400%	
7) Chloroethane-d5	1.907	69	69578	4.552	ug/L	0.00
Spiked Amount	5.000	Range 65 - 130	Recovery	=	91.000%	
11) 1,1-Dichloroethene-d2	2.563	65	38765	4.406	ug/L	0.00
Spiked Amount	5.000	Range 60 - 125	Recovery	=	88.200%	
20) 2-Butanone-d5	4.618	46	224647	56.508	ug/L	0.00
Spiked Amount	50.000	Range 40 - 130	Recovery	=	113.020%	
24) Chloroform-d	5.055	84	189997	4.927	ug/L	0.00
Spiked Amount	5.000	Range 70 - 125	Recovery	=	98.600%	
26) 1,2-Dichloroethane-d4	5.695	65	95116	5.338	ug/L	0.00
Spiked Amount	5.000	Range 70 - 130	Recovery	=	106.800%	
32) Benzene-d6	5.721	84	367786	4.683	ug/L	0.00
Spiked Amount	5.000	Range 70 - 125	Recovery	=	93.600%	
36) 1,2-Dichloropropane-d6	6.685	67	113126	4.779	ug/L	0.00
Spiked Amount	5.000	Range 60 - 140	Recovery	=	95.600%	
41) Toluene-d8	7.894	98	312348	4.504	ug/L	0.00
Spiked Amount	5.000	Range 70 - 130	Recovery	=	90.000%	
43) trans-1,3-Dichloroprop...	8.177	79	43062	4.743	ug/L	0.00
Spiked Amount	5.000	Range 55 - 130	Recovery	=	94.800%	
46) 2-Hexanone-d5	8.630	63	178862	50.134	ug/L	0.00
Spiked Amount	50.000	Range 45 - 130	Recovery	=	100.260%	
56) 1,1,2,2-Tetrachloroeth...	10.753	84	85188	5.036	ug/L	0.00
Spiked Amount	5.000	Range 65 - 120	Recovery	=	100.800%	
66) 1,2-Dichlorobenzene-d4	12.190	152	106518	4.881	ug/L	0.00
Spiked Amount	5.000	Range 80 - 120	Recovery	=	97.600%	
Target Compounds						
13) Acetone	2.631	43	42494	12.550	ug/L	97
14) Carbon disulfide	2.788	76	19227	0.362	ug/L	96

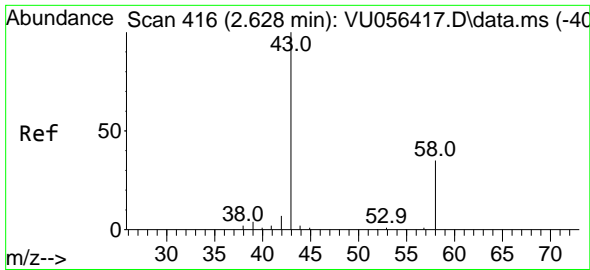
(#) = qualifier out of range (m) = manual integration (+) = signals summed

Data Path : Z:\voasrv\HPCHEM1\MSVOA_U\Data\VU111623\
 Data File : VU056420.D
 Acq On : 17 Nov 2023 01:59
 Operator : MD/SY
 Sample : 05333-08
 Misc : 25mL/MSVOA_U/WATER
 ALS Vial : 30 Sample Multiplier: 1

Instrument :
 MSVOA_U
 ClientSampleId :
 YCG93

Quant Time: Nov 17 04:31:28 2023
 Quant Method : Z:\voasrv\HPCHEM1\MSVOA_U\Method\SFAMUTR111323WMA.M
 Quant Title : TRACE VOA SFAM1.0
 QLast Update : Fri Nov 17 04:03:21 2023
 Response via : Initial Calibration

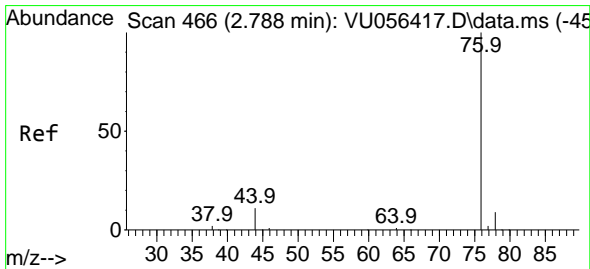
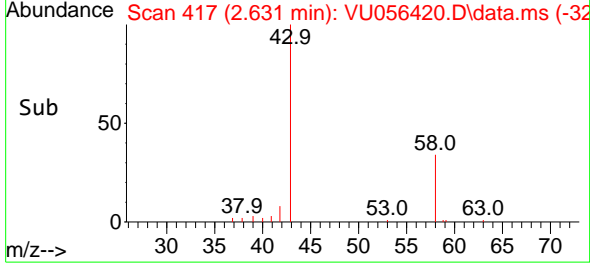
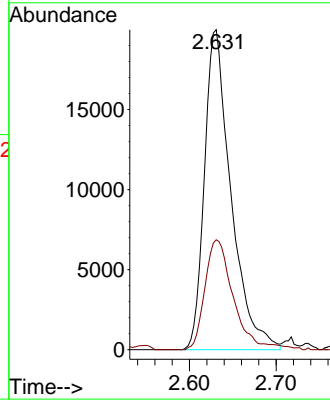
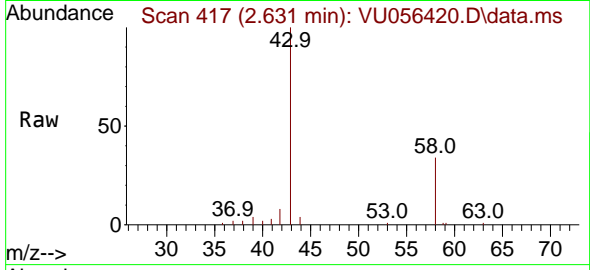




#13
 Acetone
 Concen: 12.550 ug/L
 RT: 2.631 min Scan# 417
 Delta R.T. 0.003 min
 Lab File: VU056420.D
 Acq: 17 Nov 2023 01:59

Instrument : MSVOA_U
 ClientSampleId : YCG93

Tgt Ion: 43 Resp: 42494
 Ion Ratio Lower Upper
 43 100
 58 36.9 0.0 70.0



#14
 Carbon disulfide
 Concen: 0.362 ug/L
 RT: 2.788 min Scan# 466
 Delta R.T. -0.000 min
 Lab File: VU056420.D
 Acq: 17 Nov 2023 01:59

Tgt Ion: 76 Resp: 19227
 Ion Ratio Lower Upper
 76 100
 78 9.8 6.8 10.2

