

Data Path : Z:\VOASRV\HPCHEM1\MSVOA U\DATA\VU111720\
 Data File : VU041277.D
 Acq On : 17 Nov 2020 13:40
 Operator : SY/MD
 Sample : L4759-12
 Misc : 25.0mL/MSVOA U/WATER
 ALS Vial : 11 Sample Multiplier: 1

Instrument :
 MSVOA_U
 ClientSampleId :
 H4429

Quant Time: Nov 17 23:05:53 2020
 Quant Method : Z:\VOASRV\HPCHEM1\MSVOA_U\METHOD\SOMUTR111620WMA.M
 Quant Title : TRACE VOA SOM01.0
 QLast Update : Tue Nov 17 22:32:58 2020
 Response via : Initial Calibration

Internal Standards	R.T.	QIon	Response	Conc	Units	Dev(Min)
1) 1,4-Difluorobenzene	6.26	114	68011	5.00	ug/L	0.00
28) Chlorobenzene-d5	9.42	117	73067	5.00	ug/L	0.00
60) 1,4-Dichlorobenzene-d4	11.81	152	29988	5.00	ug/L	0.00

System Monitoring Compounds

4) Vinyl Chloride-d3	1.60	65	24384	4.87	ug/L	0.00
Spiked Amount	5.000	Range	40 - 130	Recovery	=	97.40%
7) Chloroethane-d5	1.92	69	22011	5.14	ug/L	0.00
Spiked Amount	5.000	Range	65 - 130	Recovery	=	102.80%
11) 1,1-Dichloroethene-d2	2.58	63	36829	3.56	ug/L	0.00
Spiked Amount	5.000	Range	60 - 125	Recovery	=	71.20%
20) 2-Butanone-d5	4.65	46	94797	45.96	ug/L	0.00
Spiked Amount	50.000	Range	40 - 130	Recovery	=	91.92%
24) Chloroform-d	5.08	84	55486	5.13	ug/L	0.00
Spiked Amount	5.000	Range	70 - 125	Recovery	=	102.60%
26) 1,2-Dichloroethane-d4	5.72	65	34107	4.83	ug/L	0.00
Spiked Amount	5.000	Range	70 - 130	Recovery	=	96.60%
32) Benzene-d6	5.75	84	97407	4.95	ug/L	0.00
Spiked Amount	5.000	Range	70 - 125	Recovery	=	99.00%
36) 1,2-Dichloropropane-d6	6.70	67	33982	5.01	ug/L	0.00
Spiked Amount	5.000	Range	60 - 140	Recovery	=	100.20%
41) Toluene-d8	7.91	98	78139	4.21	ug/L	0.00
Spiked Amount	5.000	Range	70 - 130	Recovery	=	84.20%
43) trans-1,3-Dichloropropene-	8.19	79	12115	4.15	ug/L	0.00
Spiked Amount	5.000	Range	55 - 130	Recovery	=	83.00%
46) 2-Hexanone-d5	8.64	63	66183	42.41	ug/L	0.00
Spiked Amount	50.000	Range	45 - 130	Recovery	=	84.82%
57) 1,1,2,2-Tetrachloroethane-	10.75	84	29868	4.53	ug/L	0.00
Spiked Amount	5.000	Range	65 - 120	Recovery	=	90.60%
64) 1,2-Dichlorobenzene-d4	12.19	152	30652	5.24	ug/L	0.00
Spiked Amount	5.000	Range	80 - 120	Recovery	=	104.80%

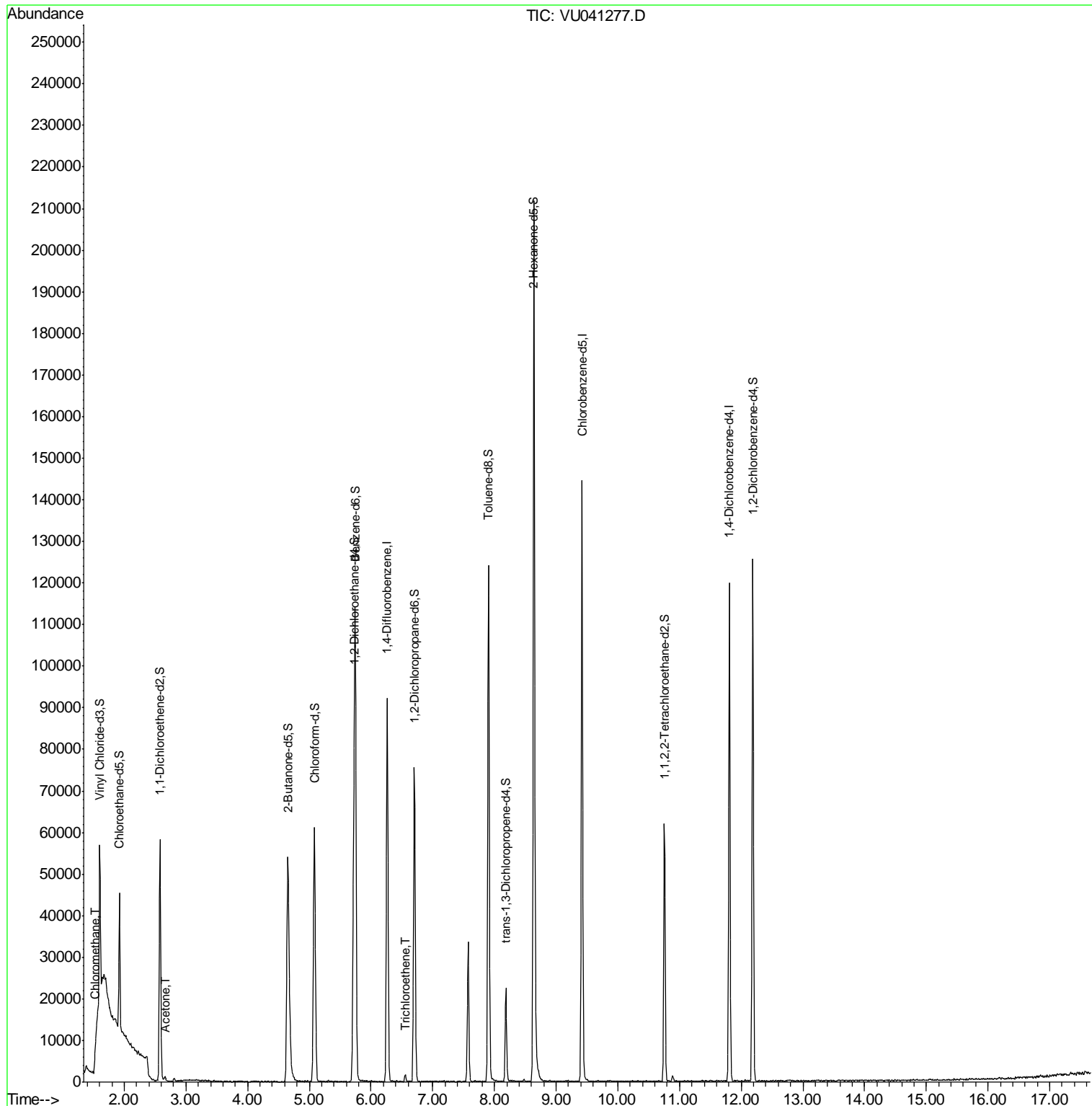
Target Compounds					Ovalue
3) Chloromethane	1.52	50	769	0.127 ug/L	99
13) Acetone	2.66	43	1665	1.217 ug/L	93
34) Trichloroethene	6.56	95	761	0.142 ug/L	94

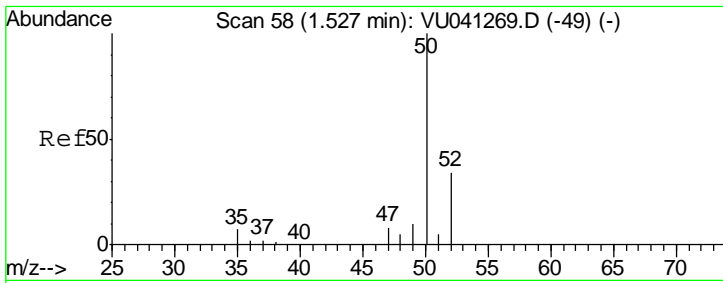
(#) = qualifier out of range (m) = manual integration (+) = signals summed

Data Path : Z:\VOASRV\HPCHEM1\MSVOA U\DATA\VU111720\
 Data File : VU041277.D
 Acq On : 17 Nov 2020 13:40
 Operator : SY/MD
 Sample : L4759-12
 Misc : 25.0mL/MSVOA U/WATER
 ALS Vial : 11 Sample Multiplier: 1

Instrument :
 MSVOA_U
 ClientSampled :
 H4429

Quant Time: Nov 17 23:05:53 2020
 Quant Method : Z:\VOASRV\HPCHEM1\MSVOA_U\METHOD\SOMUTR111620WMA.M
 Quant Title : TRACE VOA SOM01.0
 QLast Update : Tue Nov 17 22:32:58 2020
 Response via : Initial Calibration

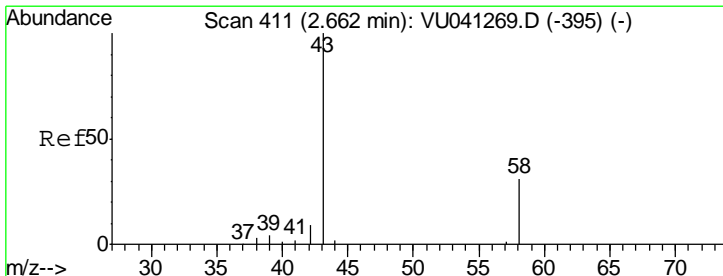
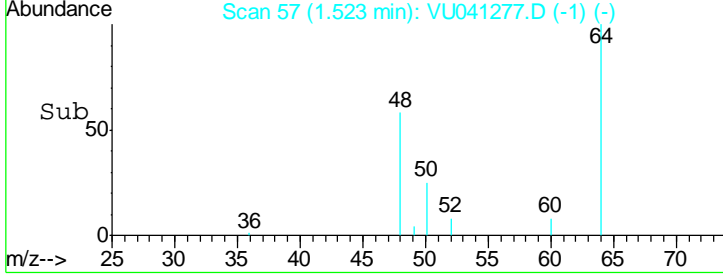
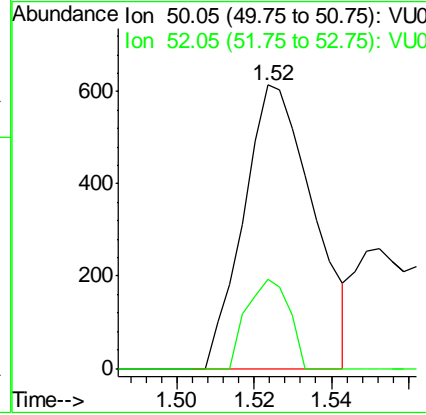
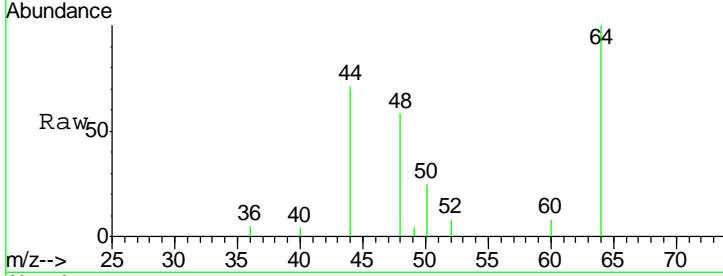




#3
 Chloromethane
 Concen: 0.127 ug/L
 RT: 1.52 min Scan# 57
 Delta R.T. -0.00 min
 Lab File: VU041277.D
 Acq: 17 Nov 2020 13:40

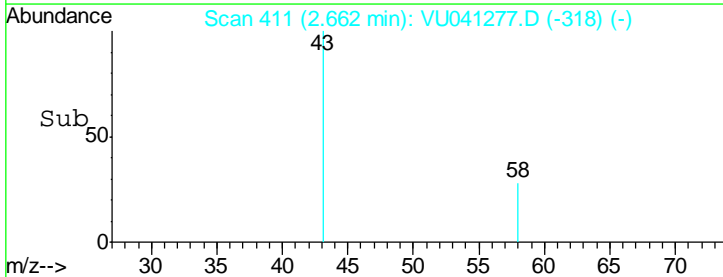
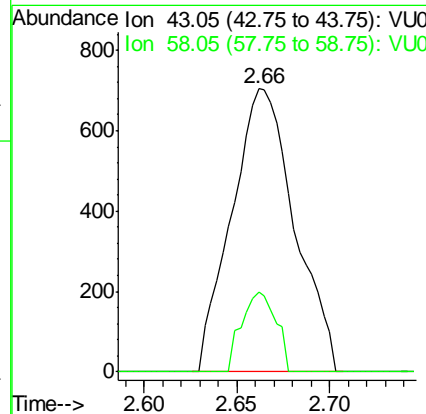
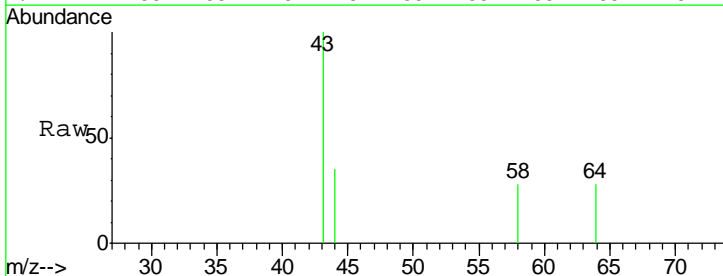
Instrument :
 MSVOA_U
 ClientSampleId :
 H4429

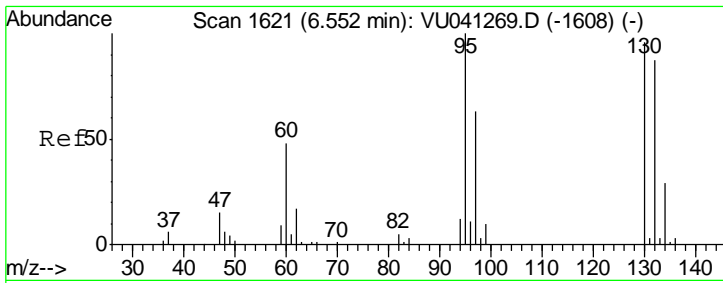
Tgt Ion	Resp	Lower	Upper
50	100		
52	31.3	22.4	41.6



#13
 Acetone
 Concen: 1.217 ug/L
 RT: 2.66 min Scan# 411
 Delta R.T. 0.00 min
 Lab File: VU041277.D
 Acq: 17 Nov 2020 13:40

Tgt Ion	Resp	Lower	Upper
43	100		
58	15.3	0.0	25.4



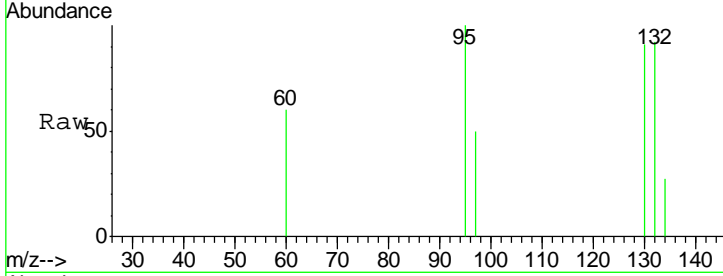


#34
 Trichloroethene
 Concen: 0.142 ug/L
 RT: 6.56 min Scan# 1622
 Delta R.T. 0.00 min
 Lab File: VU041277.D
 Acq: 17 Nov 2020 13:40

Instrument :
 MSVOA_U
 ClientSampled :
 H4429

Tot Ion: 95 Resp: 761

Ion	Ratio	Lower	Upper
95	100		
97	50.1	45.6	84.6
132	91.8	64.8	120.4
130	90.8	64.8	120.4



Abundance Ion 95.00 (94.70 to 95.70): VU0
 Ion 96.95 (96.65 to 97.65): VU0
 Ion 131.95 (131.65 to 132.65): V
 Ion 129.95 (129.65 to 130.65): V

