

Data Path : Z:\VOASRV\HPCHEM1\MSVOA U\DATA\VU111819\
 Data File : VU035756.D
 Acq On : 18 Nov 2019 20:27
 Operator : JC/SP
 Sample : K5910-19
 Misc : 25.0mL/MSVOA U/WATER
 ALS Vial : 27 Sample Multiplier: 1

Instrument :
 MSVOA_U
 ClientSampled :

Quant Time: Nov 19 00:38:10 2019
 Quant Method : Z:\VOASRV\HPCHEM1\MSVOA_U\METHOD\SOMUTR110419WMA.M
 Quant Title : TRACE VOA SOM01.0
 QLast Update : Tue Nov 19 00:32:50 2019
 Response via : Initial Calibration

Internal Standards	R.T.	QIon	Response	Conc	Units	Dev(Min)
1) 1,4-Difluorobenzene	6.29	114	178977	5.00	ug/L	0.00
28) Chlorobenzene-d5	9.45	117	220072	5.00	ug/L	0.00
60) 1,4-Dichlorobenzene-d4	11.84	152	70067	5.00	ug/L	0.00

System Monitoring Compounds

4) Vinyl Chloride-d3	1.62	65	85088	4.62	ug/L	0.00
Spiked Amount	5.000	Range	40 - 130	Recovery	=	92.40%
7) Chloroethane-d5	1.93	69	81222	5.39	ug/L	0.00
Spiked Amount	5.000	Range	65 - 130	Recovery	=	107.80%
11) 1,1-Dichloroethene-d2	2.59	63	110204	3.55	ug/L	0.00
Spiked Amount	5.000	Range	60 - 125	Recovery	=	71.00%
20) 2-Butanone-d5	4.70	46	247515	60.85	ug/L	0.00
Spiked Amount	50.000	Range	40 - 130	Recovery	=	121.70%
24) Chloroform-d	5.11	84	160064	5.45	ug/L	0.00
Spiked Amount	5.000	Range	70 - 125	Recovery	=	109.00%
26) 1,2-Dichloroethane-d4	5.75	65	88279	5.72	ug/L	0.00
Spiked Amount	5.000	Range	70 - 130	Recovery	=	114.40%
32) Benzene-d6	5.77	84	313481	4.53	ug/L	0.00
Spiked Amount	5.000	Range	70 - 125	Recovery	=	90.60%
36) 1,2-Dichloropropane-d6	6.74	67	109302	4.88	ug/L	0.00
Spiked Amount	5.000	Range	60 - 140	Recovery	=	97.60%
41) Toluene-d8	7.93	98	249972	3.81	ug/L	0.00
Spiked Amount	5.000	Range	70 - 130	Recovery	=	76.20%
43) trans-1,3-Dichloropropene-	8.22	79	36300	4.06	ug/L	0.00
Spiked Amount	5.000	Range	55 - 130	Recovery	=	81.20%
46) 2-Hexanone-d5	8.70	63	174599	49.80	ug/L	0.02
Spiked Amount	50.000	Range	45 - 130	Recovery	=	99.60%
57) 1,1,2,2-Tetrachloroethane-	10.79	84	98464	5.24	ug/L	0.00
Spiked Amount	5.000	Range	65 - 120	Recovery	=	104.80%
64) 1,2-Dichlorobenzene-d4	12.22	152	75311	5.42	ug/L	0.00
Spiked Amount	5.000	Range	80 - 120	Recovery	=	108.40%

Target Compounds

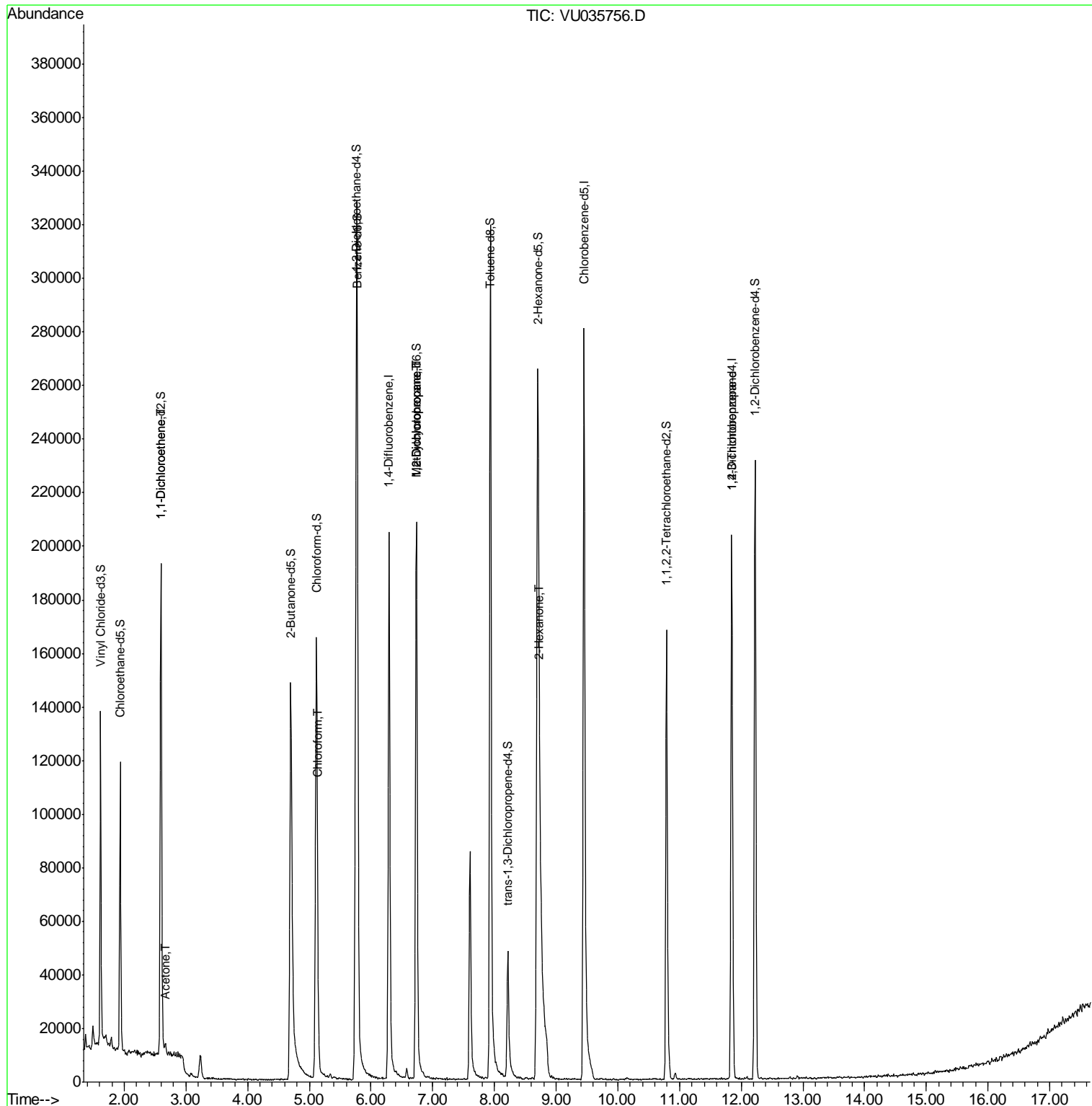
Target Compounds	R.T.	QIon	Response	Conc	Units	Ovalue
12) 1,1-Dichloroethene	2.60	96	1080	0.069	ug/L #	1
13) Acetone	2.67	43	2868	0.978	ug/L	89
25) Chloroform	5.14	83	10020	0.306	ug/L	97
35) Methylcyclohexane	6.74	83	24054	0.797	ug/L #	18
37) 1,2-Dichloropropane	6.74	63	11575	0.567	ug/L #	87
48) 2-Hexanone	8.74	43	15574	1.868	ug/L #	84
59) 1,2,3-Trichloropropane	11.84	75	7630	0.565	ug/L	93

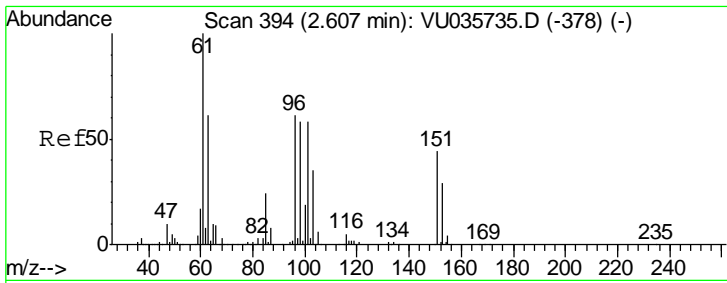
(#) = qualifier out of range (m) = manual integration (+) = signals summed

Data Path : Z:\VOASRV\HPCHEM1\MSVOA U\DATA\VU111819\
 Data File : VU035756.D
 Acq On : 18 Nov 2019 20:27
 Operator : JC/SP
 Sample : K5910-19
 Misc : 25.0mL/MSVOA U/WATER
 ALS Vial : 27 Sample Multiplier: 1

Instrument :
 MSVOA_U
 ClientSampleId :

Quant Time: Nov 19 00:38:10 2019
 Quant Method : Z:\VOASRV\HPCHEM1\MSVOA_U\METHOD\SOMUTR110419WMA.M
 Quant Title : TRACE VOA SOM01.0
 QLast Update : Tue Nov 19 00:32:50 2019
 Response via : Initial Calibration

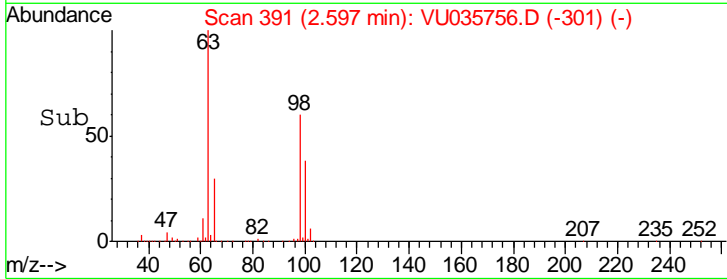
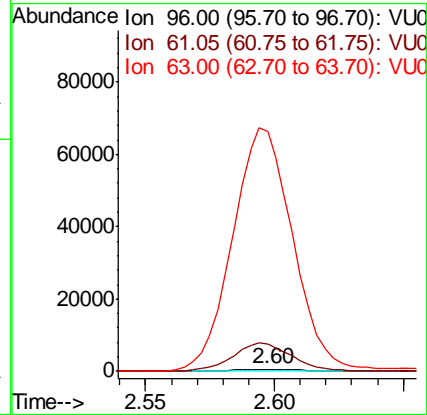
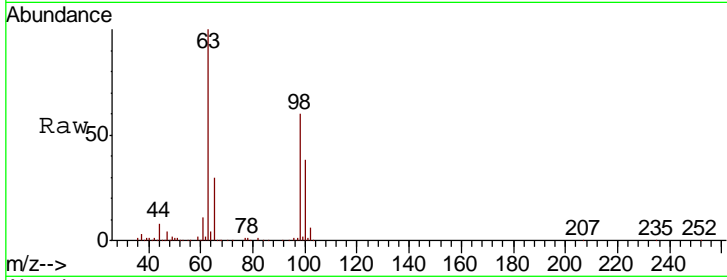




#12
 1,1-Dichloroethene
 Concen: 0.069 ug/L
 RT: 2.60 min Scan# 391
 Delta R.T. -0.01 min
 Lab File: VU035756.D
 Acq: 18 Nov 2019 20:27

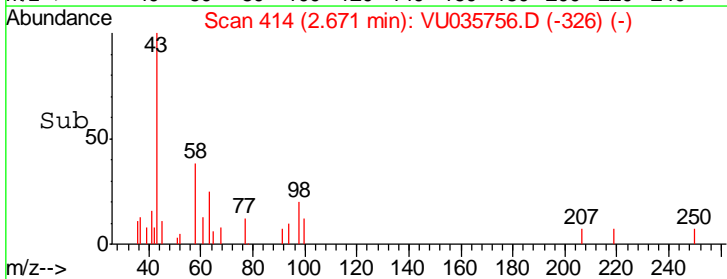
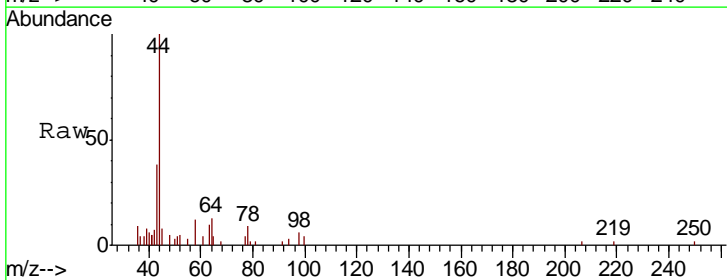
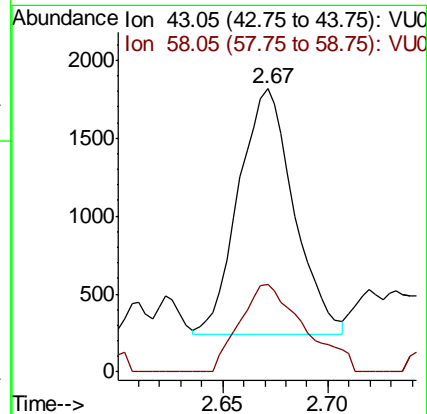
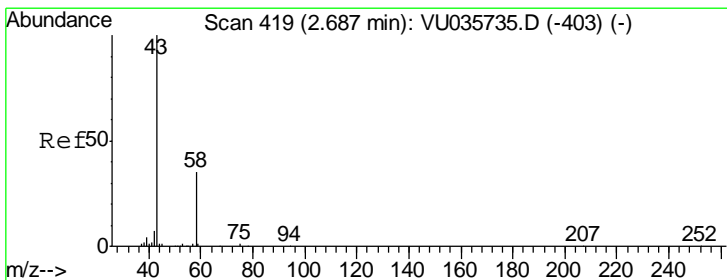
Instrument :
 MSVOA_U
 ClientSampled :

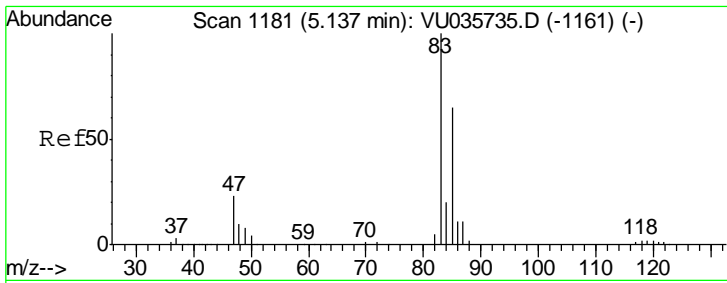
Tgt Ion: 96 Resp: 1080
 Ion Ratio Lower Upper
 96 100
 61 1369.0 123.1 228.5#
 63 12090.5 87.8 163.0#



#13
 Acetone
 Concen: 0.978 ug/L
 RT: 2.67 min Scan# 414
 Delta R.T. -0.02 min
 Lab File: VU035756.D
 Acq: 18 Nov 2019 20:27

Tgt Ion: 43 Resp: 2868
 Ion Ratio Lower Upper
 43 100
 58 41.6 0.0 69.8

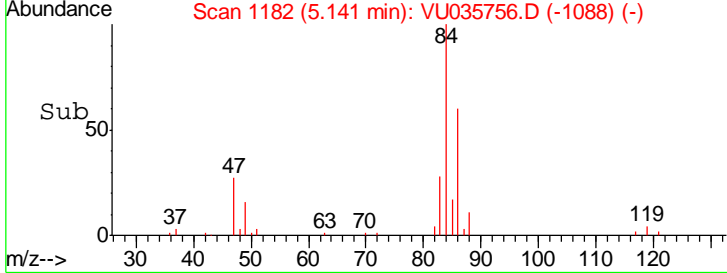
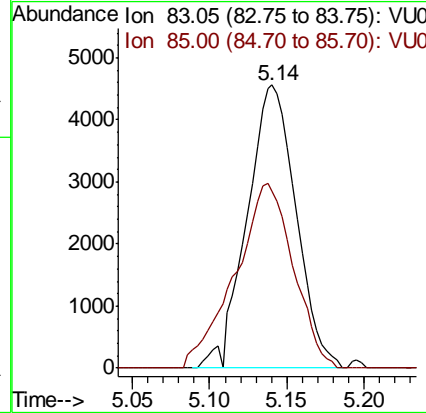
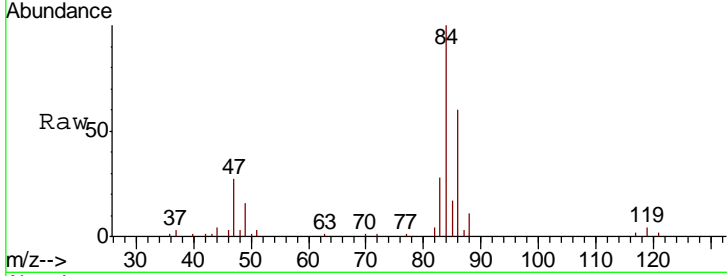




#25
 Chloroform
 Concen: 0.306 ug/L
 RT: 5.14 min Scan# 1182
 Delta R.T. 0.00 min
 Lab File: VU035756.D
 Acq: 18 Nov 2019 20:27

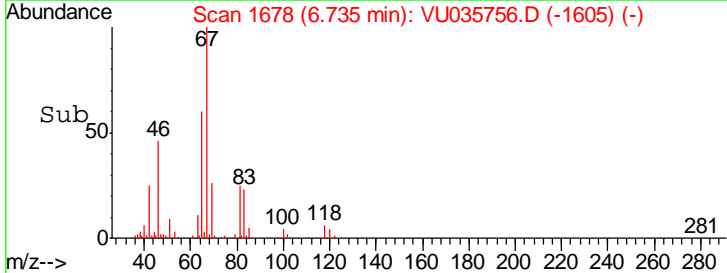
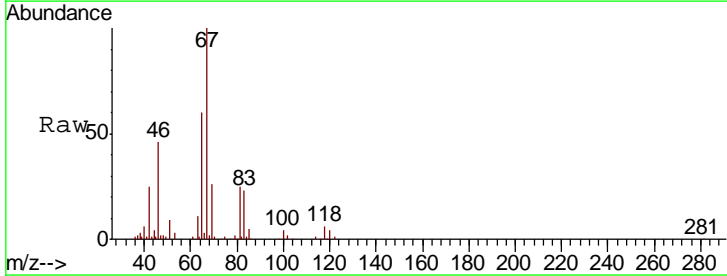
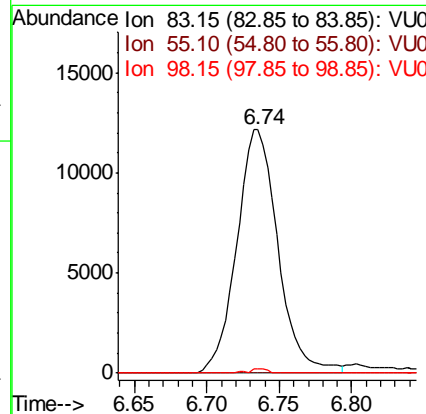
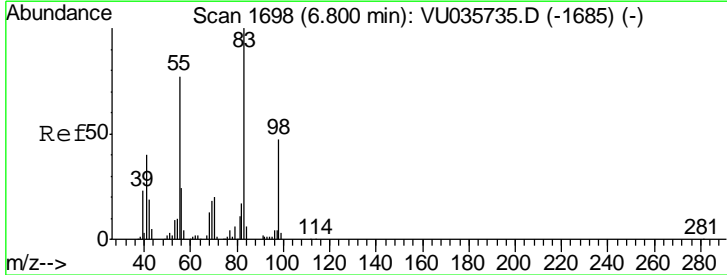
Instrument :
 MSVOA_U
 ClientSampled :

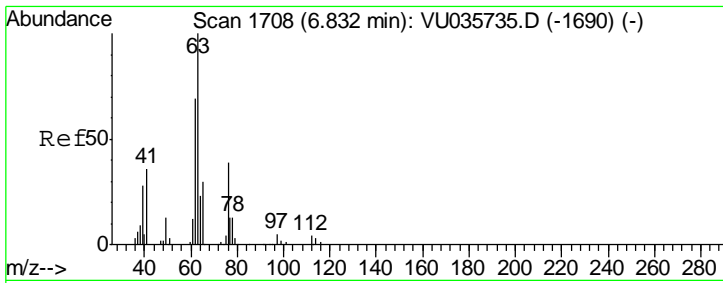
Tgt Ion	Resp	Lower	Upper
83	10020		
83	100		
85	62.6	45.4	84.2



#35
 Methylcyclohexane
 Concen: 0.797 ug/L
 RT: 6.74 min Scan# 1678
 Delta R.T. -0.06 min
 Lab File: VU035756.D
 Acq: 18 Nov 2019 20:27

Tgt Ion	Resp	Lower	Upper
83	24054		
83	100		
55	0.0	62.6	93.8#
98	0.7	37.2	55.8#

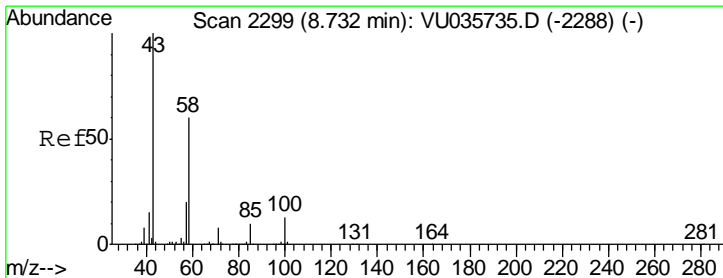
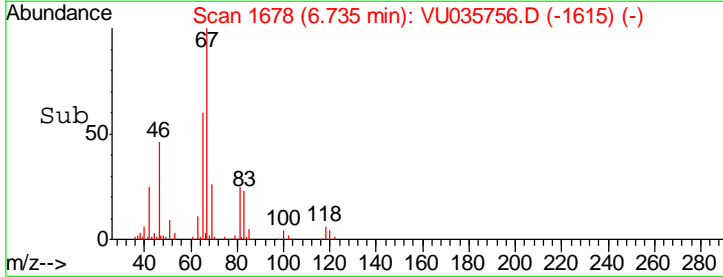
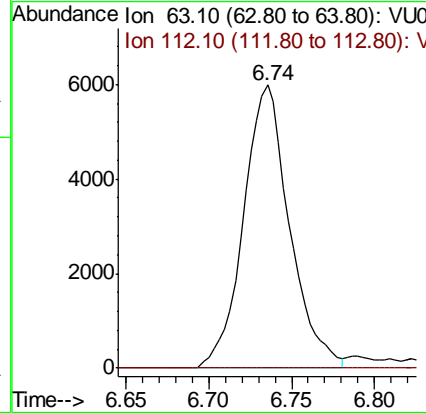
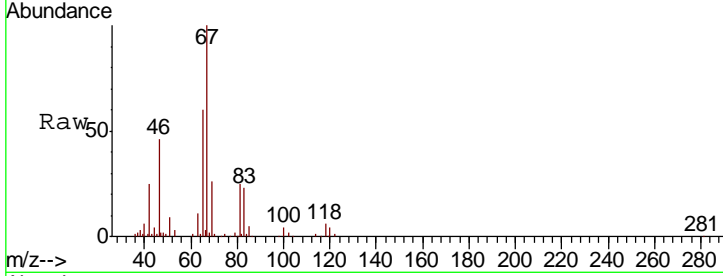




#37
 1,2-Dichloropropane
 Concen: 0.567 ug/L
 RT: 6.74 min Scan# 1678
 Delta R.T. -0.10 min
 Lab File: VU035756.D
 Acq: 18 Nov 2019 20:27

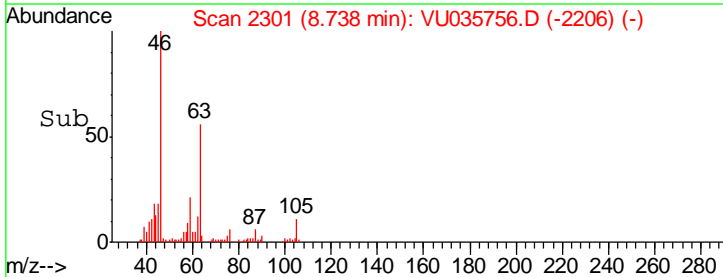
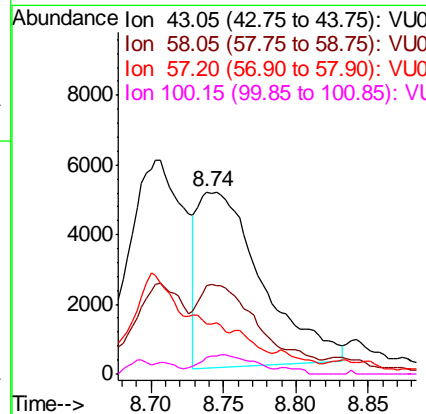
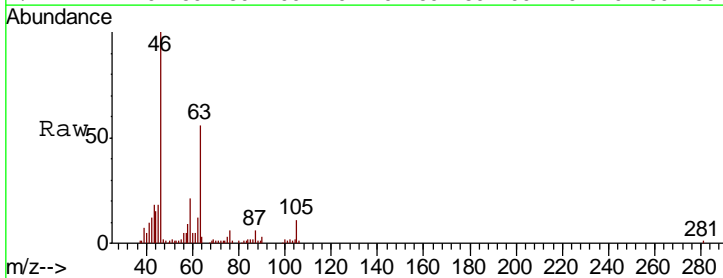
Instrument :
 MSVOA_U
 ClientSampled :

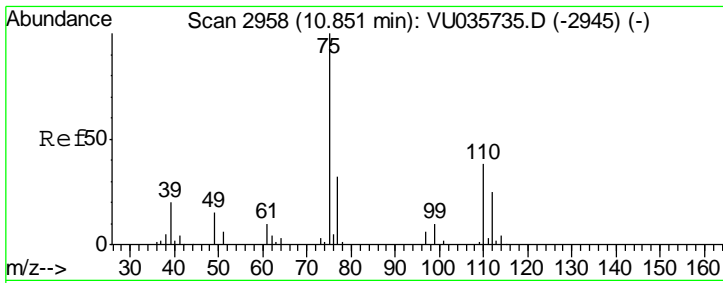
Tgt Ion	Resp	Lower	Upper
63	11575		
63	100		
112	0.0	3.4	5.2#



#48
 2-Hexanone
 Concen: 1.868 ug/L
 RT: 8.74 min Scan# 2301
 Delta R.T. 0.01 min
 Lab File: VU035756.D
 Acq: 18 Nov 2019 20:27

Tgt Ion	Resp	Lower	Upper
43	15574		
43	100		
58	48.7	44.1	66.1
57	0.0	15.1	22.7#
100	8.8	9.4	14.2#





#59
 1,2,3-Trichloropropane
 Concen: 0.565 ug/L
 RT: 11.84 min Scan# 3267
 Delta R.T. 0.99 min
 Lab File: VU035756.D
 Acq: 18 Nov 2019 20:27

Instrument : MSVOA_U
 ClientSampled :

Tot Ion: 75 Resp: 7630

Ion	Ratio	Lower	Upper
75	100		
77	37.4	26.8	40.2

