

Data File : VU028252.D
 Acq On : 19 Nov 2018 14:04
 Operator : MD/SY
 Sample : J5986-14
 Misc : 25.0mL/MSVOA_U/WATER
 ALS Vial : 12 Sample Multiplier: 1

Instrument :
 MSVOA_U
 ClientSampleId :
 H0FL2

Quant Time: Nov 20 07:11:39 2018
 Quant Method : Z:\VOASRV\HPCHEM1\MSVOA_U\METHOD\SOMUTR111718WMA.M
 Quant Title : TRACE VOA SOM01.0
 QLast Update : Tue Nov 20 07:07:24 2018
 Response via : Initial Calibration

Internal Standards	R.T.	QIon	Response	Conc	Units	Dev(Min)
1) 1,4-Difluorobenzene	5.89	114	126809	5.00	ug/L	0.00
28) Chlorobenzene-d5	9.09	117	121805	5.00	ug/L	0.00
60) 1,4-Dichlorobenzene-d4	11.48	152	53334	5.00	ug/L	0.00

System Monitoring Compounds

4) Vinyl Chloride-d3	1.40	65	45946	4.81	ug/L	0.00
Spiked Amount	5.000	Range	40 - 130	Recovery	=	96.20%
7) Chloroethane-d5	1.68	69	39435	4.79	ug/L	0.00
Spiked Amount	5.000	Range	65 - 130	Recovery	=	95.80%
11) 1,1-Dichloroethene-d2	2.28	63	69461	3.66	ug/L	0.00
Spiked Amount	5.000	Range	60 - 125	Recovery	=	73.20%
20) 2-Butanone-d5	4.20	46	135628	42.47	ug/L	0.00
Spiked Amount	50.000	Range	40 - 130	Recovery	=	84.94%
24) Chloroform-d	4.65	84	79964	4.49	ug/L	0.00
Spiked Amount	5.000	Range	70 - 125	Recovery	=	89.80%
26) 1,2-Dichloroethane-d4	5.31	65	45060	4.58	ug/L	0.00
Spiked Amount	5.000	Range	70 - 130	Recovery	=	91.60%
32) Benzene-d6	5.34	84	160825	4.59	ug/L	0.00
Spiked Amount	5.000	Range	70 - 125	Recovery	=	91.80%
36) 1,2-Dichloropropane-d6	6.33	67	58616	4.60	ug/L	0.00
Spiked Amount	5.000	Range	60 - 140	Recovery	=	92.00%
41) Toluene-d8	7.57	98	141571	4.51	ug/L	0.00
Spiked Amount	5.000	Range	70 - 130	Recovery	=	90.20%
43) trans-1,3-Dichloropropene-	7.85	79	15207	3.74	ug/L	0.00
Spiked Amount	5.000	Range	55 - 130	Recovery	=	74.80%
46) 2-Hexanone-d5	8.31	63	96097	39.40	ug/L	0.00
Spiked Amount	50.000	Range	45 - 130	Recovery	=	78.80%
57) 1,1,2,2-Tetrachloroethane-	10.43	84	42344	4.61	ug/L	0.00
Spiked Amount	5.000	Range	65 - 120	Recovery	=	92.20%
64) 1,2-Dichlorobenzene-d4	11.86	152	47369	4.78	ug/L	0.00
Spiked Amount	5.000	Range	80 - 120	Recovery	=	95.60%

Target Compounds

						Qvalue
5) Vinyl chloride	1.40	62	82155	6.383	ug/L	94
8) Chloroethane	1.59	64	811	0.107	ug/L #	58
9) Trichlorofluoromethane	1.89	101	996	0.066	ug/L #	72
10) 1,1,2-Trichloro-1,2,2-trif	2.28	101	894	0.108	ug/L #	44
12) 1,1-Dichloroethene	2.29	96	5506	0.705	ug/L #	1
13) Acetone	2.31	43	6407	2.917	ug/L	51
17) Methyl tert-butyl Ether	3.01	73	484657	20.666	ug/L	97
18) trans-1,2-Dichloroethene	2.98	96	21982	2.643	ug/L	88
19) 1,1-Dichloroethane	3.44	63	30413	1.577	ug/L	98
22) cis-1,2-Dichloroethene	4.23	96	848680	86.339	ug/L	93
25) Chloroform	4.67	83	1484	0.071	ug/L	95
27) 1,2-Dichloroethane	5.42	62	625	0.052	ug/L #	78
33) Benzene	5.39	78	15507	0.386	ug/L	100
34) Trichloroethene	6.19	95	1735730	176.412	ug/L	97
35) Methylcyclohexane	6.33	83	12449	0.803	ug/L #	13
39) cis-1,3-Dichloropropene	7.22	75	1143	0.079	ug/L #	65
47) Tetrachloroethene	8.22	164	39612	5.800	ug/L	97

Data Path : Z:\VOASRV\HPCHEM1\MSVOA_U\DATA\VU111918\
Quantitation Report (Not Reviewed)

Data File : VU028252.D
Acq On : 19 Nov 2018 14:04
Operator : MD/SY
Sample : J5986-14
Misc : 25.0mL/MSVOA_U/WATER
ALS Vial : 12 Sample Multiplier: 1

Instrument :
MSVOA_U
ClientSampleId :
H0FL2

Quant Time: Nov 20 07:11:39 2018
Quant Method : Z:\VOASRV\HPCHEM1\MSVOA_U\METHOD\SOMUTR111718WMA.M
Quant Title : TRACE VOA SOM01.0
QLast Update : Tue Nov 20 07:07:24 2018
Response via : Initial Calibration

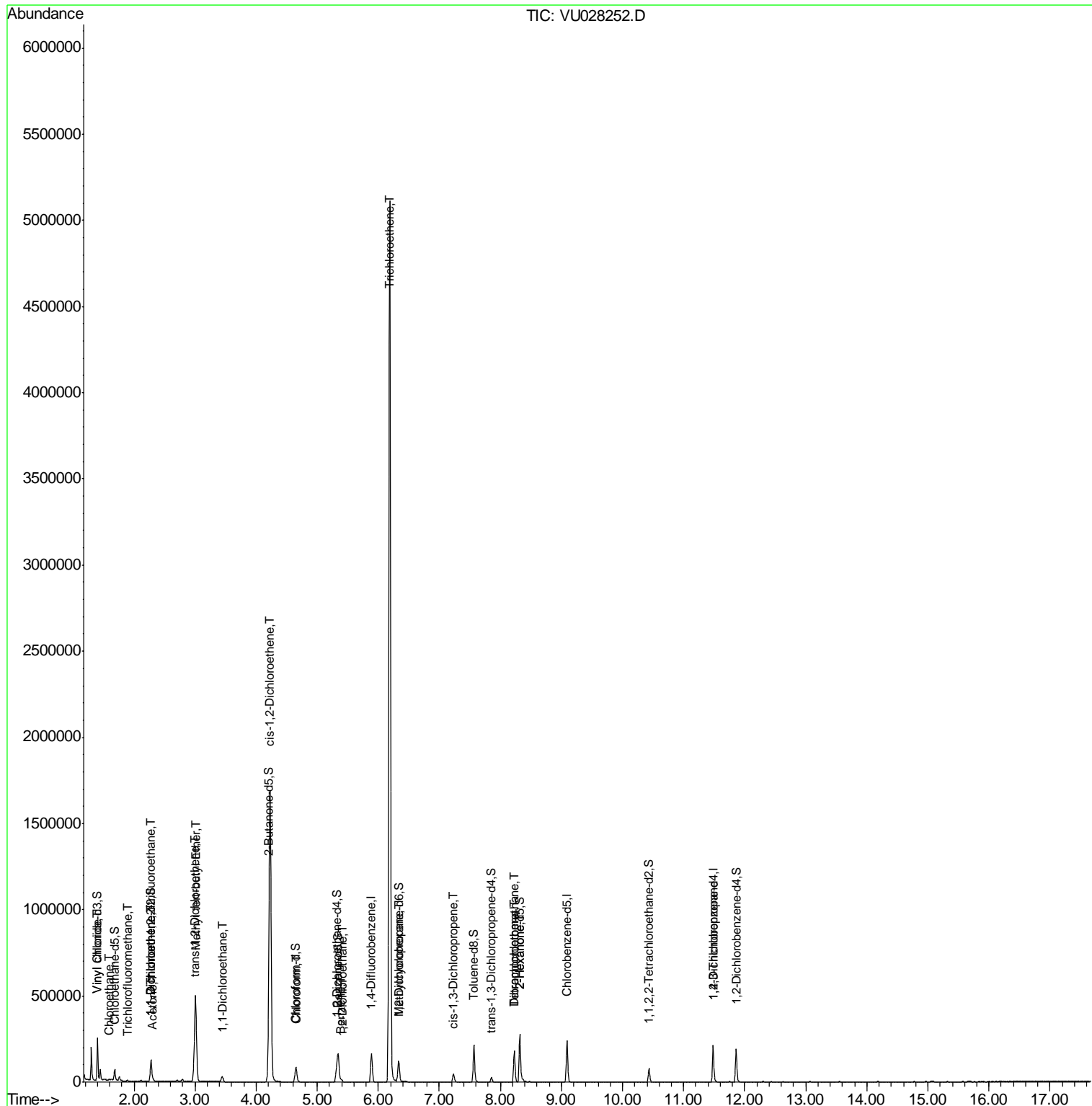
Internal Standards	R.T.	QIon	Response	Conc	Units	Dev(Min)
48) 2-Hexanone	8.32	43	12533	2.144	ug/L #	77
49) Dibromochloromethane	8.23	129	37389	5.331	ug/L #	10
59) 1,2,3-Trichloropropane	11.48	75	7695	1.161	ug/L	97

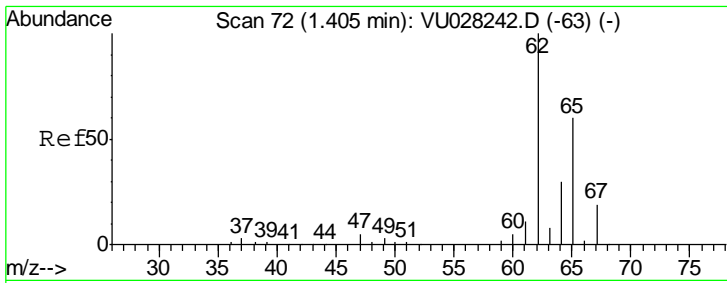
(#) = qualifier out of range (m) = manual integration (+) = signals summed

Data File : VU028252.D
Acq On : 19 Nov 2018 14:04
Operator : MD/SY
Sample : J5986-14
Misc : 25.0mL/MSVOA_U/WATER
ALS Vial : 12 Sample Multiplier: 1

Instrument :
MSVOA_U
Client Sampled :
H0FL2

Quant Time: Nov 20 07:11:39 2018
Quant Method : Z:\VOASRV\HPCHEM1\MSVOA_U\METHOD\SOMUTR111718WMA.M
Quant Title : TRACE VOA SOM01.0
QLast Update : Tue Nov 20 07:07:24 2018
Response via : Initial Calibration

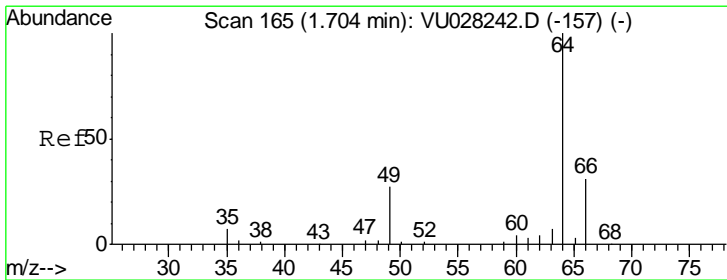
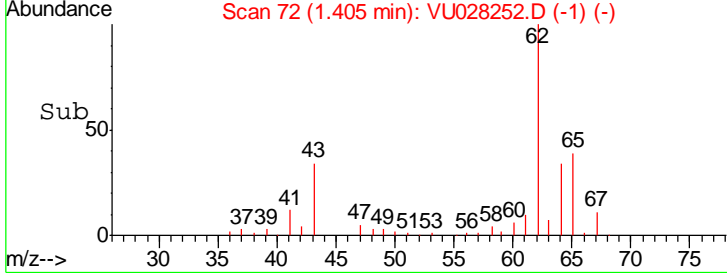
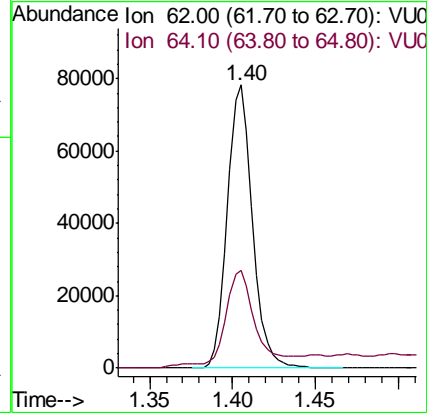
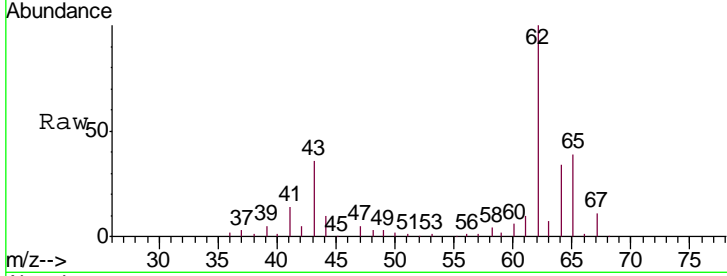




#5
 Vinyl chloride
 Concen: 6.383 ug/L
 RT: 1.40 min Scan# 72
 Delta R.T. 0.00 min
 Lab File: VU028252.D
 Acq: 19 Nov 2018 14:04

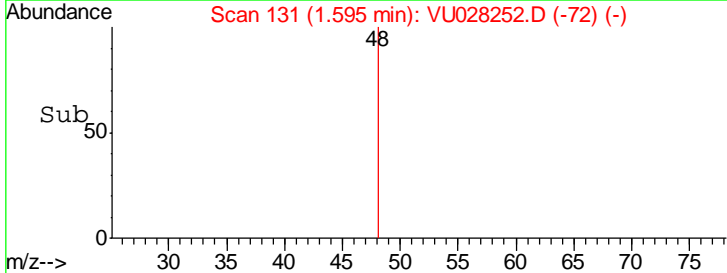
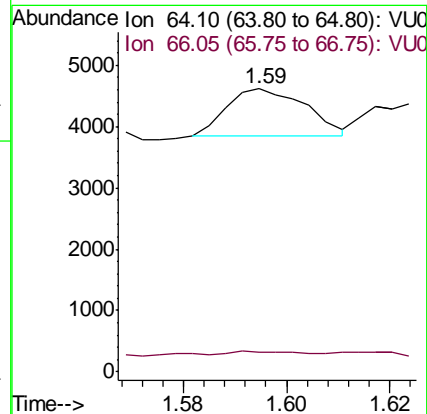
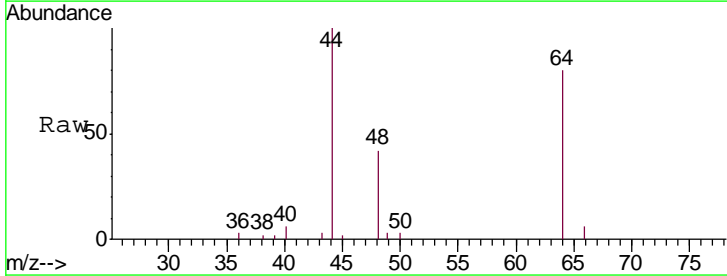
Instrument : MSVOA_U
 ClientSampled : H0FL2

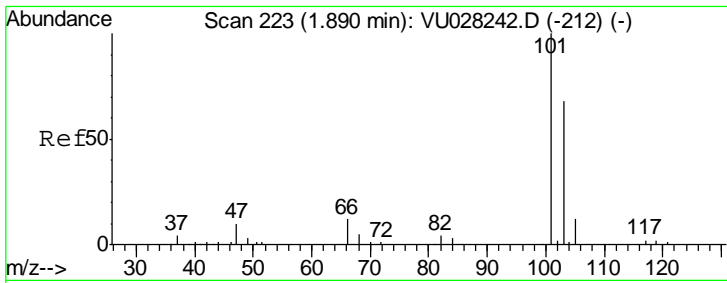
Tgt Ion	Resp	Lower	Upper
62	100		
64	34.4	21.7	40.3



#8
 Chloroethane
 Concen: 0.107 ug/L
 RT: 1.59 min Scan# 131
 Delta R.T. -0.11 min
 Lab File: VU028252.D
 Acq: 19 Nov 2018 14:04

Tgt Ion	Resp	Lower	Upper
64	100		
66	6.9	20.7	38.5#

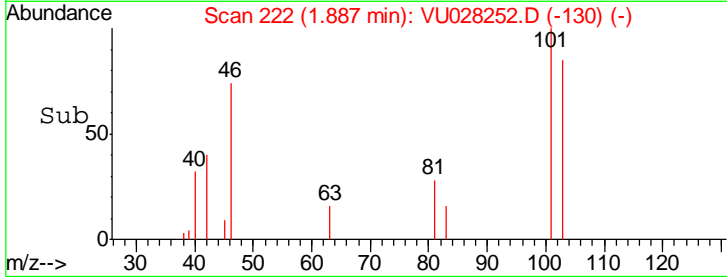
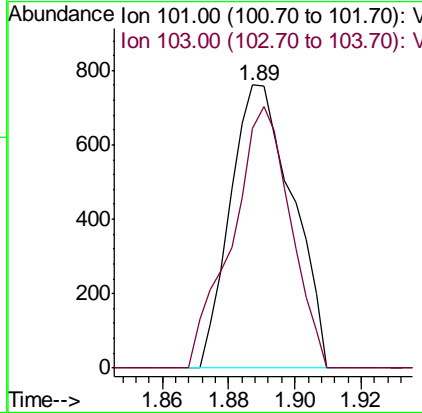
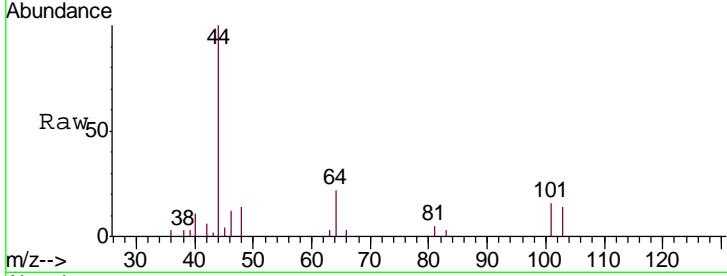




#9
 Trichlorofluoromethane
 Concen: 0.066 ug/L
 RT: 1.89 min Scan# 222
 Delta R.T. -0.00 min
 Lab File: VU028252.D
 Acq: 19 Nov 2018 14:04

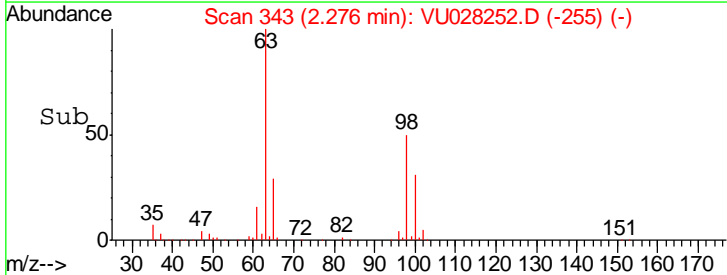
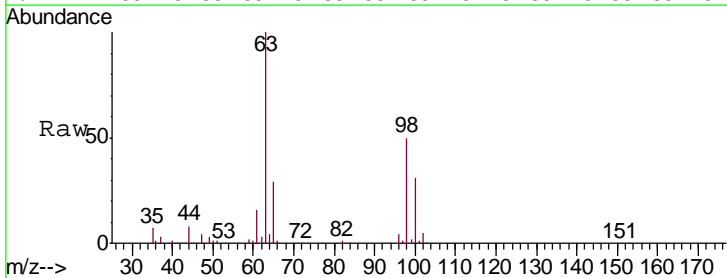
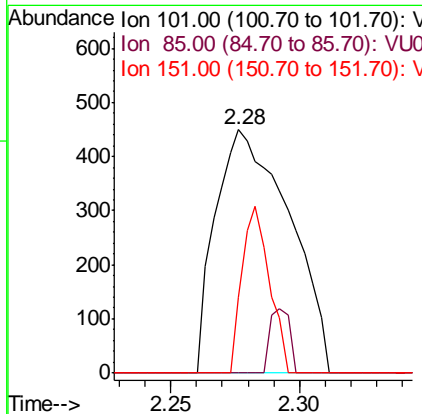
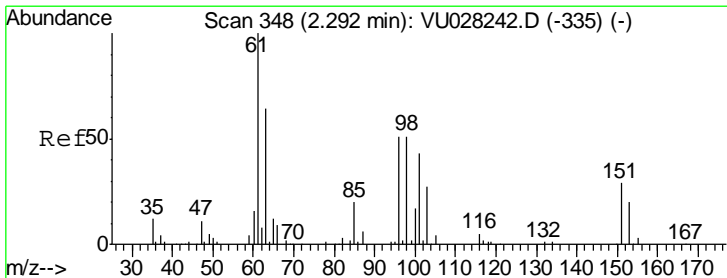
Instrument :
 MSVOA_U
 ClientSampled :
 H0FL2

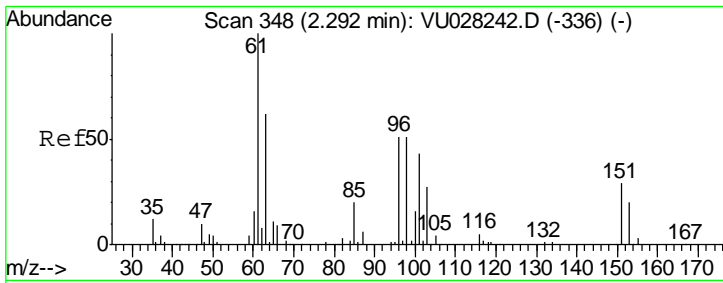
Tgt Ion:101 Resp: 996
 Ion Ratio Lower Upper
 101 100
 103 86.5 51.7 77.5#



#10
 1,1,2-Trichloro-1,2,2-trifluoroethane
 Concen: 0.108 ug/L
 RT: 2.28 min Scan# 343
 Delta R.T. -0.02 min
 Lab File: VU028252.D
 Acq: 19 Nov 2018 14:04

Tgt Ion:101 Resp: 894
 Ion Ratio Lower Upper
 101 100
 85 7.2 37.4 56.2#
 151 25.7 55.0 82.4#

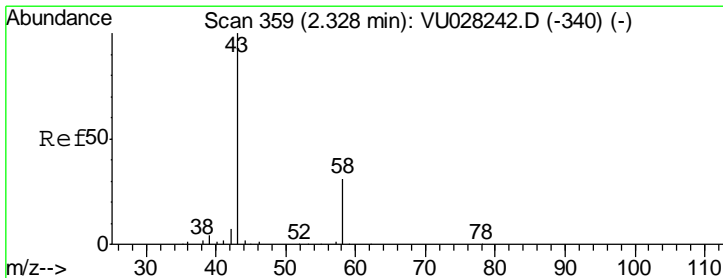
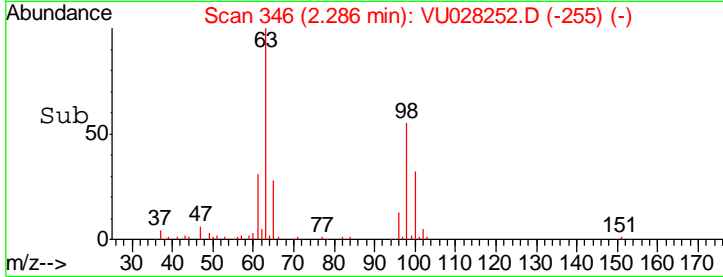
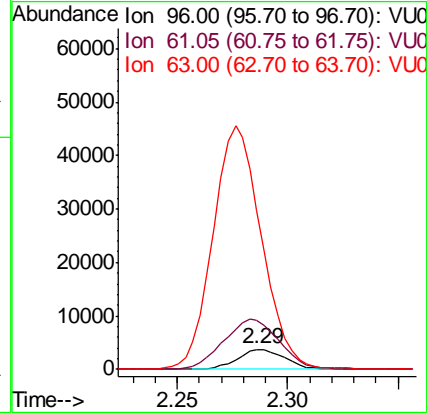
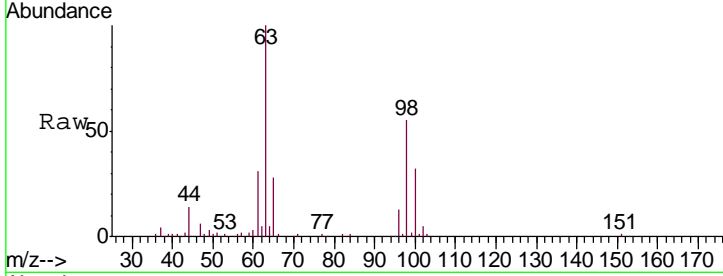




#12
 1,1-Dichloroethene
 Concen: 0.705 ug/L
 RT: 2.29 min Scan# 346
 Delta R.T. -0.01 min
 Lab File: VU028252.D
 Acq: 19 Nov 2018 14:04

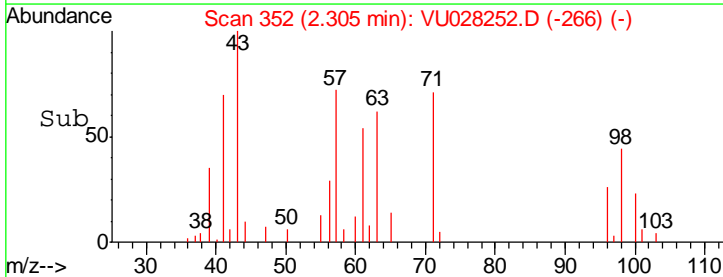
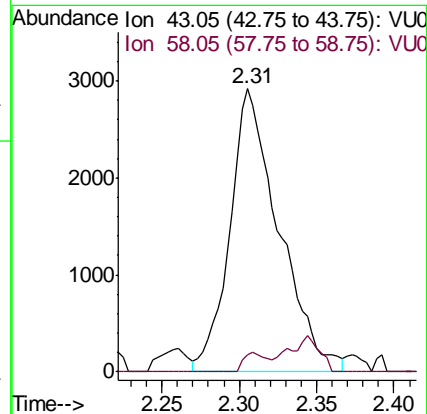
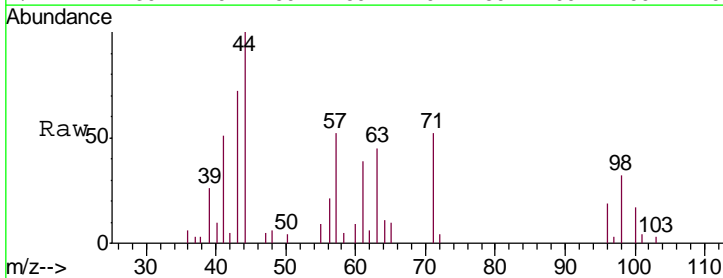
Instrument : MSVOA_U
 ClientSampled : H0FL2

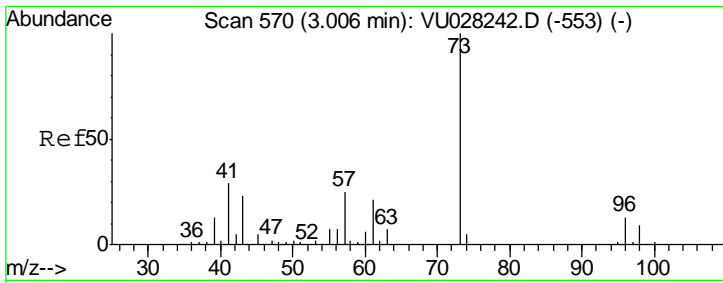
Tgt Ion	Resp	Lower	Upper
96	5506		
61	245.9	145.5	270.1
63	797.0	98.6	183.2#



#13
 Acetone
 Concen: 2.917 ug/L
 RT: 2.31 min Scan# 352
 Delta R.T. -0.02 min
 Lab File: VU028252.D
 Acq: 19 Nov 2018 14:04

Tgt Ion	Resp	Lower	Upper
43	6407		
58	3.3	0.0	58.6

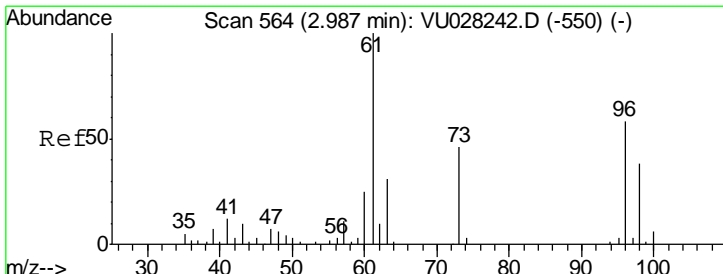
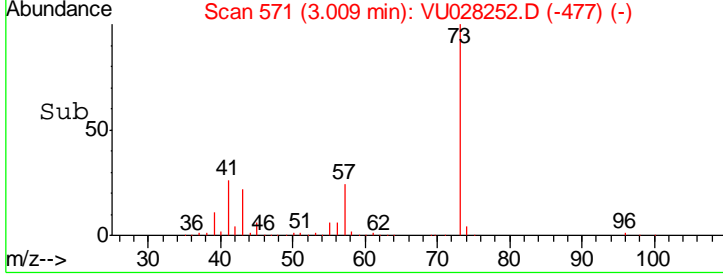
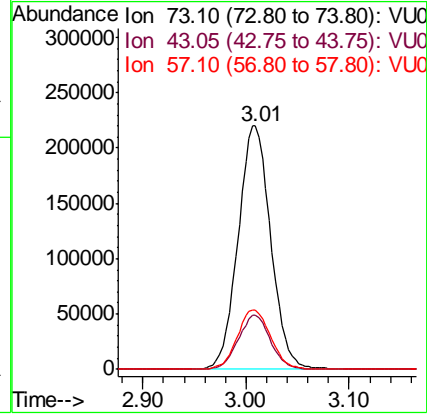
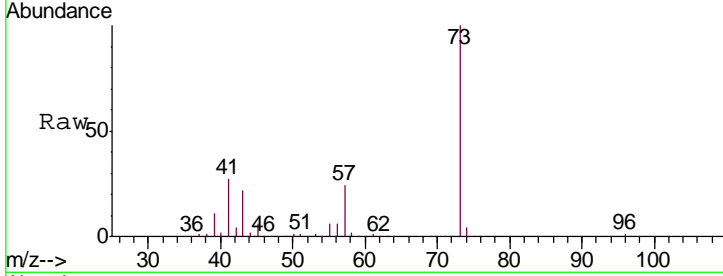




#17
 Methyl tert-butyl Ether
 Concen: 20.666 ug/L
 RT: 3.01 min Scan# 571
 Delta R.T. 0.00 min
 Lab File: VU028252.D
 Acq: 19 Nov 2018 14:04

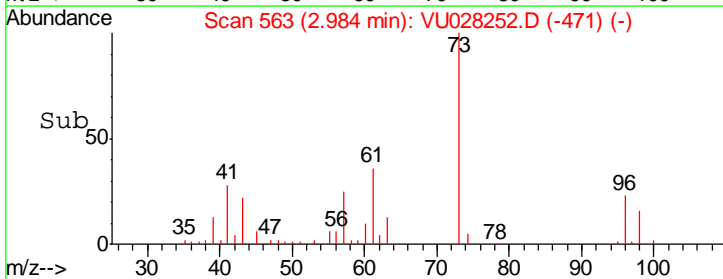
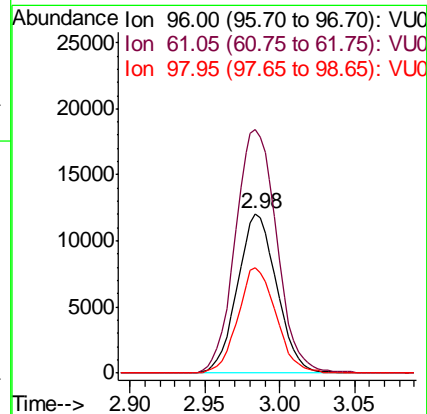
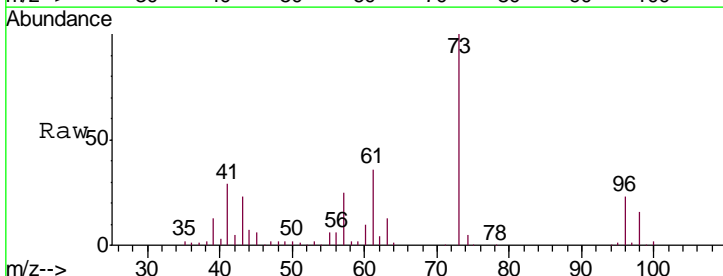
Instrument : MSVOA_U
 ClientSampled : H0FL2

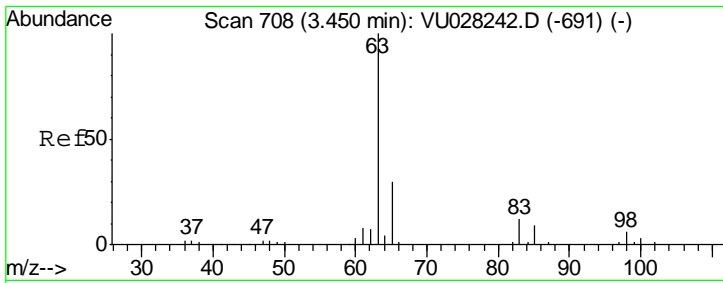
Tgt Ion	Resp	Lower	Upper
73	484657		
43	21.9	18.8	28.2
57	25.0	19.2	28.8



#18
 trans-1,2-Dichloroethene
 Concen: 2.643 ug/L
 RT: 2.98 min Scan# 563
 Delta R.T. -0.00 min
 Lab File: VU028252.D
 Acq: 19 Nov 2018 14:04

Tgt Ion	Resp	Lower	Upper
96	21982		
61	152.8	122.2	227.0
98	66.2	44.9	83.5

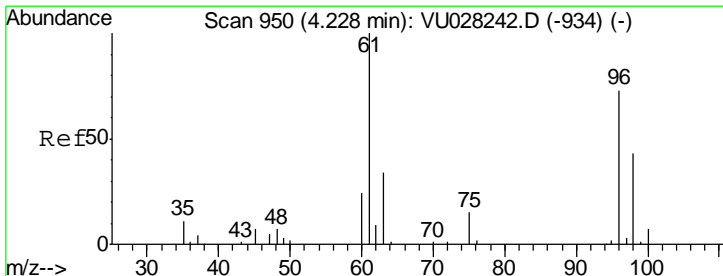
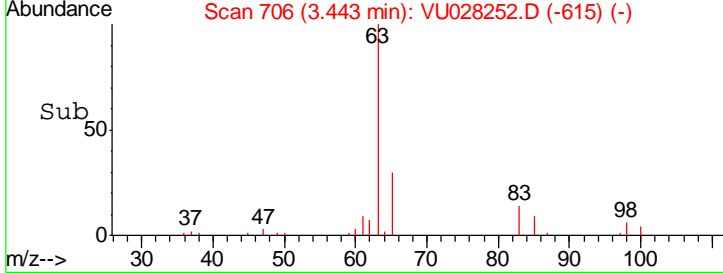
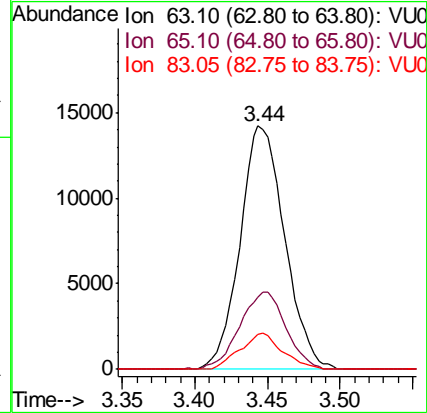
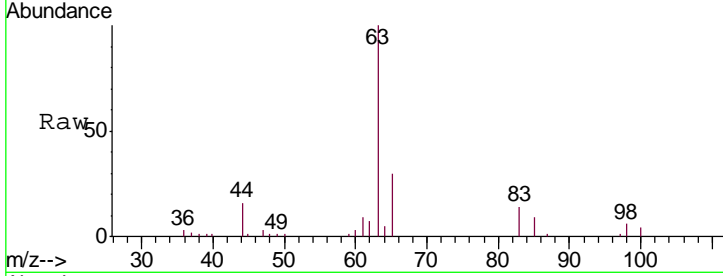




#19
 1,1-Dichloroethane
 Concen: 1.577 ug/L
 RT: 3.44 min Scan# 706
 Delta R.T. -0.01 min
 Lab File: VU028252.D
 Acq: 19 Nov 2018 14:04

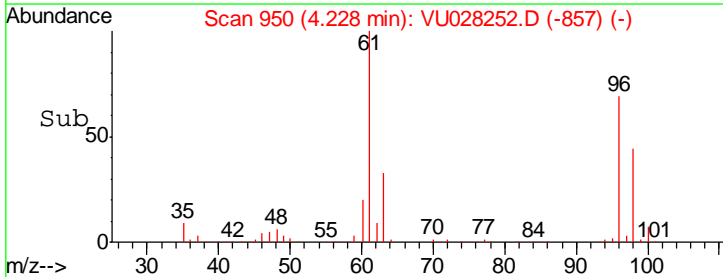
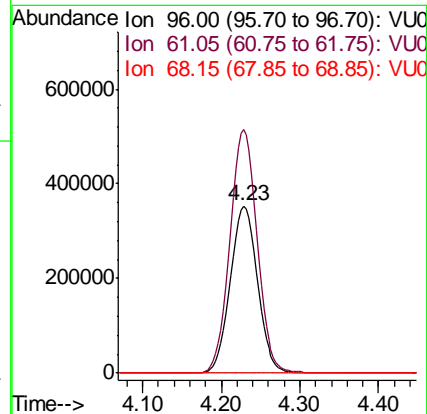
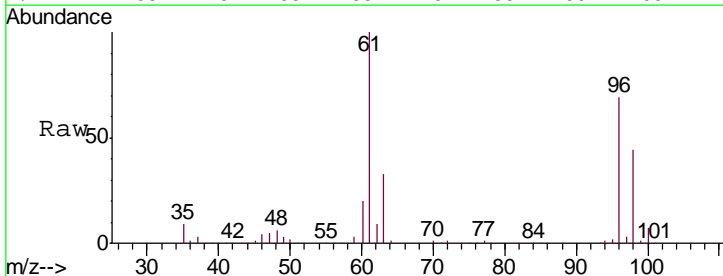
Instrument :
 MSVOA_U
 ClientSampled :
 H0FL2

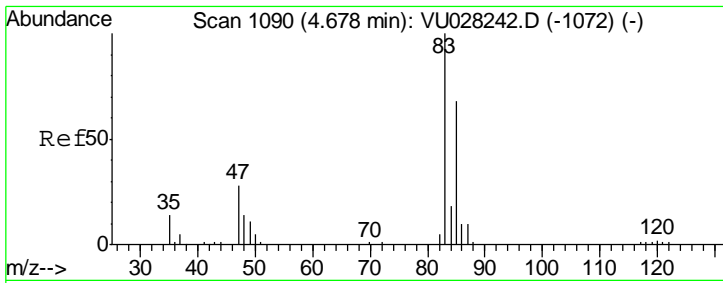
Tgt Ion	Resp	Lower	Upper
63	30413		
65	29.8	21.2	39.4
83	14.3	8.8	16.4



#22
 cis-1,2-Dichloroethene
 Concen: 86.339 ug/L
 RT: 4.23 min Scan# 950
 Delta R.T. 0.00 min
 Lab File: VU028252.D
 Acq: 19 Nov 2018 14:04

Tgt Ion	Resp	Lower	Upper
96	848680		
61	145.4	108.0	200.6
68	0.0	0.0	0.0

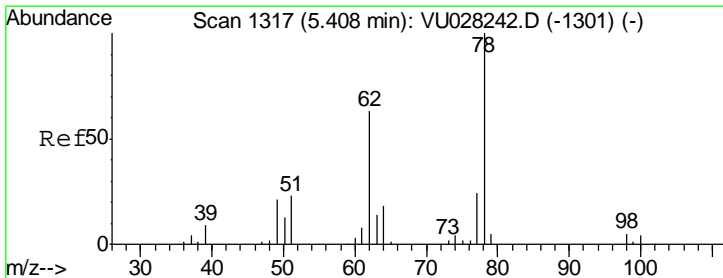
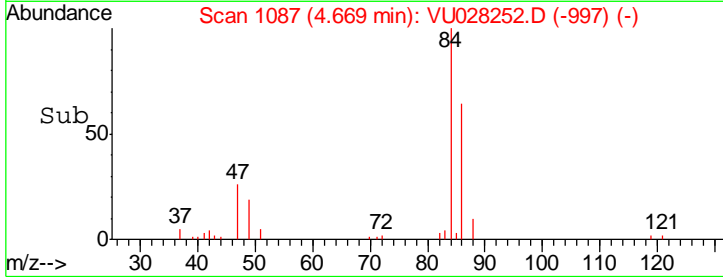
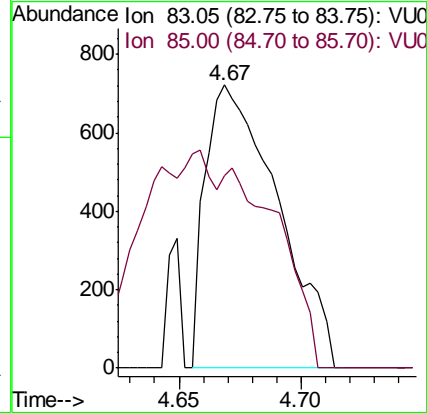
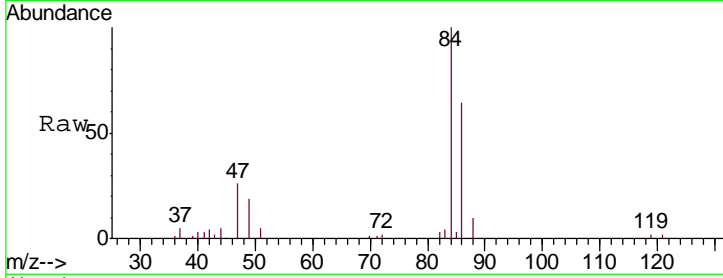




#25
 Chloroform
 Concen: 0.071 ug/L
 RT: 4.67 min Scan# 1087
 Delta R.T. -0.01 min
 Lab File: VU028252.D
 Acq: 19 Nov 2018 14:04

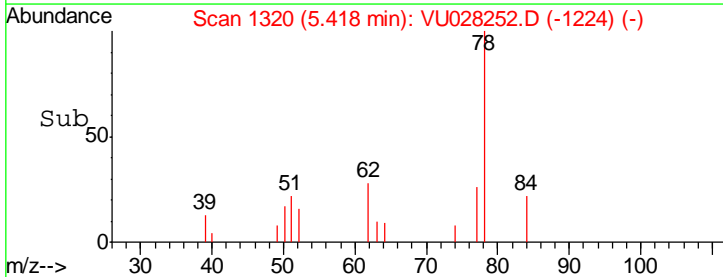
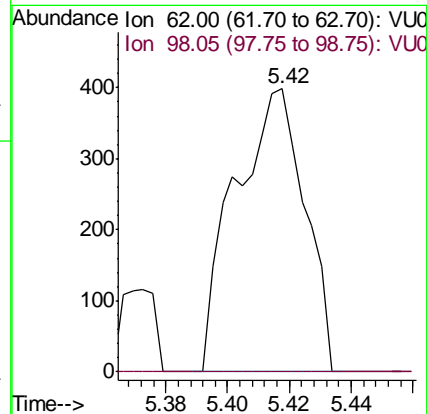
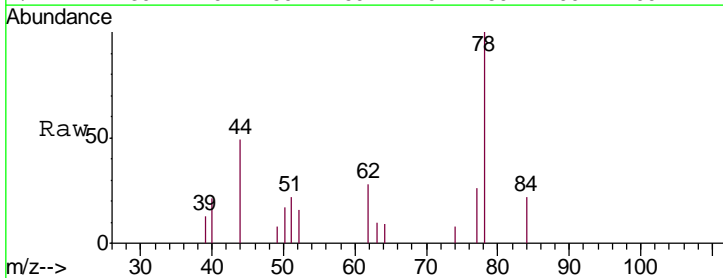
Instrument : MSVOA_U
 ClientSampled : H0FL2

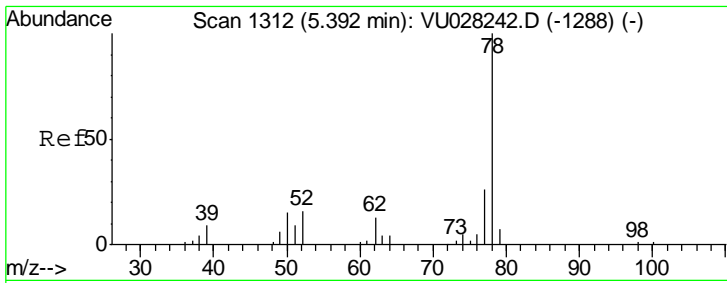
Tgt Ion: 83 Resp: 1484
 Ion Ratio Lower Upper
 83 100
 85 67.9 44.6 82.8



#27
 1,2-Dichloroethane
 Concen: 0.052 ug/L
 RT: 5.42 min Scan# 1320
 Delta R.T. 0.01 min
 Lab File: VU028252.D
 Acq: 19 Nov 2018 14:04

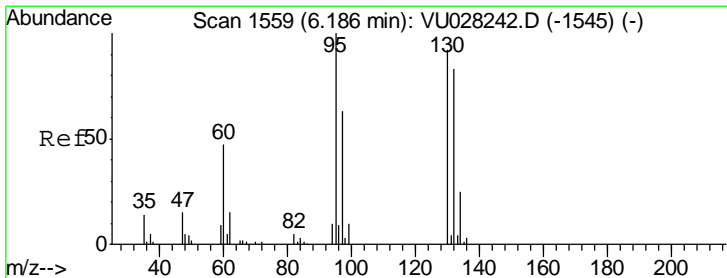
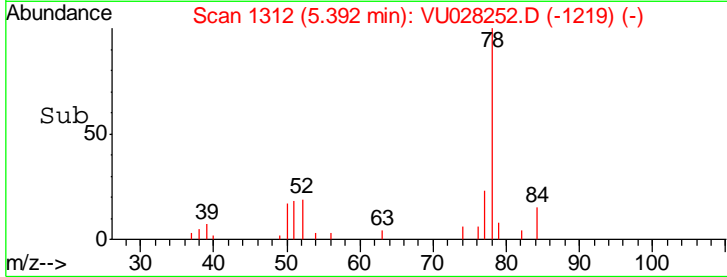
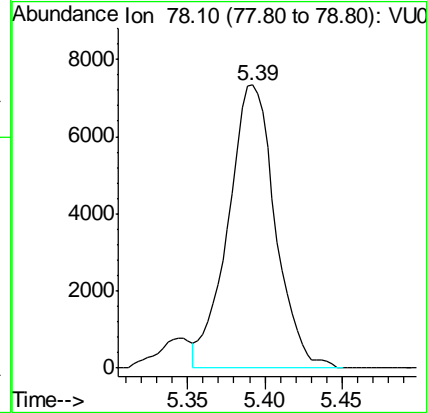
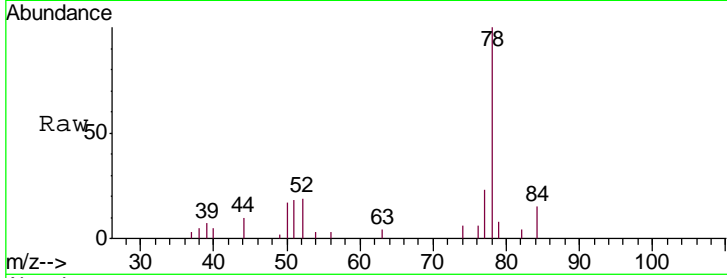
Tgt Ion: 62 Resp: 625
 Ion Ratio Lower Upper
 62 100
 98 0.0 6.2 9.4#





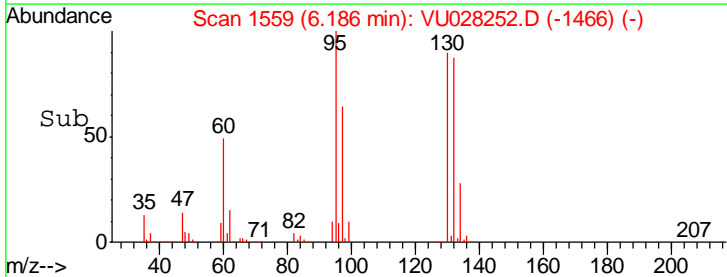
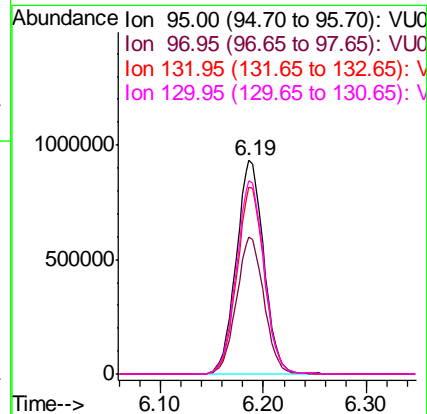
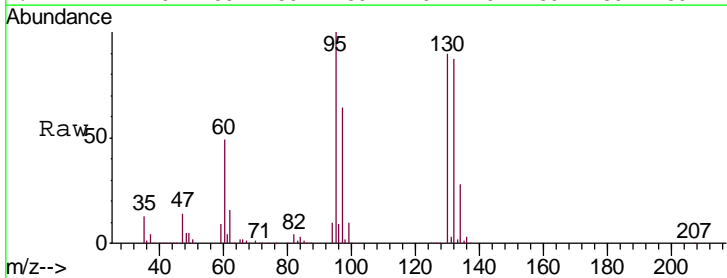
#33
 Benzene
 Concen: 0.386 ug/L
 RT: 5.39 min Scan# 1312
 Delta R.T. 0.00 min
 Lab File: VU028252.D
 Acq: 19 Nov 2018 14:04
 Tgt Ion: 78 Resp: 15507

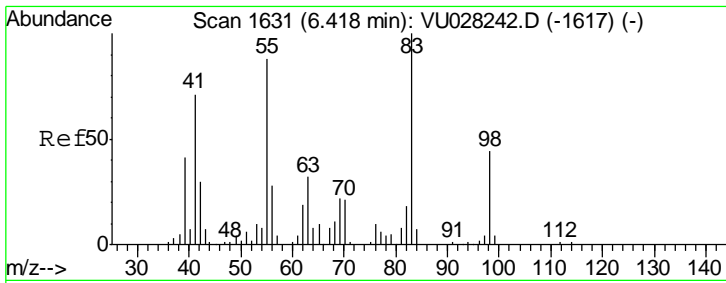
Instrument : MSVOA_U
 ClientSampled : H0FL2



#34
 Trichloroethene
 Concen: 176.412 ug/L
 RT: 6.19 min Scan# 1559
 Delta R.T. 0.00 min
 Lab File: VU028252.D
 Acq: 19 Nov 2018 14:04
 Tgt Ion: 95 Resp: 1735730

Ion	Ratio	Lower	Upper
95	100		
97	63.9	46.5	86.3
132	87.3	58.9	109.3
130	90.3	61.3	113.9

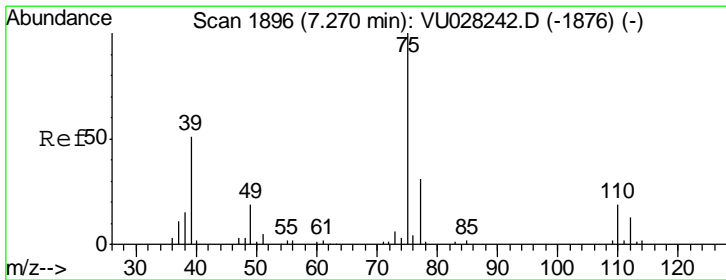
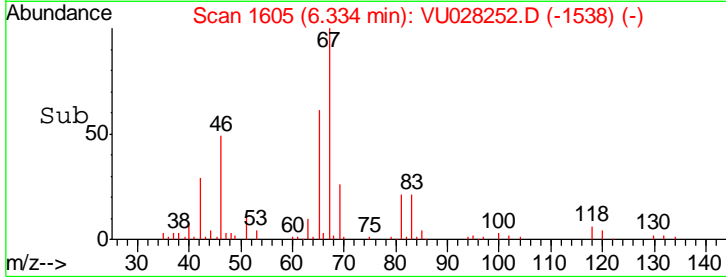
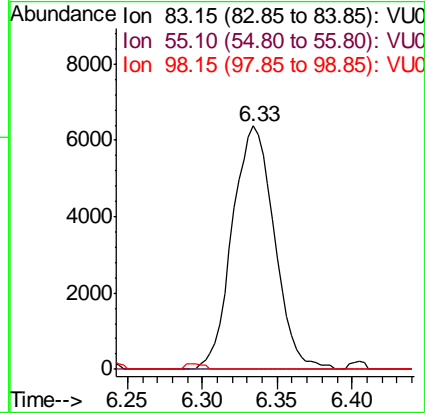
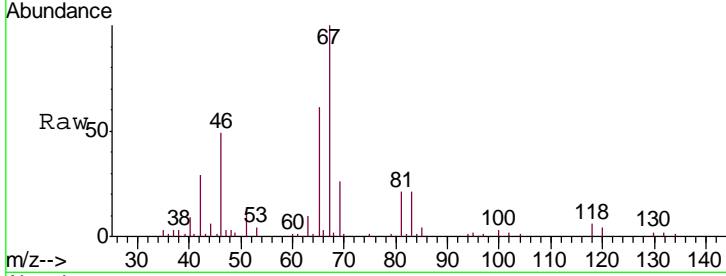




#35
 Methylcyclohexane
 Concen: 0.803 ug/L
 RT: 6.33 min Scan# 1605
 Delta R.T. -0.08 min
 Lab File: VU028252.D
 Acq: 19 Nov 2018 14:04

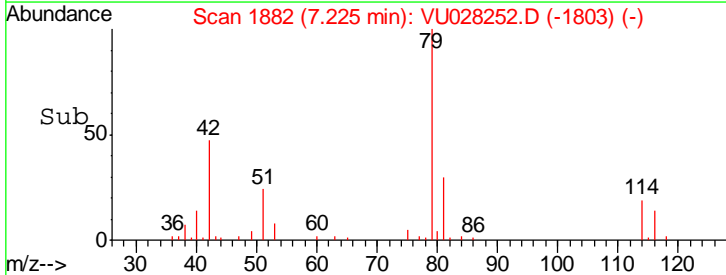
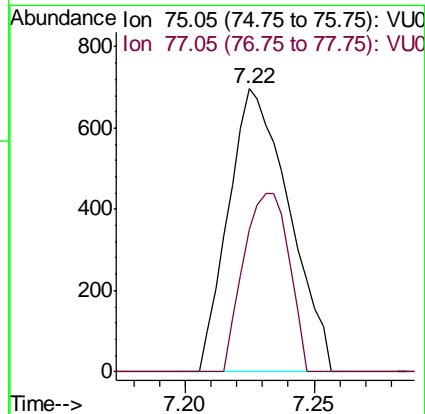
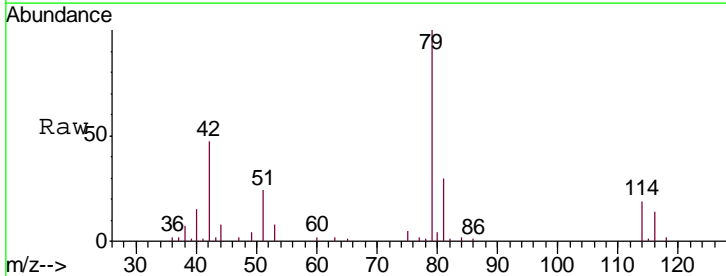
Instrument : MSVOA_U
 ClientSampled : H0FL2

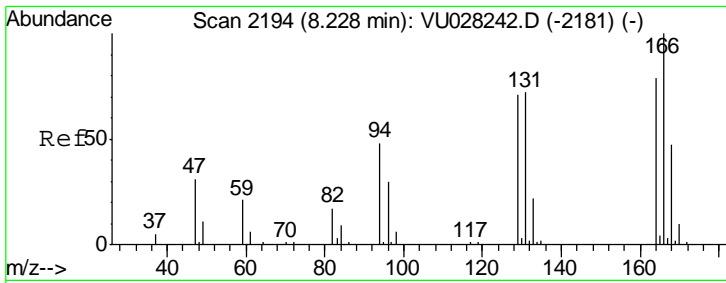
Tgt Ion	Resp	Lower	Upper
83	12449		
55	0.0	73.2	109.8#
98	0.0	33.4	50.2#



#39
 cis-1,3-Dichloropropene
 Concen: 0.079 ug/L
 RT: 7.22 min Scan# 1882
 Delta R.T. -0.04 min
 Lab File: VU028252.D
 Acq: 19 Nov 2018 14:04

Tgt Ion	Resp	Lower	Upper
75	1143		
77	50.2	21.7	40.3#

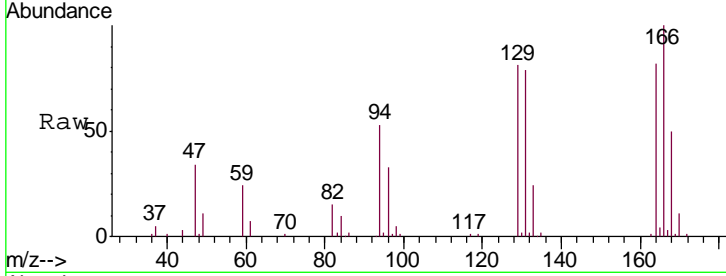




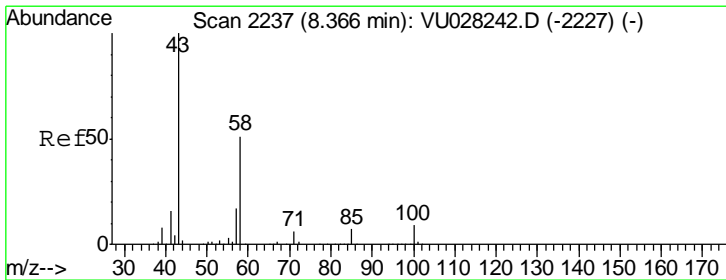
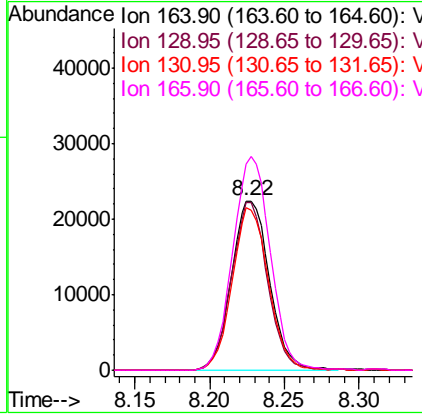
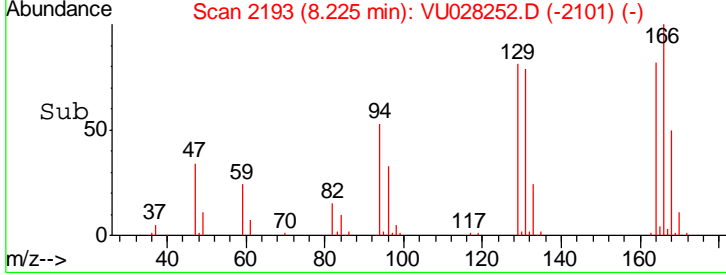
#47

Tetrachloroethene
 Concen: 5.800 ug/L
 RT: 8.22 min Scan# 2193
 Delta R.T. -0.00 min
 Lab File: VU028252.D
 Acq: 19 Nov 2018 14:04

Instrument :
 MSVOA_U
 ClientSampled :
 H0FL2

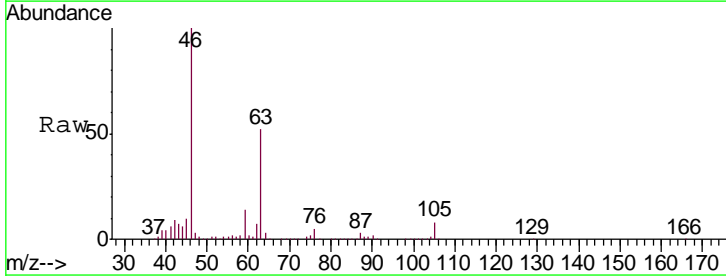


Tgt Ion	Resp	Lower	Upper
164	100		
129	99.0	67.6	125.6
131	96.0	66.3	123.1
166	122.1	89.2	165.6

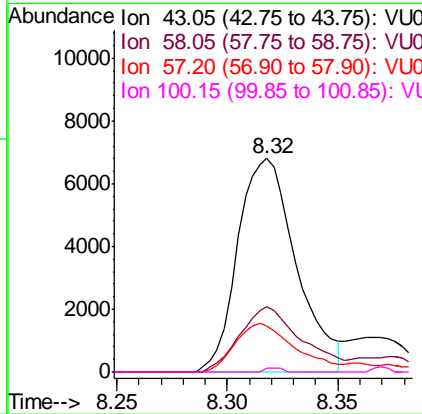
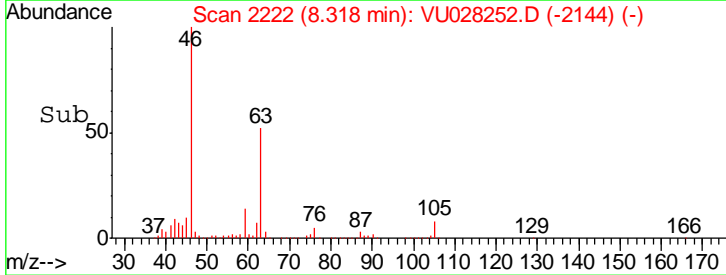


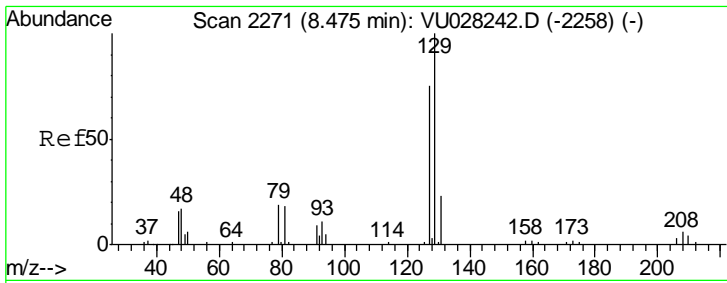
#48

2-Hexanone
 Concen: 2.144 ug/L
 RT: 8.32 min Scan# 2222
 Delta R.T. -0.05 min
 Lab File: VU028252.D
 Acq: 19 Nov 2018 14:04



Tgt Ion	Resp	Lower	Upper
43	100		
58	32.3	41.1	61.7#
57	23.0	13.8	20.8#
100	0.6	6.5	9.7#

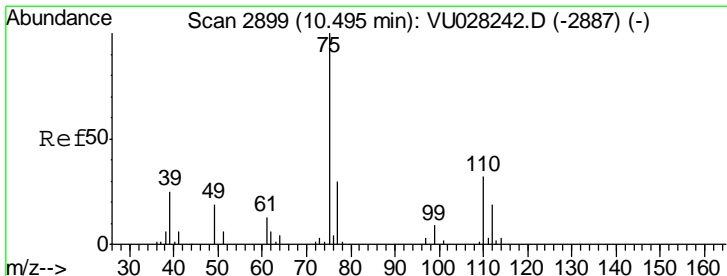
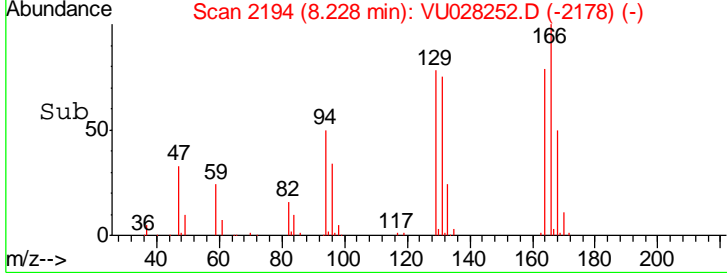
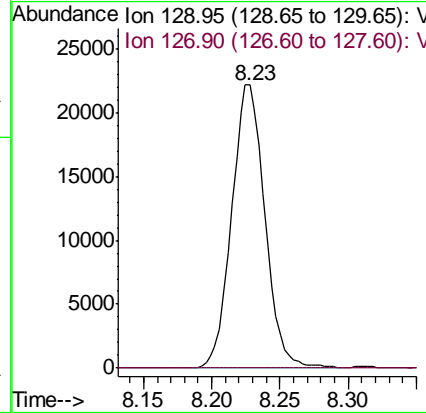
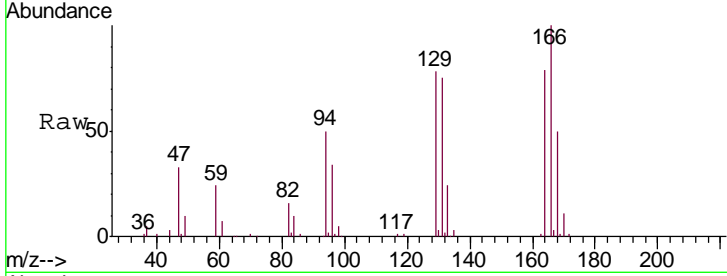




#49
 Dibromochloromethane
 Concen: 5.331 ug/L
 RT: 8.23 min Scan# 2194
 Delta R.T. -0.25 min
 Lab File: VU028252.D
 Acq: 19 Nov 2018 14:04

Instrument :
 MSVOA_U
 ClientSampled :
 H0FL2

Tgt Ion: 129 Resp: 37389
 Ion Ratio Lower Upper
 129 100
 127 0.0 54.7 101.5#



#59
 1,2,3-Trichloropropane
 Concen: 1.161 ug/L
 RT: 11.48 min Scan# 3207
 Delta R.T. 0.99 min
 Lab File: VU028252.D
 Acq: 19 Nov 2018 14:04

Tgt Ion: 75 Resp: 7695
 Ion Ratio Lower Upper
 75 100
 77 33.7 25.7 38.5

