

Data Path : Z:\VOASRV\HPCHEM1\MSVOA U\DATA\VU111918\
 Data File : VU028257.D
 Acq On : 19 Nov 2018 16:27
 Operator : MD/SY
 Sample : J5986-01 10X
 Misc : 25.0mL/MSVOA U/WATER
 ALS Vial : 18 Sample Multiplier: 1

Instrument :
 MSVOA_U
 ClientSampleId :
 H0FG7

Integration Parameters: rteint.p
 Integrator: RTE
 Smoothing : ON
 Sampling : 1
 Start Thrs: 0.1
 Stop Thrs : 0

Filtering: 5
 Min Area: 3 % of largest Peak
 Max Peaks: 100
 Peak Location: TOP

If leading or trailing edge < 100 prefer < Baseline drop else tangent >
 Peak separation: 5

Method : Z:\VOASRV\HPCHEM1\MSVOA_U\METHOD\SOMUTR111718WMA.M
 Title : TRACE VOA SOM01.0

Signal : TIC

peak #	R.T. min	first scan	max scan	last scan	PK TY	peak height	corr. area	corr. % max.	% of total
1	1.305	37	41	49	rVB2	8042	7190	1.19%	0.140%
2	1.402	64	71	80	rBV3	99202	106745	17.60%	2.072%
3	1.681	149	158	175	rVB	61721	81388	13.42%	1.580%
4	2.276	330	343	357	rBV	112815	176630	29.12%	3.429%
5	3.006	553	570	588	rVB3	42924	108048	17.82%	2.097%
6	4.225	925	949	975	rBV2	166850	601294	99.14%	11.673%
7	4.656	1064	1083	1104	rBV	88164	215310	35.50%	4.180%
8	5.340	1273	1296	1317	rBV2	181662	501037	82.61%	9.726%
9	5.890	1450	1467	1488	rBV	162099	321724	53.05%	6.245%
10	6.186	1546	1559	1587	rBV	212545	415857	68.57%	8.073%
11	6.334	1591	1605	1624	rVV	121932	246510	40.65%	4.785%
12	7.228	1872	1883	1903	rBV2	55603	101454	16.73%	1.969%
13	7.565	1976	1988	2007	rBV	217766	386827	63.78%	7.509%
14	7.852	2064	2077	2094	rBV2	32596	56892	9.38%	1.104%
15	8.231	2186	2195	2209	rVB7	4506	7950	1.31%	0.154%
16	8.315	2209	2221	2261	rBV	329051	606490	100.00%	11.773%
17	9.089	2450	2462	2496	rBV	239898	395801	65.26%	7.683%
18	10.433	2869	2880	2902	rVB	84863	139876	23.06%	2.715%
19	11.485	3193	3207	3237	rBV	217078	351765	58.00%	6.829%
20	11.861	3312	3324	3342	rBV	198708	322542	53.18%	6.261%

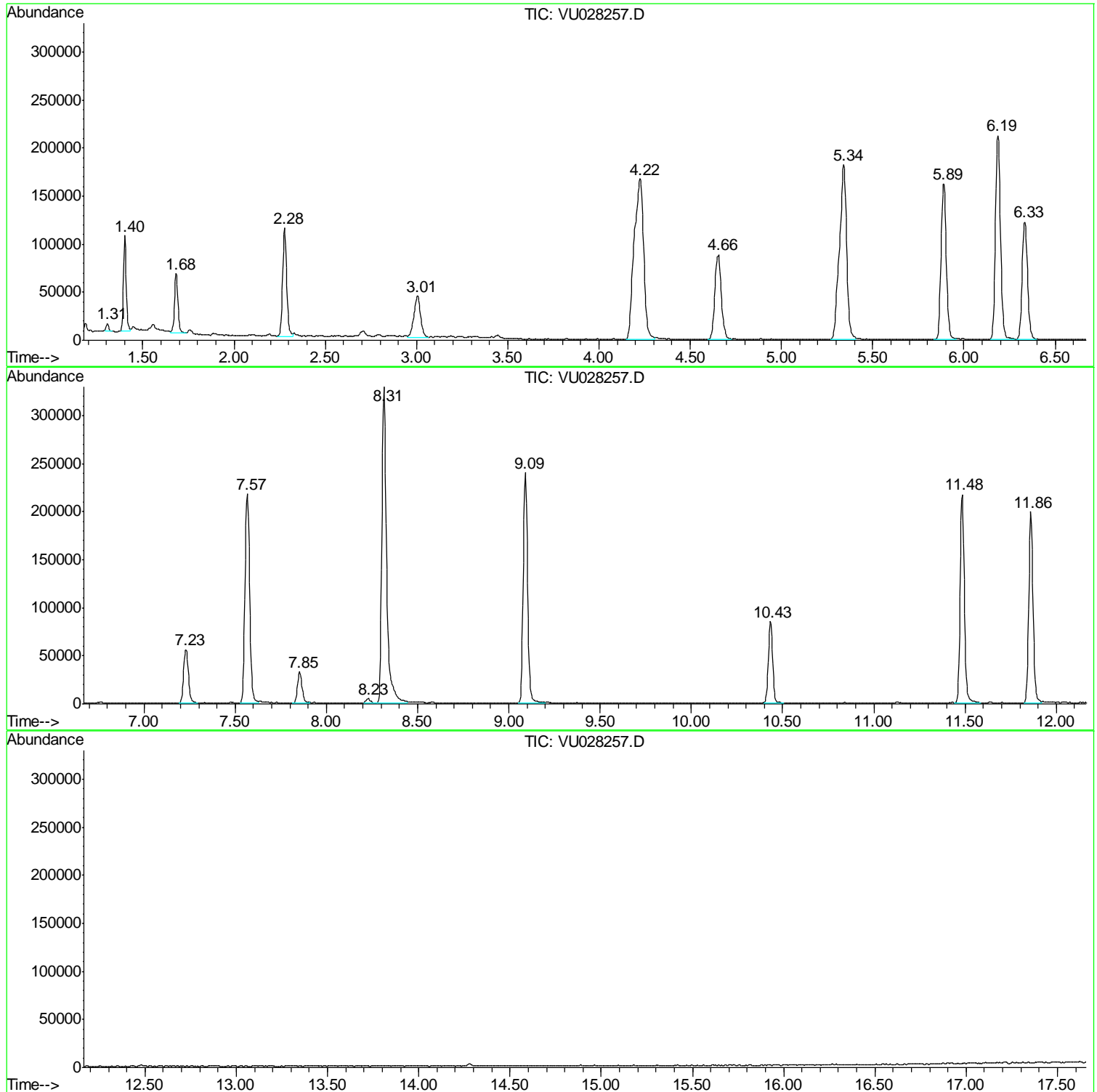
Sum of corrected areas: 5151330

Data Path : Z:\VOASRV\HPCHEM1\MSVOA U\DATA\VU111918\
Data File : VU028257.D
Acq On : 19 Nov 2018 16:27
Operator : MD/SY
Sample : J5986-01 10X
Misc : 25.0mL/MSVOA U/WATER
ALS Vial : 18 Sample Multiplier: 1

Instrument :
MSVOA_U
ClientSampled :
H0FG7

Quant Method : Z:\VOASRV\HPCHEM1\MSVOA_U\METHOD\SOMUTR111718WMA.M
Quant Title : TRACE VOA SOM01.0

TIC Library : C:\DATABASE\NIST11.L
TIC Integration Parameters: LSCINT.P



Data Path : Z:\VOASRV\HPCHEM1\MSVOA_U\DATA\VU111918\
Data File : VU028257.D
Acq On : 19 Nov 2018 16:27
Operator : MD/SY
Sample : J5986-01 10X
Misc : 25.0mL/MSVOA_U/WATER
ALS Vial : 18 Sample Multiplier: 1

Instrument :
MSVOA_U
ClientSampleId :
H0FG7

Quant Method : Z:\VOASRV\HPCHEM1\MSVOA_U\METHOD\SOMUTR111718WMA.M
Quant Title : TRACE VOA SOM01.0

TIC Library : C:\DATABASE\NIST11.L
TIC Integration Parameters: LSCINT.P

No Library Search Compounds Detected

Data Path : Z:\VOASRV\HPCHEM1\MSVOA_U\DATA\VU111918\
Data File : VU028257.D
Acq On : 19 Nov 2018 16:27
Operator : MD/SY
Sample : J5986-01 10X
Misc : 25.0mL/MSVOA_U/WATER
ALS Vial : 18 Sample Multiplier: 1

Instrument :
MSVOA_U
ClientSampleId :
H0FG7

Quant Method : Z:\VOASRV\HPCHEM1\MSVOA_U\METHOD\SOMUTR111718WMA.M
Quant Title : TRACE VOA SOM01.0

TIC Library : C:\DATABASE\NIST11.L
TIC Integration Parameters: LSCINT.P

TIC Top Hit name	RT	EstConc	Units	Response	--Internal Standard--			
					#	RT	Resp	Conc
